

A growing / declining industry is defined as an Industry Group's employment level increasing / decreasing for two quarters by five percent or more over the year. For example, all industries that grew / declined in employment by at least five percent from 2009Q3 to 2010Q3 and subsequently from 2009Q4 to 2010Q4 were included in the respective lists. The database used to generate this information was the Quarterly Census of Employment and Wages (QCEW) file, which has roughly a half-year time lag from the distribution of this report. Every quarter, when a new QCEW becomes available, growing / declining industry information is updated. Only Industry Group employment sizes of 100 or more are included in these lists.\*

On the growing industry report, the Average Weekly Wage (AWW) for NAICS 336, Transportation equipment manufacturing in 2010Q4 was \$822.51. The AWW is calculated by dividing the total wage for the industry group by the total number of jobs for the industry group and number of weeks in the observed quarter. This Industry Group grew 28.1% or 100 jobs over the year for 2010Q4 or 39.6% or 121 jobs over the year for 2010Q3, thus qualifying as a growing Industry for 2010Q4. The declining industry list reads the same way, only instead of positive percentages in the growth columns, we see negative growth and therefore declining industries.

\*Consequently, while employment in other industries may meet the growth criteria, this growth is taking place in industries with less employment.

**Table 2: Declining Industries Report for Fourth Quarter 2010 in NAICS**

<i>NAICS Sector (1)</i>	<i>Sector</i>	<i>Subsector</i>	<i>AWW (2)</i>	<i>Emp. 2010Q4</i>	<i>Emp. 2009Q4</i>	<i>Emp. Chg</i>	<i>Pct. Chg</i>	<i>Emp. 2010Q3</i>	<i>Emp. 2009Q3</i>	<i>Emp. Chg</i>	<i>Pct. Chg</i>	<i>Avg. Chg (3)</i>
339	Manufacturing	Miscellaneous manufacturing	\$626.22	111	200	-89	-44.3%	122	213	-91	-42.6%	-43.5%
334	Manufacturing	Computer and electronic product manufacturing	\$1,197.01	131	181	-50	-27.8%	149	193	-44	-22.6%	-25.1%
337	Manufacturing	Furniture and related product manufacturing	\$608.70	190	221	-31	-14.2%	204	254	-50	-19.7%	-17.1%
454	Retail Trade	Nonstore retailers	\$709.69	1,068	1,321	-253	-19.2%	1,034	1,203	-169	-14.1%	-16.7%
236	Construction	Construction of buildings	\$857.83	3,735	4,197	-463	-11.0%	3,924	4,635	-711	-15.3%	-13.3%
519	Information	Other information services	\$512.59	656	732	-76	-10.4%	679	755	-75	-10.0%	-10.2%
333	Manufacturing	Machinery manufacturing	\$1,369.85	514	568	-54	-9.5%	513	564	-51	-9.0%	-9.2%
115	Agriculture, forestry, fishing and hunting	Agriculture and forestry support activities	\$684.35	243	265	-23	-8.5%	330	359	-29	-8.2%	-8.3%
453	Retail Trade	Miscellaneous store retailers	\$410.32	1,642	1,740	-98	-5.6%	1,721	1,879	-158	-8.4%	-7.1%
425	Wholesale trade	Electronic markets and agents and brokers	\$1,762.80	248	269	-21	-7.7%	256	271	-14	-5.3%	-6.5%
813	Other services, except public administration	Membership associations and organizations	\$531.94	1,939	2,099	-160	-7.6%	2,137	2,250	-113	-5.0%	-6.3%
327	Manufacturing	Nonmetallic mineral product manufacturing	\$1,005.31	892	941	-49	-5.2%	932	993	-61	-6.1%	-5.7%
445	Retail Trade	Food and beverage stores	\$449.85	4,478	4,740	-262	-5.5%	4,575	4,835	-260	-5.4%	-5.5%

<i>NAICS Sector (1)</i>	<i>Subsector</i>	<i>AWW (2)</i>	<i>Emp. 2010Q4</i>	<i>Emp. 2009Q4</i>	<i>Emp. Chg</i>	<i>Pct. Chg</i>	<i>Emp. 2010Q3</i>	<i>Emp. 2009Q3</i>	<i>Emp. Chg</i>	<i>Pct. Chg</i>	<i>Avg. Chg (3)</i>
<b>Total</b>		\$666.64	15,846	17,474	-1,628	-9.3%	16,576	18,402	-1,827	-9.9%	-9.6%

1. Includes both public and privately owned firms.

2. The Average Weekly Wage (AWW) is calculated by dividing the total wage for the industry group by the total number of jobs for the industry group and the number of weeks in the observed quarter. The reader should also be aware that AWW's at the industry Group Level are susceptible to wage bias due to sample size, occupational distributions, seasonal pay and bonuses, and keying error. The AWW for all declining industries in 2010Q4 was \$666.64.

3. The percentage for Average Change is the employment-weighted average percentage change of the current and prior quarters.  $(\text{employment change current quarter} + \text{employment change prior quarter}) / (\text{employment current quarter} + \text{employment prior quarter})$

## Table 1: Growing Industries Report for Fourth Quarter 2010 in NAICS

<i>NAICS Sector (1)</i>	<i>Sector</i>	<i>Subsector</i>	<i>AWW (2)</i>	<i>Emp. 2010Q4</i>	<i>Emp. 2009Q4</i>	<i>Emp. Chg</i>	<i>Pct. Chg</i>	<i>Emp. 2010Q3</i>	<i>Emp. 2009Q3</i>	<i>Emp. Chg</i>	<i>Pct. Chg</i>	<i>Avg. Chg (3)</i>
336	Manufacturing	Transportation equipment manufacturing	\$822.51	454	355	100	28.1%	428	306	121	39.6%	33.4%
922	Public administration	Justice, public order, and safety activities	\$1,009.85	2,493	2,212	280	12.7%	2,472	2,079	393	18.9%	15.7%
551	Management of companies and enterprises	Management of companies and enterprises	\$1,821.83	849	773	76	9.8%	866	724	142	19.6%	14.6%
213	Mining	Support activities for mining	\$1,479.03	12,212	10,591	1,621	15.3%	11,698	10,562	1,136	10.8%	13.0%
562	Administrative and waste services	Waste management and remediation services	\$876.27	973	845	128	15.1%	958	866	92	10.6%	12.8%
<b>Total</b>			<b>\$1,375.21</b>	<b>16,981</b>	<b>14,776</b>	<b>2,205</b>	<b>14.9%</b>	<b>16,422</b>	<b>14,538</b>	<b>1,884</b>	<b>13.0%</b>	<b>13.9%</b>

1. Includes both public and privately owned firms.

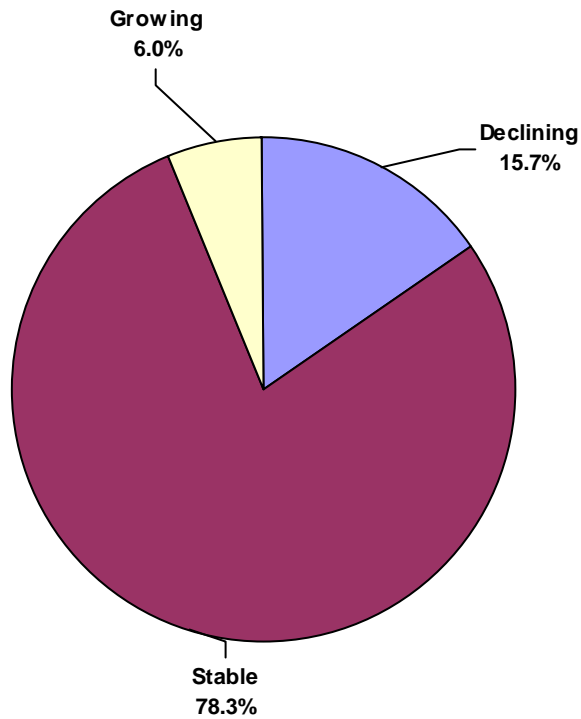
2. The Average Weekly Wage (AWW) is calculated by dividing the total wage for the industry group by the total number of jobs for the industry group and the number of weeks in the observed quarter. The reader should also be aware that AWW's at the industry Group Level are susceptible to wage bias due to sample size, occupational distributions, seasonal pay and bonuses, and keying error. The AWW for all growing industries in 2010Q4 was \$1,375.21.

3. The percentage for Average Change is the employment-weighted average percentage change of the current and prior quarters.  $(\text{employment change current quarter} + \text{employment change prior quarter}) / (\text{employment current quarter} + \text{employment prior quarter})$ .

<u>STATUS</u>	<u>INDUSTRY GROUPS</u>		<u>EMPLOYMENT</u>		<u>Average</u>
	<u>Number</u>	<u>%</u>	<u>Number</u>	<u>%</u>	<u>Wage</u>
Declining	13	15.7%	15,846	5.8%	\$666.64
Stable	65	78.3%	239,064	87.9%	\$849.61
Growing	5	6.0%	16,981	6.2%	\$1,375.21
<b><i>Total</i></b>	83	100.0%	271,891	100.0%	\$871.78

# Distribution of Sectors and Employment by Status for Fourth Quarter 2010

## Distribution of Sectors



## Distribution of Employment

