

# TRENDS

## Labor Retention: Out-Migration of Youth

by: *Sylvia D. Jones, Senior Research Analyst*

*Following a cohort of Wyoming workers through the labor market over a period of time can provide a rich description of the underlying market dynamics associated with labor allocation and retention in the state. By the end of the 11-year tracking period, 56.6 percent of the youth who worked in 1993 were no longer employed in Wyoming.*

According to U.S. Census Bureau (2002) estimates, the number of individuals age 18 to 24 has stayed, and is expected to stay, relatively constant when viewed through the perspective of a single point in time measure. Large growth is not expected as the cohort moves into the next age bracket either. This consistency could mean either the same group of people is staying and working in Wyoming or the individuals are being replaced as quickly as they leave. As a point-in-time measure, Census Bureau estimates cannot answer the questions about migration and replacement. However, following a cohort of Wyoming workers through the labor market over a period of time by matching Wyoming Wage Records to demographic information can provide a rich description of the underlying market dynamics associated with labor allocation and retention in the state.

### Cohort Analysis

Cohort analysis tracks the same population over time. In this article, we tracked all individuals with earnings in Unemployment Insurance (UI) covered industries in 1993 through 2003. Persons may not have had earnings because they were unemployed (but still in the market), withdrew from the labor market (e.g., for family responsibilities or school enrollment), became employed in a non-UI covered industry (e.g., production agriculture), or left the state.

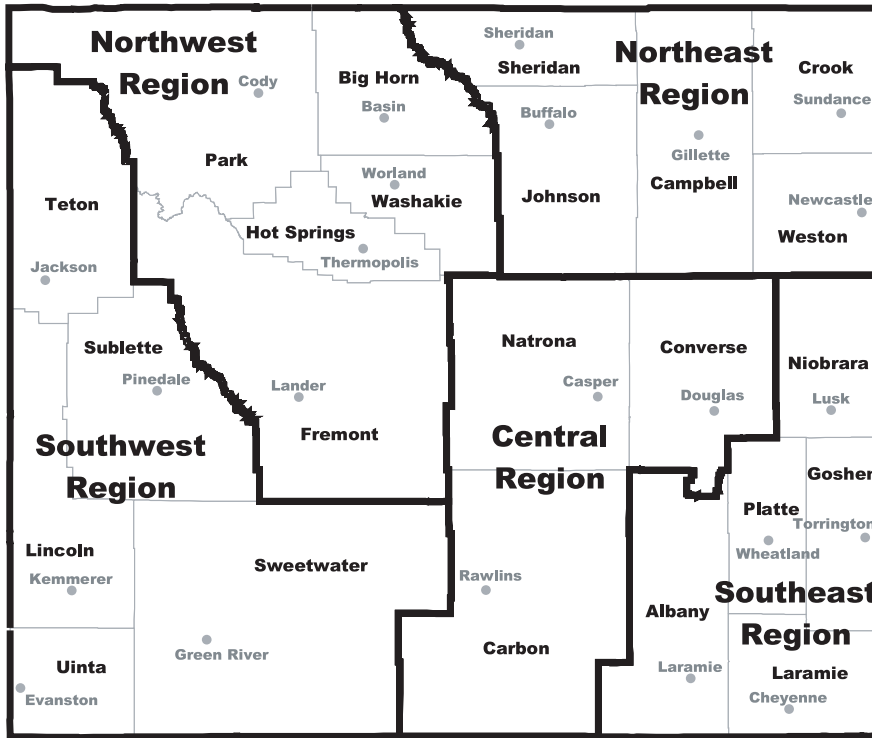
Tables 1, 2, and 3 illustrate the work experiences of a cohort of individuals who were age 18 to 24 and worked in Wyoming at some point during 1993. There were a total of 44,873

(Text continued on page 3)

## HIGHLIGHTS

- **Case characteristics and demographic data from the 2003 Survey of Occupational Injuries and Illnesses are now available....page 7**
- **Wyoming's seasonally adjusted unemployment rate (3.5%) remained well below that of the U.S. (5.2%)....page 9**
- **The Baker Hughes North American rotary rig count for Wyoming showed an over-the-year increase of 23.0 percent....page 12**

Wyoming Regions, Counties, and County Seats



Wyoming Labor Force Trends

A monthly publication of the Wyoming Department of Employment, Cynthia A. Pomeroy, Director

Research & Planning  
P.O. Box 2760  
Casper, WY 82602-2760

Tom Gallagher, Manager  
e-mail: tgalla@state.wy.us  
307-473-3801

Dr. Mark Harris, Workforce Information Supervisor  
e-mail: mharris@state.wy.us  
307-473-3826

Krista R. Shinkle, Editor  
e-mail: kshink@state.wy.us  
307-473-3808

Susan J. Murray, Associate Editor

e-mail: smurra1@state.wy.us  
307-473-3835

Editorial Committee: David Bullard, Valerie A. Davis, Dr. Mark A. Harris, Susan J. Murray, and Krista R. Shinkle.

Contributors to Wyoming Labor Force Trends this month: David Bullard, Valerie A. Davis, Margaret Hiatt, Sylvia D. Jones, Douglas W. Leonard, and Brad Payne.

Subscriptions, additional copies, and back issues available free of charge.

© Copyright 2005 by the Wyoming Department of Employment, Research & Planning.

Material contained in this publication is in the public domain and may be reproduced without special permission provided that source credit is given to: Wyoming Labor Force Trends, Wyoming Department of Employment, Research & Planning.

Department of Employment Nondiscrimination Statement

The Department of Employment does not discriminate on the basis of race, color, religion, national origin, sex, age, or disability. It is our intention that all individuals seeking services from our agency be given equal opportunity and that eligibility decisions be based upon applicable statutes, rules, and regulations.

ISSN 0512-4409

IN THIS ISSUE:

Labor Retention: Out-Migration of Youth	1
The Case Characteristics and Demographic Data From the 2003 Survey of Occupational Injuries and Illnesses	7
Wyoming Unemployment Increases Slightly in April	8
State Unemployment Rates	9
Nonagricultural Wage and Salary Employment	10
Economic Indicators	12
County Unemployment Rates	13
Unemployment Insurance Statistics	14

people who met this criteria and were included in the analysis. Of the total, 21,920 were women and 22,953 were men.

Table 1 focuses on women only. In 1993, the largest proportions worked in Accommodation & Food Services (32.6%), Retail Trade (22.9%),

and Health Care & Social Assistance (10.6%). In 1995 members of the group were age 20 to 26 and 34.3 percent of the original cohort of women were no longer working in the Wyoming workforce (see Figure 1). Accommodation &

(Text continued on page 5)

**Table 1: Women Age 18-24 in 1993 Tracked in Wyoming's Labor Market Until 2003 by Industry**

Industry	1993 (18-24)		1995 (20-26)		1997 (22-28)		1999 (24-30)		2001 (26-32)		2003 (28-34)	
	n	%	n	%	n	%	n	%	n	%	n	%
No Wages	0	0.0	7,524	34.3	10,201	46.5	11,656	53.2	12,553	57.3	13,112	59.8
Agriculture	93	0.4	57	0.3	57	0.3	36	0.2	40	0.2	32	0.1
Mining	214	1.0	184	0.8	171	0.8	128	0.6	167	0.8	176	0.8
Utilities	21	0.1	17	0.1	11	0.1	9	0.0	16	0.1	19	0.1
Construction	270	1.2	235	1.1	218	1.0	242	1.1	233	1.1	200	0.9
Manufacturing	494	2.3	382	1.7	291	1.3	249	1.1	208	0.9	179	0.8
Wholesale Trade	218	1.0	181	0.8	181	0.8	171	0.8	159	0.7	139	0.6
Retail Trade	5,009	22.9	3,110	14.2	2,189	10.0	1,711	7.8	1,431	6.5	1,214	5.5
Transportation & Warehousing	126	0.6	116	0.5	110	0.5	130	0.6	131	0.6	126	0.6
Information	379	1.7	236	1.1	224	1.0	241	1.1	218	1.0	197	0.9
Finance & Insurance	584	2.7	498	2.3	502	2.3	510	2.3	475	2.2	467	2.1
Real Estate & Rental & Leasing	385	1.8	225	1.0	194	0.9	157	0.7	152	0.7	149	0.7
Professional & Technical Services	491	2.2	405	1.8	383	1.7	359	1.6	377	1.7	350	1.6
Mgmt. of Companies & Enterprises	3	0.0	3	0.0	3	0.0	5	0.0	12	0.1	4	0.0
Administrative & Support Services	934	4.3	627	2.9	569	2.6	515	2.3	435	2.0	374	1.7
Educational Services	1,101	5.0	898	4.1	1,087	5.0	1,168	5.3	1,219	5.6	1,219	5.6
Health Care & Social Assistance	2,318	10.6	2,137	9.7	1,896	8.6	1,867	8.5	1,762	8.0	1,799	8.2
Arts, Entertainment, & Recreation	348	1.6	212	1.0	125	0.6	99	0.5	84	0.4	82	0.4
Accommodation & Food Services	7,141	32.6	3,528	16.1	2,348	10.7	1,587	7.2	1,188	5.4	1,011	4.6
Other Services	664	3.0	513	2.3	435	2.0	367	1.7	318	1.5	304	1.4
Public Administration	1,038	4.7	803	3.7	688	3.1	699	3.2	720	3.3	741	3.4
Unclassified	89	0.4	29	0.1	37	0.2	14	0.1	22	0.1	26	0.1
<b>Total</b>	<b>21,920</b>	<b>100.0</b>	<b>21,920</b>	<b>100.0</b>	<b>21,920</b>	<b>100.0</b>	<b>21,920</b>	<b>100.0</b>	<b>21,920</b>	<b>100.0</b>	<b>21,920</b>	<b>100.0</b>

**Figure 1: Percent of Wyoming Resident Workers (Age 18-24 in 1993) Who Had No Wage Record by Gender, 1993 to 2003**

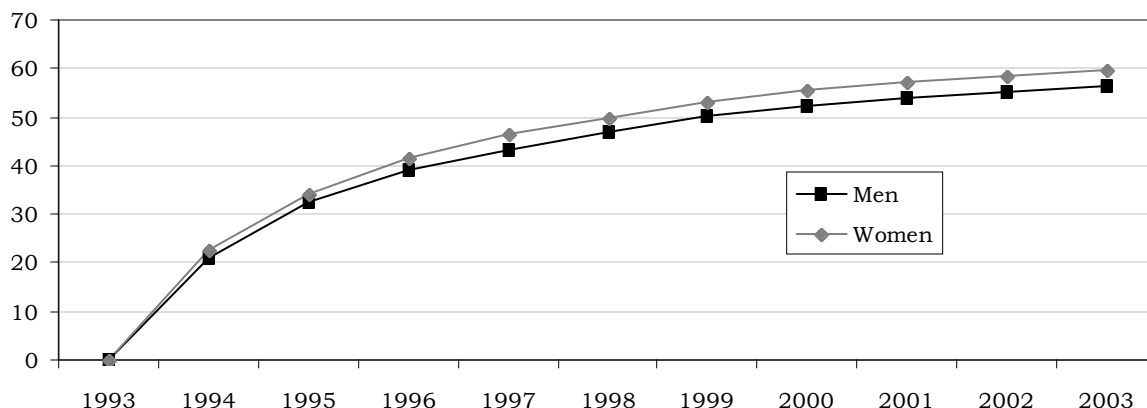


Table 2: Men Age 18-24 in 1993 Tracked in Wyoming's Labor Market Until 2003 by Industry

Industry	1993 (18-24)		1995 (20-26)		1997 (22-28)		1999 (24-30)		2001 (26-32)		2003 (28-34)	
	n	%	n	%	n	%	n	%	n	%	n	%
No Wages	0	0.0	7,040	30.7	9,292	40.5	10,870	47.4	11,641	50.7	12,279	53.5
Agriculture	501	2.2	244	1.1	193	0.8	156	0.7	134	0.6	114	0.5
Mining	1,580	6.9	1,290	5.6	1,365	5.9	1,281	5.6	1,694	7.4	1,606	7.0
Utilities	56	0.2	50	0.2	49	0.2	48	0.2	64	0.3	97	0.4
Construction	3,662	16.0	2,908	12.7	2,619	11.4	2,410	10.5	2,190	9.5	1,943	8.5
Manufacturing	1,244	5.4	1,064	4.6	962	4.2	852	3.7	711	3.1	644	2.8
Wholesale Trade	624	2.7	599	2.6	573	2.5	534	2.3	575	2.5	583	2.5
Retail Trade	3,881	16.9	2,495	10.9	1,839	8.0	1,467	6.4	1,220	5.3	1,080	4.7
Transportation & Warehousing	553	2.4	465	2.0	465	2.0	473	2.1	419	1.8	430	1.9
Information	276	1.2	236	1.0	195	0.8	241	1.0	208	0.9	186	0.8
Finance & Insurance	108	0.5	94	0.4	134	0.6	114	0.5	132	0.6	129	0.6
Real Estate & Rental & Leasing	311	1.4	217	0.9	204	0.9	158	0.7	164	0.7	155	0.7
Professional & Technical Services	365	1.6	310	1.4	292	1.3	327	1.4	335	1.5	344	1.5
Mgmt. of Companies & Enterprises	0	0.0	0	0.0	1	0.0	4	0.0	9	0.0	7	0.0
Administrative & Support Services	1,190	5.2	712	3.1	616	2.7	512	2.2	389	1.7	374	1.6
Educational Services	744	3.2	476	2.1	611	2.7	571	2.5	543	2.4	538	2.3
Health Care & Social Assistance	605	2.6	569	2.5	467	2.0	414	1.8	413	1.8	379	1.7
Arts, Entertainment, & Recreation	394	1.7	266	1.2	193	0.8	138	0.6	112	0.5	112	0.5
Accommodation & Food Services	4,431	19.3	2,268	9.9	1,477	6.4	1,063	4.6	754	3.3	645	2.8
Other Services	802	3.5	618	2.7	478	2.1	406	1.8	368	1.6	342	1.5
Public Administration	1,290	5.6	967	4.2	834	3.6	870	3.8	840	3.7	918	4.0
Unclassified	336	1.5	65	0.3	94	0.4	44	0.2	38	0.2	48	0.2
<b>Total</b>	<b>22,953</b>	<b>100.0</b>	<b>22,953</b>	<b>100.0</b>	<b>22,953</b>	<b>100.0</b>	<b>22,953</b>	<b>100.0</b>	<b>22,953</b>	<b>100.0</b>	<b>22,953</b>	<b>100.0</b>

Table 3: All Workers Age 18-24 in 1993 Tracked in Wyoming's Labor Market Until 2003 by Industry

Industry	1993 (18-24)		1995 (20-26)		1997 (22-28)		1999 (24-30)		2001 (26-32)		2003 (28-34)	
	n	%	n	%	n	%	n	%	n	%	n	%
No Wages	0	0.0	14,564	32.5	19,493	43.4	22,526	50.2	24,194	53.9	25,391	56.6
Agriculture	594	1.3	301	0.7	250	0.6	192	0.4	174	0.4	146	0.3
Mining	1,794	4.0	1,474	3.3	1,536	3.4	1,409	3.1	1,861	4.1	1,782	4.0
Utilities	77	0.2	67	0.1	60	0.1	57	0.1	80	0.2	116	0.3
Construction	3,932	8.8	3,143	7.0	2,837	6.3	2,652	5.9	2,423	5.4	2,143	4.8
Manufacturing	1,738	3.9	1,446	3.2	1,253	2.8	1,101	2.5	919	2.0	823	1.8
Wholesale Trade	842	1.9	780	1.7	754	1.7	705	1.6	734	1.6	722	1.6
Retail Trade	8,890	19.8	5,605	12.5	4,028	9.0	3,178	7.1	2,651	5.9	2,294	5.1
Transportation & Warehousing	679	1.5	581	1.3	575	1.3	603	1.3	550	1.2	556	1.2
Information	655	1.5	472	1.1	419	0.9	482	1.1	426	0.9	383	0.9
Finance & Insurance	692	1.5	592	1.3	636	1.4	624	1.4	607	1.4	596	1.3
Real Estate & Rental & Leasing	696	1.6	442	1.0	398	0.9	315	0.7	316	0.7	304	0.7
Professional & Technical Services	856	1.9	715	1.6	675	1.5	686	1.5	712	1.6	694	1.5
Mgmt. of Companies & Enterprises	3	0.0	3	0.0	4	0.0	9	0.0	21	0.0	11	0.0
Administrative & Support Services	2,124	4.7	1,339	3.0	1,185	2.6	1,027	2.3	824	1.8	748	1.7
Educational Services	1,845	4.1	1,374	3.1	1,698	3.8	1,739	3.9	1,762	3.9	1,757	3.9
Health Care & Social Assistance	2,923	6.5	2,706	6.0	2,363	5.3	2,281	5.1	2,175	4.8	2,178	4.9
Arts, Entertainment, & Recreation	742	1.7	478	1.1	318	0.7	237	0.5	196	0.4	194	0.4
Accommodation & Food Services	11,572	25.8	5,796	12.9	3,825	8.5	2,650	5.9	1,942	4.3	1,656	3.7
Other Services	1,466	3.3	1,131	2.5	913	2.0	773	1.7	686	1.5	646	1.4
Public Administration	2,328	5.2	1,770	3.9	1,522	3.4	1,569	3.5	1,560	3.5	1,659	3.7
Unclassified	425	0.9	94	0.2	131	0.3	58	0.1	60	0.1	74	0.2
<b>Total</b>	<b>44,873</b>	<b>100.0</b>	<b>44,873</b>	<b>100.0</b>	<b>44,873</b>	<b>100.0</b>	<b>44,873</b>	<b>100.0</b>	<b>44,873</b>	<b>100.0</b>	<b>44,873</b>	<b>100.0</b>

Food Services, Retail Trade, and Health Care & Social Assistance still employed the largest percentage of remaining female workers, however, those percentages dropped to 16.1, 14.2, and 9.7 percent, respectively, compared to 1993. By 2003, when the cohort reached age 18 to 34, almost 60 percent of the women working in 1993 were no longer employed in Wyoming's UI covered industries. Health Care & Social Assistance and Educational Services employed the largest number of the remaining workers (8.2% and 5.6%, respectively). In other words, nearly 60 percent of women who were 18 to 24 in 1993 no longer worked in Wyoming 11 years later. The industries which lost the most workers were also the ones which paid the least and offered the fewest benefits (see Cowan, Hauf, & Leonard, 2005).

Similar trends can be seen in the data for men (see Table 2, page 4). By the end of the tracking period, 53.5 percent of the original

cohort of men were not working in the Wyoming labor market (see Figure 1, page 3). The biggest difference in the work behavior displayed in these tables is in the distribution of industries. As previously stated, young women were concentrated in Accommodation & Food Services, Retail Trade, and Health Care & Social Assistance. Concentrations of young men, however, were found in Accommodation & Food Services (19.3%), Retail Trade (16.9%), and Construction (16.0%) in 1993. At the end of the tracking period, men were concentrated in Construction (8.5%) and Mining (7.0%), suggesting that individuals gain experience in a lower paying industry (Accommodation & Food Services) and then use those skills to move into a higher paying industry (Mining) or leave the Wyoming labor market.

Table 3 (see page 4) tracked all workers by industry over the same period. The most important observation is that by the end of the

**Table 4: Workers of Age 18-24 in Wyoming's Labor Market in 2003 by Industry and Gender**

Industry	Women		Men		Total	
	n	%	n	%	n	%
Agriculture	107	0.5	359	1.6	466	1.0
Mining	259	1.2	2,080	9.1	2,339	5.3
Utilities	27	0.1	88	0.4	115	0.3
Construction	480	2.2	4,125	18.0	4,605	10.3
Manufacturing	439	2.0	1,098	4.8	1,537	3.5
Wholesale Trade	237	1.1	745	3.3	982	2.2
Retail Trade	4,357	20.1	3,564	15.6	7,921	17.8
Transportation & Warehousing	214	1.0	548	2.4	762	1.7
Information	381	1.8	390	1.7	771	1.7
Finance & Insurance	688	3.2	135	0.6	823	1.8
Real Estate & Rental & Leasing	346	1.6	344	1.5	690	1.5
Professional & Technical Services	646	3.0	443	1.9	1,089	2.4
Management of Companies & Enterprises	3	0.0	3	0.0	6	0.0
Administrative & Support Services	1,067	4.9	1,268	5.5	2,335	5.2
Educational Services	1,591	7.3	1,069	4.7	2,660	6.0
Health Care & Social Assistance	3,143	14.5	645	2.8	3,788	8.5
Arts, Entertainment, & Recreation	273	1.3	325	1.4	598	1.3
Accommodation & Food Services	5,506	25.4	3,539	15.5	9,045	20.3
Other Services	658	3.0	771	3.4	1,429	3.2
Public Administration	1,190	5.5	1,203	5.3	2,393	5.4
Unclassified	56	0.3	130	0.6	186	0.4
<b>Total</b>	<b>21,668</b>	<b>100.0</b>	<b>22,872</b>	<b>100.0</b>	<b>44,540</b>	<b>100.0</b>

11-year tracking period, 56.6 percent of the youth who worked in 1993 were no longer employed in Wyoming.

Even though most of the 1993 young workers have left Wyoming's labor market, new workers born in the state and in-migrants have filled the 18- to 24-year-old gap. Table 4 (see page 5) shows the industry distribution of those in the age group (18 to 24) in 2003. The total for this cohort is remarkably similar to the 1993 cohort (44,540 compared to 44,873, respectively). Apparently the available labor pool has thus far remained stable. This observation is consistent with the Census Bureau's estimates and population projections.

The industry distribution of employment remained fairly stable between the two time periods as well. Women were working primarily in Accommodation & Food Services and men were working in Construction, Retail Trade,

and Accommodation & Food Services. With some notable exceptions, job opportunities for youth seem to be similar in both 1993 and 2003.

Table 5 compares the total 1993 cohort to the 2003 cohort to better evaluate any change in the industry distribution of the young workforce. Some industries employed more younger workers in 2003 than in 1993. Accommodation & Food Services and Agriculture lost the greatest percentages of workers. Accommodation & Food Services lost approximately 2,500 workers (a 21.8% decline) to other industries. (Industries with earnings higher than Accommodation & Food Services showing large numeric gains in 2003 were Mining [n=545], Construction [n=673], Health Care & Social Assistance [n=865], and Educational Services [n=815].) This decline is

(Text continued on page 8)

**Table 5: Workers of Age 18-24 in Wyoming's Labor Market in 1993 and 2003 by Industry**

Industry	1993		2003		Change	
	n	%	n	%	n	%
Agriculture	594	1.3	466	1.0	-128	-21.5
Mining	1,794	4.0	2,339	5.3	545	30.4
Utilities	77	0.2	115	0.3	38	49.4
Construction	3,932	8.8	4,605	10.3	673	17.1
Manufacturing	1,738	3.9	1,537	3.5	-201	-11.6
Wholesale Trade	842	1.9	982	2.2	140	16.6
Retail Trade	8,890	19.8	7,921	17.8	-969	-10.9
Transportation & Warehousing	679	1.5	762	1.7	83	12.2
Information	655	1.5	771	1.7	116	17.7
Finance & Insurance	692	1.5	823	1.8	131	18.9
Real Estate & Rental & Leasing	696	1.6	690	1.5	-6	-0.9
Professional & Technical Services	856	1.9	1,089	2.4	233	27.2
Management of Companies & Enterprises	3	0.0	6	0.0	3	100.0
Administrative & Support Services	2,124	4.7	2,335	5.2	211	9.9
Educational Services	1,845	4.1	2,660	6.0	815	44.2
Health Care & Social Assistance	2,923	6.5	3,788	8.5	865	29.6
Arts, Entertainment, & Recreation	742	1.7	598	1.3	-144	-19.4
Accommodation & Food Services	11,572	25.8	9,045	20.3	-2,527	-21.8
Other Services	1,466	3.3	1,429	3.2	-37	-2.5
Public Administration	2,328	5.2	2,393	5.4	65	2.8
Unclassified	425	0.9	186	0.4	-239	-56.2
<b>Total</b>	<b>44,873</b>	<b>100.0</b>	<b>44,540</b>	<b>100.0</b>	<b>-333</b>	<b>-0.7</b>

## Case Characteristics and Demographic Data From the 2003 Survey of Occupational Injuries and Illnesses

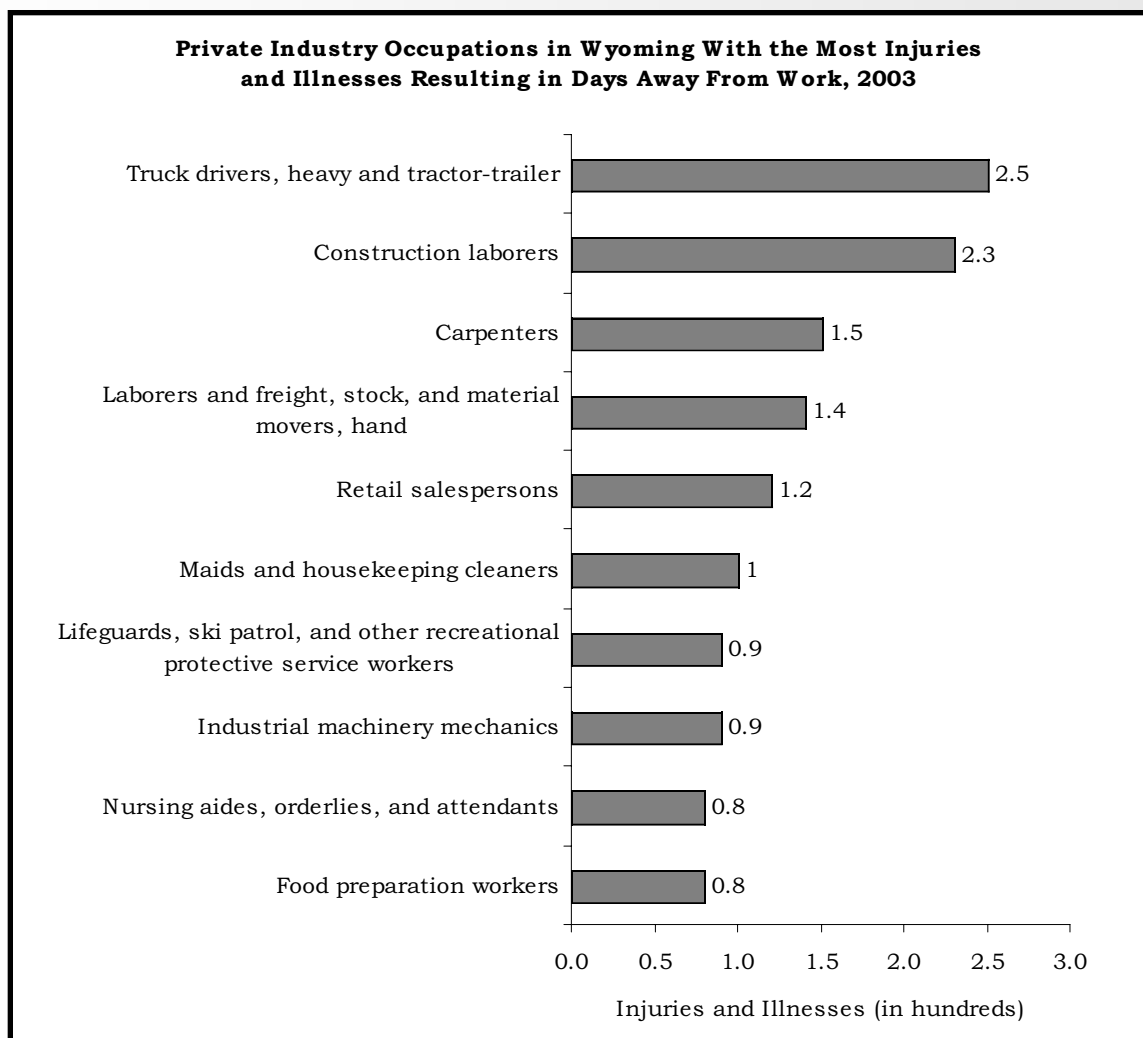
by: Valerie A. Davis, Economist

The 2003 Survey of Occupational Injuries and Illnesses provides not only the summary data (released in December of 2004) which were discussed in the February 2005 issue of *Wyoming Labor Force Trends*, but also case characteristics and demographic data (released in March of 2005), a sample of which is below.

Case characteristics include the nature of the injury or illness, part of body affected, event or exposure, and primary and secondary sources of the injury or illness.

Demographic data include occupation, age, gender, race, and length of service of the more seriously injured and ill workers. More seriously is defined as involving days away from work. The 2004 survey summary data will be released in mid-November, 2005 and case characteristics and demographic data will be released in mid-December, 2005.

The most current data are located on our website at <http://doe.state.wy.us/LMI/OSH/toc.htm>. Look for updates as new information becomes available.



(Continued from page 6)

significant in light of the fact that Accommodation & Food Services is projected to be a high growth industry (Leonard, in press). Previous research indicates that in 2002 nonresident workers comprised over one-third of the employment in the Leisure & Hospitality industry, of which Accommodation & Food Services is a component (Gallagher et al., 2005). Consequently, meeting the employment demand in Accommodation & Food Services will require even greater reliance on nonresident workers because Wyoming's youth appear to be taking advantage of work opportunities in other industries .

## References

Cowan, C., Hauf, D., & Leonard, D. W. (2005). *Wages and benefits in Wyoming: Combining the Wyoming wage survey and the employer benefits survey for an exploration of total*

*compensation*. Retrieved April 11, 2005, from <http://doe.state.wy.us/LMI/OESBenPub.pdf>

Gallagher, T., Harris, M., Hiatt, M., Leonard, D. W., Saulcy, S., & Shinkle, K. R. (2005). *Private sector employee access to health insurance and the potential Wyo-Care market*. Casper, WY: Wyoming Department of Employment, Research & Planning.

Leonard, D. W. (in press). Industries and occupations projected to grow or decline in the short term and over the next decade. *Outlook 2010 Revisited: Wyoming's Labor Market at Mid-Decade*.

U.S. Census Bureau (2002). *Detailed state projections by single year of age, sex, race, and Hispanic origin: 1995 to 2025*. Retrieved May 16, 2005, from <http://www.census.gov/population/www/projections/stproj.html>



## Wyoming Unemployment Increases Slightly in April

by: **David Bullard, Senior Economist**

Wyoming's seasonally adjusted unemployment rate increased slightly, rising from 3.1 percent in March to 3.5 percent in April. It remained well below the U.S. unemployment rate of 5.2 percent. Despite the modest rise in unemployment, Wyoming's economy continued to expand in April. An estimated 4,800 jobs (1.9%) were created compared to the previous year. April is the sixth straight month that Wyoming employment has grown faster than U.S. employment (1.7%).

From March to April, employment grew by 3,500 jobs (1.4%). Normal seasonal increases were seen in Construction (1,500 jobs or 8.7%), Retail Trade (300 jobs or 1.0%), Professional & Business Services (700 jobs or 4.7%), and Leisure & Hospitality (500 jobs or 1.7%).

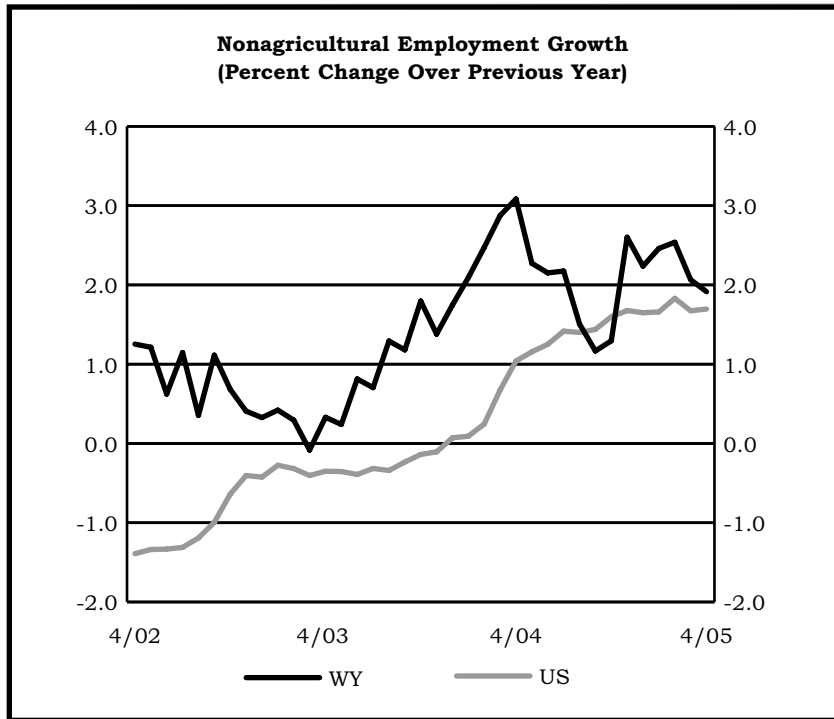
From April 2004, Wyoming gained 4,800 jobs (1.9%). Natural Resources & Mining

(including oil & gas) posted the largest job gains (2,400 jobs or 12.5%). Other notable increases were seen in Transportation & Utilities (300 jobs or 2.5%), Professional & Business Services (400 jobs or 2.6%), Education & Health Services (500 jobs or 2.3%), Leisure & Hospitality (600 jobs or 2.1%) and Government (300 jobs or 0.5%). Slight job losses occurred in Manufacturing (-100 jobs or -1.1%) and Retail Trade (-100 jobs or -0.3%).

Almost all county unemployment rates were stable or decreased from March to April. Teton County posted the highest rate (5.5%), followed by Fremont (4.8%) and Washakie (4.7%) counties. The lowest unemployment rate was found in Sublette County (2.0%), followed by Campbell (2.6%) and Albany (2.9%) counties.

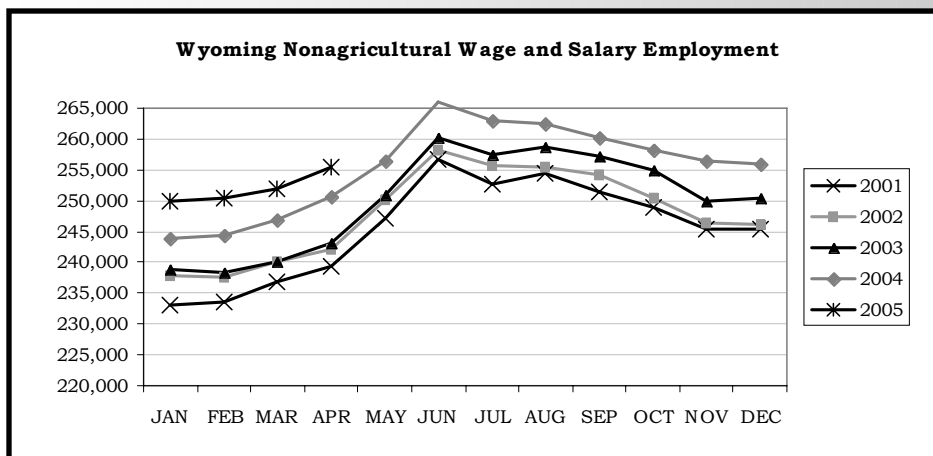
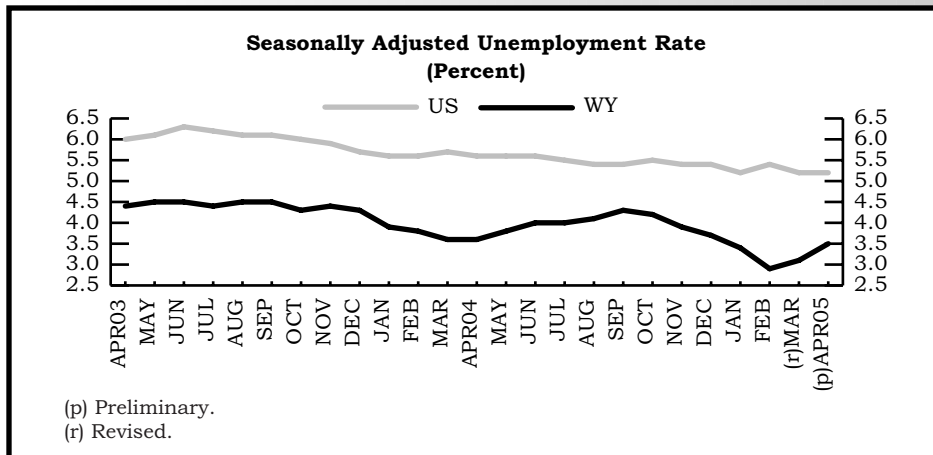






### State Unemployment Rates April 2005 (Seasonally Adjusted)

State	Unemp. Rate
Puerto Rico	11.2
District of Columbia	7.7
Michigan	7.0
Mississippi	6.8
Alaska	6.7
Oregon	6.5
South Carolina	6.5
Ohio	6.1
New Mexico	6.0
Illinois	5.9
Tennessee	5.8
Kentucky	5.6
Missouri	5.6
Texas	5.5
Washington	5.5
California	5.4
Indiana	5.4
North Carolina	5.3
Colorado	5.2
Kansas	5.2
<b>United States</b>	<b>5.2</b>
West Virginia	5.2
Louisiana	5.1
Arizona	5.0
Georgia	5.0
Arkansas	4.9
Connecticut	4.9
New York	4.9
Pennsylvania	4.9
Utah	4.9
Maine	4.7
Massachusetts	4.7
Rhode Island	4.7
Iowa	4.5
Oklahoma	4.5
Wisconsin	4.5
Alabama	4.4
Montana	4.4
Maryland	4.3
Florida	4.2
New Jersey	4.2
Idaho	4.0
Minnesota	4.0
Nevada	4.0
Delaware	3.9
Nebraska	3.9
South Dakota	3.7
Virginia	3.6
<b>Wyoming</b>	<b>3.5</b>
New Hampshire	3.4
Vermont	3.3
North Dakota	3.2
Hawaii	2.9



# Wyoming Nonagricultural Wage and Salary Employment

by: David Bullard, Senior Economist

*Normal seasonal employment increases were seen in Construction, Retail Trade, Professional & Business Services, and Leisure & Hospitality.*

WYOMING STATEWIDE	Employment in Thousands					Percent Change Total Employment		LARAMIE COUNTY	Employment in Thousands					Percent Change Total Employment	
	Mar05(r)		Apr04(b)		Mar05	Apr04	Mar05		Apr04(b)		Mar05	Apr04			
	Apr05(p)	Mar05(r)	Apr04(b)	Apr05	Apr05	Apr05(p)	Mar05(r)		Apr04(b)	Apr05	Apr05				
<b>TOTAL NONAG. WAGE &amp; SALARY EMPLOYMENT</b>	<b>255.5</b>	<b>252.0</b>	<b>250.7</b>	<b>1.4</b>	<b>1.9</b>			<b>40.9</b>	<b>40.5</b>	<b>40.6</b>	<b>1.0</b>	<b>0.7</b>			
<b>TOTAL PRIVATE</b>	<b>189.7</b>	<b>186.2</b>	<b>185.2</b>	<b>1.9</b>	<b>2.4</b>			<b>28.2</b>	<b>27.8</b>	<b>28.2</b>	<b>1.4</b>	<b>0.0</b>			
<b>GOODS PRODUCING</b>	<b>49.5</b>	<b>47.7</b>	<b>47.1</b>	<b>3.8</b>	<b>5.1</b>			<b>4.2</b>	<b>4.1</b>	<b>4.1</b>	<b>2.4</b>	<b>2.4</b>			
Natural Resources & Mining	21.6	21.4	19.2	0.9	12.5			2.6	2.5	2.5	4.0	4.0			
Mining	21.4	21.3	19.2	0.5	11.5			1.6	1.6	1.6	0.0	0.0			
Oil & Gas Extraction	3.3	3.4	3.3	-2.9	0.0										
Mining Except Oil & Gas	7.6	7.6	7.4	0.0	2.7										
Coal Mining	4.9	4.8	4.8	2.1	2.1										
Support Activities for Mining	10.5	10.3	8.5	1.9	23.5										
Support Act. for Oil & Gas	6.8	6.8	5.8	0.0	17.2										
Construction	18.8	17.3	18.7	8.7	0.5										
Construction of Buildings	4.0	3.7	3.9	8.1	2.6										
Heavy & Engineering Constr.	4.8	4.3	5.2	11.6	-7.7										
Specialty Trade Contractors	10.0	9.3	9.6	7.5	4.2										
Manufacturing	9.1	9.0	9.2	1.1	-1.1										
Durable Goods	5.0	4.9	4.8	2.0	4.2										
Non-Durable Goods	4.1	4.1	4.4	0.0	-6.8										
<b>SERVICE PROVIDING</b>	<b>206.0</b>	<b>204.3</b>	<b>203.6</b>	<b>0.8</b>	<b>1.2</b>			<b>12.7</b>	<b>12.7</b>	<b>12.4</b>	<b>0.0</b>	<b>2.4</b>			
Trade, Trans., Warehouse, & Util.	48.6	48.2	48.3	0.8	0.6			2.6	2.6	2.6	0.0	0.0			
Wholesale Trade	7.4	7.4	7.3	0.0	1.4			3.8	3.9	3.8	-2.6	0.0			
Merchant Whlsrsls., Durable	4.6	4.6	4.4	0.0	4.5			6.3	6.2	6.0	1.6	5.0			
Retail Trade	29.1	28.8	29.2	1.0	-0.3			3.2	3.2	3.3	0.0	-3.0			
Motor Vehicle & Parts Dealers	4.2	4.2	4.2	0.0	0.0										
Bldg. Material & Garden Sup.	2.4	2.3	2.5	4.3	-4.0										
Food & Beverage Stores	4.6	4.6	4.6	0.0	0.0										
Grocery Stores	3.7	3.7	3.8	0.0	-2.6										
Gasoline Stations	4.0	4.1	4.2	-2.4	-4.8										
General Merchandise Stores	5.5	5.4	5.5	1.9	0.0										
Miscellaneous Store Retailers	1.8	1.8	1.8	0.0	0.0										
Transport., Warehouse, & Util.	12.1	12.0	11.8	0.8	2.5										
Utilities	2.2	2.2	2.2	0.0	0.0										
Transportation & Warehousing	9.9	9.8	9.6	1.0	3.1										
Truck Transportation	3.5	3.5	3.3	0.0	6.1										
Information	4.3	4.3	4.2	0.0	2.4										
Financial Activities	10.4	10.3	10.3	1.0	1.0										
Finance & Insurance	6.8	6.7	6.8	1.5	0.0										
Real Estate & Rental & Leasing	3.6	3.6	3.5	0.0	2.9										
Professional & Business Services	15.6	14.9	15.2	4.7	2.6										
Prof., Scientific & Tech. Services	7.8	7.8	7.7	0.0	1.3										
Architect., Engineering & Rel.	2.1	2.1	2.1	0.0	0.0										
Mgmt. of Companies & Enterpr.	0.8	0.8	0.7	0.0	14.3										
Admin., Support & Waste Svcs.	7.0	6.3	6.8	11.1	2.9										
Educational & Health Services	21.8	21.9	21.3	-0.5	2.3										
Educational	2.1	2.1	2.1	0.0	0.0										
Health Care & Social Assistance	19.7	19.8	19.2	-0.5	2.6										
Ambulatory Health Care	7.4	7.5	7.3	-1.3	1.4										
Offices of Physicians	3.2	3.1	3.0	3.2	6.7										
Hospitals	2.8	2.8	2.7	0.0	3.7										
Nursing & Res. Care Facilities	4.4	4.4	4.2	0.0	4.8										
Social Assistance	5.1	5.1	5.0	0.0	2.0										
Leisure & Hospitality	29.7	29.2	29.1	1.7	2.1										
Arts, Entertainment, & Rec.	2.5	2.4	2.4	4.2	4.2										
Accommodation & Food Services	27.2	26.8	26.7	1.5	1.9										
Accommodation	9.4	9.5	9.2	-1.1	2.2										
Food Serv. & Drinking Places	17.8	17.3	17.5	2.9	1.7										
Other Services	9.8	9.7	9.7	1.0	1.0										
Repair & Maintenance	3.1	3.1	3.0	0.0	3.3										
<b>TOTAL GOVERNMENT</b>	<b>65.8</b>	<b>65.8</b>	<b>65.5</b>	<b>0.0</b>	<b>0.5</b>			<b>5.6</b>	<b>5.8</b>	<b>5.7</b>	<b>-3.4</b>	<b>-1.8</b>			
Federal Government	7.2	7.2	7.3	0.0	-1.4			0.7	0.7	0.7	0.0	0.0			
State Government	15.6	15.6	15.7	0.0	-0.6			0.7	0.7	0.7	0.0	0.0			
State Govt. Education	6.4	6.4	6.6	0.0	-3.0			4.2	4.4	4.3	-4.5	-2.3			
Local Government	43.0	43.0	42.5	0.0	1.2			2.9	3.0	3.0	-3.3	-3.3			
Local Govt. Education	22.7	23.0	22.7	-1.3	0.0										
Hospitals	5.7	5.7	5.6	0.0	1.8										

Note: Current Employment Statistics (CES) estimates include all full- and part-time wage and salary workers in nonagricultural establishments who worked or received pay during the week which includes the 12th of the month. Self-employed, domestic services, and personnel of the armed forces are excluded. Data are not seasonally adjusted. Wyoming, Laramie County, and Natrona County are published in cooperation with the Bureau of Labor Statistics.

(p) Preliminary. (r) Revised. (b) Benchmarked.

# Wyoming Nonagricultural Wage and Salary Employment

(Continued)

	Employment in		Percent Change		
	Thousands		Total Employment		
	Apr05(p)	Mar05(r)	Apr04(b)	Apr05	Apr05
<b>CAMPBELL COUNTY</b>					
<b>TOTAL NONAG. WAGE &amp; SALARY EMPLOYMENT</b>	<b>21.9</b>	<b>21.8</b>	<b>21.6</b>	<b>0.5</b>	<b>1.4</b>
<b>TOTAL PRIVATE</b>	<b>17.9</b>	<b>17.8</b>	<b>17.7</b>	<b>0.6</b>	<b>1.1</b>
<b>GOODS PRODUCING</b>	<b>8.6</b>	<b>8.6</b>	<b>8.5</b>	<b>0.0</b>	<b>1.2</b>
Natural Resources & Mining	6.3	6.3	6.0	0.0	5.0
Construction	1.8	1.8	2.0	0.0	-10.0
Manufacturing	0.5	0.5	0.5	0.0	0.0
<b>SERVICE PROVIDING</b>	<b>13.3</b>	<b>13.2</b>	<b>13.1</b>	<b>0.8</b>	<b>1.5</b>
Trade, Transport., & Utilities	4.1	4.0	4.0	2.5	2.5
Information	0.2	0.2	0.2	0.0	0.0
Financial Activities	0.5	0.5	0.5	0.0	0.0
Professional & Bus. Services	1.3	1.3	1.3	0.0	0.0
Educational & Health Serv.	0.7	0.7	0.7	0.0	0.0
Leisure & Hospitality	1.7	1.7	1.7	0.0	0.0
Other Services	0.8	0.8	0.8	0.0	0.0
<b>TOTAL GOVERNMENT</b>	<b>4.0</b>	<b>4.0</b>	<b>3.9</b>	<b>0.0</b>	<b>2.6</b>
<b>SWEETWATER COUNTY</b>					
<b>TOTAL NONAG. WAGE &amp; SALARY EMPLOYMENT</b>	<b>21.6</b>	<b>21.3</b>	<b>21.0</b>	<b>1.4</b>	<b>2.9</b>
<b>TOTAL PRIVATE</b>	<b>17.3</b>	<b>17.0</b>	<b>16.7</b>	<b>1.8</b>	<b>3.6</b>
<b>GOODS PRODUCING</b>	<b>7.0</b>	<b>7.0</b>	<b>6.8</b>	<b>0.0</b>	<b>2.9</b>
Natural Resources & Mining	4.4	4.5	4.0	-2.2	10.0
Construction	1.5	1.4	1.6	7.1	-6.3
Manufacturing	1.1	1.1	1.2	0.0	-8.3
<b>SERVICE PROVIDING</b>	<b>14.6</b>	<b>14.3</b>	<b>14.2</b>	<b>2.1</b>	<b>2.8</b>
Trade, Transport., & Utilities	4.5	4.4	4.4	2.3	2.3
Information	0.2	0.2	0.2	0.0	0.0
Financial Activities	0.7	0.7	0.7	0.0	0.0
Professional & Bus. Services	1.1	1.0	1.0	10.0	10.0
Educational & Health Serv.	0.9	0.9	0.9	0.0	0.0
Leisure & Hospitality	2.3	2.2	2.1	4.5	9.5
Other Services	0.6	0.6	0.6	0.0	0.0
<b>TOTAL GOVERNMENT</b>	<b>4.3</b>	<b>4.3</b>	<b>4.3</b>	<b>0.0</b>	<b>0.0</b>
<b>TETON COUNTY</b>					
<b>TOTAL NONAG. WAGE &amp; SALARY EMPLOYMENT</b>	<b>14.8</b>	<b>15.3</b>	<b>14.8</b>	<b>-3.3</b>	<b>0.0</b>
<b>TOTAL PRIVATE</b>	<b>12.8</b>	<b>13.1</b>	<b>12.7</b>	<b>-2.3</b>	<b>0.8</b>
<b>GOODS PRODUCING</b>	<b>1.9</b>	<b>1.8</b>	<b>2.0</b>	<b>5.6</b>	<b>-5.0</b>
Nat. Res., Mining & Const.	1.7	1.6	1.8	6.2	-5.6
Manufacturing	0.2	0.2	0.2	0.0	0.0
<b>SERVICE PROVIDING</b>	<b>12.9</b>	<b>13.5</b>	<b>12.8</b>	<b>-4.4</b>	<b>0.8</b>
Trade, Transport., & Utilities	2.2	2.2	2.1	0.0	4.8
Information	0.3	0.3	0.3	0.0	0.0
Financial Activities	0.8	0.8	0.8	0.0	0.0
Professional & Bus. Services	1.5	1.3	1.5	15.4	0.0
Educational & Health Serv.	0.8	0.8	0.7	0.0	14.3
Leisure & Hospitality	4.9	5.5	4.9	-10.9	0.0
Other Services	0.4	0.4	0.4	0.0	0.0
<b>TOTAL GOVERNMENT</b>	<b>2.0</b>	<b>2.2</b>	<b>2.1</b>	<b>-9.1</b>	<b>-4.8</b>

## State Unemployment Rates April 2005 (Not Seasonally Adjusted)

State	Unemp. Rate
Puerto Rico	11.4
Alaska	7.1
District of Columbia	6.9
Oregon	6.7
Michigan	6.6
Mississippi	6.3
South Carolina	6.1
Ohio	5.9
Illinois	5.8
New Mexico	5.8
Tennessee	5.6
Washington	5.5
Kentucky	5.4
Missouri	5.4
Indiana	5.3
Texas	5.3
West Virginia	5.3
California	5.2
Colorado	5.2
Maine	5.2
North Carolina	5.1
Kansas	4.9
<b>United States</b>	<b>4.9</b>
Arkansas	4.8
Connecticut	4.8
Utah	4.8
Arizona	4.7
Georgia	4.7
New York	4.7
Wisconsin	4.7
Louisiana	4.6
Pennsylvania	4.6
Rhode Island	4.6
Iowa	4.5
Massachusetts	4.5
Montana	4.5
Idaho	4.3
Maryland	4.1
Minnesota	4.1
Oklahoma	4.1
Florida	4.0
Nevada	4.0
New Jersey	3.9
Alabama	3.8
Delaware	3.8
Nebraska	3.8
Vermont	3.8
<b>Wyoming</b>	<b>3.8</b>
South Dakota	3.6
New Hampshire	3.5
North Dakota	3.5
Virginia	3.4
Hawaii	2.8

## Economic Indicators

by: Margaret Hiatt, Administrative/Survey Support Specialist

*The number of Wyoming building permits for single family homes increased 14.9 percent over the year.*

	Apr 2005 ____(p)____	Mar 2005 ____(r)____	Apr 2004 ____(b)____	Percent Change Month	Year
Wyoming Total Civilian Labor Force	281,776	282,027	278,163	-0.1	1.3
Unemployed	10,661	11,075	10,890	-3.7	-2.1
Employed	271,115	270,952	267,273	0.1	1.4
Wyoming Unemp. Rate/Seasonally Adjusted	3.8%/3.5%	3.9%/3.1%	3.9%/3.6%	N/A	N/A
U.S. Unemployment Rate/Seasonally Adjusted	4.9%/5.2%	5.4%/5.2%	5.4%/5.5%	N/A	N/A
U.S. Multiple Jobholders	7,437,000	7,621,000	7,239,000	-2.4	2.7
As a percent of all workers	5.3%	5.5%	5.2%	N/A	N/A
U.S. Discouraged Workers	393,000	480,000	492,000	-18.1	-20.1
U.S. Part-Time for Economic Reasons	4,150,000	4,514,000	4,411,000	-8.1	-5.9
Hours & Earnings for Production Workers					
Wyoming Mining					
Average Weekly Earnings	\$1,082.06	\$1,055.24	\$1,013.47	2.5	6.8
Average Weekly Hours	47.9	44.6	43.2	7.4	10.9
U.S. Mining Hours & Earnings					
Average Weekly Earnings	\$873.54	\$859.25	\$827.96	1.7	5.5
Average Weekly Hours	46.0	45.9	44.9	0.2	2.4
Wyoming Manufacturing Hours & Earnings					
Average Weekly Earnings	\$707.74	\$668.34	\$638.39	5.9	10.9
Average Weekly Hours	41.1	39.5	40.1	4.1	2.5
U.S. Manufacturing Hours & Earnings					
Average Weekly Earnings	\$662.13	\$662.56	\$652.04	-0.1	1.5
Average Weekly Hours	40.3	40.4	40.6	-0.2	-0.7
Wyoming Unemployment Insurance					
Weeks Compensated	12,598	19,890	15,764	-36.7	-20.1
Benefits Paid	\$2,972,231	\$4,717,474	\$3,664,823	-37.0	-18.9
Average Weekly Benefit Payment	\$235.93	\$237.18	\$232.48	-0.5	1.5
State Insured Covered Jobs	232,373	229,712	231,208	1.2	0.5
Insured Unemployment Rate	1.5%	1.8%	1.8%	N/A	N/A
Consumer Price Index (U) for All U.S. Urban Consumers (1982 to 1984 = 100) - All Items					
Food & Beverages	194.6	193.3	188.0	0.7	3.5
Housing	190.7	189.6	185.0	0.6	3.1
Apparel	194.4	194.1	188.4	0.2	3.2
Transportation	123.7	123.5	124.3	0.2	-0.5
Medical Care	173.2	168.8	161.8	2.6	7.0
Recreation (Dec. 1997=100)	321.5	320.7	308.3	0.2	4.3
Education & Comm. (Dec. 1997=100)	109.2	109.0	109.0	0.2	0.2
Other Goods & Services	112.9	112.7	110.9	0.2	1.8
Other Goods & Services	311.6	311.2	303.6	0.1	2.6
Producer Prices (1982 to 1984 = 100) - All Commodities	155.0	153.6	144.8	0.9	7.0
Wyoming Building Permits (New Privately Owned Housing Units Authorized)					
Total Units	296	253	269	17.0	10.0
Valuation	\$54,118,000	\$52,681,000	\$48,589,000	2.7	11.4
Single Family Homes	262	226	228	15.9	14.9
Valuation	\$51,707,000	\$50,538,000	\$45,501,000	2.3	13.6
Baker Hughes North American Rotary Rig Count for WY	75	72	61	4.2	23.0

(p) Preliminary. (r) Revised. (b) Benchmarked.

# Wyoming County Unemployment Rates

by: Brad Payne, Senior Economist

*Almost all Wyoming county unemployment rates were stable or decreased from March to April 2005.*

REGION County	Labor Force			Employed			Unemployed			Unemployment Rate		
	Apr 2005 (p)	Mar 2005 (r)	Apr 2004 (b)	Apr 2005 (p)	Mar 2005 (r)	Apr 2004 (b)	Apr 2005 (p)	Mar 2005 (r)	Apr 2004 (b)	Apr 2005 (p)	Mar 2005 (r)	Apr 2004 (b)
<b>NORTHWEST</b>	<b>44,697</b>	<b>44,497</b>	<b>43,929</b>	<b>42,652</b>	<b>42,248</b>	<b>41,862</b>	<b>2,045</b>	<b>2,249</b>	<b>2,067</b>	<b>4.6</b>	<b>5.1</b>	<b>4.7</b>
Big Horn	5,448	5,432	5,296	5,200	5,141	5,060	248	291	236	4.6	5.4	4.5
Fremont	18,389	18,322	17,879	17,505	17,364	16,912	884	958	967	4.8	5.2	5.4
Hot Springs	2,363	2,326	2,414	2,264	2,227	2,320	99	99	94	4.2	4.3	3.9
Park	14,167	14,078	14,122	13,557	13,409	13,537	610	669	585	4.3	4.8	4.1
Washakie	4,330	4,339	4,218	4,126	4,107	4,033	204	232	185	4.7	5.3	4.4
<b>NORTHEAST</b>	<b>49,161</b>	<b>49,072</b>	<b>48,757</b>	<b>47,599</b>	<b>47,387</b>	<b>47,158</b>	<b>1,562</b>	<b>1,685</b>	<b>1,599</b>	<b>3.2</b>	<b>3.4</b>	<b>3.3</b>
Campbell	23,470	23,513	23,357	22,856	22,896	22,686	614	617	671	2.6	2.6	2.9
Crook	3,246	3,241	3,083	3,134	3,116	2,959	112	125	124	3.5	3.9	4.0
Johnson	3,726	3,705	3,704	3,598	3,547	3,591	128	158	113	3.4	4.3	3.1
Sheridan	15,537	15,428	15,483	14,954	14,786	14,918	583	642	565	3.8	4.2	3.6
Weston	3,182	3,185	3,130	3,057	3,042	3,004	125	143	126	3.9	4.5	4.0
<b>SOUTHWEST</b>	<b>57,753</b>	<b>57,877</b>	<b>56,993</b>	<b>55,566</b>	<b>55,860</b>	<b>54,721</b>	<b>2,187</b>	<b>2,017</b>	<b>2,272</b>	<b>3.8</b>	<b>3.5</b>	<b>4.0</b>
Lincoln	8,896	8,831	9,159	8,570	8,456	8,829	326	375	330	3.7	4.2	3.6
Sublette	4,525	4,573	4,120	4,436	4,479	4,014	89	94	106	2.0	2.1	2.6
Sweetwater	21,970	21,966	21,642	21,268	21,262	20,913	702	704	729	3.2	3.2	3.4
Teton	11,814	11,977	11,132	11,160	11,583	10,480	654	394	652	5.5	3.3	5.9
Uinta	10,548	10,530	10,940	10,132	10,080	10,485	416	450	455	3.9	4.3	4.2
<b>SOUTHEAST</b>	<b>74,916</b>	<b>75,385</b>	<b>74,807</b>	<b>72,000</b>	<b>72,311</b>	<b>71,904</b>	<b>2,916</b>	<b>3,074</b>	<b>2,903</b>	<b>3.9</b>	<b>4.1</b>	<b>3.9</b>
Albany	20,391	20,867	20,787	19,793	20,281	20,170	598	586	617	2.9	2.8	3.0
Goshen	6,068	6,031	5,880	5,805	5,727	5,626	263	304	254	4.3	5.0	4.3
Laramie	43,102	43,196	42,808	41,284	41,267	41,018	1,818	1,929	1,790	4.2	4.5	4.2
Niobrara	1,154	1,137	1,154	1,107	1,090	1,112	47	47	42	4.1	4.1	3.6
Platte	4,201	4,154	4,178	4,011	3,946	3,978	190	208	200	4.5	5.0	4.8
<b>CENTRAL</b>	<b>55,250</b>	<b>55,192</b>	<b>53,678</b>	<b>53,298</b>	<b>53,145</b>	<b>51,627</b>	<b>1,952</b>	<b>2,047</b>	<b>2,051</b>	<b>3.5</b>	<b>3.7</b>	<b>3.8</b>
Carbon	7,534	7,486	7,840	7,212	7,139	7,490	322	347	350	4.3	4.6	4.5
Converse	6,531	6,553	6,485	6,280	6,289	6,233	251	264	252	3.8	4.0	3.9
Natrona	41,185	41,153	39,353	39,806	39,717	37,904	1,379	1,436	1,449	3.3	3.5	3.7
<b>STATEWIDE</b>	<b>281,776</b>	<b>282,027</b>	<b>278,163</b>	<b>271,115</b>	<b>270,952</b>	<b>267,273</b>	<b>10,661</b>	<b>11,075</b>	<b>10,890</b>	<b>3.8</b>	<b>3.9</b>	<b>3.9</b>
Statewide Seasonally Adjusted .....										3.5	3.1	3.6
U.S.....										4.9	5.4	5.4
U.S. Seasonally Adjusted.....										5.2	5.2	5.5

Prepared in cooperation with the Bureau of Labor Statistics. Benchmarked 03/05. Run Date 05/05.

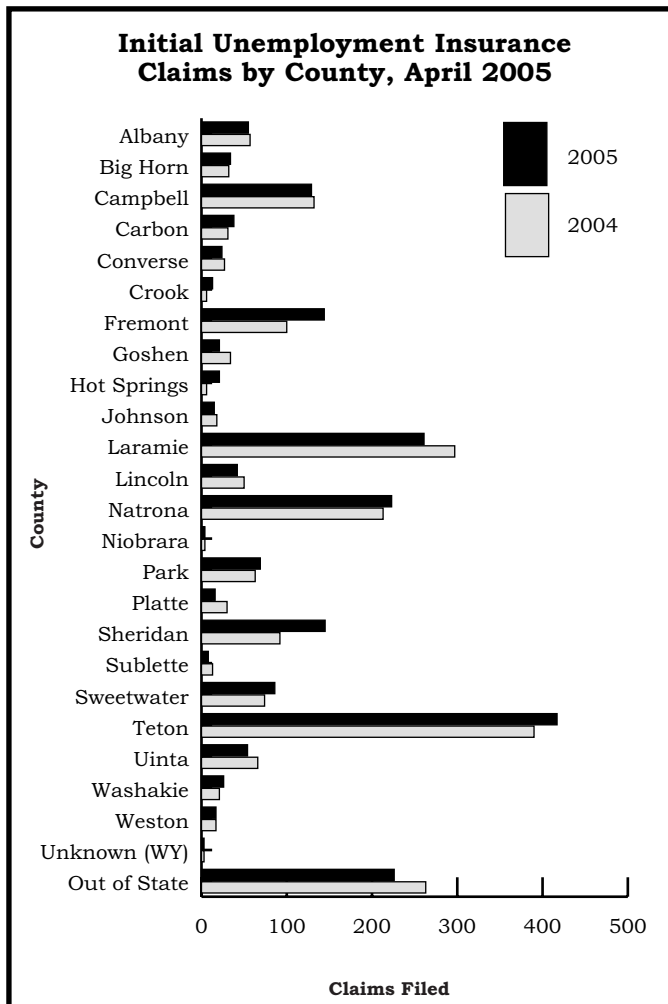
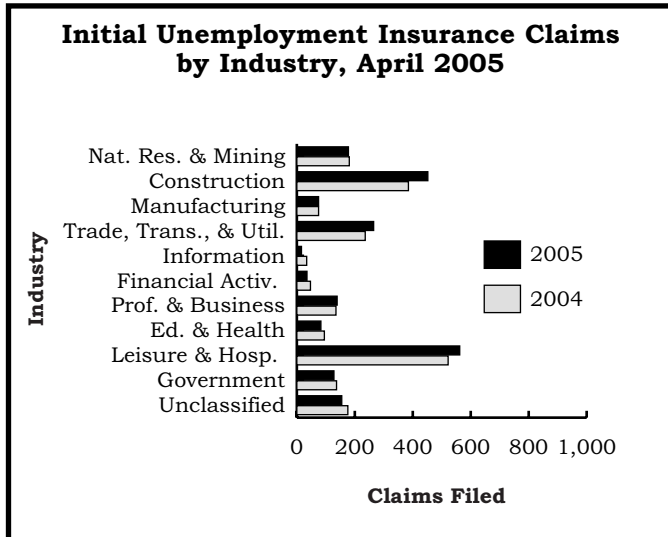
Data are not seasonally adjusted except where otherwise specified.

(p) Preliminary. (r) Revised. (b) Benchmarked.

## Wyoming Normalized Unemployment Insurance Statistics: Initial Claims

by: Douglas W. Leonard, Senior Research Analyst

April 2005 initial claims were 2.5 percent higher than one year ago. This marks the first time in several months an over-the-year increase occurred.



WYOMING STATEWIDE	Claims Filed		Percent Change		
	Apr05	Mar05	Apr04	Apr05	
<b>TOTAL CLAIMS FILED</b>	<b>2,088</b>	<b>1,715</b>	<b>2,038</b>	<b>21.7</b>	<b>2.5</b>
TOTAL GOODS PRODUCING	705	690	641	2.2	10.0
Natural Resources and Mining	178	135	181	31.9	-1.7
Mining	138	112	150	23.2	-8.0
Oil & Gas Extraction	12	9	17	33.3	-29.4
Construction	452	449	385	0.7	17.4
Manufacturing	75	106	75	-29.2	0.0
TOTAL SERVICE PROVIDING	1,135	768	1,119	47.8	1.4
Trade, Trans., Storage, & Util.	265	226	236	17.3	12.3
Wholesale Trade	30	27	28	11.1	7.1
Retail Trade	144	130	133	10.8	8.3
Trans., Storage, & Utilities	91	69	75	31.9	21.3
Information	16	19	34	-15.8	-52.9
Financial Activities	35	32	47	9.4	-25.5
Professional & Business Serv.	139	95	135	46.3	3.0
Educational & Health Services	83	80	95	3.8	-12.6
Leisure & Hospitality	562	293	522	91.8	7.7
Other Services	35	23	50	52.2	-30.0
TOTAL GOVERNMENT	128	123	137	4.1	-6.6
Federal Government	48	64	49	-25.0	-2.0
State Government	17	23	18	-26.1	-5.6
Local Government	63	36	70	75.0	-10.0
Local Education	6	6	13	0.0	-53.8
UNCLASSIFIED	120	134	141	-10.4	-14.9

### LARAMIE COUNTY

TOTAL CLAIMS FILED	260	248	295	4.8	-11.9
TOTAL GOODS PRODUCING	100	100	96	0.0	4.2
Construction	88	87	80	1.1	10.0
TOTAL SERVICE PROVIDING	129	122	169	5.7	-23.7
Trade, Trans., Storage, & Util.	32	52	47	-38.5	-31.9
Financial Activities	14	6	10	133.3	40.0
Professional & Business Serv.	29	18	40	61.1	-27.5
Educational & Health Services	21	12	17	75.0	23.5
Leisure & Hospitality	25	27	14	-7.4	78.6
TOTAL GOVERNMENT	20	16	20	25.0	0.0
UNCLASSIFIED	11	10	10	10.0	10.0

### NATRONA COUNTY

TOTAL CLAIMS FILED	220	217	212	1.4	3.8
TOTAL GOODS PRODUCING	98	103	80	-4.9	22.5
Construction	69	81	55	-14.8	25.5
TOTAL SERVICE PROVIDING	104	104	104	0.0	0.0
Trade, Trans., Storage, & Util.	27	33	22	-18.2	22.7
Financial Activities	4	7	9	-42.9	-55.6
Professional & Business Serv.	28	11	25	154.5	12.0
Educational & Health Services	14	22	25	-36.4	-44.0
Leisure & Hospitality	22	22	17	0.0	29.4
TOTAL GOVERNMENT	10	6	15	66.7	-33.3
UNCLASSIFIED	8	4	13	100.0	-38.5

# Wyoming Normalized Unemployment Insurance Statistics: Continued Claims by: Douglas W. Leonard, Senior Research Analyst

Statewide continued claims declined by 16.6 percent over the year and 20.4 percent over the month. The over-the-year percentage decline was the largest seen in a year.

WYOMING STATEWIDE	Percent Change			
	Claims Filed		Claims Filed	
	Apr05	Mar05	Apr04	Apr05
<b>TOTAL WEEKS CLAIMED</b>	<b>15,385</b>	<b>19,318</b>	<b>18,440</b>	<b>-20.4 -16.6</b>
<b>TOTAL UNIQUE CLAIMANTS</b>	<b>5,065</b>	<b>5,056</b>	<b>5,941</b>	<b>0.2 -14.7</b>
<b>TOTAL GOODS PRODUCING</b>	<b>5,359</b>	<b>7,515</b>	<b>6,460</b>	<b>-28.7 -17.0</b>
Natural Resources and Mining	931	991	1,075	-6.1 -13.4
Mining	794	830	887	-4.3 -10.5
Oil & Gas Extraction	94	110	163	-14.5 -42.3
Construction	3,517	5,404	4,430	-34.9 -20.6
Manufacturing	911	1,120	955	-18.7 -4.6
<b>TOTAL SERVICE PROVIDING</b>	<b>7,333</b>	<b>8,374</b>	<b>8,889</b>	<b>-12.4 -17.5</b>
Trade, Trans., Storage, & Util.	2,032	2,478	2,163	-18.0 -6.1
Wholesale Trade	242	333	266	-27.3 -9.0
Retail Trade	1,212	1,454	1,375	-16.6 -11.9
Trans., Storage, & Utilities	578	691	522	-16.4 10.7
Information	225	355	278	-36.6 -19.1
Financial Activities	371	419	572	-11.5 -35.1
Professional & Business Serv.	1,196	1,668	1,728	-28.3 -30.8
Educational & Health Serv.	714	774	848	-7.8 -15.8
Leisure & Hospitality	2,472	2,328	2,898	6.2 -14.7
Other Services	323	352	402	-8.2 -19.7
<b>TOTAL GOVERNMENT</b>	<b>1,720</b>	<b>2,164</b>	<b>1,842</b>	<b>-20.5 -6.6</b>
Federal Government	848	1,141	893	-25.7 -5.0
State Government	235	261	266	-10.0 -11.7
Local Government	637	762	683	-16.4 -6.7
Local Education	127	150	172	-15.3 -26.2
<b>UNCLASSIFIED</b>	<b>973</b>	<b>1,265</b>	<b>1,249</b>	<b>-23.1 -22.1</b>

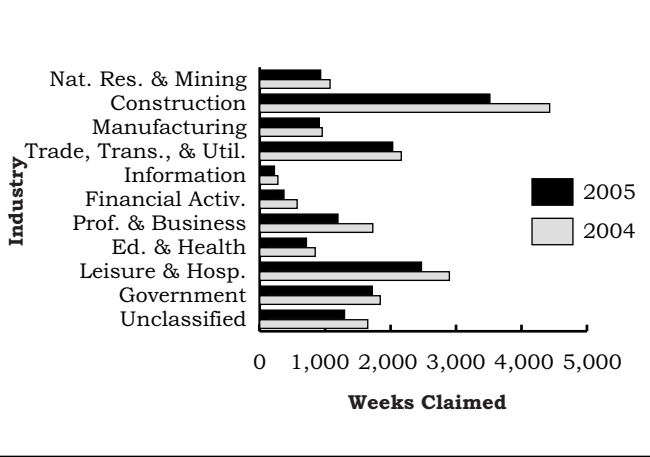
## LARAMIE COUNTY

<b>TOTAL WEEKS CLAIMED</b>	<b>2,131</b>	<b>2,779</b>	<b>2,792</b>	<b>-23.3 -23.7</b>
<b>TOTAL UNIQUE CLAIMANTS</b>	<b>717</b>	<b>740</b>	<b>874</b>	<b>-3.1 -18.0</b>
<b>TOTAL GOODS PRODUCING</b>	<b>735</b>	<b>1,131</b>	<b>837</b>	<b>-35.0 -12.2</b>
Construction	643	1,007	688	-36.1 -6.5
<b>TOTAL SERVICE PROVIDING</b>	<b>1,122</b>	<b>1,348</b>	<b>1,588</b>	<b>-16.8 -29.3</b>
Trade, Trans., Storage, & Util.	403	462	323	-12.8 24.8
Financial Activities	85	79	129	7.6 -34.1
Professional & Business Serv.	230	333	637	-30.9 -63.9
Educational & Health Services	117	94	144	24.5 -18.8
Leisure & Hospitality	159	136	124	16.9 28.2
<b>TOTAL GOVERNMENT</b>	<b>203</b>	<b>230</b>	<b>248</b>	<b>-11.7 -18.1</b>
<b>UNCLASSIFIED</b>	<b>71</b>	<b>70</b>	<b>119</b>	<b>1.4 -40.3</b>

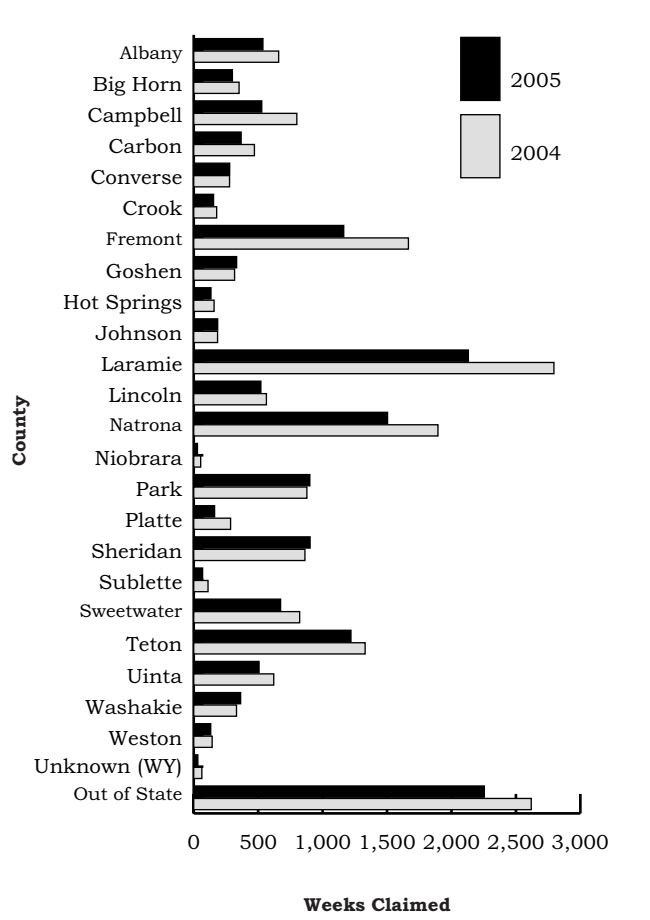
## NATRONA COUNTY

<b>TOTAL WEEKS CLAIMED</b>	<b>1,503</b>	<b>2,019</b>	<b>1,896</b>	<b>-25.6 -20.7</b>
<b>TOTAL UNIQUE CLAIMANTS</b>	<b>484</b>	<b>551</b>	<b>619</b>	<b>-12.2 -21.8</b>
<b>TOTAL GOODS PRODUCING</b>	<b>548</b>	<b>769</b>	<b>628</b>	<b>-28.7 -12.7</b>
Construction	350	589	459	-40.6 -23.7
<b>TOTAL SERVICE PROVIDING</b>	<b>837</b>	<b>1,093</b>	<b>1,143</b>	<b>-23.4 -26.8</b>
Trade, Trans., Storage, & Util.	277	376	326	-26.3 -15.0
Financial Activities	83	87	83	-4.6 0.0
Professional & Business Serv.	155	235	265	-34.0 -41.5
Educational & Health Services	136	150	230	-9.3 -40.9
Leisure & Hospitality	102	152	166	-32.9 -38.6
<b>TOTAL GOVERNMENT</b>	<b>75</b>	<b>99</b>	<b>83</b>	<b>-24.2 -9.6</b>
<b>UNCLASSIFIED</b>	<b>43</b>	<b>58</b>	<b>42</b>	<b>-25.9 2.4</b>

**Continued Unemployment Insurance Claims by Industry, April 2005**



**Continued Unemployment Insurance Claims by County, April 2005**



**Wyoming Department of Employment  
Research & Planning  
P.O. Box 2760  
Casper, WY 82602**

---

**Official Business  
Penalty for Private Use \$300**

**Presorted Standard  
U.S. Postage  
PAID  
Permit No. G-12  
Cheyenne, WY**