

**Registered Nurses in Wyoming Fact Sheet
Prepared for Statewide Nursing Summit
University of Wyoming - June 18, 2004**

**Data Prepared by
William (Tony) Glover
Senior Analyst
Wyoming Department of Employment
Research and Planning
307.473.3837
william.glover@state.wy.us**

Publications Relevant to Data Presented

Glover, W. (2003), "[Nursing in Wyoming Part III.](#)" *Wyoming Labor Force Trends*. [April 2003](#), Wyoming Department of Employment, Research & Planning, Casper, WY.

Glover, W. (2003), "[An Introduction to the Wage Records Applications.](#)" (in pdf) Released to States participating in the Wage Records Application Project. Feb 2003, Wyoming Department of Employment, Research & Planning, Casper, WY.

Glover, W. (2002), "Transaction Data (Turnover); An Application to Occupational Projections and a Strategy for Estimating Replacement Need at the State Level for Registered Nurses." Pending publication as Chapter 5 of Projections Publication. December 2002, Wyoming Department of Employment, Research & Planning, Casper, WY.

Glover, W. (2002), "[Nursing in Wyoming Part II.](#)" *Wyoming Labor Force Trends*. [October 2002](#), Wyoming Department of Employment, Research & Planning, Casper, WY.

Glover, W. (2002), "[Nursing in Wyoming Part I.](#)" *Wyoming Labor Force Trends*. [September 2002](#), Wyoming Department of Employment, Research & Planning, Casper, WY.

Glover, W. (2002), "[Nursing; Supply Shortage or Retention Issue?](#)" (in pdf) Presented April 2002 at the Symposium on LMI Applications of Wage Records for Workforce Investment, St Paul, MN. July 2002, Wyoming Department of Employment, Research & Planning, Casper, WY.

* Most publications, including this one, are available via the Internet at http://doe.state.wy.us/lmi/staff/w_g.htm.

William (Tony) Glover
Senior Analyst
Wyoming Department of Employment
Research and Planning

Registered Nurses in Wyoming Fact Sheet

Prepared for Statewide Nursing Summit

University of Wyoming - June 18, 2004

Figure 1: Number of Nurses⁽¹⁾ in Wyoming Covered⁽²⁾ Employment by Select Industries⁽³⁾ from 1992 to 2003.

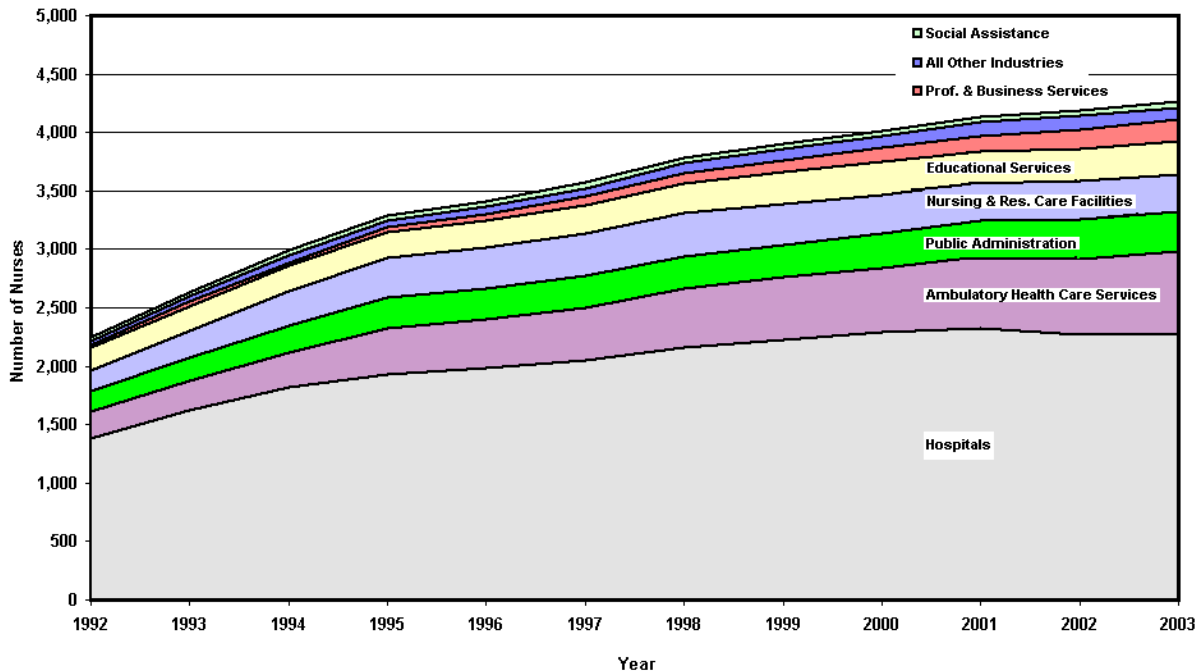


Table 1: Number of Individuals in Wyoming Covered Employment by Select Industries⁽³⁾, RN Status⁽⁴⁾, Number (N), Average Annual Wage (AAW \$)⁽⁵⁾, and Continuous Rate (C-Rate)⁽⁶⁾ in 1993 & 2002.

Select Industries	RN Status	1993			2002		
		N	AAW \$	C-Rate	N	AAW \$	C-Rate
Total All Industries	All	271,686	19,748	65.1	317,976	27,114	64.0
	RN	2,633	28,743	83.3	4,186	41,675	80.5
Professional & Business Services	All	14,998	18,791	56.7	22,803	26,397	55.7
	RN	40	19,709	50.8	169	39,408	50.7
Educational Services	All	27,385	21,572	80.0	30,123	27,640	78.2
	RN	213	24,289	82.6	279	32,901	81.4
Ambulatory Health Care Services	All	5,021	29,997	75.3	7,888	41,790	72.6
	RN	245	23,225	77.2	647	34,392	76.1
Hospitals	All	7,882	22,141	80.8	9,483	32,651	79.6
	RN	1,625	31,102	86.3	2,272	46,421	84.2
Nursing & Residential Care Facilities	All	4,815	12,769	63.4	5,673	19,734	62.5
	RN	231	26,070	75.4	323	39,533	74.8
Social Assistance	All	4,270	10,764	66.0	6,138	15,706	63.5
	RN	38	22,395	78.3	46	27,806	71.4
Public Administration	All	19,951	20,980	79.4	21,853	30,832	78.8
	RN	198	27,956	86.0	339	38,665	84.5
All Other Industries	All	187,364	19,436	61.1	214,015	26,473	60.4
	RN	43	25,094	76.7	111	33,661	80.9

(1) Nurses - Refers to Registered Nurses licensed in the state of Wyoming by the Wyoming State Board of Nursing.

(2) Covered - Refers to Unemployment Insurance covered employment which currently constitutes approximately 95 percent of the employment in Wyoming.

(3) Select Industries - Represents the industry paying the individual the most total wages during the designated year also discussed as Primary Industry.

(4) RN Status - All includes the RNs and all other individual in covered employment and RN only includes Registered Nurses in covered employment.

(5) Average Annual Wage - Average quarterly wage adjusted to a four quarter base.

(6) Continuous Rate - Number of employer to employee transactions that were not hiring or exiting (or stable) as a percent of the total number of employer to employee transactions including hiring, exits, and continuous. Please refer to "An Introduction to the Wage Records Applications" available at <http://doe.state.wy.us/lmi/staff/WRAP.pdf>

Registered Nurses in Wyoming Fact Sheet

Prepared for Statewide Nursing Summit

University of Wyoming - June 18, 2004

Figure 3: Number of Additions⁽¹⁾, Losses⁽²⁾ and Net Flow⁽³⁾ of Nurses in Wyoming Covered Employment from 1993 to 2003.

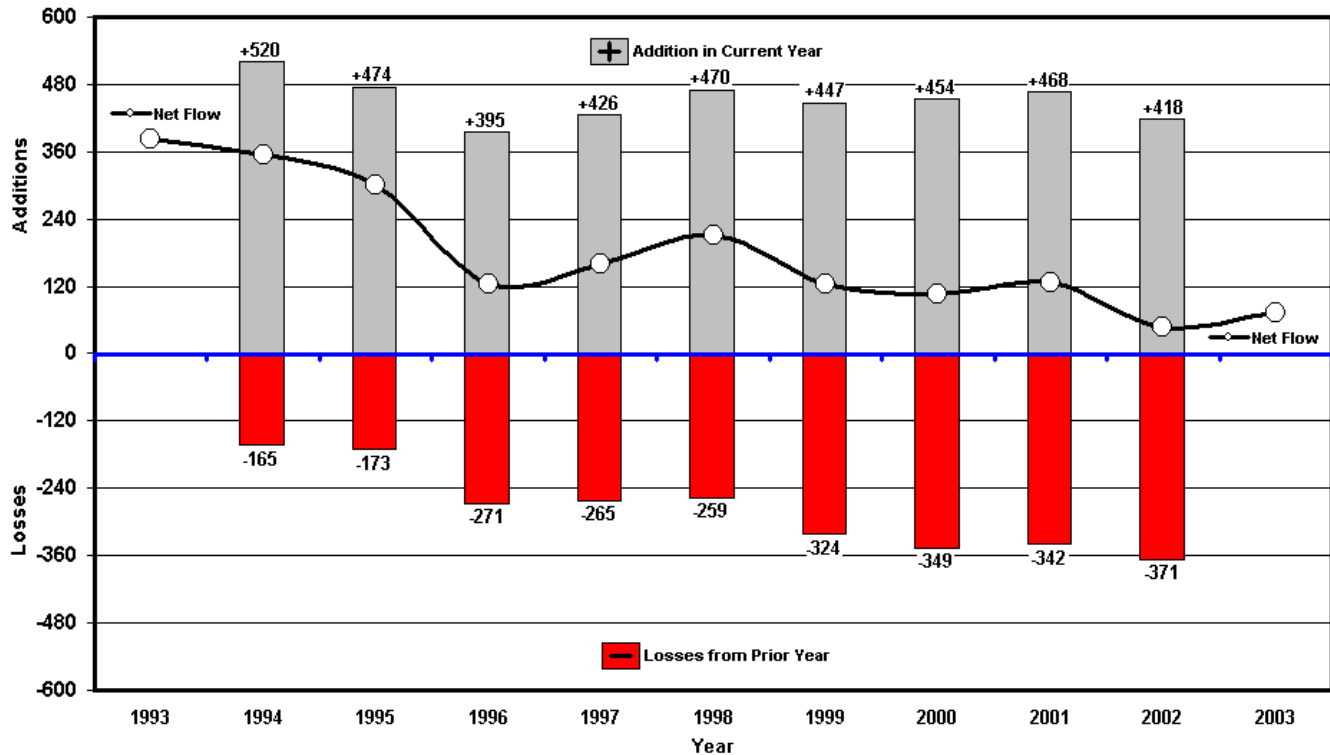


Table 3: Detailed Analysis of Additions to and Losses from the Number Nurses in Wyoming Covered Employment in 2001.

Additions 2001

(Nurses Not Working in Wyoming in 2000 That Did Work in Wyoming in 2001)

State in		Experience		AAW \$ in	AAW \$ in	Avg Age
State in 2000	2001	(4)	N	2000 (5)	2001	in 2001
MOU State (6)	Wyoming	00	0	0	0	0
		01	ND	21,367	29,437	42
		02	ND	29,992	18,941	33
		03+	31	41,871	21,890	44
Unknown (7)	Wyoming	00	114	0	31,825	32
		01	28	0	30,790	32
		02	19	0	25,235	31
		03+	272	0	28,032	48
Total			468	40,801	28,502	42

Losses 2001

(Nurses Working in Wyoming in 2000 That Did Not Work in Wyoming in 2001)

State in 2000	State in 2001	Experience (1)	N	AAW \$ in 2000	AAW \$ in 2001 (2)	Avg Age in 2000
Wyoming MOU State (6)		00	ND	26,702	33,826	28
		01	6	24,537	39,632	37
		02	9	27,563	37,776	34
		03+	115	27,653	40,975	42
Wyoming Unknown (7)		00	ND	33,538	0	36
		01	13	25,056	0	29
		02	9	23,763	0	31
		03+	186	23,373	0	45
Total			342	25,162	40,522	42

(1) Additions - Nurses that were not working in Wyoming covered employment in the prior year that are working in Wyoming covered employment in the current year.

(2) Losses - Nurses working in Wyoming covered employment in the prior year that are not working in Wyoming covered employment in the current year.

(3) Net Flow - Change in the number of nurses from the prior year (i.e., total number of nurses in current year minus the total number of nurses in prior year). Also calculated by subtracting the total losses from the total additions.

(4) Experience - The number of years since graduation from a nursing program.

(5) Average Annual Wage - Average quarterly wage adjusted to a four quarter base and when calculated as a total it only includes Wyoming and MOU state data.

(6) MOU States - States that currently have Wage Records data sharing agreements with Wyoming and include CO, NE, SD, MT, ID, UT, NM, and OK.

(7) Unknown includes employment in a state that Wyoming does not have a data sharing agreement with and could also be death, non-covered employment, or personal exit from labor force.

Registered Nurses in Wyoming Fact Sheet

Prepared for Statewide Nursing Summit

University of Wyoming - June 18, 2004

Figure 4: Number of Nursing Licenses Issued⁽¹⁾ by the Wyoming State Board of Nursing by School of Nursing Education from 1992 to 2003⁽²⁾.

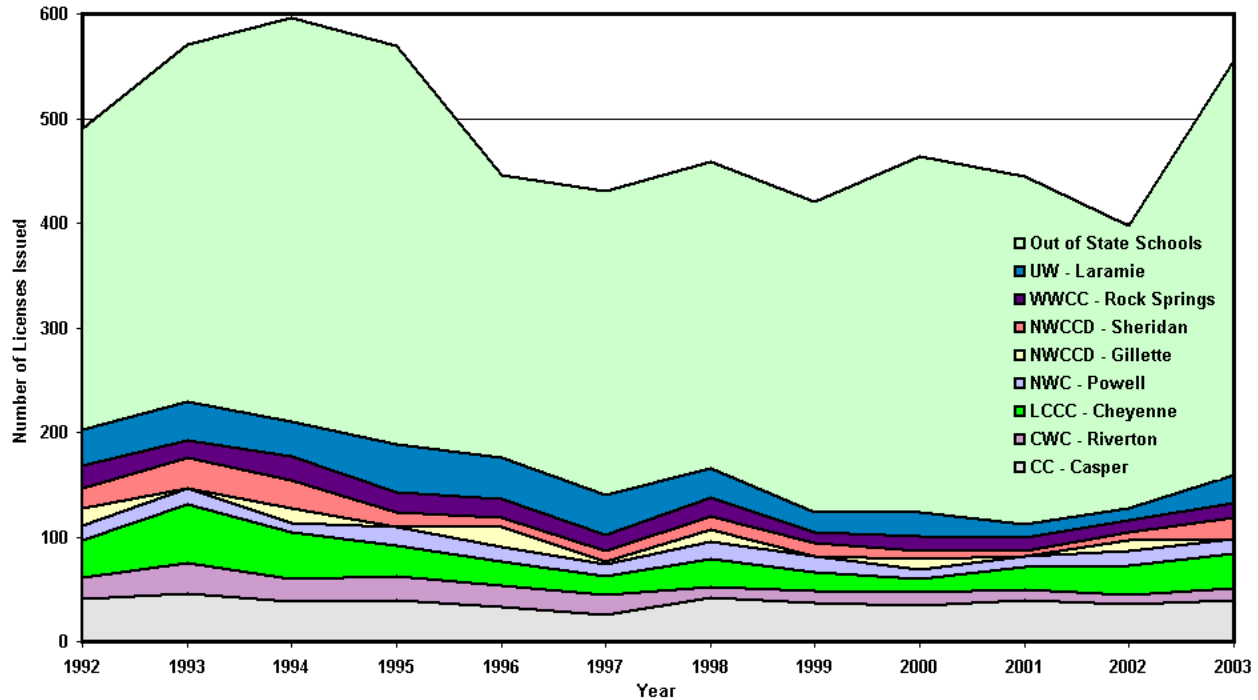


Table 4: Number of Nursing Licenses Issued by the Wyoming State Board of Nursing by School of Nursing Education from 1992 to 2003.

Degree Granting Institution	Year											
	1992	1993	1994	1995	1996	1997	1998	1999	2000	2001	2002	2003
Total Licenses Issued	490	571	596	570	446	430	458	420	464	445	397	556
Total Out of State Schools	287	342	386	382	270	290	292	296	341	333	270	397
Total Wyoming Schools	203	229	210	188	176	140	166	124	123	112	127	159
CC - Casper	41	46	38	40	33	26	42	37	35	40	36	39
CWC - Riverton	20	29	22	23	21	18	10	11	12	10	8	12
LCCC - Cheyenne	36	56	44	29	23	18	27	18	13	21	29	33
NWC - Powell	14	16	9	17	14	12	16	16	9	10	13	14
NWCCD - Gillette	16		14		18	3	12		10		11	
NWCCD - Sheridan	20	29	27	15	10	10	13	12	7	6	8	20
WWCC - Rock Springs	21	16	23	19	17	15	18	10	15	12	11	15
UW - Laramie	35	37	33	45	40	38	28	20	22	13	11	26

(1) Nursing Licenses Issued - Registered Nurses Only. Source is Wyoming State Board of Nursing data.

(2) The years represented in Table 4 and Figure 4 correspond to an academic school year. For example, 1992 data are for licenses issued from July 1991 to June 1992.

Registered Nurses in Wyoming Fact Sheet

Prepared for Statewide Nursing Summit

University of Wyoming - June 18, 2004

Addendum Table: Projected Demand for Registered Nurses 2000 to 2010 and average Hourly Wage by Year

State	Base Employment 2000	Projected Employment 2010	Annual Jobs Created	Percent Change	hourly2000	hourly2001	Hourly2002	Wage Rank 2002
Alabama	33850	42100	830	24	20.09	20.44	21.21	38
Alaska	4450	8550	500	93	25.08	26.26	26.78	5
Arizona	N/A	N/A	N/A	N/A	22.63	22.83	23.94	17
Arkansas	17600	25850	1180	47	18.64	19.05	19.80	49
California	N/A	N/A	N/A	N/A	26.99	27.85	29.01	1
Colorado	28350	35650	1300	26	21.90	22.78	23.47	18
Connecticut	30550	36750	1240	20	24.65	25.55	26.40	8
Delaware	N/A	N/A	N/A	N/A	24.86	25.41	25.90	11
District of Columbia	9750	10550	80	9	24.36	25.82	26.68	6
Florida	149450	207600	5820	39	21.04	21.81	22.62	26
Georgia	55050	73200	2920	33	21.38	21.84	22.53	28
Guam	N/A	N/A	N/A	N/A	N/A	19.22	19.38	52
Hawaii	8050	9850	340	22	26.46	27.10	27.55	3
Idaho	7350	10100	420	37	21.00	21.63	22.14	33
Illinois	105800	125900	4150	19	21.79	22.52	22.71	24
Indiana	47700	60100	2210	26	19.95	20.36	20.94	40
Iowa	26950	32350	1090	20	17.98	18.81	19.14	53
Kansas	22100	29000	1140	31	18.59	19.39	19.84	48
Kentucky	33800	44150	1710	31	19.58	20.29	21.03	39
Louisiana	34550	40650	1310	18	20.62	21.20	21.72	35
Maine	12200	14900	520	22	20.31	21.67	22.30	30
Maryland	31350	38450	710	23	26.74	27.29	29.00	2
Massachusetts	N/A	N/A	N/A	N/A	24.02	25.26	26.48	7
Michigan	76850	88300	2690	15	22.78	23.32	24.06	16
Minnesota	48600	59600	1100	23	23.69	24.21	25.14	13
Mississippi	23150	30450	1200	31	19.62	19.85	20.70	41
Missouri	50600	60000	1960	19	20.07	20.84	21.55	37
Montana	7700	9400	320	22	18.14	19.41	20.02	47
Nebraska	16150	20650	780	28	18.63	19.83	20.41	44
Nevada	11550	15950	680	38	24.62	25.41	25.54	12
New Hampshire	11450	14900	580	30	20.31	21.35	22.07	34
New Jersey	78850	99250	2040	26	24.50	25.90	26.36	9
New Mexico	11900	15900	400	33	20.73	21.74	22.63	25
New York	163950	197500	6670	20	24.36	25.71	26.97	4
North Carolina	63450	85300	3470	34	20.79	21.68	22.29	31
North Dakota	N/A	N/A	N/A	N/A	19.60	20.08	20.67	42
Ohio	101250	119050	3810	18	20.81	21.78	22.50	29
Oklahoma	20500	25400	900	24	19.36	20.07	20.49	43
Oregon	N/A	N/A	N/A	N/A	23.66	24.33	24.96	14
Pennsylvania	115300	131750	3970	14	21.12	22.32	23.05	19
Puerto Rico	N/A	N/A	N/A	N/A	10.03	10.39	10.59	54
Rhode Island	12250	15050	530	23	22.88	24.30	24.92	15
South Carolina	27300	35550	830	30	21.71	22.58	22.99	21
South Dakota	N/A	N/A	N/A	N/A	18.38	19.05	19.52	50
Tennessee	52550	67100	2520	28	21.31	22.18	22.25	32
Texas	132200	167600	6200	27	20.97	22.29	22.76	23
Utah	11650	16900	810	45	21.00	22.00	22.54	27
Vermont	3800	5100	210	34	20.43	21.23	21.56	36
Virgin Islands	N/A	N/A	N/A	N/A	17.87	20.45	19.43	51
Virginia	45300	59000	2290	30	20.85	22.13	22.89	22
Washington	N/A	N/A	N/A	N/A	24.22	25.10	25.92	10
West Virginia	16450	19000	590	16	18.80	19.53	20.09	46
Wisconsin	46550	57200	2010	23	21.61	22.47	23.00	20
Wyoming	3650	4550	90	24	17.93	19.04	20.19	45

Source - Bureau of Labor Statistics. Wages by Area and Occupation. (<http://stats.bls.gov/bls/blswage.htm>) and State Occupational Projections 2000 to 2010 (<http://www.projectionscentral.com>).

Bold italicised rows represent Wyoming's border states.

William (Tony) Glover
Senior Analyst
Wyoming Department of Employment
Research and Planning