



Wyoming's Labor Market: A Brief Overview

Doug Leonard, Principal Economist
Wyoming Department of Workforce Services, Research & Planning
Doug.leonard@wyo.gov
(307) 473-3811

Casper Kiwanis Club, February 2012



Outline

- Introduction
 - Who is Research & Planning
 - Recent history
- Long-term employment trends
- Labor force dynamics
- The unemployed
- New hires
- Wyoming's competition



Research & Planning

- Research & Planning is a separate, exclusively statistical entity.
- Research & Planning collects, analyzes, and publishes timely and accurate labor market information (LMI) meeting established statistical standards.
- LMI makes the labor market more efficient by providing the public and the public's representatives with the basis for informed decision making.



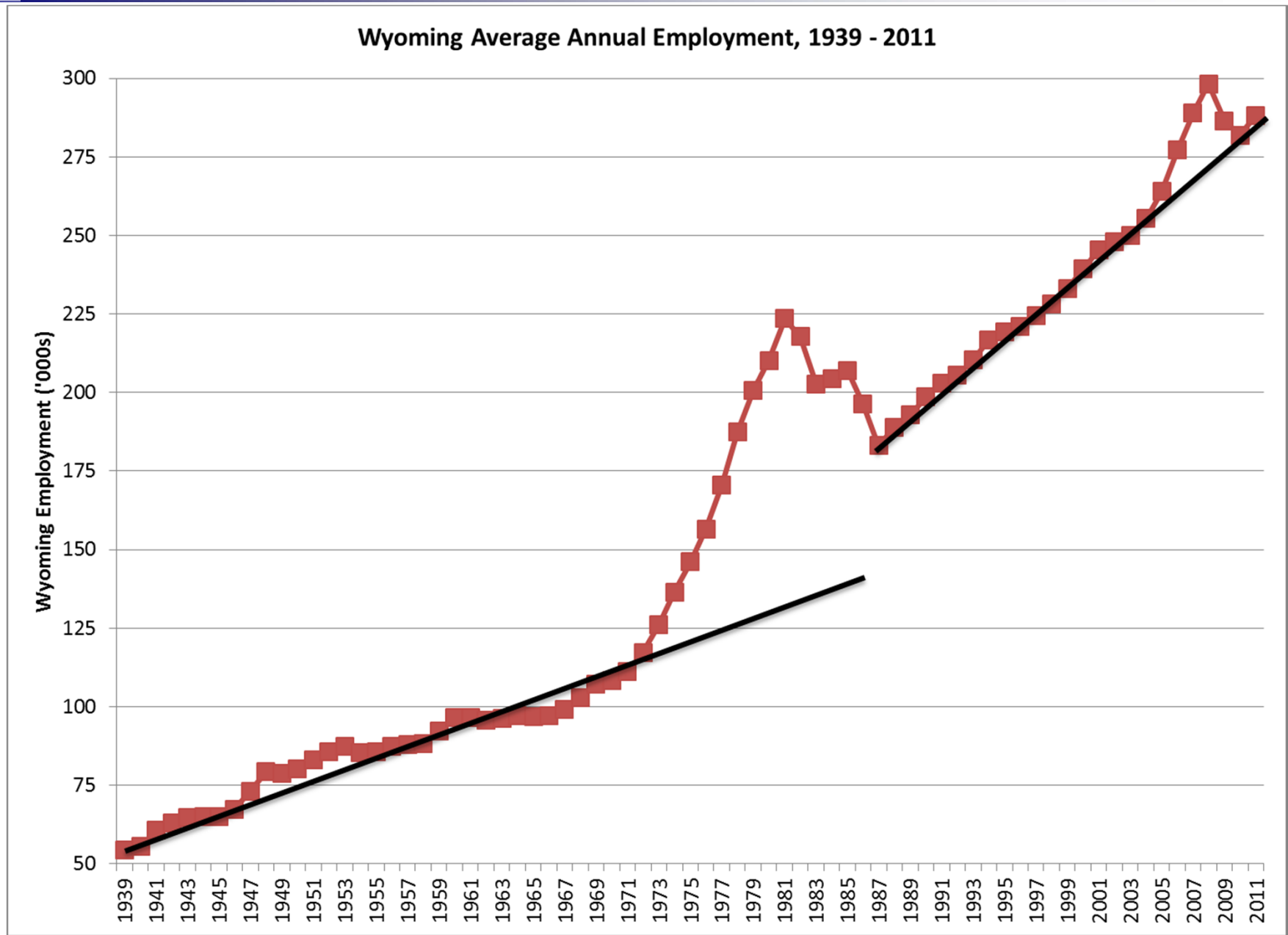
Wyoming's Labor Market: What Happened?

- Wyoming lost 17,900 jobs from December 2008 to December 2009 (-6.0%)
- Wyoming gained 4,000 jobs from December 2009 to December 2010 (+1.4%) and 6,300 jobs (+2.2%) from December 2010 to December 2011
- Unemployment Insurance benefit payments reached a record high in 2009
- The average annual wage for men decreased in 2009
- Many of those who lost jobs in 2009 remained unemployed through the second quarter of 2010
- Re-employment rates improved in 2011

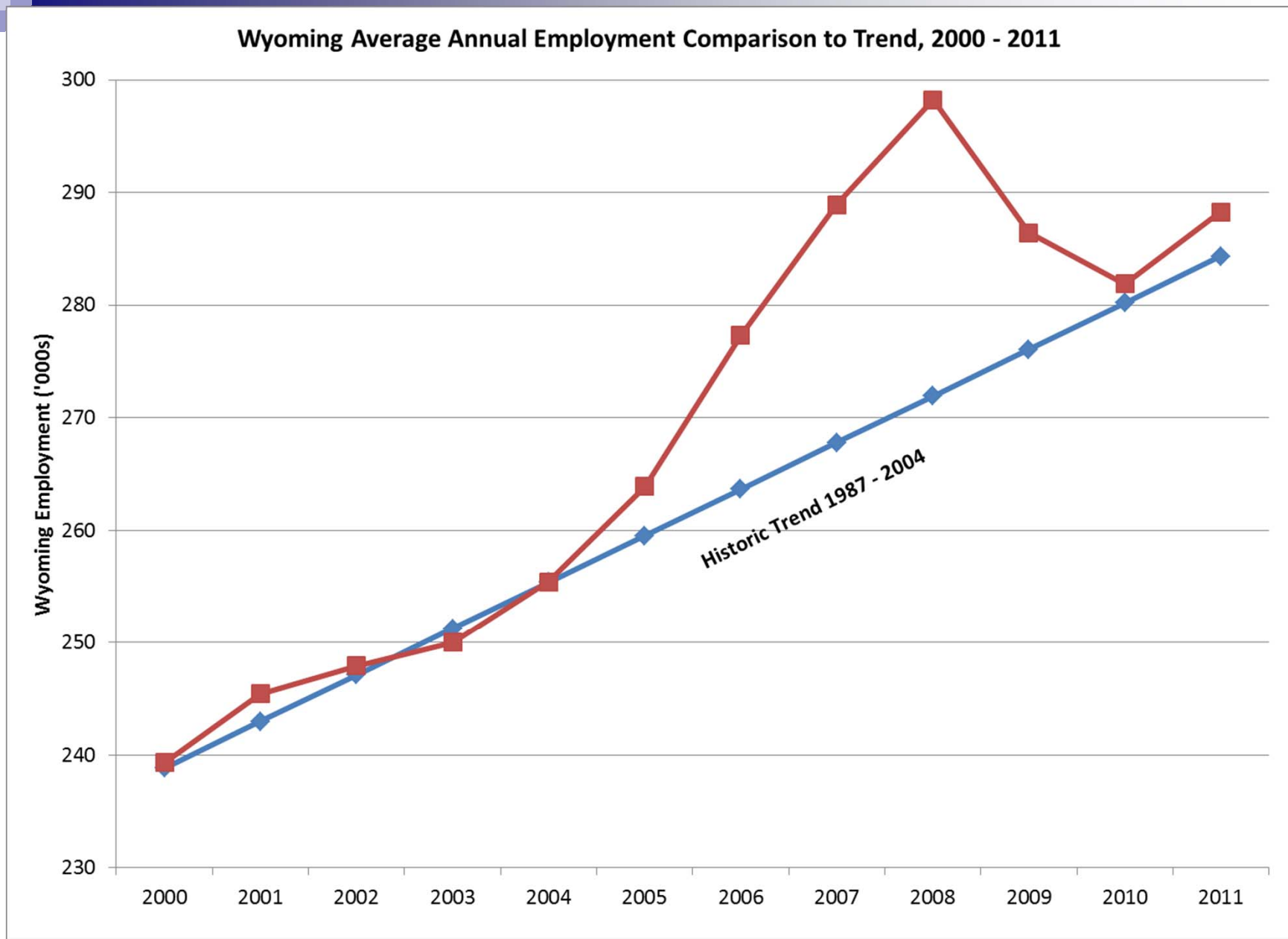


Historic Employment Trends



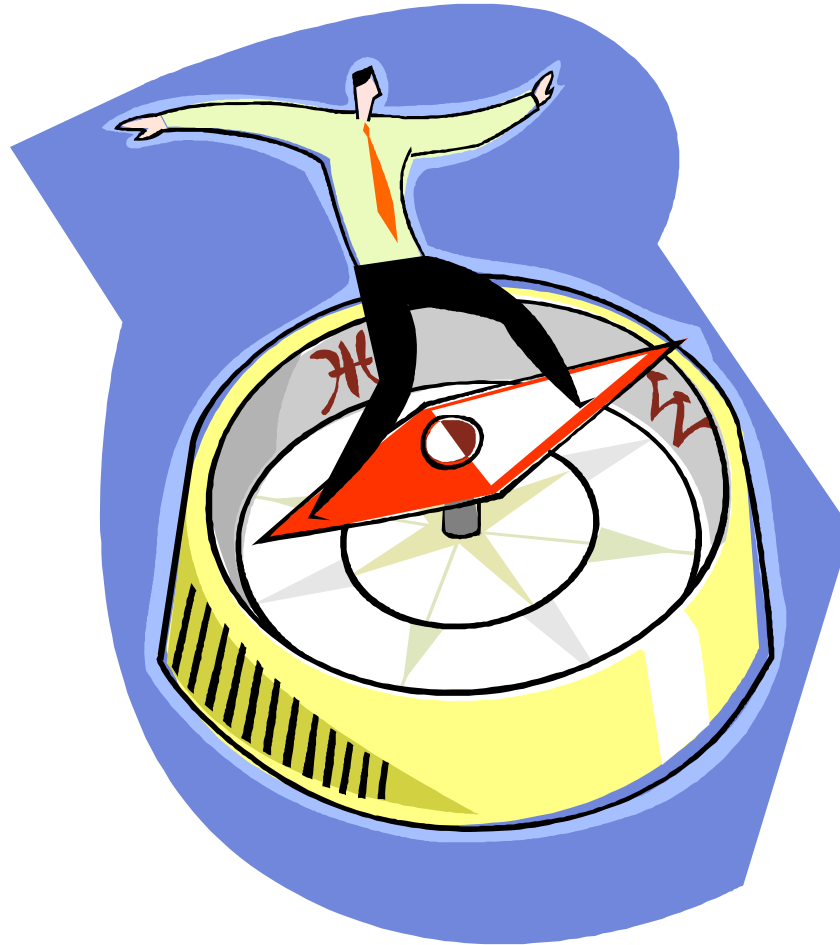


Source: Bureau of Labor Statistics



Source: Bureau of Labor Statistics

Overview of Labor Force Dynamics

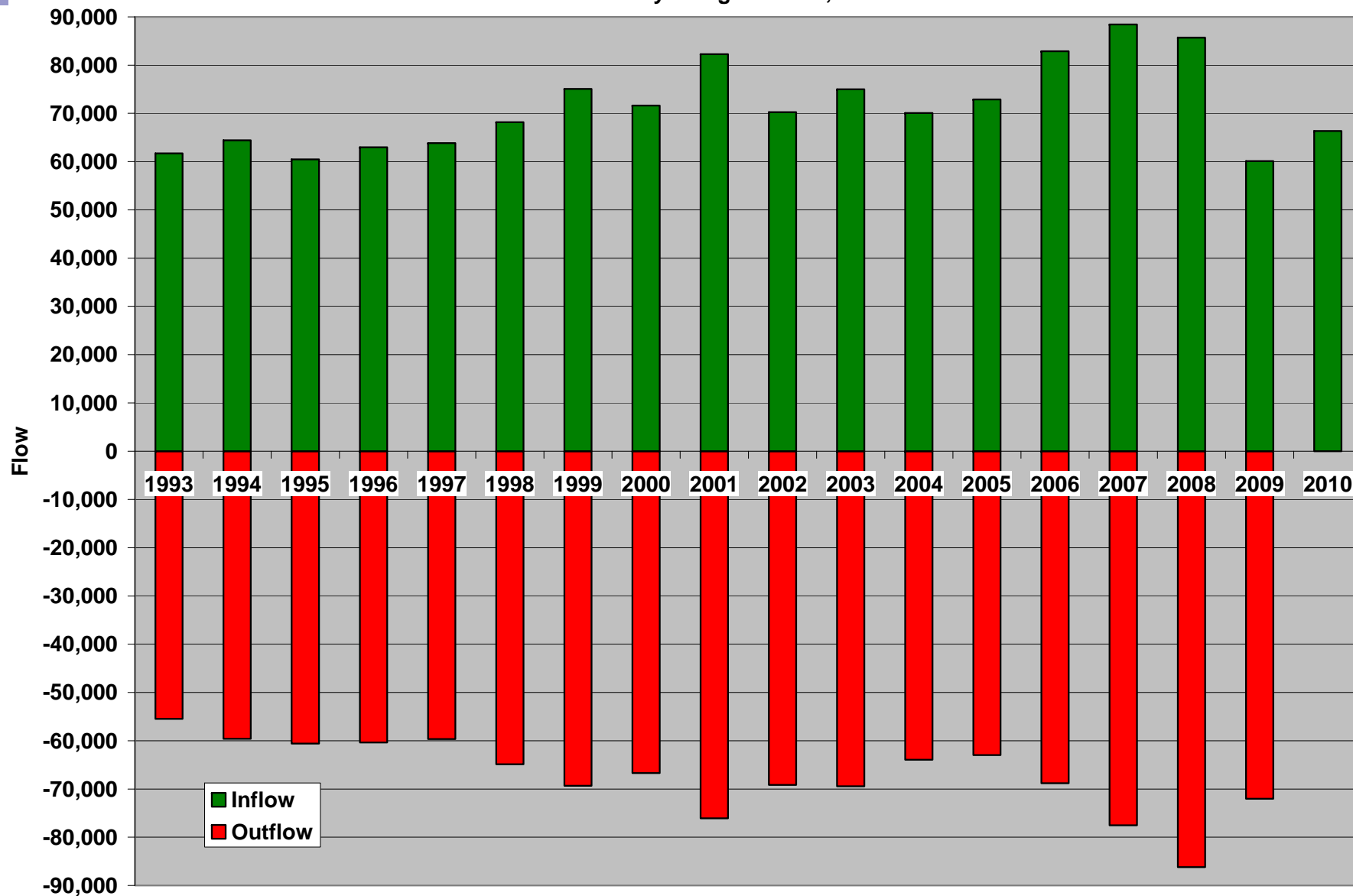




Labor Market Churn

- Although Wyoming employment rose steadily for 17 years (1987 – 2004), a substantial amount of entry and exit occurred
- Wyoming imports labor from other states during expansion and subsequently exports labor during contraction
- **Inflow**: People who worked in Wyoming during the current year who did not work in Wyoming during the prior year
- **Outflow**: People who worked in Wyoming during the current year who did not work in Wyoming during the subsequent year

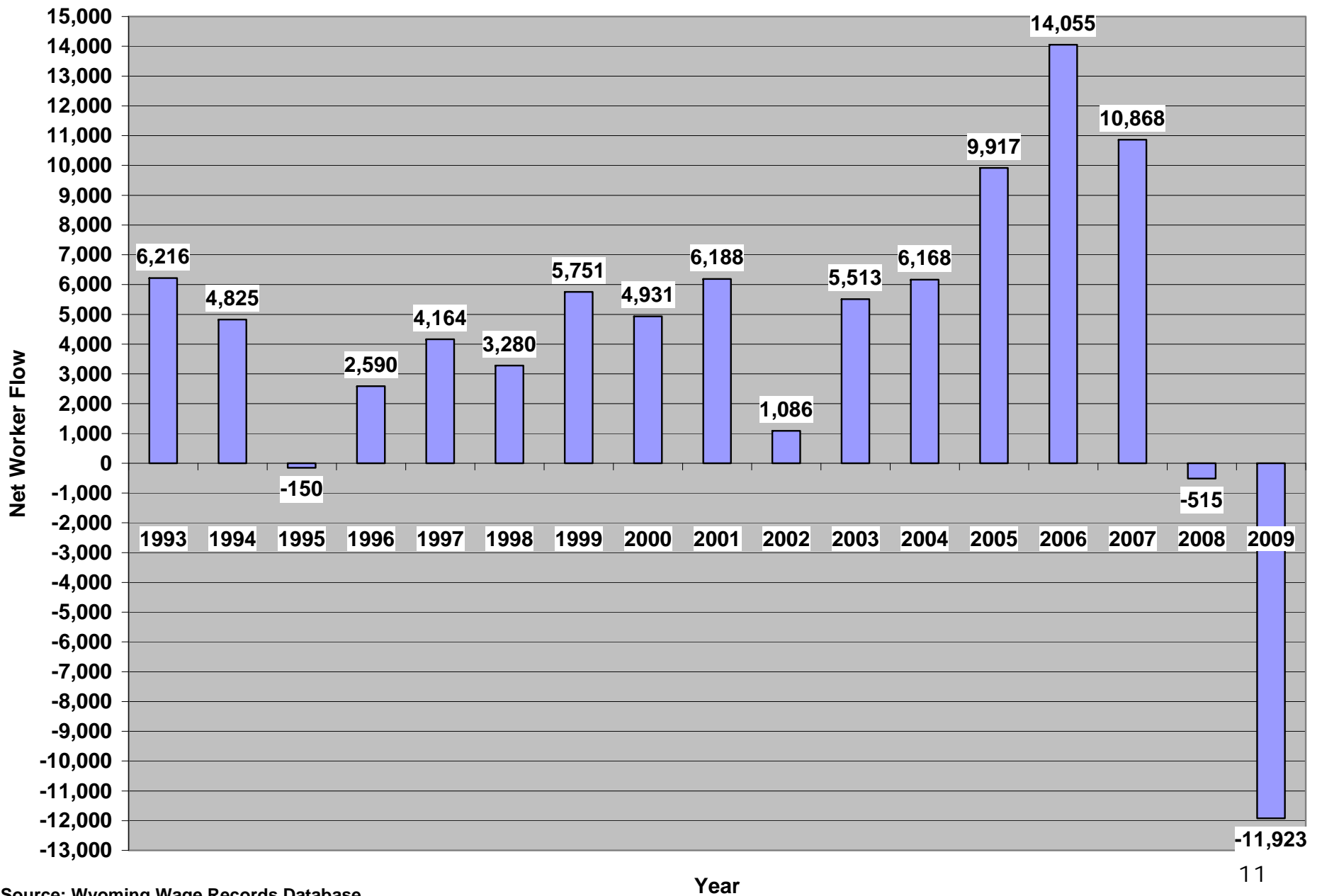
Inflow and Outflow of Wyoming Workers, 1993 - 2010



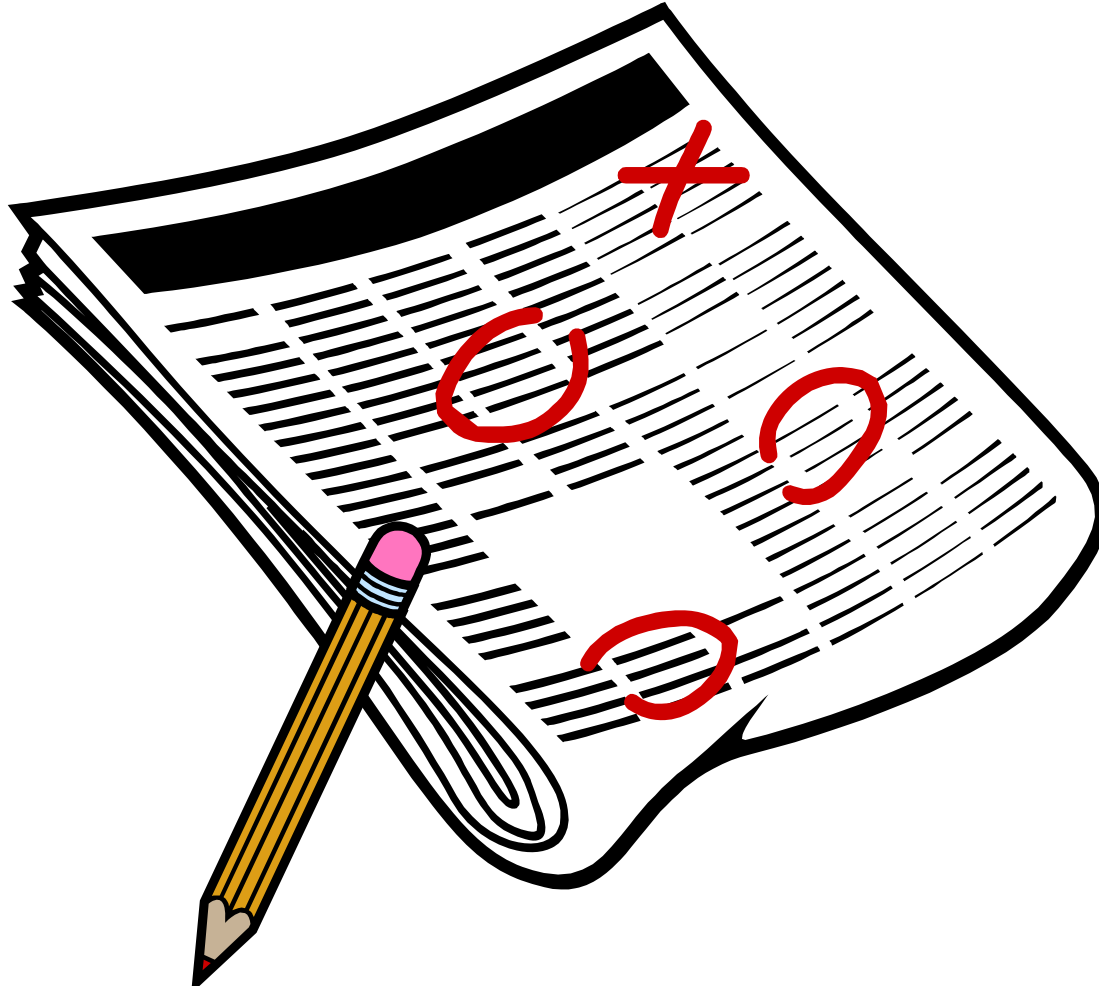
Source: Wyoming Wage Records Database

Year

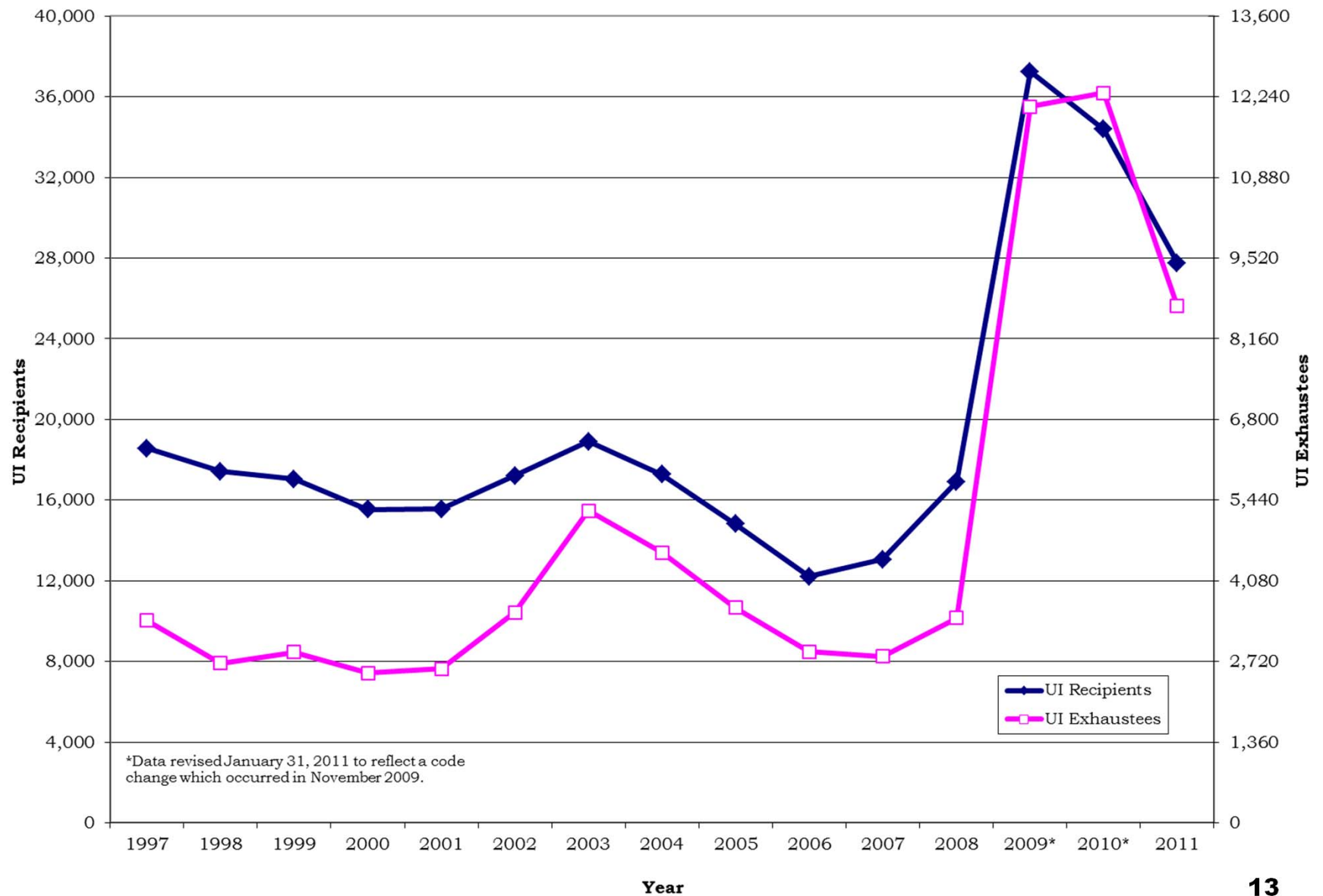
Net Flow of Wyoming Workers, 1993 - 2009



The Unemployed

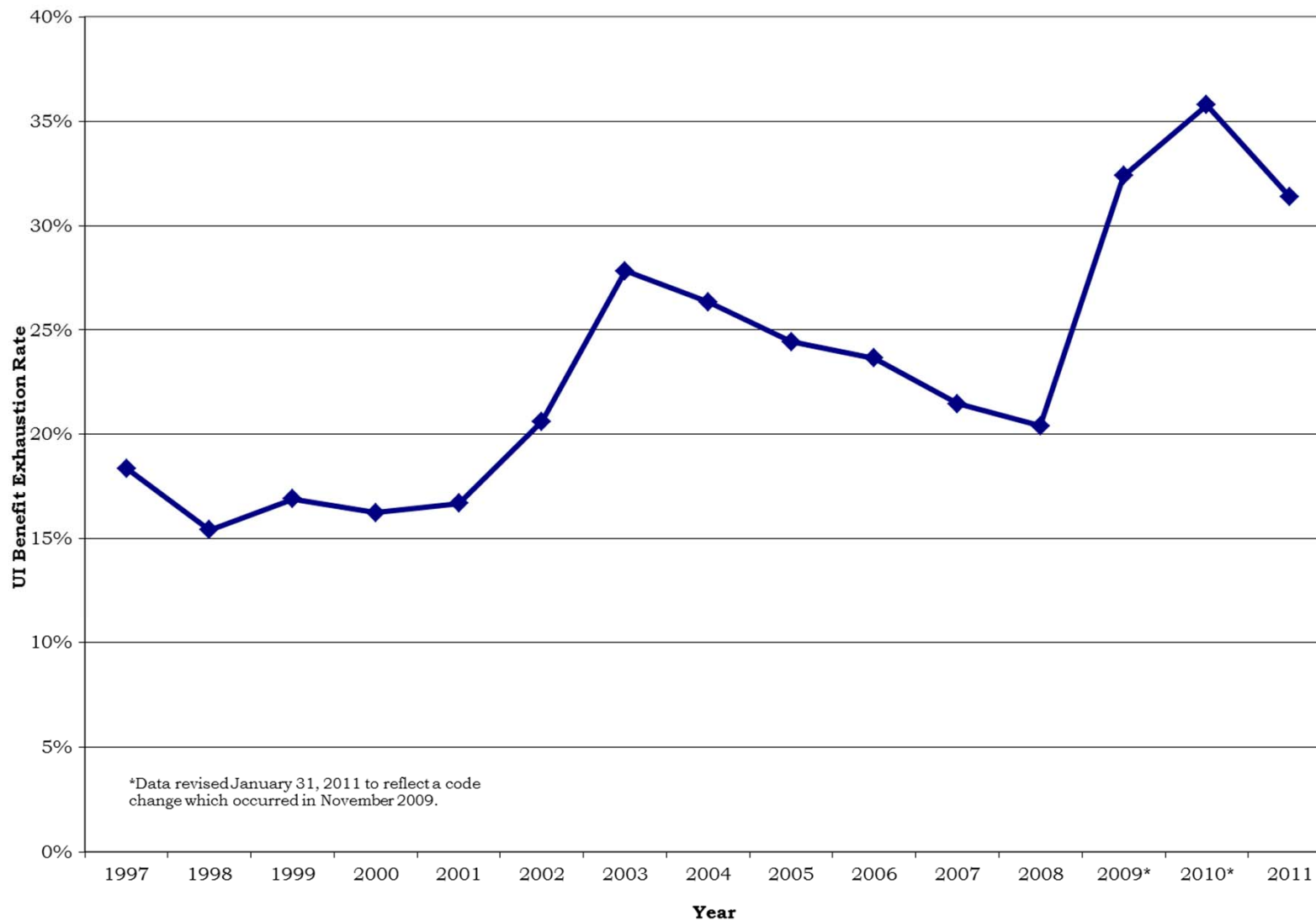


Wyoming Unemployment Insurance Benefit Recipients and Exhaustees 1997 - 2011 - Updated January 9, 2012

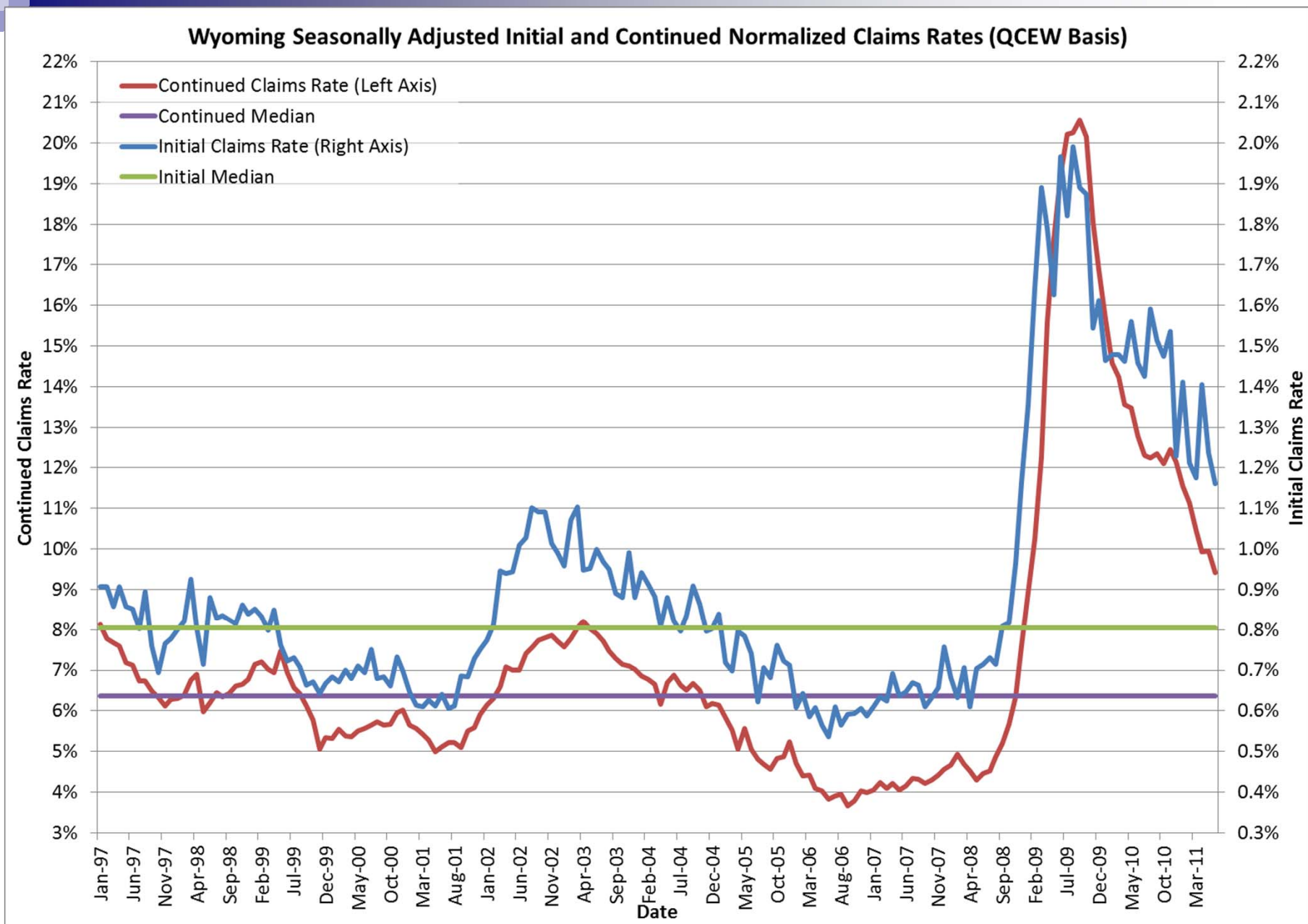


Source: Wyoming Unemployment Insurance Microdata

Wyoming Unemployment Insurance Benefit Exhaustion Rates 1997 - 2011 - Updated January 9, 2012



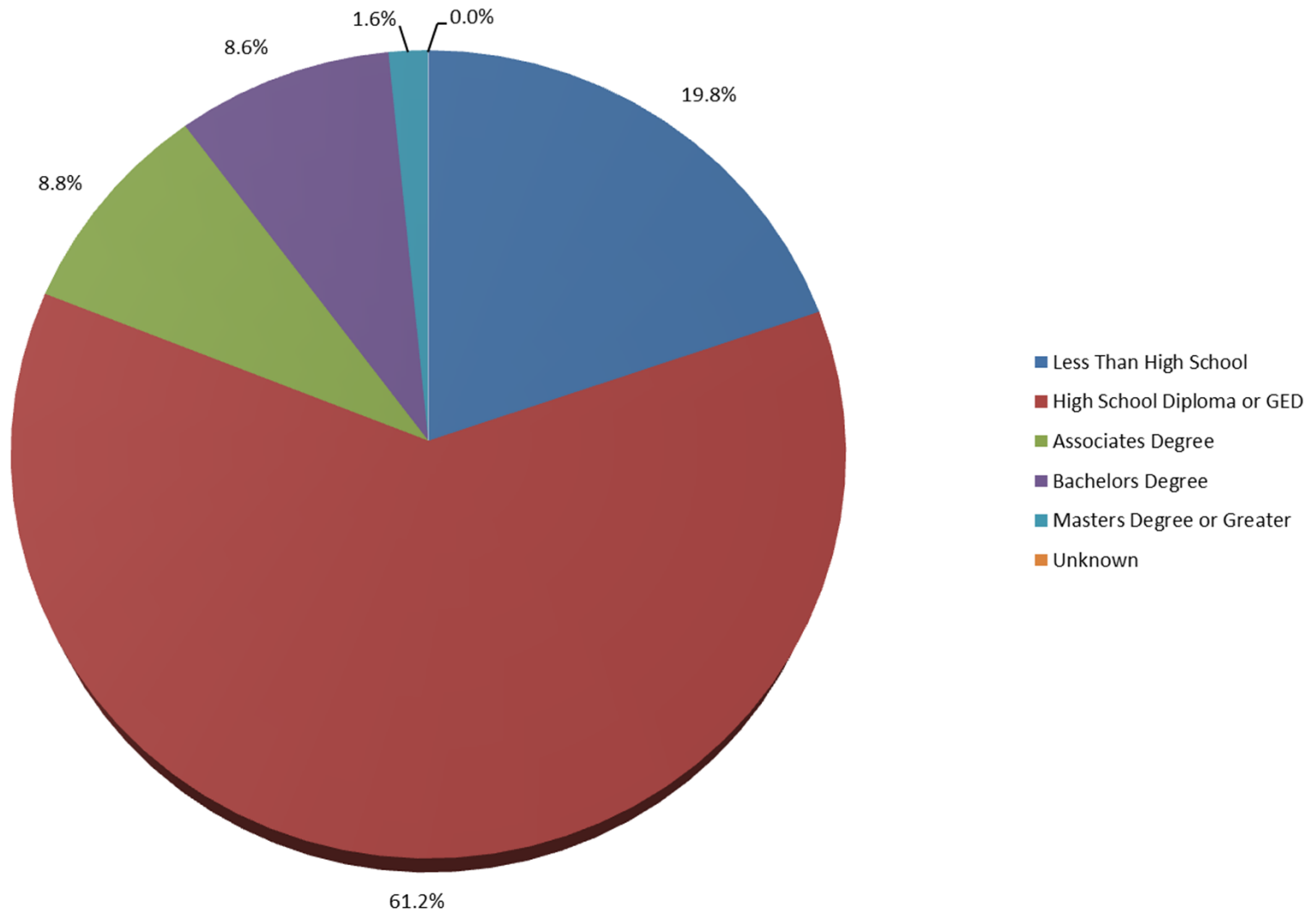
Source: Wyoming Unemployment Insurance Microdata

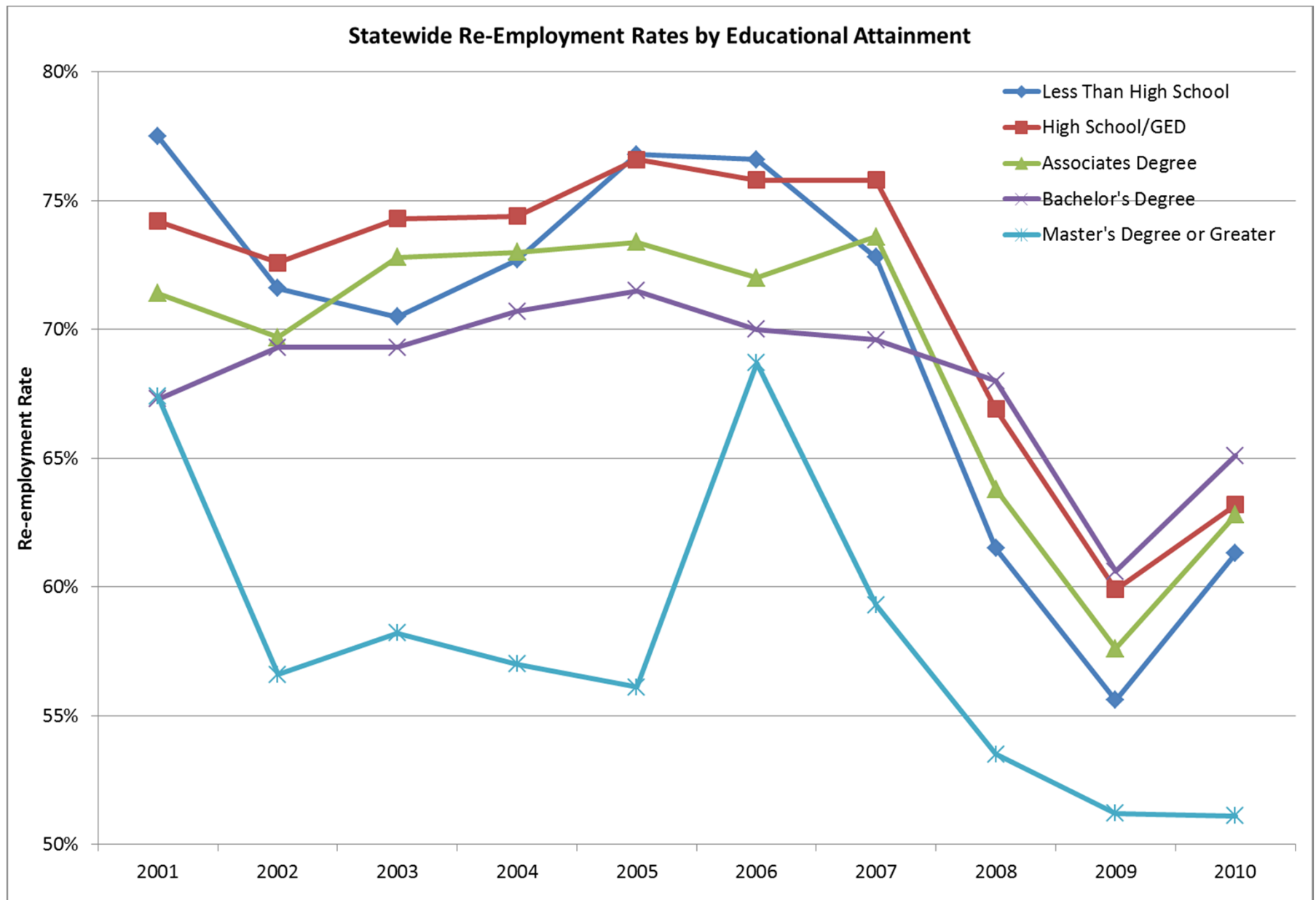


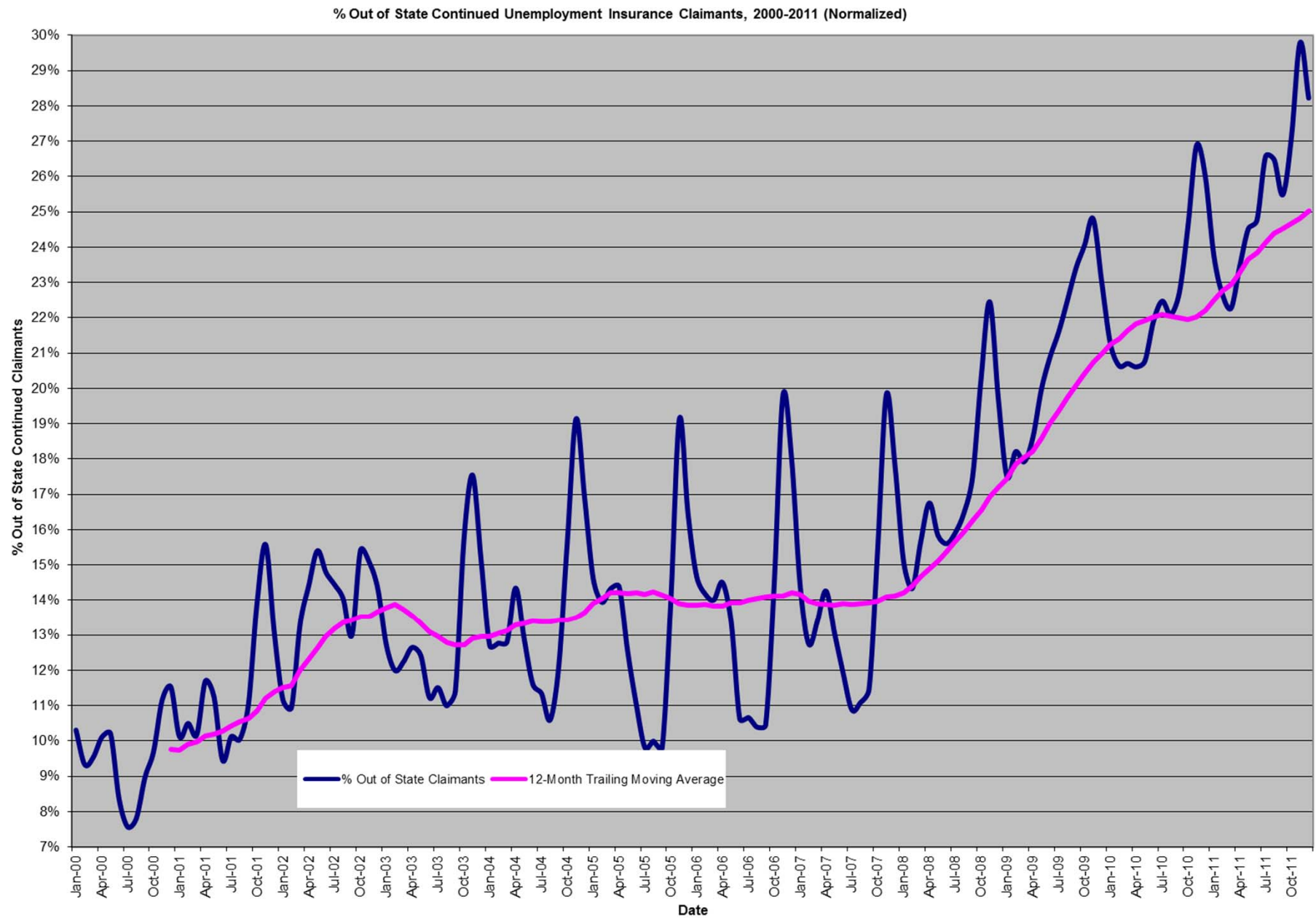


Source: Wyoming Unemployment Insurance Microdata

Distribution of Unemployment Insurance Claimants, 2011







Source: Wyoming Unemployment Insurance Microdata



Nonresident UI Claimants

- Nonresident UI claimants are not included in the calculation of unemployment rates – it's done by place of residence
- For February 2011, if we included the nonresident claimants in the calculation, Wyoming's unemployment rate would have been 7.1% (seasonally adjusted), an increase of 0.9%



New Hires





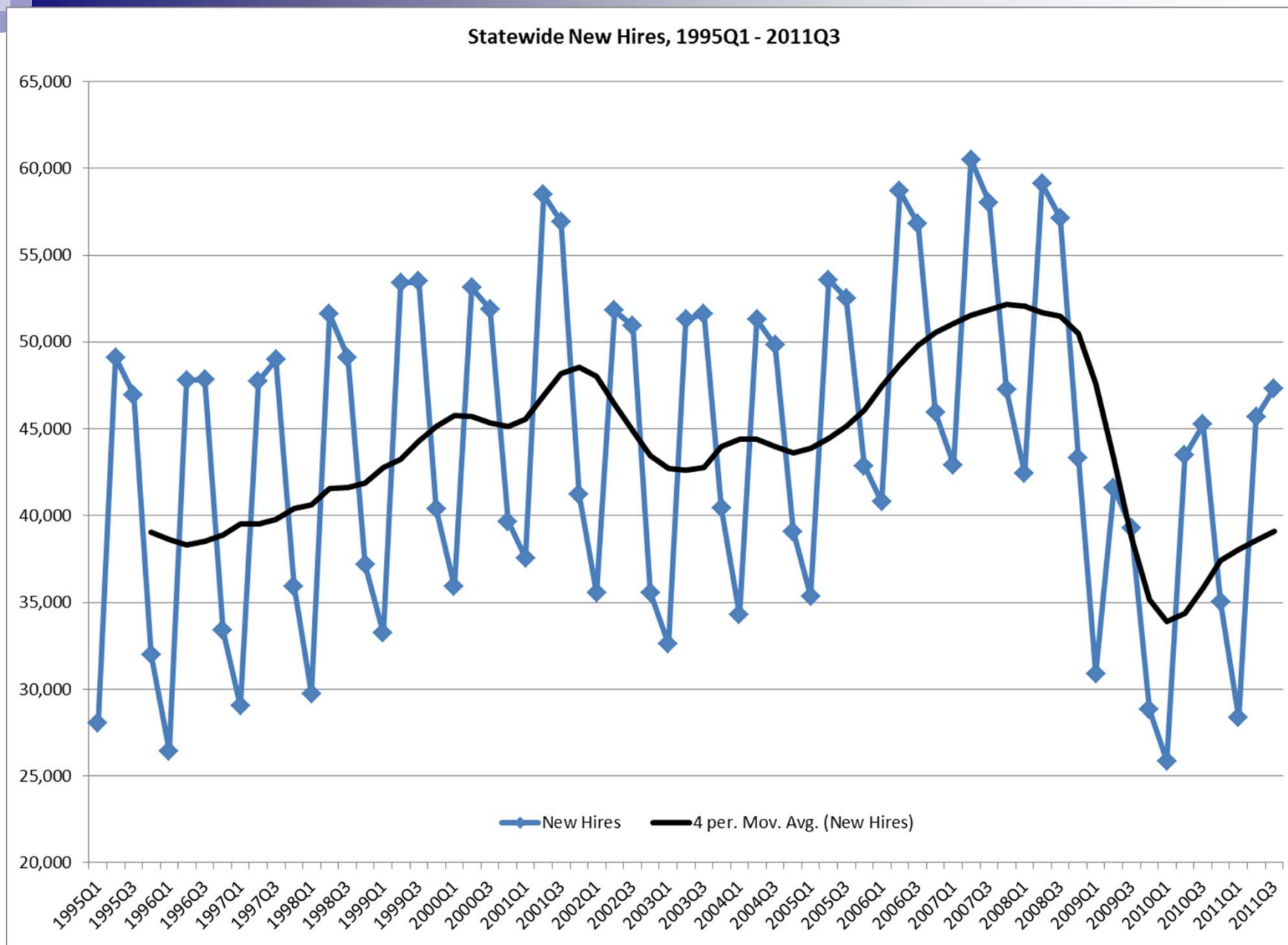
What is a New Hire?

- **New Hire**: A person who worked for ABC Construction Company in fourth quarter 2009 (2009Q4) who had no prior wage history with ABC Construction Company going back to 1992Q1



New Hires: Links to Published Data

- http://doe.state.wy.us/lmi/energy/New_Hires_Wages_4Q.htm
- http://doe.state.wy.us/lmi/energy/New_Hires_Hours_4Q.htm
- http://doe.state.wy.us/lmi/energy/New_Hires_Skills_4Q.htm
- http://doe.state.wy.us/lmi/energy/New_Hires_Turnover_4Q.htm
- http://doe.state.wy.us/lmi/energy/New_Hires_Demographics_4Q.htm



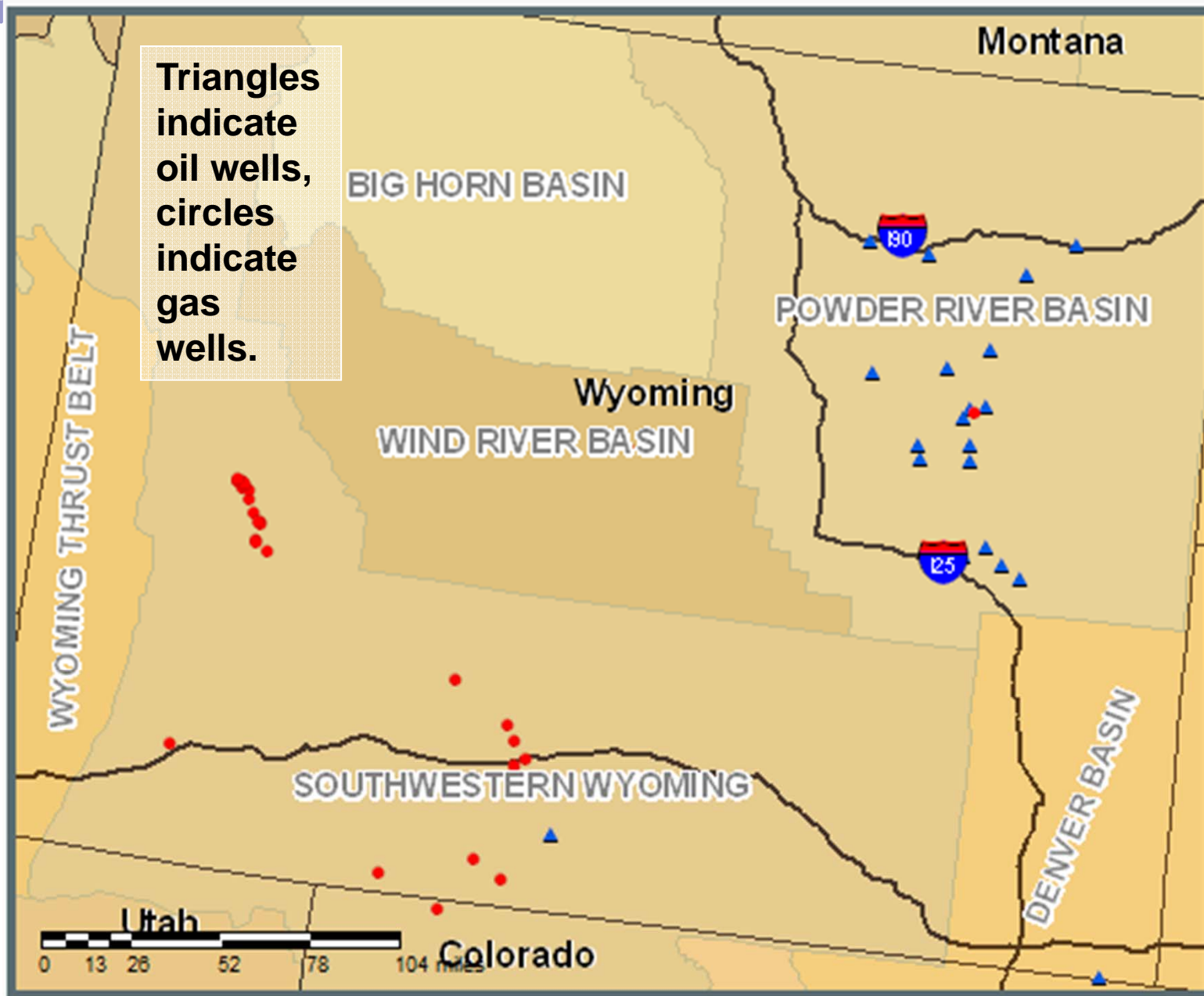
Source: Wyoming Wage Records Database

New Hires, 2009Q4 - 2010Q3

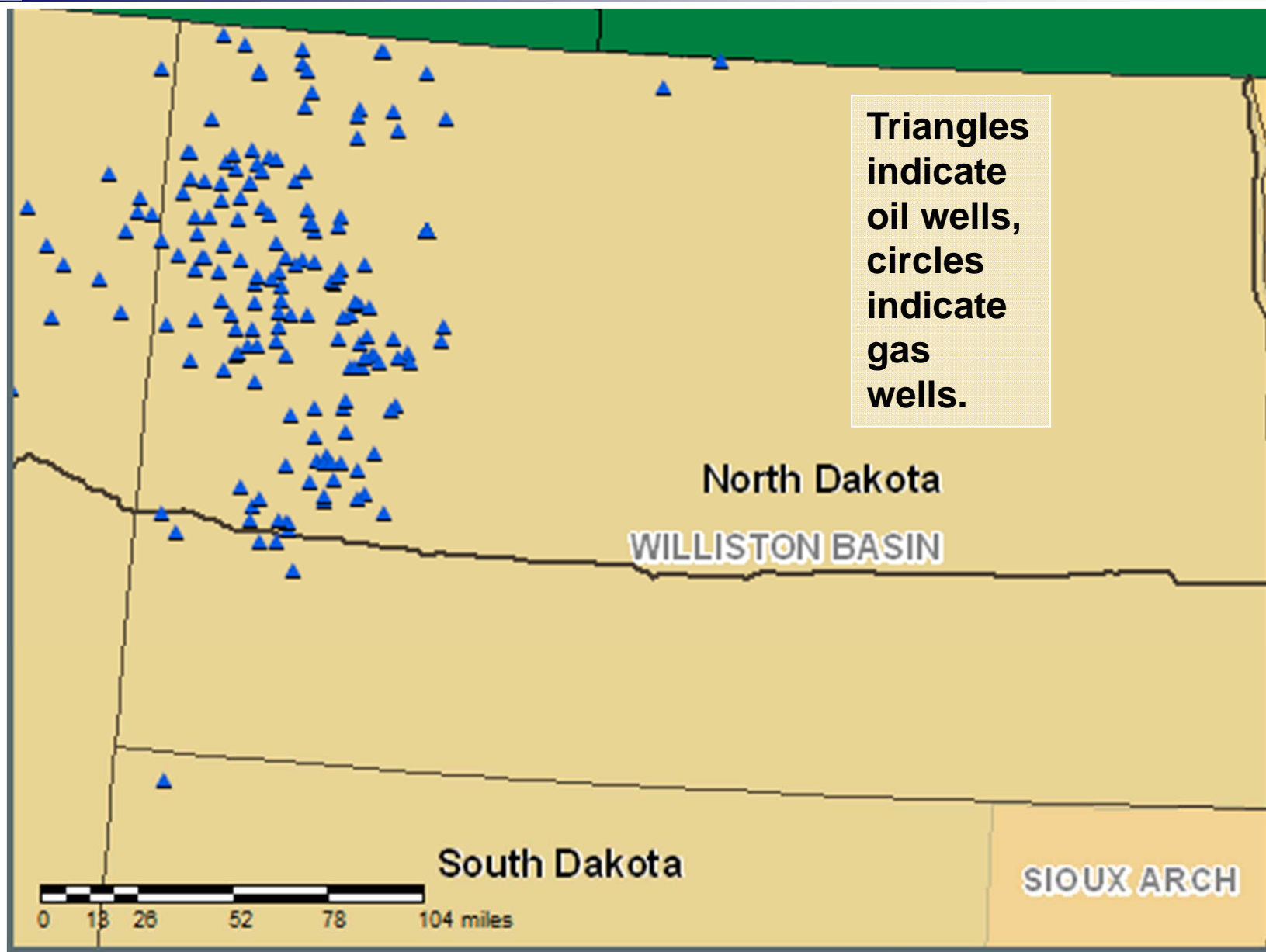
NAICS	Industry	Total New Hires	New Hires Predicted to be Emp. In Next Qtr.
11	Agriculture, Forestry, Fishing, and Hunting	1,467	995
21	Mining, Quarrying, and Oil and Gas	9,549	8,284
22	Utilities	329	320
23	Construction	23,285	14,857
31-33	Manufacturing	3,189	2,568
42	Wholesale Trade	2,972	2,712
44-45	Retail Trade	20,403	15,765
48-49	Transportation and Warehousing	4,337	3,451
51	Information	1,411	1,258
52	Finance and Insurance	1,867	1,751
53	Real Estate and Rental and Leasing	2,050	1,701
54	Professional, Scientific, and Enterprises	4,038	2,969
55	Management of Companies and Enterprises	106	79
56	Administrative and Support and Waste	10,896	6,125
61	Educational Services	7,173	6,436
62	Health Care and Social Assistance	12,262	11,185
71	Arts, Entertainment, and Recreation	2,689	2,046
72	Accommodation and Food Services	33,548	21,922
81	Other Services	4,956	3,750
92	Public Administration	5,086	3,891
Total		151,613	112,065

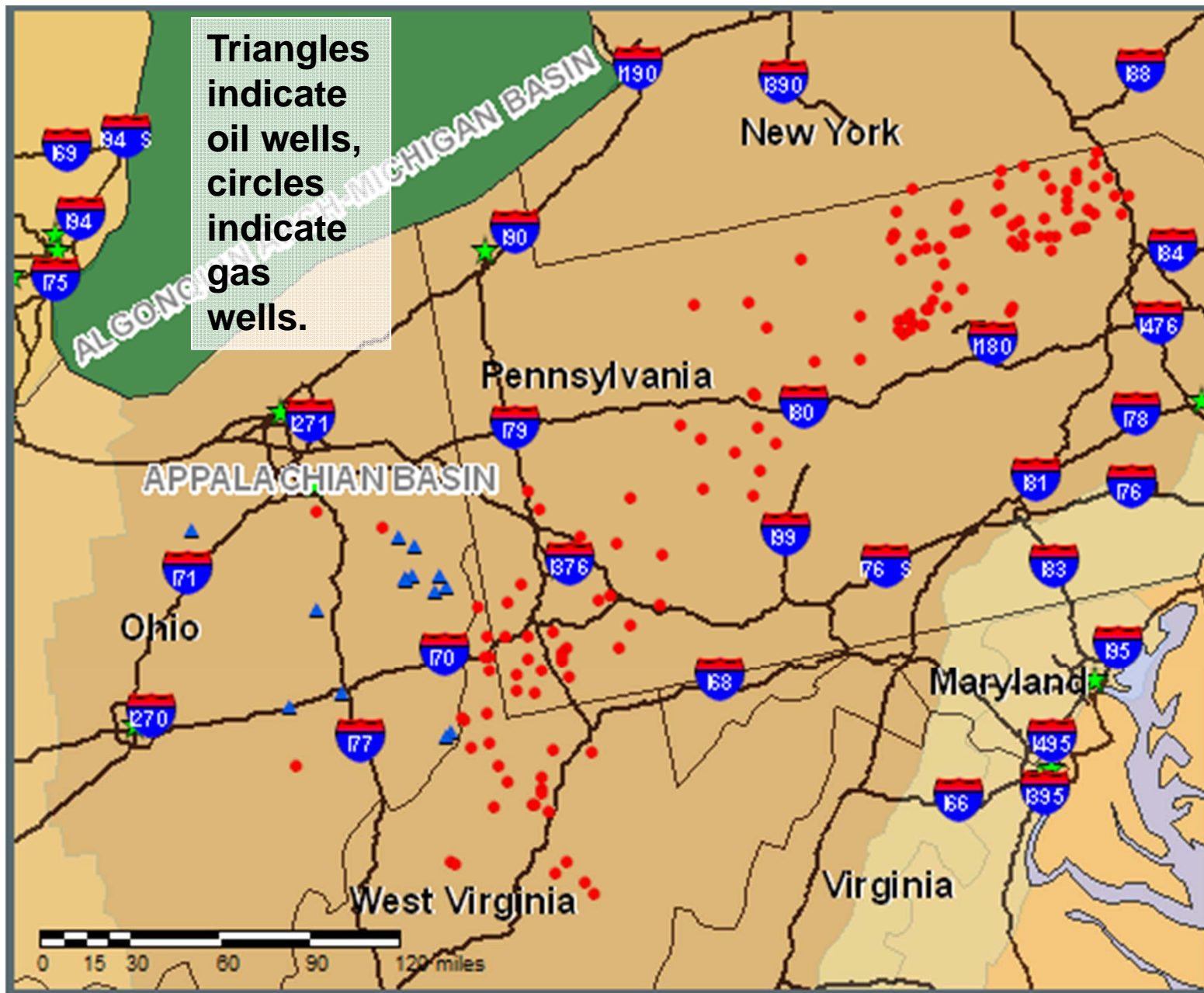
Wyoming has competition





Source: Baker Hughes Investor Relations: 02/03/2012

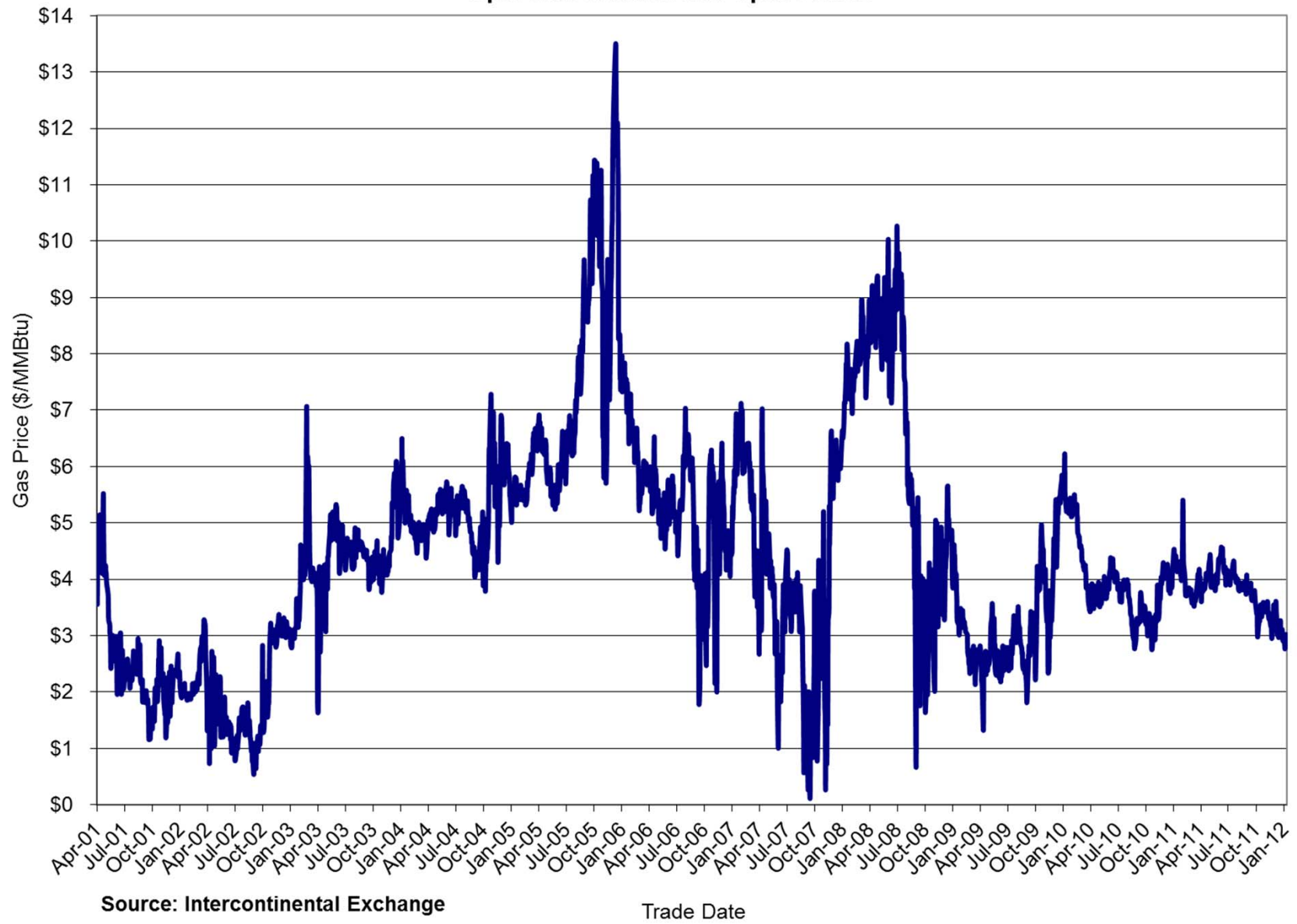




Source: Baker Hughes Investor Relations: 01/24/2012



Opal Hub Natural Gas Spot Prices





To Summarize...

- Wyoming labor market volatility
- Displaced workers less likely to be working in the year following layoff
- Substantial number of UI claimants located out of state
- Number of new hires in 2011Q3 comparable to levels seen in 1995
- Substantial proportion of jobs filled by new hires require little or no postsecondary education
- Reduced demand for natural gas coupled with competition from other states slows job growth and recovery in Wyoming



Research & Planning

- <http://doe.state.wy.us/lmi>
- Telephone: (307) 473 – 3807
- Mailing Address:
PO Box 2760
Casper, WY 82602