

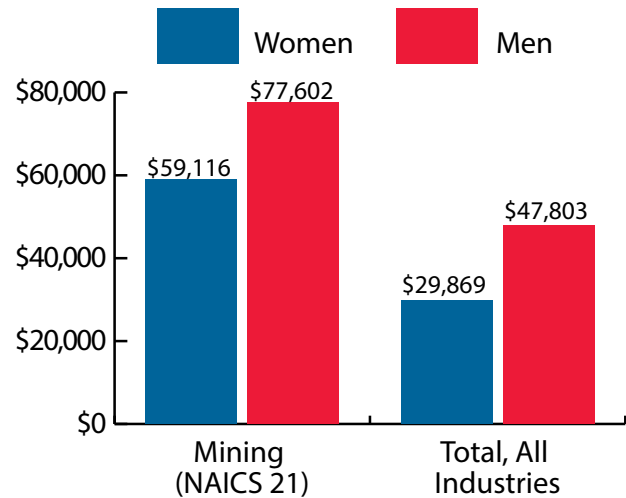
Wyoming Mining, Including Oil & Gas (NAICS 21) at a Glance, 2018

Demographics of Persons Working in Wyoming by County, Industry, Age, & Gender, 2000-2018

Table: Total Number of Persons Working in Mining, Including Oil & Gas (NAICS 21) in Wyoming at Any Time by Gender and Age, 2017-2018

Gender	2017	2018	Change	
			N	%
Women	2,290	2,367	77	3.4
Men	19,984	20,383	399	2.0
Nonresidents	2,226	3,027	801	36.0
Total	24,500	25,777	1,277	5.2

Age	2017	2018	Change	
			N	%
00-19	296	302	6	2.0
20-24	1221	1398	177	14.5
25-34	5753	5840	87	1.5
35-44	5823	6075	252	4.3
45-54	4135	4147	12	0.3
55-64	4247	4171	-76	-1.8
65-Up	786	805	19	2.4
Nonresidents	2239	3039	800	35.7
Total	24,500	25,777	1,277	5.2



Women's Wages as % of Men's Wages

Mining (NAICS 21): 76.2%

Total, All Industries: 62.5%

Figure: Average Annual Wages by Gender, 2018

Total = 25,777

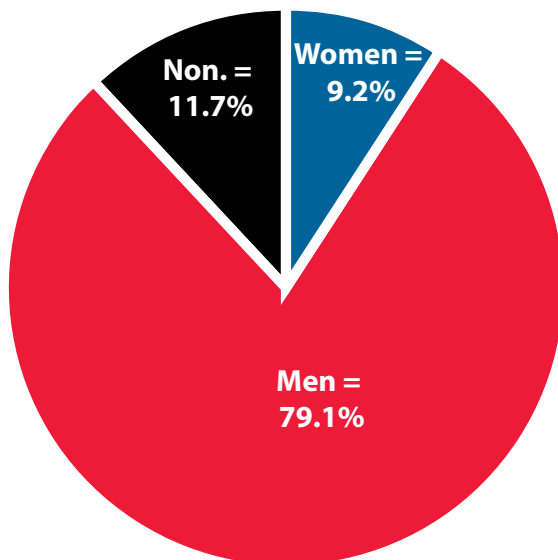


Figure: Persons Working by Gender, 2018

Total = 25,777

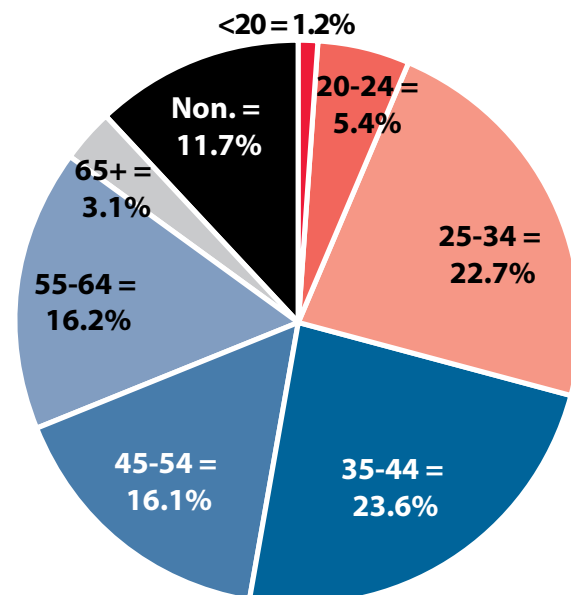


Figure: Persons Working by Age, 2018

Note: Nonresidents are individuals for whom demographic data are not available.

Source: Demographics of Persons Working in Wyoming by County, Industry, Age, & Gender, 2000-2018. Research & Planning, Wyoming Department of Workforce Services. Prepared by M. Moore, Research & Planning, WY DWS, 7/31/19.

Persons Working in Mining, Including Oil & Gas (NAICS 21) in Wyoming by Gender and Age, 2000-2018

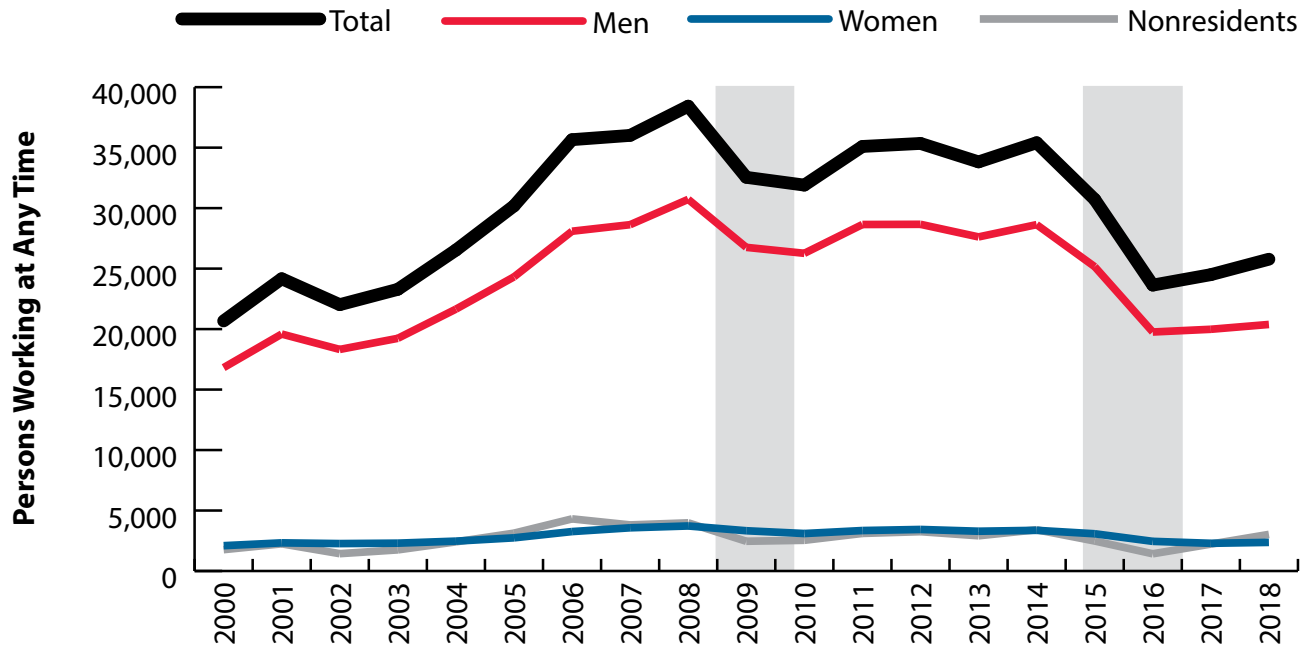


Figure: Persons Working in Mining, Including Oil & Gas (NAICS 21) in Wyoming at Any Time by Gender, 2000-2018

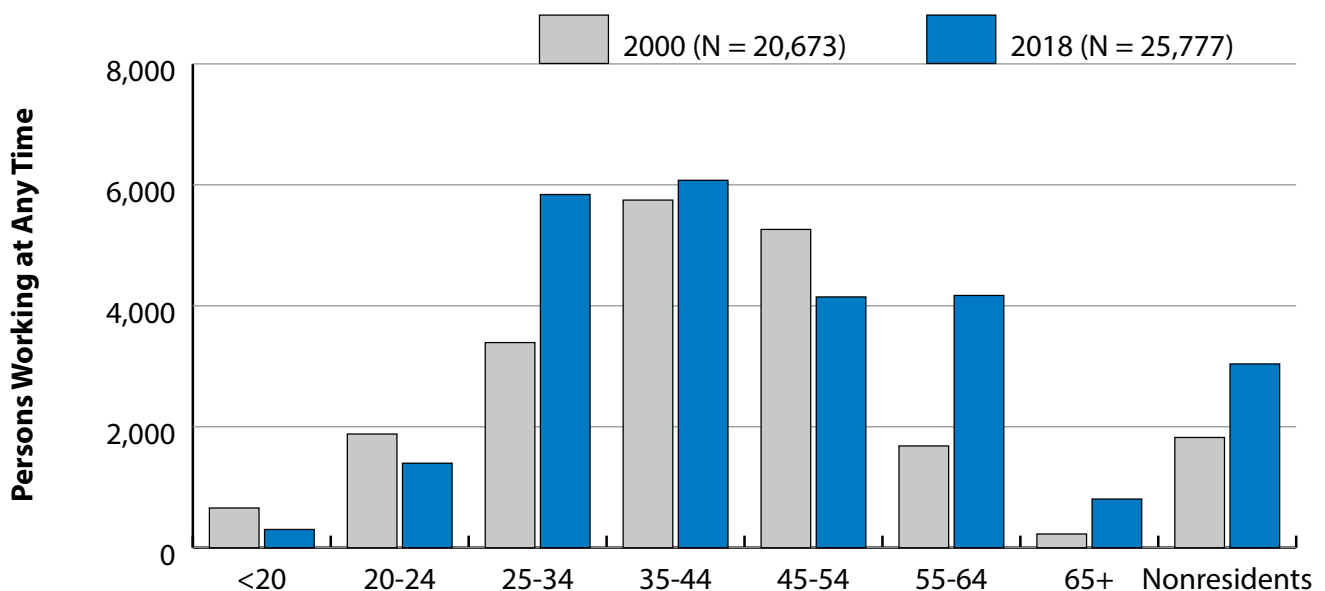


Figure: Persons Working in Mining, Including Oil & Gas (NAICS 21) in Wyoming at Any Time by Age, 2000-2018

Note: Nonresidents are individuals for whom demographic data are not available.
 Shaded areas indicate periods of economic downturn: 2009Q1-2010Q1 and 2015Q2-2016Q4.
 Source: Demographics of Persons Working in Wyoming by County, Industry, Age, & Gender, 2000-2018. Research & Planning, Wyoming Department of Workforce Services. Prepared by M. Moore, Research & Planning, WY DWS, 7/31/19.

Average Earnings by Age and Gender in the 21 - Mining Industry in 2000

Gender	Age Group	Number	Age Percent	Gender Percent	Average Annual Wage	Average Quarters Worked	Average Annual Employers
Women	00-19	105	5.0	0.0	\$5,396	2.6	1.8
Women	20-24	213	10.2	0.0	\$10,828	2.7	1.6
Women	25-34	305	14.6	0.0	\$27,008	3.4	1.4
Women	35-44	672	32.1	0.0	\$35,662	3.6	1.3
Women	45-54	586	28.0	0.0	\$37,739	3.7	1.2
Women	55-64	165	7.9	0.0	\$31,450	3.5	1.2
Women	65-Up	36	1.7	0.0	\$15,968	3.1	1.1
Women	N/A	12	0.6	0.0	\$20,081	3.3	1.7
Women	Total	2,094	100.0	10.1	\$30,179	3.4	1.3
Men	00-19	552	3.3	0.0	\$9,131	2.7	2.1
Men	20-24	1,667	9.9	0.0	\$20,227	3.2	2.1
Men	25-34	3,087	18.4	0.0	\$34,363	3.4	1.7
Men	35-44	5,076	30.2	0.0	\$48,073	3.6	1.4
Men	45-54	4,677	27.8	0.0	\$56,996	3.7	1.2
Men	55-64	1,518	9.0	0.0	\$48,959	3.5	1.1
Men	65-Up	191	1.1	0.0	\$34,383	3.0	1.1
Men	N/A	46	0.3	0.0	\$32,355	2.6	1.2
Men	Total	16,814	100.0	81.3	\$43,880	3.5	1.5
N/A	N/A	1,765	100.0	0.0	\$13,397	1.6	1.1
N/A	Total	1,765	100.0	8.5	\$13,397	1.6	1.1
Total	00-19	657	3.2	0.0	\$8,534	2.7	2.0
Total	20-24	1,880	9.1	0.0	\$19,162	3.1	2.1
Total	25-34	3,392	16.4	0.0	\$33,702	3.4	1.7
Total	35-44	5,748	27.8	0.0	\$46,622	3.6	1.4
Total	45-54	5,263	25.5	0.0	\$54,852	3.7	1.2
Total	55-64	1,683	8.1	0.0	\$47,243	3.5	1.1
Total	65-Up	227	1.1	0.0	\$31,462	3.0	1.1
Total	N/A	1,823	8.8	0.0	\$13,920	1.7	1.1
Total	Total	20,673	100.0	100.0	\$39,890	3.4	1.4

Note: Persons worked any time during the year.

Industry Determination: Based on the industry of employment in which the person made the most money in the year.

N/A: Represents persons with demographic data that are unavailable.

N/A = Nonresidents, individuals for whom demographic data are not available.

Source: Demographics of Persons Working in Wyoming by County, Industry, Age, & Gender, 2000-2018.

Research & Planning, Wyoming Department of Workforce Services.

Prepared by M. Moore, Research & Planning, WY DWS, 7/31/19.

Average Earnings by Age and Gender in the 21 - Mining Industry in 2001

Gender	Age Group	Number	Age Percent	Gender Percent	Average Annual Wage	Average Quarters Worked	Average Annual Employers
Women	00-19	140	6.0	0.0	\$6,428	2.5	1.7
Women	20-24	261	11.2	0.0	\$12,583	2.9	1.8
Women	25-34	366	15.7	0.0	\$25,472	3.3	1.6
Women	35-44	683	29.3	0.0	\$36,604	3.5	1.4
Women	45-54	645	27.7	0.0	\$40,934	3.7	1.2
Women	55-64	170	7.3	0.0	\$33,323	3.5	1.2
Women	65-Up	46	2.0	0.0	\$19,645	2.8	1.1
Women	N/A	17	0.7	0.0	\$12,720	2.5	1.2
Women	Total	2,328	100.0	9.6	\$30,797	3.4	1.4
Men	00-19	717	3.7	0.0	\$10,382	2.8	2.1
Men	20-24	2,283	11.7	0.0	\$22,230	3.1	2.1
Men	25-34	4,109	21.0	0.0	\$35,736	3.3	1.8
Men	35-44	5,292	27.0	0.0	\$48,702	3.5	1.5
Men	45-54	5,250	26.8	0.0	\$59,275	3.7	1.2
Men	55-64	1,647	8.4	0.0	\$52,780	3.6	1.2
Men	65-Up	237	1.2	0.0	\$27,480	3.1	1.1
Men	N/A	54	0.3	0.0	\$32,098	2.6	1.4
Men	Total	19,589	100.0	81.1	\$44,368	3.4	1.5
N/A	N/A	2,247	100.0	0.0	\$13,021	1.6	1.1
N/A	Total	2,247	100.0	9.3	\$13,021	1.6	1.1
Total	00-19	857	3.5	0.0	\$9,736	2.7	2.1
Total	20-24	2,544	10.5	0.0	\$21,240	3.1	2.0
Total	25-34	4,475	18.5	0.0	\$34,897	3.3	1.8
Total	35-44	5,975	24.7	0.0	\$47,319	3.5	1.5
Total	45-54	5,895	24.4	0.0	\$57,268	3.7	1.2
Total	55-64	1,817	7.5	0.0	\$50,960	3.6	1.2
Total	65-Up	283	1.2	0.0	\$26,206	3.0	1.1
Total	N/A	2,318	9.6	0.0	\$13,463	1.6	1.1
Total	Total	24,164	100.0	100.0	\$40,146	3.3	1.5

Note: Persons worked any time during the year.

Industry Determination: Based on the industry of employment in which the person made the most money in the year.

N/A: Represents persons with demographic data that are unavailable.

N/A = Nonresidents, individuals for whom demographic data are not available.

Source: Demographics of Persons Working in Wyoming by County, Industry, Age, & Gender, 2000-2018.

Research & Planning, Wyoming Department of Workforce Services.

Prepared by M. Moore, Research & Planning, WY DWS, 7/31/19.

Average Earnings by Age and Gender in the 21 - Mining Industry in 2002

Gender	Age Group	Number	Age Percent	Gender Percent	Average Annual Wage	Average Quarters Worked	Average Annual Employers
Women	00-19	101	4.5	0.0	\$6,176	2.4	1.6
Women	20-24	242	10.7	0.0	\$13,568	2.8	1.6
Women	25-34	361	15.9	0.0	\$30,537	3.5	1.5
Women	35-44	640	28.2	0.0	\$37,926	3.6	1.4
Women	45-54	675	29.8	0.0	\$43,647	3.7	1.2
Women	55-64	190	8.4	0.0	\$36,843	3.6	1.2
Women	65-Up	49	2.2	0.0	\$15,650	2.6	1.1
Women	N/A	10	0.4	0.0	\$11,764	3.0	1.3
Women	Total	2,268	100.0	10.3	\$33,753	3.5	1.4
Men	00-19	423	2.3	0.0	\$9,828	2.9	2.0
Men	20-24	1,951	10.7	0.0	\$23,616	3.2	1.9
Men	25-34	3,832	20.9	0.0	\$38,523	3.4	1.6
Men	35-44	4,723	25.8	0.0	\$50,361	3.6	1.4
Men	45-54	5,346	29.2	0.0	\$60,711	3.7	1.2
Men	55-64	1,765	9.6	0.0	\$56,623	3.6	1.2
Men	65-Up	230	1.3	0.0	\$34,412	3.2	1.2
Men	N/A	48	0.3	0.0	\$52,458	3.1	1.2
Men	Total	18,318	100.0	83.2	\$47,529	3.5	1.4
N/A	N/A	1,434	100.0	0.0	\$15,211	1.7	1.1
N/A	Total	1,434	100.0	6.5	\$15,211	1.7	1.1
Total	00-19	524	2.4	0.0	\$9,124	2.8	1.9
Total	20-24	2,193	10.0	0.0	\$22,507	3.1	1.9
Total	25-34	4,193	19.0	0.0	\$37,835	3.4	1.6
Total	35-44	5,363	24.4	0.0	\$48,877	3.6	1.4
Total	45-54	6,021	27.3	0.0	\$58,798	3.7	1.2
Total	55-64	1,955	8.9	0.0	\$54,701	3.6	1.2
Total	65-Up	279	1.3	0.0	\$31,117	3.1	1.2
Total	N/A	1,492	6.8	0.0	\$16,386	1.7	1.1
Total	Total	22,020	100.0	100.0	\$44,006	3.4	1.4

Note: Persons worked any time during the year.

Industry Determination: Based on the industry of employment in which the person made the most money in the year.

N/A: Represents persons with demographic data that are unavailable.

N/A = Nonresidents, individuals for whom demographic data are not available.

Source: Demographics of Persons Working in Wyoming by County, Industry, Age, & Gender, 2000-2018.

Research & Planning, Wyoming Department of Workforce Services.

Prepared by M. Moore, Research & Planning, WY DWS, 7/31/19.

Average Earnings by Age and Gender in the 21 - Mining Industry in 2003

Gender	Age Group	Number	Age Percent	Gender Percent	Average Annual Wage	Average Quarters Worked	Average Annual Employers
Women	00-19	94	4.1	0.0	\$6,460	2.3	1.4
Women	20-24	246	10.7	0.0	\$14,468	2.9	1.6
Women	25-34	395	17.2	0.0	\$30,790	3.5	1.4
Women	35-44	564	24.5	0.0	\$37,276	3.7	1.3
Women	45-54	725	31.5	0.0	\$42,942	3.7	1.2
Women	55-64	224	9.7	0.0	\$38,049	3.6	1.1
Women	65-Up	42	1.8	0.0	\$19,230	2.9	1.1
Women	N/A	13	0.6	0.0	\$13,017	2.8	1.2
Women	Total	2,303	100.0	9.9	\$33,862	3.5	1.3
Men	00-19	488	2.5	0.0	\$10,199	2.7	2.0
Men	20-24	2,115	11.0	0.0	\$24,159	3.1	1.9
Men	25-34	4,193	21.8	0.0	\$39,348	3.4	1.6
Men	35-44	4,604	23.9	0.0	\$49,772	3.6	1.4
Men	45-54	5,565	28.9	0.0	\$60,376	3.7	1.2
Men	55-64	1,970	10.2	0.0	\$57,296	3.7	1.1
Men	65-Up	255	1.3	0.0	\$37,397	3.2	1.1
Men	N/A	46	0.2	0.0	\$38,519	2.7	1.3
Men	Total	19,236	100.0	82.6	\$47,327	3.5	1.4
N/A	N/A	1,747	100.0	0.0	\$15,682	1.7	1.1
N/A	Total	1,747	100.0	7.5	\$15,682	1.7	1.1
Total	00-19	582	2.5	0.0	\$9,595	2.6	1.9
Total	20-24	2,361	10.1	0.0	\$23,150	3.1	1.8
Total	25-34	4,588	19.7	0.0	\$38,611	3.4	1.6
Total	35-44	5,168	22.2	0.0	\$48,408	3.6	1.3
Total	45-54	6,290	27.0	0.0	\$58,367	3.7	1.2
Total	55-64	2,194	9.4	0.0	\$55,331	3.7	1.1
Total	65-Up	297	1.3	0.0	\$34,828	3.2	1.1
Total	N/A	1,806	7.8	0.0	\$16,244	1.7	1.1
Total	Total	23,286	100.0	100.0	\$43,621	3.4	1.4

Note: Persons worked any time during the year.

Industry Determination: Based on the industry of employment in which the person made the most money in the year.

N/A: Represents persons with demographic data that are unavailable.

N/A = Nonresidents, individuals for whom demographic data are not available.

Source: Demographics of Persons Working in Wyoming by County, Industry, Age, & Gender, 2000-2018.

Research & Planning, Wyoming Department of Workforce Services.

Prepared by M. Moore, Research & Planning, WY DWS, 7/31/19.

Average Earnings by Age and Gender in the 21 - Mining Industry in 2004

Gender	Age Group	Number	Age Percent	Gender Percent	Average Annual Wage	Average Quarters Worked	Average Annual Employers
Women	00-19	106	4.3	0.0	\$6,506	2.7	1.8
Women	20-24	262	10.6	0.0	\$14,730	2.9	1.7
Women	25-34	439	17.8	0.0	\$31,336	3.4	1.4
Women	35-44	572	23.2	0.0	\$37,626	3.7	1.4
Women	45-54	785	31.8	0.0	\$45,351	3.8	1.3
Women	55-64	251	10.2	0.0	\$40,440	3.7	1.2
Women	65-Up	46	1.9	0.0	\$21,753	2.9	1.2
Women	N/A	9	0.4	0.0	\$13,077	2.9	1.2
Women	Total	2,470	100.0	9.3	\$35,100	3.5	1.4
Men	00-19	592	2.7	0.0	\$10,812	2.6	2.1
Men	20-24	2,561	11.8	0.0	\$25,905	3.1	2.0
Men	25-34	4,984	23.0	0.0	\$40,944	3.4	1.6
Men	35-44	4,828	22.3	0.0	\$50,037	3.5	1.5
Men	45-54	6,006	27.7	0.0	\$62,503	3.7	1.3
Men	55-64	2,292	10.6	0.0	\$62,849	3.7	1.2
Men	65-Up	331	1.5	0.0	\$35,315	3.2	1.2
Men	N/A	55	0.3	0.0	\$44,360	2.9	1.5
Men	Total	21,649	100.0	81.6	\$48,591	3.5	1.5
N/A	N/A	2,411	100.0	0.0	\$16,549	1.8	1.1
N/A	Total	2,411	100.0	9.1	\$16,549	1.8	1.1
Total	00-19	698	2.6	0.0	\$10,158	2.6	2.0
Total	20-24	2,823	10.6	0.0	\$24,867	3.1	1.9
Total	25-34	5,423	20.4	0.0	\$40,166	3.4	1.6
Total	35-44	5,400	20.4	0.0	\$48,722	3.5	1.5
Total	45-54	6,791	25.6	0.0	\$60,520	3.7	1.3
Total	55-64	2,543	9.6	0.0	\$60,637	3.7	1.2
Total	65-Up	377	1.4	0.0	\$33,660	3.1	1.2
Total	N/A	2,475	9.3	0.0	\$17,154	1.8	1.1
Total	Total	26,530	100.0	100.0	\$44,423	3.3	1.5

Note: Persons worked any time during the year.

Industry Determination: Based on the industry of employment in which the person made the most money in the year.

N/A: Represents persons with demographic data that are unavailable.

N/A = Nonresidents, individuals for whom demographic data are not available.

Source: Demographics of Persons Working in Wyoming by County, Industry, Age, & Gender, 2000-2018.

Research & Planning, Wyoming Department of Workforce Services.

Prepared by M. Moore, Research & Planning, WY DWS, 7/31/19.

Average Earnings by Age and Gender in the 21 - Mining Industry in 2005

Gender	Age Group	Number	Age Percent	Gender Percent	Average Annual Wage	Average Quarters Worked	Average Annual Employers
Women	00-19	96	3.5	0.0	\$6,577	2.7	1.7
Women	20-24	286	10.4	0.0	\$17,557	3.1	1.8
Women	25-34	530	19.3	0.0	\$30,165	3.4	1.6
Women	35-44	615	22.4	0.0	\$37,003	3.6	1.4
Women	45-54	865	31.5	0.0	\$45,992	3.7	1.3
Women	55-64	300	10.9	0.0	\$45,005	3.6	1.2
Women	65-Up	43	1.6	0.0	\$19,553	3.0	1.2
Women	N/A	7	0.3	0.0	\$4,398	2.6	1.0
Women	Total	2,742	100.0	9.1	\$35,942	3.5	1.4
Men	00-19	672	2.8	0.0	\$13,485	2.7	2.2
Men	20-24	3,094	12.7	0.0	\$29,118	3.1	1.9
Men	25-34	6,006	24.7	0.0	\$43,312	3.3	1.6
Men	35-44	5,090	20.9	0.0	\$51,706	3.5	1.5
Men	45-54	6,499	26.7	0.0	\$65,225	3.6	1.3
Men	55-64	2,558	10.5	0.0	\$65,523	3.6	1.2
Men	65-Up	338	1.4	0.0	\$38,629	3.3	1.2
Men	N/A	59	0.2	0.0	\$53,379	3.0	1.3
Men	Total	24,316	100.0	80.6	\$50,591	3.4	1.5
N/A	N/A	3,129	100.0	0.0	\$20,327	1.9	1.1
N/A	Total	3,129	100.0	10.4	\$20,327	1.9	1.1
Total	00-19	768	2.5	0.0	\$12,622	2.7	2.1
Total	20-24	3,380	11.2	0.0	\$28,139	3.1	1.9
Total	25-34	6,536	21.7	0.0	\$42,246	3.3	1.6
Total	35-44	5,705	18.9	0.0	\$50,121	3.5	1.5
Total	45-54	7,364	24.4	0.0	\$62,966	3.6	1.3
Total	55-64	2,858	9.5	0.0	\$63,369	3.6	1.2
Total	65-Up	381	1.3	0.0	\$36,476	3.2	1.2
Total	N/A	3,195	10.6	0.0	\$20,902	2.0	1.1
Total	Total	30,187	100.0	100.0	\$46,124	3.3	1.4

Note: Persons worked any time during the year.

Industry Determination: Based on the industry of employment in which the person made the most money in the year.

N/A: Represents persons with demographic data that are unavailable.

N/A = Nonresidents, individuals for whom demographic data are not available.

Source: Demographics of Persons Working in Wyoming by County, Industry, Age, & Gender, 2000-2018.

Research & Planning, Wyoming Department of Workforce Services.

Prepared by M. Moore, Research & Planning, WY DWS, 7/31/19.

Average Earnings by Age and Gender in the 21 - Mining Industry in 2006

Gender	Age Group	Number	Age Percent	Gender Percent	Average Annual Wage	Average Quarters Worked	Average Annual Employers
Women	00-19	115	3.5	0.0	\$8,278	2.7	1.8
Women	20-24	390	12.0	0.0	\$21,252	3.2	1.9
Women	25-34	650	19.9	0.0	\$35,092	3.5	1.6
Women	35-44	724	22.2	0.0	\$39,772	3.6	1.5
Women	45-54	986	30.2	0.0	\$49,552	3.7	1.3
Women	55-64	339	10.4	0.0	\$47,785	3.6	1.3
Women	65-Up	51	1.6	0.0	\$26,591	3.2	1.2
Women	N/A	5	0.2	0.0	\$8,664	3.2	1.0
Women	Total	3,260	100.0	9.1	\$39,050	3.5	1.5
Men	00-19	775	2.8	0.0	\$15,766	2.8	2.1
Men	20-24	3,843	13.7	0.0	\$33,949	3.1	1.9
Men	25-34	7,426	26.4	0.0	\$48,514	3.3	1.6
Men	35-44	5,720	20.4	0.0	\$57,466	3.4	1.4
Men	45-54	6,953	24.8	0.0	\$70,422	3.6	1.3
Men	55-64	2,928	10.4	0.0	\$72,804	3.7	1.2
Men	65-Up	386	1.4	0.0	\$45,617	3.2	1.1
Men	N/A	60	0.2	0.0	\$48,946	2.8	1.4
Men	Total	28,091	100.0	78.8	\$55,356	3.4	1.5
N/A	N/A	4,309	100.0	0.0	\$22,733	2.0	1.1
N/A	Total	4,309	100.0	12.1	\$22,733	2.0	1.1
Total	00-19	890	2.5	0.0	\$14,798	2.8	2.0
Total	20-24	4,233	11.9	0.0	\$32,779	3.1	1.9
Total	25-34	8,076	22.6	0.0	\$47,433	3.3	1.6
Total	35-44	6,444	18.1	0.0	\$55,478	3.5	1.4
Total	45-54	7,939	22.3	0.0	\$67,830	3.6	1.3
Total	55-64	3,267	9.2	0.0	\$70,208	3.7	1.2
Total	65-Up	437	1.2	0.0	\$43,396	3.2	1.1
Total	N/A	4,374	12.3	0.0	\$23,076	2.0	1.1
Total	Total	35,660	100.0	100.0	\$49,924	3.3	1.4

Note: Persons worked any time during the year.

Industry Determination: Based on the industry of employment in which the person made the most money in the year.

N/A: Represents persons with demographic data that are unavailable.

N/A = Nonresidents, individuals for whom demographic data are not available.

Source: Demographics of Persons Working in Wyoming by County, Industry, Age, & Gender, 2000-2018.

Research & Planning, Wyoming Department of Workforce Services.

Prepared by M. Moore, Research & Planning, WY DWS, 7/31/19.

Average Earnings by Age and Gender in the 21 - Mining Industry in 2007

Gender	Age Group	Number	Age Percent	Gender Percent	Average Annual Wage	Average Quarters Worked	Average Annual Employers
Women	00-19	101	2.8	0.0	\$8,021	2.8	1.9
Women	20-24	431	12.1	0.0	\$22,950	3.2	1.7
Women	25-34	756	21.2	0.0	\$38,876	3.5	1.5
Women	35-44	788	22.1	0.0	\$42,723	3.6	1.5
Women	45-54	1,032	28.9	0.0	\$50,919	3.7	1.3
Women	55-64	396	11.1	0.0	\$50,201	3.7	1.2
Women	65-Up	61	1.7	0.0	\$27,529	3.1	1.1
Women	N/A	6	0.2	0.0	\$21,897	3.7	1.0
Women	Total	3,571	100.0	9.9	\$41,444	3.5	1.4
Men	00-19	610	2.1	0.0	\$16,838	2.8	1.9
Men	20-24	3,736	13.0	0.0	\$37,317	3.2	1.7
Men	25-34	7,852	27.4	0.0	\$53,667	3.4	1.5
Men	35-44	5,788	20.2	0.0	\$61,013	3.5	1.4
Men	45-54	6,938	24.2	0.0	\$73,788	3.6	1.2
Men	55-64	3,217	11.2	0.0	\$76,502	3.7	1.2
Men	65-Up	433	1.5	0.0	\$47,025	3.3	1.2
Men	N/A	57	0.2	0.0	\$46,967	2.8	1.2
Men	Total	28,631	100.0	79.5	\$59,562	3.5	1.4
N/A	N/A	3,810	100.0	0.0	\$29,394	2.2	1.1
N/A	Total	3,810	100.0	10.6	\$29,394	2.2	1.1
Total	00-19	711	2.0	0.0	\$15,586	2.8	1.9
Total	20-24	4,167	11.6	0.0	\$35,831	3.2	1.7
Total	25-34	8,608	23.9	0.0	\$52,368	3.4	1.5
Total	35-44	6,576	18.3	0.0	\$58,821	3.5	1.4
Total	45-54	7,970	22.1	0.0	\$70,827	3.6	1.2
Total	55-64	3,613	10.0	0.0	\$73,619	3.7	1.2
Total	65-Up	494	1.4	0.0	\$44,617	3.3	1.2
Total	N/A	3,873	10.8	0.0	\$29,641	2.2	1.1
Total	Total	36,012	100.0	100.0	\$54,573	3.3	1.4

Note: Persons worked any time during the year.

Industry Determination: Based on the industry of employment in which the person made the most money in the year.

N/A: Represents persons with demographic data that are unavailable.

N/A = Nonresidents, individuals for whom demographic data are not available.

Source: Demographics of Persons Working in Wyoming by County, Industry, Age, & Gender, 2000-2018.

Research & Planning, Wyoming Department of Workforce Services.

Prepared by M. Moore, Research & Planning, WY DWS, 7/31/19.

Average Earnings by Age and Gender in the 21 - Mining Industry in 2008

Gender	Age Group	Number	Age Percent	Gender Percent	Average Annual Wage	Average Quarters Worked	Average Annual Employers
Women	00-19	110	3.0	0.0	\$10,615	2.9	1.7
Women	20-24	397	10.7	0.0	\$27,229	3.3	1.8
Women	25-34	842	22.6	0.0	\$41,886	3.6	1.5
Women	35-44	795	21.4	0.0	\$45,879	3.6	1.3
Women	45-54	1,054	28.3	0.0	\$52,868	3.8	1.3
Women	55-64	457	12.3	0.0	\$52,126	3.7	1.2
Women	65-Up	61	1.6	0.0	\$37,880	3.4	1.1
Women	N/A	7	0.2	0.0	\$17,425	3.4	1.0
Women	Total	3,723	100.0	9.7	\$44,506	3.6	1.4
Men	00-19	741	2.4	0.0	\$17,301	2.8	2.0
Men	20-24	3,905	12.7	0.0	\$39,492	3.2	1.7
Men	25-34	8,743	28.5	0.0	\$57,002	3.4	1.4
Men	35-44	6,077	19.8	0.0	\$64,832	3.5	1.3
Men	45-54	7,093	23.1	0.0	\$75,932	3.6	1.2
Men	55-64	3,635	11.8	0.0	\$80,113	3.7	1.2
Men	65-Up	490	1.6	0.0	\$55,257	3.3	1.1
Men	N/A	41	0.1	0.0	\$61,032	2.9	1.3
Men	Total	30,725	100.0	80.0	\$62,450	3.4	1.4
N/A	N/A	3,982	100.0	0.0	\$30,515	2.1	1.1
N/A	Total	3,982	100.0	10.4	\$30,515	2.1	1.1
Total	00-19	851	2.2	0.0	\$16,436	2.8	1.9
Total	20-24	4,302	11.2	0.0	\$38,360	3.2	1.7
Total	25-34	9,585	24.9	0.0	\$55,674	3.4	1.4
Total	35-44	6,872	17.9	0.0	\$62,639	3.5	1.3
Total	45-54	8,147	21.2	0.0	\$72,948	3.6	1.2
Total	55-64	4,092	10.6	0.0	\$76,987	3.7	1.2
Total	65-Up	551	1.4	0.0	\$53,334	3.3	1.1
Total	N/A	4,030	10.5	0.0	\$30,802	2.1	1.1
Total	Total	38,430	100.0	100.0	\$57,402	3.3	1.3

Note: Persons worked any time during the year.

Industry Determination: Based on the industry of employment in which the person made the most money in the year.

N/A: Represents persons with demographic data that are unavailable.

N/A = Nonresidents, individuals for whom demographic data are not available.

Source: Demographics of Persons Working in Wyoming by County, Industry, Age, & Gender, 2000-2018.

Research & Planning, Wyoming Department of Workforce Services.

Prepared by M. Moore, Research & Planning, WY DWS, 7/31/19.

Average Earnings by Age and Gender in the 21 - Mining Industry in 2009

Gender	Age Group	Number	Age Percent	Gender Percent	Average Annual Wage	Average Quarters Worked	Average Annual Employers
Women	00-19	62	1.9	0.0	\$7,230	2.7	1.5
Women	20-24	271	8.1	0.0	\$28,241	3.2	1.6
Women	25-34	781	23.5	0.0	\$45,097	3.6	1.3
Women	35-44	673	20.2	0.0	\$47,175	3.6	1.3
Women	45-54	1,007	30.2	0.0	\$54,176	3.7	1.2
Women	55-64	467	14.0	0.0	\$51,039	3.6	1.1
Women	65-Up	61	1.8	0.0	\$41,949	3.4	1.1
Women	N/A	7	0.2	0.0	\$17,064	3.4	1.1
Women	Total	3,329	100.0	10.2	\$46,903	3.6	1.3
Men	00-19	322	1.2	0.0	\$13,740	2.6	1.5
Men	20-24	2,667	10.0	0.0	\$34,856	3.1	1.4
Men	25-34	7,704	28.8	0.0	\$53,204	3.3	1.3
Men	35-44	5,453	20.4	0.0	\$62,222	3.5	1.2
Men	45-54	6,289	23.5	0.0	\$72,930	3.6	1.2
Men	55-64	3,802	14.2	0.0	\$75,568	3.6	1.1
Men	65-Up	484	1.8	0.0	\$50,559	3.2	1.1
Men	N/A	36	0.1	0.0	\$56,556	3.0	1.3
Men	Total	26,757	100.0	82.2	\$60,509	3.4	1.2
N/A	N/A	2,460	100.0	0.0	\$33,161	2.3	1.1
N/A	Total	2,460	100.0	7.6	\$33,161	2.3	1.1
Total	00-19	384	1.2	0.0	\$12,689	2.6	1.5
Total	20-24	2,938	9.0	0.0	\$34,246	3.1	1.4
Total	25-34	8,485	26.1	0.0	\$52,458	3.4	1.3
Total	35-44	6,126	18.8	0.0	\$60,568	3.5	1.2
Total	45-54	7,296	22.4	0.0	\$70,341	3.6	1.2
Total	55-64	4,269	13.1	0.0	\$72,884	3.6	1.1
Total	65-Up	545	1.7	0.0	\$49,595	3.3	1.1
Total	N/A	2,503	7.7	0.0	\$33,452	2.3	1.1
Total	Total	32,546	100.0	100.0	\$57,050	3.4	1.2

Note: Persons worked any time during the year.

Industry Determination: Based on the industry of employment in which the person made the most money in the year.

N/A: Represents persons with demographic data that are unavailable.

N/A = Nonresidents, individuals for whom demographic data are not available.

Source: Demographics of Persons Working in Wyoming by County, Industry, Age, & Gender, 2000-2018.

Research & Planning, Wyoming Department of Workforce Services.

Prepared by M. Moore, Research & Planning, WY DWS, 7/31/19.

Average Earnings by Age and Gender in the 21 - Mining Industry in 2010

Gender	Age Group	Number	Age Percent	Gender Percent	Average Annual Wage	Average Quarters Worked	Average Annual Employers
Women	00-19	61	2.0	0.0	\$7,732	2.7	1.5
Women	20-24	242	7.8	0.0	\$26,017	3.1	1.5
Women	25-34	694	22.4	0.0	\$47,464	3.5	1.3
Women	35-44	618	19.9	0.0	\$51,187	3.7	1.3
Women	45-54	919	29.7	0.0	\$56,605	3.8	1.2
Women	55-64	500	16.1	0.0	\$58,036	3.7	1.1
Women	65-Up	59	1.9	0.0	\$38,095	3.6	1.2
Women	N/A	6	0.2	0.0	\$19,222	3.8	1.3
Women	Total	3,099	100.0	9.7	\$49,933	3.6	1.2
Men	00-19	355	1.4	0.0	\$15,514	2.7	1.7
Men	20-24	2,477	9.4	0.0	\$35,814	3.1	1.5
Men	25-34	7,668	29.2	0.0	\$56,761	3.3	1.3
Men	35-44	5,383	20.5	0.0	\$66,792	3.5	1.2
Men	45-54	5,914	22.5	0.0	\$76,446	3.6	1.2
Men	55-64	3,950	15.0	0.0	\$79,629	3.6	1.1
Men	65-Up	487	1.9	0.0	\$56,348	3.3	1.1
Men	N/A	31	0.1	0.0	\$55,483	3.1	1.1
Men	Total	26,265	100.0	82.3	\$64,146	3.4	1.2
N/A	N/A	2,539	100.0	0.0	\$34,638	2.3	1.0
N/A	Total	2,539	100.0	8.0	\$34,638	2.3	1.0
Total	00-19	416	1.3	0.0	\$14,373	2.7	1.7
Total	20-24	2,719	8.5	0.0	\$34,942	3.1	1.5
Total	25-34	8,362	26.2	0.0	\$55,990	3.4	1.3
Total	35-44	6,001	18.8	0.0	\$65,185	3.5	1.2
Total	45-54	6,833	21.4	0.0	\$73,778	3.6	1.2
Total	55-64	4,450	13.9	0.0	\$77,203	3.7	1.1
Total	65-Up	546	1.7	0.0	\$54,376	3.4	1.1
Total	N/A	2,576	8.1	0.0	\$34,853	2.3	1.0
Total	Total	31,903	100.0	100.0	\$60,417	3.4	1.2

Note: Persons worked any time during the year.

Industry Determination: Based on the industry of employment in which the person made the most money in the year.

N/A: Represents persons with demographic data that are unavailable.

N/A = Nonresidents, individuals for whom demographic data are not available.

Source: Demographics of Persons Working in Wyoming by County, Industry, Age, & Gender, 2000-2018.

Research & Planning, Wyoming Department of Workforce Services.

Prepared by M. Moore, Research & Planning, WY DWS, 7/31/19.

Average Earnings by Age and Gender in the 21 - Mining Industry in 2011

Gender	Age Group	Number	Age Percent	Gender Percent	Average Annual Wage	Average Quarters Worked	Average Annual Employers
Women	00-19	67	2.0	0.0	\$7,547	2.8	1.6
Women	20-24	255	7.6	0.0	\$24,273	3.0	1.5
Women	25-34	757	22.6	0.0	\$46,845	3.6	1.4
Women	35-44	684	20.4	0.0	\$52,435	3.7	1.3
Women	45-54	932	27.9	0.0	\$55,210	3.7	1.2
Women	55-64	578	17.3	0.0	\$58,046	3.7	1.2
Women	65-Up	68	2.0	0.0	\$42,964	3.5	1.1
Women	N/A	5	0.1	0.0	\$29,250	3.8	1.0
Women	Total	3,346	100.0	9.5	\$49,640	3.6	1.3
Men	00-19	445	1.6	0.0	\$15,433	2.6	1.8
Men	20-24	2,898	10.1	0.0	\$38,047	3.1	1.6
Men	25-34	8,594	30.0	0.0	\$59,315	3.4	1.3
Men	35-44	6,008	21.0	0.0	\$69,930	3.5	1.3
Men	45-54	5,958	20.8	0.0	\$78,342	3.6	1.2
Men	55-64	4,184	14.6	0.0	\$83,701	3.7	1.1
Men	65-Up	535	1.9	0.0	\$59,274	3.3	1.1
Men	N/A	24	0.1	0.0	\$61,696	3.0	1.0
Men	Total	28,646	100.0	81.6	\$66,228	3.4	1.3
N/A	N/A	3,107	100.0	0.0	\$36,833	2.3	1.1
N/A	Total	3,107	100.0	8.9	\$36,833	2.3	1.1
Total	00-19	512	1.5	0.0	\$14,401	2.6	1.7
Total	20-24	3,153	9.0	0.0	\$36,933	3.1	1.6
Total	25-34	9,351	26.6	0.0	\$58,306	3.4	1.3
Total	35-44	6,692	19.1	0.0	\$68,141	3.5	1.3
Total	45-54	6,890	19.6	0.0	\$75,213	3.6	1.2
Total	55-64	4,762	13.6	0.0	\$80,587	3.7	1.1
Total	65-Up	603	1.7	0.0	\$57,435	3.4	1.1
Total	N/A	3,136	8.9	0.0	\$37,011	2.3	1.1
Total	Total	35,099	100.0	100.0	\$62,045	3.4	1.3

Note: Persons worked any time during the year.

Industry Determination: Based on the industry of employment in which the person made the most money in the year.

N/A: Represents persons with demographic data that are unavailable.

N/A = Nonresidents, individuals for whom demographic data are not available.

Source: Demographics of Persons Working in Wyoming by County, Industry, Age, & Gender, 2000-2018.

Research & Planning, Wyoming Department of Workforce Services.

Prepared by M. Moore, Research & Planning, WY DWS, 7/31/19.

Average Earnings by Age and Gender in the 21 - Mining Industry in 2012

Gender	Age Group	Number	Age Percent	Gender Percent	Average Annual Wage	Average Quarters Worked	Average Annual Employers
Women	00-19	54	1.6	0.0	\$6,578	2.9	1.6
Women	20-24	245	7.1	0.0	\$27,595	3.1	1.4
Women	25-34	780	22.7	0.0	\$49,770	3.6	1.4
Women	35-44	718	20.9	0.0	\$55,944	3.7	1.3
Women	45-54	922	26.8	0.0	\$57,594	3.8	1.3
Women	55-64	625	18.2	0.0	\$59,997	3.7	1.2
Women	65-Up	84	2.4	0.0	\$45,264	3.4	1.1
Women	N/A	7	0.2	0.0	\$12,265	2.6	1.0
Women	Total	3,435	100.0	9.7	\$52,574	3.6	1.3
Men	00-19	377	1.3	0.0	\$18,225	2.8	1.8
Men	20-24	2,699	9.4	0.0	\$41,360	3.2	1.5
Men	25-34	8,597	30.0	0.0	\$63,143	3.4	1.3
Men	35-44	6,176	21.5	0.0	\$74,489	3.5	1.2
Men	45-54	5,684	19.8	0.0	\$81,404	3.6	1.2
Men	55-64	4,510	15.7	0.0	\$85,848	3.7	1.2
Men	65-Up	593	2.1	0.0	\$65,421	3.4	1.1
Men	N/A	26	0.1	0.0	\$60,735	3.3	1.4
Men	Total	28,662	100.0	81.1	\$70,185	3.5	1.3
N/A	N/A	3,251	100.0	0.0	\$39,417	2.3	1.1
N/A	Total	3,251	100.0	9.2	\$39,417	2.3	1.1
Total	00-19	431	1.2	0.0	\$16,766	2.8	1.8
Total	20-24	2,944	8.3	0.0	\$40,215	3.2	1.5
Total	25-34	9,377	26.5	0.0	\$62,030	3.4	1.3
Total	35-44	6,894	19.5	0.0	\$72,558	3.6	1.3
Total	45-54	6,606	18.7	0.0	\$78,081	3.6	1.2
Total	55-64	5,135	14.5	0.0	\$82,701	3.7	1.2
Total	65-Up	677	1.9	0.0	\$62,920	3.4	1.1
Total	N/A	3,284	9.3	0.0	\$39,528	2.3	1.1
Total	Total	35,348	100.0	100.0	\$65,644	3.4	1.3

Note: Persons worked any time during the year.

Industry Determination: Based on the industry of employment in which the person made the most money in the year.

N/A: Represents persons with demographic data that are unavailable.

N/A = Nonresidents, individuals for whom demographic data are not available.

Source: Demographics of Persons Working in Wyoming by County, Industry, Age, & Gender, 2000-2018.

Research & Planning, Wyoming Department of Workforce Services.

Prepared by M. Moore, Research & Planning, WY DWS, 7/31/19.

Average Earnings by Age and Gender in the 21 - Mining Industry in 2013

Gender	Age Group	Number	Age Percent	Gender Percent	Average Annual Wage	Average Quarters Worked	Average Annual Employers
Women	00-19	64	1.9	0.0	\$7,838	2.7	1.6
Women	20-24	208	6.3	0.0	\$25,391	3.0	1.5
Women	25-34	756	23.0	0.0	\$48,373	3.6	1.3
Women	35-44	686	20.9	0.0	\$58,329	3.7	1.3
Women	45-54	832	25.3	0.0	\$59,423	3.8	1.2
Women	55-64	639	19.4	0.0	\$61,640	3.8	1.2
Women	65-Up	99	3.0	0.0	\$46,205	3.6	1.1
Women	N/A	5	0.2	0.0	\$6,141	2.8	1.0
Women	Total	3,289	100.0	9.7	\$53,451	3.6	1.3
Men	00-19	346	1.3	0.0	\$16,985	2.8	1.9
Men	20-24	2,451	8.9	0.0	\$39,927	3.1	1.6
Men	25-34	8,291	30.0	0.0	\$65,095	3.4	1.3
Men	35-44	6,192	22.4	0.0	\$76,664	3.5	1.2
Men	45-54	5,227	18.9	0.0	\$82,817	3.6	1.2
Men	55-64	4,454	16.1	0.0	\$89,047	3.7	1.1
Men	65-Up	640	2.3	0.0	\$74,864	3.5	1.1
Men	N/A	19	0.1	0.0	\$68,966	3.5	1.1
Men	Total	27,620	100.0	81.7	\$72,298	3.5	1.3
N/A	N/A	2,912	100.0	0.0	\$38,159	2.3	1.1
N/A	Total	2,912	100.0	8.6	\$38,159	2.3	1.1
Total	00-19	410	1.2	0.0	\$15,557	2.8	1.9
Total	20-24	2,659	7.9	0.0	\$38,790	3.1	1.6
Total	25-34	9,047	26.7	0.0	\$63,697	3.4	1.3
Total	35-44	6,878	20.3	0.0	\$74,835	3.6	1.2
Total	45-54	6,059	17.9	0.0	\$79,604	3.7	1.2
Total	55-64	5,093	15.1	0.0	\$85,608	3.7	1.1
Total	65-Up	739	2.2	0.0	\$71,025	3.5	1.1
Total	N/A	2,936	8.7	0.0	\$38,304	2.3	1.1
Total	Total	33,821	100.0	100.0	\$67,525	3.4	1.3

Note: Persons worked any time during the year.

Industry Determination: Based on the industry of employment in which the person made the most money in the year.

N/A: Represents persons with demographic data that are unavailable.

N/A = Nonresidents, individuals for whom demographic data are not available.

Source: Demographics of Persons Working in Wyoming by County, Industry, Age, & Gender, 2000-2018.

Research & Planning, Wyoming Department of Workforce Services.

Prepared by M. Moore, Research & Planning, WY DWS, 7/31/19.

Average Earnings by Age and Gender in the 21 - Mining Industry in 2014

Gender	Age Group	Number	Age Percent	Gender Percent	Average Annual Wage	Average Quarters Worked	Average Annual Employers
Women	00-19	65	1.9	0.0	\$9,402	2.9	1.7
Women	20-24	211	6.3	0.0	\$28,381	3.1	1.6
Women	25-34	760	22.6	0.0	\$50,198	3.5	1.4
Women	35-44	741	22.0	0.0	\$58,160	3.7	1.3
Women	45-54	804	23.9	0.0	\$60,181	3.7	1.2
Women	55-64	663	19.7	0.0	\$63,682	3.8	1.2
Women	65-Up	112	3.3	0.0	\$47,509	3.5	1.1
Women	N/A	7	0.2	0.0	\$28,821	2.7	1.0
Women	Total	3,363	100.0	9.5	\$54,706	3.6	1.3
Men	00-19	401	1.4	0.0	\$17,129	2.8	1.9
Men	20-24	2,668	9.3	0.0	\$41,054	3.1	1.7
Men	25-34	8,709	30.4	0.0	\$66,363	3.4	1.3
Men	35-44	6,518	22.8	0.0	\$79,617	3.5	1.3
Men	45-54	5,071	17.7	0.0	\$84,910	3.6	1.2
Men	55-64	4,524	15.8	0.0	\$90,726	3.7	1.1
Men	65-Up	720	2.5	0.0	\$76,417	3.4	1.1
Men	N/A	24	0.1	0.0	\$60,565	3.1	1.0
Men	Total	28,635	100.0	80.9	\$73,714	3.5	1.3
N/A	N/A	3,410	100.0	0.0	\$37,389	2.2	1.1
N/A	Total	3,410	100.0	9.6	\$37,389	2.2	1.1
Total	00-19	466	1.3	0.0	\$16,051	2.8	1.8
Total	20-24	2,879	8.1	0.0	\$40,125	3.1	1.7
Total	25-34	9,469	26.7	0.0	\$65,065	3.4	1.3
Total	35-44	7,259	20.5	0.0	\$77,427	3.5	1.3
Total	45-54	5,875	16.6	0.0	\$81,526	3.6	1.2
Total	55-64	5,187	14.6	0.0	\$87,269	3.7	1.1
Total	65-Up	832	2.3	0.0	\$72,525	3.4	1.1
Total	N/A	3,441	9.7	0.0	\$37,533	2.2	1.1
Total	Total	35,408	100.0	100.0	\$68,410	3.4	1.3

Note: Persons worked any time during the year.

Industry Determination: Based on the industry of employment in which the person made the most money in the year.

N/A: Represents persons with demographic data that are unavailable.

N/A = Nonresidents, individuals for whom demographic data are not available.

Source: Demographics of Persons Working in Wyoming by County, Industry, Age, & Gender, 2000-2018.

Research & Planning, Wyoming Department of Workforce Services.

Prepared by M. Moore, Research & Planning, WY DWS, 7/31/19.

Average Earnings by Age and Gender in the 21 - Mining Industry in 2015

Gender	Age Group	Number	Age Percent	Gender Percent	Average Annual Wage	Average Quarters Worked	Average Annual Employers
Women	00-19	45	1.5	0.0	\$10,346	2.9	1.9
Women	20-24	182	5.9	0.0	\$33,163	3.3	1.5
Women	25-34	651	21.1	0.0	\$50,771	3.6	1.4
Women	35-44	671	21.8	0.0	\$60,205	3.7	1.3
Women	45-54	736	23.9	0.0	\$61,194	3.7	1.2
Women	55-64	674	21.9	0.0	\$66,489	3.7	1.2
Women	65-Up	117	3.8	0.0	\$51,948	3.5	1.1
Women	N/A	3	0.1	0.0	\$12,654	2.0	1.0
Women	Total	3,079	100.0	10.0	\$57,135	3.6	1.3
Men	00-19	189	0.8	0.0	\$17,930	2.8	1.7
Men	20-24	1,809	7.2	0.0	\$40,937	3.2	1.5
Men	25-34	7,451	29.6	0.0	\$62,922	3.4	1.3
Men	35-44	5,982	23.8	0.0	\$76,819	3.5	1.2
Men	45-54	4,541	18.0	0.0	\$83,948	3.6	1.2
Men	55-64	4,440	17.6	0.0	\$90,472	3.6	1.1
Men	65-Up	726	2.9	0.0	\$72,247	3.3	1.1
Men	N/A	21	0.1	0.0	\$60,713	3.0	1.2
Men	Total	25,159	100.0	81.9	\$73,232	3.5	1.3
N/A	N/A	2,481	100.0	0.0	\$35,373	2.2	1.1
N/A	Total	2,481	100.0	8.1	\$35,373	2.2	1.1
Total	00-19	234	0.8	0.0	\$16,472	2.8	1.7
Total	20-24	1,991	6.5	0.0	\$40,226	3.2	1.5
Total	25-34	8,102	26.4	0.0	\$61,945	3.4	1.3
Total	35-44	6,653	21.7	0.0	\$75,143	3.5	1.2
Total	45-54	5,277	17.2	0.0	\$80,775	3.6	1.2
Total	55-64	5,114	16.6	0.0	\$87,311	3.6	1.1
Total	65-Up	843	2.7	0.0	\$69,430	3.4	1.1
Total	N/A	2,505	8.2	0.0	\$35,558	2.2	1.1
Total	Total	30,719	100.0	100.0	\$68,561	3.4	1.2

Note: Persons worked any time during the year.

Industry Determination: Based on the industry of employment in which the person made the most money in the year.

N/A: Represents persons with demographic data that are unavailable.

N/A = Nonresidents, individuals for whom demographic data are not available.

Source: Demographics of Persons Working in Wyoming by County, Industry, Age, & Gender, 2000-2018.

Research & Planning, Wyoming Department of Workforce Services.

Prepared by M. Moore, Research & Planning, WY DWS, 7/31/19.

Average Earnings by Age and Gender in the 21 - Mining Industry in 2016

Gender	Age Group	Number	Age Percent	Gender Percent	Average Annual Wage	Average Quarters Worked	Average Annual Employers
Women	00-19	31	1.3	0.0	\$5,661	2.4	1.5
Women	20-24	103	4.2	0.0	\$31,468	3.2	1.4
Women	25-34	481	19.6	0.0	\$50,516	3.6	1.2
Women	35-44	585	23.9	0.0	\$58,757	3.7	1.2
Women	45-54	573	23.4	0.0	\$60,484	3.7	1.2
Women	55-64	561	22.9	0.0	\$57,960	3.6	1.2
Women	65-Up	116	4.7	0.0	\$46,140	3.4	1.1
Women	N/A	3	0.1	0.0	\$12,357	3.0	1.5
Women	Total	2,452	100.0	10.4	\$54,909	3.6	1.2
Men	00-19	117	0.6	0.0	\$10,404	2.6	1.6
Men	20-24	973	4.9	0.0	\$39,266	3.2	1.5
Men	25-34	5,289	26.8	0.0	\$61,316	3.4	1.3
Men	35-44	4,977	25.2	0.0	\$74,610	3.5	1.2
Men	45-54	3,784	19.2	0.0	\$79,996	3.6	1.2
Men	55-64	3,916	19.8	0.0	\$84,913	3.6	1.1
Men	65-Up	689	3.5	0.0	\$66,383	3.1	1.1
Men	N/A	14	0.1	0.0	\$56,689	3.4	1.3
Men	Total	19,759	100.0	83.6	\$71,705	3.5	1.2
N/A	N/A	1,424	100.0	0.0	\$37,182	2.4	1.1
N/A	Total	1,424	100.0	6.0	\$37,182	2.4	1.1
Total	00-19	148	0.6	0.0	\$9,411	2.6	1.6
Total	20-24	1,076	4.6	0.0	\$38,519	3.2	1.5
Total	25-34	5,770	24.4	0.0	\$60,416	3.4	1.3
Total	35-44	5,562	23.5	0.0	\$72,943	3.5	1.2
Total	45-54	4,357	18.4	0.0	\$77,430	3.6	1.2
Total	55-64	4,477	18.9	0.0	\$81,536	3.6	1.1
Total	65-Up	805	3.4	0.0	\$63,466	3.2	1.1
Total	N/A	1,440	6.1	0.0	\$37,337	2.4	1.1
Total	Total	23,635	100.0	100.0	\$67,883	3.4	1.2

Note: Persons worked any time during the year.

Industry Determination: Based on the industry of employment in which the person made the most money in the year.

N/A: Represents persons with demographic data that are unavailable.

N/A = Nonresidents, individuals for whom demographic data are not available.

Source: Demographics of Persons Working in Wyoming by County, Industry, Age, & Gender, 2000-2018.

Research & Planning, Wyoming Department of Workforce Services.

Prepared by M. Moore, Research & Planning, WY DWS, 7/31/19.

Average Earnings by Age and Gender in the 21 - Mining Industry in 2017

Gender	Age Group	Number	Age Percent	Gender Percent	Average Annual Wage	Average Quarters Worked	Average Annual Employers
Women	00-19	37	1.6	0.0	\$7,018	2.7	1.7
Women	20-24	106	4.6	0.0	\$29,932	3.2	1.8
Women	25-34	437	19.1	0.0	\$51,835	3.6	1.3
Women	35-44	573	25.0	0.0	\$63,798	3.7	1.3
Women	45-54	516	22.5	0.0	\$64,854	3.8	1.3
Women	55-64	503	22.0	0.0	\$61,654	3.7	1.1
Women	65-Up	116	5.1	0.0	\$48,018	3.5	1.1
Women	N/A	3	0.1	0.0	\$25,583	3.5	1.0
Women	Total	2,290	100.0	9.3	\$57,964	3.7	1.3
Men	00-19	259	1.3	0.0	\$15,160	2.7	1.8
Men	20-24	1,115	5.6	0.0	\$39,415	3.2	1.7
Men	25-34	5,316	26.6	0.0	\$64,893	3.4	1.4
Men	35-44	5,250	26.3	0.0	\$80,384	3.6	1.3
Men	45-54	3,619	18.1	0.0	\$85,666	3.7	1.2
Men	55-64	3,744	18.7	0.0	\$88,153	3.7	1.1
Men	65-Up	670	3.4	0.0	\$73,581	3.3	1.1
Men	N/A	11	0.1	0.0	\$75,739	3.4	1.0
Men	Total	19,984	100.0	81.6	\$75,313	3.5	1.3
N/A	N/A	2,226	100.0	0.0	\$37,446	2.3	1.1
N/A	Total	2,226	100.0	9.1	\$37,446	2.3	1.1
Total	00-19	296	1.2	0.0	\$14,142	2.7	1.8
Total	20-24	1,221	5.0	0.0	\$38,591	3.2	1.7
Total	25-34	5,753	23.5	0.0	\$63,901	3.4	1.4
Total	35-44	5,823	23.8	0.0	\$78,752	3.6	1.3
Total	45-54	4,135	16.9	0.0	\$83,069	3.7	1.2
Total	55-64	4,247	17.3	0.0	\$85,015	3.7	1.1
Total	65-Up	786	3.2	0.0	\$69,808	3.4	1.1
Total	N/A	2,239	9.1	0.0	\$37,623	2.3	1.1
Total	Total	24,500	100.0	100.0	\$70,251	3.4	1.3

Note: Persons worked any time during the year.

Industry Determination: Based on the industry of employment in which the person made the most money in the year.

N/A: Represents persons with demographic data that are unavailable.

N/A = Nonresidents, individuals for whom demographic data are not available.

Source: Demographics of Persons Working in Wyoming by County, Industry, Age, & Gender, 2000-2018.

Research & Planning, Wyoming Department of Workforce Services.

Prepared by M. Moore, Research & Planning, WY DWS, 7/31/19.

Average Earnings by Age and Gender in the 21 - Mining Industry in 2018

Gender	Age Group	Number	Age Percent	Gender Percent	Average Annual Wage	Average Quarters Worked	Average Annual Employers
Women	00-19	36	1.5	0.0	\$11,026	3.0	1.9
Women	20-24	116	4.9	0.0	\$30,792	3.2	1.7
Women	25-34	460	19.4	0.0	\$52,167	3.6	1.4
Women	35-44	611	25.8	0.0	\$65,249	3.8	1.3
Women	45-54	510	21.5	0.0	\$64,480	3.8	1.2
Women	55-64	516	21.8	0.0	\$65,130	3.7	1.1
Women	65-Up	115	4.9	0.0	\$47,894	3.5	1.1
Women	N/A	3	0.1	0.0	\$31,962	3.3	1.0
Women	Total	2,367	100.0	9.2	\$59,116	3.7	1.3
Men	00-19	266	1.3	0.0	\$16,344	2.7	1.8
Men	20-24	1,282	6.3	0.0	\$39,185	3.2	1.7
Men	25-34	5,380	26.4	0.0	\$67,545	3.4	1.4
Men	35-44	5,464	26.8	0.0	\$83,023	3.6	1.2
Men	45-54	3,637	17.8	0.0	\$89,165	3.7	1.2
Men	55-64	3,655	17.9	0.0	\$91,160	3.7	1.1
Men	65-Up	690	3.4	0.0	\$75,459	3.4	1.1
Men	N/A	9	0.0	0.0	\$65,141	3.1	1.0
Men	Total	20,383	100.0	79.1	\$77,602	3.5	1.3
N/A	N/A	3,027	100.0	0.0	\$39,886	2.3	1.1
N/A	Total	3,027	100.0	11.7	\$39,886	2.3	1.1
Total	00-19	302	1.2	0.0	\$15,710	2.8	1.8
Total	20-24	1,398	5.4	0.0	\$38,488	3.2	1.7
Total	25-34	5,840	22.7	0.0	\$66,334	3.5	1.4
Total	35-44	6,075	23.6	0.0	\$81,236	3.6	1.2
Total	45-54	4,147	16.1	0.0	\$86,129	3.7	1.2
Total	55-64	4,171	16.2	0.0	\$87,940	3.7	1.1
Total	65-Up	805	3.1	0.0	\$71,521	3.4	1.1
Total	N/A	3,039	11.8	0.0	\$39,953	2.3	1.1
Total	Total	25,777	100.0	100.0	\$71,475	3.4	1.3

Note: Persons worked any time during the year.

Industry Determination: Based on the industry of employment in which the person made the most money in the year.

N/A: Represents persons with demographic data that are unavailable.

N/A = Nonresidents, individuals for whom demographic data are not available.

Source: Demographics of Persons Working in Wyoming by County, Industry, Age, & Gender, 2000-2018.

Research & Planning, Wyoming Department of Workforce Services.

Prepared by M. Moore, Research & Planning, WY DWS, 7/31/19.