

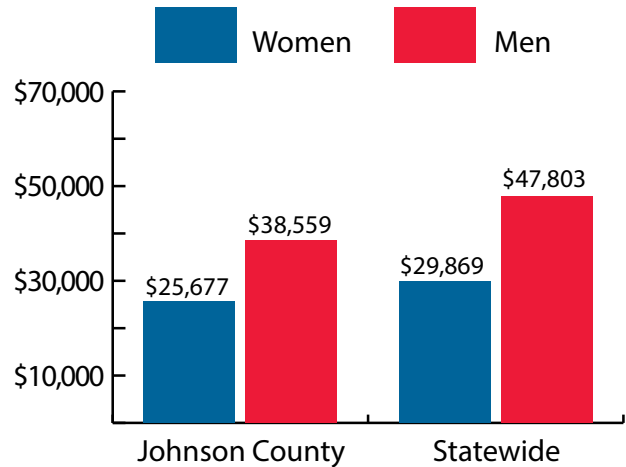
Johnson County at a Glance, 2018

Demographics of Persons Working in Wyoming by County, Industry, Age, & Gender, 2000-2018

Table: Total Number of Persons Working in Johnson County, WY, at Any Time by Gender and Age, 2017-2018

Gender	2017	2018	Change	
			N	%
Women	1,769	1,750	-19	-1.1
Men	1,793	1,833	40	2.2
Nonresidents	318	387	69	21.7
Total	3,880	3,970	90	2.3

Age	2017	2018	Change	
			N	%
00-19	310	279	-31	-10.0
20-24	315	314	-1	-0.3
25-34	642	655	13	2.0
35-44	690	703	13	1.9
45-54	646	640	-6	-0.9
55-64	623	626	3	0.5
65-Up	333	363	30	9.0
Nonresidents	321	390	69	21.5
Total	3,880	3,970	90	2.3



Women's Wages as % of Men's Wages

Johnson County: 66.6%

Total, Statewide: 62.5%

Figure: Average Annual Wages by Gender, 2018

Total = 3,970

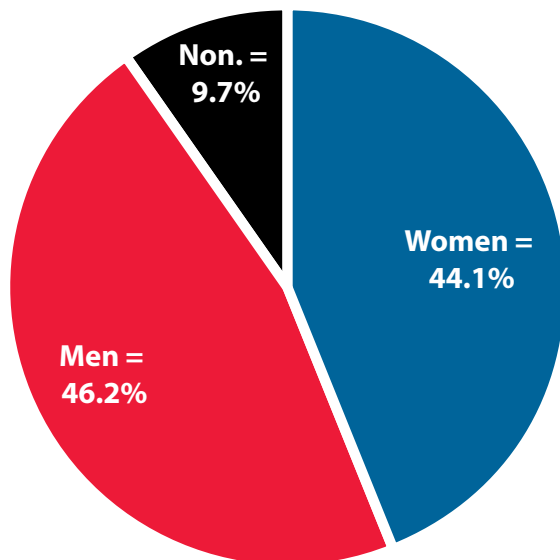


Figure: Persons Working by Gender, 2018

Total = 3,970

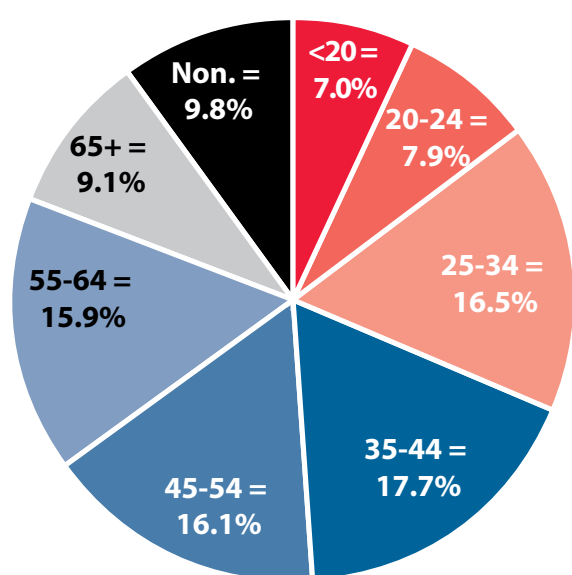


Figure: Persons Working by Age, 2018

Note: Nonresidents are individuals for whom demographic data are not available.

Source: Demographics of Persons Working in Wyoming by County, Industry, Age, & Gender, 2000-2018. Research & Planning, Wyoming Department of Workforce Services. Prepared by M. Moore, Research & Planning, WY DWS, 7/31/19.

Persons Working in Johnson County by Gender and Age, 2000-2018

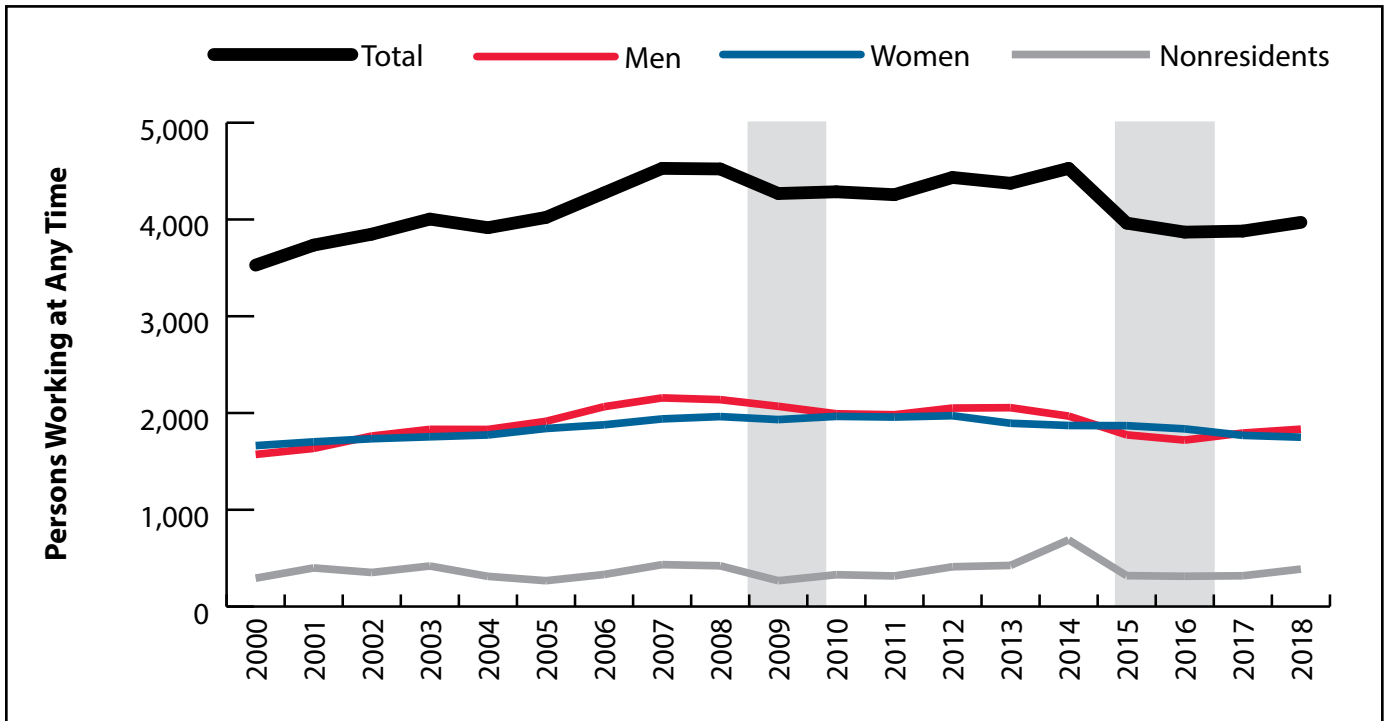


Figure: Persons Working in Johnson County at Any Time by Gender, 2000-2018

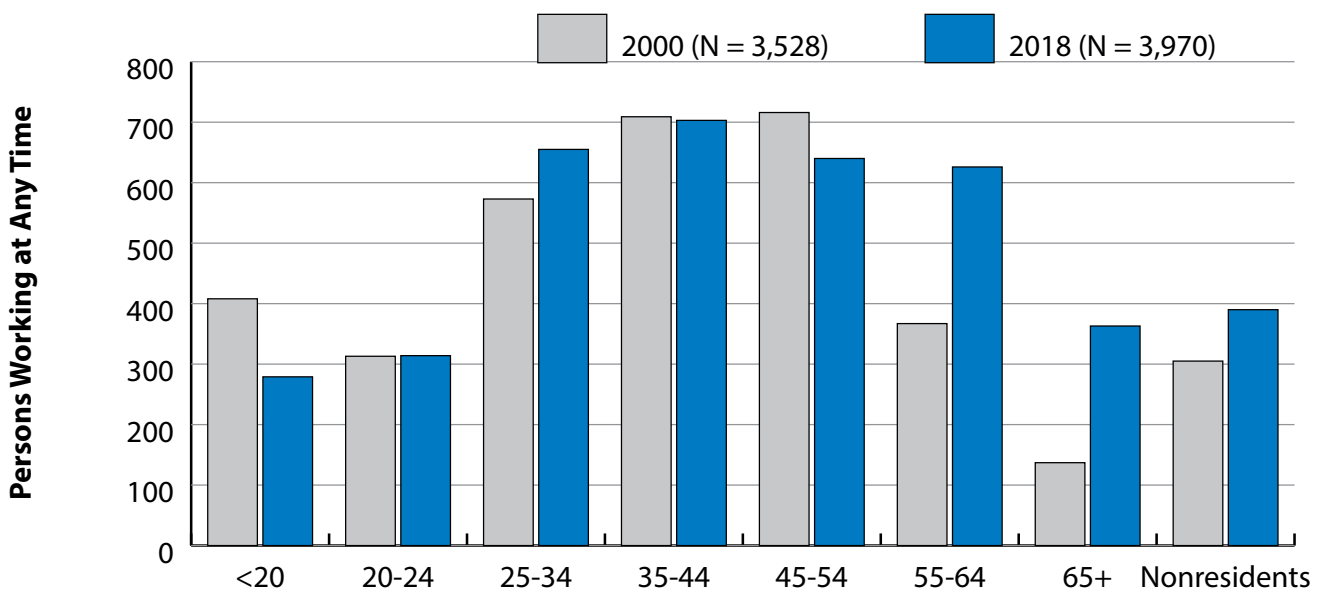


Figure: Persons Working in Johnson County at Any Time by Age, 2000-2018

Note: Nonresidents are individuals for whom demographic data are not available.
 Shaded areas indicate periods of economic downturn: 2009Q1-2010Q1 and 2015Q2-2016Q4.
 Source: Demographics of Persons Working in Wyoming by County, Industry, Age, & Gender, 2000-2018. Research & Planning, Wyoming Department of Workforce Services. Prepared by M. Moore, Research & Planning, WY DWS, 7/31/19.

Average Earnings by Age and Gender with Place of Work in Johnson County in 2000

Gender	Age Group	Number	Age Percent	Gender Percent	Average Annual Wage	Average Quarters Worked	Average Annual Employers
Women	00-19	210	12.6	0.0	\$2,961	2.6	1.7
Women	20-24	142	8.5	0.0	\$5,601	2.8	1.9
Women	25-34	265	15.9	0.0	\$11,215	3.4	1.7
Women	35-44	365	21.9	0.0	\$14,715	3.5	1.5
Women	45-54	403	24.2	0.0	\$18,300	3.6	1.4
Women	55-64	196	11.8	0.0	\$13,056	3.4	1.3
Women	65-Up	71	4.3	0.0	\$6,993	3.4	1.3
Women	N/A	11	0.7	0.0	\$10,246	2.5	1.2
Women	Total	1,663	100.0	47.1	\$12,209	3.3	1.5
Men	00-19	198	12.6	0.0	\$2,884	2.5	1.6
Men	20-24	171	10.9	0.0	\$9,963	3.0	1.9
Men	25-34	308	19.6	0.0	\$19,650	3.3	1.7
Men	35-44	344	21.9	0.0	\$26,765	3.4	1.4
Men	45-54	313	19.9	0.0	\$28,050	3.5	1.4
Men	55-64	171	10.9	0.0	\$27,971	3.4	1.4
Men	65-Up	66	4.2	0.0	\$10,034	3.1	1.3
Men	N/A						
Men	Total	1,572	100.0	44.6	\$20,267	3.2	1.5
N/A	N/A	293	100.0	0.0	\$4,382	1.7	1.1
N/A	Total	293	100.0	8.3	\$4,382	1.7	1.1
Total	00-19	408	11.6	0.0	\$2,924	2.6	1.7
Total	20-24	313	8.9	0.0	\$7,984	2.9	1.9
Total	25-34	573	16.2	0.0	\$15,749	3.3	1.7
Total	35-44	709	20.1	0.0	\$20,562	3.5	1.5
Total	45-54	716	20.3	0.0	\$22,562	3.5	1.4
Total	55-64	367	10.4	0.0	\$20,005	3.4	1.3
Total	65-Up	137	3.9	0.0	\$8,458	3.3	1.3
Total	N/A	305	8.6	0.0	\$4,907	1.7	1.1
Total	Total	3,528	100.0	100.0	\$15,149	3.1	1.5

Note: Persons worked at any time during the year.

County Determination: Based on county of employment in which the person made the most money in the year.

N/A: Represents persons with demographic data that is unavailable.

Average Earnings by Age and Gender with Place of Work in Johnson County in 2001

Gender	Age Group	Number	Age Percent	Gender Percent	Average Annual Wage	Average Quarters Worked	Average Annual Employers
Women	00-19	201	11.8	0.0	\$3,054	2.6	1.6
Women	20-24	156	9.2	0.0	\$5,683	2.7	1.8
Women	25-34	266	15.6	0.0	\$11,737	3.2	1.6
Women	35-44	341	20.0	0.0	\$15,517	3.4	1.5
Women	45-54	440	25.9	0.0	\$19,316	3.5	1.3
Women	55-64	199	11.7	0.0	\$14,266	3.4	1.3
Women	65-Up	89	5.2	0.0	\$6,546	3.1	1.2
Women	N/A	10	0.6	0.0	\$15,354	3.0	1.3
Women	Total	1,702	100.0	45.6	\$12,919	3.2	1.5
Men	00-19	212	13.0	0.0	\$3,561	2.5	1.7
Men	20-24	190	11.6	0.0	\$11,847	2.8	1.7
Men	25-34	298	18.2	0.0	\$19,982	3.2	1.7
Men	35-44	337	20.6	0.0	\$26,330	3.3	1.4
Men	45-54	340	20.8	0.0	\$28,604	3.4	1.3
Men	55-64	181	11.1	0.0	\$29,205	3.3	1.2
Men	65-Up	74	4.5	0.0	\$8,821	3.1	1.2
Men	N/A	3	0.1	0.0	\$50,360	2.5	1.0
Men	Total	1,634	100.0	43.7	\$20,562	3.1	1.5
N/A	N/A	399	100.0	0.0	\$5,645	1.4	1.1
N/A	Total	399	100.0	10.7	\$5,645	1.4	1.1
Total	00-19	413	11.1	0.0	\$3,314	2.5	1.7
Total	20-24	346	9.3	0.0	\$9,068	2.7	1.8
Total	25-34	564	15.1	0.0	\$16,093	3.2	1.7
Total	35-44	678	18.2	0.0	\$20,892	3.3	1.4
Total	45-54	780	20.9	0.0	\$23,365	3.5	1.3
Total	55-64	380	10.2	0.0	\$21,382	3.4	1.3
Total	65-Up	163	4.4	0.0	\$7,579	3.1	1.2
Total	N/A	411	11.0	0.0	\$6,099	1.5	1.1
Total	Total	3,735	100.0	100.0	\$15,486	3.0	1.4

Note: Persons worked at any time during the year.

County Determination: Based on county of employment in which the person made the most money in the year.

N/A: Represents persons with demographic data that is unavailable.

Average Earnings by Age and Gender with Place of Work in Johnson County in 2002

Gender	Age Group	Number	Age Percent	Gender Percent	Average Annual Wage	Average Quarters Worked	Average Annual Employers
Women	00-19	195	11.2	0.0	\$2,623	2.5	1.5
Women	20-24	162	9.3	0.0	\$6,246	2.7	1.7
Women	25-34	288	16.6	0.0	\$12,119	3.2	1.6
Women	35-44	319	18.4	0.0	\$16,221	3.4	1.4
Women	45-54	451	26.0	0.0	\$18,595	3.5	1.3
Women	55-64	227	13.1	0.0	\$15,834	3.3	1.2
Women	65-Up	80	4.6	0.0	\$6,901	3.1	1.2
Women	N/A	12	0.7	0.0	\$10,369	2.6	1.5
Women	Total	1,734	100.0	45.1	\$13,175	3.2	1.4
Men	00-19	240	13.6	0.0	\$3,572	2.5	1.6
Men	20-24	202	11.5	0.0	\$11,480	2.9	1.8
Men	25-34	313	17.8	0.0	\$21,515	3.3	1.6
Men	35-44	343	19.5	0.0	\$28,732	3.5	1.5
Men	45-54	375	21.3	0.0	\$29,520	3.4	1.3
Men	55-64	190	10.8	0.0	\$33,623	3.4	1.2
Men	65-Up	97	5.5	0.0	\$8,454	2.9	1.3
Men	N/A	3	0.1	0.0	\$87,016	2.5	1.0
Men	Total	1,762	100.0	45.8	\$21,690	3.2	1.5
N/A	N/A	352	100.0	0.0	\$4,998	1.6	1.2
N/A	Total	352	100.0	9.1	\$4,998	1.6	1.2
Total	00-19	435	11.3	0.0	\$3,147	2.5	1.6
Total	20-24	364	9.5	0.0	\$9,151	2.8	1.8
Total	25-34	601	15.6	0.0	\$17,012	3.3	1.6
Total	35-44	662	17.2	0.0	\$22,704	3.5	1.5
Total	45-54	826	21.5	0.0	\$23,555	3.5	1.3
Total	55-64	417	10.8	0.0	\$23,940	3.3	1.2
Total	65-Up	177	4.6	0.0	\$7,752	3.0	1.2
Total	N/A	366	9.5	0.0	\$5,622	1.6	1.2
Total	Total	3,848	100.0	100.0	\$16,326	3.0	1.4

Note: Persons worked at any time during the year.

County Determination: Based on county of employment in which the person made the most money in the year.

N/A: Represents persons with demographic data that is unavailable.

Average Earnings by Age and Gender with Place of Work in Johnson County in 2003

Gender	Age Group	Number	Age Percent	Gender Percent	Average Annual Wage	Average Quarters Worked	Average Annual Employers
Women	00-19	204	11.6	0.0	\$2,769	2.5	1.7
Women	20-24	175	10.0	0.0	\$7,193	2.8	1.7
Women	25-34	275	15.7	0.0	\$13,104	3.2	1.6
Women	35-44	334	19.0	0.0	\$17,709	3.5	1.5
Women	45-54	433	24.7	0.0	\$19,586	3.5	1.4
Women	55-64	234	13.3	0.0	\$18,499	3.5	1.2
Women	65-Up	88	5.0	0.0	\$6,893	3.1	1.2
Women	N/A	11	0.6	0.0	\$13,538	3.1	1.5
Women	Total	1,754	100.0	43.8	\$14,200	3.2	1.5
Men	00-19	234	12.8	0.0	\$3,493	2.6	1.6
Men	20-24	199	10.9	0.0	\$11,651	2.9	1.9
Men	25-34	335	18.3	0.0	\$22,390	3.2	1.6
Men	35-44	359	19.6	0.0	\$27,139	3.3	1.4
Men	45-54	366	20.0	0.0	\$30,046	3.4	1.3
Men	55-64	231	12.6	0.0	\$31,139	3.4	1.2
Men	65-Up	99	5.4	0.0	\$8,787	2.9	1.2
Men	N/A	8	0.4	0.0	\$13,261	2.1	1.4
Men	Total	1,831	100.0	45.7	\$21,598	3.1	1.4
N/A	N/A	419	100.0	0.0	\$4,485	1.4	1.1
N/A	Total	419	100.0	10.5	\$4,485	1.4	1.1
Total	00-19	438	10.9	0.0	\$3,156	2.6	1.6
Total	20-24	374	9.3	0.0	\$9,565	2.9	1.8
Total	25-34	610	15.2	0.0	\$18,204	3.2	1.6
Total	35-44	693	17.3	0.0	\$22,594	3.4	1.4
Total	45-54	799	20.0	0.0	\$24,377	3.5	1.3
Total	55-64	465	11.6	0.0	\$24,779	3.4	1.2
Total	65-Up	187	4.7	0.0	\$7,895	3.0	1.2
Total	N/A	438	10.9	0.0	\$4,873	1.5	1.1
Total	Total	4,004	100.0	100.0	\$16,566	3.0	1.4

Note: Persons worked at any time during the year.

County Determination: Based on county of employment in which the person made the most money in the year.

N/A: Represents persons with demographic data that is unavailable.

Average Earnings by Age and Gender with Place of Work in Johnson County in 2004

Gender	Age Group	Number	Age Percent	Gender Percent	Average Annual Wage	Average Quarters Worked	Average Annual Employers
Women	00-19	221	12.5	0.0	\$2,693	2.6	1.5
Women	20-24	165	9.3	0.0	\$8,376	3.0	1.7
Women	25-34	272	15.3	0.0	\$14,190	3.3	1.5
Women	35-44	330	18.6	0.0	\$19,206	3.6	1.6
Women	45-54	429	24.2	0.0	\$21,017	3.6	1.4
Women	55-64	251	14.2	0.0	\$18,384	3.6	1.3
Women	65-Up	94	5.3	0.0	\$6,592	3.0	1.1
Women	N/A	11	0.6	0.0	\$12,397	2.7	1.2
Women	Total	1,773	100.0	45.3	\$14,981	3.3	1.5
Men	00-19	239	13.1	0.0	\$4,060	2.6	1.7
Men	20-24	202	11.0	0.0	\$12,847	3.0	1.8
Men	25-34	351	19.2	0.0	\$24,335	3.3	1.6
Men	35-44	326	17.8	0.0	\$30,030	3.3	1.3
Men	45-54	373	20.4	0.0	\$33,014	3.5	1.3
Men	55-64	231	12.6	0.0	\$32,213	3.4	1.2
Men	65-Up	102	5.6	0.0	\$11,723	3.1	1.2
Men	N/A	6	0.3	0.0	\$37,242	2.8	1.2
Men	Total	1,830	100.0	46.7	\$23,536	3.2	1.5
N/A	N/A	312	100.0	0.0	\$5,106	1.5	1.1
N/A	Total	312	100.0	8.0	\$5,106	1.5	1.1
Total	00-19	460	11.7	0.0	\$3,403	2.6	1.6
Total	20-24	367	9.4	0.0	\$10,837	3.0	1.7
Total	25-34	623	15.9	0.0	\$19,906	3.3	1.6
Total	35-44	656	16.8	0.0	\$24,585	3.5	1.5
Total	45-54	802	20.5	0.0	\$26,597	3.6	1.3
Total	55-64	482	12.3	0.0	\$25,012	3.5	1.3
Total	65-Up	196	5.0	0.0	\$9,262	3.0	1.2
Total	N/A	329	8.4	0.0	\$5,936	1.6	1.1
Total	Total	3,915	100.0	100.0	\$18,193	3.1	1.4

Note: Persons worked at any time during the year.

County Determination: Based on county of employment in which the person made the most money in the year.

N/A: Represents persons with demographic data that is unavailable.

Average Earnings by Age and Gender with Place of Work in Johnson County in 2005

Gender	Age Group	Number	Age Percent	Gender Percent	Average Annual Wage	Average Quarters Worked	Average Annual Employers
Women	00-19	214	11.6	0.0	\$2,800	2.5	1.6
Women	20-24	166	9.0	0.0	\$8,385	3.0	1.8
Women	25-34	291	15.8	0.0	\$13,729	3.2	1.7
Women	35-44	342	18.6	0.0	\$18,820	3.5	1.5
Women	45-54	455	24.7	0.0	\$21,628	3.6	1.4
Women	55-64	261	14.2	0.0	\$19,449	3.5	1.3
Women	65-Up	99	5.4	0.0	\$9,036	3.1	1.2
Women	N/A	12	0.7	0.0	\$16,005	2.8	1.1
Women	Total	1,840	100.0	45.8	\$15,449	3.3	1.5
Men	00-19	242	12.6	0.0	\$4,775	2.6	1.6
Men	20-24	226	11.8	0.0	\$17,282	3.1	1.9
Men	25-34	366	19.1	0.0	\$26,874	3.4	1.6
Men	35-44	330	17.2	0.0	\$32,970	3.5	1.5
Men	45-54	385	20.1	0.0	\$34,150	3.4	1.3
Men	55-64	249	13.0	0.0	\$34,108	3.5	1.2
Men	65-Up	110	5.7	0.0	\$16,673	3.1	1.2
Men	N/A	6	0.3	0.0	\$20,568	2.0	1.0
Men	Total	1,914	100.0	47.6	\$25,797	3.3	1.5
N/A	N/A	267	100.0	0.0	\$6,128	1.8	1.2
N/A	Total	267	100.0	6.6	\$6,128	1.8	1.2
Total	00-19	456	11.3	0.0	\$3,848	2.6	1.6
Total	20-24	392	9.7	0.0	\$13,514	3.1	1.9
Total	25-34	657	16.3	0.0	\$21,052	3.3	1.7
Total	35-44	672	16.7	0.0	\$25,769	3.5	1.5
Total	45-54	840	20.9	0.0	\$27,367	3.5	1.4
Total	55-64	510	12.7	0.0	\$26,606	3.5	1.2
Total	65-Up	209	5.2	0.0	\$13,055	3.1	1.2
Total	N/A	285	7.1	0.0	\$6,848	1.8	1.1
Total	Total	4,021	100.0	100.0	\$19,756	3.2	1.5

Note: Persons worked at any time during the year.

County Determination: Based on county of employment in which the person made the most money in the year.

N/A: Represents persons with demographic data that is unavailable.

Average Earnings by Age and Gender with Place of Work in Johnson County in 2006

Gender	Age Group	Number	Age Percent	Gender Percent	Average Annual Wage	Average Quarters Worked	Average Annual Employers
Women	00-19	236	12.6	0.0	\$3,267	2.6	1.8
Women	20-24	175	9.3	0.0	\$9,087	2.9	1.9
Women	25-34	296	15.8	0.0	\$17,601	3.4	1.7
Women	35-44	328	17.5	0.0	\$22,795	3.5	1.5
Women	45-54	450	24.0	0.0	\$24,396	3.5	1.4
Women	55-64	277	14.7	0.0	\$23,141	3.5	1.2
Women	65-Up	106	5.6	0.0	\$10,360	3.3	1.2
Women	N/A	10	0.5	0.0	\$21,873	3.2	1.1
Women	Total	1,878	100.0	43.9	\$17,973	3.3	1.5
Men	00-19	262	12.7	0.0	\$4,835	2.7	1.7
Men	20-24	267	12.9	0.0	\$20,572	3.1	1.9
Men	25-34	407	19.7	0.0	\$31,884	3.4	1.6
Men	35-44	344	16.7	0.0	\$38,686	3.5	1.4
Men	45-54	371	18.0	0.0	\$39,071	3.5	1.3
Men	55-64	291	14.1	0.0	\$38,467	3.5	1.2
Men	65-Up	121	5.9	0.0	\$21,173	3.1	1.2
Men	N/A	3	0.1	0.0	\$34,046	2.5	3.0
Men	Total	2,065	100.0	48.3	\$29,716	3.3	1.5
N/A	N/A	331	100.0	0.0	\$6,272	1.8	1.2
N/A	Total	331	100.0	7.7	\$6,272	1.8	1.2
Total	00-19	498	11.7	0.0	\$4,091	2.6	1.7
Total	20-24	442	10.3	0.0	\$16,025	3.0	1.9
Total	25-34	703	16.4	0.0	\$25,870	3.4	1.7
Total	35-44	672	15.7	0.0	\$30,930	3.5	1.4
Total	45-54	821	19.2	0.0	\$31,028	3.5	1.4
Total	55-64	568	13.3	0.0	\$30,993	3.5	1.2
Total	65-Up	227	5.3	0.0	\$16,124	3.2	1.2
Total	N/A	343	8.0	0.0	\$6,889	1.9	1.2
Total	Total	4,274	100.0	100.0	\$22,740	3.2	1.5

Note: Persons worked at any time during the year.

County Determination: Based on county of employment in which the person made the most money in the year.

N/A: Represents persons with demographic data that is unavailable.

Average Earnings by Age and Gender with Place of Work in Johnson County in 2007

Gender	Age Group	Number	Age Percent	Gender Percent	Average Annual Wage	Average Quarters Worked	Average Annual Employers
Women	00-19	222	11.4	0.0	\$3,425	2.6	1.7
Women	20-24	177	9.1	0.0	\$9,358	2.9	1.8
Women	25-34	334	17.2	0.0	\$19,323	3.4	1.7
Women	35-44	341	17.6	0.0	\$22,177	3.5	1.5
Women	45-54	451	23.3	0.0	\$24,013	3.6	1.4
Women	55-64	300	15.5	0.0	\$23,781	3.5	1.3
Women	65-Up	105	5.4	0.0	\$11,250	3.3	1.1
Women	N/A	9	0.5	0.0	\$19,273	3.0	1.4
Women	Total	1,939	100.0	42.8	\$18,438	3.3	1.5
Men	00-19	245	11.4	0.0	\$4,954	2.5	1.8
Men	20-24	242	11.2	0.0	\$18,663	2.9	1.8
Men	25-34	433	20.1	0.0	\$31,953	3.3	1.5
Men	35-44	378	17.5	0.0	\$40,345	3.4	1.4
Men	45-54	400	18.6	0.0	\$39,667	3.5	1.3
Men	55-64	318	14.7	0.0	\$38,683	3.4	1.2
Men	65-Up	140	6.5	0.0	\$22,401	3.2	1.1
Men	Total	2,156	100.0	47.6	\$30,668	3.2	1.4
N/A	N/A	433	100.0	0.0	\$6,251	1.7	1.2
N/A	Total	433	100.0	9.6	\$6,251	1.7	1.2
Total	00-19	467	10.3	0.0	\$4,227	2.6	1.7
Total	20-24	419	9.3	0.0	\$14,732	2.9	1.8
Total	25-34	767	16.9	0.0	\$26,453	3.4	1.6
Total	35-44	719	15.9	0.0	\$31,729	3.4	1.5
Total	45-54	851	18.8	0.0	\$31,371	3.5	1.4
Total	55-64	618	13.6	0.0	\$31,449	3.5	1.3
Total	65-Up	245	5.4	0.0	\$17,622	3.2	1.1
Total	N/A	442	9.8	0.0	\$6,516	1.7	1.2
Total	Total	4,528	100.0	100.0	\$23,096	3.1	1.5

Note: Persons worked at any time during the year.

County Determination: Based on county of employment in which the person made the most money in the year.

N/A: Represents persons with demographic data that is unavailable.

Average Earnings by Age and Gender with Place of Work in Johnson County in 2008

Gender	Age Group	Number	Age Percent	Gender Percent	Average Annual Wage	Average Quarters Worked	Average Annual Employers
Women	00-19	218	11.1	0.0	\$3,439	2.6	1.6
Women	20-24	184	9.4	0.0	\$10,672	3.0	1.8
Women	25-34	328	16.7	0.0	\$19,314	3.3	1.6
Women	35-44	355	18.1	0.0	\$23,361	3.5	1.5
Women	45-54	433	22.1	0.0	\$25,542	3.5	1.4
Women	55-64	312	15.9	0.0	\$26,428	3.6	1.2
Women	65-Up	125	6.4	0.0	\$11,646	3.3	1.2
Women	N/A	8	0.4	0.0	\$18,570	2.5	1.1
Women	Total	1,963	100.0	43.4	\$19,486	3.3	1.5
Men	00-19	244	11.4	0.0	\$4,916	2.4	1.5
Men	20-24	242	11.3	0.0	\$20,890	3.1	1.6
Men	25-34	423	19.8	0.0	\$36,509	3.4	1.5
Men	35-44	374	17.5	0.0	\$42,595	3.4	1.4
Men	45-54	388	18.1	0.0	\$43,246	3.6	1.3
Men	55-64	313	14.6	0.0	\$40,071	3.6	1.2
Men	65-Up	154	7.2	0.0	\$19,759	3.1	1.1
Men	Total	2,138	100.0	47.3	\$32,738	3.3	1.4
N/A	N/A	421	100.0	0.0	\$8,628	1.8	1.1
N/A	Total	421	100.0	9.3	\$8,628	1.8	1.1
Total	00-19	462	10.2	0.0	\$4,219	2.5	1.6
Total	20-24	426	9.4	0.0	\$16,477	3.1	1.7
Total	25-34	751	16.6	0.0	\$28,999	3.3	1.5
Total	35-44	729	16.1	0.0	\$33,229	3.5	1.4
Total	45-54	821	18.2	0.0	\$33,909	3.5	1.3
Total	55-64	625	13.8	0.0	\$33,261	3.6	1.2
Total	65-Up	279	6.2	0.0	\$16,124	3.2	1.1
Total	N/A	429	9.5	0.0	\$8,813	1.9	1.1
Total	Total	4,522	100.0	100.0	\$24,741	3.2	1.4

Note: Persons worked at any time during the year.

County Determination: Based on county of employment in which the person made the most money in the year.

N/A: Represents persons with demographic data that is unavailable.

Average Earnings by Age and Gender with Place of Work in Johnson County in 2009

Gender	Age Group	Number	Age Percent	Gender Percent	Average Annual Wage	Average Quarters Worked	Average Annual Employers
Women	00-19	198	10.2	0.0	\$3,065	2.5	1.5
Women	20-24	180	9.3	0.0	\$10,188	3.0	1.6
Women	25-34	330	17.1	0.0	\$18,409	3.4	1.6
Women	35-44	337	17.4	0.0	\$23,686	3.5	1.4
Women	45-54	413	21.4	0.0	\$25,854	3.6	1.3
Women	55-64	333	17.2	0.0	\$25,987	3.6	1.2
Women	65-Up	134	6.9	0.0	\$12,987	3.5	1.2
Women	N/A	7	0.4	0.0	\$14,443	2.7	1.1
Women	Total	1,932	100.0	45.3	\$19,498	3.4	1.4
Men	00-19	204	9.9	0.0	\$4,005	2.4	1.4
Men	20-24	241	11.6	0.0	\$13,379	2.7	1.5
Men	25-34	410	19.8	0.0	\$31,959	3.3	1.4
Men	35-44	354	17.1	0.0	\$39,145	3.4	1.3
Men	45-54	373	18.0	0.0	\$41,269	3.5	1.2
Men	55-64	338	16.3	0.0	\$34,686	3.4	1.2
Men	65-Up	149	7.2	0.0	\$18,285	3.3	1.1
Men	Total	2,069	100.0	48.5	\$29,407	3.2	1.3
N/A	N/A	267	100.0	0.0	\$8,289	1.9	1.1
N/A	Total	267	100.0	6.3	\$8,289	1.9	1.1
Total	00-19	402	9.4	0.0	\$3,542	2.5	1.4
Total	20-24	421	9.9	0.0	\$12,015	2.9	1.6
Total	25-34	740	17.3	0.0	\$25,916	3.3	1.5
Total	35-44	691	16.2	0.0	\$31,606	3.5	1.4
Total	45-54	786	18.4	0.0	\$33,169	3.6	1.3
Total	55-64	671	15.7	0.0	\$30,369	3.5	1.2
Total	65-Up	283	6.6	0.0	\$15,777	3.4	1.2
Total	N/A	274	6.4	0.0	\$8,446	1.9	1.1
Total	Total	4,268	100.0	100.0	\$23,601	3.2	1.3

Note: Persons worked at any time during the year.

County Determination: Based on county of employment in which the person made the most money in the year.

N/A: Represents persons with demographic data that is unavailable.

Average Earnings by Age and Gender with Place of Work in Johnson County in 2010

Gender	Age Group	Number	Age Percent	Gender Percent	Average Annual Wage	Average Quarters Worked	Average Annual Employers
Women	00-19	184	9.4	0.0	\$2,781	2.5	1.4
Women	20-24	203	10.3	0.0	\$9,299	2.9	1.7
Women	25-34	345	17.6	0.0	\$19,042	3.4	1.5
Women	35-44	335	17.0	0.0	\$24,056	3.5	1.5
Women	45-54	411	20.9	0.0	\$25,196	3.6	1.4
Women	55-64	352	17.9	0.0	\$27,502	3.6	1.2
Women	65-Up	130	6.6	0.0	\$13,381	3.5	1.2
Women	N/A	5	0.3	0.0	\$16,960	2.6	1.0
Women	Total	1,965	100.0	45.8	\$19,791	3.3	1.4
Men	00-19	182	9.1	0.0	\$4,547	2.6	1.4
Men	20-24	225	11.3	0.0	\$13,232	2.8	1.6
Men	25-34	381	19.1	0.0	\$31,298	3.2	1.5
Men	35-44	358	18.0	0.0	\$39,333	3.4	1.3
Men	45-54	368	18.5	0.0	\$41,351	3.4	1.3
Men	55-64	332	16.7	0.0	\$35,545	3.4	1.2
Men	65-Up	144	7.2	0.0	\$18,658	3.2	1.1
Men	N/A	3	0.1	0.0	\$7,365	1.5	1.5
Men	Total	1,992	100.0	46.5	\$29,885	3.2	1.4
N/A	N/A	329	100.0	0.0	\$8,812	1.9	1.1
N/A	Total	329	100.0	7.7	\$8,812	1.9	1.1
Total	00-19	366	8.5	0.0	\$3,659	2.6	1.4
Total	20-24	428	10.0	0.0	\$11,366	2.8	1.6
Total	25-34	726	16.9	0.0	\$25,474	3.3	1.5
Total	35-44	693	16.2	0.0	\$31,948	3.5	1.4
Total	45-54	779	18.2	0.0	\$32,828	3.5	1.3
Total	55-64	684	16.0	0.0	\$31,406	3.5	1.2
Total	65-Up	274	6.4	0.0	\$16,154	3.3	1.2
Total	N/A	336	7.8	0.0	\$8,925	1.9	1.1
Total	Total	4,286	100.0	100.0	\$23,639	3.2	1.4

Note: Persons worked at any time during the year.

County Determination: Based on county of employment in which the person made the most money in the year.

N/A: Represents persons with demographic data that is unavailable.

Average Earnings by Age and Gender with Place of Work in Johnson County in 2011

Gender	Age Group	Number	Age Percent	Gender Percent	Average Annual Wage	Average Quarters Worked	Average Annual Employers
Women	00-19	200	10.2	0.0	\$3,595	2.7	1.5
Women	20-24	200	10.2	0.0	\$10,392	3.0	1.7
Women	25-34	323	16.5	0.0	\$20,398	3.4	1.5
Women	35-44	343	17.5	0.0	\$23,631	3.4	1.5
Women	45-54	386	19.7	0.0	\$25,480	3.5	1.4
Women	55-64	373	19.1	0.0	\$26,551	3.5	1.2
Women	65-Up	131	6.7	0.0	\$12,654	3.2	1.2
Women	N/A	3	0.1	0.0	\$42,710	4.0	1.0
Women	Total	1,958	100.0	46.0	\$19,905	3.3	1.4
Men	00-19	181	9.1	0.0	\$3,973	2.6	1.4
Men	20-24	228	11.5	0.0	\$14,639	2.9	1.7
Men	25-34	382	19.3	0.0	\$32,664	3.3	1.5
Men	35-44	355	17.9	0.0	\$42,804	3.5	1.4
Men	45-54	357	18.0	0.0	\$44,687	3.5	1.3
Men	55-64	332	16.8	0.0	\$37,921	3.5	1.3
Men	65-Up	146	7.4	0.0	\$20,170	3.3	1.2
Men	N/A						
Men	Total	1,982	100.0	46.6	\$31,900	3.3	1.4
N/A	N/A	316	100.0	0.0	\$7,994	1.8	1.1
N/A	Total	316	100.0	7.4	\$7,994	1.8	1.1
Total	00-19	381	9.0	0.0	\$3,775	2.6	1.4
Total	20-24	428	10.1	0.0	\$12,655	3.0	1.7
Total	25-34	705	16.6	0.0	\$27,044	3.4	1.5
Total	35-44	698	16.4	0.0	\$33,382	3.4	1.4
Total	45-54	743	17.5	0.0	\$34,709	3.5	1.3
Total	55-64	705	16.6	0.0	\$31,905	3.5	1.2
Total	65-Up	277	6.5	0.0	\$16,616	3.3	1.2
Total	N/A	319	7.5	0.0	\$8,213	1.8	1.1
Total	Total	4,256	100.0	100.0	\$24,607	3.2	1.4

Note: Persons worked at any time during the year.

County Determination: Based on county of employment in which the person made the most money in the year.

N/A: Represents persons with demographic data that is unavailable.

Average Earnings by Age and Gender with Place of Work in Johnson County in 2012

Gender	Age Group	Number	Age Percent	Gender Percent	Average Annual Wage	Average Quarters Worked	Average Annual Employers
Women	00-19	193	9.8	0.0	\$3,100	2.5	1.5
Women	20-24	183	9.3	0.0	\$9,350	2.9	1.8
Women	25-34	355	18.0	0.0	\$22,154	3.4	1.6
Women	35-44	353	17.9	0.0	\$23,442	3.4	1.5
Women	45-54	380	19.3	0.0	\$27,381	3.6	1.4
Women	55-64	373	18.9	0.0	\$29,346	3.5	1.2
Women	65-Up	132	6.7	0.0	\$16,574	3.4	1.2
Women	N/A	3	0.2	0.0	\$30,958	3.3	1.0
Women	Total	1,972	100.0	44.5	\$21,339	3.3	1.4
Men	00-19	183	8.9	0.0	\$4,559	2.4	1.5
Men	20-24	218	10.6	0.0	\$16,218	2.9	1.7
Men	25-34	405	19.7	0.0	\$32,924	3.2	1.5
Men	35-44	382	18.6	0.0	\$44,997	3.4	1.4
Men	45-54	369	18.0	0.0	\$43,774	3.4	1.3
Men	55-64	332	16.2	0.0	\$39,587	3.5	1.3
Men	65-Up	161	7.8	0.0	\$20,860	3.3	1.2
Men	N/A						
Men	Total	2,051	100.0	46.3	\$32,934	3.2	1.4
N/A	N/A	411	100.0	0.0	\$9,418	1.8	1.1
N/A	Total	411	100.0	9.3	\$9,418	1.8	1.1
Total	00-19	376	8.5	0.0	\$3,810	2.5	1.5
Total	20-24	401	9.0	0.0	\$13,084	2.9	1.7
Total	25-34	760	17.1	0.0	\$27,893	3.3	1.5
Total	35-44	735	16.6	0.0	\$34,645	3.4	1.4
Total	45-54	749	16.9	0.0	\$35,457	3.5	1.4
Total	55-64	705	15.9	0.0	\$34,168	3.5	1.2
Total	65-Up	293	6.6	0.0	\$18,929	3.3	1.2
Total	N/A	415	9.4	0.0	\$9,555	1.8	1.1
Total	Total	4,434	100.0	100.0	\$25,598	3.1	1.4

Note: Persons worked at any time during the year.

County Determination: Based on county of employment in which the person made the most money in the year.

N/A: Represents persons with demographic data that is unavailable.

Average Earnings by Age and Gender with Place of Work in Johnson County in 2013

Gender	Age Group	Number	Age Percent	Gender Percent	Average Annual Wage	Average Quarters Worked	Average Annual Employers
Women	00-19	188	9.9	0.0	\$3,849	2.6	1.5
Women	20-24	159	8.4	0.0	\$9,704	2.9	1.8
Women	25-34	359	19.0	0.0	\$23,353	3.4	1.6
Women	35-44	318	16.8	0.0	\$25,357	3.5	1.5
Women	45-54	373	19.7	0.0	\$28,487	3.6	1.4
Women	55-64	346	18.3	0.0	\$29,036	3.6	1.2
Women	65-Up	146	7.7	0.0	\$16,406	3.3	1.2
Women	N/A	5	0.3	0.0	\$20,799	2.4	1.0
Women	Total	1,894	100.0	43.3	\$22,115	3.4	1.4
Men	00-19	182	8.9	0.0	\$4,419	2.5	1.4
Men	20-24	223	10.9	0.0	\$16,785	2.9	1.6
Men	25-34	417	20.3	0.0	\$33,473	3.3	1.5
Men	35-44	400	19.5	0.0	\$46,666	3.5	1.3
Men	45-54	352	17.1	0.0	\$47,612	3.6	1.3
Men	55-64	322	15.7	0.0	\$40,300	3.5	1.2
Men	65-Up	156	7.6	0.0	\$21,329	3.2	1.1
Men	N/A	3	0.1	0.0	\$30,630	2.3	1.3
Men	Total	2,055	100.0	47.0	\$34,222	3.3	1.3
N/A	N/A	425	100.0	0.0	\$9,645	1.8	1.1
N/A	Total	425	100.0	9.7	\$9,645	1.8	1.1
Total	00-19	370	8.5	0.0	\$4,130	2.6	1.5
Total	20-24	382	8.7	0.0	\$13,838	2.9	1.7
Total	25-34	776	17.7	0.0	\$28,791	3.4	1.5
Total	35-44	718	16.4	0.0	\$37,228	3.5	1.4
Total	45-54	725	16.6	0.0	\$37,773	3.6	1.3
Total	55-64	668	15.3	0.0	\$34,466	3.5	1.2
Total	65-Up	302	6.9	0.0	\$18,949	3.2	1.1
Total	N/A	433	9.9	0.0	\$9,920	1.8	1.1
Total	Total	4,374	100.0	100.0	\$26,592	3.2	1.4

Note: Persons worked at any time during the year.

County Determination: Based on county of employment in which the person made the most money in the year.

N/A: Represents persons with demographic data that is unavailable.

Average Earnings by Age and Gender with Place of Work in Johnson County in 2014

Gender	Age Group	Number	Age Percent	Gender Percent	Average Annual Wage	Average Quarters Worked	Average Annual Employers
Women	00-19	169	9.0	0.0	\$4,214	2.7	1.6
Women	20-24	162	8.7	0.0	\$10,560	2.9	1.7
Women	25-34	330	17.6	0.0	\$25,474	3.4	1.5
Women	35-44	333	17.8	0.0	\$25,641	3.5	1.5
Women	45-54	372	19.9	0.0	\$29,966	3.6	1.4
Women	55-64	358	19.1	0.0	\$28,413	3.5	1.3
Women	65-Up	143	7.6	0.0	\$18,287	3.3	1.1
Women	N/A	4	0.2	0.0	\$29,284	3.3	1.0
Women	Total	1,871	100.0	41.3	\$23,206	3.4	1.4
Men	00-19	165	8.4	0.0	\$5,328	2.5	1.5
Men	20-24	193	9.8	0.0	\$17,697	3.0	1.6
Men	25-34	404	20.5	0.0	\$34,986	3.3	1.5
Men	35-44	383	19.5	0.0	\$49,045	3.4	1.3
Men	45-54	343	17.4	0.0	\$49,909	3.5	1.2
Men	55-64	314	16.0	0.0	\$44,091	3.5	1.2
Men	65-Up	165	8.4	0.0	\$22,535	3.3	1.1
Men	N/A						
Men	Total	1,968	100.0	43.5	\$36,550	3.3	1.3
N/A	N/A	689	100.0	0.0	\$13,033	1.7	1.1
N/A	Total	689	100.0	15.2	\$13,033	1.7	1.1
Total	00-19	334	7.4	0.0	\$4,764	2.6	1.6
Total	20-24	355	7.8	0.0	\$14,440	3.0	1.7
Total	25-34	734	16.2	0.0	\$30,709	3.3	1.5
Total	35-44	716	15.8	0.0	\$38,160	3.4	1.4
Total	45-54	715	15.8	0.0	\$39,533	3.5	1.3
Total	55-64	672	14.8	0.0	\$35,739	3.5	1.2
Total	65-Up	308	6.8	0.0	\$20,563	3.3	1.1
Total	N/A	694	15.3	0.0	\$13,159	1.8	1.1
Total	Total	4,528	100.0	100.0	\$27,458	3.1	1.4

Note: Persons worked at any time during the year.

County Determination: Based on county of employment in which the person made the most money in the year.

N/A: Represents persons with demographic data that is unavailable.

Average Earnings by Age and Gender with Place of Work in Johnson County in 2015

Gender	Age Group	Number	Age Percent	Gender Percent	Average Annual Wage	Average Quarters Worked	Average Annual Employers
Women	00-19	177	9.5	0.0	\$4,478	2.6	1.5
Women	20-24	150	8.0	0.0	\$11,235	2.9	1.8
Women	25-34	347	18.6	0.0	\$24,204	3.4	1.5
Women	35-44	334	17.9	0.0	\$28,776	3.5	1.5
Women	45-54	375	20.1	0.0	\$30,427	3.6	1.4
Women	55-64	342	18.3	0.0	\$30,740	3.6	1.3
Women	65-Up	141	7.5	0.0	\$20,494	3.5	1.1
Women	N/A	3	0.2	0.0	\$37,053	3.0	1.0
Women	Total	1,869	100.0	47.2	\$24,297	3.4	1.4
Men	00-19	162	9.1	0.0	\$4,934	2.6	1.4
Men	20-24	182	10.3	0.0	\$15,716	3.0	1.6
Men	25-34	355	20.0	0.0	\$33,364	3.3	1.5
Men	35-44	322	18.2	0.0	\$50,025	3.5	1.4
Men	45-54	308	17.4	0.0	\$52,166	3.6	1.4
Men	55-64	288	16.2	0.0	\$44,951	3.5	1.2
Men	65-Up	157	8.9	0.0	\$22,124	3.3	1.1
Men	Total	1,774	100.0	44.8	\$36,132	3.3	1.4
N/A	N/A	319	100.0	0.0	\$8,900	1.9	1.1
N/A	Total	319	100.0	8.1	\$8,900	1.9	1.1
Total	00-19	339	8.6	0.0	\$4,696	2.6	1.5
Total	20-24	332	8.4	0.0	\$13,691	2.9	1.7
Total	25-34	702	17.7	0.0	\$28,836	3.4	1.5
Total	35-44	656	16.6	0.0	\$39,206	3.5	1.4
Total	45-54	683	17.2	0.0	\$40,230	3.6	1.4
Total	55-64	630	15.9	0.0	\$37,237	3.6	1.2
Total	65-Up	298	7.5	0.0	\$21,353	3.4	1.1
Total	N/A	322	8.1	0.0	\$9,162	1.9	1.1
Total	Total	3,962	100.0	100.0	\$28,357	3.2	1.4

Note: Persons worked at any time during the year.

County Determination: Based on county of employment in which the person made the most money in the year.

N/A: Represents persons with demographic data that is unavailable.

Average Earnings by Age and Gender with Place of Work in Johnson County in 2016

Gender	Age Group	Number	Age Percent	Gender Percent	Average Annual Wage	Average Quarters Worked	Average Annual Employers
Women	00-19	157	8.6	0.0	\$4,655	2.7	1.6
Women	20-24	153	8.3	0.0	\$11,806	3.1	1.7
Women	25-34	318	17.3	0.0	\$26,251	3.4	1.5
Women	35-44	349	19.0	0.0	\$28,637	3.6	1.5
Women	45-54	364	19.8	0.0	\$30,714	3.6	1.4
Women	55-64	324	17.6	0.0	\$32,194	3.6	1.2
Women	65-Up	168	9.2	0.0	\$19,678	3.4	1.2
Women	N/A	3	0.2	0.0	\$38,974	3.3	1.0
Women	Total	1,836	100.0	47.5	\$25,007	3.4	1.4
Men	00-19	168	9.8	0.0	\$4,667	2.6	1.5
Men	20-24	169	9.8	0.0	\$16,454	3.0	1.6
Men	25-34	320	18.6	0.0	\$31,794	3.4	1.5
Men	35-44	331	19.2	0.0	\$48,013	3.6	1.4
Men	45-54	304	17.7	0.0	\$48,057	3.5	1.3
Men	55-64	268	15.6	0.0	\$44,380	3.6	1.2
Men	65-Up	160	9.3	0.0	\$23,568	3.3	1.1
Men	Total	1,720	100.0	44.5	\$34,828	3.4	1.4
N/A	N/A	313	100.0	0.0	\$8,336	1.9	1.1
N/A	Total	313	100.0	8.1	\$8,336	1.9	1.1
Total	00-19	325	8.4	0.0	\$4,661	2.6	1.6
Total	20-24	322	8.3	0.0	\$14,245	3.0	1.6
Total	25-34	638	16.5	0.0	\$29,031	3.4	1.5
Total	35-44	680	17.6	0.0	\$38,068	3.6	1.4
Total	45-54	668	17.3	0.0	\$38,606	3.6	1.3
Total	55-64	592	15.3	0.0	\$37,710	3.6	1.2
Total	65-Up	328	8.5	0.0	\$21,575	3.3	1.1
Total	N/A	316	8.2	0.0	\$8,627	1.9	1.1
Total	Total	3,869	100.0	100.0	\$28,024	3.3	1.4

Note: Persons worked at any time during the year.

County Determination: Based on county of employment in which the person made the most money in the year.

N/A: Represents persons with demographic data that is unavailable.

Average Earnings by Age and Gender with Place of Work in Johnson County in 2017

Gender	Age Group	Number	Age Percent	Gender Percent	Average Annual Wage	Average Quarters Worked	Average Annual Employers
Women	00-19	149	8.4	0.0	\$4,058	2.7	1.6
Women	20-24	156	8.8	0.0	\$13,072	3.0	1.6
Women	25-34	297	16.8	0.0	\$25,712	3.5	1.5
Women	35-44	338	19.1	0.0	\$30,306	3.6	1.5
Women	45-54	334	18.9	0.0	\$31,144	3.7	1.4
Women	55-64	321	18.1	0.0	\$31,853	3.5	1.2
Women	65-Up	172	9.7	0.0	\$18,359	3.3	1.2
Women	N/A	3	0.1	0.0	\$59,095	4.0	1.5
Women	Total	1,769	100.0	45.6	\$25,114	3.4	1.4
Men	00-19	161	9.0	0.0	\$5,316	2.7	1.6
Men	20-24	159	8.9	0.0	\$18,947	3.1	1.7
Men	25-34	345	19.2	0.0	\$31,971	3.3	1.5
Men	35-44	352	19.6	0.0	\$48,468	3.6	1.4
Men	45-54	312	17.4	0.0	\$50,755	3.5	1.2
Men	55-64	302	16.8	0.0	\$44,351	3.4	1.2
Men	65-Up	161	9.0	0.0	\$24,669	3.4	1.1
Men	N/A						
Men	Total	1,793	100.0	46.2	\$36,343	3.3	1.4
N/A	N/A	318	100.0	0.0	\$7,998	1.9	1.1
N/A	Total	318	100.0	8.2	\$7,998	1.9	1.1
Total	00-19	310	8.0	0.0	\$4,711	2.7	1.6
Total	20-24	315	8.1	0.0	\$16,038	3.0	1.7
Total	25-34	642	16.5	0.0	\$29,075	3.4	1.5
Total	35-44	690	17.8	0.0	\$39,571	3.6	1.4
Total	45-54	646	16.6	0.0	\$40,615	3.6	1.3
Total	55-64	623	16.1	0.0	\$37,912	3.5	1.2
Total	65-Up	333	8.6	0.0	\$21,410	3.4	1.1
Total	N/A	321	8.3	0.0	\$8,300	1.9	1.1
Total	Total	3,880	100.0	100.0	\$28,900	3.3	1.4

Note: Persons worked at any time during the year.

County Determination: Based on county of employment in which the person made the most money in the year.

N/A: Represents persons with demographic data that is unavailable.

Average Earnings by Age and Gender with Place of Work in Johnson County in 2018

Gender	Age Group	Number	Age Percent	Gender Percent	Average Annual Wage	Average Quarters Worked	Average Annual Employers
Women	00-19	136	7.8	0.0	\$4,109	2.6	1.6
Women	20-24	134	7.7	0.0	\$14,303	3.1	1.7
Women	25-34	299	17.1	0.0	\$26,795	3.5	1.5
Women	35-44	340	19.4	0.0	\$30,629	3.6	1.5
Women	45-54	343	19.6	0.0	\$30,572	3.6	1.4
Women	55-64	318	18.2	0.0	\$30,252	3.6	1.2
Women	65-Up	178	10.2	0.0	\$21,399	3.4	1.2
Women	N/A	3	0.1	0.0	\$59,477	4.0	1.5
Women	Total	1,750	100.0	44.1	\$25,677	3.4	1.4
Men	00-19	143	7.8	0.0	\$5,801	2.6	1.5
Men	20-24	180	9.8	0.0	\$17,211	2.9	1.7
Men	25-34	356	19.4	0.0	\$34,592	3.3	1.4
Men	35-44	363	19.8	0.0	\$51,826	3.5	1.4
Men	45-54	297	16.2	0.0	\$53,555	3.5	1.3
Men	55-64	308	16.8	0.0	\$46,151	3.5	1.2
Men	65-Up	185	10.1	0.0	\$29,745	3.3	1.1
Men	N/A						
Men	Total	1,833	100.0	46.2	\$38,559	3.3	1.4
N/A	N/A	387	100.0	0.0	\$8,177	2.0	1.2
N/A	Total	387	100.0	9.7	\$8,177	2.0	1.2
Total	00-19	279	7.0	0.0	\$4,976	2.6	1.6
Total	20-24	314	7.9	0.0	\$15,970	3.0	1.7
Total	25-34	655	16.5	0.0	\$31,033	3.4	1.5
Total	35-44	703	17.7	0.0	\$41,574	3.5	1.4
Total	45-54	640	16.1	0.0	\$41,238	3.5	1.4
Total	55-64	626	15.8	0.0	\$38,074	3.5	1.2
Total	65-Up	363	9.1	0.0	\$25,652	3.3	1.1
Total	N/A	390	9.8	0.0	\$8,422	2.0	1.2
Total	Total	3,970	100.0	100.0	\$29,919	3.2	1.4

Note: Persons worked at any time during the year.

County Determination: Based on county of employment in which the person made the most money in the year.

N/A: Represents persons with demographic data that is unavailable.