

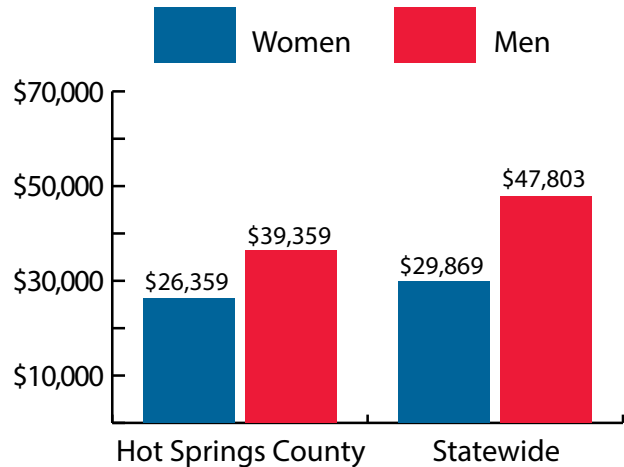
Hot Springs County at a Glance, 2018

Demographics of Persons Working in Wyoming by County, Industry, Age, & Gender, 2000-2018

Table: Total Number of Persons Working in Hot Springs County, WY, at Any Time by Gender and Age, 2017-2018

Gender	2017	2018	Change	
			N	%
Women	1,144	1,119	-25	-2.2
Men	1,087	1,053	-34	-3.1
Nonresidents	147	158	11	7.5
Total	2,378	2,330	-48	-2.0

Age	2017	2018	Change	
			N	%
00-19	178	176	-2	-1.1
20-24	159	163	4	2.5
25-34	459	414	-45	-9.8
35-44	408	413	5	1.2
45-54	367	364	-3	-0.8
55-64	441	411	-30	-6.8
65-Up	216	226	10	4.6
Nonresidents	150	163	13	8.7
Total	2,378	2,330	-48	-2.0



Women's Wages as % of Men's Wages

Hot Springs County: 67.0%

Total, Statewide: 62.5%

Figure: Average Annual Wages by Gender, 2018

Total = 2,330

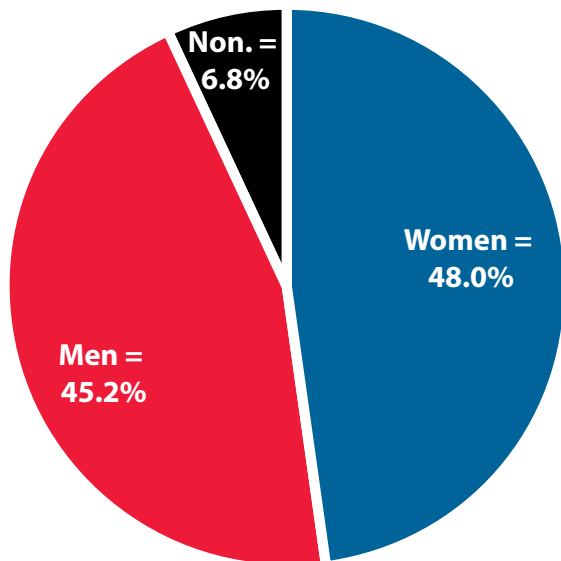


Figure: Persons Working by Gender, 2018

Total = 2,330

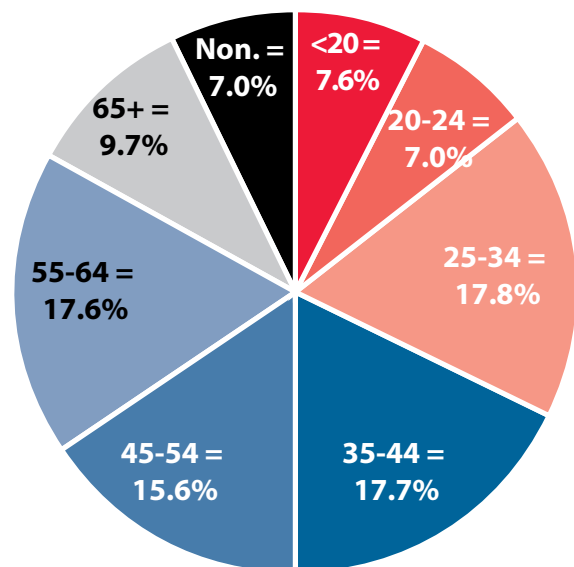


Figure: Persons Working by Age, 2018

Note: Nonresidents are individuals for whom demographic data are not available.

Source: Demographics of Persons Working in Wyoming by County, Industry, Age, & Gender, 2000-2018. Research & Planning, Wyoming Department of Workforce Services. Prepared by M. Moore, Research & Planning, WY DWS, 7/31/19.

Persons Working in Hot Springs County by Gender and Age, 2000-2018

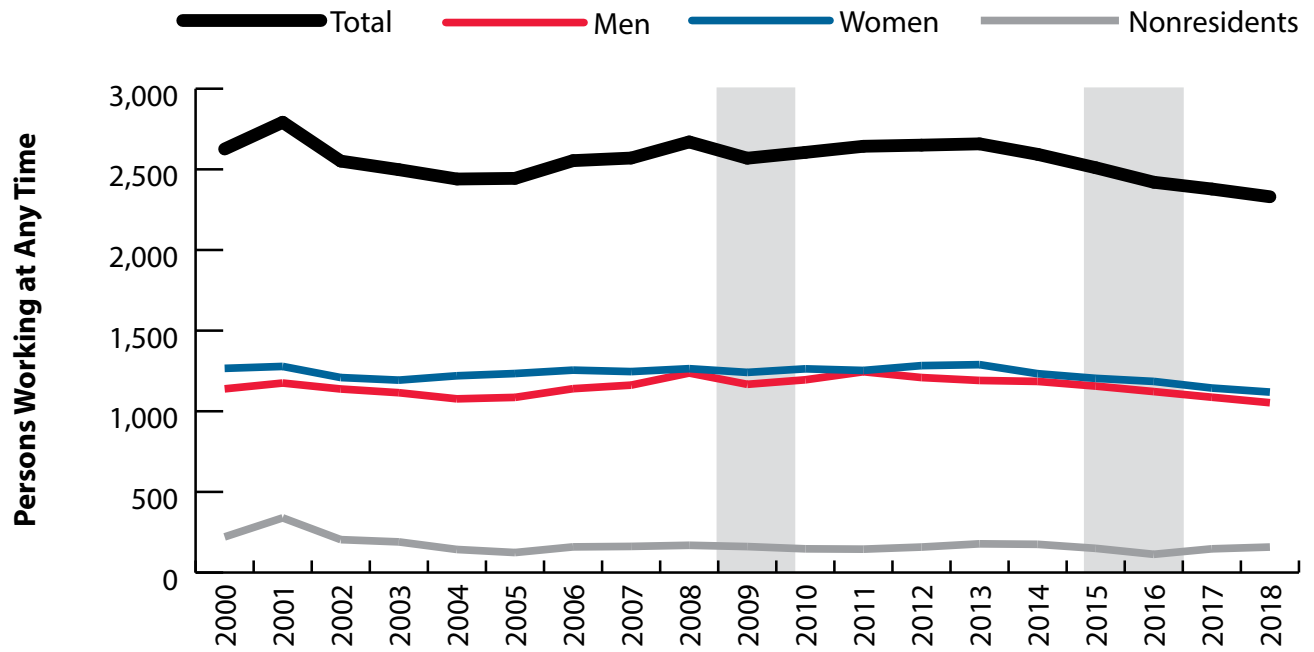


Figure: Persons Working in Hot Springs County at Any Time by Gender, 2000-2018

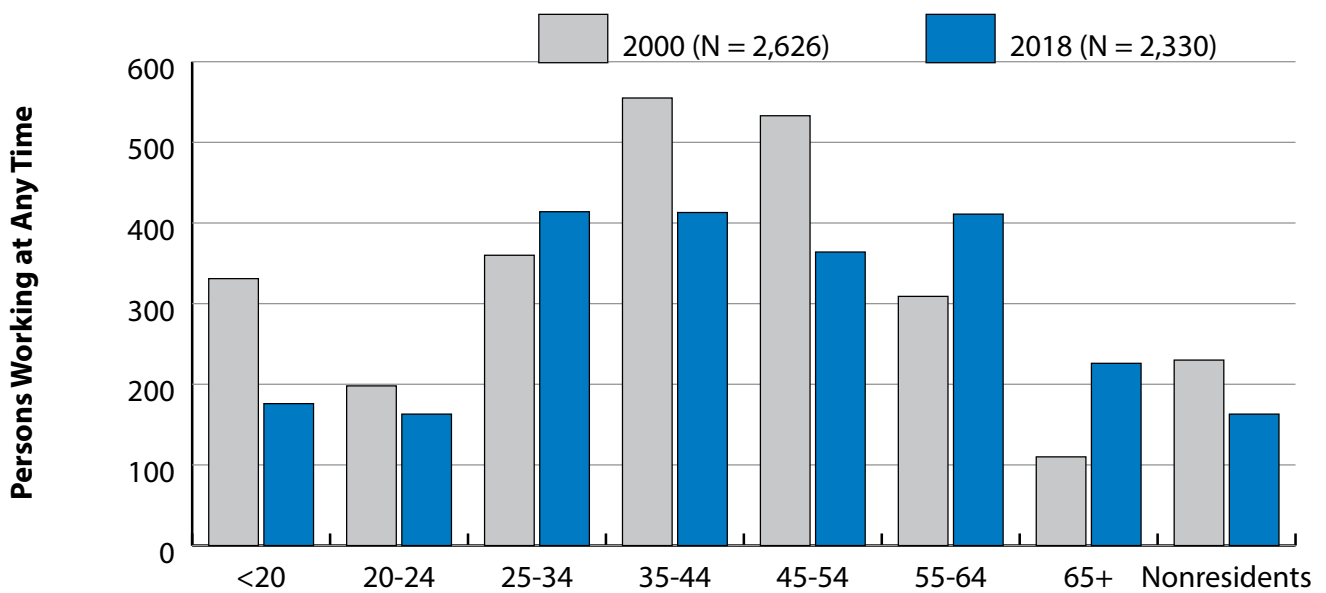


Figure: Persons Working in Hot Springs County at Any Time by Age, 2000-2018

Note: Nonresidents are individuals for whom demographic data are not available.
 Shaded areas indicate periods of economic downturn: 2009Q1-2010Q1 and 2015Q2-2016Q4.
 Source: Demographics of Persons Working in Wyoming by County, Industry, Age, & Gender, 2000-2018. Research & Planning, Wyoming Department of Workforce Services. Prepared by M. Moore, Research & Planning, WY DWS, 7/31/19.

Average Earnings by Age and Gender with Place of Work in Hot Springs County in 2000

Gender	Age Group	Number	Age Percent	Gender Percent	Average Annual Wage	Average Quarters Worked	Average Annual Employers
Women	00-19	168	13.3	0.0	\$2,470	2.6	1.6
Women	20-24	95	7.5	0.0	\$5,941	3.0	2.1
Women	25-34	191	15.1	0.0	\$12,440	3.3	1.7
Women	35-44	299	23.6	0.0	\$14,769	3.5	1.5
Women	45-54	291	23.0	0.0	\$18,623	3.5	1.4
Women	55-64	162	12.8	0.0	\$15,195	3.5	1.3
Women	65-Up	55	4.3	0.0	\$7,128	3.0	1.1
Women	N/A	5	0.4	0.0	\$5,292	2.6	2.0
Women	Total	1,266	100.0	48.2	\$12,694	3.3	1.5
Men	00-19	163	14.3	0.0	\$2,106	2.3	1.4
Men	20-24	103	9.0	0.0	\$8,765	2.8	1.8
Men	25-34	169	14.8	0.0	\$18,504	3.2	1.5
Men	35-44	256	22.5	0.0	\$25,994	3.5	1.3
Men	45-54	242	21.2	0.0	\$28,614	3.5	1.3
Men	55-64	147	12.9	0.0	\$26,833	3.4	1.2
Men	65-Up	55	4.8	0.0	\$17,511	3.0	1.1
Men	N/A	4	0.4	0.0	\$9,754	1.5	1.0
Men	Total	1,139	100.0	43.4	\$20,104	3.2	1.4
N/A	N/A	221	100.0	0.0	\$4,081	1.7	1.1
N/A	Total	221	100.0	8.4	\$4,081	1.7	1.1
Total	00-19	331	12.6	0.0	\$2,291	2.5	1.5
Total	20-24	198	7.5	0.0	\$7,410	2.9	1.9
Total	25-34	360	13.7	0.0	\$15,287	3.3	1.6
Total	35-44	555	21.1	0.0	\$19,947	3.5	1.4
Total	45-54	533	20.3	0.0	\$23,159	3.5	1.4
Total	55-64	309	11.8	0.0	\$20,732	3.4	1.2
Total	65-Up	110	4.2	0.0	\$12,319	3.0	1.1
Total	N/A	230	8.8	0.0	\$4,206	1.8	1.1
Total	Total	2,626	100.0	100.0	\$15,183	3.1	1.4

Note: Persons worked at any time during the year.

County Determination: Based on county of employment in which the person made the most money in the year.

N/A: Represents persons with demographic data that is unavailable.

N/A = Nonresidents, individuals for whom demographic data are not available.

Source: Demographics of Persons Working in Wyoming by County, Industry, Age, & Gender, 2000-2018.

Research & Planning, Wyoming Department of Workforce Services.

Prepared by M. Moore, Research & Planning, WY DWS, 7/31/19.

Average Earnings by Age and Gender with Place of Work in Hot Springs County in 2001

Gender	Age Group	Number	Age Percent	Gender Percent	Average Annual Wage	Average Quarters Worked	Average Annual Employers
Women	00-19	155	12.1	0.0	\$2,572	2.6	1.5
Women	20-24	113	8.8	0.0	\$6,235	2.9	2.1
Women	25-34	191	14.9	0.0	\$13,477	3.3	1.8
Women	35-44	280	21.9	0.0	\$15,218	3.4	1.5
Women	45-54	313	24.5	0.0	\$20,167	3.5	1.4
Women	55-64	165	12.9	0.0	\$14,859	3.4	1.4
Women	65-Up	55	4.3	0.0	\$11,019	2.9	1.1
Women	N/A	6	0.5	0.0	\$8,327	2.0	1.0
Women	Total	1,278	100.0	45.8	\$13,582	3.3	1.6
Men	00-19	174	14.8	0.0	\$2,703	2.5	1.5
Men	20-24	102	8.7	0.0	\$9,962	2.8	1.8
Men	25-34	194	16.5	0.0	\$18,626	3.1	1.5
Men	35-44	241	20.5	0.0	\$28,302	3.4	1.4
Men	45-54	251	21.4	0.0	\$29,409	3.4	1.4
Men	55-64	152	12.9	0.0	\$30,101	3.3	1.3
Men	65-Up	59	5.0	0.0	\$18,037	2.9	1.2
Men	N/A	3	0.2	0.0	\$974	1.0	1.0
Men	Total	1,175	100.0	42.1	\$21,229	3.1	1.4
N/A	N/A	339	100.0	0.0	\$4,552	1.4	1.1
N/A	Total	339	100.0	12.1	\$4,552	1.4	1.1
Total	00-19	329	11.8	0.0	\$2,641	2.6	1.5
Total	20-24	215	7.7	0.0	\$8,003	2.8	1.9
Total	25-34	385	13.8	0.0	\$16,072	3.2	1.6
Total	35-44	521	18.7	0.0	\$21,270	3.4	1.5
Total	45-54	564	20.2	0.0	\$24,280	3.5	1.4
Total	55-64	317	11.4	0.0	\$22,167	3.4	1.3
Total	65-Up	114	4.1	0.0	\$14,651	2.9	1.1
Total	N/A	347	12.4	0.0	\$4,597	1.4	1.1
Total	Total	2,792	100.0	100.0	\$15,704	3.0	1.4

Note: Persons worked at any time during the year.

County Determination: Based on county of employment in which the person made the most money in the year.

N/A: Represents persons with demographic data that is unavailable.

N/A = Nonresidents, individuals for whom demographic data are not available.

Source: Demographics of Persons Working in Wyoming by County, Industry, Age, & Gender, 2000-2018.

Research & Planning, Wyoming Department of Workforce Services.

Prepared by M. Moore, Research & Planning, WY DWS, 7/31/19.

Average Earnings by Age and Gender with Place of Work in Hot Springs County in 2002

Gender	Age Group	Number	Age Percent	Gender Percent	Average Annual Wage	Average Quarters Worked	Average Annual Employers
Women	00-19	144	11.9	0.0	\$3,157	2.7	1.6
Women	20-24	98	8.1	0.0	\$7,035	2.9	1.7
Women	25-34	182	15.1	0.0	\$14,565	3.3	1.6
Women	35-44	244	20.2	0.0	\$17,565	3.5	1.4
Women	45-54	307	25.4	0.0	\$20,309	3.5	1.4
Women	55-64	176	14.6	0.0	\$16,915	3.4	1.2
Women	65-Up	52	4.3	0.0	\$9,855	2.9	1.0
Women	N/A	6	0.5	0.0	\$1,766	2.0	1.5
Women	Total	1,209	100.0	47.4	\$14,736	3.3	1.4
Men	00-19	158	13.9	0.0	\$2,854	2.8	1.5
Men	20-24	112	9.8	0.0	\$8,155	2.7	1.8
Men	25-34	184	16.2	0.0	\$18,911	3.1	1.5
Men	35-44	240	21.1	0.0	\$28,401	3.4	1.3
Men	45-54	231	20.3	0.0	\$29,266	3.4	1.2
Men	55-64	149	13.1	0.0	\$29,245	3.3	1.3
Men	65-Up	62	5.4	0.0	\$14,552	3.1	1.1
Men	N/A	3	0.2	0.0	\$333	1.5	1.0
Men	Total	1,138	100.0	44.6	\$20,809	3.2	1.4
N/A	N/A	204	100.0	0.0	\$4,429	1.7	1.0
N/A	Total	204	100.0	8.0	\$4,429	1.7	1.0
Total	00-19	302	11.8	0.0	\$2,999	2.8	1.5
Total	20-24	210	8.2	0.0	\$7,632	2.8	1.7
Total	25-34	366	14.3	0.0	\$16,750	3.2	1.5
Total	35-44	484	19.0	0.0	\$22,938	3.5	1.3
Total	45-54	538	21.1	0.0	\$24,155	3.5	1.3
Total	55-64	325	12.7	0.0	\$22,568	3.4	1.2
Total	65-Up	114	4.5	0.0	\$12,410	3.0	1.1
Total	N/A	212	8.3	0.0	\$4,315	1.7	1.1
Total	Total	2,551	100.0	100.0	\$16,621	3.1	1.4

Note: Persons worked at any time during the year.

County Determination: Based on county of employment in which the person made the most money in the year.

N/A: Represents persons with demographic data that is unavailable.

N/A = Nonresidents, individuals for whom demographic data are not available.

Source: Demographics of Persons Working in Wyoming by County, Industry, Age, & Gender, 2000-2018.

Research & Planning, Wyoming Department of Workforce Services.

Prepared by M. Moore, Research & Planning, WY DWS, 7/31/19.

Average Earnings by Age and Gender with Place of Work in Hot Springs County in 2003

Gender	Age Group	Number	Age Percent	Gender Percent	Average Annual Wage	Average Quarters Worked	Average Annual Employers
Women	00-19	135	11.3	0.0	\$2,712	2.8	1.6
Women	20-24	103	8.6	0.0	\$7,765	3.0	1.9
Women	25-34	171	14.3	0.0	\$14,409	3.3	1.7
Women	35-44	238	19.9	0.0	\$18,164	3.6	1.5
Women	45-54	300	25.1	0.0	\$21,396	3.6	1.4
Women	55-64	192	16.1	0.0	\$17,084	3.4	1.2
Women	65-Up	51	4.3	0.0	\$12,423	3.2	1.2
Women	N/A	3	0.3	0.0	\$3,310	2.0	1.7
Women	Total	1,193	100.0	47.8	\$15,335	3.4	1.5
Men	00-19	156	14.0	0.0	\$2,783	2.7	1.6
Men	20-24	104	9.3	0.0	\$9,292	3.0	2.0
Men	25-34	161	14.4	0.0	\$20,766	3.2	1.5
Men	35-44	238	21.3	0.0	\$27,955	3.4	1.3
Men	45-54	231	20.7	0.0	\$33,533	3.5	1.3
Men	55-64	160	14.3	0.0	\$29,814	3.5	1.2
Men	65-Up	64	5.7	0.0	\$14,971	3.2	1.3
Men	N/A						
Men	Total	1,115	100.0	44.6	\$22,313	3.3	1.4
N/A	N/A	190	100.0	0.0	\$5,365	1.7	1.0
N/A	Total	190	100.0	7.6	\$5,365	1.7	1.0
Total	00-19	291	11.6	0.0	\$2,750	2.7	1.6
Total	20-24	207	8.3	0.0	\$8,532	3.0	2.0
Total	25-34	332	13.3	0.0	\$17,492	3.3	1.6
Total	35-44	476	19.1	0.0	\$23,060	3.5	1.4
Total	45-54	531	21.3	0.0	\$26,676	3.6	1.3
Total	55-64	352	14.1	0.0	\$22,870	3.4	1.2
Total	65-Up	115	4.6	0.0	\$13,841	3.2	1.2
Total	N/A	194	7.8	0.0	\$5,340	1.7	1.0
Total	Total	2,498	100.0	100.0	\$17,691	3.2	1.4

Note: Persons worked at any time during the year.

County Determination: Based on county of employment in which the person made the most money in the year.

N/A: Represents persons with demographic data that is unavailable.

N/A = Nonresidents, individuals for whom demographic data are not available.

Source: Demographics of Persons Working in Wyoming by County, Industry, Age, & Gender, 2000-2018.

Research & Planning, Wyoming Department of Workforce Services.

Prepared by M. Moore, Research & Planning, WY DWS, 7/31/19.

Average Earnings by Age and Gender with Place of Work in Hot Springs County in 2004

Gender	Age Group	Number	Age Percent	Gender Percent	Average Annual Wage	Average Quarters Worked	Average Annual Employers
Women	00-19	143	11.7	0.0	\$2,877	2.7	1.6
Women	20-24	111	9.1	0.0	\$8,043	3.1	1.8
Women	25-34	169	13.9	0.0	\$13,805	3.3	1.6
Women	35-44	233	19.1	0.0	\$18,015	3.5	1.5
Women	45-54	304	24.9	0.0	\$23,762	3.7	1.3
Women	55-64	189	15.5	0.0	\$18,219	3.6	1.3
Women	65-Up	69	5.7	0.0	\$13,037	3.1	1.1
Women	N/A	3	0.2	0.0	\$6,884	2.5	1.5
Women	Total	1,220	100.0	50.0	\$15,914	3.4	1.5
Men	00-19	140	13.0	0.0	\$3,342	2.8	1.6
Men	20-24	112	10.4	0.0	\$12,524	3.0	1.9
Men	25-34	162	15.0	0.0	\$19,332	3.2	1.7
Men	35-44	192	17.8	0.0	\$33,715	3.6	1.3
Men	45-54	220	20.4	0.0	\$38,605	3.6	1.2
Men	55-64	177	16.4	0.0	\$27,914	3.5	1.3
Men	65-Up	73	6.8	0.0	\$19,447	3.0	1.3
Men	N/A						
Men	Total	1,077	100.0	44.1	\$24,448	3.3	1.4
N/A	N/A	143	100.0	0.0	\$5,506	1.9	1.1
N/A	Total	143	100.0	5.9	\$5,506	1.9	1.1
Total	00-19	283	11.6	0.0	\$3,107	2.7	1.6
Total	20-24	223	9.1	0.0	\$10,293	3.0	1.9
Total	25-34	331	13.6	0.0	\$16,510	3.2	1.7
Total	35-44	425	17.4	0.0	\$25,108	3.5	1.4
Total	45-54	524	21.5	0.0	\$29,994	3.7	1.3
Total	55-64	366	15.0	0.0	\$22,907	3.6	1.3
Total	65-Up	142	5.8	0.0	\$16,332	3.0	1.2
Total	N/A	146	6.0	0.0	\$5,498	1.9	1.1
Total	Total	2,440	100.0	100.0	\$19,071	3.3	1.4

Note: Persons worked at any time during the year.

County Determination: Based on county of employment in which the person made the most money in the year.

N/A: Represents persons with demographic data that is unavailable.

N/A = Nonresidents, individuals for whom demographic data are not available.

Source: Demographics of Persons Working in Wyoming by County, Industry, Age, & Gender, 2000-2018.

Research & Planning, Wyoming Department of Workforce Services.

Prepared by M. Moore, Research & Planning, WY DWS, 7/31/19.

Average Earnings by Age and Gender with Place of Work in Hot Springs County in 2005

Gender	Age Group	Number	Age Percent	Gender Percent	Average Annual Wage	Average Quarters Worked	Average Annual Employers
Women	00-19	142	11.5	0.0	\$3,119	2.7	1.6
Women	20-24	104	8.4	0.0	\$8,023	2.9	1.9
Women	25-34	175	14.2	0.0	\$15,670	3.4	1.7
Women	35-44	207	16.8	0.0	\$18,855	3.5	1.4
Women	45-54	318	25.8	0.0	\$22,639	3.6	1.4
Women	55-64	213	17.3	0.0	\$20,265	3.6	1.3
Women	65-Up	73	5.9	0.0	\$9,557	3.4	1.1
Women	N/A	3	0.2	0.0	\$6,337	3.0	1.5
Women	Total	1,234	100.0	50.5	\$16,328	3.4	1.5
Men	00-19	123	11.3	0.0	\$3,680	2.7	1.6
Men	20-24	121	11.1	0.0	\$16,421	3.2	1.8
Men	25-34	146	13.4	0.0	\$23,364	3.4	1.6
Men	35-44	202	18.6	0.0	\$36,506	3.6	1.5
Men	45-54	237	21.8	0.0	\$37,067	3.6	1.3
Men	55-64	187	17.2	0.0	\$31,411	3.5	1.3
Men	65-Up	66	6.1	0.0	\$16,430	3.4	1.2
Men	N/A	4	0.4	0.0	\$7,336	2.3	1.5
Men	Total	1,086	100.0	44.4	\$26,701	3.4	1.5
N/A	N/A	124	100.0	0.0	\$6,899	2.3	1.1
N/A	Total	124	100.0	5.1	\$6,899	2.3	1.1
Total	00-19	265	10.8	0.0	\$3,379	2.7	1.6
Total	20-24	225	9.2	0.0	\$12,539	3.1	1.8
Total	25-34	321	13.1	0.0	\$19,169	3.4	1.7
Total	35-44	409	16.7	0.0	\$27,573	3.6	1.5
Total	45-54	555	22.7	0.0	\$28,800	3.6	1.4
Total	55-64	400	16.4	0.0	\$25,476	3.5	1.3
Total	65-Up	139	5.7	0.0	\$12,820	3.4	1.2
Total	N/A	130	5.3	0.0	\$6,903	2.3	1.1
Total	Total	2,444	100.0	100.0	\$20,459	3.3	1.5

Note: Persons worked at any time during the year.

County Determination: Based on county of employment in which the person made the most money in the year.

N/A: Represents persons with demographic data that is unavailable.

N/A = Nonresidents, individuals for whom demographic data are not available.

Source: Demographics of Persons Working in Wyoming by County, Industry, Age, & Gender, 2000-2018.

Research & Planning, Wyoming Department of Workforce Services.

Prepared by M. Moore, Research & Planning, WY DWS, 7/31/19.

Average Earnings by Age and Gender with Place of Work in Hot Springs County in 2006

Gender	Age Group	Number	Age Percent	Gender Percent	Average Annual Wage	Average Quarters Worked	Average Annual Employers
Women	00-19	126	10.0	0.0	\$2,896	2.7	1.7
Women	20-24	108	8.6	0.0	\$8,222	3.1	2.1
Women	25-34	198	15.8	0.0	\$15,134	3.2	1.7
Women	35-44	208	16.6	0.0	\$20,343	3.6	1.6
Women	45-54	300	23.9	0.0	\$25,138	3.7	1.4
Women	55-64	225	17.9	0.0	\$20,874	3.5	1.3
Women	65-Up	90	7.2	0.0	\$10,414	3.3	1.2
Women	Total	1,255	100.0	49.1	\$17,256	3.4	1.5
Men	00-19	112	9.8	0.0	\$3,288	2.6	1.5
Men	20-24	122	10.7	0.0	\$17,362	3.0	1.6
Men	25-34	191	16.8	0.0	\$27,880	3.4	1.7
Men	35-44	189	16.6	0.0	\$36,578	3.5	1.4
Men	45-54	256	22.5	0.0	\$40,067	3.6	1.2
Men	55-64	191	16.8	0.0	\$33,205	3.5	1.3
Men	65-Up	77	6.8	0.0	\$16,502	3.3	1.2
Men	N/A	3	0.2	0.0	\$7,631	3.0	1.0
Men	Total	1,140	100.0	44.6	\$28,605	3.3	1.4
N/A	N/A	159	100.0	0.0	\$7,528	2.2	1.0
N/A	Total	159	100.0	6.2	\$7,528	2.2	1.0
Total	00-19	238	9.3	0.0	\$3,080	2.6	1.6
Total	20-24	230	9.0	0.0	\$13,070	3.0	1.8
Total	25-34	389	15.2	0.0	\$21,393	3.3	1.7
Total	35-44	397	15.5	0.0	\$28,072	3.5	1.5
Total	45-54	556	21.8	0.0	\$32,012	3.6	1.3
Total	55-64	416	16.3	0.0	\$26,536	3.5	1.3
Total	65-Up	167	6.5	0.0	\$13,221	3.3	1.2
Total	N/A	161	6.3	0.0	\$7,529	2.2	1.0
Total	Total	2,554	100.0	100.0	\$21,716	3.3	1.5

Note: Persons worked at any time during the year.

County Determination: Based on county of employment in which the person made the most money in the year.

N/A: Represents persons with demographic data that is unavailable.

N/A = Nonresidents, individuals for whom demographic data are not available.

Source: Demographics of Persons Working in Wyoming by County, Industry, Age, & Gender, 2000-2018.

Research & Planning, Wyoming Department of Workforce Services.

Prepared by M. Moore, Research & Planning, WY DWS, 7/31/19.

Average Earnings by Age and Gender with Place of Work in Hot Springs County in 2007

Gender	Age Group	Number	Age Percent	Gender Percent	Average Annual Wage	Average Quarters Worked	Average Annual Employers
Women	00-19	131	10.5	0.0	\$2,851	2.6	1.7
Women	20-24	99	7.9	0.0	\$11,155	3.2	2.0
Women	25-34	184	14.8	0.0	\$15,621	3.2	1.6
Women	35-44	202	16.2	0.0	\$22,596	3.6	1.6
Women	45-54	302	24.2	0.0	\$26,310	3.5	1.3
Women	55-64	234	18.8	0.0	\$23,493	3.6	1.3
Women	65-Up	93	7.5	0.0	\$10,682	3.4	1.2
Women	N/A						
Women	Total	1,246	100.0	48.5	\$18,745	3.4	1.5
Men	00-19	120	10.3	0.0	\$3,870	2.5	1.5
Men	20-24	134	11.5	0.0	\$20,560	3.1	1.8
Men	25-34	195	16.8	0.0	\$31,768	3.4	1.7
Men	35-44	189	16.3	0.0	\$42,249	3.6	1.3
Men	45-54	233	20.1	0.0	\$40,598	3.6	1.3
Men	55-64	201	17.3	0.0	\$35,244	3.5	1.2
Men	65-Up	90	7.7	0.0	\$19,380	3.2	1.3
Men	Total	1,162	100.0	45.2	\$30,712	3.4	1.4
N/A	N/A	162	100.0	0.0	\$9,829	2.4	1.1
N/A	Total	162	100.0	6.3	\$9,829	2.4	1.1
Total	00-19	251	9.8	0.0	\$3,338	2.6	1.6
Total	20-24	233	9.1	0.0	\$16,564	3.2	1.9
Total	25-34	379	14.7	0.0	\$23,929	3.3	1.6
Total	35-44	391	15.2	0.0	\$32,096	3.6	1.4
Total	45-54	535	20.8	0.0	\$32,533	3.6	1.3
Total	55-64	435	16.9	0.0	\$28,923	3.6	1.2
Total	65-Up	183	7.1	0.0	\$14,960	3.3	1.2
Total	N/A	163	6.3	0.0	\$9,791	2.4	1.1
Total	Total	2,570	100.0	100.0	\$23,594	3.3	1.4

Note: Persons worked at any time during the year.

County Determination: Based on county of employment in which the person made the most money in the year.

N/A: Represents persons with demographic data that is unavailable.

N/A = Nonresidents, individuals for whom demographic data are not available.

Source: Demographics of Persons Working in Wyoming by County, Industry, Age, & Gender, 2000-2018.
Research & Planning, Wyoming Department of Workforce Services.

Prepared by M. Moore, Research & Planning, WY DWS, 7/31/19.

Average Earnings by Age and Gender with Place of Work in Hot Springs County in 2008

Gender	Age Group	Number	Age Percent	Gender Percent	Average Annual Wage	Average Quarters Worked	Average Annual Employers
Women	00-19	111	8.8	0.0	\$3,194	2.7	1.7
Women	20-24	106	8.4	0.0	\$11,706	3.2	1.8
Women	25-34	179	14.2	0.0	\$17,146	3.4	1.8
Women	35-44	209	16.5	0.0	\$26,184	3.6	1.4
Women	45-54	315	24.9	0.0	\$26,190	3.6	1.4
Women	55-64	249	19.7	0.0	\$25,247	3.6	1.3
Women	65-Up	95	7.5	0.0	\$11,497	3.5	1.2
Women	Total	1,264	100.0	47.3	\$20,384	3.4	1.5
Men	00-19	121	9.8	0.0	\$3,975	2.7	1.4
Men	20-24	114	9.2	0.0	\$21,290	3.1	1.8
Men	25-34	220	17.8	0.0	\$34,766	3.4	1.6
Men	35-44	199	16.1	0.0	\$41,923	3.5	1.3
Men	45-54	263	21.3	0.0	\$42,245	3.6	1.3
Men	55-64	214	17.3	0.0	\$37,832	3.5	1.2
Men	65-Up	106	8.6	0.0	\$23,436	3.2	1.3
Men	Total	1,237	100.0	46.3	\$32,813	3.4	1.4
N/A	N/A	169	100.0	0.0	\$10,153	2.3	1.1
N/A	Total	169	100.0	6.3	\$10,153	2.3	1.1
Total	00-19	232	8.7	0.0	\$3,601	2.7	1.6
Total	20-24	220	8.2	0.0	\$16,672	3.1	1.8
Total	25-34	399	14.9	0.0	\$26,861	3.4	1.7
Total	35-44	408	15.3	0.0	\$33,861	3.5	1.4
Total	45-54	578	21.6	0.0	\$33,495	3.6	1.3
Total	55-64	463	17.3	0.0	\$31,064	3.6	1.2
Total	65-Up	201	7.5	0.0	\$17,793	3.3	1.2
Total	N/A	169	6.3	0.0	\$10,153	2.3	1.1
Total	Total	2,670	100.0	100.0	\$25,495	3.3	1.4

Note: Persons worked at any time during the year.

County Determination: Based on county of employment in which the person made the most money in the year.

N/A: Represents persons with demographic data that is unavailable.

N/A = Nonresidents, individuals for whom demographic data are not available.

Source: Demographics of Persons Working in Wyoming by County, Industry, Age, & Gender, 2000-2018.

Research & Planning, Wyoming Department of Workforce Services.

Prepared by M. Moore, Research & Planning, WY DWS, 7/31/19.

Average Earnings by Age and Gender with Place of Work in Hot Springs County in 2009

Gender	Age Group	Number	Age Percent	Gender Percent	Average Annual Wage	Average Quarters Worked	Average Annual Employers
Women	00-19	96	7.7	0.0	\$3,143	2.8	1.6
Women	20-24	105	8.5	0.0	\$13,155	3.1	1.7
Women	25-34	181	14.6	0.0	\$18,260	3.5	1.6
Women	35-44	204	16.4	0.0	\$26,579	3.6	1.5
Women	45-54	316	25.5	0.0	\$26,843	3.6	1.3
Women	55-64	234	18.9	0.0	\$27,685	3.6	1.2
Women	65-Up	105	8.5	0.0	\$11,043	3.4	1.2
Women	Total	1,241	100.0	48.3	\$21,378	3.5	1.4
Men	00-19	97	8.3	0.0	\$4,755	2.7	1.3
Men	20-24	95	8.1	0.0	\$15,730	2.9	1.6
Men	25-34	233	20.0	0.0	\$28,991	3.3	1.5
Men	35-44	192	16.5	0.0	\$37,473	3.5	1.3
Men	45-54	242	20.7	0.0	\$41,227	3.5	1.2
Men	55-64	197	16.9	0.0	\$39,464	3.6	1.2
Men	65-Up	111	9.5	0.0	\$21,159	3.4	1.2
Men	Total	1,167	100.0	45.4	\$30,853	3.4	1.3
N/A	N/A	161	100.0	0.0	\$10,059	2.4	1.1
N/A	Total	161	100.0	6.3	\$10,059	2.4	1.1
Total	00-19	193	7.5	0.0	\$3,953	2.7	1.5
Total	20-24	200	7.8	0.0	\$14,378	3.0	1.7
Total	25-34	414	16.1	0.0	\$24,300	3.4	1.5
Total	35-44	396	15.4	0.0	\$31,861	3.6	1.4
Total	45-54	558	21.7	0.0	\$33,081	3.6	1.3
Total	55-64	431	16.8	0.0	\$33,069	3.6	1.2
Total	65-Up	216	8.4	0.0	\$16,242	3.4	1.2
Total	N/A	161	6.3	0.0	\$10,059	2.4	1.1
Total	Total	2,569	100.0	100.0	\$24,973	3.4	1.3

Note: Persons worked at any time during the year.

County Determination: Based on county of employment in which the person made the most money in the year.

N/A: Represents persons with demographic data that is unavailable.

N/A = Nonresidents, individuals for whom demographic data are not available.

Source: Demographics of Persons Working in Wyoming by County, Industry, Age, & Gender, 2000-2018.

Research & Planning, Wyoming Department of Workforce Services.

Prepared by M. Moore, Research & Planning, WY DWS, 7/31/19.

Average Earnings by Age and Gender with Place of Work in Hot Springs County in 2010

Gender	Age Group	Number	Age Percent	Gender Percent	Average Annual Wage	Average Quarters Worked	Average Annual Employers
Women	00-19	99	7.8	0.0	\$2,966	2.6	1.6
Women	20-24	102	8.1	0.0	\$13,188	3.1	1.7
Women	25-34	199	15.8	0.0	\$18,915	3.4	1.6
Women	35-44	207	16.4	0.0	\$25,628	3.6	1.5
Women	45-54	297	23.5	0.0	\$27,126	3.7	1.4
Women	55-64	251	19.9	0.0	\$28,192	3.7	1.2
Women	65-Up	107	8.5	0.0	\$11,053	3.3	1.2
Women	N/A						
Women	Total	1,263	100.0	48.5	\$21,400	3.5	1.4
Men	00-19	96	8.0	0.0	\$6,113	2.5	1.4
Men	20-24	114	9.5	0.0	\$14,581	2.9	1.6
Men	25-34	239	20.0	0.0	\$29,320	3.3	1.5
Men	35-44	190	15.9	0.0	\$39,750	3.5	1.4
Men	45-54	246	20.6	0.0	\$42,083	3.6	1.3
Men	55-64	205	17.2	0.0	\$42,379	3.6	1.2
Men	65-Up	104	8.7	0.0	\$21,045	3.3	1.1
Men	N/A						
Men	Total	1,195	100.0	45.9	\$31,846	3.3	1.3
N/A	N/A	147	100.0	0.0	\$13,010	2.4	1.1
N/A	Total	147	100.0	5.6	\$13,010	2.4	1.1
Total	00-19	195	7.5	0.0	\$4,515	2.6	1.5
Total	20-24	216	8.3	0.0	\$13,923	3.0	1.6
Total	25-34	438	16.8	0.0	\$24,592	3.4	1.5
Total	35-44	397	15.2	0.0	\$32,387	3.6	1.4
Total	45-54	543	20.8	0.0	\$33,902	3.6	1.3
Total	55-64	456	17.5	0.0	\$34,570	3.7	1.2
Total	65-Up	211	8.1	0.0	\$15,978	3.3	1.2
Total	N/A	149	5.7	0.0	\$12,994	2.4	1.1
Total	Total	2,605	100.0	100.0	\$25,719	3.3	1.4

Note: Persons worked at any time during the year.

County Determination: Based on county of employment in which the person made the most money in the year.

N/A: Represents persons with demographic data that is unavailable.

N/A = Nonresidents, individuals for whom demographic data are not available.

Source: Demographics of Persons Working in Wyoming by County, Industry, Age, & Gender, 2000-2018.

Research & Planning, Wyoming Department of Workforce Services.

Prepared by M. Moore, Research & Planning, WY DWS, 7/31/19.

Average Earnings by Age and Gender with Place of Work in Hot Springs County in 2011

Gender	Age Group	Number	Age Percent	Gender Percent	Average Annual Wage	Average Quarters Worked	Average Annual Employers
Women	00-19	99	7.9	0.0	\$3,137	2.5	1.4
Women	20-24	109	8.7	0.0	\$12,831	3.1	1.8
Women	25-34	193	15.4	0.0	\$20,292	3.3	1.6
Women	35-44	203	16.2	0.0	\$25,335	3.6	1.5
Women	45-54	286	22.8	0.0	\$27,703	3.7	1.4
Women	55-64	266	21.2	0.0	\$27,882	3.6	1.2
Women	65-Up	96	7.7	0.0	\$12,535	3.5	1.3
Women	N/A						
Women	Total	1,253	100.0	47.4	\$21,800	3.4	1.4
Men	00-19	97	7.8	0.0	\$4,336	2.5	1.4
Men	20-24	123	9.9	0.0	\$19,262	3.1	1.7
Men	25-34	260	20.9	0.0	\$31,044	3.3	1.4
Men	35-44	203	16.3	0.0	\$41,805	3.5	1.4
Men	45-54	238	19.1	0.0	\$45,142	3.6	1.3
Men	55-64	221	17.8	0.0	\$41,102	3.5	1.2
Men	65-Up	101	8.1	0.0	\$23,262	3.2	1.2
Men	N/A	3	0.2	0.0	\$35,414	3.5	1.0
Men	Total	1,245	100.0	47.1	\$33,410	3.3	1.4
N/A	N/A	145	100.0	0.0	\$13,587	2.3	1.1
N/A	Total	145	100.0	5.5	\$13,587	2.3	1.1
Total	00-19	196	7.4	0.0	\$3,731	2.5	1.4
Total	20-24	232	8.8	0.0	\$16,241	3.1	1.7
Total	25-34	453	17.1	0.0	\$26,463	3.3	1.5
Total	35-44	406	15.4	0.0	\$33,570	3.5	1.4
Total	45-54	524	19.8	0.0	\$35,624	3.6	1.3
Total	55-64	487	18.4	0.0	\$33,881	3.6	1.2
Total	65-Up	197	7.5	0.0	\$18,035	3.4	1.2
Total	N/A	148	5.6	0.0	\$13,812	2.3	1.1
Total	Total	2,643	100.0	100.0	\$26,818	3.3	1.4

Note: Persons worked at any time during the year.

County Determination: Based on county of employment in which the person made the most money in the year.

N/A: Represents persons with demographic data that is unavailable.

N/A = Nonresidents, individuals for whom demographic data are not available.

Source: Demographics of Persons Working in Wyoming by County, Industry, Age, & Gender, 2000-2018.

Research & Planning, Wyoming Department of Workforce Services.

Prepared by M. Moore, Research & Planning, WY DWS, 7/31/19.

Average Earnings by Age and Gender with Place of Work in Hot Springs County in 2012

Gender	Age Group	Number	Age Percent	Gender Percent	Average Annual Wage	Average Quarters Worked	Average Annual Employers
Women	00-19	96	7.5	0.0	\$3,347	2.6	1.6
Women	20-24	109	8.5	0.0	\$11,212	3.0	1.8
Women	25-34	218	17.0	0.0	\$20,958	3.4	1.5
Women	35-44	213	16.6	0.0	\$25,783	3.5	1.5
Women	45-54	258	20.1	0.0	\$28,804	3.7	1.4
Women	55-64	280	21.8	0.0	\$28,285	3.6	1.2
Women	65-Up	109	8.5	0.0	\$14,052	3.4	1.2
Women	Total	1,283	100.0	48.4	\$22,204	3.4	1.4
Men	00-19	86	7.1	0.0	\$5,328	2.5	1.5
Men	20-24	111	9.2	0.0	\$18,527	3.0	1.7
Men	25-34	273	22.6	0.0	\$33,443	3.4	1.5
Men	35-44	201	16.6	0.0	\$46,827	3.5	1.3
Men	45-54	230	19.0	0.0	\$48,034	3.7	1.3
Men	55-64	206	17.0	0.0	\$45,592	3.6	1.2
Men	65-Up	101	8.4	0.0	\$24,939	3.3	1.2
Men	N/A						
Men	Total	1,209	100.0	45.6	\$36,461	3.4	1.4
N/A	N/A	158	100.0	0.0	\$14,345	2.4	1.0
N/A	Total	158	100.0	6.0	\$14,345	2.4	1.0
Total	00-19	182	6.9	0.0	\$4,283	2.6	1.6
Total	20-24	220	8.3	0.0	\$14,903	3.0	1.8
Total	25-34	491	18.5	0.0	\$27,900	3.4	1.5
Total	35-44	414	15.6	0.0	\$36,000	3.5	1.4
Total	45-54	488	18.4	0.0	\$37,867	3.7	1.4
Total	55-64	486	18.3	0.0	\$35,621	3.6	1.2
Total	65-Up	210	7.9	0.0	\$19,288	3.4	1.2
Total	N/A	159	6.0	0.0	\$14,669	2.4	1.0
Total	Total	2,650	100.0	100.0	\$28,240	3.3	1.4

Note: Persons worked at any time during the year.

County Determination: Based on county of employment in which the person made the most money in the year.

N/A: Represents persons with demographic data that is unavailable.

N/A = Nonresidents, individuals for whom demographic data are not available.

Source: Demographics of Persons Working in Wyoming by County, Industry, Age, & Gender, 2000-2018.

Research & Planning, Wyoming Department of Workforce Services.

Prepared by M. Moore, Research & Planning, WY DWS, 7/31/19.

Average Earnings by Age and Gender with Place of Work in Hot Springs County in 2013

Gender	Age Group	Number	Age Percent	Gender Percent	Average Annual Wage	Average Quarters Worked	Average Annual Employers
Women	00-19	106	8.2	0.0	\$3,407	2.7	1.7
Women	20-24	109	8.5	0.0	\$11,690	3.0	1.8
Women	25-34	218	16.9	0.0	\$21,068	3.4	1.5
Women	35-44	220	17.1	0.0	\$23,223	3.4	1.6
Women	45-54	247	19.2	0.0	\$29,813	3.6	1.3
Women	55-64	278	21.6	0.0	\$29,580	3.6	1.3
Women	65-Up	111	8.6	0.0	\$14,119	3.2	1.2
Women	Total	1,289	100.0	48.5	\$22,104	3.4	1.4
Men	00-19	79	6.6	0.0	\$4,248	2.5	1.6
Men	20-24	112	9.4	0.0	\$20,686	3.1	1.7
Men	25-34	265	22.3	0.0	\$35,509	3.4	1.5
Men	35-44	196	16.5	0.0	\$49,380	3.5	1.4
Men	45-54	218	18.3	0.0	\$49,574	3.7	1.2
Men	55-64	206	17.3	0.0	\$47,420	3.6	1.2
Men	65-Up	113	9.5	0.0	\$24,979	3.3	1.2
Men	N/A	3	0.2	0.0	\$40,245	2.5	1.0
Men	Total	1,191	100.0	44.8	\$37,968	3.4	1.4
N/A	N/A	178	100.0	0.0	\$20,111	2.4	1.1
N/A	Total	178	100.0	6.7	\$20,111	2.4	1.1
Total	00-19	185	7.0	0.0	\$3,766	2.6	1.6
Total	20-24	221	8.3	0.0	\$16,249	3.1	1.8
Total	25-34	483	18.2	0.0	\$28,991	3.4	1.5
Total	35-44	416	15.7	0.0	\$35,547	3.5	1.5
Total	45-54	465	17.5	0.0	\$39,077	3.7	1.3
Total	55-64	484	18.2	0.0	\$37,173	3.6	1.2
Total	65-Up	224	8.4	0.0	\$19,598	3.3	1.2
Total	N/A	180	6.8	0.0	\$20,334	2.4	1.1
Total	Total	2,658	100.0	100.0	\$29,079	3.3	1.4

Note: Persons worked at any time during the year.

County Determination: Based on county of employment in which the person made the most money in the year.

N/A: Represents persons with demographic data that is unavailable.

N/A = Nonresidents, individuals for whom demographic data are not available.

Source: Demographics of Persons Working in Wyoming by County, Industry, Age, & Gender, 2000-2018.
Research & Planning, Wyoming Department of Workforce Services.

Prepared by M. Moore, Research & Planning, WY DWS, 7/31/19.

Average Earnings by Age and Gender with Place of Work in Hot Springs County in 2014

Gender	Age Group	Number	Age Percent	Gender Percent	Average Annual Wage	Average Quarters Worked	Average Annual Employers
Women	00-19	112	9.1	0.0	\$4,596	2.9	1.7
Women	20-24	79	6.4	0.0	\$11,836	3.1	1.9
Women	25-34	216	17.5	0.0	\$21,428	3.3	1.5
Women	35-44	222	18.0	0.0	\$26,278	3.6	1.5
Women	45-54	223	18.1	0.0	\$30,687	3.7	1.3
Women	55-64	279	22.6	0.0	\$31,124	3.7	1.3
Women	65-Up	102	8.3	0.0	\$15,868	3.3	1.2
Women	Total	1,233	100.0	47.6	\$23,566	3.5	1.4
Men	00-19	85	7.2	0.0	\$4,258	2.6	1.5
Men	20-24	122	10.3	0.0	\$20,540	3.0	1.7
Men	25-34	239	20.2	0.0	\$39,803	3.4	1.5
Men	35-44	208	17.6	0.0	\$50,332	3.6	1.4
Men	45-54	211	17.8	0.0	\$51,012	3.6	1.2
Men	55-64	208	17.6	0.0	\$50,081	3.6	1.3
Men	65-Up	109	9.2	0.0	\$23,612	3.4	1.2
Men	N/A	3	0.3	0.0	\$26,274	2.3	1.0
Men	Total	1,185	100.0	45.7	\$39,395	3.4	1.4
N/A	N/A	175	100.0	0.0	\$17,284	2.3	1.1
N/A	Total	175	100.0	6.7	\$17,284	2.3	1.1
Total	00-19	197	7.6	0.0	\$4,450	2.7	1.6
Total	20-24	201	7.8	0.0	\$17,119	3.0	1.8
Total	25-34	455	17.5	0.0	\$31,080	3.4	1.5
Total	35-44	430	16.6	0.0	\$37,913	3.6	1.5
Total	45-54	434	16.7	0.0	\$40,569	3.6	1.3
Total	55-64	487	18.8	0.0	\$39,221	3.6	1.3
Total	65-Up	211	8.1	0.0	\$19,869	3.3	1.2
Total	N/A	178	6.9	0.0	\$17,436	2.3	1.1
Total	Total	2,593	100.0	100.0	\$30,376	3.4	1.4

Note: Persons worked at any time during the year.

County Determination: Based on county of employment in which the person made the most money in the year.

N/A: Represents persons with demographic data that is unavailable.

N/A = Nonresidents, individuals for whom demographic data are not available.

Source: Demographics of Persons Working in Wyoming by County, Industry, Age, & Gender, 2000-2018.

Research & Planning, Wyoming Department of Workforce Services.

Prepared by M. Moore, Research & Planning, WY DWS, 7/31/19.

Average Earnings by Age and Gender with Place of Work in Hot Springs County in 2015

Gender	Age Group	Number	Age Percent	Gender Percent	Average Annual Wage	Average Quarters Worked	Average Annual Employers
Women	00-19	103	8.6	0.0	\$4,004	2.7	1.5
Women	20-24	81	6.7	0.0	\$13,153	3.2	1.8
Women	25-34	225	18.7	0.0	\$22,936	3.5	1.5
Women	35-44	210	17.4	0.0	\$26,444	3.5	1.5
Women	45-54	210	17.4	0.0	\$32,071	3.7	1.4
Women	55-64	272	22.6	0.0	\$30,498	3.6	1.2
Women	65-Up	102	8.5	0.0	\$16,314	3.3	1.1
Women	N/A						
Women	Total	1,204	100.0	48.0	\$23,994	3.4	1.4
Men	00-19	97	8.4	0.0	\$3,537	2.5	1.5
Men	20-24	96	8.3	0.0	\$21,297	3.4	1.8
Men	25-34	251	21.7	0.0	\$36,275	3.4	1.5
Men	35-44	181	15.7	0.0	\$46,431	3.5	1.3
Men	45-54	217	18.8	0.0	\$49,052	3.6	1.3
Men	55-64	202	17.5	0.0	\$45,779	3.5	1.1
Men	65-Up	109	9.4	0.0	\$22,090	3.3	1.2
Men	N/A	3	0.3	0.0	\$25,466	2.3	1.0
Men	Total	1,156	100.0	46.1	\$36,568	3.4	1.3
N/A	N/A	150	100.0	0.0	\$13,894	2.1	1.0
N/A	Total	150	100.0	6.0	\$13,894	2.1	1.0
Total	00-19	200	8.0	0.0	\$3,777	2.6	1.5
Total	20-24	177	7.1	0.0	\$17,570	3.3	1.8
Total	25-34	476	19.0	0.0	\$29,970	3.4	1.5
Total	35-44	391	15.6	0.0	\$35,696	3.5	1.4
Total	45-54	427	17.0	0.0	\$40,701	3.6	1.3
Total	55-64	474	18.9	0.0	\$37,010	3.6	1.2
Total	65-Up	211	8.4	0.0	\$19,298	3.3	1.1
Total	N/A	154	6.1	0.0	\$14,043	2.1	1.0
Total	Total	2,510	100.0	100.0	\$29,181	3.3	1.4

Note: Persons worked at any time during the year.

County Determination: Based on county of employment in which the person made the most money in the year.

N/A: Represents persons with demographic data that is unavailable.

N/A = Nonresidents, individuals for whom demographic data are not available.

Source: Demographics of Persons Working in Wyoming by County, Industry, Age, & Gender, 2000-2018.

Research & Planning, Wyoming Department of Workforce Services.

Prepared by M. Moore, Research & Planning, WY DWS, 7/31/19.

Average Earnings by Age and Gender with Place of Work in Hot Springs County in 2016

Gender	Age Group	Number	Age Percent	Gender Percent	Average Annual Wage	Average Quarters Worked	Average Annual Employers
Women	00-19	108	9.1	0.0	\$3,880	2.6	1.6
Women	20-24	80	6.8	0.0	\$12,584	3.1	1.7
Women	25-34	232	19.6	0.0	\$24,673	3.5	1.5
Women	35-44	203	17.1	0.0	\$27,463	3.6	1.6
Women	45-54	200	16.9	0.0	\$33,395	3.7	1.3
Women	55-64	257	21.7	0.0	\$32,259	3.7	1.2
Women	65-Up	104	8.8	0.0	\$15,486	3.4	1.1
Women	N/A						
Women	Total	1,185	100.0	49.0	\$24,734	3.5	1.4
Men	00-19	95	8.5	0.0	\$4,024	2.7	1.5
Men	20-24	84	7.5	0.0	\$17,989	3.1	1.7
Men	25-34	256	22.8	0.0	\$32,499	3.4	1.4
Men	35-44	193	17.2	0.0	\$44,995	3.5	1.4
Men	45-54	183	16.3	0.0	\$45,960	3.7	1.3
Men	55-64	207	18.4	0.0	\$43,928	3.5	1.2
Men	65-Up	102	9.1	0.0	\$21,991	3.4	1.2
Men	N/A	3	0.2	0.0	\$49,366	4.0	1.0
Men	Total	1,122	100.0	46.4	\$34,530	3.4	1.4
N/A	N/A	113	100.0	0.0	\$15,441	2.3	1.1
N/A	Total	113	100.0	4.7	\$15,441	2.3	1.1
Total	00-19	203	8.4	0.0	\$3,947	2.6	1.6
Total	20-24	164	6.8	0.0	\$15,352	3.1	1.7
Total	25-34	488	20.2	0.0	\$28,779	3.4	1.5
Total	35-44	396	16.4	0.0	\$36,008	3.5	1.5
Total	45-54	383	15.8	0.0	\$39,399	3.7	1.3
Total	55-64	464	19.2	0.0	\$37,465	3.6	1.2
Total	65-Up	206	8.5	0.0	\$18,707	3.4	1.1
Total	N/A	116	4.8	0.0	\$15,938	2.3	1.1
Total	Total	2,420	100.0	100.0	\$28,842	3.4	1.4

Note: Persons worked at any time during the year.

County Determination: Based on county of employment in which the person made the most money in the year.

N/A: Represents persons with demographic data that is unavailable.

N/A = Nonresidents, individuals for whom demographic data are not available.

Source: Demographics of Persons Working in Wyoming by County, Industry, Age, & Gender, 2000-2018.

Research & Planning, Wyoming Department of Workforce Services.

Prepared by M. Moore, Research & Planning, WY DWS, 7/31/19.

Average Earnings by Age and Gender with Place of Work in Hot Springs County in 2017

Gender	Age Group	Number	Age Percent	Gender Percent	Average Annual Wage	Average Quarters Worked	Average Annual Employers
Women	00-19	76	6.6	0.0	\$3,617	2.6	1.6
Women	20-24	85	7.4	0.0	\$13,728	3.2	2.1
Women	25-34	220	19.2	0.0	\$24,747	3.5	1.5
Women	35-44	209	18.3	0.0	\$27,911	3.6	1.5
Women	45-54	191	16.7	0.0	\$32,497	3.7	1.3
Women	55-64	250	21.9	0.0	\$30,676	3.5	1.2
Women	65-Up	112	9.8	0.0	\$16,113	3.3	1.1
Women	N/A						
Women	Total	1,144	100.0	48.1	\$24,835	3.4	1.4
Men	00-19	102	9.4	0.0	\$4,331	2.6	1.6
Men	20-24	74	6.8	0.0	\$16,760	3.1	1.9
Men	25-34	239	22.0	0.0	\$36,995	3.5	1.4
Men	35-44	199	18.3	0.0	\$45,566	3.4	1.3
Men	45-54	176	16.2	0.0	\$54,599	3.7	1.2
Men	55-64	191	17.6	0.0	\$44,487	3.5	1.2
Men	65-Up	104	9.6	0.0	\$24,581	3.4	1.1
Men	N/A	3	0.2	0.0	\$46,597	3.0	1.0
Men	Total	1,087	100.0	45.7	\$37,118	3.4	1.3
N/A	N/A	147	100.0	0.0	\$11,311	2.1	1.2
N/A	Total	147	100.0	6.2	\$11,311	2.1	1.2
Total	00-19	178	7.5	0.0	\$4,026	2.6	1.6
Total	20-24	159	6.7	0.0	\$15,139	3.2	2.0
Total	25-34	459	19.3	0.0	\$31,125	3.5	1.4
Total	35-44	408	17.2	0.0	\$36,522	3.5	1.4
Total	45-54	367	15.4	0.0	\$43,097	3.7	1.3
Total	55-64	441	18.5	0.0	\$36,657	3.5	1.2
Total	65-Up	216	9.1	0.0	\$20,190	3.4	1.1
Total	N/A	150	6.3	0.0	\$11,782	2.2	1.2
Total	Total	2,378	100.0	100.0	\$29,614	3.3	1.4

Note: Persons worked at any time during the year.

County Determination: Based on county of employment in which the person made the most money in the year.

N/A: Represents persons with demographic data that is unavailable.

N/A = Nonresidents, individuals for whom demographic data are not available.

Source: Demographics of Persons Working in Wyoming by County, Industry, Age, & Gender, 2000-2018.

Research & Planning, Wyoming Department of Workforce Services.

Prepared by M. Moore, Research & Planning, WY DWS, 7/31/19.

Average Earnings by Age and Gender with Place of Work in Hot Springs County in 2018

Gender	Age Group	Number	Age Percent	Gender Percent	Average Annual Wage	Average Quarters Worked	Average Annual Employers
Women	00-19	89	8.0	0.0	\$3,997	2.8	1.6
Women	20-24	88	7.9	0.0	\$14,168	3.0	1.7
Women	25-34	188	16.8	0.0	\$26,545	3.5	1.4
Women	35-44	216	19.3	0.0	\$31,281	3.6	1.5
Women	45-54	197	17.6	0.0	\$35,029	3.6	1.4
Women	55-64	223	19.9	0.0	\$32,341	3.6	1.2
Women	65-Up	115	10.3	0.0	\$17,403	3.3	1.1
Women	N/A	3	0.3	0.0	\$10,641	2.3	1.0
Women	Total	1,119	100.0	48.0	\$26,359	3.4	1.4
Men	00-19	87	8.3	0.0	\$6,255	2.9	1.7
Men	20-24	75	7.1	0.0	\$15,897	2.9	1.7
Men	25-34	226	21.5	0.0	\$37,466	3.5	1.5
Men	35-44	197	18.7	0.0	\$49,157	3.5	1.4
Men	45-54	167	15.9	0.0	\$57,738	3.6	1.3
Men	55-64	188	17.9	0.0	\$45,473	3.6	1.2
Men	65-Up	111	10.5	0.0	\$29,616	3.4	1.2
Men	N/A	3	0.2	0.0	\$39,287	2.5	1.0
Men	Total	1,053	100.0	45.2	\$39,359	3.4	1.4
N/A	N/A	158	100.0	0.0	\$11,950	2.1	1.1
N/A	Total	158	100.0	6.8	\$11,950	2.1	1.1
Total	00-19	176	7.6	0.0	\$5,114	2.8	1.7
Total	20-24	163	7.0	0.0	\$14,963	3.0	1.7
Total	25-34	414	17.8	0.0	\$32,507	3.5	1.5
Total	35-44	413	17.7	0.0	\$39,807	3.5	1.5
Total	45-54	364	15.6	0.0	\$45,448	3.6	1.3
Total	55-64	411	17.6	0.0	\$38,348	3.6	1.2
Total	65-Up	226	9.7	0.0	\$23,401	3.3	1.2
Total	N/A	163	7.0	0.0	\$12,262	2.1	1.1
Total	Total	2,330	100.0	100.0	\$31,257	3.3	1.4

Note: Persons worked at any time during the year.

County Determination: Based on county of employment in which the person made the most money in the year.

N/A: Represents persons with demographic data that is unavailable.

N/A = Nonresidents, individuals for whom demographic data are not available.

Source: Demographics of Persons Working in Wyoming by County, Industry, Age, & Gender, 2000-2018.

Research & Planning, Wyoming Department of Workforce Services.

Prepared by M. Moore, Research & Planning, WY DWS, 7/31/19.