

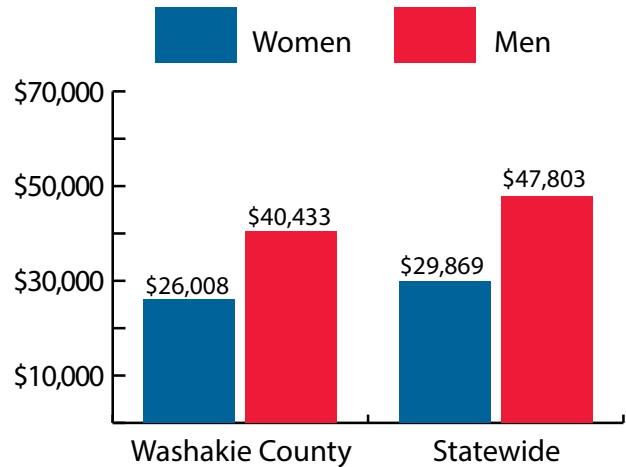
Washakie County at a Glance, 2018

Demographics of Persons Working in Wyoming by County, Industry, Age, & Gender, 2000-2018

Table: Total Number of Persons Working in Washakie County, WY, at Any Time by Gender and Age, 2017-2018

Gender	2017	2018	Change	
			N	%
Women	1,952	1,958	6	0.3
Men	2,143	2,118	-25	-1.2
Nonresidents	297	299	2	0.7
Total	4,392	4,375	-17	-0.4

Age	2017	2018	Change	
			N	%
00-19	330	333	3	0.9
20-24	319	324	5	1.6
25-34	699	696	-3	-0.4
35-44	760	754	-6	-0.8
45-54	778	735	-43	-5.5
55-64	814	816	2	0.2
65-Up	390	414	24	6.2
Nonresidents	302	303	1	0.3
Total	4,392	4,375	-17	-0.4



Women's Wages as % of Men's Wages

Washakie County: 64.3%

Total, Statewide: 62.5%

Figure: Average Annual Wages by Gender, 2018

Total = 4,375

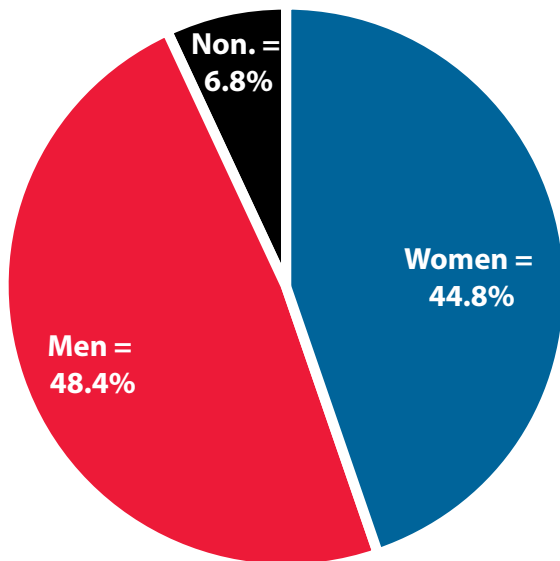


Figure: Persons Working by Gender, 2018

Total = 4,375

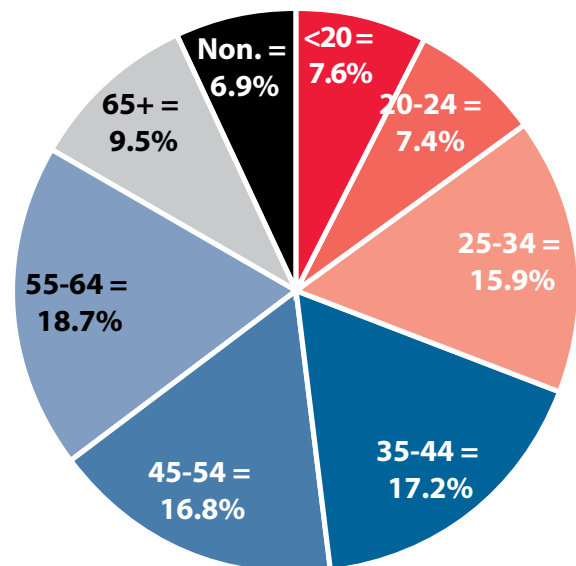


Figure: Persons Working by Age, 2018

Note: Nonresidents are individuals for whom demographic data are not available.

Source: Demographics of Persons Working in Wyoming by County, Industry, Age, & Gender, 2000-2018. Research & Planning, Wyoming Department of Workforce Services. Prepared by M. Moore, Research & Planning, WY DWS, 7/31/19.

Persons Working in Washakie County by Gender and Age, 2000-2018

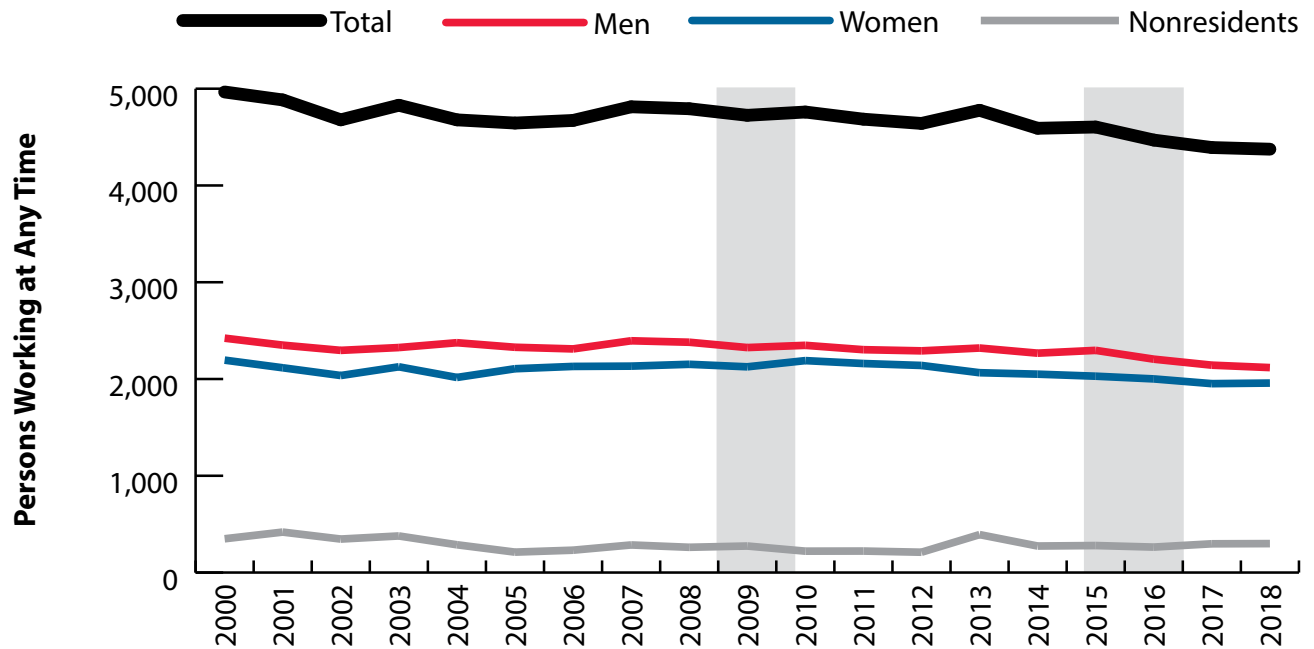


Figure: Persons Working in Washakie County at Any Time by Gender, 2000-2018

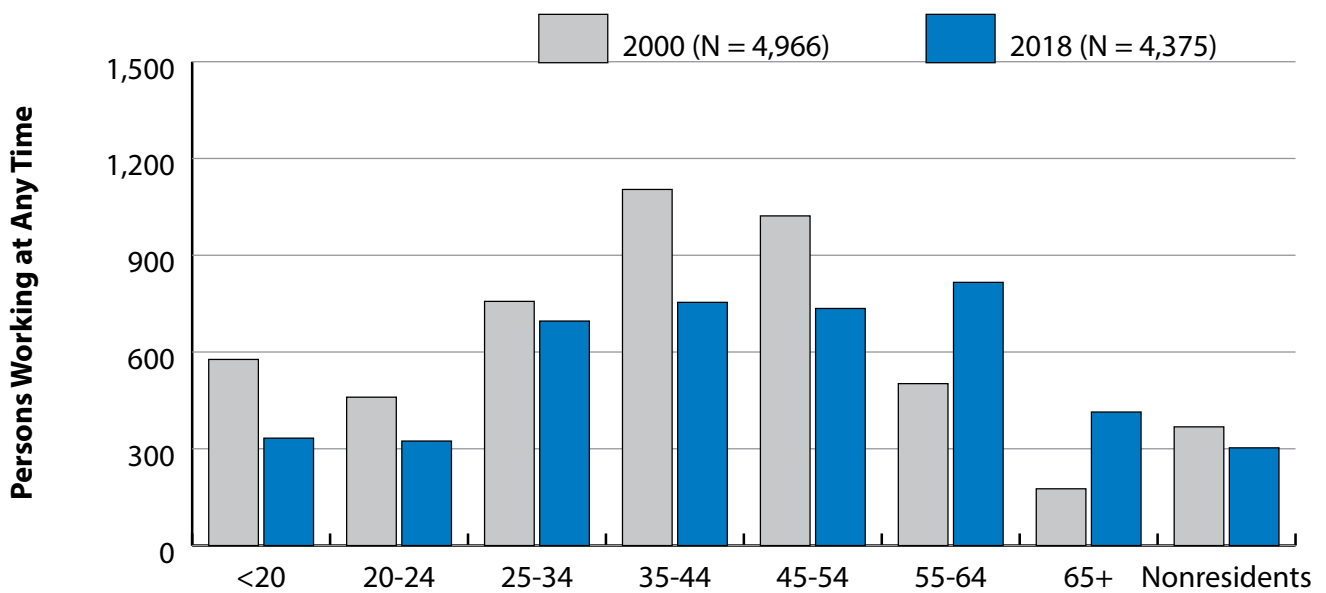


Figure: Persons Working in Washakie County at Any Time by Age, 2000-2018

Note: Nonresidents are individuals for whom demographic data are not available.
 Shaded areas indicate periods of economic downturn: 2009Q1-2010Q1 and 2015Q2-2016Q4.
 Source: Demographics of Persons Working in Wyoming by County, Industry, Age, & Gender, 2000-2018. Research & Planning, Wyoming Department of Workforce Services. Prepared by M. Moore, Research & Planning, WY DWS, 7/31/19.

Average Earnings by Age and Gender with Place of Work in Washakie County in 2000

Gender	Age Group	Number	Age Percent	Gender Percent	Average Annual Wage	Average Quarters Worked	Average Annual Employers
Women	00-19	273	12.4	0.0	\$2,821	2.7	1.7
Women	20-24	232	10.6	0.0	\$6,575	2.9	2.0
Women	25-34	354	16.1	0.0	\$12,721	3.3	1.7
Women	35-44	535	24.4	0.0	\$16,621	3.5	1.4
Women	45-54	491	22.4	0.0	\$17,690	3.5	1.4
Women	55-64	218	9.9	0.0	\$15,868	3.4	1.2
Women	65-Up	78	3.6	0.0	\$7,801	3.1	1.2
Women	N/A	14	0.6	0.0	\$7,356	2.8	1.2
Women	Total	2,195	100.0	44.2	\$13,006	3.3	1.5
Men	00-19	304	12.6	0.0	\$3,172	2.5	1.7
Men	20-24	228	9.4	0.0	\$9,789	2.8	1.9
Men	25-34	403	16.6	0.0	\$22,820	3.4	1.6
Men	35-44	569	23.5	0.0	\$29,453	3.4	1.4
Men	45-54	531	21.9	0.0	\$34,635	3.5	1.3
Men	55-64	284	11.7	0.0	\$31,807	3.4	1.2
Men	65-Up	98	4.0	0.0	\$14,319	2.8	1.2
Men	N/A	5	0.2	0.0	\$14,015	3.0	1.6
Men	Total	2,422	100.0	48.8	\$23,967	3.2	1.4
N/A	N/A	349	100.0	0.0	\$5,844	1.5	1.1
N/A	Total	349	100.0	7.0	\$5,844	1.5	1.1
Total	00-19	577	11.6	0.0	\$3,006	2.6	1.7
Total	20-24	460	9.3	0.0	\$8,168	2.8	1.9
Total	25-34	757	15.2	0.0	\$18,097	3.3	1.6
Total	35-44	1,104	22.2	0.0	\$23,235	3.5	1.4
Total	45-54	1,022	20.6	0.0	\$26,494	3.5	1.3
Total	55-64	502	10.1	0.0	\$24,885	3.4	1.2
Total	65-Up	176	3.5	0.0	\$11,430	2.9	1.2
Total	N/A	368	7.4	0.0	\$6,012	1.6	1.1
Total	Total	4,966	100.0	100.0	\$17,849	3.1	1.5

Note: Persons worked at any time during the year.

County Determination: Based on county of employment in which the person made the most money in the year.

N/A: Represents persons with demographic data that is unavailable.

N/A = Nonresidents, individuals for whom demographic data are not available.

Source: Demographics of Persons Working in Wyoming by County, Industry, Age, & Gender, 2000-2018.

Research & Planning, Wyoming Department of Workforce Services.

Prepared by M. Moore, Research & Planning, WY DWS, 7/31/19.

Average Earnings by Age and Gender with Place of Work in Washakie County in 2001

Gender	Age Group	Number	Age Percent	Gender Percent	Average Annual Wage	Average Quarters Worked	Average Annual Employers
Women	00-19	238	11.2	0.0	\$3,132	2.8	1.6
Women	20-24	229	10.8	0.0	\$6,567	2.9	1.8
Women	25-34	356	16.8	0.0	\$13,046	3.2	1.6
Women	35-44	505	23.9	0.0	\$17,665	3.5	1.4
Women	45-54	479	22.6	0.0	\$19,740	3.5	1.3
Women	55-64	219	10.3	0.0	\$17,493	3.5	1.3
Women	65-Up	81	3.8	0.0	\$7,937	3.0	1.1
Women	N/A	9	0.4	0.0	\$7,964	2.4	1.4
Women	Total	2,116	100.0	43.3	\$14,090	3.3	1.5
Men	00-19	283	12.0	0.0	\$3,058	2.5	1.6
Men	20-24	227	9.7	0.0	\$11,884	3.0	1.8
Men	25-34	393	16.7	0.0	\$23,702	3.3	1.5
Men	35-44	515	21.9	0.0	\$32,074	3.5	1.4
Men	45-54	525	22.3	0.0	\$35,891	3.6	1.3
Men	55-64	293	12.5	0.0	\$31,645	3.3	1.3
Men	65-Up	106	4.5	0.0	\$11,289	2.5	1.1
Men	N/A	8	0.3	0.0	\$6,583	1.8	1.6
Men	Total	2,350	100.0	48.1	\$25,004	3.2	1.4
N/A	N/A	418	100.0	0.0	\$8,732	1.3	1.0
N/A	Total	418	100.0	8.6	\$8,732	1.3	1.0
Total	00-19	521	10.7	0.0	\$3,092	2.6	1.6
Total	20-24	456	9.3	0.0	\$9,214	2.9	1.8
Total	25-34	749	15.3	0.0	\$18,637	3.2	1.5
Total	35-44	1,020	20.9	0.0	\$24,940	3.5	1.4
Total	45-54	1,004	20.6	0.0	\$28,185	3.5	1.3
Total	55-64	512	10.5	0.0	\$25,592	3.4	1.3
Total	65-Up	187	3.8	0.0	\$9,837	2.7	1.1
Total	N/A	435	8.9	0.0	\$8,676	1.4	1.1
Total	Total	4,884	100.0	100.0	\$18,883	3.1	1.4

Note: Persons worked at any time during the year.

County Determination: Based on county of employment in which the person made the most money in the year.

N/A: Represents persons with demographic data that is unavailable.

N/A = Nonresidents, individuals for whom demographic data are not available.

Source: Demographics of Persons Working in Wyoming by County, Industry, Age, & Gender, 2000-2018.

Research & Planning, Wyoming Department of Workforce Services.

Prepared by M. Moore, Research & Planning, WY DWS, 7/31/19.

Average Earnings by Age and Gender with Place of Work in Washakie County in 2002

Gender	Age Group	Number	Age Percent	Gender Percent	Average Annual Wage	Average Quarters Worked	Average Annual Employers
Women	00-19	211	10.4	0.0	\$3,418	2.7	1.5
Women	20-24	216	10.6	0.0	\$6,883	2.9	1.8
Women	25-34	326	16.0	0.0	\$14,045	3.2	1.5
Women	35-44	483	23.7	0.0	\$17,455	3.5	1.4
Women	45-54	478	23.5	0.0	\$19,858	3.6	1.3
Women	55-64	236	11.6	0.0	\$18,357	3.5	1.2
Women	65-Up	78	3.8	0.0	\$9,209	3.3	1.2
Women	N/A	8	0.4	0.0	\$6,499	2.1	1.0
Women	Total	2,036	100.0	43.5	\$14,642	3.3	1.4
Men	00-19	286	12.5	0.0	\$3,247	2.5	1.6
Men	20-24	230	10.0	0.0	\$12,000	3.0	1.8
Men	25-34	368	16.0	0.0	\$24,896	3.3	1.5
Men	35-44	476	20.7	0.0	\$32,130	3.5	1.4
Men	45-54	522	22.7	0.0	\$37,382	3.5	1.3
Men	55-64	303	13.2	0.0	\$34,102	3.4	1.3
Men	65-Up	106	4.6	0.0	\$12,540	2.9	1.2
Men	N/A	5	0.2	0.0	\$6,809	1.2	1.4
Men	Total	2,296	100.0	49.1	\$25,851	3.3	1.4
N/A	N/A	346	100.0	0.0	\$6,225	1.4	1.0
N/A	Total	346	100.0	7.4	\$6,225	1.4	1.0
Total	00-19	497	10.6	0.0	\$3,319	2.6	1.6
Total	20-24	446	9.5	0.0	\$9,522	3.0	1.8
Total	25-34	694	14.8	0.0	\$19,799	3.3	1.5
Total	35-44	959	20.5	0.0	\$24,739	3.5	1.4
Total	45-54	1,000	21.4	0.0	\$29,006	3.6	1.3
Total	55-64	539	11.5	0.0	\$27,208	3.5	1.3
Total	65-Up	184	3.9	0.0	\$11,128	3.1	1.2
Total	N/A	359	7.7	0.0	\$6,240	1.4	1.1
Total	Total	4,678	100.0	100.0	\$19,521	3.2	1.4

Note: Persons worked at any time during the year.

County Determination: Based on county of employment in which the person made the most money in the year.

N/A: Represents persons with demographic data that is unavailable.

N/A = Nonresidents, individuals for whom demographic data are not available.

Source: Demographics of Persons Working in Wyoming by County, Industry, Age, & Gender, 2000-2018.

Research & Planning, Wyoming Department of Workforce Services.

Prepared by M. Moore, Research & Planning, WY DWS, 7/31/19.

Average Earnings by Age and Gender with Place of Work in Washakie County in 2003

Gender	Age Group	Number	Age Percent	Gender Percent	Average Annual Wage	Average Quarters Worked	Average Annual Employers
Women	00-19	233	11.0	0.0	\$3,615	2.8	1.6
Women	20-24	200	9.4	0.0	\$7,452	2.9	1.8
Women	25-34	347	16.3	0.0	\$13,501	3.2	1.6
Women	35-44	470	22.1	0.0	\$18,302	3.5	1.4
Women	45-54	500	23.5	0.0	\$20,748	3.5	1.3
Women	55-64	282	13.3	0.0	\$18,864	3.5	1.3
Women	65-Up	83	3.9	0.0	\$8,094	3.2	1.2
Women	N/A	11	0.5	0.0	\$7,264	2.6	1.3
Women	Total	2,126	100.0	44.0	\$15,082	3.3	1.4
Men	00-19	280	12.0	0.0	\$3,769	2.6	1.5
Men	20-24	224	9.6	0.0	\$11,949	2.9	1.7
Men	25-34	366	15.7	0.0	\$26,600	3.4	1.5
Men	35-44	470	20.2	0.0	\$33,892	3.5	1.4
Men	45-54	535	23.0	0.0	\$37,524	3.5	1.3
Men	55-64	338	14.5	0.0	\$35,154	3.5	1.2
Men	65-Up	106	4.6	0.0	\$13,891	2.9	1.2
Men	N/A	6	0.3	0.0	\$9,447	2.3	1.7
Men	Total	2,325	100.0	48.1	\$27,047	3.3	1.4
N/A	N/A	378	100.0	0.0	\$6,103	1.4	1.1
N/A	Total	378	100.0	7.8	\$6,103	1.4	1.1
Total	00-19	513	10.6	0.0	\$3,699	2.7	1.6
Total	20-24	424	8.8	0.0	\$9,828	2.9	1.8
Total	25-34	713	14.8	0.0	\$20,225	3.3	1.5
Total	35-44	940	19.5	0.0	\$26,097	3.5	1.4
Total	45-54	1,035	21.4	0.0	\$29,420	3.5	1.3
Total	55-64	620	12.8	0.0	\$27,745	3.5	1.2
Total	65-Up	189	3.9	0.0	\$11,345	3.0	1.2
Total	N/A	395	8.2	0.0	\$6,186	1.4	1.1
Total	Total	4,829	100.0	100.0	\$20,140	3.2	1.4

Note: Persons worked at any time during the year.

County Determination: Based on county of employment in which the person made the most money in the year.

N/A: Represents persons with demographic data that is unavailable.

N/A = Nonresidents, individuals for whom demographic data are not available.

Source: Demographics of Persons Working in Wyoming by County, Industry, Age, & Gender, 2000-2018.

Research & Planning, Wyoming Department of Workforce Services.

Prepared by M. Moore, Research & Planning, WY DWS, 7/31/19.

Average Earnings by Age and Gender with Place of Work in Washakie County in 2004

Gender	Age Group	Number	Age Percent	Gender Percent	Average Annual Wage	Average Quarters Worked	Average Annual Employers
Women	00-19	201	10.0	0.0	\$3,184	2.6	1.6
Women	20-24	194	9.6	0.0	\$7,437	2.9	1.7
Women	25-34	330	16.4	0.0	\$14,438	3.2	1.6
Women	35-44	421	20.9	0.0	\$19,530	3.5	1.4
Women	45-54	486	24.1	0.0	\$21,992	3.6	1.3
Women	55-64	289	14.3	0.0	\$20,745	3.5	1.2
Women	65-Up	87	4.3	0.0	\$8,474	3.1	1.0
Women	N/A	8	0.4	0.0	\$7,164	2.4	1.3
Women	Total	2,016	100.0	43.1	\$16,144	3.3	1.4
Men	00-19	264	11.1	0.0	\$3,781	2.6	1.4
Men	20-24	262	11.0	0.0	\$12,045	2.9	1.8
Men	25-34	392	16.5	0.0	\$26,292	3.3	1.5
Men	35-44	437	18.4	0.0	\$36,319	3.6	1.4
Men	45-54	519	21.9	0.0	\$39,963	3.5	1.2
Men	55-64	370	15.6	0.0	\$35,291	3.5	1.2
Men	65-Up	127	5.3	0.0	\$17,035	3.0	1.1
Men	N/A	4	0.2	0.0	\$10,831	2.5	1.0
Men	Total	2,375	100.0	50.8	\$27,931	3.3	1.4
N/A	N/A	287	100.0	0.0	\$7,375	1.6	1.0
N/A	Total	287	100.0	6.1	\$7,375	1.6	1.0
Total	00-19	465	9.9	0.0	\$3,523	2.6	1.5
Total	20-24	456	9.7	0.0	\$10,085	2.9	1.8
Total	25-34	722	15.4	0.0	\$20,874	3.3	1.5
Total	35-44	858	18.3	0.0	\$28,081	3.5	1.4
Total	45-54	1,005	21.5	0.0	\$31,273	3.6	1.3
Total	55-64	659	14.1	0.0	\$28,912	3.5	1.2
Total	65-Up	214	4.6	0.0	\$13,554	3.1	1.1
Total	N/A	299	6.4	0.0	\$7,415	1.6	1.0
Total	Total	4,678	100.0	100.0	\$21,591	3.2	1.4

Note: Persons worked at any time during the year.

County Determination: Based on county of employment in which the person made the most money in the year.

N/A: Represents persons with demographic data that is unavailable.

N/A = Nonresidents, individuals for whom demographic data are not available.

Source: Demographics of Persons Working in Wyoming by County, Industry, Age, & Gender, 2000-2018.

Research & Planning, Wyoming Department of Workforce Services.

Prepared by M. Moore, Research & Planning, WY DWS, 7/31/19.

Average Earnings by Age and Gender with Place of Work in Washakie County in 2005

Gender	Age Group	Number	Age Percent	Gender Percent	Average Annual Wage	Average Quarters Worked	Average Annual Employers
Women	00-19	208	9.9	0.0	\$3,076	2.6	1.6
Women	20-24	217	10.3	0.0	\$8,541	3.0	1.9
Women	25-34	339	16.1	0.0	\$14,957	3.3	1.5
Women	35-44	421	20.0	0.0	\$20,262	3.6	1.4
Women	45-54	495	23.5	0.0	\$23,232	3.6	1.3
Women	55-64	327	15.5	0.0	\$22,531	3.6	1.2
Women	65-Up	93	4.4	0.0	\$10,152	3.3	1.2
Women	N/A	6	0.3	0.0	\$16,860	3.3	1.2
Women	Total	2,106	100.0	45.3	\$17,097	3.4	1.4
Men	00-19	253	10.9	0.0	\$3,815	2.5	1.5
Men	20-24	228	9.8	0.0	\$15,175	3.0	1.8
Men	25-34	391	16.8	0.0	\$28,942	3.4	1.5
Men	35-44	432	18.6	0.0	\$38,823	3.7	1.4
Men	45-54	509	21.9	0.0	\$42,086	3.6	1.3
Men	55-64	362	15.5	0.0	\$39,847	3.6	1.2
Men	65-Up	149	6.4	0.0	\$16,266	3.0	1.2
Men	N/A	4	0.2	0.0	\$5,657	1.8	1.5
Men	Total	2,328	100.0	50.1	\$30,415	3.4	1.4
N/A	N/A	211	100.0	0.0	\$7,608	1.9	1.1
N/A	Total	211	100.0	4.5	\$7,608	1.9	1.1
Total	00-19	461	9.9	0.0	\$3,481	2.5	1.6
Total	20-24	445	9.6	0.0	\$11,940	3.0	1.8
Total	25-34	730	15.7	0.0	\$22,448	3.4	1.5
Total	35-44	853	18.4	0.0	\$29,662	3.6	1.4
Total	45-54	1,004	21.6	0.0	\$32,790	3.6	1.3
Total	55-64	689	14.8	0.0	\$31,629	3.6	1.2
Total	65-Up	242	5.2	0.0	\$13,916	3.1	1.2
Total	N/A	221	4.8	0.0	\$7,824	1.9	1.1
Total	Total	4,645	100.0	100.0	\$23,341	3.3	1.4

Note: Persons worked at any time during the year.

County Determination: Based on county of employment in which the person made the most money in the year.

N/A: Represents persons with demographic data that is unavailable.

N/A = Nonresidents, individuals for whom demographic data are not available.

Source: Demographics of Persons Working in Wyoming by County, Industry, Age, & Gender, 2000-2018.

Research & Planning, Wyoming Department of Workforce Services.

Prepared by M. Moore, Research & Planning, WY DWS, 7/31/19.

Average Earnings by Age and Gender with Place of Work in Washakie County in 2006

Gender	Age Group	Number	Age Percent	Gender Percent	Average Annual Wage	Average Quarters Worked	Average Annual Employers
Women	00-19	225	10.6	0.0	\$3,406	2.7	1.8
Women	20-24	238	11.2	0.0	\$8,515	2.9	2.0
Women	25-34	328	15.4	0.0	\$16,361	3.3	1.6
Women	35-44	385	18.1	0.0	\$21,356	3.6	1.5
Women	45-54	507	23.8	0.0	\$24,463	3.6	1.4
Women	55-64	340	16.0	0.0	\$21,950	3.6	1.2
Women	65-Up	103	4.8	0.0	\$11,514	3.2	1.2
Women	N/A	4	0.2	0.0	\$20,421	2.5	1.0
Women	Total	2,130	100.0	45.6	\$17,613	3.4	1.5
Men	00-19	242	10.5	0.0	\$4,348	2.7	1.8
Men	20-24	216	9.3	0.0	\$17,868	3.1	1.9
Men	25-34	412	17.8	0.0	\$30,819	3.4	1.6
Men	35-44	415	18.0	0.0	\$40,329	3.5	1.4
Men	45-54	517	22.4	0.0	\$45,572	3.6	1.3
Men	55-64	363	15.7	0.0	\$40,638	3.5	1.2
Men	65-Up	146	6.3	0.0	\$19,571	3.0	1.2
Men	Total	2,311	100.0	49.5	\$32,677	3.4	1.5
N/A	N/A	231	100.0	0.0	\$8,073	1.8	1.1
N/A	Total	231	100.0	4.9	\$8,073	1.8	1.1
Total	00-19	467	10.0	0.0	\$3,895	2.7	1.8
Total	20-24	454	9.7	0.0	\$12,965	3.0	1.9
Total	25-34	740	15.8	0.0	\$24,410	3.3	1.6
Total	35-44	800	17.1	0.0	\$31,199	3.6	1.4
Total	45-54	1,024	21.9	0.0	\$35,121	3.6	1.3
Total	55-64	703	15.0	0.0	\$31,599	3.6	1.2
Total	65-Up	249	5.3	0.0	\$16,238	3.1	1.2
Total	N/A	235	5.0	0.0	\$8,283	1.8	1.1
Total	Total	4,672	100.0	100.0	\$24,592	3.3	1.5

Note: Persons worked at any time during the year.

County Determination: Based on county of employment in which the person made the most money in the year.

N/A: Represents persons with demographic data that is unavailable.

N/A = Nonresidents, individuals for whom demographic data are not available.

Source: Demographics of Persons Working in Wyoming by County, Industry, Age, & Gender, 2000-2018.

Research & Planning, Wyoming Department of Workforce Services.

Prepared by M. Moore, Research & Planning, WY DWS, 7/31/19.

Average Earnings by Age and Gender with Place of Work in Washakie County in 2007

Gender	Age Group	Number	Age Percent	Gender Percent	Average Annual Wage	Average Quarters Worked	Average Annual Employers
Women	00-19	244	11.4	0.0	\$3,713	2.7	1.6
Women	20-24	182	8.5	0.0	\$10,057	3.0	1.8
Women	25-34	344	16.1	0.0	\$17,867	3.3	1.5
Women	35-44	394	18.5	0.0	\$22,710	3.6	1.4
Women	45-54	500	23.4	0.0	\$27,277	3.6	1.4
Women	55-64	354	16.6	0.0	\$24,048	3.6	1.2
Women	65-Up	110	5.2	0.0	\$13,683	3.2	1.1
Women	N/A	5	0.2	0.0	\$14,360	2.4	1.4
Women	Total	2,133	100.0	44.3	\$19,484	3.4	1.4
Men	00-19	228	9.5	0.0	\$4,104	2.6	1.7
Men	20-24	244	10.2	0.0	\$16,372	3.1	1.9
Men	25-34	433	18.1	0.0	\$31,742	3.4	1.6
Men	35-44	413	17.2	0.0	\$45,182	3.6	1.4
Men	45-54	529	22.1	0.0	\$48,999	3.6	1.2
Men	55-64	388	16.2	0.0	\$42,151	3.5	1.2
Men	65-Up	158	6.6	0.0	\$19,826	2.8	1.2
Men	N/A	3	0.1	0.0	\$1,676	1.0	1.0
Men	Total	2,395	100.0	49.8	\$34,549	3.4	1.4
N/A	N/A	285	100.0	0.0	\$14,360	2.0	1.1
N/A	Total	285	100.0	5.9	\$14,360	2.0	1.1
Total	00-19	472	9.8	0.0	\$3,902	2.7	1.6
Total	20-24	426	8.9	0.0	\$13,674	3.0	1.8
Total	25-34	777	16.1	0.0	\$25,599	3.4	1.6
Total	35-44	807	16.8	0.0	\$34,210	3.6	1.4
Total	45-54	1,029	21.4	0.0	\$38,444	3.6	1.3
Total	55-64	742	15.4	0.0	\$33,514	3.6	1.2
Total	65-Up	268	5.6	0.0	\$17,305	3.0	1.2
Total	N/A	292	6.1	0.0	\$14,273	2.0	1.1
Total	Total	4,813	100.0	100.0	\$26,677	3.3	1.4

Note: Persons worked at any time during the year.

County Determination: Based on county of employment in which the person made the most money in the year.

N/A: Represents persons with demographic data that is unavailable.

N/A = Nonresidents, individuals for whom demographic data are not available.

Source: Demographics of Persons Working in Wyoming by County, Industry, Age, & Gender, 2000-2018.

Research & Planning, Wyoming Department of Workforce Services.

Prepared by M. Moore, Research & Planning, WY DWS, 7/31/19.

Average Earnings by Age and Gender with Place of Work in Washakie County in 2008

Gender	Age Group	Number	Age Percent	Gender Percent	Average Annual Wage	Average Quarters Worked	Average Annual Employers
Women	00-19	232	10.8	0.0	\$3,960	2.8	1.8
Women	20-24	190	8.8	0.0	\$11,238	3.0	1.8
Women	25-34	356	16.5	0.0	\$18,502	3.4	1.6
Women	35-44	370	17.2	0.0	\$25,550	3.6	1.4
Women	45-54	509	23.7	0.0	\$27,762	3.7	1.3
Women	55-64	370	17.2	0.0	\$24,959	3.6	1.2
Women	65-Up	122	5.7	0.0	\$16,265	3.4	1.2
Women	N/A	3	0.1	0.0	\$12,437	2.0	1.3
Women	Total	2,152	100.0	44.9	\$20,670	3.4	1.5
Men	00-19	223	9.4	0.0	\$5,019	2.7	1.7
Men	20-24	241	10.1	0.0	\$17,009	3.0	1.9
Men	25-34	431	18.1	0.0	\$35,340	3.4	1.5
Men	35-44	377	15.8	0.0	\$47,188	3.6	1.4
Men	45-54	523	22.0	0.0	\$51,373	3.6	1.2
Men	55-64	419	17.6	0.0	\$45,571	3.5	1.2
Men	65-Up	165	6.9	0.0	\$23,206	3.0	1.3
Men	N/A						
Men	Total	2,380	100.0	49.7	\$36,988	3.4	1.4
N/A	N/A	261	100.0	0.0	\$12,868	1.8	1.2
N/A	Total	261	100.0	5.4	\$12,868	1.8	1.2
Total	00-19	455	9.5	0.0	\$4,479	2.8	1.7
Total	20-24	431	9.0	0.0	\$14,465	3.0	1.8
Total	25-34	787	16.4	0.0	\$27,723	3.4	1.6
Total	35-44	747	15.6	0.0	\$36,471	3.6	1.4
Total	45-54	1,032	21.5	0.0	\$39,728	3.6	1.3
Total	55-64	789	16.5	0.0	\$35,905	3.6	1.2
Total	65-Up	287	6.0	0.0	\$20,255	3.2	1.2
Total	N/A	265	5.5	0.0	\$12,817	1.8	1.2
Total	Total	4,793	100.0	100.0	\$28,348	3.3	1.4

Note: Persons worked at any time during the year.

County Determination: Based on county of employment in which the person made the most money in the year.

N/A: Represents persons with demographic data that is unavailable.

N/A = Nonresidents, individuals for whom demographic data are not available.

Source: Demographics of Persons Working in Wyoming by County, Industry, Age, & Gender, 2000-2018.

Research & Planning, Wyoming Department of Workforce Services.

Prepared by M. Moore, Research & Planning, WY DWS, 7/31/19.

Average Earnings by Age and Gender with Place of Work in Washakie County in 2009

Gender	Age Group	Number	Age Percent	Gender Percent	Average Annual Wage	Average Quarters Worked	Average Annual Employers
Women	00-19	199	9.4	0.0	\$4,214	2.9	1.6
Women	20-24	199	9.4	0.0	\$9,967	2.9	1.6
Women	25-34	361	17.0	0.0	\$18,752	3.3	1.5
Women	35-44	361	17.0	0.0	\$25,495	3.6	1.4
Women	45-54	508	23.9	0.0	\$28,853	3.7	1.3
Women	55-64	374	17.6	0.0	\$26,351	3.7	1.2
Women	65-Up	122	5.7	0.0	\$16,429	3.3	1.1
Women	N/A	3	0.1	0.0	\$16,081	3.5	1.0
Women	Total	2,126	100.0	45.0	\$21,328	3.4	1.4
Men	00-19	204	8.8	0.0	\$5,025	2.8	1.5
Men	20-24	229	9.8	0.0	\$14,051	2.9	1.7
Men	25-34	435	18.7	0.0	\$31,586	3.4	1.4
Men	35-44	389	16.7	0.0	\$42,433	3.5	1.3
Men	45-54	495	21.3	0.0	\$48,824	3.6	1.2
Men	55-64	417	17.9	0.0	\$44,291	3.5	1.2
Men	65-Up	155	6.7	0.0	\$25,681	3.1	1.2
Men	N/A						
Men	Total	2,325	100.0	49.2	\$34,891	3.4	1.3
N/A	N/A	274	100.0	0.0	\$12,074	1.9	1.1
N/A	Total	274	100.0	5.8	\$12,074	1.9	1.1
Total	00-19	403	8.5	0.0	\$4,624	2.9	1.6
Total	20-24	428	9.1	0.0	\$12,152	2.9	1.6
Total	25-34	796	16.8	0.0	\$25,766	3.4	1.4
Total	35-44	750	15.9	0.0	\$34,280	3.6	1.3
Total	45-54	1,003	21.2	0.0	\$38,709	3.6	1.3
Total	55-64	791	16.7	0.0	\$35,809	3.6	1.2
Total	65-Up	277	5.9	0.0	\$21,606	3.2	1.2
Total	N/A	277	5.9	0.0	\$12,108	1.9	1.1
Total	Total	4,725	100.0	100.0	\$27,465	3.3	1.3

Note: Persons worked at any time during the year.

County Determination: Based on county of employment in which the person made the most money in the year.

N/A: Represents persons with demographic data that is unavailable.

N/A = Nonresidents, individuals for whom demographic data are not available.

Source: Demographics of Persons Working in Wyoming by County, Industry, Age, & Gender, 2000-2018.

Research & Planning, Wyoming Department of Workforce Services.

Prepared by M. Moore, Research & Planning, WY DWS, 7/31/19.

Average Earnings by Age and Gender with Place of Work in Washakie County in 2010

Gender	Age Group	Number	Age Percent	Gender Percent	Average Annual Wage	Average Quarters Worked	Average Annual Employers
Women	00-19	199	9.1	0.0	\$3,522	2.7	1.5
Women	20-24	207	9.5	0.0	\$10,700	3.0	1.6
Women	25-34	376	17.2	0.0	\$18,133	3.2	1.4
Women	35-44	357	16.3	0.0	\$26,806	3.6	1.3
Women	45-54	503	23.0	0.0	\$27,973	3.6	1.3
Women	55-64	401	18.3	0.0	\$26,108	3.6	1.2
Women	65-Up	145	6.6	0.0	\$14,747	3.3	1.1
Women	N/A	3	0.1	0.0	\$24,058	3.0	1.0
Women	Total	2,190	100.0	46.0	\$21,018	3.4	1.3
Men	00-19	200	8.5	0.0	\$4,563	2.5	1.5
Men	20-24	233	9.9	0.0	\$14,661	2.7	1.5
Men	25-34	453	19.3	0.0	\$32,413	3.4	1.5
Men	35-44	390	16.6	0.0	\$41,448	3.6	1.3
Men	45-54	469	20.0	0.0	\$49,282	3.7	1.2
Men	55-64	432	18.4	0.0	\$45,982	3.6	1.2
Men	65-Up	171	7.3	0.0	\$23,141	3.2	1.2
Men	Total	2,348	100.0	49.3	\$34,971	3.4	1.3
N/A	N/A	221	100.0	0.0	\$14,695	2.2	1.1
N/A	Total	221	100.0	4.6	\$14,695	2.2	1.1
Total	00-19	399	8.4	0.0	\$4,044	2.6	1.5
Total	20-24	440	9.2	0.0	\$12,797	2.8	1.5
Total	25-34	829	17.4	0.0	\$25,936	3.3	1.4
Total	35-44	747	15.7	0.0	\$34,451	3.6	1.3
Total	45-54	972	20.4	0.0	\$38,255	3.6	1.2
Total	55-64	833	17.5	0.0	\$36,415	3.6	1.2
Total	65-Up	316	6.6	0.0	\$19,289	3.2	1.2
Total	N/A	223	4.7	0.0	\$14,779	2.2	1.1
Total	Total	4,759	100.0	100.0	\$27,609	3.3	1.3

Note: Persons worked at any time during the year.

County Determination: Based on county of employment in which the person made the most money in the year.

N/A: Represents persons with demographic data that is unavailable.

N/A = Nonresidents, individuals for whom demographic data are not available.

Source: Demographics of Persons Working in Wyoming by County, Industry, Age, & Gender, 2000-2018.

Research & Planning, Wyoming Department of Workforce Services.

Prepared by M. Moore, Research & Planning, WY DWS, 7/31/19.

Average Earnings by Age and Gender with Place of Work in Washakie County in 2011

Gender	Age Group	Number	Age Percent	Gender Percent	Average Annual Wage	Average Quarters Worked	Average Annual Employers
Women	00-19	185	8.6	0.0	\$3,322	2.6	1.5
Women	20-24	201	9.3	0.0	\$10,430	3.0	1.8
Women	25-34	410	19.0	0.0	\$18,567	3.3	1.5
Women	35-44	328	15.2	0.0	\$26,950	3.5	1.5
Women	45-54	498	23.1	0.0	\$28,767	3.7	1.3
Women	55-64	393	18.2	0.0	\$26,737	3.6	1.3
Women	65-Up	140	6.5	0.0	\$14,268	3.4	1.1
Women	N/A	5	0.2	0.0	\$15,083	2.4	1.0
Women	Total	2,160	100.0	46.1	\$21,329	3.4	1.4
Men	00-19	176	7.6	0.0	\$5,057	2.6	1.6
Men	20-24	226	9.8	0.0	\$18,428	2.9	1.6
Men	25-34	432	18.8	0.0	\$34,960	3.4	1.4
Men	35-44	396	17.2	0.0	\$45,355	3.6	1.3
Men	45-54	458	19.9	0.0	\$50,097	3.6	1.2
Men	55-64	430	18.7	0.0	\$48,260	3.5	1.2
Men	65-Up	185	8.0	0.0	\$23,252	3.0	1.2
Men	Total	2,303	100.0	49.2	\$37,393	3.3	1.3
N/A	N/A	222	100.0	0.0	\$16,695	2.2	1.1
N/A	Total	222	100.0	4.7	\$16,695	2.2	1.1
Total	00-19	361	7.7	0.0	\$4,168	2.6	1.5
Total	20-24	427	9.1	0.0	\$14,663	3.0	1.7
Total	25-34	842	18.0	0.0	\$26,978	3.3	1.5
Total	35-44	724	15.5	0.0	\$37,017	3.6	1.4
Total	45-54	956	20.4	0.0	\$38,986	3.6	1.3
Total	55-64	823	17.6	0.0	\$37,982	3.6	1.2
Total	65-Up	325	6.9	0.0	\$19,382	3.2	1.2
Total	N/A	227	4.8	0.0	\$16,660	2.2	1.1
Total	Total	4,685	100.0	100.0	\$29,006	3.3	1.4

Note: Persons worked at any time during the year.

County Determination: Based on county of employment in which the person made the most money in the year.

N/A: Represents persons with demographic data that is unavailable.

N/A = Nonresidents, individuals for whom demographic data are not available.

Source: Demographics of Persons Working in Wyoming by County, Industry, Age, & Gender, 2000-2018.

Research & Planning, Wyoming Department of Workforce Services.

Prepared by M. Moore, Research & Planning, WY DWS, 7/31/19.

Average Earnings by Age and Gender with Place of Work in Washakie County in 2012

Gender	Age Group	Number	Age Percent	Gender Percent	Average Annual Wage	Average Quarters Worked	Average Annual Employers
Women	00-19	189	8.8	0.0	\$3,179	2.5	1.6
Women	20-24	195	9.1	0.0	\$10,677	3.0	1.7
Women	25-34	396	18.5	0.0	\$19,901	3.3	1.5
Women	35-44	336	15.7	0.0	\$26,563	3.5	1.5
Women	45-54	461	21.5	0.0	\$29,715	3.7	1.3
Women	55-64	395	18.5	0.0	\$28,068	3.6	1.3
Women	65-Up	165	7.7	0.0	\$15,155	3.3	1.2
Women	N/A	3	0.1	0.0	\$10,454	2.3	1.3
Women	Total	2,140	100.0	46.1	\$21,872	3.4	1.4
Men	00-19	175	7.6	0.0	\$5,392	2.6	1.5
Men	20-24	198	8.6	0.0	\$18,884	3.0	1.7
Men	25-34	449	19.6	0.0	\$34,575	3.4	1.4
Men	35-44	407	17.8	0.0	\$47,044	3.6	1.4
Men	45-54	456	19.9	0.0	\$50,675	3.6	1.2
Men	55-64	418	18.2	0.0	\$50,656	3.6	1.2
Men	65-Up	188	8.2	0.0	\$24,466	3.1	1.1
Men	Total	2,291	100.0	49.4	\$38,514	3.4	1.4
N/A	N/A	210	100.0	0.0	\$19,177	2.4	1.2
N/A	Total	210	100.0	4.5	\$19,177	2.4	1.2
Total	00-19	364	7.8	0.0	\$4,243	2.6	1.5
Total	20-24	393	8.5	0.0	\$14,812	3.0	1.7
Total	25-34	845	18.2	0.0	\$27,698	3.4	1.5
Total	35-44	743	16.0	0.0	\$37,782	3.5	1.4
Total	45-54	917	19.8	0.0	\$40,138	3.6	1.3
Total	55-64	813	17.5	0.0	\$39,682	3.6	1.2
Total	65-Up	353	7.6	0.0	\$20,114	3.2	1.2
Total	N/A	213	4.6	0.0	\$19,054	2.4	1.2
Total	Total	4,641	100.0	100.0	\$29,965	3.3	1.4

Note: Persons worked at any time during the year.

County Determination: Based on county of employment in which the person made the most money in the year.

N/A: Represents persons with demographic data that is unavailable.

N/A = Nonresidents, individuals for whom demographic data are not available.

Source: Demographics of Persons Working in Wyoming by County, Industry, Age, & Gender, 2000-2018.

Research & Planning, Wyoming Department of Workforce Services.

Prepared by M. Moore, Research & Planning, WY DWS, 7/31/19.

Average Earnings by Age and Gender with Place of Work in Washakie County in 2013

Gender	Age Group	Number	Age Percent	Gender Percent	Average Annual Wage	Average Quarters Worked	Average Annual Employers
Women	00-19	180	8.7	0.0	\$3,654	2.6	1.3
Women	20-24	191	9.2	0.0	\$10,172	3.0	1.6
Women	25-34	355	17.2	0.0	\$21,809	3.4	1.5
Women	35-44	353	17.1	0.0	\$27,166	3.5	1.4
Women	45-54	416	20.1	0.0	\$30,775	3.6	1.3
Women	55-64	399	19.3	0.0	\$29,362	3.7	1.3
Women	65-Up	168	8.1	0.0	\$17,141	3.3	1.1
Women	N/A	3	0.1	0.0	\$15,080	3.0	1.7
Women	Total	2,065	100.0	43.2	\$22,942	3.4	1.4
Men	00-19	170	7.3	0.0	\$4,315	2.4	1.4
Men	20-24	195	8.4	0.0	\$18,243	2.9	1.6
Men	25-34	436	18.8	0.0	\$33,397	3.3	1.4
Men	35-44	439	18.9	0.0	\$45,291	3.5	1.3
Men	45-54	452	19.5	0.0	\$50,584	3.6	1.3
Men	55-64	423	18.2	0.0	\$51,627	3.6	1.2
Men	65-Up	205	8.8	0.0	\$26,584	3.1	1.2
Men	Total	2,320	100.0	48.6	\$38,313	3.3	1.3
N/A	N/A	392	100.0	0.0	\$10,889	1.8	1.1
N/A	Total	392	100.0	8.2	\$10,889	1.8	1.1
Total	00-19	350	7.3	0.0	\$3,975	2.5	1.4
Total	20-24	386	8.1	0.0	\$14,250	3.0	1.6
Total	25-34	791	16.6	0.0	\$28,196	3.4	1.4
Total	35-44	792	16.6	0.0	\$37,213	3.5	1.4
Total	45-54	868	18.2	0.0	\$41,090	3.6	1.3
Total	55-64	822	17.2	0.0	\$40,820	3.6	1.2
Total	65-Up	373	7.8	0.0	\$22,331	3.2	1.2
Total	N/A	395	8.3	0.0	\$10,921	1.9	1.1
Total	Total	4,777	100.0	100.0	\$29,418	3.2	1.3

Note: Persons worked at any time during the year.

County Determination: Based on county of employment in which the person made the most money in the year.

N/A: Represents persons with demographic data that is unavailable.

N/A = Nonresidents, individuals for whom demographic data are not available.

Source: Demographics of Persons Working in Wyoming by County, Industry, Age, & Gender, 2000-2018.

Research & Planning, Wyoming Department of Workforce Services.

Prepared by M. Moore, Research & Planning, WY DWS, 7/31/19.

Average Earnings by Age and Gender with Place of Work in Washakie County in 2014

Gender	Age Group	Number	Age Percent	Gender Percent	Average Annual Wage	Average Quarters Worked	Average Annual Employers
Women	00-19	181	8.8	0.0	\$4,281	2.7	1.5
Women	20-24	163	8.0	0.0	\$11,270	3.1	1.8
Women	25-34	354	17.3	0.0	\$23,177	3.4	1.5
Women	35-44	348	17.0	0.0	\$27,570	3.5	1.5
Women	45-54	420	20.5	0.0	\$30,576	3.7	1.4
Women	55-64	409	20.0	0.0	\$29,599	3.6	1.2
Women	65-Up	172	8.4	0.0	\$17,455	3.3	1.1
Women	N/A	3	0.1	0.0	\$26,067	3.3	1.7
Women	Total	2,050	100.0	44.7	\$23,629	3.4	1.4
Men	00-19	169	7.5	0.0	\$4,752	2.4	1.4
Men	20-24	177	7.8	0.0	\$18,701	3.0	1.7
Men	25-34	439	19.4	0.0	\$36,748	3.5	1.5
Men	35-44	427	18.8	0.0	\$49,570	3.6	1.3
Men	45-54	407	18.0	0.0	\$53,857	3.7	1.3
Men	55-64	440	19.4	0.0	\$51,611	3.5	1.2
Men	65-Up	208	9.2	0.0	\$29,219	3.2	1.2
Men	Total	2,267	100.0	49.4	\$40,635	3.4	1.3
N/A	N/A	274	100.0	0.0	\$19,054	2.2	1.1
N/A	Total	274	100.0	6.0	\$19,054	2.2	1.1
Total	00-19	350	7.6	0.0	\$4,508	2.6	1.5
Total	20-24	340	7.4	0.0	\$15,139	3.1	1.8
Total	25-34	793	17.3	0.0	\$30,690	3.5	1.5
Total	35-44	775	16.9	0.0	\$39,691	3.6	1.4
Total	45-54	827	18.0	0.0	\$42,034	3.7	1.3
Total	55-64	849	18.5	0.0	\$41,007	3.5	1.2
Total	65-Up	380	8.3	0.0	\$23,895	3.2	1.2
Total	N/A	277	6.0	0.0	\$19,130	2.2	1.1
Total	Total	4,591	100.0	100.0	\$31,753	3.3	1.4

Note: Persons worked at any time during the year.

County Determination: Based on county of employment in which the person made the most money in the year.

N/A: Represents persons with demographic data that is unavailable.

N/A = Nonresidents, individuals for whom demographic data are not available.

Source: Demographics of Persons Working in Wyoming by County, Industry, Age, & Gender, 2000-2018.

Research & Planning, Wyoming Department of Workforce Services.

Prepared by M. Moore, Research & Planning, WY DWS, 7/31/19.

Average Earnings by Age and Gender with Place of Work in Washakie County in 2015

Gender	Age Group	Number	Age Percent	Gender Percent	Average Annual Wage	Average Quarters Worked	Average Annual Employers
Women	00-19	174	8.6	0.0	\$3,685	2.6	1.5
Women	20-24	162	8.0	0.0	\$12,292	3.2	1.8
Women	25-34	354	17.4	0.0	\$22,673	3.4	1.5
Women	35-44	391	19.3	0.0	\$27,772	3.5	1.5
Women	45-54	379	18.7	0.0	\$31,932	3.7	1.3
Women	55-64	386	19.0	0.0	\$30,796	3.7	1.2
Women	65-Up	178	8.8	0.0	\$17,467	3.3	1.1
Women	N/A	5	0.2	0.0	\$28,209	3.0	1.2
Women	Total	2,029	100.0	44.1	\$24,030	3.4	1.4
Men	00-19	179	7.8	0.0	\$4,810	2.4	1.4
Men	20-24	179	7.8	0.0	\$16,611	2.9	1.7
Men	25-34	430	18.7	0.0	\$34,447	3.4	1.5
Men	35-44	431	18.8	0.0	\$46,963	3.6	1.3
Men	45-54	430	18.7	0.0	\$49,374	3.6	1.3
Men	55-64	433	18.9	0.0	\$57,115	3.6	1.2
Men	65-Up	214	9.3	0.0	\$27,886	3.1	1.2
Men	Total	2,296	100.0	49.9	\$39,554	3.4	1.3
N/A	N/A	279	100.0	0.0	\$20,761	2.2	1.1
N/A	Total	279	100.0	6.1	\$20,761	2.2	1.1
Total	00-19	353	7.7	0.0	\$4,255	2.5	1.4
Total	20-24	341	7.4	0.0	\$14,559	3.0	1.8
Total	25-34	784	17.0	0.0	\$29,130	3.4	1.5
Total	35-44	822	17.9	0.0	\$37,835	3.5	1.4
Total	45-54	809	17.6	0.0	\$41,203	3.6	1.3
Total	55-64	819	17.8	0.0	\$44,711	3.6	1.2
Total	65-Up	392	8.5	0.0	\$23,155	3.2	1.2
Total	N/A	284	6.2	0.0	\$20,892	2.2	1.1
Total	Total	4,604	100.0	100.0	\$31,574	3.3	1.4

Note: Persons worked at any time during the year.

County Determination: Based on county of employment in which the person made the most money in the year.

N/A: Represents persons with demographic data that is unavailable.

N/A = Nonresidents, individuals for whom demographic data are not available.

Source: Demographics of Persons Working in Wyoming by County, Industry, Age, & Gender, 2000-2018.

Research & Planning, Wyoming Department of Workforce Services.

Prepared by M. Moore, Research & Planning, WY DWS, 7/31/19.

Average Earnings by Age and Gender with Place of Work in Washakie County in 2016

Gender	Age Group	Number	Age Percent	Gender Percent	Average Annual Wage	Average Quarters Worked	Average Annual Employers
Women	00-19	176	8.8	0.0	\$3,533	2.5	1.5
Women	20-24	159	7.9	0.0	\$12,635	3.1	1.7
Women	25-34	348	17.4	0.0	\$23,251	3.4	1.5
Women	35-44	366	18.3	0.0	\$29,566	3.6	1.4
Women	45-54	375	18.7	0.0	\$33,041	3.6	1.3
Women	55-64	384	19.2	0.0	\$32,082	3.7	1.1
Women	65-Up	185	9.2	0.0	\$15,665	3.3	1.1
Women	N/A	8	0.4	0.0	\$13,217	1.9	1.1
Women	Total	2,001	100.0	44.8	\$24,616	3.4	1.3
Men	00-19	167	7.6	0.0	\$4,365	2.5	1.4
Men	20-24	169	7.7	0.0	\$12,802	2.8	1.6
Men	25-34	398	18.0	0.0	\$33,574	3.4	1.4
Men	35-44	424	19.2	0.0	\$43,557	3.6	1.3
Men	45-54	412	18.7	0.0	\$49,411	3.7	1.3
Men	55-64	433	19.6	0.0	\$58,775	3.6	1.2
Men	65-Up	201	9.1	0.0	\$26,941	3.1	1.2
Men	N/A						
Men	Total	2,205	100.0	49.3	\$38,983	3.4	1.3
N/A	N/A	263	100.0	0.0	\$19,238	2.2	1.1
N/A	Total	263	100.0	5.9	\$19,238	2.2	1.1
Total	00-19	343	7.7	0.0	\$3,938	2.5	1.4
Total	20-24	328	7.3	0.0	\$12,721	2.9	1.6
Total	25-34	746	16.7	0.0	\$28,759	3.4	1.4
Total	35-44	790	17.7	0.0	\$37,075	3.6	1.4
Total	45-54	787	17.6	0.0	\$41,611	3.7	1.3
Total	55-64	817	18.3	0.0	\$46,229	3.7	1.2
Total	65-Up	386	8.6	0.0	\$21,537	3.2	1.1
Total	N/A	272	6.1	0.0	\$19,036	2.1	1.1
Total	Total	4,469	100.0	100.0	\$31,388	3.3	1.3

Note: Persons worked at any time during the year.

County Determination: Based on county of employment in which the person made the most money in the year.

N/A: Represents persons with demographic data that is unavailable.

N/A = Nonresidents, individuals for whom demographic data are not available.

Source: Demographics of Persons Working in Wyoming by County, Industry, Age, & Gender, 2000-2018.

Research & Planning, Wyoming Department of Workforce Services.

Prepared by M. Moore, Research & Planning, WY DWS, 7/31/19.

Average Earnings by Age and Gender with Place of Work in Washakie County in 2017

Gender	Age Group	Number	Age Percent	Gender Percent	Average Annual Wage	Average Quarters Worked	Average Annual Employers
Women	00-19	152	7.8	0.0	\$4,300	2.7	1.5
Women	20-24	160	8.2	0.0	\$12,041	3.1	1.8
Women	25-34	325	16.6	0.0	\$24,420	3.5	1.5
Women	35-44	372	19.1	0.0	\$29,983	3.6	1.5
Women	45-54	380	19.5	0.0	\$32,380	3.6	1.3
Women	55-64	380	19.5	0.0	\$33,779	3.7	1.2
Women	65-Up	179	9.2	0.0	\$16,702	3.4	1.1
Women	N/A	4	0.2	0.0	\$16,656	3.0	1.0
Women	Total	1,952	100.0	44.4	\$25,547	3.5	1.4
Men	00-19	178	8.3	0.0	\$5,002	2.6	1.4
Men	20-24	159	7.4	0.0	\$15,179	2.9	1.8
Men	25-34	374	17.5	0.0	\$36,565	3.5	1.5
Men	35-44	388	18.1	0.0	\$46,772	3.6	1.3
Men	45-54	398	18.6	0.0	\$50,699	3.7	1.3
Men	55-64	434	20.3	0.0	\$57,916	3.6	1.2
Men	65-Up	211	9.8	0.0	\$30,459	3.2	1.2
Men	N/A						
Men	Total	2,143	100.0	48.8	\$40,536	3.4	1.3
N/A	N/A	297	100.0	0.0	\$18,269	2.2	1.1
N/A	Total	297	100.0	6.8	\$18,269	2.2	1.1
Total	00-19	330	7.5	0.0	\$4,679	2.6	1.4
Total	20-24	319	7.3	0.0	\$13,605	3.0	1.8
Total	25-34	699	15.9	0.0	\$30,919	3.5	1.5
Total	35-44	760	17.3	0.0	\$38,554	3.6	1.4
Total	45-54	778	17.7	0.0	\$41,751	3.7	1.3
Total	55-64	814	18.5	0.0	\$46,648	3.6	1.2
Total	65-Up	390	8.9	0.0	\$24,145	3.3	1.2
Total	N/A	302	6.9	0.0	\$18,189	2.2	1.1
Total	Total	4,392	100.0	100.0	\$32,368	3.4	1.3

Note: Persons worked at any time during the year.

County Determination: Based on county of employment in which the person made the most money in the year.

N/A: Represents persons with demographic data that is unavailable.

N/A = Nonresidents, individuals for whom demographic data are not available.

Source: Demographics of Persons Working in Wyoming by County, Industry, Age, & Gender, 2000-2018.

Research & Planning, Wyoming Department of Workforce Services.

Prepared by M. Moore, Research & Planning, WY DWS, 7/31/19.

Average Earnings by Age and Gender with Place of Work in Washakie County in 2018

Gender	Age Group	Number	Age Percent	Gender Percent	Average Annual Wage	Average Quarters Worked	Average Annual Employers
Women	00-19	158	8.1	0.0	\$4,109	2.6	1.6
Women	20-24	158	8.1	0.0	\$13,752	3.1	1.7
Women	25-34	334	17.1	0.0	\$24,021	3.4	1.4
Women	35-44	375	19.2	0.0	\$30,463	3.6	1.4
Women	45-54	347	17.7	0.0	\$34,309	3.6	1.3
Women	55-64	398	20.3	0.0	\$34,801	3.7	1.2
Women	65-Up	184	9.4	0.0	\$15,274	3.4	1.2
Women	N/A	4	0.2	0.0	\$22,047	3.3	1.0
Women	Total	1,958	100.0	44.8	\$26,008	3.4	1.4
Men	00-19	175	8.3	0.0	\$6,110	2.7	1.5
Men	20-24	166	7.8	0.0	\$15,682	3.0	1.7
Men	25-34	362	17.1	0.0	\$36,490	3.4	1.5
Men	35-44	379	17.9	0.0	\$47,913	3.6	1.4
Men	45-54	388	18.3	0.0	\$53,022	3.7	1.3
Men	55-64	418	19.7	0.0	\$55,195	3.6	1.2
Men	65-Up	230	10.9	0.0	\$30,232	3.2	1.2
Men	Total	2,118	100.0	48.4	\$40,433	3.4	1.4
N/A	N/A	299	100.0	0.0	\$20,121	2.2	1.1
N/A	Total	299	100.0	6.8	\$20,121	2.2	1.1
Total	00-19	333	7.6	0.0	\$5,161	2.7	1.5
Total	20-24	324	7.4	0.0	\$14,741	3.1	1.7
Total	25-34	696	15.9	0.0	\$30,506	3.4	1.4
Total	35-44	754	17.2	0.0	\$39,234	3.6	1.4
Total	45-54	735	16.8	0.0	\$44,187	3.7	1.3
Total	55-64	816	18.7	0.0	\$45,248	3.7	1.2
Total	65-Up	414	9.5	0.0	\$23,584	3.3	1.2
Total	N/A	303	6.9	0.0	\$20,146	2.2	1.1
Total	Total	4,375	100.0	100.0	\$32,589	3.3	1.3

Note: Persons worked at any time during the year.

County Determination: Based on county of employment in which the person made the most money in the year.

N/A: Represents persons with demographic data that is unavailable.

N/A = Nonresidents, individuals for whom demographic data are not available.

Source: Demographics of Persons Working in Wyoming by County, Industry, Age, & Gender, 2000-2018.

Research & Planning, Wyoming Department of Workforce Services.

Prepared by M. Moore, Research & Planning, WY DWS, 7/31/19.