

Wyoming Financial Activities (NAICS 52-53) at a Glance, 2017

Demographics of Persons Working in Wyoming by County, Industry, Age, & Gender, 2000-2017

Table: Total Number of Persons Working in Financial Activities (NAICS 52-53) at Any Time by Gender and Age, 2016-2017

Gender	2016	2017	Change	
			N	%
Women	7,380	7,390	10	0.1
Men	4,431	4,576	145	3.3
Nonresidents	601	807	206	34.3
Total	12,412	12,773	361	2.9

Age	2016	2017	Change	
			N	%
00-19	249	224	-25	-10.0
20-24	993	918	-75	-7.6
25-34	2,768	2,859	91	3.3
35-44	2,394	2,553	159	6.6
45-54	2,276	2,200	-76	-3.3
55-64	2,254	2,304	50	2.2
65-Up	876	907	31	3.5
Nonresidents	602	808	206	34.2
Total	12,412	12,773	361	2.9

Women's Wages as % of Men's Wages
 Financial Activities (NAICS 52-53): 58.2%
 Total, All Industries: 62.7%

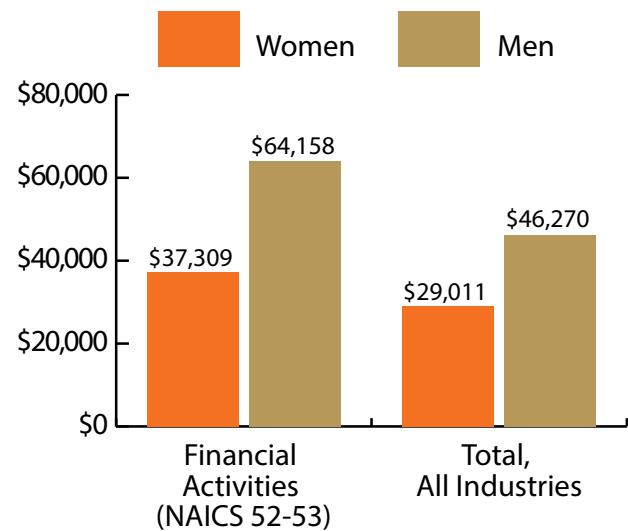


Figure: Average Annual Wages by Gender, 2017

Total = 12,773

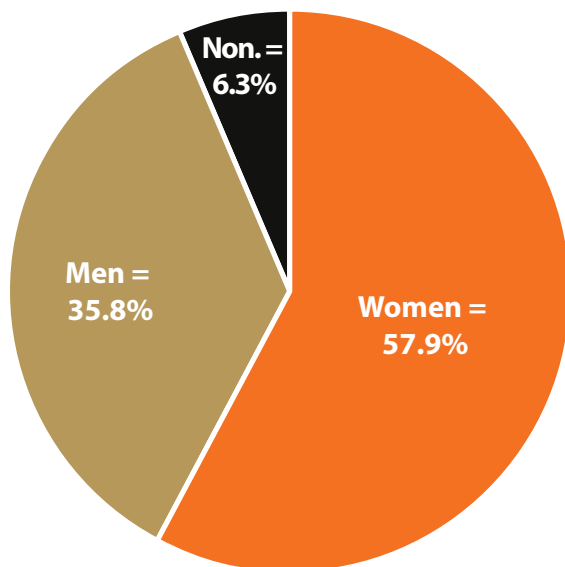


Figure: Persons Working by Gender, 2017

Total = 12,773

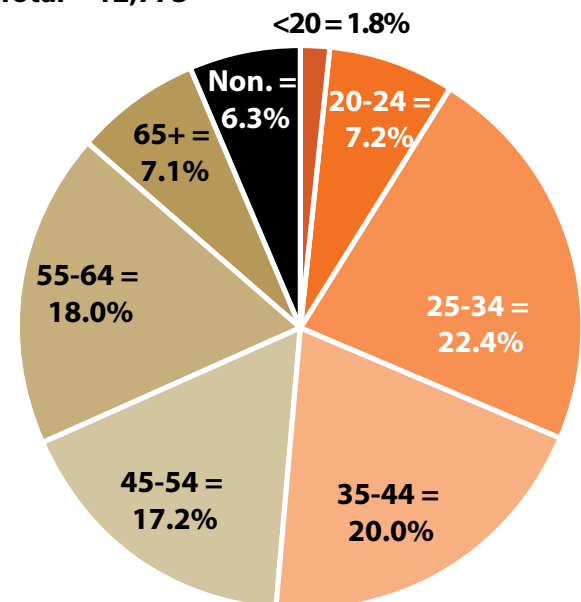


Figure: Persons Working by Age, 2017

Note: Nonresidents are individuals for whom demographic data are not available.
 Source: Demographics of Persons Working in Wyoming by County, Industry, Age, & Gender, 2000-2017. Research & Planning, Wyoming Department of Workforce Services. Prepared by M. Moore, Research & Planning, WY DWS, 6/12/18.

Persons Working in Financial Activities (NAICS 52-53) in Wyoming by Gender and Age, 2000-2017

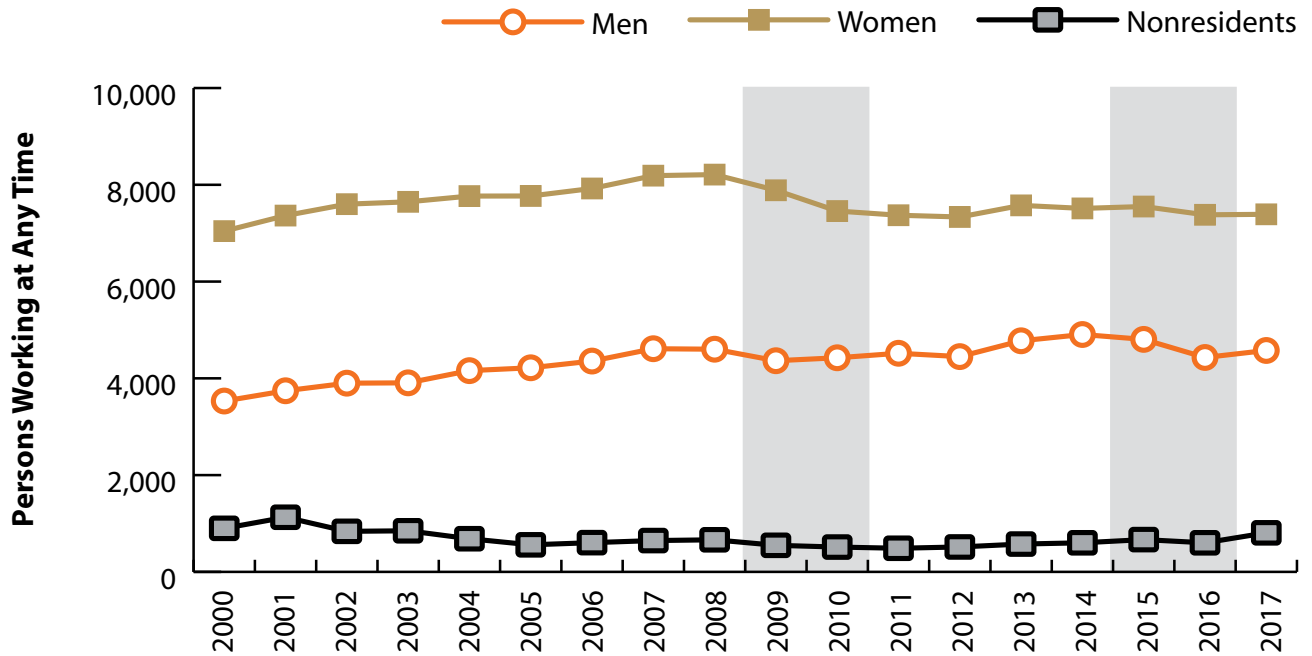


Figure: Persons Working in Financial Activities (NAICS 52-53) in Wyoming at Any Time by Gender, 2000-2017

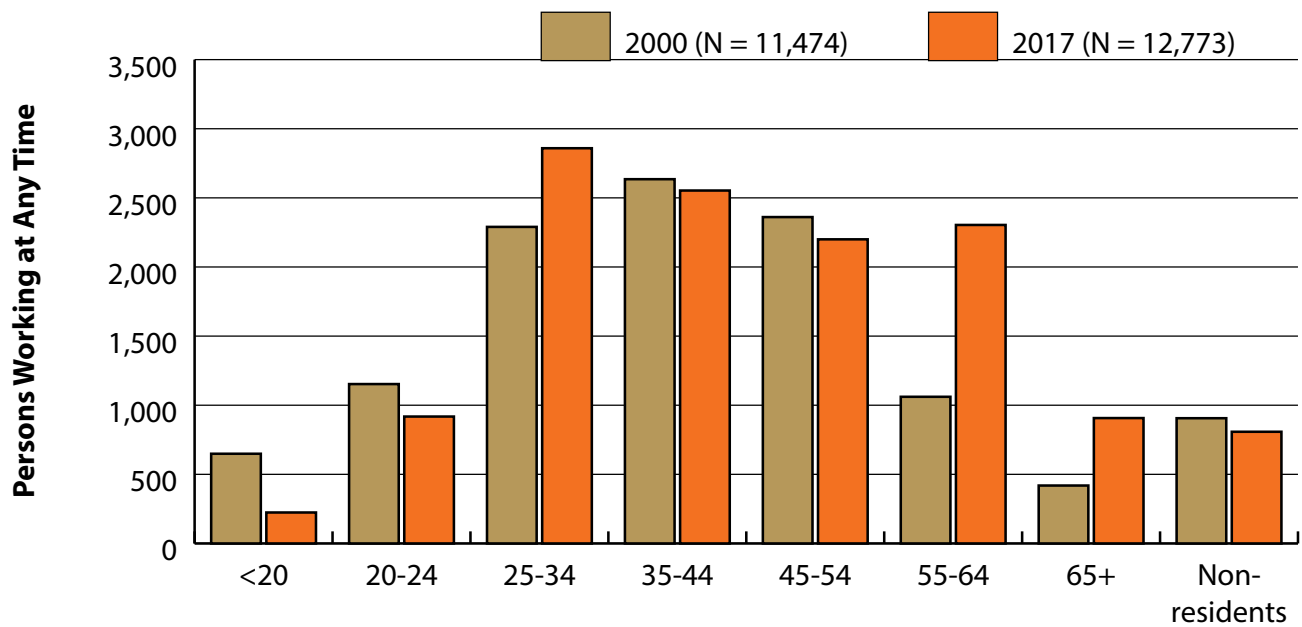


Figure: Persons Working in Financial Activities (NAICS 52-53) in Wyoming at Any Time by Age, 2000-2017

Note: Nonresidents are individuals for whom demographic data are not available.
 Shaded areas indicate periods of economic downturn: 2009Q1-2010Q1 and 2015Q2-2016Q4.
 Source: Demographics of Persons Working in Wyoming by County, Industry, Age, & Gender, 2000-2017. Research & Planning, Wyoming Department of Workforce Services. Prepared by M. Moore, Research & Planning, WY DWS, 6/12/18.

Wages for Persons Working in Financial Activities (NAICS 52-53) in Wyoming by Gender, 2000-2017

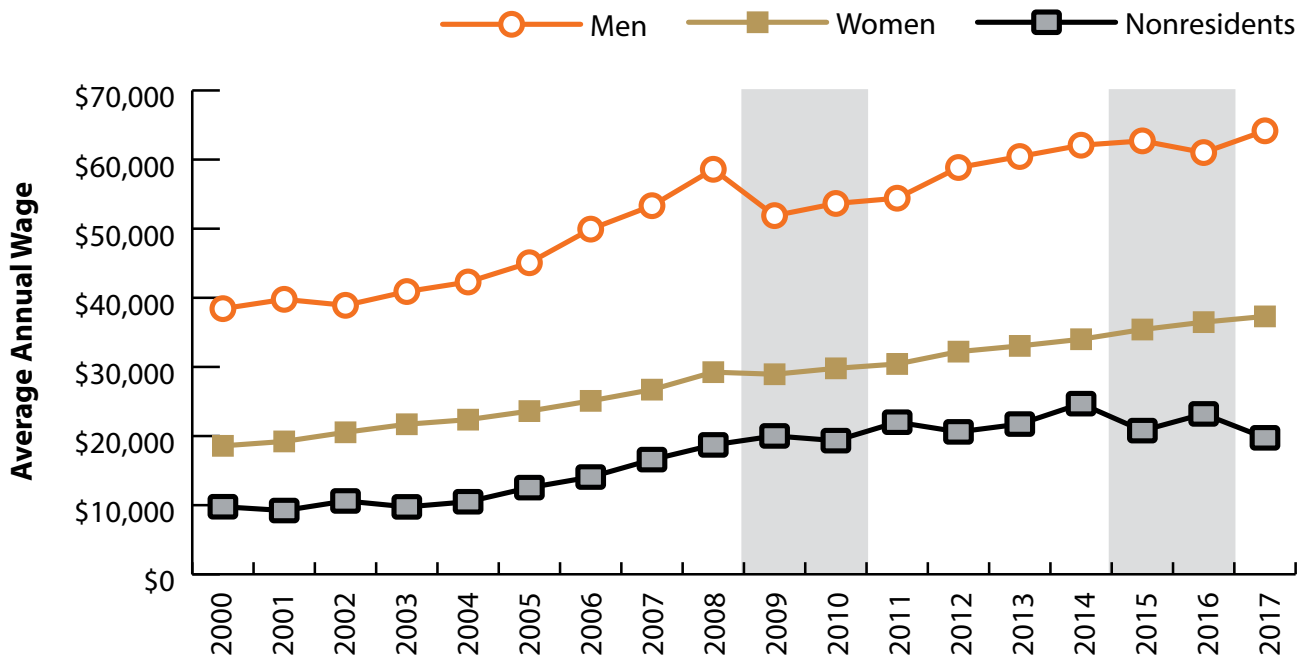


Figure: Average Annual Wage for Persons Working in Financial Activities (NAICS 52-53) in Wyoming at Any Time by Age, 2000-2017

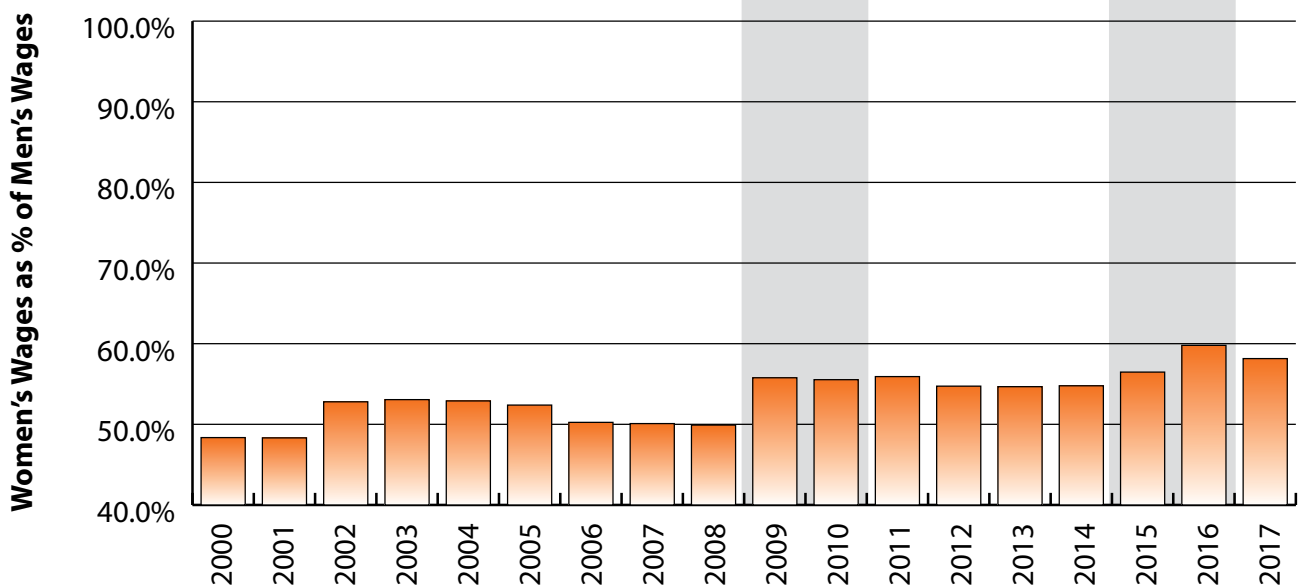


Figure: Women's Average Annual Wages as a Percent of Men's Wages for Persons Working in Financial Activities (NAICS 52-53) in Wyoming at Any Time by Age, 2000-2017

Note: Nonresidents are individuals for whom demographic data are not available.

Shaded areas indicate periods of economic downturn: 2009Q1-2010Q1 and 2015Q2-2016Q4.

Source: Demographics of Persons Working in Wyoming by County, Industry, Age, & Gender, 2000-2017. Research & Planning, Wyoming Department of Workforce Services. Prepared by M. Moore, Research & Planning, WY DWS, 6/12/18.

Average Earnings by Age and Gender in the 52 & 53 - Financial Activities Industry in 2000

Gender	Age Group	Number	Age Percent	Gender Percent	Average Annual Wage	Average Quarters Worked	Average Annual Employers
Women	00-19	370	5.3	0.0	\$3,798	2.8	1.7
Women	20-24	836	11.9	0.0	\$10,400	3.3	1.8
Women	25-34	1,555	22.1	0.0	\$17,374	3.5	1.5
Women	35-44	1,886	26.8	0.0	\$22,042	3.7	1.4
Women	45-54	1,554	22.1	0.0	\$23,840	3.7	1.3
Women	55-64	634	9.0	0.0	\$20,676	3.6	1.3
Women	65-Up	203	2.9	0.0	\$9,806	3.2	1.2
Women	N/A	5	0.1	0.0	\$9,080	1.6	1.0
Women	Total	7,043	100.0	61.4	\$18,583	3.5	1.5
Men	00-19	279	7.9	0.0	\$3,280	2.6	1.7
Men	20-24	317	9.0	0.0	\$11,597	3.0	1.8
Men	25-34	735	20.8	0.0	\$27,206	3.4	1.6
Men	35-44	749	21.2	0.0	\$43,274	3.5	1.3
Men	45-54	807	22.9	0.0	\$58,155	3.6	1.2
Men	55-64	427	12.1	0.0	\$54,897	3.5	1.2
Men	65-Up	216	6.1	0.0	\$38,360	3.2	1.2
Men	N/A	1	0.0	0.0	\$36,708	4.0	1.0
Men	Total	3,531	100.0	30.8	\$38,430	3.4	1.4
N/A	N/A	900	100.0	0.0	\$9,771	1.8	1.1
N/A	Total	900	100.0	7.8	\$9,771	1.8	1.1
Total	00-19	649	5.7	0.0	\$3,575	2.7	1.7
Total	20-24	1,153	10.0	0.0	\$10,729	3.2	1.8
Total	25-34	2,290	20.0	0.0	\$20,530	3.5	1.5
Total	35-44	2,635	23.0	0.0	\$28,077	3.6	1.4
Total	45-54	2,361	20.6	0.0	\$35,569	3.6	1.3
Total	55-64	1,061	9.2	0.0	\$34,448	3.6	1.2
Total	65-Up	419	3.7	0.0	\$24,526	3.2	1.2
Total	N/A	906	7.9	0.0	\$9,797	1.8	1.1
Total	Total	11,474	100.0	100.0	\$23,999	3.3	1.4

Note: Persons worked any time during the year.

Industry Determination: Based on the industry of employment in which the person made the most money in the year.

N/A: Represents persons with demographic data that are unavailable.

N/A = Nonresidents, individuals for whom demographic data are not available.

Source: Demographics of Persons Working in Wyoming by County, Industry, Age, & Gender, 2000-2017.

Research & Planning, Wyoming Department of Workforce Services.

Prepared by M. Moore, Research & Planning, WY DWS, 6/12/18.

Average Earnings by Age and Gender in the 52 & 53 - Financial Activities Industry in 2001

Gender	Age Group	Number	Age Percent	Gender Percent	Average Annual Wage	Average Quarters Worked	Average Annual Employers
Women	00-19	418	5.7	0.0	\$4,401	2.9	1.8
Women	20-24	892	12.1	0.0	\$10,792	3.2	1.9
Women	25-34	1,593	21.6	0.0	\$18,156	3.5	1.5
Women	35-44	1,892	25.7	0.0	\$22,749	3.6	1.4
Women	45-54	1,680	22.8	0.0	\$24,816	3.6	1.3
Women	55-64	687	9.3	0.0	\$20,446	3.6	1.2
Women	65-Up	200	2.7	0.0	\$11,530	3.3	1.1
Women	N/A	2	0.0	0.0	\$31,176	4.0	1.0
Women	Total	7,364	100.0	60.2	\$19,220	3.5	1.4
Men	00-19	283	7.6	0.0	\$3,910	2.6	1.8
Men	20-24	360	9.6	0.0	\$12,548	3.0	2.0
Men	25-34	783	20.9	0.0	\$29,401	3.4	1.5
Men	35-44	792	21.2	0.0	\$44,676	3.5	1.4
Men	45-54	853	22.8	0.0	\$58,309	3.5	1.2
Men	55-64	452	12.1	0.0	\$58,574	3.5	1.2
Men	65-Up	219	5.9	0.0	\$39,312	3.2	1.1
Men	N/A	1	0.0	0.0	\$38,063	4.0	1.0
Men	Total	3,743	100.0	30.6	\$39,778	3.3	1.4
N/A	N/A	1,129	100.0	0.0	\$9,222	1.6	1.1
N/A	Total	1,129	100.0	9.2	\$9,222	1.6	1.1
Total	00-19	701	5.7	0.0	\$4,203	2.8	1.8
Total	20-24	1,252	10.2	0.0	\$11,297	3.1	1.9
Total	25-34	2,376	19.4	0.0	\$21,862	3.4	1.5
Total	35-44	2,684	21.9	0.0	\$29,219	3.6	1.4
Total	45-54	2,533	20.7	0.0	\$36,095	3.6	1.3
Total	55-64	1,139	9.3	0.0	\$35,577	3.6	1.2
Total	65-Up	419	3.4	0.0	\$26,051	3.2	1.1
Total	N/A	1,132	9.3	0.0	\$9,287	1.6	1.1
Total	Total	12,236	100.0	100.0	\$24,586	3.3	1.4

Note: Persons worked any time during the year.

Industry Determination: Based on the industry of employment in which the person made the most money in the year.

N/A: Represents persons with demographic data that are unavailable.

N/A = Nonresidents, individuals for whom demographic data are not available.

Source: Demographics of Persons Working in Wyoming by County, Industry, Age, & Gender, 2000-2017.
Research & Planning, Wyoming Department of Workforce Services.

Prepared by M. Moore, Research & Planning, WY DWS, 6/12/18.

Average Earnings by Age and Gender in the 52 & 53 - Financial Activities Industry in 2002

Gender	Age Group	Number	Age Percent	Gender Percent	Average Annual Wage	Average Quarters Worked	Average Annual Employers
Women	00-19	416	5.5	0.0	\$4,276	2.9	1.7
Women	20-24	890	11.7	0.0	\$11,608	3.3	1.7
Women	25-34	1,658	21.8	0.0	\$19,462	3.5	1.5
Women	35-44	1,874	24.7	0.0	\$24,010	3.6	1.3
Women	45-54	1,766	23.2	0.0	\$26,353	3.7	1.3
Women	55-64	781	10.3	0.0	\$22,306	3.6	1.2
Women	65-Up	213	2.8	0.0	\$12,730	3.3	1.1
Women	N/A	2	0.0	0.0	\$36,313	4.0	2.0
Women	Total	7,600	100.0	61.6	\$20,542	3.5	1.4
Men	00-19	286	7.3	0.0	\$4,394	2.6	1.7
Men	20-24	435	11.2	0.0	\$12,794	3.1	1.8
Men	25-34	796	20.4	0.0	\$29,271	3.4	1.5
Men	35-44	793	20.3	0.0	\$41,940	3.5	1.4
Men	45-54	861	22.1	0.0	\$58,728	3.6	1.2
Men	55-64	487	12.5	0.0	\$56,787	3.5	1.2
Men	65-Up	239	6.1	0.0	\$42,161	3.2	1.2
Men	N/A	3	0.1	0.0	\$25,937	2.3	1.0
Men	Total	3,900	100.0	31.6	\$38,911	3.4	1.4
N/A	N/A	838	100.0	0.0	\$10,609	1.7	1.1
N/A	Total	838	100.0	6.8	\$10,609	1.7	1.1
Total	00-19	702	5.7	0.0	\$4,324	2.8	1.7
Total	20-24	1,325	10.7	0.0	\$11,997	3.2	1.7
Total	25-34	2,454	19.9	0.0	\$22,643	3.5	1.5
Total	35-44	2,667	21.6	0.0	\$29,341	3.6	1.4
Total	45-54	2,627	21.3	0.0	\$36,964	3.6	1.3
Total	55-64	1,268	10.3	0.0	\$35,549	3.6	1.2
Total	65-Up	452	3.7	0.0	\$28,292	3.3	1.2
Total	N/A	843	6.8	0.0	\$10,724	1.8	1.1
Total	Total	12,338	100.0	100.0	\$25,674	3.4	1.4

Note: Persons worked any time during the year.

Industry Determination: Based on the industry of employment in which the person made the most money in the year.

N/A: Represents persons with demographic data that are unavailable.

N/A = Nonresidents, individuals for whom demographic data are not available.

Source: Demographics of Persons Working in Wyoming by County, Industry, Age, & Gender, 2000-2017.
Research & Planning, Wyoming Department of Workforce Services.

Prepared by M. Moore, Research & Planning, WY DWS, 6/12/18.

Average Earnings by Age and Gender in the 52 & 53 - Financial Activities Industry in 2003

Gender	Age Group	Number	Age Percent	Gender Percent	Average Annual Wage	Average Quarters Worked	Average Annual Employers
Women	00-19	380	5.0	0.0	\$4,588	3.0	1.7
Women	20-24	939	12.3	0.0	\$12,223	3.3	1.8
Women	25-34	1,632	21.3	0.0	\$20,186	3.5	1.4
Women	35-44	1,770	23.1	0.0	\$25,725	3.6	1.3
Women	45-54	1,860	24.3	0.0	\$27,383	3.7	1.3
Women	55-64	834	10.9	0.0	\$24,323	3.6	1.2
Women	65-Up	229	3.0	0.0	\$13,213	3.4	1.2
Women	N/A	4	0.1	0.0	\$15,261	2.3	1.0
Women	Total	7,648	100.0	61.7	\$21,705	3.5	1.4
Men	00-19	265	6.8	0.0	\$4,585	2.6	1.6
Men	20-24	398	10.2	0.0	\$12,760	3.1	1.8
Men	25-34	824	21.1	0.0	\$31,422	3.4	1.5
Men	35-44	785	20.1	0.0	\$44,714	3.5	1.3
Men	45-54	855	21.9	0.0	\$59,500	3.6	1.2
Men	55-64	546	14.0	0.0	\$58,565	3.5	1.2
Men	65-Up	231	5.9	0.0	\$41,729	3.2	1.2
Men	N/A	3	0.1	0.0	\$12,781	1.7	1.0
Men	Total	3,907	100.0	31.5	\$40,904	3.4	1.4
N/A	N/A	849	100.0	0.0	\$9,752	1.7	1.1
N/A	Total	849	100.0	6.8	\$9,752	1.7	1.1
Total	00-19	645	5.2	0.0	\$4,587	2.8	1.7
Total	20-24	1,337	10.8	0.0	\$12,383	3.2	1.8
Total	25-34	2,456	19.8	0.0	\$23,956	3.5	1.5
Total	35-44	2,555	20.6	0.0	\$31,559	3.6	1.3
Total	45-54	2,715	21.9	0.0	\$37,497	3.6	1.3
Total	55-64	1,380	11.1	0.0	\$37,871	3.6	1.2
Total	65-Up	460	3.7	0.0	\$27,533	3.3	1.2
Total	N/A	856	6.9	0.0	\$9,788	1.7	1.1
Total	Total	12,404	100.0	100.0	\$26,934	3.4	1.4

Note: Persons worked any time during the year.

Industry Determination: Based on the industry of employment in which the person made the most money in the year.

N/A: Represents persons with demographic data that are unavailable.

N/A = Nonresidents, individuals for whom demographic data are not available.

Source: Demographics of Persons Working in Wyoming by County, Industry, Age, & Gender, 2000-2017.

Research & Planning, Wyoming Department of Workforce Services.

Prepared by M. Moore, Research & Planning, WY DWS, 6/12/18.

Average Earnings by Age and Gender in the 52 & 53 - Financial Activities Industry in 2004

Gender	Age Group	Number	Age Percent	Gender Percent	Average Annual Wage	Average Quarters Worked	Average Annual Employers
Women	00-19	382	4.9	0.0	\$4,786	3.0	1.7
Women	20-24	949	12.2	0.0	\$12,673	3.3	1.7
Women	25-34	1,696	21.8	0.0	\$20,100	3.5	1.5
Women	35-44	1,706	22.0	0.0	\$26,528	3.6	1.3
Women	45-54	1,881	24.2	0.0	\$28,747	3.7	1.3
Women	55-64	899	11.6	0.0	\$25,543	3.6	1.2
Women	65-Up	251	3.2	0.0	\$13,900	3.3	1.1
Women	N/A	3	0.0	0.0	\$6,924	1.3	1.0
Women	Total	7,767	100.0	61.6	\$22,370	3.5	1.4
Men	00-19	273	6.6	0.0	\$4,768	2.6	1.7
Men	20-24	416	10.0	0.0	\$13,741	3.1	2.0
Men	25-34	911	21.9	0.0	\$33,302	3.4	1.5
Men	35-44	792	19.0	0.0	\$45,937	3.5	1.4
Men	45-54	934	22.5	0.0	\$58,915	3.5	1.2
Men	55-64	589	14.2	0.0	\$63,020	3.6	1.2
Men	65-Up	241	5.8	0.0	\$40,824	3.3	1.2
Men	N/A	3	0.1	0.0	\$49,894	3.0	1.0
Men	Total	4,159	100.0	33.0	\$42,287	3.4	1.4
N/A	N/A	685	100.0	0.0	\$10,494	1.8	1.1
N/A	Total	685	100.0	5.4	\$10,494	1.8	1.1
Total	00-19	655	5.2	0.0	\$4,778	2.8	1.7
Total	20-24	1,365	10.8	0.0	\$12,998	3.3	1.8
Total	25-34	2,607	20.7	0.0	\$24,714	3.5	1.5
Total	35-44	2,498	19.8	0.0	\$32,682	3.6	1.3
Total	45-54	2,815	22.3	0.0	\$38,756	3.6	1.2
Total	55-64	1,488	11.8	0.0	\$40,378	3.6	1.2
Total	65-Up	492	3.9	0.0	\$27,089	3.3	1.2
Total	N/A	691	5.5	0.0	\$10,649	1.8	1.1
Total	Total	12,611	100.0	100.0	\$28,293	3.4	1.4

Note: Persons worked any time during the year.

Industry Determination: Based on the industry of employment in which the person made the most money in the year.

N/A: Represents persons with demographic data that are unavailable.

N/A = Nonresidents, individuals for whom demographic data are not available.

Source: Demographics of Persons Working in Wyoming by County, Industry, Age, & Gender, 2000-2017.
Research & Planning, Wyoming Department of Workforce Services.

Prepared by M. Moore, Research & Planning, WY DWS, 6/12/18.

Average Earnings by Age and Gender in the 52 & 53 - Financial Activities Industry in 2005

Gender	Age Group	Number	Age Percent	Gender Percent	Average Annual Wage	Average Quarters Worked	Average Annual Employers
Women	00-19	336	4.3	0.0	\$5,116	2.9	1.8
Women	20-24	929	12.0	0.0	\$13,123	3.3	1.8
Women	25-34	1,717	22.1	0.0	\$21,259	3.5	1.5
Women	35-44	1,616	20.8	0.0	\$27,824	3.6	1.4
Women	45-54	1,946	25.0	0.0	\$29,974	3.7	1.3
Women	55-64	951	12.2	0.0	\$27,329	3.7	1.2
Women	65-Up	274	3.5	0.0	\$13,659	3.3	1.1
Women	Total	7,769	100.0	61.9	\$23,611	3.5	1.4
Men	00-19	238	5.6	0.0	\$5,411	2.8	1.7
Men	20-24	438	10.4	0.0	\$15,926	3.1	1.8
Men	25-34	909	21.6	0.0	\$37,443	3.5	1.6
Men	35-44	821	19.5	0.0	\$50,838	3.5	1.4
Men	45-54	925	21.9	0.0	\$59,521	3.6	1.3
Men	55-64	629	14.9	0.0	\$62,319	3.6	1.2
Men	65-Up	256	6.1	0.0	\$45,694	3.2	1.2
Men	N/A	2	0.0	0.0	\$60,174	3.0	2.0
Men	Total	4,218	100.0	33.6	\$45,071	3.4	1.4
N/A	N/A	559	100.0	0.0	\$12,536	2.0	1.1
N/A	Total	559	100.0	4.5	\$12,536	2.0	1.1
Total	00-19	574	4.6	0.0	\$5,239	2.9	1.8
Total	20-24	1,367	10.9	0.0	\$14,021	3.2	1.8
Total	25-34	2,626	20.9	0.0	\$26,861	3.5	1.5
Total	35-44	2,437	19.4	0.0	\$35,577	3.6	1.4
Total	45-54	2,871	22.9	0.0	\$39,493	3.7	1.3
Total	55-64	1,580	12.6	0.0	\$41,259	3.6	1.2
Total	65-Up	530	4.2	0.0	\$29,133	3.3	1.2
Total	N/A	561	4.5	0.0	\$12,706	2.0	1.1
Total	Total	12,546	100.0	100.0	\$30,333	3.4	1.4

Note: Persons worked any time during the year.

Industry Determination: Based on the industry of employment in which the person made the most money in the year.

N/A: Represents persons with demographic data that are unavailable.

N/A = Nonresidents, individuals for whom demographic data are not available.

Source: Demographics of Persons Working in Wyoming by County, Industry, Age, & Gender, 2000-2017.
Research & Planning, Wyoming Department of Workforce Services.

Prepared by M. Moore, Research & Planning, WY DWS, 6/12/18.

Average Earnings by Age and Gender in the 52 & 53 - Financial Activities Industry in 2006

Gender	Age Group	Number	Age Percent	Gender Percent	Average Annual Wage	Average Quarters Worked	Average Annual Employers
Women	00-19	330	4.2	0.0	\$5,087	3.0	1.9
Women	20-24	901	11.4	0.0	\$13,871	3.3	1.9
Women	25-34	1,746	22.0	0.0	\$22,817	3.5	1.5
Women	35-44	1,580	19.9	0.0	\$29,383	3.6	1.4
Women	45-54	2,039	25.7	0.0	\$31,720	3.7	1.3
Women	55-64	1,042	13.1	0.0	\$28,211	3.7	1.2
Women	65-Up	285	3.6	0.0	\$15,030	3.4	1.2
Women	N/A	1	0.0	0.0	\$5,318	1.0	1.0
Women	Total	7,924	100.0	61.5	\$25,089	3.6	1.4
Men	00-19	237	5.4	0.0	\$6,393	2.7	1.6
Men	20-24	432	9.9	0.0	\$19,118	3.1	1.8
Men	25-34	970	22.3	0.0	\$42,075	3.5	1.5
Men	35-44	843	19.3	0.0	\$56,380	3.5	1.4
Men	45-54	917	21.0	0.0	\$67,122	3.6	1.3
Men	55-64	688	15.8	0.0	\$63,193	3.6	1.2
Men	65-Up	269	6.2	0.0	\$53,415	3.2	1.2
Men	N/A	1	0.0	0.0	\$50,433	4.0	1.0
Men	Total	4,357	100.0	33.8	\$49,934	3.4	1.4
N/A	N/A	604	100.0	0.0	\$14,069	2.1	1.2
N/A	Total	604	100.0	4.7	\$14,069	2.1	1.2
Total	00-19	567	4.4	0.0	\$5,633	2.9	1.7
Total	20-24	1,333	10.3	0.0	\$15,571	3.2	1.8
Total	25-34	2,716	21.1	0.0	\$29,695	3.5	1.5
Total	35-44	2,423	18.8	0.0	\$38,776	3.6	1.4
Total	45-54	2,956	22.9	0.0	\$42,702	3.7	1.3
Total	55-64	1,730	13.4	0.0	\$42,123	3.6	1.2
Total	65-Up	554	4.3	0.0	\$33,668	3.3	1.2
Total	N/A	606	4.7	0.0	\$14,114	2.1	1.2
Total	Total	12,885	100.0	100.0	\$32,973	3.5	1.4

Note: Persons worked any time during the year.

Industry Determination: Based on the industry of employment in which the person made the most money in the year.

N/A: Represents persons with demographic data that are unavailable.

N/A = Nonresidents, individuals for whom demographic data are not available.

Source: Demographics of Persons Working in Wyoming by County, Industry, Age, & Gender, 2000-2017.

Research & Planning, Wyoming Department of Workforce Services.

Prepared by M. Moore, Research & Planning, WY DWS, 6/12/18.

Average Earnings by Age and Gender in the 52 & 53 - Financial Activities Industry in 2007

Gender	Age Group	Number	Age Percent	Gender Percent	Average Annual Wage	Average Quarters Worked	Average Annual Employers
Women	00-19	333	4.1	0.0	\$5,478	2.9	2.0
Women	20-24	1,023	12.5	0.0	\$14,705	3.2	1.8
Women	25-34	1,830	22.3	0.0	\$24,138	3.5	1.5
Women	35-44	1,570	19.2	0.0	\$30,962	3.6	1.4
Women	45-54	2,017	24.6	0.0	\$34,483	3.7	1.3
Women	55-64	1,122	13.7	0.0	\$30,949	3.7	1.2
Women	65-Up	293	3.6	0.0	\$16,393	3.4	1.1
Women	N/A	1	0.0	0.0	\$12,885	3.0	1.0
Women	Total	8,189	100.0	60.9	\$26,712	3.5	1.4
Men	00-19	240	5.2	0.0	\$7,007	2.7	1.7
Men	20-24	458	9.9	0.0	\$22,110	3.2	1.9
Men	25-34	1,081	23.4	0.0	\$43,383	3.4	1.5
Men	35-44	880	19.1	0.0	\$60,285	3.6	1.4
Men	45-54	943	20.4	0.0	\$71,218	3.5	1.2
Men	55-64	741	16.1	0.0	\$70,091	3.5	1.2
Men	65-Up	269	5.8	0.0	\$56,071	3.3	1.2
Men	Total	4,612	100.0	34.3	\$53,325	3.4	1.4
N/A	N/A	647	100.0	0.0	\$16,590	2.1	1.1
N/A	Total	647	100.0	4.8	\$16,590	2.1	1.1
Total	00-19	573	4.3	0.0	\$6,119	2.8	1.8
Total	20-24	1,481	11.0	0.0	\$16,995	3.2	1.8
Total	25-34	2,911	21.6	0.0	\$31,285	3.5	1.5
Total	35-44	2,450	18.2	0.0	\$41,494	3.6	1.4
Total	45-54	2,960	22.0	0.0	\$46,186	3.6	1.3
Total	55-64	1,863	13.9	0.0	\$46,517	3.6	1.2
Total	65-Up	562	4.2	0.0	\$35,385	3.4	1.2
Total	N/A	648	4.8	0.0	\$16,584	2.1	1.1
Total	Total	13,448	100.0	100.0	\$35,352	3.4	1.4

Note: Persons worked any time during the year.

Industry Determination: Based on the industry of employment in which the person made the most money in the year.

N/A: Represents persons with demographic data that are unavailable.

N/A = Nonresidents, individuals for whom demographic data are not available.

Source: Demographics of Persons Working in Wyoming by County, Industry, Age, & Gender, 2000-2017.

Research & Planning, Wyoming Department of Workforce Services.

Prepared by M. Moore, Research & Planning, WY DWS, 6/12/18.

Average Earnings by Age and Gender in the 52 & 53 - Financial Activities Industry in 2008

Gender	Age Group	Number	Age Percent	Gender Percent	Average Annual Wage	Average Quarters Worked	Average Annual Employers
Women	00-19	294	3.6	0.0	\$6,121	3.0	1.8
Women	20-24	1,001	12.2	0.0	\$16,407	3.4	1.8
Women	25-34	1,887	23.0	0.0	\$25,711	3.5	1.5
Women	35-44	1,558	19.0	0.0	\$33,446	3.7	1.4
Women	45-54	1,952	23.8	0.0	\$36,299	3.7	1.3
Women	55-64	1,186	14.4	0.0	\$36,914	3.7	1.2
Women	65-Up	331	4.0	0.0	\$19,906	3.5	1.2
Women	N/A	2	0.0	0.0	\$12,016	3.0	1.0
Women	Total	8,211	100.0	60.9	\$29,241	3.6	1.4
Men	00-19	219	4.8	0.0	\$5,817	2.7	1.6
Men	20-24	446	9.7	0.0	\$23,218	3.2	1.8
Men	25-34	1,121	24.4	0.0	\$44,385	3.5	1.5
Men	35-44	858	18.6	0.0	\$68,060	3.6	1.4
Men	45-54	934	20.3	0.0	\$80,983	3.6	1.3
Men	55-64	748	16.3	0.0	\$75,006	3.6	1.2
Men	65-Up	276	6.0	0.0	\$65,622	3.3	1.2
Men	Total	4,602	100.0	34.1	\$58,591	3.5	1.4
N/A	N/A	663	100.0	0.0	\$18,717	2.3	1.2
N/A	Total	663	100.0	4.9	\$18,717	2.3	1.2
Total	00-19	513	3.8	0.0	\$5,991	2.9	1.7
Total	20-24	1,447	10.7	0.0	\$18,506	3.3	1.8
Total	25-34	3,008	22.3	0.0	\$32,671	3.5	1.5
Total	35-44	2,416	17.9	0.0	\$45,738	3.6	1.4
Total	45-54	2,886	21.4	0.0	\$50,760	3.7	1.3
Total	55-64	1,934	14.4	0.0	\$51,647	3.7	1.2
Total	65-Up	607	4.5	0.0	\$40,693	3.4	1.2
Total	N/A	665	4.9	0.0	\$18,697	2.3	1.2
Total	Total	13,476	100.0	100.0	\$38,746	3.5	1.4

Note: Persons worked any time during the year.

Industry Determination: Based on the industry of employment in which the person made the most money in the year.

N/A: Represents persons with demographic data that are unavailable.

N/A = Nonresidents, individuals for whom demographic data are not available.

Source: Demographics of Persons Working in Wyoming by County, Industry, Age, & Gender, 2000-2017.

Research & Planning, Wyoming Department of Workforce Services.

Prepared by M. Moore, Research & Planning, WY DWS, 6/12/18.

Average Earnings by Age and Gender in the 52 & 53 - Financial Activities Industry in 2009

Gender	Age Group	Number	Age Percent	Gender Percent	Average Annual Wage	Average Quarters Worked	Average Annual Employers
Women	00-19	232	2.9	0.0	\$5,688	3.0	1.6
Women	20-24	843	10.7	0.0	\$16,441	3.3	1.6
Women	25-34	1,843	23.4	0.0	\$25,598	3.6	1.4
Women	35-44	1,490	18.9	0.0	\$33,378	3.7	1.3
Women	45-54	1,865	23.6	0.0	\$35,849	3.7	1.2
Women	55-64	1,265	16.0	0.0	\$33,833	3.7	1.2
Women	65-Up	345	4.4	0.0	\$18,762	3.4	1.1
Women	N/A	4	0.1	0.0	\$7,863	1.8	1.0
Women	Total	7,887	100.0	61.6	\$28,940	3.6	1.3
Men	00-19	174	4.0	0.0	\$4,958	2.5	1.4
Men	20-24	382	8.8	0.0	\$19,730	3.1	1.5
Men	25-34	1,059	24.3	0.0	\$40,430	3.5	1.4
Men	35-44	850	19.5	0.0	\$59,861	3.5	1.3
Men	45-54	868	19.9	0.0	\$66,234	3.6	1.2
Men	55-64	746	17.1	0.0	\$70,441	3.5	1.2
Men	65-Up	285	6.5	0.0	\$50,195	3.3	1.2
Men	Total	4,364	100.0	34.1	\$51,889	3.4	1.3
N/A	N/A	549	100.0	0.0	\$20,017	2.3	1.1
N/A	Total	549	100.0	4.3	\$20,017	2.3	1.1
Total	00-19	406	3.2	0.0	\$5,375	2.8	1.5
Total	20-24	1,225	9.6	0.0	\$17,467	3.3	1.6
Total	25-34	2,902	22.7	0.0	\$31,011	3.5	1.4
Total	35-44	2,340	18.3	0.0	\$42,998	3.6	1.3
Total	45-54	2,733	21.4	0.0	\$45,500	3.7	1.2
Total	55-64	2,011	15.7	0.0	\$47,413	3.7	1.2
Total	65-Up	630	4.9	0.0	\$32,982	3.4	1.1
Total	N/A	553	4.3	0.0	\$19,929	2.3	1.1
Total	Total	12,800	100.0	100.0	\$36,382	3.5	1.3

Note: Persons worked any time during the year.

Industry Determination: Based on the industry of employment in which the person made the most money in the year.

N/A: Represents persons with demographic data that are unavailable.

N/A = Nonresidents, individuals for whom demographic data are not available.

Source: Demographics of Persons Working in Wyoming by County, Industry, Age, & Gender, 2000-2017.

Research & Planning, Wyoming Department of Workforce Services.

Prepared by M. Moore, Research & Planning, WY DWS, 6/12/18.

Average Earnings by Age and Gender in the 52 & 53 - Financial Activities Industry in 2010

Gender	Age Group	Number	Age Percent	Gender Percent	Average Annual Wage	Average Quarters Worked	Average Annual Employers
Women	00-19	165	2.2	0.0	\$5,420	2.9	1.6
Women	20-24	729	9.8	0.0	\$16,186	3.4	1.6
Women	25-34	1,739	23.3	0.0	\$25,849	3.6	1.4
Women	35-44	1,457	19.5	0.0	\$33,742	3.7	1.3
Women	45-54	1,764	23.7	0.0	\$36,008	3.7	1.2
Women	55-64	1,287	17.3	0.0	\$35,705	3.7	1.2
Women	65-Up	317	4.3	0.0	\$18,712	3.4	1.1
Women	Total	7,458	100.0	60.2	\$29,795	3.6	1.3
Men	00-19	146	3.3	0.0	\$4,929	2.4	1.4
Men	20-24	382	8.6	0.0	\$18,263	3.0	1.6
Men	25-34	1,083	24.5	0.0	\$40,707	3.5	1.4
Men	35-44	868	19.6	0.0	\$59,960	3.5	1.3
Men	45-54	863	19.5	0.0	\$71,352	3.6	1.2
Men	55-64	792	17.9	0.0	\$71,268	3.6	1.2
Men	65-Up	291	6.6	0.0	\$53,435	3.4	1.2
Men	Total	4,425	100.0	35.7	\$53,649	3.4	1.3
N/A	N/A	513	100.0	0.0	\$19,333	2.3	1.1
N/A	Total	513	100.0	4.1	\$19,333	2.3	1.1
Total	00-19	311	2.5	0.0	\$5,190	2.7	1.5
Total	20-24	1,111	9.0	0.0	\$16,901	3.3	1.6
Total	25-34	2,822	22.8	0.0	\$31,551	3.5	1.4
Total	35-44	2,325	18.8	0.0	\$43,530	3.6	1.3
Total	45-54	2,627	21.2	0.0	\$47,619	3.7	1.2
Total	55-64	2,079	16.8	0.0	\$49,253	3.7	1.2
Total	65-Up	608	4.9	0.0	\$35,331	3.4	1.1
Total	N/A	513	4.1	0.0	\$19,333	2.3	1.1
Total	Total	12,396	100.0	100.0	\$37,877	3.5	1.3

Note: Persons worked any time during the year.

Industry Determination: Based on the industry of employment in which the person made the most money in the year.

N/A: Represents persons with demographic data that are unavailable.

N/A = Nonresidents, individuals for whom demographic data are not available.

Source: Demographics of Persons Working in Wyoming by County, Industry, Age, & Gender, 2000-2017.
Research & Planning, Wyoming Department of Workforce Services.

Prepared by M. Moore, Research & Planning, WY DWS, 6/12/18.

Average Earnings by Age and Gender in the 52 & 53 - Financial Activities Industry in 2011

Gender	Age Group	Number	Age Percent	Gender Percent	Average Annual Wage	Average Quarters Worked	Average Annual Employers
Women	00-19	159	2.2	0.0	\$5,387	2.7	1.4
Women	20-24	695	9.4	0.0	\$15,281	3.3	1.6
Women	25-34	1,773	24.1	0.0	\$26,155	3.5	1.4
Women	35-44	1,413	19.2	0.0	\$34,343	3.6	1.3
Women	45-54	1,668	22.6	0.0	\$37,210	3.7	1.3
Women	55-64	1,326	18.0	0.0	\$36,868	3.7	1.2
Women	65-Up	337	4.6	0.0	\$20,557	3.4	1.1
Women	Total	7,371	100.0	59.6	\$30,425	3.6	1.3
Men	00-19	153	3.4	0.0	\$6,040	2.6	1.6
Men	20-24	374	8.3	0.0	\$19,158	3.0	1.6
Men	25-34	1,114	24.7	0.0	\$40,676	3.4	1.4
Men	35-44	874	19.3	0.0	\$63,359	3.5	1.3
Men	45-54	863	19.1	0.0	\$69,518	3.5	1.2
Men	55-64	800	17.7	0.0	\$74,515	3.5	1.1
Men	65-Up	340	7.5	0.0	\$51,262	3.3	1.2
Men	Total	4,518	100.0	36.5	\$54,407	3.4	1.3
N/A	N/A	488	100.0	0.0	\$22,003	2.3	1.1
N/A	Total	488	100.0	3.9	\$22,003	2.3	1.1
Total	00-19	312	2.5	0.0	\$5,707	2.7	1.5
Total	20-24	1,069	8.6	0.0	\$16,638	3.2	1.6
Total	25-34	2,887	23.3	0.0	\$31,758	3.5	1.4
Total	35-44	2,287	18.5	0.0	\$45,432	3.6	1.3
Total	45-54	2,531	20.4	0.0	\$48,226	3.7	1.2
Total	55-64	2,126	17.2	0.0	\$51,034	3.7	1.2
Total	65-Up	677	5.5	0.0	\$35,978	3.4	1.1
Total	N/A	488	3.9	0.0	\$22,003	2.3	1.1
Total	Total	12,377	100.0	100.0	\$38,847	3.5	1.3

Note: Persons worked any time during the year.

Industry Determination: Based on the industry of employment in which the person made the most money in the year.

N/A: Represents persons with demographic data that are unavailable.

N/A = Nonresidents, individuals for whom demographic data are not available.

Source: Demographics of Persons Working in Wyoming by County, Industry, Age, & Gender, 2000-2017.
Research & Planning, Wyoming Department of Workforce Services.

Prepared by M. Moore, Research & Planning, WY DWS, 6/12/18.

Average Earnings by Age and Gender in the 52 & 53 - Financial Activities Industry in 2012

Gender	Age Group	Number	Age Percent	Gender Percent	Average Annual Wage	Average Quarters Worked	Average Annual Employers
Women	00-19	166	2.3	0.0	\$6,502	2.9	1.6
Women	20-24	662	9.0	0.0	\$16,909	3.4	1.7
Women	25-34	1,752	23.9	0.0	\$27,385	3.6	1.4
Women	35-44	1,423	19.4	0.0	\$36,914	3.7	1.3
Women	45-54	1,600	21.8	0.0	\$38,989	3.7	1.2
Women	55-64	1,374	18.7	0.0	\$38,706	3.7	1.2
Women	65-Up	358	4.9	0.0	\$22,133	3.5	1.1
Women	Total	7,335	100.0	59.6	\$32,211	3.6	1.3
Men	00-19	155	3.5	0.0	\$4,911	2.4	1.4
Men	20-24	383	8.6	0.0	\$20,441	3.2	1.7
Men	25-34	1,069	24.0	0.0	\$43,375	3.5	1.4
Men	35-44	850	19.1	0.0	\$69,830	3.6	1.3
Men	45-54	834	18.7	0.0	\$72,159	3.6	1.2
Men	55-64	784	17.6	0.0	\$83,206	3.6	1.1
Men	65-Up	374	8.4	0.0	\$59,079	3.3	1.2
Men	Total	4,449	100.0	36.2	\$58,850	3.5	1.3
N/A	N/A	515	100.0	0.0	\$20,603	2.3	1.2
N/A	Total	515	100.0	4.2	\$20,603	2.3	1.2
Total	00-19	321	2.6	0.0	\$5,734	2.7	1.5
Total	20-24	1,045	8.5	0.0	\$18,203	3.3	1.7
Total	25-34	2,821	22.9	0.0	\$33,444	3.5	1.4
Total	35-44	2,273	18.5	0.0	\$49,223	3.6	1.3
Total	45-54	2,434	19.8	0.0	\$50,354	3.7	1.2
Total	55-64	2,158	17.5	0.0	\$54,873	3.7	1.1
Total	65-Up	732	6.0	0.0	\$41,010	3.4	1.2
Total	N/A	515	4.2	0.0	\$20,603	2.3	1.2
Total	Total	12,299	100.0	100.0	\$41,361	3.5	1.3

Note: Persons worked any time during the year.

Industry Determination: Based on the industry of employment in which the person made the most money in the year.

N/A: Represents persons with demographic data that are unavailable.

N/A = Nonresidents, individuals for whom demographic data are not available.

Source: Demographics of Persons Working in Wyoming by County, Industry, Age, & Gender, 2000-2017.
Research & Planning, Wyoming Department of Workforce Services.

Prepared by M. Moore, Research & Planning, WY DWS, 6/12/18.

Average Earnings by Age and Gender in the 52 & 53 - Financial Activities Industry in 2013

Gender	Age Group	Number	Age Percent	Gender Percent	Average Annual Wage	Average Quarters Worked	Average Annual Employers
Women	00-19	169	2.2	0.0	\$6,778	3.0	1.7
Women	20-24	728	9.6	0.0	\$16,892	3.4	1.7
Women	25-34	1,809	23.9	0.0	\$27,950	3.6	1.4
Women	35-44	1,432	18.9	0.0	\$37,344	3.7	1.4
Women	45-54	1,584	20.9	0.0	\$40,708	3.7	1.3
Women	55-64	1,459	19.3	0.0	\$39,821	3.7	1.2
Women	65-Up	394	5.2	0.0	\$25,953	3.5	1.1
Women	Total	7,575	100.0	58.6	\$33,041	3.6	1.4
Men	00-19	138	2.9	0.0	\$8,011	2.5	1.6
Men	20-24	410	8.6	0.0	\$25,139	3.2	1.6
Men	25-34	1,194	25.0	0.0	\$45,717	3.5	1.4
Men	35-44	976	20.4	0.0	\$67,737	3.6	1.3
Men	45-54	844	17.7	0.0	\$76,251	3.6	1.3
Men	55-64	828	17.3	0.0	\$82,974	3.6	1.1
Men	65-Up	386	8.1	0.0	\$60,863	3.3	1.2
Men	Total	4,776	100.0	36.9	\$60,440	3.5	1.3
N/A	N/A	575	100.0	0.0	\$21,733	2.3	1.1
N/A	Total	575	100.0	4.4	\$21,733	2.3	1.1
Total	00-19	307	2.4	0.0	\$7,332	2.8	1.6
Total	20-24	1,138	8.8	0.0	\$19,863	3.3	1.7
Total	25-34	3,003	23.2	0.0	\$35,015	3.5	1.4
Total	35-44	2,408	18.6	0.0	\$49,663	3.6	1.3
Total	45-54	2,428	18.8	0.0	\$53,063	3.7	1.3
Total	55-64	2,287	17.7	0.0	\$55,444	3.7	1.2
Total	65-Up	780	6.0	0.0	\$43,229	3.4	1.2
Total	N/A	575	4.4	0.0	\$21,733	2.3	1.1
Total	Total	12,926	100.0	100.0	\$42,662	3.5	1.3

Note: Persons worked any time during the year.

Industry Determination: Based on the industry of employment in which the person made the most money in the year.

N/A: Represents persons with demographic data that are unavailable.

N/A = Nonresidents, individuals for whom demographic data are not available.

Source: Demographics of Persons Working in Wyoming by County, Industry, Age, & Gender, 2000-2017.
Research & Planning, Wyoming Department of Workforce Services.

Prepared by M. Moore, Research & Planning, WY DWS, 6/12/18.

Average Earnings by Age and Gender in the 52 & 53 - Financial Activities Industry in 2014

Gender	Age Group	Number	Age Percent	Gender Percent	Average Annual Wage	Average Quarters Worked	Average Annual Employers
Women	00-19	138	1.8	0.0	\$6,156	2.9	1.7
Women	20-24	727	9.7	0.0	\$17,743	3.3	1.7
Women	25-34	1,776	23.6	0.0	\$28,840	3.6	1.4
Women	35-44	1,453	19.3	0.0	\$37,988	3.6	1.3
Women	45-54	1,508	20.1	0.0	\$41,236	3.7	1.3
Women	55-64	1,470	19.6	0.0	\$41,399	3.7	1.2
Women	65-Up	440	5.9	0.0	\$27,801	3.5	1.1
Women	Total	7,512	100.0	57.7	\$34,004	3.6	1.3
Men	00-19	145	3.0	0.0	\$8,499	2.7	1.5
Men	20-24	423	8.6	0.0	\$24,046	3.2	1.6
Men	25-34	1,214	24.7	0.0	\$47,794	3.5	1.4
Men	35-44	1,057	21.5	0.0	\$70,728	3.6	1.3
Men	45-54	841	17.1	0.0	\$77,107	3.5	1.3
Men	55-64	826	16.8	0.0	\$85,669	3.6	1.1
Men	65-Up	400	8.2	0.0	\$61,863	3.4	1.1
Men	Total	4,906	100.0	37.7	\$62,075	3.5	1.3
N/A	N/A	601	100.0	0.0	\$24,684	2.3	1.1
N/A	Total	601	100.0	4.6	\$24,684	2.3	1.1
Total	00-19	283	2.2	0.0	\$7,356	2.8	1.6
Total	20-24	1,150	8.8	0.0	\$20,061	3.3	1.7
Total	25-34	2,990	23.0	0.0	\$36,536	3.6	1.4
Total	35-44	2,510	19.3	0.0	\$51,776	3.6	1.3
Total	45-54	2,349	18.0	0.0	\$54,079	3.6	1.3
Total	55-64	2,296	17.6	0.0	\$57,325	3.7	1.2
Total	65-Up	840	6.5	0.0	\$44,021	3.5	1.1
Total	N/A	601	4.6	0.0	\$24,684	2.3	1.1
Total	Total	13,019	100.0	100.0	\$44,152	3.5	1.3

Note: Persons worked any time during the year.

Industry Determination: Based on the industry of employment in which the person made the most money in the year.

N/A: Represents persons with demographic data that are unavailable.

N/A = Nonresidents, individuals for whom demographic data are not available.

Source: Demographics of Persons Working in Wyoming by County, Industry, Age, & Gender, 2000-2017.
Research & Planning, Wyoming Department of Workforce Services.

Prepared by M. Moore, Research & Planning, WY DWS, 6/12/18.

Average Earnings by Age and Gender in the 52 & 53 - Financial Activities Industry in 2015

Gender	Age Group	Number	Age Percent	Gender Percent	Average Annual Wage	Average Quarters Worked	Average Annual Employers
Women	00-19	159	2.1	0.0	\$6,665	2.7	1.6
Women	20-24	686	9.1	0.0	\$18,856	3.4	1.8
Women	25-34	1,787	23.7	0.0	\$29,914	3.6	1.4
Women	35-44	1,486	19.7	0.0	\$40,091	3.7	1.3
Women	45-54	1,491	19.7	0.0	\$43,071	3.7	1.3
Women	55-64	1,476	19.5	0.0	\$42,604	3.7	1.2
Women	65-Up	465	6.2	0.0	\$28,496	3.5	1.1
Women	N/A	1	0.0	0.0	\$12,200	1.0	1.0
Women	Total	7,551	100.0	58.0	\$35,411	3.6	1.3
Men	00-19	127	2.6	0.0	\$6,205	2.6	1.5
Men	20-24	382	8.0	0.0	\$22,832	3.3	1.8
Men	25-34	1,179	24.5	0.0	\$47,646	3.5	1.5
Men	35-44	1,021	21.2	0.0	\$73,057	3.5	1.3
Men	45-54	857	17.8	0.0	\$75,442	3.5	1.3
Men	55-64	840	17.5	0.0	\$86,251	3.5	1.1
Men	65-Up	399	8.3	0.0	\$59,891	3.3	1.1
Men	Total	4,805	100.0	36.9	\$62,701	3.4	1.3
N/A	N/A	667	100.0	0.0	\$20,783	2.3	1.2
N/A	Total	667	100.0	5.1	\$20,783	2.3	1.2
Total	00-19	286	2.2	0.0	\$6,461	2.7	1.5
Total	20-24	1,068	8.2	0.0	\$20,278	3.4	1.8
Total	25-34	2,966	22.8	0.0	\$36,962	3.5	1.4
Total	35-44	2,507	19.3	0.0	\$53,517	3.6	1.3
Total	45-54	2,348	18.0	0.0	\$54,886	3.6	1.3
Total	55-64	2,316	17.8	0.0	\$58,435	3.6	1.2
Total	65-Up	864	6.6	0.0	\$42,994	3.4	1.1
Total	N/A	668	5.1	0.0	\$20,770	2.3	1.2
Total	Total	13,023	100.0	100.0	\$44,731	3.5	1.3

Note: Persons worked any time during the year.

Industry Determination: Based on the industry of employment in which the person made the most money in the year.

N/A: Represents persons with demographic data that are unavailable.

N/A = Nonresidents, individuals for whom demographic data are not available.

Source: Demographics of Persons Working in Wyoming by County, Industry, Age, & Gender, 2000-2017.

Research & Planning, Wyoming Department of Workforce Services.

Prepared by M. Moore, Research & Planning, WY DWS, 6/12/18.

Average Earnings by Age and Gender in the 52 & 53 - Financial Activities Industry in 2016

Gender	Age Group	Number	Age Percent	Gender Percent	Average Annual Wage	Average Quarters Worked	Average Annual Employers
Women	00-19	134	1.8	0.0	\$6,877	2.8	1.6
Women	20-24	637	8.6	0.0	\$19,990	3.4	1.6
Women	25-34	1,761	23.9	0.0	\$30,225	3.6	1.4
Women	35-44	1,449	19.6	0.0	\$41,981	3.7	1.3
Women	45-54	1,460	19.8	0.0	\$44,422	3.7	1.2
Women	55-64	1,474	20.0	0.0	\$42,293	3.7	1.1
Women	65-Up	464	6.3	0.0	\$30,824	3.5	1.1
Women	N/A	1	0.0	0.0	\$7,678	1.0	1.0
Women	Total	7,380	100.0	59.5	\$36,480	3.6	1.3
Men	00-19	115	2.6	0.0	\$5,449	2.5	1.4
Men	20-24	356	8.0	0.0	\$20,425	3.2	1.6
Men	25-34	1,007	22.7	0.0	\$41,497	3.4	1.4
Men	35-44	945	21.3	0.0	\$72,022	3.6	1.2
Men	45-54	816	18.4	0.0	\$75,110	3.5	1.2
Men	55-64	780	17.6	0.0	\$83,273	3.5	1.2
Men	65-Up	412	9.3	0.0	\$63,959	3.2	1.1
Men	Total	4,431	100.0	35.7	\$61,011	3.4	1.3
N/A	N/A	601	100.0	0.0	\$23,202	2.5	1.2
N/A	Total	601	100.0	4.8	\$23,202	2.5	1.2
Total	00-19	249	2.0	0.0	\$6,217	2.7	1.5
Total	20-24	993	8.0	0.0	\$20,146	3.3	1.6
Total	25-34	2,768	22.3	0.0	\$34,326	3.6	1.4
Total	35-44	2,394	19.3	0.0	\$53,839	3.7	1.3
Total	45-54	2,276	18.3	0.0	\$55,425	3.7	1.2
Total	55-64	2,254	18.2	0.0	\$56,474	3.7	1.1
Total	65-Up	876	7.1	0.0	\$46,408	3.4	1.1
Total	N/A	602	4.9	0.0	\$23,177	2.5	1.2
Total	Total	12,412	100.0	100.0	\$44,594	3.5	1.3

Note: Persons worked any time during the year.

Industry Determination: Based on the industry of employment in which the person made the most money in the year.

N/A: Represents persons with demographic data that are unavailable.

N/A = Nonresidents, individuals for whom demographic data are not available.

Source: Demographics of Persons Working in Wyoming by County, Industry, Age, & Gender, 2000-2017.
Research & Planning, Wyoming Department of Workforce Services.

Prepared by M. Moore, Research & Planning, WY DWS, 6/12/18.

Average Earnings by Age and Gender in the 52 & 53 - Financial Activities Industry in 2017

Gender	Age Group	Number	Age Percent	Gender Percent	Average Annual Wage	Average Quarters Worked	Average Annual Employers
Women	00-19	115	1.6	0.0	\$7,785	2.9	1.6
Women	20-24	588	8.0	0.0	\$19,859	3.4	1.6
Women	25-34	1,756	23.8	0.0	\$31,039	3.6	1.4
Women	35-44	1,502	20.3	0.0	\$42,322	3.7	1.3
Women	45-54	1,424	19.3	0.0	\$45,495	3.7	1.2
Women	55-64	1,511	20.4	0.0	\$43,210	3.7	1.2
Women	65-Up	494	6.7	0.0	\$30,357	3.5	1.1
Women	Total	7,390	100.0	57.9	\$37,309	3.6	1.3
Men	00-19	109	2.4	0.0	\$6,600	2.6	1.5
Men	20-24	330	7.2	0.0	\$23,247	3.1	1.6
Men	25-34	1,103	24.1	0.0	\$44,009	3.4	1.4
Men	35-44	1,051	23.0	0.0	\$72,122	3.4	1.3
Men	45-54	776	17.0	0.0	\$79,040	3.5	1.2
Men	55-64	793	17.3	0.0	\$90,765	3.6	1.1
Men	65-Up	413	9.0	0.0	\$66,681	3.3	1.1
Men	N/A	1	0.0	0.0	\$2,400	4.0	1.0
Men	Total	4,576	100.0	35.8	\$64,158	3.4	1.3
N/A	N/A	807	100.0	0.0	\$19,742	2.3	1.2
N/A	Total	807	100.0	6.3	\$19,742	2.3	1.2
Total	00-19	224	1.8	0.0	\$7,208	2.7	1.5
Total	20-24	918	7.2	0.0	\$21,077	3.3	1.6
Total	25-34	2,859	22.4	0.0	\$36,043	3.5	1.4
Total	35-44	2,553	20.0	0.0	\$54,590	3.6	1.3
Total	45-54	2,200	17.2	0.0	\$57,327	3.6	1.2
Total	55-64	2,304	18.0	0.0	\$59,578	3.7	1.2
Total	65-Up	907	7.1	0.0	\$46,897	3.4	1.1
Total	N/A	808	6.3	0.0	\$19,721	2.3	1.2
Total	Total	12,773	100.0	100.0	\$45,818	3.5	1.3

Note: Persons worked any time during the year.

Industry Determination: Based on the industry of employment in which the person made the most money in the year.

N/A: Represents persons with demographic data that are unavailable.

N/A = Nonresidents, individuals for whom demographic data are not available.

Source: Demographics of Persons Working in Wyoming by County, Industry, Age, & Gender, 2000-2017.

Research & Planning, Wyoming Department of Workforce Services.

Prepared by M. Moore, Research & Planning, WY DWS, 6/12/18.