

# Wyoming Retail Trade (NAICS 44-45) at a Glance, 2017

Demographics of Persons Working in Wyoming by County, Industry, Age, & Gender, 2000-2017

**Table: Total Number of Persons Working in Retail Trade (NAICS 44-45) at Any Time by Gender and Age, 2016-2017**

Gender	2016	2017	Change	
			N	%
Women	19,727	18,653	-1,074	-5.4
Men	18,289	17,397	-892	-4.9
Nonresidents	3,387	3,831	444	13.1
<b>Total</b>	<b>41,403</b>	<b>39,881</b>	<b>-1,522</b>	<b>-3.7</b>

Age	2016	2017	Change	
			N	%
00-19	4,339	3,906	-433	-10.0
20-24	6,307	5,746	-561	-8.9
25-34	8,236	7,756	-480	-5.8
35-44	5,864	5,657	-207	-3.5
45-54	5,500	5,294	-206	-3.7
55-64	5,235	5,152	-83	-1.6
65-Up	2,530	2,536	6	0.2
Nonresidents	3,392	3,834	442	13.0
<b>Total</b>	<b>41,403</b>	<b>39,881</b>	<b>-1,522</b>	<b>-3.7</b>

## Women's Wages as % of Men's Wages

Retail Trade (NAICS 44-45): 66.6%

Total, All Industries: 62.7%

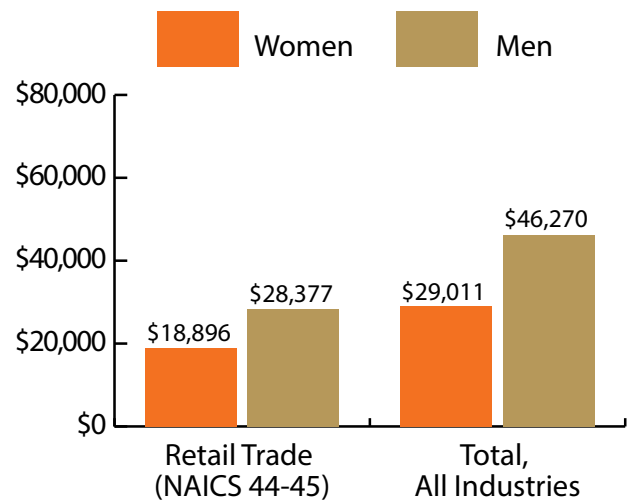


Figure: Average Annual Wages by Gender, 2017

Total = 39,881

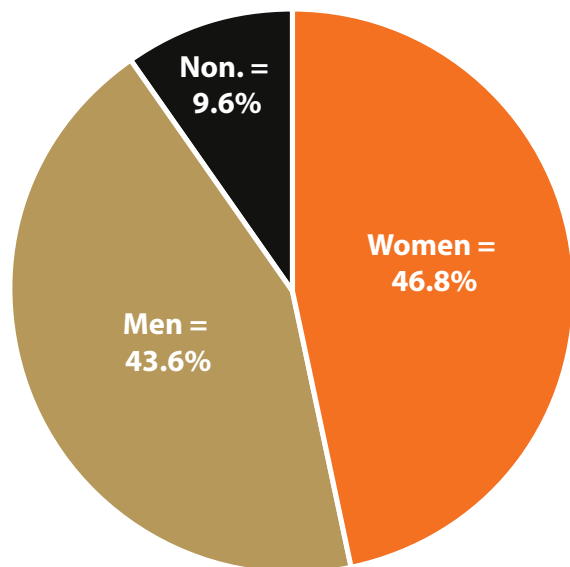


Figure: Persons Working by Gender, 2017

Total = 39,881

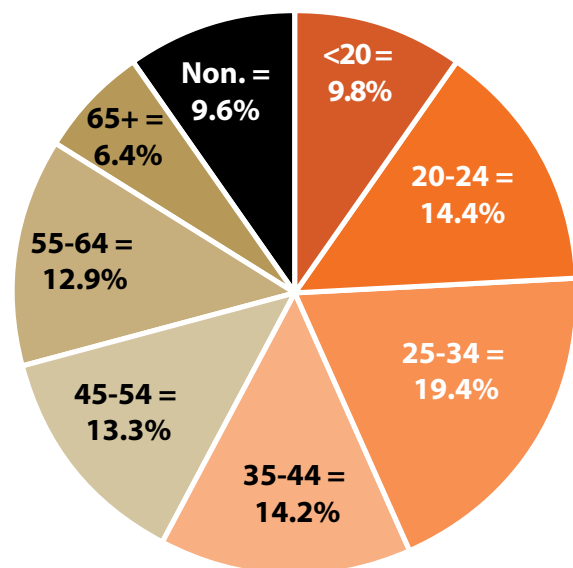


Figure: Persons Working by Age, 2017

Note: Nonresidents are individuals for whom demographic data are not available.

Source: Demographics of Persons Working in Wyoming by County, Industry, Age, & Gender, 2000-2017. Research & Planning, Wyoming Department of Workforce Services. Prepared by M. Moore, Research & Planning, WY DWS, 6/12/18.

## Persons Working in Retail Trade (NAICS 44-45) in Wyoming by Gender and Age, 2000-2017

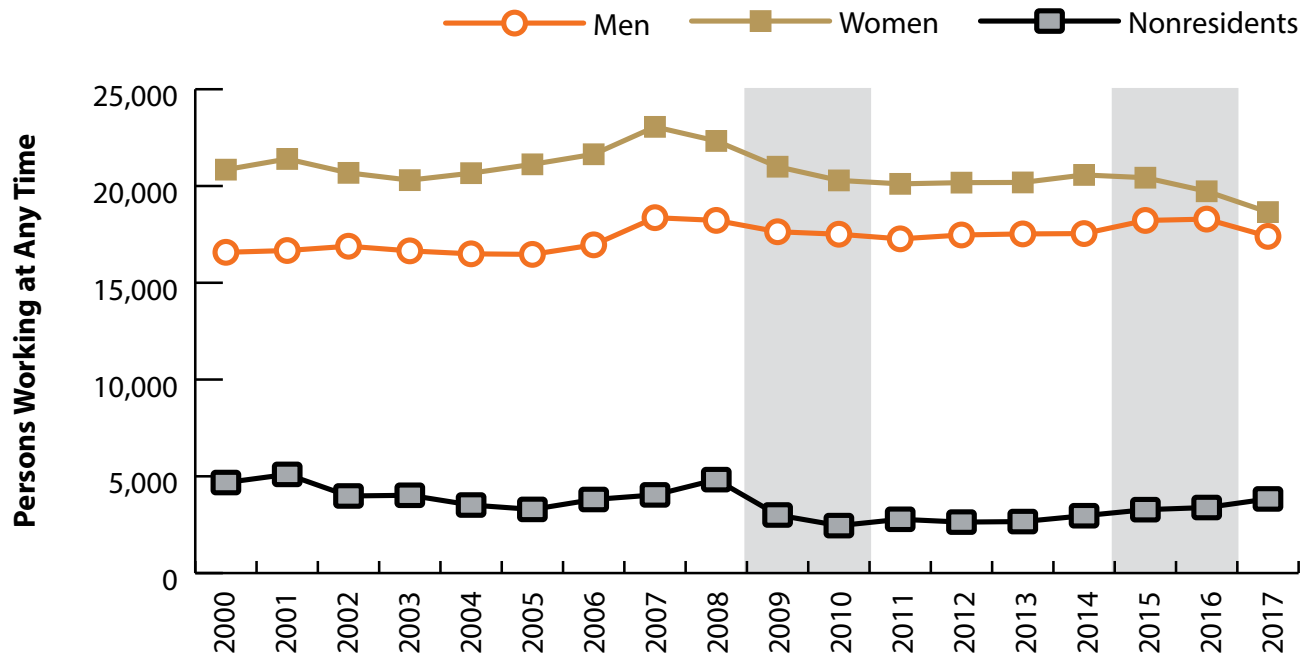


Figure: Persons Working in Retail Trade (NAICS 44-45) in Wyoming at Any Time by Gender, 2000-2017

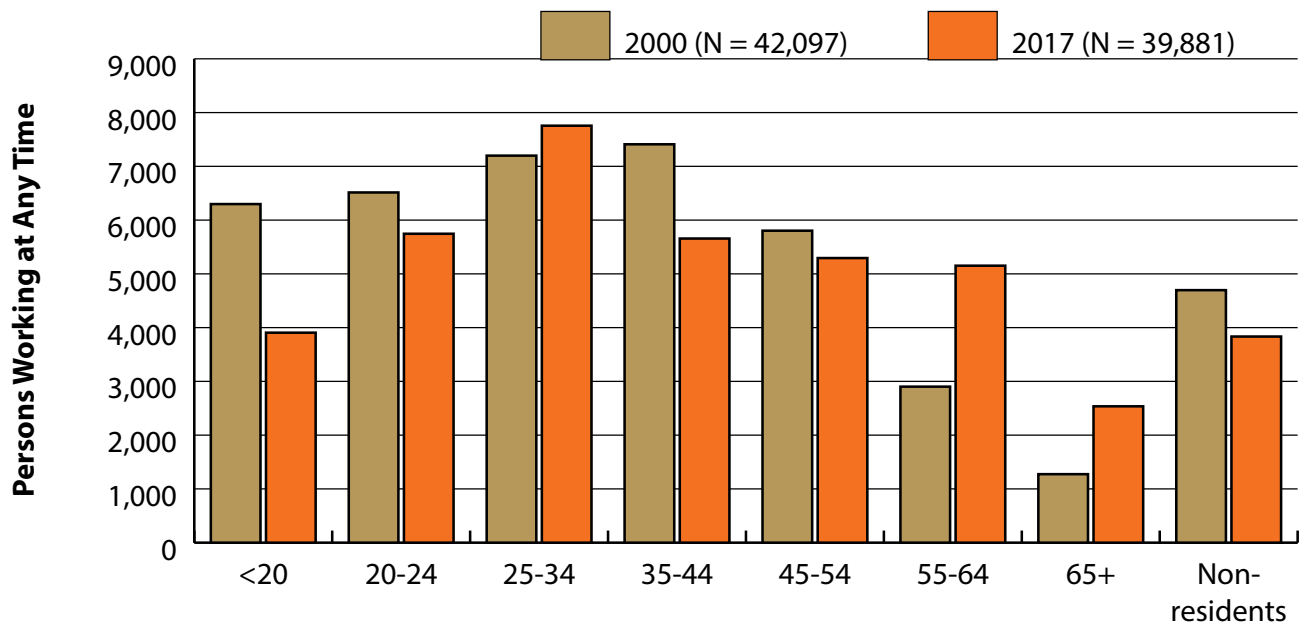


Figure: Persons Working in Retail Trade (NAICS 44-45) in Wyoming at Any Time by Age, 2000-2017

Note: Nonresidents are individuals for whom demographic data are not available.  
 Shaded areas indicate periods of economic downturn: 2009Q1-2010Q1 and 2015Q2-2016Q4.  
 Source: Demographics of Persons Working in Wyoming by County, Industry, Age, & Gender, 2000-2017. Research & Planning, Wyoming Department of Workforce Services. Prepared by M. Moore, Research & Planning, WY DWS, 6/12/18.

## Wages for Persons Working in Retail Trade (NAICS 44-45) in Wyoming by Gender, 2000-2017

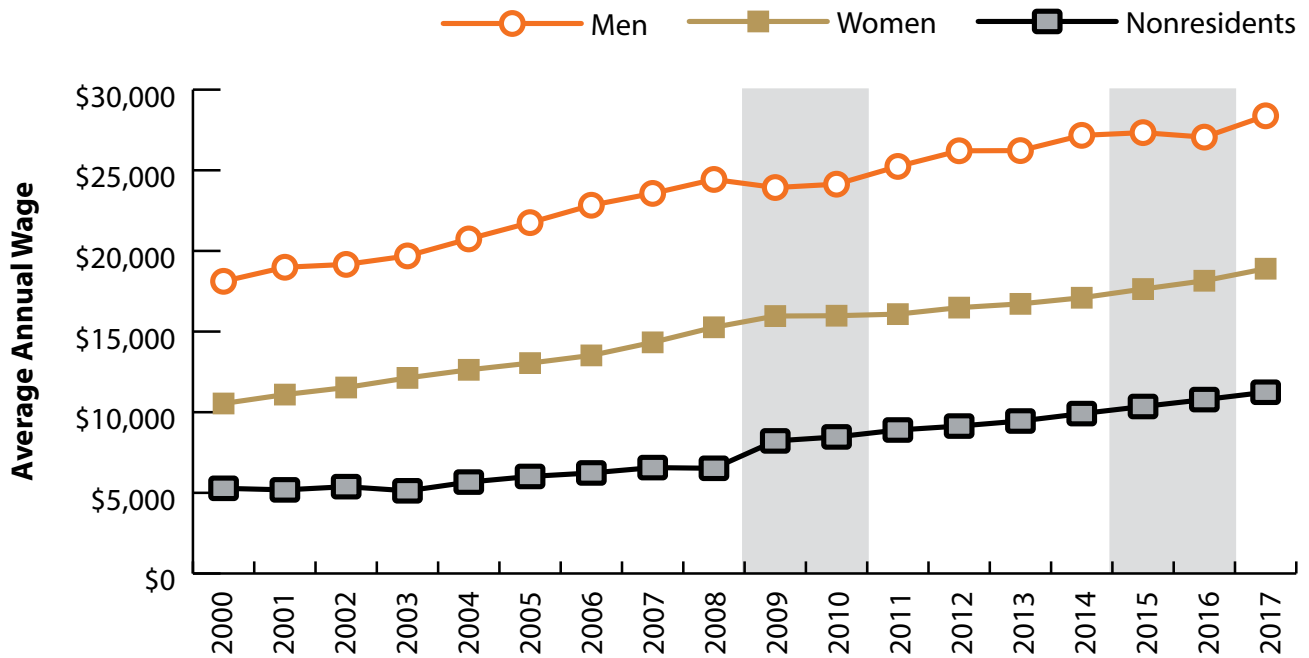


Figure: Average Annual Wage for Persons Working in Retail Trade (NAICS 44-45) in Wyoming at Any Time by Age, 2000-2017

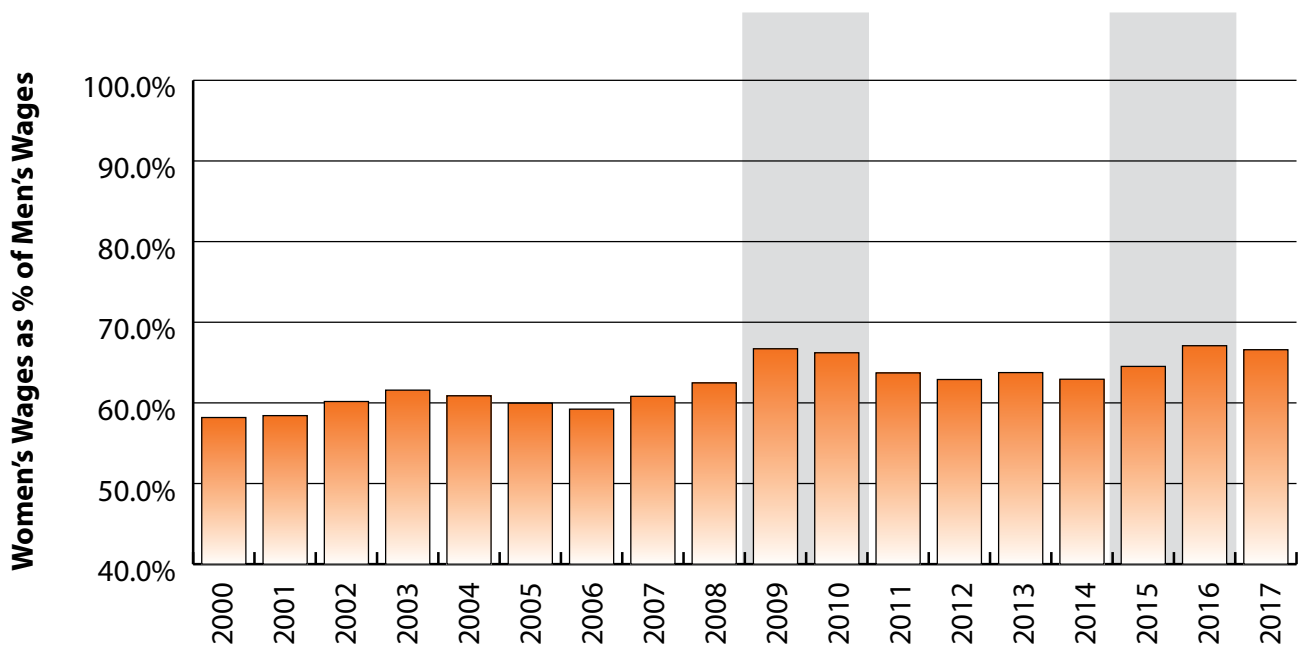


Figure: Women's Average Annual Wages as a Percent of Men's Wages for Persons Working in Retail Trade (NAICS 44-45) in Wyoming at Any Time by Age, 2000-2017

Note: Nonresidents are individuals for whom demographic data are not available.  
 Shaded areas indicate periods of economic downturn: 2009Q1-2010Q1 and 2015Q2-2016Q4.  
 Source: Demographics of Persons Working in Wyoming by County, Industry, Age, & Gender, 2000-2017. Research & Planning, Wyoming Department of Workforce Services. Prepared by M. Moore, Research & Planning, WY DWS, 6/12/18.

### Average Earnings by Age and Gender in the 44 & 45 - Retail Trade Industry in 2000

Gender	Age Group	Number	Age Percent	Gender Percent	Average Annual Wage	Average Quarters Worked	Average Annual Employers
Women	00-19	3,254	15.6	0.0	\$3,671	2.8	1.8
Women	20-24	3,681	17.7	0.0	\$7,140	3.1	1.9
Women	25-34	3,763	18.1	0.0	\$11,371	3.2	1.6
Women	35-44	4,361	20.9	0.0	\$14,149	3.4	1.5
Women	45-54	3,503	16.8	0.0	\$14,811	3.5	1.4
Women	55-64	1,639	7.9	0.0	\$12,268	3.4	1.3
Women	65-Up	636	3.1	0.0	\$7,711	3.1	1.1
Women	N/A	8	0.0	0.0	\$10,648	2.1	1.3
<b>Women</b>	<b>Total</b>	<b>20,845</b>	<b>100.0</b>	<b>49.5</b>	<b>\$10,540</b>	<b>3.2</b>	<b>1.6</b>
Men	00-19	3,044	18.4	0.0	\$3,885	2.8	1.7
Men	20-24	2,833	17.1	0.0	\$10,086	3.1	1.9
Men	25-34	3,436	20.7	0.0	\$19,252	3.3	1.6
Men	35-44	3,049	18.4	0.0	\$27,351	3.5	1.4
Men	45-54	2,300	13.9	0.0	\$31,050	3.5	1.3
Men	55-64	1,263	7.6	0.0	\$23,784	3.4	1.2
Men	65-Up	638	3.8	0.0	\$13,758	3.0	1.2
Men	N/A	11	0.1	0.0	\$5,101	2.2	1.1
<b>Men</b>	<b>Total</b>	<b>16,574</b>	<b>100.0</b>	<b>39.4</b>	<b>\$18,114</b>	<b>3.2</b>	<b>1.5</b>
N/A	N/A	4,678	100.0	0.0	\$5,281	1.7	1.2
<b>N/A</b>	<b>Total</b>	<b>4,678</b>	<b>100.0</b>	<b>11.1</b>	<b>\$5,281</b>	<b>1.7</b>	<b>1.2</b>
Total	00-19	6,298	15.0	0.0	\$3,774	2.8	1.7
Total	20-24	6,514	15.5	0.0	\$8,421	3.1	1.9
Total	25-34	7,199	17.1	0.0	\$15,133	3.2	1.6
Total	35-44	7,410	17.6	0.0	\$19,581	3.4	1.5
Total	45-54	5,803	13.8	0.0	\$21,247	3.5	1.4
Total	55-64	2,902	6.9	0.0	\$17,280	3.4	1.3
Total	65-Up	1,274	3.0	0.0	\$10,739	3.1	1.2
Total	N/A	4,697	11.2	0.0	\$5,289	1.7	1.2
<b>Total</b>	<b>Total</b>	<b>42,097</b>	<b>100.0</b>	<b>100.0</b>	<b>\$12,938</b>	<b>3.1</b>	<b>1.5</b>

Note: Persons worked any time during the year.

Industry Determination: Based on the industry of employment in which the person made the most money in the year.

N/A: Represents persons with demographic data that are unavailable.

N/A = Nonresidents, individuals for whom demographic data are not available.

Source: Demographics of Persons Working in Wyoming by County, Industry, Age, & Gender, 2000-2017.

Research & Planning, Wyoming Department of Workforce Services.

Prepared by M. Moore, Research & Planning, WY DWS, 6/12/18.

### Average Earnings by Age and Gender in the 44 & 45 - Retail Trade Industry in 2001

Gender	Age Group	Number	Age Percent	Gender Percent	Average Annual Wage	Average Quarters Worked	Average Annual Employers
Women	00-19	3,247	15.2	0.0	\$3,933	2.8	1.8
Women	20-24	3,784	17.7	0.0	\$7,510	3.0	1.9
Women	25-34	3,848	18.0	0.0	\$11,918	3.2	1.6
Women	35-44	4,273	20.0	0.0	\$14,518	3.4	1.5
Women	45-54	3,756	17.6	0.0	\$15,528	3.5	1.4
Women	55-64	1,777	8.3	0.0	\$12,900	3.4	1.3
Women	65-Up	704	3.3	0.0	\$9,872	3.1	1.1
Women	N/A	8	0.0	0.0	\$8,030	2.1	1.0
<b>Women</b>	<b>Total</b>	<b>21,397</b>	<b>100.0</b>	<b>49.6</b>	<b>\$11,092</b>	<b>3.2</b>	<b>1.6</b>
Men	00-19	3,001	18.0	0.0	\$4,025	2.7	1.7
Men	20-24	2,788	16.7	0.0	\$10,426	3.0	1.9
Men	25-34	3,371	20.2	0.0	\$20,214	3.3	1.6
Men	35-44	3,029	18.2	0.0	\$28,168	3.4	1.4
Men	45-54	2,430	14.6	0.0	\$31,778	3.5	1.3
Men	55-64	1,359	8.2	0.0	\$25,853	3.4	1.2
Men	65-Up	680	4.1	0.0	\$13,841	3.1	1.1
Men	N/A	8	0.0	0.0	\$7,082	2.6	1.4
<b>Men</b>	<b>Total</b>	<b>16,666</b>	<b>100.0</b>	<b>38.6</b>	<b>\$18,987</b>	<b>3.2</b>	<b>1.5</b>
N/A	N/A	5,099	100.0	0.0	\$5,184	1.6	1.1
<b>N/A</b>	<b>Total</b>	<b>5,099</b>	<b>100.0</b>	<b>11.8</b>	<b>\$5,184</b>	<b>1.6</b>	<b>1.1</b>
Total	00-19	6,248	14.5	0.0	\$3,977	2.8	1.7
Total	20-24	6,572	15.2	0.0	\$8,747	3.0	1.9
Total	25-34	7,219	16.7	0.0	\$15,792	3.2	1.6
Total	35-44	7,302	16.9	0.0	\$20,180	3.4	1.4
Total	45-54	6,186	14.3	0.0	\$21,912	3.5	1.4
Total	55-64	3,136	7.3	0.0	\$18,513	3.4	1.3
Total	65-Up	1,384	3.2	0.0	\$11,822	3.1	1.1
Total	N/A	5,115	11.9	0.0	\$5,191	1.6	1.1
<b>Total</b>	<b>Total</b>	<b>43,162</b>	<b>100.0</b>	<b>100.0</b>	<b>\$13,443</b>	<b>3.0</b>	<b>1.5</b>

Note: Persons worked any time during the year.

Industry Determination: Based on the industry of employment in which the person made the most money in the year.

N/A: Represents persons with demographic data that are unavailable.

N/A = Nonresidents, individuals for whom demographic data are not available.

Source: Demographics of Persons Working in Wyoming by County, Industry, Age, & Gender, 2000-2017.

Research & Planning, Wyoming Department of Workforce Services.

Prepared by M. Moore, Research & Planning, WY DWS, 6/12/18.

### Average Earnings by Age and Gender in the 44 & 45 - Retail Trade Industry in 2002

Gender	Age Group	Number	Age Percent	Gender Percent	Average Annual Wage	Average Quarters Worked	Average Annual Employers
Women	00-19	3,030	14.7	0.0	\$3,844	2.8	1.7
Women	20-24	3,505	16.9	0.0	\$7,783	3.0	1.8
Women	25-34	3,727	18.0	0.0	\$12,080	3.2	1.6
Women	35-44	4,074	19.7	0.0	\$15,245	3.4	1.5
Women	45-54	3,758	18.2	0.0	\$16,092	3.5	1.4
Women	55-64	1,881	9.1	0.0	\$13,696	3.4	1.2
Women	65-Up	698	3.4	0.0	\$8,752	3.2	1.1
Women	N/A	6	0.0	0.0	\$8,401	2.3	1.0
Women	Total	20,679	100.0	49.8	\$11,531	3.2	1.5
Men	00-19	2,852	16.9	0.0	\$4,288	2.7	1.6
Men	20-24	2,815	16.7	0.0	\$10,289	3.0	1.8
Men	25-34	3,527	20.9	0.0	\$20,048	3.3	1.6
Men	35-44	2,960	17.5	0.0	\$28,238	3.4	1.4
Men	45-54	2,506	14.8	0.0	\$31,349	3.5	1.3
Men	55-64	1,502	8.9	0.0	\$26,250	3.4	1.2
Men	65-Up	722	4.3	0.0	\$14,060	3.1	1.1
Men	N/A	4	0.0	0.0	\$4,129	2.3	1.0
Men	Total	16,888	100.0	40.6	\$19,164	3.2	1.5
N/A	N/A	3,984	100.0	0.0	\$5,383	1.7	1.1
N/A	Total	3,984	100.0	9.6	\$5,383	1.7	1.1
Total	00-19	5,882	14.2	0.0	\$4,060	2.8	1.7
Total	20-24	6,320	15.2	0.0	\$8,899	3.0	1.8
Total	25-34	7,254	17.5	0.0	\$15,954	3.2	1.6
Total	35-44	7,034	16.9	0.0	\$20,713	3.4	1.4
Total	45-54	6,264	15.1	0.0	\$22,196	3.5	1.3
Total	55-64	3,383	8.1	0.0	\$19,270	3.4	1.2
Total	65-Up	1,420	3.4	0.0	\$11,451	3.2	1.1
Total	N/A	3,994	9.6	0.0	\$5,386	1.7	1.1
Total	Total	41,551	100.0	100.0	\$14,044	3.1	1.5

Note: Persons worked any time during the year.

Industry Determination: Based on the industry of employment in which the person made the most money in the year.

N/A: Represents persons with demographic data that are unavailable.

N/A = Nonresidents, individuals for whom demographic data are not available.

Source: Demographics of Persons Working in Wyoming by County, Industry, Age, & Gender, 2000-2017.  
Research & Planning, Wyoming Department of Workforce Services.

Prepared by M. Moore, Research & Planning, WY DWS, 6/12/18.

### Average Earnings by Age and Gender in the 44 & 45 - Retail Trade Industry in 2003

Gender	Age Group	Number	Age Percent	Gender Percent	Average Annual Wage	Average Quarters Worked	Average Annual Employers
Women	00-19	2,936	14.5	0.0	\$4,232	2.8	1.7
Women	20-24	3,377	16.6	0.0	\$7,885	3.0	1.8
Women	25-34	3,648	18.0	0.0	\$12,521	3.1	1.6
Women	35-44	3,815	18.8	0.0	\$15,965	3.4	1.5
Women	45-54	3,800	18.7	0.0	\$16,926	3.5	1.3
Women	55-64	1,959	9.6	0.0	\$15,013	3.4	1.2
Women	65-Up	760	3.7	0.0	\$8,934	3.2	1.1
Women	N/A	8	0.0	0.0	\$4,042	1.4	1.0
Women	Total	20,303	100.0	49.6	\$12,126	3.2	1.5
Men	00-19	2,682	16.1	0.0	\$4,300	2.7	1.6
Men	20-24	2,977	17.9	0.0	\$10,619	3.0	1.8
Men	25-34	3,450	20.7	0.0	\$20,613	3.3	1.6
Men	35-44	2,786	16.7	0.0	\$29,171	3.4	1.4
Men	45-54	2,481	14.9	0.0	\$31,836	3.5	1.3
Men	55-64	1,534	9.2	0.0	\$28,082	3.5	1.2
Men	65-Up	727	4.4	0.0	\$13,961	3.1	1.2
Men	N/A	11	0.1	0.0	\$5,614	1.9	1.0
Men	Total	16,648	100.0	40.6	\$19,691	3.2	1.5
N/A	N/A	4,020	100.0	0.0	\$5,126	1.7	1.1
N/A	Total	4,020	100.0	9.8	\$5,126	1.7	1.1
Total	00-19	5,618	13.7	0.0	\$4,265	2.7	1.7
Total	20-24	6,354	15.5	0.0	\$9,166	3.0	1.8
Total	25-34	7,098	17.3	0.0	\$16,454	3.2	1.6
Total	35-44	6,601	16.1	0.0	\$21,539	3.4	1.4
Total	45-54	6,281	15.3	0.0	\$22,815	3.5	1.3
Total	55-64	3,493	8.5	0.0	\$20,752	3.4	1.2
Total	65-Up	1,487	3.6	0.0	\$11,392	3.2	1.2
Total	N/A	4,039	9.9	0.0	\$5,125	1.7	1.1
Total	Total	40,971	100.0	100.0	\$14,513	3.0	1.5

Note: Persons worked any time during the year.

Industry Determination: Based on the industry of employment in which the person made the most money in the year.

N/A: Represents persons with demographic data that are unavailable.

N/A = Nonresidents, individuals for whom demographic data are not available.

Source: Demographics of Persons Working in Wyoming by County, Industry, Age, & Gender, 2000-2017.

Research & Planning, Wyoming Department of Workforce Services.

Prepared by M. Moore, Research & Planning, WY DWS, 6/12/18.

### Average Earnings by Age and Gender in the 44 & 45 - Retail Trade Industry in 2004

Gender	Age Group	Number	Age Percent	Gender Percent	Average Annual Wage	Average Quarters Worked	Average Annual Employers
Women	00-19	2,834	13.7	0.0	\$4,106	2.8	1.7
Women	20-24	3,518	17.0	0.0	\$8,270	3.0	1.8
Women	25-34	3,722	18.0	0.0	\$12,951	3.2	1.6
Women	35-44	3,726	18.0	0.0	\$16,653	3.4	1.5
Women	45-54	3,883	18.8	0.0	\$17,564	3.5	1.4
Women	55-64	2,173	10.5	0.0	\$15,687	3.4	1.2
Women	65-Up	799	3.9	0.0	\$9,527	3.2	1.1
Women	N/A	8	0.0	0.0	\$5,006	1.9	1.0
<b>Women</b>	<b>Total</b>	<b>20,663</b>	<b>100.0</b>	<b>50.8</b>	<b>\$12,628</b>	<b>3.2</b>	<b>1.5</b>
Men	00-19	2,609	15.8	0.0	\$4,287	2.7	1.6
Men	20-24	2,939	17.8	0.0	\$10,989	3.0	1.8
Men	25-34	3,466	21.0	0.0	\$21,663	3.3	1.6
Men	35-44	2,720	16.5	0.0	\$30,339	3.5	1.4
Men	45-54	2,481	15.0	0.0	\$33,424	3.5	1.3
Men	55-64	1,538	9.3	0.0	\$30,589	3.5	1.2
Men	65-Up	735	4.5	0.0	\$14,937	3.2	1.2
Men	N/A	7	0.0	0.0	\$15,478	2.6	1.3
<b>Men</b>	<b>Total</b>	<b>16,495</b>	<b>100.0</b>	<b>40.6</b>	<b>\$20,742</b>	<b>3.2</b>	<b>1.5</b>
N/A	N/A	3,516	100.0	0.0	\$5,667	1.8	1.2
<b>N/A</b>	<b>Total</b>	<b>3,516</b>	<b>100.0</b>	<b>8.6</b>	<b>\$5,667</b>	<b>1.8</b>	<b>1.2</b>
Total	00-19	5,443	13.4	0.0	\$4,193	2.8	1.7
Total	20-24	6,457	15.9	0.0	\$9,508	3.0	1.8
Total	25-34	7,188	17.7	0.0	\$17,152	3.2	1.6
Total	35-44	6,446	15.8	0.0	\$22,428	3.4	1.4
Total	45-54	6,364	15.6	0.0	\$23,747	3.5	1.3
Total	55-64	3,711	9.1	0.0	\$21,863	3.5	1.2
Total	65-Up	1,534	3.8	0.0	\$12,120	3.2	1.1
Total	N/A	3,531	8.7	0.0	\$5,685	1.8	1.2
<b>Total</b>	<b>Total</b>	<b>40,674</b>	<b>100.0</b>	<b>100.0</b>	<b>\$15,317</b>	<b>3.1</b>	<b>1.5</b>

Note: Persons worked any time during the year.

Industry Determination: Based on the industry of employment in which the person made the most money in the year.

N/A: Represents persons with demographic data that are unavailable.

N/A = Nonresidents, individuals for whom demographic data are not available.

Source: Demographics of Persons Working in Wyoming by County, Industry, Age, & Gender, 2000-2017.  
Research & Planning, Wyoming Department of Workforce Services.

Prepared by M. Moore, Research & Planning, WY DWS, 6/12/18.



### Average Earnings by Age and Gender in the 44 & 45 - Retail Trade Industry in 2005

Gender	Age Group	Number	Age Percent	Gender Percent	Average Annual Wage	Average Quarters Worked	Average Annual Employers
Women	00-19	2,847	13.5	0.0	\$4,242	2.8	1.8
Women	20-24	3,613	17.1	0.0	\$8,276	3.0	1.8
Women	25-34	3,881	18.4	0.0	\$13,180	3.2	1.7
Women	35-44	3,559	16.9	0.0	\$17,197	3.4	1.5
Women	45-54	4,012	19.0	0.0	\$18,413	3.5	1.4
Women	55-64	2,338	11.1	0.0	\$16,400	3.4	1.3
Women	65-Up	863	4.1	0.0	\$10,319	3.2	1.1
Women	N/A	7	0.0	0.0	\$5,571	2.1	1.4
Women	Total	21,120	100.0	51.7	\$13,044	3.2	1.6
Men	00-19	2,635	16.0	0.0	\$4,425	2.7	1.7
Men	20-24	2,831	17.2	0.0	\$11,056	3.0	1.8
Men	25-34	3,436	20.9	0.0	\$22,810	3.3	1.6
Men	35-44	2,656	16.1	0.0	\$31,429	3.5	1.4
Men	45-54	2,490	15.1	0.0	\$35,647	3.5	1.3
Men	55-64	1,624	9.9	0.0	\$32,256	3.5	1.2
Men	65-Up	787	4.8	0.0	\$15,461	3.2	1.2
Men	N/A	8	0.0	0.0	\$12,422	2.3	1.0
Men	Total	16,467	100.0	40.3	\$21,754	3.2	1.5
N/A	N/A	3,290	100.0	0.0	\$6,016	1.9	1.2
N/A	Total	3,290	100.0	8.0	\$6,016	1.9	1.2
Total	00-19	5,482	13.4	0.0	\$4,330	2.7	1.7
Total	20-24	6,444	15.8	0.0	\$9,497	3.0	1.8
Total	25-34	7,317	17.9	0.0	\$17,702	3.2	1.6
Total	35-44	6,215	15.2	0.0	\$23,279	3.4	1.5
Total	45-54	6,502	15.9	0.0	\$25,013	3.5	1.4
Total	55-64	3,962	9.7	0.0	\$22,900	3.5	1.2
Total	65-Up	1,650	4.0	0.0	\$12,772	3.2	1.1
Total	N/A	3,305	8.1	0.0	\$6,030	1.9	1.2
Total	Total	40,877	100.0	100.0	\$15,987	3.1	1.5

Note: Persons worked any time during the year.

Industry Determination: Based on the industry of employment in which the person made the most money in the year.

N/A: Represents persons with demographic data that are unavailable.

N/A = Nonresidents, individuals for whom demographic data are not available.

Source: Demographics of Persons Working in Wyoming by County, Industry, Age, & Gender, 2000-2017.

Research & Planning, Wyoming Department of Workforce Services.

Prepared by M. Moore, Research & Planning, WY DWS, 6/12/18.

### Average Earnings by Age and Gender in the 44 & 45 - Retail Trade Industry in 2006

Gender	Age Group	Number	Age Percent	Gender Percent	Average Annual Wage	Average Quarters Worked	Average Annual Employers
Women	00-19	3,190	14.7	0.0	\$4,406	2.8	1.8
Women	20-24	3,601	16.6	0.0	\$8,885	3.0	1.9
Women	25-34	3,854	17.8	0.0	\$14,077	3.1	1.6
Women	35-44	3,440	15.9	0.0	\$17,529	3.3	1.6
Women	45-54	4,151	19.2	0.0	\$19,044	3.4	1.4
Women	55-64	2,488	11.5	0.0	\$17,327	3.4	1.3
Women	65-Up	912	4.2	0.0	\$10,759	3.3	1.2
Women	N/A	4	0.0	0.0	\$9,431	2.3	1.0
Women	Total	21,640	100.0	51.0	\$13,522	3.2	1.6
Men	00-19	2,988	17.6	0.0	\$4,516	2.7	1.7
Men	20-24	2,871	16.9	0.0	\$11,691	3.0	1.8
Men	25-34	3,365	19.8	0.0	\$24,435	3.3	1.6
Men	35-44	2,613	15.4	0.0	\$33,537	3.4	1.4
Men	45-54	2,526	14.9	0.0	\$37,395	3.5	1.3
Men	55-64	1,761	10.4	0.0	\$35,648	3.5	1.2
Men	65-Up	827	4.9	0.0	\$15,692	3.2	1.2
Men	N/A	8	0.0	0.0	\$8,664	1.5	1.0
Men	Total	16,959	100.0	40.0	\$22,831	3.2	1.5
N/A	N/A	3,802	100.0	0.0	\$6,234	1.9	1.2
N/A	Total	3,802	100.0	9.0	\$6,234	1.9	1.2
Total	00-19	6,178	14.6	0.0	\$4,459	2.7	1.8
Total	20-24	6,472	15.3	0.0	\$10,130	3.0	1.9
Total	25-34	7,219	17.0	0.0	\$18,905	3.2	1.6
Total	35-44	6,053	14.3	0.0	\$24,439	3.4	1.5
Total	45-54	6,677	15.7	0.0	\$25,986	3.5	1.4
Total	55-64	4,249	10.0	0.0	\$24,920	3.4	1.3
Total	65-Up	1,739	4.1	0.0	\$13,105	3.3	1.2
Total	N/A	3,814	9.0	0.0	\$6,242	1.9	1.2
Total	Total	42,401	100.0	100.0	\$16,592	3.1	1.5

Note: Persons worked any time during the year.

Industry Determination: Based on the industry of employment in which the person made the most money in the year.

N/A: Represents persons with demographic data that are unavailable.

N/A = Nonresidents, individuals for whom demographic data are not available.

Source: Demographics of Persons Working in Wyoming by County, Industry, Age, & Gender, 2000-2017.

Research & Planning, Wyoming Department of Workforce Services.

Prepared by M. Moore, Research & Planning, WY DWS, 6/12/18.

### Average Earnings by Age and Gender in the 44 & 45 - Retail Trade Industry in 2007

Gender	Age Group	Number	Age Percent	Gender Percent	Average Annual Wage	Average Quarters Worked	Average Annual Employers
Women	00-19	3,346	14.5	0.0	\$4,492	2.8	1.8
Women	20-24	3,788	16.4	0.0	\$9,575	3.0	1.9
Women	25-34	4,230	18.3	0.0	\$14,827	3.1	1.7
Women	35-44	3,569	15.5	0.0	\$18,725	3.3	1.6
Women	45-54	4,368	18.9	0.0	\$20,081	3.5	1.4
Women	55-64	2,684	11.6	0.0	\$18,615	3.5	1.2
Women	65-Up	1,065	4.6	0.0	\$11,119	3.3	1.2
Women	N/A	6	0.0	0.0	\$7,801	2.0	1.0
Women	Total	23,056	100.0	50.7	\$14,331	3.2	1.6
Men	00-19	3,175	17.3	0.0	\$5,101	2.7	1.7
Men	20-24	3,095	16.9	0.0	\$12,467	3.0	1.8
Men	25-34	3,784	20.6	0.0	\$25,442	3.3	1.7
Men	35-44	2,734	14.9	0.0	\$34,017	3.4	1.5
Men	45-54	2,731	14.9	0.0	\$38,479	3.5	1.3
Men	55-64	1,908	10.4	0.0	\$36,236	3.5	1.2
Men	65-Up	933	5.1	0.0	\$15,453	3.2	1.2
Men	N/A	3	0.0	0.0	\$16,297	2.3	1.0
Men	Total	18,363	100.0	40.4	\$23,566	3.2	1.6
N/A	N/A	4,040	100.0	0.0	\$6,565	1.8	1.2
N/A	Total	4,040	100.0	8.9	\$6,565	1.8	1.2
Total	00-19	6,521	14.3	0.0	\$4,788	2.7	1.8
Total	20-24	6,883	15.1	0.0	\$10,875	3.0	1.9
Total	25-34	8,014	17.6	0.0	\$19,839	3.2	1.7
Total	35-44	6,303	13.9	0.0	\$25,358	3.4	1.5
Total	45-54	7,099	15.6	0.0	\$27,159	3.5	1.4
Total	55-64	4,592	10.1	0.0	\$25,937	3.5	1.2
Total	65-Up	1,998	4.4	0.0	\$13,142	3.2	1.2
Total	N/A	4,049	8.9	0.0	\$6,574	1.8	1.2
Total	Total	45,459	100.0	100.0	\$17,371	3.1	1.5

Note: Persons worked any time during the year.

Industry Determination: Based on the industry of employment in which the person made the most money in the year.

N/A: Represents persons with demographic data that are unavailable.

N/A = Nonresidents, individuals for whom demographic data are not available.

Source: Demographics of Persons Working in Wyoming by County, Industry, Age, & Gender, 2000-2017.

Research & Planning, Wyoming Department of Workforce Services.

Prepared by M. Moore, Research & Planning, WY DWS, 6/12/18.

### Average Earnings by Age and Gender in the 44 & 45 - Retail Trade Industry in 2008

Gender	Age Group	Number	Age Percent	Gender Percent	Average Annual Wage	Average Quarters Worked	Average Annual Employers
Women	00-19	3,111	13.9	0.0	\$4,833	2.8	1.8
Women	20-24	3,603	16.1	0.0	\$10,126	2.9	1.8
Women	25-34	4,115	18.4	0.0	\$16,254	3.2	1.6
Women	35-44	3,460	15.5	0.0	\$19,476	3.3	1.5
Women	45-54	4,212	18.9	0.0	\$21,107	3.5	1.4
Women	55-64	2,732	12.2	0.0	\$19,332	3.5	1.3
Women	65-Up	1,090	4.9	0.0	\$12,191	3.3	1.2
Women	N/A	4	0.0	0.0	\$3,876	1.5	1.0
Women	Total	22,327	100.0	49.2	\$15,265	3.2	1.6
Men	00-19	3,009	16.5	0.0	\$5,278	2.7	1.6
Men	20-24	3,042	16.7	0.0	\$13,326	3.0	1.8
Men	25-34	3,744	20.5	0.0	\$26,167	3.3	1.6
Men	35-44	2,681	14.7	0.0	\$35,168	3.5	1.4
Men	45-54	2,774	15.2	0.0	\$38,602	3.5	1.3
Men	55-64	2,003	11.0	0.0	\$36,544	3.5	1.2
Men	65-Up	968	5.3	0.0	\$16,757	3.3	1.2
Men	N/A	2	0.0	0.0	\$20,743	2.5	1.0
Men	Total	18,223	100.0	40.2	\$24,431	3.2	1.5
N/A	N/A	4,828	100.0	0.0	\$6,522	1.7	1.2
N/A	Total	4,828	100.0	10.6	\$6,522	1.7	1.2
Total	00-19	6,120	13.5	0.0	\$5,051	2.7	1.7
Total	20-24	6,645	14.6	0.0	\$11,591	3.0	1.8
Total	25-34	7,859	17.3	0.0	\$20,977	3.2	1.6
Total	35-44	6,141	13.5	0.0	\$26,327	3.4	1.5
Total	45-54	6,986	15.4	0.0	\$28,054	3.5	1.4
Total	55-64	4,735	10.4	0.0	\$26,613	3.5	1.3
Total	65-Up	2,058	4.5	0.0	\$14,339	3.3	1.2
Total	N/A	4,834	10.7	0.0	\$6,526	1.7	1.2
Total	Total	45,378	100.0	100.0	\$18,016	3.1	1.5

Note: Persons worked any time during the year.

Industry Determination: Based on the industry of employment in which the person made the most money in the year.

N/A: Represents persons with demographic data that are unavailable.

N/A = Nonresidents, individuals for whom demographic data are not available.

Source: Demographics of Persons Working in Wyoming by County, Industry, Age, & Gender, 2000-2017.

Research & Planning, Wyoming Department of Workforce Services.

Prepared by M. Moore, Research & Planning, WY DWS, 6/12/18.

### Average Earnings by Age and Gender in the 44 & 45 - Retail Trade Industry in 2009

Gender	Age Group	Number	Age Percent	Gender Percent	Average Annual Wage	Average Quarters Worked	Average Annual Employers
Women	00-19	2,460	11.7	0.0	\$5,047	2.8	1.5
Women	20-24	3,398	16.2	0.0	\$10,445	3.0	1.6
Women	25-34	4,078	19.4	0.0	\$16,527	3.2	1.4
Women	35-44	3,266	15.6	0.0	\$19,545	3.4	1.4
Women	45-54	3,996	19.0	0.0	\$21,780	3.5	1.3
Women	55-64	2,733	13.0	0.0	\$20,327	3.6	1.2
Women	65-Up	1,064	5.1	0.0	\$12,639	3.4	1.1
Women	N/A	2	0.0	0.0	\$2,700	1.0	1.0
Women	Total	20,997	100.0	50.4	\$15,963	3.3	1.4
Men	00-19	2,326	13.2	0.0	\$5,272	2.7	1.4
Men	20-24	3,110	17.6	0.0	\$13,221	3.0	1.5
Men	25-34	3,858	21.9	0.0	\$24,292	3.3	1.4
Men	35-44	2,651	15.0	0.0	\$32,671	3.4	1.3
Men	45-54	2,674	15.2	0.0	\$37,424	3.5	1.2
Men	55-64	2,036	11.5	0.0	\$35,194	3.5	1.2
Men	65-Up	978	5.5	0.0	\$16,902	3.3	1.2
Men	N/A	3	0.0	0.0	\$15,997	2.3	1.0
Men	Total	17,636	100.0	42.4	\$23,929	3.3	1.3
N/A	N/A	3,001	100.0	0.0	\$8,220	2.0	1.1
N/A	Total	3,001	100.0	7.2	\$8,220	2.0	1.1
Total	00-19	4,786	11.5	0.0	\$5,156	2.8	1.5
Total	20-24	6,508	15.6	0.0	\$11,771	3.0	1.6
Total	25-34	7,936	19.1	0.0	\$20,302	3.2	1.4
Total	35-44	5,917	14.2	0.0	\$25,426	3.4	1.4
Total	45-54	6,670	16.0	0.0	\$28,052	3.5	1.3
Total	55-64	4,769	11.5	0.0	\$26,674	3.6	1.2
Total	65-Up	2,042	4.9	0.0	\$14,681	3.3	1.1
Total	N/A	3,006	7.2	0.0	\$8,224	2.0	1.1
Total	Total	41,634	100.0	100.0	\$18,779	3.2	1.3

Note: Persons worked any time during the year.

Industry Determination: Based on the industry of employment in which the person made the most money in the year.

N/A: Represents persons with demographic data that are unavailable.

N/A = Nonresidents, individuals for whom demographic data are not available.

Source: Demographics of Persons Working in Wyoming by County, Industry, Age, & Gender, 2000-2017.

Research & Planning, Wyoming Department of Workforce Services.

Prepared by M. Moore, Research & Planning, WY DWS, 6/12/18.

### Average Earnings by Age and Gender in the 44 & 45 - Retail Trade Industry in 2010

Gender	Age Group	Number	Age Percent	Gender Percent	Average Annual Wage	Average Quarters Worked	Average Annual Employers
Women	00-19	2,273	11.2	0.0	\$4,727	2.7	1.5
Women	20-24	3,425	16.9	0.0	\$10,088	3.0	1.6
Women	25-34	3,936	19.4	0.0	\$16,606	3.2	1.5
Women	35-44	3,055	15.1	0.0	\$20,267	3.4	1.4
Women	45-54	3,849	19.0	0.0	\$21,490	3.5	1.3
Women	55-64	2,710	13.4	0.0	\$20,551	3.6	1.2
Women	65-Up	1,039	5.1	0.0	\$12,784	3.3	1.1
Women	N/A	2	0.0	0.0	\$2,279	1.0	1.0
Women	Total	20,289	100.0	50.4	\$15,983	3.3	1.4
Men	00-19	2,138	12.2	0.0	\$5,056	2.6	1.4
Men	20-24	3,162	18.1	0.0	\$12,759	3.0	1.6
Men	25-34	3,976	22.7	0.0	\$24,303	3.3	1.5
Men	35-44	2,615	14.9	0.0	\$33,918	3.4	1.4
Men	45-54	2,647	15.1	0.0	\$36,803	3.5	1.3
Men	55-64	2,019	11.5	0.0	\$35,622	3.6	1.2
Men	65-Up	949	5.4	0.0	\$17,638	3.3	1.2
Men	N/A	2	0.0	0.0	\$22,343	2.5	1.0
Men	Total	17,508	100.0	43.5	\$24,137	3.2	1.4
N/A	N/A	2,452	100.0	0.0	\$8,468	2.1	1.1
N/A	Total	2,452	100.0	6.1	\$8,468	2.1	1.1
Total	00-19	4,411	11.0	0.0	\$4,887	2.6	1.5
Total	20-24	6,587	16.4	0.0	\$11,370	3.0	1.6
Total	25-34	7,912	19.7	0.0	\$20,474	3.2	1.5
Total	35-44	5,670	14.1	0.0	\$26,563	3.4	1.4
Total	45-54	6,496	16.1	0.0	\$27,730	3.5	1.3
Total	55-64	4,729	11.7	0.0	\$26,985	3.6	1.2
Total	65-Up	1,988	4.9	0.0	\$15,101	3.3	1.1
Total	N/A	2,456	6.1	0.0	\$8,474	2.1	1.1
Total	Total	40,249	100.0	100.0	\$19,072	3.2	1.4

Note: Persons worked any time during the year.

Industry Determination: Based on the industry of employment in which the person made the most money in the year.

N/A: Represents persons with demographic data that are unavailable.

N/A = Nonresidents, individuals for whom demographic data are not available.

Source: Demographics of Persons Working in Wyoming by County, Industry, Age, & Gender, 2000-2017.

Research & Planning, Wyoming Department of Workforce Services.

Prepared by M. Moore, Research & Planning, WY DWS, 6/12/18.

### Average Earnings by Age and Gender in the 44 & 45 - Retail Trade Industry in 2011

Gender	Age Group	Number	Age Percent	Gender Percent	Average Annual Wage	Average Quarters Worked	Average Annual Employers
Women	00-19	2,177	10.8	0.0	\$4,581	2.7	1.6
Women	20-24	3,564	17.7	0.0	\$9,870	3.0	1.6
Women	25-34	3,856	19.2	0.0	\$16,948	3.2	1.5
Women	35-44	3,068	15.3	0.0	\$20,584	3.3	1.4
Women	45-54	3,594	17.9	0.0	\$21,384	3.4	1.3
Women	55-64	2,767	13.8	0.0	\$21,139	3.5	1.2
Women	65-Up	1,083	5.4	0.0	\$13,290	3.3	1.1
Women	N/A	2	0.0	0.0	\$9,047	1.0	1.0
Women	Total	20,111	100.0	50.1	\$16,081	3.2	1.4
Men	00-19	2,038	11.8	0.0	\$5,193	2.6	1.5
Men	20-24	3,260	18.9	0.0	\$13,179	3.1	1.6
Men	25-34	3,933	22.8	0.0	\$25,403	3.3	1.5
Men	35-44	2,557	14.8	0.0	\$35,978	3.5	1.3
Men	45-54	2,512	14.5	0.0	\$38,683	3.5	1.2
Men	55-64	2,048	11.9	0.0	\$36,724	3.5	1.2
Men	65-Up	920	5.3	0.0	\$19,542	3.3	1.2
Men	N/A	1	0.0	0.0	\$40,000	4.0	1.0
Men	Total	17,269	100.0	43.0	\$25,239	3.3	1.4
N/A	N/A	2,779	100.0	0.0	\$8,896	2.1	1.1
N/A	Total	2,779	100.0	6.9	\$8,896	2.1	1.1
Total	00-19	4,215	10.5	0.0	\$4,877	2.7	1.5
Total	20-24	6,824	17.0	0.0	\$11,451	3.0	1.6
Total	25-34	7,789	19.4	0.0	\$21,218	3.2	1.5
Total	35-44	5,625	14.0	0.0	\$27,582	3.4	1.4
Total	45-54	6,106	15.2	0.0	\$28,501	3.5	1.3
Total	55-64	4,815	12.0	0.0	\$27,768	3.5	1.2
Total	65-Up	2,003	5.0	0.0	\$16,162	3.3	1.1
Total	N/A	2,782	6.9	0.0	\$8,908	2.1	1.1
Total	Total	40,159	100.0	100.0	\$19,522	3.2	1.4

Note: Persons worked any time during the year.

Industry Determination: Based on the industry of employment in which the person made the most money in the year.

N/A: Represents persons with demographic data that are unavailable.

N/A = Nonresidents, individuals for whom demographic data are not available.

Source: Demographics of Persons Working in Wyoming by County, Industry, Age, & Gender, 2000-2017.

Research & Planning, Wyoming Department of Workforce Services.

Prepared by M. Moore, Research & Planning, WY DWS, 6/12/18.

### Average Earnings by Age and Gender in the 44 & 45 - Retail Trade Industry in 2012

Gender	Age Group	Number	Age Percent	Gender Percent	Average Annual Wage	Average Quarters Worked	Average Annual Employers
Women	00-19	2,233	11.1	0.0	\$4,791	2.7	1.6
Women	20-24	3,490	17.3	0.0	\$10,287	3.0	1.7
Women	25-34	4,024	19.9	0.0	\$16,899	3.2	1.5
Women	35-44	3,032	15.0	0.0	\$21,512	3.3	1.4
Women	45-54	3,452	17.1	0.0	\$21,789	3.5	1.3
Women	55-64	2,800	13.9	0.0	\$21,890	3.5	1.2
Women	65-Up	1,142	5.7	0.0	\$14,151	3.4	1.1
Women	N/A	1	0.0	0.0	\$70,667	4.0	1.0
Women	Total	20,174	100.0	50.1	\$16,485	3.2	1.4
Men	00-19	2,149	12.3	0.0	\$5,291	2.6	1.5
Men	20-24	3,175	18.2	0.0	\$13,594	3.1	1.6
Men	25-34	3,955	22.6	0.0	\$26,476	3.3	1.4
Men	35-44	2,596	14.9	0.0	\$37,141	3.4	1.3
Men	45-54	2,517	14.4	0.0	\$40,195	3.5	1.3
Men	55-64	2,086	11.9	0.0	\$37,882	3.5	1.2
Men	65-Up	989	5.7	0.0	\$22,215	3.4	1.2
Men	N/A	2	0.0	0.0	\$6,124	2.5	1.0
Men	Total	17,469	100.0	43.4	\$26,208	3.3	1.4
N/A	N/A	2,634	100.0	0.0	\$9,141	2.0	1.2
N/A	Total	2,634	100.0	6.5	\$9,141	2.0	1.2
Total	00-19	4,382	10.9	0.0	\$5,037	2.7	1.5
Total	20-24	6,665	16.5	0.0	\$11,863	3.0	1.6
Total	25-34	7,979	19.8	0.0	\$21,646	3.2	1.5
Total	35-44	5,628	14.0	0.0	\$28,721	3.4	1.4
Total	45-54	5,969	14.8	0.0	\$29,550	3.5	1.3
Total	55-64	4,886	12.1	0.0	\$28,717	3.5	1.2
Total	65-Up	2,131	5.3	0.0	\$17,894	3.4	1.2
Total	N/A	2,637	6.5	0.0	\$9,162	2.0	1.2
Total	Total	40,277	100.0	100.0	\$20,222	3.2	1.4

Note: Persons worked any time during the year.

Industry Determination: Based on the industry of employment in which the person made the most money in the year.

N/A: Represents persons with demographic data that are unavailable.

N/A = Nonresidents, individuals for whom demographic data are not available.

Source: Demographics of Persons Working in Wyoming by County, Industry, Age, & Gender, 2000-2017.

Research & Planning, Wyoming Department of Workforce Services.

Prepared by M. Moore, Research & Planning, WY DWS, 6/12/18.



### Average Earnings by Age and Gender in the 44 & 45 - Retail Trade Industry in 2013

Gender	Age Group	Number	Age Percent	Gender Percent	Average Annual Wage	Average Quarters Worked	Average Annual Employers
Women	00-19	2,312	11.5	0.0	\$4,841	2.7	1.6
Women	20-24	3,426	17.0	0.0	\$10,386	3.0	1.7
Women	25-34	4,061	20.1	0.0	\$17,606	3.2	1.5
Women	35-44	3,036	15.0	0.0	\$21,251	3.3	1.4
Women	45-54	3,405	16.9	0.0	\$22,167	3.4	1.3
Women	55-64	2,766	13.7	0.0	\$22,662	3.5	1.2
Women	65-Up	1,176	5.8	0.0	\$13,994	3.3	1.1
Women	N/A	2	0.0	0.0	\$4,569	1.5	1.0
Women	Total	20,184	100.0	50.0	\$16,717	3.2	1.4
Men	00-19	2,084	11.9	0.0	\$5,206	2.7	1.5
Men	20-24	3,179	18.1	0.0	\$14,179	3.1	1.7
Men	25-34	3,984	22.7	0.0	\$26,468	3.3	1.5
Men	35-44	2,613	14.9	0.0	\$37,315	3.5	1.4
Men	45-54	2,505	14.3	0.0	\$39,964	3.5	1.3
Men	55-64	2,097	12.0	0.0	\$36,631	3.5	1.2
Men	65-Up	1,060	6.0	0.0	\$22,314	3.3	1.2
Men	N/A	2	0.0	0.0	\$12,191	3.5	1.0
Men	Total	17,524	100.0	43.4	\$26,220	3.3	1.4
N/A	N/A	2,661	100.0	0.0	\$9,454	2.1	1.2
N/A	Total	2,661	100.0	6.6	\$9,454	2.1	1.2
Total	00-19	4,396	10.9	0.0	\$5,014	2.7	1.6
Total	20-24	6,605	16.4	0.0	\$12,211	3.0	1.7
Total	25-34	8,045	19.9	0.0	\$21,994	3.3	1.5
Total	35-44	5,649	14.0	0.0	\$28,682	3.4	1.4
Total	45-54	5,910	14.6	0.0	\$29,710	3.5	1.3
Total	55-64	4,863	12.0	0.0	\$28,686	3.5	1.2
Total	65-Up	2,236	5.5	0.0	\$17,938	3.3	1.1
Total	N/A	2,665	6.6	0.0	\$9,452	2.1	1.2
Total	Total	40,369	100.0	100.0	\$20,363	3.2	1.4

Note: Persons worked any time during the year.

Industry Determination: Based on the industry of employment in which the person made the most money in the year.

N/A: Represents persons with demographic data that are unavailable.

N/A = Nonresidents, individuals for whom demographic data are not available.

Source: Demographics of Persons Working in Wyoming by County, Industry, Age, & Gender, 2000-2017.

Research & Planning, Wyoming Department of Workforce Services.

Prepared by M. Moore, Research & Planning, WY DWS, 6/12/18.

### Average Earnings by Age and Gender in the 44 & 45 - Retail Trade Industry in 2014

Gender	Age Group	Number	Age Percent	Gender Percent	Average Annual Wage	Average Quarters Worked	Average Annual Employers
Women	00-19	2,421	11.8	0.0	\$4,913	2.7	1.6
Women	20-24	3,481	16.9	0.0	\$10,786	3.0	1.7
Women	25-34	4,141	20.1	0.0	\$17,618	3.2	1.5
Women	35-44	3,075	14.9	0.0	\$22,252	3.3	1.5
Women	45-54	3,372	16.4	0.0	\$22,706	3.4	1.4
Women	55-64	2,823	13.7	0.0	\$23,444	3.5	1.2
Women	65-Up	1,255	6.1	0.0	\$14,424	3.3	1.1
Women	N/A	4	0.0	0.0	\$8,405	1.8	1.0
Women	Total	20,572	100.0	50.1	\$17,096	3.2	1.5
Men	00-19	2,202	12.6	0.0	\$5,602	2.6	1.6
Men	20-24	3,002	17.1	0.0	\$15,144	3.1	1.7
Men	25-34	4,053	23.1	0.0	\$27,316	3.3	1.5
Men	35-44	2,592	14.8	0.0	\$39,073	3.5	1.4
Men	45-54	2,452	14.0	0.0	\$40,879	3.5	1.3
Men	55-64	2,157	12.3	0.0	\$37,387	3.5	1.2
Men	65-Up	1,081	6.2	0.0	\$23,902	3.4	1.2
Men	N/A	3	0.0	0.0	\$9,616	2.7	1.0
Men	Total	17,542	100.0	42.7	\$27,165	3.3	1.4
N/A	N/A	2,963	100.0	0.0	\$9,913	2.1	1.2
N/A	Total	2,963	100.0	7.2	\$9,913	2.1	1.2
Total	00-19	4,623	11.3	0.0	\$5,241	2.7	1.6
Total	20-24	6,483	15.8	0.0	\$12,804	3.0	1.7
Total	25-34	8,194	19.9	0.0	\$22,415	3.2	1.5
Total	35-44	5,667	13.8	0.0	\$29,946	3.4	1.4
Total	45-54	5,824	14.2	0.0	\$30,357	3.5	1.3
Total	55-64	4,980	12.1	0.0	\$29,483	3.5	1.2
Total	65-Up	2,336	5.7	0.0	\$18,810	3.3	1.1
Total	N/A	2,970	7.2	0.0	\$9,911	2.1	1.2
Total	Total	41,077	100.0	100.0	\$20,878	3.2	1.4

Note: Persons worked any time during the year.

Industry Determination: Based on the industry of employment in which the person made the most money in the year.

N/A: Represents persons with demographic data that are unavailable.

N/A = Nonresidents, individuals for whom demographic data are not available.

Source: Demographics of Persons Working in Wyoming by County, Industry, Age, & Gender, 2000-2017.

Research & Planning, Wyoming Department of Workforce Services.

Prepared by M. Moore, Research & Planning, WY DWS, 6/12/18.

### Average Earnings by Age and Gender in the 44 & 45 - Retail Trade Industry in 2015

Gender	Age Group	Number	Age Percent	Gender Percent	Average Annual Wage	Average Quarters Worked	Average Annual Employers
Women	00-19	2,468	12.1	0.0	\$5,225	2.7	1.6
Women	20-24	3,303	16.2	0.0	\$11,366	3.0	1.7
Women	25-34	4,105	20.1	0.0	\$18,269	3.2	1.5
Women	35-44	3,174	15.5	0.0	\$22,570	3.3	1.5
Women	45-54	3,191	15.6	0.0	\$23,440	3.5	1.4
Women	55-64	2,891	14.2	0.0	\$23,755	3.6	1.3
Women	65-Up	1,295	6.3	0.0	\$15,249	3.3	1.1
Women	N/A	2	0.0	0.0	\$4,356	1.0	1.0
Women	Total	20,429	100.0	48.7	\$17,637	3.2	1.5
Men	00-19	2,268	12.4	0.0	\$5,856	2.7	1.5
Men	20-24	3,146	17.3	0.0	\$15,534	3.2	1.7
Men	25-34	4,225	23.2	0.0	\$27,338	3.3	1.5
Men	35-44	2,733	15.0	0.0	\$38,403	3.5	1.4
Men	45-54	2,470	13.6	0.0	\$40,838	3.6	1.3
Men	55-64	2,199	12.1	0.0	\$40,206	3.6	1.2
Men	65-Up	1,175	6.4	0.0	\$22,211	3.4	1.2
Men	N/A	4	0.0	0.0	\$8,932	2.8	1.0
Men	Total	18,220	100.0	43.5	\$27,334	3.3	1.4
N/A	N/A	3,276	100.0	0.0	\$10,353	2.1	1.2
N/A	Total	3,276	100.0	7.8	\$10,353	2.1	1.2
Total	00-19	4,736	11.3	0.0	\$5,527	2.7	1.6
Total	20-24	6,449	15.4	0.0	\$13,399	3.1	1.7
Total	25-34	8,330	19.9	0.0	\$22,869	3.3	1.5
Total	35-44	5,907	14.1	0.0	\$29,896	3.4	1.4
Total	45-54	5,661	13.5	0.0	\$31,031	3.5	1.4
Total	55-64	5,090	12.1	0.0	\$30,862	3.6	1.2
Total	65-Up	2,470	5.9	0.0	\$18,561	3.4	1.2
Total	N/A	3,282	7.8	0.0	\$10,348	2.1	1.2
Total	Total	41,925	100.0	100.0	\$21,282	3.2	1.4

Note: Persons worked any time during the year.

Industry Determination: Based on the industry of employment in which the person made the most money in the year.

N/A: Represents persons with demographic data that are unavailable.

N/A = Nonresidents, individuals for whom demographic data are not available.

Source: Demographics of Persons Working in Wyoming by County, Industry, Age, & Gender, 2000-2017.

Research & Planning, Wyoming Department of Workforce Services.

Prepared by M. Moore, Research & Planning, WY DWS, 6/12/18.

### Average Earnings by Age and Gender in the 44 & 45 - Retail Trade Industry in 2016

Gender	Age Group	Number	Age Percent	Gender Percent	Average Annual Wage	Average Quarters Worked	Average Annual Employers
Women	00-19	2,265	11.5	0.0	\$5,313	2.8	1.6
Women	20-24	3,130	15.9	0.0	\$11,735	3.1	1.6
Women	25-34	3,952	20.0	0.0	\$18,850	3.3	1.5
Women	35-44	3,077	15.6	0.0	\$23,460	3.4	1.4
Women	45-54	2,994	15.2	0.0	\$23,964	3.5	1.3
Women	55-64	2,973	15.1	0.0	\$23,592	3.6	1.2
Women	65-Up	1,334	6.8	0.0	\$15,525	3.3	1.1
Women	N/A	2	0.0	0.0	\$2,876	1.5	1.0
Women	Total	19,727	100.0	47.6	\$18,150	3.3	1.4
Men	00-19	2,074	11.3	0.0	\$5,742	2.7	1.5
Men	20-24	3,177	17.4	0.0	\$15,408	3.2	1.6
Men	25-34	4,284	23.4	0.0	\$27,139	3.4	1.5
Men	35-44	2,787	15.2	0.0	\$37,465	3.5	1.3
Men	45-54	2,506	13.7	0.0	\$39,730	3.6	1.3
Men	55-64	2,262	12.4	0.0	\$38,777	3.6	1.2
Men	65-Up	1,196	6.5	0.0	\$21,702	3.4	1.1
Men	N/A	3	0.0	0.0	\$8,244	2.3	1.0
Men	Total	18,289	100.0	44.2	\$27,054	3.3	1.4
N/A	N/A	3,387	100.0	0.0	\$10,782	2.2	1.3
N/A	Total	3,387	100.0	8.2	\$10,782	2.2	1.3
Total	00-19	4,339	10.5	0.0	\$5,518	2.7	1.5
Total	20-24	6,307	15.2	0.0	\$13,585	3.1	1.6
Total	25-34	8,236	19.9	0.0	\$23,161	3.3	1.5
Total	35-44	5,864	14.2	0.0	\$30,116	3.4	1.4
Total	45-54	5,500	13.3	0.0	\$31,148	3.5	1.3
Total	55-64	5,235	12.6	0.0	\$30,153	3.6	1.2
Total	65-Up	2,530	6.1	0.0	\$18,445	3.3	1.1
Total	N/A	3,392	8.2	0.0	\$10,775	2.2	1.3
Total	Total	41,403	100.0	100.0	\$21,481	3.2	1.4

Note: Persons worked any time during the year.

Industry Determination: Based on the industry of employment in which the person made the most money in the year.

N/A: Represents persons with demographic data that are unavailable.

N/A = Nonresidents, individuals for whom demographic data are not available.

Source: Demographics of Persons Working in Wyoming by County, Industry, Age, & Gender, 2000-2017.

Research & Planning, Wyoming Department of Workforce Services.

Prepared by M. Moore, Research & Planning, WY DWS, 6/12/18.

### Average Earnings by Age and Gender in the 44 & 45 - Retail Trade Industry in 2017

Gender	Age Group	Number	Age Percent	Gender Percent	Average Annual Wage	Average Quarters Worked	Average Annual Employers
Women	00-19	2,073	11.1	0.0	\$5,543	2.8	1.6
Women	20-24	2,898	15.5	0.0	\$12,271	3.1	1.7
Women	25-34	3,656	19.6	0.0	\$19,679	3.3	1.5
Women	35-44	2,929	15.7	0.0	\$24,002	3.4	1.4
Women	45-54	2,872	15.4	0.0	\$24,668	3.5	1.3
Women	55-64	2,912	15.6	0.0	\$24,418	3.5	1.2
Women	65-Up	1,311	7.0	0.0	\$16,186	3.4	1.1
Women	N/A	2	0.0	0.0	\$670	1.0	1.0
Women	Total	18,653	100.0	46.8	\$18,896	3.3	1.4
Men	00-19	1,833	10.5	0.0	\$6,320	2.7	1.5
Men	20-24	2,848	16.4	0.0	\$15,798	3.2	1.7
Men	25-34	4,100	23.6	0.0	\$28,040	3.4	1.5
Men	35-44	2,728	15.7	0.0	\$39,155	3.5	1.3
Men	45-54	2,422	13.9	0.0	\$40,817	3.5	1.3
Men	55-64	2,240	12.9	0.0	\$39,539	3.5	1.2
Men	65-Up	1,225	7.0	0.0	\$22,751	3.3	1.1
Men	N/A	1	0.0	0.0	\$18,200	4.0	1.0
Men	Total	17,397	100.0	43.6	\$28,377	3.3	1.4
N/A	N/A	3,831	100.0	0.0	\$11,238	2.3	1.3
N/A	Total	3,831	100.0	9.6	\$11,238	2.3	1.3
Total	00-19	3,906	9.8	0.0	\$5,908	2.8	1.6
Total	20-24	5,746	14.4	0.0	\$14,019	3.2	1.7
Total	25-34	7,756	19.4	0.0	\$24,099	3.3	1.5
Total	35-44	5,657	14.2	0.0	\$31,309	3.5	1.4
Total	45-54	5,294	13.3	0.0	\$32,056	3.5	1.3
Total	55-64	5,152	12.9	0.0	\$30,993	3.5	1.2
Total	65-Up	2,536	6.4	0.0	\$19,357	3.3	1.1
Total	N/A	3,834	9.6	0.0	\$11,234	2.3	1.3
Total	Total	39,881	100.0	100.0	\$22,296	3.2	1.4

Note: Persons worked any time during the year.

Industry Determination: Based on the industry of employment in which the person made the most money in the year.

N/A: Represents persons with demographic data that are unavailable.

N/A = Nonresidents, individuals for whom demographic data are not available.

Source: Demographics of Persons Working in Wyoming by County, Industry, Age, & Gender, 2000-2017.

Research & Planning, Wyoming Department of Workforce Services.

Prepared by M. Moore, Research & Planning, WY DWS, 6/12/18.