

# Wyoming Construction (NAICS 23) at a Glance, 2017

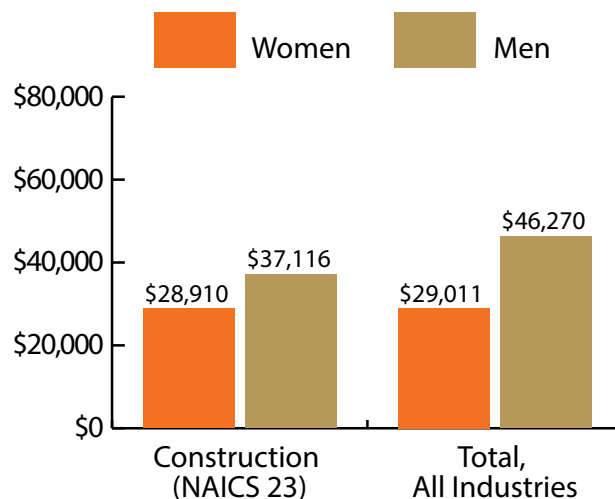
Demographics of Persons Working in Wyoming by County, Industry, Age, & Gender, 2000-2017

**Table: Total Number of Persons Working in Construction (NAICS 23) at Any Time by Gender and Age, 2016-2017**

Gender	2016	2017	Change	
			N	%
Women	2,918	2,713	-205	-7.0
Men	24,242	21,539	-2,703	-11.2
Nonresidents	8,069	7,398	-671	-8.3
<b>Total</b>	<b>35,229</b>	<b>31,650</b>	<b>-3,579</b>	<b>-10.2</b>

Age	2016	2017	Change	
			N	%
00-19	1,003	981	-22	-2.2
20-24	3,013	2,539	-474	-15.7
25-34	7,077	5,947	-1,130	-16.0
35-44	5,993	5,480	-513	-8.6
45-54	4,942	4,371	-571	-11.6
55-64	4,062	3,793	-269	-6.6
65-Up	1,066	1,136	70	6.6
Nonresidents	8,073	7,403	-670	-8.3
<b>Total</b>	<b>35,229</b>	<b>31,650</b>	<b>-3,579</b>	<b>-10.2</b>



### Women's Wages as % of Men's Wages

Construction (NAICS 23): 77.9%

Total, All Industries: 62.7%

Figure: Average Annual Wages by Gender, 2017

Total = 31,650

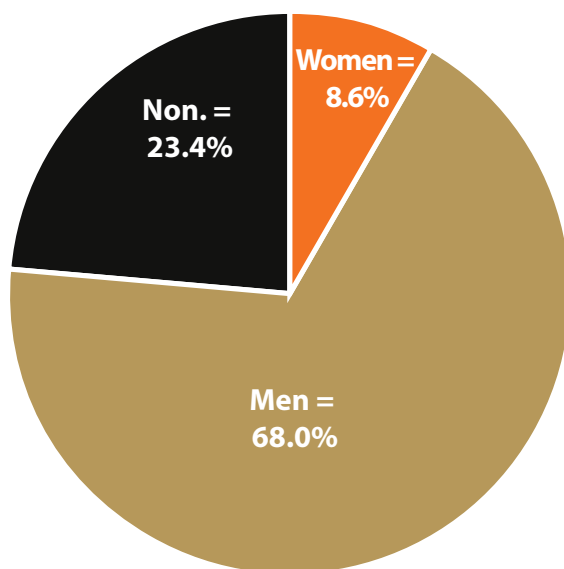


Figure: Persons Working by Gender, 2017

Total = 31,650

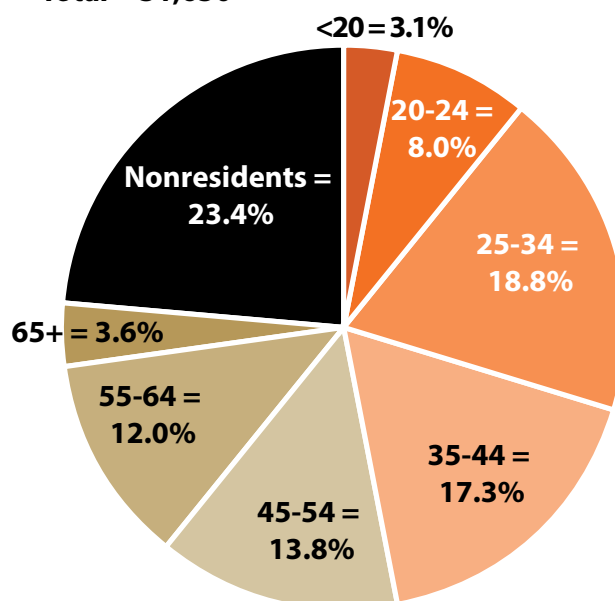


Figure: Persons Working by Age, 2017

Note: Nonresidents are individuals for whom demographic data are not available.

Source: Demographics of Persons Working in Wyoming by County, Industry, Age, & Gender, 2000-2017. Research & Planning, Wyoming Department of Workforce Services. Prepared by M. Moore, Research & Planning, WY DWS, 6/12/18.

## Persons Working in Construction (NAICS 23) in Wyoming by Gender and Age, 2000-2017

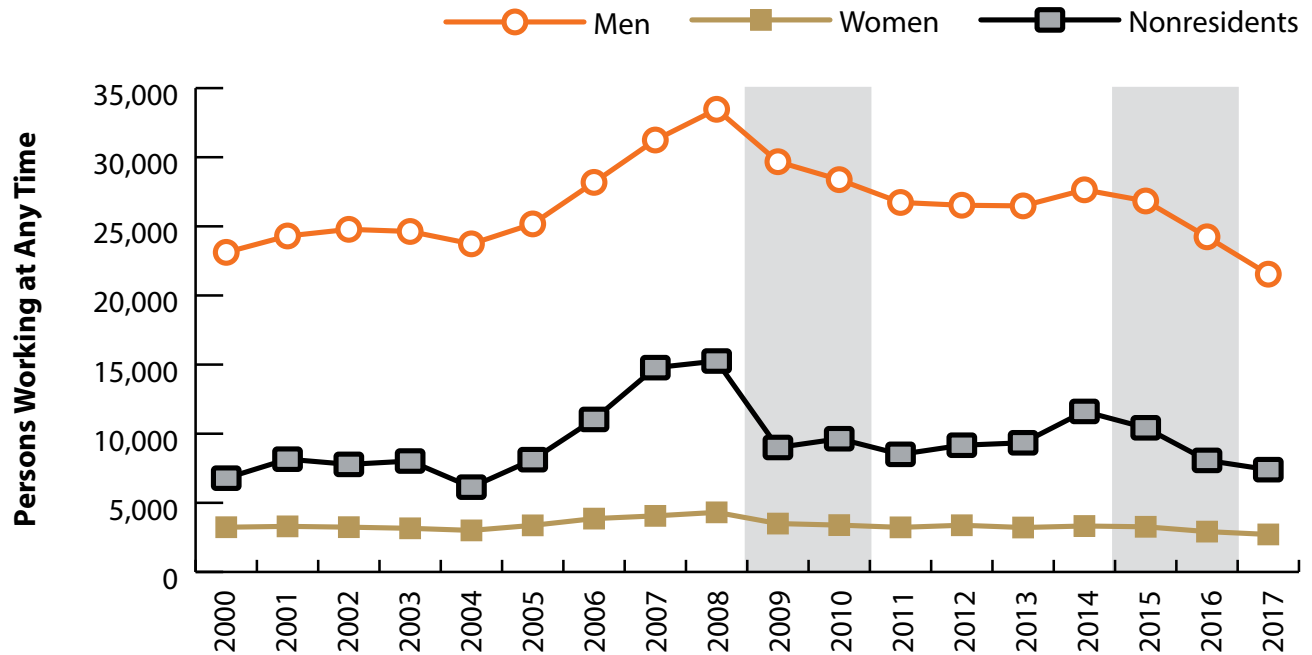


Figure: Persons Working in Construction (NAICS 23) in Wyoming at Any Time by Gender, 2000-2017

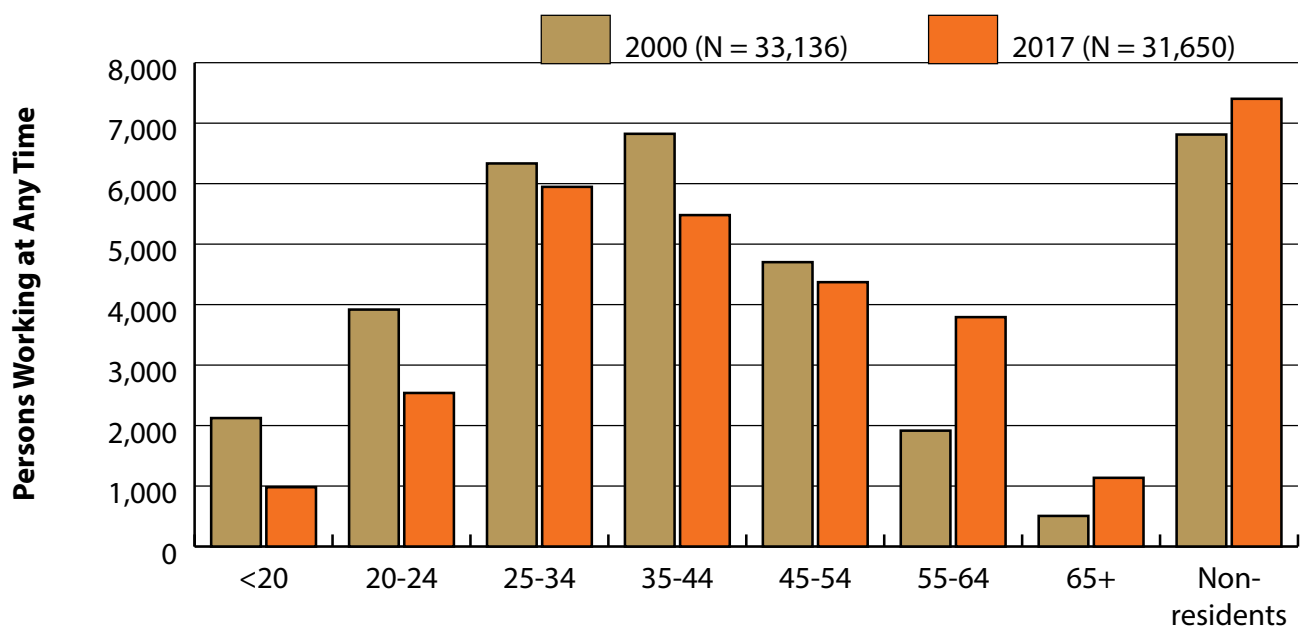


Figure: Persons Working in Construction (NAICS 23) in Wyoming at Any Time by Age, 2000-2017

Note: Nonresidents are individuals for whom demographic data are not available.  
 Shaded areas indicate periods of economic downturn: 2009Q1-2010Q1 and 2015Q2-2016Q4.  
 Source: Demographics of Persons Working in Wyoming by County, Industry, Age, & Gender, 2000-2017. Research & Planning, Wyoming Department of Workforce Services. Prepared by M. Moore, Research & Planning, WY DWS, 6/12/18.

## Wages for Persons Working in Construction (NAICS 23) in Wyoming by Gender, 2000-2017

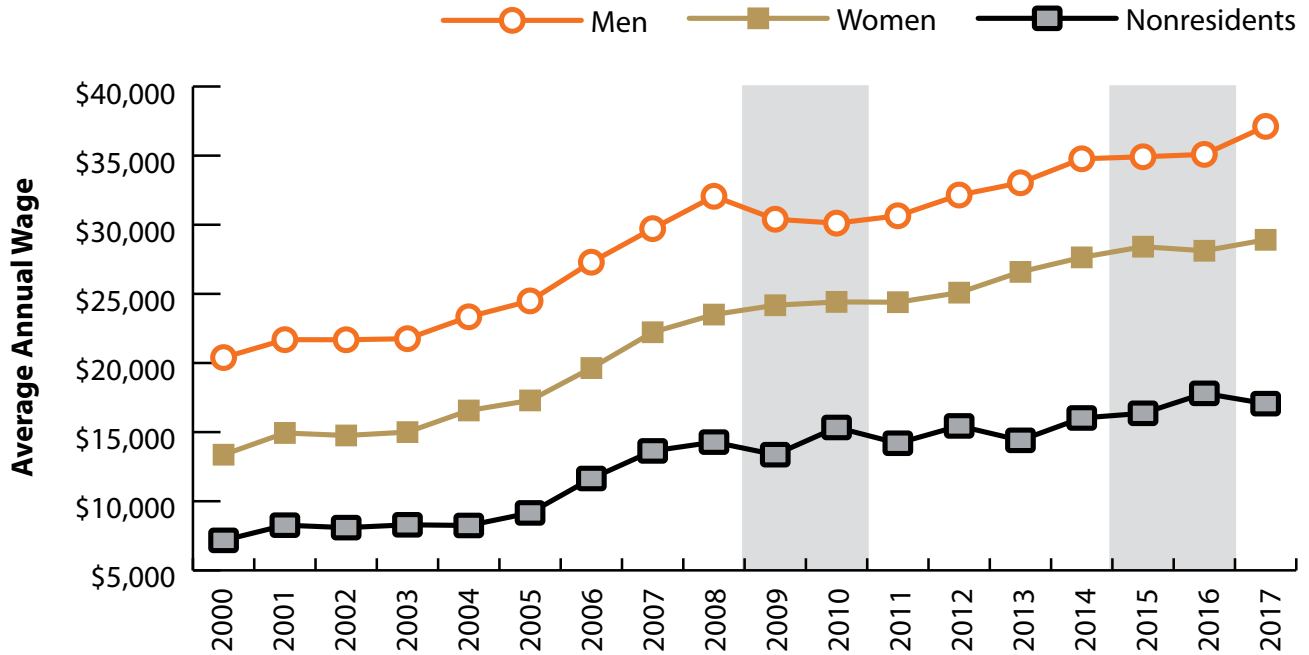


Figure: Average Annual Wage for Persons Working in Construction (NAICS 23) in Wyoming at Any Time by Age, 2000-2017

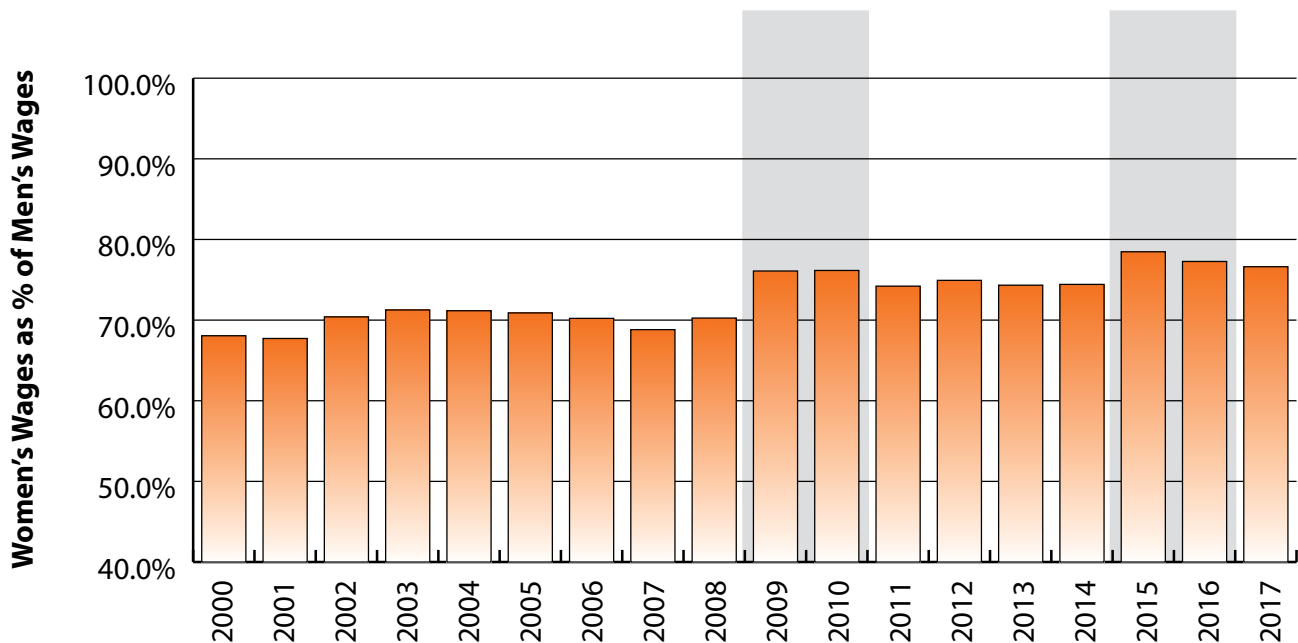


Figure: Women's Average Annual Wages as a Percent of Men's Wages for Persons Working in Construction (NAICS 23) in Wyoming at Any Time by Age, 2000-2017

Note: Nonresidents are individuals for whom demographic data are not available.

Shaded areas indicate periods of economic downturn: 2009Q1-2010Q1 and 2015Q2-2016Q4.

Source: Demographics of Persons Working in Wyoming by County, Industry, Age, & Gender, 2000-2017. Research & Planning, Wyoming Department of Workforce Services. Prepared by M. Moore, Research & Planning, WY DWS, 6/12/18.

## Average Earnings by Age and Gender in the 23 - Construction Industry in 2000

Gender	Age Group	Number	Age Percent	Gender Percent	Average Annual Wage	Average Quarters Worked	Average Annual Employers
Women	00-19	302	9.3	0.0	\$4,359	2.3	1.6
Women	20-24	330	10.2	0.0	\$8,395	2.7	1.9
Women	25-34	673	20.8	0.0	\$11,067	2.9	1.7
Women	35-44	963	29.8	0.0	\$16,295	3.2	1.7
Women	45-54	615	19.0	0.0	\$16,787	3.2	1.5
Women	55-64	259	8.0	0.0	\$17,484	3.3	1.3
Women	65-Up	84	2.6	0.0	\$13,040	2.8	1.1
Women	N/A	9	0.3	0.0	\$6,604	1.3	1.0
Women	Total	3,235	100.0	9.8	\$13,365	3.0	1.6
Men	00-19	1,822	7.9	0.0	\$5,289	2.5	1.8
Men	20-24	3,588	15.5	0.0	\$12,645	2.9	2.0
Men	25-34	5,661	24.5	0.0	\$19,474	3.1	1.7
Men	35-44	5,861	25.4	0.0	\$24,676	3.2	1.6
Men	45-54	4,087	17.7	0.0	\$27,633	3.2	1.5
Men	55-64	1,657	7.2	0.0	\$24,514	3.1	1.4
Men	65-Up	422	1.8	0.0	\$18,218	3.0	1.2
Men	N/A	20	0.1	0.0	\$14,297	1.9	1.0
Men	Total	23,118	100.0	69.8	\$20,391	3.1	1.7
N/A	N/A	6,783	100.0	0.0	\$7,169	1.6	1.2
N/A	Total	6,783	100.0	20.5	\$7,169	1.6	1.2
Total	00-19	2,124	6.4	0.0	\$5,157	2.5	1.8
Total	20-24	3,918	11.8	0.0	\$12,287	2.9	2.0
Total	25-34	6,334	19.1	0.0	\$18,581	3.1	1.7
Total	35-44	6,824	20.6	0.0	\$23,493	3.2	1.6
Total	45-54	4,702	14.2	0.0	\$26,214	3.2	1.5
Total	55-64	1,916	5.8	0.0	\$23,564	3.1	1.4
Total	65-Up	506	1.5	0.0	\$17,358	2.9	1.2
Total	N/A	6,812	20.6	0.0	\$7,189	1.6	1.2
Total	Total	33,136	100.0	100.0	\$16,998	2.7	1.6

Note: Persons worked any time during the year.

Industry Determination: Based on the industry of employment in which the person made the most money in the year.

N/A: Represents persons with demographic data that are unavailable.

N/A = Nonresidents, individuals for whom demographic data are not available.

Source: Demographics of Persons Working in Wyoming by County, Industry, Age, & Gender, 2000-2017.

Research & Planning, Wyoming Department of Workforce Services.

Prepared by M. Moore, Research & Planning, WY DWS, 6/12/18.

## Average Earnings by Age and Gender in the 23 - Construction Industry in 2001

Gender	Age Group	Number	Age Percent	Gender Percent	Average Annual Wage	Average Quarters Worked	Average Annual Employers
Women	00-19	306	9.3	0.0	\$4,849	2.4	1.6
Women	20-24	381	11.6	0.0	\$8,749	2.7	1.9
Women	25-34	622	18.9	0.0	\$12,537	2.8	1.6
Women	35-44	946	28.7	0.0	\$16,591	3.0	1.6
Women	45-54	664	20.1	0.0	\$20,295	3.1	1.4
Women	55-64	277	8.4	0.0	\$22,236	3.2	1.3
Women	65-Up	97	2.9	0.0	\$12,860	2.6	1.1
Women	N/A	4	0.1	0.0	\$12,447	1.3	1.0
Women	Total	3,297	100.0	9.2	\$14,936	2.9	1.5
Men	00-19	1,967	8.1	0.0	\$6,174	2.5	1.8
Men	20-24	3,789	15.6	0.0	\$13,643	2.9	1.9
Men	25-34	5,909	24.3	0.0	\$21,231	3.1	1.7
Men	35-44	5,851	24.1	0.0	\$25,945	3.1	1.6
Men	45-54	4,469	18.4	0.0	\$29,001	3.1	1.5
Men	55-64	1,778	7.3	0.0	\$26,348	3.1	1.4
Men	65-Up	526	2.2	0.0	\$17,558	2.8	1.2
Men	N/A	14	0.1	0.0	\$19,659	1.9	1.0
Men	Total	24,303	100.0	68.0	\$21,687	3.0	1.6
N/A	N/A	8,157	100.0	0.0	\$8,267	1.5	1.1
N/A	Total	8,157	100.0	22.8	\$8,267	1.5	1.1
Total	00-19	2,273	6.4	0.0	\$5,995	2.5	1.8
Total	20-24	4,170	11.7	0.0	\$13,195	2.9	1.9
Total	25-34	6,531	18.3	0.0	\$20,403	3.0	1.7
Total	35-44	6,797	19.0	0.0	\$24,644	3.1	1.6
Total	45-54	5,133	14.4	0.0	\$27,875	3.1	1.5
Total	55-64	2,055	5.7	0.0	\$25,794	3.1	1.4
Total	65-Up	623	1.7	0.0	\$16,827	2.8	1.2
Total	N/A	8,175	22.9	0.0	\$8,289	1.5	1.1
Total	Total	35,757	100.0	100.0	\$18,003	2.6	1.5

Note: Persons worked any time during the year.

Industry Determination: Based on the industry of employment in which the person made the most money in the year.

N/A: Represents persons with demographic data that are unavailable.

N/A = Nonresidents, individuals for whom demographic data are not available.

Source: Demographics of Persons Working in Wyoming by County, Industry, Age, & Gender, 2000-2017.

Research & Planning, Wyoming Department of Workforce Services.

Prepared by M. Moore, Research & Planning, WY DWS, 6/12/18.

## Average Earnings by Age and Gender in the 23 - Construction Industry in 2002

Gender	Age Group	Number	Age Percent	Gender Percent	Average Annual Wage	Average Quarters Worked	Average Annual Employers
Women	00-19	273	8.4	0.0	\$4,628	2.3	1.6
Women	20-24	375	11.6	0.0	\$9,314	2.9	1.9
Women	25-34	604	18.6	0.0	\$12,812	2.8	1.6
Women	35-44	905	27.9	0.0	\$16,741	3.1	1.5
Women	45-54	705	21.8	0.0	\$19,229	3.2	1.4
Women	55-64	288	8.9	0.0	\$18,842	3.2	1.3
Women	65-Up	83	2.6	0.0	\$13,865	3.0	1.1
Women	N/A	6	0.2	0.0	\$2,897	1.3	1.0
Women	Total	3,239	100.0	9.0	\$14,756	3.0	1.5
Men	00-19	1,803	7.3	0.0	\$5,537	2.5	1.7
Men	20-24	3,945	15.9	0.0	\$13,331	2.9	1.9
Men	25-34	6,141	24.8	0.0	\$20,718	3.1	1.7
Men	35-44	5,765	23.3	0.0	\$25,366	3.1	1.5
Men	45-54	4,725	19.1	0.0	\$29,713	3.1	1.4
Men	55-64	1,882	7.6	0.0	\$27,251	3.1	1.3
Men	65-Up	505	2.0	0.0	\$18,250	3.0	1.2
Men	N/A	17	0.1	0.0	\$19,935	2.1	1.2
Men	Total	24,783	100.0	69.2	\$21,679	3.0	1.6
N/A	N/A	7,781	100.0	0.0	\$8,090	1.6	1.1
N/A	Total	7,781	100.0	21.7	\$8,090	1.6	1.1
Total	00-19	2,076	5.8	0.0	\$5,418	2.5	1.7
Total	20-24	4,320	12.1	0.0	\$12,982	2.9	1.9
Total	25-34	6,745	18.8	0.0	\$20,010	3.0	1.7
Total	35-44	6,670	18.6	0.0	\$24,196	3.1	1.5
Total	45-54	5,430	15.2	0.0	\$28,352	3.1	1.4
Total	55-64	2,170	6.1	0.0	\$26,135	3.1	1.3
Total	65-Up	588	1.6	0.0	\$17,631	3.0	1.2
Total	N/A	7,804	21.8	0.0	\$8,112	1.6	1.1
Total	Total	35,803	100.0	100.0	\$18,100	2.7	1.5

Note: Persons worked any time during the year.

Industry Determination: Based on the industry of employment in which the person made the most money in the year.

N/A: Represents persons with demographic data that are unavailable.

N/A = Nonresidents, individuals for whom demographic data are not available.

Source: Demographics of Persons Working in Wyoming by County, Industry, Age, & Gender, 2000-2017.

Research & Planning, Wyoming Department of Workforce Services.

Prepared by M. Moore, Research & Planning, WY DWS, 6/12/18.

## Average Earnings by Age and Gender in the 23 - Construction Industry in 2003

Gender	Age Group	Number	Age Percent	Gender Percent	Average Annual Wage	Average Quarters Worked	Average Annual Employers
Women	00-19	245	7.8	0.0	\$4,411	2.5	1.7
Women	20-24	371	11.8	0.0	\$9,467	2.7	1.7
Women	25-34	576	18.3	0.0	\$13,042	2.8	1.6
Women	35-44	827	26.2	0.0	\$17,320	3.1	1.5
Women	45-54	734	23.3	0.0	\$19,238	3.2	1.4
Women	55-64	301	9.5	0.0	\$18,594	3.2	1.2
Women	65-Up	93	2.9	0.0	\$12,065	2.8	1.1
Women	N/A	9	0.3	0.0	\$8,311	1.9	1.1
Women	Total	3,156	100.0	8.8	\$15,001	3.0	1.5
Men	00-19	1,701	6.9	0.0	\$5,538	2.5	1.7
Men	20-24	3,867	15.7	0.0	\$13,353	2.9	1.8
Men	25-34	6,085	24.7	0.0	\$20,847	3.0	1.7
Men	35-44	5,551	22.5	0.0	\$24,804	3.0	1.5
Men	45-54	4,892	19.9	0.0	\$29,487	3.1	1.4
Men	55-64	1,963	8.0	0.0	\$28,318	3.1	1.3
Men	65-Up	553	2.2	0.0	\$18,508	2.9	1.2
Men	N/A	17	0.1	0.0	\$12,372	1.5	1.0
Men	Total	24,629	100.0	68.8	\$21,758	3.0	1.6
N/A	N/A	8,023	100.0	0.0	\$8,295	1.6	1.1
N/A	Total	8,023	100.0	22.4	\$8,295	1.6	1.1
Total	00-19	1,946	5.4	0.0	\$5,396	2.5	1.7
Total	20-24	4,238	11.8	0.0	\$13,013	2.9	1.8
Total	25-34	6,661	18.6	0.0	\$20,172	3.0	1.6
Total	35-44	6,378	17.8	0.0	\$23,834	3.0	1.5
Total	45-54	5,626	15.7	0.0	\$28,150	3.1	1.4
Total	55-64	2,264	6.3	0.0	\$27,025	3.1	1.3
Total	65-Up	646	1.8	0.0	\$17,580	2.9	1.2
Total	N/A	8,049	22.5	0.0	\$8,303	1.6	1.1
Total	Total	35,808	100.0	100.0	\$18,146	2.7	1.5

Note: Persons worked any time during the year.

Industry Determination: Based on the industry of employment in which the person made the most money in the year.

N/A: Represents persons with demographic data that are unavailable.

N/A = Nonresidents, individuals for whom demographic data are not available.

Source: Demographics of Persons Working in Wyoming by County, Industry, Age, & Gender, 2000-2017.  
Research & Planning, Wyoming Department of Workforce Services.

Prepared by M. Moore, Research & Planning, WY DWS, 6/12/18.

## Average Earnings by Age and Gender in the 23 - Construction Industry in 2004

Gender	Age Group	Number	Age Percent	Gender Percent	Average Annual Wage	Average Quarters Worked	Average Annual Employers
Women	00-19	224	7.5	0.0	\$4,678	2.4	1.5
Women	20-24	310	10.3	0.0	\$10,048	2.8	1.8
Women	25-34	574	19.1	0.0	\$13,818	2.9	1.5
Women	35-44	778	25.9	0.0	\$18,522	3.1	1.5
Women	45-54	736	24.5	0.0	\$21,536	3.3	1.3
Women	55-64	295	9.8	0.0	\$20,609	3.3	1.2
Women	65-Up	86	2.9	0.0	\$15,471	3.2	1.1
Women	N/A	2	0.1	0.0	\$7,061	2.0	1.0
Women	Total	3,005	100.0	9.1	\$16,565	3.0	1.4
Men	00-19	1,556	6.6	0.0	\$5,999	2.5	1.7
Men	20-24	3,662	15.4	0.0	\$14,517	3.0	1.9
Men	25-34	5,951	25.1	0.0	\$22,105	3.1	1.6
Men	35-44	5,088	21.4	0.0	\$26,601	3.1	1.5
Men	45-54	4,894	20.6	0.0	\$30,892	3.2	1.4
Men	55-64	2,005	8.4	0.0	\$30,556	3.2	1.3
Men	65-Up	572	2.4	0.0	\$21,000	2.9	1.1
Men	N/A	5	0.0	0.0	\$19,114	1.8	1.0
Men	Total	23,733	100.0	72.2	\$23,341	3.1	1.6
N/A	N/A	6,133	100.0	0.0	\$8,246	1.7	1.1
N/A	Total	6,133	100.0	18.7	\$8,246	1.7	1.1
Total	00-19	1,780	5.4	0.0	\$5,833	2.5	1.7
Total	20-24	3,972	12.1	0.0	\$14,169	3.0	1.8
Total	25-34	6,525	19.9	0.0	\$21,376	3.1	1.6
Total	35-44	5,866	17.8	0.0	\$25,530	3.1	1.5
Total	45-54	5,630	17.1	0.0	\$29,669	3.2	1.4
Total	55-64	2,300	7.0	0.0	\$29,280	3.2	1.3
Total	65-Up	658	2.0	0.0	\$20,278	3.0	1.1
Total	N/A	6,140	18.7	0.0	\$8,255	1.7	1.1
Total	Total	32,871	100.0	100.0	\$19,905	2.8	1.5

Note: Persons worked any time during the year.

Industry Determination: Based on the industry of employment in which the person made the most money in the year.

N/A: Represents persons with demographic data that are unavailable.

N/A = Nonresidents, individuals for whom demographic data are not available.

Source: Demographics of Persons Working in Wyoming by County, Industry, Age, & Gender, 2000-2017.  
Research & Planning, Wyoming Department of Workforce Services.

Prepared by M. Moore, Research & Planning, WY DWS, 6/12/18.



## Average Earnings by Age and Gender in the 23 - Construction Industry in 2005

Gender	Age Group	Number	Age Percent	Gender Percent	Average Annual Wage	Average Quarters Worked	Average Annual Employers
Women	00-19	236	7.0	0.0	\$5,364	2.4	1.6
Women	20-24	355	10.5	0.0	\$10,079	2.9	1.9
Women	25-34	696	20.7	0.0	\$14,764	3.0	1.6
Women	35-44	812	24.1	0.0	\$19,776	3.1	1.5
Women	45-54	811	24.1	0.0	\$21,752	3.3	1.4
Women	55-64	356	10.6	0.0	\$22,672	3.3	1.2
Women	65-Up	103	3.1	0.0	\$13,376	3.1	1.1
Women	N/A	1	0.0	0.0	\$3,398	1.0	1.0
Women	Total	3,370	100.0	9.2	\$17,291	3.1	1.5
Men	00-19	1,681	6.7	0.0	\$6,590	2.6	1.8
Men	20-24	3,909	15.5	0.0	\$15,450	3.0	1.9
Men	25-34	6,193	24.6	0.0	\$23,417	3.1	1.6
Men	35-44	5,277	21.0	0.0	\$27,730	3.1	1.5
Men	45-54	5,214	20.7	0.0	\$32,168	3.2	1.4
Men	55-64	2,267	9.0	0.0	\$31,802	3.1	1.3
Men	65-Up	625	2.5	0.0	\$21,935	3.1	1.2
Men	N/A	9	0.0	0.0	\$22,092	2.3	1.1
Men	Total	25,175	100.0	68.7	\$24,491	3.0	1.6
N/A	N/A	8,121	100.0	0.0	\$9,155	1.7	1.2
N/A	Total	8,121	100.0	22.1	\$9,155	1.7	1.2
Total	00-19	1,917	5.2	0.0	\$6,439	2.6	1.7
Total	20-24	4,264	11.6	0.0	\$15,003	3.0	1.9
Total	25-34	6,889	18.8	0.0	\$22,543	3.1	1.6
Total	35-44	6,089	16.6	0.0	\$26,670	3.1	1.5
Total	45-54	6,025	16.4	0.0	\$30,766	3.2	1.4
Total	55-64	2,623	7.2	0.0	\$30,563	3.1	1.3
Total	65-Up	728	2.0	0.0	\$20,724	3.1	1.2
Total	N/A	8,131	22.2	0.0	\$9,168	1.7	1.2
Total	Total	36,666	100.0	100.0	\$20,432	2.7	1.5

Note: Persons worked any time during the year.

Industry Determination: Based on the industry of employment in which the person made the most money in the year.

N/A: Represents persons with demographic data that are unavailable.

N/A = Nonresidents, individuals for whom demographic data are not available.

Source: Demographics of Persons Working in Wyoming by County, Industry, Age, & Gender, 2000-2017.  
Research & Planning, Wyoming Department of Workforce Services.

Prepared by M. Moore, Research & Planning, WY DWS, 6/12/18.

## Average Earnings by Age and Gender in the 23 - Construction Industry in 2006

Gender	Age Group	Number	Age Percent	Gender Percent	Average Annual Wage	Average Quarters Worked	Average Annual Employers
Women	00-19	240	6.2	0.0	\$5,966	2.5	1.7
Women	20-24	460	11.9	0.0	\$11,547	2.9	1.9
Women	25-34	802	20.8	0.0	\$17,415	3.0	1.6
Women	35-44	884	22.9	0.0	\$22,794	3.1	1.6
Women	45-54	959	24.9	0.0	\$24,336	3.2	1.5
Women	55-64	384	10.0	0.0	\$24,303	3.3	1.3
Women	65-Up	125	3.2	0.0	\$17,464	2.9	1.1
Women	N/A	4	0.1	0.0	\$9,020	1.5	1.3
Women	Total	3,858	100.0	9.0	\$19,635	3.1	1.6
Men	00-19	1,904	6.8	0.0	\$7,545	2.6	1.8
Men	20-24	4,293	15.2	0.0	\$17,600	2.9	1.8
Men	25-34	7,068	25.1	0.0	\$25,903	3.1	1.6
Men	35-44	5,773	20.5	0.0	\$29,858	3.0	1.5
Men	45-54	5,797	20.6	0.0	\$35,844	3.1	1.4
Men	55-64	2,609	9.3	0.0	\$37,424	3.2	1.3
Men	65-Up	726	2.6	0.0	\$24,801	3.0	1.2
Men	N/A	10	0.0	0.0	\$22,927	2.4	1.4
Men	Total	28,180	100.0	65.4	\$27,290	3.0	1.6
N/A	N/A	11,032	100.0	0.0	\$11,644	1.8	1.2
N/A	Total	11,032	100.0	25.6	\$11,644	1.8	1.2
Total	00-19	2,144	5.0	0.0	\$7,368	2.6	1.8
Total	20-24	4,753	11.0	0.0	\$17,015	2.9	1.8
Total	25-34	7,870	18.3	0.0	\$25,038	3.0	1.6
Total	35-44	6,657	15.5	0.0	\$28,920	3.0	1.5
Total	45-54	6,756	15.7	0.0	\$34,210	3.1	1.4
Total	55-64	2,993	6.9	0.0	\$35,741	3.2	1.3
Total	65-Up	851	2.0	0.0	\$23,723	3.0	1.2
Total	N/A	11,046	25.6	0.0	\$11,653	1.8	1.2
Total	Total	43,070	100.0	100.0	\$22,597	2.7	1.5

Note: Persons worked any time during the year.

Industry Determination: Based on the industry of employment in which the person made the most money in the year.

N/A: Represents persons with demographic data that are unavailable.

N/A = Nonresidents, individuals for whom demographic data are not available.

Source: Demographics of Persons Working in Wyoming by County, Industry, Age, & Gender, 2000-2017.

Research & Planning, Wyoming Department of Workforce Services.

Prepared by M. Moore, Research & Planning, WY DWS, 6/12/18.

## Average Earnings by Age and Gender in the 23 - Construction Industry in 2007

Gender	Age Group	Number	Age Percent	Gender Percent	Average Annual Wage	Average Quarters Worked	Average Annual Employers
Women	00-19	260	6.4	0.0	\$7,429	2.4	1.6
Women	20-24	477	11.8	0.0	\$13,245	2.8	1.8
Women	25-34	833	20.5	0.0	\$20,352	3.1	1.7
Women	35-44	895	22.1	0.0	\$24,355	3.2	1.5
Women	45-54	1,029	25.4	0.0	\$28,127	3.3	1.4
Women	55-64	426	10.5	0.0	\$26,336	3.3	1.3
Women	65-Up	132	3.3	0.0	\$22,432	3.1	1.1
Women	N/A	4	0.1	0.0	\$4,341	1.5	1.0
Women	Total	4,056	100.0	8.1	\$22,224	3.1	1.5
Men	00-19	2,012	6.4	0.0	\$8,197	2.6	1.8
Men	20-24	4,649	14.9	0.0	\$19,364	2.9	1.7
Men	25-34	8,026	25.7	0.0	\$28,349	3.0	1.6
Men	35-44	6,411	20.5	0.0	\$32,717	3.0	1.5
Men	45-54	6,378	20.4	0.0	\$37,635	3.1	1.4
Men	55-64	2,950	9.4	0.0	\$41,746	3.2	1.3
Men	65-Up	801	2.6	0.0	\$26,363	3.0	1.2
Men	N/A	17	0.1	0.0	\$23,464	2.1	1.3
Men	Total	31,244	100.0	62.4	\$29,718	3.0	1.5
N/A	N/A	14,778	100.0	0.0	\$13,640	1.8	1.1
N/A	Total	14,778	100.0	29.5	\$13,640	1.8	1.1
Total	00-19	2,272	4.5	0.0	\$8,109	2.6	1.8
Total	20-24	5,126	10.2	0.0	\$18,795	2.9	1.8
Total	25-34	8,859	17.7	0.0	\$27,597	3.0	1.6
Total	35-44	7,306	14.6	0.0	\$31,693	3.0	1.5
Total	45-54	7,407	14.8	0.0	\$36,314	3.1	1.4
Total	55-64	3,376	6.7	0.0	\$39,801	3.2	1.3
Total	65-Up	933	1.9	0.0	\$25,807	3.0	1.2
Total	N/A	14,799	29.6	0.0	\$13,648	1.8	1.1
Total	Total	50,078	100.0	100.0	\$24,366	2.6	1.4

Note: Persons worked any time during the year.

Industry Determination: Based on the industry of employment in which the person made the most money in the year.

N/A: Represents persons with demographic data that are unavailable.

N/A = Nonresidents, individuals for whom demographic data are not available.

Source: Demographics of Persons Working in Wyoming by County, Industry, Age, & Gender, 2000-2017.

Research & Planning, Wyoming Department of Workforce Services.

Prepared by M. Moore, Research & Planning, WY DWS, 6/12/18.

## Average Earnings by Age and Gender in the 23 - Construction Industry in 2008

Gender	Age Group	Number	Age Percent	Gender Percent	Average Annual Wage	Average Quarters Worked	Average Annual Employers
Women	00-19	237	5.5	0.0	\$7,218	2.4	1.5
Women	20-24	456	10.6	0.0	\$14,145	2.9	1.7
Women	25-34	909	21.1	0.0	\$21,107	3.1	1.7
Women	35-44	987	22.9	0.0	\$24,879	3.1	1.5
Women	45-54	1,090	25.3	0.0	\$30,225	3.2	1.4
Women	55-64	490	11.4	0.0	\$25,539	3.3	1.2
Women	65-Up	138	3.2	0.0	\$28,413	3.2	1.1
Women	N/A	4	0.1	0.0	\$9,073	1.5	1.0
Women	Total	4,311	100.0	8.1	\$23,502	3.1	1.5
Men	00-19	1,807	5.4	0.0	\$9,056	2.6	1.7
Men	20-24	4,836	14.5	0.0	\$20,846	2.9	1.7
Men	25-34	8,761	26.2	0.0	\$30,771	3.0	1.5
Men	35-44	7,029	21.0	0.0	\$34,513	3.0	1.4
Men	45-54	6,879	20.6	0.0	\$39,496	3.0	1.3
Men	55-64	3,268	9.8	0.0	\$44,706	3.1	1.3
Men	65-Up	873	2.6	0.0	\$28,942	3.1	1.2
Men	N/A	13	0.0	0.0	\$31,401	2.2	1.1
Men	Total	33,466	100.0	63.1	\$32,057	3.0	1.5
N/A	N/A	15,257	100.0	0.0	\$14,276	1.8	1.1
N/A	Total	15,257	100.0	28.8	\$14,276	1.8	1.1
Total	00-19	2,044	3.9	0.0	\$8,843	2.6	1.7
Total	20-24	5,292	10.0	0.0	\$20,269	2.9	1.7
Total	25-34	9,670	18.2	0.0	\$29,863	3.0	1.5
Total	35-44	8,016	15.1	0.0	\$33,327	3.0	1.4
Total	45-54	7,969	15.0	0.0	\$38,228	3.1	1.3
Total	55-64	3,758	7.1	0.0	\$42,207	3.2	1.3
Total	65-Up	1,011	1.9	0.0	\$28,870	3.1	1.2
Total	N/A	15,274	28.8	0.0	\$14,289	1.8	1.1
Total	Total	53,034	100.0	100.0	\$26,246	2.6	1.4

Note: Persons worked any time during the year.

Industry Determination: Based on the industry of employment in which the person made the most money in the year.

N/A: Represents persons with demographic data that are unavailable.

N/A = Nonresidents, individuals for whom demographic data are not available.

Source: Demographics of Persons Working in Wyoming by County, Industry, Age, & Gender, 2000-2017.

Research & Planning, Wyoming Department of Workforce Services.

Prepared by M. Moore, Research & Planning, WY DWS, 6/12/18.

## Average Earnings by Age and Gender in the 23 - Construction Industry in 2009

Gender	Age Group	Number	Age Percent	Gender Percent	Average Annual Wage	Average Quarters Worked	Average Annual Employers
Women	00-19	145	4.1	0.0	\$7,451	2.6	1.4
Women	20-24	338	9.7	0.0	\$13,948	2.9	1.5
Women	25-34	744	21.3	0.0	\$21,956	3.1	1.4
Women	35-44	744	21.3	0.0	\$24,649	3.2	1.3
Women	45-54	943	27.0	0.0	\$29,704	3.3	1.3
Women	55-64	448	12.8	0.0	\$28,591	3.4	1.2
Women	65-Up	133	3.8	0.0	\$24,555	3.1	1.1
Women	N/A	4	0.1	0.0	\$10,776	1.8	1.0
Women	Total	3,499	100.0	8.3	\$24,177	3.2	1.3
Men	00-19	1,166	3.9	0.0	\$7,703	2.5	1.5
Men	20-24	3,883	13.1	0.0	\$18,672	2.9	1.5
Men	25-34	8,066	27.2	0.0	\$28,349	3.0	1.4
Men	35-44	6,322	21.3	0.0	\$32,627	3.0	1.3
Men	45-54	6,301	21.2	0.0	\$36,906	3.1	1.3
Men	55-64	3,180	10.7	0.0	\$41,775	3.1	1.2
Men	65-Up	752	2.5	0.0	\$26,782	3.0	1.1
Men	N/A	5	0.0	0.0	\$21,390	2.2	1.0
Men	Total	29,675	100.0	70.4	\$30,398	3.0	1.3
N/A	N/A	9,003	100.0	0.0	\$13,367	1.9	1.1
N/A	Total	9,003	100.0	21.3	\$13,367	1.9	1.1
Total	00-19	1,311	3.1	0.0	\$7,675	2.5	1.5
Total	20-24	4,221	10.0	0.0	\$18,294	2.9	1.5
Total	25-34	8,810	20.9	0.0	\$27,810	3.0	1.4
Total	35-44	7,066	16.8	0.0	\$31,787	3.0	1.3
Total	45-54	7,244	17.2	0.0	\$35,968	3.1	1.3
Total	55-64	3,628	8.6	0.0	\$40,147	3.2	1.2
Total	65-Up	885	2.1	0.0	\$26,447	3.0	1.1
Total	N/A	9,012	21.4	0.0	\$13,370	1.9	1.1
Total	Total	42,177	100.0	100.0	\$26,246	2.8	1.3

Note: Persons worked any time during the year.

Industry Determination: Based on the industry of employment in which the person made the most money in the year.

N/A: Represents persons with demographic data that are unavailable.

N/A = Nonresidents, individuals for whom demographic data are not available.

Source: Demographics of Persons Working in Wyoming by County, Industry, Age, & Gender, 2000-2017.  
Research & Planning, Wyoming Department of Workforce Services.

Prepared by M. Moore, Research & Planning, WY DWS, 6/12/18.

## Average Earnings by Age and Gender in the 23 - Construction Industry in 2010

Gender	Age Group	Number	Age Percent	Gender Percent	Average Annual Wage	Average Quarters Worked	Average Annual Employers
Women	00-19	148	4.4	0.0	\$6,119	2.5	1.4
Women	20-24	301	8.9	0.0	\$14,690	2.9	1.7
Women	25-34	737	21.8	0.0	\$22,997	3.1	1.5
Women	35-44	672	19.8	0.0	\$25,048	3.1	1.4
Women	45-54	913	26.9	0.0	\$29,342	3.2	1.3
Women	55-64	491	14.5	0.0	\$28,934	3.4	1.2
Women	65-Up	124	3.7	0.0	\$21,007	3.1	1.1
Women	N/A	2	0.1	0.0	\$7,299	2.5	1.0
Women	Total	3,388	100.0	8.2	\$24,417	3.1	1.4
Men	00-19	1,053	3.7	0.0	\$7,731	2.4	1.5
Men	20-24	3,412	12.0	0.0	\$18,434	2.8	1.5
Men	25-34	7,685	27.1	0.0	\$28,269	3.0	1.4
Men	35-44	6,034	21.3	0.0	\$33,083	2.9	1.3
Men	45-54	6,018	21.2	0.0	\$35,465	3.0	1.3
Men	55-64	3,401	12.0	0.0	\$39,050	3.0	1.2
Men	65-Up	767	2.7	0.0	\$26,321	2.9	1.1
Men	N/A	7	0.0	0.0	\$36,120	2.4	1.0
Men	Total	28,377	100.0	68.5	\$30,115	2.9	1.4
N/A	N/A	9,636	100.0	0.0	\$15,335	1.8	1.1
N/A	Total	9,636	100.0	23.3	\$15,335	1.8	1.1
Total	00-19	1,201	2.9	0.0	\$7,532	2.4	1.5
Total	20-24	3,713	9.0	0.0	\$18,131	2.8	1.5
Total	25-34	8,422	20.3	0.0	\$27,808	3.0	1.4
Total	35-44	6,706	16.2	0.0	\$32,277	3.0	1.3
Total	45-54	6,931	16.7	0.0	\$34,658	3.0	1.3
Total	55-64	3,892	9.4	0.0	\$37,774	3.1	1.2
Total	65-Up	891	2.2	0.0	\$25,581	2.9	1.1
Total	N/A	9,645	23.3	0.0	\$15,348	1.8	1.1
Total	Total	41,401	100.0	100.0	\$26,209	2.7	1.3

Note: Persons worked any time during the year.

Industry Determination: Based on the industry of employment in which the person made the most money in the year.

N/A: Represents persons with demographic data that are unavailable.

N/A = Nonresidents, individuals for whom demographic data are not available.

Source: Demographics of Persons Working in Wyoming by County, Industry, Age, & Gender, 2000-2017.

Research & Planning, Wyoming Department of Workforce Services.

Prepared by M. Moore, Research & Planning, WY DWS, 6/12/18.

## Average Earnings by Age and Gender in the 23 - Construction Industry in 2011

Gender	Age Group	Number	Age Percent	Gender Percent	Average Annual Wage	Average Quarters Worked	Average Annual Employers
Women	00-19	125	3.9	0.0	\$7,025	2.5	1.5
Women	20-24	264	8.2	0.0	\$14,461	2.9	1.7
Women	25-34	697	21.6	0.0	\$22,302	3.1	1.5
Women	35-44	625	19.4	0.0	\$25,044	3.1	1.4
Women	45-54	861	26.7	0.0	\$29,272	3.2	1.4
Women	55-64	522	16.2	0.0	\$29,128	3.4	1.2
Women	65-Up	130	4.0	0.0	\$18,060	3.0	1.1
Women	N/A	1	0.0	0.0	\$32,420	4.0	1.0
Women	Total	3,225	100.0	8.4	\$24,397	3.1	1.4
Men	00-19	1,088	4.1	0.0	\$7,786	2.5	1.6
Men	20-24	3,113	11.6	0.0	\$19,026	2.8	1.6
Men	25-34	7,065	26.4	0.0	\$28,994	3.0	1.5
Men	35-44	5,650	21.1	0.0	\$33,712	3.0	1.4
Men	45-54	5,596	20.9	0.0	\$35,919	3.0	1.3
Men	55-64	3,418	12.8	0.0	\$39,220	3.1	1.3
Men	65-Up	787	2.9	0.0	\$26,403	2.9	1.2
Men	N/A	10	0.0	0.0	\$29,342	2.0	1.0
Men	Total	26,727	100.0	69.5	\$30,649	2.9	1.4
N/A	N/A	8,508	100.0	0.0	\$14,195	1.8	1.1
N/A	Total	8,508	100.0	22.1	\$14,195	1.8	1.1
Total	00-19	1,213	3.2	0.0	\$7,708	2.5	1.6
Total	20-24	3,377	8.8	0.0	\$18,669	2.8	1.6
Total	25-34	7,762	20.2	0.0	\$28,393	3.0	1.5
Total	35-44	6,275	16.3	0.0	\$32,849	3.0	1.4
Total	45-54	6,457	16.8	0.0	\$35,033	3.0	1.3
Total	55-64	3,940	10.2	0.0	\$37,883	3.1	1.3
Total	65-Up	917	2.4	0.0	\$25,220	3.0	1.1
Total	N/A	8,519	22.2	0.0	\$14,215	1.8	1.1
Total	Total	38,460	100.0	100.0	\$26,485	2.7	1.3

Note: Persons worked any time during the year.

Industry Determination: Based on the industry of employment in which the person made the most money in the year.

N/A: Represents persons with demographic data that are unavailable.

N/A = Nonresidents, individuals for whom demographic data are not available.

Source: Demographics of Persons Working in Wyoming by County, Industry, Age, & Gender, 2000-2017.  
Research & Planning, Wyoming Department of Workforce Services.

Prepared by M. Moore, Research & Planning, WY DWS, 6/12/18.

## Average Earnings by Age and Gender in the 23 - Construction Industry in 2012

Gender	Age Group	Number	Age Percent	Gender Percent	Average Annual Wage	Average Quarters Worked	Average Annual Employers
Women	00-19	123	3.6	0.0	\$6,375	2.5	1.5
Women	20-24	304	9.0	0.0	\$13,721	2.8	1.7
Women	25-34	714	21.1	0.0	\$24,084	3.1	1.5
Women	35-44	662	19.6	0.0	\$26,323	3.2	1.4
Women	45-54	829	24.5	0.0	\$30,230	3.2	1.3
Women	55-64	590	17.5	0.0	\$29,038	3.3	1.2
Women	65-Up	151	4.5	0.0	\$18,976	3.0	1.1
Women	N/A	4	0.1	0.0	\$22,342	2.5	1.5
Women	Total	3,377	100.0	8.6	\$25,089	3.1	1.4
Men	00-19	1,090	4.1	0.0	\$8,660	2.5	1.6
Men	20-24	3,203	12.1	0.0	\$19,456	2.8	1.6
Men	25-34	7,063	26.6	0.0	\$30,014	3.0	1.4
Men	35-44	5,592	21.1	0.0	\$35,893	3.0	1.4
Men	45-54	5,272	19.9	0.0	\$37,759	3.0	1.3
Men	55-64	3,460	13.0	0.0	\$41,742	3.1	1.2
Men	65-Up	839	3.2	0.0	\$29,405	3.0	1.1
Men	N/A	7	0.0	0.0	\$19,972	2.1	1.0
Men	Total	26,526	100.0	67.9	\$32,148	3.0	1.4
N/A	N/A	9,166	100.0	0.0	\$15,447	1.8	1.1
N/A	Total	9,166	100.0	23.5	\$15,447	1.8	1.1
Total	00-19	1,213	3.1	0.0	\$8,428	2.5	1.6
Total	20-24	3,507	9.0	0.0	\$18,959	2.8	1.6
Total	25-34	7,777	19.9	0.0	\$29,469	3.0	1.4
Total	35-44	6,254	16.0	0.0	\$34,880	3.0	1.4
Total	45-54	6,101	15.6	0.0	\$36,736	3.1	1.3
Total	55-64	4,050	10.4	0.0	\$39,892	3.2	1.2
Total	65-Up	990	2.5	0.0	\$27,814	3.0	1.1
Total	N/A	9,177	23.5	0.0	\$15,454	1.8	1.1
Total	Total	39,069	100.0	100.0	\$27,620	2.7	1.3

Note: Persons worked any time during the year.

Industry Determination: Based on the industry of employment in which the person made the most money in the year.

N/A: Represents persons with demographic data that are unavailable.

N/A = Nonresidents, individuals for whom demographic data are not available.

Source: Demographics of Persons Working in Wyoming by County, Industry, Age, & Gender, 2000-2017.  
Research & Planning, Wyoming Department of Workforce Services.

Prepared by M. Moore, Research & Planning, WY DWS, 6/12/18.



## Average Earnings by Age and Gender in the 23 - Construction Industry in 2013

Gender	Age Group	Number	Age Percent	Gender Percent	Average Annual Wage	Average Quarters Worked	Average Annual Employers
Women	00-19	121	3.8	0.0	\$4,984	2.3	1.5
Women	20-24	274	8.5	0.0	\$14,420	2.8	1.9
Women	25-34	702	21.8	0.0	\$24,336	3.1	1.4
Women	35-44	655	20.4	0.0	\$28,848	3.2	1.4
Women	45-54	756	23.5	0.0	\$31,876	3.2	1.3
Women	55-64	538	16.7	0.0	\$31,440	3.4	1.2
Women	65-Up	165	5.1	0.0	\$23,159	3.3	1.1
Women	N/A	3	0.1	0.0	\$29,350	3.0	1.3
Women	Total	3,214	100.0	8.2	\$26,589	3.2	1.4
Men	00-19	1,137	4.3	0.0	\$8,762	2.5	1.6
Men	20-24	3,228	12.2	0.0	\$19,603	2.9	1.6
Men	25-34	7,013	26.5	0.0	\$30,531	3.0	1.5
Men	35-44	5,633	21.3	0.0	\$37,457	3.1	1.4
Men	45-54	5,094	19.2	0.0	\$38,529	3.1	1.3
Men	55-64	3,534	13.3	0.0	\$43,910	3.2	1.2
Men	65-Up	835	3.2	0.0	\$29,813	3.0	1.1
Men	N/A	5	0.0	0.0	\$13,821	1.8	1.0
Men	Total	26,479	100.0	67.8	\$33,036	3.0	1.4
N/A	N/A	9,343	100.0	0.0	\$14,405	1.8	1.1
N/A	Total	9,343	100.0	23.9	\$14,405	1.8	1.1
Total	00-19	1,258	3.2	0.0	\$8,398	2.5	1.6
Total	20-24	3,502	9.0	0.0	\$19,197	2.9	1.7
Total	25-34	7,715	19.8	0.0	\$29,968	3.0	1.5
Total	35-44	6,288	16.1	0.0	\$36,560	3.1	1.4
Total	45-54	5,850	15.0	0.0	\$37,669	3.1	1.3
Total	55-64	4,072	10.4	0.0	\$42,262	3.2	1.2
Total	65-Up	1,000	2.6	0.0	\$28,715	3.1	1.1
Total	N/A	9,351	24.0	0.0	\$14,410	1.8	1.1
Total	Total	39,036	100.0	100.0	\$28,046	2.7	1.3

Note: Persons worked any time during the year.

Industry Determination: Based on the industry of employment in which the person made the most money in the year.

N/A: Represents persons with demographic data that are unavailable.

N/A = Nonresidents, individuals for whom demographic data are not available.

Source: Demographics of Persons Working in Wyoming by County, Industry, Age, & Gender, 2000-2017.

Research & Planning, Wyoming Department of Workforce Services.

Prepared by M. Moore, Research & Planning, WY DWS, 6/12/18.

## Average Earnings by Age and Gender in the 23 - Construction Industry in 2014

Gender	Age Group	Number	Age Percent	Gender Percent	Average Annual Wage	Average Quarters Worked	Average Annual Employers
Women	00-19	127	3.8	0.0	\$6,249	2.4	1.4
Women	20-24	281	8.5	0.0	\$16,424	2.9	1.7
Women	25-34	745	22.4	0.0	\$24,524	3.1	1.5
Women	35-44	637	19.2	0.0	\$29,196	3.3	1.4
Women	45-54	771	23.2	0.0	\$32,582	3.3	1.3
Women	55-64	595	17.9	0.0	\$33,809	3.4	1.3
Women	65-Up	162	4.9	0.0	\$25,833	3.3	1.1
Women	N/A	5	0.2	0.0	\$29,330	2.6	1.2
Women	Total	3,323	100.0	7.8	\$27,639	3.2	1.4
Men	00-19	1,171	4.2	0.0	\$9,123	2.5	1.6
Men	20-24	3,490	12.6	0.0	\$21,342	2.9	1.7
Men	25-34	7,380	26.7	0.0	\$32,773	3.0	1.5
Men	35-44	5,886	21.3	0.0	\$38,714	3.1	1.4
Men	45-54	5,059	18.3	0.0	\$40,678	3.1	1.3
Men	55-64	3,758	13.6	0.0	\$45,415	3.2	1.3
Men	65-Up	894	3.2	0.0	\$33,146	3.0	1.1
Men	N/A	4	0.0	0.0	\$28,133	2.5	1.5
Men	Total	27,642	100.0	64.9	\$34,770	3.0	1.4
N/A	N/A	11,611	100.0	0.0	\$16,023	1.9	1.1
N/A	Total	11,611	100.0	27.3	\$16,023	1.9	1.1
Total	00-19	1,298	3.0	0.0	\$8,842	2.5	1.6
Total	20-24	3,771	8.9	0.0	\$20,976	2.9	1.7
Total	25-34	8,125	19.1	0.0	\$32,016	3.0	1.5
Total	35-44	6,523	15.3	0.0	\$37,784	3.1	1.4
Total	45-54	5,830	13.7	0.0	\$39,607	3.1	1.3
Total	55-64	4,353	10.2	0.0	\$43,829	3.2	1.3
Total	65-Up	1,056	2.5	0.0	\$32,024	3.1	1.1
Total	N/A	11,620	27.3	0.0	\$16,033	1.9	1.1
Total	Total	42,576	100.0	100.0	\$29,101	2.7	1.3

Note: Persons worked any time during the year.

Industry Determination: Based on the industry of employment in which the person made the most money in the year.

N/A: Represents persons with demographic data that are unavailable.

N/A = Nonresidents, individuals for whom demographic data are not available.

Source: Demographics of Persons Working in Wyoming by County, Industry, Age, & Gender, 2000-2017.

Research & Planning, Wyoming Department of Workforce Services.

Prepared by M. Moore, Research & Planning, WY DWS, 6/12/18.

## Average Earnings by Age and Gender in the 23 - Construction Industry in 2015

Gender	Age Group	Number	Age Percent	Gender Percent	Average Annual Wage	Average Quarters Worked	Average Annual Employers
Women	00-19	128	3.9	0.0	\$5,018	2.3	1.4
Women	20-24	296	9.1	0.0	\$16,601	2.9	1.8
Women	25-34	699	21.4	0.0	\$26,299	3.2	1.5
Women	35-44	668	20.5	0.0	\$29,818	3.2	1.4
Women	45-54	734	22.5	0.0	\$33,423	3.3	1.4
Women	55-64	562	17.2	0.0	\$34,804	3.5	1.2
Women	65-Up	176	5.4	0.0	\$26,991	3.3	1.1
Women	N/A	3	0.1	0.0	\$31,042	3.3	1.0
Women	Total	3,266	100.0	8.1	\$28,412	3.2	1.4
Men	00-19	1,053	3.9	0.0	\$9,534	2.6	1.6
Men	20-24	3,333	12.4	0.0	\$20,872	2.9	1.7
Men	25-34	7,093	26.4	0.0	\$32,353	3.1	1.5
Men	35-44	5,900	22.0	0.0	\$38,623	3.1	1.4
Men	45-54	4,823	18.0	0.0	\$40,664	3.1	1.3
Men	55-64	3,771	14.1	0.0	\$45,777	3.2	1.3
Men	65-Up	859	3.2	0.0	\$36,337	3.2	1.1
Men	N/A	2	0.0	0.0	\$5,582	1.0	1.0
Men	Total	26,834	100.0	66.2	\$34,916	3.1	1.4
N/A	N/A	10,427	100.0	0.0	\$16,361	1.9	1.1
N/A	Total	10,427	100.0	25.7	\$16,361	1.9	1.1
Total	00-19	1,181	2.9	0.0	\$9,044	2.5	1.6
Total	20-24	3,629	9.0	0.0	\$20,524	2.9	1.7
Total	25-34	7,792	19.2	0.0	\$31,810	3.1	1.5
Total	35-44	6,568	16.2	0.0	\$37,727	3.1	1.4
Total	45-54	5,557	13.7	0.0	\$39,708	3.1	1.3
Total	55-64	4,333	10.7	0.0	\$44,354	3.3	1.3
Total	65-Up	1,035	2.6	0.0	\$34,747	3.2	1.1
Total	N/A	10,432	25.7	0.0	\$16,363	1.9	1.1
Total	Total	40,527	100.0	100.0	\$29,618	2.8	1.3

Note: Persons worked any time during the year.

Industry Determination: Based on the industry of employment in which the person made the most money in the year.

N/A: Represents persons with demographic data that are unavailable.

N/A = Nonresidents, individuals for whom demographic data are not available.

Source: Demographics of Persons Working in Wyoming by County, Industry, Age, & Gender, 2000-2017.

Research & Planning, Wyoming Department of Workforce Services.

Prepared by M. Moore, Research & Planning, WY DWS, 6/12/18.

## Average Earnings by Age and Gender in the 23 - Construction Industry in 2016

Gender	Age Group	Number	Age Percent	Gender Percent	Average Annual Wage	Average Quarters Worked	Average Annual Employers
Women	00-19	101	3.5	0.0	\$5,443	2.4	1.4
Women	20-24	239	8.2	0.0	\$15,473	2.9	1.6
Women	25-34	609	20.9	0.0	\$25,887	3.2	1.4
Women	35-44	618	21.2	0.0	\$30,845	3.3	1.4
Women	45-54	617	21.1	0.0	\$32,535	3.3	1.3
Women	55-64	554	19.0	0.0	\$33,456	3.5	1.2
Women	65-Up	177	6.1	0.0	\$24,350	3.2	1.1
Women	N/A	3	0.1	0.0	\$17,938	2.0	1.0
Women	Total	2,918	100.0	8.3	\$28,118	3.2	1.3
Men	00-19	902	3.7	0.0	\$8,301	2.5	1.5
Men	20-24	2,774	11.4	0.0	\$20,760	2.9	1.6
Men	25-34	6,468	26.7	0.0	\$31,837	3.1	1.5
Men	35-44	5,375	22.2	0.0	\$39,763	3.2	1.3
Men	45-54	4,325	17.8	0.0	\$41,688	3.1	1.3
Men	55-64	3,508	14.5	0.0	\$43,675	3.2	1.2
Men	65-Up	889	3.7	0.0	\$36,420	3.2	1.1
Men	N/A	1	0.0	0.0	\$31,664	4.0	2.0
Men	Total	24,242	100.0	68.8	\$35,090	3.1	1.4
N/A	N/A	8,069	100.0	0.0	\$17,804	2.0	1.1
N/A	Total	8,069	100.0	22.9	\$17,804	2.0	1.1
Total	00-19	1,003	2.8	0.0	\$8,013	2.5	1.5
Total	20-24	3,013	8.6	0.0	\$20,340	2.9	1.6
Total	25-34	7,077	20.1	0.0	\$31,325	3.1	1.5
Total	35-44	5,993	17.0	0.0	\$38,843	3.2	1.3
Total	45-54	4,942	14.0	0.0	\$40,545	3.2	1.3
Total	55-64	4,062	11.5	0.0	\$42,281	3.3	1.2
Total	65-Up	1,066	3.0	0.0	\$34,416	3.2	1.1
Total	N/A	8,073	22.9	0.0	\$17,806	2.0	1.1
Total	Total	35,229	100.0	100.0	\$30,553	2.9	1.3

Note: Persons worked any time during the year.

Industry Determination: Based on the industry of employment in which the person made the most money in the year.

N/A: Represents persons with demographic data that are unavailable.

N/A = Nonresidents, individuals for whom demographic data are not available.

Source: Demographics of Persons Working in Wyoming by County, Industry, Age, & Gender, 2000-2017.  
Research & Planning, Wyoming Department of Workforce Services.

Prepared by M. Moore, Research & Planning, WY DWS, 6/12/18.

## Average Earnings by Age and Gender in the 23 - Construction Industry in 2017

Gender	Age Group	Number	Age Percent	Gender Percent	Average Annual Wage	Average Quarters Worked	Average Annual Employers
Women	00-19	125	4.6	0.0	\$5,227	2.5	1.6
Women	20-24	195	7.2	0.0	\$15,663	3.0	1.7
Women	25-34	527	19.4	0.0	\$27,969	3.3	1.5
Women	35-44	588	21.7	0.0	\$30,809	3.3	1.4
Women	45-54	554	20.4	0.0	\$33,700	3.4	1.3
Women	55-64	542	20.0	0.0	\$34,192	3.5	1.2
Women	65-Up	181	6.7	0.0	\$25,489	3.4	1.1
Women	N/A	1	0.0	0.0	\$54,451	4.0	1.0
Women	Total	2,713	100.0	8.6	\$28,910	3.3	1.4
Men	00-19	856	4.0	0.0	\$8,381	2.5	1.6
Men	20-24	2,344	10.9	0.0	\$21,315	3.0	1.7
Men	25-34	5,420	25.2	0.0	\$33,660	3.2	1.5
Men	35-44	4,892	22.7	0.0	\$41,695	3.2	1.4
Men	45-54	3,817	17.7	0.0	\$44,805	3.2	1.3
Men	55-64	3,251	15.1	0.0	\$45,951	3.3	1.2
Men	65-Up	955	4.4	0.0	\$37,133	3.1	1.1
Men	N/A	4	0.0	0.0	\$3,116	1.0	1.0
Men	Total	21,539	100.0	68.1	\$37,115	3.2	1.4
N/A	N/A	7,398	100.0	0.0	\$17,058	2.0	1.1
N/A	Total	7,398	100.0	23.4	\$17,058	2.0	1.1
Total	00-19	981	3.1	0.0	\$7,979	2.5	1.6
Total	20-24	2,539	8.0	0.0	\$20,881	3.0	1.7
Total	25-34	5,947	18.8	0.0	\$33,156	3.2	1.5
Total	35-44	5,480	17.3	0.0	\$40,527	3.2	1.4
Total	45-54	4,371	13.8	0.0	\$43,397	3.2	1.3
Total	55-64	3,793	12.0	0.0	\$44,271	3.3	1.2
Total	65-Up	1,136	3.6	0.0	\$35,278	3.2	1.1
Total	N/A	7,403	23.4	0.0	\$17,055	2.0	1.1
Total	Total	31,650	100.0	100.0	\$31,724	2.9	1.3

Note: Persons worked any time during the year.

Industry Determination: Based on the industry of employment in which the person made the most money in the year.

N/A: Represents persons with demographic data that are unavailable.

N/A = Nonresidents, individuals for whom demographic data are not available.

Source: Demographics of Persons Working in Wyoming by County, Industry, Age, & Gender, 2000-2017.

Research & Planning, Wyoming Department of Workforce Services.

Prepared by M. Moore, Research & Planning, WY DWS, 6/12/18.