

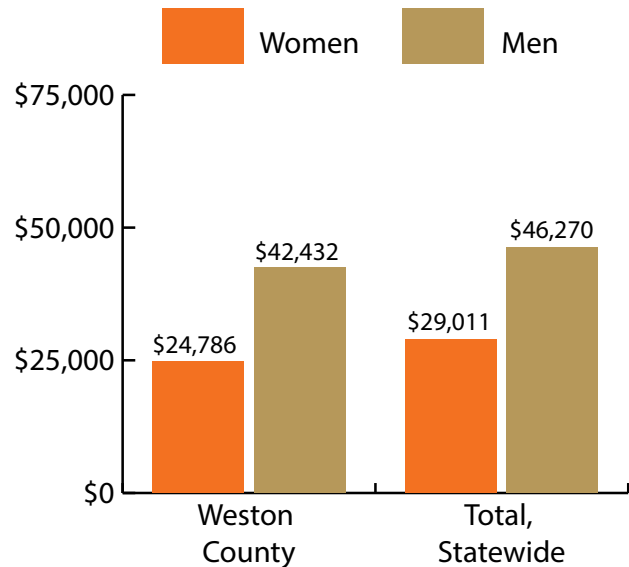
Weston County at a Glance, 2017

Demographics of Persons Working in Wyoming by County, Industry, Age, & Gender, 2000-2017

Table: Total Number of Persons Working in Weston County, WY, at Any Time by Gender and Age, 2016-2017

Gender	2016	2017	Change	
			N	%
Women	1,443	1,331	-112	-7.8
Men	1,349	1,278	-71	-5.3
Nonresidents	139	140	1	0.7
Total	2,931	2,749	-182	-6.2

Age	2016	2017	Change	
			N	%
00-19	231	205	-26	-11.3
20-24	244	218	-26	-10.7
25-34	573	504	-69	-12.0
35-44	480	456	-24	-5.0
45-54	499	463	-36	-7.2
55-64	549	541	-8	-1.5
65-Up	216	222	6	2.8
Nonresidents	139	140	1	0.7
Total	2,931	2,749	-182	-6.2



Women's Wages as % of Men's Wages

Weston County: 58.4%

Total: 62.7%

Figure: Average Annual Wages by Gender, 2017

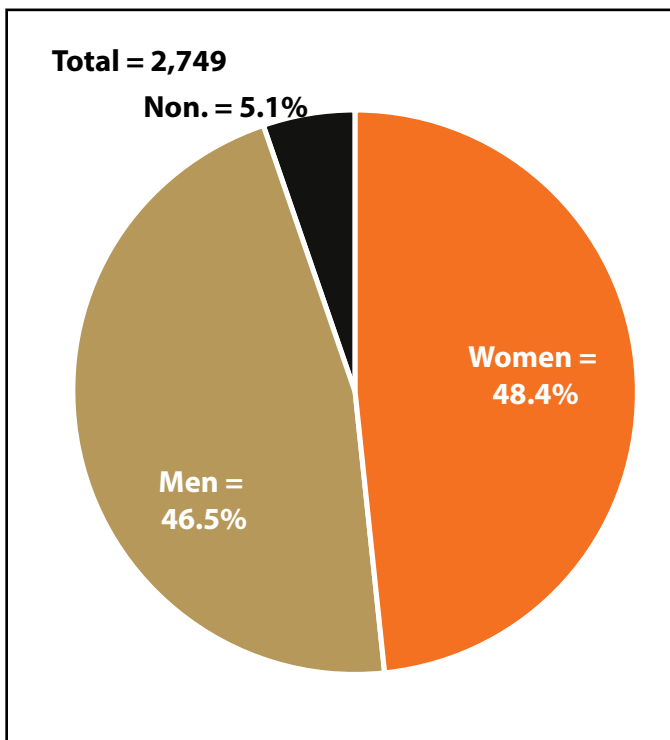


Figure: Persons Working by Gender, 2017

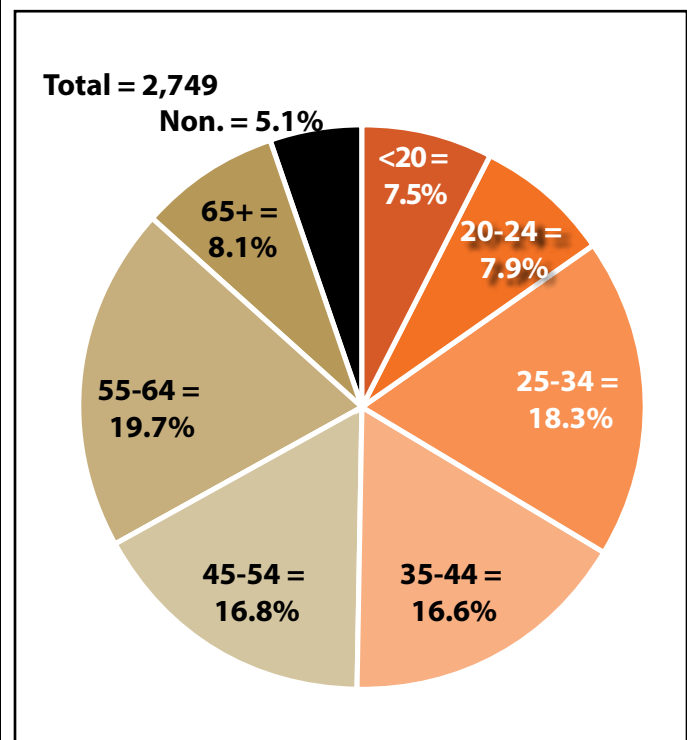


Figure: Persons Working by Age, 2017

Note: Nonresidents are individuals for whom demographic data are not available.

Source: Demographics of Persons Working in Wyoming by County, Industry, Age, & Gender, 2000-2017. Research & Planning, Wyoming Department of Workforce Services. Prepared by M. Moore, Research & Planning, WY DWS, 6/12/18.

Persons Working in Weston County by Gender and Age, 2000-2017

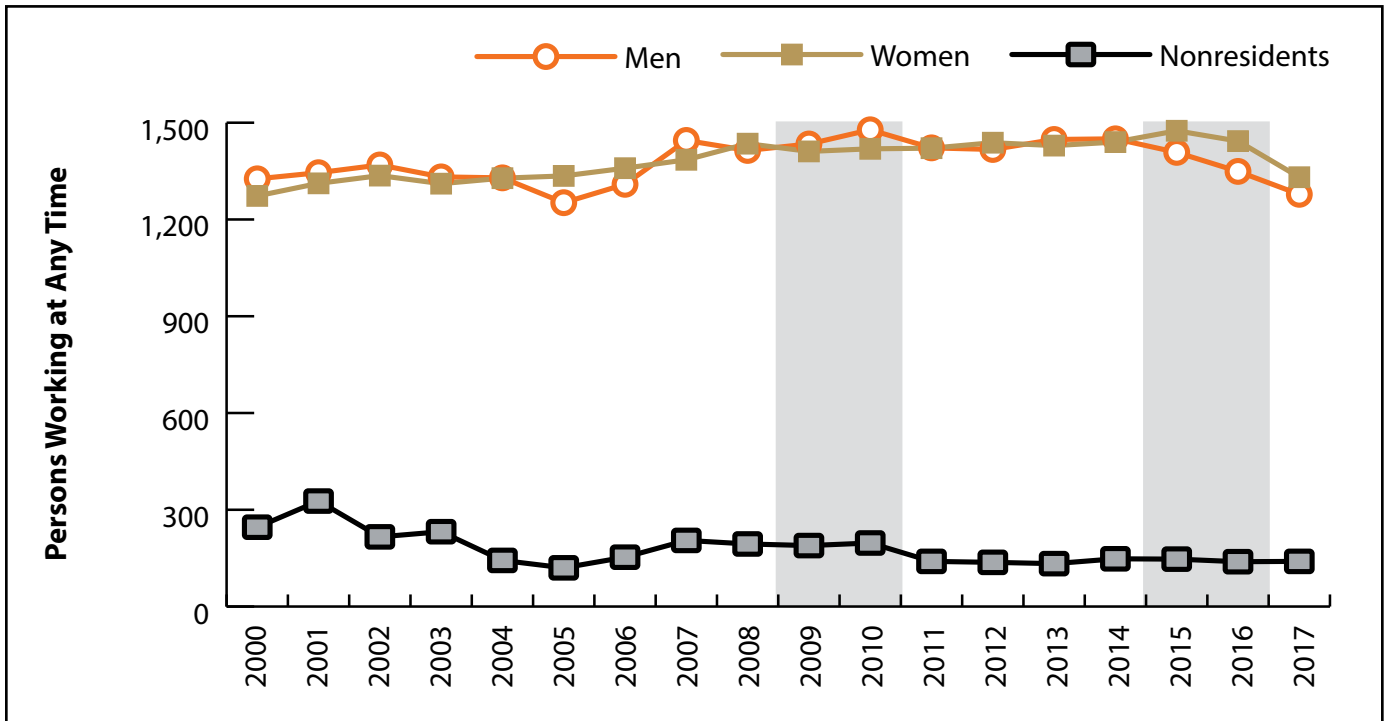


Figure: Persons Working in Weston County at Any Time by Gender, 2000-2017

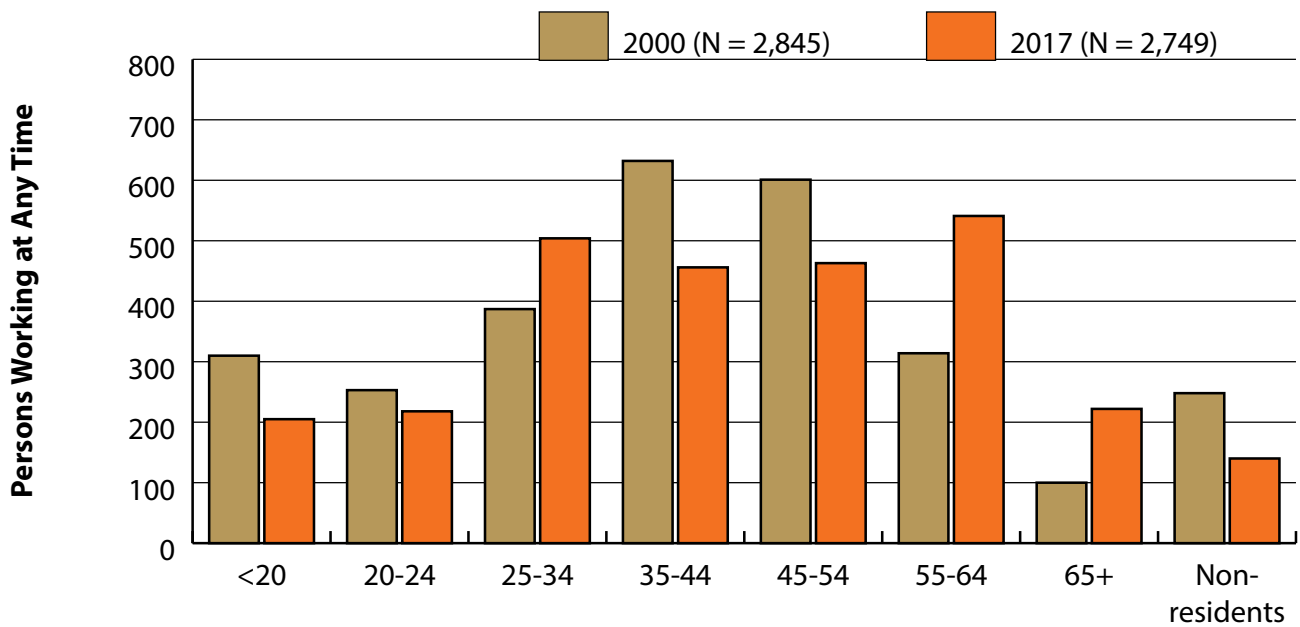


Figure: Persons Working in Weston County at Any Time by Age, 2000-2017

Note: Nonresidents are individuals for whom demographic data are not available.
 Shaded areas indicate periods of economic downturn: 2009Q1-2010Q1 and 2015Q2-2016Q4.
 Source: Demographics of Persons Working in Wyoming by County, Industry, Age, & Gender, 2000-2017. Research & Planning, Wyoming Department of Workforce Services. Prepared by M. Moore, Research & Planning, WY DWS, 6/12/18.

Wages for Persons Working in Weston County by Gender, 2000-2017

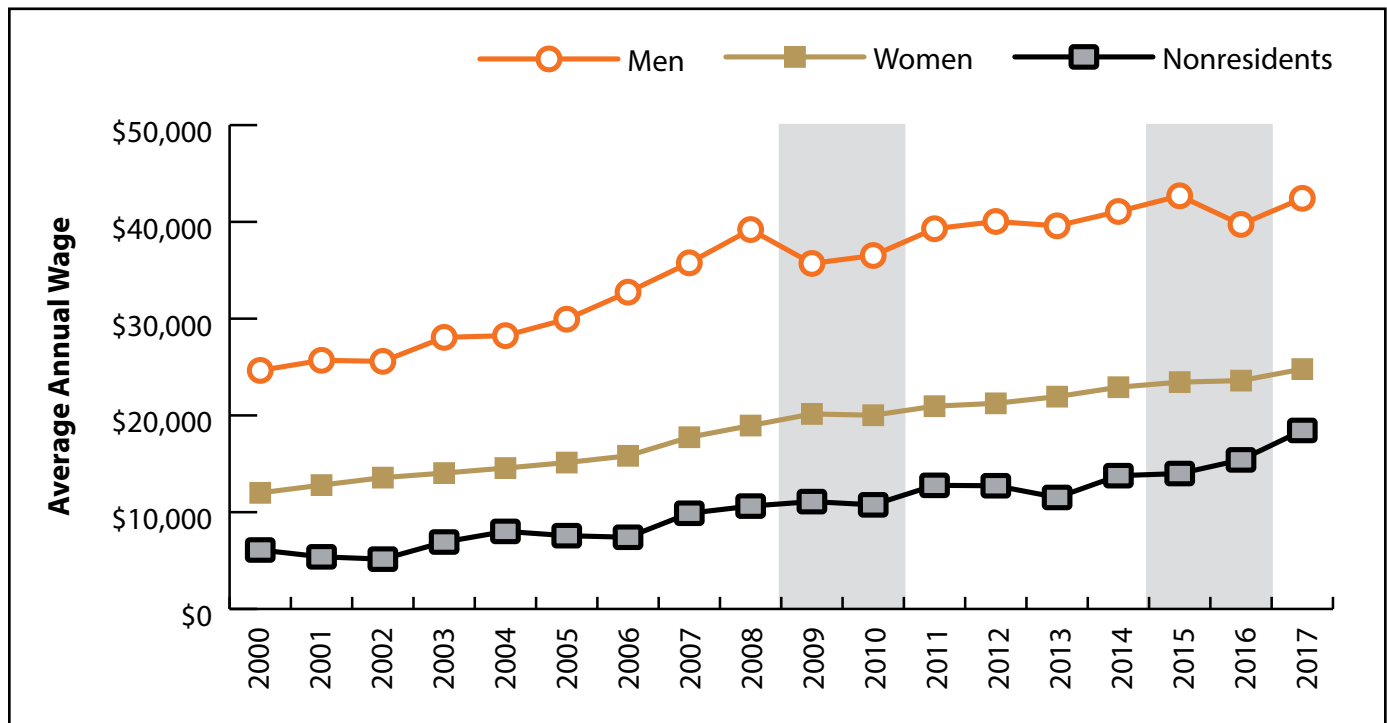


Figure: Average Annual Wage for Persons Working in Weston County at Any Time by Age, 2000-2017

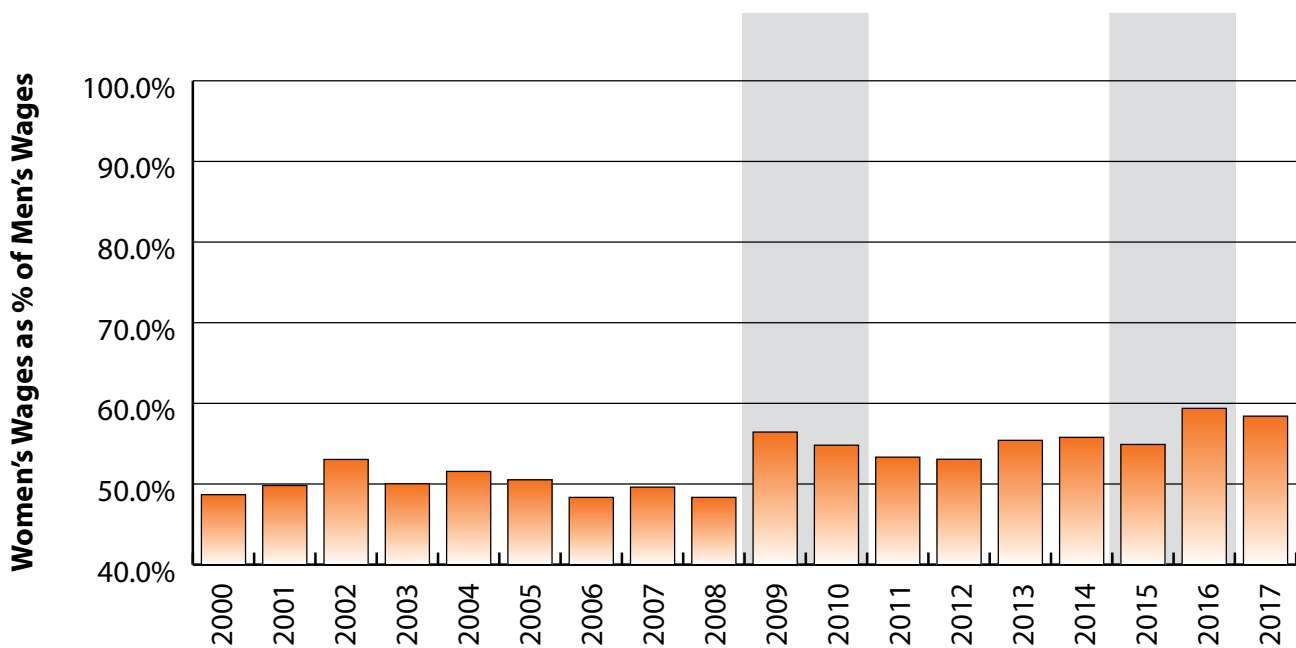


Figure: Women's Average Annual Wages as a Percent of Men's Wages for Persons Working in Weston County at Any Time by Age, 2000-2017

Note: Nonresidents are individuals for whom demographic data are not available.

Shaded areas indicate periods of economic downturn: 2009Q1-2010Q1 and 2015Q2-2016Q4.

Source: Demographics of Persons Working in Wyoming by County, Industry, Age, & Gender, 2000-2017. Research & Planning, Wyoming Department of Workforce Services. Prepared by M. Moore, Research & Planning, WY DWS, 6/12/18.

Average Earnings by Age and Gender with Place of Work in Weston County in 2000

Gender	Age Group	Number	Age Percent	Gender Percent	Average Annual Wage	Average Quarters Worked	Average Annual Employers
Women	00-19	161	12.6	0.0	\$2,372	2.7	1.4
Women	20-24	90	7.1	0.0	\$5,750	2.8	1.6
Women	25-34	198	15.6	0.0	\$10,586	3.2	1.4
Women	35-44	328	25.8	0.0	\$13,848	3.5	1.3
Women	45-54	301	23.6	0.0	\$16,441	3.5	1.3
Women	55-64	157	12.3	0.0	\$15,635	3.6	1.2
Women	65-Up	37	2.9	0.0	\$8,841	2.9	1.0
Women	N/A	1	0.1	0.0	\$4,980	1.0	1.0
Women	Total	1,273	100.0	44.7	\$11,998	3.3	1.3
Men	00-19	149	11.2	0.0	\$3,955	2.5	1.4
Men	20-24	163	12.3	0.0	\$13,434	3.0	1.8
Men	25-34	189	14.3	0.0	\$20,973	3.1	1.6
Men	35-44	304	22.9	0.0	\$32,237	3.5	1.4
Men	45-54	300	22.6	0.0	\$35,265	3.6	1.3
Men	55-64	157	11.8	0.0	\$28,750	3.6	1.2
Men	65-Up	63	4.8	0.0	\$16,135	3.4	1.0
Men	N/A	1	0.1	0.0	\$31,584	4.0	1.0
Men	Total	1,326	100.0	46.6	\$24,649	3.3	1.4
N/A	N/A	246	100.0	0.0	\$6,092	1.5	1.0
N/A	Total	246	100.0	8.6	\$6,092	1.5	1.0
Total	00-19	310	10.9	0.0	\$3,133	2.6	1.4
Total	20-24	253	8.9	0.0	\$10,700	2.9	1.8
Total	25-34	387	13.6	0.0	\$15,659	3.2	1.5
Total	35-44	632	22.2	0.0	\$22,693	3.5	1.3
Total	45-54	601	21.1	0.0	\$25,837	3.6	1.3
Total	55-64	314	11.0	0.0	\$22,193	3.6	1.2
Total	65-Up	100	3.5	0.0	\$13,436	3.2	1.0
Total	N/A	248	8.7	0.0	\$6,191	1.5	1.0
Total	Total	2,845	100.0	100.0	\$17,384	3.2	1.3

Note: Persons worked at any time during the year.

County Determination: Based on county of employment in which the person made the most money in the year.

N/A: Represents persons with demographic data that is unavailable.

N/A = Nonresidents, individuals for whom demographic data are not available.

Source: Demographics of Persons Working in Wyoming by County, Industry, Age, & Gender, 2000-2017.
Research & Planning, Wyoming Department of Workforce Services.

Prepared by M. Moore, Research & Planning, WY DWS, 6/12/18.

Average Earnings by Age and Gender with Place of Work in Weston County in 2001

Gender	Age Group	Number	Age Percent	Gender Percent	Average Annual Wage	Average Quarters Worked	Average Annual Employers
Women	00-19	154	11.7	0.0	\$2,774	2.6	1.5
Women	20-24	108	8.2	0.0	\$5,863	2.7	1.6
Women	25-34	198	15.1	0.0	\$11,517	3.2	1.5
Women	35-44	307	23.4	0.0	\$14,692	3.5	1.4
Women	45-54	323	24.6	0.0	\$17,598	3.5	1.3
Women	55-64	181	13.8	0.0	\$16,170	3.4	1.1
Women	65-Up	41	3.1	0.0	\$8,016	3.2	1.1
Women	Total	1,312	100.0	44.0	\$12,798	3.3	1.4
Men	00-19	157	11.7	0.0	\$4,137	2.5	1.4
Men	20-24	154	11.4	0.0	\$14,516	3.0	1.7
Men	25-34	181	13.5	0.0	\$23,333	3.2	1.5
Men	35-44	289	21.5	0.0	\$33,010	3.4	1.3
Men	45-54	313	23.3	0.0	\$36,592	3.5	1.3
Men	55-64	174	12.9	0.0	\$30,515	3.5	1.3
Men	65-Up	76	5.7	0.0	\$14,590	3.0	1.1
Men	N/A	1	0.1	0.0	\$36,450	4.0	1.0
Men	Total	1,345	100.0	45.1	\$25,692	3.2	1.4
N/A	N/A	327	100.0	0.0	\$5,385	1.4	1.0
N/A	Total	327	100.0	11.0	\$5,385	1.4	1.0
Total	00-19	311	10.4	0.0	\$3,462	2.5	1.5
Total	20-24	262	8.8	0.0	\$10,949	2.9	1.7
Total	25-34	379	12.7	0.0	\$17,160	3.2	1.5
Total	35-44	596	20.0	0.0	\$23,574	3.5	1.3
Total	45-54	636	21.3	0.0	\$26,946	3.5	1.3
Total	55-64	355	11.9	0.0	\$23,201	3.4	1.2
Total	65-Up	117	3.9	0.0	\$12,287	3.1	1.1
Total	N/A	328	11.0	0.0	\$5,480	1.4	1.0
Total	Total	2,984	100.0	100.0	\$17,798	3.0	1.3

Note: Persons worked at any time during the year.

County Determination: Based on county of employment in which the person made the most money in the year.

N/A: Represents persons with demographic data that is unavailable.

N/A = Nonresidents, individuals for whom demographic data are not available.

Source: Demographics of Persons Working in Wyoming by County, Industry, Age, & Gender, 2000-2017.
Research & Planning, Wyoming Department of Workforce Services.

Prepared by M. Moore, Research & Planning, WY DWS, 6/12/18.

Average Earnings by Age and Gender with Place of Work in Weston County in 2002

Gender	Age Group	Number	Age Percent	Gender Percent	Average Annual Wage	Average Quarters Worked	Average Annual Employers
Women	00-19	165	12.4	0.0	\$2,824	2.6	1.5
Women	20-24	99	7.4	0.0	\$7,023	2.9	1.7
Women	25-34	200	15.0	0.0	\$11,236	3.2	1.4
Women	35-44	313	23.4	0.0	\$15,785	3.5	1.3
Women	45-54	321	24.0	0.0	\$18,546	3.6	1.2
Women	55-64	183	13.7	0.0	\$17,977	3.5	1.1
Women	65-Up	55	4.1	0.0	\$9,813	3.3	1.1
Women	Total	1,336	100.0	45.7	\$13,572	3.3	1.3
Men	00-19	165	12.1	0.0	\$3,434	2.6	1.5
Men	20-24	149	10.9	0.0	\$14,983	2.9	1.5
Men	25-34	216	15.8	0.0	\$22,702	3.2	1.4
Men	35-44	257	18.8	0.0	\$30,519	3.5	1.4
Men	45-54	332	24.3	0.0	\$36,826	3.5	1.2
Men	55-64	178	13.0	0.0	\$34,144	3.6	1.2
Men	65-Up	71	5.2	0.0	\$16,027	3.2	1.1
Men	N/A	1	0.1	0.0	\$39,550	4.0	1.0
Men	Total	1,369	100.0	46.9	\$25,586	3.3	1.3
N/A	N/A	216	100.0	0.0	\$5,147	1.5	1.1
N/A	Total	216	100.0	7.4	\$5,147	1.5	1.1
Total	00-19	330	11.3	0.0	\$3,129	2.6	1.5
Total	20-24	248	8.5	0.0	\$11,805	2.9	1.6
Total	25-34	416	14.2	0.0	\$17,190	3.2	1.4
Total	35-44	570	19.5	0.0	\$22,428	3.5	1.4
Total	45-54	653	22.4	0.0	\$27,840	3.5	1.2
Total	55-64	361	12.4	0.0	\$25,948	3.5	1.2
Total	65-Up	126	4.3	0.0	\$13,315	3.2	1.1
Total	N/A	217	7.4	0.0	\$5,306	1.5	1.1
Total	Total	2,921	100.0	100.0	\$18,580	3.2	1.3

Note: Persons worked at any time during the year.

County Determination: Based on county of employment in which the person made the most money in the year.

N/A: Represents persons with demographic data that is unavailable.

N/A = Nonresidents, individuals for whom demographic data are not available.

Source: Demographics of Persons Working in Wyoming by County, Industry, Age, & Gender, 2000-2017.
Research & Planning, Wyoming Department of Workforce Services.

Prepared by M. Moore, Research & Planning, WY DWS, 6/12/18.

Average Earnings by Age and Gender with Place of Work in Weston County in 2003

Gender	Age Group	Number	Age Percent	Gender Percent	Average Annual Wage	Average Quarters Worked	Average Annual Employers
Women	00-19	153	11.7	0.0	\$2,378	2.5	1.3
Women	20-24	121	9.2	0.0	\$6,301	2.8	1.5
Women	25-34	181	13.8	0.0	\$11,865	3.2	1.5
Women	35-44	295	22.5	0.0	\$15,777	3.5	1.3
Women	45-54	338	25.8	0.0	\$19,673	3.7	1.3
Women	55-64	166	12.7	0.0	\$19,760	3.6	1.2
Women	65-Up	56	4.3	0.0	\$9,769	3.3	1.1
Women	N/A	1	0.1	0.0	\$2,686	1.0	1.0
Women	Total	1,311	100.0	45.6	\$14,041	3.3	1.3
Men	00-19	151	11.3	0.0	\$4,026	2.6	1.4
Men	20-24	143	10.7	0.0	\$13,743	2.9	1.5
Men	25-34	197	14.8	0.0	\$25,857	3.3	1.4
Men	35-44	256	19.2	0.0	\$35,415	3.4	1.3
Men	45-54	332	24.9	0.0	\$37,620	3.4	1.2
Men	55-64	184	13.8	0.0	\$37,581	3.6	1.1
Men	65-Up	68	5.1	0.0	\$17,673	3.3	1.0
Men	N/A	1	0.1	0.0	\$41,183	4.0	1.0
Men	Total	1,332	100.0	46.3	\$28,064	3.3	1.3
N/A	N/A	232	100.0	0.0	\$6,916	1.5	1.0
N/A	Total	232	100.0	8.1	\$6,916	1.5	1.0
Total	00-19	304	10.6	0.0	\$3,197	2.5	1.4
Total	20-24	264	9.2	0.0	\$10,332	2.8	1.5
Total	25-34	378	13.1	0.0	\$19,157	3.2	1.4
Total	35-44	551	19.2	0.0	\$24,901	3.4	1.3
Total	45-54	670	23.3	0.0	\$28,566	3.5	1.2
Total	55-64	350	12.2	0.0	\$29,129	3.6	1.2
Total	65-Up	124	4.3	0.0	\$14,103	3.3	1.1
Total	N/A	234	8.1	0.0	\$7,044	1.5	1.0
Total	Total	2,875	100.0	100.0	\$19,963	3.1	1.3

Note: Persons worked at any time during the year.

County Determination: Based on county of employment in which the person made the most money in the year.

N/A: Represents persons with demographic data that is unavailable.

N/A = Nonresidents, individuals for whom demographic data are not available.

Source: Demographics of Persons Working in Wyoming by County, Industry, Age, & Gender, 2000-2017.

Research & Planning, Wyoming Department of Workforce Services.

Prepared by M. Moore, Research & Planning, WY DWS, 6/12/18.

Average Earnings by Age and Gender with Place of Work in Weston County in 2004

Gender	Age Group	Number	Age Percent	Gender Percent	Average Annual Wage	Average Quarters Worked	Average Annual Employers
Women	00-19	166	12.5	0.0	\$2,537	2.7	1.5
Women	20-24	117	8.8	0.0	\$6,993	2.9	1.6
Women	25-34	182	13.7	0.0	\$12,634	3.3	1.4
Women	35-44	281	21.2	0.0	\$16,553	3.5	1.4
Women	45-54	347	26.1	0.0	\$20,868	3.7	1.3
Women	55-64	177	13.3	0.0	\$18,518	3.5	1.2
Women	65-Up	58	4.4	0.0	\$10,828	3.4	1.2
Women	Total	1,328	100.0	47.4	\$14,561	3.4	1.4
Men	00-19	140	10.5	0.0	\$3,826	2.6	1.4
Men	20-24	154	11.6	0.0	\$14,226	2.9	1.6
Men	25-34	218	16.4	0.0	\$26,767	3.4	1.4
Men	35-44	230	17.3	0.0	\$35,926	3.5	1.3
Men	45-54	310	23.3	0.0	\$37,374	3.5	1.2
Men	55-64	206	15.5	0.0	\$37,846	3.6	1.1
Men	65-Up	70	5.3	0.0	\$18,355	3.3	1.1
Men	N/A	1	0.1	0.0	\$42,650	4.0	1.0
Men	Total	1,329	100.0	47.5	\$28,242	3.3	1.3
N/A	N/A	143	100.0	0.0	\$8,014	1.8	1.1
N/A	Total	143	100.0	5.1	\$8,014	1.8	1.1
Total	00-19	306	10.9	0.0	\$3,127	2.7	1.5
Total	20-24	271	9.7	0.0	\$11,103	2.9	1.6
Total	25-34	400	14.3	0.0	\$20,337	3.3	1.4
Total	35-44	511	18.3	0.0	\$25,273	3.5	1.4
Total	45-54	657	23.5	0.0	\$28,656	3.6	1.2
Total	55-64	383	13.7	0.0	\$28,914	3.5	1.2
Total	65-Up	128	4.6	0.0	\$14,944	3.4	1.1
Total	N/A	144	5.1	0.0	\$8,255	1.9	1.1
Total	Total	2,800	100.0	100.0	\$20,720	3.3	1.3

Note: Persons worked at any time during the year.

County Determination: Based on county of employment in which the person made the most money in the year.

N/A: Represents persons with demographic data that is unavailable.

N/A = Nonresidents, individuals for whom demographic data are not available.

Source: Demographics of Persons Working in Wyoming by County, Industry, Age, & Gender, 2000-2017.
Research & Planning, Wyoming Department of Workforce Services.

Prepared by M. Moore, Research & Planning, WY DWS, 6/12/18.

Average Earnings by Age and Gender with Place of Work in Weston County in 2005

Gender	Age Group	Number	Age Percent	Gender Percent	Average Annual Wage	Average Quarters Worked	Average Annual Employers
Women	00-19	166	12.4	0.0	\$2,656	2.7	1.6
Women	20-24	130	9.7	0.0	\$7,696	3.1	1.7
Women	25-34	183	13.7	0.0	\$13,835	3.3	1.5
Women	35-44	264	19.8	0.0	\$16,948	3.5	1.4
Women	45-54	337	25.2	0.0	\$22,178	3.7	1.3
Women	55-64	187	14.0	0.0	\$18,978	3.5	1.2
Women	65-Up	68	5.1	0.0	\$10,632	3.3	1.1
Women	Total	1,335	100.0	49.3	\$15,126	3.4	1.4
Men	00-19	133	10.6	0.0	\$3,353	2.6	1.5
Men	20-24	142	11.3	0.0	\$15,742	2.9	1.6
Men	25-34	215	17.2	0.0	\$27,575	3.3	1.5
Men	35-44	217	17.3	0.0	\$36,289	3.4	1.2
Men	45-54	274	21.9	0.0	\$41,583	3.7	1.1
Men	55-64	205	16.4	0.0	\$41,312	3.7	1.1
Men	65-Up	64	5.1	0.0	\$16,687	3.4	1.1
Men	N/A	2	0.2	0.0	\$35,836	3.5	1.0
Men	Total	1,252	100.0	46.3	\$29,942	3.4	1.3
N/A	N/A	120	100.0	0.0	\$7,571	1.9	1.1
N/A	Total	120	100.0	4.4	\$7,571	1.9	1.1
Total	00-19	299	11.0	0.0	\$2,966	2.6	1.5
Total	20-24	272	10.0	0.0	\$11,896	3.0	1.7
Total	25-34	398	14.7	0.0	\$21,257	3.3	1.5
Total	35-44	481	17.8	0.0	\$25,673	3.5	1.3
Total	45-54	611	22.6	0.0	\$30,880	3.7	1.2
Total	55-64	392	14.5	0.0	\$30,657	3.6	1.2
Total	65-Up	132	4.9	0.0	\$13,568	3.3	1.1
Total	N/A	122	4.5	0.0	\$8,034	1.9	1.1
Total	Total	2,707	100.0	100.0	\$21,643	3.3	1.3

Note: Persons worked at any time during the year.

County Determination: Based on county of employment in which the person made the most money in the year.

N/A: Represents persons with demographic data that is unavailable.

N/A = Nonresidents, individuals for whom demographic data are not available.

Source: Demographics of Persons Working in Wyoming by County, Industry, Age, & Gender, 2000-2017.
Research & Planning, Wyoming Department of Workforce Services.

Prepared by M. Moore, Research & Planning, WY DWS, 6/12/18.

Average Earnings by Age and Gender with Place of Work in Weston County in 2006

Gender	Age Group	Number	Age Percent	Gender Percent	Average Annual Wage	Average Quarters Worked	Average Annual Employers
Women	00-19	160	11.8	0.0	\$2,819	2.7	1.6
Women	20-24	123	9.1	0.0	\$8,700	2.8	1.6
Women	25-34	201	14.8	0.0	\$13,805	3.1	1.4
Women	35-44	259	19.1	0.0	\$16,826	3.4	1.4
Women	45-54	348	25.6	0.0	\$23,032	3.6	1.3
Women	55-64	196	14.4	0.0	\$20,473	3.6	1.2
Women	65-Up	72	5.3	0.0	\$11,455	3.2	1.1
Women	Total	1,359	100.0	48.2	\$15,825	3.3	1.4
Men	00-19	149	11.4	0.0	\$4,937	2.8	1.6
Men	20-24	123	9.4	0.0	\$19,096	3.1	1.7
Men	25-34	216	16.5	0.0	\$29,277	3.4	1.5
Men	35-44	216	16.5	0.0	\$39,887	3.3	1.4
Men	45-54	311	23.8	0.0	\$43,866	3.6	1.2
Men	55-64	217	16.6	0.0	\$44,825	3.6	1.2
Men	65-Up	76	5.8	0.0	\$18,699	3.3	1.3
Men	N/A	1	0.1	0.0	\$38,795	4.0	1.0
Men	Total	1,309	100.0	46.4	\$32,737	3.4	1.4
N/A	N/A	153	100.0	0.0	\$7,408	2.0	1.2
N/A	Total	153	100.0	5.4	\$7,408	2.0	1.2
Total	00-19	309	11.0	0.0	\$3,840	2.7	1.6
Total	20-24	246	8.7	0.0	\$13,898	3.0	1.6
Total	25-34	417	14.8	0.0	\$21,820	3.3	1.5
Total	35-44	475	16.8	0.0	\$27,313	3.4	1.4
Total	45-54	659	23.4	0.0	\$32,864	3.6	1.3
Total	55-64	413	14.6	0.0	\$33,268	3.6	1.2
Total	65-Up	148	5.2	0.0	\$15,175	3.3	1.2
Total	N/A	154	5.5	0.0	\$7,612	2.0	1.2
Total	Total	2,821	100.0	100.0	\$23,216	3.3	1.4

Note: Persons worked at any time during the year.

County Determination: Based on county of employment in which the person made the most money in the year.

N/A: Represents persons with demographic data that is unavailable.

N/A = Nonresidents, individuals for whom demographic data are not available.

Source: Demographics of Persons Working in Wyoming by County, Industry, Age, & Gender, 2000-2017.
Research & Planning, Wyoming Department of Workforce Services.

Prepared by M. Moore, Research & Planning, WY DWS, 6/12/18.

Average Earnings by Age and Gender with Place of Work in Weston County in 2007

Gender	Age Group	Number	Age Percent	Gender Percent	Average Annual Wage	Average Quarters Worked	Average Annual Employers
Women	00-19	155	11.2	0.0	\$3,322	2.6	1.5
Women	20-24	124	9.0	0.0	\$9,249	3.1	1.8
Women	25-34	229	16.5	0.0	\$15,403	3.0	1.4
Women	35-44	244	17.6	0.0	\$20,314	3.5	1.4
Women	45-54	348	25.1	0.0	\$25,102	3.6	1.3
Women	55-64	205	14.8	0.0	\$22,918	3.6	1.2
Women	65-Up	80	5.8	0.0	\$12,465	3.3	1.2
Women	Total	1,385	100.0	45.6	\$17,745	3.3	1.4
Men	00-19	146	10.1	0.0	\$5,343	2.8	1.5
Men	20-24	148	10.2	0.0	\$20,552	3.1	1.5
Men	25-34	260	18.0	0.0	\$30,531	3.3	1.4
Men	35-44	219	15.2	0.0	\$47,011	3.5	1.3
Men	45-54	331	22.9	0.0	\$47,475	3.6	1.3
Men	55-64	245	17.0	0.0	\$48,535	3.5	1.2
Men	65-Up	95	6.6	0.0	\$20,785	3.3	1.2
Men	N/A	1	0.1	0.0	\$48,757	4.0	1.0
Men	Total	1,445	100.0	47.6	\$35,767	3.4	1.3
N/A	N/A	205	100.0	0.0	\$9,889	1.9	1.1
N/A	Total	205	100.0	6.8	\$9,889	1.9	1.1
Total	00-19	301	9.9	0.0	\$4,302	2.7	1.5
Total	20-24	272	9.0	0.0	\$15,399	3.1	1.6
Total	25-34	489	16.1	0.0	\$23,446	3.1	1.4
Total	35-44	463	15.3	0.0	\$32,942	3.5	1.4
Total	45-54	679	22.4	0.0	\$36,008	3.6	1.3
Total	55-64	450	14.8	0.0	\$36,865	3.6	1.2
Total	65-Up	175	5.8	0.0	\$16,981	3.3	1.2
Total	N/A	206	6.8	0.0	\$10,078	1.9	1.1
Total	Total	3,035	100.0	100.0	\$25,795	3.2	1.3

Note: Persons worked at any time during the year.

County Determination: Based on county of employment in which the person made the most money in the year.

N/A: Represents persons with demographic data that is unavailable.

N/A = Nonresidents, individuals for whom demographic data are not available.

Source: Demographics of Persons Working in Wyoming by County, Industry, Age, & Gender, 2000-2017.
Research & Planning, Wyoming Department of Workforce Services.

Prepared by M. Moore, Research & Planning, WY DWS, 6/12/18.

Average Earnings by Age and Gender with Place of Work in Weston County in 2008

Gender	Age Group	Number	Age Percent	Gender Percent	Average Annual Wage	Average Quarters Worked	Average Annual Employers
Women	00-19	149	10.4	0.0	\$3,305	2.6	1.4
Women	20-24	145	10.1	0.0	\$10,757	3.1	1.8
Women	25-34	254	17.7	0.0	\$17,917	3.2	1.5
Women	35-44	256	17.8	0.0	\$21,626	3.4	1.4
Women	45-54	338	23.6	0.0	\$25,520	3.6	1.3
Women	55-64	215	15.0	0.0	\$24,592	3.6	1.2
Women	65-Up	78	5.4	0.0	\$14,685	3.5	1.1
Women	Total	1,435	100.0	47.2	\$18,953	3.3	1.4
Men	00-19	123	8.7	0.0	\$6,267	2.9	1.5
Men	20-24	150	10.6	0.0	\$24,070	3.1	1.5
Men	25-34	279	19.7	0.0	\$35,874	3.3	1.4
Men	35-44	212	15.0	0.0	\$46,739	3.4	1.3
Men	45-54	323	22.8	0.0	\$49,062	3.6	1.2
Men	55-64	241	17.0	0.0	\$53,024	3.6	1.1
Men	65-Up	85	6.0	0.0	\$28,972	3.4	1.1
Men	N/A	1	0.1	0.0	\$49,905	4.0	1.0
Men	Total	1,414	100.0	46.5	\$39,206	3.4	1.3
N/A	N/A	194	100.0	0.0	\$10,629	1.9	1.1
N/A	Total	194	100.0	6.4	\$10,629	1.9	1.1
Total	00-19	272	8.9	0.0	\$4,645	2.7	1.5
Total	20-24	295	9.7	0.0	\$17,526	3.1	1.7
Total	25-34	533	17.5	0.0	\$27,316	3.3	1.4
Total	35-44	468	15.4	0.0	\$33,002	3.4	1.3
Total	45-54	661	21.7	0.0	\$37,023	3.6	1.3
Total	55-64	456	15.0	0.0	\$39,618	3.6	1.2
Total	65-Up	163	5.4	0.0	\$22,135	3.5	1.1
Total	N/A	195	6.4	0.0	\$10,831	2.0	1.1
Total	Total	3,043	100.0	100.0	\$27,833	3.3	1.3

Note: Persons worked at any time during the year.

County Determination: Based on county of employment in which the person made the most money in the year.

N/A: Represents persons with demographic data that is unavailable.

N/A = Nonresidents, individuals for whom demographic data are not available.

Source: Demographics of Persons Working in Wyoming by County, Industry, Age, & Gender, 2000-2017.
Research & Planning, Wyoming Department of Workforce Services.

Prepared by M. Moore, Research & Planning, WY DWS, 6/12/18.

Average Earnings by Age and Gender with Place of Work in Weston County in 2009

Gender	Age Group	Number	Age Percent	Gender Percent	Average Annual Wage	Average Quarters Worked	Average Annual Employers
Women	00-19	122	8.6	0.0	\$3,391	2.8	1.3
Women	20-24	129	9.1	0.0	\$8,990	3.0	1.6
Women	25-34	275	19.5	0.0	\$17,511	3.3	1.3
Women	35-44	235	16.7	0.0	\$23,524	3.6	1.3
Women	45-54	326	23.1	0.0	\$27,301	3.6	1.3
Women	55-64	243	17.2	0.0	\$26,303	3.7	1.2
Women	65-Up	81	5.7	0.0	\$15,112	3.4	1.1
Women	Total	1,411	100.0	46.5	\$20,151	3.4	1.3
Men	00-19	106	7.4	0.0	\$3,990	2.7	1.3
Men	20-24	150	10.5	0.0	\$21,282	3.0	1.3
Men	25-34	284	19.8	0.0	\$33,745	3.3	1.2
Men	35-44	207	14.4	0.0	\$40,556	3.3	1.2
Men	45-54	330	23.0	0.0	\$44,113	3.4	1.1
Men	55-64	260	18.1	0.0	\$47,395	3.5	1.1
Men	65-Up	96	6.7	0.0	\$27,842	3.4	1.1
Men	N/A	1	0.1	0.0	\$52,004	4.0	1.0
Men	Total	1,434	100.0	47.3	\$35,704	3.3	1.2
N/A	N/A	189	100.0	0.0	\$11,092	2.0	1.1
N/A	Total	189	100.0	6.2	\$11,092	2.0	1.1
Total	00-19	228	7.5	0.0	\$3,669	2.7	1.3
Total	20-24	279	9.2	0.0	\$15,599	3.0	1.5
Total	25-34	559	18.4	0.0	\$25,759	3.3	1.3
Total	35-44	442	14.6	0.0	\$31,501	3.5	1.3
Total	45-54	656	21.6	0.0	\$35,758	3.5	1.2
Total	55-64	503	16.6	0.0	\$37,205	3.6	1.2
Total	65-Up	177	5.8	0.0	\$22,017	3.4	1.1
Total	N/A	190	6.3	0.0	\$11,308	2.0	1.1
Total	Total	3,034	100.0	100.0	\$26,937	3.3	1.2

Note: Persons worked at any time during the year.

County Determination: Based on county of employment in which the person made the most money in the year.

N/A: Represents persons with demographic data that is unavailable.

N/A = Nonresidents, individuals for whom demographic data are not available.

Source: Demographics of Persons Working in Wyoming by County, Industry, Age, & Gender, 2000-2017.
Research & Planning, Wyoming Department of Workforce Services.

Prepared by M. Moore, Research & Planning, WY DWS, 6/12/18.

Average Earnings by Age and Gender with Place of Work in Weston County in 2010

Gender	Age Group	Number	Age Percent	Gender Percent	Average Annual Wage	Average Quarters Worked	Average Annual Employers
Women	00-19	129	9.1	0.0	\$3,260	2.6	1.3
Women	20-24	117	8.2	0.0	\$10,226	3.1	1.6
Women	25-34	274	19.3	0.0	\$17,344	3.2	1.3
Women	35-44	244	17.2	0.0	\$23,207	3.5	1.4
Women	45-54	314	22.1	0.0	\$26,279	3.5	1.3
Women	55-64	259	18.3	0.0	\$26,985	3.7	1.2
Women	65-Up	82	5.8	0.0	\$13,844	3.2	1.1
Women	Total	1,419	100.0	45.9	\$20,019	3.4	1.3
Men	00-19	109	7.4	0.0	\$4,542	2.6	1.3
Men	20-24	159	10.8	0.0	\$19,798	3.0	1.3
Men	25-34	318	21.5	0.0	\$34,165	3.2	1.2
Men	35-44	197	13.3	0.0	\$43,422	3.4	1.2
Men	45-54	330	22.3	0.0	\$46,847	3.4	1.2
Men	55-64	264	17.9	0.0	\$48,264	3.5	1.1
Men	65-Up	100	6.8	0.0	\$26,673	3.2	1.1
Men	N/A	1	0.1	0.0	\$52,713	4.0	1.0
Men	Total	1,478	100.0	47.8	\$36,524	3.3	1.2
N/A	N/A	197	100.0	0.0	\$10,759	1.9	1.1
N/A	Total	197	100.0	6.4	\$10,759	1.9	1.1
Total	00-19	238	7.7	0.0	\$3,847	2.6	1.3
Total	20-24	276	8.9	0.0	\$15,740	3.0	1.4
Total	25-34	592	19.1	0.0	\$26,379	3.2	1.3
Total	35-44	441	14.3	0.0	\$32,237	3.4	1.3
Total	45-54	644	20.8	0.0	\$36,819	3.5	1.2
Total	55-64	523	16.9	0.0	\$37,726	3.6	1.2
Total	65-Up	182	5.9	0.0	\$20,893	3.2	1.1
Total	N/A	198	6.4	0.0	\$10,971	1.9	1.1
Total	Total	3,094	100.0	100.0	\$27,314	3.2	1.2

Note: Persons worked at any time during the year.

County Determination: Based on county of employment in which the person made the most money in the year.

N/A: Represents persons with demographic data that is unavailable.

N/A = Nonresidents, individuals for whom demographic data are not available.

Source: Demographics of Persons Working in Wyoming by County, Industry, Age, & Gender, 2000-2017.
Research & Planning, Wyoming Department of Workforce Services.

Prepared by M. Moore, Research & Planning, WY DWS, 6/12/18.

Average Earnings by Age and Gender with Place of Work in Weston County in 2011

Gender	Age Group	Number	Age Percent	Gender Percent	Average Annual Wage	Average Quarters Worked	Average Annual Employers
Women	00-19	126	8.9	0.0	\$4,071	2.8	1.5
Women	20-24	128	9.0	0.0	\$9,893	3.0	1.6
Women	25-34	273	19.2	0.0	\$18,226	3.3	1.3
Women	35-44	251	17.7	0.0	\$23,724	3.5	1.4
Women	45-54	300	21.1	0.0	\$28,025	3.6	1.3
Women	55-64	265	18.6	0.0	\$27,979	3.6	1.2
Women	65-Up	78	5.5	0.0	\$15,925	3.5	1.1
Women	Total	1,421	100.0	47.6	\$20,953	3.4	1.3
Men	00-19	102	7.2	0.0	\$4,636	2.7	1.4
Men	20-24	166	11.7	0.0	\$19,538	3.0	1.5
Men	25-34	322	22.6	0.0	\$35,206	3.3	1.2
Men	35-44	202	14.2	0.0	\$45,305	3.3	1.3
Men	45-54	273	19.2	0.0	\$52,861	3.6	1.2
Men	55-64	251	17.7	0.0	\$57,194	3.5	1.1
Men	65-Up	105	7.4	0.0	\$26,913	3.4	1.1
Men	N/A	1	0.1	0.0	\$54,588	4.0	1.0
Men	Total	1,422	100.0	47.7	\$39,291	3.3	1.2
N/A	N/A	140	100.0	0.0	\$12,773	2.1	1.1
N/A	Total	140	100.0	4.7	\$12,773	2.1	1.1
Total	00-19	228	7.6	0.0	\$4,324	2.8	1.4
Total	20-24	294	9.9	0.0	\$15,339	3.0	1.5
Total	25-34	595	19.9	0.0	\$27,415	3.3	1.3
Total	35-44	453	15.2	0.0	\$33,347	3.4	1.3
Total	45-54	573	19.2	0.0	\$39,858	3.6	1.3
Total	55-64	516	17.3	0.0	\$42,190	3.6	1.2
Total	65-Up	183	6.1	0.0	\$22,230	3.5	1.1
Total	N/A	141	4.7	0.0	\$13,070	2.1	1.1
Total	Total	2,983	100.0	100.0	\$29,310	3.3	1.3

Note: Persons worked at any time during the year.

County Determination: Based on county of employment in which the person made the most money in the year.

N/A: Represents persons with demographic data that is unavailable.

N/A = Nonresidents, individuals for whom demographic data are not available.

Source: Demographics of Persons Working in Wyoming by County, Industry, Age, & Gender, 2000-2017.
Research & Planning, Wyoming Department of Workforce Services.

Prepared by M. Moore, Research & Planning, WY DWS, 6/12/18.

Average Earnings by Age and Gender with Place of Work in Weston County in 2012

Gender	Age Group	Number	Age Percent	Gender Percent	Average Annual Wage	Average Quarters Worked	Average Annual Employers
Women	00-19	121	8.4	0.0	\$3,565	2.7	1.5
Women	20-24	145	10.1	0.0	\$10,772	3.0	1.5
Women	25-34	283	19.7	0.0	\$17,476	3.2	1.3
Women	35-44	259	18.0	0.0	\$24,279	3.4	1.3
Women	45-54	289	20.1	0.0	\$29,602	3.7	1.3
Women	55-64	252	17.5	0.0	\$28,562	3.6	1.2
Women	65-Up	89	6.2	0.0	\$17,686	3.5	1.1
Women	Total	1,438	100.0	48.1	\$21,248	3.4	1.3
Men	00-19	111	7.8	0.0	\$6,125	2.7	1.5
Men	20-24	149	10.5	0.0	\$19,775	2.9	1.4
Men	25-34	329	23.2	0.0	\$37,135	3.4	1.3
Men	35-44	208	14.7	0.0	\$47,566	3.4	1.2
Men	45-54	261	18.4	0.0	\$55,605	3.6	1.2
Men	55-64	261	18.4	0.0	\$53,057	3.6	1.1
Men	65-Up	97	6.8	0.0	\$26,634	3.3	1.1
Men	N/A	1	0.1	0.0	\$55,567	4.0	1.0
Men	Total	1,417	100.0	47.4	\$40,040	3.4	1.2
N/A	N/A	137	100.0	0.0	\$12,731	2.1	1.1
N/A	Total	137	100.0	4.6	\$12,731	2.1	1.1
Total	00-19	232	7.8	0.0	\$4,790	2.7	1.5
Total	20-24	294	9.8	0.0	\$15,335	3.0	1.5
Total	25-34	612	20.5	0.0	\$28,044	3.3	1.3
Total	35-44	467	15.6	0.0	\$34,651	3.4	1.3
Total	45-54	550	18.4	0.0	\$41,941	3.7	1.3
Total	55-64	513	17.1	0.0	\$41,024	3.6	1.2
Total	65-Up	186	6.2	0.0	\$22,353	3.4	1.1
Total	N/A	138	4.6	0.0	\$13,042	2.2	1.1
Total	Total	2,992	100.0	100.0	\$29,758	3.3	1.3

Note: Persons worked at any time during the year.

County Determination: Based on county of employment in which the person made the most money in the year.

N/A: Represents persons with demographic data that is unavailable.

N/A = Nonresidents, individuals for whom demographic data are not available.

Source: Demographics of Persons Working in Wyoming by County, Industry, Age, & Gender, 2000-2017.
Research & Planning, Wyoming Department of Workforce Services.

Prepared by M. Moore, Research & Planning, WY DWS, 6/12/18.

Average Earnings by Age and Gender with Place of Work in Weston County in 2013

Gender	Age Group	Number	Age Percent	Gender Percent	Average Annual Wage	Average Quarters Worked	Average Annual Employers
Women	00-19	108	7.6	0.0	\$3,668	2.6	1.4
Women	20-24	141	9.9	0.0	\$10,755	3.1	1.6
Women	25-34	279	19.5	0.0	\$18,491	3.3	1.3
Women	35-44	245	17.1	0.0	\$24,748	3.5	1.3
Women	45-54	286	20.0	0.0	\$28,076	3.6	1.3
Women	55-64	280	19.6	0.0	\$30,545	3.7	1.2
Women	65-Up	89	6.2	0.0	\$18,352	3.5	1.1
Women	N/A	1	0.1	0.0	\$2,180	3.0	1.0
Women	Total	1,429	100.0	47.5	\$21,940	3.4	1.3
Men	00-19	119	8.2	0.0	\$5,835	2.7	1.3
Men	20-24	132	9.1	0.0	\$20,983	3.0	1.6
Men	25-34	311	21.5	0.0	\$38,037	3.5	1.3
Men	35-44	240	16.6	0.0	\$48,146	3.4	1.4
Men	45-54	273	18.9	0.0	\$51,311	3.5	1.2
Men	55-64	273	18.9	0.0	\$50,651	3.5	1.2
Men	65-Up	98	6.8	0.0	\$26,424	3.3	1.1
Men	N/A	2	0.1	0.0	\$28,046	2.5	1.0
Men	Total	1,448	100.0	48.1	\$39,592	3.3	1.3
N/A	N/A	133	100.0	0.0	\$11,521	2.0	1.1
N/A	Total	133	100.0	4.4	\$11,521	2.0	1.1
Total	00-19	227	7.5	0.0	\$4,804	2.7	1.4
Total	20-24	273	9.1	0.0	\$15,701	3.1	1.6
Total	25-34	590	19.6	0.0	\$28,794	3.4	1.3
Total	35-44	485	16.1	0.0	\$36,326	3.4	1.3
Total	45-54	559	18.6	0.0	\$39,424	3.5	1.3
Total	55-64	553	18.4	0.0	\$40,470	3.6	1.2
Total	65-Up	187	6.2	0.0	\$22,582	3.4	1.1
Total	N/A	136	4.5	0.0	\$11,695	2.0	1.1
Total	Total	3,010	100.0	100.0	\$29,972	3.3	1.3

Note: Persons worked at any time during the year.

County Determination: Based on county of employment in which the person made the most money in the year.

N/A: Represents persons with demographic data that is unavailable.

N/A = Nonresidents, individuals for whom demographic data are not available.

Source: Demographics of Persons Working in Wyoming by County, Industry, Age, & Gender, 2000-2017.
Research & Planning, Wyoming Department of Workforce Services.

Prepared by M. Moore, Research & Planning, WY DWS, 6/12/18.

Average Earnings by Age and Gender with Place of Work in Weston County in 2014

Gender	Age Group	Number	Age Percent	Gender Percent	Average Annual Wage	Average Quarters Worked	Average Annual Employers
Women	00-19	114	7.9	0.0	\$4,324	2.6	1.5
Women	20-24	143	9.9	0.0	\$12,887	3.2	1.7
Women	25-34	280	19.4	0.0	\$18,655	3.3	1.5
Women	35-44	239	16.6	0.0	\$28,477	3.5	1.3
Women	45-54	282	19.6	0.0	\$27,411	3.6	1.3
Women	55-64	293	20.3	0.0	\$31,135	3.6	1.3
Women	65-Up	88	6.1	0.0	\$20,204	3.5	1.1
Women	N/A	1	0.1	0.0	\$969	2.0	1.0
Women	Total	1,440	100.0	47.4	\$22,914	3.4	1.4
Men	00-19	97	6.7	0.0	\$6,625	2.6	1.4
Men	20-24	149	10.3	0.0	\$25,539	3.1	1.6
Men	25-34	315	21.7	0.0	\$39,505	3.4	1.3
Men	35-44	245	16.9	0.0	\$48,888	3.5	1.3
Men	45-54	254	17.5	0.0	\$53,109	3.6	1.2
Men	55-64	283	19.5	0.0	\$49,900	3.5	1.1
Men	65-Up	106	7.3	0.0	\$28,504	3.3	1.1
Men	N/A	1	0.1	0.0	\$56,038	4.0	1.0
Men	Total	1,450	100.0	47.7	\$41,075	3.4	1.3
N/A	N/A	148	100.0	0.0	\$13,772	2.1	1.1
N/A	Total	148	100.0	4.9	\$13,772	2.1	1.1
Total	00-19	211	6.9	0.0	\$5,382	2.6	1.4
Total	20-24	292	9.6	0.0	\$19,343	3.2	1.7
Total	25-34	595	19.6	0.0	\$29,693	3.3	1.4
Total	35-44	484	15.9	0.0	\$38,809	3.5	1.3
Total	45-54	536	17.6	0.0	\$39,589	3.6	1.3
Total	55-64	576	19.0	0.0	\$40,354	3.6	1.2
Total	65-Up	194	6.4	0.0	\$24,739	3.4	1.1
Total	N/A	150	4.9	0.0	\$13,969	2.1	1.1
Total	Total	3,038	100.0	100.0	\$31,137	3.3	1.3

Note: Persons worked at any time during the year.

County Determination: Based on county of employment in which the person made the most money in the year.

N/A: Represents persons with demographic data that is unavailable.

N/A = Nonresidents, individuals for whom demographic data are not available.

Source: Demographics of Persons Working in Wyoming by County, Industry, Age, & Gender, 2000-2017.

Research & Planning, Wyoming Department of Workforce Services.

Prepared by M. Moore, Research & Planning, WY DWS, 6/12/18.

Average Earnings by Age and Gender with Place of Work in Weston County in 2015

Gender	Age Group	Number	Age Percent	Gender Percent	Average Annual Wage	Average Quarters Worked	Average Annual Employers
Women	00-19	131	8.9	0.0	\$4,399	2.8	1.4
Women	20-24	125	8.5	0.0	\$12,907	3.1	1.5
Women	25-34	290	19.7	0.0	\$20,658	3.3	1.4
Women	35-44	252	17.1	0.0	\$27,691	3.5	1.4
Women	45-54	287	19.5	0.0	\$28,941	3.5	1.3
Women	55-64	281	19.1	0.0	\$32,253	3.7	1.2
Women	65-Up	109	7.4	0.0	\$18,767	3.3	1.1
Women	Total	1,475	100.0	48.7	\$23,440	3.4	1.3
Men	00-19	115	8.2	0.0	\$6,137	2.7	1.4
Men	20-24	128	9.1	0.0	\$25,713	3.2	1.6
Men	25-34	301	21.4	0.0	\$45,059	3.4	1.3
Men	35-44	234	16.6	0.0	\$50,256	3.6	1.3
Men	45-54	231	16.4	0.0	\$57,898	3.4	1.2
Men	55-64	291	20.7	0.0	\$49,761	3.6	1.2
Men	65-Up	106	7.5	0.0	\$27,256	3.3	1.1
Men	N/A	2	0.1	0.0	\$24,117	1.5	1.0
Men	Total	1,408	100.0	46.5	\$42,693	3.4	1.3
N/A	N/A	147	100.0	0.0	\$13,993	1.9	1.1
N/A	Total	147	100.0	4.9	\$13,993	1.9	1.1
Total	00-19	246	8.1	0.0	\$5,212	2.7	1.4
Total	20-24	253	8.3	0.0	\$19,386	3.1	1.6
Total	25-34	591	19.5	0.0	\$33,086	3.4	1.3
Total	35-44	486	16.0	0.0	\$38,556	3.5	1.3
Total	45-54	518	17.1	0.0	\$41,854	3.5	1.2
Total	55-64	572	18.9	0.0	\$41,160	3.6	1.2
Total	65-Up	215	7.1	0.0	\$22,952	3.3	1.1
Total	N/A	149	4.9	0.0	\$14,128	1.9	1.1
Total	Total	3,030	100.0	100.0	\$31,928	3.3	1.3

Note: Persons worked at any time during the year.

County Determination: Based on county of employment in which the person made the most money in the year.

N/A: Represents persons with demographic data that is unavailable.

N/A = Nonresidents, individuals for whom demographic data are not available.

Source: Demographics of Persons Working in Wyoming by County, Industry, Age, & Gender, 2000-2017.
Research & Planning, Wyoming Department of Workforce Services.

Prepared by M. Moore, Research & Planning, WY DWS, 6/12/18.

Average Earnings by Age and Gender with Place of Work in Weston County in 2016

Gender	Age Group	Number	Age Percent	Gender Percent	Average Annual Wage	Average Quarters Worked	Average Annual Employers
Women	00-19	129	8.9	0.0	\$3,327	2.6	1.3
Women	20-24	131	9.1	0.0	\$11,343	3.0	1.6
Women	25-34	270	18.7	0.0	\$23,761	3.4	1.4
Women	35-44	246	17.0	0.0	\$26,135	3.5	1.3
Women	45-54	287	19.9	0.0	\$29,776	3.5	1.3
Women	55-64	274	19.0	0.0	\$32,168	3.6	1.2
Women	65-Up	106	7.3	0.0	\$18,184	3.4	1.0
Women	Total	1,443	100.0	49.2	\$23,595	3.4	1.3
Men	00-19	102	7.6	0.0	\$5,467	2.7	1.3
Men	20-24	113	8.4	0.0	\$20,158	3.1	1.3
Men	25-34	303	22.5	0.0	\$38,740	3.4	1.2
Men	35-44	234	17.3	0.0	\$48,451	3.5	1.3
Men	45-54	212	15.7	0.0	\$54,731	3.6	1.3
Men	55-64	275	20.4	0.0	\$47,506	3.6	1.1
Men	65-Up	110	8.2	0.0	\$27,509	3.2	1.0
Men	Total	1,349	100.0	46.0	\$39,736	3.4	1.2
N/A	N/A	139	100.0	0.0	\$15,404	2.2	1.1
N/A	Total	139	100.0	4.7	\$15,404	2.2	1.1
Total	00-19	231	7.9	0.0	\$4,272	2.7	1.3
Total	20-24	244	8.3	0.0	\$15,425	3.1	1.5
Total	25-34	573	19.5	0.0	\$31,682	3.4	1.3
Total	35-44	480	16.4	0.0	\$37,014	3.5	1.3
Total	45-54	499	17.0	0.0	\$40,378	3.5	1.3
Total	55-64	549	18.7	0.0	\$39,851	3.6	1.2
Total	65-Up	216	7.4	0.0	\$22,933	3.3	1.0
Total	N/A	139	4.7	0.0	\$15,404	2.2	1.1
Total	Total	2,931	100.0	100.0	\$30,636	3.3	1.3

Note: Persons worked at any time during the year.

County Determination: Based on county of employment in which the person made the most money in the year.

N/A: Represents persons with demographic data that is unavailable.

N/A = Nonresidents, individuals for whom demographic data are not available.

Source: Demographics of Persons Working in Wyoming by County, Industry, Age, & Gender, 2000-2017.
Research & Planning, Wyoming Department of Workforce Services.

Prepared by M. Moore, Research & Planning, WY DWS, 6/12/18.

Average Earnings by Age and Gender with Place of Work in Weston County in 2017

Gender	Age Group	Number	Age Percent	Gender Percent	Average Annual Wage	Average Quarters Worked	Average Annual Employers
Women	00-19	112	8.4	0.0	\$4,304	2.7	1.4
Women	20-24	108	8.1	0.0	\$10,479	2.9	1.5
Women	25-34	239	18.0	0.0	\$24,562	3.4	1.4
Women	35-44	242	18.2	0.0	\$27,907	3.6	1.5
Women	45-54	257	19.3	0.0	\$31,857	3.6	1.3
Women	55-64	265	19.9	0.0	\$32,582	3.6	1.2
Women	65-Up	108	8.1	0.0	\$17,881	3.2	1.1
Women	Total	1,331	100.0	48.4	\$24,786	3.4	1.3
Men	00-19	93	7.3	0.0	\$4,974	2.7	1.3
Men	20-24	110	8.6	0.0	\$23,395	3.1	1.5
Men	25-34	265	20.7	0.0	\$43,949	3.5	1.3
Men	35-44	214	16.7	0.0	\$51,779	3.5	1.3
Men	45-54	206	16.1	0.0	\$56,984	3.5	1.2
Men	55-64	276	21.6	0.0	\$49,183	3.4	1.1
Men	65-Up	114	8.9	0.0	\$27,648	3.3	1.1
Men	Total	1,278	100.0	46.5	\$42,432	3.4	1.3
N/A	N/A	140	100.0	0.0	\$18,446	2.3	1.1
N/A	Total	140	100.0	5.1	\$18,446	2.3	1.1
Total	00-19	205	7.5	0.0	\$4,608	2.7	1.4
Total	20-24	218	7.9	0.0	\$16,996	3.0	1.5
Total	25-34	504	18.3	0.0	\$34,756	3.5	1.3
Total	35-44	456	16.6	0.0	\$39,110	3.6	1.4
Total	45-54	463	16.8	0.0	\$43,037	3.5	1.3
Total	55-64	541	19.7	0.0	\$41,052	3.5	1.2
Total	65-Up	222	8.1	0.0	\$22,896	3.3	1.1
Total	N/A	140	5.1	0.0	\$18,446	2.3	1.1
Total	Total	2,749	100.0	100.0	\$32,667	3.3	1.3

Note: Persons worked at any time during the year.

County Determination: Based on county of employment in which the person made the most money in the year.

N/A: Represents persons with demographic data that is unavailable.

N/A = Nonresidents, individuals for whom demographic data are not available.

Source: Demographics of Persons Working in Wyoming by County, Industry, Age, & Gender, 2000-2017.
Research & Planning, Wyoming Department of Workforce Services.

Prepared by M. Moore, Research & Planning, WY DWS, 6/12/18.