

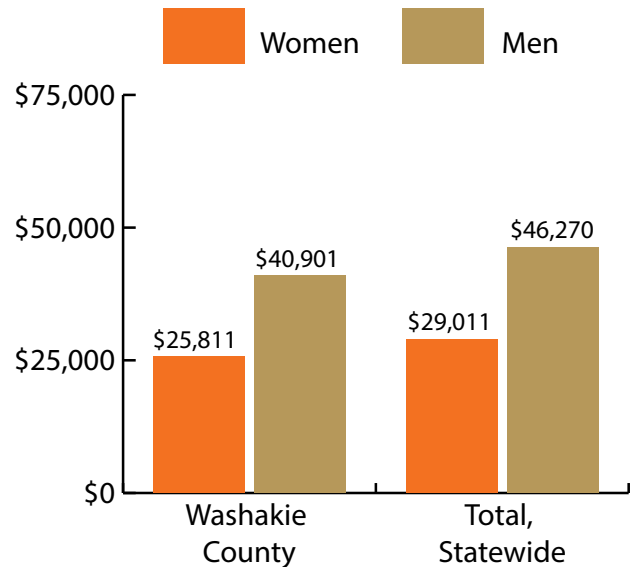
Washakie County at a Glance, 2017

Demographics of Persons Working in Wyoming by County, Industry, Age, & Gender, 2000-2017

Table: Total Number of Persons Working in Washakie County, WY, at Any Time by Gender and Age, 2016-2017

Gender	2016	2017	Change	
			N	%
Women	1,987	1,921	-66	-3.3
Men	2,185	2,112	-73	-3.3
Nonresidents	233	258	25	10.7
Total	4,405	4,291	-114	-2.6

Age	2016	2017	Change	
			N	%
00-19	348	315	-33	-9.5
20-24	321	306	-15	-4.7
25-34	733	679	-54	-7.4
35-44	791	752	-39	-4.9
45-54	779	781	2	0.3
55-64	811	805	-6	-0.7
65-Up	387	394	7	1.8
Nonresidents	235	259	24	10.2
Total	4,405	4,291	-114	-2.6



Women's Wages as % of Men's Wages

Washakie County: 63.1%

Total: 62.7%

Figure: Average Annual Wages by Gender, 2017

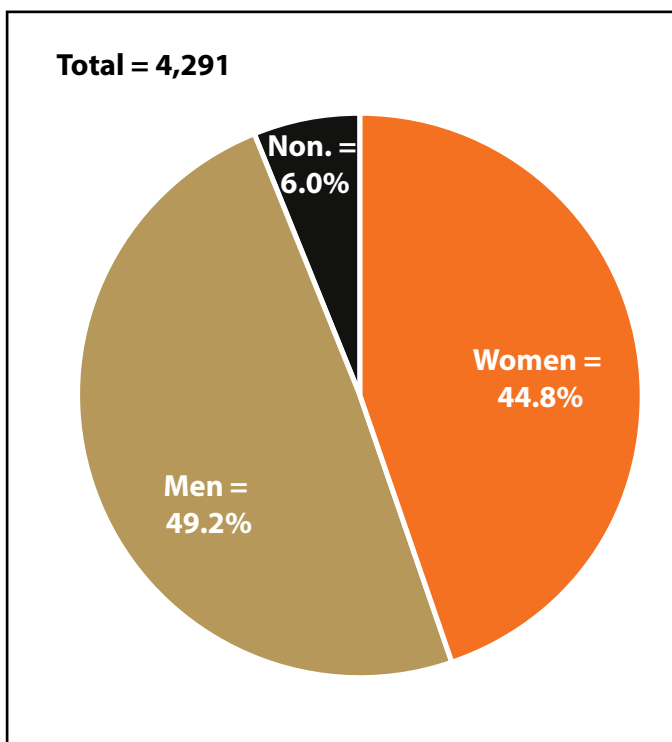


Figure: Persons Working by Gender, 2017

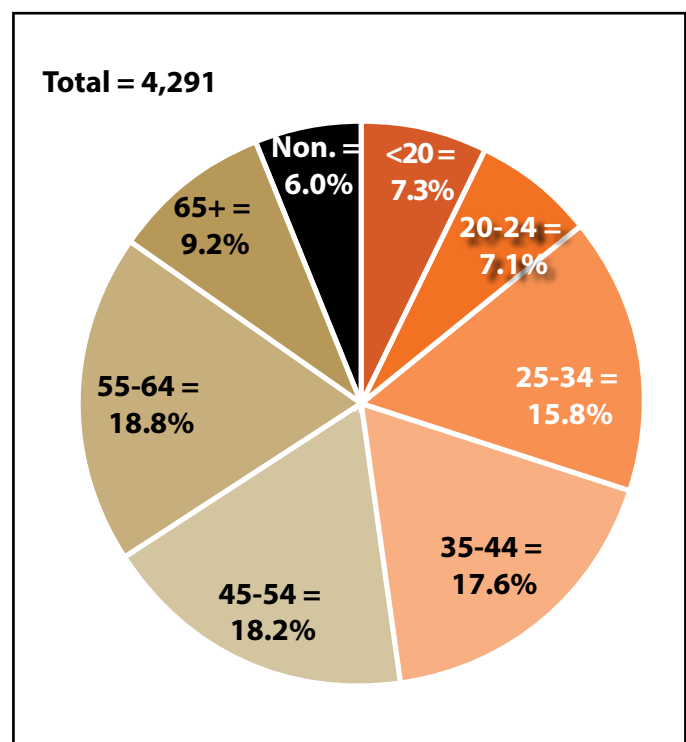


Figure: Persons Working by Age, 2017

Note: Nonresidents are individuals for whom demographic data are not available.

Source: Demographics of Persons Working in Wyoming by County, Industry, Age, & Gender, 2000-2017. Research & Planning, Wyoming Department of Workforce Services. Prepared by M. Moore, Research & Planning, WY DWS, 6/12/18.

Persons Working in Washakie County by Gender and Age, 2000-2017

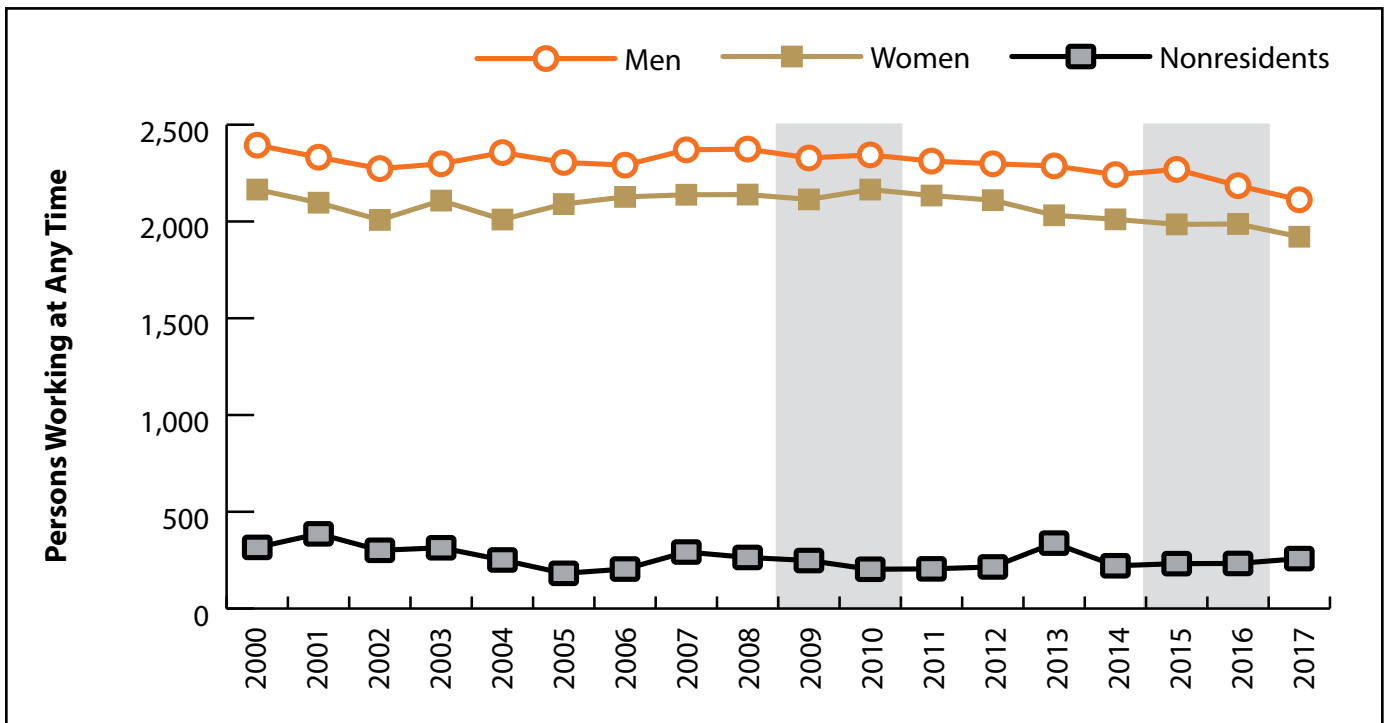


Figure: Persons Working in Washakie County at Any Time by Gender, 2000-2017

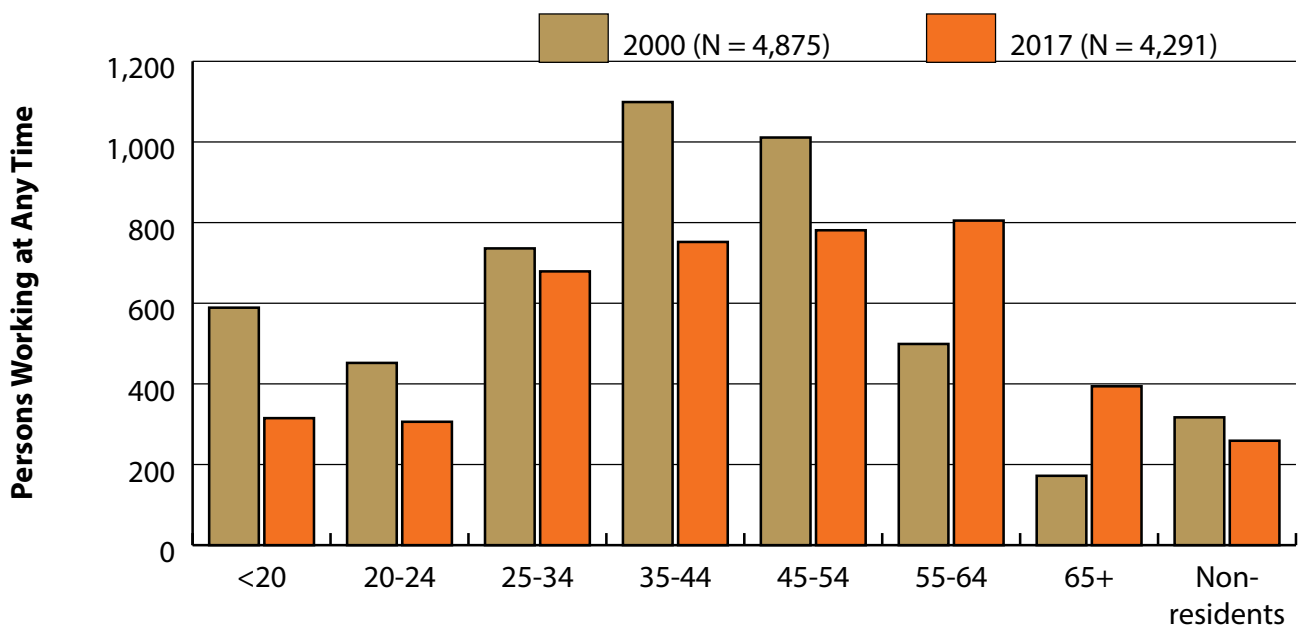


Figure: Persons Working in Washakie County at Any Time by Age, 2000-2017

Note: Nonresidents are individuals for whom demographic data are not available.
 Shaded areas indicate periods of economic downturn: 2009Q1-2010Q1 and 2015Q2-2016Q4.
 Source: Demographics of Persons Working in Wyoming by County, Industry, Age, & Gender, 2000-2017. Research & Planning, Wyoming Department of Workforce Services. Prepared by M. Moore, Research & Planning, WY DWS, 6/12/18.

Wages for Persons Working in Washakie County by Gender, 2000-2017

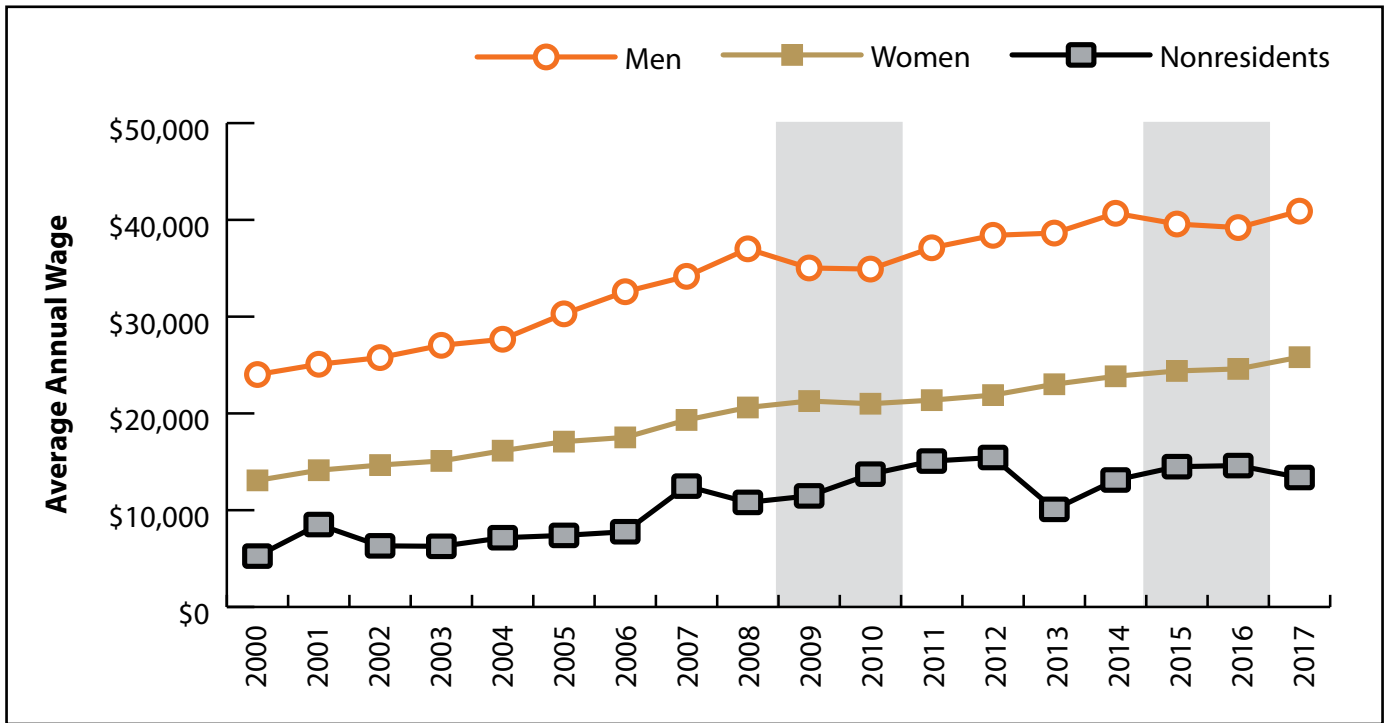


Figure: Average Annual Wage for Persons Working in Washakie County at Any Time by Age, 2000-2017

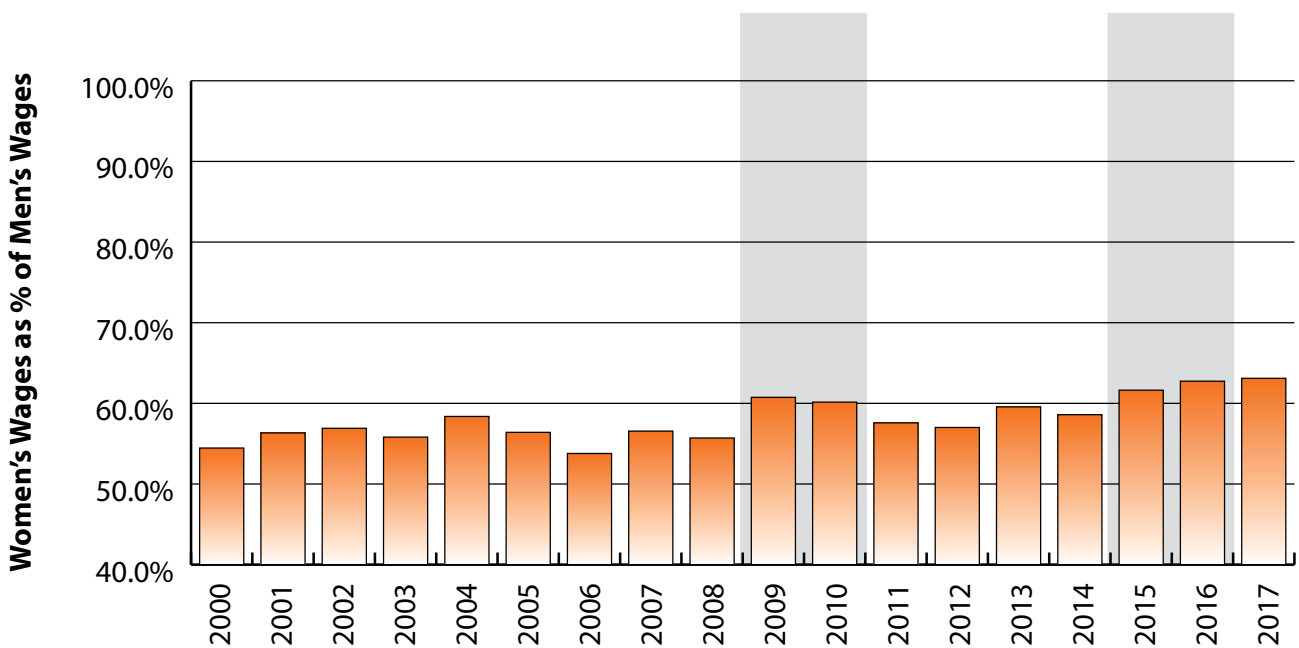


Figure: Women's Average Annual Wages as a Percent of Men's Wages for Persons Working in Washakie County at Any Time by Age, 2000-2017

Note: Nonresidents are individuals for whom demographic data are not available.

Shaded areas indicate periods of economic downturn: 2009Q1-2010Q1 and 2015Q2-2016Q4.

Source: Demographics of Persons Working in Wyoming by County, Industry, Age, & Gender, 2000-2017. Research & Planning, Wyoming Department of Workforce Services. Prepared by M. Moore, Research & Planning, WY DWS, 6/12/18.

Average Earnings by Age and Gender with Place of Work in Washakie County in 2000

Gender	Age Group	Number	Age Percent	Gender Percent	Average Annual Wage	Average Quarters Worked	Average Annual Employers
Women	00-19	283	13.1	0.0	\$2,861	2.7	1.7
Women	20-24	227	10.5	0.0	\$6,546	2.9	2.0
Women	25-34	349	16.1	0.0	\$12,890	3.3	1.7
Women	35-44	533	24.6	0.0	\$16,738	3.5	1.5
Women	45-54	480	22.2	0.0	\$17,965	3.5	1.4
Women	55-64	215	9.9	0.0	\$15,763	3.4	1.2
Women	65-Up	77	3.6	0.0	\$7,662	3.1	1.2
Women	N/A	1	0.0	0.0	\$382	1.0	1.0
Women	Total	2,165	100.0	44.4	\$13,080	3.3	1.5
Men	00-19	306	12.8	0.0	\$3,087	2.5	1.6
Men	20-24	225	9.4	0.0	\$10,122	2.8	1.9
Men	25-34	387	16.2	0.0	\$23,069	3.4	1.6
Men	35-44	566	23.6	0.0	\$29,434	3.5	1.4
Men	45-54	531	22.2	0.0	\$34,684	3.5	1.3
Men	55-64	284	11.9	0.0	\$31,988	3.4	1.2
Men	65-Up	95	4.0	0.0	\$12,489	2.9	1.2
Men	Total	2,394	100.0	49.1	\$24,018	3.3	1.4
N/A	N/A	316	100.0	0.0	\$5,255	1.5	1.0
N/A	Total	316	100.0	6.5	\$5,255	1.5	1.0
Total	00-19	589	12.1	0.0	\$2,978	2.6	1.7
Total	20-24	452	9.3	0.0	\$8,326	2.9	2.0
Total	25-34	736	15.1	0.0	\$18,242	3.4	1.6
Total	35-44	1,099	22.5	0.0	\$23,277	3.5	1.4
Total	45-54	1,011	20.7	0.0	\$26,746	3.5	1.3
Total	55-64	499	10.2	0.0	\$24,997	3.4	1.2
Total	65-Up	172	3.5	0.0	\$10,328	3.0	1.2
Total	N/A	317	6.5	0.0	\$5,240	1.5	1.0
Total	Total	4,875	100.0	100.0	\$17,944	3.2	1.5

Note: Persons worked at any time during the year.

County Determination: Based on county of employment in which the person made the most money in the year.

N/A: Represents persons with demographic data that is unavailable.

N/A = Nonresidents, individuals for whom demographic data are not available.

Source: Demographics of Persons Working in Wyoming by County, Industry, Age, & Gender, 2000-2017.
Research & Planning, Wyoming Department of Workforce Services.

Prepared by M. Moore, Research & Planning, WY DWS, 6/12/18.

Average Earnings by Age and Gender with Place of Work in Washakie County in 2001

Gender	Age Group	Number	Age Percent	Gender Percent	Average Annual Wage	Average Quarters Worked	Average Annual Employers
Women	00-19	246	11.7	0.0	\$2,987	2.7	1.6
Women	20-24	230	11.0	0.0	\$6,632	2.9	1.8
Women	25-34	353	16.8	0.0	\$13,093	3.2	1.6
Women	35-44	495	23.6	0.0	\$17,898	3.6	1.4
Women	45-54	474	22.6	0.0	\$19,915	3.5	1.3
Women	55-64	218	10.4	0.0	\$17,506	3.5	1.3
Women	65-Up	80	3.8	0.0	\$7,879	3.0	1.1
Women	N/A	1	0.0	0.0	\$245	1.0	1.0
Women	Total	2,097	100.0	43.6	\$14,129	3.3	1.5
Men	00-19	285	12.2	0.0	\$3,014	2.5	1.6
Men	20-24	217	9.3	0.0	\$12,111	3.0	1.8
Men	25-34	395	16.9	0.0	\$23,730	3.3	1.5
Men	35-44	516	22.1	0.0	\$31,947	3.5	1.4
Men	45-54	523	22.4	0.0	\$35,944	3.6	1.3
Men	55-64	290	12.4	0.0	\$31,625	3.3	1.2
Men	65-Up	105	4.5	0.0	\$11,096	2.5	1.1
Men	N/A	1	0.0	0.0	\$7,715	1.0	1.0
Men	Total	2,332	100.0	48.4	\$25,080	3.2	1.4
N/A	N/A	386	100.0	0.0	\$8,515	1.3	1.0
N/A	Total	386	100.0	8.0	\$8,515	1.3	1.0
Total	00-19	531	11.0	0.0	\$3,001	2.6	1.6
Total	20-24	447	9.3	0.0	\$9,292	2.9	1.8
Total	25-34	748	15.5	0.0	\$18,710	3.2	1.5
Total	35-44	1,011	21.0	0.0	\$25,068	3.5	1.4
Total	45-54	997	20.7	0.0	\$28,323	3.5	1.3
Total	55-64	508	10.6	0.0	\$25,566	3.4	1.3
Total	65-Up	185	3.8	0.0	\$9,705	2.7	1.1
Total	N/A	388	8.1	0.0	\$8,492	1.3	1.0
Total	Total	4,815	100.0	100.0	\$18,983	3.1	1.4

Note: Persons worked at any time during the year.

County Determination: Based on county of employment in which the person made the most money in the year.

N/A: Represents persons with demographic data that is unavailable.

N/A = Nonresidents, individuals for whom demographic data are not available.

Source: Demographics of Persons Working in Wyoming by County, Industry, Age, & Gender, 2000-2017.
Research & Planning, Wyoming Department of Workforce Services.

Prepared by M. Moore, Research & Planning, WY DWS, 6/12/18.

Average Earnings by Age and Gender with Place of Work in Washakie County in 2002

Gender	Age Group	Number	Age Percent	Gender Percent	Average Annual Wage	Average Quarters Worked	Average Annual Employers
Women	00-19	219	10.9	0.0	\$3,062	2.7	1.5
Women	20-24	213	10.6	0.0	\$7,083	3.0	1.8
Women	25-34	322	16.0	0.0	\$14,046	3.2	1.5
Women	35-44	470	23.4	0.0	\$17,692	3.5	1.4
Women	45-54	470	23.4	0.0	\$19,909	3.6	1.3
Women	55-64	235	11.7	0.0	\$18,520	3.5	1.2
Women	65-Up	78	3.9	0.0	\$9,209	3.3	1.2
Women	N/A	1	0.0	0.0	\$587	1.0	1.0
Women	Total	2,008	100.0	43.8	\$14,664	3.3	1.4
Men	00-19	290	12.8	0.0	\$3,099	2.5	1.6
Men	20-24	222	9.8	0.0	\$11,764	3.0	1.8
Men	25-34	365	16.1	0.0	\$24,582	3.3	1.5
Men	35-44	474	20.9	0.0	\$32,410	3.5	1.4
Men	45-54	519	22.8	0.0	\$37,190	3.5	1.3
Men	55-64	299	13.2	0.0	\$34,216	3.4	1.3
Men	65-Up	103	4.5	0.0	\$11,586	2.9	1.2
Men	N/A	1	0.0	0.0	\$52	1.0	1.0
Men	Total	2,273	100.0	49.6	\$25,768	3.3	1.4
N/A	N/A	301	100.0	0.0	\$6,315	1.4	1.0
N/A	Total	301	100.0	6.6	\$6,315	1.4	1.0
Total	00-19	509	11.1	0.0	\$3,083	2.6	1.6
Total	20-24	435	9.5	0.0	\$9,472	3.0	1.8
Total	25-34	687	15.0	0.0	\$19,644	3.3	1.5
Total	35-44	944	20.6	0.0	\$25,082	3.5	1.4
Total	45-54	989	21.6	0.0	\$28,978	3.5	1.3
Total	55-64	534	11.7	0.0	\$27,309	3.5	1.3
Total	65-Up	181	4.0	0.0	\$10,561	3.1	1.2
Total	N/A	303	6.6	0.0	\$6,275	1.4	1.0
Total	Total	4,582	100.0	100.0	\$19,624	3.2	1.4

Note: Persons worked at any time during the year.

County Determination: Based on county of employment in which the person made the most money in the year.

N/A: Represents persons with demographic data that is unavailable.

N/A = Nonresidents, individuals for whom demographic data are not available.

Source: Demographics of Persons Working in Wyoming by County, Industry, Age, & Gender, 2000-2017.
Research & Planning, Wyoming Department of Workforce Services.

Prepared by M. Moore, Research & Planning, WY DWS, 6/12/18.

Average Earnings by Age and Gender with Place of Work in Washakie County in 2003

Gender	Age Group	Number	Age Percent	Gender Percent	Average Annual Wage	Average Quarters Worked	Average Annual Employers
Women	00-19	241	11.4	0.0	\$3,336	2.7	1.6
Women	20-24	197	9.3	0.0	\$7,405	2.9	1.9
Women	25-34	347	16.5	0.0	\$13,614	3.2	1.5
Women	35-44	464	22.0	0.0	\$18,301	3.5	1.4
Women	45-54	494	23.4	0.0	\$20,749	3.6	1.3
Women	55-64	280	13.3	0.0	\$18,985	3.5	1.3
Women	65-Up	84	4.0	0.0	\$9,032	3.2	1.2
Women	N/A	1	0.0	0.0	\$3,408	1.0	1.0
Women	Total	2,108	100.0	44.7	\$15,089	3.3	1.4
Men	00-19	283	12.3	0.0	\$3,593	2.6	1.5
Men	20-24	215	9.4	0.0	\$12,134	2.9	1.7
Men	25-34	362	15.8	0.0	\$26,826	3.4	1.5
Men	35-44	474	20.6	0.0	\$34,002	3.5	1.4
Men	45-54	523	22.8	0.0	\$37,347	3.5	1.3
Men	55-64	335	14.6	0.0	\$35,101	3.5	1.2
Men	65-Up	105	4.6	0.0	\$13,028	2.9	1.2
Men	N/A	1	0.0	0.0	\$13,260	3.0	1.0
Men	Total	2,298	100.0	48.7	\$27,035	3.3	1.4
N/A	N/A	314	100.0	0.0	\$6,266	1.4	1.1
N/A	Total	314	100.0	6.7	\$6,266	1.4	1.1
Total	00-19	524	11.1	0.0	\$3,475	2.7	1.6
Total	20-24	412	8.7	0.0	\$9,873	2.9	1.8
Total	25-34	709	15.0	0.0	\$20,360	3.3	1.5
Total	35-44	938	19.9	0.0	\$26,235	3.5	1.4
Total	45-54	1,017	21.5	0.0	\$29,285	3.5	1.3
Total	55-64	615	13.0	0.0	\$27,764	3.5	1.2
Total	65-Up	189	4.0	0.0	\$11,252	3.0	1.2
Total	N/A	316	6.7	0.0	\$6,279	1.4	1.1
Total	Total	4,720	100.0	100.0	\$20,318	3.2	1.4

Note: Persons worked at any time during the year.

County Determination: Based on county of employment in which the person made the most money in the year.

N/A: Represents persons with demographic data that is unavailable.

N/A = Nonresidents, individuals for whom demographic data are not available.

Source: Demographics of Persons Working in Wyoming by County, Industry, Age, & Gender, 2000-2017.
Research & Planning, Wyoming Department of Workforce Services.

Prepared by M. Moore, Research & Planning, WY DWS, 6/12/18.

Average Earnings by Age and Gender with Place of Work in Washakie County in 2004

Gender	Age Group	Number	Age Percent	Gender Percent	Average Annual Wage	Average Quarters Worked	Average Annual Employers
Women	00-19	210	10.4	0.0	\$2,919	2.6	1.6
Women	20-24	196	9.8	0.0	\$7,605	2.9	1.7
Women	25-34	333	16.6	0.0	\$14,459	3.2	1.6
Women	35-44	412	20.5	0.0	\$19,702	3.5	1.4
Women	45-54	481	23.9	0.0	\$22,038	3.6	1.3
Women	55-64	289	14.4	0.0	\$20,982	3.6	1.2
Women	65-Up	87	4.3	0.0	\$8,474	3.1	1.0
Women	N/A	2	0.1	0.0	\$10,825	1.0	1.0
Women	Total	2,010	100.0	43.5	\$16,149	3.3	1.4
Men	00-19	265	11.2	0.0	\$3,657	2.6	1.4
Men	20-24	260	11.0	0.0	\$12,143	2.9	1.8
Men	25-34	393	16.7	0.0	\$26,092	3.3	1.5
Men	35-44	433	18.4	0.0	\$36,666	3.6	1.4
Men	45-54	516	21.9	0.0	\$38,501	3.5	1.3
Men	55-64	363	15.4	0.0	\$35,560	3.5	1.2
Men	65-Up	125	5.3	0.0	\$17,075	3.0	1.1
Men	N/A	1	0.0	0.0	\$7,824	3.0	1.0
Men	Total	2,356	100.0	51.0	\$27,663	3.3	1.4
N/A	N/A	251	100.0	0.0	\$7,154	1.6	1.0
N/A	Total	251	100.0	5.4	\$7,154	1.6	1.0
Total	00-19	475	10.3	0.0	\$3,331	2.6	1.5
Total	20-24	456	9.9	0.0	\$10,193	2.9	1.8
Total	25-34	726	15.7	0.0	\$20,756	3.3	1.5
Total	35-44	845	18.3	0.0	\$28,395	3.6	1.4
Total	45-54	997	21.6	0.0	\$30,558	3.6	1.3
Total	55-64	652	14.1	0.0	\$29,098	3.5	1.2
Total	65-Up	212	4.6	0.0	\$13,545	3.1	1.1
Total	N/A	254	5.5	0.0	\$7,186	1.6	1.0
Total	Total	4,617	100.0	100.0	\$21,535	3.2	1.4

Note: Persons worked at any time during the year.

County Determination: Based on county of employment in which the person made the most money in the year.

N/A: Represents persons with demographic data that is unavailable.

N/A = Nonresidents, individuals for whom demographic data are not available.

Source: Demographics of Persons Working in Wyoming by County, Industry, Age, & Gender, 2000-2017.

Research & Planning, Wyoming Department of Workforce Services.

Prepared by M. Moore, Research & Planning, WY DWS, 6/12/18.

Average Earnings by Age and Gender with Place of Work in Washakie County in 2005

Gender	Age Group	Number	Age Percent	Gender Percent	Average Annual Wage	Average Quarters Worked	Average Annual Employers
Women	00-19	215	10.3	0.0	\$2,737	2.6	1.6
Women	20-24	216	10.3	0.0	\$8,318	3.0	1.9
Women	25-34	341	16.3	0.0	\$15,081	3.4	1.5
Women	35-44	410	19.6	0.0	\$20,544	3.6	1.4
Women	45-54	487	23.3	0.0	\$23,270	3.6	1.3
Women	55-64	325	15.6	0.0	\$22,717	3.6	1.2
Women	65-Up	95	4.5	0.0	\$10,232	3.3	1.2
Women	N/A	1	0.0	0.0	\$66,600	4.0	1.0
Women	Total	2,090	100.0	45.7	\$17,084	3.4	1.4
Men	00-19	250	10.8	0.0	\$3,720	2.5	1.5
Men	20-24	227	9.8	0.0	\$14,793	3.0	1.8
Men	25-34	386	16.7	0.0	\$29,326	3.4	1.5
Men	35-44	429	18.6	0.0	\$38,934	3.7	1.4
Men	45-54	503	21.8	0.0	\$40,991	3.6	1.3
Men	55-64	360	15.6	0.0	\$40,160	3.6	1.2
Men	65-Up	149	6.5	0.0	\$16,246	3.0	1.2
Men	N/A	1	0.0	0.0	\$7,574	2.0	1.0
Men	Total	2,305	100.0	50.4	\$30,288	3.4	1.4
N/A	N/A	182	100.0	0.0	\$7,394	1.9	1.1
N/A	Total	182	100.0	4.0	\$7,394	1.9	1.1
Total	00-19	465	10.2	0.0	\$3,265	2.5	1.6
Total	20-24	443	9.7	0.0	\$11,636	3.0	1.8
Total	25-34	727	15.9	0.0	\$22,644	3.4	1.5
Total	35-44	839	18.3	0.0	\$29,947	3.6	1.4
Total	45-54	990	21.6	0.0	\$32,274	3.6	1.3
Total	55-64	685	15.0	0.0	\$31,884	3.6	1.2
Total	65-Up	244	5.3	0.0	\$13,905	3.1	1.2
Total	N/A	184	4.0	0.0	\$7,717	1.9	1.1
Total	Total	4,577	100.0	100.0	\$23,348	3.3	1.4

Note: Persons worked at any time during the year.

County Determination: Based on county of employment in which the person made the most money in the year.

N/A: Represents persons with demographic data that is unavailable.

N/A = Nonresidents, individuals for whom demographic data are not available.

Source: Demographics of Persons Working in Wyoming by County, Industry, Age, & Gender, 2000-2017.
Research & Planning, Wyoming Department of Workforce Services.

Prepared by M. Moore, Research & Planning, WY DWS, 6/12/18.

Average Earnings by Age and Gender with Place of Work in Washakie County in 2006

Gender	Age Group	Number	Age Percent	Gender Percent	Average Annual Wage	Average Quarters Worked	Average Annual Employers
Women	00-19	230	10.8	0.0	\$3,328	2.7	1.8
Women	20-24	230	10.8	0.0	\$8,219	2.9	2.0
Women	25-34	330	15.5	0.0	\$16,197	3.3	1.6
Women	35-44	385	18.1	0.0	\$21,303	3.6	1.5
Women	45-54	505	23.7	0.0	\$24,317	3.6	1.4
Women	55-64	340	16.0	0.0	\$22,065	3.6	1.3
Women	65-Up	106	5.0	0.0	\$11,531	3.2	1.2
Women	N/A	1	0.0	0.0	\$60,600	4.0	1.0
Women	Total	2,127	100.0	46.0	\$17,521	3.4	1.5
Men	00-19	247	10.8	0.0	\$4,294	2.6	1.8
Men	20-24	216	9.4	0.0	\$17,911	3.1	1.9
Men	25-34	402	17.5	0.0	\$31,278	3.4	1.6
Men	35-44	411	17.9	0.0	\$40,762	3.5	1.4
Men	45-54	514	22.4	0.0	\$44,128	3.6	1.3
Men	55-64	356	15.5	0.0	\$41,704	3.6	1.3
Men	65-Up	145	6.3	0.0	\$19,627	3.0	1.2
Men	Total	2,291	100.0	49.6	\$32,575	3.4	1.5
N/A	N/A	204	100.0	0.0	\$7,772	1.8	1.1
N/A	Total	204	100.0	4.4	\$7,772	1.8	1.1
Total	00-19	477	10.3	0.0	\$3,828	2.6	1.8
Total	20-24	446	9.6	0.0	\$12,913	3.0	1.9
Total	25-34	732	15.8	0.0	\$24,479	3.3	1.6
Total	35-44	796	17.2	0.0	\$31,350	3.6	1.4
Total	45-54	1,019	22.0	0.0	\$34,310	3.6	1.3
Total	55-64	696	15.1	0.0	\$32,110	3.6	1.3
Total	65-Up	251	5.4	0.0	\$16,208	3.1	1.2
Total	N/A	205	4.4	0.0	\$8,030	1.8	1.1
Total	Total	4,622	100.0	100.0	\$24,553	3.3	1.5

Note: Persons worked at any time during the year.

County Determination: Based on county of employment in which the person made the most money in the year.

N/A: Represents persons with demographic data that is unavailable.

N/A = Nonresidents, individuals for whom demographic data are not available.

Source: Demographics of Persons Working in Wyoming by County, Industry, Age, & Gender, 2000-2017.
Research & Planning, Wyoming Department of Workforce Services.

Prepared by M. Moore, Research & Planning, WY DWS, 6/12/18.

Average Earnings by Age and Gender with Place of Work in Washakie County in 2007

Gender	Age Group	Number	Age Percent	Gender Percent	Average Annual Wage	Average Quarters Worked	Average Annual Employers
Women	00-19	254	11.9	0.0	\$3,578	2.7	1.6
Women	20-24	179	8.4	0.0	\$9,954	3.0	1.8
Women	25-34	349	16.3	0.0	\$17,562	3.3	1.5
Women	35-44	395	18.5	0.0	\$22,554	3.6	1.5
Women	45-54	495	23.2	0.0	\$27,129	3.6	1.4
Women	55-64	353	16.5	0.0	\$24,218	3.6	1.2
Women	65-Up	112	5.2	0.0	\$13,803	3.2	1.1
Women	N/A	1	0.0	0.0	\$57,600	4.0	1.0
Women	Total	2,138	100.0	44.5	\$19,322	3.4	1.4
Men	00-19	233	9.8	0.0	\$3,909	2.6	1.6
Men	20-24	233	9.8	0.0	\$16,200	3.1	1.9
Men	25-34	429	18.1	0.0	\$32,295	3.5	1.6
Men	35-44	411	17.3	0.0	\$45,113	3.6	1.4
Men	45-54	522	22.0	0.0	\$46,489	3.6	1.2
Men	55-64	384	16.2	0.0	\$42,934	3.5	1.2
Men	65-Up	157	6.6	0.0	\$19,933	2.8	1.2
Men	N/A	1	0.0	0.0	\$413	1.0	1.0
Men	Total	2,370	100.0	49.4	\$34,163	3.4	1.4
N/A	N/A	292	100.0	0.0	\$12,486	1.9	1.2
N/A	Total	292	100.0	6.1	\$12,486	1.9	1.2
Total	00-19	487	10.1	0.0	\$3,737	2.7	1.6
Total	20-24	412	8.6	0.0	\$13,487	3.1	1.9
Total	25-34	778	16.2	0.0	\$25,686	3.4	1.6
Total	35-44	806	16.8	0.0	\$34,058	3.6	1.4
Total	45-54	1,017	21.2	0.0	\$37,066	3.6	1.3
Total	55-64	737	15.4	0.0	\$33,969	3.6	1.2
Total	65-Up	269	5.6	0.0	\$17,380	3.0	1.2
Total	N/A	294	6.1	0.0	\$12,599	1.9	1.2
Total	Total	4,800	100.0	100.0	\$26,234	3.3	1.4

Note: Persons worked at any time during the year.

County Determination: Based on county of employment in which the person made the most money in the year.

N/A: Represents persons with demographic data that is unavailable.

N/A = Nonresidents, individuals for whom demographic data are not available.

Source: Demographics of Persons Working in Wyoming by County, Industry, Age, & Gender, 2000-2017.
Research & Planning, Wyoming Department of Workforce Services.

Prepared by M. Moore, Research & Planning, WY DWS, 6/12/18.

Average Earnings by Age and Gender with Place of Work in Washakie County in 2008

Gender	Age Group	Number	Age Percent	Gender Percent	Average Annual Wage	Average Quarters Worked	Average Annual Employers
Women	00-19	235	11.0	0.0	\$3,718	2.8	1.7
Women	20-24	187	8.7	0.0	\$11,070	3.0	1.8
Women	25-34	351	16.4	0.0	\$18,662	3.4	1.6
Women	35-44	366	17.1	0.0	\$25,701	3.6	1.4
Women	45-54	508	23.7	0.0	\$27,467	3.7	1.3
Women	55-64	367	17.2	0.0	\$25,163	3.7	1.2
Women	65-Up	124	5.8	0.0	\$16,037	3.4	1.2
Women	N/A	1	0.0	0.0	\$13,500	1.0	1.0
Women	Total	2,139	100.0	44.8	\$20,613	3.4	1.5
Men	00-19	229	9.6	0.0	\$4,853	2.7	1.7
Men	20-24	234	9.9	0.0	\$16,879	3.0	1.9
Men	25-34	433	18.2	0.0	\$35,889	3.4	1.5
Men	35-44	374	15.8	0.0	\$46,904	3.6	1.3
Men	45-54	521	21.9	0.0	\$51,045	3.6	1.3
Men	55-64	417	17.6	0.0	\$46,265	3.5	1.2
Men	65-Up	165	7.0	0.0	\$23,168	3.0	1.3
Men	N/A	1	0.0	0.0	\$643	1.0	2.0
Men	Total	2,374	100.0	49.7	\$37,006	3.4	1.4
N/A	N/A	264	100.0	0.0	\$10,804	1.7	1.2
N/A	Total	264	100.0	5.5	\$10,804	1.7	1.2
Total	00-19	464	9.7	0.0	\$4,278	2.8	1.7
Total	20-24	421	8.8	0.0	\$14,299	3.0	1.8
Total	25-34	784	16.4	0.0	\$28,177	3.4	1.5
Total	35-44	740	15.5	0.0	\$36,417	3.6	1.4
Total	45-54	1,029	21.5	0.0	\$39,405	3.6	1.3
Total	55-64	784	16.4	0.0	\$36,387	3.6	1.2
Total	65-Up	289	6.0	0.0	\$20,108	3.2	1.2
Total	N/A	266	5.6	0.0	\$10,776	1.7	1.2
Total	Total	4,777	100.0	100.0	\$28,218	3.3	1.4

Note: Persons worked at any time during the year.

County Determination: Based on county of employment in which the person made the most money in the year.

N/A: Represents persons with demographic data that is unavailable.

N/A = Nonresidents, individuals for whom demographic data are not available.

Source: Demographics of Persons Working in Wyoming by County, Industry, Age, & Gender, 2000-2017.
Research & Planning, Wyoming Department of Workforce Services.

Prepared by M. Moore, Research & Planning, WY DWS, 6/12/18.

Average Earnings by Age and Gender with Place of Work in Washakie County in 2009

Gender	Age Group	Number	Age Percent	Gender Percent	Average Annual Wage	Average Quarters Worked	Average Annual Employers
Women	00-19	204	9.6	0.0	\$4,268	2.9	1.6
Women	20-24	198	9.4	0.0	\$9,362	2.9	1.6
Women	25-34	359	17.0	0.0	\$18,716	3.3	1.5
Women	35-44	363	17.2	0.0	\$25,682	3.6	1.4
Women	45-54	496	23.5	0.0	\$28,958	3.7	1.3
Women	55-64	371	17.5	0.0	\$26,549	3.7	1.2
Women	65-Up	123	5.8	0.0	\$16,297	3.3	1.2
Women	Total	2,114	100.0	45.1	\$21,279	3.4	1.4
Men	00-19	211	9.1	0.0	\$4,986	2.8	1.5
Men	20-24	223	9.6	0.0	\$14,372	2.9	1.7
Men	25-34	441	18.9	0.0	\$31,983	3.4	1.4
Men	35-44	393	16.9	0.0	\$42,100	3.5	1.3
Men	45-54	492	21.1	0.0	\$49,000	3.6	1.2
Men	55-64	414	17.8	0.0	\$44,827	3.5	1.2
Men	65-Up	154	6.6	0.0	\$25,804	3.1	1.2
Men	Total	2,328	100.0	49.6	\$35,029	3.4	1.3
N/A	N/A	248	100.0	0.0	\$11,477	1.9	1.1
N/A	Total	248	100.0	5.3	\$11,477	1.9	1.1
Total	00-19	415	8.8	0.0	\$4,633	2.9	1.6
Total	20-24	421	9.0	0.0	\$12,016	2.9	1.6
Total	25-34	800	17.1	0.0	\$26,029	3.4	1.4
Total	35-44	756	16.1	0.0	\$34,217	3.5	1.3
Total	45-54	988	21.1	0.0	\$38,938	3.7	1.3
Total	55-64	785	16.7	0.0	\$36,188	3.6	1.2
Total	65-Up	277	5.9	0.0	\$21,582	3.2	1.2
Total	N/A	248	5.3	0.0	\$11,477	1.9	1.1
Total	Total	4,690	100.0	100.0	\$27,586	3.3	1.3

Note: Persons worked at any time during the year.

County Determination: Based on county of employment in which the person made the most money in the year.

N/A: Represents persons with demographic data that is unavailable.

N/A = Nonresidents, individuals for whom demographic data are not available.

Source: Demographics of Persons Working in Wyoming by County, Industry, Age, & Gender, 2000-2017.
Research & Planning, Wyoming Department of Workforce Services.

Prepared by M. Moore, Research & Planning, WY DWS, 6/12/18.

Average Earnings by Age and Gender with Place of Work in Washakie County in 2010

Gender	Age Group	Number	Age Percent	Gender Percent	Average Annual Wage	Average Quarters Worked	Average Annual Employers
Women	00-19	199	9.2	0.0	\$3,468	2.7	1.5
Women	20-24	204	9.4	0.0	\$9,947	3.0	1.6
Women	25-34	375	17.3	0.0	\$18,322	3.3	1.4
Women	35-44	349	16.1	0.0	\$27,166	3.6	1.4
Women	45-54	497	23.0	0.0	\$28,089	3.6	1.3
Women	55-64	396	18.3	0.0	\$26,084	3.6	1.2
Women	65-Up	145	6.7	0.0	\$14,532	3.3	1.1
Women	Total	2,165	100.0	45.9	\$21,001	3.4	1.3
Men	00-19	203	8.7	0.0	\$4,465	2.4	1.5
Men	20-24	232	9.9	0.0	\$14,681	2.7	1.5
Men	25-34	450	19.2	0.0	\$32,411	3.4	1.4
Men	35-44	393	16.8	0.0	\$41,454	3.5	1.3
Men	45-54	464	19.8	0.0	\$49,258	3.7	1.2
Men	55-64	431	18.4	0.0	\$46,025	3.6	1.2
Men	65-Up	171	7.3	0.0	\$23,141	3.2	1.2
Men	Total	2,344	100.0	49.7	\$34,914	3.3	1.3
N/A	N/A	203	100.0	0.0	\$13,721	2.2	1.1
N/A	Total	203	100.0	4.3	\$13,721	2.2	1.1
Total	00-19	402	8.5	0.0	\$3,971	2.6	1.5
Total	20-24	436	9.3	0.0	\$12,466	2.8	1.5
Total	25-34	825	17.5	0.0	\$26,007	3.3	1.4
Total	35-44	742	15.7	0.0	\$34,733	3.6	1.3
Total	45-54	961	20.4	0.0	\$38,310	3.6	1.2
Total	55-64	827	17.6	0.0	\$36,477	3.6	1.2
Total	65-Up	316	6.7	0.0	\$19,191	3.2	1.2
Total	N/A	203	4.3	0.0	\$13,721	2.2	1.1
Total	Total	4,712	100.0	100.0	\$27,609	3.3	1.3

Note: Persons worked at any time during the year.

County Determination: Based on county of employment in which the person made the most money in the year.

N/A: Represents persons with demographic data that is unavailable.

N/A = Nonresidents, individuals for whom demographic data are not available.

Source: Demographics of Persons Working in Wyoming by County, Industry, Age, & Gender, 2000-2017.
Research & Planning, Wyoming Department of Workforce Services.

Prepared by M. Moore, Research & Planning, WY DWS, 6/12/18.

Average Earnings by Age and Gender with Place of Work in Washakie County in 2011

Gender	Age Group	Number	Age Percent	Gender Percent	Average Annual Wage	Average Quarters Worked	Average Annual Employers
Women	00-19	184	8.6	0.0	\$3,314	2.6	1.5
Women	20-24	199	9.3	0.0	\$10,520	3.0	1.8
Women	25-34	405	19.0	0.0	\$18,325	3.3	1.5
Women	35-44	328	15.4	0.0	\$27,166	3.5	1.5
Women	45-54	492	23.1	0.0	\$28,820	3.7	1.3
Women	55-64	388	18.2	0.0	\$26,850	3.6	1.3
Women	65-Up	138	6.5	0.0	\$14,275	3.4	1.1
Women	Total	2,134	100.0	45.9	\$21,370	3.4	1.4
Men	00-19	180	7.8	0.0	\$4,914	2.6	1.5
Men	20-24	229	9.9	0.0	\$18,069	2.9	1.6
Men	25-34	430	18.6	0.0	\$34,452	3.3	1.4
Men	35-44	401	17.3	0.0	\$45,702	3.6	1.3
Men	45-54	455	19.7	0.0	\$49,386	3.6	1.2
Men	55-64	431	18.6	0.0	\$48,384	3.5	1.2
Men	65-Up	186	8.0	0.0	\$23,230	3.0	1.2
Men	Total	2,312	100.0	49.7	\$37,114	3.3	1.3
N/A	N/A	205	100.0	0.0	\$15,075	2.2	1.1
N/A	Total	205	100.0	4.4	\$15,075	2.2	1.1
Total	00-19	364	7.8	0.0	\$4,105	2.6	1.5
Total	20-24	428	9.2	0.0	\$14,559	3.0	1.7
Total	25-34	835	18.0	0.0	\$26,630	3.3	1.4
Total	35-44	729	15.7	0.0	\$37,362	3.6	1.4
Total	45-54	947	20.4	0.0	\$38,702	3.6	1.3
Total	55-64	819	17.6	0.0	\$38,182	3.6	1.2
Total	65-Up	324	7.0	0.0	\$19,416	3.2	1.2
Total	N/A	205	4.4	0.0	\$15,075	2.2	1.1
Total	Total	4,651	100.0	100.0	\$28,919	3.3	1.4

Note: Persons worked at any time during the year.

County Determination: Based on county of employment in which the person made the most money in the year.

N/A: Represents persons with demographic data that is unavailable.

N/A = Nonresidents, individuals for whom demographic data are not available.

Source: Demographics of Persons Working in Wyoming by County, Industry, Age, & Gender, 2000-2017.
Research & Planning, Wyoming Department of Workforce Services.

Prepared by M. Moore, Research & Planning, WY DWS, 6/12/18.

Average Earnings by Age and Gender with Place of Work in Washakie County in 2012

Gender	Age Group	Number	Age Percent	Gender Percent	Average Annual Wage	Average Quarters Worked	Average Annual Employers
Women	00-19	194	9.2	0.0	\$3,154	2.5	1.6
Women	20-24	189	9.0	0.0	\$10,642	3.0	1.7
Women	25-34	386	18.3	0.0	\$19,809	3.3	1.5
Women	35-44	333	15.8	0.0	\$26,742	3.5	1.5
Women	45-54	453	21.5	0.0	\$29,803	3.6	1.3
Women	55-64	391	18.5	0.0	\$28,313	3.6	1.3
Women	65-Up	163	7.7	0.0	\$15,018	3.2	1.2
Women	N/A	1	0.0	0.0	\$1,557	1.0	1.0
Women	Total	2,110	100.0	45.6	\$21,893	3.4	1.4
Men	00-19	175	7.6	0.0	\$5,264	2.6	1.5
Men	20-24	194	8.4	0.0	\$18,889	3.0	1.7
Men	25-34	451	19.6	0.0	\$33,592	3.4	1.4
Men	35-44	414	18.0	0.0	\$47,225	3.6	1.4
Men	45-54	458	19.9	0.0	\$50,136	3.5	1.2
Men	55-64	417	18.1	0.0	\$51,102	3.6	1.2
Men	65-Up	189	8.2	0.0	\$24,823	3.2	1.1
Men	Total	2,298	100.0	49.7	\$38,403	3.4	1.4
N/A	N/A	215	100.0	0.0	\$15,444	2.2	1.2
N/A	Total	215	100.0	4.7	\$15,444	2.2	1.2
Total	00-19	369	8.0	0.0	\$4,155	2.6	1.5
Total	20-24	383	8.3	0.0	\$14,819	3.0	1.7
Total	25-34	837	18.1	0.0	\$27,236	3.4	1.5
Total	35-44	747	16.2	0.0	\$38,094	3.5	1.4
Total	45-54	911	19.7	0.0	\$40,025	3.6	1.3
Total	55-64	808	17.5	0.0	\$40,074	3.6	1.3
Total	65-Up	352	7.6	0.0	\$20,283	3.2	1.2
Total	N/A	216	4.7	0.0	\$15,379	2.2	1.2
Total	Total	4,623	100.0	100.0	\$29,800	3.3	1.4

Note: Persons worked at any time during the year.

County Determination: Based on county of employment in which the person made the most money in the year.

N/A: Represents persons with demographic data that is unavailable.

N/A = Nonresidents, individuals for whom demographic data are not available.

Source: Demographics of Persons Working in Wyoming by County, Industry, Age, & Gender, 2000-2017.
Research & Planning, Wyoming Department of Workforce Services.

Prepared by M. Moore, Research & Planning, WY DWS, 6/12/18.

Average Earnings by Age and Gender with Place of Work in Washakie County in 2013

Gender	Age Group	Number	Age Percent	Gender Percent	Average Annual Wage	Average Quarters Worked	Average Annual Employers
Women	00-19	180	8.9	0.0	\$3,692	2.6	1.3
Women	20-24	185	9.1	0.0	\$9,915	3.0	1.6
Women	25-34	352	17.3	0.0	\$21,526	3.4	1.4
Women	35-44	352	17.3	0.0	\$27,347	3.5	1.4
Women	45-54	402	19.8	0.0	\$31,297	3.7	1.3
Women	55-64	395	19.4	0.0	\$29,425	3.7	1.3
Women	65-Up	166	8.2	0.0	\$17,207	3.3	1.1
Women	Total	2,032	100.0	43.6	\$23,013	3.4	1.4
Men	00-19	168	7.3	0.0	\$4,204	2.4	1.4
Men	20-24	193	8.4	0.0	\$18,362	2.9	1.6
Men	25-34	423	18.5	0.0	\$33,497	3.4	1.4
Men	35-44	434	19.0	0.0	\$46,367	3.6	1.3
Men	45-54	447	19.5	0.0	\$50,675	3.6	1.3
Men	55-64	418	18.3	0.0	\$51,875	3.6	1.2
Men	65-Up	204	8.9	0.0	\$26,870	3.1	1.2
Men	Total	2,287	100.0	49.1	\$38,636	3.3	1.3
N/A	N/A	338	100.0	0.0	\$10,085	1.9	1.1
N/A	Total	338	100.0	7.3	\$10,085	1.9	1.1
Total	00-19	348	7.5	0.0	\$3,939	2.5	1.4
Total	20-24	378	8.1	0.0	\$14,228	2.9	1.6
Total	25-34	775	16.6	0.0	\$28,060	3.4	1.4
Total	35-44	786	16.9	0.0	\$37,849	3.6	1.4
Total	45-54	849	18.2	0.0	\$41,500	3.6	1.3
Total	55-64	813	17.5	0.0	\$40,968	3.6	1.2
Total	65-Up	370	7.9	0.0	\$22,535	3.2	1.1
Total	N/A	338	7.3	0.0	\$10,085	1.9	1.1
Total	Total	4,657	100.0	100.0	\$29,747	3.3	1.3

Note: Persons worked at any time during the year.

County Determination: Based on county of employment in which the person made the most money in the year.

N/A: Represents persons with demographic data that is unavailable.

N/A = Nonresidents, individuals for whom demographic data are not available.

Source: Demographics of Persons Working in Wyoming by County, Industry, Age, & Gender, 2000-2017.
Research & Planning, Wyoming Department of Workforce Services.

Prepared by M. Moore, Research & Planning, WY DWS, 6/12/18.

Average Earnings by Age and Gender with Place of Work in Washakie County in 2014

Gender	Age Group	Number	Age Percent	Gender Percent	Average Annual Wage	Average Quarters Worked	Average Annual Employers
Women	00-19	176	8.8	0.0	\$4,219	2.8	1.5
Women	20-24	157	7.8	0.0	\$11,289	3.1	1.8
Women	25-34	353	17.6	0.0	\$23,103	3.4	1.5
Women	35-44	346	17.2	0.0	\$27,602	3.5	1.5
Women	45-54	405	20.1	0.0	\$31,172	3.7	1.4
Women	55-64	406	20.2	0.0	\$29,799	3.6	1.2
Women	65-Up	168	8.4	0.0	\$17,804	3.3	1.1
Women	Total	2,011	100.0	44.9	\$23,836	3.4	1.4
Men	00-19	169	7.5	0.0	\$4,735	2.4	1.4
Men	20-24	176	7.9	0.0	\$18,756	3.0	1.7
Men	25-34	427	19.0	0.0	\$36,561	3.5	1.5
Men	35-44	426	19.0	0.0	\$49,504	3.6	1.3
Men	45-54	397	17.7	0.0	\$54,153	3.7	1.3
Men	55-64	439	19.6	0.0	\$51,905	3.5	1.2
Men	65-Up	208	9.3	0.0	\$29,411	3.2	1.2
Men	Total	2,242	100.0	50.1	\$40,680	3.4	1.3
N/A	N/A	221	100.0	0.0	\$13,119	2.1	1.1
N/A	Total	221	100.0	4.9	\$13,119	2.1	1.1
Total	00-19	345	7.7	0.0	\$4,472	2.6	1.4
Total	20-24	333	7.4	0.0	\$15,236	3.0	1.7
Total	25-34	780	17.4	0.0	\$30,470	3.4	1.5
Total	35-44	772	17.3	0.0	\$39,688	3.6	1.4
Total	45-54	802	17.9	0.0	\$42,548	3.7	1.3
Total	55-64	845	18.9	0.0	\$41,284	3.5	1.2
Total	65-Up	376	8.4	0.0	\$24,225	3.2	1.1
Total	N/A	221	4.9	0.0	\$13,119	2.1	1.1
Total	Total	4,474	100.0	100.0	\$31,748	3.4	1.4

Note: Persons worked at any time during the year.

County Determination: Based on county of employment in which the person made the most money in the year.

N/A: Represents persons with demographic data that is unavailable.

N/A = Nonresidents, individuals for whom demographic data are not available.

Source: Demographics of Persons Working in Wyoming by County, Industry, Age, & Gender, 2000-2017.
Research & Planning, Wyoming Department of Workforce Services.

Prepared by M. Moore, Research & Planning, WY DWS, 6/12/18.

Average Earnings by Age and Gender with Place of Work in Washakie County in 2015

Gender	Age Group	Number	Age Percent	Gender Percent	Average Annual Wage	Average Quarters Worked	Average Annual Employers
Women	00-19	173	8.7	0.0	\$3,704	2.6	1.5
Women	20-24	162	8.2	0.0	\$12,737	3.2	1.9
Women	25-34	337	17.0	0.0	\$23,364	3.4	1.5
Women	35-44	384	19.3	0.0	\$28,339	3.5	1.5
Women	45-54	371	18.7	0.0	\$32,416	3.7	1.3
Women	55-64	379	19.1	0.0	\$31,101	3.7	1.2
Women	65-Up	178	9.0	0.0	\$17,611	3.3	1.1
Women	N/A	1	0.1	0.0	\$2,269	1.0	1.0
Women	Total	1,985	100.0	44.2	\$24,388	3.4	1.4
Men	00-19	178	7.8	0.0	\$4,824	2.4	1.4
Men	20-24	167	7.4	0.0	\$16,846	2.9	1.7
Men	25-34	429	18.9	0.0	\$33,973	3.4	1.5
Men	35-44	426	18.8	0.0	\$46,843	3.6	1.3
Men	45-54	426	18.8	0.0	\$49,183	3.6	1.3
Men	55-64	428	18.9	0.0	\$57,499	3.6	1.2
Men	65-Up	215	9.5	0.0	\$28,013	3.1	1.2
Men	Total	2,269	100.0	50.6	\$39,571	3.4	1.3
N/A	N/A	232	100.0	0.0	\$14,496	2.2	1.1
N/A	Total	232	100.0	5.2	\$14,496	2.2	1.1
Total	00-19	351	7.8	0.0	\$4,272	2.5	1.4
Total	20-24	329	7.3	0.0	\$14,823	3.1	1.8
Total	25-34	766	17.1	0.0	\$29,306	3.4	1.5
Total	35-44	810	18.1	0.0	\$38,071	3.6	1.4
Total	45-54	797	17.8	0.0	\$41,378	3.7	1.3
Total	55-64	807	18.0	0.0	\$45,102	3.6	1.2
Total	65-Up	393	8.8	0.0	\$23,301	3.2	1.2
Total	N/A	233	5.2	0.0	\$14,444	2.2	1.1
Total	Total	4,486	100.0	100.0	\$31,556	3.3	1.4

Note: Persons worked at any time during the year.

County Determination: Based on county of employment in which the person made the most money in the year.

N/A: Represents persons with demographic data that is unavailable.

N/A = Nonresidents, individuals for whom demographic data are not available.

Source: Demographics of Persons Working in Wyoming by County, Industry, Age, & Gender, 2000-2017.

Research & Planning, Wyoming Department of Workforce Services.

Prepared by M. Moore, Research & Planning, WY DWS, 6/12/18.

Average Earnings by Age and Gender with Place of Work in Washakie County in 2016

Gender	Age Group	Number	Age Percent	Gender Percent	Average Annual Wage	Average Quarters Worked	Average Annual Employers
Women	00-19	177	8.9	0.0	\$3,495	2.5	1.5
Women	20-24	160	8.1	0.0	\$12,465	3.1	1.7
Women	25-34	340	17.1	0.0	\$23,297	3.4	1.5
Women	35-44	370	18.6	0.0	\$29,186	3.6	1.4
Women	45-54	372	18.7	0.0	\$33,093	3.6	1.3
Women	55-64	382	19.2	0.0	\$32,238	3.7	1.1
Women	65-Up	185	9.3	0.0	\$15,737	3.3	1.1
Women	N/A	1	0.1	0.0	\$7,678	1.0	1.0
Women	Total	1,987	100.0	45.1	\$24,599	3.4	1.3
Men	00-19	171	7.8	0.0	\$4,364	2.5	1.4
Men	20-24	161	7.4	0.0	\$13,152	2.8	1.6
Men	25-34	393	18.0	0.0	\$33,455	3.4	1.4
Men	35-44	421	19.3	0.0	\$44,042	3.6	1.3
Men	45-54	407	18.6	0.0	\$49,596	3.7	1.3
Men	55-64	429	19.6	0.0	\$59,343	3.6	1.2
Men	65-Up	202	9.2	0.0	\$26,981	3.1	1.2
Men	N/A	1	0.0	0.0	\$12,640	1.0	1.0
Men	Total	2,185	100.0	49.6	\$39,203	3.4	1.3
N/A	N/A	233	100.0	0.0	\$14,608	2.1	1.1
N/A	Total	233	100.0	5.3	\$14,608	2.1	1.1
Total	00-19	348	7.9	0.0	\$3,922	2.5	1.4
Total	20-24	321	7.3	0.0	\$12,809	2.9	1.7
Total	25-34	733	16.6	0.0	\$28,743	3.4	1.4
Total	35-44	791	18.0	0.0	\$37,093	3.6	1.4
Total	45-54	779	17.7	0.0	\$41,715	3.7	1.3
Total	55-64	811	18.4	0.0	\$46,575	3.7	1.2
Total	65-Up	387	8.8	0.0	\$21,606	3.2	1.1
Total	N/A	235	5.3	0.0	\$14,571	2.1	1.1
Total	Total	4,405	100.0	100.0	\$31,315	3.3	1.3

Note: Persons worked at any time during the year.

County Determination: Based on county of employment in which the person made the most money in the year.

N/A: Represents persons with demographic data that is unavailable.

N/A = Nonresidents, individuals for whom demographic data are not available.

Source: Demographics of Persons Working in Wyoming by County, Industry, Age, & Gender, 2000-2017.
Research & Planning, Wyoming Department of Workforce Services.

Prepared by M. Moore, Research & Planning, WY DWS, 6/12/18.

Average Earnings by Age and Gender with Place of Work in Washakie County in 2017

Gender	Age Group	Number	Age Percent	Gender Percent	Average Annual Wage	Average Quarters Worked	Average Annual Employers
Women	00-19	144	7.5	0.0	\$4,403	2.7	1.5
Women	20-24	153	8.0	0.0	\$12,300	3.1	1.8
Women	25-34	316	16.4	0.0	\$24,392	3.5	1.4
Women	35-44	364	18.9	0.0	\$30,327	3.6	1.4
Women	45-54	384	20.0	0.0	\$32,728	3.6	1.3
Women	55-64	378	19.7	0.0	\$33,652	3.7	1.2
Women	65-Up	182	9.5	0.0	\$16,659	3.4	1.1
Women	Total	1,921	100.0	44.8	\$25,811	3.5	1.4
Men	00-19	171	8.1	0.0	\$5,145	2.7	1.4
Men	20-24	153	7.2	0.0	\$15,558	2.9	1.8
Men	25-34	363	17.2	0.0	\$36,764	3.5	1.5
Men	35-44	388	18.4	0.0	\$46,489	3.6	1.3
Men	45-54	397	18.8	0.0	\$51,514	3.7	1.3
Men	55-64	427	20.2	0.0	\$58,105	3.6	1.2
Men	65-Up	212	10.0	0.0	\$30,553	3.2	1.2
Men	N/A	1	0.0	0.0	\$569	1.0	1.0
Men	Total	2,112	100.0	49.2	\$40,901	3.4	1.3
N/A	N/A	258	100.0	0.0	\$13,377	2.1	1.1
N/A	Total	258	100.0	6.0	\$13,377	2.1	1.1
Total	00-19	315	7.3	0.0	\$4,806	2.7	1.4
Total	20-24	306	7.1	0.0	\$13,929	3.0	1.8
Total	25-34	679	15.8	0.0	\$31,006	3.5	1.5
Total	35-44	752	17.5	0.0	\$38,666	3.6	1.4
Total	45-54	781	18.2	0.0	\$42,277	3.7	1.3
Total	55-64	805	18.8	0.0	\$46,623	3.6	1.2
Total	65-Up	394	9.2	0.0	\$24,135	3.3	1.2
Total	N/A	259	6.0	0.0	\$13,328	2.1	1.1
Total	Total	4,291	100.0	100.0	\$32,491	3.4	1.3

Note: Persons worked at any time during the year.

County Determination: Based on county of employment in which the person made the most money in the year.

N/A: Represents persons with demographic data that is unavailable.

N/A = Nonresidents, individuals for whom demographic data are not available.

Source: Demographics of Persons Working in Wyoming by County, Industry, Age, & Gender, 2000-2017.
Research & Planning, Wyoming Department of Workforce Services.

Prepared by M. Moore, Research & Planning, WY DWS, 6/12/18.