

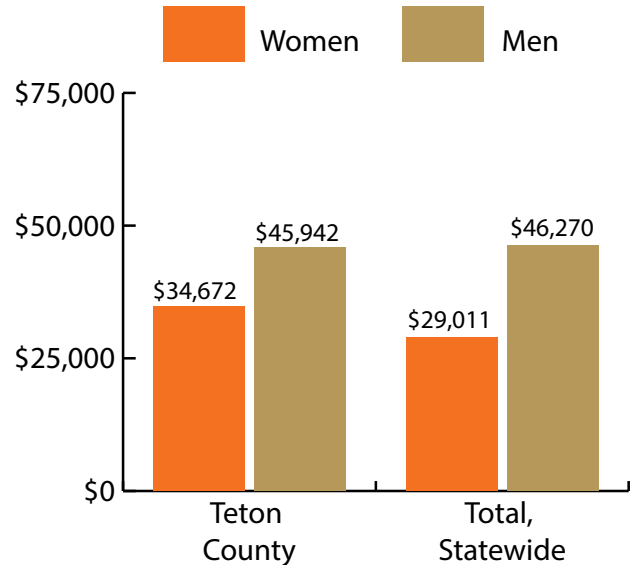
Teton County at a Glance, 2017

Demographics of Persons Working in Wyoming by County, Industry, Age, & Gender, 2000-2017

Table: Total Number of Persons Working in Teton County, WY, at Any Time by Gender and Age, 2016-2017

Gender	2016	2017	Change	
			N	%
Women	8,459	8,156	-303	-3.6
Men	10,788	10,327	-461	-4.3
Nonresidents	10,335	11,503	1,168	11.3
Total	29,582	29,986	404	1.4

Age	2016	2017	Change	
			N	%
00-19	973	843	-130	-13.4
20-24	1,900	1,685	-215	-11.3
25-34	5,370	4,967	-403	-7.5
35-44	4,076	4,031	-45	-1.1
45-54	3,209	3,199	-10	-0.3
55-64	2,619	2,594	-25	-1.0
65-Up	1,093	1,159	66	6.0
Nonresidents	10,342	11,508	1,166	11.3
Total	29,582	29,986	404	1.4



Women's Wages as % of Men's Wages

Teton County: 75.5%

Total: 62.7%

Figure: Average Annual Wages by Gender, 2017

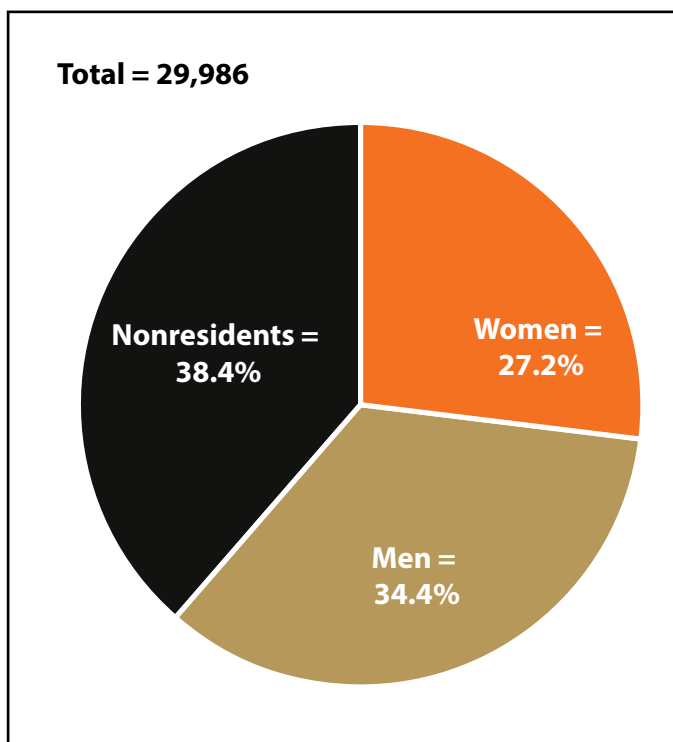


Figure: Persons Working by Gender, 2017

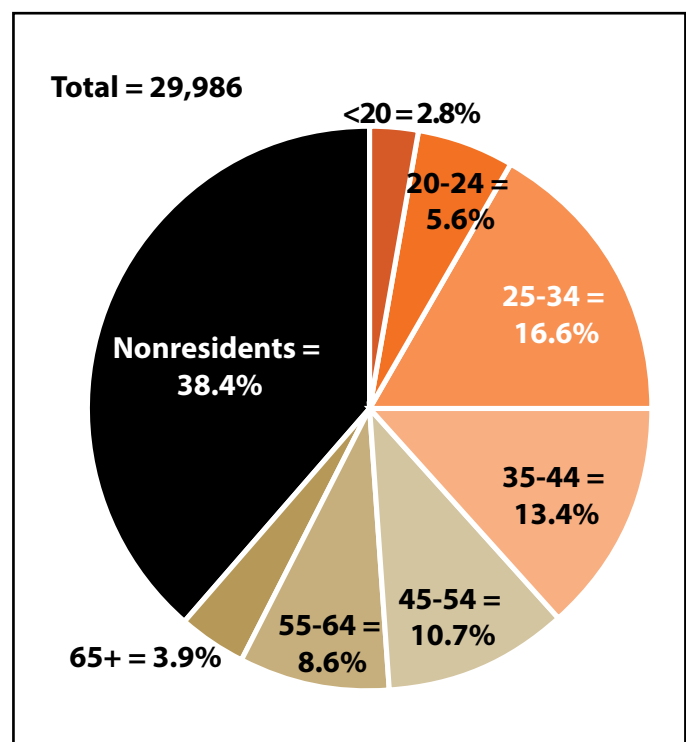


Figure: Persons Working by Age, 2017

Note: Nonresidents are individuals for whom demographic data are not available.

Source: Demographics of Persons Working in Wyoming by County, Industry, Age, & Gender, 2000-2017. Research & Planning, Wyoming Department of Workforce Services. Prepared by M. Moore, Research & Planning, WY DWS, 6/12/18.

Persons Working in Teton County by Gender and Age, 2000-2017

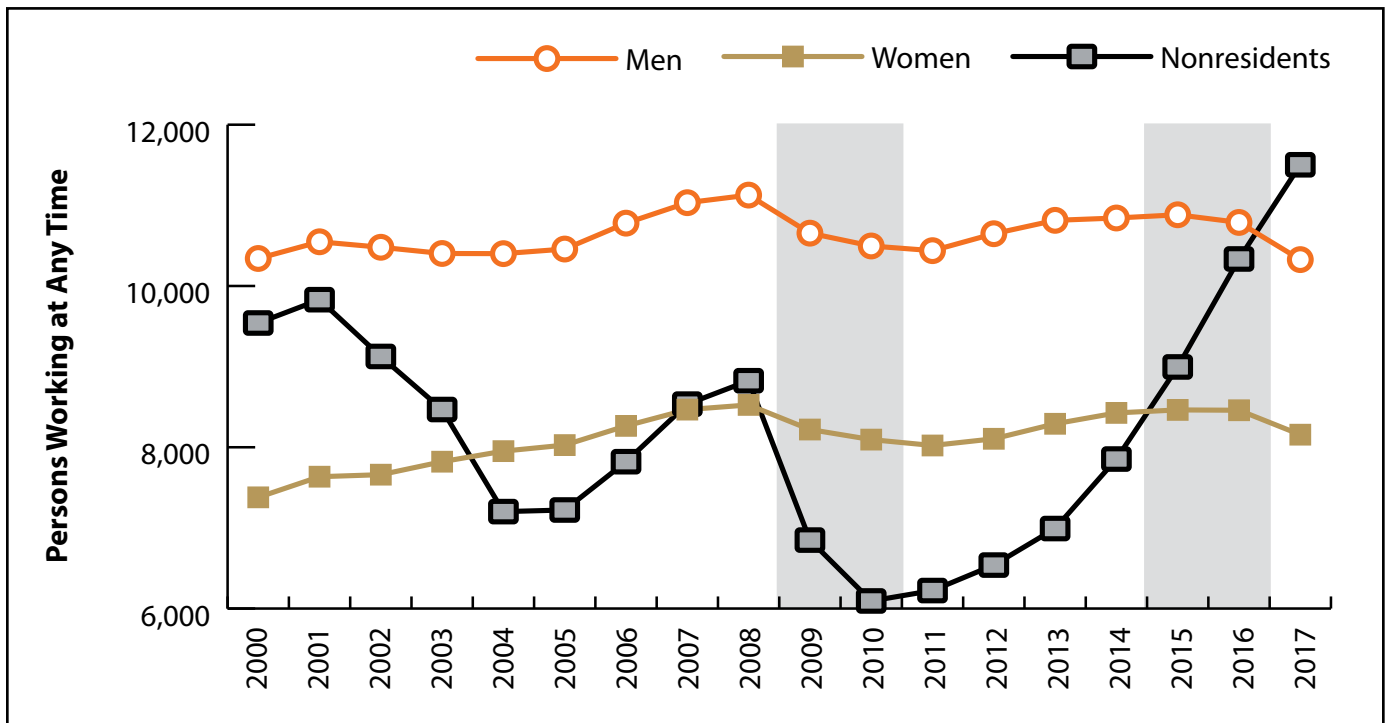


Figure: Persons Working in Teton County at Any Time by Gender, 2000-2017

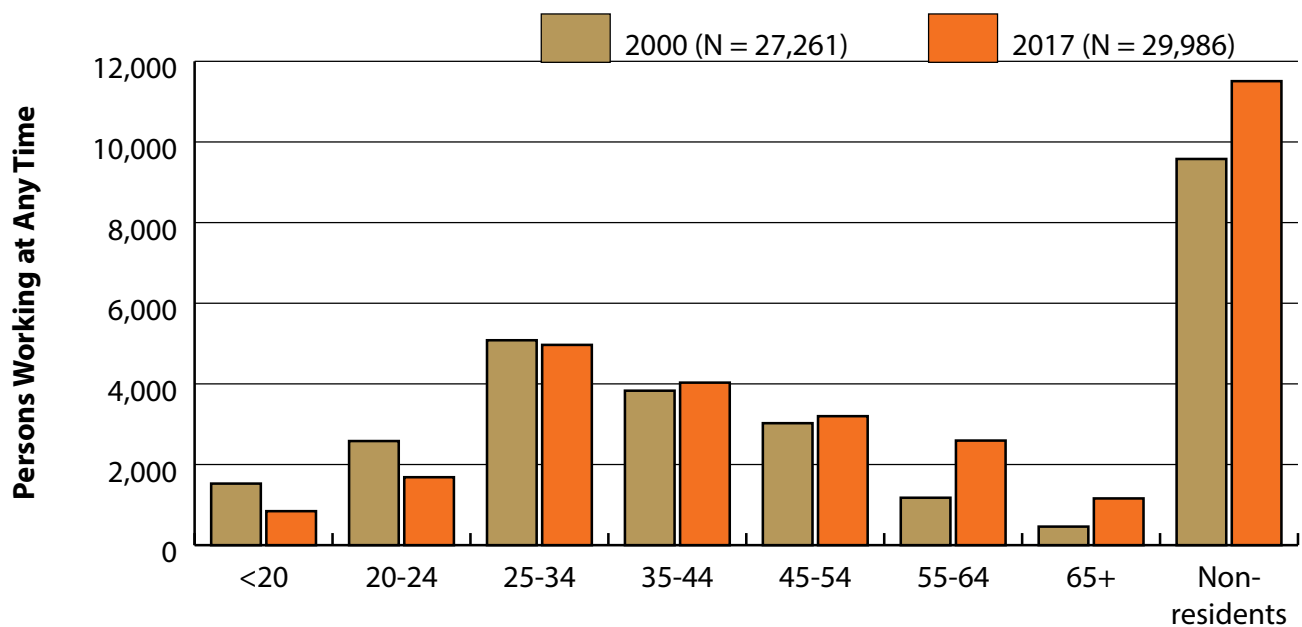


Figure: Persons Working in Teton County at Any Time by Age, 2000-2017

Note: Nonresidents are individuals for whom demographic data are not available.
 Shaded areas indicate periods of economic downturn: 2009Q1-2010Q1 and 2015Q2-2016Q4.
 Source: Demographics of Persons Working in Wyoming by County, Industry, Age, & Gender, 2000-2017. Research & Planning, Wyoming Department of Workforce Services. Prepared by M. Moore, Research & Planning, WY DWS, 6/12/18.

Wages for Persons Working in Teton County by Gender, 2000-2017

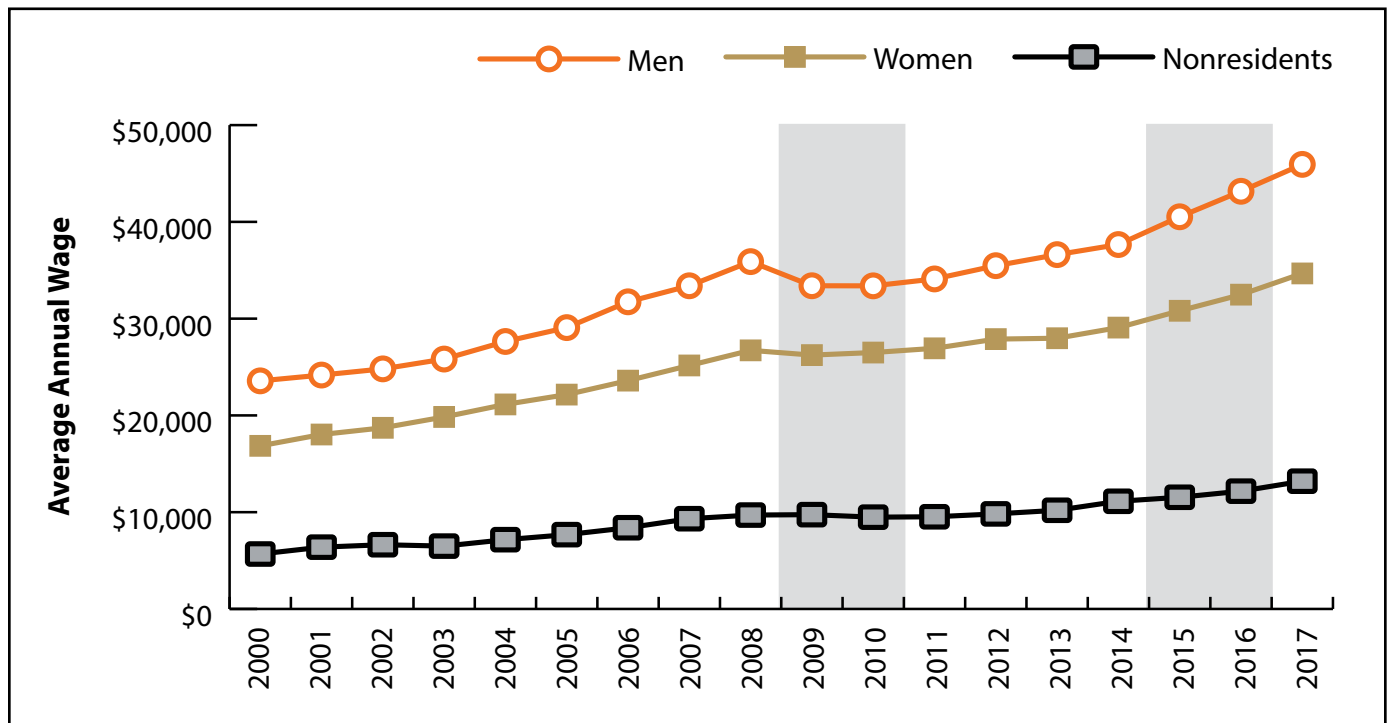


Figure: Average Annual Wage for Persons Working in Teton County at Any Time by Age, 2000-2017

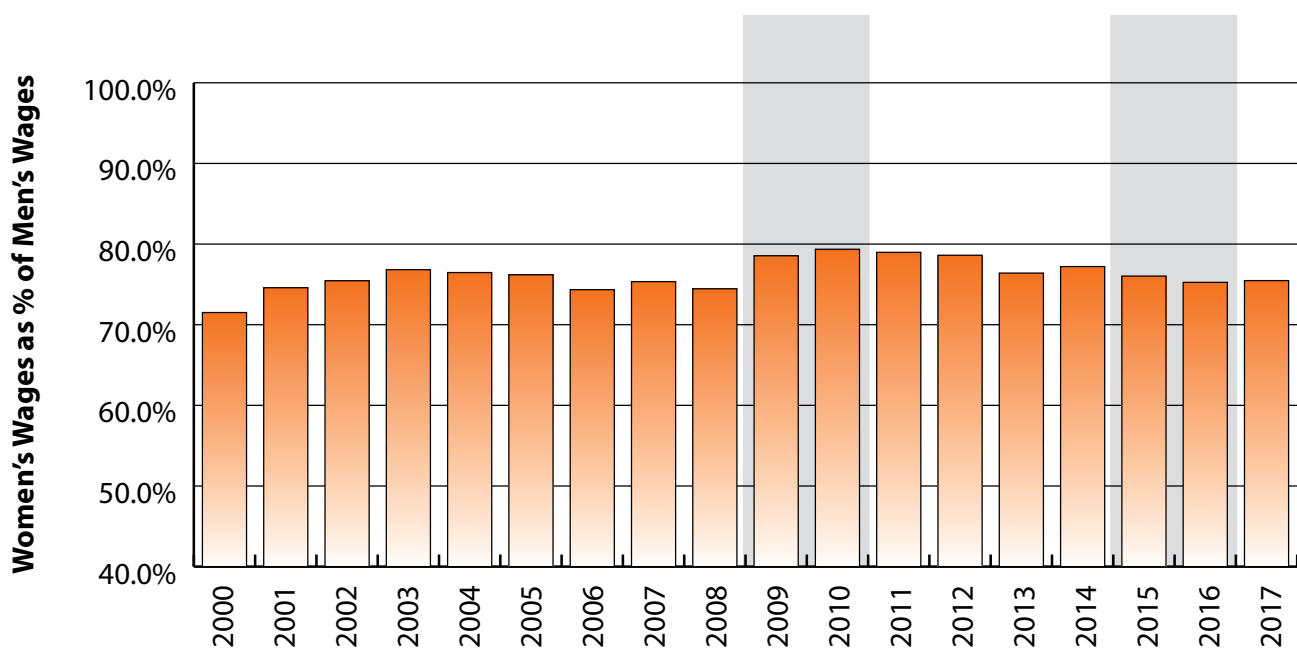


Figure: Women's Average Annual Wages as a Percent of Men's Wages for Persons Working in Teton County at Any Time by Age, 2000-2017

Note: Nonresidents are individuals for whom demographic data are not available.
 Shaded areas indicate periods of economic downturn: 2009Q1-2010Q1 and 2015Q2-2016Q4.
 Source: Demographics of Persons Working in Wyoming by County, Industry, Age, & Gender, 2000-2017. Research & Planning, Wyoming Department of Workforce Services. Prepared by M. Moore, Research & Planning, WY DWS, 6/12/18.

Average Earnings by Age and Gender with Place of Work in Teton County in 2000

Gender	Age Group	Number	Age Percent	Gender Percent	Average Annual Wage	Average Quarters Worked	Average Annual Employers
Women	00-19	683	9.3	0.0	\$3,719	2.4	1.5
Women	20-24	1,141	15.5	0.0	\$8,246	2.7	1.9
Women	25-34	1,920	26.0	0.0	\$17,258	3.2	1.8
Women	35-44	1,592	21.6	0.0	\$22,438	3.3	1.5
Women	45-54	1,332	18.1	0.0	\$23,372	3.4	1.4
Women	55-64	503	6.8	0.0	\$20,721	3.2	1.2
Women	65-Up	192	2.6	0.0	\$9,826	2.8	1.1
Women	N/A	16	0.2	0.0	\$7,807	2.2	1.3
Women	Total	7,379	100.0	27.1	\$16,855	3.1	1.6
Men	00-19	844	8.2	0.0	\$4,300	2.4	1.5
Men	20-24	1,441	13.9	0.0	\$9,777	2.6	1.9
Men	25-34	3,162	30.6	0.0	\$18,762	3.1	1.8
Men	35-44	2,239	21.7	0.0	\$29,772	3.2	1.5
Men	45-54	1,693	16.4	0.0	\$37,204	3.3	1.4
Men	55-64	673	6.5	0.0	\$44,124	3.2	1.3
Men	65-Up	268	2.6	0.0	\$26,656	2.8	1.2
Men	N/A	21	0.2	0.0	\$9,975	2.1	1.2
Men	Total	10,341	100.0	37.9	\$23,570	3.0	1.6
N/A	N/A	9,541	100.0	0.0	\$5,677	1.9	1.3
N/A	Total	9,541	100.0	35.0	\$5,677	1.9	1.3
Total	00-19	1,527	5.6	0.0	\$4,040	2.4	1.5
Total	20-24	2,582	9.5	0.0	\$9,100	2.6	1.9
Total	25-34	5,082	18.6	0.0	\$18,194	3.2	1.8
Total	35-44	3,831	14.1	0.0	\$26,724	3.3	1.5
Total	45-54	3,025	11.1	0.0	\$31,114	3.3	1.4
Total	55-64	1,176	4.3	0.0	\$34,114	3.2	1.3
Total	65-Up	460	1.7	0.0	\$19,632	2.8	1.1
Total	N/A	9,578	35.1	0.0	\$5,690	1.9	1.3
Total	Total	27,261	100.0	100.0	\$15,490	2.7	1.5

Note: Persons worked at any time during the year.

County Determination: Based on county of employment in which the person made the most money in the year.

N/A: Represents persons with demographic data that is unavailable.

N/A = Nonresidents, individuals for whom demographic data are not available.

Source: Demographics of Persons Working in Wyoming by County, Industry, Age, & Gender, 2000-2017.

Research & Planning, Wyoming Department of Workforce Services.

Prepared by M. Moore, Research & Planning, WY DWS, 6/12/18.

Average Earnings by Age and Gender with Place of Work in Teton County in 2001

Gender	Age Group	Number	Age Percent	Gender Percent	Average Annual Wage	Average Quarters Worked	Average Annual Employers
Women	00-19	625	8.2	0.0	\$4,374	2.3	1.5
Women	20-24	1,239	16.2	0.0	\$8,993	2.7	1.8
Women	25-34	2,007	26.3	0.0	\$18,275	3.1	1.7
Women	35-44	1,579	20.7	0.0	\$24,101	3.4	1.5
Women	45-54	1,395	18.3	0.0	\$25,057	3.4	1.4
Women	55-64	570	7.5	0.0	\$20,405	3.2	1.2
Women	65-Up	207	2.7	0.0	\$11,118	2.9	1.1
Women	N/A	13	0.2	0.0	\$10,888	2.5	1.2
Women	Total	7,635	100.0	27.3	\$18,027	3.1	1.5
Men	00-19	751	7.1	0.0	\$4,650	2.4	1.5
Men	20-24	1,508	14.3	0.0	\$9,823	2.6	1.8
Men	25-34	3,255	30.9	0.0	\$19,223	3.1	1.7
Men	35-44	2,224	21.1	0.0	\$30,442	3.2	1.4
Men	45-54	1,764	16.7	0.0	\$37,946	3.2	1.3
Men	55-64	737	7.0	0.0	\$41,235	3.2	1.2
Men	65-Up	289	2.7	0.0	\$30,518	2.7	1.1
Men	N/A	20	0.2	0.0	\$10,899	2.3	1.2
Men	Total	10,548	100.0	37.7	\$24,170	3.0	1.5
N/A	N/A	9,830	100.0	0.0	\$6,386	1.9	1.2
N/A	Total	9,830	100.0	35.1	\$6,386	1.9	1.2
Total	00-19	1,376	4.9	0.0	\$4,525	2.4	1.5
Total	20-24	2,747	9.8	0.0	\$9,449	2.6	1.8
Total	25-34	5,262	18.8	0.0	\$18,862	3.1	1.7
Total	35-44	3,803	13.6	0.0	\$27,809	3.3	1.4
Total	45-54	3,159	11.3	0.0	\$32,254	3.3	1.3
Total	55-64	1,307	4.7	0.0	\$32,151	3.2	1.2
Total	65-Up	496	1.8	0.0	\$22,422	2.7	1.1
Total	N/A	9,863	35.2	0.0	\$6,401	1.9	1.2
Total	Total	28,013	100.0	100.0	\$16,255	2.6	1.4

Note: Persons worked at any time during the year.

County Determination: Based on county of employment in which the person made the most money in the year.

N/A: Represents persons with demographic data that is unavailable.

N/A = Nonresidents, individuals for whom demographic data are not available.

Source: Demographics of Persons Working in Wyoming by County, Industry, Age, & Gender, 2000-2017.

Research & Planning, Wyoming Department of Workforce Services.

Prepared by M. Moore, Research & Planning, WY DWS, 6/12/18.

Average Earnings by Age and Gender with Place of Work in Teton County in 2002

Gender	Age Group	Number	Age Percent	Gender Percent	Average Annual Wage	Average Quarters Worked	Average Annual Employers
Women	00-19	561	7.3	0.0	\$4,189	2.4	1.5
Women	20-24	1,234	16.1	0.0	\$9,159	2.7	1.7
Women	25-34	2,042	26.7	0.0	\$18,618	3.2	1.6
Women	35-44	1,540	20.1	0.0	\$25,018	3.4	1.4
Women	45-54	1,404	18.3	0.0	\$25,593	3.4	1.3
Women	55-64	647	8.4	0.0	\$21,888	3.2	1.2
Women	65-Up	220	2.9	0.0	\$13,344	2.9	1.1
Women	N/A	12	0.2	0.0	\$12,609	2.4	1.3
Women	Total	7,660	100.0	28.1	\$18,718	3.1	1.5
Men	00-19	662	6.3	0.0	\$4,152	2.3	1.4
Men	20-24	1,465	14.0	0.0	\$10,523	2.6	1.7
Men	25-34	3,219	30.7	0.0	\$19,910	3.1	1.6
Men	35-44	2,191	20.9	0.0	\$30,052	3.2	1.4
Men	45-54	1,824	17.4	0.0	\$37,606	3.2	1.3
Men	55-64	812	7.7	0.0	\$39,800	3.1	1.2
Men	65-Up	291	2.8	0.0	\$36,752	2.8	1.2
Men	N/A	16	0.2	0.0	\$17,965	2.5	1.3
Men	Total	10,480	100.0	38.4	\$24,808	3.0	1.5
N/A	N/A	9,126	100.0	0.0	\$6,636	1.9	1.2
N/A	Total	9,126	100.0	33.5	\$6,636	1.9	1.2
Total	00-19	1,223	4.5	0.0	\$4,169	2.3	1.5
Total	20-24	2,699	9.9	0.0	\$9,899	2.6	1.7
Total	25-34	5,261	19.3	0.0	\$19,409	3.1	1.6
Total	35-44	3,731	13.7	0.0	\$27,974	3.3	1.4
Total	45-54	3,228	11.8	0.0	\$32,381	3.3	1.3
Total	55-64	1,459	5.4	0.0	\$31,857	3.1	1.2
Total	65-Up	511	1.9	0.0	\$26,674	2.8	1.1
Total	N/A	9,154	33.6	0.0	\$6,663	1.9	1.2
Total	Total	27,266	100.0	100.0	\$17,015	2.7	1.4

Note: Persons worked at any time during the year.

County Determination: Based on county of employment in which the person made the most money in the year.

N/A: Represents persons with demographic data that is unavailable.

N/A = Nonresidents, individuals for whom demographic data are not available.

Source: Demographics of Persons Working in Wyoming by County, Industry, Age, & Gender, 2000-2017.

Research & Planning, Wyoming Department of Workforce Services.

Prepared by M. Moore, Research & Planning, WY DWS, 6/12/18.

Average Earnings by Age and Gender with Place of Work in Teton County in 2003

Gender	Age Group	Number	Age Percent	Gender Percent	Average Annual Wage	Average Quarters Worked	Average Annual Employers
Women	00-19	558	7.1	0.0	\$3,943	2.3	1.5
Women	20-24	1,203	15.4	0.0	\$9,250	2.7	1.7
Women	25-34	2,145	27.4	0.0	\$19,082	3.2	1.7
Women	35-44	1,508	19.3	0.0	\$25,904	3.4	1.4
Women	45-54	1,502	19.2	0.0	\$27,697	3.4	1.3
Women	55-64	679	8.7	0.0	\$24,601	3.3	1.2
Women	65-Up	215	2.7	0.0	\$15,883	3.1	1.1
Women	N/A	11	0.1	0.0	\$10,717	2.1	1.1
Women	Total	7,821	100.0	29.3	\$19,839	3.1	1.5
Men	00-19	649	6.2	0.0	\$4,282	2.2	1.4
Men	20-24	1,455	14.0	0.0	\$10,413	2.6	1.7
Men	25-34	3,199	30.8	0.0	\$20,016	3.1	1.7
Men	35-44	2,169	20.8	0.0	\$29,959	3.2	1.4
Men	45-54	1,761	16.9	0.0	\$40,462	3.3	1.3
Men	55-64	865	8.3	0.0	\$46,257	3.2	1.2
Men	65-Up	294	2.8	0.0	\$35,006	3.0	1.2
Men	N/A	11	0.1	0.0	\$12,925	2.3	1.0
Men	Total	10,403	100.0	39.0	\$25,823	3.0	1.5
N/A	N/A	8,468	100.0	0.0	\$6,494	1.9	1.2
N/A	Total	8,468	100.0	31.7	\$6,494	1.9	1.2
Total	00-19	1,207	4.5	0.0	\$4,125	2.3	1.4
Total	20-24	2,658	10.0	0.0	\$9,886	2.6	1.7
Total	25-34	5,344	20.0	0.0	\$19,641	3.1	1.7
Total	35-44	3,677	13.8	0.0	\$28,296	3.3	1.4
Total	45-54	3,263	12.2	0.0	\$34,586	3.3	1.3
Total	55-64	1,544	5.8	0.0	\$36,733	3.2	1.2
Total	65-Up	509	1.9	0.0	\$26,929	3.0	1.1
Total	N/A	8,490	31.8	0.0	\$6,508	1.9	1.2
Total	Total	26,692	100.0	100.0	\$17,938	2.7	1.4

Note: Persons worked at any time during the year.

County Determination: Based on county of employment in which the person made the most money in the year.

N/A: Represents persons with demographic data that is unavailable.

N/A = Nonresidents, individuals for whom demographic data are not available.

Source: Demographics of Persons Working in Wyoming by County, Industry, Age, & Gender, 2000-2017.

Research & Planning, Wyoming Department of Workforce Services.

Prepared by M. Moore, Research & Planning, WY DWS, 6/12/18.

Average Earnings by Age and Gender with Place of Work in Teton County in 2004

Gender	Age Group	Number	Age Percent	Gender Percent	Average Annual Wage	Average Quarters Worked	Average Annual Employers
Women	00-19	547	6.9	0.0	\$4,120	2.4	1.5
Women	20-24	1,182	14.9	0.0	\$9,991	2.7	1.8
Women	25-34	2,181	27.4	0.0	\$20,321	3.3	1.7
Women	35-44	1,530	19.2	0.0	\$27,430	3.4	1.4
Women	45-54	1,516	19.1	0.0	\$29,226	3.5	1.3
Women	55-64	761	9.6	0.0	\$26,313	3.3	1.2
Women	65-Up	229	2.9	0.0	\$14,571	2.9	1.1
Women	N/A	6	0.1	0.0	\$8,348	2.2	1.3
Women	Total	7,952	100.0	31.1	\$21,136	3.2	1.5
Men	00-19	643	6.2	0.0	\$4,059	2.4	1.4
Men	20-24	1,386	13.3	0.0	\$10,818	2.6	1.7
Men	25-34	3,168	30.5	0.0	\$20,887	3.1	1.7
Men	35-44	2,144	20.6	0.0	\$31,927	3.3	1.4
Men	45-54	1,822	17.5	0.0	\$41,475	3.3	1.3
Men	55-64	927	8.9	0.0	\$51,090	3.3	1.2
Men	65-Up	304	2.9	0.0	\$40,300	3.0	1.1
Men	N/A	7	0.1	0.0	\$10,608	2.1	1.1
Men	Total	10,401	100.0	40.7	\$27,640	3.1	1.5
N/A	N/A	7,202	100.0	0.0	\$7,158	2.1	1.2
N/A	Total	7,202	100.0	28.2	\$7,158	2.1	1.2
Total	00-19	1,190	4.7	0.0	\$4,087	2.4	1.5
Total	20-24	2,568	10.0	0.0	\$10,438	2.7	1.7
Total	25-34	5,349	20.9	0.0	\$20,656	3.2	1.7
Total	35-44	3,674	14.4	0.0	\$30,054	3.3	1.4
Total	45-54	3,338	13.1	0.0	\$35,912	3.4	1.3
Total	55-64	1,688	6.6	0.0	\$39,919	3.3	1.2
Total	65-Up	533	2.1	0.0	\$29,246	2.9	1.1
Total	N/A	7,215	28.2	0.0	\$7,162	2.1	1.2
Total	Total	25,555	100.0	100.0	\$19,844	2.8	1.4

Note: Persons worked at any time during the year.

County Determination: Based on county of employment in which the person made the most money in the year.

N/A: Represents persons with demographic data that is unavailable.

N/A = Nonresidents, individuals for whom demographic data are not available.

Source: Demographics of Persons Working in Wyoming by County, Industry, Age, & Gender, 2000-2017.
Research & Planning, Wyoming Department of Workforce Services.

Prepared by M. Moore, Research & Planning, WY DWS, 6/12/18.

Average Earnings by Age and Gender with Place of Work in Teton County in 2005

Gender	Age Group	Number	Age Percent	Gender Percent	Average Annual Wage	Average Quarters Worked	Average Annual Employers
Women	00-19	520	6.5	0.0	\$4,508	2.5	1.6
Women	20-24	1,185	14.8	0.0	\$10,583	2.7	1.7
Women	25-34	2,181	27.2	0.0	\$21,477	3.3	1.7
Women	35-44	1,566	19.5	0.0	\$27,905	3.4	1.4
Women	45-54	1,541	19.2	0.0	\$30,010	3.4	1.3
Women	55-64	783	9.8	0.0	\$27,866	3.4	1.2
Women	65-Up	248	3.1	0.0	\$17,222	2.9	1.1
Women	N/A	3	0.0	0.0	\$15,460	2.0	1.3
Women	Total	8,027	100.0	31.2	\$22,151	3.2	1.5
Men	00-19	657	6.3	0.0	\$4,268	2.3	1.5
Men	20-24	1,351	12.9	0.0	\$11,276	2.6	1.7
Men	25-34	3,140	30.0	0.0	\$22,694	3.2	1.7
Men	35-44	2,145	20.5	0.0	\$34,967	3.3	1.4
Men	45-54	1,817	17.4	0.0	\$42,048	3.3	1.3
Men	55-64	1,006	9.6	0.0	\$46,491	3.2	1.2
Men	65-Up	334	3.2	0.0	\$49,361	2.9	1.1
Men	N/A	8	0.1	0.0	\$11,581	2.3	1.0
Men	Total	10,458	100.0	40.7	\$29,073	3.1	1.5
N/A	N/A	7,222	100.0	0.0	\$7,678	2.1	1.3
N/A	Total	7,222	100.0	28.1	\$7,678	2.1	1.3
Total	00-19	1,177	4.6	0.0	\$4,374	2.4	1.5
Total	20-24	2,536	9.9	0.0	\$10,952	2.7	1.7
Total	25-34	5,321	20.7	0.0	\$22,195	3.2	1.7
Total	35-44	3,711	14.4	0.0	\$31,987	3.4	1.4
Total	45-54	3,358	13.1	0.0	\$36,524	3.4	1.3
Total	55-64	1,789	7.0	0.0	\$38,340	3.3	1.2
Total	65-Up	582	2.3	0.0	\$35,666	2.9	1.1
Total	N/A	7,233	28.1	0.0	\$7,685	2.1	1.3
Total	Total	25,707	100.0	100.0	\$20,901	2.9	1.4

Note: Persons worked at any time during the year.

County Determination: Based on county of employment in which the person made the most money in the year.

N/A: Represents persons with demographic data that is unavailable.

N/A = Nonresidents, individuals for whom demographic data are not available.

Source: Demographics of Persons Working in Wyoming by County, Industry, Age, & Gender, 2000-2017.
Research & Planning, Wyoming Department of Workforce Services.

Prepared by M. Moore, Research & Planning, WY DWS, 6/12/18.

Average Earnings by Age and Gender with Place of Work in Teton County in 2006

Gender	Age Group	Number	Age Percent	Gender Percent	Average Annual Wage	Average Quarters Worked	Average Annual Employers
Women	00-19	548	6.6	0.0	\$4,579	2.5	1.6
Women	20-24	1,123	13.6	0.0	\$10,994	2.7	1.8
Women	25-34	2,354	28.5	0.0	\$22,329	3.2	1.7
Women	35-44	1,578	19.1	0.0	\$30,752	3.4	1.5
Women	45-54	1,557	18.8	0.0	\$31,842	3.4	1.4
Women	55-64	868	10.5	0.0	\$28,970	3.3	1.3
Women	65-Up	233	2.8	0.0	\$18,501	3.0	1.1
Women	N/A	4	0.0	0.0	\$9,032	2.3	1.3
Women	Total	8,265	100.0	30.8	\$23,595	3.2	1.5
Men	00-19	660	6.1	0.0	\$4,875	2.4	1.5
Men	20-24	1,362	12.6	0.0	\$12,037	2.6	1.8
Men	25-34	3,238	30.0	0.0	\$24,132	3.1	1.6
Men	35-44	2,251	20.9	0.0	\$36,666	3.3	1.5
Men	45-54	1,842	17.1	0.0	\$45,906	3.3	1.3
Men	55-64	1,074	10.0	0.0	\$54,361	3.4	1.2
Men	65-Up	343	3.2	0.0	\$54,890	2.9	1.1
Men	N/A	9	0.1	0.0	\$6,616	1.6	1.1
Men	Total	10,779	100.0	40.1	\$31,739	3.1	1.5
N/A	N/A	7,821	100.0	0.0	\$8,392	2.1	1.3
N/A	Total	7,821	100.0	29.1	\$8,392	2.1	1.3
Total	00-19	1,208	4.5	0.0	\$4,741	2.5	1.6
Total	20-24	2,485	9.2	0.0	\$11,566	2.6	1.8
Total	25-34	5,592	20.8	0.0	\$23,373	3.2	1.7
Total	35-44	3,829	14.3	0.0	\$34,229	3.3	1.5
Total	45-54	3,399	12.7	0.0	\$39,464	3.4	1.4
Total	55-64	1,942	7.2	0.0	\$43,012	3.3	1.2
Total	65-Up	576	2.1	0.0	\$40,170	2.9	1.1
Total	N/A	7,834	29.2	0.0	\$8,390	2.1	1.3
Total	Total	26,865	100.0	100.0	\$22,437	2.8	1.4

Note: Persons worked at any time during the year.

County Determination: Based on county of employment in which the person made the most money in the year.

N/A: Represents persons with demographic data that is unavailable.

N/A = Nonresidents, individuals for whom demographic data are not available.

Source: Demographics of Persons Working in Wyoming by County, Industry, Age, & Gender, 2000-2017.
Research & Planning, Wyoming Department of Workforce Services.

Prepared by M. Moore, Research & Planning, WY DWS, 6/12/18.

Average Earnings by Age and Gender with Place of Work in Teton County in 2007

Gender	Age Group	Number	Age Percent	Gender Percent	Average Annual Wage	Average Quarters Worked	Average Annual Employers
Women	00-19	527	6.2	0.0	\$5,270	2.5	1.6
Women	20-24	1,208	14.3	0.0	\$11,734	2.7	1.8
Women	25-34	2,451	28.9	0.0	\$23,848	3.2	1.7
Women	35-44	1,599	18.9	0.0	\$32,858	3.4	1.4
Women	45-54	1,520	18.0	0.0	\$34,023	3.4	1.3
Women	55-64	922	10.9	0.0	\$31,175	3.4	1.3
Women	65-Up	233	2.8	0.0	\$19,734	3.0	1.1
Women	N/A	7	0.1	0.0	\$7,404	1.6	1.0
Women	Total	8,467	100.0	30.2	\$25,162	3.2	1.5
Men	00-19	650	5.9	0.0	\$4,810	2.4	1.5
Men	20-24	1,398	12.7	0.0	\$12,789	2.6	1.7
Men	25-34	3,220	29.2	0.0	\$26,139	3.1	1.6
Men	35-44	2,347	21.3	0.0	\$39,935	3.3	1.5
Men	45-54	1,859	16.8	0.0	\$46,774	3.3	1.3
Men	55-64	1,196	10.8	0.0	\$52,810	3.3	1.2
Men	65-Up	356	3.2	0.0	\$54,484	2.9	1.1
Men	N/A	7	0.1	0.0	\$7,150	2.1	1.0
Men	Total	11,033	100.0	39.4	\$33,396	3.1	1.5
N/A	N/A	8,535	100.0	0.0	\$9,325	2.1	1.3
N/A	Total	8,535	100.0	30.4	\$9,325	2.1	1.3
Total	00-19	1,177	4.2	0.0	\$5,016	2.4	1.5
Total	20-24	2,606	9.3	0.0	\$12,300	2.6	1.7
Total	25-34	5,671	20.2	0.0	\$25,148	3.2	1.6
Total	35-44	3,946	14.1	0.0	\$37,067	3.3	1.5
Total	45-54	3,379	12.1	0.0	\$41,038	3.4	1.3
Total	55-64	2,118	7.6	0.0	\$43,392	3.3	1.2
Total	65-Up	589	2.1	0.0	\$40,738	2.9	1.1
Total	N/A	8,549	30.5	0.0	\$9,322	2.1	1.3
Total	Total	28,035	100.0	100.0	\$23,581	2.8	1.4

Note: Persons worked at any time during the year.

County Determination: Based on county of employment in which the person made the most money in the year.

N/A: Represents persons with demographic data that is unavailable.

N/A = Nonresidents, individuals for whom demographic data are not available.

Source: Demographics of Persons Working in Wyoming by County, Industry, Age, & Gender, 2000-2017.

Research & Planning, Wyoming Department of Workforce Services.

Prepared by M. Moore, Research & Planning, WY DWS, 6/12/18.

Average Earnings by Age and Gender with Place of Work in Teton County in 2008

Gender	Age Group	Number	Age Percent	Gender Percent	Average Annual Wage	Average Quarters Worked	Average Annual Employers
Women	00-19	488	5.7	0.0	\$5,051	2.5	1.6
Women	20-24	1,240	14.5	0.0	\$12,108	2.7	1.7
Women	25-34	2,472	29.0	0.0	\$25,115	3.3	1.7
Women	35-44	1,589	18.6	0.0	\$34,993	3.4	1.4
Women	45-54	1,490	17.5	0.0	\$35,728	3.5	1.3
Women	55-64	975	11.4	0.0	\$34,213	3.4	1.2
Women	65-Up	266	3.1	0.0	\$22,522	3.1	1.1
Women	N/A	5	0.1	0.0	\$13,008	2.2	1.0
Women	Total	8,525	100.0	29.9	\$26,723	3.2	1.5
Men	00-19	578	5.2	0.0	\$5,345	2.4	1.4
Men	20-24	1,384	12.4	0.0	\$13,156	2.6	1.6
Men	25-34	3,323	29.9	0.0	\$27,744	3.2	1.6
Men	35-44	2,401	21.6	0.0	\$43,226	3.3	1.5
Men	45-54	1,804	16.2	0.0	\$50,046	3.3	1.3
Men	55-64	1,238	11.1	0.0	\$56,891	3.3	1.2
Men	65-Up	390	3.5	0.0	\$54,639	3.0	1.1
Men	N/A	9	0.1	0.0	\$8,227	2.1	1.4
Men	Total	11,127	100.0	39.1	\$35,892	3.1	1.5
N/A	N/A	8,825	100.0	0.0	\$9,702	2.2	1.3
N/A	Total	8,825	100.0	31.0	\$9,702	2.2	1.3
Total	00-19	1,066	3.7	0.0	\$5,211	2.4	1.5
Total	20-24	2,624	9.2	0.0	\$12,661	2.7	1.7
Total	25-34	5,795	20.3	0.0	\$26,622	3.2	1.6
Total	35-44	3,990	14.0	0.0	\$39,947	3.4	1.5
Total	45-54	3,294	11.6	0.0	\$43,569	3.4	1.3
Total	55-64	2,213	7.8	0.0	\$46,899	3.4	1.2
Total	65-Up	656	2.3	0.0	\$41,616	3.0	1.1
Total	N/A	8,839	31.0	0.0	\$9,702	2.2	1.3
Total	Total	28,477	100.0	100.0	\$25,031	2.9	1.4

Note: Persons worked at any time during the year.

County Determination: Based on county of employment in which the person made the most money in the year.

N/A: Represents persons with demographic data that is unavailable.

N/A = Nonresidents, individuals for whom demographic data are not available.

Source: Demographics of Persons Working in Wyoming by County, Industry, Age, & Gender, 2000-2017.
Research & Planning, Wyoming Department of Workforce Services.

Prepared by M. Moore, Research & Planning, WY DWS, 6/12/18.

Average Earnings by Age and Gender with Place of Work in Teton County in 2009

Gender	Age Group	Number	Age Percent	Gender Percent	Average Annual Wage	Average Quarters Worked	Average Annual Employers
Women	00-19	406	4.9	0.0	\$4,424	2.3	1.3
Women	20-24	1,110	13.5	0.0	\$11,528	2.7	1.5
Women	25-34	2,476	30.1	0.0	\$24,286	3.3	1.5
Women	35-44	1,496	18.2	0.0	\$33,854	3.4	1.3
Women	45-54	1,444	17.6	0.0	\$35,209	3.5	1.2
Women	55-64	1,001	12.2	0.0	\$32,367	3.4	1.2
Women	65-Up	282	3.4	0.0	\$24,679	3.1	1.1
Women	N/A	5	0.1	0.0	\$15,228	2.0	1.0
Women	Total	8,220	100.0	32.0	\$26,234	3.2	1.4
Men	00-19	470	4.4	0.0	\$4,851	2.3	1.3
Men	20-24	1,278	12.0	0.0	\$11,318	2.6	1.5
Men	25-34	3,160	29.7	0.0	\$25,525	3.2	1.5
Men	35-44	2,342	22.0	0.0	\$39,111	3.3	1.4
Men	45-54	1,755	16.5	0.0	\$47,798	3.4	1.3
Men	55-64	1,264	11.9	0.0	\$51,253	3.3	1.2
Men	65-Up	381	3.6	0.0	\$47,533	3.0	1.1
Men	N/A	5	0.0	0.0	\$14,322	2.6	1.2
Men	Total	10,655	100.0	41.4	\$33,398	3.1	1.4
N/A	N/A	6,849	100.0	0.0	\$9,744	2.2	1.2
N/A	Total	6,849	100.0	26.6	\$9,744	2.2	1.2
Total	00-19	876	3.4	0.0	\$4,653	2.3	1.3
Total	20-24	2,388	9.3	0.0	\$11,416	2.6	1.5
Total	25-34	5,636	21.9	0.0	\$24,980	3.3	1.5
Total	35-44	3,838	14.9	0.0	\$37,062	3.3	1.4
Total	45-54	3,199	12.4	0.0	\$42,116	3.4	1.3
Total	55-64	2,265	8.8	0.0	\$42,907	3.3	1.2
Total	65-Up	663	2.6	0.0	\$37,812	3.0	1.1
Total	N/A	6,859	26.7	0.0	\$9,751	2.2	1.2
Total	Total	25,724	100.0	100.0	\$24,811	2.9	1.3

Note: Persons worked at any time during the year.

County Determination: Based on county of employment in which the person made the most money in the year.

N/A: Represents persons with demographic data that is unavailable.

N/A = Nonresidents, individuals for whom demographic data are not available.

Source: Demographics of Persons Working in Wyoming by County, Industry, Age, & Gender, 2000-2017.
Research & Planning, Wyoming Department of Workforce Services.

Prepared by M. Moore, Research & Planning, WY DWS, 6/12/18.

Average Earnings by Age and Gender with Place of Work in Teton County in 2010

Gender	Age Group	Number	Age Percent	Gender Percent	Average Annual Wage	Average Quarters Worked	Average Annual Employers
Women	00-19	397	4.9	0.0	\$4,406	2.4	1.3
Women	20-24	1,032	12.7	0.0	\$10,965	2.7	1.5
Women	25-34	2,443	30.2	0.0	\$23,419	3.3	1.6
Women	35-44	1,484	18.3	0.0	\$35,032	3.4	1.4
Women	45-54	1,400	17.3	0.0	\$34,771	3.5	1.3
Women	55-64	1,056	13.0	0.0	\$34,350	3.4	1.2
Women	65-Up	281	3.5	0.0	\$25,633	3.1	1.1
Women	N/A	2	0.0	0.0	\$36,838	2.5	1.0
Women	Total	8,095	100.0	32.8	\$26,497	3.2	1.4
Men	00-19	452	4.3	0.0	\$4,654	2.2	1.3
Men	20-24	1,222	11.6	0.0	\$10,692	2.7	1.5
Men	25-34	3,061	29.2	0.0	\$24,605	3.2	1.6
Men	35-44	2,349	22.4	0.0	\$38,006	3.3	1.4
Men	45-54	1,727	16.5	0.0	\$46,509	3.3	1.3
Men	55-64	1,298	12.4	0.0	\$53,779	3.3	1.2
Men	65-Up	384	3.7	0.0	\$53,429	3.1	1.1
Men	N/A	3	0.0	0.0	\$16,636	3.0	1.0
Men	Total	10,496	100.0	42.5	\$33,389	3.2	1.4
N/A	N/A	6,094	100.0	0.0	\$9,485	2.2	1.2
N/A	Total	6,094	100.0	24.7	\$9,485	2.2	1.2
Total	00-19	849	3.4	0.0	\$4,538	2.3	1.3
Total	20-24	2,254	9.1	0.0	\$10,817	2.7	1.5
Total	25-34	5,504	22.3	0.0	\$24,078	3.2	1.6
Total	35-44	3,833	15.5	0.0	\$36,855	3.4	1.4
Total	45-54	3,127	12.7	0.0	\$41,254	3.4	1.3
Total	55-64	2,354	9.5	0.0	\$45,063	3.4	1.2
Total	65-Up	665	2.7	0.0	\$41,684	3.1	1.1
Total	N/A	6,099	24.7	0.0	\$9,497	2.2	1.2
Total	Total	24,685	100.0	100.0	\$25,228	3.0	1.3

Note: Persons worked at any time during the year.

County Determination: Based on county of employment in which the person made the most money in the year.

N/A: Represents persons with demographic data that is unavailable.

N/A = Nonresidents, individuals for whom demographic data are not available.

Source: Demographics of Persons Working in Wyoming by County, Industry, Age, & Gender, 2000-2017.

Research & Planning, Wyoming Department of Workforce Services.

Prepared by M. Moore, Research & Planning, WY DWS, 6/12/18.

Average Earnings by Age and Gender with Place of Work in Teton County in 2011

Gender	Age Group	Number	Age Percent	Gender Percent	Average Annual Wage	Average Quarters Worked	Average Annual Employers
Women	00-19	370	4.6	0.0	\$4,514	2.3	1.4
Women	20-24	1,003	12.5	0.0	\$10,771	2.7	1.6
Women	25-34	2,396	29.9	0.0	\$23,502	3.3	1.6
Women	35-44	1,491	18.6	0.0	\$35,134	3.4	1.3
Women	45-54	1,372	17.1	0.0	\$35,607	3.5	1.3
Women	55-64	1,075	13.4	0.0	\$35,596	3.5	1.2
Women	65-Up	313	3.9	0.0	\$24,583	3.1	1.1
Women	N/A	2	0.0	0.0	\$39,160	2.5	1.0
Women	Total	8,022	100.0	32.5	\$26,933	3.3	1.4
Men	00-19	389	3.7	0.0	\$4,819	2.3	1.4
Men	20-24	1,127	10.8	0.0	\$10,874	2.7	1.6
Men	25-34	3,047	29.2	0.0	\$24,249	3.3	1.6
Men	35-44	2,362	22.6	0.0	\$38,410	3.3	1.4
Men	45-54	1,743	16.7	0.0	\$48,005	3.4	1.3
Men	55-64	1,325	12.7	0.0	\$53,278	3.3	1.2
Men	65-Up	442	4.2	0.0	\$51,828	3.1	1.1
Men	N/A	3	0.0	0.0	\$17,027	2.7	1.0
Men	Total	10,438	100.0	42.3	\$34,103	3.2	1.4
N/A	N/A	6,223	100.0	0.0	\$9,525	2.2	1.2
N/A	Total	6,223	100.0	25.2	\$9,525	2.2	1.2
Total	00-19	759	3.1	0.0	\$4,671	2.3	1.4
Total	20-24	2,130	8.6	0.0	\$10,826	2.7	1.6
Total	25-34	5,443	22.1	0.0	\$23,920	3.3	1.6
Total	35-44	3,853	15.6	0.0	\$37,142	3.4	1.4
Total	45-54	3,115	12.6	0.0	\$42,544	3.4	1.3
Total	55-64	2,400	9.7	0.0	\$45,358	3.4	1.2
Total	65-Up	755	3.1	0.0	\$40,533	3.1	1.1
Total	N/A	6,228	25.2	0.0	\$9,538	2.2	1.2
Total	Total	24,683	100.0	100.0	\$25,576	3.0	1.4

Note: Persons worked at any time during the year.

County Determination: Based on county of employment in which the person made the most money in the year.

N/A: Represents persons with demographic data that is unavailable.

N/A = Nonresidents, individuals for whom demographic data are not available.

Source: Demographics of Persons Working in Wyoming by County, Industry, Age, & Gender, 2000-2017.

Research & Planning, Wyoming Department of Workforce Services.

Prepared by M. Moore, Research & Planning, WY DWS, 6/12/18.

Average Earnings by Age and Gender with Place of Work in Teton County in 2012

Gender	Age Group	Number	Age Percent	Gender Percent	Average Annual Wage	Average Quarters Worked	Average Annual Employers
Women	00-19	411	5.1	0.0	\$4,522	2.4	1.4
Women	20-24	982	12.1	0.0	\$11,352	2.8	1.7
Women	25-34	2,376	29.3	0.0	\$24,189	3.3	1.6
Women	35-44	1,508	18.6	0.0	\$36,417	3.5	1.4
Women	45-54	1,401	17.3	0.0	\$37,082	3.5	1.3
Women	55-64	1,065	13.1	0.0	\$36,141	3.5	1.2
Women	65-Up	359	4.4	0.0	\$28,110	3.1	1.1
Women	N/A	3	0.0	0.0	\$28,613	2.3	1.0
Women	Total	8,105	100.0	32.0	\$27,886	3.3	1.5
Men	00-19	432	4.1	0.0	\$4,670	2.3	1.4
Men	20-24	1,092	10.3	0.0	\$11,326	2.7	1.7
Men	25-34	3,070	28.8	0.0	\$24,672	3.3	1.6
Men	35-44	2,453	23.0	0.0	\$41,317	3.3	1.4
Men	45-54	1,736	16.3	0.0	\$49,186	3.3	1.3
Men	55-64	1,378	12.9	0.0	\$53,290	3.4	1.2
Men	65-Up	486	4.6	0.0	\$56,357	3.1	1.2
Men	N/A	1	0.0	0.0	\$12,000	4.0	1.0
Men	Total	10,648	100.0	42.1	\$35,472	3.2	1.5
N/A	N/A	6,539	100.0	0.0	\$9,823	2.2	1.2
N/A	Total	6,539	100.0	25.9	\$9,823	2.2	1.2
Total	00-19	843	3.3	0.0	\$4,598	2.3	1.4
Total	20-24	2,074	8.2	0.0	\$11,338	2.7	1.7
Total	25-34	5,446	21.5	0.0	\$24,461	3.3	1.6
Total	35-44	3,961	15.7	0.0	\$39,452	3.4	1.4
Total	45-54	3,137	12.4	0.0	\$43,780	3.4	1.3
Total	55-64	2,443	9.7	0.0	\$45,814	3.4	1.2
Total	65-Up	845	3.3	0.0	\$44,356	3.1	1.2
Total	N/A	6,543	25.9	0.0	\$9,832	2.2	1.2
Total	Total	25,292	100.0	100.0	\$26,409	3.0	1.4

Note: Persons worked at any time during the year.

County Determination: Based on county of employment in which the person made the most money in the year.

N/A: Represents persons with demographic data that is unavailable.

N/A = Nonresidents, individuals for whom demographic data are not available.

Source: Demographics of Persons Working in Wyoming by County, Industry, Age, & Gender, 2000-2017.

Research & Planning, Wyoming Department of Workforce Services.

Prepared by M. Moore, Research & Planning, WY DWS, 6/12/18.

Average Earnings by Age and Gender with Place of Work in Teton County in 2013

Gender	Age Group	Number	Age Percent	Gender Percent	Average Annual Wage	Average Quarters Worked	Average Annual Employers
Women	00-19	407	4.9	0.0	\$4,508	2.3	1.4
Women	20-24	996	12.0	0.0	\$11,512	2.8	1.7
Women	25-34	2,423	29.2	0.0	\$24,507	3.3	1.6
Women	35-44	1,588	19.2	0.0	\$35,921	3.5	1.4
Women	45-54	1,378	16.6	0.0	\$38,584	3.5	1.3
Women	55-64	1,106	13.3	0.0	\$35,248	3.4	1.2
Women	65-Up	390	4.7	0.0	\$25,590	3.1	1.2
Women	N/A	3	0.0	0.0	\$30,045	2.7	1.0
Women	Total	8,291	100.0	31.8	\$27,976	3.3	1.5
Men	00-19	476	4.4	0.0	\$5,064	2.3	1.4
Men	20-24	1,147	10.6	0.0	\$11,748	2.7	1.6
Men	25-34	3,025	28.0	0.0	\$26,171	3.3	1.6
Men	35-44	2,434	22.5	0.0	\$42,035	3.4	1.5
Men	45-54	1,785	16.5	0.0	\$51,161	3.4	1.3
Men	55-64	1,418	13.1	0.0	\$50,679	3.3	1.2
Men	65-Up	528	4.9	0.0	\$67,062	3.1	1.2
Men	N/A	1	0.0	0.0	\$12,000	4.0	1.0
Men	Total	10,814	100.0	41.4	\$36,616	3.2	1.5
N/A	N/A	6,992	100.0	0.0	\$10,197	2.2	1.2
N/A	Total	6,992	100.0	26.8	\$10,197	2.2	1.2
Total	00-19	883	3.4	0.0	\$4,808	2.3	1.4
Total	20-24	2,143	8.2	0.0	\$11,638	2.7	1.7
Total	25-34	5,448	20.9	0.0	\$25,431	3.3	1.6
Total	35-44	4,022	15.4	0.0	\$39,621	3.4	1.4
Total	45-54	3,163	12.1	0.0	\$45,682	3.4	1.3
Total	55-64	2,524	9.7	0.0	\$43,917	3.4	1.2
Total	65-Up	918	3.5	0.0	\$49,443	3.1	1.2
Total	N/A	6,996	26.8	0.0	\$10,206	2.2	1.2
Total	Total	26,097	100.0	100.0	\$26,793	3.0	1.4

Note: Persons worked at any time during the year.

County Determination: Based on county of employment in which the person made the most money in the year.

N/A: Represents persons with demographic data that is unavailable.

N/A = Nonresidents, individuals for whom demographic data are not available.

Source: Demographics of Persons Working in Wyoming by County, Industry, Age, & Gender, 2000-2017.
Research & Planning, Wyoming Department of Workforce Services.

Prepared by M. Moore, Research & Planning, WY DWS, 6/12/18.

Average Earnings by Age and Gender with Place of Work in Teton County in 2014

Gender	Age Group	Number	Age Percent	Gender Percent	Average Annual Wage	Average Quarters Worked	Average Annual Employers
Women	00-19	449	5.3	0.0	\$4,850	2.5	1.5
Women	20-24	919	10.9	0.0	\$12,122	2.8	1.8
Women	25-34	2,479	29.4	0.0	\$25,456	3.3	1.6
Women	35-44	1,632	19.4	0.0	\$36,780	3.5	1.4
Women	45-54	1,373	16.3	0.0	\$39,769	3.5	1.3
Women	55-64	1,145	13.6	0.0	\$37,449	3.4	1.2
Women	65-Up	427	5.1	0.0	\$25,682	3.2	1.2
Women	N/A	2	0.0	0.0	\$46,766	2.5	1.0
Women	Total	8,426	100.0	31.1	\$29,075	3.3	1.5
Men	00-19	518	4.8	0.0	\$5,681	2.3	1.5
Men	20-24	1,059	9.8	0.0	\$13,163	2.8	1.6
Men	25-34	3,115	28.7	0.0	\$26,989	3.3	1.6
Men	35-44	2,399	22.1	0.0	\$44,306	3.4	1.4
Men	45-54	1,755	16.2	0.0	\$54,774	3.4	1.3
Men	55-64	1,429	13.2	0.0	\$49,798	3.4	1.2
Men	65-Up	566	5.2	0.0	\$59,648	3.1	1.1
Men	N/A	2	0.0	0.0	\$11,101	3.0	1.0
Men	Total	10,843	100.0	40.0	\$37,657	3.2	1.5
N/A	N/A	7,854	100.0	0.0	\$11,126	2.3	1.2
N/A	Total	7,854	100.0	29.0	\$11,126	2.3	1.2
Total	00-19	967	3.6	0.0	\$5,295	2.4	1.5
Total	20-24	1,978	7.3	0.0	\$12,679	2.8	1.7
Total	25-34	5,594	20.6	0.0	\$26,310	3.3	1.6
Total	35-44	4,031	14.9	0.0	\$41,259	3.4	1.4
Total	45-54	3,128	11.5	0.0	\$48,187	3.4	1.3
Total	55-64	2,574	9.5	0.0	\$44,304	3.4	1.2
Total	65-Up	993	3.7	0.0	\$45,043	3.1	1.2
Total	N/A	7,858	29.0	0.0	\$11,136	2.3	1.2
Total	Total	27,123	100.0	100.0	\$27,309	3.0	1.4

Note: Persons worked at any time during the year.

County Determination: Based on county of employment in which the person made the most money in the year.

N/A: Represents persons with demographic data that is unavailable.

N/A = Nonresidents, individuals for whom demographic data are not available.

Source: Demographics of Persons Working in Wyoming by County, Industry, Age, & Gender, 2000-2017.
Research & Planning, Wyoming Department of Workforce Services.

Prepared by M. Moore, Research & Planning, WY DWS, 6/12/18.

Average Earnings by Age and Gender with Place of Work in Teton County in 2015

Gender	Age Group	Number	Age Percent	Gender Percent	Average Annual Wage	Average Quarters Worked	Average Annual Employers
Women	00-19	479	5.7	0.0	\$5,831	2.5	1.5
Women	20-24	925	10.9	0.0	\$12,934	2.8	1.7
Women	25-34	2,441	28.8	0.0	\$27,519	3.4	1.7
Women	35-44	1,638	19.4	0.0	\$38,298	3.5	1.4
Women	45-54	1,373	16.2	0.0	\$41,814	3.5	1.3
Women	55-64	1,168	13.8	0.0	\$40,005	3.5	1.3
Women	65-Up	437	5.2	0.0	\$27,178	3.2	1.2
Women	N/A	2	0.0	0.0	\$44,636	2.5	1.0
Women	Total	8,463	100.0	29.9	\$30,812	3.3	1.5
Men	00-19	528	4.9	0.0	\$6,079	2.4	1.5
Men	20-24	1,018	9.4	0.0	\$13,694	2.8	1.7
Men	25-34	3,061	28.1	0.0	\$29,086	3.3	1.7
Men	35-44	2,405	22.1	0.0	\$48,787	3.4	1.5
Men	45-54	1,829	16.8	0.0	\$54,535	3.4	1.4
Men	55-64	1,437	13.2	0.0	\$55,197	3.4	1.3
Men	65-Up	602	5.5	0.0	\$63,868	3.2	1.2
Men	N/A	3	0.0	0.0	\$7,726	2.3	1.0
Men	Total	10,883	100.0	38.4	\$40,526	3.2	1.5
N/A	N/A	8,996	100.0	0.0	\$11,541	2.2	1.3
N/A	Total	8,996	100.0	31.7	\$11,541	2.2	1.3
Total	00-19	1,007	3.6	0.0	\$5,961	2.4	1.5
Total	20-24	1,943	6.9	0.0	\$13,332	2.8	1.7
Total	25-34	5,502	19.4	0.0	\$28,390	3.3	1.7
Total	35-44	4,043	14.3	0.0	\$44,538	3.4	1.4
Total	45-54	3,202	11.3	0.0	\$49,080	3.4	1.4
Total	55-64	2,605	9.2	0.0	\$48,385	3.4	1.3
Total	65-Up	1,039	3.7	0.0	\$48,436	3.2	1.2
Total	N/A	9,001	31.8	0.0	\$11,547	2.2	1.3
Total	Total	28,342	100.0	100.0	\$28,426	2.9	1.4

Note: Persons worked at any time during the year.

County Determination: Based on county of employment in which the person made the most money in the year.

N/A: Represents persons with demographic data that is unavailable.

N/A = Nonresidents, individuals for whom demographic data are not available.

Source: Demographics of Persons Working in Wyoming by County, Industry, Age, & Gender, 2000-2017.

Research & Planning, Wyoming Department of Workforce Services.

Prepared by M. Moore, Research & Planning, WY DWS, 6/12/18.

Average Earnings by Age and Gender with Place of Work in Teton County in 2016

Gender	Age Group	Number	Age Percent	Gender Percent	Average Annual Wage	Average Quarters Worked	Average Annual Employers
Women	00-19	470	5.6	0.0	\$5,323	2.4	1.4
Women	20-24	908	10.7	0.0	\$14,866	2.9	1.7
Women	25-34	2,370	28.0	0.0	\$28,860	3.4	1.6
Women	35-44	1,662	19.6	0.0	\$40,590	3.5	1.4
Women	45-54	1,400	16.6	0.0	\$45,055	3.5	1.3
Women	55-64	1,183	14.0	0.0	\$40,111	3.4	1.3
Women	65-Up	464	5.5	0.0	\$26,433	3.1	1.2
Women	N/A	2	0.0	0.0	\$44,656	2.5	1.0
Women	Total	8,459	100.0	28.6	\$32,479	3.3	1.5
Men	00-19	503	4.7	0.0	\$6,515	2.4	1.5
Men	20-24	992	9.2	0.0	\$15,376	2.8	1.8
Men	25-34	3,000	27.8	0.0	\$30,365	3.3	1.7
Men	35-44	2,414	22.4	0.0	\$50,177	3.5	1.4
Men	45-54	1,809	16.8	0.0	\$58,732	3.5	1.4
Men	55-64	1,436	13.3	0.0	\$59,250	3.4	1.3
Men	65-Up	629	5.8	0.0	\$69,157	3.1	1.1
Men	N/A	5	0.0	0.0	\$8,931	2.8	1.8
Men	Total	10,788	100.0	36.5	\$43,161	3.3	1.5
N/A	N/A	10,335	100.0	0.0	\$12,171	2.2	1.3
N/A	Total	10,335	100.0	34.9	\$12,171	2.2	1.3
Total	00-19	973	3.3	0.0	\$5,939	2.4	1.5
Total	20-24	1,900	6.4	0.0	\$15,132	2.8	1.7
Total	25-34	5,370	18.2	0.0	\$29,701	3.3	1.7
Total	35-44	4,076	13.8	0.0	\$46,268	3.5	1.4
Total	45-54	3,209	10.8	0.0	\$52,765	3.5	1.4
Total	55-64	2,619	8.9	0.0	\$50,605	3.4	1.3
Total	65-Up	1,093	3.7	0.0	\$51,020	3.1	1.2
Total	N/A	10,342	35.0	0.0	\$12,175	2.2	1.3
Total	Total	29,582	100.0	100.0	\$29,280	2.9	1.4

Note: Persons worked at any time during the year.

County Determination: Based on county of employment in which the person made the most money in the year.

N/A: Represents persons with demographic data that is unavailable.

N/A = Nonresidents, individuals for whom demographic data are not available.

Source: Demographics of Persons Working in Wyoming by County, Industry, Age, & Gender, 2000-2017.

Research & Planning, Wyoming Department of Workforce Services.

Prepared by M. Moore, Research & Planning, WY DWS, 6/12/18.

Average Earnings by Age and Gender with Place of Work in Teton County in 2017

Gender	Age Group	Number	Age Percent	Gender Percent	Average Annual Wage	Average Quarters Worked	Average Annual Employers
Women	00-19	416	5.1	0.0	\$6,029	2.5	1.6
Women	20-24	821	10.1	0.0	\$15,614	2.9	1.7
Women	25-34	2,182	26.8	0.0	\$30,980	3.4	1.7
Women	35-44	1,691	20.7	0.0	\$43,142	3.5	1.4
Women	45-54	1,413	17.3	0.0	\$46,203	3.5	1.3
Women	55-64	1,159	14.2	0.0	\$41,624	3.5	1.3
Women	65-Up	473	5.8	0.0	\$28,094	3.2	1.2
Women	N/A	1	0.0	0.0	\$90,697	4.0	1.0
Women	Total	8,156	100.0	27.2	\$34,672	3.4	1.5
Men	00-19	427	4.1	0.0	\$6,810	2.4	1.4
Men	20-24	864	8.4	0.0	\$17,735	2.9	1.8
Men	25-34	2,785	27.0	0.0	\$32,998	3.3	1.7
Men	35-44	2,340	22.7	0.0	\$52,691	3.5	1.5
Men	45-54	1,786	17.3	0.0	\$61,545	3.5	1.4
Men	55-64	1,435	13.9	0.0	\$61,308	3.4	1.3
Men	65-Up	686	6.6	0.0	\$62,733	3.1	1.2
Men	N/A	4	0.0	0.0	\$20,485	3.5	1.0
Men	Total	10,327	100.0	34.4	\$45,942	3.3	1.5
N/A	N/A	11,503	100.0	0.0	\$13,202	2.3	1.3
N/A	Total	11,503	100.0	38.4	\$13,202	2.3	1.3
Total	00-19	843	2.8	0.0	\$6,425	2.5	1.5
Total	20-24	1,685	5.6	0.0	\$16,701	2.9	1.8
Total	25-34	4,967	16.6	0.0	\$32,112	3.4	1.7
Total	35-44	4,031	13.4	0.0	\$48,685	3.5	1.4
Total	45-54	3,199	10.7	0.0	\$54,769	3.5	1.4
Total	55-64	2,594	8.7	0.0	\$52,513	3.4	1.3
Total	65-Up	1,159	3.9	0.0	\$48,596	3.2	1.2
Total	N/A	11,508	38.4	0.0	\$13,211	2.3	1.3
Total	Total	29,986	100.0	100.0	\$30,317	2.9	1.4

Note: Persons worked at any time during the year.

County Determination: Based on county of employment in which the person made the most money in the year.

N/A: Represents persons with demographic data that is unavailable.

N/A = Nonresidents, individuals for whom demographic data are not available.

Source: Demographics of Persons Working in Wyoming by County, Industry, Age, & Gender, 2000-2017.

Research & Planning, Wyoming Department of Workforce Services.

Prepared by M. Moore, Research & Planning, WY DWS, 6/12/18.