

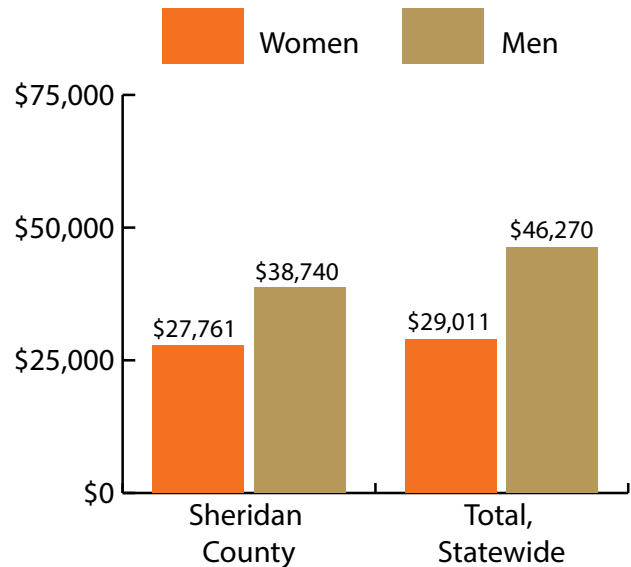
Sheridan County at a Glance, 2017

Demographics of Persons Working in Wyoming by County, Industry, Age, & Gender, 2000-2017

Table: Total Number of Persons Working in Sheridan County, WY, at Any Time by Gender and Age, 2016-2017

Gender	2016	2017	Change	
			N	%
Women	7,314	7,188	-126	-1.7
Men	7,317	7,104	-213	-2.9
Nonresidents	943	1,188	245	26.0
Total	15,574	15,480	-94	-0.6

Age	2016	2017	Change	
			N	%
00-19	1,152	1,124	-28	-2.4
20-24	1,632	1,510	-122	-7.5
25-34	2,961	2,881	-80	-2.7
35-44	2,763	2,732	-31	-1.1
45-54	2,542	2,472	-70	-2.8
55-64	2,558	2,473	-85	-3.3
65-Up	1,020	1,094	74	7.3
Nonresidents	946	1,194	248	26.2
Total	15,574	15,480	-94	-0.6



Women's Wages as % of Men's Wages

Sheridan County: 71.7%

Total: 62.7%

Figure: Average Annual Wages by Gender, 2017

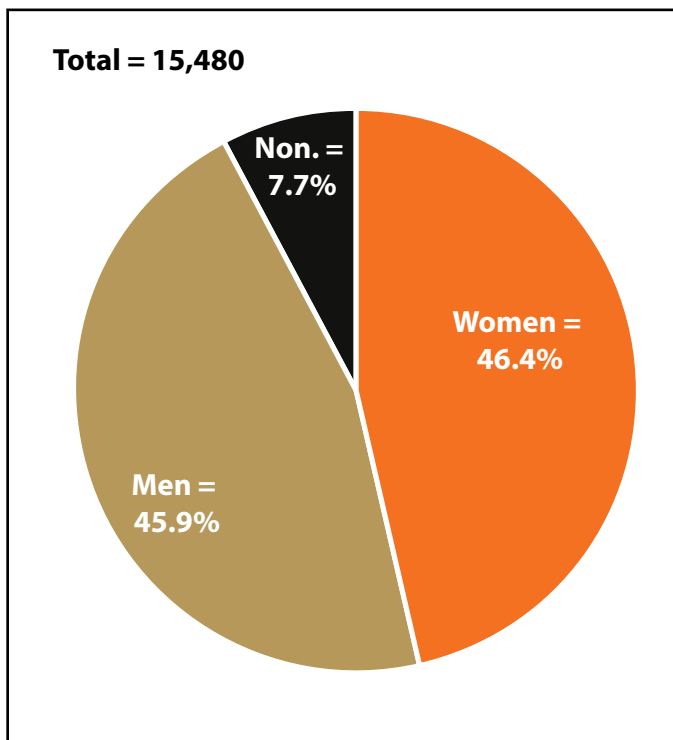


Figure: Persons Working by Gender, 2017

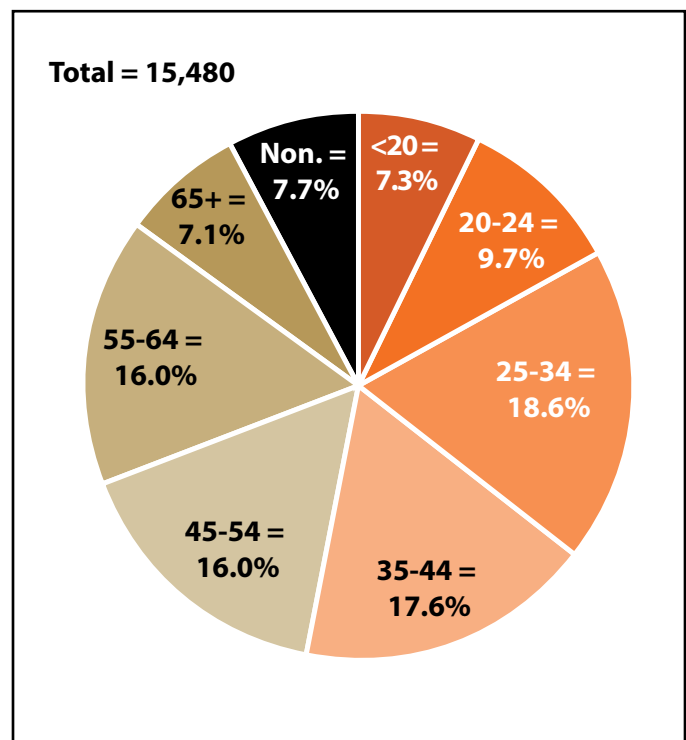


Figure: Persons Working by Age, 2017

Note: Nonresidents are individuals for whom demographic data are not available.

Source: Demographics of Persons Working in Wyoming by County, Industry, Age, & Gender, 2000-2017. Research & Planning, Wyoming Department of Workforce Services. Prepared by M. Moore, Research & Planning, WY DWS, 6/12/18.

Persons Working in Sheridan County by Gender and Age, 2000-2017

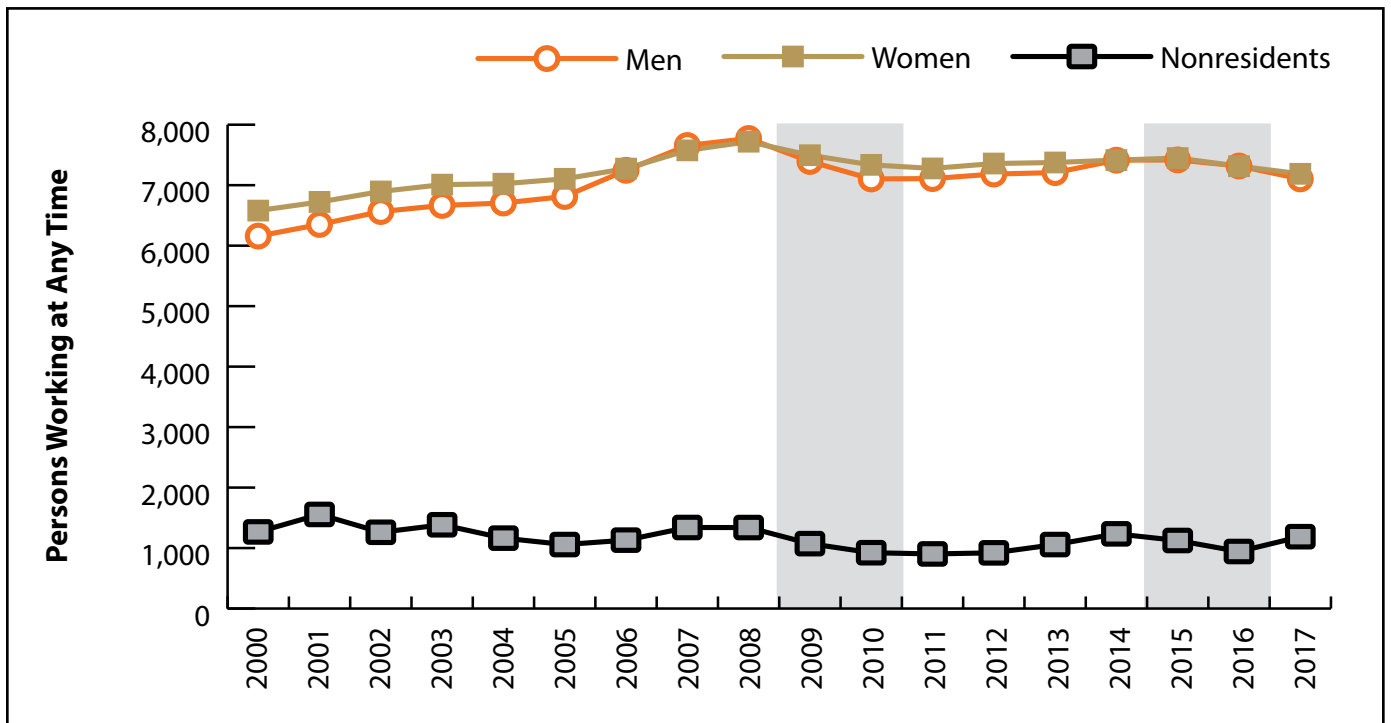


Figure: Persons Working in Sheridan County at Any Time by Gender, 2000-2017

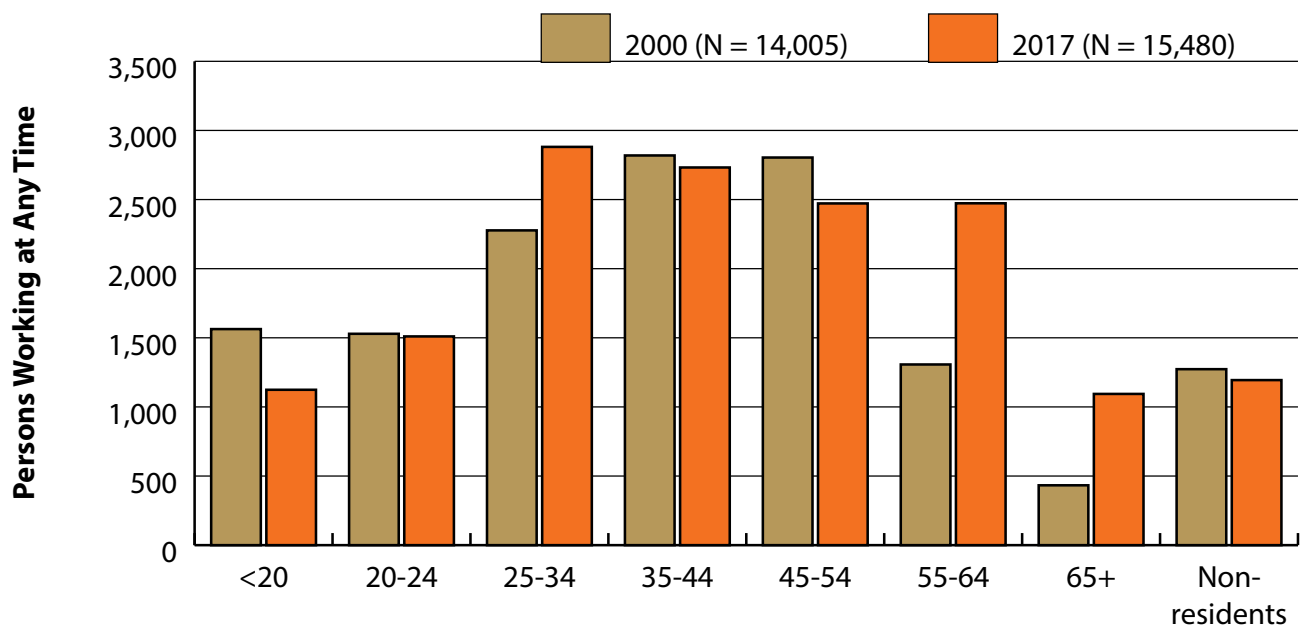


Figure: Persons Working in Sheridan County at Any Time by Age, 2000-2017

Note: Nonresidents are individuals for whom demographic data are not available.
 Shaded areas indicate periods of economic downturn: 2009Q1-2010Q1 and 2015Q2-2016Q4.
 Source: Demographics of Persons Working in Wyoming by County, Industry, Age, & Gender, 2000-2017. Research & Planning, Wyoming Department of Workforce Services. Prepared by M. Moore, Research & Planning, WY DWS, 6/12/18.

Wages for Persons Working in Sheridan County by Gender, 2000-2017

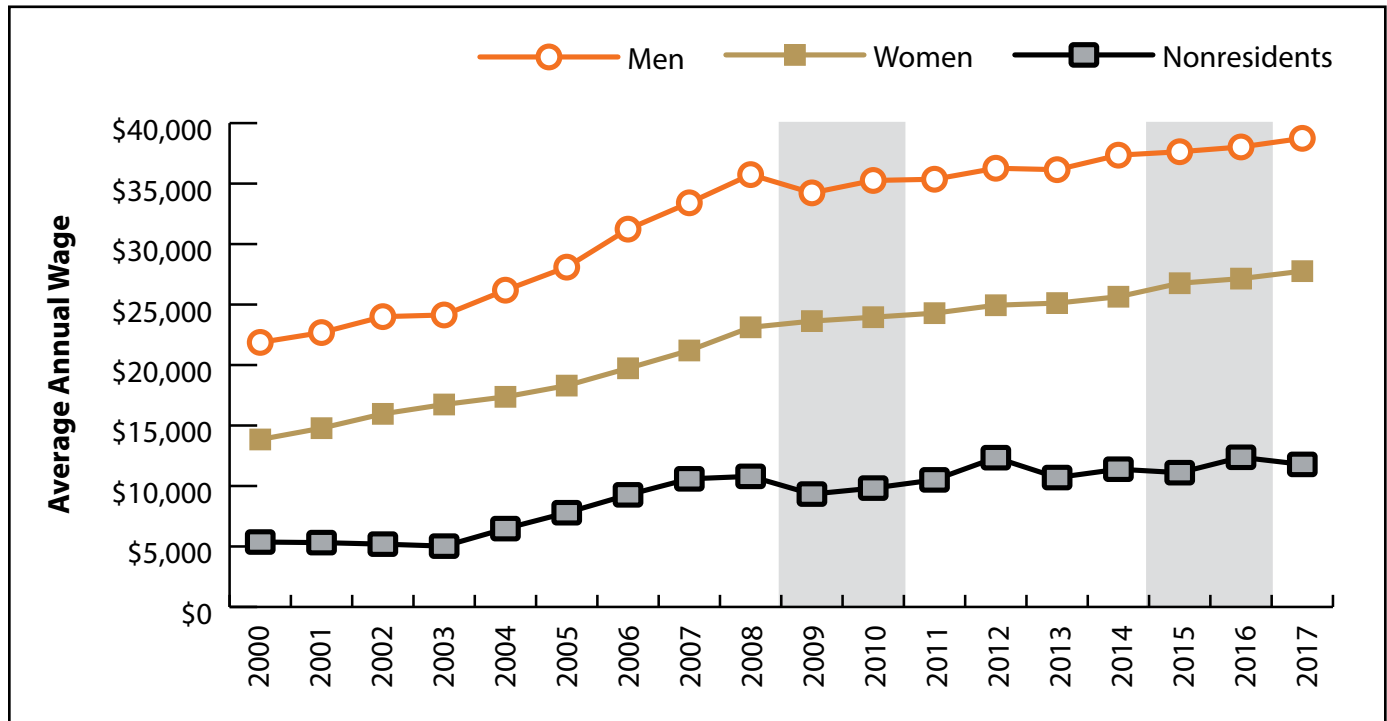


Figure: Average Annual Wage for Persons Working in Sheridan County at Any Time by Age, 2000-2017

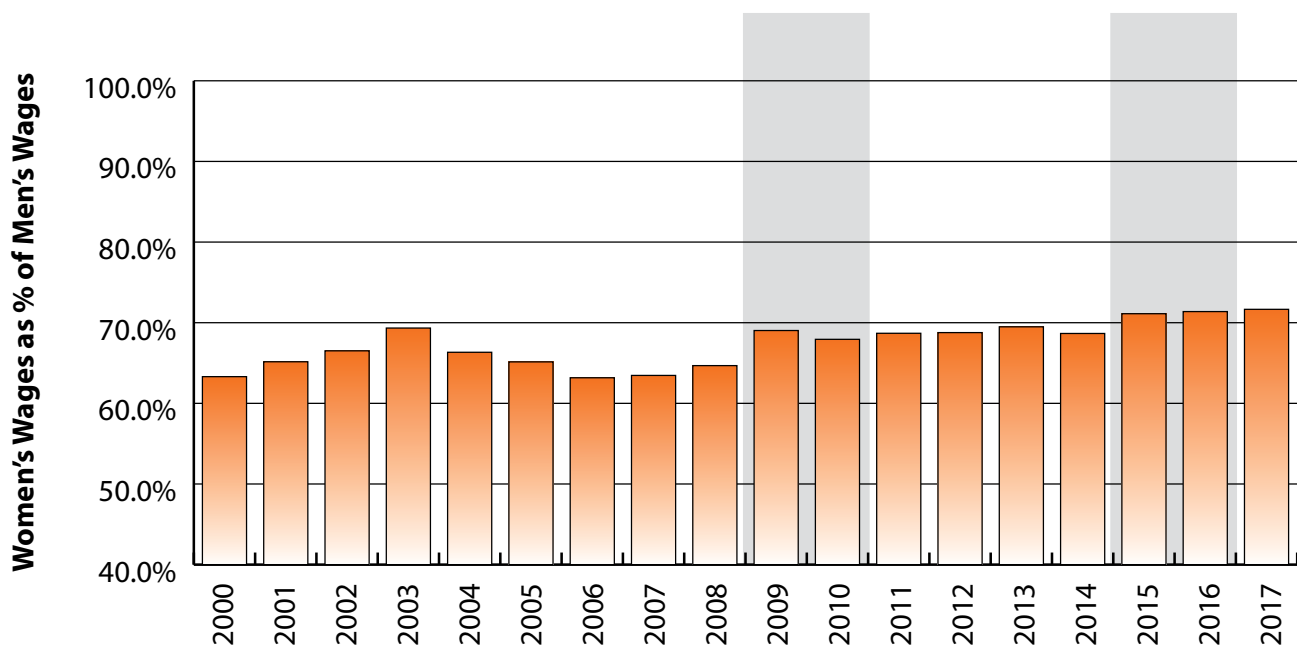


Figure: Women's Average Annual Wages as a Percent of Men's Wages for Persons Working in Sheridan County at Any Time by Age, 2000-2017

Note: Nonresidents are individuals for whom demographic data are not available.

Shaded areas indicate periods of economic downturn: 2009Q1-2010Q1 and 2015Q2-2016Q4.

Source: Demographics of Persons Working in Wyoming by County, Industry, Age, & Gender, 2000-2017. Research & Planning, Wyoming Department of Workforce Services. Prepared by M. Moore, Research & Planning, WY DWS, 6/12/18.

Average Earnings by Age and Gender with Place of Work in Sheridan County in 2000

Gender	Age Group	Number	Age Percent	Gender Percent	Average Annual Wage	Average Quarters Worked	Average Annual Employers
Women	00-19	772	11.7	0.0	\$3,069	2.7	1.7
Women	20-24	736	11.2	0.0	\$7,248	3.0	1.9
Women	25-34	1,099	16.7	0.0	\$13,106	3.3	1.6
Women	35-44	1,534	23.3	0.0	\$17,039	3.5	1.5
Women	45-54	1,554	23.6	0.0	\$19,707	3.6	1.4
Women	55-64	667	10.1	0.0	\$15,890	3.5	1.3
Women	65-Up	216	3.3	0.0	\$7,369	3.0	1.1
Women	N/A	2	0.0	0.0	\$24,832	2.5	1.0
Women	Total	6,580	100.0	47.0	\$13,846	3.3	1.5
Men	00-19	791	12.8	0.0	\$3,523	2.6	1.7
Men	20-24	793	12.9	0.0	\$9,402	3.1	2.0
Men	25-34	1,178	19.1	0.0	\$19,481	3.3	1.6
Men	35-44	1,285	20.9	0.0	\$27,055	3.5	1.4
Men	45-54	1,250	20.3	0.0	\$32,714	3.4	1.3
Men	55-64	640	10.4	0.0	\$28,266	3.4	1.2
Men	65-Up	217	3.5	0.0	\$35,419	3.1	1.2
Men	N/A	4	0.1	0.0	\$12,582	3.3	1.0
Men	Total	6,158	100.0	44.0	\$21,870	3.2	1.5
N/A	N/A	1,267	100.0	0.0	\$5,367	1.6	1.1
N/A	Total	1,267	100.0	9.0	\$5,367	1.6	1.1
Total	00-19	1,563	11.2	0.0	\$3,299	2.6	1.7
Total	20-24	1,529	10.9	0.0	\$8,365	3.0	1.9
Total	25-34	2,277	16.3	0.0	\$16,404	3.3	1.6
Total	35-44	2,819	20.1	0.0	\$21,604	3.5	1.4
Total	45-54	2,804	20.0	0.0	\$25,505	3.5	1.3
Total	55-64	1,307	9.3	0.0	\$21,950	3.4	1.3
Total	65-Up	433	3.1	0.0	\$21,426	3.0	1.1
Total	N/A	1,273	9.1	0.0	\$5,420	1.7	1.1
Total	Total	14,005	100.0	100.0	\$16,607	3.1	1.5

Note: Persons worked at any time during the year.

County Determination: Based on county of employment in which the person made the most money in the year.

N/A: Represents persons with demographic data that is unavailable.

N/A = Nonresidents, individuals for whom demographic data are not available.

Source: Demographics of Persons Working in Wyoming by County, Industry, Age, & Gender, 2000-2017.

Research & Planning, Wyoming Department of Workforce Services.

Prepared by M. Moore, Research & Planning, WY DWS, 6/12/18.

Average Earnings by Age and Gender with Place of Work in Sheridan County in 2001

Gender	Age Group	Number	Age Percent	Gender Percent	Average Annual Wage	Average Quarters Worked	Average Annual Employers
Women	00-19	787	11.7	0.0	\$3,282	2.7	1.7
Women	20-24	766	11.4	0.0	\$7,661	3.0	1.9
Women	25-34	1,148	17.1	0.0	\$13,986	3.3	1.6
Women	35-44	1,463	21.8	0.0	\$17,796	3.4	1.4
Women	45-54	1,641	24.4	0.0	\$21,071	3.6	1.3
Women	55-64	712	10.6	0.0	\$17,696	3.5	1.3
Women	65-Up	204	3.0	0.0	\$7,806	3.2	1.1
Women	N/A	1	0.0	0.0	\$41,331	4.0	1.0
Women	Total	6,722	100.0	45.9	\$14,780	3.3	1.5
Men	00-19	779	12.3	0.0	\$3,994	2.6	1.7
Men	20-24	819	12.9	0.0	\$10,432	3.0	1.9
Men	25-34	1,257	19.8	0.0	\$20,728	3.2	1.6
Men	35-44	1,272	20.0	0.0	\$29,118	3.4	1.4
Men	45-54	1,296	20.4	0.0	\$32,310	3.4	1.3
Men	55-64	677	10.7	0.0	\$29,425	3.4	1.2
Men	65-Up	247	3.9	0.0	\$30,310	3.0	1.1
Men	N/A	4	0.1	0.0	\$8,735	2.3	1.3
Men	Total	6,351	100.0	43.4	\$22,684	3.2	1.5
N/A	N/A	1,556	100.0	0.0	\$5,318	1.4	1.1
N/A	Total	1,556	100.0	10.6	\$5,318	1.4	1.1
Total	00-19	1,566	10.7	0.0	\$3,636	2.6	1.7
Total	20-24	1,585	10.8	0.0	\$9,093	3.0	1.9
Total	25-34	2,405	16.4	0.0	\$17,510	3.3	1.6
Total	35-44	2,735	18.7	0.0	\$23,062	3.4	1.4
Total	45-54	2,937	20.1	0.0	\$26,030	3.5	1.3
Total	55-64	1,389	9.5	0.0	\$23,413	3.5	1.2
Total	65-Up	451	3.1	0.0	\$20,131	3.1	1.1
Total	N/A	1,561	10.7	0.0	\$5,350	1.4	1.1
Total	Total	14,629	100.0	100.0	\$17,205	3.0	1.4

Note: Persons worked at any time during the year.

County Determination: Based on county of employment in which the person made the most money in the year.

N/A: Represents persons with demographic data that is unavailable.

N/A = Nonresidents, individuals for whom demographic data are not available.

Source: Demographics of Persons Working in Wyoming by County, Industry, Age, & Gender, 2000-2017.
Research & Planning, Wyoming Department of Workforce Services.

Prepared by M. Moore, Research & Planning, WY DWS, 6/12/18.

Average Earnings by Age and Gender with Place of Work in Sheridan County in 2002

Gender	Age Group	Number	Age Percent	Gender Percent	Average Annual Wage	Average Quarters Worked	Average Annual Employers
Women	00-19	822	11.9	0.0	\$3,471	2.7	1.7
Women	20-24	759	11.0	0.0	\$8,116	3.0	1.8
Women	25-34	1,155	16.7	0.0	\$15,486	3.3	1.6
Women	35-44	1,449	21.0	0.0	\$19,295	3.5	1.4
Women	45-54	1,701	24.7	0.0	\$22,208	3.6	1.3
Women	55-64	794	11.5	0.0	\$19,379	3.6	1.2
Women	65-Up	213	3.1	0.0	\$9,415	3.3	1.1
Women	N/A	3	0.0	0.0	\$18,438	2.0	1.0
Women	Total	6,896	100.0	46.8	\$15,963	3.3	1.5
Men	00-19	765	11.7	0.0	\$3,958	2.6	1.6
Men	20-24	840	12.8	0.0	\$10,837	3.0	1.9
Men	25-34	1,314	20.0	0.0	\$20,935	3.3	1.6
Men	35-44	1,250	19.0	0.0	\$29,007	3.4	1.3
Men	45-54	1,390	21.2	0.0	\$35,039	3.5	1.2
Men	55-64	737	11.2	0.0	\$32,578	3.4	1.2
Men	65-Up	263	4.0	0.0	\$33,637	3.0	1.1
Men	N/A	5	0.1	0.0	\$14,645	2.2	1.0
Men	Total	6,564	100.0	44.6	\$24,000	3.2	1.5
N/A	N/A	1,261	100.0	0.0	\$5,193	1.5	1.1
N/A	Total	1,261	100.0	8.6	\$5,193	1.5	1.1
Total	00-19	1,587	10.8	0.0	\$3,706	2.7	1.7
Total	20-24	1,599	10.9	0.0	\$9,546	3.0	1.9
Total	25-34	2,469	16.8	0.0	\$18,386	3.3	1.6
Total	35-44	2,699	18.3	0.0	\$23,793	3.4	1.4
Total	45-54	3,091	21.0	0.0	\$27,978	3.5	1.3
Total	55-64	1,531	10.4	0.0	\$25,733	3.5	1.2
Total	65-Up	476	3.2	0.0	\$22,798	3.2	1.1
Total	N/A	1,269	8.6	0.0	\$5,261	1.5	1.1
Total	Total	14,721	100.0	100.0	\$18,624	3.1	1.4

Note: Persons worked at any time during the year.

County Determination: Based on county of employment in which the person made the most money in the year.

N/A: Represents persons with demographic data that is unavailable.

N/A = Nonresidents, individuals for whom demographic data are not available.

Source: Demographics of Persons Working in Wyoming by County, Industry, Age, & Gender, 2000-2017.

Research & Planning, Wyoming Department of Workforce Services.

Prepared by M. Moore, Research & Planning, WY DWS, 6/12/18.

Average Earnings by Age and Gender with Place of Work in Sheridan County in 2003

Gender	Age Group	Number	Age Percent	Gender Percent	Average Annual Wage	Average Quarters Worked	Average Annual Employers
Women	00-19	805	11.5	0.0	\$4,660	2.7	1.7
Women	20-24	818	11.7	0.0	\$8,403	3.0	1.9
Women	25-34	1,163	16.6	0.0	\$15,299	3.3	1.6
Women	35-44	1,414	20.2	0.0	\$20,220	3.5	1.4
Women	45-54	1,707	24.4	0.0	\$23,377	3.6	1.3
Women	55-64	860	12.3	0.0	\$20,879	3.6	1.2
Women	65-Up	239	3.4	0.0	\$9,968	3.4	1.1
Women	N/A	3	0.0	0.0	\$18,473	2.0	1.0
Women	Total	7,009	100.0	46.5	\$16,737	3.3	1.5
Men	00-19	716	10.7	0.0	\$3,966	2.6	1.6
Men	20-24	888	13.3	0.0	\$10,456	3.0	1.8
Men	25-34	1,337	20.1	0.0	\$21,315	3.3	1.6
Men	35-44	1,236	18.5	0.0	\$29,381	3.4	1.3
Men	45-54	1,395	20.9	0.0	\$35,034	3.5	1.2
Men	55-64	801	12.0	0.0	\$34,216	3.4	1.2
Men	65-Up	290	4.4	0.0	\$26,296	3.1	1.1
Men	N/A	2	0.0	0.0	\$20,023	3.0	1.0
Men	Total	6,665	100.0	44.3	\$24,138	3.2	1.4
N/A	N/A	1,385	100.0	0.0	\$5,028	1.5	1.1
N/A	Total	1,385	100.0	9.2	\$5,028	1.5	1.1
Total	00-19	1,521	10.1	0.0	\$4,334	2.7	1.6
Total	20-24	1,706	11.3	0.0	\$9,471	3.0	1.8
Total	25-34	2,500	16.6	0.0	\$18,516	3.3	1.6
Total	35-44	2,650	17.6	0.0	\$24,493	3.4	1.4
Total	45-54	3,102	20.6	0.0	\$28,619	3.5	1.3
Total	55-64	1,661	11.0	0.0	\$27,311	3.5	1.2
Total	65-Up	529	3.5	0.0	\$18,919	3.2	1.1
Total	N/A	1,390	9.2	0.0	\$5,079	1.5	1.1
Total	Total	15,059	100.0	100.0	\$18,936	3.1	1.4

Note: Persons worked at any time during the year.

County Determination: Based on county of employment in which the person made the most money in the year.

N/A: Represents persons with demographic data that is unavailable.

N/A = Nonresidents, individuals for whom demographic data are not available.

Source: Demographics of Persons Working in Wyoming by County, Industry, Age, & Gender, 2000-2017.

Research & Planning, Wyoming Department of Workforce Services.

Prepared by M. Moore, Research & Planning, WY DWS, 6/12/18.

Average Earnings by Age and Gender with Place of Work in Sheridan County in 2004

Gender	Age Group	Number	Age Percent	Gender Percent	Average Annual Wage	Average Quarters Worked	Average Annual Employers
Women	00-19	750	10.7	0.0	\$3,419	2.7	1.6
Women	20-24	831	11.8	0.0	\$8,716	3.0	1.8
Women	25-34	1,157	16.5	0.0	\$16,145	3.4	1.6
Women	35-44	1,362	19.4	0.0	\$20,717	3.5	1.4
Women	45-54	1,713	24.4	0.0	\$24,250	3.6	1.3
Women	55-64	942	13.4	0.0	\$22,095	3.5	1.2
Women	65-Up	268	3.8	0.0	\$10,858	3.4	1.1
Women	N/A	1	0.0	0.0	\$50,674	4.0	1.0
Women	Total	7,024	100.0	47.2	\$17,371	3.4	1.5
Men	00-19	633	9.4	0.0	\$3,917	2.6	1.6
Men	20-24	871	13.0	0.0	\$11,657	3.0	1.8
Men	25-34	1,368	20.4	0.0	\$23,461	3.3	1.5
Men	35-44	1,265	18.9	0.0	\$32,515	3.5	1.3
Men	45-54	1,414	21.1	0.0	\$36,715	3.5	1.3
Men	55-64	841	12.5	0.0	\$36,266	3.5	1.2
Men	65-Up	310	4.6	0.0	\$23,518	3.2	1.1
Men	N/A	3	0.0	0.0	\$5,330	1.7	1.0
Men	Total	6,705	100.0	45.0	\$26,187	3.3	1.4
N/A	N/A	1,164	100.0	0.0	\$6,475	1.7	1.1
N/A	Total	1,164	100.0	7.8	\$6,475	1.7	1.1
Total	00-19	1,383	9.3	0.0	\$3,647	2.6	1.6
Total	20-24	1,702	11.4	0.0	\$10,221	3.0	1.8
Total	25-34	2,525	17.0	0.0	\$20,109	3.3	1.5
Total	35-44	2,627	17.6	0.0	\$26,398	3.5	1.4
Total	45-54	3,127	21.0	0.0	\$29,886	3.6	1.3
Total	55-64	1,783	12.0	0.0	\$28,779	3.5	1.2
Total	65-Up	578	3.9	0.0	\$17,648	3.3	1.1
Total	N/A	1,168	7.8	0.0	\$6,510	1.7	1.1
Total	Total	14,893	100.0	100.0	\$20,488	3.2	1.4

Note: Persons worked at any time during the year.

County Determination: Based on county of employment in which the person made the most money in the year.

N/A: Represents persons with demographic data that is unavailable.

N/A = Nonresidents, individuals for whom demographic data are not available.

Source: Demographics of Persons Working in Wyoming by County, Industry, Age, & Gender, 2000-2017.

Research & Planning, Wyoming Department of Workforce Services.

Prepared by M. Moore, Research & Planning, WY DWS, 6/12/18.

Average Earnings by Age and Gender with Place of Work in Sheridan County in 2005

Gender	Age Group	Number	Age Percent	Gender Percent	Average Annual Wage	Average Quarters Worked	Average Annual Employers
Women	00-19	742	10.4	0.0	\$3,606	2.7	1.7
Women	20-24	824	11.6	0.0	\$8,822	3.0	1.9
Women	25-34	1,232	17.3	0.0	\$16,804	3.3	1.6
Women	35-44	1,301	18.3	0.0	\$22,004	3.5	1.5
Women	45-54	1,714	24.1	0.0	\$25,360	3.6	1.4
Women	55-64	1,009	14.2	0.0	\$23,796	3.6	1.3
Women	65-Up	281	4.0	0.0	\$11,375	3.4	1.1
Women	N/A	2	0.0	0.0	\$33,349	2.5	1.0
Women	Total	7,105	100.0	47.4	\$18,299	3.4	1.5
Men	00-19	668	9.8	0.0	\$3,884	2.6	1.5
Men	20-24	832	12.2	0.0	\$12,716	3.0	1.8
Men	25-34	1,386	20.3	0.0	\$25,650	3.3	1.6
Men	35-44	1,284	18.8	0.0	\$34,953	3.5	1.4
Men	45-54	1,447	21.2	0.0	\$39,500	3.5	1.3
Men	55-64	874	12.8	0.0	\$39,267	3.5	1.2
Men	65-Up	321	4.7	0.0	\$19,616	3.3	1.2
Men	N/A	1	0.0	0.0	\$8,613	3.0	1.0
Men	Total	6,813	100.0	45.5	\$28,091	3.3	1.4
N/A	N/A	1,058	100.0	0.0	\$7,790	1.9	1.1
N/A	Total	1,058	100.0	7.1	\$7,790	1.9	1.1
Total	00-19	1,410	9.4	0.0	\$3,738	2.6	1.6
Total	20-24	1,656	11.1	0.0	\$10,778	3.0	1.8
Total	25-34	2,618	17.5	0.0	\$21,487	3.3	1.6
Total	35-44	2,585	17.3	0.0	\$28,436	3.5	1.4
Total	45-54	3,161	21.1	0.0	\$31,833	3.6	1.3
Total	55-64	1,883	12.6	0.0	\$30,976	3.5	1.2
Total	65-Up	602	4.0	0.0	\$15,769	3.3	1.1
Total	N/A	1,061	7.1	0.0	\$7,839	1.9	1.1
Total	Total	14,976	100.0	100.0	\$22,011	3.2	1.4

Note: Persons worked at any time during the year.

County Determination: Based on county of employment in which the person made the most money in the year.

N/A: Represents persons with demographic data that is unavailable.

N/A = Nonresidents, individuals for whom demographic data are not available.

Source: Demographics of Persons Working in Wyoming by County, Industry, Age, & Gender, 2000-2017.

Research & Planning, Wyoming Department of Workforce Services.

Prepared by M. Moore, Research & Planning, WY DWS, 6/12/18.

Average Earnings by Age and Gender with Place of Work in Sheridan County in 2006

Gender	Age Group	Number	Age Percent	Gender Percent	Average Annual Wage	Average Quarters Worked	Average Annual Employers
Women	00-19	736	10.1	0.0	\$3,989	2.8	1.8
Women	20-24	849	11.7	0.0	\$9,938	3.1	2.0
Women	25-34	1,260	17.3	0.0	\$18,468	3.3	1.6
Women	35-44	1,296	17.8	0.0	\$24,056	3.5	1.5
Women	45-54	1,720	23.6	0.0	\$26,870	3.6	1.3
Women	55-64	1,098	15.1	0.0	\$25,083	3.6	1.3
Women	65-Up	314	4.3	0.0	\$12,352	3.4	1.2
Women	N/A	1	0.0	0.0	\$59,855	4.0	1.0
Women	Total	7,274	100.0	46.5	\$19,730	3.4	1.5
Men	00-19	713	9.8	0.0	\$4,428	2.5	1.6
Men	20-24	867	12.0	0.0	\$14,609	3.0	1.9
Men	25-34	1,502	20.7	0.0	\$28,908	3.4	1.6
Men	35-44	1,321	18.2	0.0	\$38,734	3.5	1.4
Men	45-54	1,541	21.3	0.0	\$43,294	3.5	1.3
Men	55-64	947	13.1	0.0	\$42,881	3.5	1.2
Men	65-Up	354	4.9	0.0	\$24,155	3.2	1.2
Men	N/A	1	0.0	0.0	\$16,625	4.0	1.0
Men	Total	7,246	100.0	46.3	\$31,232	3.3	1.5
N/A	N/A	1,131	100.0	0.0	\$9,268	2.0	1.2
N/A	Total	1,131	100.0	7.2	\$9,268	2.0	1.2
Total	00-19	1,449	9.3	0.0	\$4,205	2.7	1.7
Total	20-24	1,716	11.0	0.0	\$12,298	3.1	1.9
Total	25-34	2,762	17.6	0.0	\$24,145	3.4	1.6
Total	35-44	2,617	16.7	0.0	\$31,465	3.5	1.4
Total	45-54	3,261	20.8	0.0	\$34,631	3.5	1.3
Total	55-64	2,045	13.1	0.0	\$33,325	3.5	1.2
Total	65-Up	668	4.3	0.0	\$18,607	3.3	1.2
Total	N/A	1,133	7.2	0.0	\$9,319	2.0	1.2
Total	Total	15,651	100.0	100.0	\$24,299	3.2	1.5

Note: Persons worked at any time during the year.

County Determination: Based on county of employment in which the person made the most money in the year.

N/A: Represents persons with demographic data that is unavailable.

N/A = Nonresidents, individuals for whom demographic data are not available.

Source: Demographics of Persons Working in Wyoming by County, Industry, Age, & Gender, 2000-2017.

Research & Planning, Wyoming Department of Workforce Services.

Prepared by M. Moore, Research & Planning, WY DWS, 6/12/18.

Average Earnings by Age and Gender with Place of Work in Sheridan County in 2007

Gender	Age Group	Number	Age Percent	Gender Percent	Average Annual Wage	Average Quarters Worked	Average Annual Employers
Women	00-19	766	10.1	0.0	\$4,195	2.7	1.8
Women	20-24	892	11.8	0.0	\$10,766	3.1	1.9
Women	25-34	1,367	18.0	0.0	\$19,710	3.3	1.6
Women	35-44	1,323	17.5	0.0	\$25,694	3.5	1.5
Women	45-54	1,693	22.3	0.0	\$29,190	3.6	1.4
Women	55-64	1,188	15.7	0.0	\$27,484	3.6	1.2
Women	65-Up	346	4.6	0.0	\$13,708	3.3	1.1
Women	N/A	1	0.0	0.0	\$65,303	4.0	1.0
Women	Total	7,576	100.0	45.7	\$21,203	3.4	1.5
Men	00-19	744	9.7	0.0	\$4,591	2.5	1.6
Men	20-24	892	11.7	0.0	\$16,001	3.0	1.8
Men	25-34	1,602	20.9	0.0	\$31,259	3.3	1.6
Men	35-44	1,384	18.1	0.0	\$41,554	3.4	1.4
Men	45-54	1,625	21.2	0.0	\$46,905	3.5	1.3
Men	55-64	1,023	13.4	0.0	\$44,158	3.5	1.2
Men	65-Up	383	5.0	0.0	\$23,793	3.2	1.2
Men	N/A	3	0.0	0.0	\$1,335	1.0	1.0
Men	Total	7,656	100.0	46.2	\$33,410	3.3	1.4
N/A	N/A	1,340	100.0	0.0	\$10,592	2.0	1.2
N/A	Total	1,340	100.0	8.1	\$10,592	2.0	1.2
Total	00-19	1,510	9.1	0.0	\$4,390	2.6	1.7
Total	20-24	1,784	10.8	0.0	\$13,384	3.0	1.8
Total	25-34	2,969	17.9	0.0	\$25,942	3.3	1.6
Total	35-44	2,707	16.3	0.0	\$33,803	3.5	1.4
Total	45-54	3,318	20.0	0.0	\$37,866	3.5	1.3
Total	55-64	2,211	13.3	0.0	\$35,199	3.5	1.2
Total	65-Up	729	4.4	0.0	\$19,006	3.3	1.2
Total	N/A	1,344	8.1	0.0	\$10,612	2.0	1.2
Total	Total	16,572	100.0	100.0	\$25,984	3.2	1.5

Note: Persons worked at any time during the year.

County Determination: Based on county of employment in which the person made the most money in the year.

N/A: Represents persons with demographic data that is unavailable.

N/A = Nonresidents, individuals for whom demographic data are not available.

Source: Demographics of Persons Working in Wyoming by County, Industry, Age, & Gender, 2000-2017.
Research & Planning, Wyoming Department of Workforce Services.

Prepared by M. Moore, Research & Planning, WY DWS, 6/12/18.

Average Earnings by Age and Gender with Place of Work in Sheridan County in 2008

Gender	Age Group	Number	Age Percent	Gender Percent	Average Annual Wage	Average Quarters Worked	Average Annual Employers
Women	00-19	742	9.6	0.0	\$4,786	2.8	1.8
Women	20-24	885	11.5	0.0	\$11,077	3.0	1.8
Women	25-34	1,441	18.7	0.0	\$22,045	3.3	1.5
Women	35-44	1,319	17.1	0.0	\$27,792	3.5	1.5
Women	45-54	1,703	22.1	0.0	\$31,256	3.6	1.4
Women	55-64	1,260	16.3	0.0	\$29,984	3.6	1.3
Women	65-Up	367	4.8	0.0	\$15,371	3.4	1.2
Women	N/A	2	0.0	0.0	\$9,821	2.5	1.0
Women	Total	7,719	100.0	45.9	\$23,118	3.4	1.5
Men	00-19	730	9.4	0.0	\$5,113	2.6	1.6
Men	20-24	920	11.8	0.0	\$16,781	3.0	1.8
Men	25-34	1,627	20.9	0.0	\$34,187	3.4	1.5
Men	35-44	1,407	18.1	0.0	\$43,926	3.5	1.4
Men	45-54	1,577	20.3	0.0	\$48,674	3.5	1.3
Men	55-64	1,118	14.4	0.0	\$48,423	3.5	1.2
Men	65-Up	392	5.0	0.0	\$26,257	3.3	1.2
Men	N/A	1	0.0	0.0	\$105	1.0	1.0
Men	Total	7,772	100.0	46.2	\$35,742	3.3	1.4
N/A	N/A	1,339	100.0	0.0	\$10,796	1.9	1.3
N/A	Total	1,339	100.0	8.0	\$10,796	1.9	1.3
Total	00-19	1,472	8.7	0.0	\$4,948	2.7	1.7
Total	20-24	1,805	10.7	0.0	\$13,984	3.0	1.8
Total	25-34	3,068	18.2	0.0	\$28,484	3.4	1.5
Total	35-44	2,726	16.2	0.0	\$36,119	3.5	1.4
Total	45-54	3,280	19.5	0.0	\$39,630	3.6	1.3
Total	55-64	2,378	14.1	0.0	\$38,653	3.5	1.2
Total	65-Up	759	4.5	0.0	\$20,993	3.4	1.2
Total	N/A	1,342	8.0	0.0	\$10,787	1.9	1.3
Total	Total	16,830	100.0	100.0	\$27,967	3.2	1.4

Note: Persons worked at any time during the year.

County Determination: Based on county of employment in which the person made the most money in the year.

N/A: Represents persons with demographic data that is unavailable.

N/A = Nonresidents, individuals for whom demographic data are not available.

Source: Demographics of Persons Working in Wyoming by County, Industry, Age, & Gender, 2000-2017.
Research & Planning, Wyoming Department of Workforce Services.

Prepared by M. Moore, Research & Planning, WY DWS, 6/12/18.

Average Earnings by Age and Gender with Place of Work in Sheridan County in 2009

Gender	Age Group	Number	Age Percent	Gender Percent	Average Annual Wage	Average Quarters Worked	Average Annual Employers
Women	00-19	631	8.4	0.0	\$4,416	2.8	1.5
Women	20-24	894	11.9	0.0	\$11,255	3.0	1.7
Women	25-34	1,389	18.5	0.0	\$22,613	3.4	1.5
Women	35-44	1,294	17.3	0.0	\$28,194	3.5	1.3
Women	45-54	1,636	21.8	0.0	\$31,816	3.6	1.3
Women	55-64	1,266	16.9	0.0	\$30,220	3.6	1.2
Women	65-Up	382	5.1	0.0	\$15,760	3.4	1.1
Women	N/A	3	0.0	0.0	\$13,928	2.7	1.0
Women	Total	7,495	100.0	47.0	\$23,631	3.4	1.4
Men	00-19	596	8.1	0.0	\$4,745	2.5	1.4
Men	20-24	818	11.1	0.0	\$14,547	3.0	1.5
Men	25-34	1,608	21.8	0.0	\$31,387	3.3	1.4
Men	35-44	1,358	18.4	0.0	\$42,302	3.4	1.3
Men	45-54	1,511	20.4	0.0	\$45,463	3.4	1.2
Men	55-64	1,113	15.1	0.0	\$46,681	3.5	1.2
Men	65-Up	387	5.2	0.0	\$25,181	3.2	1.1
Men	N/A	1	0.0	0.0	\$6,058	1.0	1.0
Men	Total	7,392	100.0	46.3	\$34,232	3.3	1.3
N/A	N/A	1,073	100.0	0.0	\$9,332	1.9	1.2
N/A	Total	1,073	100.0	6.7	\$9,332	1.9	1.2
Total	00-19	1,227	7.7	0.0	\$4,576	2.7	1.5
Total	20-24	1,712	10.7	0.0	\$12,828	3.0	1.6
Total	25-34	2,997	18.8	0.0	\$27,321	3.3	1.4
Total	35-44	2,652	16.6	0.0	\$35,418	3.5	1.3
Total	45-54	3,147	19.7	0.0	\$38,368	3.5	1.3
Total	55-64	2,379	14.9	0.0	\$37,921	3.6	1.2
Total	65-Up	769	4.8	0.0	\$20,501	3.3	1.1
Total	N/A	1,077	6.7	0.0	\$9,342	1.9	1.2
Total	Total	15,960	100.0	100.0	\$27,580	3.2	1.3

Note: Persons worked at any time during the year.

County Determination: Based on county of employment in which the person made the most money in the year.

N/A: Represents persons with demographic data that is unavailable.

N/A = Nonresidents, individuals for whom demographic data are not available.

Source: Demographics of Persons Working in Wyoming by County, Industry, Age, & Gender, 2000-2017.

Research & Planning, Wyoming Department of Workforce Services.

Prepared by M. Moore, Research & Planning, WY DWS, 6/12/18.

Average Earnings by Age and Gender with Place of Work in Sheridan County in 2010

Gender	Age Group	Number	Age Percent	Gender Percent	Average Annual Wage	Average Quarters Worked	Average Annual Employers
Women	00-19	571	7.8	0.0	\$4,024	2.6	1.5
Women	20-24	840	11.5	0.0	\$10,803	3.1	1.7
Women	25-34	1,408	19.2	0.0	\$22,005	3.4	1.5
Women	35-44	1,254	17.1	0.0	\$28,704	3.5	1.4
Women	45-54	1,605	21.9	0.0	\$31,414	3.6	1.3
Women	55-64	1,288	17.6	0.0	\$31,500	3.6	1.2
Women	65-Up	369	5.0	0.0	\$17,288	3.5	1.2
Women	N/A	1	0.0	0.0	\$7,633	2.0	1.0
Women	Total	7,336	100.0	47.8	\$23,954	3.4	1.4
Men	00-19	509	7.2	0.0	\$4,652	2.6	1.4
Men	20-24	806	11.3	0.0	\$13,238	2.9	1.6
Men	25-34	1,509	21.2	0.0	\$31,846	3.3	1.4
Men	35-44	1,336	18.8	0.0	\$43,567	3.5	1.3
Men	45-54	1,421	20.0	0.0	\$46,902	3.5	1.2
Men	55-64	1,136	16.0	0.0	\$48,083	3.5	1.2
Men	65-Up	386	5.4	0.0	\$25,569	3.3	1.2
Men	Total	7,103	100.0	46.2	\$35,258	3.3	1.3
N/A	N/A	923	100.0	0.0	\$9,826	2.0	1.1
N/A	Total	923	100.0	6.0	\$9,826	2.0	1.1
Total	00-19	1,080	7.0	0.0	\$4,320	2.6	1.4
Total	20-24	1,646	10.7	0.0	\$11,996	3.0	1.7
Total	25-34	2,917	19.0	0.0	\$27,096	3.4	1.4
Total	35-44	2,590	16.9	0.0	\$36,371	3.5	1.3
Total	45-54	3,026	19.7	0.0	\$38,687	3.6	1.3
Total	55-64	2,424	15.8	0.0	\$39,271	3.6	1.2
Total	65-Up	755	4.9	0.0	\$21,522	3.4	1.2
Total	N/A	924	6.0	0.0	\$9,824	2.0	1.1
Total	Total	15,362	100.0	100.0	\$28,332	3.3	1.3

Note: Persons worked at any time during the year.

County Determination: Based on county of employment in which the person made the most money in the year.

N/A: Represents persons with demographic data that is unavailable.

N/A = Nonresidents, individuals for whom demographic data are not available.

Source: Demographics of Persons Working in Wyoming by County, Industry, Age, & Gender, 2000-2017.
Research & Planning, Wyoming Department of Workforce Services.

Prepared by M. Moore, Research & Planning, WY DWS, 6/12/18.

Average Earnings by Age and Gender with Place of Work in Sheridan County in 2011

Gender	Age Group	Number	Age Percent	Gender Percent	Average Annual Wage	Average Quarters Worked	Average Annual Employers
Women	00-19	549	7.5	0.0	\$4,085	2.7	1.5
Women	20-24	794	10.9	0.0	\$11,157	3.1	1.7
Women	25-34	1,399	19.2	0.0	\$22,288	3.4	1.5
Women	35-44	1,267	17.4	0.0	\$29,752	3.5	1.4
Women	45-54	1,519	20.9	0.0	\$31,056	3.6	1.3
Women	55-64	1,349	18.5	0.0	\$31,804	3.6	1.2
Women	65-Up	400	5.5	0.0	\$16,727	3.4	1.2
Women	Total	7,277	100.0	47.6	\$24,288	3.4	1.4
Men	00-19	535	7.5	0.0	\$4,489	2.5	1.4
Men	20-24	770	10.8	0.0	\$13,577	2.9	1.6
Men	25-34	1,457	20.5	0.0	\$31,792	3.3	1.4
Men	35-44	1,378	19.4	0.0	\$44,085	3.5	1.3
Men	45-54	1,357	19.1	0.0	\$48,046	3.5	1.2
Men	55-64	1,194	16.8	0.0	\$45,929	3.5	1.2
Men	65-Up	418	5.9	0.0	\$27,285	3.2	1.1
Men	Total	7,109	100.0	46.5	\$35,359	3.3	1.3
N/A	N/A	903	100.0	0.0	\$10,505	2.0	1.1
N/A	Total	903	100.0	5.9	\$10,505	2.0	1.1
Total	00-19	1,084	7.1	0.0	\$4,284	2.6	1.5
Total	20-24	1,564	10.2	0.0	\$12,349	3.0	1.7
Total	25-34	2,856	18.7	0.0	\$27,137	3.4	1.4
Total	35-44	2,645	17.3	0.0	\$37,219	3.5	1.3
Total	45-54	2,876	18.8	0.0	\$39,072	3.6	1.3
Total	55-64	2,543	16.6	0.0	\$38,436	3.6	1.2
Total	65-Up	818	5.4	0.0	\$22,122	3.3	1.1
Total	N/A	903	5.9	0.0	\$10,505	2.0	1.1
Total	Total	15,289	100.0	100.0	\$28,622	3.3	1.3

Note: Persons worked at any time during the year.

County Determination: Based on county of employment in which the person made the most money in the year.

N/A: Represents persons with demographic data that is unavailable.

N/A = Nonresidents, individuals for whom demographic data are not available.

Source: Demographics of Persons Working in Wyoming by County, Industry, Age, & Gender, 2000-2017.

Research & Planning, Wyoming Department of Workforce Services.

Prepared by M. Moore, Research & Planning, WY DWS, 6/12/18.

Average Earnings by Age and Gender with Place of Work in Sheridan County in 2012

Gender	Age Group	Number	Age Percent	Gender Percent	Average Annual Wage	Average Quarters Worked	Average Annual Employers
Women	00-19	577	7.8	0.0	\$4,234	2.6	1.6
Women	20-24	812	11.0	0.0	\$10,973	3.0	1.8
Women	25-34	1,420	19.3	0.0	\$23,142	3.4	1.5
Women	35-44	1,297	17.6	0.0	\$31,036	3.5	1.4
Women	45-54	1,453	19.7	0.0	\$31,623	3.6	1.3
Women	55-64	1,403	19.1	0.0	\$32,749	3.6	1.2
Women	65-Up	395	5.4	0.0	\$18,138	3.4	1.1
Women	N/A	1	0.0	0.0	\$725	1.0	1.0
Women	Total	7,358	100.0	47.6	\$24,943	3.4	1.4
Men	00-19	544	7.6	0.0	\$4,788	2.6	1.5
Men	20-24	817	11.4	0.0	\$14,129	3.0	1.6
Men	25-34	1,467	20.4	0.0	\$30,551	3.3	1.4
Men	35-44	1,373	19.1	0.0	\$45,604	3.5	1.3
Men	45-54	1,314	18.3	0.0	\$49,165	3.5	1.2
Men	55-64	1,235	17.2	0.0	\$47,054	3.5	1.2
Men	65-Up	433	6.0	0.0	\$37,525	3.3	1.2
Men	N/A	1	0.0	0.0	\$3,225	1.0	1.0
Men	Total	7,184	100.0	46.5	\$36,268	3.3	1.3
N/A	N/A	921	100.0	0.0	\$12,340	2.0	1.1
N/A	Total	921	100.0	6.0	\$12,340	2.0	1.1
Total	00-19	1,121	7.2	0.0	\$4,503	2.6	1.5
Total	20-24	1,629	10.5	0.0	\$12,556	3.0	1.7
Total	25-34	2,887	18.7	0.0	\$26,907	3.3	1.5
Total	35-44	2,670	17.3	0.0	\$38,527	3.5	1.4
Total	45-54	2,767	17.9	0.0	\$39,953	3.5	1.3
Total	55-64	2,638	17.1	0.0	\$39,446	3.6	1.2
Total	65-Up	828	5.4	0.0	\$28,276	3.4	1.1
Total	N/A	923	6.0	0.0	\$12,318	2.0	1.1
Total	Total	15,463	100.0	100.0	\$29,454	3.3	1.4

Note: Persons worked at any time during the year.

County Determination: Based on county of employment in which the person made the most money in the year.

N/A: Represents persons with demographic data that is unavailable.

N/A = Nonresidents, individuals for whom demographic data are not available.

Source: Demographics of Persons Working in Wyoming by County, Industry, Age, & Gender, 2000-2017.

Research & Planning, Wyoming Department of Workforce Services.

Prepared by M. Moore, Research & Planning, WY DWS, 6/12/18.

Average Earnings by Age and Gender with Place of Work in Sheridan County in 2013

Gender	Age Group	Number	Age Percent	Gender Percent	Average Annual Wage	Average Quarters Worked	Average Annual Employers
Women	00-19	549	7.4	0.0	\$4,229	2.7	1.6
Women	20-24	816	11.1	0.0	\$11,762	3.1	1.7
Women	25-34	1,456	19.7	0.0	\$23,082	3.4	1.5
Women	35-44	1,290	17.5	0.0	\$31,246	3.5	1.4
Women	45-54	1,429	19.4	0.0	\$32,246	3.6	1.3
Women	55-64	1,395	18.9	0.0	\$32,615	3.6	1.2
Women	65-Up	440	6.0	0.0	\$17,844	3.3	1.1
Women	Total	7,375	100.0	47.2	\$25,121	3.4	1.4
Men	00-19	539	7.5	0.0	\$4,792	2.6	1.6
Men	20-24	827	11.5	0.0	\$14,550	3.1	1.7
Men	25-34	1,485	20.6	0.0	\$30,508	3.3	1.4
Men	35-44	1,370	19.0	0.0	\$45,398	3.5	1.3
Men	45-54	1,277	17.7	0.0	\$49,538	3.5	1.2
Men	55-64	1,227	17.0	0.0	\$49,612	3.6	1.2
Men	65-Up	481	6.7	0.0	\$29,765	3.2	1.2
Men	N/A	2	0.0	0.0	\$1,260	1.0	1.0
Men	Total	7,208	100.0	46.1	\$36,150	3.3	1.4
N/A	N/A	1,058	100.0	0.0	\$10,697	2.0	1.1
N/A	Total	1,058	100.0	6.8	\$10,697	2.0	1.1
Total	00-19	1,088	7.0	0.0	\$4,508	2.6	1.6
Total	20-24	1,643	10.5	0.0	\$13,165	3.1	1.7
Total	25-34	2,941	18.8	0.0	\$26,832	3.3	1.5
Total	35-44	2,660	17.0	0.0	\$38,535	3.5	1.4
Total	45-54	2,706	17.3	0.0	\$40,407	3.6	1.3
Total	55-64	2,622	16.8	0.0	\$40,569	3.6	1.2
Total	65-Up	921	5.9	0.0	\$24,070	3.3	1.1
Total	N/A	1,060	6.8	0.0	\$10,680	2.0	1.1
Total	Total	15,641	100.0	100.0	\$29,228	3.3	1.4

Note: Persons worked at any time during the year.

County Determination: Based on county of employment in which the person made the most money in the year.

N/A: Represents persons with demographic data that is unavailable.

N/A = Nonresidents, individuals for whom demographic data are not available.

Source: Demographics of Persons Working in Wyoming by County, Industry, Age, & Gender, 2000-2017.
Research & Planning, Wyoming Department of Workforce Services.

Prepared by M. Moore, Research & Planning, WY DWS, 6/12/18.

Average Earnings by Age and Gender with Place of Work in Sheridan County in 2014

Gender	Age Group	Number	Age Percent	Gender Percent	Average Annual Wage	Average Quarters Worked	Average Annual Employers
Women	00-19	591	8.0	0.0	\$4,652	2.7	1.7
Women	20-24	820	11.1	0.0	\$12,442	3.1	1.8
Women	25-34	1,456	19.6	0.0	\$24,209	3.4	1.5
Women	35-44	1,312	17.7	0.0	\$32,201	3.5	1.5
Women	45-54	1,376	18.6	0.0	\$33,440	3.6	1.3
Women	55-64	1,395	18.8	0.0	\$32,290	3.6	1.2
Women	65-Up	462	6.2	0.0	\$18,712	3.3	1.1
Women	N/A	3	0.0	0.0	\$5,379	1.3	1.0
Women	Total	7,415	100.0	46.2	\$25,646	3.4	1.4
Men	00-19	568	7.7	0.0	\$5,154	2.6	1.6
Men	20-24	881	11.9	0.0	\$16,235	3.1	1.7
Men	25-34	1,538	20.7	0.0	\$32,251	3.3	1.5
Men	35-44	1,379	18.6	0.0	\$47,131	3.5	1.3
Men	45-54	1,287	17.4	0.0	\$51,232	3.6	1.3
Men	55-64	1,263	17.0	0.0	\$49,907	3.5	1.2
Men	65-Up	497	6.7	0.0	\$32,337	3.3	1.1
Men	Total	7,413	100.0	46.1	\$37,349	3.3	1.4
N/A	N/A	1,235	100.0	0.0	\$11,387	1.9	1.1
N/A	Total	1,235	100.0	7.7	\$11,387	1.9	1.1
Total	00-19	1,159	7.2	0.0	\$4,898	2.7	1.6
Total	20-24	1,701	10.6	0.0	\$14,407	3.1	1.8
Total	25-34	2,994	18.6	0.0	\$28,340	3.4	1.5
Total	35-44	2,691	16.8	0.0	\$39,852	3.5	1.4
Total	45-54	2,663	16.6	0.0	\$42,039	3.6	1.3
Total	55-64	2,658	16.5	0.0	\$40,661	3.6	1.2
Total	65-Up	959	6.0	0.0	\$25,773	3.3	1.1
Total	N/A	1,238	7.7	0.0	\$11,372	1.9	1.1
Total	Total	16,063	100.0	100.0	\$29,951	3.3	1.4

Note: Persons worked at any time during the year.

County Determination: Based on county of employment in which the person made the most money in the year.

N/A: Represents persons with demographic data that is unavailable.

N/A = Nonresidents, individuals for whom demographic data are not available.

Source: Demographics of Persons Working in Wyoming by County, Industry, Age, & Gender, 2000-2017.

Research & Planning, Wyoming Department of Workforce Services.

Prepared by M. Moore, Research & Planning, WY DWS, 6/12/18.

Average Earnings by Age and Gender with Place of Work in Sheridan County in 2015

Gender	Age Group	Number	Age Percent	Gender Percent	Average Annual Wage	Average Quarters Worked	Average Annual Employers
Women	00-19	611	8.2	0.0	\$5,276	2.9	1.7
Women	20-24	776	10.4	0.0	\$12,671	3.1	1.8
Women	25-34	1,477	19.8	0.0	\$25,103	3.4	1.5
Women	35-44	1,358	18.2	0.0	\$32,971	3.5	1.4
Women	45-54	1,354	18.2	0.0	\$34,937	3.6	1.4
Women	55-64	1,389	18.6	0.0	\$33,876	3.6	1.2
Women	65-Up	481	6.5	0.0	\$20,915	3.4	1.1
Women	N/A	2	0.0	0.0	\$464	1.0	1.0
Women	Total	7,448	100.0	46.6	\$26,763	3.4	1.4
Men	00-19	556	7.5	0.0	\$5,701	2.7	1.6
Men	20-24	879	11.8	0.0	\$16,769	3.1	1.7
Men	25-34	1,527	20.6	0.0	\$32,344	3.3	1.5
Men	35-44	1,404	18.9	0.0	\$48,134	3.5	1.4
Men	45-54	1,275	17.2	0.0	\$50,939	3.5	1.3
Men	55-64	1,242	16.7	0.0	\$49,374	3.5	1.2
Men	65-Up	535	7.2	0.0	\$33,672	3.3	1.1
Men	Total	7,418	100.0	46.4	\$37,633	3.4	1.4
N/A	N/A	1,125	100.0	0.0	\$11,100	2.0	1.2
N/A	Total	1,125	100.0	7.0	\$11,100	2.0	1.2
Total	00-19	1,167	7.3	0.0	\$5,479	2.8	1.6
Total	20-24	1,655	10.3	0.0	\$14,848	3.1	1.8
Total	25-34	3,004	18.8	0.0	\$28,784	3.4	1.5
Total	35-44	2,762	17.3	0.0	\$40,679	3.5	1.4
Total	45-54	2,629	16.4	0.0	\$42,698	3.6	1.3
Total	55-64	2,631	16.5	0.0	\$41,192	3.6	1.2
Total	65-Up	1,016	6.4	0.0	\$27,632	3.3	1.1
Total	N/A	1,127	7.0	0.0	\$11,081	2.0	1.2
Total	Total	15,991	100.0	100.0	\$30,703	3.3	1.4

Note: Persons worked at any time during the year.

County Determination: Based on county of employment in which the person made the most money in the year.

N/A: Represents persons with demographic data that is unavailable.

N/A = Nonresidents, individuals for whom demographic data are not available.

Source: Demographics of Persons Working in Wyoming by County, Industry, Age, & Gender, 2000-2017.
Research & Planning, Wyoming Department of Workforce Services.

Prepared by M. Moore, Research & Planning, WY DWS, 6/12/18.

Average Earnings by Age and Gender with Place of Work in Sheridan County in 2016

Gender	Age Group	Number	Age Percent	Gender Percent	Average Annual Wage	Average Quarters Worked	Average Annual Employers
Women	00-19	601	8.2	0.0	\$4,975	2.8	1.5
Women	20-24	790	10.8	0.0	\$13,174	3.2	1.8
Women	25-34	1,460	20.0	0.0	\$26,187	3.5	1.5
Women	35-44	1,329	18.2	0.0	\$33,966	3.6	1.4
Women	45-54	1,290	17.6	0.0	\$35,799	3.6	1.3
Women	55-64	1,347	18.4	0.0	\$33,398	3.6	1.2
Women	65-Up	494	6.8	0.0	\$21,419	3.4	1.1
Women	N/A	3	0.0	0.0	\$4,792	1.3	1.0
Women	Total	7,314	100.0	47.0	\$27,144	3.4	1.4
Men	00-19	551	7.5	0.0	\$5,386	2.6	1.5
Men	20-24	842	11.5	0.0	\$16,500	3.1	1.6
Men	25-34	1,501	20.5	0.0	\$32,606	3.4	1.5
Men	35-44	1,434	19.6	0.0	\$48,455	3.5	1.3
Men	45-54	1,252	17.1	0.0	\$52,505	3.6	1.2
Men	55-64	1,211	16.6	0.0	\$49,150	3.6	1.2
Men	65-Up	526	7.2	0.0	\$33,648	3.4	1.1
Men	Total	7,317	100.0	47.0	\$38,027	3.4	1.3
N/A	N/A	943	100.0	0.0	\$12,373	2.0	1.2
N/A	Total	943	100.0	6.1	\$12,373	2.0	1.2
Total	00-19	1,152	7.4	0.0	\$5,171	2.7	1.5
Total	20-24	1,632	10.5	0.0	\$14,890	3.2	1.7
Total	25-34	2,961	19.0	0.0	\$29,441	3.4	1.5
Total	35-44	2,763	17.7	0.0	\$41,486	3.5	1.4
Total	45-54	2,542	16.3	0.0	\$44,027	3.6	1.3
Total	55-64	2,558	16.4	0.0	\$40,855	3.6	1.2
Total	65-Up	1,020	6.5	0.0	\$27,725	3.4	1.1
Total	N/A	946	6.1	0.0	\$12,349	2.0	1.2
Total	Total	15,574	100.0	100.0	\$31,363	3.3	1.4

Note: Persons worked at any time during the year.

County Determination: Based on county of employment in which the person made the most money in the year.

N/A: Represents persons with demographic data that is unavailable.

N/A = Nonresidents, individuals for whom demographic data are not available.

Source: Demographics of Persons Working in Wyoming by County, Industry, Age, & Gender, 2000-2017.

Research & Planning, Wyoming Department of Workforce Services.

Prepared by M. Moore, Research & Planning, WY DWS, 6/12/18.

Average Earnings by Age and Gender with Place of Work in Sheridan County in 2017

Gender	Age Group	Number	Age Percent	Gender Percent	Average Annual Wage	Average Quarters Worked	Average Annual Employers
Women	00-19	593	8.2	0.0	\$4,616	2.7	1.5
Women	20-24	754	10.5	0.0	\$13,016	3.1	1.7
Women	25-34	1,426	19.8	0.0	\$27,269	3.5	1.5
Women	35-44	1,343	18.7	0.0	\$34,160	3.6	1.4
Women	45-54	1,248	17.4	0.0	\$38,050	3.7	1.3
Women	55-64	1,309	18.2	0.0	\$33,861	3.6	1.2
Women	65-Up	512	7.1	0.0	\$20,231	3.3	1.2
Women	N/A	3	0.0	0.0	\$21,014	2.3	1.3
Women	Total	7,188	100.0	46.4	\$27,761	3.4	1.4
Men	00-19	531	7.5	0.0	\$5,278	2.6	1.5
Men	20-24	756	10.6	0.0	\$16,510	3.1	1.7
Men	25-34	1,455	20.5	0.0	\$32,864	3.4	1.5
Men	35-44	1,389	19.6	0.0	\$50,003	3.5	1.3
Men	45-54	1,224	17.2	0.0	\$53,342	3.6	1.3
Men	55-64	1,164	16.4	0.0	\$49,355	3.5	1.2
Men	65-Up	582	8.2	0.0	\$34,206	3.3	1.1
Men	N/A	3	0.0	0.0	\$2,226	2.3	1.0
Men	Total	7,104	100.0	45.9	\$38,740	3.4	1.3
N/A	N/A	1,188	100.0	0.0	\$11,785	2.1	1.2
N/A	Total	1,188	100.0	7.7	\$11,785	2.1	1.2
Total	00-19	1,124	7.3	0.0	\$4,929	2.7	1.5
Total	20-24	1,510	9.8	0.0	\$14,766	3.1	1.7
Total	25-34	2,881	18.6	0.0	\$30,094	3.4	1.5
Total	35-44	2,732	17.6	0.0	\$42,215	3.6	1.4
Total	45-54	2,472	16.0	0.0	\$45,622	3.6	1.3
Total	55-64	2,473	16.0	0.0	\$41,153	3.6	1.2
Total	65-Up	1,094	7.1	0.0	\$27,665	3.3	1.1
Total	N/A	1,194	7.7	0.0	\$11,784	2.1	1.2
Total	Total	15,480	100.0	100.0	\$31,573	3.3	1.4

Note: Persons worked at any time during the year.

County Determination: Based on county of employment in which the person made the most money in the year.

N/A: Represents persons with demographic data that is unavailable.

N/A = Nonresidents, individuals for whom demographic data are not available.

Source: Demographics of Persons Working in Wyoming by County, Industry, Age, & Gender, 2000-2017.
Research & Planning, Wyoming Department of Workforce Services.

Prepared by M. Moore, Research & Planning, WY DWS, 6/12/18.