

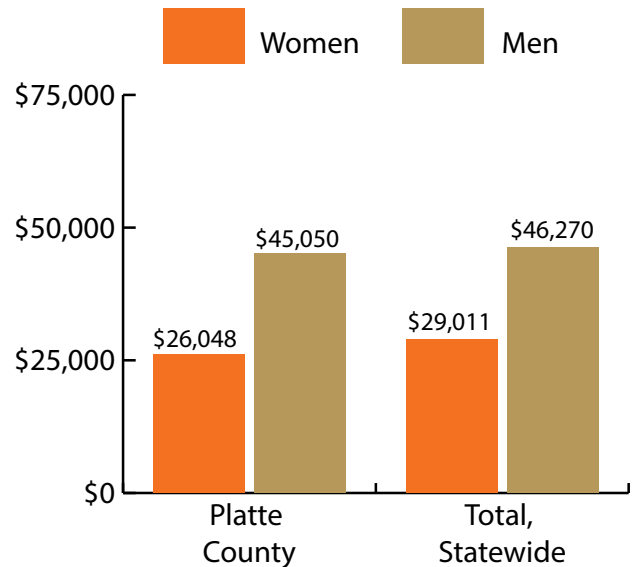
Platte County at a Glance, 2017

Demographics of Persons Working in Wyoming by County, Industry, Age, & Gender, 2000-2017

Table: Total Number of Persons Working in Platte County, WY, at Any Time by Gender and Age, 2016-2017

Gender	2016	2017	Change	
			N	%
Women	1,915	1,901	-14	-0.7
Men	2,292	2,241	-51	-2.2
Nonresidents	398	477	79	19.8
Total	4,605	4,619	14	0.3

Age	2016	2017	Change	
			N	%
00-19	319	276	-43	-13.5
20-24	342	312	-30	-8.8
25-34	781	757	-24	-3.1
35-44	738	793	55	7.5
45-54	868	852	-16	-1.8
55-64	815	804	-11	-1.3
65-Up	342	346	4	1.2
Nonresidents	400	479	79	19.8
Total	4,605	4,619	14	0.3



Women's Wages as % of Men's Wages

Platte County: 57.8%

Total: 62.7%

Figure: Average Annual Wages by Gender, 2017

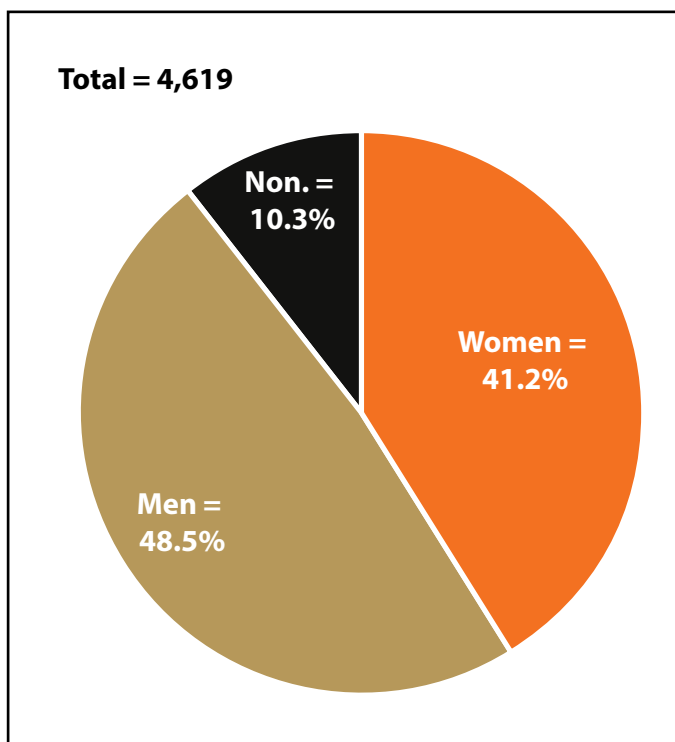


Figure: Persons Working by Gender, 2017

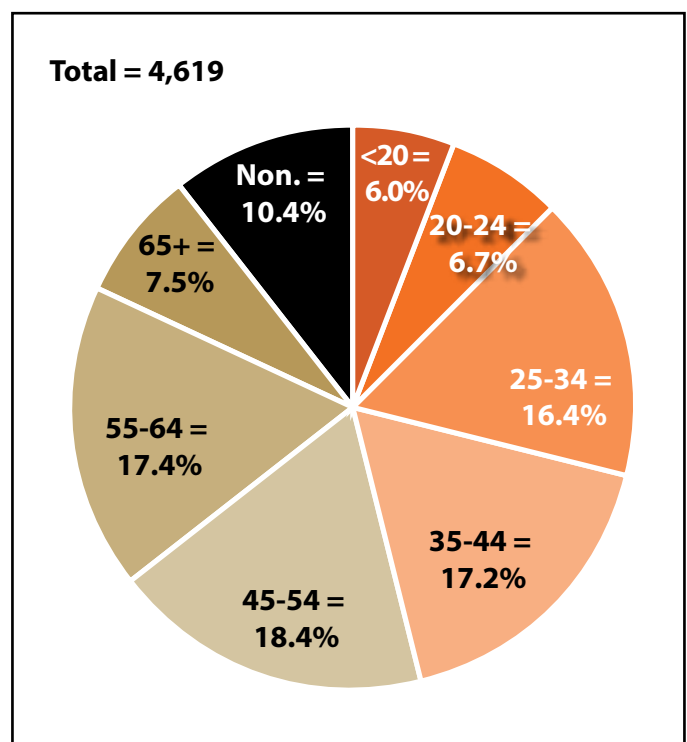


Figure: Persons Working by Age, 2017

Note: Nonresidents are individuals for whom demographic data are not available.

Source: Demographics of Persons Working in Wyoming by County, Industry, Age, & Gender, 2000-2017. Research & Planning, Wyoming Department of Workforce Services. Prepared by M. Moore, Research & Planning, WY DWS, 6/12/18.

Persons Working in Platte County by Gender and Age, 2000-2017

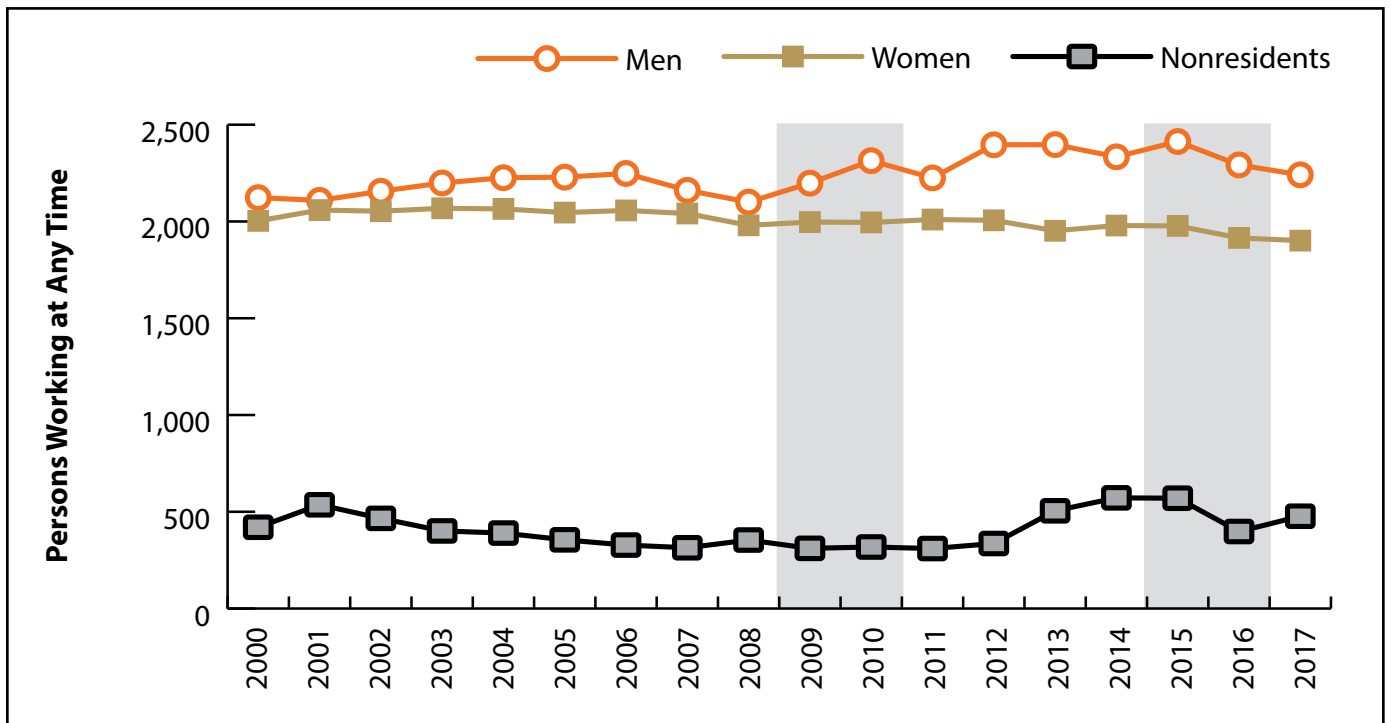


Figure: Persons Working in Platte County at Any Time by Gender, 2000-2017

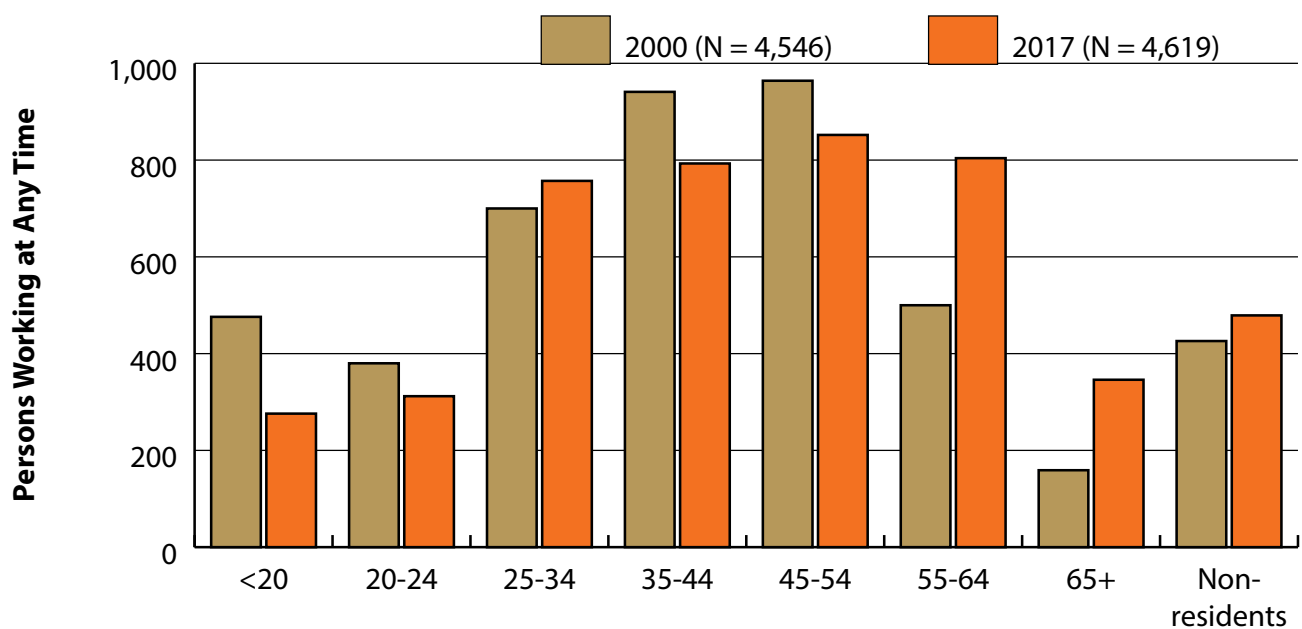


Figure: Persons Working in Platte County at Any Time by Age, 2000-2017

Note: Nonresidents are individuals for whom demographic data are not available.
 Shaded areas indicate periods of economic downturn: 2009Q1-2010Q1 and 2015Q2-2016Q4.
 Source: Demographics of Persons Working in Wyoming by County, Industry, Age, & Gender, 2000-2017. Research & Planning, Wyoming Department of Workforce Services. Prepared by M. Moore, Research & Planning, WY DWS, 6/12/18.

Wages for Persons Working in Platte County by Gender, 2000-2017

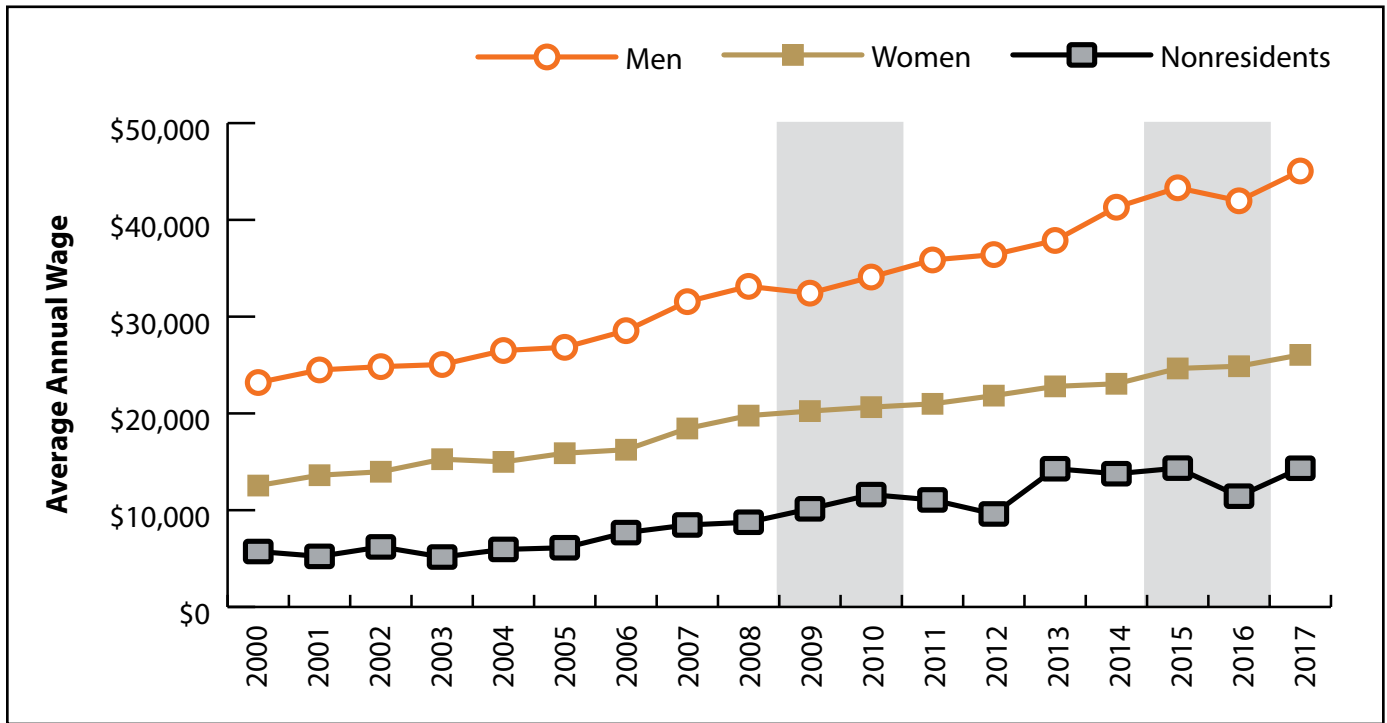


Figure: Average Annual Wage for Persons Working in Platte County at Any Time by Age, 2000-2017

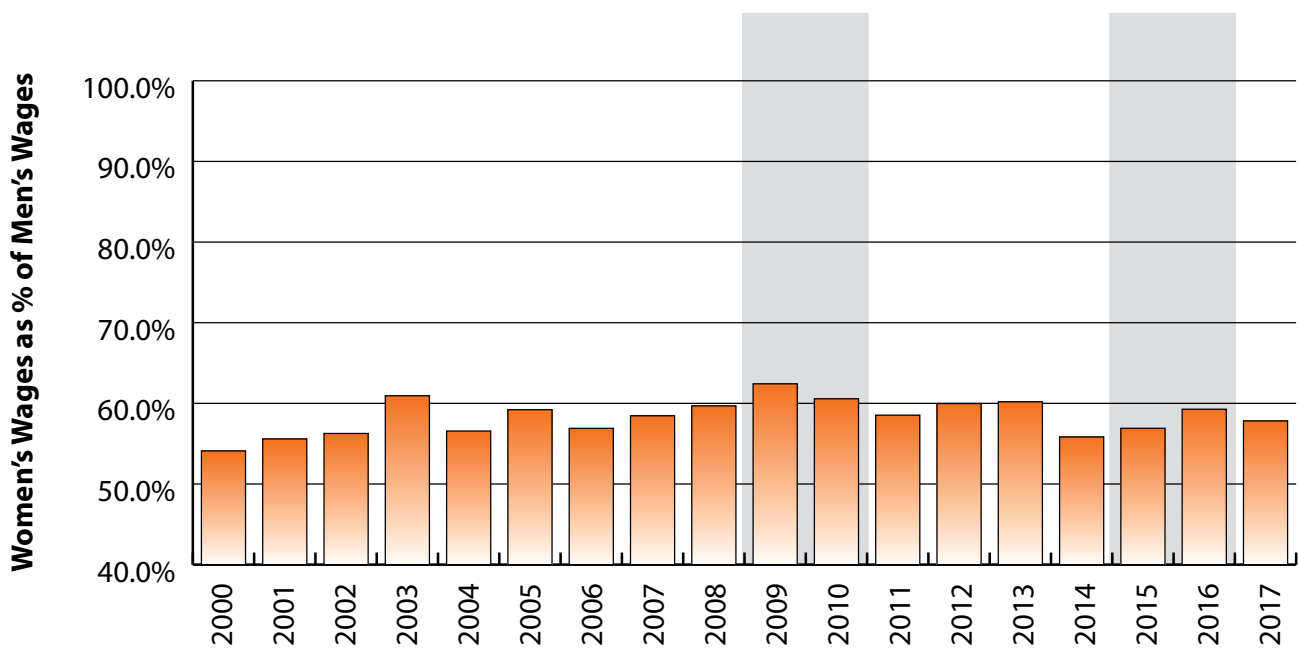


Figure: Women's Average Annual Wages as a Percent of Men's Wages for Persons Working in Platte County at Any Time by Age, 2000-2017

Note: Nonresidents are individuals for whom demographic data are not available.
 Shaded areas indicate periods of economic downturn: 2009Q1-2010Q1 and 2015Q2-2016Q4.
 Source: Demographics of Persons Working in Wyoming by County, Industry, Age, & Gender, 2000-2017. Research & Planning, Wyoming Department of Workforce Services. Prepared by M. Moore, Research & Planning, WY DWS, 6/12/18.

Average Earnings by Age and Gender with Place of Work in Platte County in 2000

Gender	Age Group	Number	Age Percent	Gender Percent	Average Annual Wage	Average Quarters Worked	Average Annual Employers
Women	00-19	253	12.6	0.0	\$2,749	2.6	1.6
Women	20-24	180	9.0	0.0	\$6,235	3.1	1.8
Women	25-34	325	16.2	0.0	\$11,648	3.3	1.6
Women	35-44	477	23.8	0.0	\$15,362	3.6	1.4
Women	45-54	470	23.5	0.0	\$18,488	3.6	1.3
Women	55-64	217	10.8	0.0	\$13,693	3.5	1.3
Women	65-Up	79	3.9	0.0	\$6,188	3.1	1.1
Women	N/A	2	0.1	0.0	\$23,472	2.5	1.0
Women	Total	2,003	100.0	44.1	\$12,545	3.3	1.4
Men	00-19	223	10.5	0.0	\$3,127	2.4	1.4
Men	20-24	200	9.4	0.0	\$9,152	2.9	1.8
Men	25-34	375	17.7	0.0	\$19,213	3.2	1.4
Men	35-44	464	21.9	0.0	\$28,741	3.4	1.4
Men	45-54	494	23.3	0.0	\$35,175	3.4	1.3
Men	55-64	283	13.3	0.0	\$27,181	3.3	1.2
Men	65-Up	80	3.8	0.0	\$11,280	3.0	1.2
Men	N/A	4	0.2	0.0	\$49,054	2.3	1.0
Men	Total	2,123	100.0	46.7	\$23,191	3.2	1.4
N/A	N/A	420	100.0	0.0	\$5,728	1.5	1.0
N/A	Total	420	100.0	9.2	\$5,728	1.5	1.0
Total	00-19	476	10.5	0.0	\$2,926	2.5	1.5
Total	20-24	380	8.4	0.0	\$7,770	3.0	1.8
Total	25-34	700	15.4	0.0	\$15,701	3.2	1.5
Total	35-44	941	20.7	0.0	\$21,959	3.5	1.4
Total	45-54	964	21.2	0.0	\$27,039	3.5	1.3
Total	55-64	500	11.0	0.0	\$21,327	3.4	1.2
Total	65-Up	159	3.5	0.0	\$8,750	3.0	1.2
Total	N/A	426	9.4	0.0	\$6,218	1.5	1.0
Total	Total	4,546	100.0	100.0	\$16,887	3.1	1.4

Note: Persons worked at any time during the year.

County Determination: Based on county of employment in which the person made the most money in the year.

N/A: Represents persons with demographic data that is unavailable.

N/A = Nonresidents, individuals for whom demographic data are not available.

Source: Demographics of Persons Working in Wyoming by County, Industry, Age, & Gender, 2000-2017.

Research & Planning, Wyoming Department of Workforce Services.

Prepared by M. Moore, Research & Planning, WY DWS, 6/12/18.

Average Earnings by Age and Gender with Place of Work in Platte County in 2001

Gender	Age Group	Number	Age Percent	Gender Percent	Average Annual Wage	Average Quarters Worked	Average Annual Employers
Women	00-19	258	12.5	0.0	\$3,356	2.5	1.7
Women	20-24	188	9.1	0.0	\$6,037	2.8	1.9
Women	25-34	318	15.4	0.0	\$12,438	3.3	1.5
Women	35-44	481	23.4	0.0	\$16,658	3.5	1.5
Women	45-54	494	24.0	0.0	\$20,218	3.6	1.3
Women	55-64	238	11.6	0.0	\$14,652	3.4	1.2
Women	65-Up	81	3.9	0.0	\$6,792	3.1	1.0
Women	N/A	1	0.0	0.0	\$36,916	4.0	1.0
Women	Total	2,059	100.0	43.8	\$13,614	3.3	1.5
Men	00-19	249	11.8	0.0	\$2,959	2.4	1.4
Men	20-24	196	9.3	0.0	\$10,528	2.9	1.9
Men	25-34	335	15.9	0.0	\$19,197	3.0	1.5
Men	35-44	469	22.2	0.0	\$29,968	3.2	1.3
Men	45-54	506	24.0	0.0	\$37,223	3.4	1.3
Men	55-64	267	12.7	0.0	\$31,073	3.3	1.2
Men	65-Up	87	4.1	0.0	\$14,212	3.1	1.1
Men	Total	2,109	100.0	44.8	\$24,492	3.1	1.4
N/A	N/A	536	100.0	0.0	\$5,227	1.3	1.1
N/A	Total	536	100.0	11.4	\$5,227	1.3	1.1
Total	00-19	507	10.8	0.0	\$3,161	2.4	1.6
Total	20-24	384	8.2	0.0	\$8,329	2.8	1.9
Total	25-34	653	13.9	0.0	\$15,905	3.2	1.5
Total	35-44	950	20.2	0.0	\$23,229	3.3	1.4
Total	45-54	1,000	21.3	0.0	\$28,823	3.5	1.3
Total	55-64	505	10.7	0.0	\$23,334	3.4	1.2
Total	65-Up	168	3.6	0.0	\$10,635	3.1	1.1
Total	N/A	537	11.4	0.0	\$5,286	1.3	1.1
Total	Total	4,704	100.0	100.0	\$17,535	3.0	1.4

Note: Persons worked at any time during the year.

County Determination: Based on county of employment in which the person made the most money in the year.

N/A: Represents persons with demographic data that is unavailable.

N/A = Nonresidents, individuals for whom demographic data are not available.

Source: Demographics of Persons Working in Wyoming by County, Industry, Age, & Gender, 2000-2017.
Research & Planning, Wyoming Department of Workforce Services.

Prepared by M. Moore, Research & Planning, WY DWS, 6/12/18.

Average Earnings by Age and Gender with Place of Work in Platte County in 2002

Gender	Age Group	Number	Age Percent	Gender Percent	Average Annual Wage	Average Quarters Worked	Average Annual Employers
Women	00-19	261	12.7	0.0	\$3,268	2.5	1.6
Women	20-24	177	8.6	0.0	\$6,196	2.8	1.7
Women	25-34	318	15.5	0.0	\$12,771	3.3	1.5
Women	35-44	459	22.4	0.0	\$16,497	3.5	1.4
Women	45-54	490	23.9	0.0	\$21,001	3.7	1.3
Women	55-64	263	12.8	0.0	\$16,037	3.5	1.3
Women	65-Up	83	4.0	0.0	\$6,683	3.1	1.1
Women	N/A	2	0.1	0.0	\$19,703	2.5	1.0
Women	Total	2,053	100.0	43.9	\$13,972	3.3	1.4
Men	00-19	235	10.9	0.0	\$3,327	2.5	1.5
Men	20-24	209	9.7	0.0	\$9,716	2.8	1.7
Men	25-34	357	16.6	0.0	\$20,145	3.1	1.5
Men	35-44	458	21.2	0.0	\$29,973	3.3	1.3
Men	45-54	516	23.9	0.0	\$36,573	3.3	1.2
Men	55-64	277	12.8	0.0	\$33,758	3.4	1.2
Men	65-Up	104	4.8	0.0	\$15,223	3.2	1.1
Men	Total	2,156	100.0	46.1	\$24,832	3.1	1.4
N/A	N/A	466	100.0	0.0	\$6,205	1.3	1.1
N/A	Total	466	100.0	10.0	\$6,205	1.3	1.1
Total	00-19	496	10.6	0.0	\$3,296	2.5	1.5
Total	20-24	386	8.3	0.0	\$8,102	2.8	1.7
Total	25-34	675	14.4	0.0	\$16,671	3.2	1.5
Total	35-44	917	19.6	0.0	\$23,228	3.4	1.4
Total	45-54	1,006	21.5	0.0	\$28,988	3.5	1.3
Total	55-64	540	11.6	0.0	\$25,127	3.5	1.2
Total	65-Up	187	4.0	0.0	\$11,433	3.2	1.1
Total	N/A	468	10.0	0.0	\$6,263	1.4	1.1
Total	Total	4,675	100.0	100.0	\$18,206	3.0	1.4

Note: Persons worked at any time during the year.

County Determination: Based on county of employment in which the person made the most money in the year.

N/A: Represents persons with demographic data that is unavailable.

N/A = Nonresidents, individuals for whom demographic data are not available.

Source: Demographics of Persons Working in Wyoming by County, Industry, Age, & Gender, 2000-2017.
Research & Planning, Wyoming Department of Workforce Services.

Prepared by M. Moore, Research & Planning, WY DWS, 6/12/18.

Average Earnings by Age and Gender with Place of Work in Platte County in 2003

Gender	Age Group	Number	Age Percent	Gender Percent	Average Annual Wage	Average Quarters Worked	Average Annual Employers
Women	00-19	242	11.7	0.0	\$2,758	2.5	1.5
Women	20-24	178	8.6	0.0	\$7,518	2.9	1.8
Women	25-34	312	15.1	0.0	\$14,549	3.2	1.4
Women	35-44	465	22.5	0.0	\$16,945	3.4	1.4
Women	45-54	508	24.6	0.0	\$20,945	3.6	1.3
Women	55-64	273	13.2	0.0	\$20,803	3.5	1.2
Women	65-Up	88	4.3	0.0	\$8,942	3.3	1.2
Women	N/A	2	0.1	0.0	\$21,407	3.0	1.5
Women	Total	2,068	100.0	44.3	\$15,267	3.3	1.4
Men	00-19	235	10.7	0.0	\$3,255	2.4	1.4
Men	20-24	202	9.2	0.0	\$9,902	2.7	1.6
Men	25-34	383	17.4	0.0	\$22,300	3.0	1.4
Men	35-44	438	19.9	0.0	\$29,345	3.2	1.3
Men	45-54	518	23.6	0.0	\$37,454	3.3	1.2
Men	55-64	319	14.5	0.0	\$31,229	3.2	1.2
Men	65-Up	102	4.6	0.0	\$15,245	3.0	1.2
Men	N/A	2	0.1	0.0	\$7,647	1.5	1.0
Men	Total	2,199	100.0	47.1	\$25,053	3.0	1.3
N/A	N/A	401	100.0	0.0	\$5,159	1.4	1.0
N/A	Total	401	100.0	8.6	\$5,159	1.4	1.0
Total	00-19	477	10.2	0.0	\$3,003	2.4	1.4
Total	20-24	380	8.1	0.0	\$8,785	2.8	1.7
Total	25-34	695	14.9	0.0	\$18,820	3.0	1.4
Total	35-44	903	19.3	0.0	\$22,960	3.3	1.4
Total	45-54	1,026	22.0	0.0	\$29,280	3.4	1.3
Total	55-64	592	12.7	0.0	\$26,421	3.3	1.2
Total	65-Up	190	4.1	0.0	\$12,326	3.2	1.2
Total	N/A	405	8.7	0.0	\$5,252	1.4	1.0
Total	Total	4,668	100.0	100.0	\$19,009	3.0	1.3

Note: Persons worked at any time during the year.

County Determination: Based on county of employment in which the person made the most money in the year.

N/A: Represents persons with demographic data that is unavailable.

N/A = Nonresidents, individuals for whom demographic data are not available.

Source: Demographics of Persons Working in Wyoming by County, Industry, Age, & Gender, 2000-2017.
Research & Planning, Wyoming Department of Workforce Services.

Prepared by M. Moore, Research & Planning, WY DWS, 6/12/18.

Average Earnings by Age and Gender with Place of Work in Platte County in 2004

Gender	Age Group	Number	Age Percent	Gender Percent	Average Annual Wage	Average Quarters Worked	Average Annual Employers
Women	00-19	239	11.6	0.0	\$3,068	2.6	1.5
Women	20-24	179	8.7	0.0	\$6,431	2.8	1.6
Women	25-34	316	15.3	0.0	\$15,879	3.4	1.5
Women	35-44	426	20.6	0.0	\$16,709	3.4	1.5
Women	45-54	512	24.8	0.0	\$21,203	3.6	1.4
Women	55-64	292	14.1	0.0	\$17,823	3.5	1.3
Women	65-Up	99	4.8	0.0	\$8,425	3.2	1.1
Women	N/A	2	0.1	0.0	\$19,731	2.5	1.0
Women	Total	2,065	100.0	44.1	\$14,990	3.3	1.4
Men	00-19	224	10.1	0.0	\$3,064	2.5	1.4
Men	20-24	188	8.4	0.0	\$10,681	2.8	1.6
Men	25-34	371	16.7	0.0	\$21,822	3.1	1.4
Men	35-44	423	19.0	0.0	\$32,028	3.3	1.3
Men	45-54	564	25.3	0.0	\$37,553	3.2	1.2
Men	55-64	344	15.5	0.0	\$34,267	3.3	1.2
Men	65-Up	111	5.0	0.0	\$15,089	3.0	1.2
Men	N/A	1	0.0	0.0	\$6,155	1.0	1.0
Men	Total	2,226	100.0	47.6	\$26,499	3.1	1.3
N/A	N/A	390	100.0	0.0	\$5,945	1.4	1.0
N/A	Total	390	100.0	8.3	\$5,945	1.4	1.0
Total	00-19	463	9.9	0.0	\$3,066	2.6	1.5
Total	20-24	367	7.8	0.0	\$8,608	2.8	1.6
Total	25-34	687	14.7	0.0	\$19,088	3.2	1.4
Total	35-44	849	18.1	0.0	\$24,341	3.3	1.4
Total	45-54	1,076	23.0	0.0	\$29,773	3.4	1.3
Total	55-64	636	13.6	0.0	\$26,717	3.4	1.3
Total	65-Up	210	4.5	0.0	\$11,948	3.1	1.1
Total	N/A	393	8.4	0.0	\$6,016	1.4	1.0
Total	Total	4,681	100.0	100.0	\$19,709	3.1	1.3

Note: Persons worked at any time during the year.

County Determination: Based on county of employment in which the person made the most money in the year.

N/A: Represents persons with demographic data that is unavailable.

N/A = Nonresidents, individuals for whom demographic data are not available.

Source: Demographics of Persons Working in Wyoming by County, Industry, Age, & Gender, 2000-2017.
Research & Planning, Wyoming Department of Workforce Services.

Prepared by M. Moore, Research & Planning, WY DWS, 6/12/18.

Average Earnings by Age and Gender with Place of Work in Platte County in 2005

Gender	Age Group	Number	Age Percent	Gender Percent	Average Annual Wage	Average Quarters Worked	Average Annual Employers
Women	00-19	234	11.4	0.0	\$2,928	2.7	1.5
Women	20-24	180	8.8	0.0	\$6,899	2.9	1.8
Women	25-34	305	14.9	0.0	\$15,987	3.3	1.5
Women	35-44	404	19.7	0.0	\$18,225	3.5	1.4
Women	45-54	522	25.5	0.0	\$22,512	3.6	1.4
Women	55-64	302	14.8	0.0	\$18,627	3.6	1.3
Women	65-Up	97	4.7	0.0	\$9,444	3.4	1.1
Women	N/A	2	0.1	0.0	\$23,037	2.5	1.0
Women	Total	2,046	100.0	44.2	\$15,887	3.4	1.4
Men	00-19	231	10.4	0.0	\$3,320	2.4	1.4
Men	20-24	196	8.8	0.0	\$10,736	2.9	1.7
Men	25-34	362	16.2	0.0	\$21,742	3.0	1.5
Men	35-44	433	19.4	0.0	\$31,118	3.2	1.3
Men	45-54	538	24.1	0.0	\$39,443	3.4	1.2
Men	55-64	357	16.0	0.0	\$35,498	3.3	1.2
Men	65-Up	112	5.0	0.0	\$15,091	3.1	1.2
Men	Total	2,229	100.0	48.1	\$26,828	3.1	1.3
N/A	N/A	355	100.0	0.0	\$6,118	1.4	1.0
N/A	Total	355	100.0	7.7	\$6,118	1.4	1.0
Total	00-19	465	10.0	0.0	\$3,122	2.6	1.4
Total	20-24	376	8.1	0.0	\$8,899	2.9	1.7
Total	25-34	667	14.4	0.0	\$19,111	3.1	1.5
Total	35-44	837	18.1	0.0	\$24,895	3.4	1.4
Total	45-54	1,060	22.9	0.0	\$31,106	3.5	1.3
Total	55-64	659	14.2	0.0	\$27,766	3.4	1.2
Total	65-Up	209	4.5	0.0	\$12,470	3.2	1.1
Total	N/A	357	7.7	0.0	\$6,213	1.4	1.0
Total	Total	4,630	100.0	100.0	\$20,405	3.1	1.3

Note: Persons worked at any time during the year.

County Determination: Based on county of employment in which the person made the most money in the year.

N/A: Represents persons with demographic data that is unavailable.

N/A = Nonresidents, individuals for whom demographic data are not available.

Source: Demographics of Persons Working in Wyoming by County, Industry, Age, & Gender, 2000-2017.

Research & Planning, Wyoming Department of Workforce Services.

Prepared by M. Moore, Research & Planning, WY DWS, 6/12/18.

Average Earnings by Age and Gender with Place of Work in Platte County in 2006

Gender	Age Group	Number	Age Percent	Gender Percent	Average Annual Wage	Average Quarters Worked	Average Annual Employers
Women	00-19	226	11.0	0.0	\$3,348	2.8	1.6
Women	20-24	170	8.3	0.0	\$7,105	2.8	1.8
Women	25-34	302	14.7	0.0	\$16,566	3.3	1.5
Women	35-44	401	19.5	0.0	\$19,158	3.4	1.4
Women	45-54	493	24.0	0.0	\$22,226	3.5	1.4
Women	55-64	358	17.4	0.0	\$19,164	3.4	1.3
Women	65-Up	105	5.1	0.0	\$8,919	3.4	1.2
Women	N/A	2	0.1	0.0	\$6,320	1.0	1.0
Women	Total	2,057	100.0	44.4	\$16,246	3.3	1.4
Men	00-19	201	8.9	0.0	\$3,898	2.6	1.5
Men	20-24	198	8.8	0.0	\$11,065	2.7	1.6
Men	25-34	350	15.6	0.0	\$24,272	3.1	1.4
Men	35-44	450	20.0	0.0	\$32,504	3.2	1.3
Men	45-54	522	23.2	0.0	\$40,114	3.3	1.3
Men	55-64	403	17.9	0.0	\$37,417	3.3	1.2
Men	65-Up	123	5.5	0.0	\$16,762	3.1	1.2
Men	N/A	1	0.0	0.0	\$3,603	1.0	1.0
Men	Total	2,248	100.0	48.5	\$28,550	3.1	1.3
N/A	N/A	328	100.0	0.0	\$7,683	1.6	1.0
N/A	Total	328	100.0	7.1	\$7,683	1.6	1.0
Total	00-19	427	9.2	0.0	\$3,607	2.7	1.5
Total	20-24	368	7.9	0.0	\$9,236	2.8	1.7
Total	25-34	652	14.1	0.0	\$20,703	3.2	1.5
Total	35-44	851	18.4	0.0	\$26,215	3.3	1.4
Total	45-54	1,015	21.9	0.0	\$31,425	3.4	1.3
Total	55-64	761	16.4	0.0	\$28,830	3.3	1.2
Total	65-Up	228	4.9	0.0	\$13,150	3.2	1.2
Total	N/A	331	7.1	0.0	\$7,662	1.6	1.0
Total	Total	4,633	100.0	100.0	\$21,609	3.1	1.4

Note: Persons worked at any time during the year.

County Determination: Based on county of employment in which the person made the most money in the year.

N/A: Represents persons with demographic data that is unavailable.

N/A = Nonresidents, individuals for whom demographic data are not available.

Source: Demographics of Persons Working in Wyoming by County, Industry, Age, & Gender, 2000-2017.

Research & Planning, Wyoming Department of Workforce Services.

Prepared by M. Moore, Research & Planning, WY DWS, 6/12/18.

Average Earnings by Age and Gender with Place of Work in Platte County in 2007

Gender	Age Group	Number	Age Percent	Gender Percent	Average Annual Wage	Average Quarters Worked	Average Annual Employers
Women	00-19	242	11.9	0.0	\$3,379	2.7	1.6
Women	20-24	164	8.0	0.0	\$8,016	2.9	1.7
Women	25-34	300	14.7	0.0	\$18,315	3.3	1.5
Women	35-44	381	18.7	0.0	\$21,155	3.5	1.5
Women	45-54	479	23.5	0.0	\$25,816	3.7	1.3
Women	55-64	352	17.2	0.0	\$23,417	3.6	1.3
Women	65-Up	122	6.0	0.0	\$10,614	3.5	1.2
Women	N/A	1	0.0	0.0	\$52,438	4.0	1.0
Women	Total	2,041	100.0	45.2	\$18,443	3.4	1.5
Men	00-19	216	10.0	0.0	\$3,938	2.7	1.5
Men	20-24	171	7.9	0.0	\$12,430	2.8	1.7
Men	25-34	367	17.0	0.0	\$25,435	3.0	1.4
Men	35-44	402	18.6	0.0	\$36,812	3.3	1.3
Men	45-54	478	22.1	0.0	\$46,014	3.5	1.3
Men	55-64	393	18.2	0.0	\$42,787	3.4	1.2
Men	65-Up	134	6.2	0.0	\$16,844	3.1	1.2
Men	Total	2,161	100.0	47.9	\$31,548	3.2	1.4
N/A	N/A	314	100.0	0.0	\$8,472	1.8	1.2
N/A	Total	314	100.0	7.0	\$8,472	1.8	1.2
Total	00-19	458	10.1	0.0	\$3,643	2.7	1.6
Total	20-24	335	7.4	0.0	\$10,269	2.8	1.7
Total	25-34	667	14.8	0.0	\$22,232	3.2	1.5
Total	35-44	783	17.3	0.0	\$29,193	3.4	1.4
Total	45-54	957	21.2	0.0	\$35,904	3.6	1.3
Total	55-64	745	16.5	0.0	\$33,635	3.5	1.2
Total	65-Up	256	5.7	0.0	\$13,875	3.3	1.2
Total	N/A	315	7.0	0.0	\$8,612	1.8	1.2
Total	Total	4,516	100.0	100.0	\$24,021	3.2	1.4

Note: Persons worked at any time during the year.

County Determination: Based on county of employment in which the person made the most money in the year.

N/A: Represents persons with demographic data that is unavailable.

N/A = Nonresidents, individuals for whom demographic data are not available.

Source: Demographics of Persons Working in Wyoming by County, Industry, Age, & Gender, 2000-2017.
Research & Planning, Wyoming Department of Workforce Services.

Prepared by M. Moore, Research & Planning, WY DWS, 6/12/18.

Average Earnings by Age and Gender with Place of Work in Platte County in 2008

Gender	Age Group	Number	Age Percent	Gender Percent	Average Annual Wage	Average Quarters Worked	Average Annual Employers
Women	00-19	212	10.7	0.0	\$3,311	2.7	1.5
Women	20-24	158	8.0	0.0	\$9,026	3.0	1.8
Women	25-34	278	14.0	0.0	\$17,813	3.3	1.5
Women	35-44	362	18.3	0.0	\$22,924	3.5	1.4
Women	45-54	479	24.2	0.0	\$27,332	3.7	1.4
Women	55-64	365	18.4	0.0	\$24,746	3.6	1.3
Women	65-Up	125	6.3	0.0	\$12,754	3.4	1.2
Women	N/A	1	0.1	0.0	\$53,933	4.0	1.0
Women	Total	1,980	100.0	44.7	\$19,773	3.4	1.4
Men	00-19	201	9.6	0.0	\$3,976	2.6	1.3
Men	20-24	181	8.6	0.0	\$12,071	2.6	1.6
Men	25-34	351	16.7	0.0	\$27,448	3.1	1.3
Men	35-44	363	17.3	0.0	\$39,770	3.4	1.3
Men	45-54	477	22.7	0.0	\$45,577	3.4	1.2
Men	55-64	396	18.9	0.0	\$46,111	3.4	1.2
Men	65-Up	131	6.2	0.0	\$19,186	3.4	1.2
Men	Total	2,100	100.0	47.4	\$33,128	3.2	1.3
N/A	N/A	354	100.0	0.0	\$8,753	1.6	1.1
N/A	Total	354	100.0	8.0	\$8,753	1.6	1.1
Total	00-19	413	9.3	0.0	\$3,635	2.7	1.4
Total	20-24	339	7.6	0.0	\$10,652	2.8	1.7
Total	25-34	629	14.2	0.0	\$23,190	3.2	1.4
Total	35-44	725	16.4	0.0	\$31,359	3.4	1.3
Total	45-54	956	21.6	0.0	\$36,436	3.5	1.3
Total	55-64	761	17.2	0.0	\$35,864	3.5	1.2
Total	65-Up	256	5.8	0.0	\$16,046	3.4	1.2
Total	N/A	355	8.0	0.0	\$8,881	1.6	1.1
Total	Total	4,434	100.0	100.0	\$25,218	3.2	1.3

Note: Persons worked at any time during the year.

County Determination: Based on county of employment in which the person made the most money in the year.

N/A: Represents persons with demographic data that is unavailable.

N/A = Nonresidents, individuals for whom demographic data are not available.

Source: Demographics of Persons Working in Wyoming by County, Industry, Age, & Gender, 2000-2017.
Research & Planning, Wyoming Department of Workforce Services.

Prepared by M. Moore, Research & Planning, WY DWS, 6/12/18.

Average Earnings by Age and Gender with Place of Work in Platte County in 2009

Gender	Age Group	Number	Age Percent	Gender Percent	Average Annual Wage	Average Quarters Worked	Average Annual Employers
Women	00-19	192	9.6	0.0	\$3,583	2.9	1.5
Women	20-24	169	8.5	0.0	\$8,380	2.9	1.7
Women	25-34	281	14.1	0.0	\$18,324	3.4	1.4
Women	35-44	373	18.7	0.0	\$23,531	3.4	1.4
Women	45-54	459	23.0	0.0	\$26,928	3.7	1.3
Women	55-64	393	19.7	0.0	\$26,072	3.6	1.3
Women	65-Up	129	6.5	0.0	\$13,368	3.4	1.2
Women	N/A	1	0.1	0.0	\$61,050	4.0	1.0
Women	Total	1,997	100.0	44.3	\$20,241	3.4	1.4
Men	00-19	171	7.8	0.0	\$4,117	2.7	1.3
Men	20-24	189	8.6	0.0	\$10,975	2.6	1.6
Men	25-34	375	17.1	0.0	\$25,453	2.9	1.4
Men	35-44	401	18.2	0.0	\$37,774	3.3	1.3
Men	45-54	481	21.9	0.0	\$44,832	3.3	1.2
Men	55-64	430	19.6	0.0	\$43,543	3.3	1.1
Men	65-Up	151	6.9	0.0	\$23,262	3.2	1.2
Men	Total	2,198	100.0	48.8	\$32,426	3.1	1.3
N/A	N/A	311	100.0	0.0	\$10,141	1.6	1.1
N/A	Total	311	100.0	6.9	\$10,141	1.6	1.1
Total	00-19	363	8.1	0.0	\$3,835	2.8	1.4
Total	20-24	358	7.9	0.0	\$9,750	2.7	1.6
Total	25-34	656	14.6	0.0	\$22,399	3.1	1.4
Total	35-44	774	17.2	0.0	\$30,910	3.3	1.4
Total	45-54	940	20.9	0.0	\$36,090	3.5	1.3
Total	55-64	823	18.3	0.0	\$35,200	3.5	1.2
Total	65-Up	280	6.2	0.0	\$18,704	3.3	1.2
Total	N/A	312	6.9	0.0	\$10,304	1.6	1.1
Total	Total	4,506	100.0	100.0	\$25,488	3.1	1.3

Note: Persons worked at any time during the year.

County Determination: Based on county of employment in which the person made the most money in the year.

N/A: Represents persons with demographic data that is unavailable.

N/A = Nonresidents, individuals for whom demographic data are not available.

Source: Demographics of Persons Working in Wyoming by County, Industry, Age, & Gender, 2000-2017.

Research & Planning, Wyoming Department of Workforce Services.

Prepared by M. Moore, Research & Planning, WY DWS, 6/12/18.

Average Earnings by Age and Gender with Place of Work in Platte County in 2010

Gender	Age Group	Number	Age Percent	Gender Percent	Average Annual Wage	Average Quarters Worked	Average Annual Employers
Women	00-19	192	9.6	0.0	\$3,250	2.6	1.4
Women	20-24	165	8.3	0.0	\$9,182	3.0	1.7
Women	25-34	288	14.4	0.0	\$17,699	3.4	1.5
Women	35-44	359	18.0	0.0	\$24,588	3.5	1.4
Women	45-54	471	23.6	0.0	\$26,722	3.6	1.3
Women	55-64	388	19.4	0.0	\$27,249	3.7	1.2
Women	65-Up	131	6.6	0.0	\$14,599	3.4	1.2
Women	N/A	1	0.1	0.0	\$58,728	4.0	1.0
Women	Total	1,995	100.0	43.1	\$20,648	3.4	1.4
Men	00-19	180	7.8	0.0	\$3,714	2.5	1.3
Men	20-24	222	9.6	0.0	\$13,590	2.8	1.5
Men	25-34	396	17.1	0.0	\$27,360	2.9	1.4
Men	35-44	430	18.6	0.0	\$40,096	3.2	1.3
Men	45-54	503	21.7	0.0	\$46,620	3.3	1.2
Men	55-64	442	19.1	0.0	\$45,087	3.3	1.2
Men	65-Up	141	6.1	0.0	\$26,584	3.3	1.2
Men	Total	2,314	100.0	50.0	\$34,092	3.1	1.3
N/A	N/A	318	100.0	0.0	\$11,607	1.7	1.1
N/A	Total	318	100.0	6.9	\$11,607	1.7	1.1
Total	00-19	372	8.0	0.0	\$3,474	2.6	1.4
Total	20-24	387	8.4	0.0	\$11,711	2.8	1.6
Total	25-34	684	14.8	0.0	\$23,292	3.1	1.4
Total	35-44	789	17.1	0.0	\$33,040	3.4	1.4
Total	45-54	974	21.1	0.0	\$36,998	3.5	1.3
Total	55-64	830	17.9	0.0	\$36,749	3.5	1.2
Total	65-Up	272	5.9	0.0	\$20,812	3.3	1.2
Total	N/A	319	6.9	0.0	\$11,754	1.7	1.1
Total	Total	4,627	100.0	100.0	\$26,750	3.1	1.3

Note: Persons worked at any time during the year.

County Determination: Based on county of employment in which the person made the most money in the year.

N/A: Represents persons with demographic data that is unavailable.

N/A = Nonresidents, individuals for whom demographic data are not available.

Source: Demographics of Persons Working in Wyoming by County, Industry, Age, & Gender, 2000-2017.
Research & Planning, Wyoming Department of Workforce Services.

Prepared by M. Moore, Research & Planning, WY DWS, 6/12/18.

Average Earnings by Age and Gender with Place of Work in Platte County in 2011

Gender	Age Group	Number	Age Percent	Gender Percent	Average Annual Wage	Average Quarters Worked	Average Annual Employers
Women	00-19	177	8.8	0.0	\$3,690	2.7	1.5
Women	20-24	196	9.8	0.0	\$8,627	2.9	1.8
Women	25-34	289	14.4	0.0	\$19,160	3.4	1.6
Women	35-44	346	17.2	0.0	\$24,686	3.5	1.4
Women	45-54	464	23.1	0.0	\$27,594	3.6	1.3
Women	55-64	403	20.0	0.0	\$26,994	3.6	1.2
Women	65-Up	134	6.7	0.0	\$15,104	3.3	1.1
Women	N/A	1	0.0	0.0	\$58,181	4.0	1.0
Women	Total	2,010	100.0	44.2	\$20,989	3.4	1.4
Men	00-19	151	6.8	0.0	\$3,966	2.5	1.3
Men	20-24	215	9.7	0.0	\$13,348	2.8	1.5
Men	25-34	389	17.5	0.0	\$31,590	3.1	1.3
Men	35-44	391	17.6	0.0	\$39,937	3.1	1.3
Men	45-54	494	22.2	0.0	\$48,205	3.4	1.2
Men	55-64	445	20.0	0.0	\$45,817	3.3	1.2
Men	65-Up	140	6.3	0.0	\$30,055	3.4	1.2
Men	Total	2,225	100.0	49.0	\$35,857	3.2	1.3
N/A	N/A	310	100.0	0.0	\$11,060	1.6	1.0
N/A	Total	310	100.0	6.8	\$11,060	1.6	1.0
Total	00-19	328	7.2	0.0	\$3,817	2.6	1.4
Total	20-24	411	9.0	0.0	\$11,096	2.8	1.6
Total	25-34	678	14.9	0.0	\$26,292	3.2	1.4
Total	35-44	737	16.2	0.0	\$32,777	3.3	1.3
Total	45-54	958	21.1	0.0	\$38,223	3.5	1.3
Total	55-64	848	18.7	0.0	\$36,872	3.5	1.2
Total	65-Up	274	6.0	0.0	\$22,743	3.4	1.2
Total	N/A	311	6.8	0.0	\$11,212	1.6	1.0
Total	Total	4,545	100.0	100.0	\$27,590	3.2	1.3

Note: Persons worked at any time during the year.

County Determination: Based on county of employment in which the person made the most money in the year.

N/A: Represents persons with demographic data that is unavailable.

N/A = Nonresidents, individuals for whom demographic data are not available.

Source: Demographics of Persons Working in Wyoming by County, Industry, Age, & Gender, 2000-2017.
Research & Planning, Wyoming Department of Workforce Services.

Prepared by M. Moore, Research & Planning, WY DWS, 6/12/18.

Average Earnings by Age and Gender with Place of Work in Platte County in 2012

Gender	Age Group	Number	Age Percent	Gender Percent	Average Annual Wage	Average Quarters Worked	Average Annual Employers
Women	00-19	180	9.0	0.0	\$3,430	2.6	1.5
Women	20-24	167	8.3	0.0	\$11,044	3.0	1.7
Women	25-34	298	14.9	0.0	\$19,572	3.3	1.5
Women	35-44	345	17.2	0.0	\$27,034	3.5	1.4
Women	45-54	460	22.9	0.0	\$27,388	3.5	1.4
Women	55-64	410	20.4	0.0	\$27,214	3.5	1.2
Women	65-Up	143	7.1	0.0	\$16,487	3.4	1.2
Women	N/A	3	0.1	0.0	\$23,961	2.3	1.0
Women	Total	2,006	100.0	42.3	\$21,838	3.4	1.4
Men	00-19	156	6.5	0.0	\$3,544	2.3	1.3
Men	20-24	212	8.8	0.0	\$15,502	2.9	1.6
Men	25-34	441	18.4	0.0	\$32,079	3.1	1.4
Men	35-44	427	17.8	0.0	\$40,590	3.2	1.3
Men	45-54	554	23.1	0.0	\$47,534	3.3	1.3
Men	55-64	446	18.6	0.0	\$48,096	3.4	1.2
Men	65-Up	160	6.7	0.0	\$25,874	3.2	1.2
Men	Total	2,396	100.0	50.6	\$36,412	3.1	1.3
N/A	N/A	336	100.0	0.0	\$9,610	1.7	1.1
N/A	Total	336	100.0	7.1	\$9,610	1.7	1.1
Total	00-19	336	7.1	0.0	\$3,483	2.4	1.4
Total	20-24	379	8.0	0.0	\$13,537	2.9	1.6
Total	25-34	739	15.6	0.0	\$27,036	3.2	1.5
Total	35-44	772	16.3	0.0	\$34,532	3.4	1.4
Total	45-54	1,014	21.4	0.0	\$38,395	3.4	1.3
Total	55-64	856	18.1	0.0	\$38,094	3.4	1.2
Total	65-Up	303	6.4	0.0	\$21,444	3.3	1.2
Total	N/A	339	7.2	0.0	\$9,737	1.7	1.1
Total	Total	4,738	100.0	100.0	\$28,341	3.1	1.3

Note: Persons worked at any time during the year.

County Determination: Based on county of employment in which the person made the most money in the year.

N/A: Represents persons with demographic data that is unavailable.

N/A = Nonresidents, individuals for whom demographic data are not available.

Source: Demographics of Persons Working in Wyoming by County, Industry, Age, & Gender, 2000-2017.
Research & Planning, Wyoming Department of Workforce Services.

Prepared by M. Moore, Research & Planning, WY DWS, 6/12/18.

Average Earnings by Age and Gender with Place of Work in Platte County in 2013

Gender	Age Group	Number	Age Percent	Gender Percent	Average Annual Wage	Average Quarters Worked	Average Annual Employers
Women	00-19	156	8.0	0.0	\$3,525	2.6	1.5
Women	20-24	169	8.7	0.0	\$10,994	3.0	1.7
Women	25-34	312	16.0	0.0	\$22,203	3.4	1.5
Women	35-44	341	17.5	0.0	\$27,494	3.6	1.5
Women	45-54	430	22.0	0.0	\$29,487	3.6	1.4
Women	55-64	374	19.2	0.0	\$27,885	3.6	1.3
Women	65-Up	168	8.6	0.0	\$15,745	3.3	1.2
Women	N/A	2	0.1	0.0	\$14,624	3.0	1.0
Women	Total	1,952	100.0	40.2	\$22,794	3.4	1.4
Men	00-19	145	6.0	0.0	\$3,383	2.4	1.3
Men	20-24	200	8.3	0.0	\$15,902	2.9	1.6
Men	25-34	453	18.9	0.0	\$35,401	3.1	1.4
Men	35-44	414	17.3	0.0	\$41,147	3.1	1.3
Men	45-54	562	23.4	0.0	\$47,738	3.3	1.3
Men	55-64	463	19.3	0.0	\$49,110	3.4	1.2
Men	65-Up	159	6.6	0.0	\$27,788	3.2	1.2
Men	N/A	1	0.0	0.0	\$51,840	4.0	2.0
Men	Total	2,397	100.0	49.4	\$37,872	3.1	1.3
N/A	N/A	505	100.0	0.0	\$14,282	1.8	1.1
N/A	Total	505	100.0	10.4	\$14,282	1.8	1.1
Total	00-19	301	6.2	0.0	\$3,457	2.5	1.4
Total	20-24	369	7.6	0.0	\$13,654	2.9	1.6
Total	25-34	765	15.8	0.0	\$30,018	3.3	1.4
Total	35-44	755	15.6	0.0	\$34,981	3.3	1.4
Total	45-54	992	20.4	0.0	\$39,827	3.4	1.3
Total	55-64	837	17.2	0.0	\$39,626	3.5	1.2
Total	65-Up	327	6.7	0.0	\$21,601	3.3	1.2
Total	N/A	508	10.5	0.0	\$14,357	1.8	1.1
Total	Total	4,854	100.0	100.0	\$29,354	3.1	1.3

Note: Persons worked at any time during the year.

County Determination: Based on county of employment in which the person made the most money in the year.

N/A: Represents persons with demographic data that is unavailable.

N/A = Nonresidents, individuals for whom demographic data are not available.

Source: Demographics of Persons Working in Wyoming by County, Industry, Age, & Gender, 2000-2017.
Research & Planning, Wyoming Department of Workforce Services.

Prepared by M. Moore, Research & Planning, WY DWS, 6/12/18.

Average Earnings by Age and Gender with Place of Work in Platte County in 2014

Gender	Age Group	Number	Age Percent	Gender Percent	Average Annual Wage	Average Quarters Worked	Average Annual Employers
Women	00-19	165	8.3	0.0	\$3,907	2.5	1.5
Women	20-24	155	7.8	0.0	\$10,667	2.9	1.6
Women	25-34	324	16.4	0.0	\$22,356	3.3	1.5
Women	35-44	364	18.4	0.0	\$25,855	3.4	1.4
Women	45-54	411	20.8	0.0	\$31,232	3.6	1.4
Women	55-64	384	19.4	0.0	\$28,975	3.6	1.3
Women	65-Up	175	8.8	0.0	\$15,461	3.3	1.2
Women	N/A	1	0.1	0.0	\$15,867	4.0	1.0
Women	Total	1,979	100.0	40.5	\$23,061	3.4	1.4
Men	00-19	167	7.2	0.0	\$4,473	2.4	1.4
Men	20-24	177	7.6	0.0	\$15,874	3.0	1.6
Men	25-34	434	18.6	0.0	\$36,000	3.1	1.4
Men	35-44	404	17.3	0.0	\$50,276	3.3	1.4
Men	45-54	517	22.2	0.0	\$51,881	3.3	1.3
Men	55-64	466	20.0	0.0	\$52,648	3.3	1.2
Men	65-Up	168	7.2	0.0	\$32,815	3.3	1.2
Men	N/A	1	0.0	0.0	\$49,375	4.0	3.0
Men	Total	2,334	100.0	47.8	\$41,307	3.2	1.3
N/A	N/A	572	100.0	0.0	\$13,768	1.8	1.1
N/A	Total	572	100.0	11.7	\$13,768	1.8	1.1
Total	00-19	332	6.8	0.0	\$4,192	2.5	1.5
Total	20-24	332	6.8	0.0	\$13,444	2.9	1.6
Total	25-34	758	15.5	0.0	\$30,168	3.2	1.4
Total	35-44	768	15.7	0.0	\$38,702	3.3	1.4
Total	45-54	928	19.0	0.0	\$42,736	3.5	1.3
Total	55-64	850	17.4	0.0	\$41,953	3.5	1.3
Total	65-Up	343	7.0	0.0	\$23,961	3.3	1.2
Total	N/A	574	11.8	0.0	\$13,833	1.8	1.1
Total	Total	4,885	100.0	100.0	\$30,691	3.1	1.3

Note: Persons worked at any time during the year.

County Determination: Based on county of employment in which the person made the most money in the year.

N/A: Represents persons with demographic data that is unavailable.

N/A = Nonresidents, individuals for whom demographic data are not available.

Source: Demographics of Persons Working in Wyoming by County, Industry, Age, & Gender, 2000-2017.
Research & Planning, Wyoming Department of Workforce Services.

Prepared by M. Moore, Research & Planning, WY DWS, 6/12/18.

Average Earnings by Age and Gender with Place of Work in Platte County in 2015

Gender	Age Group	Number	Age Percent	Gender Percent	Average Annual Wage	Average Quarters Worked	Average Annual Employers
Women	00-19	160	8.1	0.0	\$4,059	2.7	1.5
Women	20-24	170	8.6	0.0	\$11,331	3.0	1.7
Women	25-34	322	16.3	0.0	\$22,743	3.3	1.5
Women	35-44	353	17.9	0.0	\$28,931	3.5	1.5
Women	45-54	407	20.6	0.0	\$34,932	3.6	1.4
Women	55-64	383	19.4	0.0	\$30,154	3.6	1.3
Women	65-Up	181	9.2	0.0	\$15,610	3.3	1.2
Women	N/A	1	0.1	0.0	\$23,636	4.0	1.0
Women	Total	1,977	100.0	39.9	\$24,647	3.4	1.4
Men	00-19	172	7.1	0.0	\$5,046	2.5	1.5
Men	20-24	194	8.0	0.0	\$18,580	3.0	1.6
Men	25-34	468	19.4	0.0	\$37,557	3.1	1.3
Men	35-44	436	18.1	0.0	\$50,839	3.3	1.3
Men	45-54	501	20.8	0.0	\$56,554	3.4	1.2
Men	55-64	486	20.1	0.0	\$55,078	3.4	1.2
Men	65-Up	156	6.5	0.0	\$33,303	3.3	1.2
Men	Total	2,413	100.0	48.6	\$43,312	3.2	1.3
N/A	N/A	570	100.0	0.0	\$14,346	2.0	1.1
N/A	Total	570	100.0	11.5	\$14,346	2.0	1.1
Total	00-19	332	6.7	0.0	\$4,570	2.6	1.5
Total	20-24	364	7.3	0.0	\$15,194	3.0	1.6
Total	25-34	790	15.9	0.0	\$31,519	3.2	1.4
Total	35-44	789	15.9	0.0	\$41,037	3.4	1.4
Total	45-54	908	18.3	0.0	\$46,862	3.5	1.3
Total	55-64	869	17.5	0.0	\$44,093	3.5	1.2
Total	65-Up	337	6.8	0.0	\$23,800	3.3	1.2
Total	N/A	571	11.5	0.0	\$14,362	2.0	1.1
Total	Total	4,960	100.0	100.0	\$32,544	3.1	1.3

Note: Persons worked at any time during the year.

County Determination: Based on county of employment in which the person made the most money in the year.

N/A: Represents persons with demographic data that is unavailable.

N/A = Nonresidents, individuals for whom demographic data are not available.

Source: Demographics of Persons Working in Wyoming by County, Industry, Age, & Gender, 2000-2017.
Research & Planning, Wyoming Department of Workforce Services.

Prepared by M. Moore, Research & Planning, WY DWS, 6/12/18.

Average Earnings by Age and Gender with Place of Work in Platte County in 2016

Gender	Age Group	Number	Age Percent	Gender Percent	Average Annual Wage	Average Quarters Worked	Average Annual Employers
Women	00-19	152	7.9	0.0	\$4,544	2.7	1.5
Women	20-24	166	8.7	0.0	\$11,372	3.0	1.6
Women	25-34	333	17.4	0.0	\$21,865	3.4	1.4
Women	35-44	323	16.9	0.0	\$30,754	3.6	1.4
Women	45-54	395	20.6	0.0	\$34,492	3.6	1.3
Women	55-64	371	19.4	0.0	\$31,293	3.6	1.2
Women	65-Up	174	9.1	0.0	\$14,852	3.3	1.2
Women	N/A	1	0.1	0.0	\$25,470	4.0	1.0
Women	Total	1,915	100.0	41.6	\$24,876	3.4	1.4
Men	00-19	167	7.3	0.0	\$4,712	2.6	1.4
Men	20-24	176	7.7	0.0	\$17,058	2.9	1.5
Men	25-34	448	19.5	0.0	\$35,931	3.2	1.3
Men	35-44	415	18.1	0.0	\$49,450	3.3	1.3
Men	45-54	473	20.6	0.0	\$54,332	3.3	1.2
Men	55-64	444	19.4	0.0	\$56,323	3.4	1.1
Men	65-Up	168	7.3	0.0	\$30,045	3.3	1.2
Men	N/A	1	0.0	0.0	\$31,664	4.0	2.0
Men	Total	2,292	100.0	49.8	\$41,969	3.2	1.3
N/A	N/A	398	100.0	0.0	\$11,446	1.7	1.1
N/A	Total	398	100.0	8.6	\$11,446	1.7	1.1
Total	00-19	319	6.9	0.0	\$4,632	2.7	1.4
Total	20-24	342	7.4	0.0	\$14,298	2.9	1.5
Total	25-34	781	17.0	0.0	\$29,934	3.3	1.4
Total	35-44	738	16.0	0.0	\$41,267	3.5	1.3
Total	45-54	868	18.8	0.0	\$45,304	3.5	1.2
Total	55-64	815	17.7	0.0	\$44,929	3.5	1.2
Total	65-Up	342	7.4	0.0	\$22,315	3.3	1.2
Total	N/A	400	8.7	0.0	\$11,532	1.7	1.1
Total	Total	4,605	100.0	100.0	\$32,223	3.2	1.3

Note: Persons worked at any time during the year.

County Determination: Based on county of employment in which the person made the most money in the year.

N/A: Represents persons with demographic data that is unavailable.

N/A = Nonresidents, individuals for whom demographic data are not available.

Source: Demographics of Persons Working in Wyoming by County, Industry, Age, & Gender, 2000-2017.
Research & Planning, Wyoming Department of Workforce Services.

Prepared by M. Moore, Research & Planning, WY DWS, 6/12/18.

Average Earnings by Age and Gender with Place of Work in Platte County in 2017

Gender	Age Group	Number	Age Percent	Gender Percent	Average Annual Wage	Average Quarters Worked	Average Annual Employers
Women	00-19	149	7.8	0.0	\$4,133	2.7	1.5
Women	20-24	148	7.8	0.0	\$11,964	3.0	1.7
Women	25-34	336	17.7	0.0	\$24,019	3.4	1.5
Women	35-44	338	17.8	0.0	\$30,011	3.5	1.4
Women	45-54	392	20.6	0.0	\$34,945	3.6	1.3
Women	55-64	364	19.1	0.0	\$34,068	3.6	1.2
Women	65-Up	173	9.1	0.0	\$16,131	3.4	1.2
Women	N/A	1	0.1	0.0	\$26,100	4.0	1.0
Women	Total	1,901	100.0	41.2	\$26,048	3.4	1.4
Men	00-19	127	5.7	0.0	\$5,771	2.6	1.5
Men	20-24	164	7.3	0.0	\$17,560	2.8	1.5
Men	25-34	421	18.8	0.0	\$39,402	3.2	1.4
Men	35-44	455	20.3	0.0	\$49,377	3.3	1.4
Men	45-54	460	20.5	0.0	\$59,566	3.4	1.3
Men	55-64	440	19.6	0.0	\$56,599	3.4	1.2
Men	65-Up	173	7.7	0.0	\$34,565	3.4	1.1
Men	N/A	1	0.0	0.0	\$6,876	1.0	1.0
Men	Total	2,241	100.0	48.5	\$45,050	3.3	1.3
N/A	N/A	477	100.0	0.0	\$14,334	1.9	1.1
N/A	Total	477	100.0	10.3	\$14,334	1.9	1.1
Total	00-19	276	6.0	0.0	\$4,887	2.6	1.5
Total	20-24	312	6.8	0.0	\$14,906	2.9	1.6
Total	25-34	757	16.4	0.0	\$32,574	3.3	1.5
Total	35-44	793	17.2	0.0	\$41,123	3.4	1.4
Total	45-54	852	18.4	0.0	\$48,238	3.5	1.3
Total	55-64	804	17.4	0.0	\$46,398	3.5	1.2
Total	65-Up	346	7.5	0.0	\$25,348	3.4	1.2
Total	N/A	479	10.4	0.0	\$14,343	1.9	1.1
Total	Total	4,619	100.0	100.0	\$34,058	3.2	1.3

Note: Persons worked at any time during the year.

County Determination: Based on county of employment in which the person made the most money in the year.

N/A: Represents persons with demographic data that is unavailable.

N/A = Nonresidents, individuals for whom demographic data are not available.

Source: Demographics of Persons Working in Wyoming by County, Industry, Age, & Gender, 2000-2017.
Research & Planning, Wyoming Department of Workforce Services.

Prepared by M. Moore, Research & Planning, WY DWS, 6/12/18.