

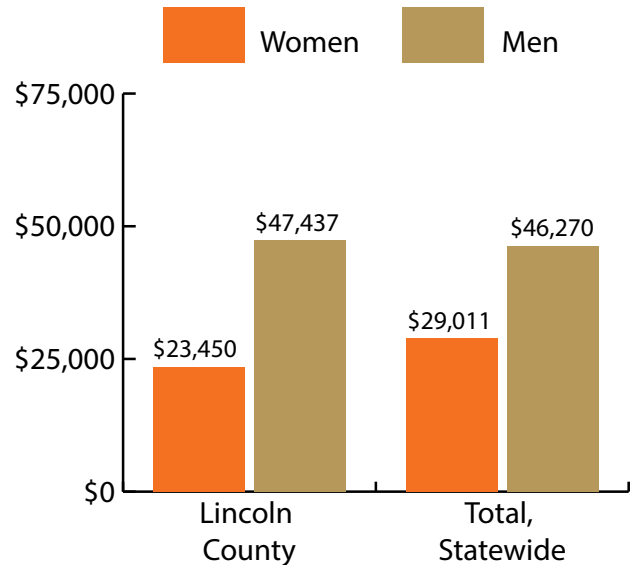
Lincoln County at a Glance, 2017

Demographics of Persons Working in Wyoming by County, Industry, Age, & Gender, 2000-2017

Table: Total Number of Persons Working in Lincoln County, WY, at Any Time by Gender and Age, 2016-2017

Gender	2016	2017	Change	
			N	%
Women	3,246	3,267	21	0.6
Men	3,750	3,708	-42	-1.1
Nonresidents	909	1,008	99	10.9
Total	7,905	7,983	78	1.0

Age	2016	2017	Change	
			N	%
00-19	662	636	-26	-3.9
20-24	582	589	7	1.2
25-34	1,287	1,268	-19	-1.5
35-44	1,428	1,435	7	0.5
45-54	1,327	1,276	-51	-3.8
55-64	1,275	1,299	24	1.9
65-Up	433	470	37	8.5
Nonresidents	911	1,010	99	10.9
Total	7,905	7,983	78	1.0



Women's Wages as % of Men's Wages

Lincoln County: 49.4%

Total: 62.7%

Figure: Average Annual Wages by Gender, 2017

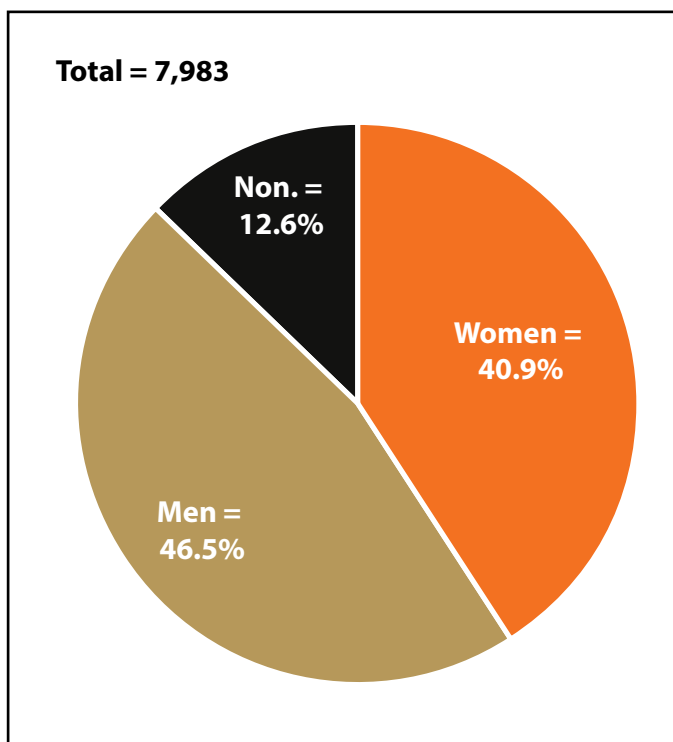


Figure: Persons Working by Gender, 2017

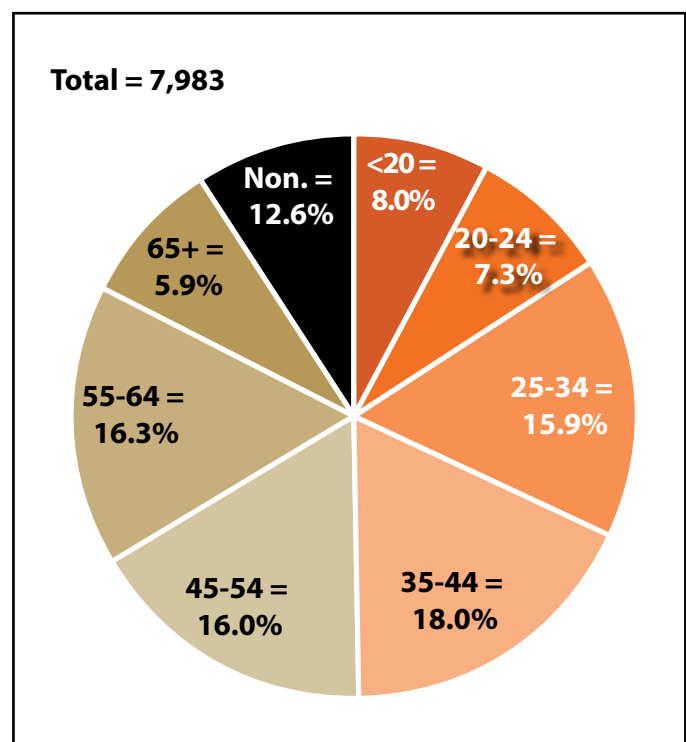


Figure: Persons Working by Age, 2017

Note: Nonresidents are individuals for whom demographic data are not available.

Source: Demographics of Persons Working in Wyoming by County, Industry, Age, & Gender, 2000-2017. Research & Planning, Wyoming Department of Workforce Services. Prepared by M. Moore, Research & Planning, WY DWS, 6/12/18.

Persons Working in Lincoln County by Gender and Age, 2000-2017

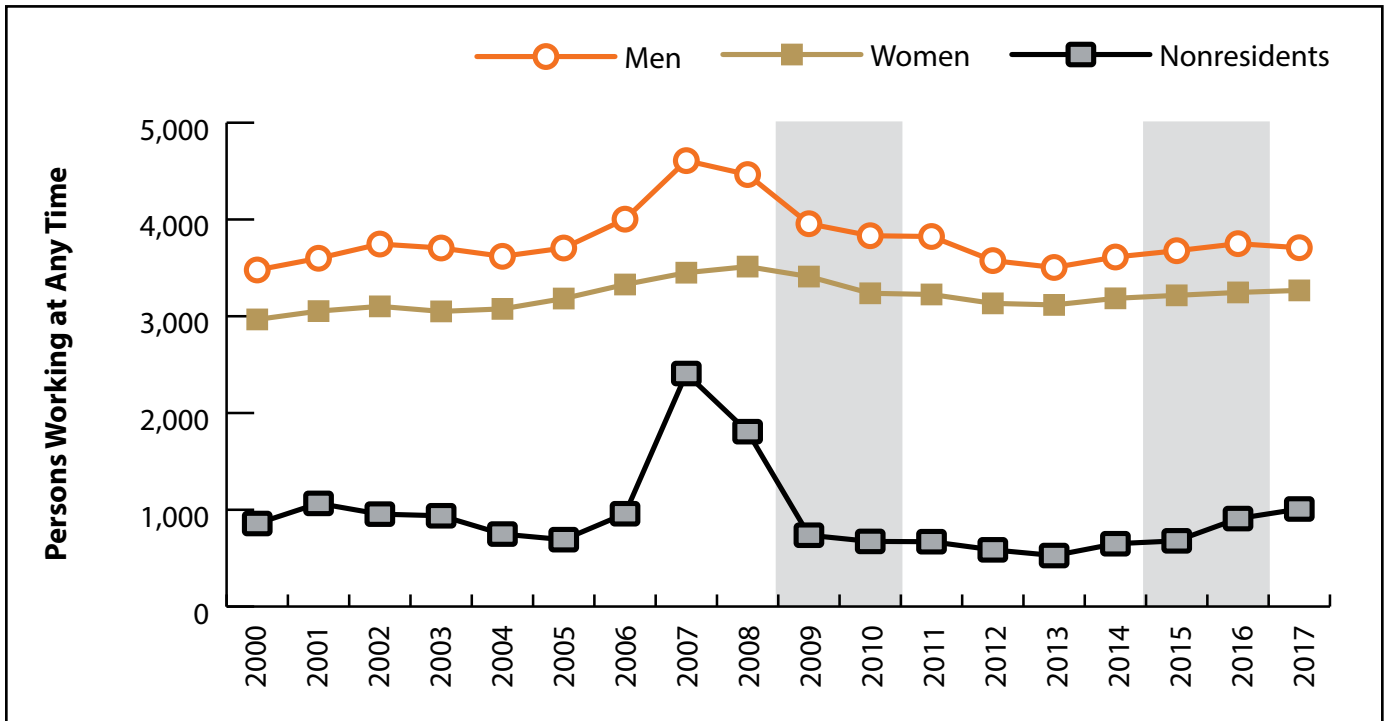


Figure: Persons Working in Lincoln County at Any Time by Gender, 2000-2017

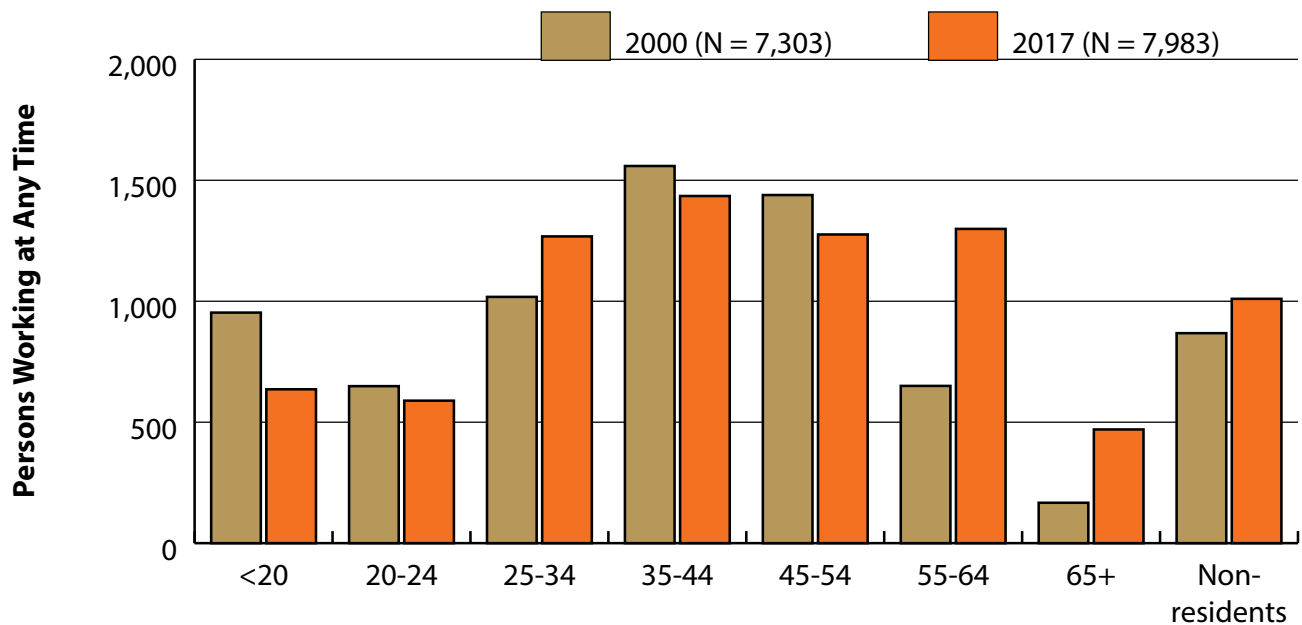


Figure: Persons Working in Lincoln County at Any Time by Age, 2000-2017

Note: Nonresidents are individuals for whom demographic data are not available.
 Shaded areas indicate periods of economic downturn: 2009Q1-2010Q1 and 2015Q2-2016Q4.
 Source: Demographics of Persons Working in Wyoming by County, Industry, Age, & Gender, 2000-2017. Research & Planning, Wyoming Department of Workforce Services. Prepared by M. Moore, Research & Planning, WY DWS, 6/12/18.

Wages for Persons Working in Lincoln County by Gender, 2000-2017

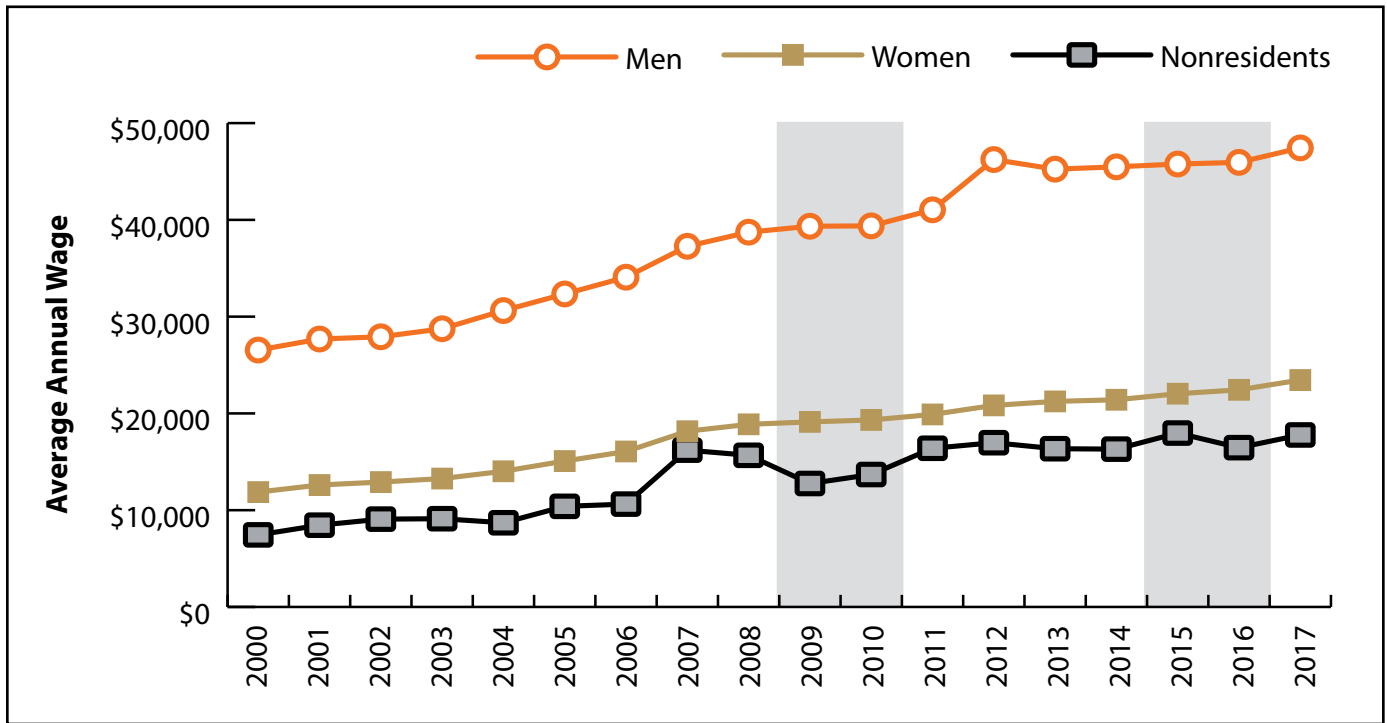


Figure: Average Annual Wage for Persons Working in Lincoln County at Any Time by Age, 2000-2017

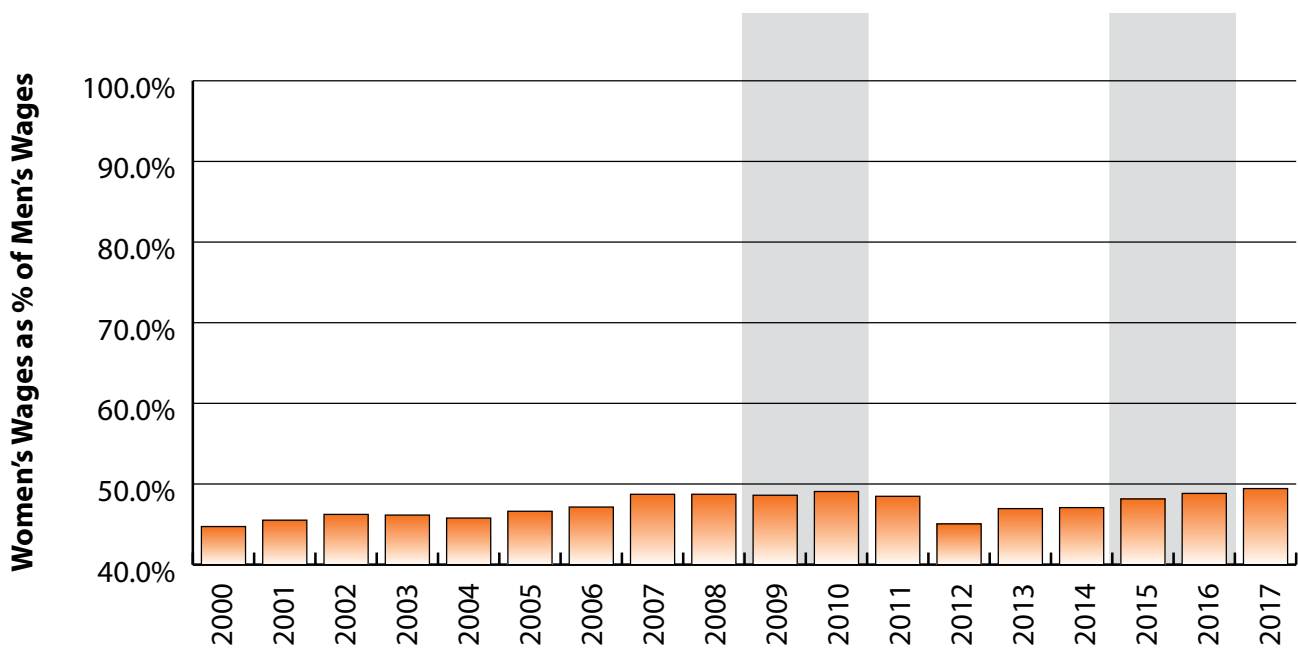


Figure: Women's Average Annual Wages as a Percent of Men's Wages for Persons Working in Lincoln County at Any Time by Age, 2000-2017

Note: Nonresidents are individuals for whom demographic data are not available.
 Shaded areas indicate periods of economic downturn: 2009Q1-2010Q1 and 2015Q2-2016Q4.
 Source: Demographics of Persons Working in Wyoming by County, Industry, Age, & Gender, 2000-2017. Research & Planning, Wyoming Department of Workforce Services. Prepared by M. Moore, Research & Planning, WY DWS, 6/12/18.

Average Earnings by Age and Gender with Place of Work in Lincoln County in 2000

Gender	Age Group	Number	Age Percent	Gender Percent	Average Annual Wage	Average Quarters Worked	Average Annual Employers
Women	00-19	474	16.0	0.0	\$2,660	2.6	1.5
Women	20-24	305	10.3	0.0	\$6,309	2.7	1.6
Women	25-34	461	15.5	0.0	\$10,961	3.1	1.5
Women	35-44	726	24.5	0.0	\$14,310	3.4	1.4
Women	45-54	655	22.1	0.0	\$17,594	3.6	1.3
Women	55-64	272	9.2	0.0	\$15,680	3.5	1.3
Women	65-Up	71	2.4	0.0	\$11,294	3.1	1.1
Women	N/A	3	0.1	0.0	\$2,975	1.3	1.0
Women	Total	2,967	100.0	40.6	\$11,873	3.2	1.4
Men	00-19	479	13.8	0.0	\$3,535	2.5	1.5
Men	20-24	344	9.9	0.0	\$12,298	2.8	1.6
Men	25-34	557	16.0	0.0	\$24,479	3.3	1.6
Men	35-44	833	24.0	0.0	\$34,766	3.4	1.4
Men	45-54	784	22.5	0.0	\$38,733	3.5	1.3
Men	55-64	378	10.9	0.0	\$31,982	3.3	1.2
Men	65-Up	96	2.8	0.0	\$13,332	2.8	1.1
Men	N/A	7	0.2	0.0	\$10,699	2.0	1.1
Men	Total	3,478	100.0	47.6	\$26,547	3.2	1.4
N/A	N/A	858	100.0	0.0	\$7,448	1.7	1.1
N/A	Total	858	100.0	11.7	\$7,448	1.7	1.1
Total	00-19	953	13.0	0.0	\$3,100	2.6	1.5
Total	20-24	649	8.9	0.0	\$9,483	2.8	1.6
Total	25-34	1,018	13.9	0.0	\$18,358	3.2	1.5
Total	35-44	1,559	21.3	0.0	\$25,240	3.4	1.4
Total	45-54	1,439	19.7	0.0	\$29,111	3.5	1.3
Total	55-64	650	8.9	0.0	\$25,160	3.4	1.2
Total	65-Up	167	2.3	0.0	\$12,466	2.9	1.1
Total	N/A	868	11.9	0.0	\$7,459	1.7	1.1
Total	Total	7,303	100.0	100.0	\$18,341	3.0	1.4

Note: Persons worked at any time during the year.

County Determination: Based on county of employment in which the person made the most money in the year.

N/A: Represents persons with demographic data that is unavailable.

N/A = Nonresidents, individuals for whom demographic data are not available.

Source: Demographics of Persons Working in Wyoming by County, Industry, Age, & Gender, 2000-2017.
Research & Planning, Wyoming Department of Workforce Services.

Prepared by M. Moore, Research & Planning, WY DWS, 6/12/18.

Average Earnings by Age and Gender with Place of Work in Lincoln County in 2001

Gender	Age Group	Number	Age Percent	Gender Percent	Average Annual Wage	Average Quarters Worked	Average Annual Employers
Women	00-19	494	16.2	0.0	\$2,737	2.5	1.4
Women	20-24	324	10.6	0.0	\$6,301	2.7	1.6
Women	25-34	447	14.6	0.0	\$11,455	3.1	1.6
Women	35-44	722	23.6	0.0	\$14,542	3.4	1.4
Women	45-54	680	22.3	0.0	\$19,031	3.5	1.3
Women	55-64	308	10.1	0.0	\$17,879	3.5	1.3
Women	65-Up	74	2.4	0.0	\$13,164	3.3	1.1
Women	N/A	4	0.1	0.0	\$9,297	2.0	1.0
Women	Total	3,053	100.0	39.6	\$12,602	3.2	1.4
Men	00-19	488	13.6	0.0	\$3,853	2.5	1.5
Men	20-24	389	10.8	0.0	\$13,133	2.8	1.7
Men	25-34	585	16.3	0.0	\$24,355	3.2	1.5
Men	35-44	813	22.6	0.0	\$35,027	3.3	1.3
Men	45-54	817	22.7	0.0	\$42,850	3.4	1.2
Men	55-64	394	10.9	0.0	\$33,953	3.4	1.2
Men	65-Up	108	3.0	0.0	\$13,843	2.8	1.1
Men	N/A	5	0.1	0.0	\$10,439	1.4	1.0
Men	Total	3,599	100.0	46.6	\$27,687	3.1	1.4
N/A	N/A	1,066	100.0	0.0	\$8,449	1.5	1.1
N/A	Total	1,066	100.0	13.8	\$8,449	1.5	1.1
Total	00-19	982	12.7	0.0	\$3,292	2.5	1.5
Total	20-24	713	9.2	0.0	\$10,028	2.8	1.7
Total	25-34	1,032	13.4	0.0	\$18,767	3.1	1.5
Total	35-44	1,535	19.9	0.0	\$25,392	3.3	1.4
Total	45-54	1,497	19.4	0.0	\$32,031	3.5	1.3
Total	55-64	702	9.1	0.0	\$26,901	3.4	1.2
Total	65-Up	182	2.4	0.0	\$13,567	3.0	1.1
Total	N/A	1,075	13.9	0.0	\$8,461	1.5	1.1
Total	Total	7,718	100.0	100.0	\$19,063	2.9	1.4

Note: Persons worked at any time during the year.

County Determination: Based on county of employment in which the person made the most money in the year.

N/A: Represents persons with demographic data that is unavailable.

N/A = Nonresidents, individuals for whom demographic data are not available.

Source: Demographics of Persons Working in Wyoming by County, Industry, Age, & Gender, 2000-2017.

Research & Planning, Wyoming Department of Workforce Services.

Prepared by M. Moore, Research & Planning, WY DWS, 6/12/18.

Average Earnings by Age and Gender with Place of Work in Lincoln County in 2002

Gender	Age Group	Number	Age Percent	Gender Percent	Average Annual Wage	Average Quarters Worked	Average Annual Employers
Women	00-19	482	15.5	0.0	\$2,797	2.5	1.6
Women	20-24	316	10.2	0.0	\$6,347	2.7	1.6
Women	25-34	470	15.2	0.0	\$12,074	3.1	1.5
Women	35-44	699	22.5	0.0	\$15,808	3.4	1.4
Women	45-54	696	22.4	0.0	\$18,486	3.5	1.3
Women	55-64	364	11.7	0.0	\$16,936	3.4	1.2
Women	65-Up	74	2.4	0.0	\$12,484	3.4	1.1
Women	N/A	1	0.0	0.0	\$2,551	1.0	1.0
Women	Total	3,102	100.0	39.8	\$12,906	3.2	1.4
Men	00-19	491	13.1	0.0	\$3,525	2.4	1.4
Men	20-24	432	11.5	0.0	\$13,162	2.7	1.7
Men	25-34	653	17.4	0.0	\$25,967	3.3	1.5
Men	35-44	799	21.3	0.0	\$36,057	3.4	1.4
Men	45-54	836	22.3	0.0	\$43,062	3.5	1.3
Men	55-64	421	11.2	0.0	\$32,441	3.3	1.3
Men	65-Up	114	3.0	0.0	\$15,223	2.8	1.2
Men	Total	3,746	100.0	48.0	\$27,917	3.2	1.4
N/A	N/A	955	100.0	0.0	\$9,076	1.6	1.1
N/A	Total	955	100.0	12.2	\$9,076	1.6	1.1
Total	00-19	973	12.5	0.0	\$3,164	2.5	1.5
Total	20-24	748	9.6	0.0	\$10,283	2.7	1.7
Total	25-34	1,123	14.4	0.0	\$20,152	3.2	1.5
Total	35-44	1,498	19.2	0.0	\$26,608	3.4	1.4
Total	45-54	1,532	19.6	0.0	\$31,897	3.5	1.3
Total	55-64	785	10.1	0.0	\$25,252	3.3	1.2
Total	65-Up	188	2.4	0.0	\$14,145	3.0	1.1
Total	N/A	956	12.3	0.0	\$9,069	1.6	1.1
Total	Total	7,803	100.0	100.0	\$19,644	3.0	1.4

Note: Persons worked at any time during the year.

County Determination: Based on county of employment in which the person made the most money in the year.

N/A: Represents persons with demographic data that is unavailable.

N/A = Nonresidents, individuals for whom demographic data are not available.

Source: Demographics of Persons Working in Wyoming by County, Industry, Age, & Gender, 2000-2017.

Research & Planning, Wyoming Department of Workforce Services.

Prepared by M. Moore, Research & Planning, WY DWS, 6/12/18.

Average Earnings by Age and Gender with Place of Work in Lincoln County in 2003

Gender	Age Group	Number	Age Percent	Gender Percent	Average Annual Wage	Average Quarters Worked	Average Annual Employers
Women	00-19	440	14.4	0.0	\$3,018	2.6	1.6
Women	20-24	300	9.8	0.0	\$6,600	2.7	1.6
Women	25-34	486	15.9	0.0	\$11,705	3.1	1.5
Women	35-44	632	20.7	0.0	\$15,986	3.4	1.3
Women	45-54	728	23.9	0.0	\$19,136	3.5	1.3
Women	55-64	368	12.1	0.0	\$17,167	3.5	1.2
Women	65-Up	95	3.1	0.0	\$11,722	3.0	1.1
Women	N/A	1	0.0	0.0	\$2,618	1.0	1.0
Women	Total	3,050	100.0	39.6	\$13,267	3.2	1.4
Men	00-19	439	11.8	0.0	\$3,773	2.5	1.4
Men	20-24	447	12.1	0.0	\$13,273	2.8	1.6
Men	25-34	672	18.1	0.0	\$27,663	3.2	1.4
Men	35-44	712	19.2	0.0	\$35,655	3.4	1.3
Men	45-54	886	23.9	0.0	\$41,785	3.5	1.2
Men	55-64	438	11.8	0.0	\$37,143	3.4	1.2
Men	65-Up	110	3.0	0.0	\$14,964	3.0	1.1
Men	N/A	1	0.0	0.0	\$13,361	1.0	1.0
Men	Total	3,705	100.0	48.2	\$28,749	3.2	1.3
N/A	N/A	938	100.0	0.0	\$9,118	1.7	1.1
N/A	Total	938	100.0	12.2	\$9,118	1.7	1.1
Total	00-19	879	11.4	0.0	\$3,395	2.5	1.5
Total	20-24	747	9.7	0.0	\$10,593	2.8	1.6
Total	25-34	1,158	15.1	0.0	\$20,966	3.2	1.5
Total	35-44	1,344	17.5	0.0	\$26,406	3.4	1.3
Total	45-54	1,614	21.0	0.0	\$31,569	3.5	1.3
Total	55-64	806	10.5	0.0	\$28,022	3.4	1.2
Total	65-Up	205	2.7	0.0	\$13,461	3.0	1.1
Total	N/A	940	12.2	0.0	\$9,116	1.7	1.1
Total	Total	7,693	100.0	100.0	\$20,217	3.0	1.3

Note: Persons worked at any time during the year.

County Determination: Based on county of employment in which the person made the most money in the year.

N/A: Represents persons with demographic data that is unavailable.

N/A = Nonresidents, individuals for whom demographic data are not available.

Source: Demographics of Persons Working in Wyoming by County, Industry, Age, & Gender, 2000-2017.
Research & Planning, Wyoming Department of Workforce Services.

Prepared by M. Moore, Research & Planning, WY DWS, 6/12/18.

Average Earnings by Age and Gender with Place of Work in Lincoln County in 2004

Gender	Age Group	Number	Age Percent	Gender Percent	Average Annual Wage	Average Quarters Worked	Average Annual Employers
Women	00-19	446	14.5	0.0	\$2,899	2.6	1.5
Women	20-24	302	9.8	0.0	\$8,116	2.9	1.7
Women	25-34	504	16.4	0.0	\$12,621	3.1	1.4
Women	35-44	595	19.3	0.0	\$16,884	3.4	1.4
Women	45-54	737	24.0	0.0	\$19,858	3.6	1.3
Women	55-64	393	12.8	0.0	\$17,947	3.5	1.2
Women	65-Up	97	3.2	0.0	\$13,213	3.2	1.1
Women	N/A	2	0.1	0.0	\$3,014	1.5	1.0
Women	Total	3,076	100.0	41.3	\$14,021	3.2	1.4
Men	00-19	442	12.2	0.0	\$3,914	2.5	1.4
Men	20-24	402	11.1	0.0	\$14,557	2.9	1.6
Men	25-34	691	19.1	0.0	\$27,591	3.2	1.4
Men	35-44	675	18.7	0.0	\$37,513	3.4	1.3
Men	45-54	839	23.2	0.0	\$46,291	3.6	1.2
Men	55-64	462	12.8	0.0	\$40,027	3.5	1.2
Men	65-Up	108	3.0	0.0	\$14,300	2.9	1.1
Men	Total	3,619	100.0	48.6	\$30,628	3.2	1.3
N/A	N/A	749	100.0	0.0	\$8,699	1.8	1.1
N/A	Total	749	100.0	10.1	\$8,699	1.8	1.1
Total	00-19	888	11.9	0.0	\$3,404	2.6	1.5
Total	20-24	704	9.5	0.0	\$11,794	2.9	1.6
Total	25-34	1,195	16.1	0.0	\$21,277	3.2	1.4
Total	35-44	1,270	17.1	0.0	\$27,848	3.4	1.3
Total	45-54	1,576	21.2	0.0	\$33,930	3.6	1.3
Total	55-64	855	11.5	0.0	\$29,878	3.5	1.2
Total	65-Up	205	2.8	0.0	\$13,785	3.1	1.1
Total	N/A	751	10.1	0.0	\$8,684	1.8	1.1
Total	Total	7,444	100.0	100.0	\$21,559	3.1	1.3

Note: Persons worked at any time during the year.

County Determination: Based on county of employment in which the person made the most money in the year.

N/A: Represents persons with demographic data that is unavailable.

N/A = Nonresidents, individuals for whom demographic data are not available.

Source: Demographics of Persons Working in Wyoming by County, Industry, Age, & Gender, 2000-2017.
Research & Planning, Wyoming Department of Workforce Services.

Prepared by M. Moore, Research & Planning, WY DWS, 6/12/18.

Average Earnings by Age and Gender with Place of Work in Lincoln County in 2005

Gender	Age Group	Number	Age Percent	Gender Percent	Average Annual Wage	Average Quarters Worked	Average Annual Employers
Women	00-19	477	15.0	0.0	\$2,958	2.6	1.6
Women	20-24	308	9.7	0.0	\$8,357	2.9	1.8
Women	25-34	515	16.2	0.0	\$12,551	3.2	1.5
Women	35-44	594	18.7	0.0	\$18,807	3.4	1.4
Women	45-54	761	23.9	0.0	\$21,318	3.6	1.3
Women	55-64	423	13.3	0.0	\$21,004	3.5	1.2
Women	65-Up	105	3.3	0.0	\$12,058	3.0	1.2
Women	Total	3,183	100.0	42.0	\$15,078	3.3	1.4
Men	00-19	453	12.2	0.0	\$4,355	2.5	1.5
Men	20-24	379	10.2	0.0	\$15,268	2.8	1.5
Men	25-34	712	19.2	0.0	\$28,862	3.2	1.4
Men	35-44	686	18.5	0.0	\$39,525	3.4	1.3
Men	45-54	861	23.2	0.0	\$49,413	3.6	1.2
Men	55-64	500	13.5	0.0	\$40,001	3.3	1.2
Men	65-Up	114	3.1	0.0	\$16,344	3.1	1.1
Men	Total	3,705	100.0	48.9	\$32,343	3.2	1.3
N/A	N/A	691	100.0	0.0	\$10,398	2.0	1.1
N/A	Total	691	100.0	9.1	\$10,398	2.0	1.1
Total	00-19	930	12.3	0.0	\$3,638	2.6	1.6
Total	20-24	687	9.1	0.0	\$12,170	2.9	1.6
Total	25-34	1,227	16.2	0.0	\$22,016	3.2	1.5
Total	35-44	1,280	16.9	0.0	\$29,911	3.4	1.3
Total	45-54	1,622	21.4	0.0	\$36,232	3.6	1.3
Total	55-64	923	12.2	0.0	\$31,295	3.4	1.2
Total	65-Up	219	2.9	0.0	\$14,289	3.1	1.1
Total	N/A	691	9.1	0.0	\$10,398	2.0	1.1
Total	Total	7,579	100.0	100.0	\$23,091	3.1	1.4

Note: Persons worked at any time during the year.

County Determination: Based on county of employment in which the person made the most money in the year.

N/A: Represents persons with demographic data that is unavailable.

N/A = Nonresidents, individuals for whom demographic data are not available.

Source: Demographics of Persons Working in Wyoming by County, Industry, Age, & Gender, 2000-2017.
Research & Planning, Wyoming Department of Workforce Services.

Prepared by M. Moore, Research & Planning, WY DWS, 6/12/18.

Average Earnings by Age and Gender with Place of Work in Lincoln County in 2006

Gender	Age Group	Number	Age Percent	Gender Percent	Average Annual Wage	Average Quarters Worked	Average Annual Employers
Women	00-19	475	14.3	0.0	\$3,239	2.7	1.7
Women	20-24	333	10.0	0.0	\$8,489	2.8	1.8
Women	25-34	560	16.8	0.0	\$13,568	3.1	1.5
Women	35-44	597	17.9	0.0	\$20,056	3.5	1.4
Women	45-54	808	24.3	0.0	\$22,569	3.5	1.3
Women	55-64	443	13.3	0.0	\$22,185	3.5	1.2
Women	65-Up	111	3.3	0.0	\$13,115	3.1	1.1
Women	N/A	1	0.0	0.0	\$7,440	2.0	1.0
Women	Total	3,328	100.0	40.1	\$16,065	3.2	1.4
Men	00-19	512	12.8	0.0	\$5,137	2.5	1.5
Men	20-24	423	10.6	0.0	\$16,692	2.8	1.7
Men	25-34	796	19.9	0.0	\$32,577	3.3	1.5
Men	35-44	701	17.5	0.0	\$41,595	3.4	1.4
Men	45-54	883	22.1	0.0	\$51,861	3.6	1.3
Men	55-64	557	13.9	0.0	\$42,996	3.4	1.2
Men	65-Up	131	3.3	0.0	\$14,424	2.9	1.2
Men	Total	4,003	100.0	48.3	\$34,077	3.2	1.4
N/A	N/A	959	100.0	0.0	\$10,628	1.9	1.2
N/A	Total	959	100.0	11.6	\$10,628	1.9	1.2
Total	00-19	987	11.9	0.0	\$4,224	2.6	1.6
Total	20-24	756	9.1	0.0	\$13,079	2.8	1.7
Total	25-34	1,356	16.4	0.0	\$24,727	3.2	1.5
Total	35-44	1,298	15.7	0.0	\$31,688	3.4	1.4
Total	45-54	1,691	20.4	0.0	\$37,865	3.6	1.3
Total	55-64	1,000	12.1	0.0	\$33,777	3.5	1.2
Total	65-Up	242	2.9	0.0	\$13,824	3.0	1.1
Total	N/A	960	11.6	0.0	\$10,624	1.9	1.2
Total	Total	8,290	100.0	100.0	\$24,133	3.1	1.4

Note: Persons worked at any time during the year.

County Determination: Based on county of employment in which the person made the most money in the year.

N/A: Represents persons with demographic data that is unavailable.

N/A = Nonresidents, individuals for whom demographic data are not available.

Source: Demographics of Persons Working in Wyoming by County, Industry, Age, & Gender, 2000-2017.
Research & Planning, Wyoming Department of Workforce Services.

Prepared by M. Moore, Research & Planning, WY DWS, 6/12/18.

Average Earnings by Age and Gender with Place of Work in Lincoln County in 2007

Gender	Age Group	Number	Age Percent	Gender Percent	Average Annual Wage	Average Quarters Worked	Average Annual Employers
Women	00-19	466	13.5	0.0	\$3,947	2.6	1.5
Women	20-24	366	10.6	0.0	\$9,983	2.9	1.7
Women	25-34	595	17.2	0.0	\$15,389	3.2	1.5
Women	35-44	608	17.6	0.0	\$22,402	3.5	1.4
Women	45-54	788	22.8	0.0	\$25,956	3.6	1.3
Women	55-64	509	14.8	0.0	\$23,391	3.5	1.2
Women	65-Up	118	3.4	0.0	\$17,112	3.3	1.1
Women	Total	3,450	100.0	33.0	\$18,159	3.3	1.4
Men	00-19	538	11.7	0.0	\$5,973	2.6	1.6
Men	20-24	482	10.5	0.0	\$21,116	2.8	1.6
Men	25-34	992	21.5	0.0	\$36,217	3.2	1.4
Men	35-44	822	17.8	0.0	\$44,488	3.3	1.4
Men	45-54	1,008	21.9	0.0	\$52,899	3.4	1.3
Men	55-64	619	13.4	0.0	\$46,989	3.3	1.2
Men	65-Up	146	3.2	0.0	\$22,991	3.1	1.2
Men	N/A	1	0.0	0.0	\$84,797	4.0	1.0
Men	Total	4,608	100.0	44.0	\$37,269	3.2	1.4
N/A	N/A	2,408	100.0	0.0	\$16,205	1.8	1.1
N/A	Total	2,408	100.0	23.0	\$16,205	1.8	1.1
Total	00-19	1,004	9.6	0.0	\$5,033	2.6	1.6
Total	20-24	848	8.1	0.0	\$16,311	2.8	1.6
Total	25-34	1,587	15.2	0.0	\$28,408	3.2	1.5
Total	35-44	1,430	13.7	0.0	\$35,098	3.3	1.4
Total	45-54	1,796	17.2	0.0	\$41,078	3.5	1.3
Total	55-64	1,128	10.8	0.0	\$36,340	3.4	1.2
Total	65-Up	264	2.5	0.0	\$20,363	3.2	1.2
Total	N/A	2,409	23.0	0.0	\$16,233	1.8	1.1
Total	Total	10,466	100.0	100.0	\$26,123	2.9	1.3

Note: Persons worked at any time during the year.

County Determination: Based on county of employment in which the person made the most money in the year.

N/A: Represents persons with demographic data that is unavailable.

N/A = Nonresidents, individuals for whom demographic data are not available.

Source: Demographics of Persons Working in Wyoming by County, Industry, Age, & Gender, 2000-2017.
Research & Planning, Wyoming Department of Workforce Services.

Prepared by M. Moore, Research & Planning, WY DWS, 6/12/18.

Average Earnings by Age and Gender with Place of Work in Lincoln County in 2008

Gender	Age Group	Number	Age Percent	Gender Percent	Average Annual Wage	Average Quarters Worked	Average Annual Employers
Women	00-19	436	12.4	0.0	\$3,923	2.6	1.4
Women	20-24	363	10.3	0.0	\$9,892	2.9	1.7
Women	25-34	610	17.4	0.0	\$16,373	3.2	1.4
Women	35-44	658	18.7	0.0	\$22,340	3.4	1.4
Women	45-54	784	22.3	0.0	\$26,249	3.5	1.3
Women	55-64	536	15.3	0.0	\$25,058	3.6	1.2
Women	65-Up	126	3.6	0.0	\$18,275	3.2	1.2
Women	Total	3,513	100.0	35.9	\$18,873	3.3	1.4
Men	00-19	473	10.6	0.0	\$5,211	2.6	1.5
Men	20-24	431	9.7	0.0	\$22,810	3.0	1.5
Men	25-34	1,000	22.4	0.0	\$36,369	3.2	1.4
Men	35-44	809	18.1	0.0	\$45,473	3.3	1.3
Men	45-54	964	21.6	0.0	\$53,742	3.4	1.2
Men	55-64	618	13.8	0.0	\$51,360	3.4	1.2
Men	65-Up	167	3.7	0.0	\$23,179	3.0	1.1
Men	N/A	2	0.0	0.0	\$10,199	1.5	1.0
Men	Total	4,464	100.0	45.6	\$38,730	3.2	1.3
N/A	N/A	1,807	100.0	0.0	\$15,671	1.7	1.1
N/A	Total	1,807	100.0	18.5	\$15,671	1.7	1.1
Total	00-19	909	9.3	0.0	\$4,593	2.6	1.5
Total	20-24	794	8.1	0.0	\$16,904	2.9	1.6
Total	25-34	1,610	16.5	0.0	\$28,793	3.2	1.4
Total	35-44	1,467	15.0	0.0	\$35,097	3.3	1.3
Total	45-54	1,748	17.9	0.0	\$41,411	3.5	1.2
Total	55-64	1,154	11.8	0.0	\$39,144	3.5	1.2
Total	65-Up	293	3.0	0.0	\$21,070	3.1	1.2
Total	N/A	1,809	18.5	0.0	\$15,665	1.7	1.1
Total	Total	9,784	100.0	100.0	\$27,342	2.9	1.3

Note: Persons worked at any time during the year.

County Determination: Based on county of employment in which the person made the most money in the year.

N/A: Represents persons with demographic data that is unavailable.

N/A = Nonresidents, individuals for whom demographic data are not available.

Source: Demographics of Persons Working in Wyoming by County, Industry, Age, & Gender, 2000-2017.
Research & Planning, Wyoming Department of Workforce Services.

Prepared by M. Moore, Research & Planning, WY DWS, 6/12/18.

Average Earnings by Age and Gender with Place of Work in Lincoln County in 2009

Gender	Age Group	Number	Age Percent	Gender Percent	Average Annual Wage	Average Quarters Worked	Average Annual Employers
Women	00-19	363	10.6	0.0	\$3,676	2.6	1.4
Women	20-24	329	9.6	0.0	\$9,230	2.9	1.6
Women	25-34	602	17.7	0.0	\$16,513	3.2	1.3
Women	35-44	647	19.0	0.0	\$21,463	3.4	1.3
Women	45-54	766	22.5	0.0	\$26,761	3.6	1.2
Women	55-64	557	16.3	0.0	\$26,073	3.5	1.2
Women	65-Up	146	4.3	0.0	\$13,632	3.2	1.2
Women	Total	3,410	100.0	42.1	\$19,123	3.3	1.3
Men	00-19	364	9.2	0.0	\$4,528	2.5	1.3
Men	20-24	364	9.2	0.0	\$18,951	3.0	1.4
Men	25-34	884	22.3	0.0	\$36,651	3.3	1.3
Men	35-44	716	18.1	0.0	\$46,992	3.4	1.2
Men	45-54	848	21.4	0.0	\$54,459	3.5	1.2
Men	55-64	615	15.5	0.0	\$50,556	3.5	1.1
Men	65-Up	165	4.2	0.0	\$22,851	3.1	1.1
Men	Total	3,956	100.0	48.8	\$39,342	3.3	1.2
N/A	N/A	737	100.0	0.0	\$12,757	2.1	1.1
N/A	Total	737	100.0	9.1	\$12,757	2.1	1.1
Total	00-19	727	9.0	0.0	\$4,103	2.5	1.4
Total	20-24	693	8.6	0.0	\$14,336	2.9	1.5
Total	25-34	1,486	18.3	0.0	\$28,493	3.3	1.3
Total	35-44	1,363	16.8	0.0	\$34,874	3.4	1.2
Total	45-54	1,614	19.9	0.0	\$41,313	3.6	1.2
Total	55-64	1,172	14.5	0.0	\$38,920	3.5	1.1
Total	65-Up	311	3.8	0.0	\$18,523	3.1	1.1
Total	N/A	737	9.1	0.0	\$12,757	2.1	1.1
Total	Total	8,103	100.0	100.0	\$28,415	3.2	1.2

Note: Persons worked at any time during the year.

County Determination: Based on county of employment in which the person made the most money in the year.

N/A: Represents persons with demographic data that is unavailable.

N/A = Nonresidents, individuals for whom demographic data are not available.

Source: Demographics of Persons Working in Wyoming by County, Industry, Age, & Gender, 2000-2017.
Research & Planning, Wyoming Department of Workforce Services.

Prepared by M. Moore, Research & Planning, WY DWS, 6/12/18.

Average Earnings by Age and Gender with Place of Work in Lincoln County in 2010

Gender	Age Group	Number	Age Percent	Gender Percent	Average Annual Wage	Average Quarters Worked	Average Annual Employers
Women	00-19	339	10.5	0.0	\$3,798	2.5	1.4
Women	20-24	299	9.2	0.0	\$10,118	3.0	1.5
Women	25-34	554	17.1	0.0	\$16,586	3.2	1.4
Women	35-44	626	19.3	0.0	\$21,748	3.5	1.3
Women	45-54	721	22.3	0.0	\$26,648	3.6	1.2
Women	55-64	549	17.0	0.0	\$26,219	3.6	1.2
Women	65-Up	149	4.6	0.0	\$12,216	3.2	1.1
Women	Total	3,237	100.0	41.8	\$19,322	3.3	1.3
Men	00-19	293	7.6	0.0	\$4,539	2.4	1.3
Men	20-24	349	9.1	0.0	\$17,866	2.9	1.4
Men	25-34	830	21.7	0.0	\$36,716	3.3	1.3
Men	35-44	705	18.4	0.0	\$47,701	3.4	1.2
Men	45-54	832	21.7	0.0	\$51,834	3.4	1.2
Men	55-64	639	16.7	0.0	\$49,914	3.4	1.1
Men	65-Up	184	4.8	0.0	\$22,879	3.0	1.1
Men	Total	3,832	100.0	49.5	\$39,379	3.2	1.2
N/A	N/A	673	100.0	0.0	\$13,685	2.0	1.1
N/A	Total	673	100.0	8.7	\$13,685	2.0	1.1
Total	00-19	632	8.2	0.0	\$4,142	2.5	1.4
Total	20-24	648	8.4	0.0	\$14,291	2.9	1.5
Total	25-34	1,384	17.9	0.0	\$28,658	3.3	1.3
Total	35-44	1,331	17.2	0.0	\$35,495	3.4	1.3
Total	45-54	1,553	20.1	0.0	\$40,141	3.5	1.2
Total	55-64	1,188	15.3	0.0	\$38,964	3.5	1.1
Total	65-Up	333	4.3	0.0	\$18,108	3.1	1.1
Total	N/A	673	8.7	0.0	\$13,685	2.0	1.1
Total	Total	7,742	100.0	100.0	\$28,759	3.2	1.2

Note: Persons worked at any time during the year.

County Determination: Based on county of employment in which the person made the most money in the year.

N/A: Represents persons with demographic data that is unavailable.

N/A = Nonresidents, individuals for whom demographic data are not available.

Source: Demographics of Persons Working in Wyoming by County, Industry, Age, & Gender, 2000-2017.
Research & Planning, Wyoming Department of Workforce Services.

Prepared by M. Moore, Research & Planning, WY DWS, 6/12/18.

Average Earnings by Age and Gender with Place of Work in Lincoln County in 2011

Gender	Age Group	Number	Age Percent	Gender Percent	Average Annual Wage	Average Quarters Worked	Average Annual Employers
Women	00-19	331	10.3	0.0	\$3,513	2.4	1.4
Women	20-24	297	9.2	0.0	\$9,680	2.8	1.6
Women	25-34	556	17.2	0.0	\$17,372	3.1	1.3
Women	35-44	623	19.3	0.0	\$22,315	3.4	1.3
Women	45-54	707	21.9	0.0	\$27,280	3.6	1.3
Women	55-64	540	16.7	0.0	\$27,662	3.6	1.2
Women	65-Up	171	5.3	0.0	\$13,653	3.1	1.1
Women	Total	3,225	100.0	41.8	\$19,894	3.3	1.3
Men	00-19	301	7.9	0.0	\$4,429	2.4	1.4
Men	20-24	345	9.0	0.0	\$16,206	2.7	1.5
Men	25-34	808	21.1	0.0	\$38,542	3.3	1.3
Men	35-44	727	19.0	0.0	\$50,224	3.4	1.3
Men	45-54	795	20.8	0.0	\$53,247	3.4	1.2
Men	55-64	660	17.3	0.0	\$54,301	3.5	1.2
Men	65-Up	188	4.9	0.0	\$22,271	3.0	1.1
Men	Total	3,824	100.0	49.5	\$41,039	3.2	1.3
N/A	N/A	670	100.0	0.0	\$16,398	2.0	1.1
N/A	Total	670	100.0	8.7	\$16,398	2.0	1.1
Total	00-19	632	8.2	0.0	\$3,949	2.4	1.4
Total	20-24	642	8.3	0.0	\$13,187	2.8	1.5
Total	25-34	1,364	17.7	0.0	\$29,913	3.2	1.3
Total	35-44	1,350	17.5	0.0	\$37,344	3.4	1.3
Total	45-54	1,502	19.5	0.0	\$41,024	3.5	1.2
Total	55-64	1,200	15.5	0.0	\$42,313	3.5	1.2
Total	65-Up	359	4.7	0.0	\$18,166	3.1	1.1
Total	N/A	670	8.7	0.0	\$16,398	2.0	1.1
Total	Total	7,719	100.0	100.0	\$30,066	3.1	1.3

Note: Persons worked at any time during the year.

County Determination: Based on county of employment in which the person made the most money in the year.

N/A: Represents persons with demographic data that is unavailable.

N/A = Nonresidents, individuals for whom demographic data are not available.

Source: Demographics of Persons Working in Wyoming by County, Industry, Age, & Gender, 2000-2017.

Research & Planning, Wyoming Department of Workforce Services.

Prepared by M. Moore, Research & Planning, WY DWS, 6/12/18.

Average Earnings by Age and Gender with Place of Work in Lincoln County in 2012

Gender	Age Group	Number	Age Percent	Gender Percent	Average Annual Wage	Average Quarters Worked	Average Annual Employers
Women	00-19	277	8.8	0.0	\$3,647	2.5	1.4
Women	20-24	296	9.4	0.0	\$10,202	2.9	1.6
Women	25-34	519	16.6	0.0	\$19,150	3.3	1.4
Women	35-44	647	20.7	0.0	\$23,486	3.5	1.4
Women	45-54	660	21.1	0.0	\$28,032	3.6	1.3
Women	55-64	563	18.0	0.0	\$27,390	3.5	1.2
Women	65-Up	171	5.5	0.0	\$12,697	3.2	1.1
Women	Total	3,133	100.0	43.0	\$20,829	3.3	1.3
Men	00-19	290	8.1	0.0	\$4,497	2.4	1.4
Men	20-24	299	8.4	0.0	\$18,244	2.9	1.6
Men	25-34	736	20.6	0.0	\$43,090	3.4	1.4
Men	35-44	704	19.7	0.0	\$54,827	3.4	1.3
Men	45-54	709	19.8	0.0	\$62,181	3.5	1.3
Men	55-64	656	18.3	0.0	\$59,819	3.5	1.4
Men	65-Up	181	5.1	0.0	\$27,007	3.1	1.1
Men	Total	3,575	100.0	49.0	\$46,234	3.3	1.4
N/A	N/A	586	100.0	0.0	\$16,973	2.1	1.2
N/A	Total	586	100.0	8.0	\$16,973	2.1	1.2
Total	00-19	567	7.8	0.0	\$4,081	2.5	1.4
Total	20-24	595	8.2	0.0	\$14,244	2.9	1.6
Total	25-34	1,255	17.2	0.0	\$33,190	3.3	1.4
Total	35-44	1,351	18.5	0.0	\$39,818	3.4	1.3
Total	45-54	1,369	18.8	0.0	\$45,718	3.6	1.3
Total	55-64	1,219	16.7	0.0	\$44,842	3.5	1.3
Total	65-Up	352	4.8	0.0	\$20,055	3.2	1.1
Total	N/A	586	8.0	0.0	\$16,973	2.1	1.2
Total	Total	7,294	100.0	100.0	\$32,971	3.2	1.3

Note: Persons worked at any time during the year.

County Determination: Based on county of employment in which the person made the most money in the year.

N/A: Represents persons with demographic data that is unavailable.

N/A = Nonresidents, individuals for whom demographic data are not available.

Source: Demographics of Persons Working in Wyoming by County, Industry, Age, & Gender, 2000-2017.
Research & Planning, Wyoming Department of Workforce Services.

Prepared by M. Moore, Research & Planning, WY DWS, 6/12/18.

Average Earnings by Age and Gender with Place of Work in Lincoln County in 2013

Gender	Age Group	Number	Age Percent	Gender Percent	Average Annual Wage	Average Quarters Worked	Average Annual Employers
Women	00-19	287	9.2	0.0	\$3,880	2.4	1.4
Women	20-24	287	9.2	0.0	\$10,849	2.9	1.6
Women	25-34	527	16.9	0.0	\$19,223	3.3	1.4
Women	35-44	623	20.0	0.0	\$23,843	3.5	1.3
Women	45-54	635	20.4	0.0	\$27,956	3.6	1.3
Women	55-64	589	18.9	0.0	\$28,647	3.6	1.2
Women	65-Up	169	5.4	0.0	\$14,007	3.3	1.1
Women	Total	3,117	100.0	43.6	\$21,240	3.3	1.3
Men	00-19	265	7.6	0.0	\$4,557	2.4	1.3
Men	20-24	309	8.8	0.0	\$16,860	2.9	1.6
Men	25-34	707	20.2	0.0	\$42,230	3.4	1.3
Men	35-44	718	20.5	0.0	\$57,507	3.6	1.2
Men	45-54	663	18.9	0.0	\$57,640	3.5	1.1
Men	55-64	643	18.4	0.0	\$58,899	3.5	1.2
Men	65-Up	198	5.7	0.0	\$24,582	3.1	1.1
Men	N/A	1	0.0	0.0	\$3,080	1.0	1.0
Men	Total	3,504	100.0	49.0	\$45,240	3.3	1.3
N/A	N/A	527	100.0	0.0	\$16,352	2.2	1.1
N/A	Total	527	100.0	7.4	\$16,352	2.2	1.1
Total	00-19	552	7.7	0.0	\$4,205	2.4	1.3
Total	20-24	596	8.3	0.0	\$13,965	2.9	1.6
Total	25-34	1,234	17.3	0.0	\$32,405	3.4	1.4
Total	35-44	1,341	18.8	0.0	\$41,868	3.5	1.3
Total	45-54	1,298	18.2	0.0	\$43,118	3.6	1.2
Total	55-64	1,232	17.2	0.0	\$44,436	3.5	1.2
Total	65-Up	367	5.1	0.0	\$19,712	3.2	1.1
Total	N/A	528	7.4	0.0	\$16,327	2.2	1.1
Total	Total	7,148	100.0	100.0	\$32,645	3.2	1.3

Note: Persons worked at any time during the year.

County Determination: Based on county of employment in which the person made the most money in the year.

N/A: Represents persons with demographic data that is unavailable.

N/A = Nonresidents, individuals for whom demographic data are not available.

Source: Demographics of Persons Working in Wyoming by County, Industry, Age, & Gender, 2000-2017.
Research & Planning, Wyoming Department of Workforce Services.

Prepared by M. Moore, Research & Planning, WY DWS, 6/12/18.

Average Earnings by Age and Gender with Place of Work in Lincoln County in 2014

Gender	Age Group	Number	Age Percent	Gender Percent	Average Annual Wage	Average Quarters Worked	Average Annual Employers
Women	00-19	306	9.6	0.0	\$3,695	2.4	1.4
Women	20-24	286	9.0	0.0	\$10,639	2.8	1.6
Women	25-34	561	17.6	0.0	\$18,813	3.3	1.4
Women	35-44	647	20.3	0.0	\$25,199	3.4	1.3
Women	45-54	622	19.5	0.0	\$28,817	3.6	1.3
Women	55-64	583	18.3	0.0	\$28,509	3.6	1.2
Women	65-Up	179	5.6	0.0	\$14,577	3.2	1.1
Women	N/A	1	0.0	0.0	\$2,700	1.0	1.0
Women	Total	3,185	100.0	42.8	\$21,409	3.3	1.3
Men	00-19	304	8.4	0.0	\$4,301	2.3	1.3
Men	20-24	304	8.4	0.0	\$17,952	2.8	1.5
Men	25-34	726	20.1	0.0	\$41,375	3.4	1.3
Men	35-44	769	21.3	0.0	\$59,560	3.6	1.2
Men	45-54	655	18.1	0.0	\$57,514	3.6	1.2
Men	55-64	647	17.9	0.0	\$59,192	3.5	1.1
Men	65-Up	206	5.7	0.0	\$27,614	3.2	1.2
Men	N/A	1	0.0	0.0	\$16,456	4.0	1.0
Men	Total	3,612	100.0	48.5	\$45,481	3.3	1.3
N/A	N/A	649	100.0	0.0	\$16,309	2.1	1.1
N/A	Total	649	100.0	8.7	\$16,309	2.1	1.1
Total	00-19	610	8.2	0.0	\$3,997	2.3	1.4
Total	20-24	590	7.9	0.0	\$14,407	2.8	1.5
Total	25-34	1,287	17.3	0.0	\$31,540	3.3	1.4
Total	35-44	1,416	19.0	0.0	\$43,859	3.5	1.3
Total	45-54	1,277	17.2	0.0	\$43,536	3.6	1.2
Total	55-64	1,230	16.5	0.0	\$44,649	3.6	1.2
Total	65-Up	385	5.2	0.0	\$21,552	3.2	1.1
Total	N/A	651	8.7	0.0	\$16,289	2.1	1.1
Total	Total	7,446	100.0	100.0	\$32,642	3.2	1.3

Note: Persons worked at any time during the year.

County Determination: Based on county of employment in which the person made the most money in the year.

N/A: Represents persons with demographic data that is unavailable.

N/A = Nonresidents, individuals for whom demographic data are not available.

Source: Demographics of Persons Working in Wyoming by County, Industry, Age, & Gender, 2000-2017.
Research & Planning, Wyoming Department of Workforce Services.

Prepared by M. Moore, Research & Planning, WY DWS, 6/12/18.

Average Earnings by Age and Gender with Place of Work in Lincoln County in 2015

Gender	Age Group	Number	Age Percent	Gender Percent	Average Annual Wage	Average Quarters Worked	Average Annual Employers
Women	00-19	326	10.1	0.0	\$3,669	2.4	1.5
Women	20-24	292	9.1	0.0	\$10,930	2.9	1.7
Women	25-34	564	17.5	0.0	\$18,987	3.2	1.4
Women	35-44	645	20.1	0.0	\$27,014	3.5	1.3
Women	45-54	622	19.3	0.0	\$29,455	3.6	1.3
Women	55-64	583	18.1	0.0	\$29,443	3.6	1.2
Women	65-Up	184	5.7	0.0	\$15,551	3.2	1.1
Women	Total	3,216	100.0	42.5	\$22,036	3.3	1.3
Men	00-19	313	8.5	0.0	\$5,036	2.5	1.4
Men	20-24	317	8.6	0.0	\$19,256	2.9	1.5
Men	25-34	726	19.7	0.0	\$41,309	3.4	1.4
Men	35-44	777	21.1	0.0	\$57,763	3.5	1.3
Men	45-54	664	18.1	0.0	\$57,976	3.6	1.3
Men	55-64	662	18.0	0.0	\$62,519	3.6	1.3
Men	65-Up	216	5.9	0.0	\$27,116	3.3	1.1
Men	N/A	2	0.1	0.0	\$2,102	2.0	1.0
Men	Total	3,677	100.0	48.6	\$45,770	3.3	1.3
N/A	N/A	679	100.0	0.0	\$17,971	2.3	1.2
N/A	Total	679	100.0	9.0	\$17,971	2.3	1.2
Total	00-19	639	8.4	0.0	\$4,339	2.5	1.4
Total	20-24	609	8.0	0.0	\$15,264	2.9	1.6
Total	25-34	1,290	17.0	0.0	\$31,550	3.3	1.4
Total	35-44	1,422	18.8	0.0	\$43,816	3.5	1.3
Total	45-54	1,286	17.0	0.0	\$44,182	3.6	1.3
Total	55-64	1,245	16.4	0.0	\$47,030	3.6	1.2
Total	65-Up	400	5.3	0.0	\$21,796	3.3	1.1
Total	N/A	681	9.0	0.0	\$17,925	2.3	1.2
Total	Total	7,572	100.0	100.0	\$33,197	3.2	1.3

Note: Persons worked at any time during the year.

County Determination: Based on county of employment in which the person made the most money in the year.

N/A: Represents persons with demographic data that is unavailable.

N/A = Nonresidents, individuals for whom demographic data are not available.

Source: Demographics of Persons Working in Wyoming by County, Industry, Age, & Gender, 2000-2017.
Research & Planning, Wyoming Department of Workforce Services.

Prepared by M. Moore, Research & Planning, WY DWS, 6/12/18.

Average Earnings by Age and Gender with Place of Work in Lincoln County in 2016

Gender	Age Group	Number	Age Percent	Gender Percent	Average Annual Wage	Average Quarters Worked	Average Annual Employers
Women	00-19	354	10.9	0.0	\$4,500	2.6	1.4
Women	20-24	281	8.7	0.0	\$11,204	2.9	1.7
Women	25-34	541	16.7	0.0	\$21,096	3.3	1.4
Women	35-44	637	19.6	0.0	\$26,434	3.5	1.3
Women	45-54	634	19.5	0.0	\$30,006	3.6	1.2
Women	55-64	612	18.9	0.0	\$29,037	3.6	1.2
Women	65-Up	187	5.8	0.0	\$16,253	3.2	1.1
Women	Total	3,246	100.0	41.1	\$22,436	3.3	1.3
Men	00-19	308	8.2	0.0	\$4,614	2.4	1.3
Men	20-24	301	8.0	0.0	\$19,263	2.9	1.5
Men	25-34	746	19.9	0.0	\$41,327	3.3	1.3
Men	35-44	791	21.1	0.0	\$57,757	3.5	1.2
Men	45-54	693	18.5	0.0	\$57,547	3.5	1.2
Men	55-64	663	17.7	0.0	\$63,110	3.5	1.2
Men	65-Up	246	6.6	0.0	\$27,718	3.1	1.1
Men	N/A	2	0.1	0.0	\$8,807	4.0	1.0
Men	Total	3,750	100.0	47.4	\$45,945	3.3	1.2
N/A	N/A	909	100.0	0.0	\$16,461	2.0	1.1
N/A	Total	909	100.0	11.5	\$16,461	2.0	1.1
Total	00-19	662	8.4	0.0	\$4,553	2.5	1.4
Total	20-24	582	7.4	0.0	\$15,372	2.9	1.6
Total	25-34	1,287	16.3	0.0	\$32,823	3.3	1.3
Total	35-44	1,428	18.1	0.0	\$43,784	3.5	1.2
Total	45-54	1,327	16.8	0.0	\$44,389	3.5	1.2
Total	55-64	1,275	16.1	0.0	\$46,755	3.5	1.2
Total	65-Up	433	5.5	0.0	\$22,767	3.1	1.1
Total	N/A	911	11.5	0.0	\$16,445	2.0	1.1
Total	Total	7,905	100.0	100.0	\$32,901	3.2	1.2

Note: Persons worked at any time during the year.

County Determination: Based on county of employment in which the person made the most money in the year.

N/A: Represents persons with demographic data that is unavailable.

N/A = Nonresidents, individuals for whom demographic data are not available.

Source: Demographics of Persons Working in Wyoming by County, Industry, Age, & Gender, 2000-2017.

Research & Planning, Wyoming Department of Workforce Services.

Prepared by M. Moore, Research & Planning, WY DWS, 6/12/18.

Average Earnings by Age and Gender with Place of Work in Lincoln County in 2017

Gender	Age Group	Number	Age Percent	Gender Percent	Average Annual Wage	Average Quarters Worked	Average Annual Employers
Women	00-19	323	9.9	0.0	\$4,180	2.5	1.4
Women	20-24	293	9.0	0.0	\$12,195	3.0	1.6
Women	25-34	567	17.4	0.0	\$22,058	3.3	1.4
Women	35-44	648	19.8	0.0	\$26,286	3.5	1.3
Women	45-54	613	18.8	0.0	\$33,897	3.6	1.3
Women	55-64	603	18.5	0.0	\$29,078	3.6	1.2
Women	65-Up	220	6.7	0.0	\$17,435	3.3	1.1
Women	Total	3,267	100.0	40.9	\$23,450	3.4	1.3
Men	00-19	313	8.4	0.0	\$5,131	2.4	1.3
Men	20-24	296	8.0	0.0	\$19,529	3.0	1.6
Men	25-34	701	18.9	0.0	\$42,523	3.4	1.3
Men	35-44	787	21.2	0.0	\$59,037	3.5	1.2
Men	45-54	663	17.9	0.0	\$61,858	3.6	1.2
Men	55-64	696	18.8	0.0	\$62,255	3.5	1.2
Men	65-Up	250	6.7	0.0	\$31,550	3.2	1.2
Men	N/A	2	0.1	0.0	\$5,374	3.5	1.0
Men	Total	3,708	100.0	46.4	\$47,437	3.3	1.3
N/A	N/A	1,008	100.0	0.0	\$17,773	2.1	1.1
N/A	Total	1,008	100.0	12.6	\$17,773	2.1	1.1
Total	00-19	636	8.0	0.0	\$4,648	2.5	1.4
Total	20-24	589	7.4	0.0	\$15,881	3.0	1.6
Total	25-34	1,268	15.9	0.0	\$33,372	3.4	1.4
Total	35-44	1,435	18.0	0.0	\$44,247	3.5	1.3
Total	45-54	1,276	16.0	0.0	\$48,425	3.6	1.2
Total	55-64	1,299	16.3	0.0	\$46,854	3.6	1.2
Total	65-Up	470	5.9	0.0	\$24,943	3.2	1.1
Total	N/A	1,010	12.7	0.0	\$17,749	2.2	1.1
Total	Total	7,983	100.0	100.0	\$33,875	3.2	1.3

Note: Persons worked at any time during the year.

County Determination: Based on county of employment in which the person made the most money in the year.

N/A: Represents persons with demographic data that is unavailable.

N/A = Nonresidents, individuals for whom demographic data are not available.

Source: Demographics of Persons Working in Wyoming by County, Industry, Age, & Gender, 2000-2017.

Research & Planning, Wyoming Department of Workforce Services.

Prepared by M. Moore, Research & Planning, WY DWS, 6/12/18.