

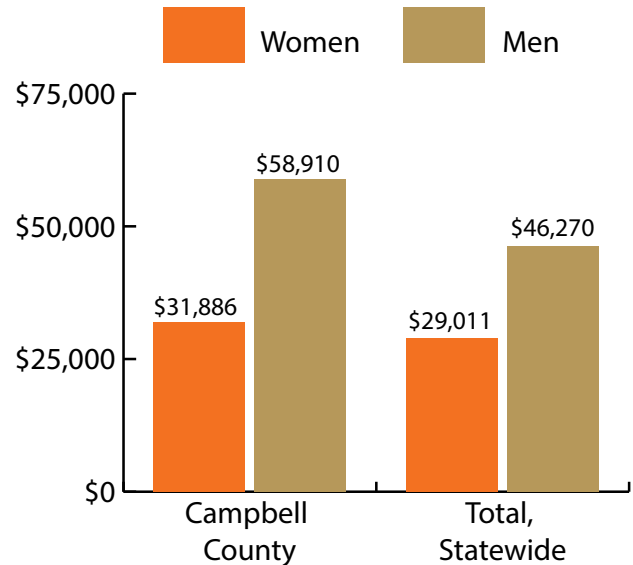
Campbell County at a Glance, 2017

Demographics of Persons Working in Wyoming by County, Industry, Age, & Gender, 2000-2017

Table: Total Number of Persons Working in Campbell County, WY, at Any Time by Gender and Age, 2016-2017

Gender	2016	2017	Change	
			N	%
Women	12,139	11,572	-567	-4.7
Men	17,371	16,152	-1,219	-7.0
Nonresidents	1,854	2,129	275	14.8
Total	31,364	29,853	-1,511	-4.8

Age	2016	2017	Change	
			N	%
00-19	1,689	1,747	58	3.4
20-24	2,818	2,522	-296	-10.5
25-34	7,265	6,649	-616	-8.5
35-44	6,381	6,195	-186	-2.9
45-54	5,184	4,672	-512	-9.9
55-64	5,057	4,826	-231	-4.6
65-Up	1,114	1,110	-4	-0.4
Nonresidents	1,856	2,132	276	14.9
Total	31,364	29,853	-1,511	-4.8



Women's Wages as % of Men's Wages

Campbell County: 54.1%

Total: 62.7%

Figure: Average Annual Wages by Gender, 2017

Total = 29,853

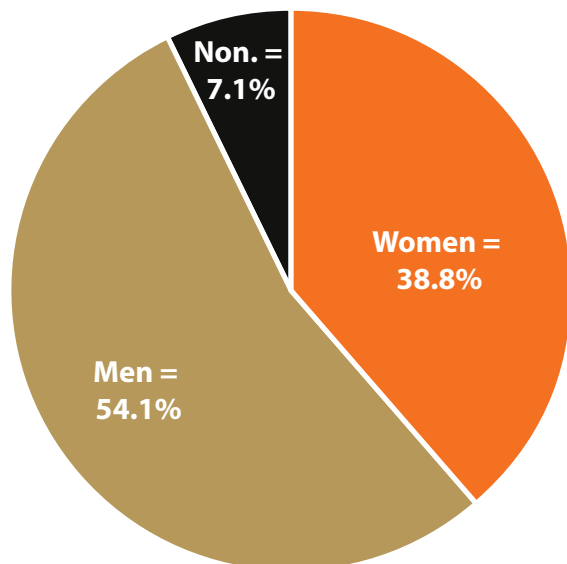


Figure: Persons Working by Gender, 2017

Total = 29,853

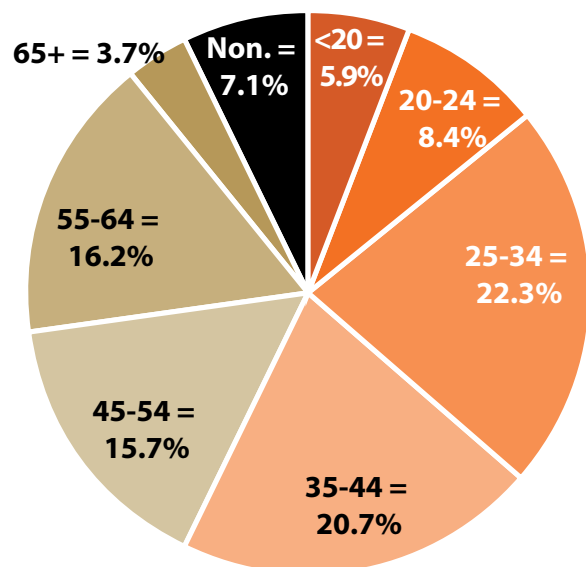


Figure: Persons Working by Age, 2017

Note: Nonresidents are individuals for whom demographic data are not available.

Source: Demographics of Persons Working in Wyoming by County, Industry, Age, & Gender, 2000-2017. Research & Planning, Wyoming Department of Workforce Services. Prepared by M. Moore, Research & Planning, WY DWS, 6/12/18.

Persons Working in Campbell County by Gender and Age, 2000-2017

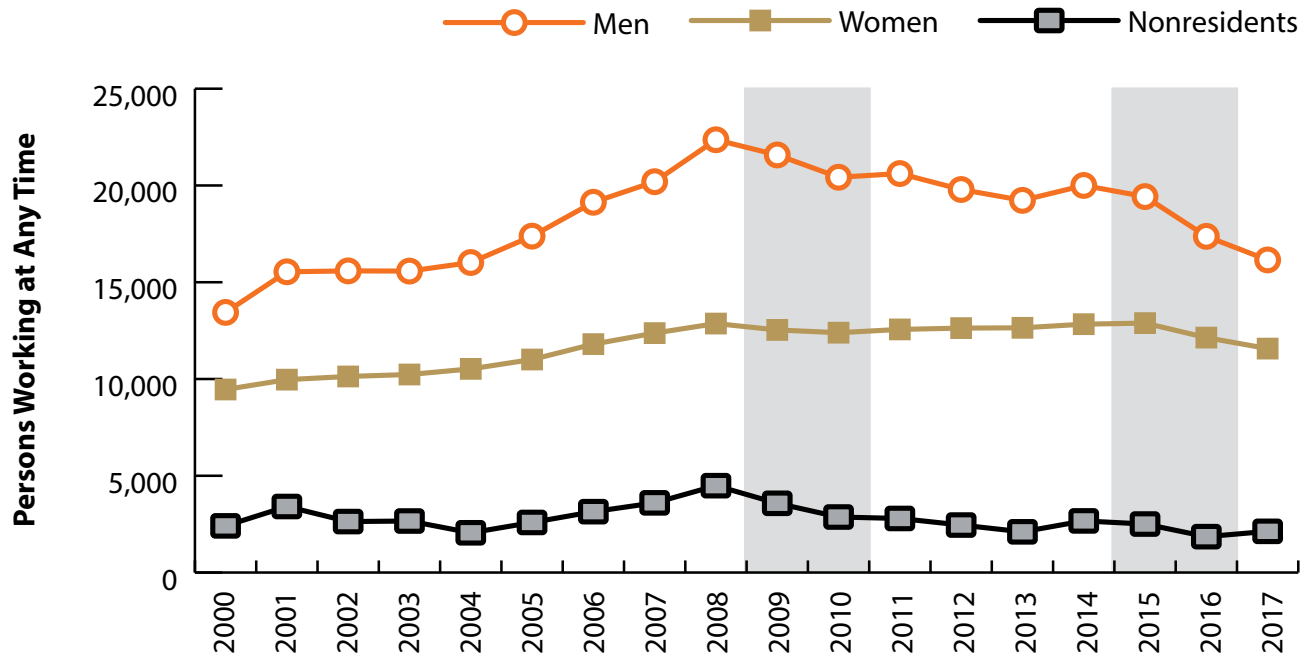


Figure: Persons Working in Campbell County at Any Time by Gender, 2000-2017

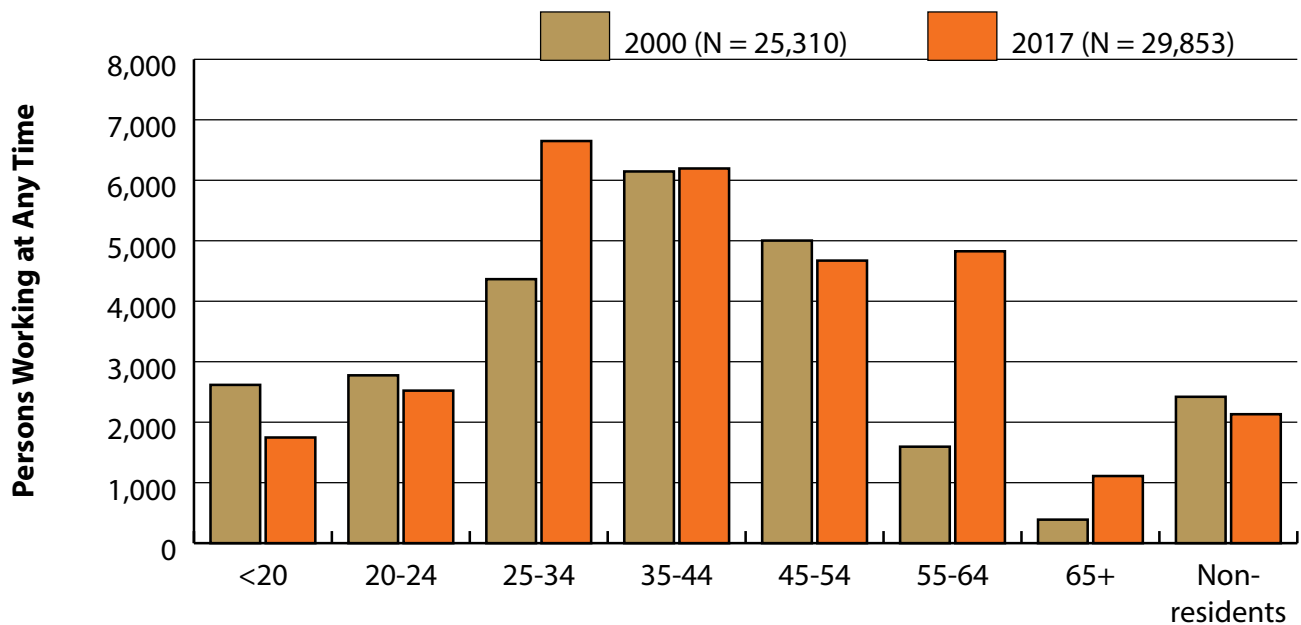


Figure: Persons Working in Campbell County at Any Time by Age, 2000-2017

Note: Nonresidents are individuals for whom demographic data are not available.
 Shaded areas indicate periods of economic downturn: 2009Q1-2010Q1 and 2015Q2-2016Q4.
 Source: Demographics of Persons Working in Wyoming by County, Industry, Age, & Gender, 2000-2017. Research & Planning, Wyoming Department of Workforce Services. Prepared by M. Moore, Research & Planning, WY DWS, 6/12/18.

Wages for Persons Working in Campbell County by Gender, 2000-2017

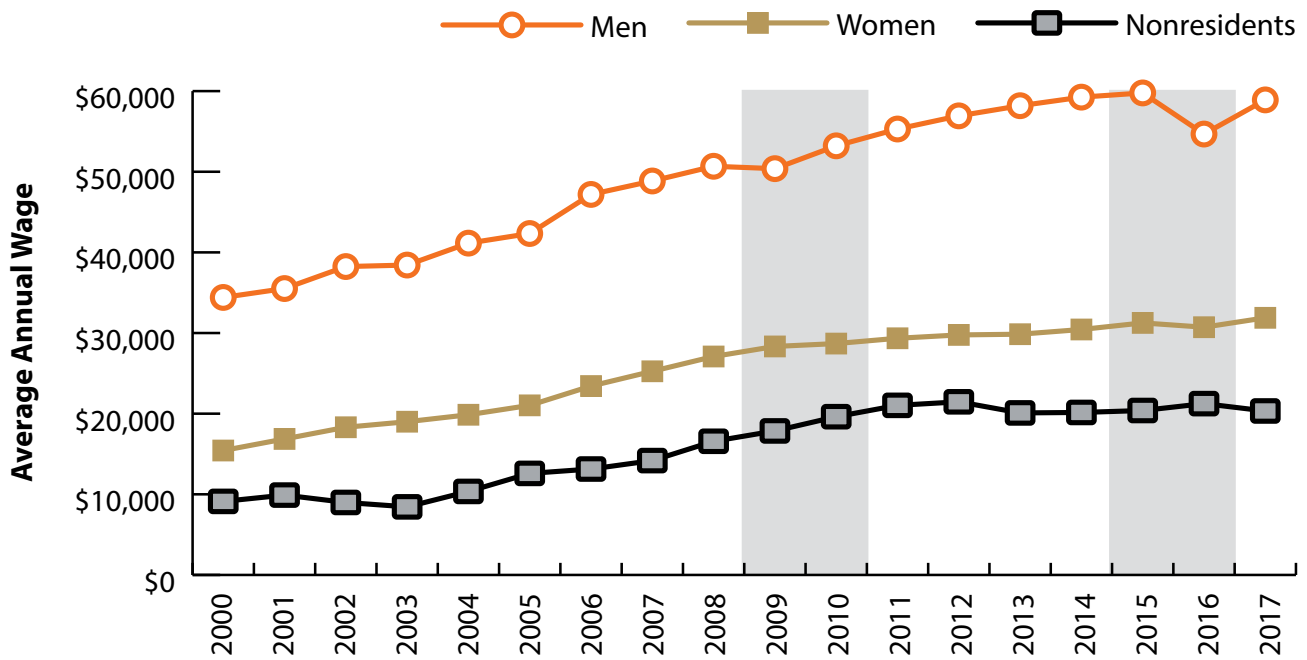


Figure: Average Annual Wage for Persons Working in Campbell County at Any Time by Age, 2000-2017

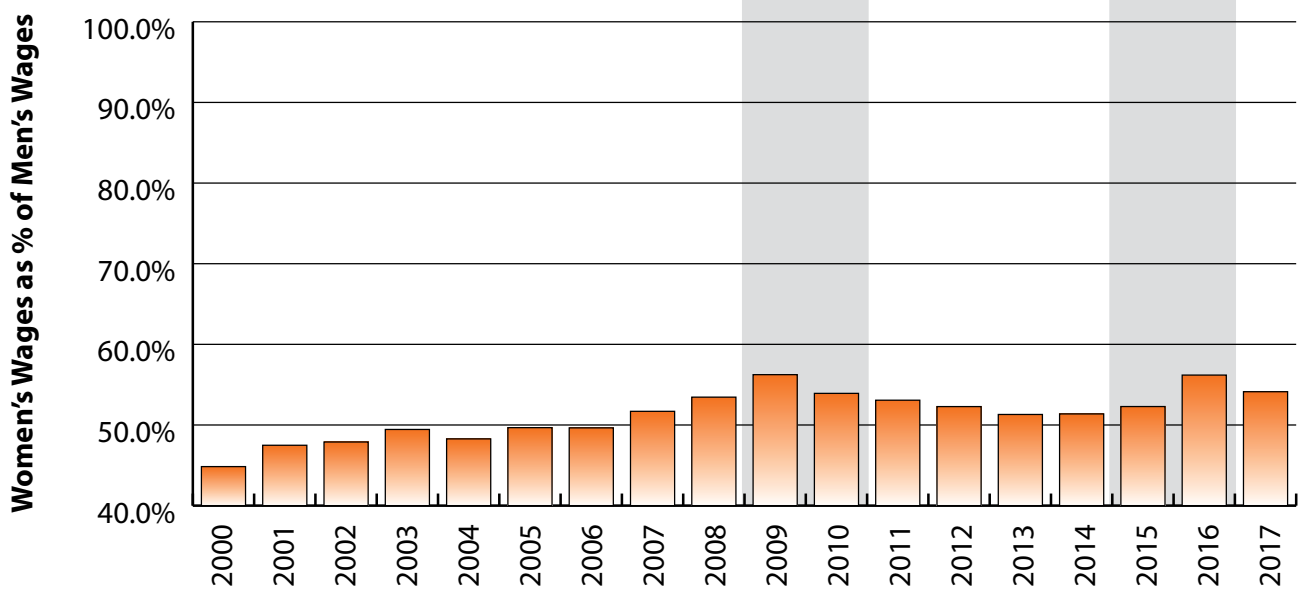


Figure: Women's Average Annual Wages as a Percent of Men's Wages for Persons Working in Campbell County at Any Time by Age, 2000-2017

Note: Nonresidents are individuals for whom demographic data are not available.
 Shaded areas indicate periods of economic downturn: 2009Q1-2010Q1 and 2015Q2-2016Q4.
 Source: Demographics of Persons Working in Wyoming by County, Industry, Age, & Gender, 2000-2017. Research & Planning, Wyoming Department of Workforce Services. Prepared by M. Moore, Research & Planning, WY DWS, 6/12/18.

Average Earnings by Age and Gender with Place of Work in Campbell County in 2000

Gender	Age Group	Number	Age Percent	Gender Percent	Average Annual Wage	Average Quarters Worked	Average Annual Employers
Women	00-19	1,244	13.2	0.0	\$3,570	2.7	1.8
Women	20-24	1,150	12.2	0.0	\$8,107	2.9	1.9
Women	25-34	1,758	18.6	0.0	\$14,091	3.2	1.6
Women	35-44	2,629	27.8	0.0	\$19,444	3.5	1.4
Women	45-54	1,949	20.6	0.0	\$22,540	3.6	1.4
Women	55-64	583	6.2	0.0	\$18,113	3.4	1.3
Women	65-Up	143	1.5	0.0	\$12,603	3.0	1.1
Women	N/A	2	0.0	0.0	\$1,204	1.0	1.0
Women	Total	9,458	100.0	37.4	\$15,431	3.3	1.5
Men	00-19	1,373	10.2	0.0	\$4,689	2.6	1.8
Men	20-24	1,625	12.1	0.0	\$18,959	3.2	2.1
Men	25-34	2,607	19.4	0.0	\$30,842	3.4	1.7
Men	35-44	3,517	26.2	0.0	\$42,751	3.6	1.4
Men	45-54	3,054	22.7	0.0	\$49,131	3.6	1.3
Men	55-64	1,012	7.5	0.0	\$39,801	3.4	1.2
Men	65-Up	246	1.8	0.0	\$16,790	3.1	1.2
Men	N/A	7	0.1	0.0	\$12,334	1.6	1.0
Men	Total	13,441	100.0	53.1	\$34,413	3.4	1.5
N/A	N/A	2,411	100.0	0.0	\$9,121	1.6	1.2
N/A	Total	2,411	100.0	9.5	\$9,121	1.6	1.2
Total	00-19	2,617	10.3	0.0	\$4,157	2.7	1.8
Total	20-24	2,775	11.0	0.0	\$14,461	3.1	2.0
Total	25-34	4,365	17.2	0.0	\$24,096	3.3	1.7
Total	35-44	6,146	24.3	0.0	\$32,781	3.6	1.4
Total	45-54	5,003	19.8	0.0	\$38,772	3.6	1.3
Total	55-64	1,595	6.3	0.0	\$31,874	3.4	1.2
Total	65-Up	389	1.5	0.0	\$15,251	3.1	1.2
Total	N/A	2,420	9.6	0.0	\$9,124	1.6	1.2
Total	Total	25,310	100.0	100.0	\$24,911	3.2	1.5

Note: Persons worked at any time during the year.

County Determination: Based on county of employment in which the person made the most money in the year.

N/A: Represents persons with demographic data that is unavailable.

N/A = Nonresidents, individuals for whom demographic data are not available.

Source: Demographics of Persons Working in Wyoming by County, Industry, Age, & Gender, 2000-2017.
Research & Planning, Wyoming Department of Workforce Services.

Prepared by M. Moore, Research & Planning, WY DWS, 6/12/18.

Average Earnings by Age and Gender with Place of Work in Campbell County in 2001

Gender	Age Group	Number	Age Percent	Gender Percent	Average Annual Wage	Average Quarters Worked	Average Annual Employers
Women	00-19	1,290	12.9	0.0	\$3,934	2.7	1.8
Women	20-24	1,277	12.8	0.0	\$9,082	2.9	2.0
Women	25-34	1,825	18.3	0.0	\$15,452	3.2	1.6
Women	35-44	2,623	26.3	0.0	\$20,839	3.4	1.5
Women	45-54	2,130	21.4	0.0	\$24,490	3.6	1.3
Women	55-64	664	6.7	0.0	\$19,883	3.4	1.3
Women	65-Up	154	1.5	0.0	\$20,441	2.9	1.2
Women	N/A	4	0.0	0.0	\$11,371	1.3	1.0
Women	Total	9,967	100.0	34.5	\$16,865	3.3	1.6
Men	00-19	1,590	10.2	0.0	\$5,958	2.6	1.9
Men	20-24	1,976	12.7	0.0	\$19,514	3.0	2.0
Men	25-34	3,194	20.6	0.0	\$32,658	3.3	1.7
Men	35-44	3,791	24.4	0.0	\$43,500	3.4	1.5
Men	45-54	3,513	22.6	0.0	\$51,089	3.6	1.3
Men	55-64	1,191	7.7	0.0	\$41,414	3.4	1.3
Men	65-Up	276	1.8	0.0	\$20,414	3.2	1.3
Men	N/A	9	0.1	0.0	\$24,092	2.1	1.1
Men	Total	15,540	100.0	53.7	\$35,515	3.3	1.6
N/A	N/A	3,412	100.0	0.0	\$9,904	1.5	1.1
N/A	Total	3,412	100.0	11.8	\$9,904	1.5	1.1
Total	00-19	2,880	10.0	0.0	\$5,051	2.7	1.9
Total	20-24	3,253	11.2	0.0	\$15,419	3.0	2.0
Total	25-34	5,019	17.4	0.0	\$26,401	3.3	1.7
Total	35-44	6,414	22.2	0.0	\$34,233	3.4	1.5
Total	45-54	5,643	19.5	0.0	\$41,049	3.6	1.3
Total	55-64	1,855	6.4	0.0	\$33,707	3.4	1.3
Total	65-Up	430	1.5	0.0	\$20,424	3.1	1.2
Total	N/A	3,425	11.8	0.0	\$9,943	1.5	1.1
Total	Total	28,919	100.0	100.0	\$26,065	3.1	1.5

Note: Persons worked at any time during the year.

County Determination: Based on county of employment in which the person made the most money in the year.

N/A: Represents persons with demographic data that is unavailable.

N/A = Nonresidents, individuals for whom demographic data are not available.

Source: Demographics of Persons Working in Wyoming by County, Industry, Age, & Gender, 2000-2017.

Research & Planning, Wyoming Department of Workforce Services.

Prepared by M. Moore, Research & Planning, WY DWS, 6/12/18.

Average Earnings by Age and Gender with Place of Work in Campbell County in 2002

Gender	Age Group	Number	Age Percent	Gender Percent	Average Annual Wage	Average Quarters Worked	Average Annual Employers
Women	00-19	1,231	12.2	0.0	\$4,076	2.7	1.8
Women	20-24	1,373	13.6	0.0	\$9,990	3.0	1.9
Women	25-34	1,901	18.8	0.0	\$17,511	3.3	1.6
Women	35-44	2,521	24.9	0.0	\$22,411	3.5	1.4
Women	45-54	2,231	22.0	0.0	\$26,444	3.6	1.3
Women	55-64	720	7.1	0.0	\$22,346	3.5	1.3
Women	65-Up	154	1.5	0.0	\$12,602	3.0	1.2
Women	Total	10,131	100.0	35.7	\$18,315	3.3	1.5
Men	00-19	1,442	9.3	0.0	\$5,374	2.7	1.8
Men	20-24	1,963	12.6	0.0	\$19,960	3.1	1.9
Men	25-34	3,317	21.3	0.0	\$35,190	3.4	1.6
Men	35-44	3,590	23.0	0.0	\$46,177	3.5	1.4
Men	45-54	3,629	23.3	0.0	\$54,901	3.6	1.3
Men	55-64	1,336	8.6	0.0	\$45,831	3.5	1.3
Men	65-Up	301	1.9	0.0	\$19,951	3.2	1.2
Men	N/A	8	0.1	0.0	\$18,715	2.1	1.0
Men	Total	15,586	100.0	55.0	\$38,243	3.4	1.5
N/A	N/A	2,634	100.0	0.0	\$8,989	1.6	1.1
N/A	Total	2,634	100.0	9.3	\$8,989	1.6	1.1
Total	00-19	2,673	9.4	0.0	\$4,776	2.7	1.8
Total	20-24	3,336	11.8	0.0	\$15,857	3.0	1.9
Total	25-34	5,218	18.4	0.0	\$28,749	3.4	1.6
Total	35-44	6,111	21.6	0.0	\$36,373	3.5	1.4
Total	45-54	5,860	20.7	0.0	\$44,067	3.6	1.3
Total	55-64	2,056	7.3	0.0	\$37,607	3.5	1.3
Total	65-Up	455	1.6	0.0	\$17,464	3.1	1.2
Total	N/A	2,642	9.3	0.0	\$9,019	1.6	1.1
Total	Total	28,351	100.0	100.0	\$28,404	3.2	1.5

Note: Persons worked at any time during the year.

County Determination: Based on county of employment in which the person made the most money in the year.

N/A: Represents persons with demographic data that is unavailable.

N/A = Nonresidents, individuals for whom demographic data are not available.

Source: Demographics of Persons Working in Wyoming by County, Industry, Age, & Gender, 2000-2017.
Research & Planning, Wyoming Department of Workforce Services.

Prepared by M. Moore, Research & Planning, WY DWS, 6/12/18.

Average Earnings by Age and Gender with Place of Work in Campbell County in 2003

Gender	Age Group	Number	Age Percent	Gender Percent	Average Annual Wage	Average Quarters Worked	Average Annual Employers
Women	00-19	1,190	11.6	0.0	\$3,868	2.7	1.8
Women	20-24	1,352	13.2	0.0	\$10,286	3.0	1.8
Women	25-34	2,013	19.7	0.0	\$18,476	3.3	1.5
Women	35-44	2,400	23.5	0.0	\$22,821	3.5	1.4
Women	45-54	2,331	22.8	0.0	\$27,225	3.6	1.3
Women	55-64	790	7.7	0.0	\$23,180	3.5	1.2
Women	65-Up	157	1.5	0.0	\$14,018	3.2	1.1
Women	Total	10,233	100.0	35.9	\$19,002	3.3	1.5
Men	00-19	1,351	8.7	0.0	\$5,387	2.6	1.8
Men	20-24	1,920	12.3	0.0	\$19,801	3.1	1.9
Men	25-34	3,346	21.5	0.0	\$35,476	3.4	1.5
Men	35-44	3,420	22.0	0.0	\$45,738	3.5	1.4
Men	45-54	3,759	24.1	0.0	\$54,326	3.6	1.2
Men	55-64	1,467	9.4	0.0	\$45,766	3.5	1.2
Men	65-Up	306	2.0	0.0	\$21,791	3.2	1.2
Men	N/A	7	0.0	0.0	\$18,324	1.6	1.0
Men	Total	15,576	100.0	54.7	\$38,429	3.4	1.4
N/A	N/A	2,662	100.0	0.0	\$8,443	1.5	1.1
N/A	Total	2,662	100.0	9.3	\$8,443	1.5	1.1
Total	00-19	2,541	8.9	0.0	\$4,676	2.7	1.8
Total	20-24	3,272	11.5	0.0	\$15,869	3.1	1.9
Total	25-34	5,359	18.8	0.0	\$29,090	3.3	1.5
Total	35-44	5,820	20.4	0.0	\$36,288	3.5	1.4
Total	45-54	6,090	21.4	0.0	\$43,953	3.6	1.2
Total	55-64	2,257	7.9	0.0	\$37,860	3.5	1.2
Total	65-Up	463	1.6	0.0	\$19,155	3.2	1.2
Total	N/A	2,669	9.4	0.0	\$8,469	1.5	1.1
Total	Total	28,471	100.0	100.0	\$28,643	3.2	1.4

Note: Persons worked at any time during the year.

County Determination: Based on county of employment in which the person made the most money in the year.

N/A: Represents persons with demographic data that is unavailable.

N/A = Nonresidents, individuals for whom demographic data are not available.

Source: Demographics of Persons Working in Wyoming by County, Industry, Age, & Gender, 2000-2017.
Research & Planning, Wyoming Department of Workforce Services.

Prepared by M. Moore, Research & Planning, WY DWS, 6/12/18.

Average Earnings by Age and Gender with Place of Work in Campbell County in 2004

Gender	Age Group	Number	Age Percent	Gender Percent	Average Annual Wage	Average Quarters Worked	Average Annual Employers
Women	00-19	1,192	11.3	0.0	\$4,000	2.7	1.8
Women	20-24	1,403	13.3	0.0	\$10,652	3.1	1.8
Women	25-34	2,125	20.2	0.0	\$18,969	3.3	1.6
Women	35-44	2,337	22.2	0.0	\$23,827	3.5	1.4
Women	45-54	2,415	22.9	0.0	\$28,710	3.6	1.3
Women	55-64	883	8.4	0.0	\$24,565	3.6	1.2
Women	65-Up	167	1.6	0.0	\$13,719	3.2	1.2
Women	N/A	1	0.0	0.0	\$2,651	1.0	1.0
Women	Total	10,523	100.0	36.8	\$19,864	3.4	1.5
Men	00-19	1,371	8.6	0.0	\$5,987	2.6	1.8
Men	20-24	1,970	12.3	0.0	\$21,506	3.1	1.9
Men	25-34	3,459	21.6	0.0	\$38,385	3.4	1.6
Men	35-44	3,394	21.2	0.0	\$47,462	3.5	1.4
Men	45-54	3,889	24.3	0.0	\$57,079	3.6	1.3
Men	55-64	1,608	10.0	0.0	\$52,514	3.6	1.2
Men	65-Up	326	2.0	0.0	\$25,136	3.3	1.2
Men	N/A	2	0.0	0.0	\$42,681	3.0	1.0
Men	Total	16,019	100.0	56.0	\$41,147	3.4	1.5
N/A	N/A	2,054	100.0	0.0	\$10,357	1.7	1.1
N/A	Total	2,054	100.0	7.2	\$10,357	1.7	1.1
Total	00-19	2,563	9.0	0.0	\$5,063	2.7	1.8
Total	20-24	3,373	11.8	0.0	\$16,991	3.1	1.9
Total	25-34	5,584	19.5	0.0	\$30,996	3.4	1.6
Total	35-44	5,731	20.0	0.0	\$37,824	3.5	1.4
Total	45-54	6,304	22.0	0.0	\$46,211	3.6	1.3
Total	55-64	2,491	8.7	0.0	\$42,607	3.6	1.2
Total	65-Up	493	1.7	0.0	\$21,269	3.3	1.2
Total	N/A	2,057	7.2	0.0	\$10,384	1.7	1.1
Total	Total	28,596	100.0	100.0	\$31,103	3.3	1.5

Note: Persons worked at any time during the year.

County Determination: Based on county of employment in which the person made the most money in the year.

N/A: Represents persons with demographic data that is unavailable.

N/A = Nonresidents, individuals for whom demographic data are not available.

Source: Demographics of Persons Working in Wyoming by County, Industry, Age, & Gender, 2000-2017.

Research & Planning, Wyoming Department of Workforce Services.

Prepared by M. Moore, Research & Planning, WY DWS, 6/12/18.

Average Earnings by Age and Gender with Place of Work in Campbell County in 2005

Gender	Age Group	Number	Age Percent	Gender Percent	Average Annual Wage	Average Quarters Worked	Average Annual Employers
Women	00-19	1,190	10.8	0.0	\$4,418	2.8	1.9
Women	20-24	1,462	13.3	0.0	\$11,328	3.1	1.9
Women	25-34	2,292	20.8	0.0	\$19,833	3.3	1.6
Women	35-44	2,304	20.9	0.0	\$25,179	3.5	1.5
Women	45-54	2,572	23.4	0.0	\$29,802	3.6	1.3
Women	55-64	1,013	9.2	0.0	\$26,963	3.6	1.2
Women	65-Up	173	1.6	0.0	\$12,869	3.1	1.1
Women	N/A	1	0.0	0.0	\$13,200	1.0	1.0
Women	Total	11,007	100.0	35.5	\$21,031	3.4	1.5
Men	00-19	1,370	7.9	0.0	\$6,707	2.7	1.8
Men	20-24	2,204	12.7	0.0	\$22,387	3.1	1.9
Men	25-34	3,895	22.4	0.0	\$39,914	3.4	1.5
Men	35-44	3,510	20.2	0.0	\$48,271	3.4	1.4
Men	45-54	4,210	24.2	0.0	\$58,093	3.6	1.3
Men	55-64	1,813	10.4	0.0	\$53,558	3.6	1.2
Men	65-Up	377	2.2	0.0	\$28,706	3.3	1.2
Men	N/A	3	0.0	0.0	\$19,104	1.7	1.3
Men	Total	17,382	100.0	56.1	\$42,341	3.4	1.5
N/A	N/A	2,588	100.0	0.0	\$12,593	1.7	1.2
N/A	Total	2,588	100.0	8.4	\$12,593	1.7	1.2
Total	00-19	2,560	8.3	0.0	\$5,643	2.8	1.9
Total	20-24	3,666	11.8	0.0	\$17,977	3.1	1.9
Total	25-34	6,187	20.0	0.0	\$32,475	3.4	1.5
Total	35-44	5,814	18.8	0.0	\$39,120	3.5	1.5
Total	45-54	6,782	21.9	0.0	\$47,364	3.6	1.3
Total	55-64	2,826	9.1	0.0	\$44,025	3.6	1.2
Total	65-Up	550	1.8	0.0	\$23,724	3.2	1.2
Total	N/A	2,592	8.4	0.0	\$12,600	1.7	1.2
Total	Total	30,977	100.0	100.0	\$32,284	3.2	1.5

Note: Persons worked at any time during the year.

County Determination: Based on county of employment in which the person made the most money in the year.

N/A: Represents persons with demographic data that is unavailable.

N/A = Nonresidents, individuals for whom demographic data are not available.

Source: Demographics of Persons Working in Wyoming by County, Industry, Age, & Gender, 2000-2017.

Research & Planning, Wyoming Department of Workforce Services.

Prepared by M. Moore, Research & Planning, WY DWS, 6/12/18.

Average Earnings by Age and Gender with Place of Work in Campbell County in 2006

Gender	Age Group	Number	Age Percent	Gender Percent	Average Annual Wage	Average Quarters Worked	Average Annual Employers
Women	00-19	1,317	11.2	0.0	\$4,912	2.8	2.0
Women	20-24	1,576	13.4	0.0	\$13,502	3.1	1.9
Women	25-34	2,476	21.0	0.0	\$22,121	3.3	1.6
Women	35-44	2,377	20.1	0.0	\$27,801	3.5	1.5
Women	45-54	2,757	23.4	0.0	\$32,982	3.6	1.4
Women	55-64	1,105	9.4	0.0	\$30,826	3.6	1.2
Women	65-Up	192	1.6	0.0	\$14,814	3.1	1.1
Women	N/A	2	0.0	0.0	\$19,048	2.5	1.0
Women	Total	11,802	100.0	34.6	\$23,426	3.4	1.6
Men	00-19	1,494	7.8	0.0	\$8,059	2.7	1.9
Men	20-24	2,474	12.9	0.0	\$27,164	3.1	1.8
Men	25-34	4,389	22.9	0.0	\$44,628	3.4	1.6
Men	35-44	3,754	19.6	0.0	\$53,984	3.5	1.4
Men	45-54	4,512	23.6	0.0	\$62,687	3.6	1.3
Men	55-64	2,076	10.9	0.0	\$61,532	3.6	1.2
Men	65-Up	428	2.2	0.0	\$33,629	3.3	1.2
Men	N/A	5	0.0	0.0	\$9,082	1.6	1.0
Men	Total	19,132	100.0	56.1	\$47,188	3.4	1.5
N/A	N/A	3,145	100.0	0.0	\$13,136	1.8	1.2
N/A	Total	3,145	100.0	9.2	\$13,136	1.8	1.2
Total	00-19	2,811	8.2	0.0	\$6,585	2.8	1.9
Total	20-24	4,050	11.9	0.0	\$21,847	3.1	1.9
Total	25-34	6,865	20.1	0.0	\$36,510	3.4	1.6
Total	35-44	6,131	18.0	0.0	\$43,833	3.5	1.5
Total	45-54	7,269	21.3	0.0	\$51,420	3.6	1.3
Total	55-64	3,181	9.3	0.0	\$50,866	3.6	1.2
Total	65-Up	620	1.8	0.0	\$27,803	3.2	1.2
Total	N/A	3,152	9.2	0.0	\$13,133	1.8	1.2
Total	Total	34,079	100.0	100.0	\$35,816	3.2	1.5

Note: Persons worked at any time during the year.

County Determination: Based on county of employment in which the person made the most money in the year.

N/A: Represents persons with demographic data that is unavailable.

N/A = Nonresidents, individuals for whom demographic data are not available.

Source: Demographics of Persons Working in Wyoming by County, Industry, Age, & Gender, 2000-2017.
Research & Planning, Wyoming Department of Workforce Services.

Prepared by M. Moore, Research & Planning, WY DWS, 6/12/18.

Average Earnings by Age and Gender with Place of Work in Campbell County in 2007

Gender	Age Group	Number	Age Percent	Gender Percent	Average Annual Wage	Average Quarters Worked	Average Annual Employers
Women	00-19	1,305	10.5	0.0	\$5,454	2.9	1.9
Women	20-24	1,651	13.3	0.0	\$14,900	3.1	1.9
Women	25-34	2,704	21.9	0.0	\$23,898	3.3	1.6
Women	35-44	2,332	18.8	0.0	\$29,947	3.5	1.5
Women	45-54	2,891	23.4	0.0	\$34,729	3.6	1.3
Women	55-64	1,241	10.0	0.0	\$33,324	3.6	1.2
Women	65-Up	242	2.0	0.0	\$18,387	3.2	1.1
Women	N/A	6	0.0	0.0	\$13,031	2.3	1.3
Women	Total	12,372	100.0	34.2	\$25,255	3.4	1.5
Men	00-19	1,482	7.3	0.0	\$8,116	2.7	1.9
Men	20-24	2,638	13.1	0.0	\$28,665	3.1	1.8
Men	25-34	4,763	23.6	0.0	\$47,122	3.4	1.5
Men	35-44	3,850	19.1	0.0	\$54,631	3.5	1.4
Men	45-54	4,644	23.0	0.0	\$63,920	3.6	1.3
Men	55-64	2,326	11.5	0.0	\$65,196	3.6	1.2
Men	65-Up	482	2.4	0.0	\$32,149	3.3	1.2
Men	N/A	9	0.0	0.0	\$17,951	1.8	1.2
Men	Total	20,194	100.0	55.8	\$48,854	3.4	1.5
N/A	N/A	3,601	100.0	0.0	\$14,181	1.8	1.2
N/A	Total	3,601	100.0	10.0	\$14,181	1.8	1.2
Total	00-19	2,787	7.7	0.0	\$6,870	2.8	1.9
Total	20-24	4,289	11.9	0.0	\$23,366	3.1	1.8
Total	25-34	7,467	20.6	0.0	\$38,712	3.4	1.5
Total	35-44	6,182	17.1	0.0	\$45,320	3.5	1.4
Total	45-54	7,535	20.8	0.0	\$52,720	3.6	1.3
Total	55-64	3,567	9.9	0.0	\$54,107	3.6	1.2
Total	65-Up	724	2.0	0.0	\$27,549	3.3	1.2
Total	N/A	3,616	10.0	0.0	\$14,189	1.8	1.2
Total	Total	36,167	100.0	100.0	\$37,329	3.2	1.5

Note: Persons worked at any time during the year.

County Determination: Based on county of employment in which the person made the most money in the year.

N/A: Represents persons with demographic data that is unavailable.

N/A = Nonresidents, individuals for whom demographic data are not available.

Source: Demographics of Persons Working in Wyoming by County, Industry, Age, & Gender, 2000-2017.

Research & Planning, Wyoming Department of Workforce Services.

Prepared by M. Moore, Research & Planning, WY DWS, 6/12/18.

Average Earnings by Age and Gender with Place of Work in Campbell County in 2008

Gender	Age Group	Number	Age Percent	Gender Percent	Average Annual Wage	Average Quarters Worked	Average Annual Employers
Women	00-19	1,241	9.6	0.0	\$5,549	2.8	1.7
Women	20-24	1,701	13.2	0.0	\$16,085	3.1	1.8
Women	25-34	2,902	22.6	0.0	\$25,977	3.3	1.5
Women	35-44	2,376	18.5	0.0	\$31,337	3.5	1.4
Women	45-54	3,000	23.3	0.0	\$36,784	3.6	1.3
Women	55-64	1,374	10.7	0.0	\$35,433	3.6	1.2
Women	65-Up	270	2.1	0.0	\$19,722	3.2	1.2
Women	N/A	1	0.0	0.0	\$60,282	4.0	1.0
Women	Total	12,865	100.0	32.4	\$27,090	3.4	1.5
Men	00-19	1,485	6.6	0.0	\$8,947	2.7	1.8
Men	20-24	2,994	13.4	0.0	\$30,934	3.1	1.7
Men	25-34	5,447	24.4	0.0	\$49,226	3.3	1.5
Men	35-44	4,257	19.0	0.0	\$56,117	3.4	1.4
Men	45-54	5,022	22.5	0.0	\$64,183	3.5	1.3
Men	55-64	2,631	11.8	0.0	\$68,441	3.6	1.2
Men	65-Up	518	2.3	0.0	\$34,032	3.4	1.2
Men	N/A	7	0.0	0.0	\$39,036	2.3	1.1
Men	Total	22,361	100.0	56.3	\$50,679	3.3	1.4
N/A	N/A	4,488	100.0	0.0	\$16,576	1.9	1.2
N/A	Total	4,488	100.0	11.3	\$16,576	1.9	1.2
Total	00-19	2,726	6.9	0.0	\$7,400	2.7	1.8
Total	20-24	4,695	11.8	0.0	\$25,554	3.1	1.7
Total	25-34	8,349	21.0	0.0	\$41,145	3.3	1.5
Total	35-44	6,633	16.7	0.0	\$47,240	3.4	1.4
Total	45-54	8,022	20.2	0.0	\$53,936	3.5	1.3
Total	55-64	4,005	10.1	0.0	\$57,117	3.6	1.2
Total	65-Up	788	2.0	0.0	\$29,129	3.3	1.2
Total	N/A	4,496	11.3	0.0	\$16,621	1.9	1.2
Total	Total	39,714	100.0	100.0	\$39,183	3.2	1.4

Note: Persons worked at any time during the year.

County Determination: Based on county of employment in which the person made the most money in the year.

N/A: Represents persons with demographic data that is unavailable.

N/A = Nonresidents, individuals for whom demographic data are not available.

Source: Demographics of Persons Working in Wyoming by County, Industry, Age, & Gender, 2000-2017.

Research & Planning, Wyoming Department of Workforce Services.

Prepared by M. Moore, Research & Planning, WY DWS, 6/12/18.

Average Earnings by Age and Gender with Place of Work in Campbell County in 2009

Gender	Age Group	Number	Age Percent	Gender Percent	Average Annual Wage	Average Quarters Worked	Average Annual Employers
Women	00-19	962	7.7	0.0	\$5,558	2.8	1.4
Women	20-24	1,601	12.8	0.0	\$14,866	3.1	1.5
Women	25-34	2,987	23.8	0.0	\$26,777	3.4	1.4
Women	35-44	2,338	18.7	0.0	\$32,210	3.5	1.3
Women	45-54	2,909	23.2	0.0	\$38,254	3.7	1.2
Women	55-64	1,466	11.7	0.0	\$36,803	3.6	1.2
Women	65-Up	269	2.1	0.0	\$20,201	3.3	1.1
Women	N/A	2	0.0	0.0	\$31,140	2.5	1.0
Women	Total	12,534	100.0	33.3	\$28,336	3.4	1.3
Men	00-19	1,133	5.3	0.0	\$7,419	2.7	1.4
Men	20-24	2,622	12.2	0.0	\$29,352	3.1	1.5
Men	25-34	5,443	25.2	0.0	\$47,408	3.4	1.3
Men	35-44	4,170	19.3	0.0	\$55,293	3.4	1.3
Men	45-54	4,866	22.6	0.0	\$63,160	3.5	1.2
Men	55-64	2,817	13.1	0.0	\$66,695	3.6	1.2
Men	65-Up	524	2.4	0.0	\$34,087	3.2	1.1
Men	N/A	2	0.0	0.0	\$31,796	2.5	1.0
Men	Total	21,577	100.0	57.3	\$50,383	3.4	1.3
N/A	N/A	3,578	100.0	0.0	\$17,859	2.1	1.1
N/A	Total	3,578	100.0	9.5	\$17,859	2.1	1.1
Total	00-19	2,095	5.6	0.0	\$6,564	2.8	1.4
Total	20-24	4,223	11.2	0.0	\$23,860	3.1	1.5
Total	25-34	8,430	22.4	0.0	\$40,098	3.4	1.4
Total	35-44	6,508	17.3	0.0	\$47,000	3.5	1.3
Total	45-54	7,775	20.6	0.0	\$53,841	3.6	1.2
Total	55-64	4,283	11.4	0.0	\$56,463	3.6	1.2
Total	65-Up	793	2.1	0.0	\$29,377	3.3	1.1
Total	N/A	3,582	9.5	0.0	\$17,875	2.1	1.1
Total	Total	37,689	100.0	100.0	\$39,964	3.3	1.3

Note: Persons worked at any time during the year.

County Determination: Based on county of employment in which the person made the most money in the year.

N/A: Represents persons with demographic data that is unavailable.

N/A = Nonresidents, individuals for whom demographic data are not available.

Source: Demographics of Persons Working in Wyoming by County, Industry, Age, & Gender, 2000-2017.
Research & Planning, Wyoming Department of Workforce Services.

Prepared by M. Moore, Research & Planning, WY DWS, 6/12/18.

Average Earnings by Age and Gender with Place of Work in Campbell County in 2010

Gender	Age Group	Number	Age Percent	Gender Percent	Average Annual Wage	Average Quarters Worked	Average Annual Employers
Women	00-19	904	7.3	0.0	\$5,219	2.7	1.5
Women	20-24	1,520	12.3	0.0	\$14,351	3.1	1.6
Women	25-34	2,977	24.0	0.0	\$26,454	3.4	1.4
Women	35-44	2,319	18.7	0.0	\$33,166	3.5	1.3
Women	45-54	2,780	22.4	0.0	\$37,755	3.6	1.3
Women	55-64	1,607	13.0	0.0	\$38,977	3.6	1.2
Women	65-Up	285	2.3	0.0	\$20,116	3.1	1.1
Women	N/A	1	0.0	0.0	\$64,863	4.0	1.0
Women	Total	12,393	100.0	34.7	\$28,693	3.4	1.4
Men	00-19	1,008	4.9	0.0	\$6,671	2.6	1.5
Men	20-24	2,304	11.3	0.0	\$28,468	3.1	1.5
Men	25-34	5,213	25.5	0.0	\$49,843	3.4	1.4
Men	35-44	3,942	19.3	0.0	\$59,701	3.5	1.3
Men	45-54	4,490	22.0	0.0	\$65,231	3.5	1.2
Men	55-64	2,973	14.6	0.0	\$69,718	3.6	1.1
Men	65-Up	493	2.4	0.0	\$38,850	3.3	1.2
Men	N/A	2	0.0	0.0	\$34,339	3.0	1.0
Men	Total	20,425	100.0	57.2	\$53,213	3.4	1.3
N/A	N/A	2,869	100.0	0.0	\$19,624	2.1	1.1
N/A	Total	2,869	100.0	8.0	\$19,624	2.1	1.1
Total	00-19	1,912	5.4	0.0	\$5,985	2.6	1.5
Total	20-24	3,824	10.7	0.0	\$22,857	3.1	1.6
Total	25-34	8,190	22.9	0.0	\$41,341	3.4	1.4
Total	35-44	6,261	17.5	0.0	\$49,873	3.5	1.3
Total	45-54	7,270	20.4	0.0	\$54,724	3.6	1.2
Total	55-64	4,580	12.8	0.0	\$58,932	3.6	1.2
Total	65-Up	778	2.2	0.0	\$31,987	3.2	1.1
Total	N/A	2,872	8.0	0.0	\$19,650	2.1	1.1
Total	Total	35,687	100.0	100.0	\$41,997	3.3	1.3

Note: Persons worked at any time during the year.

County Determination: Based on county of employment in which the person made the most money in the year.

N/A: Represents persons with demographic data that is unavailable.

N/A = Nonresidents, individuals for whom demographic data are not available.

Source: Demographics of Persons Working in Wyoming by County, Industry, Age, & Gender, 2000-2017.
Research & Planning, Wyoming Department of Workforce Services.

Prepared by M. Moore, Research & Planning, WY DWS, 6/12/18.

Average Earnings by Age and Gender with Place of Work in Campbell County in 2011

Gender	Age Group	Number	Age Percent	Gender Percent	Average Annual Wage	Average Quarters Worked	Average Annual Employers
Women	00-19	888	7.1	0.0	\$4,968	2.7	1.6
Women	20-24	1,573	12.5	0.0	\$13,737	3.1	1.7
Women	25-34	3,002	23.9	0.0	\$27,314	3.4	1.4
Women	35-44	2,351	18.7	0.0	\$34,226	3.5	1.3
Women	45-54	2,713	21.6	0.0	\$38,606	3.6	1.3
Women	55-64	1,715	13.7	0.0	\$39,956	3.6	1.2
Women	65-Up	319	2.5	0.0	\$21,535	3.2	1.1
Women	N/A	1	0.0	0.0	\$68,544	4.0	1.0
Women	Total	12,562	100.0	34.9	\$29,349	3.4	1.4
Men	00-19	1,032	5.0	0.0	\$7,648	2.6	1.6
Men	20-24	2,212	10.7	0.0	\$29,254	3.1	1.6
Men	25-34	5,408	26.2	0.0	\$52,252	3.4	1.4
Men	35-44	4,022	19.5	0.0	\$62,172	3.5	1.3
Men	45-54	4,324	21.0	0.0	\$67,942	3.5	1.2
Men	55-64	3,075	14.9	0.0	\$71,734	3.6	1.2
Men	65-Up	538	2.6	0.0	\$37,597	3.2	1.2
Men	N/A	5	0.0	0.0	\$39,641	2.4	1.0
Men	Total	20,616	100.0	57.3	\$55,298	3.4	1.3
N/A	N/A	2,794	100.0	0.0	\$21,031	2.1	1.1
N/A	Total	2,794	100.0	7.8	\$21,031	2.1	1.1
Total	00-19	1,920	5.3	0.0	\$6,408	2.7	1.6
Total	20-24	3,785	10.5	0.0	\$22,805	3.1	1.6
Total	25-34	8,410	23.4	0.0	\$43,350	3.4	1.4
Total	35-44	6,373	17.7	0.0	\$51,863	3.5	1.3
Total	45-54	7,037	19.6	0.0	\$56,632	3.6	1.2
Total	55-64	4,790	13.3	0.0	\$60,357	3.6	1.2
Total	65-Up	857	2.4	0.0	\$31,618	3.2	1.2
Total	N/A	2,800	7.8	0.0	\$21,081	2.1	1.1
Total	Total	35,972	100.0	100.0	\$43,575	3.3	1.3

Note: Persons worked at any time during the year.

County Determination: Based on county of employment in which the person made the most money in the year.

N/A: Represents persons with demographic data that is unavailable.

N/A = Nonresidents, individuals for whom demographic data are not available.

Source: Demographics of Persons Working in Wyoming by County, Industry, Age, & Gender, 2000-2017.

Research & Planning, Wyoming Department of Workforce Services.

Prepared by M. Moore, Research & Planning, WY DWS, 6/12/18.

Average Earnings by Age and Gender with Place of Work in Campbell County in 2012

Gender	Age Group	Number	Age Percent	Gender Percent	Average Annual Wage	Average Quarters Worked	Average Annual Employers
Women	00-19	920	7.3	0.0	\$5,241	2.8	1.5
Women	20-24	1,540	12.2	0.0	\$14,539	3.1	1.7
Women	25-34	3,066	24.3	0.0	\$27,640	3.4	1.4
Women	35-44	2,373	18.8	0.0	\$35,126	3.5	1.3
Women	45-54	2,583	20.5	0.0	\$38,657	3.6	1.3
Women	55-64	1,785	14.1	0.0	\$40,249	3.6	1.2
Women	65-Up	361	2.9	0.0	\$24,516	3.3	1.1
Women	N/A	2	0.0	0.0	\$34,966	2.5	1.0
Women	Total	12,630	100.0	36.2	\$29,765	3.4	1.4
Men	00-19	943	4.8	0.0	\$7,619	2.7	1.5
Men	20-24	2,085	10.5	0.0	\$28,573	3.1	1.6
Men	25-34	5,278	26.7	0.0	\$53,123	3.5	1.3
Men	35-44	3,953	20.0	0.0	\$65,275	3.6	1.3
Men	45-54	3,901	19.7	0.0	\$68,744	3.6	1.2
Men	55-64	3,047	15.4	0.0	\$75,381	3.7	1.1
Men	65-Up	582	2.9	0.0	\$40,584	3.3	1.1
Men	N/A	2	0.0	0.0	\$33,297	2.5	1.0
Men	Total	19,791	100.0	56.7	\$56,931	3.5	1.3
N/A	N/A	2,454	100.0	0.0	\$21,470	2.1	1.1
N/A	Total	2,454	100.0	7.0	\$21,470	2.1	1.1
Total	00-19	1,863	5.3	0.0	\$6,445	2.7	1.5
Total	20-24	3,625	10.4	0.0	\$22,611	3.1	1.6
Total	25-34	8,344	23.9	0.0	\$43,759	3.4	1.4
Total	35-44	6,326	18.1	0.0	\$53,965	3.6	1.3
Total	45-54	6,484	18.6	0.0	\$56,759	3.6	1.2
Total	55-64	4,832	13.9	0.0	\$62,403	3.7	1.1
Total	65-Up	943	2.7	0.0	\$34,433	3.3	1.1
Total	N/A	2,458	7.0	0.0	\$21,491	2.1	1.1
Total	Total	34,875	100.0	100.0	\$44,597	3.4	1.3

Note: Persons worked at any time during the year.

County Determination: Based on county of employment in which the person made the most money in the year.

N/A: Represents persons with demographic data that is unavailable.

N/A = Nonresidents, individuals for whom demographic data are not available.

Source: Demographics of Persons Working in Wyoming by County, Industry, Age, & Gender, 2000-2017.

Research & Planning, Wyoming Department of Workforce Services.

Prepared by M. Moore, Research & Planning, WY DWS, 6/12/18.

Average Earnings by Age and Gender with Place of Work in Campbell County in 2013

Gender	Age Group	Number	Age Percent	Gender Percent	Average Annual Wage	Average Quarters Worked	Average Annual Employers
Women	00-19	953	7.5	0.0	\$5,103	2.7	1.6
Women	20-24	1,486	11.8	0.0	\$14,174	3.1	1.7
Women	25-34	3,055	24.2	0.0	\$27,273	3.4	1.4
Women	35-44	2,463	19.5	0.0	\$35,200	3.5	1.4
Women	45-54	2,480	19.6	0.0	\$39,332	3.7	1.3
Women	55-64	1,836	14.5	0.0	\$41,032	3.7	1.2
Women	65-Up	370	2.9	0.0	\$23,367	3.2	1.1
Women	N/A	2	0.0	0.0	\$21,908	1.5	1.0
Women	Total	12,645	100.0	37.2	\$29,854	3.4	1.4
Men	00-19	1,003	5.2	0.0	\$6,865	2.6	1.6
Men	20-24	2,000	10.4	0.0	\$28,354	3.1	1.6
Men	25-34	5,031	26.2	0.0	\$54,832	3.5	1.4
Men	35-44	3,911	20.3	0.0	\$66,046	3.6	1.3
Men	45-54	3,561	18.5	0.0	\$71,046	3.6	1.2
Men	55-64	3,121	16.2	0.0	\$76,479	3.7	1.1
Men	65-Up	602	3.1	0.0	\$48,943	3.4	1.1
Men	N/A	1	0.0	0.0	\$68,052	4.0	1.0
Men	Total	19,230	100.0	56.6	\$58,189	3.5	1.3
N/A	N/A	2,104	100.0	0.0	\$20,093	2.2	1.2
N/A	Total	2,104	100.0	6.2	\$20,093	2.2	1.2
Total	00-19	1,956	5.8	0.0	\$6,006	2.7	1.6
Total	20-24	3,486	10.3	0.0	\$22,310	3.1	1.7
Total	25-34	8,086	23.8	0.0	\$44,420	3.5	1.4
Total	35-44	6,374	18.8	0.0	\$54,127	3.6	1.3
Total	45-54	6,041	17.8	0.0	\$58,026	3.6	1.2
Total	55-64	4,957	14.6	0.0	\$63,350	3.7	1.2
Total	65-Up	972	2.9	0.0	\$39,207	3.3	1.1
Total	N/A	2,107	6.2	0.0	\$20,118	2.2	1.2
Total	Total	33,979	100.0	100.0	\$45,286	3.4	1.3

Note: Persons worked at any time during the year.

County Determination: Based on county of employment in which the person made the most money in the year.

N/A: Represents persons with demographic data that is unavailable.

N/A = Nonresidents, individuals for whom demographic data are not available.

Source: Demographics of Persons Working in Wyoming by County, Industry, Age, & Gender, 2000-2017.
Research & Planning, Wyoming Department of Workforce Services.

Prepared by M. Moore, Research & Planning, WY DWS, 6/12/18.

Average Earnings by Age and Gender with Place of Work in Campbell County in 2014

Gender	Age Group	Number	Age Percent	Gender Percent	Average Annual Wage	Average Quarters Worked	Average Annual Employers
Women	00-19	1,028	8.0	0.0	\$5,503	2.8	1.7
Women	20-24	1,488	11.6	0.0	\$15,161	3.1	1.8
Women	25-34	3,098	24.1	0.0	\$28,083	3.4	1.5
Women	35-44	2,582	20.1	0.0	\$35,868	3.5	1.4
Women	45-54	2,377	18.5	0.0	\$39,340	3.6	1.3
Women	55-64	1,899	14.8	0.0	\$41,817	3.7	1.2
Women	65-Up	360	2.8	0.0	\$27,439	3.4	1.1
Women	N/A	1	0.0	0.0	\$479	2.0	1.0
Women	Total	12,833	100.0	36.1	\$30,439	3.4	1.4
Men	00-19	1,118	5.6	0.0	\$7,677	2.7	1.7
Men	20-24	2,130	10.6	0.0	\$31,736	3.2	1.8
Men	25-34	5,176	25.9	0.0	\$56,808	3.5	1.4
Men	35-44	4,095	20.5	0.0	\$68,065	3.6	1.3
Men	45-54	3,527	17.6	0.0	\$72,063	3.6	1.2
Men	55-64	3,254	16.3	0.0	\$75,947	3.7	1.2
Men	65-Up	699	3.5	0.0	\$49,718	3.3	1.1
Men	N/A	2	0.0	0.0	\$39,828	2.5	1.0
Men	Total	20,001	100.0	56.3	\$59,251	3.5	1.4
N/A	N/A	2,668	100.0	0.0	\$20,150	2.1	1.1
N/A	Total	2,668	100.0	7.5	\$20,150	2.1	1.1
Total	00-19	2,146	6.0	0.0	\$6,635	2.7	1.7
Total	20-24	3,618	10.2	0.0	\$24,919	3.1	1.8
Total	25-34	8,274	23.3	0.0	\$46,053	3.4	1.5
Total	35-44	6,677	18.8	0.0	\$55,614	3.5	1.3
Total	45-54	5,904	16.6	0.0	\$58,888	3.6	1.3
Total	55-64	5,153	14.5	0.0	\$63,369	3.7	1.2
Total	65-Up	1,059	3.0	0.0	\$42,144	3.4	1.1
Total	N/A	2,671	7.5	0.0	\$20,158	2.1	1.1
Total	Total	35,502	100.0	100.0	\$45,898	3.3	1.4

Note: Persons worked at any time during the year.

County Determination: Based on county of employment in which the person made the most money in the year.

N/A: Represents persons with demographic data that is unavailable.

N/A = Nonresidents, individuals for whom demographic data are not available.

Source: Demographics of Persons Working in Wyoming by County, Industry, Age, & Gender, 2000-2017.

Research & Planning, Wyoming Department of Workforce Services.

Prepared by M. Moore, Research & Planning, WY DWS, 6/12/18.

Average Earnings by Age and Gender with Place of Work in Campbell County in 2015

Gender	Age Group	Number	Age Percent	Gender Percent	Average Annual Wage	Average Quarters Worked	Average Annual Employers
Women	00-19	1,015	7.9	0.0	\$5,701	2.8	1.7
Women	20-24	1,425	11.1	0.0	\$15,829	3.1	1.8
Women	25-34	3,165	24.6	0.0	\$28,634	3.4	1.5
Women	35-44	2,629	20.4	0.0	\$36,300	3.6	1.4
Women	45-54	2,276	17.7	0.0	\$41,221	3.6	1.3
Women	55-64	1,980	15.4	0.0	\$42,523	3.7	1.2
Women	65-Up	398	3.1	0.0	\$26,097	3.4	1.1
Women	Total	12,888	100.0	37.0	\$31,254	3.4	1.4
Men	00-19	1,068	5.5	0.0	\$7,358	2.8	1.6
Men	20-24	1,957	10.1	0.0	\$29,812	3.2	1.6
Men	25-34	4,931	25.4	0.0	\$55,660	3.5	1.4
Men	35-44	4,085	21.0	0.0	\$69,526	3.6	1.3
Men	45-54	3,363	17.3	0.0	\$73,811	3.7	1.2
Men	55-64	3,316	17.1	0.0	\$75,981	3.7	1.1
Men	65-Up	701	3.6	0.0	\$51,450	3.4	1.1
Men	N/A	4	0.0	0.0	\$45,531	3.3	1.8
Men	Total	19,425	100.0	55.8	\$59,773	3.5	1.3
N/A	N/A	2,506	100.0	0.0	\$20,392	2.2	1.1
N/A	Total	2,506	100.0	7.2	\$20,392	2.2	1.1
Total	00-19	2,083	6.0	0.0	\$6,551	2.8	1.6
Total	20-24	3,382	9.7	0.0	\$23,920	3.2	1.7
Total	25-34	8,096	23.3	0.0	\$45,094	3.5	1.4
Total	35-44	6,714	19.3	0.0	\$56,515	3.6	1.3
Total	45-54	5,639	16.2	0.0	\$60,657	3.6	1.3
Total	55-64	5,296	15.2	0.0	\$63,472	3.7	1.2
Total	65-Up	1,099	3.2	0.0	\$42,269	3.4	1.1
Total	N/A	2,510	7.2	0.0	\$20,432	2.2	1.1
Total	Total	34,819	100.0	100.0	\$46,383	3.4	1.3

Note: Persons worked at any time during the year.

County Determination: Based on county of employment in which the person made the most money in the year.

N/A: Represents persons with demographic data that is unavailable.

N/A = Nonresidents, individuals for whom demographic data are not available.

Source: Demographics of Persons Working in Wyoming by County, Industry, Age, & Gender, 2000-2017.
Research & Planning, Wyoming Department of Workforce Services.

Prepared by M. Moore, Research & Planning, WY DWS, 6/12/18.

Average Earnings by Age and Gender with Place of Work in Campbell County in 2016

Gender	Age Group	Number	Age Percent	Gender Percent	Average Annual Wage	Average Quarters Worked	Average Annual Employers
Women	00-19	853	7.0	0.0	\$5,419	2.8	1.5
Women	20-24	1,249	10.3	0.0	\$15,092	3.1	1.6
Women	25-34	2,998	24.7	0.0	\$28,304	3.4	1.4
Women	35-44	2,543	20.9	0.0	\$35,646	3.6	1.3
Women	45-54	2,124	17.5	0.0	\$39,857	3.6	1.2
Women	55-64	1,968	16.2	0.0	\$40,308	3.6	1.2
Women	65-Up	404	3.3	0.0	\$24,650	3.3	1.1
Women	Total	12,139	100.0	38.7	\$30,721	3.4	1.3
Men	00-19	836	4.8	0.0	\$5,705	2.7	1.4
Men	20-24	1,569	9.0	0.0	\$24,422	3.1	1.5
Men	25-34	4,267	24.6	0.0	\$50,150	3.4	1.3
Men	35-44	3,838	22.1	0.0	\$62,589	3.5	1.3
Men	45-54	3,060	17.6	0.0	\$67,148	3.6	1.2
Men	55-64	3,089	17.8	0.0	\$69,627	3.6	1.1
Men	65-Up	710	4.1	0.0	\$44,749	3.2	1.1
Men	N/A	2	0.0	0.0	\$63,701	4.0	1.0
Men	Total	17,371	100.0	55.4	\$54,674	3.4	1.3
N/A	N/A	1,854	100.0	0.0	\$21,245	2.4	1.1
N/A	Total	1,854	100.0	5.9	\$21,245	2.4	1.1
Total	00-19	1,689	5.4	0.0	\$5,560	2.8	1.4
Total	20-24	2,818	9.0	0.0	\$20,287	3.1	1.6
Total	25-34	7,265	23.2	0.0	\$41,135	3.4	1.4
Total	35-44	6,381	20.3	0.0	\$51,852	3.5	1.3
Total	45-54	5,184	16.5	0.0	\$55,967	3.6	1.2
Total	55-64	5,057	16.1	0.0	\$58,217	3.6	1.1
Total	65-Up	1,114	3.6	0.0	\$37,460	3.2	1.1
Total	N/A	1,856	5.9	0.0	\$21,291	2.4	1.1
Total	Total	31,364	100.0	100.0	\$43,427	3.4	1.3

Note: Persons worked at any time during the year.

County Determination: Based on county of employment in which the person made the most money in the year.

N/A: Represents persons with demographic data that is unavailable.

N/A = Nonresidents, individuals for whom demographic data are not available.

Source: Demographics of Persons Working in Wyoming by County, Industry, Age, & Gender, 2000-2017.
Research & Planning, Wyoming Department of Workforce Services.

Prepared by M. Moore, Research & Planning, WY DWS, 6/12/18.

Average Earnings by Age and Gender with Place of Work in Campbell County in 2017

Gender	Age Group	Number	Age Percent	Gender Percent	Average Annual Wage	Average Quarters Worked	Average Annual Employers
Women	00-19	856	7.4	0.0	\$5,472	2.8	1.6
Women	20-24	1,147	9.9	0.0	\$16,184	3.2	1.7
Women	25-34	2,743	23.7	0.0	\$29,679	3.5	1.4
Women	35-44	2,535	21.9	0.0	\$36,603	3.6	1.3
Women	45-54	1,924	16.6	0.0	\$42,197	3.6	1.3
Women	55-64	1,951	16.9	0.0	\$40,558	3.7	1.2
Women	65-Up	415	3.6	0.0	\$27,051	3.4	1.1
Women	N/A	1	0.0	0.0	\$99	1.0	1.0
Women	Total	11,572	100.0	38.8	\$31,886	3.5	1.4
Men	00-19	891	5.5	0.0	\$7,009	2.6	1.5
Men	20-24	1,375	8.5	0.0	\$26,201	3.1	1.7
Men	25-34	3,906	24.2	0.0	\$55,058	3.5	1.4
Men	35-44	3,660	22.7	0.0	\$69,706	3.6	1.3
Men	45-54	2,748	17.0	0.0	\$72,084	3.6	1.2
Men	55-64	2,875	17.8	0.0	\$72,646	3.6	1.1
Men	65-Up	695	4.3	0.0	\$46,015	3.3	1.1
Men	N/A	2	0.0	0.0	\$65,889	4.0	1.0
Men	Total	16,152	100.0	54.1	\$58,910	3.5	1.3
N/A	N/A	2,129	100.0	0.0	\$20,334	2.2	1.2
N/A	Total	2,129	100.0	7.1	\$20,334	2.2	1.2
Total	00-19	1,747	5.9	0.0	\$6,256	2.7	1.6
Total	20-24	2,522	8.4	0.0	\$21,645	3.2	1.7
Total	25-34	6,649	22.3	0.0	\$44,588	3.5	1.4
Total	35-44	6,195	20.8	0.0	\$56,160	3.6	1.3
Total	45-54	4,672	15.7	0.0	\$59,776	3.6	1.3
Total	55-64	4,826	16.2	0.0	\$59,674	3.6	1.1
Total	65-Up	1,110	3.7	0.0	\$38,925	3.3	1.1
Total	N/A	2,132	7.1	0.0	\$20,367	2.2	1.2
Total	Total	29,853	100.0	100.0	\$45,684	3.4	1.3

Note: Persons worked at any time during the year.

County Determination: Based on county of employment in which the person made the most money in the year.

N/A: Represents persons with demographic data that is unavailable.

N/A = Nonresidents, individuals for whom demographic data are not available.

Source: Demographics of Persons Working in Wyoming by County, Industry, Age, & Gender, 2000-2017.

Research & Planning, Wyoming Department of Workforce Services.

Prepared by M. Moore, Research & Planning, WY DWS, 6/12/18.