

Wyoming Unemployment Insurance Claims Report

July 2018

Information for Wyoming by Industry and
County of Residence of Claimant

by: Patrick Manning, Principal Economist, and Chris McGrath, Senior Statistician
Research & Planning, Wyoming Department of Workforce Services

Published August 7, 2018



Wyoming Unemployment Insurance Claims Report, July 2018

Information for Wyoming by Industry and County of Residence of Claimant

Wyoming Department of Workforce Services

John Cox, Director

Research & Planning

Tony Glover, Manager

Carola Cowan, Bureau of Labor Statistics Programs Supervisor

Prepared by:

Patrick Manning, Principal Economist

Chris McGrath, Senior Statistician

Editorial Committee:

David Bullard, Katelynd Faler, Elyse Gagne, Matthew Halama,

Chris McGrath, Michael Moore, and Carol Touns

Published August 7, 2018.

©2018 by the Wyoming Department of Workforce Services, Research & Planning

Department of Workforce Services Nondiscrimination Statement

The Department of Workforce Services does not discriminate on the basis of race, color, religion, national origin, sex, age, or disability. It is our intention that all individuals seeking services from our agency be given equal opportunity and that eligibility decisions be based upon applicable statutes, rules, and regulations.

Research & Planning

P.O. Box 2760

Casper, WY 82602

Phone: (307) 473-3807

Fax: (307) 473-3834

R&P Website: <http://doe.state.wy.us/LMI/>

Unemployment Insurance Claims: <http://doe.state.wy.us/LMI/ui.htm>

URL for this report: http://doe.state.wy.us/LMI/UI/UI_Claims_0718.pdf

“Your Source for Wyoming Labor Market Information”

Who We Are

Research & Planning (R&P) functions as an exclusively statistical entity within the Wyoming Department of Workforce Services. R&P collects, analyzes, and publishes timely and accurate labor market information (LMI) meeting established statistical standards. We work to make the labor market more efficient by providing the public and the public’s representatives with the information needed for evidence-based, informed decision making.



Wyoming Unemployment Insurance Claims Report, July 2018

Initial Claims Hit 10-Year Low

by: Patrick Manning, Principal Economist, and Chris McGrath, Senior Statistician

In July 2018, initial Unemployment Insurance (UI) claims decreased by 27.4% (-360 claims) compared to July 2017. There were fewer initial claims in July 2018 than during any other month over the last 10 years.

Initial Claims

There were 956 initial claims in July 2018. The largest decreases were seen in construction (-137 claims, or -51.3%), leisure & hospitality (-69, or -50.4%), and government (-62, or -42.3%). The majority of industries experienced a decline in the number of initial claims with the exception of a slight increase in mining (four claims, or 6.8%).

Laramie County had the largest number of initial claims (157), followed by Natrona (124) and Fremont (92) counties.

Continued Claims

In July, there were 2,422 claimants with continued claims, down 28.9% (984 fewer individuals) over the year. Total continued weeks claimed decreased by 27.8% (3,358 fewer weeks claimed). Continued weeks claimed for the month of July were at the lowest level since 2006, with 8,711 total weeks claimed.

All industry sectors experienced a decrease in over-the-year continued weeks claimed with the exception of other services (10 weeks, or 4.1%). Construction experienced the largest decrease of 700 weeks (-34.5%), followed by trade, transportation, warehousing, & utilities (-640 weeks, or -35.0%).

Natrona County experienced the largest decrease in continued claims (-595 weeks, or -32.6%). Continued claims for out-of-state claimants decreased by 866 weeks, or -38.5%.

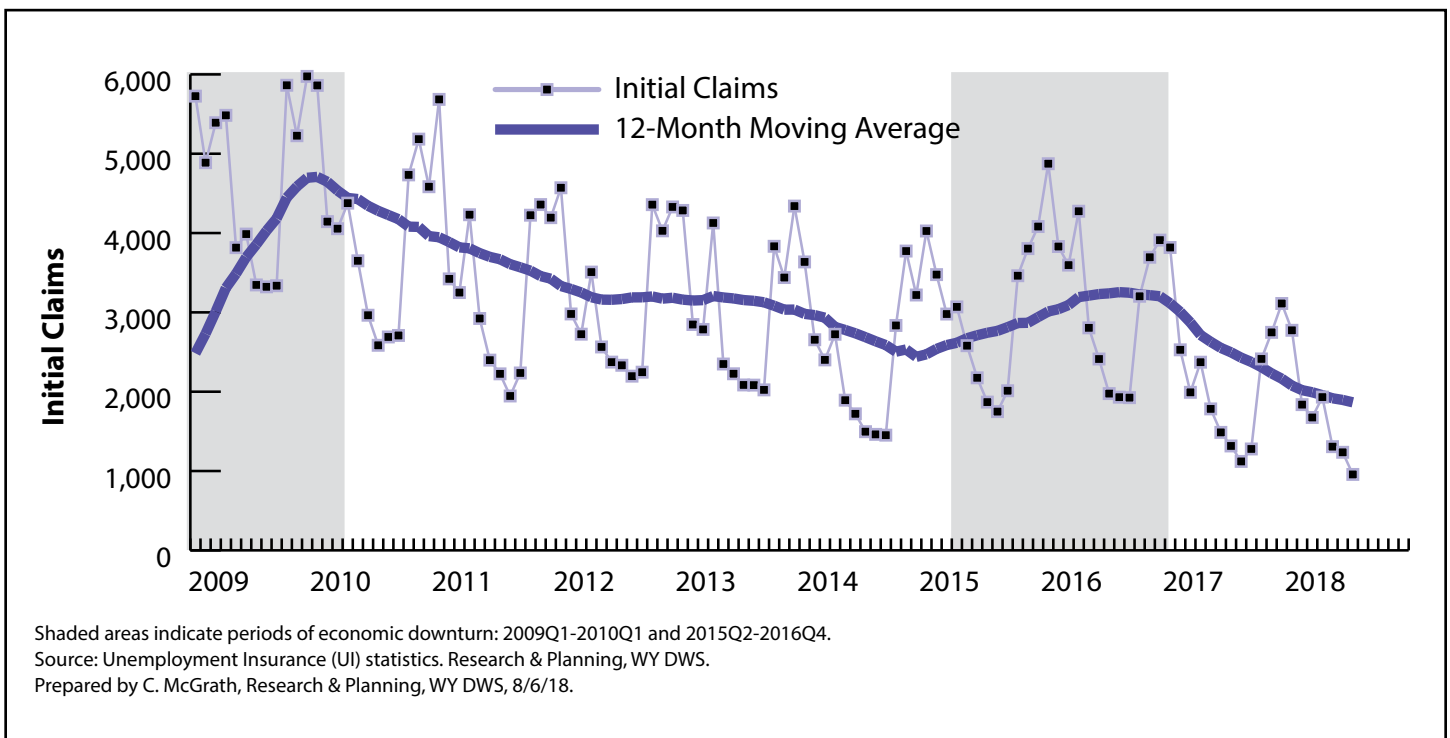
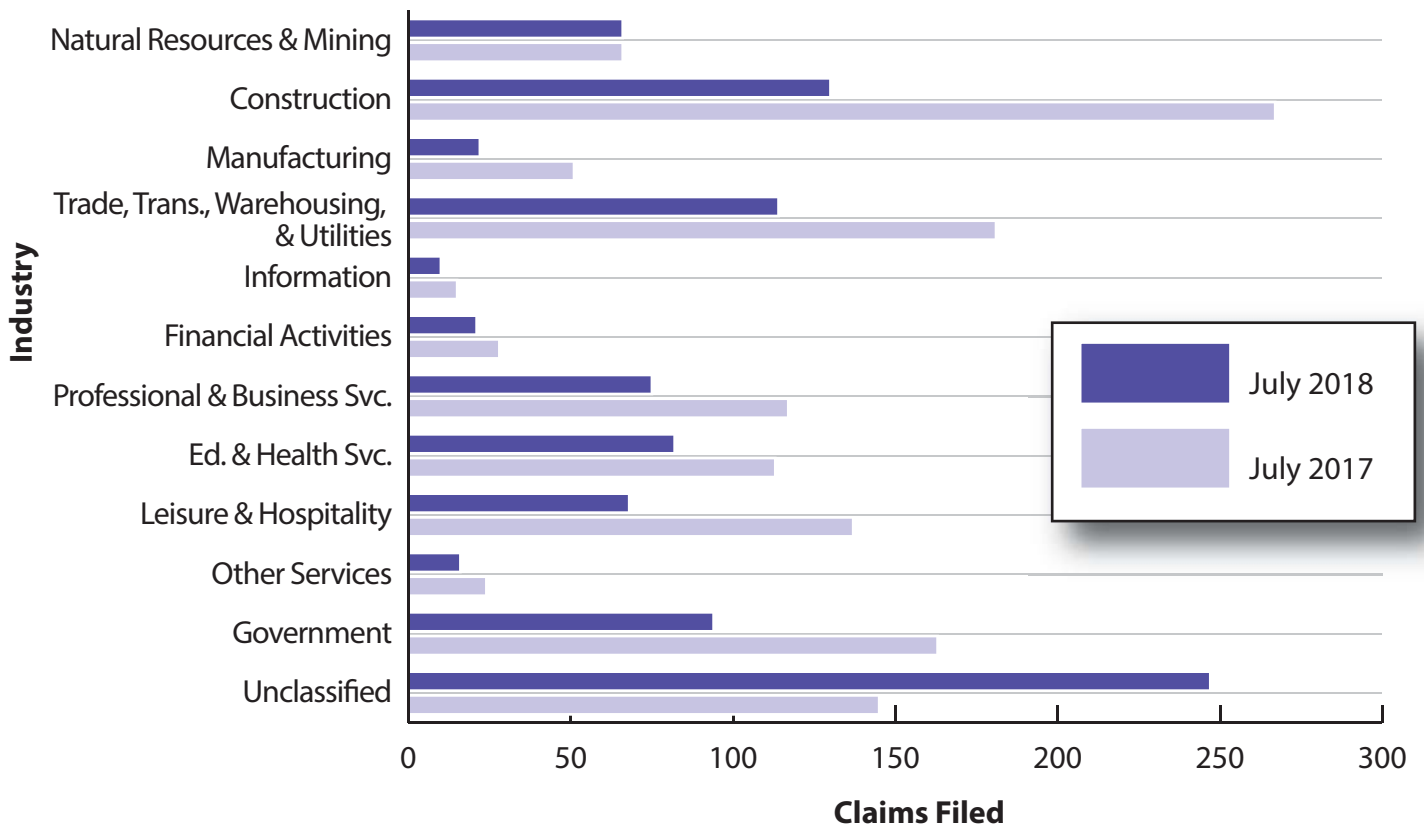


Figure 1: Total Number of New Initial Unemployment Insurance Claims for Wyoming by Year and Month, January 2009 to July 2018

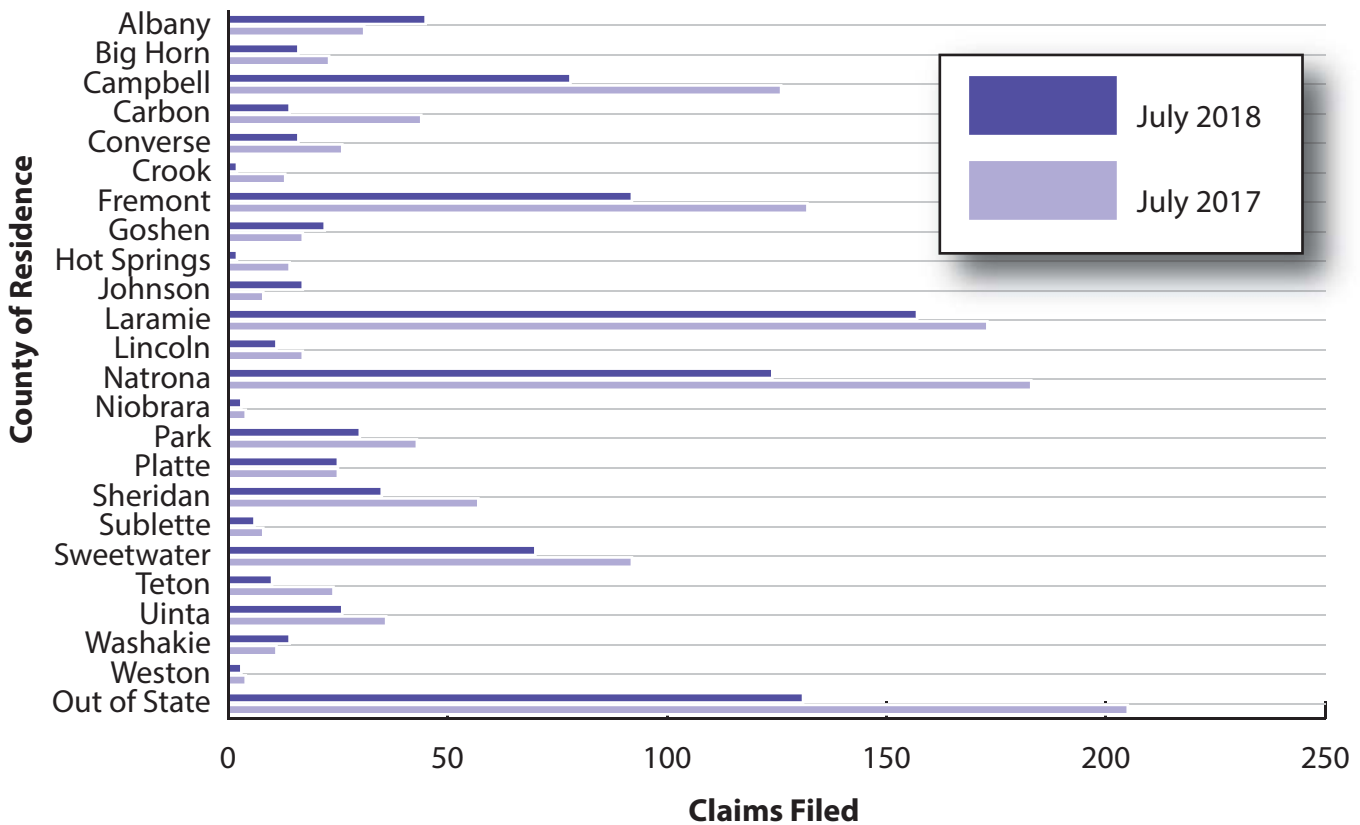
Initial Claims Tables

	Claims Filed			Percent Change Claims Filed		Difference
	Jul-18	Jun-18	Jul-17	Jul-18 Jun-18	Jul-18 Jul-17	Jul-18 Jul-17
<u>Wyoming Statewide</u>						
Total Claims Filed	956	1,236	1,316	-22.7	-27.4	-360
Goods-Producing	220	344	386	-36.0	-43.0	-166
Natural Resources and Mining (11,21)	66	58	66	13.8	0.0	0
Mining (21)	63	47	59	34.0	6.8	4
Oil & Gas Extraction (211)	4	1	7	300.0	-42.9	-3
Construction (23)	130	245	267	-46.9	-51.3	-137
Manufacturing (31 - 33)	22	38	51	-42.1	-56.9	-29
Service-Providing	394	561	621	-29.8	-36.6	-227
Trade, Transportation, and Utilities (22,42,44-45,48-49)	114	141	181	-19.1	-37.0	-67
Wholesale Trade (42)	11	19	28	-42.1	-60.7	-17
Retail Trade (44 - 45)	68	73	112	-6.8	-39.3	-44
Transportation, Warehousing and Utilities (22,48 - 49)	35	49	41	-28.6	-14.6	-6
Information (51)	10	10	15	0.0	-33.3	-5
Financial Activities (52, 53)	21	21	28	0.0	-25.0	-7
Professional and Business Services (54 - 56)	75	61	117	23.0	-35.9	-42
Educational and Health Services (61 - 62)	82	172	113	-52.3	-27.4	-31
Leisure and Hospitality (71 - 72)	68	118	137	-42.4	-50.4	-69
Other Services, except Public Admin. (81)	16	33	24	-51.5	-33.3	-8
Government	94	125	163	-24.8	-42.3	-69
Federal Government	0	14	15	-100.0	-100.0	-15
State Government	11	8	22	37.5	-50.0	-11
Local Government	82	102	125	-19.6	-34.4	-43
Local Education	22	43	37	-48.8	-40.5	-15
Unclassified	247	204	145	21.1	70.3	102
<u>Laramie County (Place of Residence)</u>						
Total Claims Filed	156	173	173	-9.8	-9.8	-17
Goods-Producing	31	50	37	-38.0	-16.2	-6
Construction	20	43	31	-53.5	-35.5	-11
Service-Providing	74	94	109	-21.3	-32.1	-35
Trade, Transportation, and Utilities (22,42,44-45,48-49)	20	21	29	-4.8	-31.0	-9
Financial Activities (52, 53)	5	2	7	150.0	-28.6	-2
Professional and Business Services (54 - 56)	22	13	31	69.2	-29.0	-9
Educational and Health Services (61 - 62)	12	36	23	-66.7	-47.8	-11
Leisure and Hospitality (71 - 72)	11	14	17	-21.4	-35.3	-6
Government	11	11	17	0.0	-35.3	-6
Unclassified	38	16	8	137.5	375.0	30
<u>Natrona County (Place of Residence)</u>						
Total Claims Filed	124	168	182	-26.2	-31.9	-58
Goods-Producing	24	49	50	-51.0	-52.0	-26
Construction	9	32	29	-71.9	-69.0	-20
Service-Providing	76	101	116	-24.8	-34.5	-40
Trade, Transportation, and Utilities (22,42,44-45,48-49)	16	12	24	33.3	-33.3	-8
Financial Activities (52, 53)	4	5	9	-20.0	-55.6	-5
Professional and Business Services (54 - 56)	13	12	25	8.3	-48.0	-12
Educational and Health Services (61 - 62)	16	40	18	-60.0	-11.1	-2
Leisure and Hospitality (71 - 72)	19	18	27	5.6	-29.6	-8
Government	2	5	9	-60.0	-77.8	-7
Unclassified	20	11	5	81.8	300.0	15

Initial Unemployment Insurance Claims by Major Industry, July 2018



Initial Unemployment Insurance Claims by County of Residence, July 2018

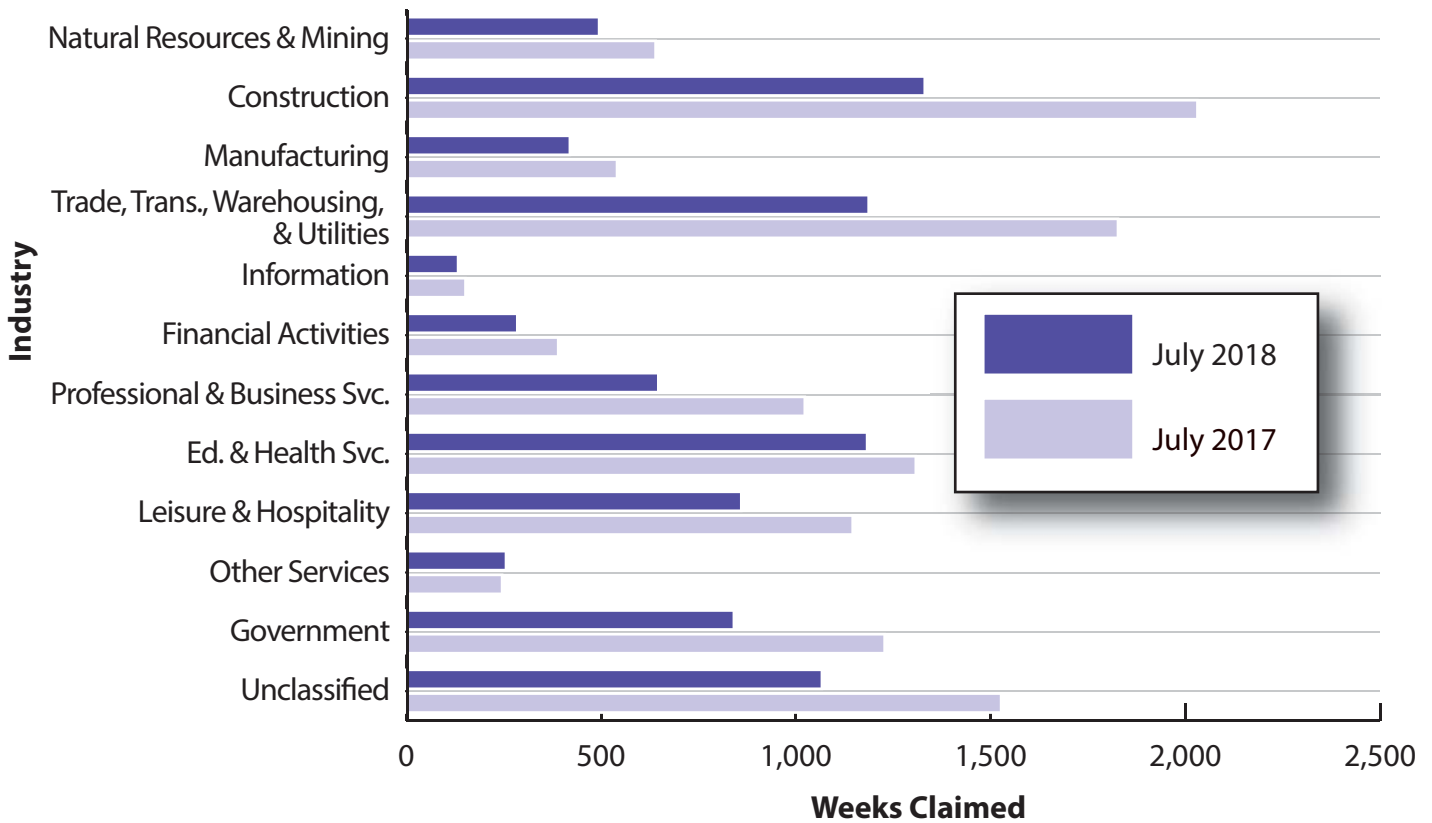


Source: Research & Planning, Wyoming Department of Workforce Services. Retrieved from <http://doe.state.wy.us/LMI/ui.htm>.

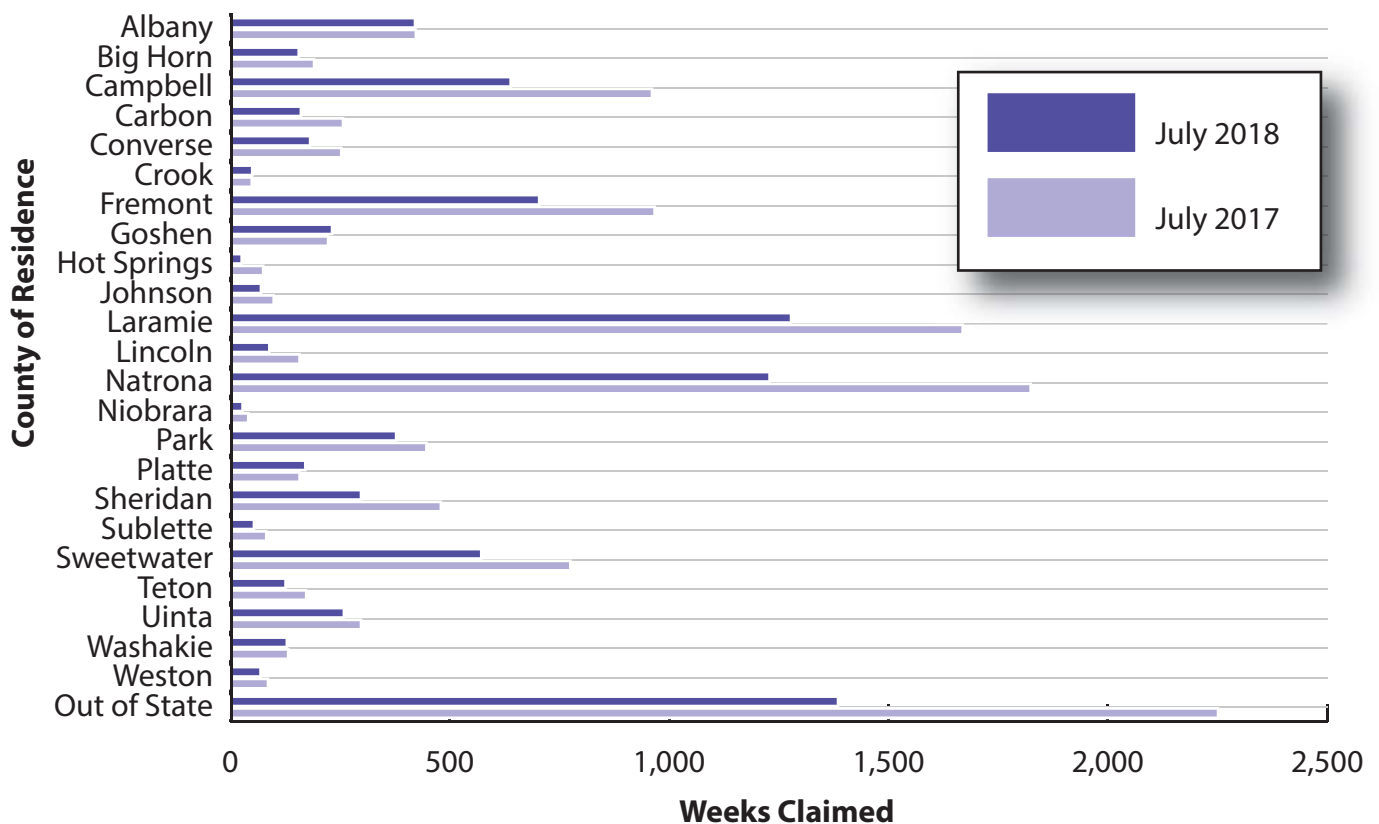
Continued Weeks Claimed Tables

	Claims Filed			Percent Change Claims		Difference
	Jul-18	Jun-18	Jul-17	Jul-18 Jun-18	Jul-18 Jul-17	Jul-18 Jul-17
<u>Wyoming Statewide</u>						
Total Continued Weeks Claimed	8,711	9,629	12,069	-9.5	-27.8	-3,358
Total Unique Claimants	2,422	2,852	3,406	-15.1	-28.9	-984
Benefit Exhaustions	337	284	273	18.7	23.4	64
Benefit Exhaustion Rates	13.9%	10.0%	8.0%	4.0%	5.9%	
Goods-Producing	2,247	2,635	3,213	-14.7	-30.1	-966
Natural Resources and Mining (11,21)	495	543	640	-8.8	-22.7	-145
Mining (21)	420	457	592	-8.1	-29.1	-172
Oil & Gas Extraction (211)	27	15	166	80.0	-83.7	-139
Construction (23)	1,331	1,578	2,031	-15.7	-34.5	-700
Manufacturing (31 - 33)	420	513	541	-18.1	-22.4	-121
Service-Providing	4,556	5,231	6,099	-12.9	-25.3	-1,543
Trade, Transportation, and Utilities (22,42,44-45,48-49)	1,187	1,479	1,827	-19.7	-35.0	-640
Wholesale Trade (42)	161	195	344	-17.4	-53.2	-183
Retail Trade (44 - 45)	679	795	994	-14.6	-31.7	-315
Transportation, Warehousing and Utilities (22,48 - 49)	347	489	489	-29.0	-29.0	-142
Information (51)	133	123	152	8.1	-12.5	-19
Financial Activities (52, 53)	285	308	390	-7.5	-26.9	-105
Professional and Business Services (54 - 56)	647	821	1,023	-21.2	-36.8	-376
Educational and Health Services (61 - 62)	1,183	1,045	1,308	13.2	-9.6	-125
Leisure and Hospitality (71 - 72)	860	1,172	1,146	-26.6	-25.0	-286
Other Services, except Public Admin. (81)	256	277	246	-7.6	4.1	10
Government	841	949	1,228	-11.4	-31.5	-387
Federal Government	62	139	150	-55.4	-58.7	-88
State Government	111	124	152	-10.5	-27.0	-41
Local Government	666	685	925	-2.8	-28.0	-259
Local Education	172	185	277	-7.0	-37.9	-105
Unclassified	1,067	812	1,527	31.4	-30.1	-460
<u>Laramie County (Place of Residence)</u>						
Total Continued Weeks Claimed	1,278	1,365	1,669	-6.4	-23.4	-391
Total Unique Claimants	351	398	455	-11.8	-22.9	-104
Goods-Producing	273	342	333	-20.2	-18.0	-60
Construction	207	251	268	-17.5	-22.8	-61
Service-Providing	818	878	1,094	-6.8	-25.2	-276
Trade, Transportation, and Utilities (22,42,44-45,48-49)	264	311	355	-15.1	-25.6	-91
Financial Activities (52, 53)	62	64	87	-3.1	-28.7	-25
Professional and Business Services (54 - 56)	205	188	298	9.0	-31.2	-93
Educational and Health Services (61 - 62)	175	168	206	4.2	-15.0	-31
Leisure and Hospitality (71 - 72)	126	125	131	0.8	-3.8	-5
Government	86	92	146	-6.5	-41.1	-60
Unclassified	99	51	95	94.1	4.2	4
<u>Natrona County (Place of Residence)</u>						
Total Continued Weeks Claimed	1,228	1,406	1,824	-12.7	-32.7	-596
Total Unique Claimants	338	416	508	-18.8	-33.5	-170
Goods-Producing	242	324	402	-25.3	-39.8	-160
Construction	126	192	232	-34.4	-45.7	-106
Service-Providing	907	1,014	1,269	-10.6	-28.5	-362
Trade, Transportation, and Utilities (22,42,44-45,48-49)	203	258	381	-21.3	-46.7	-178
Financial Activities (52, 53)	59	78	94	-24.4	-37.2	-35
Professional and Business Services (54 - 56)	90	135	171	-33.3	-47.4	-81
Educational and Health Services (61 - 62)	312	282	294	10.6	6.1	18
Leisure and Hospitality (71 - 72)	167	168	229	-0.6	-27.1	-62
Government	24	42	87	-42.9	-72.4	-63
Unclassified	54	24	63	125.0	-14.3	-9

Continued Unemployment Insurance Claims by Major Industry, July 2018



Continued Unemployment Insurance Claims by County of Residence, July 2018



Source: Research & Planning, Wyoming Department of Workforce Services. Retrieved from <http://doe.state.wy.us/LMI/ui.htm>.

Wyoming Normalized^a Unemployment Statistics: Continued Claims by County of Residence, July 2018

County	June 18	June 17	Over-the-Year Change	
			N	%
Albany	421	423	-2	-0.5
Big Horn	156	191	-35	-18.3
Campbell	639	961	-322	-33.5
Carbon	161	257	-96	-37.4
Converse	182	253	-71	-28.1
Crook	50	49	1	2.0
Fremont	704	967	-263	-27.2
Goshen	232	223	9	4.0
Hot Springs	26	75	-49	-65.3
Johnson	70	99	-29	-29.3
Laramie	1,278	1,669	-391	-23.4
Lincoln	89	158	-69	-43.7
Natrona	1,229	1,824	-595	-32.6
Niobrara	28	41	-13	-31.7
Park	378	447	-69	-15.4
Platte	171	158	13	8.2
Sheridan	298	480	-182	-37.9
Sublette	54	82	-28	-34.1
Sweetwater	572	775	-203	-26.2
Teton	126	173	-47	-27.2
Uinta	259	298	-39	-13.1
Washakie	129	132	-3	-2.3
Weston	69	86	-17	-19.8
Unknown	N/D	N/D	N/D	N/D
Out of State	1,385	2,251	-866	-38.5
Normalized Total^a	8,712	12,070	-3,358	-27.8
Real Total^b	8,048	11,150	-3,102	-27.8

^aAn average month is considered 4.33 weeks. If a month has four weeks, the normalization factor is 1.0825. If the month has five weeks, the normalization factor is 0.866. The number of raw claims is multiplied by the normalization factor to achieve the normalized claims counts.

^bRaw claims data that have not been multiplied by the normalization factor.

N/D = Not discloseable due to confidentiality.

All totals are subject to rounding error and may not add to the sum of their respective components.

The table above conforms to Wyoming Employment Security Law - Wyoming Statute 27-3-603 regarding confidentiality.

Source: Research & Planning, Wyoming Department of Workforce Services. Retrieved from <http://doe.state.wy.us/LMI/ui.htm>