

Wyoming Occupational Fatalities Increase to 45 in 2023

The Research & Planning section of the Wyoming Department of Workforce Services reported today that the number of occupational fatalities in Wyoming rose from 34 in 2022 to 45 in 2023 (an increase of 11 deaths, or 32.4%; see Figure 1 below). Variations in fatalities from year to year are, to some extent, the result of the random nature of work-related accidents. Furthermore, there is not always a direct relationship between workplace fatalities and workplace safety. For example, suicides and homicides that occur in the workplace are included as occupational fatalities. Workplace fatalities are counted in the state where the injury occurred, not necessarily the state of residence or the state of death.

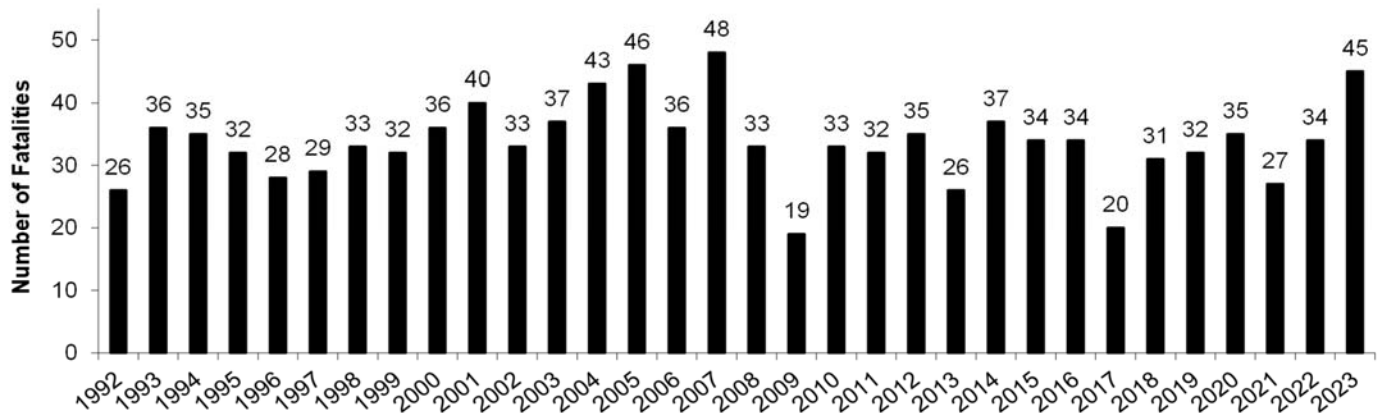
In 2023, 17 deaths occurred in natural resources & mining (or 37.8% of all deaths; see Table below). Of those 17, nine deaths (20.0%) were reported in agriculture, forestry, fishing, & hunting, and eight deaths (17.8%) occurred in mining, quarrying, & oil & gas extraction. Transportation & warehousing accounted for 13 deaths (28.9%) and construction accounted for three deaths (6.7%).

Across all industries, two-thirds of 2023 workplace deaths (66.7%) were the result of transportation incidents (see Figure 2). Transportation incidents include highway crashes, pedestrian vehicular incidents, aircraft incidents, and water vehicle incidents.

The fatality counts featured in this release are compiled by the Census of Fatal Occupational Injuries (CFOI) program (a joint effort of Research & Planning and the Bureau of Labor Statistics) and may not match those from other programs, such as the Occupational Safety and Health Administration (OSHA) because of differences in scope and methodology. In addition to regular wage and salary employees, CFOI counts include volunteer workers and self-employed individuals. The CFOI program utilizes a wide variety of data sources, such as OSHA reports, workers' compensation, vital records, coroner's reports, media reports, and police reports of vehicle crashes. Additionally, similar data sources from other states are routinely used to identify workplace fatalities. For example, a worker fatally injured in a highway incident in Wyoming may be covered by workers' compensation in another state. That information is made available to R&P as part of data sharing agreements between the states and federal government (BLS).

For official definitions used in the CFOI program, please visit <https://www.bls.gov/iif/overview/cfoi-scope.htm>.

Figure 1: Wyoming Occupational Fatalities, 1992-2023



Source: U.S. Department of Labor, Bureau of Labor Statistics, Census of Fatal Occupational Injuries, in cooperation with State and Federal Agencies.

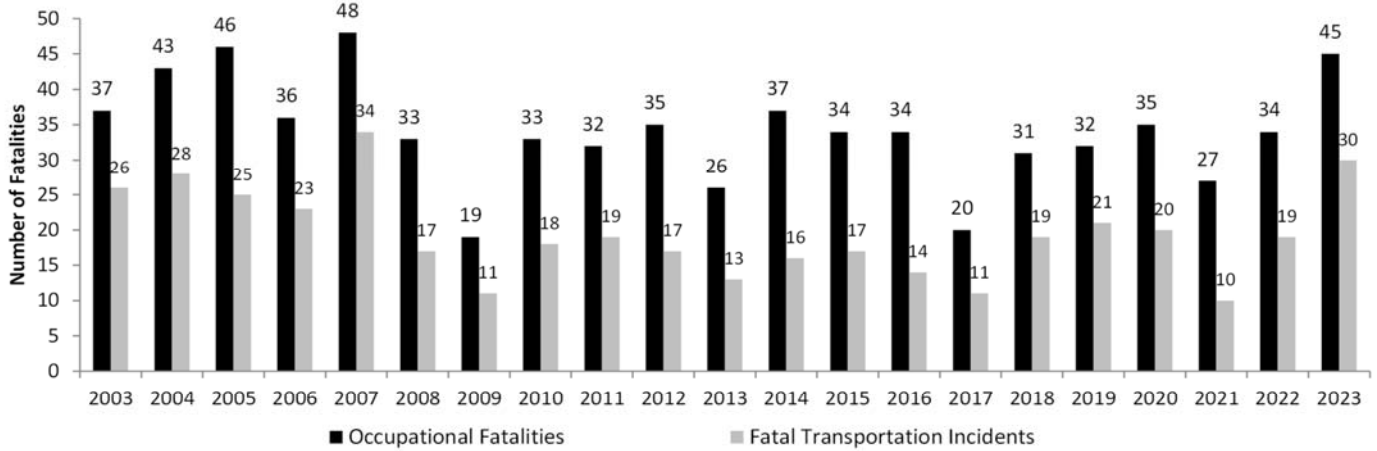
Table: Wyoming Occupational Fatalities by Selected Industry, 2023

Industry	Number	Col. %
Total	45	100.0%
Total Private	44	97.8%
Natural Resources & Mining	17	37.8%
Agriculture, Forestry, Fishing, & Hunting	9	20.0%
Mining, Quarrying, & Oil & Gas Extraction	8	17.8%
Construction	3	6.7%
Trade, Transportation, and Utilities	16	35.6%
Transportation & Warehousing	13	28.9%
All Other Industries	ND	-----

Source: U.S. Department of Labor, Bureau of Labor Statistics, in cooperation with State and Federal Agencies, Census of Fatal Occupational Injuries.

ND-Nondiscloseable because data do not meet publication criteria

Figure 2: Wyoming Occupational Fatalities and Fatal Transportation Incidents, 2003-2023



Source: U.S. Department of Labor, Bureau of Labor Statistics, Census of Fatal Occupational Injuries, in cooperation with State and Federal Agencies.

From 2003 to 2010 transportation incidents are based on the BLS Occupational Injury and Illness Classification System (OIICS). From 2011 to 2022 transportation incidents are based on OIICS 2.01. Due to substantial differences between OIICS 2.01 and the original OIICS structure, data for transportation incidents from 2011 forward should not be compared to prior years.

**Wyoming Department of Workforce Services
Research & Planning**

December 19, 2024

Internet Address: <https://doe.state.wy.us/LMI/CFOI/toc.htm>

Contacts:

David Bullard, Senior Economist

david.bullard@wyo.gov 307-473-3810

Carola Cowan, BLS Programs Supervisor

carola.cowan@wyo.gov 307-473-3804

Wyoming Department of Workforce Services
Research & Planning
PO Box 2760
Casper WY 82602-2760