

# Natrona County at a Glance, 2018

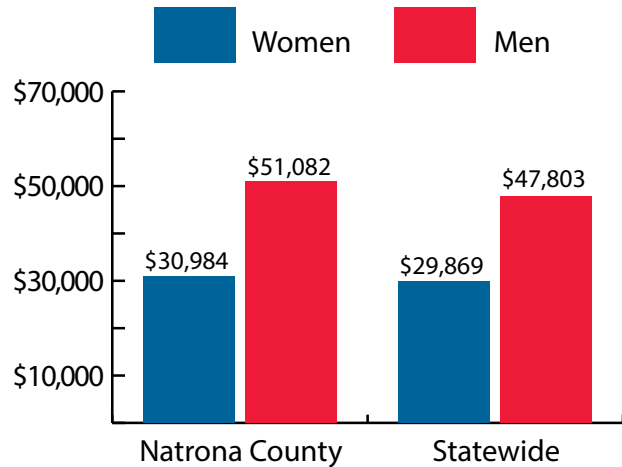
Demographics of Persons Working in Wyoming by County, Industry, Age, & Gender, 2000-2018

**Table: Total Number of Persons Working in Natrona County, WY, at Any Time by Gender and Age, 2017-2018**

Gender	2017	2018	Change	
			N	%
Women	20,425	20,228	-197	-1.0
Men	24,468	24,739	271	1.1
Nonresidents	3,411	4,723	1,312	38.5
<b>Total</b>	<b>48,304</b>	<b>49,690</b>	<b>1,386</b>	<b>2.9</b>

Age	2017	2018	Change	
			N	%
00-19	2,728	2,876	148	5.4
20-24	4,652	4,641	-11	-0.2
25-34	10,959	10,614	-345	-3.1
35-44	9,354	9,627	273	2.9
45-54	7,578	7,502	-76	-1.0
55-64	7,125	7,095	-30	-0.4
65-Up	2,455	2,573	118	4.8
Nonresidents	3,453	4,762	1,309	37.9
<b>Total</b>	<b>48,304</b>	<b>49,690</b>	<b>1,386</b>	<b>2.9</b>



## Women's Wages as % of Men's Wages

Natrona County: 60.7%

Total, Statewide: 62.5%

Figure: Average Annual Wages by Gender, 2018

Total = 49,690

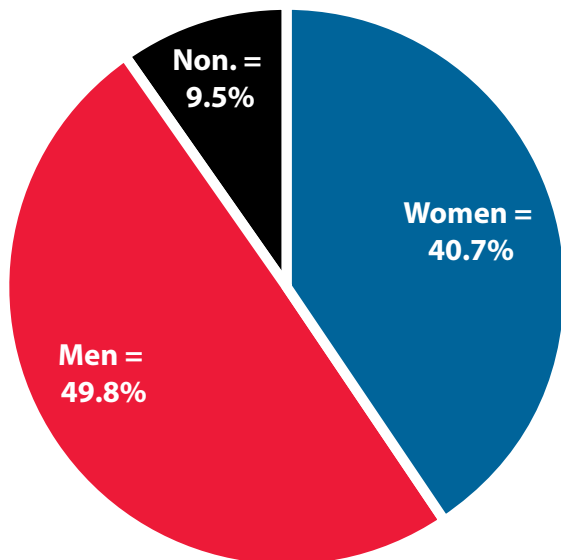


Figure: Persons Working by Gender, 2018

Total = 49,690

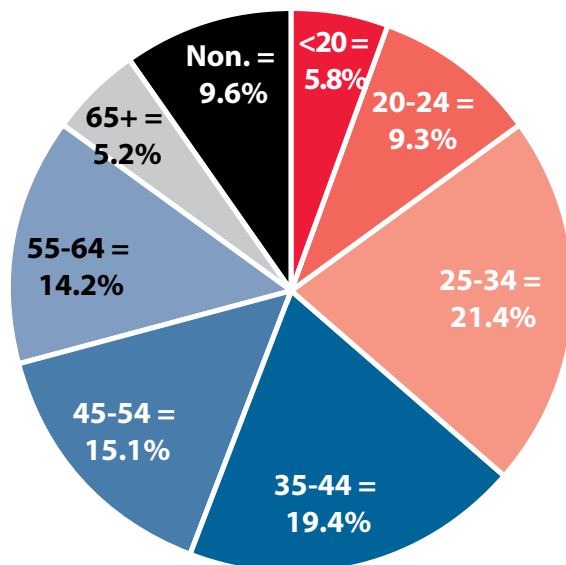


Figure: Persons Working by Age, 2018

Note: Nonresidents are individuals for whom demographic data are not available.

Source: Demographics of Persons Working in Wyoming by County, Industry, Age, & Gender, 2000-2018. Research & Planning, Wyoming Department of Workforce Services. Prepared by M. Moore, Research & Planning, WY DWS, 7/31/19.

## Persons Working in Natrona County by Gender and Age, 2000-2018

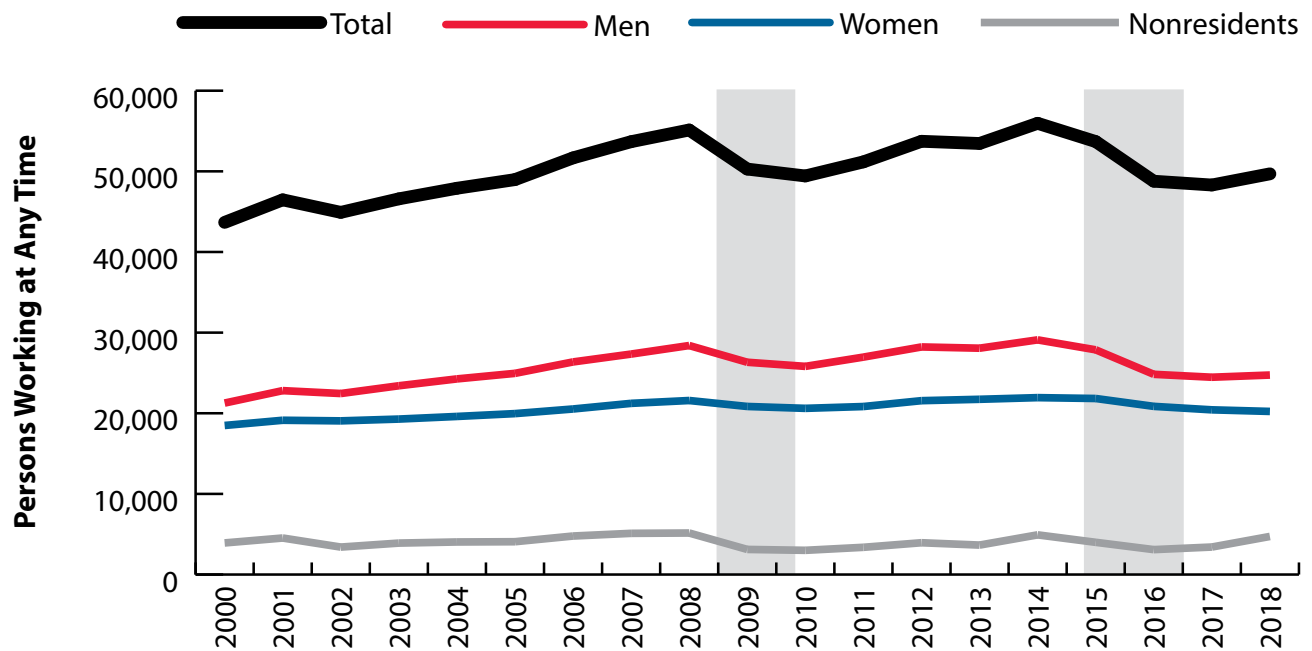


Figure: Persons Working in Natrona County at Any Time by Gender, 2000-2018

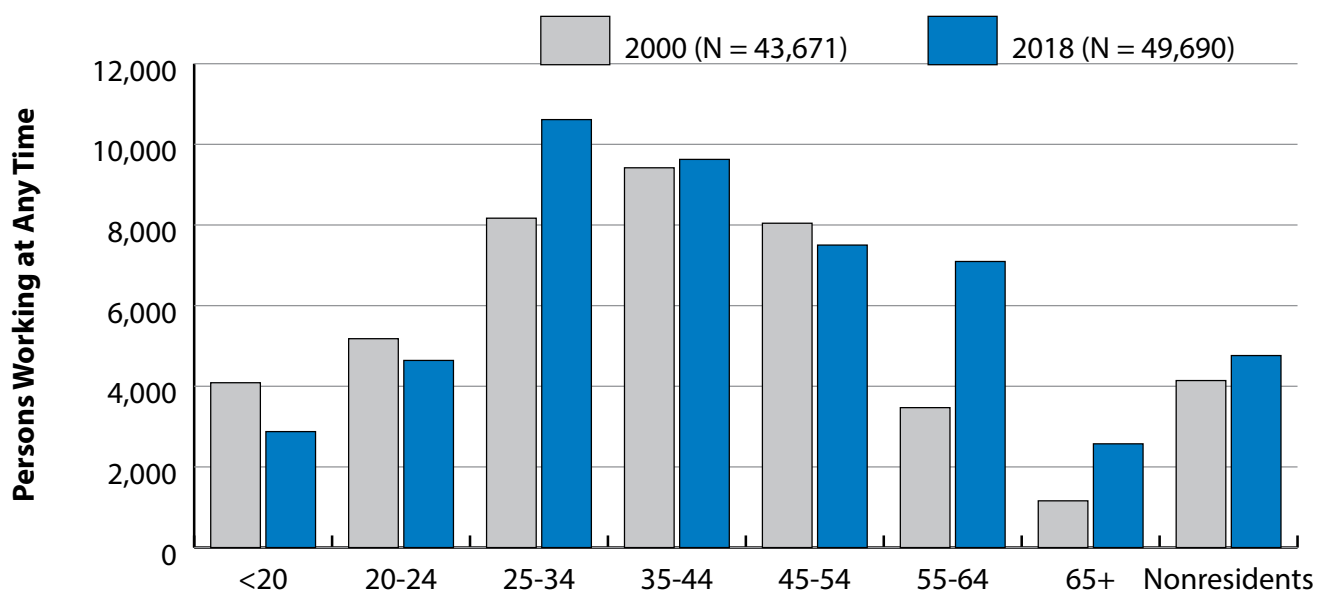


Figure: Persons Working in Natrona County at Any Time by Age, 2000-2018

Note: Nonresidents are individuals for whom demographic data are not available.

Shaded areas indicate periods of economic downturn: 2009Q1-2010Q1 and 2015Q2-2016Q4.

Source: Demographics of Persons Working in Wyoming by County, Industry, Age, & Gender, 2000-2018. Research & Planning, Wyoming Department of Workforce Services. Prepared by M. Moore, Research & Planning, WY DWS, 7/31/19.

### Average Earnings by Age and Gender with Place of Work in Natrona County in 2000

Gender	Age Group	Number	Age Percent	Gender Percent	Average Annual Wage	Average Quarters Worked	Average Annual Employers
Women	00-19	1,977	10.7	0.0	\$3,617	2.7	1.9
Women	20-24	2,437	13.2	0.0	\$8,482	3.2	2.0
Women	25-34	3,554	19.2	0.0	\$14,295	3.3	1.6
Women	35-44	4,362	23.6	0.0	\$18,758	3.5	1.5
Women	45-54	3,799	20.6	0.0	\$21,579	3.6	1.3
Women	55-64	1,685	9.1	0.0	\$18,245	3.4	1.2
Women	65-Up	523	2.8	0.0	\$9,584	3.1	1.2
Women	N/A	149	0.8	0.0	\$9,352	2.6	1.6
Women	Total	18,486	100.0	42.3	\$15,123	3.3	1.6
Men	00-19	2,111	9.9	0.0	\$3,813	2.5	1.8
Men	20-24	2,743	12.9	0.0	\$12,039	3.1	2.1
Men	25-34	4,615	21.7	0.0	\$21,967	3.3	1.7
Men	35-44	5,057	23.8	0.0	\$32,553	3.5	1.4
Men	45-54	4,245	20.0	0.0	\$41,826	3.5	1.3
Men	55-64	1,785	8.4	0.0	\$36,989	3.4	1.2
Men	65-Up	636	3.0	0.0	\$19,532	3.1	1.1
Men	N/A	73	0.3	0.0	\$20,678	2.5	1.4
Men	Total	21,265	100.0	48.7	\$26,550	3.3	1.6
N/A	N/A	3,920	100.0	0.0	\$8,161	1.6	1.1
N/A	Total	3,920	100.0	9.0	\$8,161	1.6	1.1
Total	00-19	4,088	9.4	0.0	\$3,718	2.6	1.9
Total	20-24	5,180	11.9	0.0	\$10,365	3.1	2.1
Total	25-34	8,169	18.7	0.0	\$18,629	3.3	1.7
Total	35-44	9,419	21.6	0.0	\$26,164	3.5	1.5
Total	45-54	8,044	18.4	0.0	\$32,264	3.6	1.3
Total	55-64	3,470	7.9	0.0	\$27,887	3.4	1.2
Total	65-Up	1,159	2.7	0.0	\$15,043	3.1	1.2
Total	N/A	4,142	9.5	0.0	\$8,424	1.6	1.1
Total	Total	43,671	100.0	100.0	\$20,062	3.2	1.5

Note: Persons worked at any time during the year.

County Determination: Based on county of employment in which the person made the most money in the year.

N/A: Represents persons with demographic data that is unavailable.

N/A = Nonresidents, individuals for whom demographic data are not available.

Source: Demographics of Persons Working in Wyoming by County, Industry, Age, & Gender, 2000-2018.

Research & Planning, Wyoming Department of Workforce Services.

Prepared by M. Moore, Research & Planning, WY DWS, 7/31/19.

### Average Earnings by Age and Gender with Place of Work in Natrona County in 2001

Gender	Age Group	Number	Age Percent	Gender Percent	Average Annual Wage	Average Quarters Worked	Average Annual Employers
Women	00-19	2,014	10.5	0.0	\$3,839	2.7	1.9
Women	20-24	2,533	13.2	0.0	\$8,891	3.2	2.1
Women	25-34	3,735	19.5	0.0	\$14,885	3.3	1.6
Women	35-44	4,294	22.4	0.0	\$19,283	3.4	1.5
Women	45-54	4,036	21.1	0.0	\$22,602	3.6	1.3
Women	55-64	1,776	9.3	0.0	\$19,755	3.4	1.2
Women	65-Up	594	3.1	0.0	\$10,544	3.1	1.1
Women	N/A	150	0.8	0.0	\$9,910	2.6	1.5
Women	Total	19,132	100.0	41.2	\$15,822	3.3	1.6
Men	00-19	2,188	9.6	0.0	\$4,388	2.6	1.8
Men	20-24	3,061	13.4	0.0	\$13,227	3.1	2.1
Men	25-34	4,997	21.9	0.0	\$23,748	3.3	1.7
Men	35-44	5,263	23.1	0.0	\$34,486	3.4	1.5
Men	45-54	4,552	20.0	0.0	\$42,474	3.5	1.3
Men	55-64	1,969	8.6	0.0	\$39,864	3.4	1.2
Men	65-Up	691	3.0	0.0	\$19,057	3.1	1.1
Men	N/A	85	0.4	0.0	\$20,872	2.6	1.4
Men	Total	22,806	100.0	49.1	\$27,933	3.3	1.6
N/A	N/A	4,529	100.0	0.0	\$8,062	1.5	1.1
N/A	Total	4,529	100.0	9.7	\$8,062	1.5	1.1
Total	00-19	4,202	9.0	0.0	\$4,125	2.6	1.9
Total	20-24	5,594	12.0	0.0	\$11,264	3.1	2.1
Total	25-34	8,732	18.8	0.0	\$19,957	3.3	1.7
Total	35-44	9,557	20.6	0.0	\$27,655	3.4	1.5
Total	45-54	8,588	18.5	0.0	\$33,135	3.5	1.3
Total	55-64	3,745	8.1	0.0	\$30,328	3.4	1.2
Total	65-Up	1,285	2.8	0.0	\$15,122	3.1	1.1
Total	N/A	4,764	10.3	0.0	\$8,349	1.5	1.1
Total	Total	46,467	100.0	100.0	\$21,010	3.1	1.5

Note: Persons worked at any time during the year.

County Determination: Based on county of employment in which the person made the most money in the year.

N/A: Represents persons with demographic data that is unavailable.

N/A = Nonresidents, individuals for whom demographic data are not available.

Source: Demographics of Persons Working in Wyoming by County, Industry, Age, & Gender, 2000-2018.

Research & Planning, Wyoming Department of Workforce Services.

Prepared by M. Moore, Research & Planning, WY DWS, 7/31/19.

### Average Earnings by Age and Gender with Place of Work in Natrona County in 2002

Gender	Age Group	Number	Age Percent	Gender Percent	Average Annual Wage	Average Quarters Worked	Average Annual Employers
Women	00-19	1,946	10.2	0.0	\$3,752	2.7	1.8
Women	20-24	2,518	13.2	0.0	\$9,013	3.1	1.9
Women	25-34	3,657	19.2	0.0	\$15,651	3.3	1.6
Women	35-44	4,114	21.6	0.0	\$20,088	3.5	1.5
Women	45-54	4,165	21.9	0.0	\$23,496	3.6	1.3
Women	55-64	1,944	10.2	0.0	\$20,409	3.5	1.2
Women	65-Up	595	3.1	0.0	\$10,767	3.1	1.2
Women	N/A	118	0.6	0.0	\$10,161	2.6	1.4
Women	Total	19,057	100.0	42.4	\$16,530	3.3	1.5
Men	00-19	2,090	9.3	0.0	\$4,196	2.6	1.8
Men	20-24	3,011	13.4	0.0	\$13,050	3.1	2.0
Men	25-34	4,924	21.9	0.0	\$24,295	3.3	1.7
Men	35-44	4,908	21.9	0.0	\$34,736	3.4	1.4
Men	45-54	4,615	20.6	0.0	\$42,359	3.5	1.3
Men	55-64	2,132	9.5	0.0	\$41,329	3.4	1.2
Men	65-Up	695	3.1	0.0	\$20,950	3.2	1.2
Men	N/A	73	0.3	0.0	\$25,741	2.6	1.3
Men	Total	22,448	100.0	50.0	\$28,431	3.3	1.5
N/A	N/A	3,406	100.0	0.0	\$7,934	1.6	1.1
N/A	Total	3,406	100.0	7.6	\$7,934	1.6	1.1
Total	00-19	4,036	9.0	0.0	\$3,982	2.6	1.8
Total	20-24	5,529	12.3	0.0	\$11,211	3.1	2.0
Total	25-34	8,581	19.1	0.0	\$20,611	3.3	1.6
Total	35-44	9,022	20.1	0.0	\$28,057	3.4	1.4
Total	45-54	8,780	19.5	0.0	\$33,411	3.5	1.3
Total	55-64	4,076	9.1	0.0	\$31,352	3.5	1.2
Total	65-Up	1,290	2.9	0.0	\$16,253	3.1	1.2
Total	N/A	3,597	8.0	0.0	\$8,368	1.6	1.1
Total	Total	44,911	100.0	100.0	\$21,827	3.2	1.5

Note: Persons worked at any time during the year.

County Determination: Based on county of employment in which the person made the most money in the year.

N/A: Represents persons with demographic data that is unavailable.

N/A = Nonresidents, individuals for whom demographic data are not available.

Source: Demographics of Persons Working in Wyoming by County, Industry, Age, & Gender, 2000-2018.

Research & Planning, Wyoming Department of Workforce Services.

Prepared by M. Moore, Research & Planning, WY DWS, 7/31/19.

### Average Earnings by Age and Gender with Place of Work in Natrona County in 2003

Gender	Age Group	Number	Age Percent	Gender Percent	Average Annual Wage	Average Quarters Worked	Average Annual Employers
Women	00-19	1,831	9.5	0.0	\$3,809	2.7	1.9
Women	20-24	2,641	13.7	0.0	\$9,038	3.1	1.9
Women	25-34	3,697	19.2	0.0	\$16,317	3.3	1.6
Women	35-44	4,028	20.9	0.0	\$20,974	3.5	1.4
Women	45-54	4,252	22.1	0.0	\$24,727	3.6	1.3
Women	55-64	2,093	10.9	0.0	\$21,814	3.5	1.2
Women	65-Up	630	3.3	0.0	\$11,641	3.2	1.2
Women	N/A	107	0.6	0.0	\$11,034	2.5	1.4
Women	Total	19,279	100.0	41.4	\$17,375	3.3	1.5
Men	00-19	2,038	8.7	0.0	\$4,348	2.5	1.7
Men	20-24	3,203	13.7	0.0	\$13,171	3.0	1.9
Men	25-34	5,185	22.1	0.0	\$24,959	3.3	1.7
Men	35-44	4,937	21.1	0.0	\$35,945	3.4	1.4
Men	45-54	4,905	21.0	0.0	\$42,533	3.5	1.3
Men	55-64	2,341	10.0	0.0	\$42,828	3.5	1.2
Men	65-Up	728	3.1	0.0	\$22,039	3.2	1.2
Men	N/A	73	0.3	0.0	\$18,027	2.4	1.5
Men	Total	23,410	100.0	50.2	\$29,225	3.3	1.5
N/A	N/A	3,900	100.0	0.0	\$7,790	1.5	1.1
N/A	Total	3,900	100.0	8.4	\$7,790	1.5	1.1
Total	00-19	3,869	8.3	0.0	\$4,093	2.6	1.8
Total	20-24	5,844	12.5	0.0	\$11,303	3.1	1.9
Total	25-34	8,882	19.1	0.0	\$21,362	3.3	1.6
Total	35-44	8,965	19.2	0.0	\$29,218	3.4	1.4
Total	45-54	9,157	19.7	0.0	\$34,265	3.5	1.3
Total	55-64	4,434	9.5	0.0	\$32,908	3.5	1.2
Total	65-Up	1,358	2.9	0.0	\$17,215	3.2	1.2
Total	N/A	4,080	8.8	0.0	\$8,058	1.6	1.1
Total	Total	46,589	100.0	100.0	\$22,527	3.1	1.5

Note: Persons worked at any time during the year.

County Determination: Based on county of employment in which the person made the most money in the year.

N/A: Represents persons with demographic data that is unavailable.

N/A = Nonresidents, individuals for whom demographic data are not available.

Source: Demographics of Persons Working in Wyoming by County, Industry, Age, & Gender, 2000-2018.

Research & Planning, Wyoming Department of Workforce Services.

Prepared by M. Moore, Research & Planning, WY DWS, 7/31/19.

### Average Earnings by Age and Gender with Place of Work in Natrona County in 2004

Gender	Age Group	Number	Age Percent	Gender Percent	Average Annual Wage	Average Quarters Worked	Average Annual Employers
Women	00-19	1,778	9.1	0.0	\$4,057	2.8	1.9
Women	20-24	2,720	13.9	0.0	\$9,684	3.1	1.9
Women	25-34	3,870	19.7	0.0	\$16,770	3.3	1.6
Women	35-44	3,909	19.9	0.0	\$22,138	3.5	1.5
Women	45-54	4,366	22.3	0.0	\$26,196	3.6	1.3
Women	55-64	2,204	11.2	0.0	\$22,975	3.5	1.3
Women	65-Up	668	3.4	0.0	\$11,735	3.2	1.2
Women	N/A	89	0.5	0.0	\$12,035	2.6	1.5
Women	Total	19,604	100.0	40.9	\$18,308	3.4	1.5
Men	00-19	2,054	8.5	0.0	\$4,725	2.6	1.8
Men	20-24	3,278	13.5	0.0	\$14,500	3.1	1.9
Men	25-34	5,473	22.6	0.0	\$27,370	3.3	1.7
Men	35-44	4,939	20.4	0.0	\$37,355	3.4	1.5
Men	45-54	5,204	21.5	0.0	\$45,357	3.5	1.3
Men	55-64	2,453	10.1	0.0	\$47,606	3.5	1.2
Men	65-Up	792	3.3	0.0	\$22,577	3.2	1.2
Men	N/A	66	0.3	0.0	\$27,113	2.6	1.4
Men	Total	24,259	100.0	50.6	\$31,494	3.3	1.5
N/A	N/A	4,038	100.0	0.0	\$9,118	1.7	1.1
N/A	Total	4,038	100.0	8.4	\$9,118	1.7	1.1
Total	00-19	3,832	8.0	0.0	\$4,415	2.7	1.8
Total	20-24	5,998	12.5	0.0	\$12,316	3.1	1.9
Total	25-34	9,343	19.5	0.0	\$22,979	3.3	1.7
Total	35-44	8,848	18.5	0.0	\$30,632	3.5	1.5
Total	45-54	9,570	20.0	0.0	\$36,615	3.6	1.3
Total	55-64	4,657	9.7	0.0	\$35,949	3.5	1.2
Total	65-Up	1,460	3.0	0.0	\$17,617	3.2	1.2
Total	N/A	4,193	8.8	0.0	\$9,463	1.7	1.1
Total	Total	47,901	100.0	100.0	\$24,211	3.2	1.5

Note: Persons worked at any time during the year.

County Determination: Based on county of employment in which the person made the most money in the year.

N/A: Represents persons with demographic data that is unavailable.

N/A = Nonresidents, individuals for whom demographic data are not available.

Source: Demographics of Persons Working in Wyoming by County, Industry, Age, & Gender, 2000-2018.

Research & Planning, Wyoming Department of Workforce Services.

Prepared by M. Moore, Research & Planning, WY DWS, 7/31/19.

### Average Earnings by Age and Gender with Place of Work in Natrona County in 2005

Gender	Age Group	Number	Age Percent	Gender Percent	Average Annual Wage	Average Quarters Worked	Average Annual Employers
Women	00-19	1,836	9.2	0.0	\$4,368	2.8	1.9
Women	20-24	2,715	13.6	0.0	\$10,643	3.2	2.0
Women	25-34	3,978	19.9	0.0	\$17,802	3.3	1.6
Women	35-44	3,837	19.2	0.0	\$23,221	3.5	1.5
Women	45-54	4,457	22.3	0.0	\$27,364	3.6	1.4
Women	55-64	2,383	11.9	0.0	\$24,487	3.5	1.2
Women	65-Up	679	3.4	0.0	\$13,228	3.3	1.2
Women	N/A	72	0.4	0.0	\$13,330	2.8	1.6
Women	Total	19,957	100.0	40.7	\$19,396	3.4	1.6
Men	00-19	2,069	8.3	0.0	\$4,971	2.6	1.9
Men	20-24	3,406	13.7	0.0	\$17,208	3.1	2.0
Men	25-34	5,685	22.8	0.0	\$29,890	3.3	1.7
Men	35-44	4,968	19.9	0.0	\$39,699	3.4	1.5
Men	45-54	5,292	21.2	0.0	\$48,993	3.5	1.3
Men	55-64	2,683	10.8	0.0	\$49,105	3.5	1.2
Men	65-Up	798	3.2	0.0	\$26,783	3.3	1.2
Men	N/A	47	0.2	0.0	\$26,779	2.7	1.5
Men	Total	24,948	100.0	50.9	\$34,059	3.3	1.5
N/A	N/A	4,070	100.0	0.0	\$11,990	1.8	1.1
N/A	Total	4,070	100.0	8.3	\$11,990	1.8	1.1
Total	00-19	3,905	8.0	0.0	\$4,687	2.7	1.9
Total	20-24	6,121	12.5	0.0	\$14,296	3.1	2.0
Total	25-34	9,663	19.7	0.0	\$24,914	3.3	1.7
Total	35-44	8,805	18.0	0.0	\$32,518	3.4	1.5
Total	45-54	9,749	19.9	0.0	\$39,105	3.6	1.3
Total	55-64	5,066	10.3	0.0	\$37,525	3.5	1.2
Total	65-Up	1,477	3.0	0.0	\$20,552	3.3	1.2
Total	N/A	4,189	8.6	0.0	\$12,179	1.8	1.1
Total	Total	48,975	100.0	100.0	\$26,250	3.2	1.5

Note: Persons worked at any time during the year.

County Determination: Based on county of employment in which the person made the most money in the year.

N/A: Represents persons with demographic data that is unavailable.

N/A = Nonresidents, individuals for whom demographic data are not available.

Source: Demographics of Persons Working in Wyoming by County, Industry, Age, & Gender, 2000-2018.

Research & Planning, Wyoming Department of Workforce Services.

Prepared by M. Moore, Research & Planning, WY DWS, 7/31/19.



### Average Earnings by Age and Gender with Place of Work in Natrona County in 2006

Gender	Age Group	Number	Age Percent	Gender Percent	Average Annual Wage	Average Quarters Worked	Average Annual Employers
Women	00-19	1,991	9.7	0.0	\$4,681	2.8	2.0
Women	20-24	2,654	12.9	0.0	\$11,727	3.2	2.0
Women	25-34	4,182	20.4	0.0	\$19,423	3.4	1.6
Women	35-44	3,822	18.6	0.0	\$24,834	3.5	1.5
Women	45-54	4,569	22.3	0.0	\$28,753	3.6	1.4
Women	55-64	2,499	12.2	0.0	\$27,772	3.6	1.3
Women	65-Up	746	3.6	0.0	\$13,971	3.2	1.2
Women	N/A	67	0.3	0.0	\$15,561	2.8	1.4
Women	Total	20,530	100.0	39.7	\$20,888	3.4	1.6
Men	00-19	2,140	8.1	0.0	\$5,811	2.6	1.9
Men	20-24	3,569	13.5	0.0	\$20,876	3.1	2.0
Men	25-34	6,162	23.4	0.0	\$34,500	3.3	1.6
Men	35-44	5,120	19.4	0.0	\$44,575	3.4	1.5
Men	45-54	5,511	20.9	0.0	\$52,694	3.5	1.3
Men	55-64	2,961	11.2	0.0	\$55,047	3.5	1.2
Men	65-Up	865	3.3	0.0	\$30,075	3.2	1.2
Men	N/A	37	0.1	0.0	\$27,176	2.7	1.5
Men	Total	26,365	100.0	51.0	\$38,239	3.3	1.5
N/A	N/A	4,775	100.0	0.0	\$14,858	1.8	1.1
N/A	Total	4,775	100.0	9.2	\$14,858	1.8	1.1
Total	00-19	4,131	8.0	0.0	\$5,266	2.7	1.9
Total	20-24	6,223	12.0	0.0	\$16,974	3.2	2.0
Total	25-34	10,344	20.0	0.0	\$28,404	3.3	1.6
Total	35-44	8,942	17.3	0.0	\$36,137	3.4	1.5
Total	45-54	10,080	19.5	0.0	\$41,842	3.6	1.3
Total	55-64	5,460	10.6	0.0	\$42,564	3.6	1.2
Total	65-Up	1,611	3.1	0.0	\$22,618	3.2	1.2
Total	N/A	4,879	9.4	0.0	\$14,961	1.9	1.1
Total	Total	51,670	100.0	100.0	\$29,184	3.2	1.5

Note: Persons worked at any time during the year.

County Determination: Based on county of employment in which the person made the most money in the year.

N/A: Represents persons with demographic data that is unavailable.

N/A = Nonresidents, individuals for whom demographic data are not available.

Source: Demographics of Persons Working in Wyoming by County, Industry, Age, & Gender, 2000-2018.

Research & Planning, Wyoming Department of Workforce Services.

Prepared by M. Moore, Research & Planning, WY DWS, 7/31/19.

### Average Earnings by Age and Gender with Place of Work in Natrona County in 2007

Gender	Age Group	Number	Age Percent	Gender Percent	Average Annual Wage	Average Quarters Worked	Average Annual Employers
Women	00-19	2,056	9.7	0.0	\$4,842	2.8	2.0
Women	20-24	2,715	12.8	0.0	\$12,671	3.2	2.0
Women	25-34	4,378	20.6	0.0	\$21,297	3.4	1.6
Women	35-44	3,852	18.1	0.0	\$27,443	3.5	1.5
Women	45-54	4,646	21.9	0.0	\$31,576	3.6	1.4
Women	55-64	2,737	12.9	0.0	\$30,397	3.6	1.2
Women	65-Up	794	3.7	0.0	\$15,393	3.3	1.2
Women	N/A	50	0.2	0.0	\$20,640	3.0	1.2
Women	Total	21,228	100.0	39.5	\$22,916	3.4	1.6
Men	00-19	2,161	7.9	0.0	\$6,114	2.6	1.9
Men	20-24	3,702	13.5	0.0	\$22,314	3.2	1.9
Men	25-34	6,527	23.9	0.0	\$38,169	3.4	1.6
Men	35-44	5,195	19.0	0.0	\$47,978	3.4	1.4
Men	45-54	5,615	20.5	0.0	\$56,295	3.5	1.3
Men	55-64	3,179	11.6	0.0	\$58,830	3.6	1.2
Men	65-Up	925	3.4	0.0	\$33,609	3.2	1.2
Men	N/A	37	0.1	0.0	\$25,643	2.4	1.2
Men	Total	27,341	100.0	50.9	\$41,306	3.3	1.5
N/A	N/A	5,109	100.0	0.0	\$16,949	1.9	1.1
N/A	Total	5,109	100.0	9.5	\$16,949	1.9	1.1
Total	00-19	4,217	7.9	0.0	\$5,494	2.7	2.0
Total	20-24	6,417	12.0	0.0	\$18,234	3.2	1.9
Total	25-34	10,905	20.3	0.0	\$31,395	3.4	1.6
Total	35-44	9,047	16.9	0.0	\$39,234	3.5	1.5
Total	45-54	10,261	19.1	0.0	\$45,102	3.6	1.3
Total	55-64	5,916	11.0	0.0	\$45,676	3.6	1.2
Total	65-Up	1,719	3.2	0.0	\$25,195	3.3	1.2
Total	N/A	5,196	9.7	0.0	\$17,046	1.9	1.1
Total	Total	53,678	100.0	100.0	\$31,715	3.2	1.5

Note: Persons worked at any time during the year.

County Determination: Based on county of employment in which the person made the most money in the year.

N/A: Represents persons with demographic data that is unavailable.

N/A = Nonresidents, individuals for whom demographic data are not available.

Source: Demographics of Persons Working in Wyoming by County, Industry, Age, & Gender, 2000-2018.

Research & Planning, Wyoming Department of Workforce Services.

Prepared by M. Moore, Research & Planning, WY DWS, 7/31/19.

### Average Earnings by Age and Gender with Place of Work in Natrona County in 2008

Gender	Age Group	Number	Age Percent	Gender Percent	Average Annual Wage	Average Quarters Worked	Average Annual Employers
Women	00-19	2,003	9.3	0.0	\$5,329	2.9	1.9
Women	20-24	2,691	12.5	0.0	\$13,306	3.2	2.0
Women	25-34	4,610	21.4	0.0	\$23,291	3.4	1.7
Women	35-44	3,829	17.7	0.0	\$29,504	3.5	1.5
Women	45-54	4,631	21.5	0.0	\$33,015	3.6	1.4
Women	55-64	2,919	13.5	0.0	\$32,870	3.6	1.3
Women	65-Up	853	4.0	0.0	\$15,900	3.3	1.2
Women	N/A	44	0.2	0.0	\$18,891	3.0	1.4
Women	Total	21,580	100.0	39.1	\$24,563	3.4	1.6
Men	00-19	2,018	7.1	0.0	\$7,050	2.7	1.9
Men	20-24	3,772	13.3	0.0	\$24,259	3.1	1.9
Men	25-34	7,006	24.7	0.0	\$40,639	3.3	1.6
Men	35-44	5,362	18.9	0.0	\$51,210	3.4	1.5
Men	45-54	5,752	20.3	0.0	\$59,203	3.5	1.3
Men	55-64	3,435	12.1	0.0	\$61,806	3.6	1.2
Men	65-Up	1,033	3.6	0.0	\$34,835	3.2	1.1
Men	N/A	20	0.1	0.0	\$31,043	2.7	1.3
Men	Total	28,398	100.0	51.5	\$44,175	3.3	1.5
N/A	N/A	5,149	100.0	0.0	\$17,291	1.9	1.1
N/A	Total	5,149	100.0	9.3	\$17,291	1.9	1.1
Total	00-19	4,021	7.3	0.0	\$6,193	2.8	1.9
Total	20-24	6,463	11.7	0.0	\$19,699	3.2	1.9
Total	25-34	11,616	21.1	0.0	\$33,754	3.4	1.6
Total	35-44	9,191	16.7	0.0	\$42,167	3.5	1.5
Total	45-54	10,383	18.8	0.0	\$47,523	3.6	1.3
Total	55-64	6,354	11.5	0.0	\$48,513	3.6	1.2
Total	65-Up	1,886	3.4	0.0	\$26,271	3.3	1.2
Total	N/A	5,213	9.5	0.0	\$17,357	1.9	1.1
Total	Total	55,127	100.0	100.0	\$33,987	3.2	1.5

Note: Persons worked at any time during the year.

County Determination: Based on county of employment in which the person made the most money in the year.

N/A: Represents persons with demographic data that is unavailable.

N/A = Nonresidents, individuals for whom demographic data are not available.

Source: Demographics of Persons Working in Wyoming by County, Industry, Age, & Gender, 2000-2018.

Research & Planning, Wyoming Department of Workforce Services.

Prepared by M. Moore, Research & Planning, WY DWS, 7/31/19.

### Average Earnings by Age and Gender with Place of Work in Natrona County in 2009

Gender	Age Group	Number	Age Percent	Gender Percent	Average Annual Wage	Average Quarters Worked	Average Annual Employers
Women	00-19	1,579	7.6	0.0	\$5,267	2.9	1.6
Women	20-24	2,592	12.4	0.0	\$12,787	3.2	1.7
Women	25-34	4,631	22.2	0.0	\$23,525	3.4	1.5
Women	35-44	3,729	17.9	0.0	\$30,221	3.6	1.4
Women	45-54	4,413	21.2	0.0	\$33,519	3.6	1.3
Women	55-64	2,996	14.4	0.0	\$33,632	3.6	1.2
Women	65-Up	870	4.2	0.0	\$16,086	3.4	1.1
Women	N/A	32	0.2	0.0	\$20,647	3.1	1.1
Women	Total	20,842	100.0	41.5	\$25,258	3.4	1.4
Men	00-19	1,495	5.7	0.0	\$6,435	2.6	1.5
Men	20-24	3,326	12.6	0.0	\$19,281	3.1	1.6
Men	25-34	6,638	25.2	0.0	\$35,172	3.3	1.4
Men	35-44	5,059	19.2	0.0	\$47,492	3.4	1.3
Men	45-54	5,328	20.2	0.0	\$55,532	3.5	1.2
Men	55-64	3,464	13.2	0.0	\$59,017	3.5	1.1
Men	65-Up	998	3.8	0.0	\$34,018	3.3	1.1
Men	N/A	17	0.1	0.0	\$36,956	2.9	1.0
Men	Total	26,325	100.0	52.4	\$41,116	3.3	1.3
N/A	N/A	3,114	100.0	0.0	\$17,007	2.0	1.1
N/A	Total	3,114	100.0	6.2	\$17,007	2.0	1.1
Total	00-19	3,074	6.1	0.0	\$5,835	2.8	1.6
Total	20-24	5,918	11.8	0.0	\$16,437	3.1	1.6
Total	25-34	11,269	22.4	0.0	\$30,386	3.3	1.4
Total	35-44	8,788	17.5	0.0	\$40,163	3.5	1.3
Total	45-54	9,741	19.4	0.0	\$45,559	3.6	1.2
Total	55-64	6,460	12.8	0.0	\$47,244	3.6	1.2
Total	65-Up	1,868	3.7	0.0	\$25,666	3.3	1.1
Total	N/A	3,163	6.3	0.0	\$17,151	2.0	1.1
Total	Total	50,281	100.0	100.0	\$33,050	3.3	1.3

Note: Persons worked at any time during the year.

County Determination: Based on county of employment in which the person made the most money in the year.

N/A: Represents persons with demographic data that is unavailable.

N/A = Nonresidents, individuals for whom demographic data are not available.

Source: Demographics of Persons Working in Wyoming by County, Industry, Age, & Gender, 2000-2018.

Research & Planning, Wyoming Department of Workforce Services.

Prepared by M. Moore, Research & Planning, WY DWS, 7/31/19.

### Average Earnings by Age and Gender with Place of Work in Natrona County in 2010

Gender	Age Group	Number	Age Percent	Gender Percent	Average Annual Wage	Average Quarters Worked	Average Annual Employers
Women	00-19	1,427	6.9	0.0	\$5,012	2.7	1.6
Women	20-24	2,512	12.2	0.0	\$12,757	3.2	1.7
Women	25-34	4,677	22.7	0.0	\$23,868	3.4	1.5
Women	35-44	3,719	18.0	0.0	\$30,762	3.6	1.4
Women	45-54	4,288	20.8	0.0	\$33,790	3.6	1.3
Women	55-64	3,087	15.0	0.0	\$34,901	3.6	1.2
Women	65-Up	865	4.2	0.0	\$17,477	3.4	1.1
Women	N/A	34	0.2	0.0	\$22,120	3.1	1.1
Women	Total	20,609	100.0	41.7	\$25,898	3.4	1.4
Men	00-19	1,417	5.5	0.0	\$5,710	2.6	1.5
Men	20-24	2,992	11.6	0.0	\$19,004	3.1	1.6
Men	25-34	6,650	25.8	0.0	\$36,252	3.3	1.4
Men	35-44	4,981	19.3	0.0	\$50,116	3.4	1.3
Men	45-54	5,138	19.9	0.0	\$56,943	3.5	1.3
Men	55-64	3,607	14.0	0.0	\$59,979	3.6	1.2
Men	65-Up	1,014	3.9	0.0	\$37,918	3.4	1.1
Men	N/A	15	0.1	0.0	\$35,097	2.8	1.1
Men	Total	25,814	100.0	52.2	\$42,750	3.3	1.4
N/A	N/A	3,003	100.0	0.0	\$19,438	2.0	1.1
N/A	Total	3,003	100.0	6.1	\$19,438	2.0	1.1
Total	00-19	2,844	5.8	0.0	\$5,360	2.6	1.5
Total	20-24	5,504	11.1	0.0	\$16,153	3.1	1.7
Total	25-34	11,327	22.9	0.0	\$31,138	3.3	1.5
Total	35-44	8,700	17.6	0.0	\$41,843	3.5	1.4
Total	45-54	9,426	19.1	0.0	\$46,410	3.5	1.3
Total	55-64	6,694	13.5	0.0	\$48,414	3.6	1.2
Total	65-Up	1,879	3.8	0.0	\$28,508	3.4	1.1
Total	N/A	3,052	6.2	0.0	\$19,545	2.0	1.1
Total	Total	49,426	100.0	100.0	\$34,307	3.3	1.4

Note: Persons worked at any time during the year.

County Determination: Based on county of employment in which the person made the most money in the year.

N/A: Represents persons with demographic data that is unavailable.

N/A = Nonresidents, individuals for whom demographic data are not available.

Source: Demographics of Persons Working in Wyoming by County, Industry, Age, & Gender, 2000-2018.

Research & Planning, Wyoming Department of Workforce Services.

Prepared by M. Moore, Research & Planning, WY DWS, 7/31/19.

### Average Earnings by Age and Gender with Place of Work in Natrona County in 2011

Gender	Age Group	Number	Age Percent	Gender Percent	Average Annual Wage	Average Quarters Worked	Average Annual Employers
Women	00-19	1,418	6.8	0.0	\$4,903	2.7	1.7
Women	20-24	2,560	12.3	0.0	\$12,897	3.2	1.8
Women	25-34	4,813	23.1	0.0	\$24,215	3.4	1.5
Women	35-44	3,769	18.1	0.0	\$31,888	3.6	1.4
Women	45-54	4,097	19.7	0.0	\$34,641	3.6	1.4
Women	55-64	3,227	15.5	0.0	\$36,293	3.6	1.2
Women	65-Up	914	4.4	0.0	\$19,434	3.3	1.1
Women	N/A	36	0.2	0.0	\$24,509	3.2	1.2
Women	Total	20,834	100.0	40.7	\$26,610	3.4	1.5
Men	00-19	1,555	5.8	0.0	\$5,881	2.5	1.6
Men	20-24	3,144	11.7	0.0	\$21,158	3.1	1.7
Men	25-34	6,981	25.9	0.0	\$40,546	3.3	1.5
Men	35-44	5,217	19.3	0.0	\$53,798	3.4	1.4
Men	45-54	5,163	19.1	0.0	\$59,533	3.5	1.3
Men	55-64	3,819	14.2	0.0	\$62,005	3.6	1.2
Men	65-Up	1,068	4.0	0.0	\$41,352	3.3	1.2
Men	N/A	16	0.1	0.0	\$28,278	2.1	1.1
Men	Total	26,963	100.0	52.7	\$45,550	3.3	1.4
N/A	N/A	3,377	100.0	0.0	\$22,556	2.1	1.1
N/A	Total	3,377	100.0	6.6	\$22,556	2.1	1.1
Total	00-19	2,973	5.8	0.0	\$5,415	2.6	1.6
Total	20-24	5,704	11.1	0.0	\$17,450	3.1	1.8
Total	25-34	11,794	23.0	0.0	\$33,882	3.3	1.5
Total	35-44	8,986	17.6	0.0	\$44,608	3.5	1.4
Total	45-54	9,260	18.1	0.0	\$48,520	3.5	1.3
Total	55-64	7,046	13.8	0.0	\$50,229	3.6	1.2
Total	65-Up	1,982	3.9	0.0	\$31,245	3.3	1.1
Total	N/A	3,429	6.7	0.0	\$22,603	2.1	1.1
Total	Total	51,174	100.0	100.0	\$36,322	3.3	1.4

Note: Persons worked at any time during the year.

County Determination: Based on county of employment in which the person made the most money in the year.

N/A: Represents persons with demographic data that is unavailable.

N/A = Nonresidents, individuals for whom demographic data are not available.

Source: Demographics of Persons Working in Wyoming by County, Industry, Age, & Gender, 2000-2018.

Research & Planning, Wyoming Department of Workforce Services.

Prepared by M. Moore, Research & Planning, WY DWS, 7/31/19.

### Average Earnings by Age and Gender with Place of Work in Natrona County in 2012

Gender	Age Group	Number	Age Percent	Gender Percent	Average Annual Wage	Average Quarters Worked	Average Annual Employers
Women	00-19	1,538	7.1	0.0	\$5,238	2.8	1.7
Women	20-24	2,698	12.5	0.0	\$13,433	3.2	1.8
Women	25-34	4,961	23.0	0.0	\$25,282	3.4	1.5
Women	35-44	3,920	18.2	0.0	\$32,633	3.5	1.4
Women	45-54	4,038	18.7	0.0	\$35,192	3.6	1.4
Women	55-64	3,376	15.7	0.0	\$36,300	3.6	1.2
Women	65-Up	992	4.6	0.0	\$20,999	3.3	1.1
Women	N/A	38	0.2	0.0	\$25,107	3.3	1.3
Women	Total	21,561	100.0	40.1	\$27,090	3.4	1.5
Men	00-19	1,723	6.1	0.0	\$6,458	2.6	1.6
Men	20-24	3,303	11.7	0.0	\$23,799	3.2	1.8
Men	25-34	7,405	26.2	0.0	\$43,468	3.3	1.5
Men	35-44	5,456	19.3	0.0	\$58,198	3.5	1.4
Men	45-54	5,144	18.2	0.0	\$61,760	3.5	1.3
Men	55-64	3,970	14.1	0.0	\$64,927	3.6	1.2
Men	65-Up	1,209	4.3	0.0	\$44,338	3.4	1.2
Men	N/A	13	0.0	0.0	\$26,242	2.2	1.2
Men	Total	28,223	100.0	52.5	\$48,136	3.4	1.4
N/A	N/A	3,943	100.0	0.0	\$21,594	2.0	1.1
N/A	Total	3,943	100.0	7.3	\$21,594	2.0	1.1
Total	00-19	3,261	6.1	0.0	\$5,883	2.7	1.7
Total	20-24	6,001	11.2	0.0	\$19,139	3.2	1.8
Total	25-34	12,366	23.0	0.0	\$36,172	3.4	1.5
Total	35-44	9,376	17.5	0.0	\$47,510	3.5	1.4
Total	45-54	9,182	17.1	0.0	\$50,077	3.6	1.3
Total	55-64	7,346	13.7	0.0	\$51,770	3.6	1.2
Total	65-Up	2,201	4.1	0.0	\$33,819	3.3	1.1
Total	N/A	3,994	7.4	0.0	\$21,642	2.0	1.1
Total	Total	53,727	100.0	100.0	\$37,742	3.3	1.4

Note: Persons worked at any time during the year.

County Determination: Based on county of employment in which the person made the most money in the year.

N/A: Represents persons with demographic data that is unavailable.

N/A = Nonresidents, individuals for whom demographic data are not available.

Source: Demographics of Persons Working in Wyoming by County, Industry, Age, & Gender, 2000-2018.

Research & Planning, Wyoming Department of Workforce Services.

Prepared by M. Moore, Research & Planning, WY DWS, 7/31/19.

### Average Earnings by Age and Gender with Place of Work in Natrona County in 2013

Gender	Age Group	Number	Age Percent	Gender Percent	Average Annual Wage	Average Quarters Worked	Average Annual Employers
Women	00-19	1,616	7.4	0.0	\$5,384	2.8	1.7
Women	20-24	2,722	12.5	0.0	\$13,793	3.2	1.8
Women	25-34	4,998	23.0	0.0	\$26,019	3.4	1.5
Women	35-44	3,968	18.3	0.0	\$33,203	3.6	1.4
Women	45-54	3,985	18.3	0.0	\$35,882	3.6	1.4
Women	55-64	3,354	15.4	0.0	\$37,564	3.7	1.2
Women	65-Up	1,052	4.8	0.0	\$22,870	3.4	1.1
Women	N/A	37	0.2	0.0	\$28,023	3.3	1.1
Women	Total	21,732	100.0	40.7	\$27,706	3.4	1.5
Men	00-19	1,622	5.8	0.0	\$6,793	2.7	1.7
Men	20-24	3,233	11.5	0.0	\$23,488	3.1	1.8
Men	25-34	7,481	26.7	0.0	\$45,011	3.3	1.5
Men	35-44	5,535	19.7	0.0	\$58,468	3.5	1.4
Men	45-54	4,890	17.4	0.0	\$62,655	3.5	1.3
Men	55-64	4,037	14.4	0.0	\$66,668	3.6	1.2
Men	65-Up	1,263	4.5	0.0	\$46,485	3.4	1.1
Men	N/A	8	0.0	0.0	\$30,902	2.5	1.0
Men	Total	28,069	100.0	52.5	\$49,228	3.4	1.4
N/A	N/A	3,653	100.0	0.0	\$20,706	2.1	1.1
N/A	Total	3,653	100.0	6.8	\$20,706	2.1	1.1
Total	00-19	3,238	6.1	0.0	\$6,090	2.7	1.7
Total	20-24	5,955	11.1	0.0	\$19,057	3.2	1.8
Total	25-34	12,479	23.3	0.0	\$37,404	3.4	1.5
Total	35-44	9,503	17.8	0.0	\$47,919	3.5	1.4
Total	45-54	8,875	16.6	0.0	\$50,634	3.6	1.3
Total	55-64	7,391	13.8	0.0	\$53,461	3.6	1.2
Total	65-Up	2,315	4.3	0.0	\$35,754	3.4	1.1
Total	N/A	3,698	6.9	0.0	\$20,802	2.1	1.1
Total	Total	53,454	100.0	100.0	\$38,529	3.3	1.4

Note: Persons worked at any time during the year.

County Determination: Based on county of employment in which the person made the most money in the year.

N/A: Represents persons with demographic data that is unavailable.

N/A = Nonresidents, individuals for whom demographic data are not available.

Source: Demographics of Persons Working in Wyoming by County, Industry, Age, & Gender, 2000-2018.

Research & Planning, Wyoming Department of Workforce Services.

Prepared by M. Moore, Research & Planning, WY DWS, 7/31/19.



### Average Earnings by Age and Gender with Place of Work in Natrona County in 2014

Gender	Age Group	Number	Age Percent	Gender Percent	Average Annual Wage	Average Quarters Worked	Average Annual Employers
Women	00-19	1,601	7.3	0.0	\$5,572	2.8	1.8
Women	20-24	2,667	12.2	0.0	\$14,576	3.2	1.8
Women	25-34	5,115	23.3	0.0	\$26,194	3.4	1.5
Women	35-44	4,101	18.7	0.0	\$34,141	3.6	1.5
Women	45-54	3,910	17.8	0.0	\$37,101	3.6	1.4
Women	55-64	3,396	15.5	0.0	\$38,943	3.7	1.2
Women	65-Up	1,104	5.0	0.0	\$23,439	3.4	1.1
Women	N/A	43	0.2	0.0	\$31,160	3.2	1.2
Women	Total	21,937	100.0	39.2	\$28,551	3.4	1.5
Men	00-19	1,657	5.7	0.0	\$7,339	2.7	1.7
Men	20-24	3,316	11.4	0.0	\$25,270	3.2	1.8
Men	25-34	7,935	27.3	0.0	\$47,605	3.3	1.5
Men	35-44	5,794	19.9	0.0	\$62,947	3.5	1.4
Men	45-54	4,886	16.8	0.0	\$64,843	3.5	1.3
Men	55-64	4,238	14.6	0.0	\$68,936	3.6	1.2
Men	65-Up	1,263	4.3	0.0	\$50,018	3.4	1.1
Men	N/A	11	0.0	0.0	\$42,370	2.5	1.0
Men	Total	29,100	100.0	52.0	\$51,925	3.4	1.4
N/A	N/A	4,920	100.0	0.0	\$21,041	2.0	1.1
N/A	Total	4,920	100.0	8.8	\$21,041	2.0	1.1
Total	00-19	3,258	5.8	0.0	\$6,471	2.7	1.7
Total	20-24	5,983	10.7	0.0	\$20,503	3.2	1.8
Total	25-34	13,050	23.3	0.0	\$39,213	3.4	1.5
Total	35-44	9,895	17.7	0.0	\$51,009	3.5	1.4
Total	45-54	8,796	15.7	0.0	\$52,511	3.6	1.3
Total	55-64	7,634	13.6	0.0	\$55,593	3.6	1.2
Total	65-Up	2,367	4.2	0.0	\$37,621	3.4	1.1
Total	N/A	4,974	8.9	0.0	\$21,175	2.0	1.1
Total	Total	55,957	100.0	100.0	\$40,046	3.3	1.4

Note: Persons worked at any time during the year.

County Determination: Based on county of employment in which the person made the most money in the year.

N/A: Represents persons with demographic data that is unavailable.

N/A = Nonresidents, individuals for whom demographic data are not available.

Source: Demographics of Persons Working in Wyoming by County, Industry, Age, & Gender, 2000-2018.

Research & Planning, Wyoming Department of Workforce Services.

Prepared by M. Moore, Research & Planning, WY DWS, 7/31/19.

### Average Earnings by Age and Gender with Place of Work in Natrona County in 2015

Gender	Age Group	Number	Age Percent	Gender Percent	Average Annual Wage	Average Quarters Worked	Average Annual Employers
Women	00-19	1,582	7.2	0.0	\$5,835	2.8	1.7
Women	20-24	2,534	11.6	0.0	\$15,224	3.2	1.8
Women	25-34	5,161	23.6	0.0	\$27,516	3.4	1.5
Women	35-44	4,218	19.3	0.0	\$34,673	3.6	1.4
Women	45-54	3,737	17.1	0.0	\$38,620	3.6	1.4
Women	55-64	3,421	15.7	0.0	\$39,500	3.7	1.2
Women	65-Up	1,134	5.2	0.0	\$24,178	3.4	1.1
Women	N/A	44	0.2	0.0	\$27,404	3.0	1.1
Women	Total	21,831	100.0	40.7	\$29,506	3.5	1.5
Men	00-19	1,517	5.4	0.0	\$6,492	2.7	1.6
Men	20-24	3,023	10.8	0.0	\$22,463	3.2	1.8
Men	25-34	7,510	26.9	0.0	\$42,812	3.3	1.5
Men	35-44	5,587	20.0	0.0	\$58,261	3.4	1.4
Men	45-54	4,643	16.7	0.0	\$64,054	3.5	1.3
Men	55-64	4,255	15.3	0.0	\$66,847	3.6	1.2
Men	65-Up	1,321	4.7	0.0	\$49,805	3.4	1.1
Men	N/A	11	0.0	0.0	\$44,346	2.8	1.1
Men	Total	27,867	100.0	51.9	\$49,266	3.4	1.4
N/A	N/A	3,996	100.0	0.0	\$18,341	2.0	1.1
N/A	Total	3,996	100.0	7.4	\$18,341	2.0	1.1
Total	00-19	3,099	5.8	0.0	\$6,156	2.8	1.7
Total	20-24	5,557	10.3	0.0	\$19,162	3.2	1.8
Total	25-34	12,671	23.6	0.0	\$36,582	3.4	1.5
Total	35-44	9,805	18.3	0.0	\$48,114	3.5	1.4
Total	45-54	8,380	15.6	0.0	\$52,712	3.6	1.3
Total	55-64	7,676	14.3	0.0	\$54,659	3.6	1.2
Total	65-Up	2,455	4.6	0.0	\$37,968	3.4	1.1
Total	N/A	4,051	7.5	0.0	\$18,510	2.1	1.1
Total	Total	53,694	100.0	100.0	\$38,931	3.3	1.4

Note: Persons worked at any time during the year.

County Determination: Based on county of employment in which the person made the most money in the year.

N/A: Represents persons with demographic data that is unavailable.

N/A = Nonresidents, individuals for whom demographic data are not available.

Source: Demographics of Persons Working in Wyoming by County, Industry, Age, & Gender, 2000-2018.

Research & Planning, Wyoming Department of Workforce Services.

Prepared by M. Moore, Research & Planning, WY DWS, 7/31/19.

### Average Earnings by Age and Gender with Place of Work in Natrona County in 2016

Gender	Age Group	Number	Age Percent	Gender Percent	Average Annual Wage	Average Quarters Worked	Average Annual Employers
Women	00-19	1,372	6.6	0.0	\$5,324	2.9	1.6
Women	20-24	2,310	11.1	0.0	\$15,010	3.3	1.7
Women	25-34	4,896	23.5	0.0	\$27,803	3.5	1.5
Women	35-44	4,162	20.0	0.0	\$34,732	3.6	1.4
Women	45-54	3,542	17.0	0.0	\$38,585	3.6	1.3
Women	55-64	3,401	16.3	0.0	\$37,962	3.6	1.2
Women	65-Up	1,136	5.4	0.0	\$23,900	3.4	1.1
Women	N/A	36	0.2	0.0	\$33,001	3.5	1.1
Women	Total	20,855	100.0	42.8	\$29,574	3.5	1.4
Men	00-19	1,302	5.2	0.0	\$5,542	2.6	1.4
Men	20-24	2,522	10.2	0.0	\$19,096	3.2	1.7
Men	25-34	6,397	25.8	0.0	\$37,721	3.3	1.5
Men	35-44	5,090	20.5	0.0	\$55,085	3.5	1.3
Men	45-54	4,275	17.2	0.0	\$57,947	3.5	1.3
Men	55-64	3,946	15.9	0.0	\$61,046	3.5	1.2
Men	65-Up	1,285	5.2	0.0	\$45,354	3.3	1.1
Men	N/A	12	0.0	0.0	\$30,802	2.3	1.2
Men	Total	24,829	100.0	50.9	\$45,283	3.4	1.4
N/A	N/A	3,091	100.0	0.0	\$17,848	2.1	1.1
N/A	Total	3,091	100.0	6.3	\$17,848	2.1	1.1
Total	00-19	2,674	5.5	0.0	\$5,430	2.8	1.5
Total	20-24	4,832	9.9	0.0	\$17,143	3.2	1.7
Total	25-34	11,293	23.2	0.0	\$33,421	3.4	1.5
Total	35-44	9,252	19.0	0.0	\$45,929	3.5	1.4
Total	45-54	7,817	16.0	0.0	\$49,174	3.6	1.3
Total	55-64	7,347	15.1	0.0	\$50,360	3.6	1.2
Total	65-Up	2,421	5.0	0.0	\$35,287	3.4	1.1
Total	N/A	3,139	6.4	0.0	\$18,072	2.1	1.1
Total	Total	48,775	100.0	100.0	\$36,827	3.3	1.4

Note: Persons worked at any time during the year.

County Determination: Based on county of employment in which the person made the most money in the year.

N/A: Represents persons with demographic data that is unavailable.

N/A = Nonresidents, individuals for whom demographic data are not available.

Source: Demographics of Persons Working in Wyoming by County, Industry, Age, & Gender, 2000-2018.

Research & Planning, Wyoming Department of Workforce Services.

Prepared by M. Moore, Research & Planning, WY DWS, 7/31/19.

### Average Earnings by Age and Gender with Place of Work in Natrona County in 2017

Gender	Age Group	Number	Age Percent	Gender Percent	Average Annual Wage	Average Quarters Worked	Average Annual Employers
Women	00-19	1,387	6.8	0.0	\$5,523	2.8	1.6
Women	20-24	2,230	10.9	0.0	\$14,983	3.3	1.8
Women	25-34	4,697	23.0	0.0	\$27,701	3.5	1.5
Women	35-44	4,183	20.5	0.0	\$35,550	3.6	1.4
Women	45-54	3,392	16.6	0.0	\$39,678	3.6	1.3
Women	55-64	3,350	16.4	0.0	\$39,257	3.7	1.2
Women	65-Up	1,153	5.6	0.0	\$25,156	3.5	1.1
Women	N/A	33	0.2	0.0	\$23,640	2.9	1.2
Women	Total	20,425	100.0	42.3	\$30,148	3.5	1.4
Men	00-19	1,341	5.5	0.0	\$6,286	2.7	1.5
Men	20-24	2,422	9.9	0.0	\$20,501	3.2	1.8
Men	25-34	6,262	25.6	0.0	\$41,461	3.4	1.5
Men	35-44	5,171	21.1	0.0	\$57,470	3.5	1.4
Men	45-54	4,186	17.1	0.0	\$61,492	3.5	1.3
Men	55-64	3,775	15.4	0.0	\$64,201	3.5	1.2
Men	65-Up	1,302	5.3	0.0	\$46,229	3.3	1.1
Men	N/A	9	0.0	0.0	\$36,182	2.7	1.0
Men	Total	24,468	100.0	50.7	\$48,029	3.4	1.4
N/A	N/A	3,411	100.0	0.0	\$20,099	2.1	1.1
N/A	Total	3,411	100.0	7.1	\$20,099	2.1	1.1
Total	00-19	2,728	5.6	0.0	\$5,898	2.8	1.6
Total	20-24	4,652	9.6	0.0	\$17,856	3.2	1.8
Total	25-34	10,959	22.7	0.0	\$35,563	3.4	1.5
Total	35-44	9,354	19.4	0.0	\$47,668	3.5	1.4
Total	45-54	7,578	15.7	0.0	\$51,728	3.6	1.3
Total	55-64	7,125	14.8	0.0	\$52,473	3.6	1.2
Total	65-Up	2,455	5.1	0.0	\$36,332	3.4	1.1
Total	N/A	3,453	7.1	0.0	\$20,175	2.1	1.1
Total	Total	48,304	100.0	100.0	\$38,496	3.3	1.4

Note: Persons worked at any time during the year.

County Determination: Based on county of employment in which the person made the most money in the year.

N/A: Represents persons with demographic data that is unavailable.

N/A = Nonresidents, individuals for whom demographic data are not available.

Source: Demographics of Persons Working in Wyoming by County, Industry, Age, & Gender, 2000-2018.

Research & Planning, Wyoming Department of Workforce Services.

Prepared by M. Moore, Research & Planning, WY DWS, 7/31/19.

### Average Earnings by Age and Gender with Place of Work in Natrona County in 2018

Gender	Age Group	Number	Age Percent	Gender Percent	Average Annual Wage	Average Quarters Worked	Average Annual Employers
Women	00-19	1,414	7.0	0.0	\$5,894	2.9	1.7
Women	20-24	2,198	10.9	0.0	\$15,346	3.3	1.8
Women	25-34	4,524	22.4	0.0	\$28,499	3.5	1.5
Women	35-44	4,220	20.9	0.0	\$36,890	3.6	1.4
Women	45-54	3,345	16.5	0.0	\$41,002	3.7	1.3
Women	55-64	3,300	16.3	0.0	\$39,865	3.7	1.2
Women	65-Up	1,199	5.9	0.0	\$25,562	3.4	1.1
Women	N/A	28	0.1	0.0	\$26,098	3.5	1.3
Women	Total	20,228	100.0	40.7	\$30,984	3.5	1.4
Men	00-19	1,462	5.9	0.0	\$6,957	2.7	1.6
Men	20-24	2,443	9.9	0.0	\$22,458	3.2	1.8
Men	25-34	6,090	24.6	0.0	\$45,426	3.4	1.5
Men	35-44	5,407	21.9	0.0	\$61,018	3.5	1.4
Men	45-54	4,157	16.8	0.0	\$65,657	3.5	1.3
Men	55-64	3,795	15.3	0.0	\$67,748	3.6	1.2
Men	65-Up	1,374	5.6	0.0	\$44,920	3.3	1.1
Men	N/A	11	0.0	0.0	\$32,621	2.5	1.3
Men	Total	24,739	100.0	49.8	\$51,082	3.4	1.4
N/A	N/A	4,723	100.0	0.0	\$23,200	2.1	1.1
N/A	Total	4,723	100.0	9.5	\$23,200	2.1	1.1
Total	00-19	2,876	5.8	0.0	\$6,434	2.8	1.6
Total	20-24	4,641	9.3	0.0	\$19,090	3.2	1.8
Total	25-34	10,614	21.4	0.0	\$38,211	3.4	1.5
Total	35-44	9,627	19.4	0.0	\$50,441	3.5	1.4
Total	45-54	7,502	15.1	0.0	\$54,664	3.6	1.3
Total	55-64	7,095	14.3	0.0	\$54,779	3.6	1.2
Total	65-Up	2,573	5.2	0.0	\$35,900	3.4	1.1
Total	N/A	4,762	9.6	0.0	\$23,239	2.1	1.1
Total	Total	49,690	100.0	100.0	\$40,251	3.3	1.4

Note: Persons worked at any time during the year.

County Determination: Based on county of employment in which the person made the most money in the year.

N/A: Represents persons with demographic data that is unavailable.

N/A = Nonresidents, individuals for whom demographic data are not available.

Source: Demographics of Persons Working in Wyoming by County, Industry, Age, & Gender, 2000-2018.

Research & Planning, Wyoming Department of Workforce Services.

Prepared by M. Moore, Research & Planning, WY DWS, 7/31/19.