

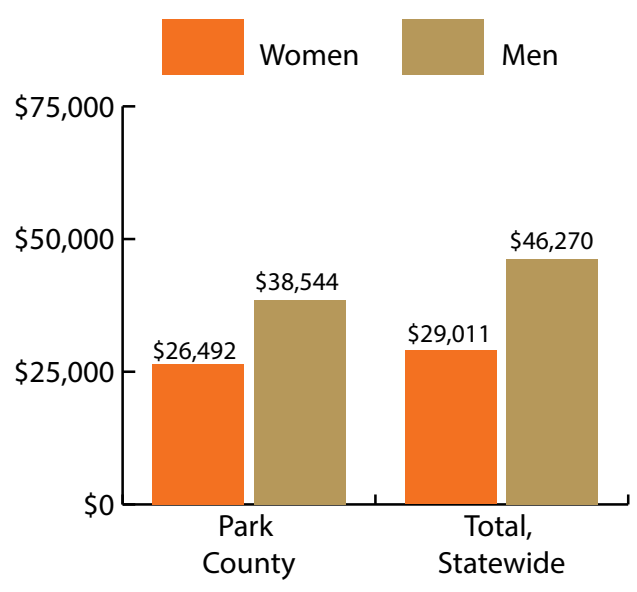
Park County at a Glance, 2017

Demographics of Persons Working in Wyoming by County, Industry, Age, & Gender, 2000-2017

Table: Total Number of Persons Working in Park County, WY, at Any Time by Gender and Age, 2016-2017

Gender	2016	2017	Change	
			N	%
Women	7,601	7,392	-209	-2.7
Men	7,769	7,432	-337	-4.3
Nonresidents	2,035	2,109	74	3.6
Total	17,405	16,933	-472	-2.7

Age	2016	2017	Change	
			N	%
00-19	1,113	1,031	-82	-7.4
20-24	1,668	1,556	-112	-6.7
25-34	3,065	2,927	-138	-4.5
35-44	2,596	2,559	-37	-1.4
45-54	2,666	2,520	-146	-5.5
55-64	2,938	2,890	-48	-1.6
65-Up	1,324	1,341	17	1.3
Nonresidents	2,035	2,109	74	3.6
Total	17,405	16,933	-472	-2.7



Women's Wages as % of Men's Wages
 Park County: 68.7%
 Total: 62.7%

Figure: Average Annual Wages by Gender, 2017

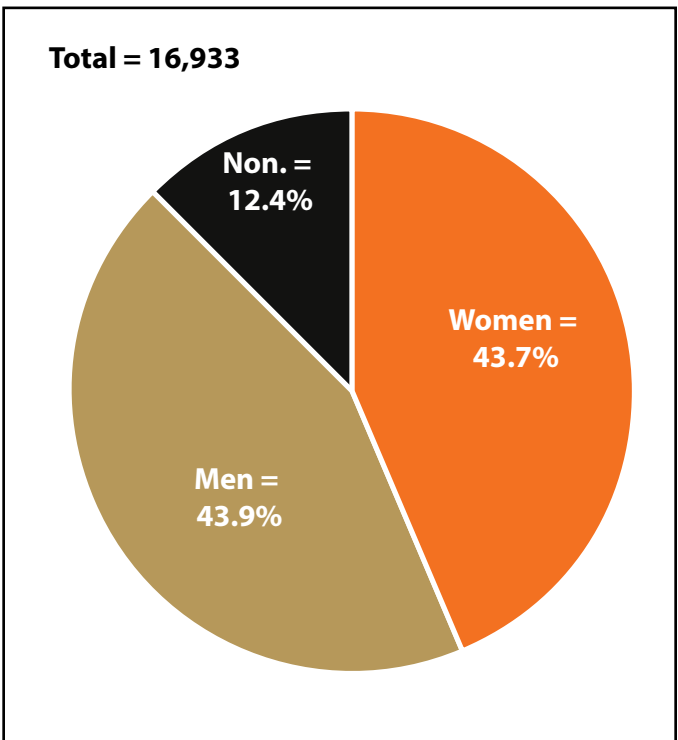


Figure: Persons Working by Gender, 2017

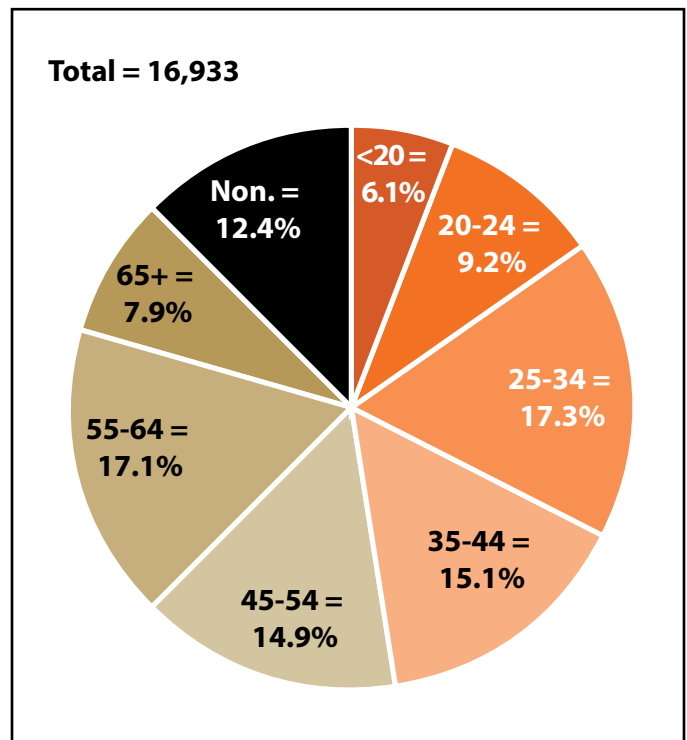


Figure: Persons Working by Age, 2017

Note: Nonresidents are individuals for whom demographic data are not available.
 Source: Demographics of Persons Working in Wyoming by County, Industry, Age, & Gender, 2000-2017. Research & Planning, Wyoming Department of Workforce Services. Prepared by M. Moore, Research & Planning, WY DWS, 6/12/18.

Persons Working in Park County by Gender and Age, 2000-2017

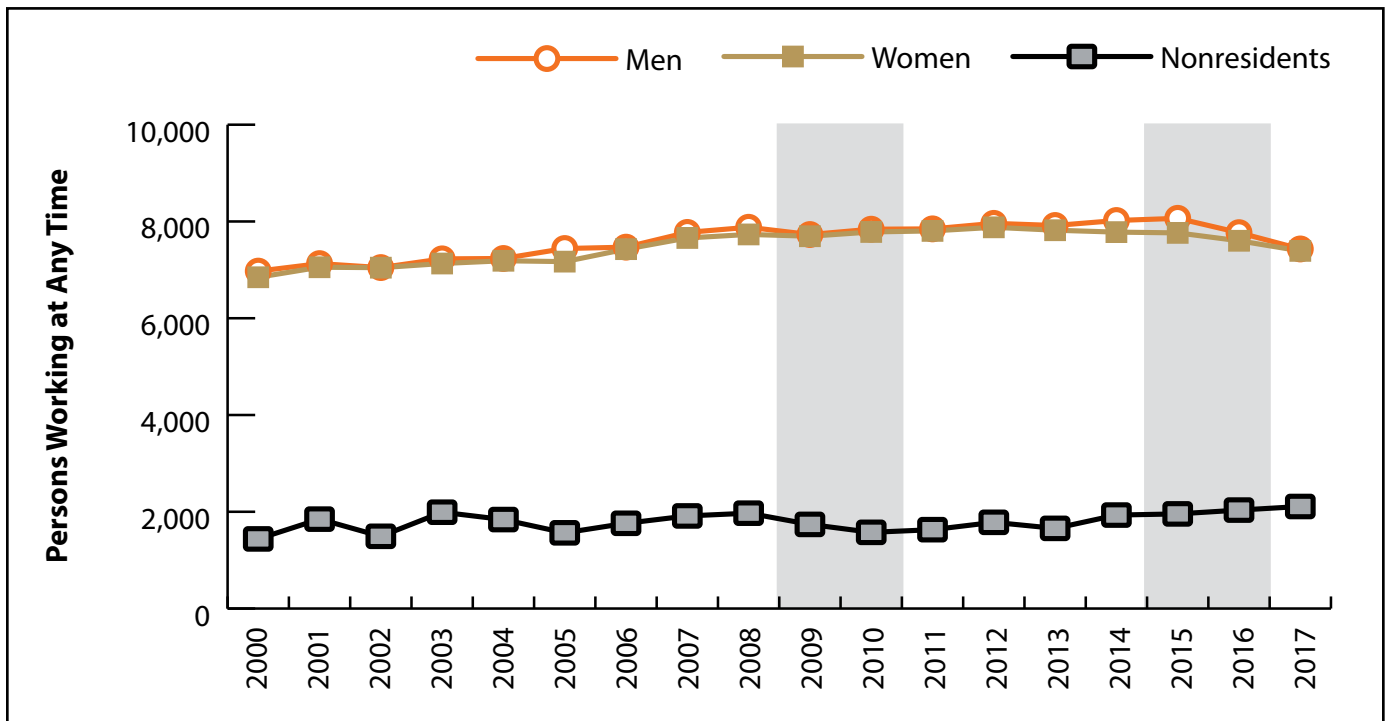


Figure: Persons Working in Park County at Any Time by Gender, 2000-2017

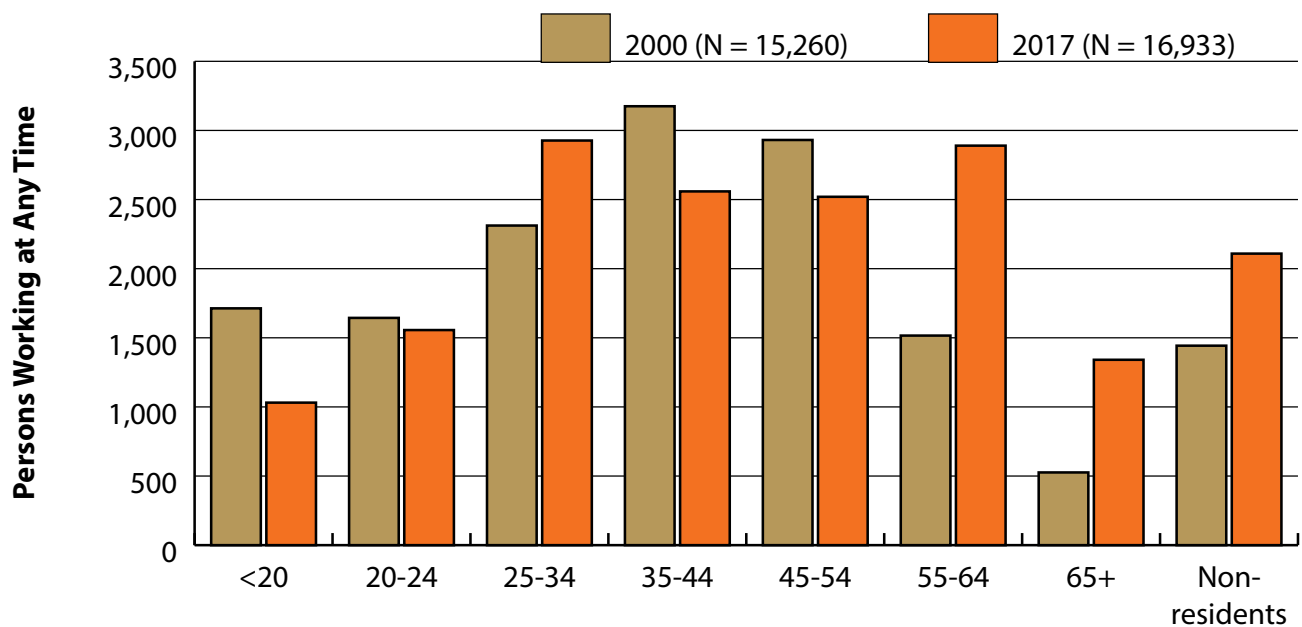


Figure: Persons Working in Park County at Any Time by Age, 2000-2017

Note: Nonresidents are individuals for whom demographic data are not available.
 Shaded areas indicate periods of economic downturn: 2009Q1-2010Q1 and 2015Q2-2016Q4.
 Source: Demographics of Persons Working in Wyoming by County, Industry, Age, & Gender, 2000-2017. Research & Planning, Wyoming Department of Workforce Services. Prepared by M. Moore, Research & Planning, WY DWS, 6/12/18.

Wages for Persons Working in Park County by Gender, 2000-2017

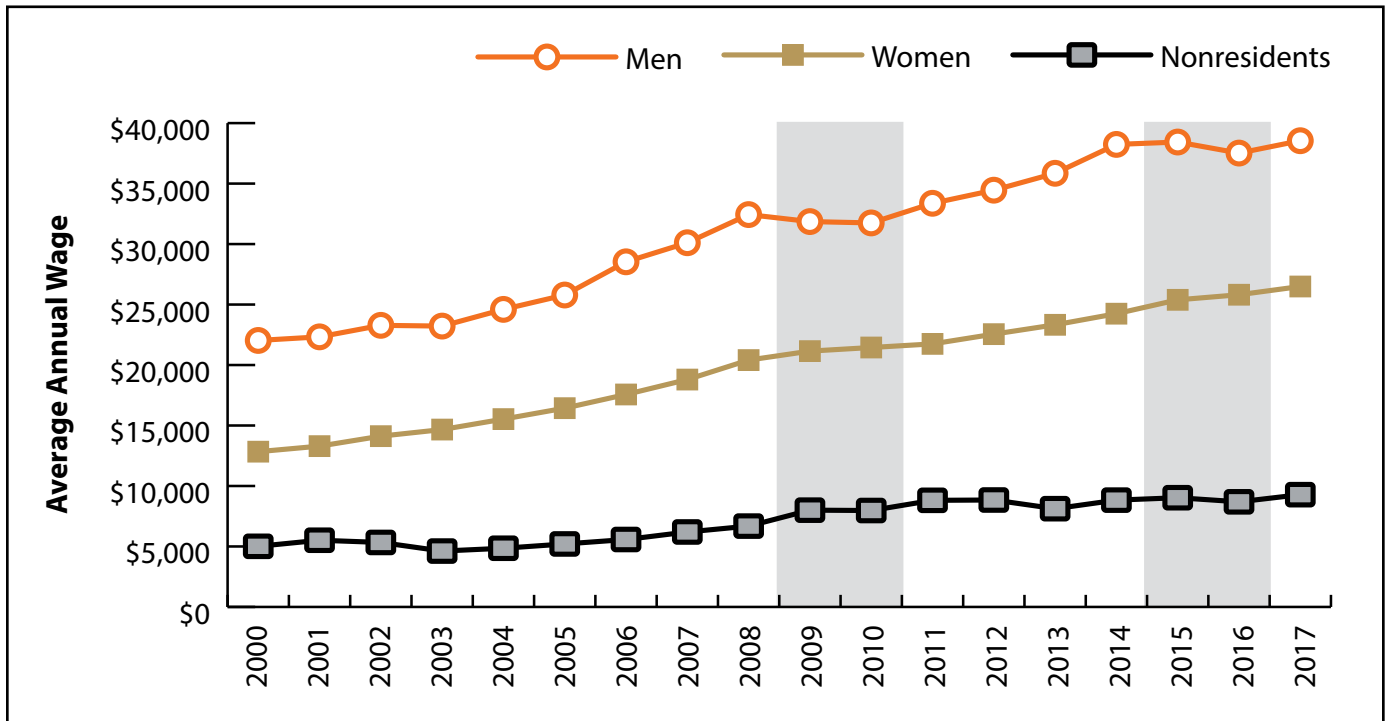


Figure: Average Annual Wage for Persons Working in Park County at Any Time by Age, 2000-2017

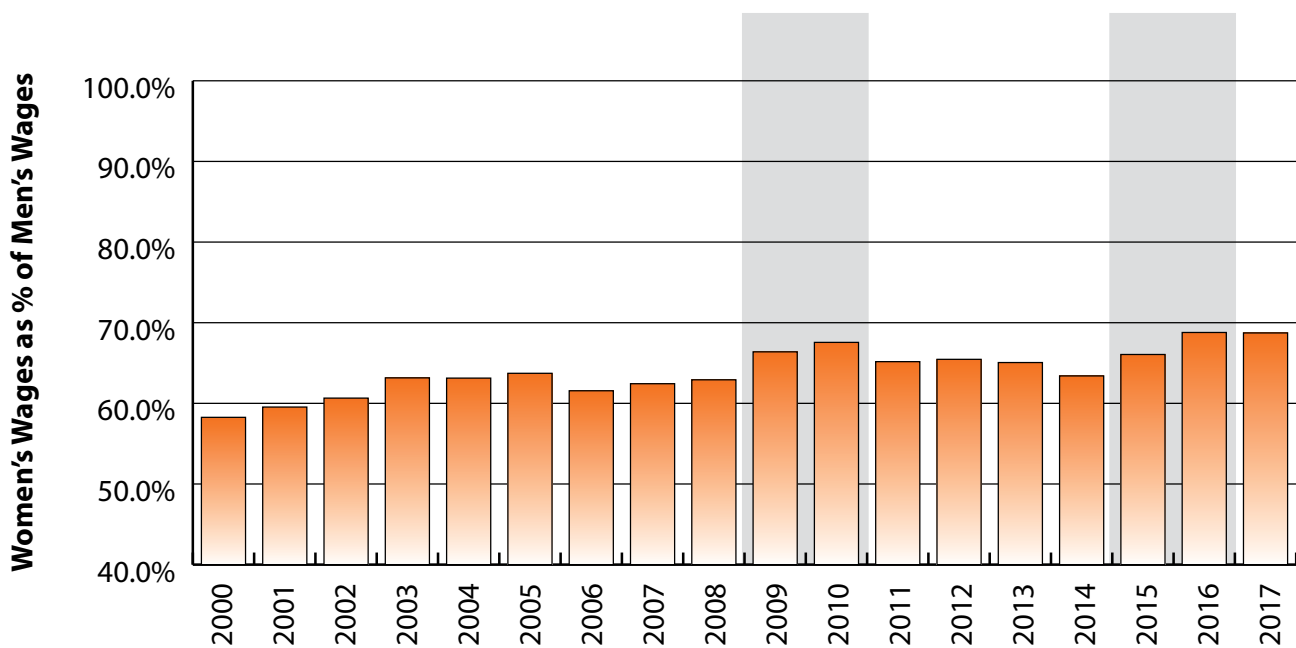


Figure: Women's Average Annual Wages as a Percent of Men's Wages for Persons Working in Park County at Any Time by Age, 2000-2017

Note: Nonresidents are individuals for whom demographic data are not available.
 Shaded areas indicate periods of economic downturn: 2009Q1-2010Q1 and 2015Q2-2016Q4.
 Source: Demographics of Persons Working in Wyoming by County, Industry, Age, & Gender, 2000-2017. Research & Planning, Wyoming Department of Workforce Services. Prepared by M. Moore, Research & Planning, WY DWS, 6/12/18.

Average Earnings by Age and Gender with Place of Work in Park County in 2000

Gender	Age Group	Number	Age Percent	Gender Percent	Average Annual Wage	Average Quarters Worked	Average Annual Employers
Women	00-19	877	12.8	0.0	\$2,866	2.5	1.7
Women	20-24	801	11.7	0.0	\$6,349	2.8	1.8
Women	25-34	1,068	15.6	0.0	\$12,442	3.2	1.6
Women	35-44	1,625	23.7	0.0	\$17,166	3.5	1.5
Women	45-54	1,490	21.8	0.0	\$18,098	3.5	1.4
Women	55-64	735	10.7	0.0	\$13,846	3.3	1.3
Women	65-Up	250	3.7	0.0	\$7,886	3.0	1.2
Women	N/A	1	0.0	0.0	\$266	1.0	1.0
Women	Total	6,847	100.0	44.9	\$12,837	3.2	1.5
Men	00-19	836	12.0	0.0	\$3,427	2.5	1.5
Men	20-24	843	12.1	0.0	\$8,436	2.8	1.7
Men	25-34	1,244	17.8	0.0	\$18,918	3.2	1.5
Men	35-44	1,550	22.2	0.0	\$29,983	3.4	1.4
Men	45-54	1,441	20.7	0.0	\$33,374	3.5	1.3
Men	55-64	781	11.2	0.0	\$27,604	3.3	1.2
Men	65-Up	276	4.0	0.0	\$14,514	2.9	1.2
Men	N/A	3	0.0	0.0	\$2,402	3.0	1.3
Men	Total	6,974	100.0	45.7	\$22,032	3.2	1.4
N/A	N/A	1,439	100.0	0.0	\$5,013	1.7	1.1
N/A	Total	1,439	100.0	9.4	\$5,013	1.7	1.1
Total	00-19	1,713	11.2	0.0	\$3,140	2.5	1.6
Total	20-24	1,644	10.8	0.0	\$7,419	2.8	1.8
Total	25-34	2,312	15.2	0.0	\$15,926	3.2	1.5
Total	35-44	3,175	20.8	0.0	\$23,423	3.5	1.4
Total	45-54	2,931	19.2	0.0	\$25,608	3.5	1.3
Total	55-64	1,516	9.9	0.0	\$20,934	3.3	1.3
Total	65-Up	526	3.4	0.0	\$11,364	2.9	1.2
Total	N/A	1,443	9.5	0.0	\$5,005	1.7	1.1
Total	Total	15,260	100.0	100.0	\$16,301	3.1	1.4

Note: Persons worked at any time during the year.

County Determination: Based on county of employment in which the person made the most money in the year.

N/A: Represents persons with demographic data that is unavailable.

N/A = Nonresidents, individuals for whom demographic data are not available.

Source: Demographics of Persons Working in Wyoming by County, Industry, Age, & Gender, 2000-2017.

Research & Planning, Wyoming Department of Workforce Services.

Prepared by M. Moore, Research & Planning, WY DWS, 6/12/18.

Average Earnings by Age and Gender with Place of Work in Park County in 2001

Gender	Age Group	Number	Age Percent	Gender Percent	Average Annual Wage	Average Quarters Worked	Average Annual Employers
Women	00-19	906	12.8	0.0	\$3,117	2.6	1.6
Women	20-24	815	11.6	0.0	\$6,725	2.8	1.8
Women	25-34	1,126	16.0	0.0	\$12,637	3.2	1.5
Women	35-44	1,544	21.9	0.0	\$17,832	3.4	1.4
Women	45-54	1,610	22.8	0.0	\$18,653	3.5	1.3
Women	55-64	786	11.1	0.0	\$14,968	3.4	1.2
Women	65-Up	263	3.7	0.0	\$7,214	3.0	1.2
Women	N/A	4	0.1	0.0	\$5,129	2.8	2.3
Women	Total	7,054	100.0	44.0	\$13,295	3.2	1.5
Men	00-19	809	11.3	0.0	\$3,533	2.4	1.6
Men	20-24	904	12.7	0.0	\$9,370	2.8	1.7
Men	25-34	1,264	17.7	0.0	\$19,854	3.2	1.5
Men	35-44	1,504	21.1	0.0	\$30,132	3.3	1.3
Men	45-54	1,506	21.1	0.0	\$33,223	3.4	1.3
Men	55-64	845	11.9	0.0	\$27,942	3.3	1.2
Men	65-Up	292	4.1	0.0	\$12,764	2.8	1.2
Men	N/A	5	0.1	0.0	\$14,549	2.4	1.0
Men	Total	7,129	100.0	44.5	\$22,329	3.1	1.4
N/A	N/A	1,848	100.0	0.0	\$5,515	1.5	1.1
N/A	Total	1,848	100.0	11.5	\$5,515	1.5	1.1
Total	00-19	1,715	10.7	0.0	\$3,313	2.5	1.6
Total	20-24	1,719	10.7	0.0	\$8,116	2.8	1.8
Total	25-34	2,390	14.9	0.0	\$16,454	3.2	1.5
Total	35-44	3,048	19.0	0.0	\$23,901	3.4	1.4
Total	45-54	3,116	19.4	0.0	\$25,695	3.5	1.3
Total	55-64	1,631	10.2	0.0	\$21,690	3.3	1.2
Total	65-Up	555	3.5	0.0	\$10,134	2.9	1.2
Total	N/A	1,857	11.6	0.0	\$5,538	1.5	1.1
Total	Total	16,031	100.0	100.0	\$16,416	3.0	1.4

Note: Persons worked at any time during the year.

County Determination: Based on county of employment in which the person made the most money in the year.

N/A: Represents persons with demographic data that is unavailable.

N/A = Nonresidents, individuals for whom demographic data are not available.

Source: Demographics of Persons Working in Wyoming by County, Industry, Age, & Gender, 2000-2017.

Research & Planning, Wyoming Department of Workforce Services.

Prepared by M. Moore, Research & Planning, WY DWS, 6/12/18.

Average Earnings by Age and Gender with Place of Work in Park County in 2002

Gender	Age Group	Number	Age Percent	Gender Percent	Average Annual Wage	Average Quarters Worked	Average Annual Employers
Women	00-19	812	11.5	0.0	\$3,003	2.6	1.6
Women	20-24	852	12.1	0.0	\$6,701	2.8	1.7
Women	25-34	1,145	16.3	0.0	\$13,279	3.2	1.5
Women	35-44	1,482	21.0	0.0	\$18,547	3.4	1.4
Women	45-54	1,613	22.9	0.0	\$20,085	3.6	1.3
Women	55-64	872	12.4	0.0	\$16,045	3.4	1.2
Women	65-Up	269	3.8	0.0	\$8,358	3.0	1.1
Women	Total	7,045	100.0	45.2	\$14,120	3.2	1.4
Men	00-19	779	11.1	0.0	\$3,345	2.5	1.5
Men	20-24	859	12.2	0.0	\$9,681	2.8	1.6
Men	25-34	1,296	18.4	0.0	\$20,466	3.2	1.4
Men	35-44	1,378	19.6	0.0	\$30,869	3.4	1.3
Men	45-54	1,511	21.4	0.0	\$34,606	3.5	1.2
Men	55-64	915	13.0	0.0	\$30,007	3.4	1.2
Men	65-Up	302	4.3	0.0	\$14,174	3.0	1.2
Men	N/A	7	0.1	0.0	\$7,267	1.6	1.0
Men	Total	7,047	100.0	45.2	\$23,281	3.2	1.4
N/A	N/A	1,493	100.0	0.0	\$5,332	1.6	1.1
N/A	Total	1,493	100.0	9.6	\$5,332	1.6	1.1
Total	00-19	1,591	10.2	0.0	\$3,171	2.5	1.6
Total	20-24	1,711	11.0	0.0	\$8,197	2.8	1.7
Total	25-34	2,441	15.7	0.0	\$17,095	3.2	1.5
Total	35-44	2,860	18.4	0.0	\$24,484	3.4	1.3
Total	45-54	3,124	20.0	0.0	\$27,108	3.5	1.3
Total	55-64	1,787	11.5	0.0	\$23,194	3.4	1.2
Total	65-Up	571	3.7	0.0	\$11,434	3.0	1.2
Total	N/A	1,500	9.6	0.0	\$5,341	1.6	1.1
Total	Total	15,585	100.0	100.0	\$17,420	3.1	1.4

Note: Persons worked at any time during the year.

County Determination: Based on county of employment in which the person made the most money in the year.

N/A: Represents persons with demographic data that is unavailable.

N/A = Nonresidents, individuals for whom demographic data are not available.

Source: Demographics of Persons Working in Wyoming by County, Industry, Age, & Gender, 2000-2017.
Research & Planning, Wyoming Department of Workforce Services.

Prepared by M. Moore, Research & Planning, WY DWS, 6/12/18.

Average Earnings by Age and Gender with Place of Work in Park County in 2003

Gender	Age Group	Number	Age Percent	Gender Percent	Average Annual Wage	Average Quarters Worked	Average Annual Employers
Women	00-19	821	11.5	0.0	\$3,081	2.5	1.7
Women	20-24	869	12.2	0.0	\$7,442	2.9	1.7
Women	25-34	1,128	15.8	0.0	\$13,769	3.2	1.5
Women	35-44	1,411	19.8	0.0	\$18,702	3.4	1.4
Women	45-54	1,646	23.1	0.0	\$21,106	3.5	1.3
Women	55-64	932	13.1	0.0	\$17,422	3.5	1.2
Women	65-Up	322	4.5	0.0	\$8,307	3.0	1.1
Women	N/A	2	0.0	0.0	\$956	1.5	1.0
Women	Total	7,131	100.0	43.6	\$14,665	3.2	1.4
Men	00-19	763	10.6	0.0	\$3,185	2.4	1.5
Men	20-24	864	12.0	0.0	\$9,718	2.8	1.7
Men	25-34	1,327	18.4	0.0	\$19,898	3.2	1.5
Men	35-44	1,373	19.0	0.0	\$30,341	3.4	1.3
Men	45-54	1,533	21.2	0.0	\$35,487	3.5	1.2
Men	55-64	972	13.4	0.0	\$30,098	3.4	1.2
Men	65-Up	388	5.4	0.0	\$13,493	2.9	1.2
Men	N/A	7	0.1	0.0	\$3,128	2.0	1.3
Men	Total	7,227	100.0	44.2	\$23,219	3.2	1.4
N/A	N/A	1,991	100.0	0.0	\$4,620	1.7	1.1
N/A	Total	1,991	100.0	12.2	\$4,620	1.7	1.1
Total	00-19	1,584	9.7	0.0	\$3,131	2.5	1.6
Total	20-24	1,733	10.6	0.0	\$8,577	2.8	1.7
Total	25-34	2,455	15.0	0.0	\$17,082	3.2	1.5
Total	35-44	2,784	17.0	0.0	\$24,442	3.4	1.4
Total	45-54	3,179	19.4	0.0	\$28,041	3.5	1.3
Total	55-64	1,904	11.6	0.0	\$23,893	3.4	1.2
Total	65-Up	710	4.3	0.0	\$11,141	3.0	1.2
Total	N/A	2,000	12.2	0.0	\$4,611	1.7	1.1
Total	Total	16,349	100.0	100.0	\$17,223	3.0	1.4

Note: Persons worked at any time during the year.

County Determination: Based on county of employment in which the person made the most money in the year.

N/A: Represents persons with demographic data that is unavailable.

N/A = Nonresidents, individuals for whom demographic data are not available.

Source: Demographics of Persons Working in Wyoming by County, Industry, Age, & Gender, 2000-2017.

Research & Planning, Wyoming Department of Workforce Services.

Prepared by M. Moore, Research & Planning, WY DWS, 6/12/18.

Average Earnings by Age and Gender with Place of Work in Park County in 2004

Gender	Age Group	Number	Age Percent	Gender Percent	Average Annual Wage	Average Quarters Worked	Average Annual Employers
Women	00-19	810	11.3	0.0	\$2,970	2.5	1.6
Women	20-24	912	12.7	0.0	\$7,716	2.9	1.8
Women	25-34	1,086	15.1	0.0	\$15,001	3.3	1.5
Women	35-44	1,371	19.1	0.0	\$19,466	3.5	1.4
Women	45-54	1,672	23.3	0.0	\$22,536	3.5	1.3
Women	55-64	1,021	14.2	0.0	\$18,448	3.4	1.2
Women	65-Up	314	4.4	0.0	\$8,559	3.0	1.1
Women	N/A	2	0.0	0.0	\$1,460	1.5	1.0
Women	Total	7,188	100.0	44.2	\$15,530	3.3	1.4
Men	00-19	759	10.5	0.0	\$3,545	2.5	1.5
Men	20-24	884	12.2	0.0	\$11,096	2.9	1.7
Men	25-34	1,308	18.1	0.0	\$20,605	3.3	1.5
Men	35-44	1,329	18.4	0.0	\$32,050	3.4	1.3
Men	45-54	1,541	21.3	0.0	\$37,485	3.5	1.3
Men	55-64	999	13.8	0.0	\$32,092	3.4	1.2
Men	65-Up	411	5.7	0.0	\$14,811	3.0	1.2
Men	N/A	4	0.1	0.0	\$5,939	1.8	1.0
Men	Total	7,235	100.0	44.5	\$24,600	3.2	1.4
N/A	N/A	1,839	100.0	0.0	\$4,853	1.8	1.1
N/A	Total	1,839	100.0	11.3	\$4,853	1.8	1.1
Total	00-19	1,569	9.6	0.0	\$3,248	2.5	1.6
Total	20-24	1,796	11.0	0.0	\$9,379	2.9	1.7
Total	25-34	2,394	14.7	0.0	\$18,063	3.3	1.5
Total	35-44	2,700	16.6	0.0	\$25,660	3.4	1.3
Total	45-54	3,213	19.8	0.0	\$29,706	3.5	1.3
Total	55-64	2,020	12.4	0.0	\$25,195	3.4	1.2
Total	65-Up	725	4.5	0.0	\$12,103	3.0	1.1
Total	N/A	1,845	11.3	0.0	\$4,852	1.8	1.1
Total	Total	16,262	100.0	100.0	\$18,358	3.1	1.4

Note: Persons worked at any time during the year.

County Determination: Based on county of employment in which the person made the most money in the year.

N/A: Represents persons with demographic data that is unavailable.

N/A = Nonresidents, individuals for whom demographic data are not available.

Source: Demographics of Persons Working in Wyoming by County, Industry, Age, & Gender, 2000-2017.

Research & Planning, Wyoming Department of Workforce Services.

Prepared by M. Moore, Research & Planning, WY DWS, 6/12/18.

Average Earnings by Age and Gender with Place of Work in Park County in 2005

Gender	Age Group	Number	Age Percent	Gender Percent	Average Annual Wage	Average Quarters Worked	Average Annual Employers
Women	00-19	730	10.2	0.0	\$3,260	2.6	1.6
Women	20-24	910	12.7	0.0	\$7,803	2.9	1.8
Women	25-34	1,133	15.8	0.0	\$15,700	3.3	1.5
Women	35-44	1,297	18.1	0.0	\$20,356	3.5	1.4
Women	45-54	1,717	23.9	0.0	\$23,346	3.6	1.3
Women	55-64	1,049	14.6	0.0	\$19,871	3.5	1.2
Women	65-Up	332	4.6	0.0	\$9,626	3.0	1.1
Women	N/A	2	0.0	0.0	\$17,654	2.5	1.0
Women	Total	7,170	100.0	44.3	\$16,434	3.3	1.4
Men	00-19	798	10.7	0.0	\$3,812	2.5	1.5
Men	20-24	924	12.4	0.0	\$11,489	3.0	1.7
Men	25-34	1,300	17.5	0.0	\$22,401	3.3	1.5
Men	35-44	1,290	17.3	0.0	\$34,032	3.5	1.3
Men	45-54	1,600	21.5	0.0	\$38,374	3.5	1.2
Men	55-64	1,080	14.5	0.0	\$33,723	3.4	1.2
Men	65-Up	444	6.0	0.0	\$16,613	3.0	1.2
Men	N/A	5	0.1	0.0	\$2,386	1.4	1.0
Men	Total	7,441	100.0	46.0	\$25,788	3.2	1.4
N/A	N/A	1,565	100.0	0.0	\$5,208	1.9	1.1
N/A	Total	1,565	100.0	9.7	\$5,208	1.9	1.1
Total	00-19	1,528	9.4	0.0	\$3,548	2.6	1.6
Total	20-24	1,834	11.3	0.0	\$9,660	2.9	1.7
Total	25-34	2,433	15.0	0.0	\$19,280	3.3	1.5
Total	35-44	2,587	16.0	0.0	\$27,176	3.5	1.4
Total	45-54	3,317	20.5	0.0	\$30,595	3.6	1.3
Total	55-64	2,129	13.2	0.0	\$26,898	3.4	1.2
Total	65-Up	776	4.8	0.0	\$13,624	3.0	1.1
Total	N/A	1,572	9.7	0.0	\$5,215	1.9	1.1
Total	Total	16,176	100.0	100.0	\$19,651	3.1	1.4

Note: Persons worked at any time during the year.

County Determination: Based on county of employment in which the person made the most money in the year.

N/A: Represents persons with demographic data that is unavailable.

N/A = Nonresidents, individuals for whom demographic data are not available.

Source: Demographics of Persons Working in Wyoming by County, Industry, Age, & Gender, 2000-2017.

Research & Planning, Wyoming Department of Workforce Services.

Prepared by M. Moore, Research & Planning, WY DWS, 6/12/18.

Average Earnings by Age and Gender with Place of Work in Park County in 2006

Gender	Age Group	Number	Age Percent	Gender Percent	Average Annual Wage	Average Quarters Worked	Average Annual Employers
Women	00-19	772	10.4	0.0	\$3,312	2.6	1.7
Women	20-24	914	12.3	0.0	\$8,505	3.0	1.8
Women	25-34	1,202	16.2	0.0	\$16,671	3.3	1.5
Women	35-44	1,299	17.5	0.0	\$21,715	3.5	1.5
Women	45-54	1,751	23.6	0.0	\$25,155	3.6	1.3
Women	55-64	1,120	15.1	0.0	\$21,396	3.5	1.2
Women	65-Up	367	4.9	0.0	\$10,530	3.1	1.2
Women	N/A	3	0.0	0.0	\$6,167	2.0	2.3
Women	Total	7,428	100.0	44.6	\$17,565	3.3	1.4
Men	00-19	787	10.5	0.0	\$3,910	2.5	1.5
Men	20-24	873	11.7	0.0	\$12,226	2.9	1.7
Men	25-34	1,343	18.0	0.0	\$25,268	3.3	1.5
Men	35-44	1,283	17.2	0.0	\$36,415	3.5	1.3
Men	45-54	1,599	21.4	0.0	\$43,941	3.5	1.2
Men	55-64	1,125	15.1	0.0	\$35,143	3.5	1.2
Men	65-Up	457	6.1	0.0	\$19,494	3.1	1.1
Men	N/A	2	0.0	0.0	\$1,261	1.0	1.0
Men	Total	7,469	100.0	44.8	\$28,533	3.3	1.4
N/A	N/A	1,762	100.0	0.0	\$5,576	1.8	1.1
N/A	Total	1,762	100.0	10.6	\$5,576	1.8	1.1
Total	00-19	1,559	9.4	0.0	\$3,614	2.6	1.6
Total	20-24	1,787	10.7	0.0	\$10,323	2.9	1.8
Total	25-34	2,545	15.3	0.0	\$21,208	3.3	1.5
Total	35-44	2,582	15.5	0.0	\$29,020	3.5	1.4
Total	45-54	3,350	20.1	0.0	\$34,122	3.6	1.3
Total	55-64	2,245	13.5	0.0	\$28,285	3.5	1.2
Total	65-Up	824	4.9	0.0	\$15,501	3.1	1.2
Total	N/A	1,767	10.6	0.0	\$5,572	1.8	1.1
Total	Total	16,659	100.0	100.0	\$21,214	3.1	1.4

Note: Persons worked at any time during the year.

County Determination: Based on county of employment in which the person made the most money in the year.

N/A: Represents persons with demographic data that is unavailable.

N/A = Nonresidents, individuals for whom demographic data are not available.

Source: Demographics of Persons Working in Wyoming by County, Industry, Age, & Gender, 2000-2017.

Research & Planning, Wyoming Department of Workforce Services.

Prepared by M. Moore, Research & Planning, WY DWS, 6/12/18.

Average Earnings by Age and Gender with Place of Work in Park County in 2007

Gender	Age Group	Number	Age Percent	Gender Percent	Average Annual Wage	Average Quarters Worked	Average Annual Employers
Women	00-19	784	10.2	0.0	\$3,712	2.7	1.6
Women	20-24	951	12.4	0.0	\$8,737	2.9	1.7
Women	25-34	1,292	16.9	0.0	\$17,350	3.2	1.5
Women	35-44	1,274	16.6	0.0	\$22,983	3.5	1.4
Women	45-54	1,773	23.1	0.0	\$26,963	3.6	1.3
Women	55-64	1,181	15.4	0.0	\$24,255	3.5	1.2
Women	65-Up	403	5.3	0.0	\$11,444	3.1	1.2
Women	N/A	1	0.0	0.0	\$1,914	1.0	1.0
Women	Total	7,659	100.0	44.2	\$18,799	3.3	1.4
Men	00-19	822	10.6	0.0	\$4,506	2.6	1.6
Men	20-24	916	11.8	0.0	\$12,936	2.9	1.7
Men	25-34	1,439	18.5	0.0	\$26,709	3.3	1.5
Men	35-44	1,315	16.9	0.0	\$38,106	3.4	1.3
Men	45-54	1,596	20.5	0.0	\$47,497	3.5	1.3
Men	55-64	1,182	15.2	0.0	\$36,545	3.5	1.2
Men	65-Up	502	6.5	0.0	\$21,862	3.1	1.2
Men	N/A	2	0.0	0.0	\$1,089	1.5	1.0
Men	Total	7,774	100.0	44.8	\$30,110	3.2	1.4
N/A	N/A	1,914	100.0	0.0	\$6,198	1.8	1.1
N/A	Total	1,914	100.0	11.0	\$6,198	1.8	1.1
Total	00-19	1,606	9.3	0.0	\$4,118	2.6	1.6
Total	20-24	1,867	10.8	0.0	\$10,797	2.9	1.7
Total	25-34	2,731	15.7	0.0	\$22,281	3.3	1.5
Total	35-44	2,589	14.9	0.0	\$30,664	3.5	1.4
Total	45-54	3,369	19.4	0.0	\$36,691	3.5	1.3
Total	55-64	2,363	13.6	0.0	\$30,403	3.5	1.2
Total	65-Up	905	5.2	0.0	\$17,223	3.1	1.2
Total	N/A	1,917	11.1	0.0	\$6,190	1.8	1.1
Total	Total	17,347	100.0	100.0	\$22,478	3.1	1.4

Note: Persons worked at any time during the year.

County Determination: Based on county of employment in which the person made the most money in the year.

N/A: Represents persons with demographic data that is unavailable.

N/A = Nonresidents, individuals for whom demographic data are not available.

Source: Demographics of Persons Working in Wyoming by County, Industry, Age, & Gender, 2000-2017.

Research & Planning, Wyoming Department of Workforce Services.

Prepared by M. Moore, Research & Planning, WY DWS, 6/12/18.

Average Earnings by Age and Gender with Place of Work in Park County in 2008

Gender	Age Group	Number	Age Percent	Gender Percent	Average Annual Wage	Average Quarters Worked	Average Annual Employers
Women	00-19	745	9.6	0.0	\$3,802	2.7	1.6
Women	20-24	960	12.4	0.0	\$9,711	2.9	1.7
Women	25-34	1,321	17.1	0.0	\$19,030	3.3	1.5
Women	35-44	1,247	16.1	0.0	\$24,431	3.5	1.4
Women	45-54	1,754	22.7	0.0	\$29,317	3.6	1.3
Women	55-64	1,268	16.4	0.0	\$26,046	3.5	1.2
Women	65-Up	436	5.6	0.0	\$12,828	3.1	1.1
Women	N/A	1	0.0	0.0	\$2,500	2.0	1.0
Women	Total	7,732	100.0	44.0	\$20,409	3.3	1.4
Men	00-19	779	9.9	0.0	\$4,816	2.6	1.6
Men	20-24	986	12.5	0.0	\$13,714	2.9	1.6
Men	25-34	1,423	18.1	0.0	\$28,939	3.3	1.4
Men	35-44	1,325	16.8	0.0	\$39,847	3.5	1.3
Men	45-54	1,596	20.3	0.0	\$53,699	3.5	1.2
Men	55-64	1,256	15.9	0.0	\$38,489	3.4	1.2
Men	65-Up	514	6.5	0.0	\$20,048	3.1	1.1
Men	N/A	1	0.0	0.0	\$1,486	1.0	1.0
Men	Total	7,880	100.0	44.8	\$32,437	3.3	1.3
N/A	N/A	1,971	100.0	0.0	\$6,684	1.9	1.1
N/A	Total	1,971	100.0	11.2	\$6,684	1.9	1.1
Total	00-19	1,524	8.7	0.0	\$4,320	2.6	1.6
Total	20-24	1,946	11.1	0.0	\$11,739	2.9	1.6
Total	25-34	2,744	15.6	0.0	\$24,169	3.3	1.5
Total	35-44	2,572	14.6	0.0	\$32,373	3.5	1.4
Total	45-54	3,350	19.1	0.0	\$40,933	3.6	1.3
Total	55-64	2,524	14.4	0.0	\$32,238	3.5	1.2
Total	65-Up	950	5.4	0.0	\$16,735	3.1	1.1
Total	N/A	1,973	11.2	0.0	\$6,679	1.9	1.1
Total	Total	17,583	100.0	100.0	\$24,261	3.1	1.4

Note: Persons worked at any time during the year.

County Determination: Based on county of employment in which the person made the most money in the year.

N/A: Represents persons with demographic data that is unavailable.

N/A = Nonresidents, individuals for whom demographic data are not available.

Source: Demographics of Persons Working in Wyoming by County, Industry, Age, & Gender, 2000-2017.

Research & Planning, Wyoming Department of Workforce Services.

Prepared by M. Moore, Research & Planning, WY DWS, 6/12/18.

Average Earnings by Age and Gender with Place of Work in Park County in 2009

Gender	Age Group	Number	Age Percent	Gender Percent	Average Annual Wage	Average Quarters Worked	Average Annual Employers
Women	00-19	651	8.5	0.0	\$3,849	2.7	1.4
Women	20-24	899	11.7	0.0	\$9,863	2.9	1.6
Women	25-34	1,386	18.0	0.0	\$19,352	3.3	1.4
Women	35-44	1,240	16.1	0.0	\$25,211	3.5	1.3
Women	45-54	1,766	22.9	0.0	\$29,608	3.6	1.3
Women	55-64	1,308	17.0	0.0	\$26,852	3.6	1.2
Women	65-Up	443	5.8	0.0	\$13,262	3.2	1.1
Women	N/A	2	0.0	0.0	\$4,900	2.0	1.0
Women	Total	7,695	100.0	44.8	\$21,150	3.4	1.3
Men	00-19	614	7.9	0.0	\$4,285	2.6	1.4
Men	20-24	943	12.2	0.0	\$12,936	2.9	1.5
Men	25-34	1,484	19.2	0.0	\$27,327	3.3	1.4
Men	35-44	1,319	17.1	0.0	\$38,161	3.5	1.3
Men	45-54	1,554	20.1	0.0	\$48,823	3.6	1.2
Men	55-64	1,290	16.7	0.0	\$41,456	3.4	1.1
Men	65-Up	524	6.8	0.0	\$21,374	3.1	1.1
Men	N/A	2	0.0	0.0	\$1,188	1.0	1.0
Men	Total	7,730	100.0	45.0	\$31,859	3.3	1.3
N/A	N/A	1,739	100.0	0.0	\$8,002	2.0	1.1
N/A	Total	1,739	100.0	10.1	\$8,002	2.0	1.1
Total	00-19	1,265	7.4	0.0	\$4,060	2.6	1.4
Total	20-24	1,842	10.7	0.0	\$11,436	2.9	1.5
Total	25-34	2,870	16.7	0.0	\$23,475	3.3	1.4
Total	35-44	2,559	14.9	0.0	\$31,886	3.5	1.3
Total	45-54	3,320	19.3	0.0	\$38,602	3.6	1.2
Total	55-64	2,598	15.1	0.0	\$34,104	3.5	1.2
Total	65-Up	967	5.6	0.0	\$17,658	3.2	1.1
Total	N/A	1,743	10.2	0.0	\$7,991	2.0	1.1
Total	Total	17,164	100.0	100.0	\$24,641	3.2	1.3

Note: Persons worked at any time during the year.

County Determination: Based on county of employment in which the person made the most money in the year.

N/A: Represents persons with demographic data that is unavailable.

N/A = Nonresidents, individuals for whom demographic data are not available.

Source: Demographics of Persons Working in Wyoming by County, Industry, Age, & Gender, 2000-2017.

Research & Planning, Wyoming Department of Workforce Services.

Prepared by M. Moore, Research & Planning, WY DWS, 6/12/18.

Average Earnings by Age and Gender with Place of Work in Park County in 2010

Gender	Age Group	Number	Age Percent	Gender Percent	Average Annual Wage	Average Quarters Worked	Average Annual Employers
Women	00-19	654	8.4	0.0	\$3,649	2.5	1.4
Women	20-24	878	11.3	0.0	\$9,777	2.9	1.6
Women	25-34	1,400	18.0	0.0	\$19,985	3.3	1.4
Women	35-44	1,246	16.0	0.0	\$24,854	3.5	1.4
Women	45-54	1,740	22.4	0.0	\$29,803	3.6	1.3
Women	55-64	1,402	18.0	0.0	\$27,772	3.5	1.2
Women	65-Up	461	5.9	0.0	\$13,471	3.3	1.1
Women	N/A	2	0.0	0.0	\$7,457	4.0	1.0
Women	Total	7,783	100.0	45.3	\$21,449	3.3	1.3
Men	00-19	584	7.4	0.0	\$4,369	2.5	1.3
Men	20-24	981	12.5	0.0	\$11,862	2.8	1.4
Men	25-34	1,532	19.5	0.0	\$26,997	3.2	1.3
Men	35-44	1,333	17.0	0.0	\$38,828	3.4	1.3
Men	45-54	1,524	19.4	0.0	\$48,281	3.5	1.2
Men	55-64	1,346	17.2	0.0	\$41,855	3.4	1.2
Men	65-Up	539	6.9	0.0	\$21,671	3.2	1.1
Men	N/A	1	0.0	0.0	\$4,687	1.0	1.0
Men	Total	7,840	100.0	45.6	\$31,748	3.2	1.3
N/A	N/A	1,575	100.0	0.0	\$7,972	2.0	1.1
N/A	Total	1,575	100.0	9.2	\$7,972	2.0	1.1
Total	00-19	1,238	7.2	0.0	\$3,989	2.5	1.4
Total	20-24	1,859	10.8	0.0	\$10,877	2.9	1.5
Total	25-34	2,932	17.0	0.0	\$23,649	3.3	1.4
Total	35-44	2,579	15.0	0.0	\$32,076	3.4	1.3
Total	45-54	3,264	19.0	0.0	\$38,431	3.6	1.2
Total	55-64	2,748	16.0	0.0	\$34,670	3.5	1.2
Total	65-Up	1,000	5.8	0.0	\$17,891	3.2	1.1
Total	N/A	1,578	9.2	0.0	\$7,969	2.0	1.1
Total	Total	17,198	100.0	100.0	\$24,910	3.2	1.3

Note: Persons worked at any time during the year.

County Determination: Based on county of employment in which the person made the most money in the year.

N/A: Represents persons with demographic data that is unavailable.

N/A = Nonresidents, individuals for whom demographic data are not available.

Source: Demographics of Persons Working in Wyoming by County, Industry, Age, & Gender, 2000-2017.

Research & Planning, Wyoming Department of Workforce Services.

Prepared by M. Moore, Research & Planning, WY DWS, 6/12/18.

Average Earnings by Age and Gender with Place of Work in Park County in 2011

Gender	Age Group	Number	Age Percent	Gender Percent	Average Annual Wage	Average Quarters Worked	Average Annual Employers
Women	00-19	608	7.8	0.0	\$3,872	2.6	1.5
Women	20-24	916	11.7	0.0	\$9,529	2.9	1.5
Women	25-34	1,454	18.6	0.0	\$19,587	3.3	1.4
Women	35-44	1,252	16.0	0.0	\$25,908	3.5	1.4
Women	45-54	1,612	20.7	0.0	\$30,172	3.6	1.3
Women	55-64	1,462	18.7	0.0	\$28,757	3.6	1.2
Women	65-Up	500	6.4	0.0	\$14,112	3.2	1.1
Women	N/A	1	0.0	0.0	\$7,800	4.0	1.0
Women	Total	7,805	100.0	45.2	\$21,748	3.3	1.3
Men	00-19	568	7.2	0.0	\$4,496	2.4	1.3
Men	20-24	985	12.6	0.0	\$12,956	2.9	1.5
Men	25-34	1,554	19.8	0.0	\$29,691	3.3	1.4
Men	35-44	1,308	16.7	0.0	\$40,253	3.4	1.3
Men	45-54	1,504	19.2	0.0	\$50,192	3.5	1.2
Men	55-64	1,363	17.4	0.0	\$43,857	3.5	1.1
Men	65-Up	565	7.2	0.0	\$22,109	3.2	1.1
Men	Total	7,847	100.0	45.4	\$33,371	3.3	1.3
N/A	N/A	1,630	100.0	0.0	\$8,815	2.0	1.1
N/A	Total	1,630	100.0	9.4	\$8,815	2.0	1.1
Total	00-19	1,176	6.8	0.0	\$4,173	2.5	1.4
Total	20-24	1,901	11.0	0.0	\$11,305	2.9	1.5
Total	25-34	3,008	17.4	0.0	\$24,807	3.3	1.4
Total	35-44	2,560	14.8	0.0	\$33,237	3.5	1.3
Total	45-54	3,116	18.0	0.0	\$39,835	3.6	1.2
Total	55-64	2,825	16.3	0.0	\$36,042	3.5	1.2
Total	65-Up	1,065	6.2	0.0	\$18,355	3.2	1.1
Total	N/A	1,631	9.4	0.0	\$8,815	2.0	1.1
Total	Total	17,282	100.0	100.0	\$25,806	3.2	1.3

Note: Persons worked at any time during the year.

County Determination: Based on county of employment in which the person made the most money in the year.

N/A: Represents persons with demographic data that is unavailable.

N/A = Nonresidents, individuals for whom demographic data are not available.

Source: Demographics of Persons Working in Wyoming by County, Industry, Age, & Gender, 2000-2017.
Research & Planning, Wyoming Department of Workforce Services.

Prepared by M. Moore, Research & Planning, WY DWS, 6/12/18.

Average Earnings by Age and Gender with Place of Work in Park County in 2012

Gender	Age Group	Number	Age Percent	Gender Percent	Average Annual Wage	Average Quarters Worked	Average Annual Employers
Women	00-19	636	8.1	0.0	\$3,990	2.6	1.5
Women	20-24	893	11.3	0.0	\$9,921	2.9	1.6
Women	25-34	1,497	19.0	0.0	\$20,576	3.3	1.4
Women	35-44	1,284	16.3	0.0	\$26,975	3.5	1.4
Women	45-54	1,517	19.3	0.0	\$31,659	3.6	1.3
Women	55-64	1,501	19.1	0.0	\$29,427	3.6	1.2
Women	65-Up	550	7.0	0.0	\$15,749	3.2	1.1
Women	N/A	1	0.0	0.0	\$1,950	2.0	1.0
Women	Total	7,879	100.0	44.7	\$22,553	3.3	1.4
Men	00-19	570	7.2	0.0	\$4,421	2.4	1.4
Men	20-24	954	12.0	0.0	\$14,073	2.9	1.5
Men	25-34	1,638	20.6	0.0	\$30,266	3.3	1.4
Men	35-44	1,300	16.3	0.0	\$42,305	3.4	1.3
Men	45-54	1,476	18.5	0.0	\$49,542	3.5	1.2
Men	55-64	1,391	17.5	0.0	\$47,277	3.5	1.2
Men	65-Up	632	7.9	0.0	\$23,548	3.1	1.1
Men	Total	7,961	100.0	45.2	\$34,454	3.3	1.3
N/A	N/A	1,782	100.0	0.0	\$8,841	1.9	1.1
N/A	Total	1,782	100.0	10.1	\$8,841	1.9	1.1
Total	00-19	1,206	6.8	0.0	\$4,194	2.5	1.5
Total	20-24	1,847	10.5	0.0	\$12,065	2.9	1.6
Total	25-34	3,135	17.8	0.0	\$25,639	3.3	1.4
Total	35-44	2,584	14.7	0.0	\$34,688	3.5	1.3
Total	45-54	2,993	17.0	0.0	\$40,478	3.6	1.3
Total	55-64	2,892	16.4	0.0	\$38,013	3.5	1.2
Total	65-Up	1,182	6.7	0.0	\$19,919	3.2	1.1
Total	N/A	1,783	10.1	0.0	\$8,838	1.9	1.1
Total	Total	17,622	100.0	100.0	\$26,543	3.2	1.3

Note: Persons worked at any time during the year.

County Determination: Based on county of employment in which the person made the most money in the year.

N/A: Represents persons with demographic data that is unavailable.

N/A = Nonresidents, individuals for whom demographic data are not available.

Source: Demographics of Persons Working in Wyoming by County, Industry, Age, & Gender, 2000-2017.
Research & Planning, Wyoming Department of Workforce Services.

Prepared by M. Moore, Research & Planning, WY DWS, 6/12/18.

Average Earnings by Age and Gender with Place of Work in Park County in 2013

Gender	Age Group	Number	Age Percent	Gender Percent	Average Annual Wage	Average Quarters Worked	Average Annual Employers
Women	00-19	645	8.2	0.0	\$3,892	2.5	1.5
Women	20-24	882	11.3	0.0	\$10,231	3.0	1.7
Women	25-34	1,457	18.6	0.0	\$22,069	3.3	1.4
Women	35-44	1,222	15.6	0.0	\$28,020	3.5	1.4
Women	45-54	1,526	19.5	0.0	\$31,683	3.6	1.3
Women	55-64	1,497	19.1	0.0	\$31,159	3.6	1.2
Women	65-Up	590	7.5	0.0	\$16,025	3.2	1.1
Women	Total	7,819	100.0	45.0	\$23,325	3.3	1.4
Men	00-19	552	7.0	0.0	\$4,157	2.4	1.4
Men	20-24	919	11.6	0.0	\$14,100	2.9	1.6
Men	25-34	1,659	21.0	0.0	\$30,954	3.3	1.4
Men	35-44	1,316	16.6	0.0	\$45,224	3.5	1.3
Men	45-54	1,427	18.0	0.0	\$50,466	3.5	1.2
Men	55-64	1,403	17.7	0.0	\$50,213	3.5	1.1
Men	65-Up	641	8.1	0.0	\$23,794	3.2	1.1
Men	Total	7,917	100.0	45.5	\$35,851	3.3	1.3
N/A	N/A	1,657	100.0	0.0	\$8,123	2.0	1.1
N/A	Total	1,657	100.0	9.5	\$8,123	2.0	1.1
Total	00-19	1,197	6.9	0.0	\$4,014	2.5	1.5
Total	20-24	1,801	10.4	0.0	\$12,205	2.9	1.6
Total	25-34	3,116	17.9	0.0	\$26,799	3.3	1.4
Total	35-44	2,538	14.6	0.0	\$36,941	3.5	1.4
Total	45-54	2,953	17.0	0.0	\$40,760	3.6	1.3
Total	55-64	2,900	16.7	0.0	\$40,377	3.5	1.2
Total	65-Up	1,231	7.1	0.0	\$20,071	3.2	1.1
Total	N/A	1,657	9.5	0.0	\$8,123	2.0	1.1
Total	Total	17,393	100.0	100.0	\$27,578	3.2	1.3

Note: Persons worked at any time during the year.

County Determination: Based on county of employment in which the person made the most money in the year.

N/A: Represents persons with demographic data that is unavailable.

N/A = Nonresidents, individuals for whom demographic data are not available.

Source: Demographics of Persons Working in Wyoming by County, Industry, Age, & Gender, 2000-2017.

Research & Planning, Wyoming Department of Workforce Services.

Prepared by M. Moore, Research & Planning, WY DWS, 6/12/18.

Average Earnings by Age and Gender with Place of Work in Park County in 2014

Gender	Age Group	Number	Age Percent	Gender Percent	Average Annual Wage	Average Quarters Worked	Average Annual Employers
Women	00-19	648	8.3	0.0	\$4,111	2.6	1.6
Women	20-24	876	11.3	0.0	\$10,636	3.0	1.7
Women	25-34	1,462	18.8	0.0	\$23,069	3.4	1.5
Women	35-44	1,238	15.9	0.0	\$29,072	3.5	1.4
Women	45-54	1,439	18.5	0.0	\$33,001	3.6	1.3
Women	55-64	1,512	19.4	0.0	\$32,576	3.6	1.2
Women	65-Up	603	7.8	0.0	\$16,869	3.2	1.1
Women	N/A	2	0.0	0.0	\$3,638	1.0	1.0
Women	Total	7,780	100.0	43.9	\$24,244	3.4	1.4
Men	00-19	604	7.5	0.0	\$4,593	2.5	1.5
Men	20-24	889	11.1	0.0	\$15,549	3.0	1.7
Men	25-34	1,653	20.6	0.0	\$32,791	3.3	1.4
Men	35-44	1,318	16.4	0.0	\$49,533	3.5	1.3
Men	45-54	1,409	17.6	0.0	\$53,832	3.5	1.2
Men	55-64	1,442	18.0	0.0	\$54,244	3.5	1.2
Men	65-Up	703	8.8	0.0	\$23,506	3.0	1.1
Men	N/A	2	0.0	0.0	\$345	1.0	1.0
Men	Total	8,020	100.0	45.2	\$38,239	3.3	1.3
N/A	N/A	1,932	100.0	0.0	\$8,831	2.0	1.1
N/A	Total	1,932	100.0	10.9	\$8,831	2.0	1.1
Total	00-19	1,252	7.1	0.0	\$4,344	2.5	1.5
Total	20-24	1,765	10.0	0.0	\$13,111	3.0	1.7
Total	25-34	3,115	17.6	0.0	\$28,228	3.3	1.5
Total	35-44	2,556	14.4	0.0	\$39,623	3.5	1.4
Total	45-54	2,848	16.1	0.0	\$43,307	3.6	1.3
Total	55-64	2,954	16.7	0.0	\$43,153	3.6	1.2
Total	65-Up	1,306	7.4	0.0	\$20,442	3.1	1.1
Total	N/A	1,936	10.9	0.0	\$8,817	2.0	1.1
Total	Total	17,732	100.0	100.0	\$28,895	3.2	1.3

Note: Persons worked at any time during the year.

County Determination: Based on county of employment in which the person made the most money in the year.

N/A: Represents persons with demographic data that is unavailable.

N/A = Nonresidents, individuals for whom demographic data are not available.

Source: Demographics of Persons Working in Wyoming by County, Industry, Age, & Gender, 2000-2017.

Research & Planning, Wyoming Department of Workforce Services.

Prepared by M. Moore, Research & Planning, WY DWS, 6/12/18.

Average Earnings by Age and Gender with Place of Work in Park County in 2015

Gender	Age Group	Number	Age Percent	Gender Percent	Average Annual Wage	Average Quarters Worked	Average Annual Employers
Women	00-19	618	8.0	0.0	\$4,799	2.7	1.6
Women	20-24	894	11.5	0.0	\$11,563	3.0	1.7
Women	25-34	1,467	18.9	0.0	\$24,270	3.3	1.4
Women	35-44	1,227	15.8	0.0	\$31,041	3.5	1.4
Women	45-54	1,408	18.1	0.0	\$34,254	3.6	1.3
Women	55-64	1,530	19.7	0.0	\$33,847	3.6	1.2
Women	65-Up	618	8.0	0.0	\$16,364	3.3	1.1
Women	N/A	2	0.0	0.0	\$2,342	1.0	1.0
Women	Total	7,764	100.0	43.7	\$25,390	3.4	1.4
Men	00-19	582	7.2	0.0	\$4,524	2.5	1.5
Men	20-24	886	11.0	0.0	\$15,411	3.0	1.6
Men	25-34	1,681	20.8	0.0	\$32,644	3.3	1.5
Men	35-44	1,355	16.8	0.0	\$48,064	3.4	1.3
Men	45-54	1,380	17.1	0.0	\$54,032	3.5	1.2
Men	55-64	1,474	18.3	0.0	\$55,975	3.5	1.2
Men	65-Up	707	8.8	0.0	\$23,498	3.1	1.1
Men	Total	8,065	100.0	45.3	\$38,435	3.3	1.3
N/A	N/A	1,956	100.0	0.0	\$9,030	2.0	1.1
N/A	Total	1,956	100.0	11.0	\$9,030	2.0	1.1
Total	00-19	1,200	6.7	0.0	\$4,666	2.6	1.6
Total	20-24	1,780	10.0	0.0	\$13,478	3.0	1.7
Total	25-34	3,148	17.7	0.0	\$28,741	3.3	1.4
Total	35-44	2,582	14.5	0.0	\$39,975	3.5	1.4
Total	45-54	2,788	15.7	0.0	\$44,044	3.6	1.3
Total	55-64	3,004	16.9	0.0	\$44,705	3.5	1.2
Total	65-Up	1,325	7.5	0.0	\$20,171	3.2	1.1
Total	N/A	1,958	11.0	0.0	\$9,023	2.0	1.1
Total	Total	17,785	100.0	100.0	\$29,506	3.2	1.3

Note: Persons worked at any time during the year.

County Determination: Based on county of employment in which the person made the most money in the year.

N/A: Represents persons with demographic data that is unavailable.

N/A = Nonresidents, individuals for whom demographic data are not available.

Source: Demographics of Persons Working in Wyoming by County, Industry, Age, & Gender, 2000-2017.
Research & Planning, Wyoming Department of Workforce Services.

Prepared by M. Moore, Research & Planning, WY DWS, 6/12/18.

Average Earnings by Age and Gender with Place of Work in Park County in 2016

Gender	Age Group	Number	Age Percent	Gender Percent	Average Annual Wage	Average Quarters Worked	Average Annual Employers
Women	00-19	553	7.3	0.0	\$4,453	2.6	1.5
Women	20-24	859	11.3	0.0	\$12,218	3.0	1.7
Women	25-34	1,452	19.1	0.0	\$24,058	3.3	1.5
Women	35-44	1,262	16.6	0.0	\$31,825	3.5	1.4
Women	45-54	1,330	17.5	0.0	\$35,015	3.6	1.4
Women	55-64	1,515	19.9	0.0	\$33,379	3.6	1.3
Women	65-Up	630	8.3	0.0	\$17,456	3.2	1.2
Women	Total	7,601	100.0	43.7	\$25,811	3.4	1.4
Men	00-19	560	7.2	0.0	\$4,716	2.5	1.5
Men	20-24	809	10.4	0.0	\$15,324	3.0	1.6
Men	25-34	1,613	20.8	0.0	\$31,483	3.3	1.4
Men	35-44	1,334	17.2	0.0	\$47,904	3.5	1.4
Men	45-54	1,336	17.2	0.0	\$53,091	3.5	1.2
Men	55-64	1,423	18.3	0.0	\$51,970	3.5	1.2
Men	65-Up	694	8.9	0.0	\$24,357	3.2	1.1
Men	Total	7,769	100.0	44.6	\$37,522	3.3	1.3
N/A	N/A	2,035	100.0	0.0	\$8,691	2.0	1.1
N/A	Total	2,035	100.0	11.7	\$8,691	2.0	1.1
Total	00-19	1,113	6.4	0.0	\$4,585	2.6	1.5
Total	20-24	1,668	9.6	0.0	\$13,725	3.0	1.6
Total	25-34	3,065	17.6	0.0	\$27,966	3.3	1.5
Total	35-44	2,596	14.9	0.0	\$40,087	3.5	1.4
Total	45-54	2,666	15.3	0.0	\$44,073	3.6	1.3
Total	55-64	2,938	16.9	0.0	\$42,383	3.6	1.2
Total	65-Up	1,324	7.6	0.0	\$21,074	3.2	1.2
Total	N/A	2,035	11.7	0.0	\$8,691	2.0	1.1
Total	Total	17,405	100.0	100.0	\$29,037	3.2	1.3

Note: Persons worked at any time during the year.

County Determination: Based on county of employment in which the person made the most money in the year.

N/A: Represents persons with demographic data that is unavailable.

N/A = Nonresidents, individuals for whom demographic data are not available.

Source: Demographics of Persons Working in Wyoming by County, Industry, Age, & Gender, 2000-2017.

Research & Planning, Wyoming Department of Workforce Services.

Prepared by M. Moore, Research & Planning, WY DWS, 6/12/18.

Average Earnings by Age and Gender with Place of Work in Park County in 2017

Gender	Age Group	Number	Age Percent	Gender Percent	Average Annual Wage	Average Quarters Worked	Average Annual Employers
Women	00-19	537	7.3	0.0	\$4,572	2.6	1.5
Women	20-24	768	10.4	0.0	\$12,484	3.1	1.7
Women	25-34	1,428	19.3	0.0	\$24,885	3.4	1.5
Women	35-44	1,258	17.0	0.0	\$33,339	3.6	1.4
Women	45-54	1,265	17.1	0.0	\$35,472	3.6	1.3
Women	55-64	1,515	20.5	0.0	\$32,974	3.6	1.2
Women	65-Up	621	8.4	0.0	\$18,491	3.2	1.1
Women	Total	7,392	100.0	43.7	\$26,492	3.4	1.4
Men	00-19	494	6.6	0.0	\$5,059	2.6	1.5
Men	20-24	788	10.6	0.0	\$15,510	3.0	1.6
Men	25-34	1,499	20.2	0.0	\$32,688	3.4	1.4
Men	35-44	1,301	17.5	0.0	\$47,979	3.5	1.3
Men	45-54	1,255	16.9	0.0	\$53,896	3.6	1.3
Men	55-64	1,375	18.5	0.0	\$54,498	3.5	1.2
Men	65-Up	720	9.7	0.0	\$24,649	3.2	1.2
Men	Total	7,432	100.0	43.9	\$38,544	3.3	1.3
N/A	N/A	2,109	100.0	0.0	\$9,282	2.1	1.2
N/A	Total	2,109	100.0	12.5	\$9,282	2.1	1.2
Total	00-19	1,031	6.1	0.0	\$4,806	2.6	1.5
Total	20-24	1,556	9.2	0.0	\$14,016	3.0	1.6
Total	25-34	2,927	17.3	0.0	\$28,881	3.4	1.4
Total	35-44	2,559	15.1	0.0	\$40,782	3.5	1.3
Total	45-54	2,520	14.9	0.0	\$44,648	3.6	1.3
Total	55-64	2,890	17.1	0.0	\$43,215	3.5	1.2
Total	65-Up	1,341	7.9	0.0	\$21,797	3.2	1.1
Total	N/A	2,109	12.5	0.0	\$9,282	2.1	1.2
Total	Total	16,933	100.0	100.0	\$29,638	3.2	1.3

Note: Persons worked at any time during the year.

County Determination: Based on county of employment in which the person made the most money in the year.

N/A: Represents persons with demographic data that is unavailable.

N/A = Nonresidents, individuals for whom demographic data are not available.

Source: Demographics of Persons Working in Wyoming by County, Industry, Age, & Gender, 2000-2017.
Research & Planning, Wyoming Department of Workforce Services.

Prepared by M. Moore, Research & Planning, WY DWS, 6/12/18.