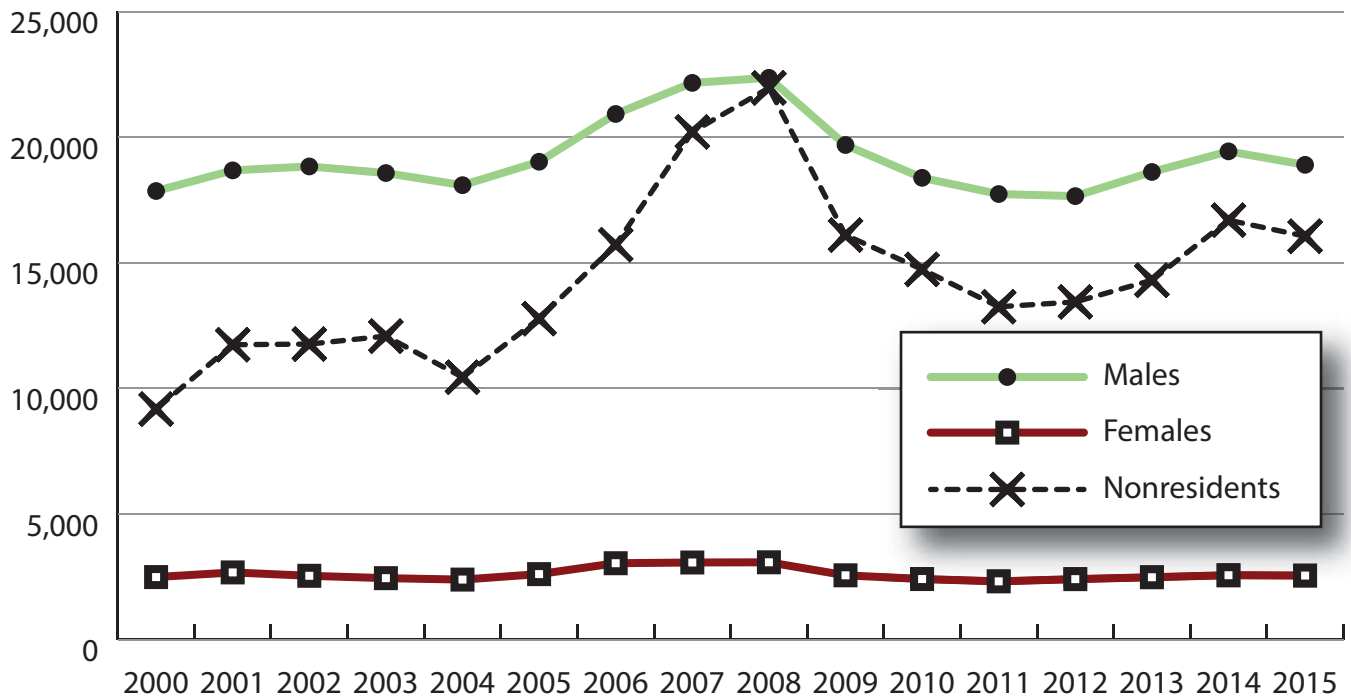
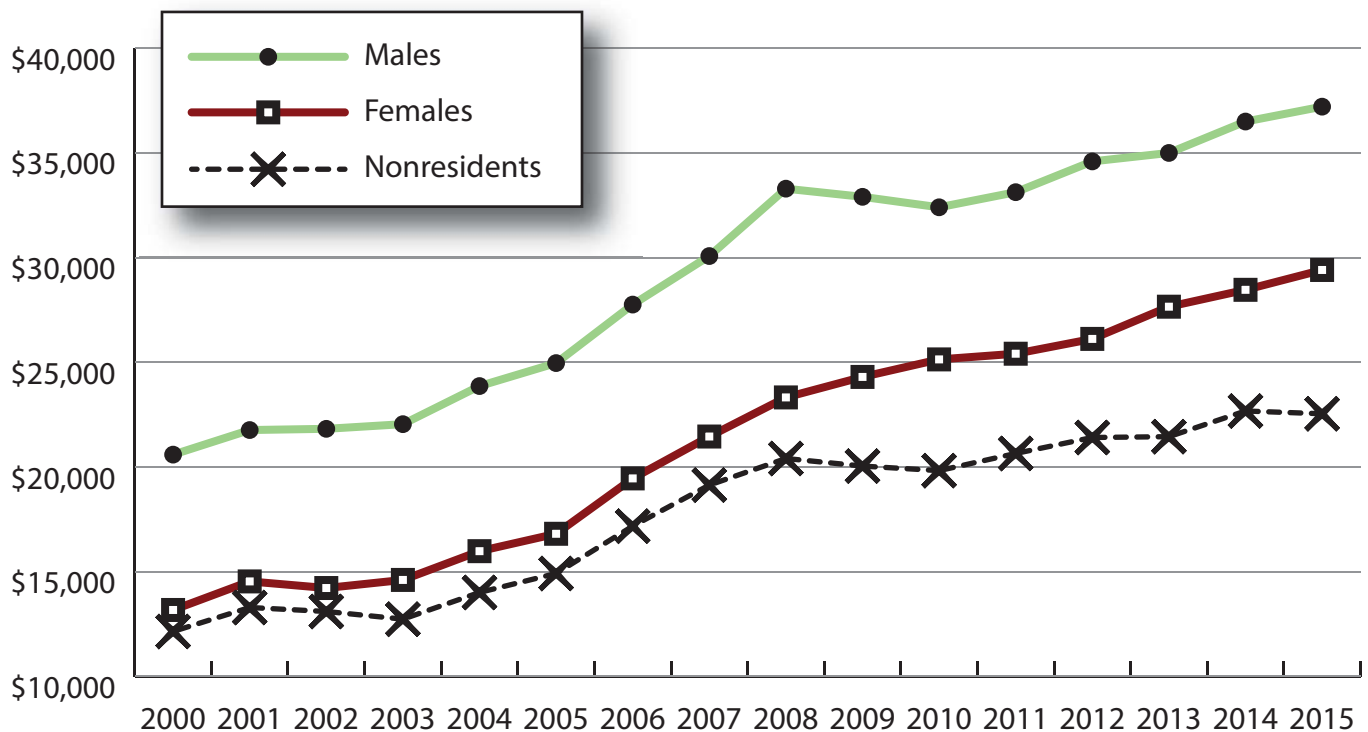


Wage Records in Wyoming: Employment and Earnings by Age and Gender in Construction, 2000-2015

Total Number of Persons Working in Construction at Any Time by Gender, 2000-2015



Average Annual Earnings for Persons Working in Construction at Any Time by Gender, 2000-2015



Wage Records in Wyoming: Employment and Earnings by Age and Gender in Construction, 2000-2015

Average Earnings by Age and Gender in the 23 - Construction Industry in 2000

Gender	Age Group	Number	Age Percent	Gender Percent	Average Annual Wage	Average Quarters Worked	Average Annual Employers
Women	00-19	273	10.9	0.0	\$4,498	2.3	1.6
Women	20-24	255	10.2	0.0	\$8,014	2.7	1.8
Women	25-34	526	21.1	0.0	\$11,314	2.9	1.7
Women	35-44	694	27.8	0.0	\$16,654	3.2	1.6
Women	45-54	468	18.8	0.0	\$16,487	3.2	1.5
Women	55-64	200	8.0	0.0	\$16,842	3.2	1.2
Women	65-Up	76	3.0	0.0	\$12,915	2.8	1.1
Women	N/A	4	0.2	0.0	\$8,275	1.8	1.0
Women	Total	2,496	100.0	8.5	\$13,173	3.0	1.6
Men	00-19	1,540	8.6	0.0	\$5,219	2.5	1.8
Men	20-24	2,919	16.3	0.0	\$12,727	2.9	2.0
Men	25-34	4,530	25.4	0.0	\$19,845	3.1	1.7
Men	35-44	4,361	24.4	0.0	\$25,410	3.2	1.5
Men	45-54	2,907	16.3	0.0	\$29,183	3.2	1.4
Men	55-64	1,235	6.9	0.0	\$24,848	3.1	1.4
Men	65-Up	354	2.0	0.0	\$17,119	2.9	1.2
Men	N/A	12	0.1	0.0	\$19,682	2.3	1.0
Men	Total	17,858	100.0	60.5	\$20,591	3.1	1.6
N/A	N/A	9,182	100.0	0.0	\$12,147	2.3	1.4
N/A	Total	9,182	100.0	31.1	\$12,147	2.3	1.4
Total	00-19	1,813	6.1	0.0	\$5,111	2.5	1.8
Total	20-24	3,174	10.7	0.0	\$12,348	2.9	2.0
Total	25-34	5,056	17.1	0.0	\$18,957	3.1	1.7
Total	35-44	5,055	17.1	0.0	\$24,208	3.2	1.5
Total	45-54	3,375	11.4	0.0	\$27,423	3.2	1.4
Total	55-64	1,435	4.9	0.0	\$23,733	3.1	1.4
Total	65-Up	430	1.5	0.0	\$16,376	2.9	1.2
Total	N/A	9,198	31.1	0.0	\$12,156	2.3	1.4
Total	Total	29,536	100.0	100.0	\$17,339	2.8	1.6

Note: Persons worked any time during the year.

Industry Determination: Based on the industry of employment in which the person made the most money in the year.

N/A: Represents persons with demographic data that are unavailable.

Wage Records in Wyoming: Employment and Earnings by Age and Gender in Construction, 2000-2015

Average Earnings by Age and Gender in the 23 - Construction Industry in 2001

Gender	Age Group	Number	Age Percent	Gender Percent	Average Annual Wage	Average Quarters Worked	Average Annual Employers
Women	00-19	292	10.9	0.0	\$5,293	2.4	1.6
Women	20-24	337	12.6	0.0	\$8,778	2.8	1.9
Women	25-34	507	18.9	0.0	\$12,434	2.8	1.6
Women	35-44	714	26.6	0.0	\$16,324	3.0	1.5
Women	45-54	514	19.2	0.0	\$20,268	3.1	1.3
Women	55-64	223	8.3	0.0	\$21,770	3.1	1.2
Women	65-Up	91	3.4	0.0	\$13,263	2.6	1.1
Women	N/A	3	0.1	0.0	\$10,282	1.7	1.3
Women	Total	2,681	100.0	8.1	\$14,537	2.9	1.5
Men	00-19	1,650	8.8	0.0	\$6,053	2.5	1.8
Men	20-24	3,112	16.7	0.0	\$13,424	2.9	1.9
Men	25-34	4,685	25.1	0.0	\$21,622	3.1	1.7
Men	35-44	4,363	23.4	0.0	\$26,541	3.1	1.5
Men	45-54	3,135	16.8	0.0	\$30,263	3.1	1.4
Men	55-64	1,298	6.9	0.0	\$27,038	3.1	1.4
Men	65-Up	426	2.3	0.0	\$17,493	2.7	1.2
Men	N/A	10	0.1	0.0	\$26,288	2.2	1.0
Men	Total	18,679	100.0	56.4	\$21,765	3.0	1.6
N/A	N/A	11,742	100.0	0.0	\$13,291	2.1	1.4
N/A	Total	11,742	100.0	35.5	\$13,291	2.1	1.4
Total	00-19	1,942	5.9	0.0	\$5,939	2.5	1.8
Total	20-24	3,449	10.4	0.0	\$12,970	2.9	1.9
Total	25-34	5,192	15.7	0.0	\$20,725	3.0	1.7
Total	35-44	5,077	15.3	0.0	\$25,104	3.1	1.5
Total	45-54	3,649	11.0	0.0	\$28,855	3.1	1.4
Total	55-64	1,521	4.6	0.0	\$26,265	3.1	1.3
Total	65-Up	517	1.6	0.0	\$16,748	2.7	1.2
Total	N/A	11,755	35.5	0.0	\$13,301	2.1	1.4
Total	Total	33,102	100.0	100.0	\$18,174	2.7	1.5

Note: Persons worked any time during the year.

Industry Determination: Based on the industry of employment in which the person made the most money in the year.

N/A: Represents persons with demographic data that are unavailable.

Wage Records in Wyoming: Employment and Earnings by Age and Gender in Construction, 2000-2015

Average Earnings by Age and Gender in the 23 - Construction Industry in 2002

Gender	Age Group	Number	Age Percent	Gender Percent	Average Annual Wage	Average Quarters Worked	Average Annual Employers
Women	00-19	245	9.6	0.0	\$4,780	2.4	1.6
Women	20-24	327	12.8	0.0	\$9,565	2.9	1.9
Women	25-34	481	18.9	0.0	\$12,100	2.8	1.6
Women	35-44	667	26.2	0.0	\$16,626	3.1	1.4
Women	45-54	520	20.4	0.0	\$19,088	3.2	1.3
Women	55-64	223	8.8	0.0	\$17,909	3.1	1.2
Women	65-Up	80	3.1	0.0	\$13,542	2.9	1.1
Women	N/A	4	0.2	0.0	\$2,537	1.3	1.0
Women	Total	2,547	100.0	7.7	\$14,221	3.0	1.5
Men	00-19	1,570	8.3	0.0	\$5,353	2.5	1.7
Men	20-24	3,185	16.9	0.0	\$13,185	2.9	1.9
Men	25-34	4,860	25.8	0.0	\$20,911	3.1	1.7
Men	35-44	4,237	22.5	0.0	\$26,249	3.1	1.5
Men	45-54	3,263	17.3	0.0	\$31,498	3.1	1.3
Men	55-64	1,305	6.9	0.0	\$28,638	3.1	1.3
Men	65-Up	403	2.1	0.0	\$18,202	2.9	1.2
Men	N/A	13	0.1	0.0	\$25,214	2.0	1.0
Men	Total	18,836	100.0	56.8	\$21,823	3.0	1.6
N/A	N/A	11,767	100.0	0.0	\$13,101	2.2	1.4
N/A	Total	11,767	100.0	35.5	\$13,101	2.2	1.4
Total	00-19	1,815	5.5	0.0	\$5,276	2.5	1.7
Total	20-24	3,512	10.6	0.0	\$12,848	2.9	1.9
Total	25-34	5,341	16.1	0.0	\$20,117	3.0	1.7
Total	35-44	4,904	14.8	0.0	\$24,940	3.1	1.5
Total	45-54	3,783	11.4	0.0	\$29,792	3.1	1.3
Total	55-64	1,528	4.6	0.0	\$27,072	3.1	1.3
Total	65-Up	483	1.5	0.0	\$17,430	2.9	1.2
Total	N/A	11,784	35.5	0.0	\$13,110	2.2	1.3
Total	Total	33,150	100.0	100.0	\$18,143	2.7	1.5

Note: Persons worked any time during the year.

Industry Determination: Based on the industry of employment in which the person made the most money in the year.

N/A: Represents persons with demographic data that are unavailable.

Wage Records in Wyoming: Employment and Earnings by Age and Gender in Construction, 2000-2015

Average Earnings by Age and Gender in the 23 - Construction Industry in 2003

Gender	Age Group	Number	Age Percent	Gender Percent	Average Annual Wage	Average Quarters Worked	Average Annual Employers
Women	00-19	229	9.3	0.0	\$4,429	2.5	1.7
Women	20-24	303	12.4	0.0	\$9,214	2.7	1.7
Women	25-34	449	18.3	0.0	\$12,935	2.8	1.5
Women	35-44	600	24.5	0.0	\$18,269	3.1	1.4
Women	45-54	534	21.8	0.0	\$18,358	3.2	1.3
Women	55-64	241	9.8	0.0	\$17,989	3.2	1.2
Women	65-Up	88	3.6	0.0	\$11,860	2.8	1.1
Women	N/A	9	0.4	0.0	\$8,311	1.9	1.1
Women	Total	2,453	100.0	7.4	\$14,608	3.0	1.5
Men	00-19	1,476	7.9	0.0	\$5,366	2.5	1.7
Men	20-24	3,073	16.5	0.0	\$13,198	2.9	1.8
Men	25-34	4,765	25.7	0.0	\$21,008	3.0	1.6
Men	35-44	4,113	22.1	0.0	\$25,925	3.0	1.5
Men	45-54	3,360	18.1	0.0	\$31,533	3.1	1.3
Men	55-64	1,352	7.3	0.0	\$30,014	3.1	1.3
Men	65-Up	420	2.3	0.0	\$17,752	2.8	1.1
Men	N/A	14	0.1	0.0	\$18,027	1.9	1.0
Men	Total	18,573	100.0	56.1	\$22,045	3.0	1.5
N/A	N/A	12,085	100.0	0.0	\$12,735	2.2	1.3
N/A	Total	12,085	100.0	36.5	\$12,735	2.2	1.3
Total	00-19	1,705	5.1	0.0	\$5,241	2.5	1.7
Total	20-24	3,376	10.2	0.0	\$12,841	2.9	1.8
Total	25-34	5,214	15.7	0.0	\$20,313	3.0	1.6
Total	35-44	4,713	14.2	0.0	\$24,950	3.0	1.5
Total	45-54	3,894	11.8	0.0	\$29,726	3.1	1.3
Total	55-64	1,593	4.8	0.0	\$28,194	3.1	1.3
Total	65-Up	508	1.5	0.0	\$16,731	2.8	1.1
Total	N/A	12,108	36.6	0.0	\$12,738	2.2	1.3
Total	Total	33,111	100.0	100.0	\$18,096	2.7	1.5

Note: Persons worked any time during the year.

Industry Determination: Based on the industry of employment in which the person made the most money in the year.

N/A: Represents persons with demographic data that are unavailable.

Wage Records in Wyoming: Employment and Earnings by Age and Gender in Construction, 2000-2015

Average Earnings by Age and Gender in the 23 - Construction Industry in 2004

Gender	Age Group	Number	Age Percent	Gender Percent	Average Annual Wage	Average Quarters Worked	Average Annual Employers
Women	00-19	204	8.5	0.0	\$4,809	2.4	1.6
Women	20-24	279	11.6	0.0	\$9,738	2.9	1.8
Women	25-34	453	18.9	0.0	\$13,805	2.9	1.5
Women	35-44	594	24.8	0.0	\$18,667	3.1	1.4
Women	45-54	531	22.2	0.0	\$20,638	3.3	1.3
Women	55-64	251	10.5	0.0	\$20,381	3.3	1.2
Women	65-Up	82	3.4	0.0	\$14,165	3.1	1.0
Women	N/A	2	0.1	0.0	\$7,061	2.0	1.0
Women	Total	2,396	100.0	7.7	\$15,981	3.0	1.4
Men	00-19	1,364	7.5	0.0	\$5,896	2.5	1.7
Men	20-24	2,968	16.4	0.0	\$14,329	3.0	1.9
Men	25-34	4,679	25.9	0.0	\$22,519	3.1	1.6
Men	35-44	3,800	21.0	0.0	\$28,129	3.1	1.5
Men	45-54	3,413	18.9	0.0	\$33,439	3.2	1.3
Men	55-64	1,425	7.9	0.0	\$32,280	3.2	1.2
Men	65-Up	436	2.4	0.0	\$19,820	2.9	1.1
Men	N/A	6	0.0	0.0	\$25,143	2.5	1.0
Men	Total	18,091	100.0	58.5	\$23,865	3.1	1.5
N/A	N/A	10,448	100.0	0.0	\$14,010	2.4	1.4
N/A	Total	10,448	100.0	33.8	\$14,010	2.4	1.4
Total	00-19	1,568	5.1	0.0	\$5,755	2.5	1.7
Total	20-24	3,247	10.5	0.0	\$13,935	3.0	1.9
Total	25-34	5,132	16.6	0.0	\$21,750	3.1	1.6
Total	35-44	4,394	14.2	0.0	\$26,850	3.1	1.5
Total	45-54	3,944	12.7	0.0	\$31,716	3.2	1.3
Total	55-64	1,676	5.4	0.0	\$30,498	3.2	1.2
Total	65-Up	518	1.7	0.0	\$18,924	2.9	1.1
Total	N/A	10,456	33.8	0.0	\$14,015	2.4	1.4
Total	Total	30,935	100.0	100.0	\$19,926	2.8	1.5

Note: Persons worked any time during the year.

Industry Determination: Based on the industry of employment in which the person made the most money in the year.

N/A: Represents persons with demographic data that are unavailable.

Wage Records in Wyoming: Employment and Earnings by Age and Gender in Construction, 2000-2015

Average Earnings by Age and Gender in the 23 - Construction Industry in 2005

Gender	Age Group	Number	Age Percent	Gender Percent	Average Annual Wage	Average Quarters Worked	Average Annual Employers
Women	00-19	207	7.9	0.0	\$5,556	2.4	1.6
Women	20-24	300	11.5	0.0	\$9,814	2.8	1.8
Women	25-34	554	21.2	0.0	\$14,452	2.9	1.6
Women	35-44	575	22.0	0.0	\$20,232	3.1	1.5
Women	45-54	588	22.5	0.0	\$21,133	3.3	1.4
Women	55-64	293	11.2	0.0	\$22,520	3.3	1.2
Women	65-Up	96	3.7	0.0	\$12,322	3.0	1.1
Women	N/A	1	0.0	0.0	\$3,398	1.0	1.0
Women	Total	2,614	100.0	7.6	\$16,811	3.1	1.5
Men	00-19	1,506	7.9	0.0	\$6,420	2.6	1.8
Men	20-24	3,178	16.7	0.0	\$15,153	2.9	1.8
Men	25-34	4,808	25.3	0.0	\$24,068	3.1	1.6
Men	35-44	3,873	20.4	0.0	\$29,193	3.1	1.5
Men	45-54	3,613	19.0	0.0	\$34,790	3.2	1.3
Men	55-64	1,571	8.3	0.0	\$33,363	3.1	1.3
Men	65-Up	466	2.4	0.0	\$21,259	3.0	1.1
Men	N/A	8	0.0	0.0	\$28,006	2.8	1.1
Men	Total	19,023	100.0	55.3	\$24,962	3.0	1.5
N/A	N/A	12,780	100.0	0.0	\$14,917	2.4	1.4
N/A	Total	12,780	100.0	37.1	\$14,917	2.4	1.4
Total	00-19	1,713	5.0	0.0	\$6,316	2.5	1.7
Total	20-24	3,478	10.1	0.0	\$14,693	2.9	1.8
Total	25-34	5,362	15.6	0.0	\$23,075	3.1	1.6
Total	35-44	4,448	12.9	0.0	\$28,034	3.1	1.5
Total	45-54	4,201	12.2	0.0	\$32,879	3.2	1.3
Total	55-64	1,864	5.4	0.0	\$31,659	3.2	1.3
Total	65-Up	562	1.6	0.0	\$19,732	3.0	1.1
Total	N/A	12,789	37.2	0.0	\$14,924	2.4	1.4
Total	Total	34,417	100.0	100.0	\$20,613	2.8	1.5

Note: Persons worked any time during the year.

Industry Determination: Based on the industry of employment in which the person made the most money in the year.

N/A: Represents persons with demographic data that are unavailable.

Wage Records in Wyoming: Employment and Earnings by Age and Gender in Construction, 2000-2015

Average Earnings by Age and Gender in the 23 - Construction Industry in 2006

Gender	Age Group	Number	Age Percent	Gender Percent	Average Annual Wage	Average Quarters Worked	Average Annual Employers
Women	00-19	214	7.0	0.0	\$5,813	2.5	1.8
Women	20-24	405	13.3	0.0	\$12,037	2.9	1.9
Women	25-34	662	21.7	0.0	\$17,407	3.0	1.7
Women	35-44	626	20.5	0.0	\$23,873	3.2	1.5
Women	45-54	692	22.7	0.0	\$24,460	3.3	1.4
Women	55-64	327	10.7	0.0	\$23,555	3.4	1.2
Women	65-Up	118	3.9	0.0	\$17,344	2.9	1.1
Women	N/A	3	0.1	0.0	\$6,314	1.3	1.0
Women	Total	3,047	100.0	7.7	\$19,456	3.1	1.6
Men	00-19	1,688	8.1	0.0	\$7,629	2.6	1.8
Men	20-24	3,432	16.4	0.0	\$17,313	2.9	1.8
Men	25-34	5,401	25.8	0.0	\$26,510	3.1	1.6
Men	35-44	4,179	20.0	0.0	\$31,297	3.0	1.5
Men	45-54	3,911	18.7	0.0	\$38,828	3.2	1.3
Men	55-64	1,774	8.5	0.0	\$39,382	3.2	1.3
Men	65-Up	531	2.5	0.0	\$23,767	2.9	1.2
Men	N/A	8	0.0	0.0	\$20,014	2.5	1.5
Men	Total	20,924	100.0	52.7	\$27,756	3.0	1.5
N/A	N/A	15,721	100.0	0.0	\$17,176	2.4	1.4
N/A	Total	15,721	100.0	39.6	\$17,176	2.4	1.4
Total	00-19	1,902	4.8	0.0	\$7,425	2.6	1.8
Total	20-24	3,837	9.7	0.0	\$16,756	2.9	1.8
Total	25-34	6,063	15.3	0.0	\$25,516	3.1	1.6
Total	35-44	4,805	12.1	0.0	\$30,330	3.1	1.5
Total	45-54	4,603	11.6	0.0	\$36,668	3.2	1.3
Total	55-64	2,101	5.3	0.0	\$36,919	3.2	1.3
Total	65-Up	649	1.6	0.0	\$22,599	2.9	1.1
Total	N/A	15,732	39.6	0.0	\$17,175	2.4	1.4
Total	Total	39,692	100.0	100.0	\$22,928	2.8	1.5

Note: Persons worked any time during the year.

Industry Determination: Based on the industry of employment in which the person made the most money in the year.

N/A: Represents persons with demographic data that are unavailable.

Wage Records in Wyoming: Employment and Earnings by Age and Gender in Construction, 2000-2015

Average Earnings by Age and Gender in the 23 - Construction Industry in 2007

Gender	Age Group	Number	Age Percent	Gender Percent	Average Annual Wage	Average Quarters Worked	Average Annual Employers
Women	00-19	230	7.5	0.0	\$6,724	2.4	1.5
Women	20-24	391	12.7	0.0	\$13,000	2.8	1.8
Women	25-34	659	21.4	0.0	\$20,123	3.2	1.7
Women	35-44	614	20.0	0.0	\$24,023	3.2	1.5
Women	45-54	713	23.2	0.0	\$27,775	3.3	1.4
Women	55-64	346	11.2	0.0	\$25,430	3.3	1.2
Women	65-Up	121	3.9	0.0	\$22,679	3.1	1.1
Women	N/A	2	0.1	0.0	\$4,671	1.5	1.0
Women	Total	3,076	100.0	6.8	\$21,455	3.1	1.5
Men	00-19	1,755	7.9	0.0	\$7,698	2.6	1.8
Men	20-24	3,544	16.0	0.0	\$18,944	2.9	1.8
Men	25-34	5,834	26.3	0.0	\$28,920	3.0	1.5
Men	35-44	4,397	19.8	0.0	\$34,108	3.0	1.4
Men	45-54	4,132	18.6	0.0	\$40,448	3.1	1.3
Men	55-64	1,917	8.7	0.0	\$44,489	3.2	1.3
Men	65-Up	569	2.6	0.0	\$25,236	2.9	1.2
Men	N/A	13	0.1	0.0	\$25,915	1.9	1.3
Men	Total	22,161	100.0	48.8	\$30,073	3.0	1.5
N/A	N/A	20,209	100.0	0.0	\$19,137	2.3	1.3
N/A	Total	20,209	100.0	44.5	\$19,137	2.3	1.3
Total	00-19	1,985	4.4	0.0	\$7,586	2.6	1.8
Total	20-24	3,935	8.7	0.0	\$18,353	2.9	1.8
Total	25-34	6,493	14.3	0.0	\$28,027	3.0	1.6
Total	35-44	5,011	11.0	0.0	\$32,873	3.1	1.4
Total	45-54	4,845	10.7	0.0	\$38,583	3.1	1.3
Total	55-64	2,263	5.0	0.0	\$41,575	3.2	1.2
Total	65-Up	690	1.5	0.0	\$24,788	2.9	1.2
Total	N/A	20,224	44.5	0.0	\$19,140	2.3	1.3
Total	Total	45,446	100.0	100.0	\$24,627	2.7	1.4

Note: Persons worked any time during the year.

Industry Determination: Based on the industry of employment in which the person made the most money in the year.

N/A: Represents persons with demographic data that are unavailable.

Wage Records in Wyoming: Employment and Earnings by Age and Gender in Construction, 2000-2015

Average Earnings by Age and Gender in the 23 - Construction Industry in 2008

Gender	Age Group	Number	Age Percent	Gender Percent	Average Annual Wage	Average Quarters Worked	Average Annual Employers
Women	00-19	217	7.0	0.0	\$6,237	2.4	1.5
Women	20-24	358	11.6	0.0	\$14,243	2.9	1.8
Women	25-34	680	22.0	0.0	\$20,997	3.1	1.7
Women	35-44	623	20.2	0.0	\$26,021	3.2	1.4
Women	45-54	712	23.1	0.0	\$31,361	3.3	1.3
Women	55-64	366	11.9	0.0	\$25,838	3.4	1.2
Women	65-Up	124	4.0	0.0	\$25,508	3.1	1.1
Women	N/A	4	0.1	0.0	\$9,073	1.5	1.0
Women	Total	3,084	100.0	6.5	\$23,322	3.1	1.5
Men	00-19	1,555	7.0	0.0	\$8,276	2.6	1.7
Men	20-24	3,481	15.6	0.0	\$20,492	2.9	1.7
Men	25-34	5,966	26.7	0.0	\$32,397	3.0	1.5
Men	35-44	4,617	20.6	0.0	\$36,059	3.0	1.4
Men	45-54	4,145	18.5	0.0	\$44,352	3.1	1.3
Men	55-64	1,985	8.9	0.0	\$49,823	3.2	1.2
Men	65-Up	605	2.7	0.0	\$28,811	3.0	1.2
Men	N/A	9	0.0	0.0	\$37,458	2.2	1.1
Men	Total	22,363	100.0	47.2	\$33,290	3.0	1.5
N/A	N/A	21,960	100.0	0.0	\$20,407	2.3	1.3
N/A	Total	21,960	100.0	46.3	\$20,407	2.3	1.3
Total	00-19	1,772	3.7	0.0	\$8,026	2.6	1.7
Total	20-24	3,839	8.1	0.0	\$19,909	2.9	1.7
Total	25-34	6,646	14.0	0.0	\$31,231	3.1	1.5
Total	35-44	5,240	11.1	0.0	\$34,866	3.0	1.4
Total	45-54	4,857	10.2	0.0	\$42,448	3.1	1.3
Total	55-64	2,351	5.0	0.0	\$46,089	3.2	1.2
Total	65-Up	729	1.5	0.0	\$28,249	3.0	1.1
Total	N/A	21,973	46.3	0.0	\$20,411	2.3	1.3
Total	Total	47,407	100.0	100.0	\$26,674	2.7	1.4

Note: Persons worked any time during the year.

Industry Determination: Based on the industry of employment in which the person made the most money in the year.

N/A: Represents persons with demographic data that are unavailable.

Wage Records in Wyoming: Employment and Earnings by Age and Gender in Construction, 2000-2015

Average Earnings by Age and Gender in the 23 - Construction Industry in 2009

Gender	Age Group	Number	Age Percent	Gender Percent	Average Annual Wage	Average Quarters Worked	Average Annual Employers
Women	00-19	130	5.1	0.0	\$6,496	2.7	1.4
Women	20-24	269	10.5	0.0	\$13,921	2.9	1.5
Women	25-34	548	21.4	0.0	\$22,089	3.2	1.4
Women	35-44	503	19.6	0.0	\$25,833	3.3	1.4
Women	45-54	645	25.1	0.0	\$32,009	3.4	1.3
Women	55-64	347	13.5	0.0	\$27,189	3.4	1.2
Women	65-Up	121	4.7	0.0	\$21,036	3.1	1.1
Women	N/A	3	0.1	0.0	\$14,141	2.0	1.0
Women	Total	2,566	100.0	6.7	\$24,301	3.2	1.3
Men	00-19	1,038	5.3	0.0	\$7,374	2.5	1.5
Men	20-24	2,785	14.1	0.0	\$18,573	2.9	1.5
Men	25-34	5,442	27.6	0.0	\$30,360	3.1	1.4
Men	35-44	4,087	20.8	0.0	\$35,883	3.1	1.3
Men	45-54	3,821	19.4	0.0	\$42,796	3.2	1.2
Men	55-64	1,994	10.1	0.0	\$49,473	3.2	1.2
Men	65-Up	521	2.6	0.0	\$27,568	3.0	1.1
Men	N/A	1	0.0	0.0	\$1,210	2.0	1.0
Men	Total	19,689	100.0	51.3	\$32,901	3.1	1.3
N/A	N/A	16,105	100.0	0.0	\$20,044	2.5	1.2
N/A	Total	16,105	100.0	42.0	\$20,044	2.5	1.2
Total	00-19	1,168	3.0	0.0	\$7,276	2.6	1.5
Total	20-24	3,054	8.0	0.0	\$18,164	2.9	1.5
Total	25-34	5,990	15.6	0.0	\$29,603	3.1	1.4
Total	35-44	4,590	12.0	0.0	\$34,781	3.1	1.3
Total	45-54	4,466	11.6	0.0	\$41,238	3.2	1.2
Total	55-64	2,341	6.1	0.0	\$46,170	3.3	1.2
Total	65-Up	642	1.7	0.0	\$26,337	3.0	1.1
Total	N/A	16,109	42.0	0.0	\$20,042	2.5	1.2
Total	Total	38,360	100.0	100.0	\$26,928	2.8	1.3

Note: Persons worked any time during the year.

Industry Determination: Based on the industry of employment in which the person made the most money in the year.

N/A: Represents persons with demographic data that are unavailable.

Wage Records in Wyoming: Employment and Earnings by Age and Gender in Construction, 2000-2015

Average Earnings by Age and Gender in the 23 - Construction Industry in 2010

Gender	Age Group	Number	Age Percent	Gender Percent	Average Annual Wage	Average Quarters Worked	Average Annual Employers
Women	00-19	131	5.4	0.0	\$5,563	2.5	1.4
Women	20-24	234	9.7	0.0	\$14,265	2.9	1.7
Women	25-34	542	22.4	0.0	\$24,213	3.2	1.5
Women	35-44	435	18.0	0.0	\$25,822	3.2	1.3
Women	45-54	603	24.9	0.0	\$32,795	3.5	1.3
Women	55-64	366	15.1	0.0	\$28,710	3.5	1.2
Women	65-Up	106	4.4	0.0	\$19,497	3.1	1.1
Women	N/A	1	0.0	0.0	\$11,248	4.0	1.0
Women	Total	2,418	100.0	6.8	\$25,138	3.3	1.4
Men	00-19	932	5.1	0.0	\$7,195	2.4	1.5
Men	20-24	2,408	13.1	0.0	\$18,063	2.9	1.6
Men	25-34	5,074	27.6	0.0	\$30,573	3.1	1.4
Men	35-44	3,876	21.1	0.0	\$36,072	3.1	1.3
Men	45-54	3,555	19.3	0.0	\$40,203	3.1	1.2
Men	55-64	2,053	11.2	0.0	\$45,753	3.2	1.2
Men	65-Up	482	2.6	0.0	\$27,979	3.0	1.1
Men	N/A	3	0.0	0.0	\$50,618	2.3	1.0
Men	Total	18,383	100.0	51.7	\$32,401	3.0	1.4
N/A	N/A	14,740	100.0	0.0	\$19,827	2.4	1.3
N/A	Total	14,740	100.0	41.5	\$19,827	2.4	1.3
Total	00-19	1,063	3.0	0.0	\$6,994	2.4	1.5
Total	20-24	2,642	7.4	0.0	\$17,727	2.9	1.6
Total	25-34	5,616	15.8	0.0	\$29,959	3.1	1.4
Total	35-44	4,311	12.1	0.0	\$35,038	3.1	1.3
Total	45-54	4,158	11.7	0.0	\$39,129	3.2	1.2
Total	55-64	2,419	6.8	0.0	\$43,174	3.3	1.2
Total	65-Up	588	1.7	0.0	\$26,450	3.0	1.1
Total	N/A	14,744	41.5	0.0	\$19,832	2.4	1.3
Total	Total	35,541	100.0	100.0	\$26,692	2.8	1.3

Note: Persons worked any time during the year.

Industry Determination: Based on the industry of employment in which the person made the most money in the year.

N/A: Represents persons with demographic data that are unavailable.

Wage Records in Wyoming: Employment and Earnings by Age and Gender in Construction, 2000-2015

Average Earnings by Age and Gender in the 23 - Construction Industry in 2011

Gender	Age Group	Number	Age Percent	Gender Percent	Average Annual Wage	Average Quarters Worked	Average Annual Employers
Women	00-19	112	4.8	0.0	\$6,188	2.6	1.6
Women	20-24	211	9.1	0.0	\$14,226	3.0	1.7
Women	25-34	519	22.3	0.0	\$23,000	3.2	1.5
Women	35-44	410	17.6	0.0	\$26,626	3.3	1.4
Women	45-54	559	24.0	0.0	\$33,672	3.5	1.3
Women	55-64	397	17.1	0.0	\$29,296	3.5	1.1
Women	65-Up	116	5.0	0.0	\$17,604	3.0	1.1
Women	N/A	1	0.0	0.0	\$32,420	4.0	1.0
Women	Total	2,325	100.0	7.0	\$25,409	3.3	1.4
Men	00-19	993	5.6	0.0	\$7,284	2.5	1.6
Men	20-24	2,329	13.1	0.0	\$18,749	2.9	1.6
Men	25-34	4,690	26.4	0.0	\$31,450	3.1	1.5
Men	35-44	3,680	20.7	0.0	\$37,130	3.1	1.4
Men	45-54	3,398	19.2	0.0	\$41,586	3.1	1.3
Men	55-64	2,142	12.1	0.0	\$45,223	3.2	1.2
Men	65-Up	499	2.8	0.0	\$28,232	3.0	1.1
Men	N/A	7	0.0	0.0	\$32,966	1.9	1.0
Men	Total	17,738	100.0	53.2	\$33,123	3.1	1.4
N/A	N/A	13,252	100.0	0.0	\$20,647	2.4	1.3
N/A	Total	13,252	100.0	39.8	\$20,647	2.4	1.3
Total	00-19	1,105	3.3	0.0	\$7,173	2.5	1.6
Total	20-24	2,540	7.6	0.0	\$18,373	2.9	1.6
Total	25-34	5,209	15.6	0.0	\$30,608	3.1	1.5
Total	35-44	4,090	12.3	0.0	\$36,077	3.1	1.4
Total	45-54	3,957	11.9	0.0	\$40,468	3.2	1.3
Total	55-64	2,539	7.6	0.0	\$42,733	3.3	1.2
Total	65-Up	615	1.8	0.0	\$26,227	3.0	1.1
Total	N/A	13,260	39.8	0.0	\$20,654	2.4	1.3
Total	Total	33,315	100.0	100.0	\$27,622	2.8	1.4

Note: Persons worked any time during the year.

Industry Determination: Based on the industry of employment in which the person made the most money in the year.

N/A: Represents persons with demographic data that are unavailable.

Wage Records in Wyoming: Employment and Earnings by Age and Gender in Construction, 2000-2015

Average Earnings by Age and Gender in the 23 - Construction Industry in 2012

Gender	Age Group	Number	Age Percent	Gender Percent	Average Annual Wage	Average Quarters Worked	Average Annual Employers
Women	00-19	99	4.1	0.0	\$6,067	2.6	1.5
Women	20-24	228	9.4	0.0	\$12,611	2.8	1.7
Women	25-34	516	21.4	0.0	\$24,447	3.3	1.5
Women	35-44	464	19.2	0.0	\$27,494	3.3	1.4
Women	45-54	539	22.3	0.0	\$33,909	3.4	1.3
Women	55-64	441	18.3	0.0	\$30,459	3.5	1.2
Women	65-Up	124	5.1	0.0	\$19,372	3.2	1.1
Women	N/A	3	0.1	0.0	\$28,647	3.0	1.7
Women	Total	2,414	100.0	7.2	\$26,117	3.3	1.4
Men	00-19	962	5.4	0.0	\$7,905	2.5	1.6
Men	20-24	2,433	13.8	0.0	\$18,746	2.9	1.7
Men	25-34	4,623	26.2	0.0	\$32,376	3.1	1.5
Men	35-44	3,710	21.0	0.0	\$39,175	3.1	1.4
Men	45-54	3,223	18.3	0.0	\$43,388	3.2	1.3
Men	55-64	2,156	12.2	0.0	\$48,749	3.3	1.2
Men	65-Up	544	3.1	0.0	\$32,111	3.1	1.1
Men	N/A	4	0.0	0.0	\$21,293	1.8	1.0
Men	Total	17,655	100.0	52.7	\$34,592	3.1	1.4
N/A	N/A	13,443	100.0	0.0	\$21,409	2.5	1.3
N/A	Total	13,443	100.0	40.1	\$21,409	2.5	1.3
Total	00-19	1,061	3.2	0.0	\$7,733	2.6	1.6
Total	20-24	2,661	7.9	0.0	\$18,220	2.9	1.7
Total	25-34	5,139	15.3	0.0	\$31,580	3.1	1.5
Total	35-44	4,174	12.5	0.0	\$37,877	3.2	1.4
Total	45-54	3,762	11.2	0.0	\$42,030	3.2	1.3
Total	55-64	2,597	7.7	0.0	\$45,643	3.3	1.2
Total	65-Up	668	2.0	0.0	\$29,746	3.1	1.1
Total	N/A	13,450	40.1	0.0	\$21,411	2.5	1.3
Total	Total	33,512	100.0	100.0	\$28,693	2.8	1.3

Note: Persons worked any time during the year.

Industry Determination: Based on the industry of employment in which the person made the most money in the year.

N/A: Represents persons with demographic data that are unavailable.

Wage Records in Wyoming: Employment and Earnings by Age and Gender in Construction, 2000-2015

Average Earnings by Age and Gender in the 23 - Construction Industry in 2013

Gender	Age Group	Number	Age Percent	Gender Percent	Average Annual Wage	Average Quarters Worked	Average Annual Employers
Women	00-19	111	4.5	0.0	\$4,934	2.3	1.5
Women	20-24	223	9.0	0.0	\$14,089	2.9	1.9
Women	25-34	537	21.6	0.0	\$25,599	3.2	1.5
Women	35-44	492	19.8	0.0	\$30,500	3.3	1.4
Women	45-54	556	22.3	0.0	\$34,960	3.4	1.3
Women	55-64	420	16.9	0.0	\$31,936	3.5	1.2
Women	65-Up	148	5.9	0.0	\$23,548	3.3	1.1
Women	N/A	2	0.1	0.0	\$27,447	2.5	1.0
Women	Total	2,489	100.0	7.0	\$27,655	3.3	1.4
Men	00-19	1,028	5.5	0.0	\$8,416	2.5	1.6
Men	20-24	2,618	14.1	0.0	\$19,327	2.9	1.7
Men	25-34	4,900	26.3	0.0	\$31,905	3.1	1.5
Men	35-44	3,957	21.3	0.0	\$40,216	3.1	1.4
Men	45-54	3,247	17.4	0.0	\$43,871	3.2	1.3
Men	55-64	2,291	12.3	0.0	\$50,535	3.3	1.2
Men	65-Up	570	3.1	0.0	\$32,432	3.1	1.1
Men	N/A	5	0.0	0.0	\$12,629	1.6	1.0
Men	Total	18,616	100.0	52.6	\$34,996	3.1	1.4
N/A	N/A	14,310	100.0	0.0	\$21,448	2.4	1.3
N/A	Total	14,310	100.0	40.4	\$21,448	2.4	1.3
Total	00-19	1,139	3.2	0.0	\$8,076	2.5	1.6
Total	20-24	2,841	8.0	0.0	\$18,916	2.9	1.7
Total	25-34	5,437	15.4	0.0	\$31,283	3.1	1.5
Total	35-44	4,449	12.6	0.0	\$39,141	3.1	1.4
Total	45-54	3,803	10.7	0.0	\$42,568	3.2	1.3
Total	55-64	2,711	7.7	0.0	\$47,654	3.3	1.2
Total	65-Up	718	2.0	0.0	\$30,601	3.1	1.1
Total	N/A	14,317	40.4	0.0	\$21,446	2.4	1.3
Total	Total	35,415	100.0	100.0	\$29,006	2.8	1.3

Note: Persons worked any time during the year.

Industry Determination: Based on the industry of employment in which the person made the most money in the year.

N/A: Represents persons with demographic data that are unavailable.

Wage Records in Wyoming: Employment and Earnings by Age and Gender in Construction, 2000-2015

Average Earnings by Age and Gender in the 23 - Construction Industry in 2014

Gender	Age Group	Number	Age Percent	Gender Percent	Average Annual Wage	Average Quarters Worked	Average Annual Employers
Women	00-19	119	4.6	0.0	\$6,215	2.4	1.4
Women	20-24	220	8.6	0.0	\$16,987	2.9	1.7
Women	25-34	596	23.2	0.0	\$24,907	3.2	1.5
Women	35-44	469	18.2	0.0	\$30,663	3.4	1.4
Women	45-54	559	21.8	0.0	\$34,657	3.4	1.3
Women	55-64	449	17.5	0.0	\$35,639	3.5	1.2
Women	65-Up	154	6.0	0.0	\$25,754	3.3	1.1
Women	N/A	4	0.2	0.0	\$24,992	2.3	1.0
Women	Total	2,570	100.0	6.6	\$28,461	3.3	1.4
Men	00-19	1,046	5.4	0.0	\$8,684	2.5	1.7
Men	20-24	2,811	14.5	0.0	\$21,290	2.9	1.7
Men	25-34	5,190	26.7	0.0	\$34,016	3.1	1.5
Men	35-44	4,108	21.1	0.0	\$41,133	3.1	1.4
Men	45-54	3,265	16.8	0.0	\$45,302	3.2	1.3
Men	55-64	2,394	12.3	0.0	\$51,953	3.3	1.2
Men	65-Up	620	3.2	0.0	\$36,376	3.1	1.1
Men	N/A	2	0.0	0.0	\$25,801	1.5	1.0
Men	Total	19,436	100.0	50.2	\$36,496	3.1	1.4
N/A	N/A	16,698	100.0	0.0	\$22,675	2.4	1.3
N/A	Total	16,698	100.0	43.1	\$22,675	2.4	1.3
Total	00-19	1,165	3.0	0.0	\$8,432	2.5	1.6
Total	20-24	3,031	7.8	0.0	\$20,977	2.9	1.7
Total	25-34	5,786	14.9	0.0	\$33,078	3.1	1.5
Total	35-44	4,577	11.8	0.0	\$40,060	3.1	1.4
Total	45-54	3,824	9.9	0.0	\$43,746	3.2	1.3
Total	55-64	2,843	7.3	0.0	\$49,376	3.4	1.2
Total	65-Up	774	2.0	0.0	\$34,262	3.2	1.1
Total	N/A	16,704	43.2	0.0	\$22,676	2.4	1.3
Total	Total	38,704	100.0	100.0	\$30,000	2.8	1.4

Note: Persons worked any time during the year.

Industry Determination: Based on the industry of employment in which the person made the most money in the year.

N/A: Represents persons with demographic data that are unavailable.

Wage Records in Wyoming: Employment and Earnings by Age and Gender in Construction, 2000-2015

Average Earnings by Age and Gender in the 23 - Construction Industry in 2015

Gender	Age Group	Number	Age Percent	Gender Percent	Average Annual Wage	Average Quarters Worked	Average Annual Employers
Women	00-19	108	4.2	0.0	\$5,166	2.4	1.5
Women	20-24	240	9.4	0.0	\$16,959	3.0	1.8
Women	25-34	556	21.8	0.0	\$26,477	3.3	1.5
Women	35-44	518	20.3	0.0	\$30,715	3.3	1.4
Women	45-54	529	20.7	0.0	\$36,296	3.5	1.3
Women	55-64	434	17.0	0.0	\$36,667	3.6	1.2
Women	65-Up	169	6.6	0.0	\$28,147	3.4	1.1
Women	N/A	2	0.1	0.0	\$19,254	3.0	1.0
Women	Total	2,556	100.0	6.8	\$29,409	3.3	1.4
Men	00-19	915	4.8	0.0	\$9,533	2.6	1.7
Men	20-24	2,684	14.2	0.0	\$20,988	3.0	1.7
Men	25-34	4,978	26.3	0.0	\$33,969	3.1	1.5
Men	35-44	4,046	21.4	0.0	\$41,960	3.2	1.4
Men	45-54	3,167	16.8	0.0	\$45,767	3.2	1.3
Men	55-64	2,486	13.2	0.0	\$51,933	3.3	1.2
Men	65-Up	623	3.3	0.0	\$40,473	3.2	1.1
Men	N/A	1	0.0	0.0	\$11,050	1.0	1.0
Men	Total	18,900	100.0	50.4	\$37,206	3.1	1.4
N/A	N/A	16,060	100.0	0.0	\$22,542	2.4	1.2
N/A	Total	16,060	100.0	42.8	\$22,542	2.4	1.2
Total	00-19	1,023	2.7	0.0	\$9,072	2.6	1.7
Total	20-24	2,924	7.8	0.0	\$20,657	3.0	1.7
Total	25-34	5,534	14.8	0.0	\$33,217	3.2	1.5
Total	35-44	4,564	12.2	0.0	\$40,684	3.2	1.4
Total	45-54	3,696	9.9	0.0	\$44,411	3.2	1.3
Total	55-64	2,920	7.8	0.0	\$49,664	3.4	1.2
Total	65-Up	792	2.1	0.0	\$37,843	3.2	1.1
Total	N/A	16,063	42.8	0.0	\$22,541	2.4	1.2
Total	Total	37,516	100.0	100.0	\$30,398	2.8	1.3

Note: Persons worked any time during the year.

Industry Determination: Based on the industry of employment in which the person made the most money in the year.

N/A: Represents persons with demographic data that are unavailable.