

Wyoming Growing and Declining Industries Report

First Quarter 2022

Prepared by: Laura Yetter, Senior Economist, and Michael Moore, Research Supervisor
Research & Planning, Wyoming Department of Workforce Services

Published August 15, 2022



Wyoming Growing and Declining Industries Report, First Quarter 2022

Wyoming Department of Workforce Services
Robin Sessions Cooley, Director

Research & Planning

Tony Glover, Manager

Carola Cowan, Bureau of Labor Statistics Programs Supervisor
Michael Moore, Research Supervisor

Prepared by:

Laura Yetter, Senior Economist
Michael Moore, Research Supervisor

Editorial Committee:

David Bullard, Jaime Cruz, Matthew Halama, Lisa Knapp, Chris McGrath, Michael Moore, and Laura Yetter

Published August 15, 2022.

©2022 by the Wyoming Department of Workforce Services, Research & Planning

Department of Workforce Services Nondiscrimination Statement

The Department of Workforce Services does not discriminate on the basis of race, color, religion, national origin, sex, age, or disability. It is our intention that all individuals seeking services from our agency be given equal opportunity and that eligibility decisions be based upon applicable statutes, rules, and regulations.

Research & Planning

P.O. Box 2760
Casper, WY 82602
Phone: (307) 473-3807
Fax: (307) 473-3834

R&P Website: <https://doe.state.wy.us/LMI/>

Growing and Declining Industries: https://doe.state.wy.us/LMI/G_DInd/G_D_Industries.htm

URL for this report: https://doe.state.wy.us/LMI/G_DInd/Report_22Q1.pdf

“Your Source for Wyoming Labor Market Information”

Who We Are

Research & Planning (R&P) functions as an exclusively statistical entity within the Wyoming Department of Workforce Services. R&P collects, analyzes, and publishes timely and accurate labor market information (LMI) meeting established statistical standards. We work to make the labor market more efficient by providing the public and the public’s representatives with the information needed for evidence-based, informed decision making.



Wyoming Growing and Declining Industries Report, 2022Q1

by: *Laura Yetter, Senior Economist*

A *growing* or *declining* industry is defined as an industry's employment level increasing or decreasing for two consecutive quarters by 5% or more compared to the prior the year. For example, all industries that grew or declined in employment by at least 5% from fourth quarter 2020 to fourth quarter 2021 (2020Q4 to 2021Q4) and subsequently from first quarter 2021 to first quarter 2022 (2021Q1 to 2022Q2) were included in the respective tables in this report.

Industries are defined by the North American Industry Classification System (NAICS). For this research, growing and declining industries were determined at the three-digit subsector level. For more information on NAICS, please see <https://www.census.gov/naics/>.

The database used to generate this information was the Quarterly Census of Employment and Wages (QCEW) file, which has roughly a half-year time lag from the distribution of this report. Growing and declining industry information is updated every quarter when new QCEW data become available. Only subsectors with employment sizes of 100 or more are included in these lists. Consequently, while employment in other industries may meet the growth criteria, that growth is taking place in industries with employment of less than 100.

For example, on the growing industries table (see Table 1, pages 5-6), average monthly employment for computer & electronic product manufacturing (NAICS 334) grew by 50.0% (102 jobs) over the year in 2021Q4 and 48.2% (106 jobs) in

Growing and Declining Industries

Historical growing and declining industry data for Wyoming are now available online at https://doe.state.wy.us/LMI/G_DInd/G_D_Industries.htm

2022Q1, thus qualifying as a growing industry for 2022Q1. The average growth rate for 2021Q4 and 2022Q1 for computer & electronic product manufacturing was 49.1%. Wyoming had 14 growing industries in 2022Q1, which accounted for 18.9% of all industries and 23% of the state's total employment (see Table 3 and Figure 2, page 9). Other examples of growing industries in 2022Q4 included support activities for mining (26.2% average growth rate), motion picture & sound recording industries (22.5%), plastics & rubber products manufacturing (19.8%), and miscellaneous manufacturing (19.4%).

The declining industry table (see Table 2, page 7) reads the same way, except with negative changes, and therefore, declining industries. There were four declining industries in 2022Q1, which made up 5.4% of all industries and 3.0% of the state's total employment. The four declining industries included petroleum & coal products manufacturing (-9.9%), nursing & residential care facilities (-8.4%), private households (-8.0%), and national security & international affairs (-6.3%).

The *average weekly wage* is calculated by dividing total wages for a particular subsector by the total number of jobs and the number of weeks in the observed

quarter. In 2022Q1, the average weekly wage was \$938 for growing industries and \$1,559 for declining industries (see Table 3 and Figure 3, page 8). Overall, the state's average weekly wage was \$1,089, which was less than 2021Q4 average state weekly wage of \$1,141.

During periods of economic expansion, the number of growing industries is much greater than the number of declining industries (see Figure 1). For example, the number of growing industries in Wyoming peaked at 26 in 2006Q3 and 2006Q4, compared to three and five declining industries, respectively.

But during economic downturns, there are far more declining industries than growing industries. R&P has defined an *economic downturn* as a period of at least two consecutive quarters of over-the-year decrease in average monthly employment and total wages based on data from the QCEW. Over the last 20 years, Wyoming has experienced three periods of economic downturn: 2009Q1-2010Q1, 2015Q2-2016Q4, and 2020Q2-2021Q1. During the most recent economic downturn, which was driven by the COVID-19 pandemic and declining energy prices, Wyoming had 37 declining industries in 2020Q3 compared to just three growing industries.

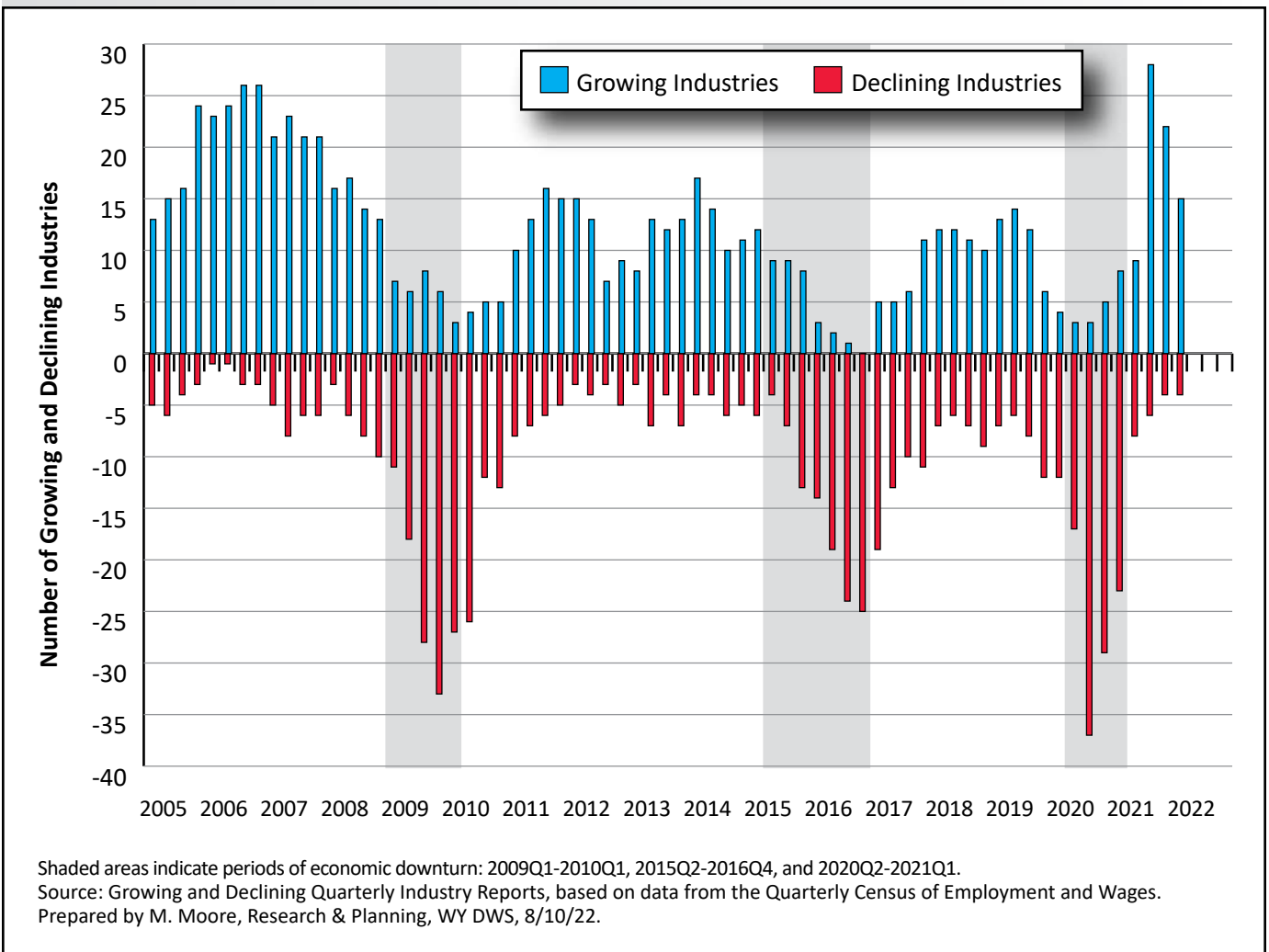


Figure 1: Number of Growing and Declining Industries in Wyoming by Year and Quarter, 2005Q1-2022Q1

Table 1: Growing Industries Report for Wyoming, First Quarter 2022

Subsector ^a (3-Digit NAICS ^b)	Sector (2-Digit NAICS)	Employment (Current Quarter)				Employment (Prior Quarter)				Growing Industries	
		2022Q1	2021Q1	N	%	2021Q4	2020Q4	N	%	Avg. % Change ^c	Average Weekly Wage ^d
Support Activities for Mining (213)	Mining, Including Oil & Gas (21)	5,983	4,885	1,098	22.5	6,020	4,636	1,384	29.9	26.2	\$1,459
Food Manufacturing (311)	Manufacturing (31-33)	807	759	48	6.3	981	861	120	13.9	10.1	\$686
Plastics & Rubber Products Manufacturing (326)	Manufacturing (31-33)	395	322	73	22.7	380	325	55	16.9	19.8	\$853
Primary Metal Manufacturing (331)	Manufacturing (31-33)	130	117	13	11.1	126	110	16	14.5	12.8	\$1,327
Machinery Manufacturing (333)	Manufacturing (31-33)	656	622	34	5.5	655	604	51	8.4	7.0	\$1,187
Computer & Electronic Product Manufacturing (334)	Manufacturing (31-33)	326	220	106	48.2	306	204	102	50.0	49.1	\$1,039
Miscellaneous Manufacturing (339)	Manufacturing (31-33)	167	140	27	19.3	159	133	26	19.5	19.4	\$748
Motion Picture & Sound Recording Industries (512)	Information (51)	350	285	65	22.8	364	298	66	22.1	22.5	\$434
Rental & Leasing Services (532)	Real Estate & Rental & Leasing (53)	1,528	1,423	105	7.4	1,555	1,449	106	7.3	7.3	\$1,071

^aIncludes both public and privately owned firms.

^bNorth American Industry Classification System.

^cThe percentage for average change is the employment-weighted average percentage change of the current and prior quarters (employment change current quarter + employment change prior quarter) divided by the employment for the current and prior quarters (employment current quarter + employment prior quarter).

^dThe average weekly wage is calculated by dividing the total wage for the industry group by the total number of jobs for the industry group and the number of weeks in the observed quarter. Please be aware that average weekly wages at the industry group level are susceptible to wage bias due to sample size, occupational distributions, seasonal pay and bonuses, and keying error.

The average weekly wage for all growing industries in 2022Q1 was \$940.

Source: Quarterly Census of Employment and Wages.

Prepared by L. Yetter and M. Moore, Research & Planning, WY DWS, 8/10/22.

(Table continued on page 6)

(Text continued from page 5)

Table 1: Growing Industries Report for Wyoming, First Quarter 2022

Subsector ^a (3-Digit NAICS ^b)	Sector (2-Digit NAICS)	Employment (Current Quarter)				Employment (Prior Quarter)				Growing Industries	
		2022Q1	2021Q1	N	%	2021Q4	2020Q4	N	%	Avg. % Change ^c	Average Weekly Wage ^d
Professional & Technical Services (541)	Professional, Scientific, & Technical Services (54)	10,335	9,707	628	6.5	10,346	9,556	790	8.3	7.4	\$1,528
Management of Companies & Enterprises (551)	Management of Companies & Enterprises (55)	893	771	122	15.8	922	751	171	22.8	19.3	\$6,568
Amusements, Gambling, & Recreation (713)	Arts, Entertainment, & Recreation (71)	2,854	2,577	277	10.7	2,831	2,601	230	8.8	9.8	\$433
Accom- modation (721)	Accom- modation & Food Services (72)	10,730	9,771	959	9.8	10,499	9,178	1,321	14.4	12.1	\$827
Food Services & Drinking Places (722)	Accom- modation & Food Services (72)	21,054	19,548	1,506	7.7	21,178	19,921	1,257	6.3	7.0	\$387
Unclassified Establishments	Unclassified	156	108	48	44.4	175	139	36	25.9	35.2	\$1,710
Total	Total	56,358	51,250	5,108	10.0	56,492	50,762	5,730	11.3	10.6	\$938

^aIncludes both public and privately owned firms.^bNorth American Industry Classification System.^cThe percentage for average change is the employment-weighted average percentage change of the current and prior quarters (employment change current quarter + employment change prior quarter) divided by the employment for the current and prior quarters (employment current quarter + employment prior quarter).^dThe average weekly wage is calculated by dividing the total wage for the industry group by the total number of jobs for the industry group and the number of weeks in the observed quarter. Please be aware that average weekly wages at the industry group level are susceptible to wage bias due to sample size, occupational distributions, seasonal pay and bonuses, and keying error.

The average weekly wage for all growing industries in 2022Q1 was \$940.

Source: Quarterly Census of Employment and Wages.

Prepared by L. Yetter and M. Moore, Research & Planning, WY DWS, 8/10/22.

Table 2: Declining Industries Report for Wyoming, First Quarter 2022

Subsector ^a (3-Digit NAICS ^b)	Sector (2-Digit NAICS)	Employment (Current Quarter)				Employment (Prior Quarter)				Declining Industries	
		2022Q1	2021Q1	N	%	2021Q4	2020Q4	N	%	Avg. % Change ^c	Average Weekly Wage ^d
Petroleum & Coal Products Manufacturing (324)	Mining, Including Oil & Gas (21)	1,054	1,188	-134	-11.3	1,097	1,199	-102	-8.5	-9.9	\$5,726
Nursing & Residential Care Facilities (623)	Health Care & Social Assistance (62)	4,625	4,953	-328	-6.6	4,553	5,066	-513	-10.1	-8.4	\$755
Private Households (814)	Other Services, Except Public Administration (81)	276	299	-23	-7.7	287	313	-26	-8.3	-8.0	\$723
National Security & International Affairs (928)	Public Administration (92)	1,246	1,324	-78	-5.9	1,244	1,334	-90	-6.7	-6.3	\$1,209
Total	Total	7,201	7,763	-562	-7.2	7,180	7,910	-730	-9.2	-8.2	\$1,559

^aIncludes both public and privately owned firms.

^bNorth American Industry Classification System.

^cThe percentage for average change is the employment-weighted average percentage change of the current and prior quarters (employment change current quarter + employment change prior quarter) divided by the employment for the current and prior quarters (employment current quarter + employment prior quarter).

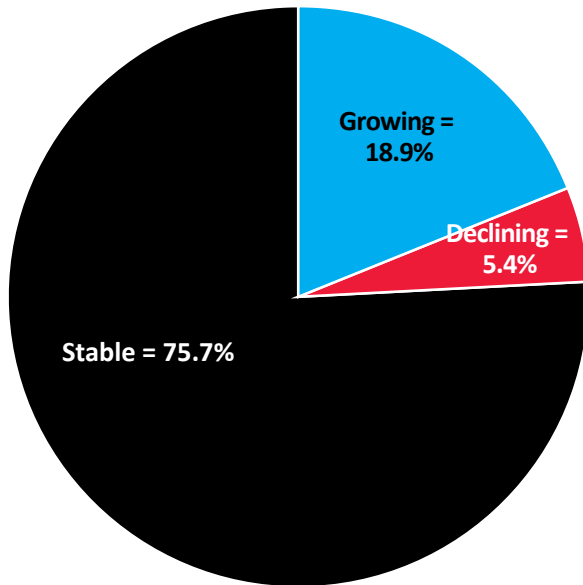
^dThe average weekly wage is calculated by dividing the total wage for the industry group by the total number of jobs for the industry group and the number of weeks in the observed quarter. Please be aware that average weekly wages at the industry group level are susceptible to wage bias due to sample size, occupational distributions, seasonal pay and bonuses, and keying error.

The average weekly wage for all declining industries in 2022Q1 was \$1,559.

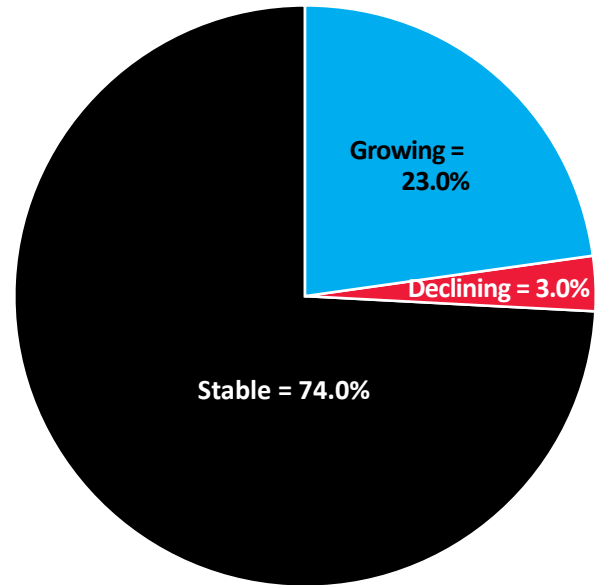
Source: Quarterly Census of Employment and Wages.

Prepared by L. Yetter and M. Moore, Research & Planning, WY DWS, 8/10/22.

**Distribution of Subsectors
(3-Digit NAICS^a)**



Distribution of Employment



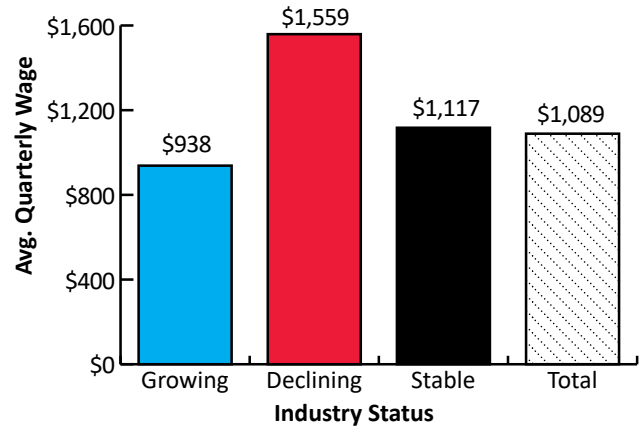
^aNorth American Industry Classification System.
 Source: Quarterly Census of Employment and Wages.
 Prepared by L. Yetter and M. Moore, Research & Planning, WY DWS, 8/10/22.

Figure 2: Distribution of Growing and Declining Industries (NAICS 3-Digit Subsector) in Wyoming, 2022Q1

Table 3: Distribution of Sectors and Employment by Growing/Declining Status in Wyoming, 2022Q1

Status	Subsectors (3-Digit NAICS)		Employment		Average Weekly Wage
	N	%	N	%	
Growing	14	18.9	56,208	23.0	\$938
Declining	4	5.4	7,201	3.0	\$1,559
Stable	56	75.7	180,827	74.0	\$1,117
Total	74	100.0	244,236	100.0	\$1,089

Source: Quarterly Census of Employment and Wages.
 Prepared by L. Yetter and M. Moore, Research & Planning, WY DWS, 8/10/22.



Source: Quarterly Census of Employment and Wages.
 Prepared by L. Yetter, Research & Planning, WY DWS, 8/10/22.

Figure 3: Average Weekly Wage of Growing and Declining Industries in Wyoming, 2022Q1



This publication was produced by the Research & Planning section of the Wyoming Department of Workforce Services.

**Research & Planning
P.O. Box 2760
Casper, WY 82602
Phone: (307) 473-3807
Fax: (307) 473-3834
Website: <https://doe.state.wy.us/LMI>
Email: dws-researchplanning@wyo.gov**

Material contained in this publication is in the public domain
and may be reproduced without special permission provided that source credit is given to:

Wyoming Growing and Declining Industries Report, First Quarter 2022, Wyoming Department of Workforce Services, Research & Planning

This workforce product was funded by a grant awarded by the U.S. Department of Labor's Employment and Training Administration. The product was created by the recipient and does not necessarily reflect the official position of the U.S. Department of Labor. The U.S. Department of Labor makes no guarantees, warranties, or assurances of any kind, express or implied, with respect to such information, including any information on linked sites and including, but not limited to, accuracy of the information or its completeness, timeliness, usefulness, adequacy, continued availability, or ownership. This product is copyrighted by the institution that created it. Internal use by an organization and/or personal use by an individual for non-commercial purposes is permissible. All other uses require the prior authorization of the copyright owner.