

TRENDS

Local Jobs and Payroll in Wyoming: Job Growth Remains Weak in First Quarter 2013

by: *David Bullard, Senior Economist*

tables by: *Nancy Brennan, Senior Economist*

The purpose of this article is to illustrate and describe employment and payroll changes between first quarter 2012 and first quarter 2013. These economic changes help gauge the overall strength of Wyoming’s economy and identify the fastest and slowest growing sectors and geographic areas.

Total unemployment insurance (UI) covered payroll increased by \$31.4 million (1.1%) in first quarter 2013. Employment rose by 460 jobs (0.2%) and average weekly wage increased by \$7 (0.8%). In first quarter, employment grew slightly faster than its five year average, but total wages and average weekly wage both grew at a slower pace than their five year averages (see Table 1, page 3). Job losses in the mining sector (including oil & gas) became deeper (-1,700 jobs, or -6.0%) and overall job growth weakened further. Additionally, employment at temporary help agencies fell by approximately 250 jobs. Temporary employment is often cited nationally as a leading economic

indicator, so this decrease may suggest continued weakness in the state’s economy. In terms of dollars, UI covered payroll represents approximately 91.5% of all wage and salary disbursements and 43.8% of personal income in the state (U.S. Bureau of Economic Analysis, 2013). Analysts have noted that “minerals related employment is one of the key predictors of sales and use tax revenue” in Wyoming (CREG 2010).

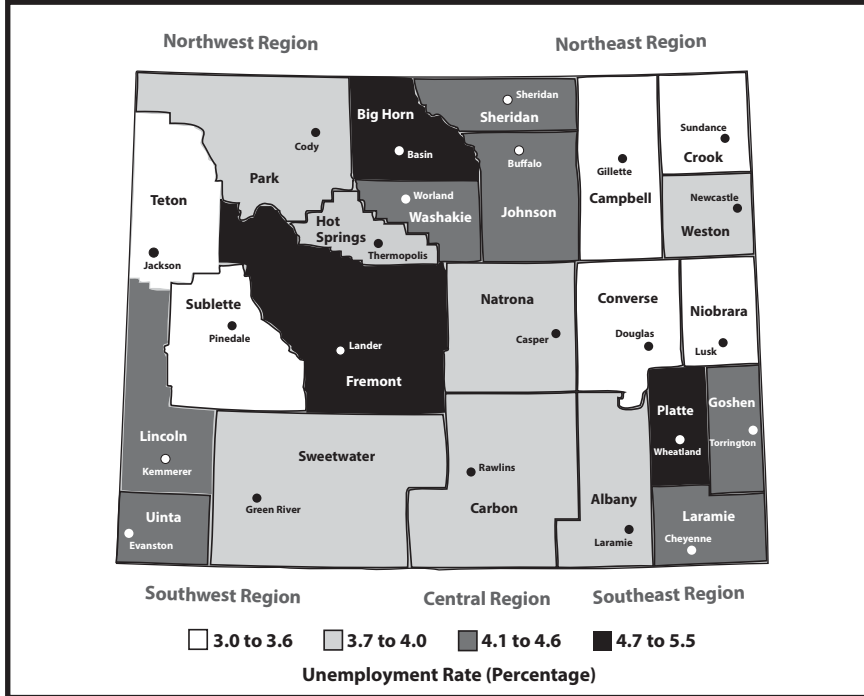
Despite the recent growth, overall employment remains approximately 5,700 jobs (2.1%) below its first quarter 2008 level. In short, the state has yet to make up

(Text continued on page 3)

HIGHLIGHTS

- The number of new persons appearing for the first time in the Wyoming Wage Records database increased by 1.4% from second quarter 2012 to second quarter 2013. Total wages increased by 2.3% over the year. ... page 15
- The turnover rates in the mining and manufacturing industries decreased by 3.7% from first quarter 2012 to first quarter 2013. The turnover rate in retail trade increased over the year by 1.8%. ... page 16
- Seasonally adjusted employment of Wyoming residents fell slightly, decreasing by 444 individuals (-0.2%) from July to August. ...page 17

Unemployment Rate by Wyoming County, August 2013 (Not Seasonally Adjusted)



IN THIS ISSUE

Local Jobs and Payroll in Wyoming: Job Growth Remains Weak in First Quarter 2013 1

Occupation Spotlight: Police, Fire, and Ambulance Dispatchers 12

Total Wages, Average Monthly Employment, and Average Monthly Wage Changes for Wyoming by Year/Quarter: 2004Q2 to 2013Q2 13

Persons Working in Jobs Covered by Wyoming State Unemployment Insurance, Second Quarter 2013 15

Quarterly Turnover Statistics by Industry, First Quarter 2013 16

Wyoming Unemployment Rate Stable at 4.6% in August 2013 17

Current Employment Statistics (CES) Estimates and Research & Planning’s Short-Term Projections, August 2013 18

State Unemployment Rates (Seasonally Adjusted) 18

Wyoming Nonagricultural Wage and Salary Employment . . 19

Economic Indicators 20

County Unemployment Rates 21

Unemployment Insurance Statistics 22

Wyoming Labor Force Trends

A monthly publication of the Wyoming Department of Workforce Services,
Joan Evans, Director

Research & Planning
P.O. Box 2760
Casper, WY 82602-2760
dws-researchplanning@wyo.gov
307-473-3807

Tom Gallagher, Manager
Tony Glover, Workforce Information Supervisor

Carola Cowan, Bureau of Labor Statistics Programs Supervisor

Phil Ellsworth, Editor
Michael Moore, Associate Editor

Editorial Committee: David Bullard, Valerie A. Davis, Phil Ellsworth, Michele Holmes and Michael Moore

Contributors to *Wyoming Labor Force Trends* this month: Nancy Brennan, David Bullard, Carola Cowan, Tony Glover, and Patrick Harris.

Subscriptions, additional copies, and back issues available free of charge.
© Copyright 2014 by the Wyoming Department of Workforce Services, Research & Planning.

Material contained in this publication is in the public domain and may be reproduced without special permission provided that source credit is given to: **Wyoming Labor Force Trends**, Wyoming Department of Workforce Services, Research & Planning

Department of Workforce Services Nondiscrimination Statement

The Department of Workforce Services does not discriminate on the basis of race, color, religion, national origin, sex, age, or disability. It is our intention that all individuals seeking services from our agency be given equal opportunity and that eligibility decisions be based upon applicable statutes, rules, and regulations.



Mission statement available at <http://doe.state.wy.us/LMI/mission.pdf>.

ISSN 0512-4409

(Text continued from page 1)

all of the job losses of 2009 and 2010.

Although mining employment fell at the statewide level, it increased 102 jobs (2.6%; see Table 4, page 9) in Natrona County. This growth may be related to increased oil & gas activity in neighboring Converse County. Construction employment increased statewide (465 jobs, or 2.5%; see Table 6, page 11), in Natrona County (320 jobs, or 12.4%, and in Laramie County (190 jobs, or 7.9%; see Table 5, page 10).

The covered payroll and employment data in this article are tabulated by place of work, in contrast to the labor force estimates (see page 21), which are a measure of employed and unemployed persons by place of residence. Also, the employment data presented in this article represent a count of jobs, not persons. When individuals work more than one job, each job is counted separately. Finally, job growth (or decline) is stated in terms of net change. The Quarterly Turnover Statistics by Industry table (see page 16) presents alternative measures of job gains and losses using the same data sources and

Table 1: Percentage Change in Wyoming Covered Employment and Wages for First Quarter 2009 (2009Q1) to First Quarter 2013 (2013Q1)

	Average Monthly Employment Percentage Change Over the Previous		Total Wages Percentage Change Over the Previous		Average Weekly Wage Percentage Change Over the Previous	
	Year	Quarter	Year	Quarter	Year	Quarter
2009Q1	-1.0	-4.9	-1.2	-13.0	-0.2	-8.5
2010Q1	-4.7	-3.2	-4.9	-9.8	-0.3	-6.7
2011Q1	1.1	-3.3	5.4	-10.3	4.3	-7.3
2012Q1	2.5	-2.9	8.0	-5.5	5.4	-2.7
2013Q1a	0.2	-3.0	1.1	-8.2	0.9	-5.4
Five-Year Average for Q1	-0.4	-3.5	1.7	-9.4	2.0	-6.1

^aPreliminary.

Source: Quarterly Census of Employment and Wages, developed through a cooperative program between Research & Planning and the U.S. Bureau of Labor Statistics.

Extract date: July 2013.

calculated to describe the components of change.

Figure 1 shows Wyoming wage & salary employment by covered/non-covered status. Approximately 92% of wage & salary jobs in the state are covered by state unemployment insurance, while 2.6% of jobs are covered by federal unemployment insurance, and 0.9% are covered by unemployment insurance administered by the railroad retirement board. There are several categories of non-covered jobs, and together they account for approximately 5% of wage & salary jobs in the state. Some examples of non-covered

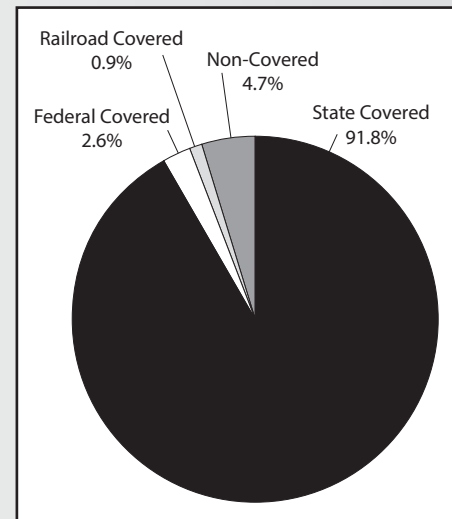


Figure 1: Wyoming Wage & Salary Employment by Covered/Non-Covered Status, March 2011

employment include elected officials, students working at educational institutions, employees of churches, and workers at small nonprofit organizations.

Figure 2 shows that the level of job growth fell from 2.5% in first quarter 2012 to 0.2% in first quarter 2013, its slowest pace since third quarter 2010. Total payroll growth, which had risen to 4.1% in fourth quarter slowed to 1.1% in first quarter (see Table 2).

Employment and Wages by County

Employment rose in 12 counties, fell in 10 counties, and was unchanged in Lincoln County (see Table 3, page 5, and Map, page 6). Total payroll increased in 17 counties and decreased in six counties.

Teton County added 415 jobs (2.6%) and its total payroll rose by \$21.2 million (13.5%). Large job gains were seen in accommodation & food services (approximately 100 jobs), educational services (approximately 100 jobs), construction (approximately 50 jobs), real estate & rental & leasing (approximately 50 jobs), administrative & waste services (approximately 50 jobs), and professional & technical services (approximately 50 jobs). It appears that the rapid growth in total payroll (13.5%) and average weekly wage (10.7%) was related to bonuses paid in

(Text continued on page 7)

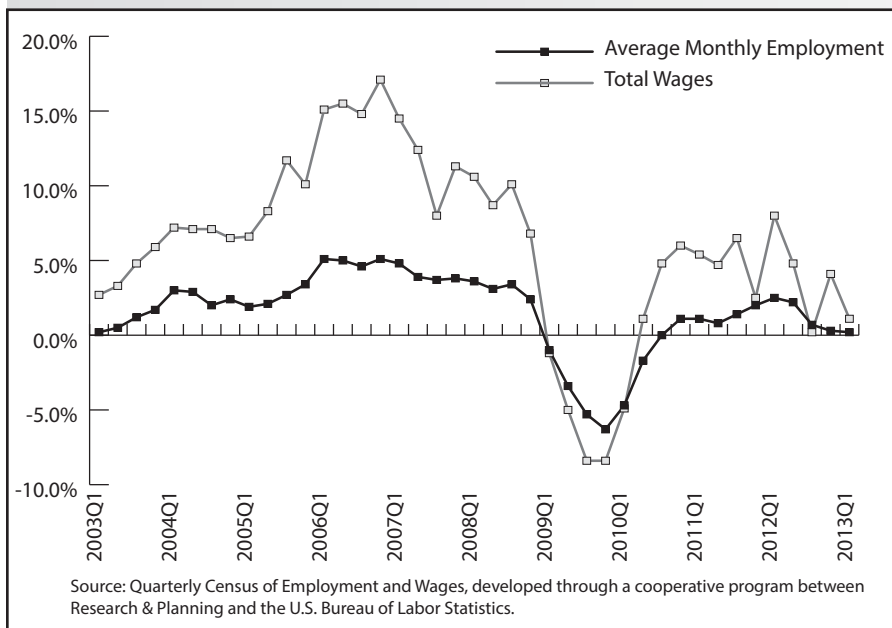


Figure 2: Over-the-Year Percentage Change in Wyoming Covered Employment and Wages, First Quarter 2003 (2003Q1) to First Quarter 2013 (2013Q1)

Table 2: Over-the-Year Percentage Change in Wyoming Covered Employment and Wages for First Quarter 2004 (2004Q1) to First Quarter 2013 (2013Q1)

	Average Monthly Employment	Total Wages
2004Q1	3.0	7.2
2004Q2	2.9	7.1
2004Q3	2.0	7.1
2004Q4	2.4	6.5
2005Q1	1.9	6.6
2005Q2	2.1	8.3
2005Q3	2.7	11.7
2005Q4	3.4	10.1
2006Q1	5.1	15.1
2006Q2	5.0	15.5
2006Q3	4.6	14.8
2006Q4	5.1	17.1
2007Q1	4.8	14.5
2007Q2	3.9	12.4
2007Q3	3.7	8.0
2007Q4	3.8	11.3
2008Q1	3.6	10.6
2008Q2	3.1	8.7
2008Q3	3.4	10.1
2008Q4	2.4	6.8
2009Q1	-1.0	-1.2
2009Q2	-3.4	-5.0
2009Q3	-5.3	-8.4
2009Q4	-6.3	-8.4
2010Q1	-4.7	-4.9
2010Q2	-1.7	1.1
2010Q3	0.0	4.8
2010Q4	1.1	6.0
2011Q1	1.1	5.4
2011Q2	0.8	4.7
2011Q3	1.4	6.5
2011Q4	2.0	2.5
2012Q1	2.5	8.0
2012Q2	2.2	4.8
2012Q3	0.7	0.2
2012Q4	0.3	4.1
2013Q1 ^a	0.2	1.1

^aPreliminary.

Source: Quarterly Census of Employment and Wages, developed through a cooperative program between Research & Planning and the U.S. Bureau of Labor Statistics.

Extract date: July 2013.

Table 3: Wyoming Average Monthly Employment, Total Payroll, and Average Weekly Wage for First Quarter by County, 2012 and 2013^a

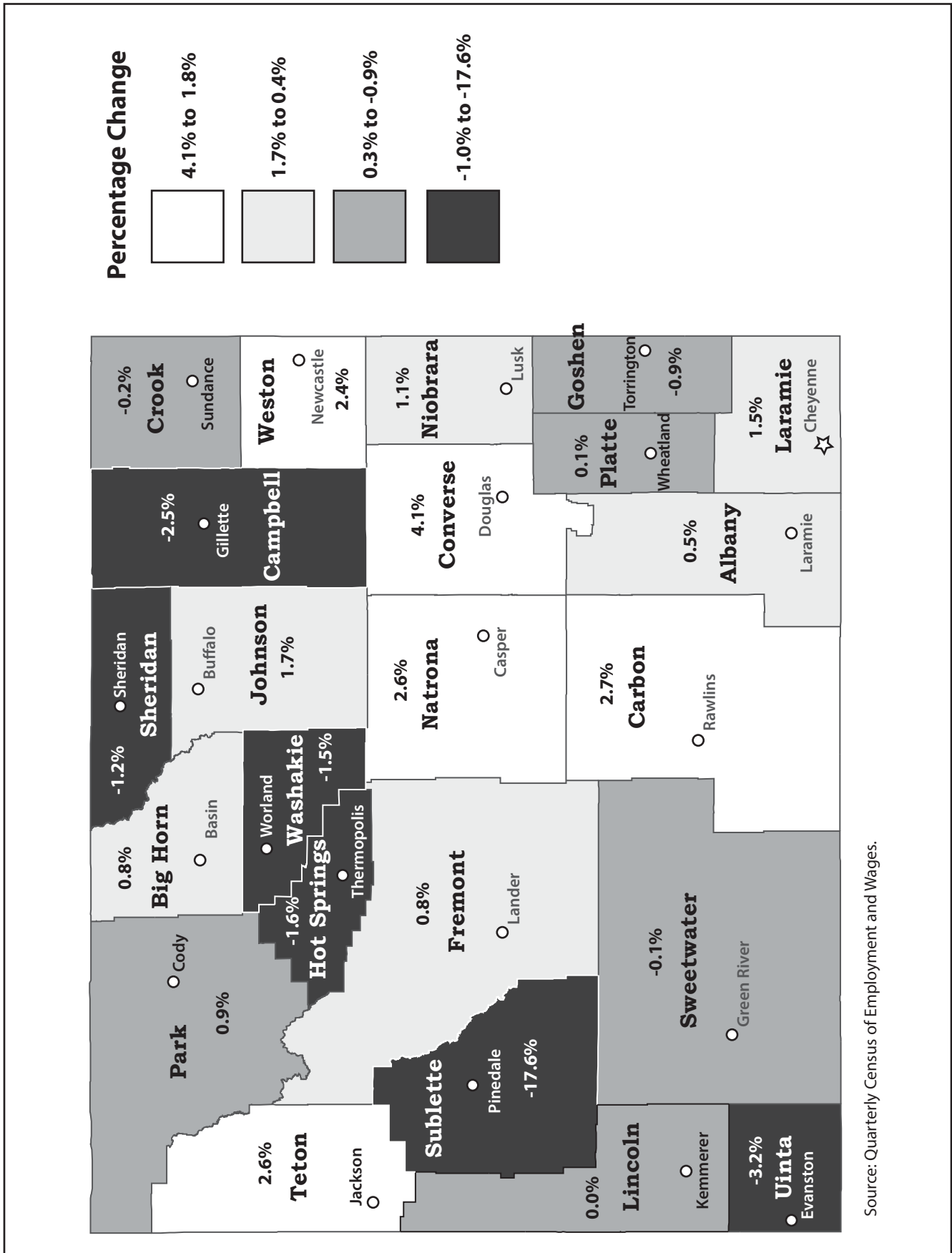
County	Average Monthly Employment			Total Payroll			Average Weekly Wage			
	First Quarter 2012	First Quarter 2013	Change n %	First Quarter 2012	First Quarter 2013	Change \$ %	First Quarter 2012	First Quarter 2013	Change \$ %	
Total	270,073	270,533	460 0.2	\$2,991,246,352	\$3,022,669,945	\$31,423,593	1.1	\$852	\$859	\$7 0.8
Albany	15,131	15,202	71 0.5	\$134,763,281	\$136,404,897	\$1,641,616	1.2	\$685	\$690	\$5 0.7
Big Horn	4,046	4,079	33 0.8	36,135,261	36,859,580	724,319	2.0	687	695	8 1.2
Campbell	27,690	26,994	-696 -2.5	398,153,853	381,940,331	-16,213,522	-4.1	1,106	1,088	-18 -1.6
Carbon	6,486	6,660	174 2.7	65,913,689	69,317,723	3,404,034	5.2	782	801	19 2.4
Converse	5,732	5,969	237 4.1	61,889,784	66,325,526	4,435,742	7.2	831	855	24 2.9
Crook	2,240	2,235	-5 -0.2	19,527,261	20,471,567	944,306	4.8	671	705	34 5.1
Fremont	16,347	16,470	123 0.8	158,050,218	159,563,950	1,513,732	1.0	744	745	1 0.1
Goshen	4,555	4,515	-40 -0.9	36,049,258	36,519,707	470,449	1.3	609	622	13 2.1
Hot Springs	2,092	2,059	-33 -1.6	16,876,619	16,956,271	79,652	0.5	621	633	12 1.9
Johnson	3,136	3,189	53 1.7	24,944,461	27,059,055	2,114,594	8.5	612	653	41 6.7
Laramie	42,781	43,417	636 1.5	439,717,883	461,487,052	21,769,169	5.0	791	818	27 3.4
Lincoln	5,495	5,495	0 0.0	59,014,351	56,360,488	-2,653,863	-4.5	826	789	-37 -4.5
Natrona	39,823	40,842	1,019 2.6	466,839,469	479,499,012	12,659,543	2.7	902	903	1 0.1
Niobrara	892	902	10 1.1	6,683,899	7,127,463	443,564	6.6	576	608	32 5.6
Park	12,580	12,471	-109 -0.9	120,087,888	120,846,603	758,715	0.6	734	745	11 1.5
Platte	3,384	3,389	5 0.1	31,864,011	32,278,227	414,216	1.3	724	733	9 1.2
Sheridan	12,471	12,324	-147 -1.2	115,050,840	115,170,468	119,628	0.1	710	719	9 1.3
Sublette	5,756	4,745	-1,011 -17.6	89,481,996	72,359,135	-17,122,861	-19.1	1,196	1,173	-23 -1.9
Sweetwater	24,407	24,373	-34 -0.1	347,974,608	346,005,919	-1,968,689	-0.6	1,097	1,092	-5 -0.5
Teton	16,185	16,600	415 2.6	157,003,573	178,228,969	21,225,396	13.5	746	826	80 10.7
Uinta	9,018	8,730	-288 -3.2	94,838,818	90,816,365	-4,022,453	-4.2	809	800	-9 -1.1
Washakie	3,705	3,651	-54 -1.5	33,899,032	33,362,727	-536,305	-1.6	704	703	-1 -0.1
Weston	2,187	2,240	53 2.4	19,411,654	20,725,082	1,313,428	6.8	683	712	29 4.2
Nonclassified ^b	3,933	3,979	46 1.2	57,074,645	56,983,828	-90,817	-0.2	1,116	1,102	-15 -1.3

^aPreliminary.

^bThe employer may be located statewide or in more than one county.

Source: Quarterly Census of Employment and Wages, developed through a cooperative program between Research & Planning and the U.S. Bureau of Labor Statistics.

Extract date: July 2013.



Map: Over-the-Year Percentage Change in Average Monthly Employment in Wyoming by County, First Quarter 2003 to First Quarter 2013

(Text continued from page 4)

management of companies & enterprises and wholesale trade.

Converse County gained 237 jobs (4.1%) and its total payroll increased by \$4.4 million (7.2%). Employment increased in mining (including oil & gas; more than 100 jobs) and transportation & warehousing (nearly 100 jobs).

Carbon County's employment rose by 174 jobs (2.7%) and its total payroll increased by \$3.4 million (5.2%). Construction added 100 jobs, and smaller gains were seen in retail trade and administrative & waste services. Employment fell modestly in accommodation & food services, mining, state government, federal government, and transportation & warehousing.

Fremont County added 123 jobs (0.8%) and its total payroll rose by \$1.5 million (1.0%). The largest job gains occurred in local government (including public schools and colleges; more than 100 jobs) and accommodation & food services (more than 100 jobs). Smaller gains were seen in mining, manufacturing, and other services. Employment fell in construction, wholesale trade, retail trade, and professional & technical services.

Sublette County lost 1,011 jobs (-17.6%) and its total payroll fell by \$17.1 million (-19.1%). Mining (including oil & gas) lost approximately 650 jobs and construction lost more than 150 jobs. More modest job losses occurred in accommodation & food services, retail trade, and professional & technical services.

Campbell County's employment fell by 696 jobs (-2.5%) and its total payroll

decreased by \$16.2 million (-4.1%). Mining posted the largest job losses, falling by more than 450 jobs. Within mining, coal mining lost nearly 400 jobs, and oil & gas employment also decreased. Smaller job losses were seen in construction (more than 150 jobs), other services (more than 100 jobs), wholesale trade (approximately 100 jobs), and transportation & warehousing (approximately 100 jobs). Employment increased in local government (including public schools, colleges, & hospitals; approximately 200 jobs).

Uinta County lost 288 jobs (-3.2%) and its total payroll fell by \$4.0 million (-4.2%). Job losses affected many different sectors, including construction, administrative & waste services, local government, other services, retail trade, manufacturing, and accommodation & food services.

Sheridan County's employment fell by 147 jobs (-1.2%) and its total payroll increased very slightly \$119,628 (0.1%). Small job losses were seen in many sectors, including mining, construction, retail trade, transportation & warehousing, administrative & waste services, and health care & social assistance.

Natrona County added 1,019 jobs (2.6%; see Table 4, page 9) and its total payroll increased by \$12.7 million (2.7%). The largest job gains occurred in construction (320 jobs, or 12.4%), accommodation & food services (246 jobs, or 6.7%), health care & social assistance (175 jobs, or 3.2%), and transportation & warehousing (151 jobs, or 13.9%). Job losses were seen in administrative & waste services (-144 jobs, or -10.8%) and manufacturing (-102 jobs, or -5.5%).

Laramie County's employment rose by 636 jobs (1.5%; see Table 5, page 10) and its

total payroll increased by \$21.8 million (5.0%). Strong growth was seen in construction (190 jobs, or 7.9%), other services (112 jobs, or 0.8%), arts, entertainment & recreation (103 jobs, or 2.6%), retail trade (95 jobs, or 1.8%), and state government (80 jobs, or 1.1%). Employment fell in administrative & waste services (-46 jobs, or -3.0%) and professional & technical services (-38 jobs, or -2.3%).

Statewide Employment and Wages by Industry

The largest job gains occurred in accommodation & food services, construction, local government (including public schools, colleges, & hospitals), real estate & rental & leasing, and health care & social assistance (see Table 6, page 11). Employment decreased in mining (including oil & gas), administrative & waste services, other services, and information.

Accommodation & food services added 594 jobs (2.1%) and its total payroll rose by \$15.7 million (12.6%). Nearly all the job gains occurred in food services & drinking places.

Construction employment rose by 465 jobs (2.5%) and its total payroll increased by \$12.6 million (6.0%). Heavy & civil engineering construction lost approximately 200 jobs, while specialty trade contractors added approximately 600 jobs.

Employment in local government increased by 455 jobs (1.0%) and its total payroll rose by \$8.8 million (1.9%). Hospitals added 268 jobs (4.0%) while local government education (including school districts and community colleges) added 23 jobs (0.1%).

Real estate & rental & leasing added

219 jobs (5.6%) and its total payroll grew by \$5.5 million (13.4%). Most of the job gains occurred in rental & leasing services (approximately 150 jobs), while real estate employment grew by more than 50 jobs.

Health care & social assistance employment grew by 218 jobs (0.9%) and its total payroll rose by \$2.9 million (1.3%). Ambulatory health care services added 192 jobs (2.1%) and social assistance added 139 jobs (2.1%). Job losses were seen in private hospitals (-84 jobs, or -2.7%) and nursing & residential care facilities (-29 jobs, or -0.6%).

Mining employment fell by 1,700 jobs (-6.0%) and total payroll decreased by \$39.3 million (-6.4%). Large job losses were seen in support activities for mining (including oil & gas well drilling and support activities for oil & gas; down more than 1,400 jobs). Coal mining employment fell by more than 300 jobs.

Administrative & waste services lost 435 jobs (-6.1%) and its total payroll fell by \$4.1 million (-7.6%). Employment fell by more than 250 jobs in temporary help services and smaller job losses were seen in office administrative services, business support services, and waste management & remediation services. Job losses at temporary help agencies might suggest weak job growth in coming quarters.

Employment in other services fell by 160 jobs (-1.9%) and its total payroll decreased by \$1.4 million (-2.0%). Job losses were seen in repair & maintenance, membership associations & organizations, and private households.

(Text continued on page 12)

Table 4: Natrona County Average Monthly Employment, Total Payroll, and Average Weekly Wage for First Quarter by Industry, 2012 and 2013^a

NAICS ^b Title	Average Monthly Employment			Total Payroll			Average Weekly Wage					
	First Quarter		Change	First Quarter		Change	First Quarter		Change			
	2012	2013	n	%	2012	2013	\$	%	2012	2013	\$	%
Total, All Industries	39,823	40,842	1,019	2.6	\$466,839,469	\$479,499,012	\$12,659,543	2.7	\$902	\$903	\$1	0.1
Total Private	34,076	35,118	1,042	3.1	\$398,364,084	\$410,968,084	\$12,604,000	3.2	\$899	\$900	\$1	0.1
Agriculture	116	108	-8	-6.9	633,991	598,629	-35,362	-5.6	420	426	6	1.4
Mining	3,863	3,965	102	2.6	87,938,384	90,028,114	2,089,730	2.4	1,751	1,747	-4	-0.2
Utilities	135	136	1	0.7	2,243,725	2,060,198	-183,527	-8.2	1,278	1,165	-113	-8.8
Construction	2,585	2,905	320	12.4	31,523,692	36,449,280	4,925,588	15.6	938	965	27	2.9
Manufacturing	1,860	1,758	-102	-5.5	24,224,508	23,775,440	-449,068	-1.9	1,002	1,040	38	3.8
Wholesale Trade	2,685	2,743	58	2.2	41,749,260	41,311,084	-438,176	-1.0	1,196	1,159	-37	-3.1
Retail Trade	4,644	4,731	87	1.9	32,644,273	33,270,457	626,184	1.9	541	541	0	0.0
Transportation & Warehousing	1,087	1,238	151	13.9	14,464,425	16,670,125	2,205,700	15.2	1,024	1,036	12	1.2
Information	469	451	-18	-3.8	4,698,420	4,448,449	-249,971	-5.3	771	759	-12	-1.6
Finance & Insurance	1,028	1,045	17	1.7	15,114,591	16,444,524	1,329,933	8.8	1,131	1,210	79	7.0
Real Est. & Rental & Leasing	883	945	62	7.0	11,066,885	12,411,411	1,344,526	12.1	964	1,010	46	4.8
Professional & Technical Services	1,493	1,510	17	1.1	18,941,481	19,882,146	940,665	5.0	976	1,013	37	3.8
Mgmt. of Companies & Enterprises	166	209	43	25.9	3,773,448	4,370,910	597,462	15.8	1,749	1,609	-140	-8.0
Administrative & Waste Services	1,332	1,188	-144	-10.8	10,100,251	9,130,004	-970,247	-9.6	583	591	8	1.4
Educational Services	148	160	12	8.1	865,320	846,173	-19,147	-2.2	450	407	-43	-9.6
Health Care & Social Assistance	5,486	5,661	175	3.2	61,275,552	61,044,871	-230,681	-0.4	859	829	-30	-3.5
Ambulatory Health Care Services	1,947	2,023	76	3.9	29,266,737	28,076,691	-1,190,046	-4.1	1,156	1,068	-88	-7.6
Hospitals	1,605	1,627	22	1.4	19,871,121	20,635,749	764,628	3.8	952	976	24	2.5
Nursing & Res. Care Facilities	922	970	48	5.2	6,978,529	7,015,974	37,445	0.5	582	556	-26	-4.5
Social Assistance	1,012	1,041	29	2.9	5,159,165	5,316,457	157,292	3.0	392	393	1	0.3
Arts, Ent., & Recreation	409	408	-1	-0.2	1,414,936	1,368,402	-46,534	-3.3	266	258	-8	-3.0
Accommodation & Food Services	3,697	3,943	246	6.7	14,264,933	15,305,136	1,040,203	7.3	297	299	2	0.7
Other Services	1,990	2,013	23	1.2	21,426,009	21,552,731	126,722	0.6	828	824	-4	-0.5
Total Government	5,748	5,724	-24	-0.4	\$68,475,385	\$68,530,928	\$55,543	0.1	\$916	\$921	\$5	0.5
Federal Government	667	648	-19	-2.8	11,131,007	10,798,239	-332,768	-3.0	1,284	1,282	-2	-0.2
State Government	711	713	2	0.3	9,564,444	9,606,700	42,256	0.4	1,035	1,036	1	0.1
Local Government	4,369	4,363	-6	-0.1	47,779,934	48,125,989	346,055	0.7	841	848	7	0.8
Local Government Education	ND	ND	ND	ND	ND	ND	ND	ND	ND	ND	ND	ND

^aPreliminary.

^bNorth American Industry Classification System.

ND-Not disclosable due to confidentiality of information.

Source: Quarterly Census of Employment and Wages, developed through a cooperative program between Research & Planning and the U.S. Bureau of Labor Statistics.

Extract date: July 2013.

Table 5: Laramie County Average Monthly Employment, Total Payroll, and Average Weekly Wage for First Quarter by Industry, 2012 and 2013^a

NAICS ^b Title	Average Monthly Employment			Total Payroll			Average Weekly Wage					
	First Quarter		Change	First Quarter		Change	First Quarter		Change			
	2012	2013	n	2012	2013	\$	%	2012	2013	\$	%	
Total, All Industries	42,781	43,417	636	1.5	\$439,717,883	\$461,487,052	\$21,769,169	5.0	\$791	\$818	\$27	3.4
Total Private	29,086	29,610	524	1.8	\$263,213,332	\$281,116,475	\$17,903,143	6.8	\$696	\$730	\$34	4.9
Agriculture	286	304	18	6.3	2,050,330	2,144,743	94,413	4.6	551	543	-8	-1.5
Mining	212	203	-9	-4.2	4,380,954	3,406,945	-974,009	-22.2	1,590	1,291	-299	-18.8
Utilities	139	143	4	2.9	3,293,689	2,879,500	-414,189	-12.6	1,823	1,549	-274	-15.0
Construction	2,405	2,595	190	7.9	23,089,898	26,591,665	3,501,767	15.2	739	788	49	6.6
Manufacturing	1,334	1,333	-1	-0.1	17,334,580	17,569,288	234,708	1.4	1,000	1,014	14	1.4
Wholesale Trade	889	925	36	4.0	11,866,263	12,006,926	140,663	1.2	1,027	998	-29	-2.8
Retail Trade	5,241	5,336	95	1.8	34,696,924	34,711,660	14,736	0.0	509	500	-9	-1.8
Transportation & Warehousing	2,384	2,419	35	1.5	24,775,155	25,882,734	1,107,579	4.5	799	823	24	3.0
Information	1,137	1,130	-7	-0.6	12,153,523	12,531,200	377,677	3.1	822	853	31	3.8
Finance & Insurance	1,625	1,630	5	0.3	20,021,677	20,957,386	935,709	4.7	948	989	41	4.3
Real Estate & Rental & Leasing	547	548	1	0.2	5,108,913	5,808,782	699,869	13.7	718	815	97	13.5
Professional & Technical Services	1,624	1,586	-38	-2.3	21,681,300	19,881,811	-1,799,489	-8.3	1,027	964	-63	-6.1
Mgmt. of Companies & Enterprises	71	83	12	16.9	1,453,984	1,429,777	-24,207	-1.7	1,575	1,325	-250	-15.9
Administrative & Waste Services	1,541	1,495	-46	-3.0	9,222,789	9,277,315	54,526	0.6	460	477	17	3.7
Educational Services	246	260	14	5.7	1,562,856	1,527,114	-35,742	-2.3	489	452	-37	-7.6
Health Care & Social Assistance	3,939	4,005	66	1.7	39,603,410	41,038,971	1,435,561	3.6	773	788	15	1.9
Ambulatory Health Care Services	1,887	1,964	77	4.1	26,806,584	28,382,105	1,575,521	5.9	1,093	1,112	19	1.7
Nursing & Res. Care Facilities	860	850	-10	-1.2	6,266,114	6,208,902	-57,212	-0.9	560	562	2	0.4
Hospitals & Social Assistance	1,191	1,191	0	0.0	6,530,712	6,447,964	-82,748	-1.3	422	416	-6	-1.3
Arts, Entertainment, & Recreation	250	271	21	8.4	840,559	863,453	22,894	2.7	259	245	-14	-5.4
Accommodation & Food Services	3,955	4,058	103	2.6	20,957,827	33,542,930	12,585,103	60.0	408	636	228	55.9
Other Services	1,261	1,287	26	2.1	9,118,701	9,064,275	-54,426	-0.6	556	542	-14	-2.5
Total Government	13,695	13,807	112	0.8	\$176,504,551	\$180,370,577	\$3,866,026	2.2	\$991	\$1,005	\$14	1.4
Federal Government	2,565	2,568	3	0.1	42,086,822	42,168,168	81,346	0.2	1,262	1,263	1	0.1
State Government	4,021	4,049	28	0.7	57,505,284	58,149,395	644,111	1.1	1,100	1,105	5	0.5
Local Government	7,110	7,190	80	1.1	76,912,445	80,053,014	3,140,569	4.1	832	856	24	2.9
Local Government Education	3,808	3,779	-29	-0.8	39,137,704	38,156,627	-981,077	-2.5	791	777	-14	-1.8

^aPreliminary.^bNorth American Industry Classification System.

ND-Not disclosable due to confidentiality of information.

Source: Quarterly Census of Employment and Wages, developed through a cooperative program between Research & Planning and the U.S. Bureau of Labor Statistics.

Extract date: July 2013.

Table 6: Wyoming Average Monthly Employment, Total Payroll, and Average Weekly Wage for First Quarter by Industry, 2012 and 2013a

NAICS ^b Title	Average Monthly Employment			Total Payroll			Average Weekly Wage					
	First Quarter	Change	%	First Quarter	Change	%	First Quarter	Change	%			
	2012	2013	n	2012	2013		2012	2013				
Total, All Industries	270,073	270,533	460	0.2	\$2,991,246,352	\$3,022,669,945	\$31,423,593	1.1	\$852	\$859	\$7	0.8
Total Private	203,357	203,417	60	0.0	\$2,250,959,719	\$2,274,388,139	\$23,428,420	1.0	\$851	\$860	\$9	1.1
Agriculture	2,261	2,244	-17	-0.8	16,573,122	16,586,233	13,111	0.1	564	569	5	0.9
Mining	28,178	26,478	-1,700	-6.0	617,397,445	578,115,639	-39,281,806	-6.4	1,685	1,680	-5	-0.3
Utilities	2,457	2,470	13	0.5	47,457,935	46,264,319	-1,193,616	-2.5	1,486	1,441	-45	-3.0
Construction	18,642	19,107	465	2.5	209,212,732	221,827,532	12,614,800	6.0	863	893	30	3.5
Manufacturing	9,140	9,256	116	1.3	128,181,419	132,299,736	4,118,317	3.2	1,079	1,099	20	1.9
Wholesale Trade	9,066	9,071	5	0.1	129,711,931	127,791,605	-1,920,326	-1.5	1,101	1,084	-17	-1.5
Retail Trade	28,300	28,427	127	0.4	185,264,048	188,189,052	2,925,004	1.6	504	509	5	1.0
Transportation & Warehousing	9,448	9,619	171	1.8	110,873,338	112,367,715	1,494,377	1.3	903	899	-4	-0.4
Information	3,898	3,789	-109	-2.8	40,235,758	39,569,735	-666,023	-1.7	794	803	9	1.1
Finance & Insurance	6,670	6,712	42	0.6	86,845,816	93,219,662	6,373,846	7.3	1,002	1,068	66	6.6
Real Estate & Rental & Leasing	3,923	4,142	219	5.6	40,883,800	46,347,670	5,463,870	13.4	802	861	59	7.4
Professional & Technical Services	9,199	9,282	83	0.9	120,819,567	117,382,698	-3,436,869	-2.8	1,010	973	-37	-3.7
Mgmt. of Companies & Enterprises	901	1,034	133	14.8	24,655,301	47,831,289	23,175,988	94.0	2,105	3,558	1,453	69.0
Administrative & Waste Services	7,110	6,675	-435	-6.1	54,271,655	50,143,338	-4,128,317	-7.6	587	578	-9	-1.5
Educational Services	1,585	1,786	201	12.7	11,559,819	12,154,390	594,571	5.1	561	523	-38	-6.8
Health Care & Social Assistance	23,523	23,741	218	0.9	220,562,620	223,418,134	2,855,514	1.3	721	724	3	0.4
Ambulatory Health Care Services	9,034	9,226	192	2.1	116,450,668	118,883,882	2,433,214	2.1	992	991	-1	-0.1
Hospitals	3,133	3,049	-84	-2.7	37,123,853	36,931,637	-192,216	-0.5	911	932	21	2.3
Nursing & Res. Care Facilities	4,626	4,597	-29	-0.6	32,430,060	32,351,226	-78,834	-0.2	539	541	2	0.4
Social Assistance	6,730	6,869	139	2.1	34,558,039	35,251,389	693,350	2.0	395	395	0	0.0
Arts, Entertainment, & Recreation	2,352	2,445	93	4.0	10,492,170	10,599,097	106,927	1.0	343	333	-10	-2.9
Accommodation & Food Services	28,430	29,024	594	2.1	124,790,084	140,538,929	15,748,845	12.6	338	372	34	10.1
Other Services	8,275	8,115	-160	-1.9	71,171,159	69,741,366	-1,429,793	-2.0	662	661	-1	-0.2
Total Government	66,716	67,116	400	0.6	\$740,286,633	\$748,281,806	\$7,995,173	1.1	\$854	\$858	\$4	0.5
Federal Government	7,021	6,981	-40	-0.6	105,396,622	104,670,713	-725,909	-0.7	1,155	1,153	-2	-0.2
State Government	13,252	13,238	-14	-0.1	172,406,562	172,286,887	-119,675	-0.1	1,001	1,001	0	0.0
State Government Education	3,553	3,564	11	0.3	44,223,393	44,066,524	-156,869	-0.4	957	951	-6	-0.7
Local Government	46,443	46,898	455	1.0	462,483,449	471,324,206	8,840,757	1.9	766	773	7	0.9
Local Government Education	24,703	24,726	23	0.1	238,505,393	237,393,828	-1,111,565	-0.5	743	739	-4	-0.6
Hospitals	6,727	6,996	268	4.0	86,463,762	92,195,391	5,731,629	6.6	989	1,014	25	2.5

^apreliminary.

^bNorth American Industry Classification System.

Source: Quarterly Census of Employment and Wages, developed through a cooperative program between Research & Planning and the U.S. Bureau of Labor Statistics. Extract date: July 2013.

(Text continued from page 8)

Information lost 109 jobs (-2.8%) and its total payroll fell by \$0.7 million (-1.7%). Employment fell slightly in publishing, motion picture & sound recording, broadcasting, and telecommunications.

In summary, job losses in oil & gas continued in first quarter, causing overall job growth to remain very weak. There were wide variations in economic conditions across the state's 23 counties.

Carbon, Converse, Natrona, and Teton counties all saw solid job growth while large job losses were noted in Sublette, Campbell, and Uinta counties.

References

Consensus Revenue Estimating Group (CREG; 2010, October) *Wyoming state government revenue forecast fiscal year 2011-fiscal year 2016*. Retrieved February

17, 2011 from http://eadiv.state.wy.us/creg/GreenCREG_Oct10.pdf

U.S. Bureau of Economic Analysis. (2013, January 16). *SA04 State income and employment summary*. Retrieved January 16, 2013, from <http://www.bea.gov/iTable/iTable.cfm?ReqID=70&step=1&isuri=1&acrdn=4>

David Bullard can be reached at <http://doe.state.wy.us/LMI/staff/deb.htm>.

Occupation Spotlight:

Police, Fire, and Ambulance Dispatchers



Receive complaints from public concerning crimes and police emergencies. Broadcast orders to police patrol units in vicinity of complaint to investigate. Operate radio, telephone, or computer equipment to receive reports of fires and medical emergencies and relay information or orders to proper officials.

Statewide Employment: 1,330
Mean Annual Wage: \$37,383

Northwest Region

Employment: **240**
Mean Annual Wage: **\$36,349**

Southwest Region

Employment: **360**
Mean Annual Wage: **\$41,343**



Northeast Region

Employment: **230**
Mean Annual Wage: **\$36,131**

Central-Southeast Region

Employment: **120**
Mean Annual Wage: **\$34,165**

Source: Occupational Employment Statistics (<http://doe.state.wy.us/LMI/oes.htm>).

Total Wages, Average Monthly Employment, and Average Monthly Wage Changes for Wyoming by Year/Quarter: 2004Q2 to 2013Q2

Year/Quarter	Total Wages	% Change	Avg. Monthly Employment	% Change	Avg. Monthly Wage	% Change
2004/2	\$1,909,209,013		250,786		\$2,537.63	
2005/2	\$2,068,675,609	8.4%	258,031	2.9%	\$2,672.39	5.3%
2004/3	\$1,958,379,343		255,077		\$2,559.20	
2005/3	\$2,188,006,458	11.7%	263,747	3.4%	\$2,765.28	8.1%
2004/4	\$2,074,503,790		248,966		\$2,777.49	
2005/4	\$2,283,976,604	10.1%	259,256	4.1%	\$2,936.58	5.7%
2005/1	\$1,919,538,984		243,759		\$2,624.91	
2006/1	\$2,206,882,734	15.0%	254,302	4.3%	\$2,892.73	10.2%
2005/2	\$2,068,675,609		258,031		\$2,672.39	
2006/2	\$2,389,394,775	15.5%	268,726	4.1%	\$2,963.86	10.9%
2005/3	\$2,188,006,458		263,747		\$2,765.28	
2006/3	\$2,511,603,105	14.8%	274,060	3.9%	\$3,054.81	10.5%
2005/4	\$2,283,976,604		259,256		\$2,936.58	
2006/4	\$2,674,775,271	17.1%	270,498	4.3%	\$3,296.11	12.2%
2006/1	\$2,206,882,734		254,302		\$2,892.73	
2007/1	\$2,528,871,913	14.6%	266,599	4.8%	\$3,161.89	9.3%
2006/2	\$2,389,394,775		268,726		\$2,963.86	
2007/2	\$2,679,641,341	12.1%	278,792	3.7%	\$3,203.87	8.1%
2006/3	\$2,511,603,105		274,060		\$3,054.81	
2007/3	\$2,712,325,140	8.0%	284,317	3.7%	\$3,179.93	4.1%
2006/4	\$2,674,775,271		270,498		\$3,296.11	
2007/4	\$2,976,397,551	11.3%	280,888	3.8%	\$3,532.13	7.2%
2007/1	\$2,528,871,913		266,599		\$3,161.89	
2008/1	\$2,798,237,273	10.7%	276,195	3.6%	\$3,377.13	6.8%
2007/2	\$2,679,641,341		278,792		\$3,203.87	
2008/2	\$2,918,008,721	8.9%	287,780	3.2%	\$3,379.91	5.5%
2007/3	\$2,712,325,140		284,317		\$3,179.93	
2008/3	\$2,985,771,294	10.1%	293,895	3.4%	\$3,386.44	6.5%
2007/4	\$2,976,397,551		280,888		\$3,532.13	
2008/4	\$3,177,223,682	6.7%	287,478	2.3%	\$3,684.02	4.3%
2008/1	\$2,798,237,273		276,195		\$3,377.13	
2009/1	\$2,764,364,307	-1.2%	273,471	-1.0%	\$3,369.48	-0.2%
2008/2	\$2,918,008,721		287,780		\$3,379.91	
2009/2	\$2,773,191,493	-5.0%	277,897	-3.4%	\$3,326.40	-1.6%
2008/3	\$2,985,771,294		293,895		\$3,386.44	
2009/3	\$2,736,056,780	-8.4%	278,234	-5.3%	\$3,277.88	-3.2%
2008/4	\$3,177,223,682		287,478		\$3,684.02	
2009/4	\$2,911,594,084	-8.4%	269,439	-6.3%	\$3,602.04	-2.2%
2009/1	\$2,764,364,307		273,471		\$3,369.48	
2010/1	\$2,627,558,836	-4.9%	260,726	-4.7%	\$3,359.29	-0.3%
2009/2	\$2,773,191,493		277,897		\$3,326.40	
2010/2	\$2,802,848,365	1.1%	273,044	-1.7%	\$3,421.73	2.9%
2009/3	\$2,736,056,780		278,234		\$3,277.88	
2010/3	\$2,866,694,334	4.8%	279,429	0.4%	\$3,419.71	4.3%
2009/4	\$2,911,594,084		269,439		\$3,602.04	
2010/4	\$3,087,069,661	6.0%	272,511	1.1%	\$3,776.08	4.8%
2010/1	\$2,627,558,836		260,726		\$3,359.29	
2011/1	\$2,769,072,169	5.4%	263,558	1.1%	\$3,502.17	4.3%
2010/2	\$2,802,848,365		273,044		\$3,421.73	
2011/2	\$2,933,492,659	4.7%	275,169	0.8%	\$3,553.56	3.9%

Table continued on page 14

Table continued from page 13

Total Wages, Average Monthly Employment, and Average Monthly Wage Changes for Wyoming by Year/Quarter: 2004Q2 to 2013Q2

Year/Quarter	Total Wages	% Change	Avg. Monthly Employment	% Change	Avg. Monthly Wage	% Change
2010/3	\$2,866,694,334		279,429		\$3,419.71	
2011/3	\$3,053,914,162	6.5%	282,231	1.0%	\$3,606.87	5.5%
2010/4	\$3,087,069,661		272,511		\$3,776.08	
2011/4	\$3,165,745,021	2.5%	278,015	2.0%	\$3,795.65	0.5%
2011/1	\$2,769,072,169		263,558		\$3,502.17	
2012/1	\$2,991,246,352	8.0%	270,073	2.5%	\$3,691.90	5.4%
2011/2	\$2,933,492,659		275,169		\$3,553.56	
2012/2	\$3,074,207,136	4.8%	281,192	2.2%	\$3,644.26	2.6%
2011/3	\$3,053,914,162		282,231		\$3,606.87	
2012/3	\$3,060,122,560	0.2%	284,180	0.7%	\$3,589.42	-0.5%
2011/4	\$3,165,745,021		278,015		\$3,795.65	
2012/4	\$3,294,064,060	4.1%	278,934	0.3%	\$3,936.49	3.7%
2012/1	\$2,991,246,352		270,073		\$3,691.90	
2013/1	\$3,024,233,488	1.1%	270,881	0.3%	\$3,721.48	0.8%
2012/2	\$3,074,207,136		281,192		\$3,644.26	
2013/2(p)	\$3,091,734,238	0.6%	281,582	0.1%	\$3,659.96	0.4%

(p) Preliminary.

Source: Quarterly Census of Employment and Wages.

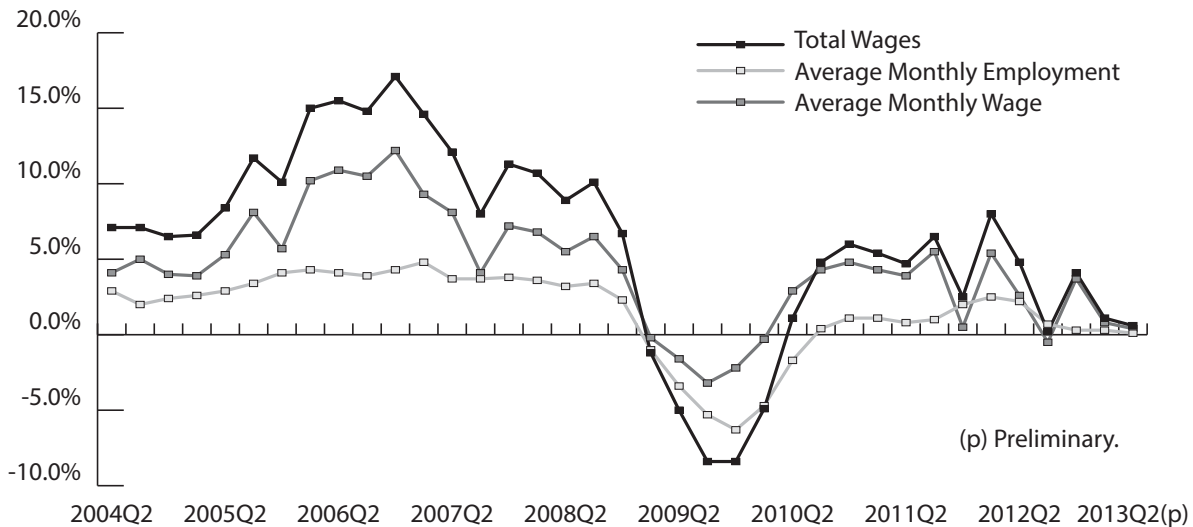


Figure: Over-the-Year Change for Total Wages, Average Monthly Employment, and Average Monthly Wage for Wyoming by Year/Quarter: 2004Q2 to 2013Q2

**NOW
ONLINE**

Occupational Projections by Industry, 2012-2022

<http://doe.state.wy.us/lmi/projections/ind-occ-prj-2012-2022/full.pdf>

Persons Working in Jobs Covered by Wyoming State Unemployment Insurance, Second Quarter 2013

by: Tony Glover, Workforce Information Supervisor

The number of new persons appearing for the first time in the Wyoming Wage Records database increased by 1.4% from second quarter 2012 to second quarter 2013. Total wages increased by 2.3% over the year.

In Wyoming in second quarter 2013, slightly less than 90% of all workers in the Wyoming Wage Records database worked one job, and their average quarterly wage was \$10,424. Persons working two jobs made up 10.1% of total persons in the database.

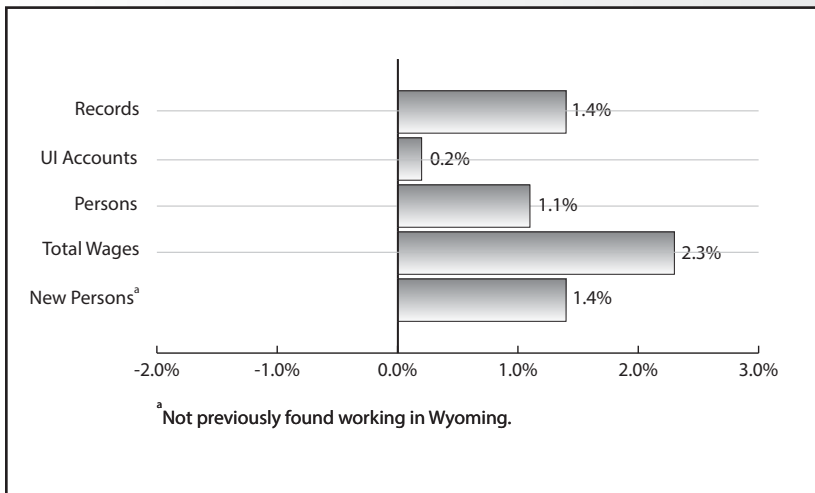


Figure 1: Percentage Change from Previous Year, Wyoming Wage Records, Second Quarter 2013

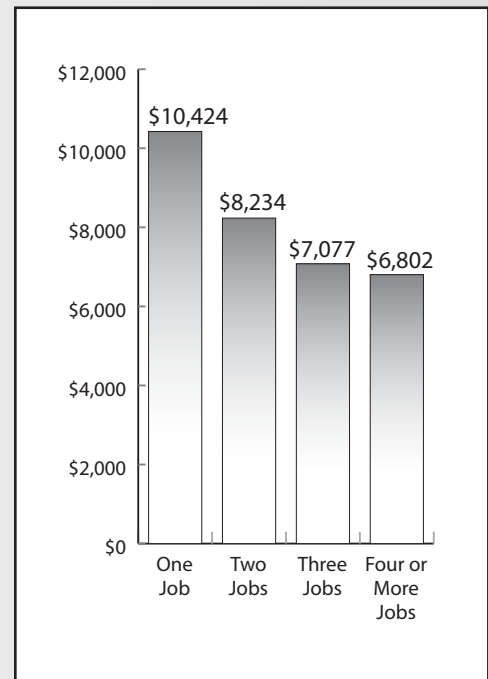


Figure 2: Mean Quarterly Wages in Wyoming by Number of Jobs, Second Quarter 2013

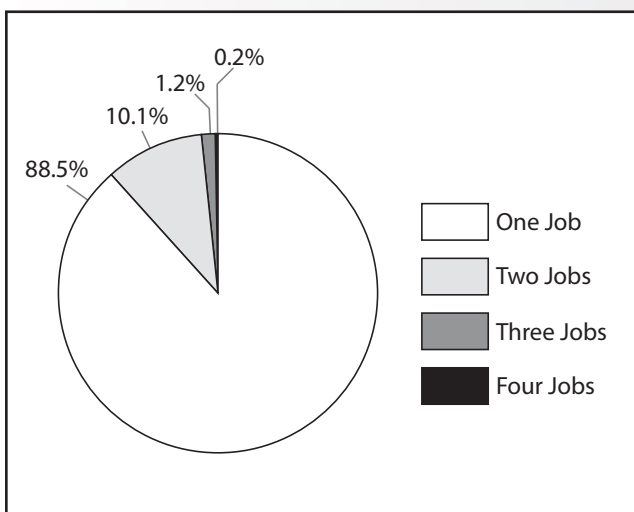


Figure 3: Percentage of Total Persons by Number of Jobs Worked in Wyoming, Second Quarter 2013

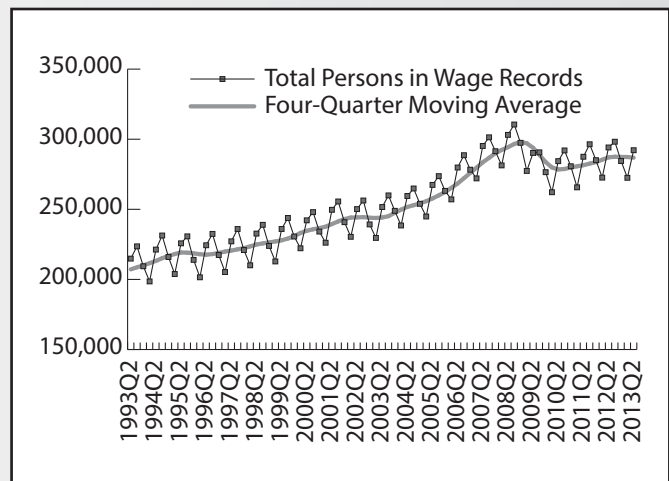


Figure 4: Running Total of Persons in Wyoming Wage Records, Second Quarter 1993 (1993Q2) to Second Quarter 2013 (2013Q2)

Quarterly Turnover Statistics by Industry, First Quarter 2013

The turnover rates in the mining and manufacturing industries decreased by 3.7% from first quarter 2012 to first quarter 2013. The turnover rate in retail trade increased over the year by 1.8%.

Major Sector Industry		(H)	(H)+(B)	(B)	(E)	(E)+(B)	(C)	(H+E+B+C)	Turnover		
		Hire Only	Total Hires	Both Hire and Exit	Exit Only	Total Exits	Continuous Employment	Total	Rate ^a	Change Prior Year	
Goods Producing	Agriculture, Forestry, Fishing, & Hunting	Transactions ^b	314	420	106	247	353	2,079	2,746	24.3%	-0.1%
		Rates	11.4	15.3	3.9	9.0	12.9	75.7	100.0		
	Mining	Transactions	2,174	2,993	819	2,328	3,147	22,896	28,217	18.9%	-3.7%
		Rates	7.7	10.6	2.9	8.3	11.2	81.1	100.0		
	Construction	Transactions	3,466	5,529	2,063	3,490	5,553	15,697	24,716	36.5%	-0.7%
		Rates	14.0	22.4	8.3	14.1	22.5	63.5	100.0		
	Manufacturing	Transactions	723	988	265	981	1,246	8,603	10,572	18.6%	-3.7%
		Rates	6.8	9.3	2.5	9.3	11.8	81.4	100.0		
	Wholesale Trade, Transp., Utilities, & Warehousing	Transactions	2,003	2,736	733	1,858	2,591	18,440	23,034	19.9%	-0.8%
		Rates	8.7	11.9	3.2	8.1	11.2	80.1	100.0		
Service Providing	Retail Trade	Transactions	3,417	4,720	1,303	5,100	6,403	24,543	34,363	28.6%	1.8%
		Rates	9.9	13.7	3.8	14.8	18.6	71.4	100.0		
	Information	Transactions	261	327	66	363	429	4,055	4,745	14.5%	-1.7%
		Rates	5.5	6.9	1.4	7.7	9.0	85.5	100.0		
	Financial Activities	Transactions	1,042	1,331	289	830	1,119	9,942	12,103	17.9%	0.4%
		Rates	8.6	11.0	2.4	6.9	9.2	82.1	100.0		
	Professional & Business Services	Transactions	2,732	4,286	1,554	2,303	3,857	14,843	21,432	30.7%	-2.7%
		Rates	12.7	20.0	7.3	10.7	18.0	69.3	100.0		
	Educational Services	Transactions	1,904	2,555	651	1,335	1,986	28,778	32,668	11.9%	-0.5%
		Rates	5.8	7.8	2.0	4.1	6.1	88.1	100.0		
Health Services	Transactions	3,054	3,787	733	2,781	3,514	29,016	35,584	18.5%	0.2%	
	Rates	8.6	10.6	2.1	7.8	9.9	81.5	100.0			
Leisure & Hospitality	Transactions	6,037	9,173	3,136	6,149	9,285	24,848	40,170	38.1%	0.3%	
	Rates	15.0	22.8	7.8	15.3	23.1	61.9	100.0			
Other Services	Transactions	1,062	1,457	395	1,020	1,415	7,136	9,613	25.8%	-3.3%	
	Rates	11.0	15.2	4.1	10.6	14.7	74.2	100.0			
Public Admin.	Transactions	1,169	1,566	397	1,004	1,401	19,042	21,612	11.9%	0.5%	
	Rates	5.4	7.2	1.8	4.6	6.5	88.1	100.0			
Unclassified	Transactions	60	106	46	91	137	78	275	71.6%	16.2%	
	Rates	21.8	38.5	16.7	33.1	49.8	28.4	100.0			
Total	Transactions	29,418	41,974	12,556	29,880	42,436	229,996	301,850	23.8%	-0.7%	
	Rates	9.7	13.9	4.2	9.9	14.1	76.2	100.0			

(H) Hire Only. (B) Both Hire and Exit. (E) Exit Only. (C) Continuous Employment.

^aTurnover rate equals (H+E+B)/Total.

^bJobs worked at any time during the quarter.

Historical turnover data can be found online at <http://doe.state.wy.us/LMI/turnover.htm>.

Wyoming Unemployment Rate Stable at 4.6% in August 2013

by: David Bullard, Senior Economist

The Research & Planning section of the Wyoming Department of Workforce Services reported that the state’s seasonally adjusted¹ unemployment rate was 4.6% in August. It has remained at that level since May. Wyoming’s unemployment rate decreased from its year-ago level of 5.4% and was significantly lower than the current U.S. unemployment rate of 7.3%. Seasonally adjusted employment of Wyoming residents fell slightly, decreasing by 444 individuals (-0.2%) from July to August.

Across Wyoming, county unemployment rates followed their normal seasonal pattern and fell slightly, or were unchanged from July to August. The largest decreases were seen in Goshen (down from 5.0% to 4.6%), Weston (down from 4.0% to 3.7%), Sheridan (down from 4.7% to 4.4%), and

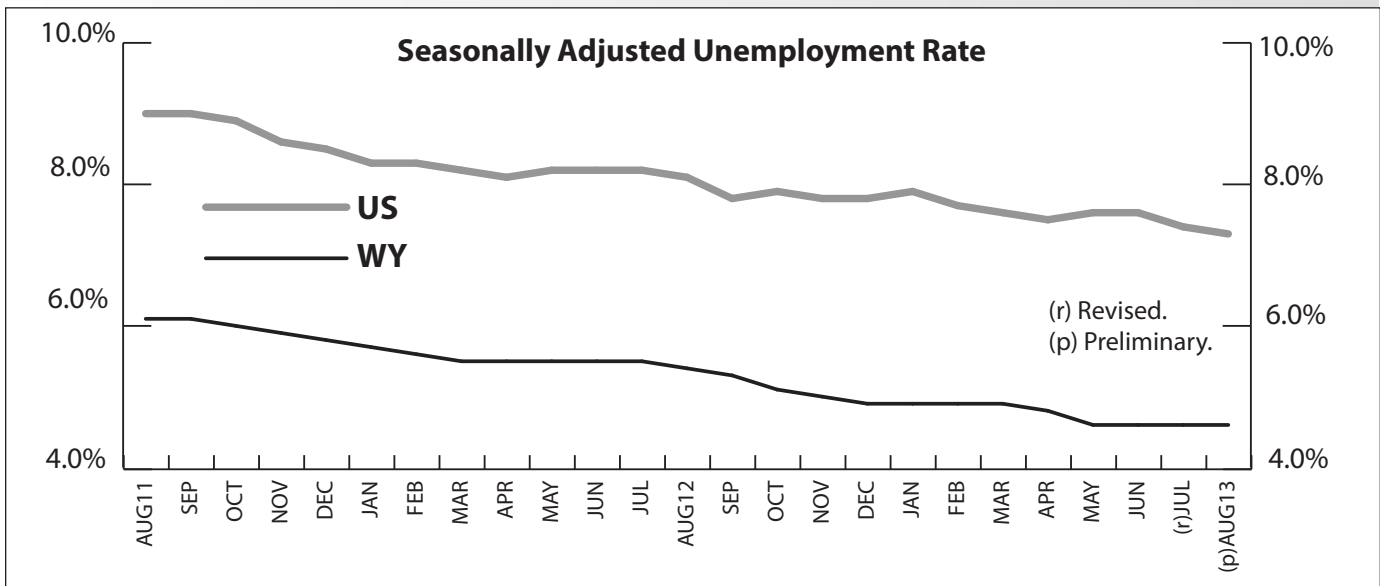
Lincoln (down from 4.9% to 4.6%) counties.

Sublette County posted the lowest unemployment rate in August (3.0%). It was followed by Teton and Converse counties (both 3.1%), and Campbell and Niobrara counties (both 3.5%). The highest unemployment rates were found in Fremont (5.5%), Big Horn (4.8%), and Platte (4.7%) counties.

From August 2012 to August 2013, unemployment rates fell in every county, suggesting modest improvement in the state’s economy. The largest decreases occurred in Lincoln (down from 6.6% to 4.6%) and Laramie (down from 5.8% to 4.4%) counties. Unemployment fell by one percentage point or more in Platte, Crook, Big Horn, Sheridan, Carbon, Uinta, and Goshen counties.

Total nonfarm employment (measured by place of work) rose from 296,600 in August 2012 to 300,200 in August 2013, a gain of 3,600 jobs (1.2%).

¹ Seasonal adjustment is a statistical procedure to remove the impact of normal regularly recurring events (such as weather, major holidays, and the opening and closing of schools) from economic time series to better understand changes in economic conditions from month to month.



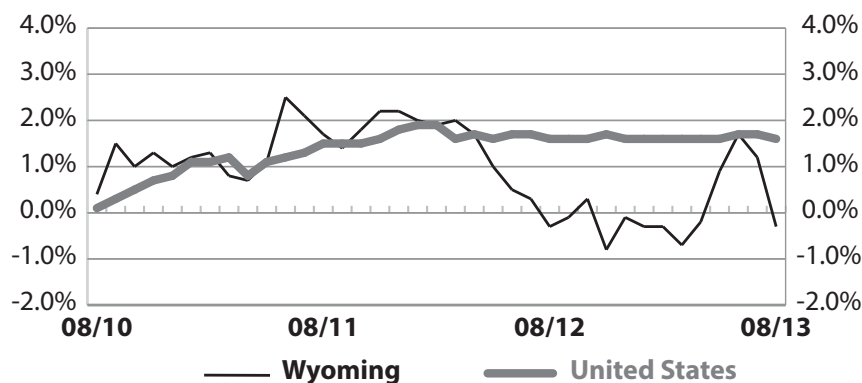
Current Employment Statistics (CES) Estimates and Research & Planning's Short-Term Projections, August 2013

by: David Bullard, Senior Economist

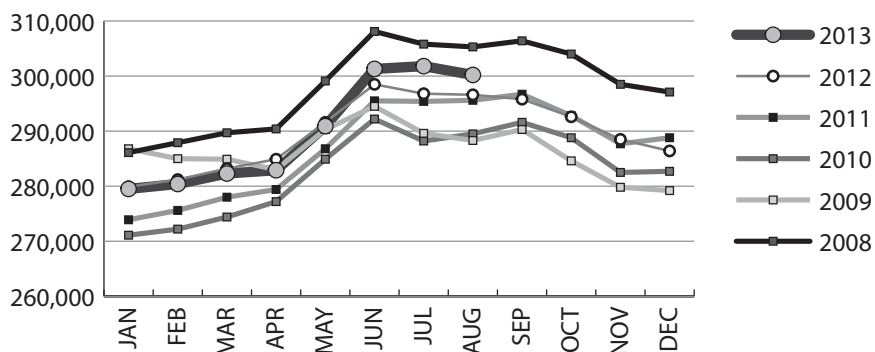
Industry Sector	Research & Planning's Short-Term Projections	Current Employment Statistics (CES) Estimates	N Difference	% Difference
Total Nonfarm	299,800	300,200	400	0.1%
Natural Resources & Mining	27,067	26,000	-1,067	-4.1%
Construction	24,411	25,900	1,489	5.7%
Manufacturing	9,607	9,700	93	1.0%
Wholesale Trade	9,278	9,800	522	5.3%
Retail Trade	30,796	31,200	404	1.3%
Transportation & Utilities	15,235	15,300	65	0.4%
Information	3,887	3,900	13	0.3%
Financial Activities	11,241	10,600	-641	-6.0%
Professional & Business Services	19,126	18,900	-226	-1.2%
Educational & Health Services	26,968	26,800	-168	-0.6%
Leisure & Hospitality	40,673	41,500	827	2.0%
Other Services	10,853	10,900	47	0.4%
Government	70,658	69,700	-958	-1.4%

Projections were run in August 2013 and based on QCEW data through March 2013.

Nonagricultural Employment Growth (Percentage Change Over Previous Year)



Wyoming Nonagricultural Wage and Salary Employment



State Unemployment Rates August 2013 (Seasonally Adjusted)

State	Unemp. Rate
Puerto Rico	13.9
Nevada	9.5
Illinois	9.2
Rhode Island	9.1
Michigan	9.0
California	8.9
District of Columbia	8.7
Georgia	8.7
North Carolina	8.7
Mississippi	8.5
New Jersey	8.5
Tennessee	8.5
Kentucky	8.4
Arizona	8.3
Connecticut	8.1
Indiana	8.1
Oregon	8.1
South Carolina	8.1
Pennsylvania	7.7
New York	7.6
Arkansas	7.4
Delaware	7.3
Ohio	7.3
United States	7.3
Massachusetts	7.2
Missouri	7.2
Colorado	7.0
Florida	7.0
Louisiana	7.0
Maine	7.0
Maryland	7.0
Washington	7.0
Idaho	6.8
New Mexico	6.8
Wisconsin	6.7
Alaska	6.5
Texas	6.4
Alabama	6.3
West Virginia	6.3
Kansas	5.9
Virginia	5.8
Montana	5.3
Oklahoma	5.3
Minnesota	5.1
New Hampshire	5.0
Iowa	4.9
Utah	4.7
Vermont	4.6
Wyoming	4.6
Hawaii	4.3
Nebraska	4.2
South Dakota	3.8
North Dakota	3.0

Wyoming Nonagricultural Wage and Salary Employment

by: David Bullard, Senior Economist

	Employment in Thousands			Percent Change Total Employment	
	Aug 2013	Jul 2013	Aug 2012	Jul 2013	Aug 2012
	Aug 2013	Jul 2013	Aug 2012	Aug 2013	Aug 2013
CAMPBELL COUNTY					
TOTAL NONAG. WAGE & SALARY EMPLOYMENT	28.0	27.7	27.9	1.1	0.4
TOTAL PRIVATE	23.8	23.7	23.8	0.4	0.0
GOODS PRODUCING	11.2	11.2	11.3	0.0	-0.9
Natural Resources & Mining	8.2	8.2	8.3	0.0	-1.2
Construction	2.5	2.5	2.5	0.0	0.0
Manufacturing	0.5	0.5	0.5	0.0	0.0
SERVICE PROVIDING	16.8	16.5	16.6	1.8	1.2
Trade, Transportation, & Utilities	5.6	5.6	5.6	0.0	0.0
Information	0.2	0.2	0.2	0.0	0.0
Financial Activities	0.7	0.7	0.7	0.0	0.0
Professional & Business Services	1.8	1.7	1.8	5.9	0.0
Educational & Health Services	1.1	1.1	1.0	0.0	10.0
Leisure & Hospitality	2.2	2.2	2.2	0.0	0.0
Other Services	1.0	1.0	1.0	0.0	0.0
GOVERNMENT	4.2	4.0	4.1	5.0	2.4

	Employment in Thousands			Percent Change Total Employment	
	Aug 2013	Jul 2013	Aug 2012	Jul 2013	Aug 2012
	Aug 2013	Jul 2013	Aug 2012	Aug 2013	Aug 2013
SWEETWATER COUNTY					
TOTAL NONAG. WAGE & SALARY EMPLOYMENT	25.5	25.1	25.6	1.6	-0.4
TOTAL PRIVATE	20.9	20.9	21.1	0.0	-0.9
GOODS PRODUCING	9.0	9.0	9.5	0.0	-5.3
Natural Resources & Mining	5.7	5.8	6.1	-1.7	-6.6
Construction	1.9	1.8	1.9	5.6	0.0
Manufacturing	1.4	1.4	1.5	0.0	-6.7
SERVICE PROVIDING	16.5	16.1	16.1	2.5	2.5
Trade, Transportation, & Utilities	5.1	5.1	5.1	0.0	0.0
Information	0.2	0.2	0.2	0.0	0.0
Financial Activities	0.9	0.9	0.8	0.0	12.5
Professional & Business Services	1.2	1.2	1.1	0.0	9.1
Educational & Health Services	1.2	1.2	1.1	0.0	9.1
Leisure & Hospitality	2.6	2.6	2.6	0.0	0.0
Other Services	0.7	0.7	0.7	0.0	0.0
GOVERNMENT	4.6	4.2	4.5	9.5	2.2

	Employment in Thousands			Percent Change Total Employment	
	Aug 2013	Jul 2013	Aug 2012	Jul 2013	Aug 2012
	Aug 2013	Jul 2013	Aug 2012	Aug 2013	Aug 2013
TETON COUNTY					
TOTAL NONAG. WAGE & SALARY EMPLOYMENT	21.1	21.3	20.6	-0.9	2.4
TOTAL PRIVATE	18.9	19.0	18.4	-0.5	2.7
GOODS PRODUCING	2.1	2.1	1.9	0.0	10.5
Natural Resources, Mining & Construction	2.0	2.0	1.8	0.0	11.1
Manufacturing	0.1	0.1	0.1	0.0	0.0
SERVICE PROVIDING	19.0	19.2	18.7	-1.0	1.6
Trade, Transportation, & Utilities	2.7	2.7	2.6	0.0	3.8
Information	0.2	0.2	0.2	0.0	0.0
Financial Activities	0.9	0.9	0.9	0.0	0.0
Professional & Business Services	1.9	1.9	1.8	0.0	5.6
Educational & Health Services	1.2	1.1	1.1	9.1	9.1
Leisure & Hospitality	9.4	9.6	9.4	-2.1	0.0
Other Services	0.5	0.5	0.5	0.0	0.0
GOVERNMENT	2.2	2.3	2.2	-4.3	0.0

State Unemployment Rates August 2013 (Not Seasonally Adjusted)

State	Unemp. Rate
Puerto Rico	14.9
Nevada	9.4
Rhode Island	9.4
Illinois	9.0
California	8.8
Arizona	8.7
Michigan	8.7
District of Columbia	8.5
Mississippi	8.4
Georgia	8.3
New Jersey	8.3
North Carolina	8.3
Tennessee	8.3
South Carolina	8.2
Connecticut	8.1
Kentucky	7.8
Pennsylvania	7.8
Oregon	7.7
Indiana	7.5
New York	7.5
United States	7.3
Arkansas	7.2
Florida	7.1
Louisiana	7.1
Missouri	7.1
Delaware	6.9
Ohio	6.9
Massachusetts	6.8
Washington	6.8
Alabama	6.7
Colorado	6.7
Maryland	6.7
New Mexico	6.6
Idaho	6.4
Maine	6.3
Texas	6.3
Wisconsin	6.2
West Virginia	6.1
Kansas	5.9
Alaska	5.7
Virginia	5.6
Oklahoma	5.0
Minnesota	4.8
Montana	4.8
New Hampshire	4.8
Utah	4.8
Iowa	4.6
Hawaii	4.2
Wyoming	4.1
Vermont	3.9
Nebraska	3.8
South Dakota	3.6
North Dakota	2.7

Economic Indicators

by: David Bullard, Senior Economist

The consumer price index rose 1.5% from August 2012 to August 2013.

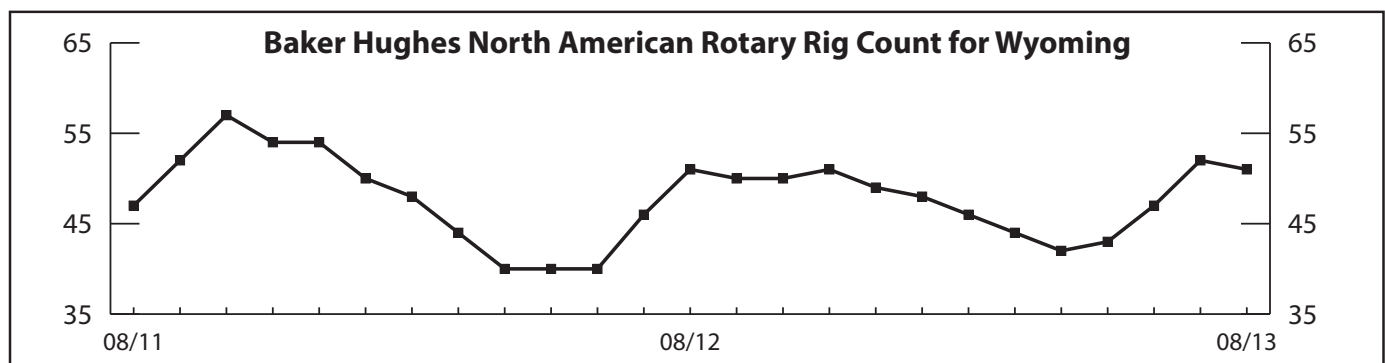
	Aug 2013 (p)	Jul 2013 (r)	Aug 2012 (b)	Percent Change Month	Year
Wyoming Total Nonfarm Employment	300,200	301,800	296,600	-0.5	1.2
Wyoming State Government	16,100	16,500	16,200	-2.4	-0.6
Laramie County Nonfarm Employment	46,800	47,600	45,300	-1.7	3.3
Natrona County Nonfarm Employment	41,800	42,000	41,500	-0.5	0.7
Selected U.S. Employment Data					
U.S. Multiple Jobholders	6,776,000	6,897,000	6,635,000	-1.8	2.1
As a percent of all workers	4.7%	4.8%	4.7%	N/A	N/A
U.S. Discouraged Workers	866,000	988,000	844,000	-12.3	2.6
U.S. Part Time for Economic Reasons	7,690,000	8,324,000	7,842,000	-7.6	-1.9
Wyoming Unemployment Insurance					
Weeks Compensated	12,791	16,013	15,070	-20.1	-15.1
Benefits Paid	\$4,623,227	\$5,766,129	\$5,214,792	-19.8	-11.3
Average Weekly Benefit Payment	\$361.44	\$360.09	\$346.04	0.4	4.5
State Insured Covered Jobs ¹	274,280	273,463	270,433	0.3	1.4
Insured Unemployment Rate	1.8%	1.9%	2.0%	N/A	N/A
Consumer Price Index (U) for All U.S. Urban Consumers (1982 to 1984 = 100)					
All Items	233.9	233.6	230.4	0.1	1.5
Food & Beverages	237.3	237.0	234.0	0.2	1.4
Housing	228.6	228.4	223.7	0.1	2.2
Apparel	125.8	124.2	123.6	1.2	1.8
Transportation	219.2	220.0	219.1	-0.4	0.0
Medical Care	426.9	424.8	417.1	0.5	2.3
Recreation (Dec. 1997=100)	115.3	115.4	114.9	0.0	0.4
Education & Communication (Dec. 1997=100)	136.1	135.3	134.0	0.6	1.6
Other Goods & Services	402.4	401.5	396.2	0.2	1.6
Producer Prices (1982 to 1984 = 100)					
All Commodities	204.3	204.6	202.7	-0.1	0.8
Wyo. Bldg. Permits (New Privately Owned Housing Units Authorized)					
Total Units	167	193	332	-13.5	-49.7
Valuation	\$41,402,000	\$50,108,000	\$60,010,000	-17.4	-31.0
Single Family Homes	136	160	164	-15.0	-17.1
Valuation	\$39,414,000	\$47,947,000	\$48,835,000	-17.8	-19.3
Casper MSA ² Building Permits	50	51	194	-2.0	-74.2
Valuation	\$7,375,000	\$7,348,000	\$17,292,000	0.4	-57.4
Cheyenne MSA Building Permits	37	54	46	-31.5	-19.6
Valuation	\$6,031,000	\$7,942,000	\$7,529,000	-24.1	-19.9
Baker Hughes North American Rotary Rig Count for Wyoming	51	52	51	-1.9	0.0

(p) Preliminary. (r) Revised. (b) Benchmarked.

¹Local Area Unemployment Statistics Program estimates.

²Metropolitan Statistical Area.

Note: Production worker hours and earnings data have been dropped from the Economic Indicators page because of problems with accuracy due to a small sample size and high item nonresponse. The U.S. Bureau of Labor Statistics will continue to publish these data online at <http://www.bls.gov/eag/eag.wy.htm>.



Wyoming County Unemployment Rates

by: *Carola Cowan, BLS Programs Supervisor*

From August 2012 to August 2013, unemployment rates fell in every county, suggesting modest improvement in the state's economy.

REGION	Labor Force			Employed			Unemployed			Unemployment Rates		
	Aug	Jul	Aug	Aug	Jul	Aug	Aug	Jul	Aug	Aug	Jul	Aug
County	2013	2013	2012	2013	2013	2012	2013	2013	2012	2013	2013	2012
	(p)	(r)	(b)	(p)	(r)	(b)	(p)	(r)	(b)	(p)	(r)	(b)
NORTHWEST	48,935	49,346	49,730	46,629	46,915	46,964	2,306	2,431	2,766	4.7	4.9	5.6
Big Horn	5,234	5,222	5,267	4,984	4,961	4,951	250	261	316	4.8	5.0	6.0
Fremont	19,980	19,939	20,166	18,877	18,776	18,891	1,103	1,163	1,275	5.5	5.8	6.3
Hot Springs	2,593	2,613	2,642	2,488	2,507	2,524	105	106	118	4.0	4.1	4.5
Park	16,862	17,259	17,271	16,204	16,553	16,435	658	706	836	3.9	4.1	4.8
Washakie	4,266	4,313	4,384	4,076	4,118	4,163	190	195	221	4.5	4.5	5.0
NORTHEAST	54,885	54,952	54,761	52,769	52,698	52,141	2,116	2,254	2,620	3.9	4.1	4.8
Campbell	27,681	27,611	27,605	26,721	26,600	26,419	960	1,011	1,186	3.5	3.7	4.3
Crook	3,650	3,640	3,634	3,518	3,498	3,458	132	142	176	3.6	3.9	4.8
Johnson	4,246	4,274	4,092	4,052	4,069	3,881	194	205	211	4.6	4.8	5.2
Sheridan	16,045	16,186	16,113	15,335	15,419	15,219	710	767	894	4.4	4.7	5.5
Weston	3,263	3,241	3,317	3,143	3,112	3,164	120	129	153	3.7	4.0	4.6
SOUTHWEST	67,401	67,331	67,196	64,929	64,725	64,129	2,472	2,606	3,067	3.7	3.9	4.6
Lincoln	8,141	8,168	7,904	7,767	7,768	7,380	374	400	524	4.6	4.9	6.6
Sublette	6,819	6,775	7,193	6,616	6,557	6,923	203	218	270	3.0	3.2	3.8
Sweetwater	25,253	24,956	25,285	24,321	23,979	24,195	932	977	1,090	3.7	3.9	4.3
Teton	15,854	16,173	15,739	15,358	15,644	15,119	496	529	620	3.1	3.3	3.9
Uinta	11,334	11,259	11,075	10,867	10,777	10,512	467	482	563	4.1	4.3	5.1
SOUTHEAST	77,529	78,998	76,014	74,205	75,571	71,835	3,324	3,427	4,179	4.3	4.3	5.5
Albany	18,894	19,274	18,749	18,177	18,532	17,867	717	742	882	3.8	3.8	4.7
Goshen	6,447	6,415	6,479	6,148	6,093	6,116	299	322	363	4.6	5.0	5.6
Laramie	46,572	47,692	45,489	44,514	45,588	42,840	2,058	2,104	2,649	4.4	4.4	5.8
Niobrara	1,383	1,371	1,336	1,334	1,320	1,283	49	51	53	3.5	3.7	4.0
Platte	4,233	4,246	3,961	4,032	4,038	3,729	201	208	232	4.7	4.9	5.9
CENTRAL	60,908	61,462	60,463	58,561	59,034	57,612	2,347	2,428	2,851	3.9	4.0	4.7
Carbon	8,270	8,299	8,099	7,936	7,971	7,690	334	328	409	4.0	4.0	5.1
Converse	8,438	8,380	8,131	8,178	8,103	7,802	260	277	329	3.1	3.3	4.0
Natrona	44,200	44,783	44,233	42,447	42,960	42,120	1,753	1,823	2,113	4.0	4.1	4.8
STATEWIDE	309,658	312,086	308,165	297,092	298,943	292,682	12,566	13,143	15,483	4.1	4.2	5.0

Statewide Seasonally Adjusted 4.6 4.6 5.4

U.S..... 7.3 7.7 8.2

U.S. Seasonally Adjusted..... 7.3 7.4 8.1

Prepared in cooperation with the Bureau of Labor Statistics. Benchmarked 02/2013. Run Date 09/2013.

Data are not seasonally adjusted except where otherwise specified.

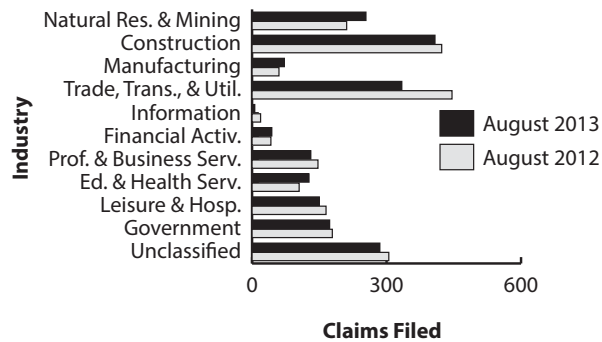
(p) Preliminary. (r) Revised. (b) Benchmarked.

Wyoming Normalized^a Unemployment Insurance Statistics: Initial Claims

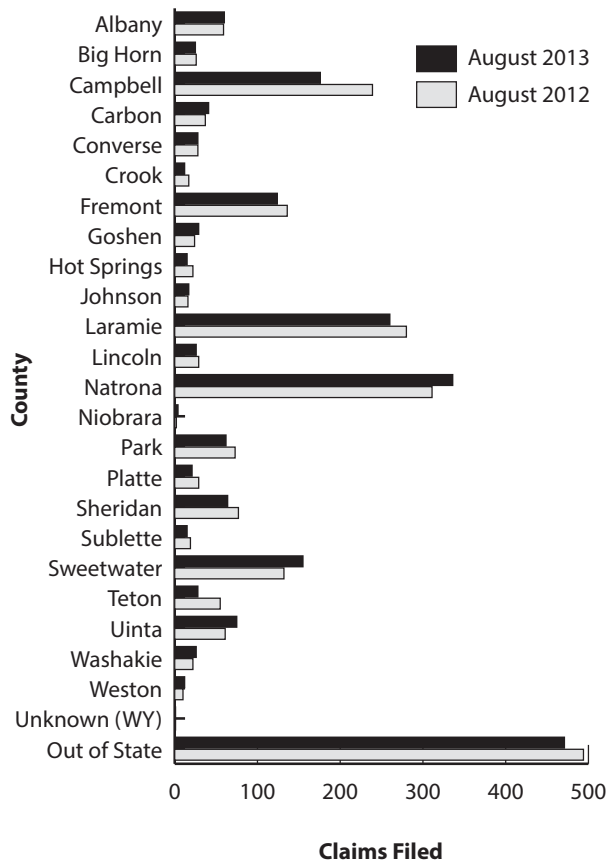
by: *Patrick Harris, Principal Economist*

Initial claims decreased slightly over the year (5.2%) with significant decreases in local education (35.5%) and trade, transportation, & utilities (25.1%).

Initial Unemployment Insurance Claims by Industry, August 2013



Initial Unemployment Insurance Claims by County, August 2013



INITIAL CLAIMS

	Claims Filed			% Change	
	Aug 13	Jul 13	Aug 12	Aug 13	Aug 12
Wyoming Statewide					
TOTAL CLAIMS FILED	2,082	2,085	2,197	-0.1	-5.2
TOTAL GOODS-PRODUCING	736	668	696	10.2	5.7
Natural Res. & Mining	254	237	211	7.2	20.4
Mining	246	233	197	5.6	24.9
Oil & Gas Extraction	12	13	13	-7.7	-7.7
Construction	408	365	423	11.8	-3.5
Manufacturing	72	64	60	12.5	20.0
TOTAL SERVICE-PROVIDING	887	915	1,015	-3.1	-12.6
Trade, Transp., & Utilities	334	369	446	-9.5	-25.1
Wholesale Trade	147	140	187	5.0	-21.4
Retail Trade	117	152	162	-23.0	-27.8
Transp., Warehousing & Utilities	70	77	97	-9.1	-27.8
Information	6	8	19	-25.0	-68.4
Financial Activities	44	46	42	-4.3	4.8
Prof. & Business Svcs.	131	142	147	-7.7	-10.9
Educational & Health Svcs.	127	132	105	-3.8	21.0
Leisure & Hospitality	150	143	165	4.9	-9.1
Other Svcs., exc. Public Admin.	88	68	84	29.4	4.8
TOTAL GOVERNMENT	173	208	179	-16.8	-3.4
Federal Government	32	39	40	-17.9	-20.0
State Government	27	27	21	0.0	28.6
Local Government	113	141	116	-19.9	-2.6
Local Education	20	40	31	-50.0	-35.5
UNCLASSIFIED	285	292	305	-2.4	-6.6

Laramie County

	259	259	279	0.0	-7.2
TOTAL CLAIMS FILED	259	259	279	0.0	-7.2
TOTAL GOODS-PRODUCING	81	71	65	14.1	24.6
Construction	67	55	58	21.8	15.5
TOTAL SERVICE-PROVIDING	148	148	178	0.0	-16.9
Trade, Transp., & Utilities	54	52	63	3.8	-14.3
Financial Activities	10	14	9	-28.6	11.1
Prof. & Business Svcs.	19	33	31	-42.4	-38.7
Educational & Health Svcs.	26	30	16	-13.3	62.5
Leisure & Hospitality	28	12	32	133.3	-12.5
TOTAL GOVERNMENT	22	25	23	-12.0	-4.3
UNCLASSIFIED	7	14	12	-50.0	-41.7

Natrona County

	335	297	310	12.8	8.1
TOTAL CLAIMS FILED	335	297	310	12.8	8.1
TOTAL GOODS-PRODUCING	128	92	76	39.1	68.4
Construction	50	34	39	47.1	28.2
TOTAL SERVICE-PROVIDING	185	187	211	-1.1	-12.3
Trade, Transp., & Utilities	78	80	114	-2.5	-31.6
Financial Activities	8	1	6	700.0	33.3
Prof. & Business Svcs.	23	23	32	0.0	-28.1
Educational & Health Svcs.	21	25	24	-16.0	-12.5
Leisure & Hospitality	17	41	21	-58.5	-19.0
TOTAL GOVERNMENT	15	8	13	87.5	15.4
UNCLASSIFIED	6	8	9	-25.0	-33.3

^aAn average month is considered 4.33 weeks. If a month has four weeks, the normalization factor is 1.0825. If the month has five weeks, the normalization factor is 0.866. The number of raw claims is multiplied by the normalization factor to achieve the normalized claims counts.

Wyoming Normalized^a Unemployment Insurance Statistics: Continued Claims

by: *Patrick Harris, Principal Economist*

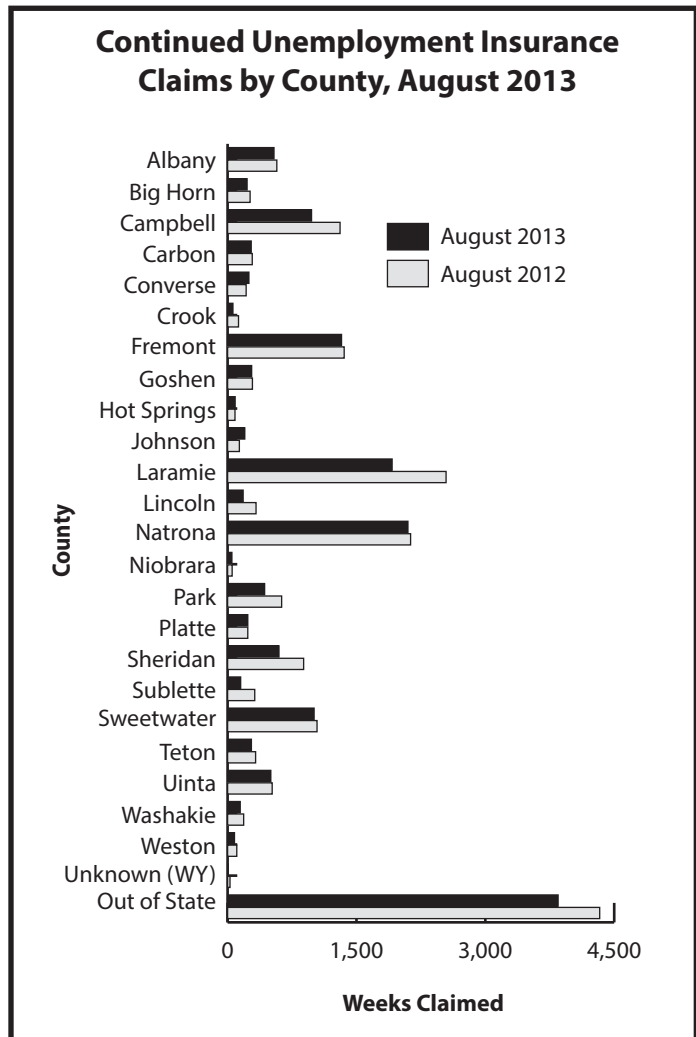
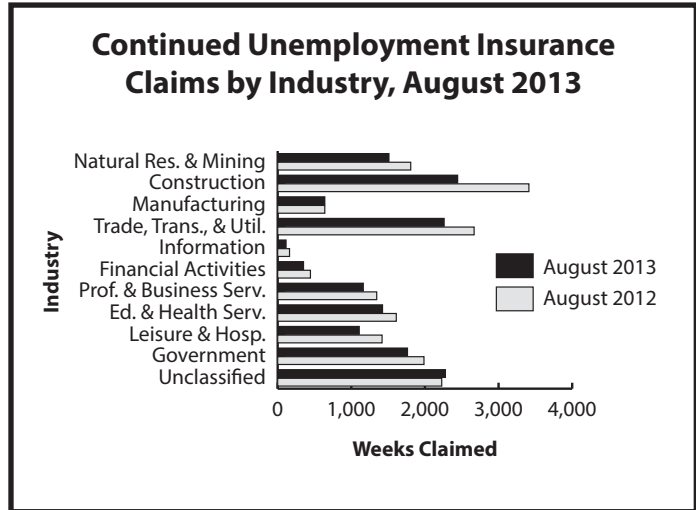
Continued claims decreased significantly over the year (14.0%). Only two industries saw an increase: Other services, except public administration (19.6%) and unclassified (2.2%).

CONTINUED CLAIMS	% Change Weeks Claimed				
	Continued Weeks Claimed		Jul 13	Aug 13	
	Aug 13	Jul 13	Aug 12	Aug 13	Aug 12

Wyoming Statewide					
TOTAL WEEKS CLAIMED	15,748	16,525	18,302	-4.7	-14.0
EXTENDED WEEKS CLAIMED	3,034	3,203	5,742	-5.3	-47.2
TOTAL UNIQUE CLAIMANTS^b	4,485	4,087	4,419	9.7	1.5
<i>Benefit Exhaustions</i>	<i>387</i>	<i>440</i>	<i>440</i>	<i>-12.0</i>	<i>-12.0</i>
<i>Benefit Exhaustion Rates</i>	<i>8.6%</i>	<i>10.8%</i>	<i>10.0%</i>	<i>-2.1%</i>	<i>-1.3%</i>
TOTAL GOODS-PRODUCING	4,596	5,022	5,861	-8.5	-21.6
Natural Res. & Mining	1,511	1,737	1,807	-13.0	-16.4
Mining	1,419	1,628	1,667	-12.8	-14.9
Oil & Gas Extraction	145	149	169	-2.7	-14.2
Construction	2,444	2,581	3,412	-5.3	-28.4
Manufacturing	640	703	640	-9.0	0.0
TOTAL SERVICE-PROVIDING	7,109	7,455	8,226	-4.6	-13.6
Trade, Transp., & Utilities	2,261	2,275	2,668	-0.6	-15.3
Wholesale Trade	526	445	598	18.2	-12.0
Retail Trade	1,213	1,218	1,419	-0.4	-14.5
Transp., Warehousing & Utilities	522	612	651	-14.7	-19.8
Information	114	147	161	-22.4	-29.2
Financial Activities	351	356	445	-1.4	-21.1
Prof. & Business Services	1,163	1,259	1,345	-7.6	-13.5
Educational & Health Svcs.	1,424	1,465	1,611	-2.8	-11.6
Leisure & Hospitality	1,108	1,285	1,418	-13.8	-21.9
Other Svcs., exc. Public Adm.	683	661	571	3.3	19.6
TOTAL GOVERNMENT	1,763	1,686	1,987	4.6	-11.3
Federal Government	285	297	307	-4.0	-7.2
State Government	226	196	277	15.3	-18.4
Local Government	1,251	1,192	1,402	4.9	-10.8
Local Education	376	420	454	-10.5	-17.2
UNCLASSIFIED	2,278	2,361	2,228	-3.5	2.2

Laramie County					
TOTAL WEEKS CLAIMED	1,914	1,905	2,543	0.5	-24.7
TOTAL UNIQUE CLAIMANTS	547	465	614	17.6	-10.9
TOTAL GOODS-PRODUCING	400	355	456	12.7	-12.3
Construction	290	259	328	12.0	-11.6
TOTAL SERVICE-PROVIDING	1,188	1,214	1,633	-2.1	-27.3
Trade, Transp., & Utilities	361	385	506	-6.2	-28.7
Financial Activities	72	72	113	0.0	-36.3
Prof. & Business Svcs.	229	218	304	5.0	-24.7
Educational & Health Svcs.	345	309	325	11.7	6.2
Leisure & Hospitality	122	166	272	-26.5	-55.1
TOTAL GOVERNMENT	235	252	359	-6.7	-34.5
UNCLASSIFIED	89	81	94	9.9	-5.3

Natrona County					
TOTAL WEEKS CLAIMED	2,098	2,164	2,130	-3.0	-1.5
TOTAL UNIQUE CLAIMANTS	631	530	523	19.1	20.7
TOTAL GOODS-PRODUCING	558	685	592	-18.5	-5.7
Construction	186	226	267	-17.7	-30.3
TOTAL SERVICE-PROVIDING	1,385	1,344	1,343	3.1	3.1
Trade, Transp., & Utilities	404	324	414	24.7	-2.4
Financial Activities	55	68	53	-19.1	3.8
Professional & Business Svcs.	279	332	266	-16.0	4.9
Educational & Health Svcs.	220	241	341	-8.7	-35.5
Leisure & Hospitality	215	160	180	34.4	19.4
TOTAL GOVERNMENT	98	84	124	16.7	-21.0
UNCLASSIFIED	56	51	70	9.8	-20.0



^aAn average month is considered 4.33 weeks. If a month has four weeks, the normalization factor is 1.0825. If the month has five weeks, the normalization factor is 0.866. The number of raw claims is multiplied by the normalization factor to achieve the normalized claims counts.
^bDoes not include claimants receiving extended benefits.

**Wyoming Department of Workforce
Services, Research & Planning
P.O. Box 2760
Casper, WY 82602**

**Official Business
Penalty for Private Use \$300
Return Service Requested**

[7]