

Wyoming Labor Market Information – There's a Website for That!



Research & Planning
Wyoming DWS

Presented by Sara Saulcy,
Senior Economist
Wyoming Department of
Workforce Services
Research & Planning Section
June 15, 2012

Who Is Research & Planning?

OUR ORGANIZATION:

R&P is a separate, exclusively statistical entity.

WHAT WE DO:

R&P collects, analyzes, and publishes timely and accurate labor market information (LMI) meeting established statistical standards.

OUR CUSTOMERS:

LMI makes the labor market more efficient by providing the public and the public's representatives with the basis for informed decision making.

Presentation Road Map

- Overview of recent and current economic conditions
- Resources from R&P which can be used to help your business
- Other data and information resources



Recent & Current Economic Conditions

© MARK ANDERSON

WWW.ANDERSTOONS.COM



"Due to recent economic conditions, picture worth has dropped to an all time low of 842 words."

Figure: Wyoming and U.S. Monthly Unemployment Rates, 2010-2012

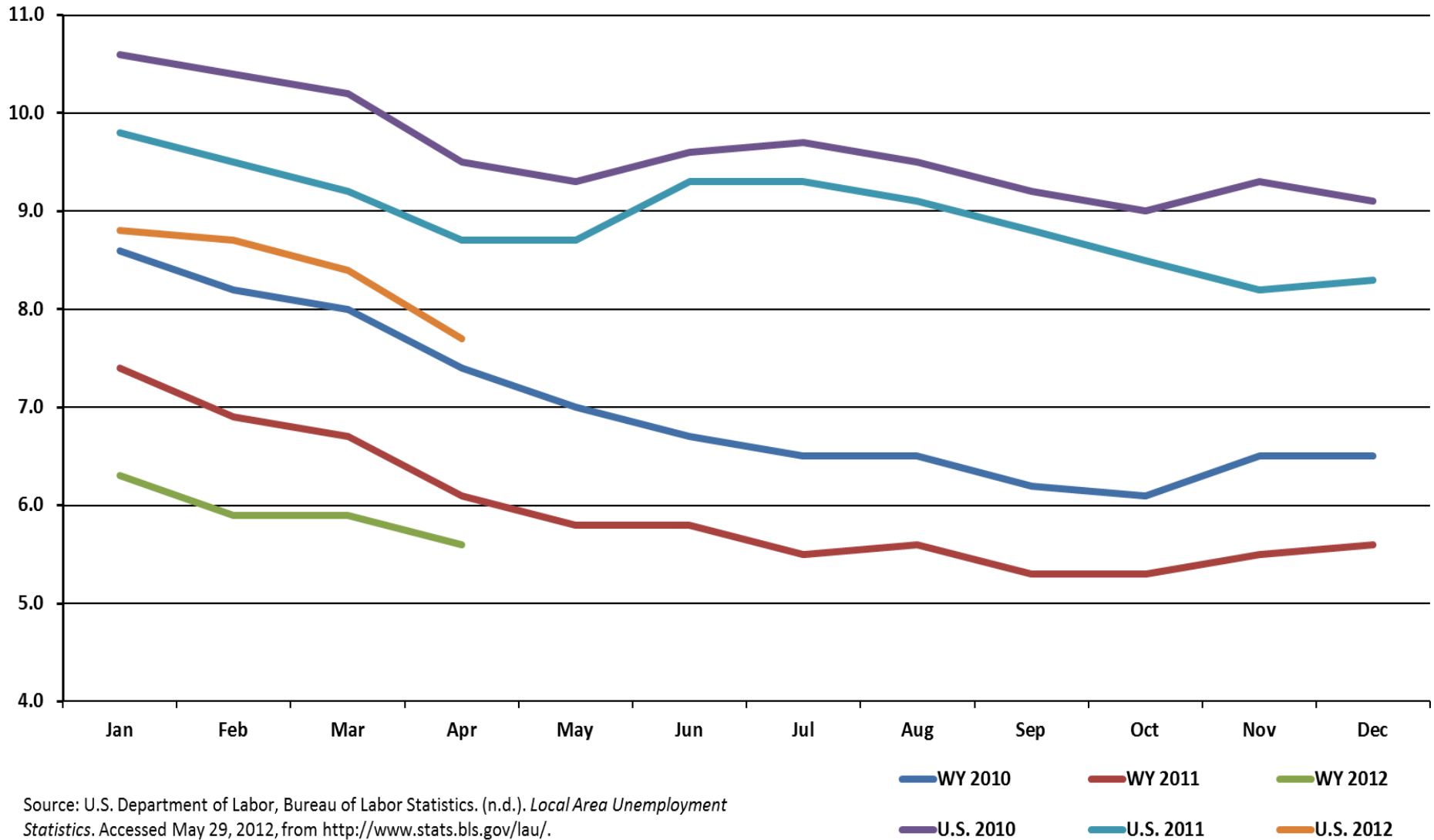
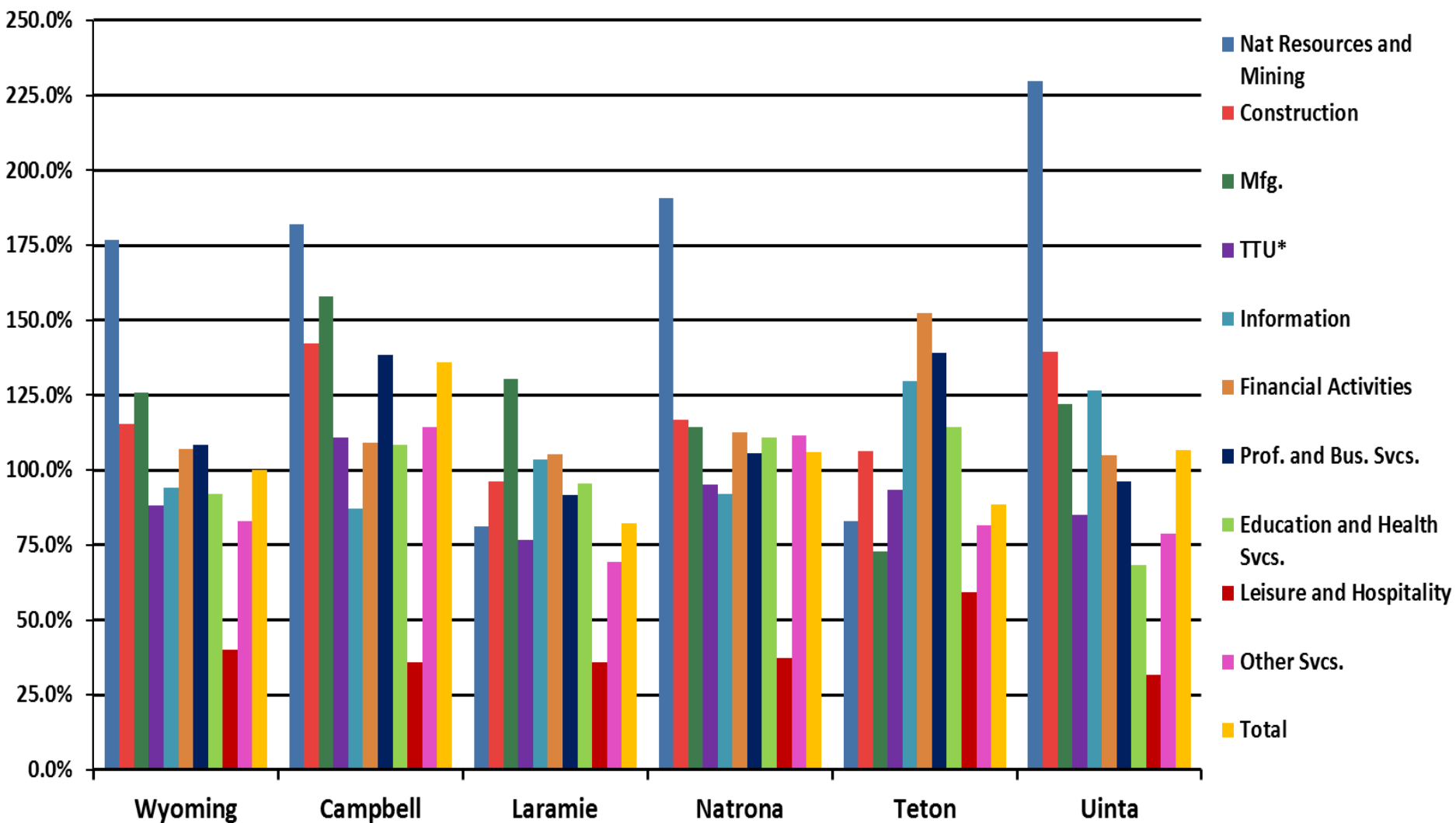


Table: Average Weekly Wage by Private Industry for Wyoming and Select Counties, 2010

	Wyoming	Campbell	Laramie	Natrona	Teton	Uinta
Natural Resources & Mining	\$1,402	\$1,442	\$644	\$1,513	\$657	\$1,821
Construction	\$916	\$1,129	\$762	\$927	\$842	\$1,107
Manufacturing	\$997	\$1,253	\$1,035	\$906	\$577	\$969
Trade, Transport., & Utilities	\$700	\$880	\$607	\$754	\$740	\$674
Information	\$746	\$691	\$822	\$729	\$1,029	\$1,003
Financial Activities	\$848	\$865	\$834	\$892	\$1,209	\$832
Prof. & Bus. Services	\$860	\$1,099	\$726	\$837	\$1,102	\$762
Education & Health Svcs.	\$729	\$860	\$757	\$878	\$906	\$543
Leisure & Hospitality	\$318	\$285	\$284	\$297	\$469	\$251
Other Svcs.	\$658	\$906	\$551	\$886	\$647	\$625
Total	\$793	\$1,078	\$652	\$841	\$702	\$846

Source: U.S. Department of Labor, Bureau of Labor Statistics. (n.d.). Quarterly Census of Employment & Wages. Accessed May 30, 2012, from <http://www.bls.gov/cew/>.

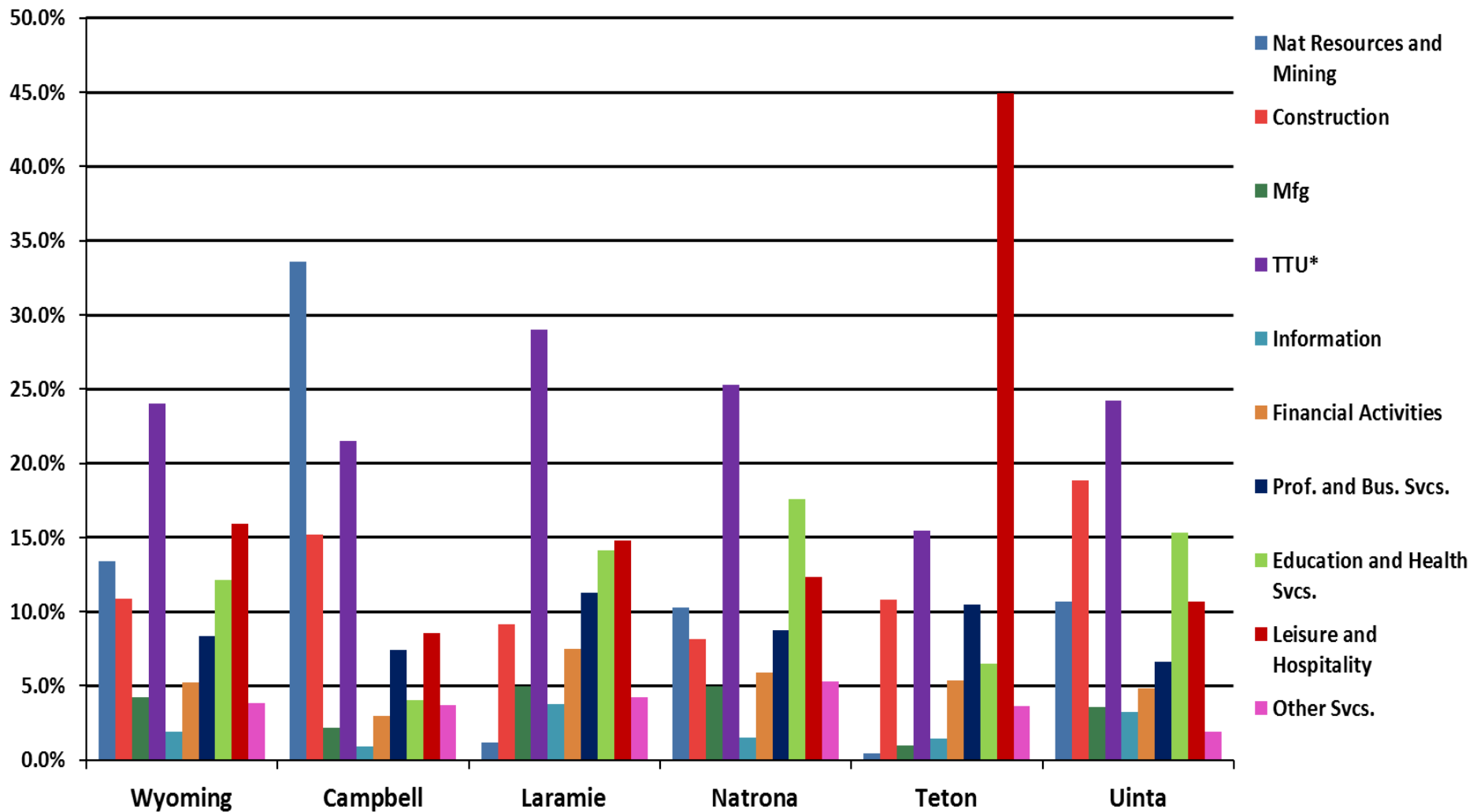
Figure: Percent of Wyoming Average Weekly Wage by Private Industry for Wyoming and Selected Counties, 2010



*Trade, Transportation, & Utilities

Source: U.S. Department of Labor, Bureau of Labor Statistics. (n.d.). Quarterly Census of Employment & Wages. Accessed May 30, 2012, from <http://www.bls.gov/cew/>.

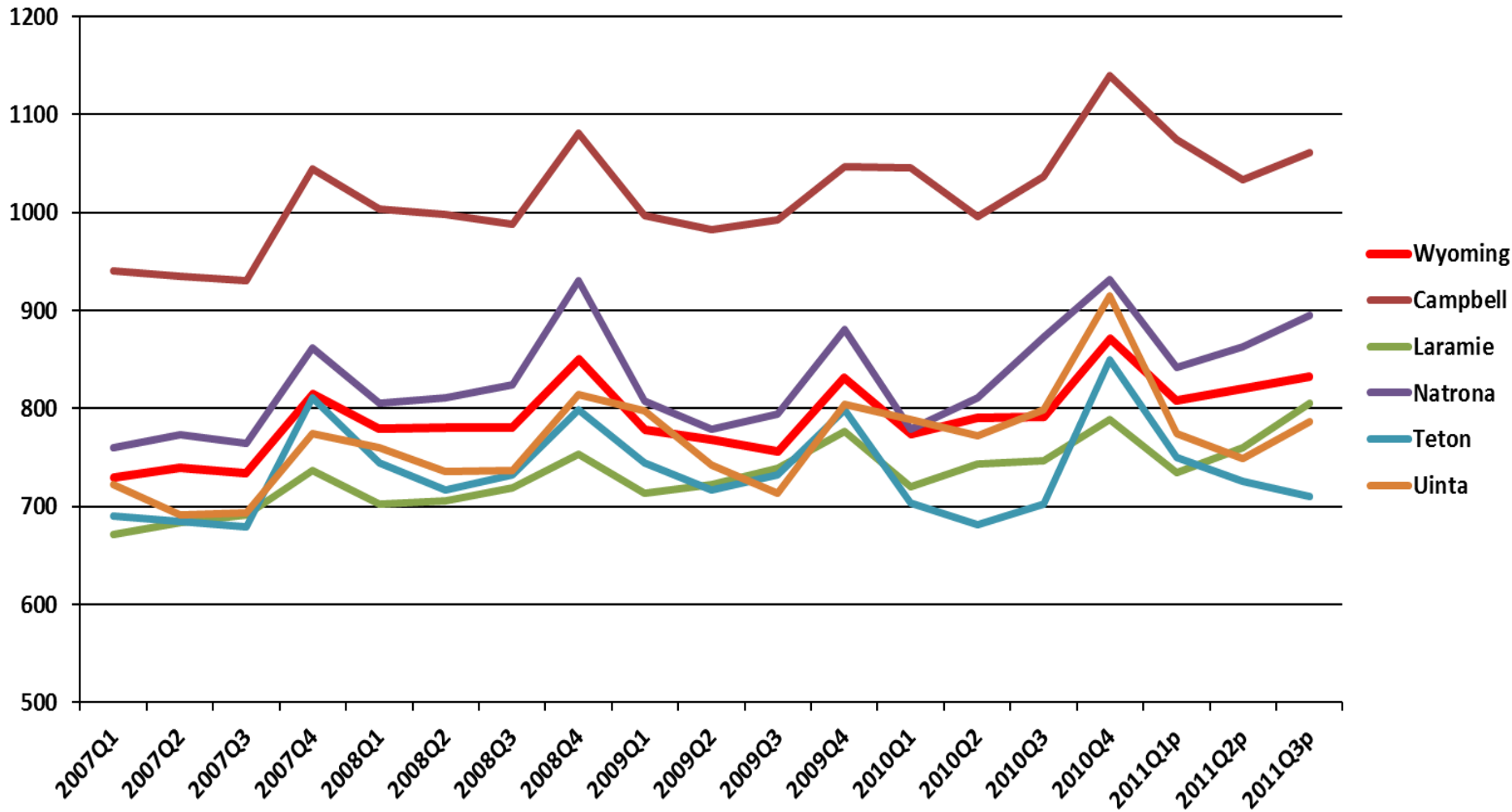
Figure: Distribution of Employment by Private Industry for Wyoming and Selected Counties, 2010



*Trade, Transportation, & Utilities

Source: U.S. Department of Labor, Bureau of Labor Statistics. (n.d.). Quarterly Census of Employment & Wages. Accessed May 30, 2012, from <http://www.bls.gov/cew/>.

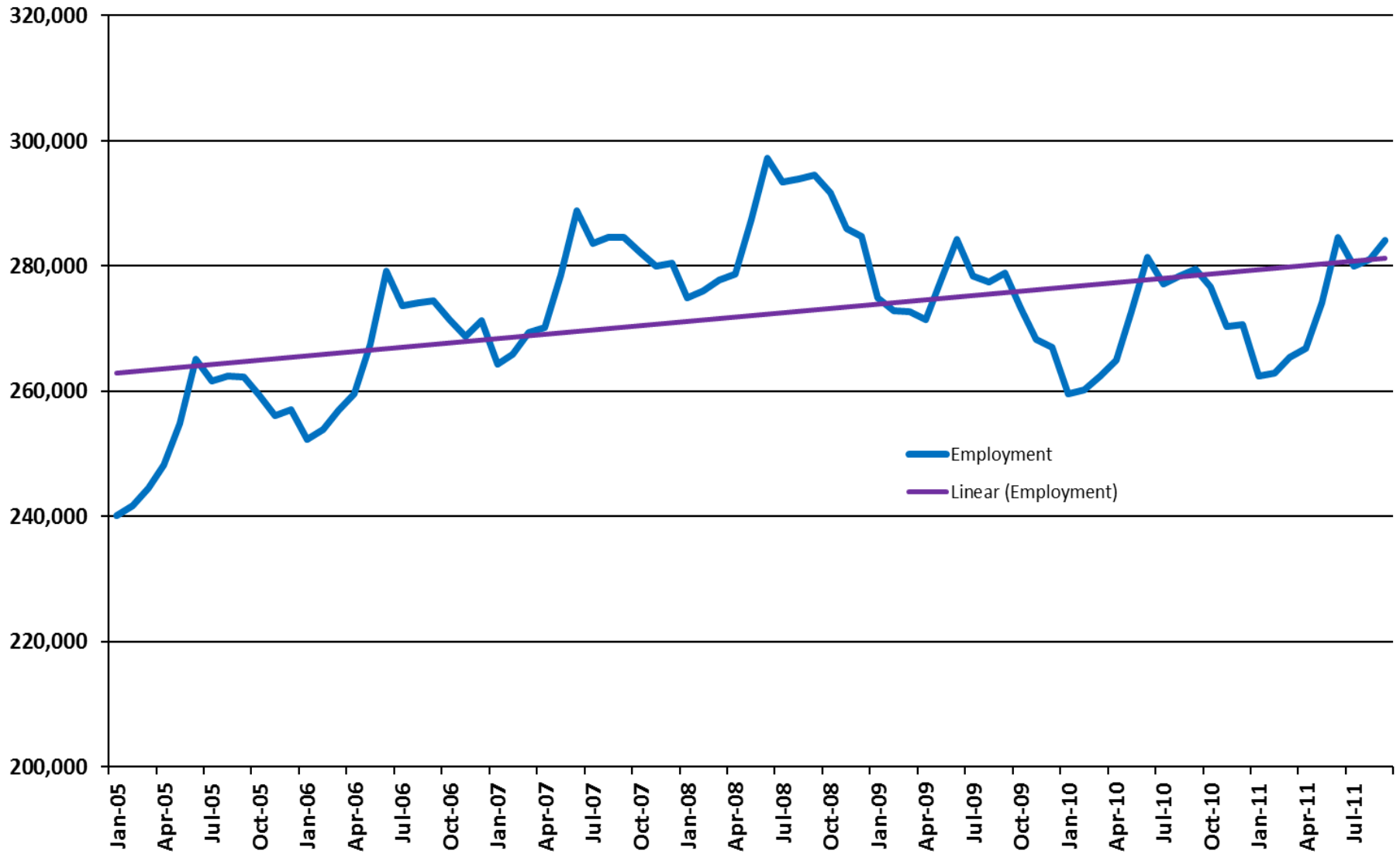
Figure: Average Weekly Wage for Wyoming and Selected Counties, First Quarter 2007 (2007Q1) to Third Quarter 2011 (2011Q3)



p - Data are preliminary.

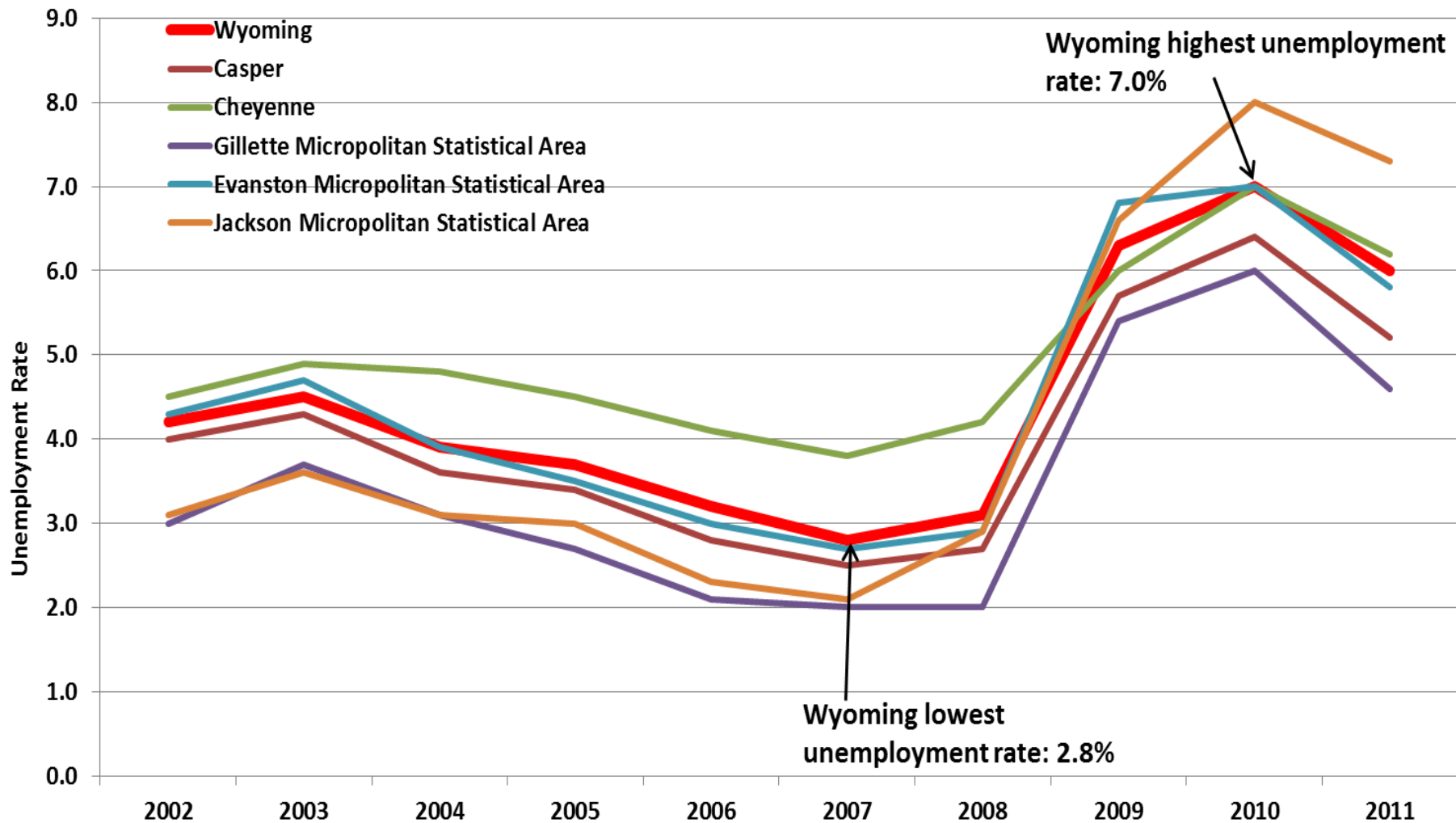
Source: U.S. Dept. of Labor, Bureau of Labor Statistics. (n.d.). *Quarterly Census of Employment and Wages*. Accessed May 30, 2012, from <http://www.stats.bls.gov/cew/>.

Figure: Wyoming Employment by Month, 2005-2011



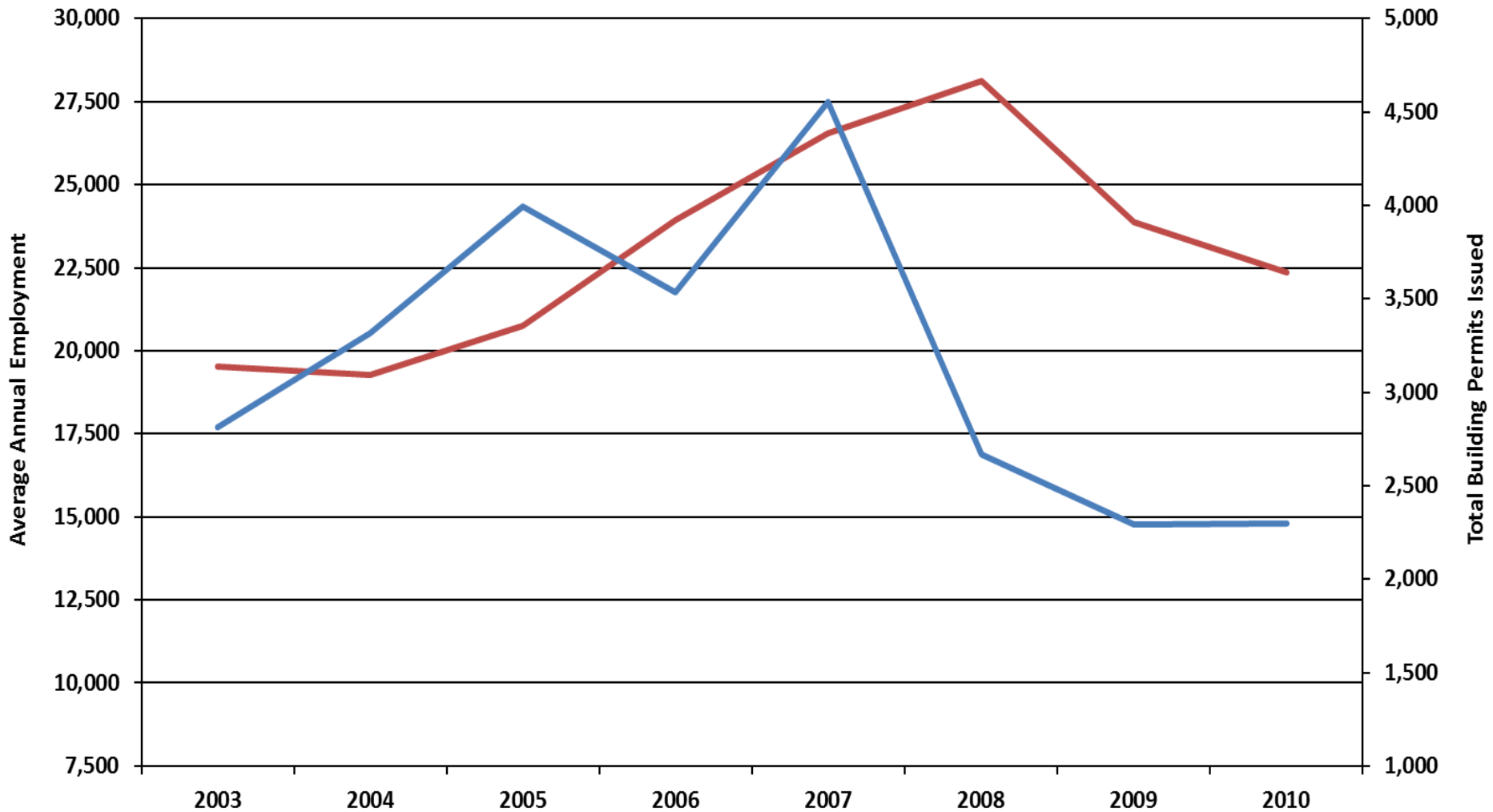
Source: U.S. Dept. of Labor, Bureau of Labor Statistics. (n.d.). *Quarterly Census of Employment and Wages*. Accessed June 14, 2012, from <http://www.stats.bls.gov/cew/>.

Figure: Annual Average Unemployment Rates for Wyoming, Casper, Cheyenne, Gillette, Evanston, and Jackson, 2002-2011



Source: U.S. Department of Labor, Bureau of Labor Statistics. (n.d.). *Local Area Unemployment Statistics*. Accessed May 29, 2012, from <http://www.stats.bls.gov/lau/>.

Figure: Wyoming Construction Industry Average Annual Employment and Total Number of Building Permits Issued, 2003-2011



Sources: U.S. Census Bureau; and U.S. Department of Labor, Bureau of Labor Statistics. (n.d.). Quarterly Census of Employment & Wages. Accessed June 14, 2012, from <http://www.bls.gov/cew/>.

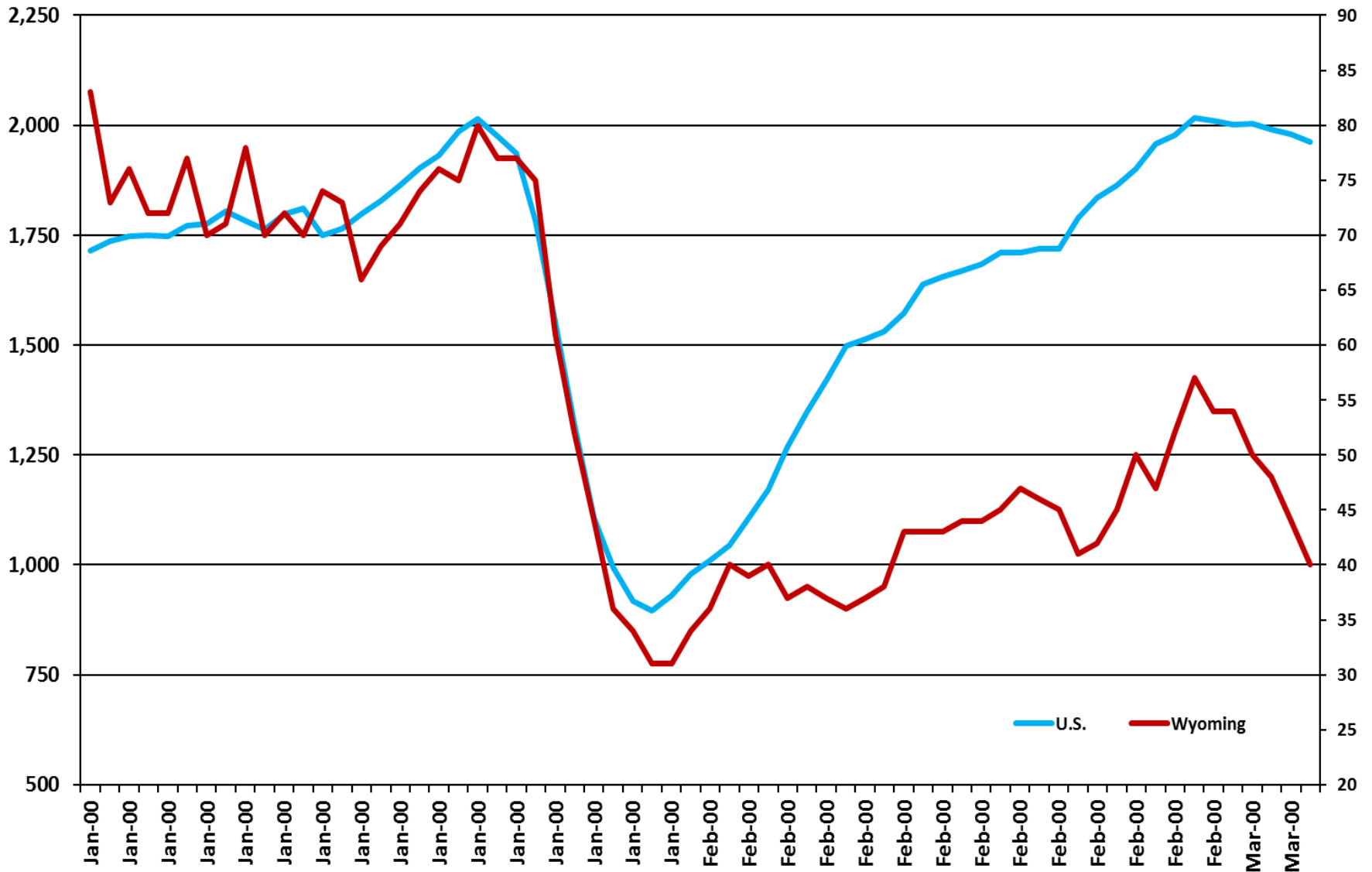
— Average Annual Employment
 — Total Building Permits Issued

Figure: U.S. Natural Gas Wellhead Price (Dollars Per Thousand Cubic Feet), January 2007-February 2012



Source: U.S. Energy Information Administration. (2012, April 30). *U.S. Natural Gas Wellhead Price (Dollars Per Thousand Cubic Feet)*. Accessed May 31, 2012, from <http://www.eia.gov/dnav/ng/hist/n9190us3M.htm>

Figure: Wyoming Monthly Average Rotary Rig Counts, 2007-2011



Source: Baker Hughes. (2012). *Rotary Rig Count*. Accessed May 31, 2012, from http://investor.shareholder.com/bhi/rig_counts/rc_index.cfm?showpage=na

Research & Planning Resources: Beyond General Economic Conditions



Research & Planning's Website

<http://doe.state.wy.us/lmi/>

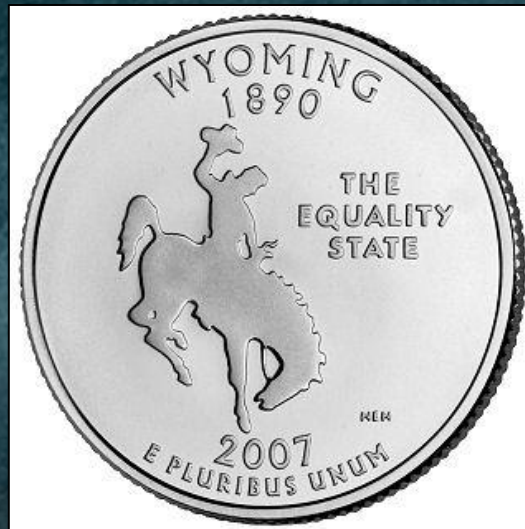
- The place for information about Wyoming's labor market
- Vast amounts of data and research are produced by R&P
- Data ranges from routinely-produced statistics and research to occasional reports

Employment Statistics

- Local Area Unemployment Statistics
 - Employment and unemployment data for Wyoming and its counties
 - Includes the unemployment rate
 - Produced monthly
 - <http://doe.state.wy.us/lmi/laus.htm>

Employment Statistics

- Quarterly Census of Employment & Wages
 - A near-census of employment and wages by quarter for the state, industries, and counties
 - Produced quarterly
 - http://doe.state.wy.us/lmi/toc_202.htm



Occupations

- Occupational Employment Statistics
 - Estimates of employment and wages earned by occupation
 - Selected occupational data are available by
 - Region
 - Industry
 - <http://doe.state.wy.us/lmi/oes.htm>

Table: Wyoming Occupational Employment and Wages for Selected Health Care Practitioners and Technical Occupations in the Northeast Region, September 2011

Occupation	Occ. code	Est. empl.	Mean wage	10th pct	25th pct	Median wage	75th pct	90th pct
HEALTHCARE PRACTITIONERS AND TECHNICAL OCCUPATIONS	29-0000	2,050	73,932	33,329	45,048	59,285	77,437	132,222
			35.55	16.02	21.66	28.50	37.23	63.57
Dentists, General	29-1021	30						
Dietitians and Nutritionists	29-1031	10	58,189	42,286	50,442	58,631	66,421	74,051
			27.97	20.33	24.25	28.19	31.93	35.6
Pharmacists	29-1051	60	105,906	75,929	85,912	111,885	123,964	134,077
			50.92	36.51	41.31	53.79	59.60	64.46
Family and General Practitioners	29-1062		183,294	132,725	148,972			
			88.12	63.81	71.62			
Surgeons	29-1067	10	250,922					
			120.63					
Physicians and Surgeons, All Other	29-1069	50	208,702	131,724				
			100.33	63.32				
Physician Assistants	29-1071	20	92,247	73,612	81,063	92,327	101,386	116,874
			44.35	35.39	38.97	44.39	48.74	56.19
Registered Nurses	29-1111	780	62,115	44,445	51,802	60,393	71,735	85,229
			29.86	21.36	24.91	29.03	34.49	40.97
Occupational Therapists	29-1122	30	69,890	55,205	62,086	69,596	76,349	88,721
			33.6	26.54	29.85	33.45	36.7	42.66

Projections

- For occupations, industries, and occupations within industries
- Short-term projections cover a 2-year period
- Long-term projections cover a 10-year period



Projections

- The following are available with the most recent long-term projections
 - Industries
 - Occupations
 - Occupations within industries
 - Occupations within sub-state areas
- <http://doe.state.wy.us/lmi/projections.htm>

Occupations with the Highest Number of Average Annual Openings in Wyoming, 2011 to 2021

Occupation	Annual Openings			Typical Education	Average Annual Wage
	Growth	Replacement Need	Total		
Truck Drivers, Heavy & Tractor-Trailer	114	706	820	High School or Less	\$43,266
Secretaries, Except Legal, Medical, & Executive	89	585	674	Some College or Certificate	\$30,456
Registered Nurses	133	522	654	Associate's Degree	\$60,929
General & Operations Managers	69	555	625	Bachelor's Degree	\$87,270
Operating Engineers & Other Construction Equipment Operators	151	447	598	High School or Less	\$47,929
Bookkeeping, Accounting, & Auditing Clerks	61	509	571	High School or Less	\$34,920
Office Clerks, General	61	463	524	High School or Less	\$29,683
Teacher Assistants	109	333	441	Some College or Certificate	\$25,469
Service Unit Operators, Oil, Gas, & Mining	99	334	433	High School or Less	\$46,984
Nursing Aides, Orderlies, & Attendants	81	342	423	High School or Less	\$27,566

Source: Wyoming's Short-Term (2011-2013) and Long-Term (2011-2021) Industry and Occupational Projections; Statewide/All Industries by Occupation, Major Industries by Occupation, and Sub-state Regions by Occupation (<http://doe.state.wy.us/lmi/projections.htm>)

Workforce Demographics

- Available by county and industry
- Updated annually
- Includes counts and earnings by age, gender, and industry
- http://doe.state.wy.us/mi/earnings_tables/2011/index.htm

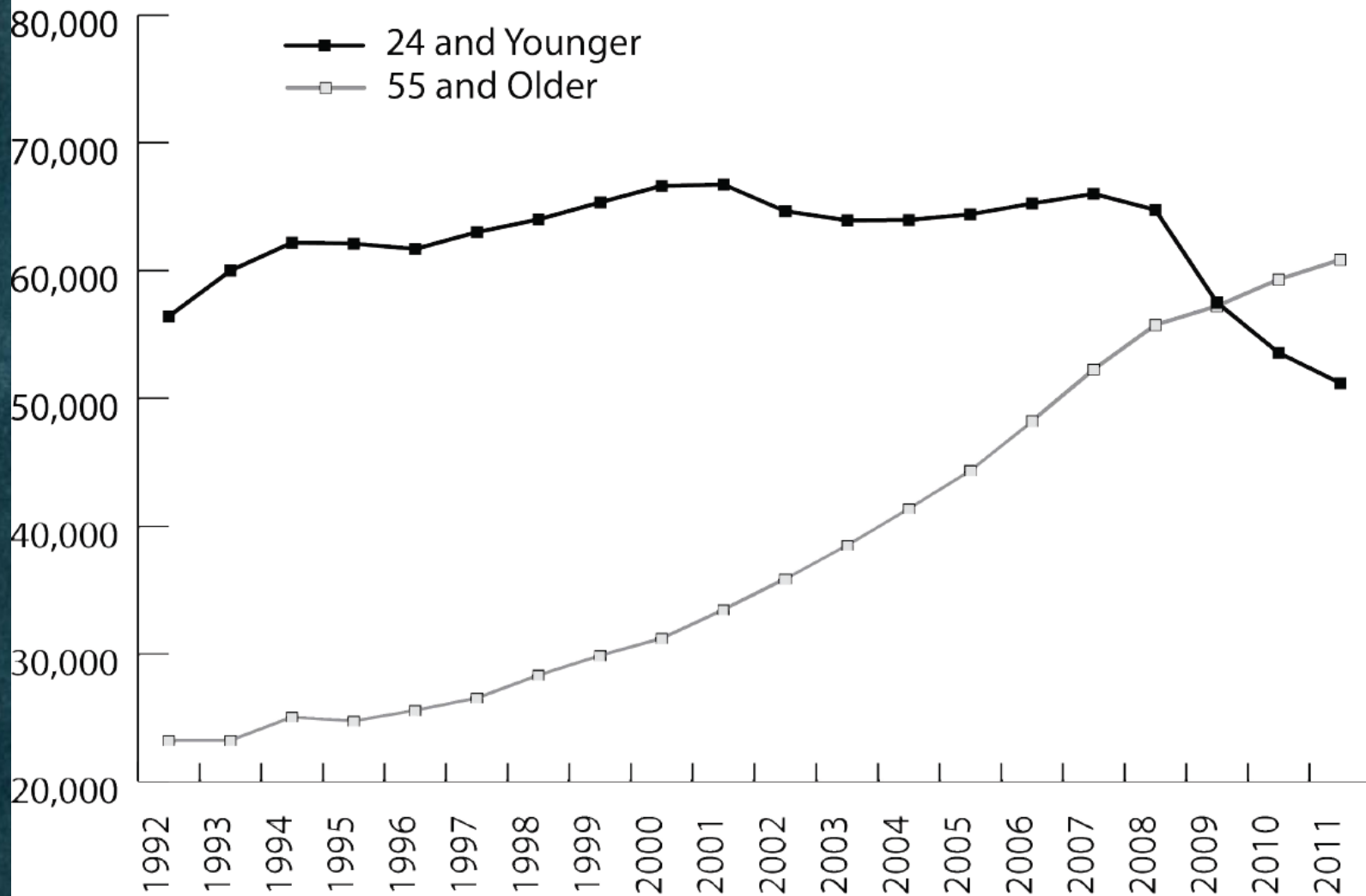


Table 7-1: Total Employment in Wyoming by Gender and Age Group, 2010 to 2011

Gender	2010	2011	Change	
			N	%
Female	136,406	134,133	-2,273	-1.7%
Male	160,679	157,511	-3,168	-2.0%
Unknown	53,836	62,783	8,947	16.6%
Total	350,921	354,427	3,506	1.0%

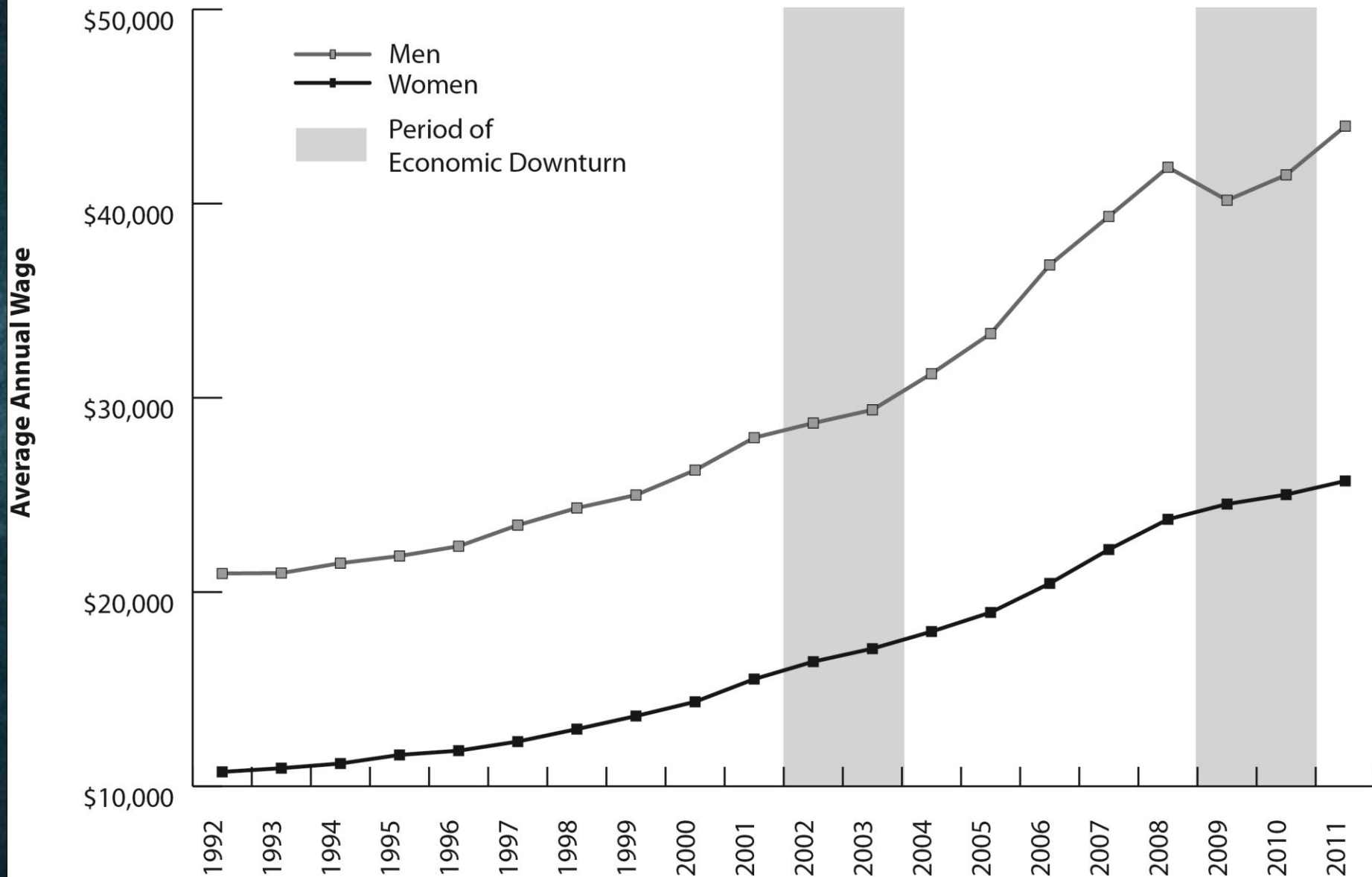
Age	2010	2011	Change	
			N	%
19 and Under	20,277	19,274	-1,003	-4.9%
20-24	33,282	31,912	-1,370	-4.1%
25-34	67,561	66,417	-1,144	-1.7%
35-44	55,465	54,917	-548	-1.0%
45-54	63,353	60,418	-2,935	-4.6%
55-64	46,430	47,495	1,065	2.3%
65 and Older	12,875	13,349	474	3.7%
Unknown	51,678	60,645	8,967	17.4%
	350,921	354,427	3,506	1.0%

Number of Workers Ages 24 & Younger and 55 & Older Working in Wyoming, 1992 to 2011

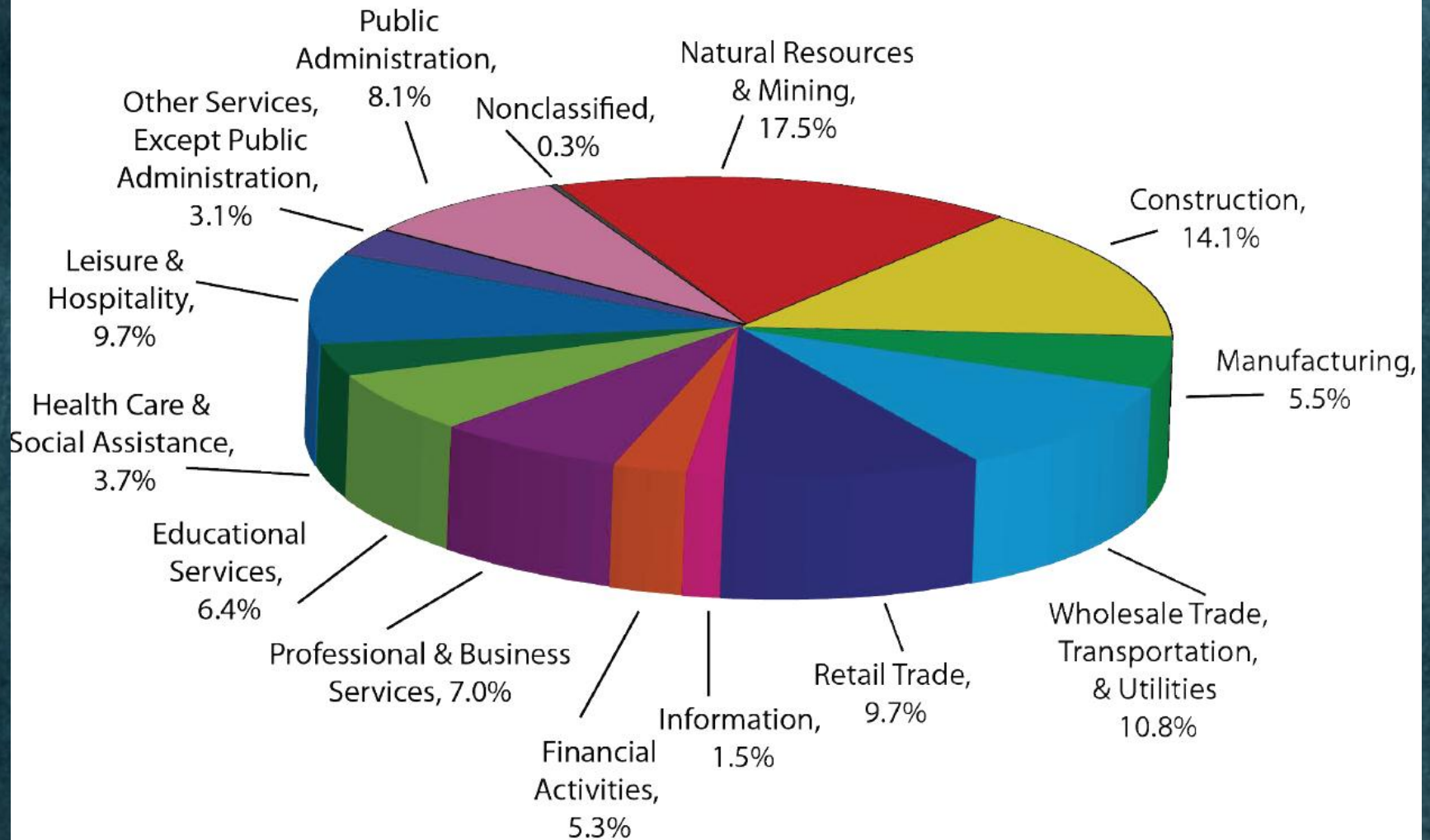


Source: Wyoming Wages by County, Industry, Age, & Gender, 1992-2011
(http://doe.state.wy.us/lmi/earnings_tables/2012/index.htm; pending publication)

Figure 7-3: Average Annual Wages for Men and Women Working in Wyoming, 1992 to 2011

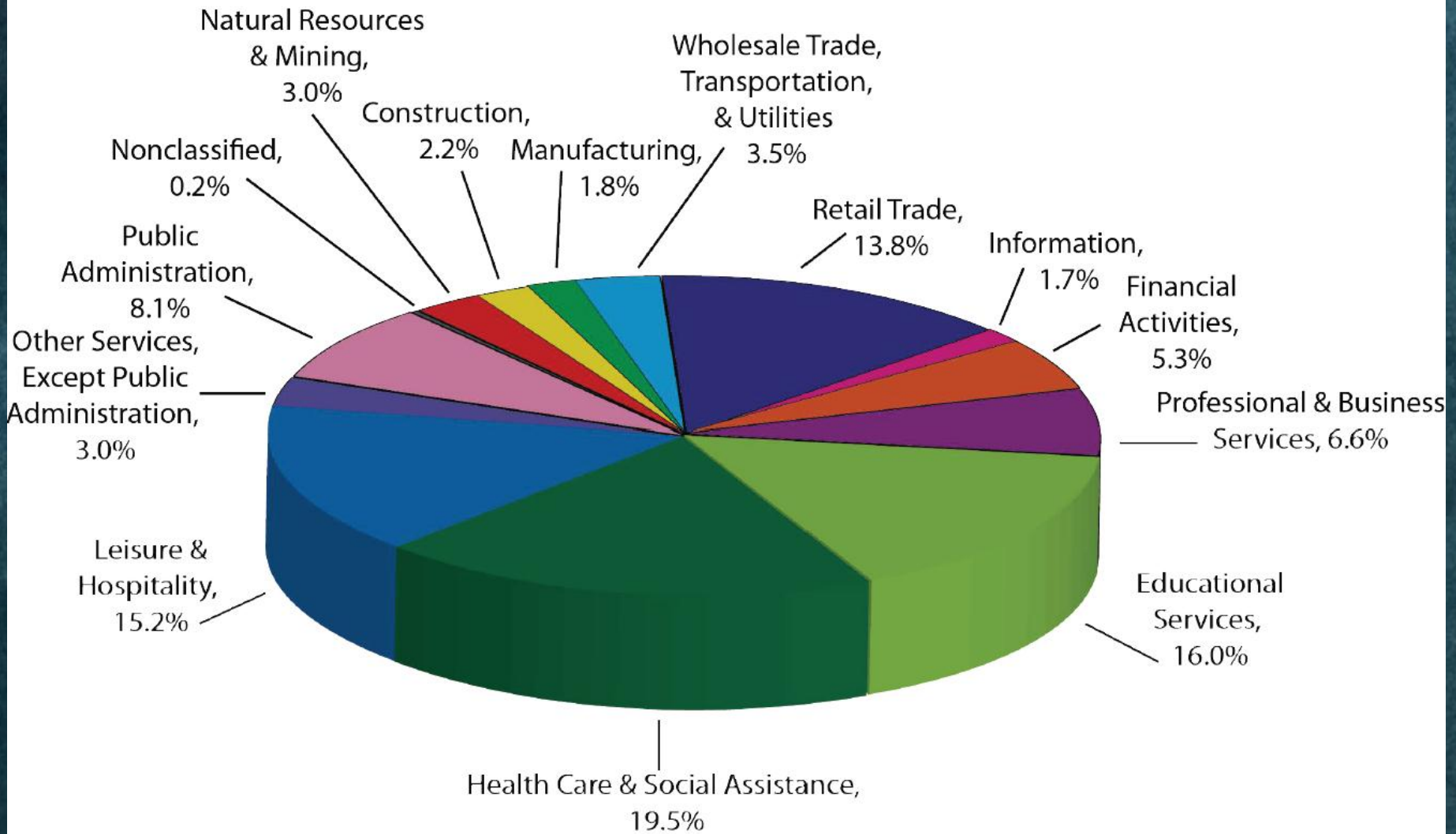


Males Working in Wyoming by Industry, 2011



Source: Wyoming Wages by County, Industry, Age, & Gender, 1992-2012
(http://doe.state.wy.us/lmi/earnings_tables/2012/index.htm; pending publication)

Females Working in Wyoming by Industry, 2011



Source: Wyoming Wages by County, Industry, Age, & Gender, 1992-2012
 (http://doe.state.wy.us/lmi/earnings_tables/2012/index.htm; pending publication)

Newly-Hired Workers

- By occupation and industry
- Includes
 - Counts by age, gender, industry
 - Average wages
 - Employment after one quarter (turnover)
- <http://doe.state.wy.us/lmi/newhires.htm>

Employer-Provided Benefits

Table 4: Percentage of Employers Offering Selected Benefits to Their Full- and Part-Time Employees in Wyoming, 2010

Benefit Type	Full-Time	Part-Time
Child Care	2.5%	1.4%
Dental Plan	29.2%	3.4%
Dependent Health Ins.	35.5%	3.9%
Educational/Tuition Assist.	22.2%	8.7%
Flexible Spending Account	12.2%	2.4%
Health Insurance	44.6%	6.0%
Hiring Bonus	4.9%	0.6%
Life Insurance	27.5%	3.5%
Long-Term Disability	12.7%	1.8%
Paid Holidays	56.0%	17.7%
Paid Personal Leave	25.3%	6.2%
Paid Sick Leave	27.8%	5.1%
Paid Vacation	52.7%	11.3%
Retirement Plan	32.3%	6.2%
Operate in Shifts	32.3%	6.0%
Shift Differentials	30.7%	26.0%
Short-Term Disability	12.3%	2.1%
Vision Plan	17.8%	3.5%

- A publication is produced annually
- Results released by industry, firm size, and full- and part-time status
- <http://doe.state.wy.us/lmi/benefits.htm>

Commuting Patterns

- Within and between county commuting
- Flow of workers from out of state
- <http://doe.state.wy.us/lmi/commute.htm>



Specialized Research & Information from R&P

- Licensed Occupations Directory:
<http://doe.state.wy.us/lmi/oes.htm>
- Health Care: <http://doe.state.wy.us/lmi/health.htm>
- Nursing: <http://doe.state.wy.us/lmi/nursing.htm>
- Program Outcomes Research:
<http://doe.state.wy.us/lmi/outcomes.htm>
- Occasional Papers:
<http://doe.state.wy.us/lmi/occasional.htm>

Other Data & Information Resources



Other Data & Information Resources

- U.S. Dept. of Labor, Bureau of Labor Statistics - <http://bls.gov/>
 - Labor market data for the U.S., states, and selected territories
 - Inflation and prices
 - Labor productivity
 - Selected international labor and price data

Other Data & Information Resources

- U.S. Census Bureau - <http://www.census.gov/>
 - Population characteristics such as
 - Individuals and households in poverty
 - Population projections
 - Educational attainment
 - Migration



Other Data & Information Resources

- U.S. Energy Information Administration - <http://www.eia.gov/>
 - U.S. and selected state data for information such as
 - Energy prices
 - Reserves
 - Production
 - Consumption
 - Electricity
 - Renewable and alternative fuels



Other Data & Information Resources

- Wyoming Dept. of Administration & Information, Economic Analysis Division - <http://eadiv.state.wy.us/index.asp>
 - Wyoming population characteristics
 - Revenue estimates and projections
 - Cost of living data
 - Gross state product
 - Wyoming export data

Other Data & Information Resources

- Wyoming Oil & Gas Conservation Commission - <http://wogcc.state.wy.us/>
- Has information such as
 - Statistics
 - Permits to drill
 - County statistics
 - Production data
 - Geologic data and reports



Other Data & Information Resources

- Wyoming Mining Association
<http://www.wma-minelife.com/>
 - Covers all types of mineral mining
 - Trona
 - Uranium
 - Gold
 - Coal
 - Bentonite
 - Rare earth minerals
 - Production and related data are available for selected minerals



What to Do If You Can't Find the Information You're Looking For



- Give R&P a call or send us an e-mail
- We can help you locate information on our website or assist you with finding what you're looking for on other websites
- On occasion data or information are not available or are not sufficiently current

Contact Us

Research & Planning

P.O. Box 2760

Casper, WY 82602

Phone: 307-473-3807



DWS-RESEARCHPLANNING@wyo.gov

<http://doe.state.wy.us/lmi>