



The Current Labor Market Profile

Presented by Tom Gallagher
Research & Planning
Wyoming Department of
Employment
November 30, 2010



2/4/2011

1



Who is Research & Planning

OUR ORGANIZATION:

R&P is a separate, exclusively statistical entity.

WHAT WE DO:

R&P collects, analyzes, and publishes timely and accurate labor market information (LMI) meeting established statistical standards.

OUR CUSTOMERS:

LMI makes the labor market more efficient by providing the public and the public's representatives with the basis for informed decision making.





What Happened?

- Wyoming lost 20,600 jobs from December 2008 to December 2009 (-9.4%)
- Unemployment Insurance benefit payments reached a record high in 2009
- The average annual wage for men decreased in 2009
- Many of those who lost jobs in 2009 remained unemployed during first or second quarter 2010

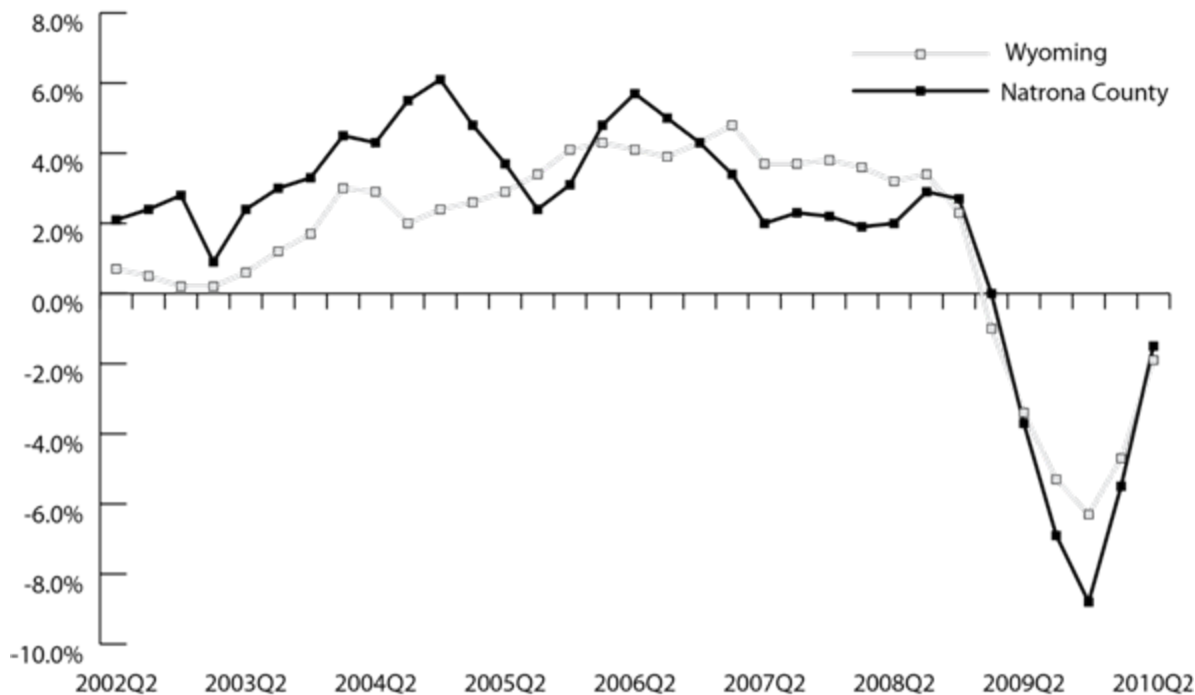




Then & Now: Average Monthly Employment (Place of Work)



Average Monthly Employment: 2010Q2
 Wyoming: 272,688
 Natrona County: 38,072

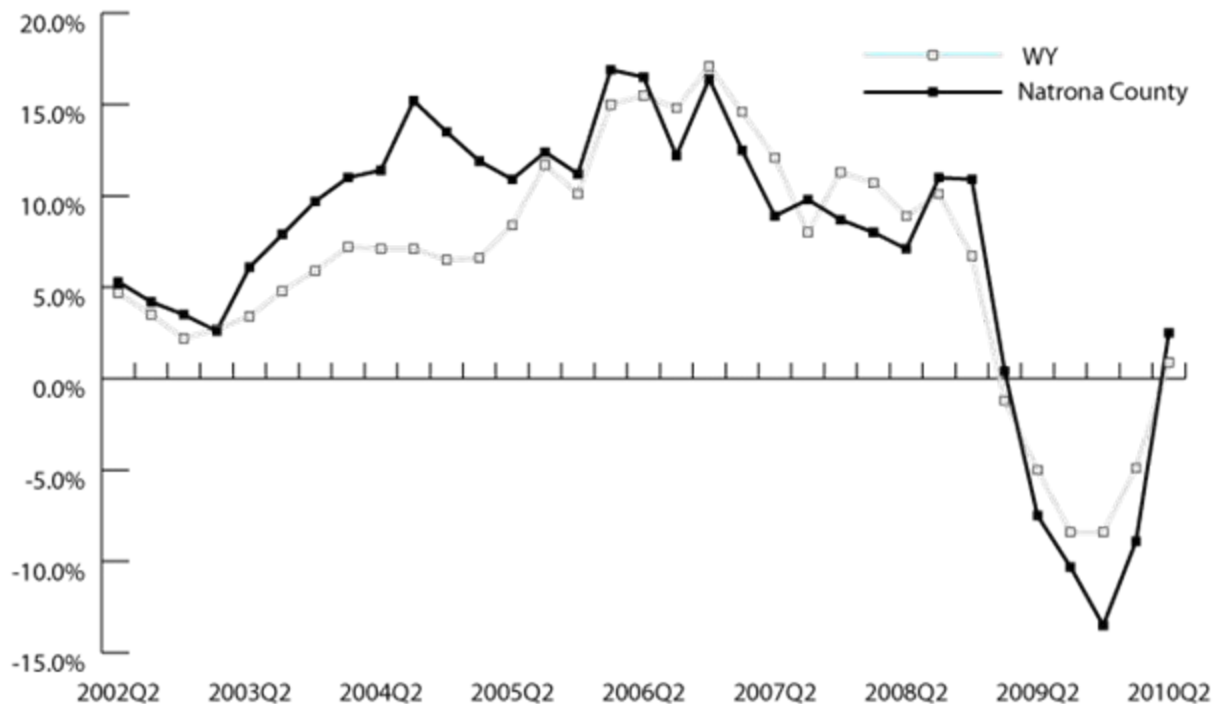




Then & Now: Total Payroll (Place of Work)



Total Payroll: 2010Q2
 Wyoming: \$2,798,474,944
 Natrona County: \$401,467,726





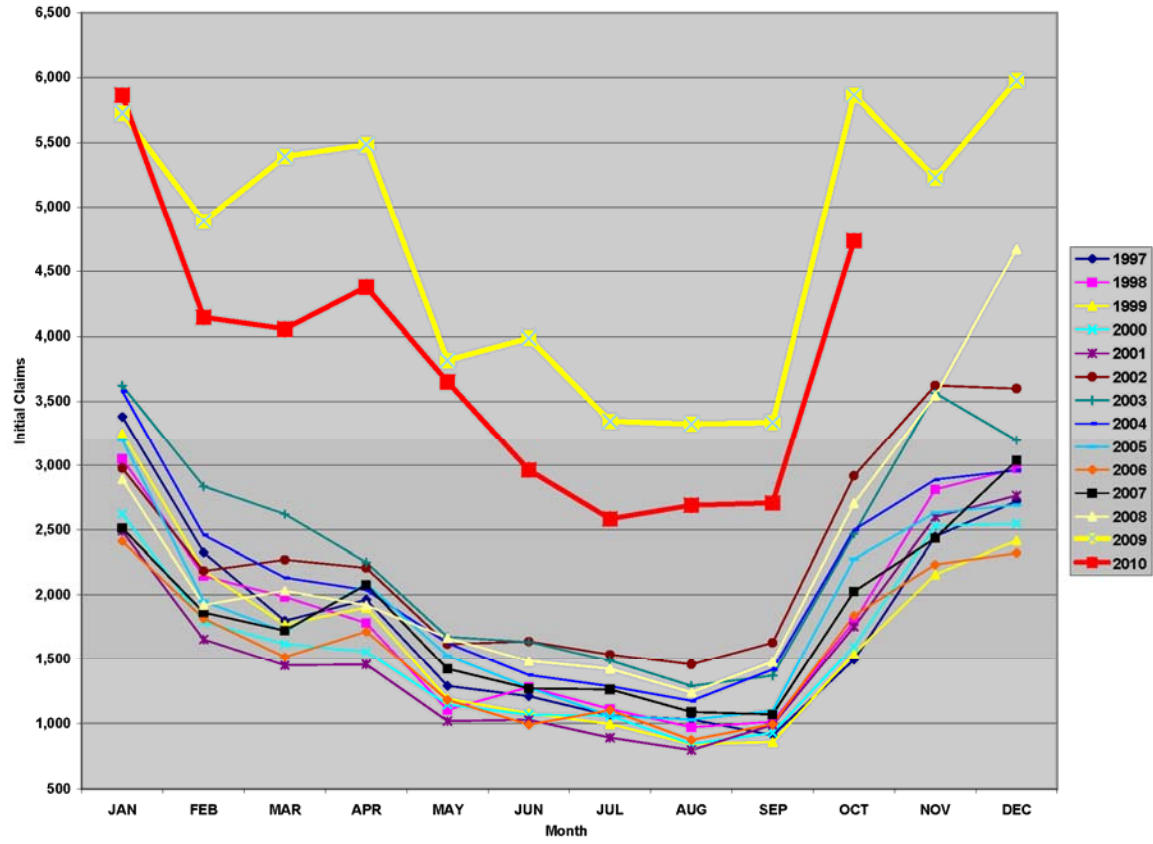
Job Losses, 2008-2009

- Resident Male Workers: -9,514 (-5.7%)
 - 2009 Average Wage: \$40,840 (-3.4%)
- Resident Female Workers: -5,528 (-3.9%)
 - 2009 Average Wage: \$25,016 (3.8%)
- Nonresident Workers: -11,845 (-16.3%)
 - 2009 Average Wage: \$14,329 (6.3%)
- Gender/Wage Gap Declines from 57.0% in 2008 to 61.3% in 2009





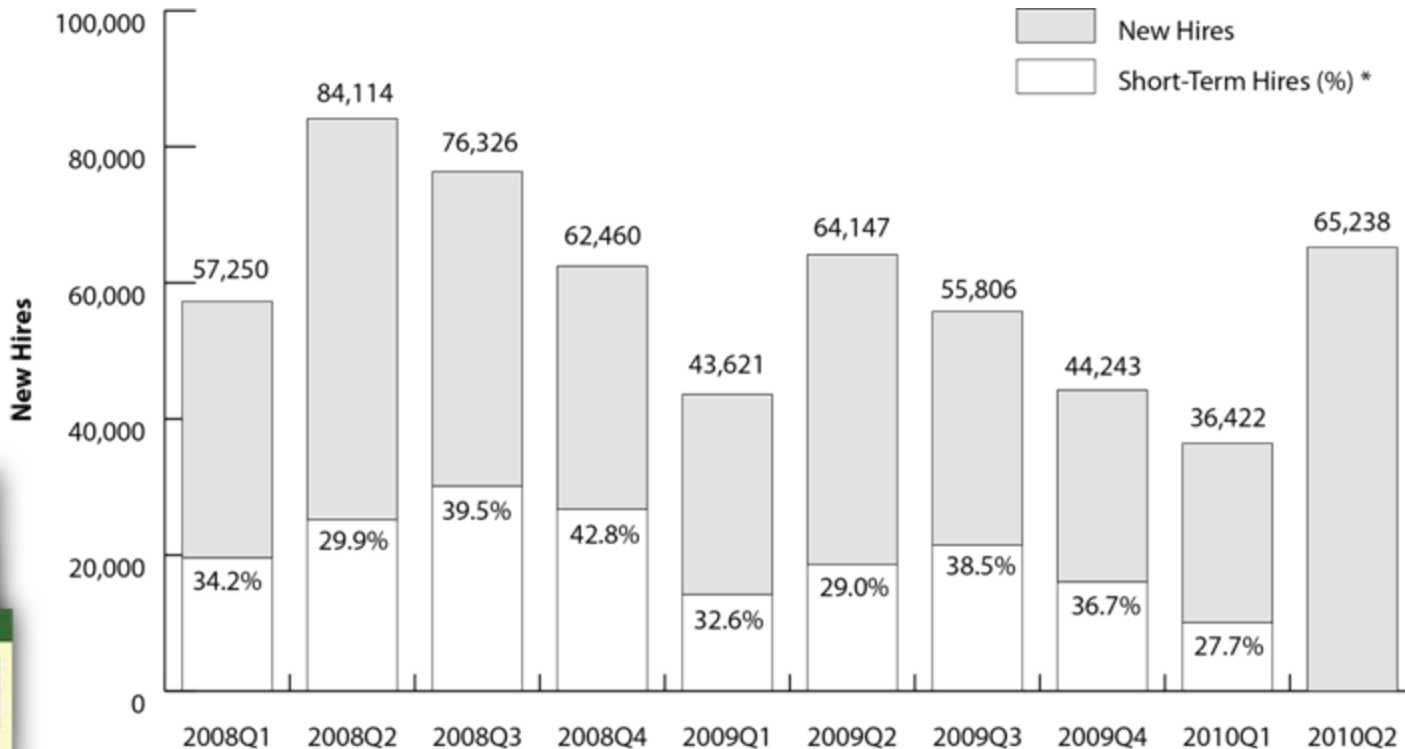
Initial Unemployment Claims: 1997-2010



D. Leonard, WYDOE, R&P, 11/3/2010



Hires in Wyoming



* Short-term hires data for 2010Q2 is not yet available.



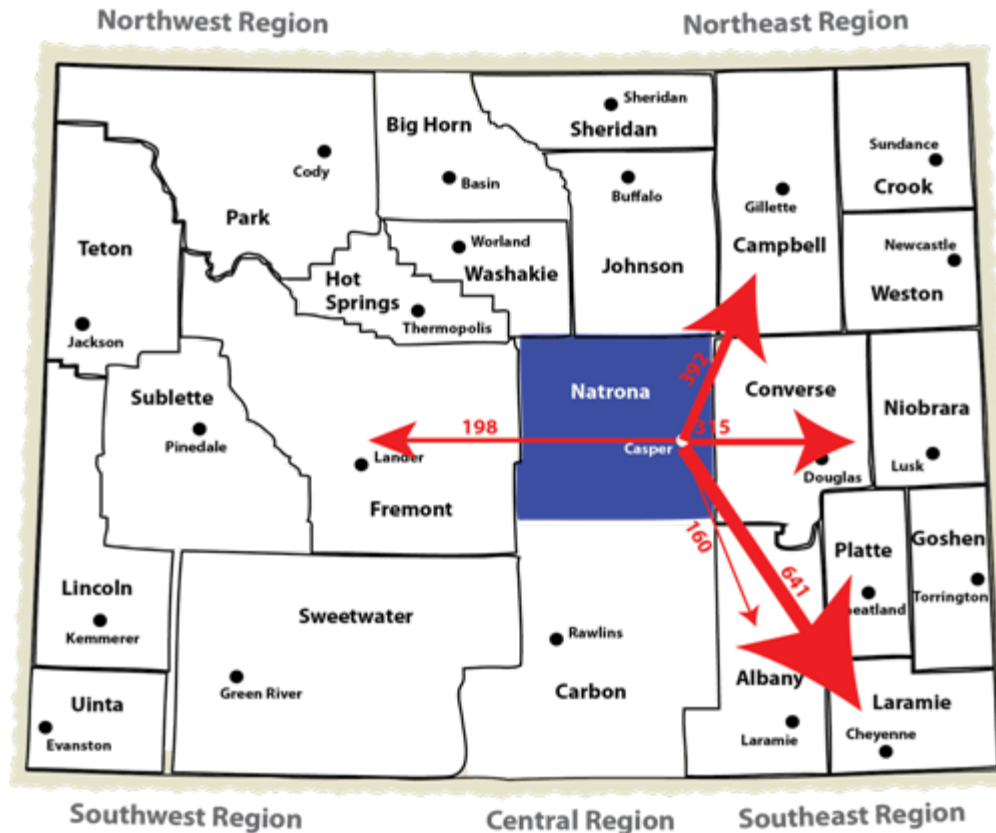
Then & Now: Employment

	2009	2010*	Change (n)	Change (%)
Labor Force	293,927	291,987	-1,490	-0.7%
Employment	275,217	271,673	-3,541	-1.3%
Unemployment	18,710	20,314	1,604	7.9%
Unemployment Rate	6.4%	7.0%	--	0.6%



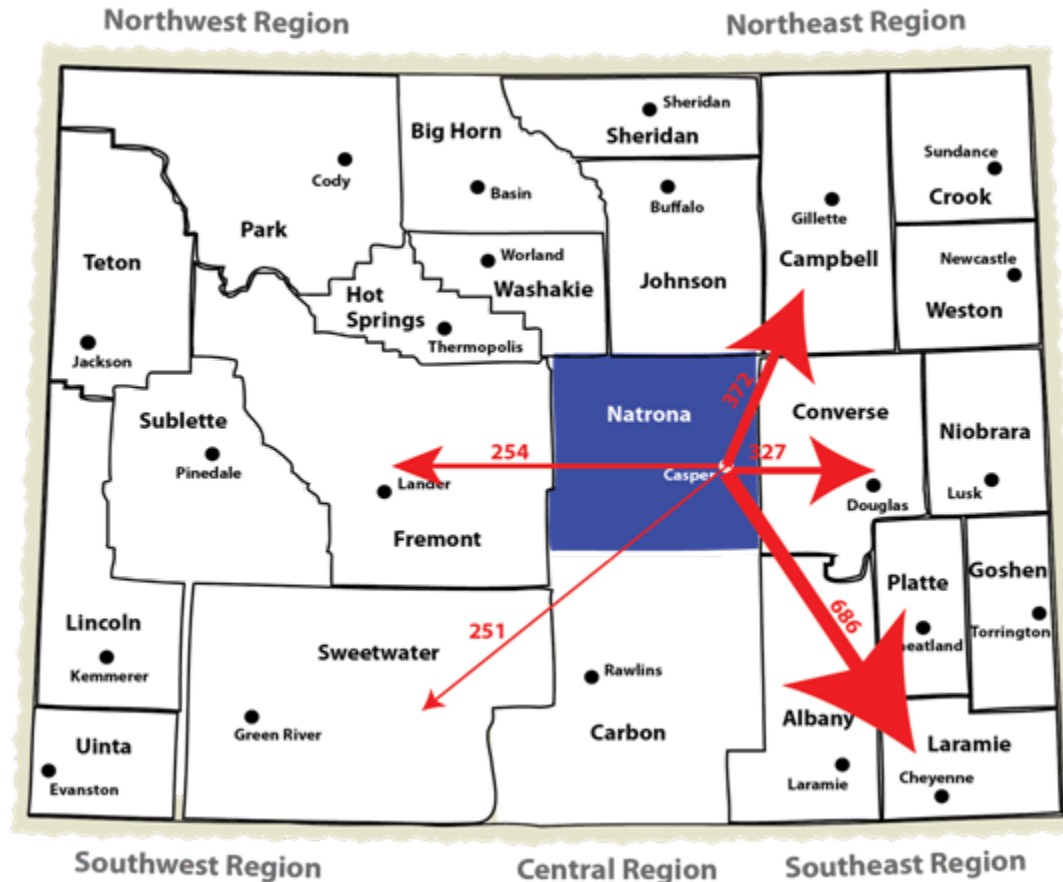


Major Worker Commuting Destinations for Natrona County Residents, 2009Q4





Major Worker Commuting Destinations for Natrona County Residents and Within-County Non-Resident Commuters, 2007Q4*



*1,296 non-resident workers commuted to an unknown county.



2/4/2011

11



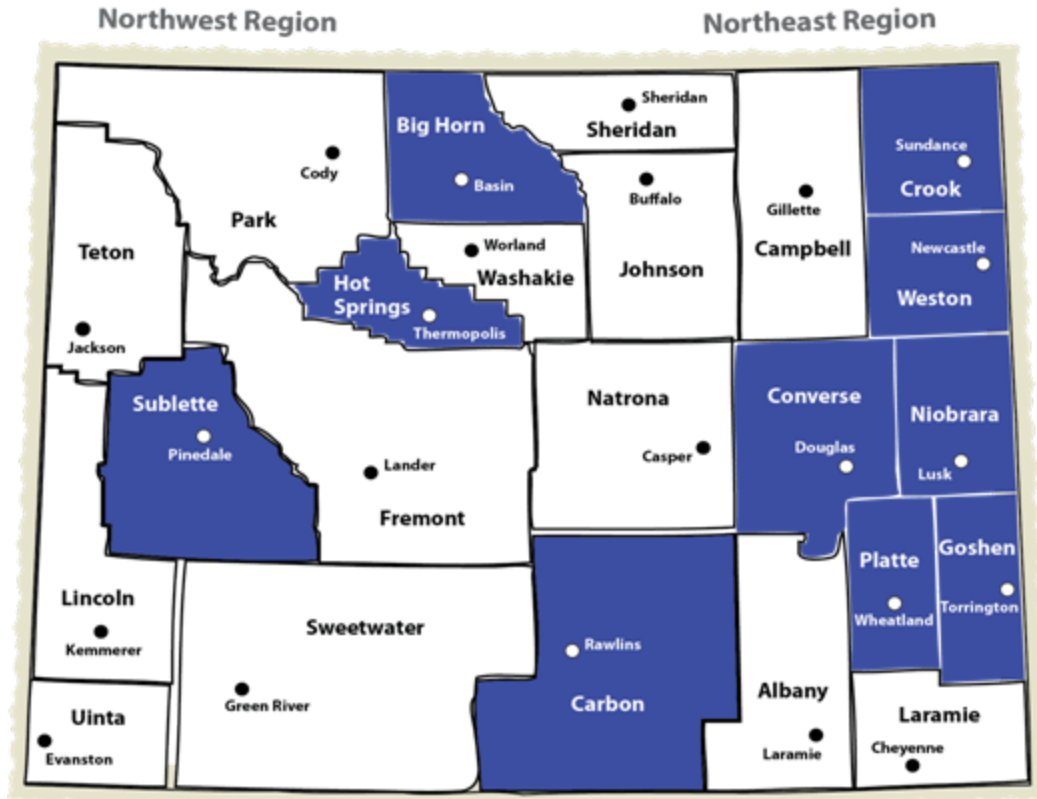
Top 5 Major Commuting Destinations for Natrona County Residents and Within-County Non-Resident Commuters, 2007Q4*

- Laramie: 686 (16.4%)
- Campbell: 372 (8.9%)
- Converse: 327 (7.8%)
- Fremont: 254 (6.1%)
- Sweetwater: 251 (6.0%)
- Non-resident commuters: 1,296 (30.9%)
- **Total All Counties: 4,194 (100%)**





Over-the-Year Change in Monthly Employment, Second Quarter 2009 and 2010



□ Negative Change

■ Positive Change



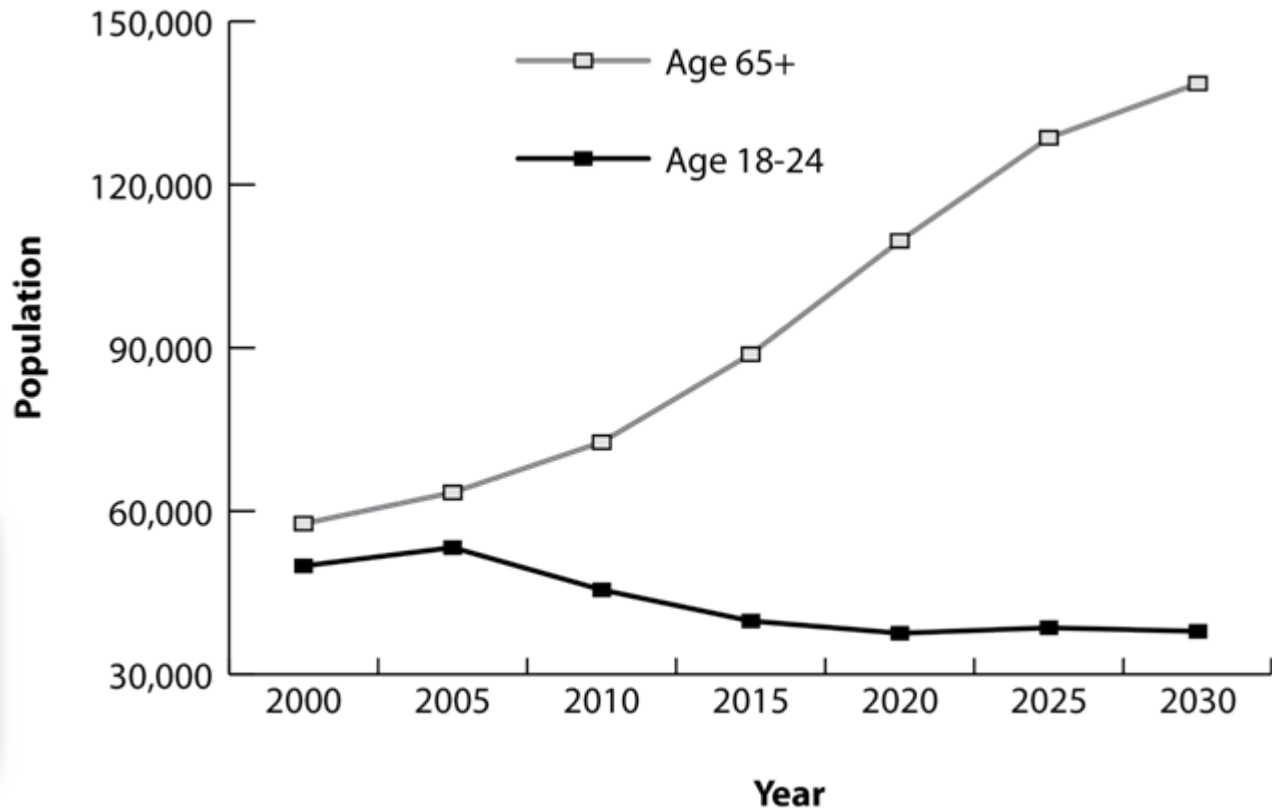
Job Change for October 2010: Select Industries



Industry	Oct 2010	Oct 2009	Change	
			n	%
Wyoming Total Nonag Employment	288,000	285,000	3,000	1.1
Natural Resources & Mining	27,300	24,200	3,100	12.8
Support Activities for Mining	13,000	10,500	2,500	23.8
Retail Trade	29,300	30,400	-1,100	-3.6
Health Care & Social Assistance	23,800	23,000	800	3.5
Leisure & Hospitality	30,400	32,100	-1,700	-5.3



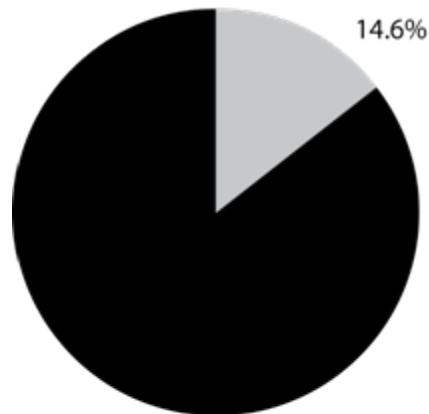
Demographics Influence Health Care Job Growth





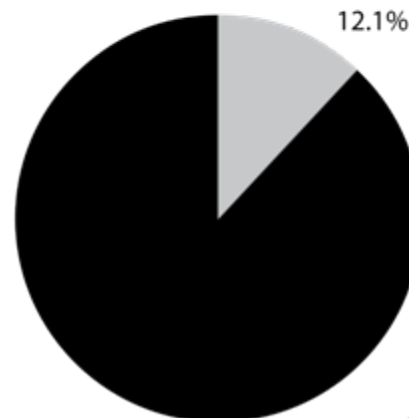
Health Care Employment and Wages, 2010Q2

Natrona County
Average Monthly Wage: \$3,709



Health Care & Social Assistance
All Other Industries

Wyoming
Average Monthly Wage: \$3,375





Health Care Employment and Wages

- Health care & social assistance makes up a larger percentage of the work force in Natrona County than in Wyoming
- The average monthly wage for health care & social assistance in Natrona County was 9.9% higher than in Wyoming





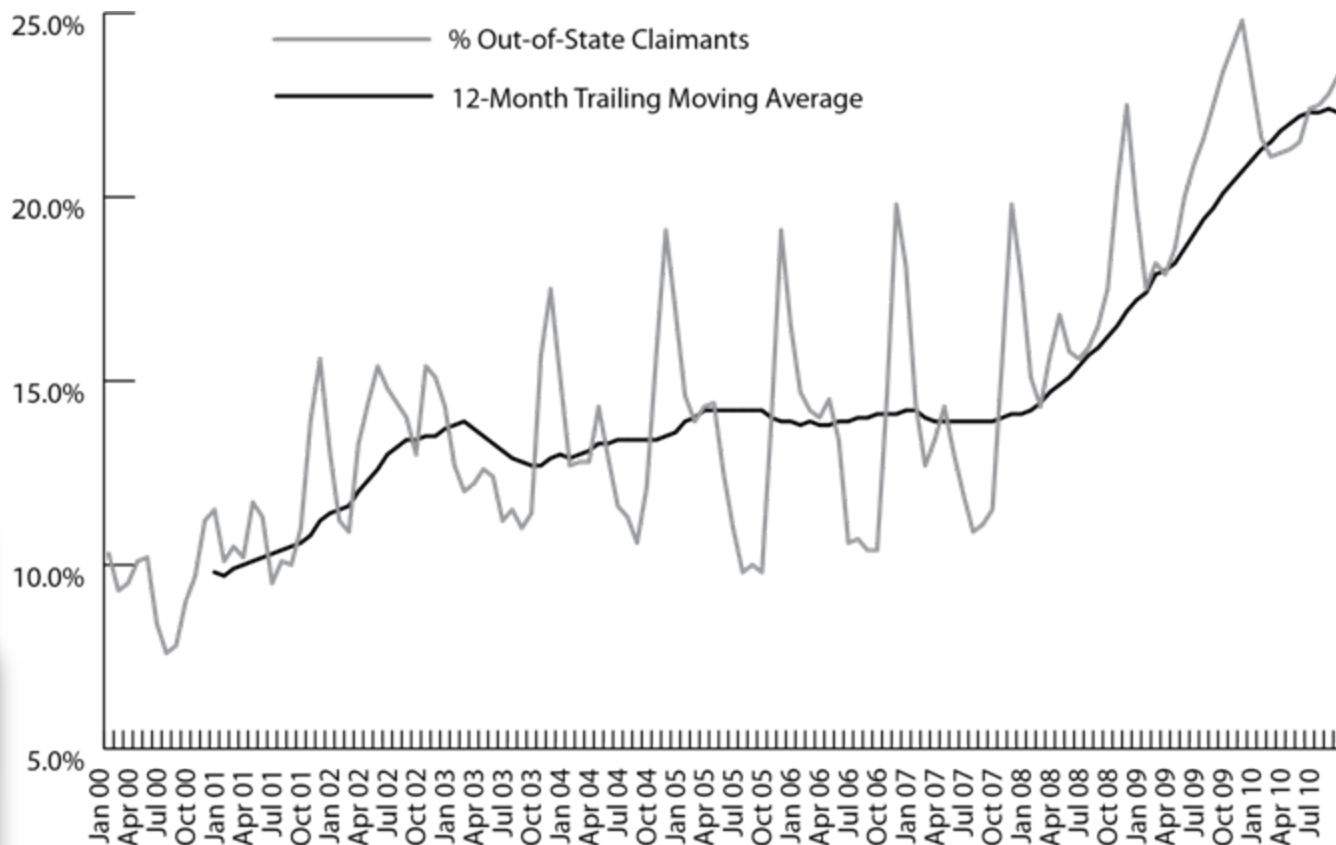
Non-Resident Workers

- Percentage has grown substantially from 2000
- Unemployment rate doesn't account for non-resident workers
- Non-resident UI claimants in 2009 unlikely to be employed in Wyoming during first two quarters of 2010





Non-Resident UI Claimants





Wyoming's Unemployment Rate



**State Unemployment Rates
June 2010
(Not Seasonally Adjusted)**

Rank	State	Unemp. Rate
.	.	.
.	.	.
.	.	.
17.	North Carolina	10.1
18.	Tennessee	10.1
19.	Arizona	9.7
20.	United States	9.6
21.	New Jersey	9.5
22.	Missouri	9.2
.	.	.
.	.	.
.	.	.
49.	Wyoming	6.5
50.	Vermont	5.9
51.	New Hampshire	5.7
52.	Nebraska	5
53.	South Dakota	4.3
54.	North Dakota	4.1

The state's unemployment rate does not account for non-resident workers who collect UI benefits from Wyoming but reside elsewhere



If Non-Resident UI Claimants Were Included ...



2/4/2011

**State Unemployment Rates
June 2010
(Not Seasonally Adjusted)**

Rank	State	Unemp. Rate
.	.	.
.	.	.
.	.	.
17.	North Carolina	10.1
18.	Tennessee	10.1
19.	Arizona	9.7
20.	United States	9.6
21.	New Jersey	9.5
22.	Missouri	9.2
.	.	.
.	.	.
.	.	.
35.	Wyoming	8.2
36.	Wisconsin	8.1
37.	Alaska	7.7
.	.	.
.	.	.
.	.	.

Wyoming's unemployment rate moves higher, from 49th highest to 35th



Re-Employment Opportunities Diminish

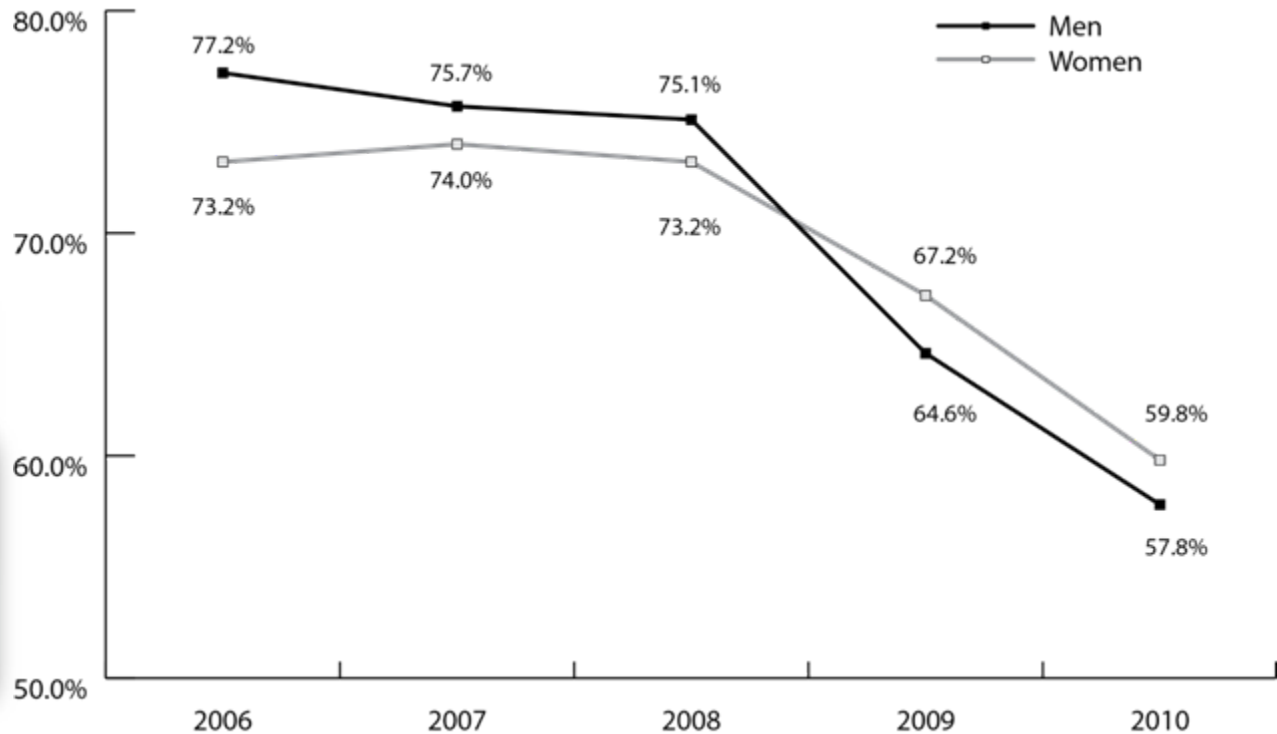
- 41.94% of those who filed Unemployment Insurance (UI) claims in 2009 were not employed in Wyoming during first or second quarter 2010
- Among non-residents, 74.12% who collected UI benefits in 2009 were not employed during first or second quarter 2010





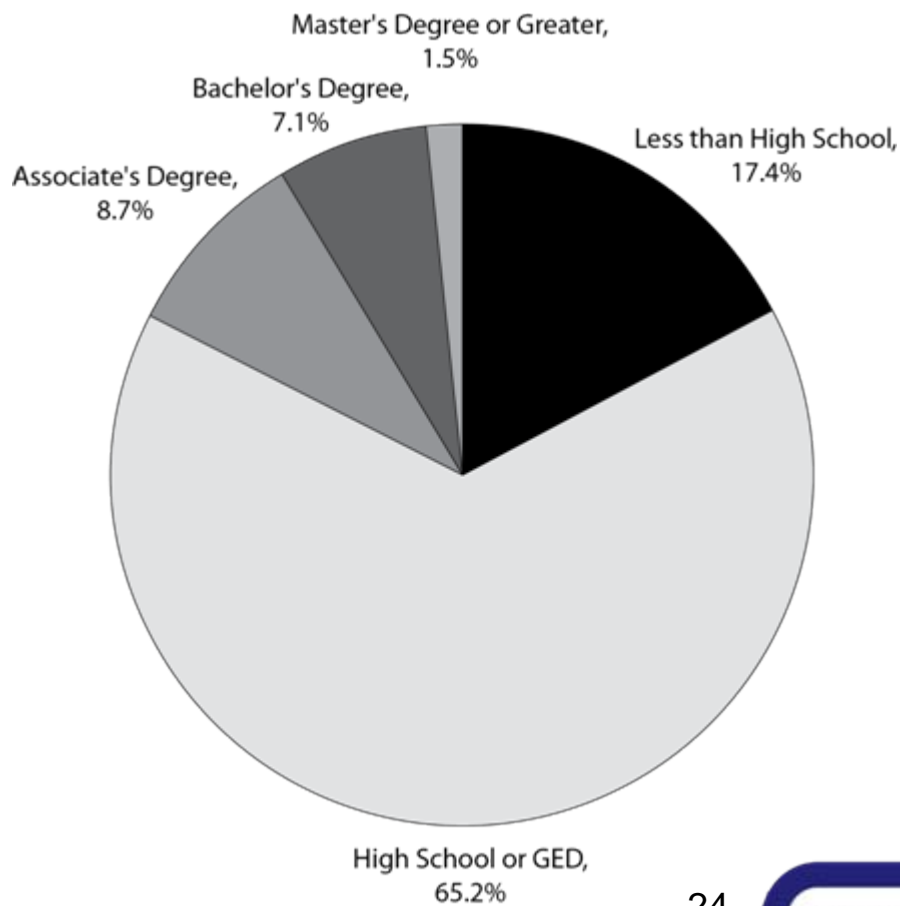
Post-Job Loss Re-Employment Chances Diminish

Percentage of UI claimants working in Wyoming in first or second quarter of the year following job loss





Wyoming UI Recipients by Education Level, 2009



2/4/2011

24



Consequences of Long-Term Unemployment

Nationally in September 2010, there were an estimated 6.1 million unemployed, or 43% of the unemployed, out of work 6 months or more.

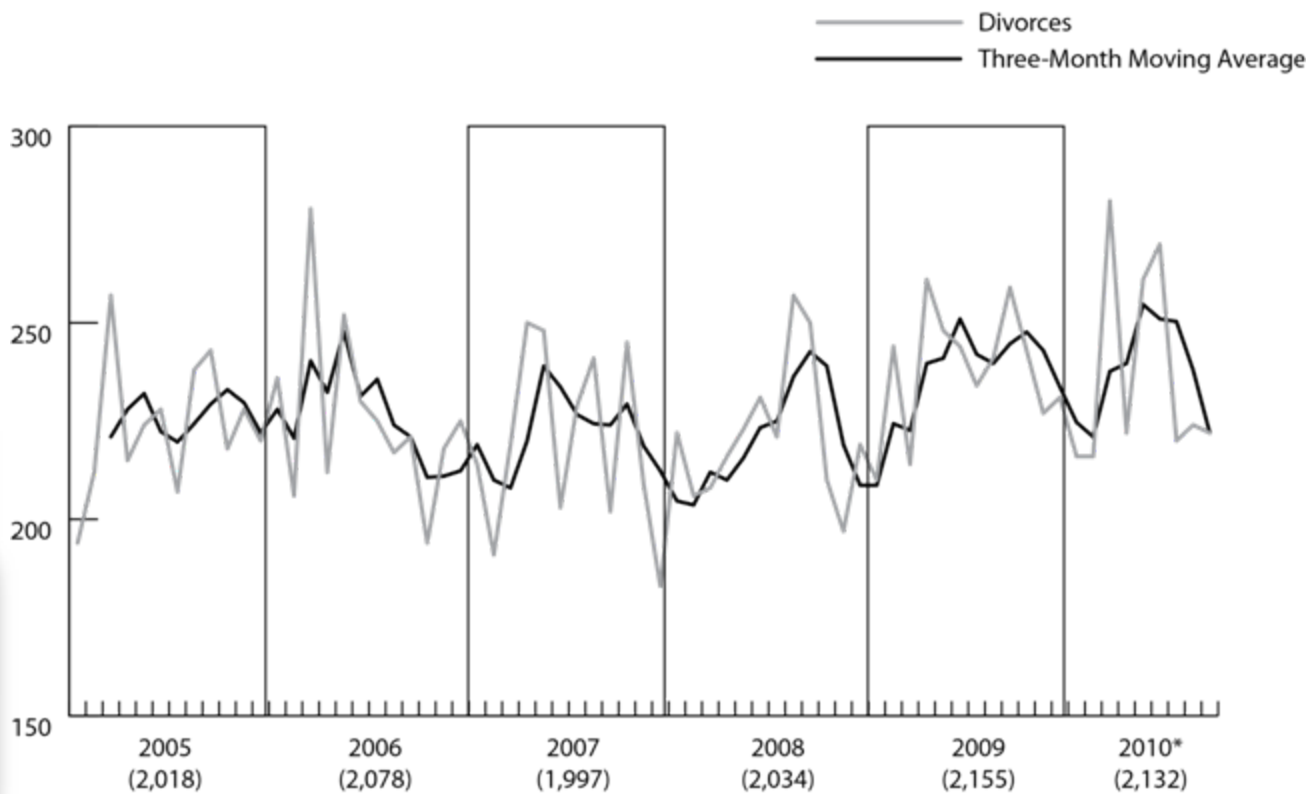
- Loss of self-confidence in abilities
- Skills begin to depreciate
- Resources to finance consumption depleted
- Family stress
- Sometimes divorce





Number of Divorces in Wyoming

Wyoming Divorces by Month, 2005-2009



Source: Wyoming Department of Health, Vital Statistics Services

* Provisional data





Contact us

Research & Planning

(307) 473-3814

doerd_r&p_web@state.wy.us

246 S. Center St.

Casper, WY 82601

<http://doe.state.wy.us/LMI>

