

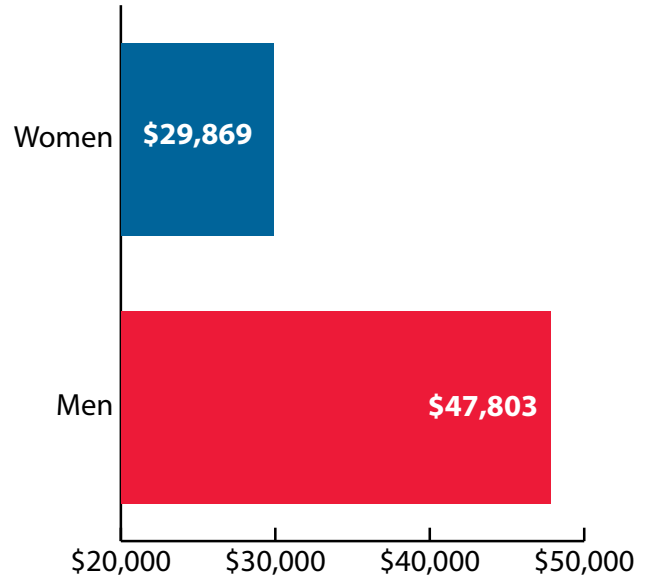
Wyoming All Industries at a Glance, 2018

Demographics of Persons Working in Wyoming by County, Industry, Age, & Gender, 2000-2018

Table: Total Number of Persons Working in Wyoming at Any Time by Gender and Age, 2017-2018

Gender	2017	2018	Change	
			N	%
Women	139,917	137,942	-1,975	-1.4
Men	161,600	159,654	-1,946	-1.2
Nonresidents	37,767	46,240	8,473	22.4
Total	339,284	343,836	4,552	1.3

Age	2017	2018	Change	
			N	%
00-19	19,945	19,956	11	0.1
20-24	31,661	30,737	-924	-2.9
25-34	68,560	66,210	-2,350	-3.4
35-44	60,336	61,026	690	1.1
45-54	51,843	50,554	-1,289	-2.5
55-64	50,411	49,595	-816	-1.6
65-Up	18,364	19,128	764	4.2
Nonresidents	38,164	46,630	8,466	22.2
Total	339,284	343,836	4,552	1.3



Women's Wages = 62.5% of Men's Wages

Figure: Average Annual Wages by Gender, 2018

Total = 343,836

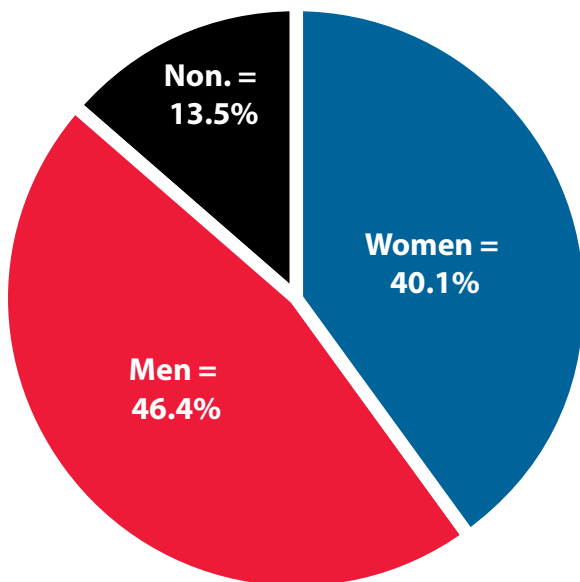


Figure: Persons Working by Gender, 2018

Total = 343,836

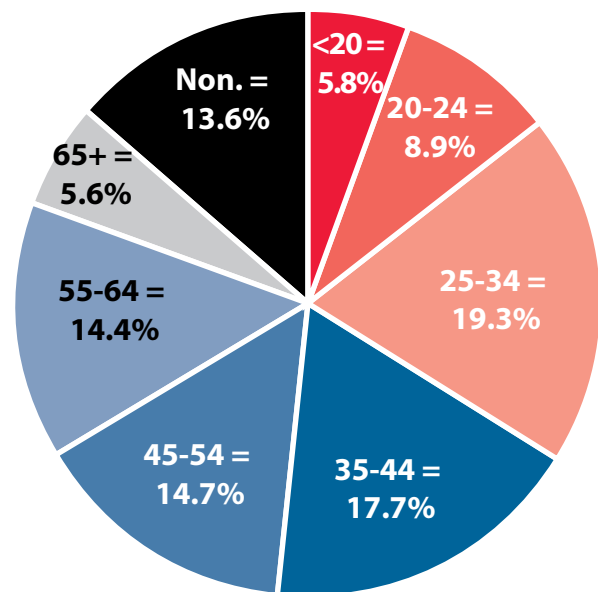


Figure: Persons Working by Age, 2018

Non. = Nonresidents; individuals for whom demographic data are not available.

Source: Demographics of Persons Working in Wyoming by County, Industry, Age, & Gender, 2000-2018. Research & Planning, Wyoming Department of Workforce Services. Prepared by M. Moore, Research & Planning, WY DWS, 7/25/19.

Persons Working in All Industries in Wyoming by Gender and Age, 2000-2018

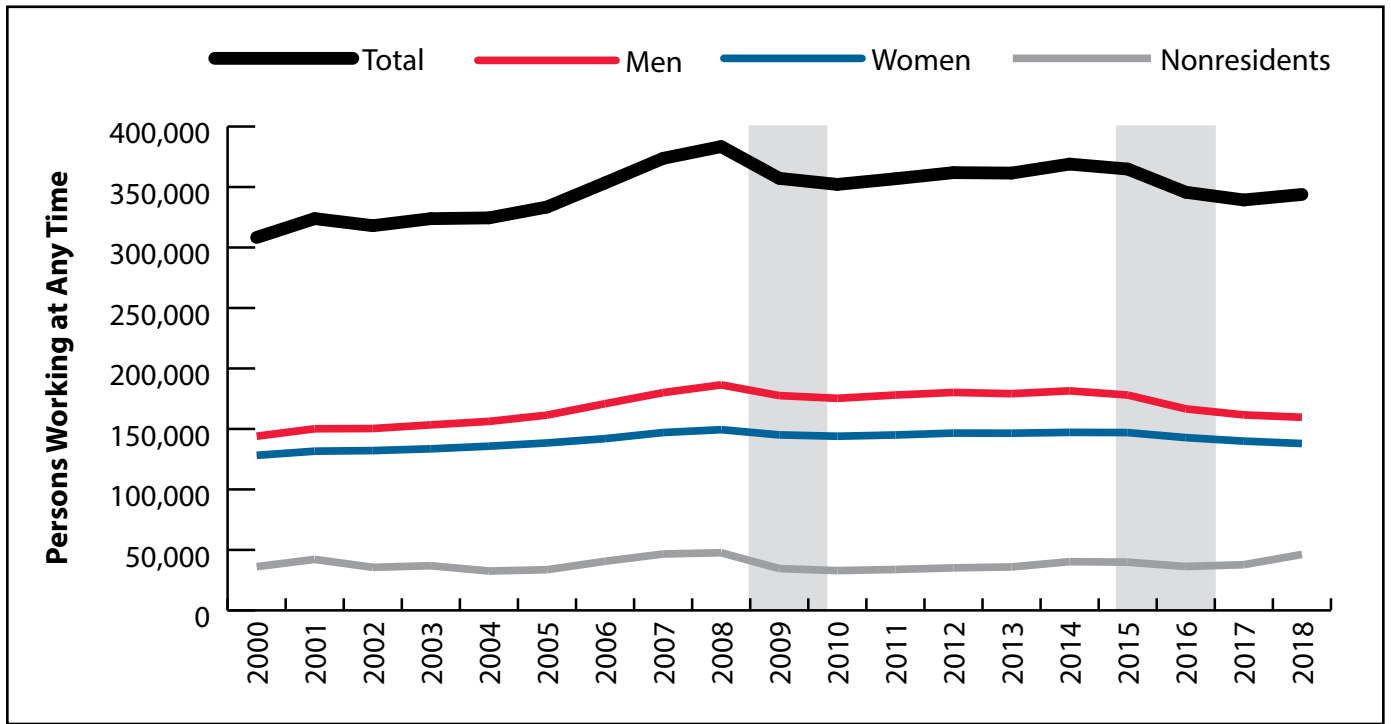


Figure: Persons Working in All Industries in Wyoming at Any Time by Gender, 2000-2018

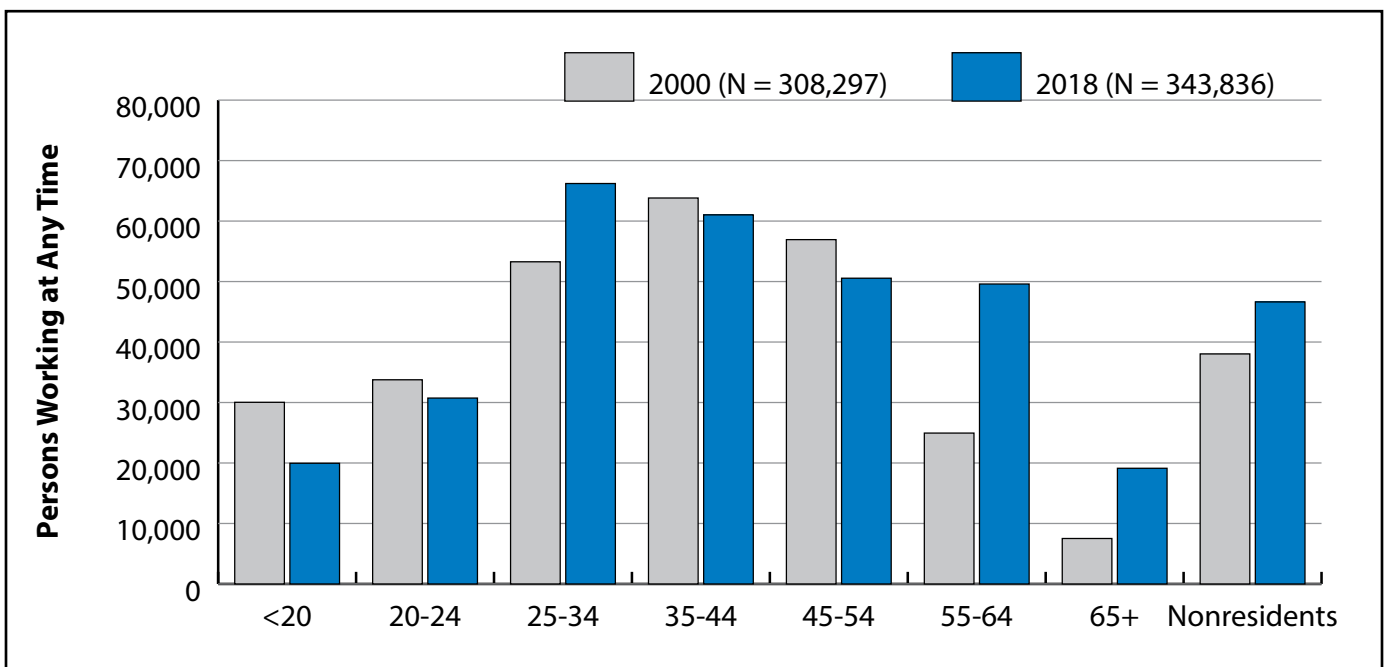


Figure: Persons Working in All Industries in Wyoming at Any Time by Age, 2000-2018

Note: Nonresidents are individuals for whom demographic data are not available.
 Shaded areas indicate periods of economic downturn: 2009Q1-2010Q1 and 2015Q2-2016Q4.
 Source: Demographics of Persons Working in Wyoming by County, Industry, Age, & Gender, 2000-2018. Research & Planning, Wyoming Department of Workforce Services. Prepared by M. Moore, Research & Planning, WY DWS, 7/31/19.

Average Earnings by Age and Gender in the All Industry in 2000

Gender	Age Group	Number	Age Percent	Gender Percent	Average Annual Wage	Average Quarters Worked	Average Annual Employers
Women	00-19	14,545	11.3	0.0	\$3,184	2.6	1.7
Women	20-24	15,760	12.3	0.0	\$7,426	3.0	1.9
Women	25-34	23,915	18.7	0.0	\$13,864	3.2	1.6
Women	35-44	30,609	23.9	0.0	\$18,174	3.5	1.5
Women	45-54	27,259	21.3	0.0	\$21,053	3.6	1.3
Women	55-64	11,493	9.0	0.0	\$17,531	3.4	1.3
Women	65-Up	3,353	2.6	0.0	\$8,921	3.1	1.1
Women	N/A	1,249	1.0	0.0	\$9,236	2.6	1.5
Women	Total	128,183	100.0	41.6	\$14,573	3.3	1.5
Men	00-19	15,488	10.8	0.0	\$3,692	2.5	1.7
Men	20-24	17,997	12.5	0.0	\$11,266	2.9	1.9
Men	25-34	29,351	20.4	0.0	\$21,905	3.3	1.6
Men	35-44	33,205	23.1	0.0	\$32,996	3.4	1.4
Men	45-54	29,673	20.6	0.0	\$39,958	3.5	1.3
Men	55-64	13,454	9.3	0.0	\$34,446	3.4	1.2
Men	65-Up	4,164	2.9	0.0	\$18,337	3.0	1.2
Men	N/A	656	0.5	0.0	\$19,074	2.6	1.4
Men	Total	143,988	100.0	46.7	\$25,950	3.2	1.5
N/A	N/A	36,126	100.0	0.0	\$6,419	1.7	1.2
N/A	Total	36,126	100.0	11.7	\$6,419	1.7	1.2
Total	00-19	30,033	9.7	0.0	\$3,446	2.6	1.7
Total	20-24	33,757	10.9	0.0	\$9,474	3.0	1.9
Total	25-34	53,266	17.3	0.0	\$18,295	3.3	1.6
Total	35-44	63,814	20.7	0.0	\$25,887	3.5	1.4
Total	45-54	56,932	18.5	0.0	\$30,907	3.5	1.3
Total	55-64	24,947	8.1	0.0	\$26,653	3.4	1.2
Total	65-Up	7,517	2.4	0.0	\$14,137	3.0	1.2
Total	N/A	38,031	12.3	0.0	\$6,729	1.7	1.2
Total	Total	308,297	100.0	100.0	\$18,931	3.1	1.5

Note: Persons worked any time during the year.

Industry Determination: Based on the industry of employment in which the person made the most money in the year.

N/A: Represents persons with demographic data that are unavailable.

N/A = Nonresidents, individuals for whom demographic data are not available.

Source: Demographics of Persons Working in Wyoming by County, Industry, Age, & Gender, 2000-2018.

Research & Planning, Wyoming Department of Workforce Services.

Prepared by M. Moore, Research & Planning, WY DWS, 7/31/19.

Average Earnings by Age and Gender in the All Industry in 2001

Gender	Age Group	Number	Age Percent	Gender Percent	Average Annual Wage	Average Quarters Worked	Average Annual Employers
Women	00-19	14,715	11.2	0.0	\$3,513	2.6	1.7
Women	20-24	16,560	12.6	0.0	\$7,970	2.9	1.9
Women	25-34	24,345	18.5	0.0	\$14,854	3.2	1.6
Women	35-44	30,049	22.8	0.0	\$19,131	3.4	1.5
Women	45-54	28,717	21.8	0.0	\$22,392	3.5	1.3
Women	55-64	12,386	9.4	0.0	\$18,933	3.4	1.3
Women	65-Up	3,649	2.8	0.0	\$9,785	3.0	1.1
Women	N/A	1,179	0.9	0.0	\$10,048	2.6	1.4
Women	Total	131,600	100.0	40.6	\$15,542	3.2	1.5
Men	00-19	15,809	10.5	0.0	\$4,141	2.5	1.7
Men	20-24	19,172	12.8	0.0	\$12,487	2.9	1.9
Men	25-34	30,814	20.5	0.0	\$23,747	3.2	1.6
Men	35-44	33,315	22.2	0.0	\$34,273	3.4	1.4
Men	45-54	31,357	20.9	0.0	\$41,251	3.5	1.3
Men	55-64	14,490	9.7	0.0	\$36,388	3.4	1.2
Men	65-Up	4,587	3.1	0.0	\$18,520	3.0	1.2
Men	N/A	590	0.4	0.0	\$20,571	2.6	1.4
Men	Total	150,134	100.0	46.4	\$27,284	3.2	1.5
N/A	N/A	42,151	100.0	0.0	\$6,856	1.6	1.1
N/A	Total	42,151	100.0	13.0	\$6,856	1.6	1.1
Total	00-19	30,524	9.4	0.0	\$3,838	2.6	1.7
Total	20-24	35,732	11.0	0.0	\$10,394	2.9	1.9
Total	25-34	55,159	17.0	0.0	\$19,822	3.2	1.6
Total	35-44	63,364	19.6	0.0	\$27,092	3.4	1.4
Total	45-54	60,074	18.5	0.0	\$32,236	3.5	1.3
Total	55-64	26,876	8.3	0.0	\$28,344	3.4	1.2
Total	65-Up	8,236	2.5	0.0	\$14,650	3.0	1.2
Total	N/A	43,920	13.6	0.0	\$7,126	1.6	1.1
Total	Total	323,885	100.0	100.0	\$19,854	3.0	1.5

Note: Persons worked any time during the year.

Industry Determination: Based on the industry of employment in which the person made the most money in the year.

N/A: Represents persons with demographic data that are unavailable.

N/A = Nonresidents, individuals for whom demographic data are not available.

Source: Demographics of Persons Working in Wyoming by County, Industry, Age, & Gender, 2000-2018.

Research & Planning, Wyoming Department of Workforce Services.

Prepared by M. Moore, Research & Planning, WY DWS, 7/31/19.

Average Earnings by Age and Gender in the All Industry in 2002

Gender	Age Group	Number	Age Percent	Gender Percent	Average Annual Wage	Average Quarters Worked	Average Annual Employers
Women	00-19	14,175	10.7	0.0	\$3,439	2.6	1.7
Women	20-24	16,837	12.7	0.0	\$8,263	2.9	1.8
Women	25-34	24,635	18.6	0.0	\$15,620	3.3	1.5
Women	35-44	28,885	21.9	0.0	\$20,154	3.5	1.4
Women	45-54	29,352	22.2	0.0	\$23,300	3.6	1.3
Women	55-64	13,468	10.2	0.0	\$20,305	3.4	1.2
Women	65-Up	3,719	2.8	0.0	\$10,193	3.1	1.1
Women	N/A	1,028	0.8	0.0	\$10,680	2.7	1.3
Women	Total	132,099	100.0	41.5	\$16,360	3.3	1.5
Men	00-19	15,050	10.0	0.0	\$3,922	2.5	1.6
Men	20-24	19,293	12.8	0.0	\$12,337	2.9	1.8
Men	25-34	31,363	20.9	0.0	\$24,129	3.2	1.6
Men	35-44	31,906	21.2	0.0	\$34,612	3.4	1.4
Men	45-54	31,871	21.2	0.0	\$42,343	3.5	1.3
Men	55-64	15,592	10.4	0.0	\$37,936	3.4	1.2
Men	65-Up	4,703	3.1	0.0	\$19,872	3.1	1.2
Men	N/A	565	0.4	0.0	\$21,829	2.6	1.3
Men	Total	150,343	100.0	47.3	\$27,969	3.2	1.4
N/A	N/A	35,592	100.0	0.0	\$7,018	1.7	1.1
N/A	Total	35,592	100.0	11.2	\$7,018	1.7	1.1
Total	00-19	29,225	9.2	0.0	\$3,688	2.6	1.6
Total	20-24	36,130	11.4	0.0	\$10,439	2.9	1.8
Total	25-34	55,998	17.6	0.0	\$20,386	3.2	1.6
Total	35-44	60,791	19.1	0.0	\$27,742	3.4	1.4
Total	45-54	61,223	19.3	0.0	\$33,214	3.5	1.3
Total	55-64	29,060	9.1	0.0	\$29,765	3.4	1.2
Total	65-Up	8,422	2.6	0.0	\$15,598	3.1	1.2
Total	N/A	37,185	11.7	0.0	\$7,344	1.7	1.1
Total	Total	318,034	100.0	100.0	\$20,802	3.1	1.4

Note: Persons worked any time during the year.

Industry Determination: Based on the industry of employment in which the person made the most money in the year.

N/A: Represents persons with demographic data that are unavailable.

N/A = Nonresidents, individuals for whom demographic data are not available.

Source: Demographics of Persons Working in Wyoming by County, Industry, Age, & Gender, 2000-2018.

Research & Planning, Wyoming Department of Workforce Services.

Prepared by M. Moore, Research & Planning, WY DWS, 7/31/19.

Average Earnings by Age and Gender in the All Industry in 2003

Gender	Age Group	Number	Age Percent	Gender Percent	Average Annual Wage	Average Quarters Worked	Average Annual Employers
Women	00-19	13,801	10.3	0.0	\$3,493	2.6	1.7
Women	20-24	17,329	13.0	0.0	\$8,469	2.9	1.8
Women	25-34	25,067	18.8	0.0	\$16,034	3.2	1.5
Women	35-44	27,820	20.8	0.0	\$20,751	3.5	1.4
Women	45-54	30,201	22.6	0.0	\$24,094	3.6	1.3
Women	55-64	14,360	10.8	0.0	\$21,495	3.5	1.2
Women	65-Up	4,025	3.0	0.0	\$10,867	3.1	1.1
Women	N/A	953	0.7	0.0	\$10,964	2.6	1.3
Women	Total	133,556	100.0	41.2	\$16,957	3.3	1.4
Men	00-19	14,441	9.4	0.0	\$3,996	2.5	1.6
Men	20-24	20,037	13.1	0.0	\$12,415	2.9	1.8
Men	25-34	32,400	21.1	0.0	\$24,629	3.2	1.5
Men	35-44	31,366	20.5	0.0	\$34,892	3.4	1.4
Men	45-54	32,754	21.4	0.0	\$42,606	3.5	1.3
Men	55-64	16,800	11.0	0.0	\$39,478	3.4	1.2
Men	65-Up	5,029	3.3	0.0	\$20,257	3.1	1.2
Men	N/A	546	0.4	0.0	\$19,503	2.5	1.4
Men	Total	153,373	100.0	47.4	\$28,493	3.2	1.4
N/A	N/A	36,914	100.0	0.0	\$6,901	1.6	1.1
N/A	Total	36,914	100.0	11.4	\$6,901	1.6	1.1
Total	00-19	28,242	8.7	0.0	\$3,750	2.6	1.6
Total	20-24	37,366	11.5	0.0	\$10,585	2.9	1.8
Total	25-34	57,467	17.7	0.0	\$20,880	3.2	1.5
Total	35-44	59,186	18.3	0.0	\$28,245	3.4	1.4
Total	45-54	62,955	19.4	0.0	\$33,725	3.5	1.3
Total	55-64	31,160	9.6	0.0	\$31,190	3.5	1.2
Total	65-Up	9,054	2.8	0.0	\$16,083	3.1	1.2
Total	N/A	38,413	11.9	0.0	\$7,181	1.7	1.1
Total	Total	323,843	100.0	100.0	\$21,274	3.1	1.4

Note: Persons worked any time during the year.

Industry Determination: Based on the industry of employment in which the person made the most money in the year.

N/A: Represents persons with demographic data that are unavailable.

N/A = Nonresidents, individuals for whom demographic data are not available.

Source: Demographics of Persons Working in Wyoming by County, Industry, Age, & Gender, 2000-2018.

Research & Planning, Wyoming Department of Workforce Services.

Prepared by M. Moore, Research & Planning, WY DWS, 7/31/19.

Average Earnings by Age and Gender in the All Industry in 2004

Gender	Age Group	Number	Age Percent	Gender Percent	Average Annual Wage	Average Quarters Worked	Average Annual Employers
Women	00-19	13,720	10.1	0.0	\$3,524	2.7	1.7
Women	20-24	17,671	13.0	0.0	\$8,867	3.0	1.8
Women	25-34	25,816	19.0	0.0	\$16,715	3.3	1.6
Women	35-44	27,172	20.0	0.0	\$21,679	3.5	1.4
Women	45-54	30,687	22.6	0.0	\$25,350	3.6	1.3
Women	55-64	15,585	11.5	0.0	\$22,706	3.5	1.2
Women	65-Up	4,261	3.1	0.0	\$11,360	3.2	1.1
Women	N/A	807	0.6	0.0	\$11,884	2.7	1.3
Women	Total	135,719	100.0	41.8	\$17,797	3.3	1.5
Men	00-19	14,229	9.1	0.0	\$4,258	2.5	1.6
Men	20-24	20,548	13.2	0.0	\$13,502	3.0	1.8
Men	25-34	33,497	21.4	0.0	\$26,242	3.3	1.6
Men	35-44	30,766	19.7	0.0	\$36,738	3.4	1.4
Men	45-54	33,534	21.5	0.0	\$44,672	3.5	1.3
Men	55-64	17,793	11.4	0.0	\$42,627	3.5	1.2
Men	65-Up	5,385	3.4	0.0	\$21,455	3.1	1.2
Men	N/A	476	0.3	0.0	\$22,822	2.7	1.4
Men	Total	156,228	100.0	48.1	\$30,278	3.3	1.4
N/A	N/A	32,529	100.0	0.0	\$7,498	1.8	1.1
N/A	Total	32,529	100.0	10.0	\$7,498	1.8	1.1
Total	00-19	27,949	8.6	0.0	\$3,897	2.6	1.6
Total	20-24	38,219	11.8	0.0	\$11,359	3.0	1.8
Total	25-34	59,313	18.3	0.0	\$22,095	3.3	1.6
Total	35-44	57,938	17.9	0.0	\$29,676	3.4	1.4
Total	45-54	64,221	19.8	0.0	\$35,439	3.6	1.3
Total	55-64	33,378	10.3	0.0	\$33,325	3.5	1.2
Total	65-Up	9,646	3.0	0.0	\$16,996	3.2	1.2
Total	N/A	33,812	10.4	0.0	\$7,819	1.8	1.1
Total	Total	324,476	100.0	100.0	\$22,774	3.1	1.4

Note: Persons worked any time during the year.

Industry Determination: Based on the industry of employment in which the person made the most money in the year.

N/A: Represents persons with demographic data that are unavailable.

N/A = Nonresidents, individuals for whom demographic data are not available.

Source: Demographics of Persons Working in Wyoming by County, Industry, Age, & Gender, 2000-2018.

Research & Planning, Wyoming Department of Workforce Services.

Prepared by M. Moore, Research & Planning, WY DWS, 7/31/19.

Average Earnings by Age and Gender in the All Industry in 2005

Gender	Age Group	Number	Age Percent	Gender Percent	Average Annual Wage	Average Quarters Worked	Average Annual Employers
Women	00-19	13,737	9.9	0.0	\$3,747	2.7	1.7
Women	20-24	17,961	13.0	0.0	\$9,297	3.0	1.8
Women	25-34	26,753	19.3	0.0	\$17,381	3.3	1.6
Women	35-44	26,692	19.3	0.0	\$22,887	3.5	1.5
Women	45-54	31,331	22.6	0.0	\$26,410	3.6	1.3
Women	55-64	16,765	12.1	0.0	\$24,390	3.5	1.2
Women	65-Up	4,538	3.3	0.0	\$12,114	3.2	1.2
Women	N/A	647	0.5	0.0	\$12,883	2.9	1.4
Women	Total	138,424	100.0	41.5	\$18,739	3.3	1.5
Men	00-19	14,491	9.0	0.0	\$4,674	2.6	1.7
Men	20-24	21,071	13.1	0.0	\$15,105	3.0	1.8
Men	25-34	34,933	21.6	0.0	\$28,390	3.3	1.6
Men	35-44	31,065	19.2	0.0	\$38,681	3.4	1.4
Men	45-54	34,573	21.4	0.0	\$46,779	3.5	1.3
Men	55-64	19,098	11.8	0.0	\$44,457	3.5	1.2
Men	65-Up	5,784	3.6	0.0	\$23,715	3.2	1.2
Men	N/A	402	0.2	0.0	\$26,019	2.8	1.5
Men	Total	161,417	100.0	48.4	\$32,173	3.3	1.5
N/A	N/A	33,612	100.0	0.0	\$8,861	1.9	1.2
N/A	Total	33,612	100.0	10.1	\$8,861	1.9	1.2
Total	00-19	28,228	8.5	0.0	\$4,223	2.6	1.7
Total	20-24	39,032	11.7	0.0	\$12,433	3.0	1.8
Total	25-34	61,686	18.5	0.0	\$23,615	3.3	1.6
Total	35-44	57,757	17.3	0.0	\$31,382	3.4	1.4
Total	45-54	65,904	19.8	0.0	\$37,095	3.6	1.3
Total	55-64	35,863	10.8	0.0	\$35,076	3.5	1.2
Total	65-Up	10,322	3.1	0.0	\$18,614	3.2	1.2
Total	N/A	34,661	10.4	0.0	\$9,135	1.9	1.2
Total	Total	333,453	100.0	100.0	\$24,247	3.1	1.4

Note: Persons worked any time during the year.

Industry Determination: Based on the industry of employment in which the person made the most money in the year.

N/A: Represents persons with demographic data that are unavailable.

N/A = Nonresidents, individuals for whom demographic data are not available.

Source: Demographics of Persons Working in Wyoming by County, Industry, Age, & Gender, 2000-2018.

Research & Planning, Wyoming Department of Workforce Services.

Prepared by M. Moore, Research & Planning, WY DWS, 7/31/19.

Average Earnings by Age and Gender in the All Industry in 2006

Gender	Age Group	Number	Age Percent	Gender Percent	Average Annual Wage	Average Quarters Worked	Average Annual Employers
Women	00-19	14,217	10.0	0.0	\$3,995	2.7	1.8
Women	20-24	17,924	12.6	0.0	\$10,332	3.0	1.9
Women	25-34	27,757	19.6	0.0	\$18,894	3.3	1.6
Women	35-44	26,585	18.7	0.0	\$24,538	3.5	1.5
Women	45-54	32,069	22.6	0.0	\$28,036	3.6	1.3
Women	55-64	18,069	12.7	0.0	\$26,121	3.5	1.2
Women	65-Up	4,848	3.4	0.0	\$13,135	3.2	1.2
Women	N/A	496	0.3	0.0	\$14,966	2.8	1.4
Women	Total	141,965	100.0	40.2	\$20,152	3.3	1.5
Men	00-19	15,284	8.9	0.0	\$5,293	2.6	1.7
Men	20-24	21,953	12.8	0.0	\$18,035	3.0	1.8
Men	25-34	37,529	22.0	0.0	\$31,979	3.3	1.6
Men	35-44	32,418	19.0	0.0	\$41,848	3.4	1.4
Men	45-54	36,086	21.1	0.0	\$49,853	3.5	1.3
Men	55-64	21,005	12.3	0.0	\$48,697	3.5	1.2
Men	65-Up	6,256	3.7	0.0	\$26,999	3.2	1.2
Men	N/A	325	0.2	0.0	\$29,307	2.7	1.5
Men	Total	170,856	100.0	48.3	\$35,316	3.3	1.5
N/A	N/A	40,572	100.0	0.0	\$10,671	1.9	1.2
N/A	Total	40,572	100.0	11.5	\$10,671	1.9	1.2
Total	00-19	29,501	8.3	0.0	\$4,668	2.6	1.7
Total	20-24	39,877	11.3	0.0	\$14,572	3.0	1.8
Total	25-34	65,286	18.5	0.0	\$26,415	3.3	1.6
Total	35-44	59,003	16.7	0.0	\$34,049	3.4	1.4
Total	45-54	68,155	19.3	0.0	\$39,588	3.5	1.3
Total	55-64	39,074	11.1	0.0	\$38,257	3.5	1.2
Total	65-Up	11,104	3.1	0.0	\$20,946	3.2	1.2
Total	N/A	41,393	11.7	0.0	\$10,869	1.9	1.2
Total	Total	353,393	100.0	100.0	\$26,395	3.1	1.4

Note: Persons worked any time during the year.

Industry Determination: Based on the industry of employment in which the person made the most money in the year.

N/A: Represents persons with demographic data that are unavailable.

N/A = Nonresidents, individuals for whom demographic data are not available.

Source: Demographics of Persons Working in Wyoming by County, Industry, Age, & Gender, 2000-2018.

Research & Planning, Wyoming Department of Workforce Services.

Prepared by M. Moore, Research & Planning, WY DWS, 7/31/19.

Average Earnings by Age and Gender in the All Industry in 2007

Gender	Age Group	Number	Age Percent	Gender Percent	Average Annual Wage	Average Quarters Worked	Average Annual Employers
Women	00-19	14,348	9.8	0.0	\$4,209	2.7	1.8
Women	20-24	18,614	12.7	0.0	\$11,071	3.0	1.8
Women	25-34	29,446	20.0	0.0	\$20,420	3.3	1.6
Women	35-44	26,728	18.2	0.0	\$26,499	3.5	1.5
Women	45-54	32,589	22.2	0.0	\$30,089	3.6	1.4
Women	55-64	19,535	13.3	0.0	\$28,634	3.6	1.2
Women	65-Up	5,346	3.6	0.0	\$14,377	3.2	1.2
Women	N/A	424	0.3	0.0	\$17,405	2.8	1.3
Women	Total	147,030	100.0	39.3	\$21,766	3.3	1.5
Men	00-19	15,578	8.7	0.0	\$5,600	2.6	1.7
Men	20-24	22,924	12.7	0.0	\$19,425	3.0	1.8
Men	25-34	40,690	22.6	0.0	\$34,633	3.3	1.5
Men	35-44	33,626	18.7	0.0	\$44,435	3.4	1.4
Men	45-54	37,239	20.7	0.0	\$52,264	3.5	1.3
Men	55-64	22,801	12.7	0.0	\$51,482	3.5	1.2
Men	65-Up	6,879	3.8	0.0	\$28,195	3.2	1.2
Men	N/A	292	0.2	0.0	\$31,225	2.6	1.4
Men	Total	180,029	100.0	48.2	\$37,544	3.3	1.4
N/A	N/A	46,618	100.0	0.0	\$12,099	1.9	1.2
N/A	Total	46,618	100.0	12.5	\$12,099	1.9	1.2
Total	00-19	29,926	8.0	0.0	\$4,933	2.6	1.7
Total	20-24	41,538	11.1	0.0	\$15,681	3.0	1.8
Total	25-34	70,136	18.8	0.0	\$28,666	3.3	1.6
Total	35-44	60,354	16.2	0.0	\$36,492	3.4	1.4
Total	45-54	69,828	18.7	0.0	\$41,915	3.5	1.3
Total	55-64	42,336	11.3	0.0	\$40,939	3.5	1.2
Total	65-Up	12,225	3.3	0.0	\$22,153	3.2	1.2
Total	N/A	47,334	12.7	0.0	\$12,265	1.9	1.2
Total	Total	373,677	100.0	100.0	\$28,162	3.1	1.4

Note: Persons worked any time during the year.

Industry Determination: Based on the industry of employment in which the person made the most money in the year.

N/A: Represents persons with demographic data that are unavailable.

N/A = Nonresidents, individuals for whom demographic data are not available.

Source: Demographics of Persons Working in Wyoming by County, Industry, Age, & Gender, 2000-2018.

Research & Planning, Wyoming Department of Workforce Services.

Prepared by M. Moore, Research & Planning, WY DWS, 7/31/19.

Average Earnings by Age and Gender in the All Industry in 2008

Gender	Age Group	Number	Age Percent	Gender Percent	Average Annual Wage	Average Quarters Worked	Average Annual Employers
Women	00-19	13,770	9.2	0.0	\$4,489	2.7	1.7
Women	20-24	18,764	12.6	0.0	\$11,907	3.0	1.8
Women	25-34	30,504	20.4	0.0	\$22,133	3.3	1.5
Women	35-44	26,629	17.8	0.0	\$28,165	3.5	1.5
Women	45-54	32,695	21.9	0.0	\$31,684	3.6	1.3
Women	55-64	20,855	14.0	0.0	\$30,691	3.6	1.2
Women	65-Up	5,800	3.9	0.0	\$15,877	3.3	1.2
Women	N/A	367	0.2	0.0	\$18,888	2.9	1.3
Women	Total	149,384	100.0	39.0	\$23,332	3.3	1.5
Men	00-19	14,848	8.0	0.0	\$6,041	2.6	1.6
Men	20-24	23,422	12.6	0.0	\$20,938	3.0	1.7
Men	25-34	43,440	23.3	0.0	\$37,282	3.3	1.5
Men	35-44	34,705	18.6	0.0	\$47,002	3.4	1.4
Men	45-54	38,034	20.4	0.0	\$54,249	3.5	1.3
Men	55-64	24,395	13.1	0.0	\$54,811	3.5	1.2
Men	65-Up	7,356	3.9	0.0	\$29,827	3.2	1.2
Men	N/A	228	0.1	0.0	\$37,062	2.8	1.4
Men	Total	186,428	100.0	48.6	\$40,011	3.3	1.4
N/A	N/A	47,634	100.0	0.0	\$12,653	1.9	1.2
N/A	Total	47,634	100.0	12.4	\$12,653	1.9	1.2
Total	00-19	28,618	7.5	0.0	\$5,294	2.7	1.7
Total	20-24	42,186	11.0	0.0	\$16,921	3.0	1.7
Total	25-34	73,944	19.3	0.0	\$31,033	3.3	1.5
Total	35-44	61,334	16.0	0.0	\$38,823	3.4	1.4
Total	45-54	70,729	18.4	0.0	\$43,818	3.5	1.3
Total	55-64	45,250	11.8	0.0	\$43,694	3.5	1.2
Total	65-Up	13,156	3.4	0.0	\$23,677	3.2	1.2
Total	N/A	48,229	12.6	0.0	\$12,815	1.9	1.2
Total	Total	383,446	100.0	100.0	\$30,114	3.1	1.4

Note: Persons worked any time during the year.

Industry Determination: Based on the industry of employment in which the person made the most money in the year.

N/A: Represents persons with demographic data that are unavailable.

N/A = Nonresidents, individuals for whom demographic data are not available.

Source: Demographics of Persons Working in Wyoming by County, Industry, Age, & Gender, 2000-2018.

Research & Planning, Wyoming Department of Workforce Services.

Prepared by M. Moore, Research & Planning, WY DWS, 7/31/19.

Average Earnings by Age and Gender in the All Industry in 2009

Gender	Age Group	Number	Age Percent	Gender Percent	Average Annual Wage	Average Quarters Worked	Average Annual Employers
Women	00-19	11,342	7.8	0.0	\$4,370	2.7	1.5
Women	20-24	17,855	12.3	0.0	\$11,555	3.0	1.6
Women	25-34	30,780	21.2	0.0	\$22,487	3.3	1.4
Women	35-44	25,752	17.8	0.0	\$28,893	3.5	1.3
Women	45-54	31,484	21.7	0.0	\$32,455	3.6	1.3
Women	55-64	21,561	14.9	0.0	\$31,645	3.6	1.2
Women	65-Up	5,984	4.1	0.0	\$16,614	3.3	1.1
Women	N/A	311	0.2	0.0	\$19,876	3.1	1.2
Women	Total	145,069	100.0	40.6	\$24,139	3.4	1.4
Men	00-19	11,499	6.5	0.0	\$5,291	2.6	1.4
Men	20-24	21,459	12.1	0.0	\$17,916	2.9	1.5
Men	25-34	42,602	24.0	0.0	\$34,505	3.3	1.4
Men	35-44	33,338	18.8	0.0	\$45,228	3.4	1.3
Men	45-54	36,200	20.4	0.0	\$52,315	3.5	1.2
Men	55-64	24,927	14.0	0.0	\$53,622	3.5	1.2
Men	65-Up	7,342	4.1	0.0	\$29,071	3.2	1.1
Men	N/A	185	0.1	0.0	\$32,682	2.8	1.2
Men	Total	177,552	100.0	49.7	\$38,710	3.3	1.3
N/A	N/A	34,527	100.0	0.0	\$12,741	2.0	1.1
N/A	Total	34,527	100.0	9.7	\$12,741	2.0	1.1
Total	00-19	22,841	6.4	0.0	\$4,834	2.6	1.4
Total	20-24	39,314	11.0	0.0	\$15,027	3.0	1.5
Total	25-34	73,382	20.5	0.0	\$29,464	3.3	1.4
Total	35-44	59,090	16.5	0.0	\$38,109	3.4	1.3
Total	45-54	67,684	19.0	0.0	\$43,077	3.5	1.2
Total	55-64	46,488	13.0	0.0	\$43,429	3.5	1.2
Total	65-Up	13,326	3.7	0.0	\$23,477	3.3	1.1
Total	N/A	35,023	9.8	0.0	\$12,910	2.0	1.1
Total	Total	357,148	100.0	100.0	\$30,281	3.2	1.3

Note: Persons worked any time during the year.

Industry Determination: Based on the industry of employment in which the person made the most money in the year.

N/A: Represents persons with demographic data that are unavailable.

N/A = Nonresidents, individuals for whom demographic data are not available.

Source: Demographics of Persons Working in Wyoming by County, Industry, Age, & Gender, 2000-2018.

Research & Planning, Wyoming Department of Workforce Services.

Prepared by M. Moore, Research & Planning, WY DWS, 7/31/19.

Average Earnings by Age and Gender in the All Industry in 2010

Gender	Age Group	Number	Age Percent	Gender Percent	Average Annual Wage	Average Quarters Worked	Average Annual Employers
Women	00-19	10,527	7.3	0.0	\$4,232	2.6	1.5
Women	20-24	17,397	12.1	0.0	\$11,329	3.0	1.6
Women	25-34	31,121	21.6	0.0	\$22,623	3.3	1.4
Women	35-44	25,422	17.7	0.0	\$29,470	3.5	1.4
Women	45-54	30,546	21.2	0.0	\$32,516	3.6	1.3
Women	55-64	22,528	15.6	0.0	\$32,482	3.6	1.2
Women	65-Up	6,125	4.3	0.0	\$17,074	3.3	1.1
Women	N/A	296	0.2	0.0	\$20,662	3.1	1.2
Women	Total	143,962	100.0	40.9	\$24,524	3.4	1.4
Men	00-19	10,564	6.0	0.0	\$5,173	2.5	1.4
Men	20-24	20,469	11.7	0.0	\$17,349	2.9	1.5
Men	25-34	42,573	24.3	0.0	\$35,335	3.2	1.4
Men	35-44	33,005	18.8	0.0	\$46,827	3.4	1.3
Men	45-54	35,146	20.0	0.0	\$53,235	3.5	1.2
Men	55-64	25,885	14.8	0.0	\$54,645	3.5	1.2
Men	65-Up	7,500	4.3	0.0	\$31,089	3.2	1.1
Men	N/A	166	0.1	0.0	\$35,375	2.9	1.3
Men	Total	175,308	100.0	49.8	\$39,839	3.3	1.3
N/A	N/A	32,882	100.0	0.0	\$14,036	2.0	1.1
N/A	Total	32,882	100.0	9.3	\$14,036	2.0	1.1
Total	00-19	21,091	6.0	0.0	\$4,704	2.5	1.4
Total	20-24	37,866	10.8	0.0	\$14,583	3.0	1.6
Total	25-34	73,694	20.9	0.0	\$29,967	3.3	1.4
Total	35-44	58,427	16.6	0.0	\$39,275	3.4	1.3
Total	45-54	65,692	18.7	0.0	\$43,601	3.5	1.2
Total	55-64	48,413	13.7	0.0	\$44,332	3.5	1.2
Total	65-Up	13,625	3.9	0.0	\$24,789	3.3	1.1
Total	N/A	33,344	9.5	0.0	\$14,202	2.1	1.1
Total	Total	352,152	100.0	100.0	\$31,169	3.2	1.3

Note: Persons worked any time during the year.

Industry Determination: Based on the industry of employment in which the person made the most money in the year.

N/A: Represents persons with demographic data that are unavailable.

N/A = Nonresidents, individuals for whom demographic data are not available.

Source: Demographics of Persons Working in Wyoming by County, Industry, Age, & Gender, 2000-2018.

Research & Planning, Wyoming Department of Workforce Services.

Prepared by M. Moore, Research & Planning, WY DWS, 7/31/19.

Average Earnings by Age and Gender in the All Industry in 2011

Gender	Age Group	Number	Age Percent	Gender Percent	Average Annual Wage	Average Quarters Worked	Average Annual Employers
Women	00-19	10,411	7.2	0.0	\$4,253	2.6	1.5
Women	20-24	17,650	12.2	0.0	\$11,335	3.0	1.7
Women	25-34	31,805	21.9	0.0	\$23,145	3.3	1.4
Women	35-44	25,703	17.7	0.0	\$30,438	3.5	1.4
Women	45-54	29,447	20.3	0.0	\$33,278	3.6	1.3
Women	55-64	23,230	16.0	0.0	\$33,350	3.6	1.2
Women	65-Up	6,482	4.5	0.0	\$18,294	3.3	1.1
Women	N/A	270	0.2	0.0	\$22,367	3.2	1.2
Women	Total	144,998	100.0	40.6	\$25,118	3.4	1.4
Men	00-19	10,774	6.1	0.0	\$5,404	2.5	1.5
Men	20-24	20,803	11.7	0.0	\$18,635	2.9	1.6
Men	25-34	43,518	24.4	0.0	\$37,464	3.3	1.4
Men	35-44	33,733	18.9	0.0	\$49,262	3.4	1.3
Men	45-54	34,420	19.3	0.0	\$55,365	3.5	1.2
Men	55-64	26,718	15.0	0.0	\$56,822	3.5	1.2
Men	65-Up	7,913	4.4	0.0	\$33,119	3.2	1.1
Men	N/A	150	0.1	0.0	\$36,442	2.9	1.2
Men	Total	178,029	100.0	49.9	\$41,731	3.3	1.3
N/A	N/A	33,810	100.0	0.0	\$14,354	2.0	1.1
N/A	Total	33,810	100.0	9.5	\$14,354	2.0	1.1
Total	00-19	21,185	5.9	0.0	\$4,839	2.6	1.5
Total	20-24	38,453	10.8	0.0	\$15,284	3.0	1.6
Total	25-34	75,323	21.1	0.0	\$31,417	3.3	1.4
Total	35-44	59,436	16.7	0.0	\$41,121	3.4	1.3
Total	45-54	63,867	17.9	0.0	\$45,181	3.5	1.3
Total	55-64	49,948	14.0	0.0	\$45,906	3.5	1.2
Total	65-Up	14,395	4.0	0.0	\$26,444	3.3	1.1
Total	N/A	34,230	9.6	0.0	\$14,514	2.1	1.1
Total	Total	356,837	100.0	100.0	\$32,387	3.2	1.3

Note: Persons worked any time during the year.

Industry Determination: Based on the industry of employment in which the person made the most money in the year.

N/A: Represents persons with demographic data that are unavailable.

N/A = Nonresidents, individuals for whom demographic data are not available.

Source: Demographics of Persons Working in Wyoming by County, Industry, Age, & Gender, 2000-2018.

Research & Planning, Wyoming Department of Workforce Services.

Prepared by M. Moore, Research & Planning, WY DWS, 7/31/19.

Average Earnings by Age and Gender in the All Industry in 2012

Gender	Age Group	Number	Age Percent	Gender Percent	Average Annual Wage	Average Quarters Worked	Average Annual Employers
Women	00-19	10,691	7.3	0.0	\$4,363	2.6	1.6
Women	20-24	17,676	12.1	0.0	\$11,604	3.0	1.7
Women	25-34	32,314	22.0	0.0	\$23,680	3.3	1.5
Women	35-44	26,190	17.9	0.0	\$31,004	3.5	1.4
Women	45-54	28,589	19.5	0.0	\$33,830	3.6	1.3
Women	55-64	23,853	16.3	0.0	\$33,742	3.6	1.2
Women	65-Up	6,960	4.7	0.0	\$19,637	3.3	1.1
Women	N/A	295	0.2	0.0	\$22,614	3.2	1.3
Women	Total	146,568	100.0	40.5	\$25,547	3.4	1.4
Men	00-19	10,941	6.1	0.0	\$5,588	2.5	1.5
Men	20-24	20,805	11.5	0.0	\$19,301	3.0	1.6
Men	25-34	44,291	24.6	0.0	\$38,858	3.3	1.4
Men	35-44	34,434	19.1	0.0	\$51,314	3.4	1.3
Men	45-54	33,545	18.6	0.0	\$56,523	3.5	1.2
Men	55-64	27,447	15.2	0.0	\$58,826	3.5	1.2
Men	65-Up	8,567	4.8	0.0	\$35,741	3.3	1.2
Men	N/A	148	0.1	0.0	\$36,670	2.9	1.3
Men	Total	180,178	100.0	49.8	\$43,140	3.3	1.3
N/A	N/A	35,141	100.0	0.0	\$15,202	2.0	1.1
N/A	Total	35,141	100.0	9.7	\$15,202	2.0	1.1
Total	00-19	21,632	6.0	0.0	\$4,982	2.6	1.5
Total	20-24	38,481	10.6	0.0	\$15,765	3.0	1.6
Total	25-34	76,605	21.2	0.0	\$32,456	3.3	1.4
Total	35-44	60,624	16.8	0.0	\$42,540	3.5	1.3
Total	45-54	62,134	17.2	0.0	\$46,082	3.5	1.3
Total	55-64	51,300	14.2	0.0	\$47,163	3.6	1.2
Total	65-Up	15,527	4.3	0.0	\$28,522	3.3	1.1
Total	N/A	35,584	9.8	0.0	\$15,353	2.1	1.1
Total	Total	361,887	100.0	100.0	\$33,302	3.2	1.3

Note: Persons worked any time during the year.

Industry Determination: Based on the industry of employment in which the person made the most money in the year.

N/A: Represents persons with demographic data that are unavailable.

N/A = Nonresidents, individuals for whom demographic data are not available.

Source: Demographics of Persons Working in Wyoming by County, Industry, Age, & Gender, 2000-2018.

Research & Planning, Wyoming Department of Workforce Services.

Prepared by M. Moore, Research & Planning, WY DWS, 7/31/19.

Average Earnings by Age and Gender in the All Industry in 2013

Gender	Age Group	Number	Age Percent	Gender Percent	Average Annual Wage	Average Quarters Worked	Average Annual Employers
Women	00-19	10,655	7.3	0.0	\$4,409	2.6	1.6
Women	20-24	17,517	12.0	0.0	\$11,851	3.0	1.7
Women	25-34	32,552	22.2	0.0	\$24,289	3.3	1.5
Women	35-44	26,316	18.0	0.0	\$31,590	3.5	1.4
Women	45-54	27,663	18.9	0.0	\$34,700	3.6	1.3
Women	55-64	24,059	16.4	0.0	\$34,714	3.6	1.2
Women	65-Up	7,398	5.1	0.0	\$19,995	3.3	1.1
Women	N/A	299	0.2	0.0	\$23,258	3.2	1.2
Women	Total	146,459	100.0	40.5	\$26,127	3.4	1.4
Men	00-19	10,760	6.0	0.0	\$5,542	2.5	1.5
Men	20-24	20,409	11.4	0.0	\$19,169	3.0	1.6
Men	25-34	44,012	24.6	0.0	\$39,276	3.3	1.4
Men	35-44	34,582	19.3	0.0	\$52,240	3.4	1.3
Men	45-54	32,437	18.1	0.0	\$56,871	3.5	1.3
Men	55-64	27,815	15.5	0.0	\$59,556	3.5	1.2
Men	65-Up	9,002	5.0	0.0	\$37,954	3.3	1.1
Men	N/A	124	0.1	0.0	\$38,691	2.9	1.2
Men	Total	179,141	100.0	49.6	\$43,729	3.3	1.3
N/A	N/A	35,912	100.0	0.0	\$14,654	2.0	1.1
N/A	Total	35,912	100.0	9.9	\$14,654	2.0	1.1
Total	00-19	21,415	5.9	0.0	\$4,978	2.6	1.5
Total	20-24	37,926	10.5	0.0	\$15,789	3.0	1.7
Total	25-34	76,564	21.2	0.0	\$32,904	3.3	1.4
Total	35-44	60,898	16.8	0.0	\$43,317	3.5	1.3
Total	45-54	60,100	16.6	0.0	\$46,666	3.5	1.3
Total	55-64	51,874	14.3	0.0	\$48,034	3.6	1.2
Total	65-Up	16,400	4.5	0.0	\$29,852	3.3	1.1
Total	N/A	36,335	10.1	0.0	\$14,806	2.1	1.1
Total	Total	361,512	100.0	100.0	\$33,710	3.2	1.3

Note: Persons worked any time during the year.

Industry Determination: Based on the industry of employment in which the person made the most money in the year.

N/A: Represents persons with demographic data that are unavailable.

N/A = Nonresidents, individuals for whom demographic data are not available.

Source: Demographics of Persons Working in Wyoming by County, Industry, Age, & Gender, 2000-2018.

Research & Planning, Wyoming Department of Workforce Services.

Prepared by M. Moore, Research & Planning, WY DWS, 7/31/19.

Average Earnings by Age and Gender in the All Industry in 2014

Gender	Age Group	Number	Age Percent	Gender Percent	Average Annual Wage	Average Quarters Worked	Average Annual Employers
Women	00-19	10,918	7.4	0.0	\$4,586	2.6	1.6
Women	20-24	17,320	11.8	0.0	\$12,554	3.0	1.7
Women	25-34	32,777	22.3	0.0	\$24,862	3.3	1.5
Women	35-44	26,882	18.3	0.0	\$32,443	3.5	1.4
Women	45-54	26,863	18.3	0.0	\$35,544	3.6	1.3
Women	55-64	24,376	16.6	0.0	\$35,523	3.6	1.2
Women	65-Up	7,681	5.2	0.0	\$20,748	3.3	1.1
Women	N/A	352	0.2	0.0	\$23,670	3.1	1.2
Women	Total	147,169	100.0	39.9	\$26,792	3.4	1.4
Men	00-19	11,061	6.1	0.0	\$5,923	2.5	1.6
Men	20-24	20,334	11.2	0.0	\$20,757	3.0	1.7
Men	25-34	44,916	24.7	0.0	\$41,093	3.3	1.4
Men	35-44	35,307	19.5	0.0	\$55,099	3.4	1.3
Men	45-54	31,915	17.6	0.0	\$58,797	3.5	1.3
Men	55-64	28,355	15.6	0.0	\$61,039	3.5	1.2
Men	65-Up	9,478	5.2	0.0	\$38,921	3.3	1.1
Men	N/A	136	0.1	0.0	\$34,455	2.8	1.2
Men	Total	181,502	100.0	49.2	\$45,507	3.3	1.4
N/A	N/A	40,268	100.0	0.0	\$15,396	2.0	1.1
N/A	Total	40,268	100.0	10.9	\$15,396	2.0	1.1
Total	00-19	21,979	6.0	0.0	\$5,259	2.6	1.6
Total	20-24	37,654	10.2	0.0	\$16,984	3.0	1.7
Total	25-34	77,693	21.1	0.0	\$34,245	3.3	1.5
Total	35-44	62,189	16.9	0.0	\$45,306	3.5	1.4
Total	45-54	58,778	15.9	0.0	\$48,170	3.5	1.3
Total	55-64	52,731	14.3	0.0	\$49,243	3.6	1.2
Total	65-Up	17,159	4.7	0.0	\$30,786	3.3	1.1
Total	N/A	40,756	11.0	0.0	\$15,531	2.1	1.1
Total	Total	368,939	100.0	100.0	\$34,755	3.2	1.4

Note: Persons worked any time during the year.

Industry Determination: Based on the industry of employment in which the person made the most money in the year.

N/A: Represents persons with demographic data that are unavailable.

N/A = Nonresidents, individuals for whom demographic data are not available.

Source: Demographics of Persons Working in Wyoming by County, Industry, Age, & Gender, 2000-2018.

Research & Planning, Wyoming Department of Workforce Services.

Prepared by M. Moore, Research & Planning, WY DWS, 7/31/19.

Average Earnings by Age and Gender in the All Industry in 2015

Gender	Age Group	Number	Age Percent	Gender Percent	Average Annual Wage	Average Quarters Worked	Average Annual Employers
Women	00-19	10,977	7.5	0.0	\$4,930	2.7	1.6
Women	20-24	16,900	11.5	0.0	\$13,026	3.0	1.7
Women	25-34	32,872	22.4	0.0	\$25,815	3.4	1.5
Women	35-44	27,349	18.6	0.0	\$33,461	3.5	1.4
Women	45-54	26,064	17.7	0.0	\$37,080	3.6	1.3
Women	55-64	24,435	16.6	0.0	\$36,573	3.6	1.2
Women	65-Up	8,036	5.5	0.0	\$21,583	3.3	1.1
Women	N/A	349	0.2	0.0	\$23,434	3.0	1.2
Women	Total	146,982	100.0	40.3	\$27,756	3.4	1.4
Men	00-19	10,925	6.1	0.0	\$5,719	2.6	1.5
Men	20-24	19,314	10.8	0.0	\$19,860	3.0	1.7
Men	25-34	43,470	24.4	0.0	\$39,897	3.3	1.4
Men	35-44	35,073	19.7	0.0	\$54,579	3.4	1.3
Men	45-54	30,985	17.4	0.0	\$59,220	3.5	1.3
Men	55-64	28,413	16.0	0.0	\$61,338	3.5	1.2
Men	65-Up	9,715	5.5	0.0	\$39,445	3.3	1.1
Men	N/A	129	0.1	0.0	\$34,857	2.9	1.3
Men	Total	178,024	100.0	48.8	\$45,275	3.3	1.4
N/A	N/A	39,853	100.0	0.0	\$14,708	2.1	1.1
N/A	Total	39,853	100.0	10.9	\$14,708	2.1	1.1
Total	00-19	21,902	6.0	0.0	\$5,324	2.6	1.5
Total	20-24	36,214	9.9	0.0	\$16,671	3.0	1.7
Total	25-34	76,342	20.9	0.0	\$33,833	3.3	1.5
Total	35-44	62,422	17.1	0.0	\$45,327	3.5	1.4
Total	45-54	57,049	15.6	0.0	\$49,105	3.5	1.3
Total	55-64	52,848	14.5	0.0	\$49,888	3.6	1.2
Total	65-Up	17,751	4.9	0.0	\$31,359	3.3	1.1
Total	N/A	40,331	11.1	0.0	\$14,848	2.1	1.1
Total	Total	364,859	100.0	100.0	\$34,879	3.2	1.4

Note: Persons worked any time during the year.

Industry Determination: Based on the industry of employment in which the person made the most money in the year.

N/A: Represents persons with demographic data that are unavailable.

N/A = Nonresidents, individuals for whom demographic data are not available.

Source: Demographics of Persons Working in Wyoming by County, Industry, Age, & Gender, 2000-2018.

Research & Planning, Wyoming Department of Workforce Services.

Prepared by M. Moore, Research & Planning, WY DWS, 7/31/19.

Average Earnings by Age and Gender in the All Industry in 2016

Gender	Age Group	Number	Age Percent	Gender Percent	Average Annual Wage	Average Quarters Worked	Average Annual Employers
Women	00-19	10,223	7.2	0.0	\$4,793	2.7	1.5
Women	20-24	15,955	11.2	0.0	\$13,301	3.1	1.7
Women	25-34	31,818	22.3	0.0	\$26,215	3.4	1.5
Women	35-44	27,076	19.0	0.0	\$34,044	3.6	1.4
Women	45-54	25,041	17.5	0.0	\$37,486	3.6	1.3
Women	55-64	24,202	16.9	0.0	\$36,394	3.6	1.2
Women	65-Up	8,178	5.7	0.0	\$21,679	3.3	1.1
Women	N/A	326	0.2	0.0	\$25,623	3.3	1.3
Women	Total	142,819	100.0	41.3	\$28,163	3.4	1.4
Men	00-19	9,961	6.0	0.0	\$5,383	2.6	1.4
Men	20-24	17,238	10.3	0.0	\$17,973	3.0	1.6
Men	25-34	39,929	24.0	0.0	\$37,512	3.3	1.4
Men	35-44	33,415	20.1	0.0	\$53,196	3.5	1.3
Men	45-54	29,007	17.4	0.0	\$57,536	3.5	1.2
Men	55-64	27,220	16.3	0.0	\$59,205	3.5	1.2
Men	65-Up	9,702	5.8	0.0	\$39,142	3.3	1.1
Men	N/A	107	0.1	0.0	\$35,042	3.1	1.3
Men	Total	166,579	100.0	48.2	\$43,840	3.3	1.3
N/A	N/A	36,271	100.0	0.0	\$14,230	2.1	1.2
N/A	Total	36,271	100.0	10.5	\$14,230	2.1	1.2
Total	00-19	20,184	5.8	0.0	\$5,084	2.6	1.5
Total	20-24	33,193	9.6	0.0	\$15,727	3.1	1.6
Total	25-34	71,747	20.8	0.0	\$32,502	3.4	1.4
Total	35-44	60,491	17.5	0.0	\$44,624	3.5	1.3
Total	45-54	54,048	15.6	0.0	\$48,247	3.6	1.3
Total	55-64	51,422	14.9	0.0	\$48,469	3.6	1.2
Total	65-Up	17,880	5.2	0.0	\$31,155	3.3	1.1
Total	N/A	36,704	10.6	0.0	\$14,392	2.1	1.2
Total	Total	345,669	100.0	100.0	\$34,256	3.2	1.3

Note: Persons worked any time during the year.

Industry Determination: Based on the industry of employment in which the person made the most money in the year.

N/A: Represents persons with demographic data that are unavailable.

N/A = Nonresidents, individuals for whom demographic data are not available.

Source: Demographics of Persons Working in Wyoming by County, Industry, Age, & Gender, 2000-2018.

Research & Planning, Wyoming Department of Workforce Services.

Prepared by M. Moore, Research & Planning, WY DWS, 7/31/19.

Average Earnings by Age and Gender in the All Industry in 2017

Gender	Age Group	Number	Age Percent	Gender Percent	Average Annual Wage	Average Quarters Worked	Average Annual Employers
Women	00-19	10,045	7.2	0.0	\$4,936	2.7	1.5
Women	20-24	15,385	11.0	0.0	\$13,416	3.1	1.7
Women	25-34	30,559	21.8	0.0	\$26,936	3.4	1.5
Women	35-44	27,238	19.5	0.0	\$35,064	3.6	1.4
Women	45-54	24,104	17.2	0.0	\$38,404	3.6	1.3
Women	55-64	23,917	17.1	0.0	\$36,839	3.6	1.2
Women	65-Up	8,370	6.0	0.0	\$22,734	3.3	1.1
Women	N/A	299	0.2	0.0	\$27,042	3.2	1.2
Women	Total	139,917	100.0	41.2	\$28,870	3.4	1.4
Men	00-19	9,900	6.1	0.0	\$5,782	2.6	1.5
Men	20-24	16,276	10.1	0.0	\$18,780	3.0	1.7
Men	25-34	38,001	23.5	0.0	\$39,786	3.4	1.4
Men	35-44	33,098	20.5	0.0	\$56,328	3.5	1.3
Men	45-54	27,739	17.2	0.0	\$60,299	3.5	1.3
Men	55-64	26,494	16.4	0.0	\$60,700	3.5	1.2
Men	65-Up	9,994	6.2	0.0	\$40,388	3.3	1.1
Men	N/A	98	0.1	0.0	\$38,890	3.2	1.2
Men	Total	161,600	100.0	47.6	\$45,962	3.4	1.3
N/A	N/A	37,767	100.0	0.0	\$15,041	2.2	1.2
N/A	Total	37,767	100.0	11.1	\$15,041	2.2	1.2
Total	00-19	19,945	5.9	0.0	\$5,356	2.6	1.5
Total	20-24	31,661	9.3	0.0	\$16,174	3.1	1.7
Total	25-34	68,560	20.2	0.0	\$34,059	3.4	1.5
Total	35-44	60,336	17.8	0.0	\$46,728	3.5	1.3
Total	45-54	51,843	15.3	0.0	\$50,119	3.6	1.3
Total	55-64	50,411	14.9	0.0	\$49,379	3.6	1.2
Total	65-Up	18,364	5.4	0.0	\$32,342	3.3	1.1
Total	N/A	38,164	11.2	0.0	\$15,197	2.2	1.2
Total	Total	339,284	100.0	100.0	\$35,471	3.2	1.3

Note: Persons worked any time during the year.

Industry Determination: Based on the industry of employment in which the person made the most money in the year.

N/A: Represents persons with demographic data that are unavailable.

N/A = Nonresidents, individuals for whom demographic data are not available.

Source: Demographics of Persons Working in Wyoming by County, Industry, Age, & Gender, 2000-2018.

Research & Planning, Wyoming Department of Workforce Services.

Prepared by M. Moore, Research & Planning, WY DWS, 7/31/19.

Average Earnings by Age and Gender in the All Industry in 2018

Gender	Age Group	Number	Age Percent	Gender Percent	Average Annual Wage	Average Quarters Worked	Average Annual Employers
Women	00-19	9,823	7.1	0.0	\$5,303	2.7	1.6
Women	20-24	14,836	10.8	0.0	\$14,040	3.1	1.7
Women	25-34	29,635	21.5	0.0	\$27,888	3.4	1.5
Women	35-44	27,598	20.0	0.0	\$36,317	3.6	1.4
Women	45-54	23,530	17.1	0.0	\$39,492	3.6	1.3
Women	55-64	23,479	17.0	0.0	\$37,888	3.6	1.2
Women	65-Up	8,749	6.3	0.0	\$23,343	3.3	1.1
Women	N/A	292	0.2	0.0	\$27,652	3.4	1.3
Women	Total	137,942	100.0	40.1	\$29,869	3.4	1.4
Men	00-19	10,133	6.3	0.0	\$6,312	2.6	1.5
Men	20-24	15,901	10.0	0.0	\$20,224	3.1	1.7
Men	25-34	36,574	22.9	0.0	\$41,849	3.4	1.4
Men	35-44	33,428	20.9	0.0	\$58,750	3.5	1.3
Men	45-54	27,024	16.9	0.0	\$62,729	3.5	1.3
Men	55-64	26,116	16.4	0.0	\$62,383	3.5	1.2
Men	65-Up	10,379	6.5	0.0	\$40,803	3.3	1.1
Men	N/A	99	0.1	0.0	\$41,344	3.1	1.3
Men	Total	159,654	100.0	46.4	\$47,803	3.4	1.4
N/A	25-34	1	0.0	0.0	\$362	1.0	1.0
N/A	N/A	46,239	100.0	0.0	\$16,106	2.1	1.2
N/A	Total	46,240	100.0	13.4	\$16,105	2.1	1.2
Total	00-19	19,956	5.8	0.0	\$5,815	2.7	1.5
Total	20-24	30,737	8.9	0.0	\$17,239	3.1	1.7
Total	25-34	66,210	19.3	0.0	\$35,600	3.4	1.5
Total	35-44	61,026	17.7	0.0	\$48,605	3.5	1.3
Total	45-54	50,554	14.7	0.0	\$51,913	3.6	1.3
Total	55-64	49,595	14.4	0.0	\$50,787	3.6	1.2
Total	65-Up	19,128	5.6	0.0	\$32,817	3.3	1.1
Total	N/A	46,630	13.6	0.0	\$16,231	2.1	1.2
Total	Total	343,836	100.0	100.0	\$36,346	3.2	1.3

Note: Persons worked any time during the year.

Industry Determination: Based on the industry of employment in which the person made the most money in the year.

N/A: Represents persons with demographic data that are unavailable.

N/A = Nonresidents, individuals for whom demographic data are not available.

Source: Demographics of Persons Working in Wyoming by County, Industry, Age, & Gender, 2000-2018.

Research & Planning, Wyoming Department of Workforce Services.

Prepared by M. Moore, Research & Planning, WY DWS, 7/31/19.