

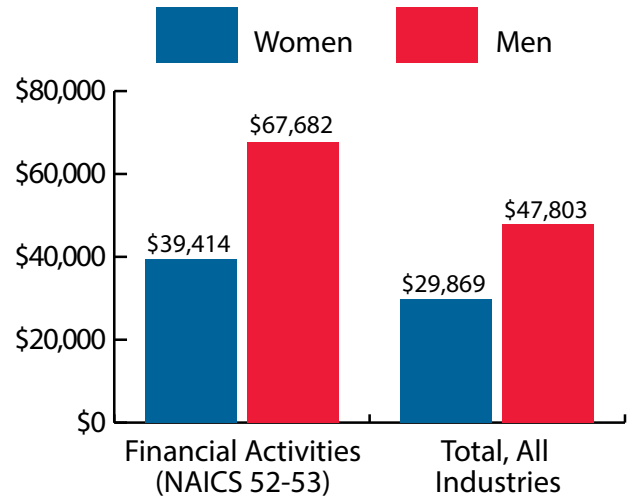
Wyoming Financial Activities (NAICS 52-53) at a Glance, 2018

Demographics of Persons Working in Wyoming by County, Industry, Age, & Gender, 2000-2018

Table: Total Number of Persons Working in Financial Activities (NAICS 52-53) in Wyoming at Any Time by Gender and Age, 2017-2018

Gender	2017	2018	Change	
			N	%
Women	7,501	7,533	32	0.4
Men	4,761	4,799	38	0.8
Nonresidents	702	851	149	21.2
Total	12,964	13,183	219	1.7

Age	2017	2018	Change	
			N	%
00-19	254	247	-7	-2.8
20-24	954	974	20	2.1
25-34	2,936	2,867	-69	-2.4
35-44	2,615	2,709	94	3.6
45-54	2,251	2,239	-12	-0.5
55-64	2,327	2,351	24	1.0
65-Up	909	932	23	2.5
Nonresidents	718	864	146	20.3
Total	12,964	13,183	219	1.7



Women's Wages as % of Men's Wages
 Financial Activities (NAICS 52-53): 58.2%
 Total, All Industries: 62.5%

Figure: Average Annual Wages by Gender, 2018

Total = 13,183

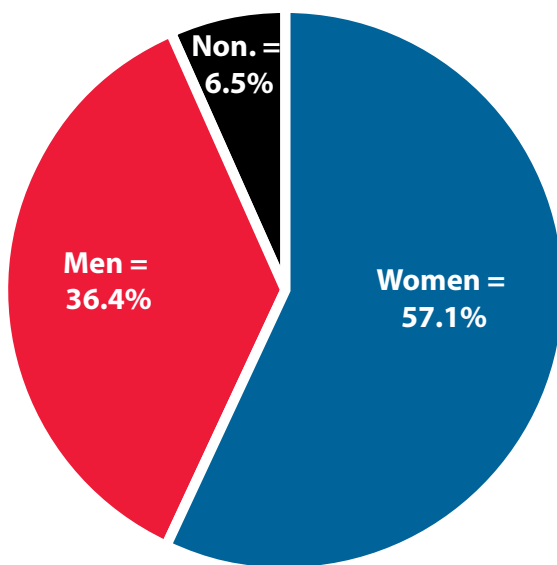


Figure: Persons Working by Gender, 2018

Total = 13,183

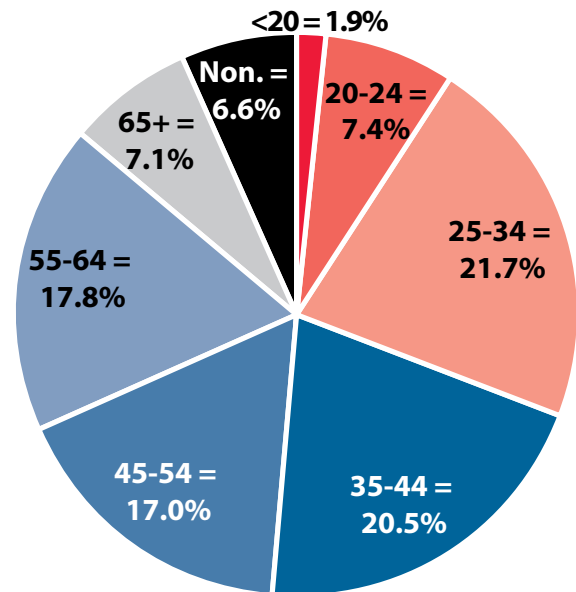


Figure: Persons Working by Age, 2018

Note: Nonresidents are individuals for whom demographic data are not available.
 Source: Demographics of Persons Working in Wyoming by County, Industry, Age, & Gender, 2000-2018. Research & Planning, Wyoming Department of Workforce Services. Prepared by M. Moore, Research & Planning, WY DWS, 7/31/19.

Persons Working in Financial Activities (NAICS 52-53) in Wyoming by Gender and Age, 2000-2018

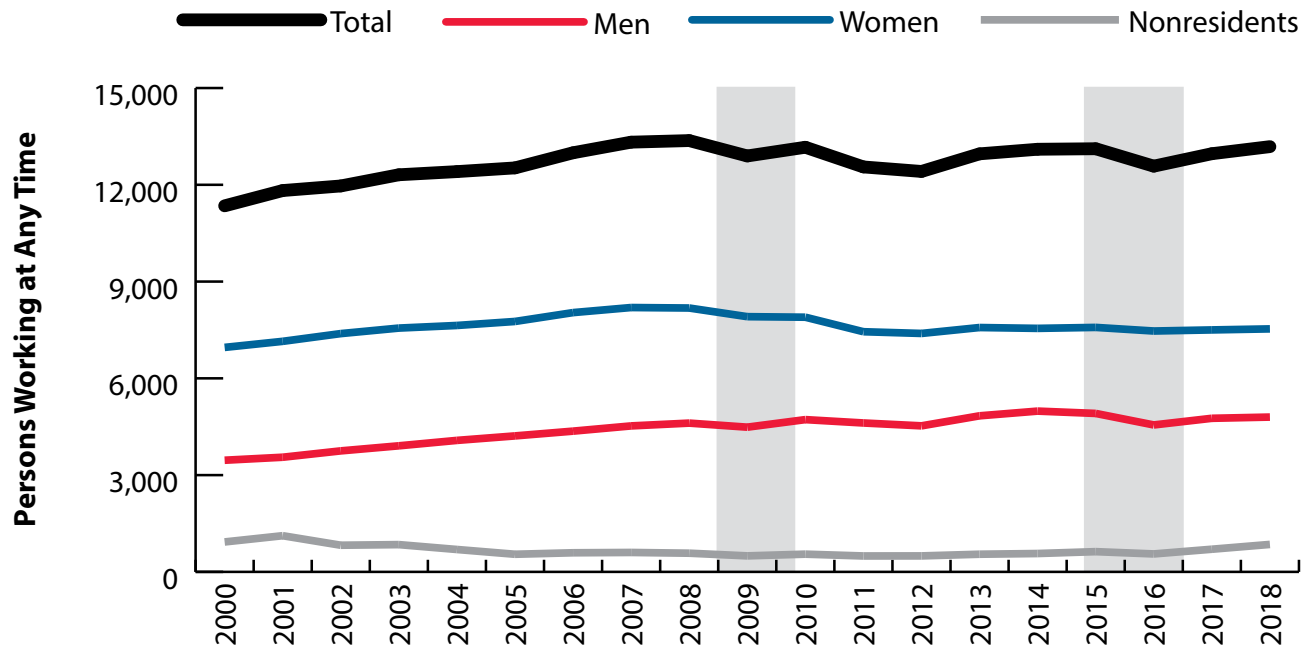


Figure: Persons Working in Financial Activities (NAICS 52-53) in Wyoming at Any Time by Gender, 2000-2018

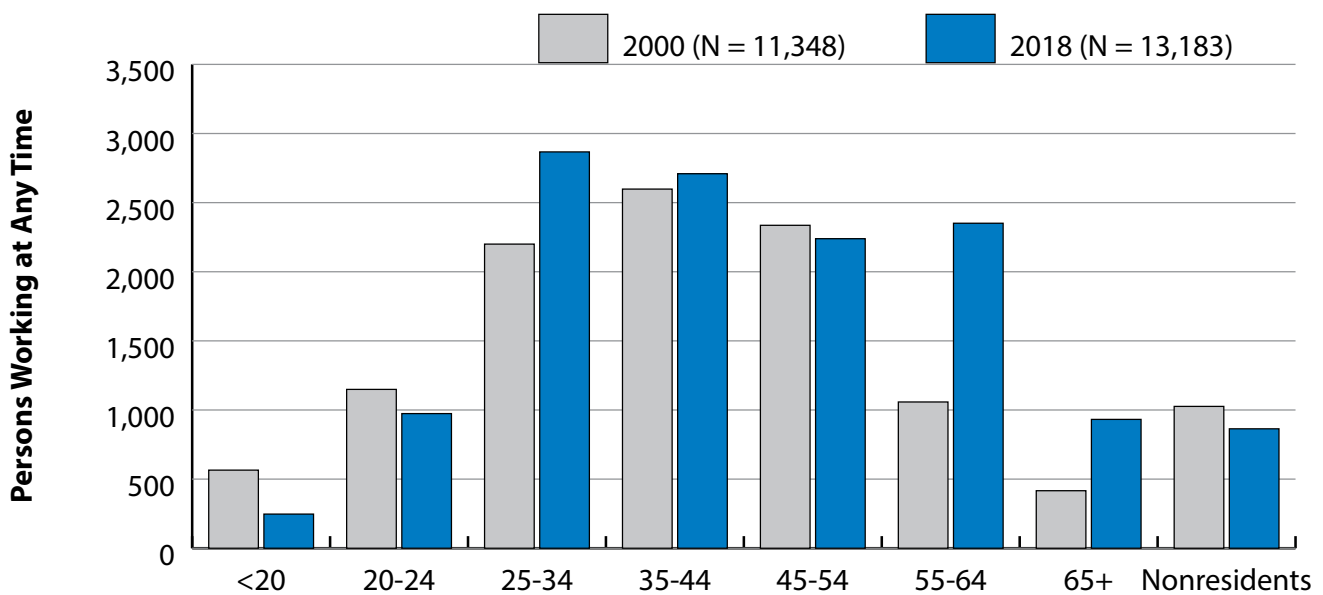


Figure: Persons Working in Financial Activities (NAICS 52-53) in Wyoming at Any Time by Age, 2000-2018

Note: Nonresidents are individuals for whom demographic data are not available.
 Shaded areas indicate periods of economic downturn: 2009Q1-2010Q1 and 2015Q2-2016Q4.
 Source: Demographics of Persons Working in Wyoming by County, Industry, Age, & Gender, 2000-2018. Research & Planning, Wyoming Department of Workforce Services. Prepared by M. Moore, Research & Planning, WY DWS, 7/31/19.

Average Earnings by Age and Gender in the 52 & 53 - Financial Activities Industry in 2000

Gender	Age Group	Number	Age Percent	Gender Percent	Average Annual Wage	Average Quarters Worked	Average Annual Employers
Women	00-19	318	4.6	0.0	\$4,210	2.8	1.8
Women	20-24	823	11.8	0.0	\$10,382	3.3	1.9
Women	25-34	1,500	21.6	0.0	\$17,231	3.5	1.6
Women	35-44	1,868	26.8	0.0	\$21,514	3.6	1.4
Women	45-54	1,543	22.2	0.0	\$23,486	3.7	1.3
Women	55-64	625	9.0	0.0	\$20,066	3.6	1.2
Women	65-Up	199	2.9	0.0	\$10,025	3.2	1.2
Women	N/A	83	1.2	0.0	\$12,769	3.0	1.3
Women	Total	6,959	100.0	61.3	\$18,358	3.5	1.5
Men	00-19	247	7.1	0.0	\$3,729	2.6	1.7
Men	20-24	326	9.4	0.0	\$10,887	3.0	1.8
Men	25-34	700	20.2	0.0	\$26,917	3.3	1.6
Men	35-44	730	21.1	0.0	\$42,916	3.5	1.3
Men	45-54	793	22.9	0.0	\$57,204	3.6	1.2
Men	55-64	433	12.5	0.0	\$54,033	3.5	1.2
Men	65-Up	217	6.3	0.0	\$38,846	3.1	1.2
Men	N/A	15	0.4	0.0	\$33,371	3.1	1.4
Men	Total	3,461	100.0	30.5	\$38,235	3.4	1.4
N/A	N/A	928	100.0	0.0	\$9,100	1.8	1.1
N/A	Total	928	100.0	8.2	\$9,100	1.8	1.1
Total	00-19	565	5.0	0.0	\$4,000	2.7	1.8
Total	20-24	1,149	10.1	0.0	\$10,526	3.2	1.8
Total	25-34	2,200	19.4	0.0	\$20,313	3.4	1.6
Total	35-44	2,598	22.9	0.0	\$27,528	3.6	1.4
Total	45-54	2,336	20.6	0.0	\$34,932	3.6	1.3
Total	55-64	1,058	9.3	0.0	\$33,967	3.6	1.2
Total	65-Up	416	3.7	0.0	\$25,059	3.2	1.2
Total	N/A	1,026	9.0	0.0	\$9,751	1.9	1.1
Total	Total	11,348	100.0	100.0	\$23,663	3.3	1.4

Note: Persons worked any time during the year.

Industry Determination: Based on the industry of employment in which the person made the most money in the year.

N/A: Represents persons with demographic data that are unavailable.

N/A = Nonresidents, individuals for whom demographic data are not available.

Source: Demographics of Persons Working in Wyoming by County, Industry, Age, & Gender, 2000-2018.

Research & Planning, Wyoming Department of Workforce Services.

Prepared by M. Moore, Research & Planning, WY DWS, 7/31/19.

Average Earnings by Age and Gender in the 52 & 53 - Financial Activities Industry in 2001

Gender	Age Group	Number	Age Percent	Gender Percent	Average Annual Wage	Average Quarters Worked	Average Annual Employers
Women	00-19	331	4.6	0.0	\$4,707	2.9	1.9
Women	20-24	870	12.2	0.0	\$10,698	3.2	1.9
Women	25-34	1,526	21.4	0.0	\$18,120	3.5	1.5
Women	35-44	1,834	25.7	0.0	\$22,594	3.6	1.4
Women	45-54	1,648	23.1	0.0	\$24,436	3.6	1.3
Women	55-64	673	9.4	0.0	\$20,347	3.6	1.2
Women	65-Up	200	2.8	0.0	\$11,458	3.3	1.1
Women	N/A	65	0.9	0.0	\$16,755	3.3	1.3
Women	Total	7,147	100.0	60.5	\$19,211	3.5	1.4
Men	00-19	235	6.6	0.0	\$4,389	2.7	1.8
Men	20-24	343	9.7	0.0	\$11,472	3.0	2.0
Men	25-34	730	20.5	0.0	\$28,902	3.3	1.5
Men	35-44	747	21.0	0.0	\$44,388	3.5	1.4
Men	45-54	825	23.2	0.0	\$57,948	3.5	1.2
Men	55-64	436	12.3	0.0	\$59,061	3.5	1.2
Men	65-Up	222	6.2	0.0	\$39,601	3.2	1.1
Men	N/A	16	0.5	0.0	\$28,868	2.8	1.3
Men	Total	3,554	100.0	30.1	\$39,965	3.3	1.4
N/A	N/A	1,121	100.0	0.0	\$9,220	1.6	1.1
N/A	Total	1,121	100.0	9.5	\$9,220	1.6	1.1
Total	00-19	566	4.8	0.0	\$4,575	2.8	1.8
Total	20-24	1,213	10.3	0.0	\$10,917	3.1	1.9
Total	25-34	2,256	19.1	0.0	\$21,609	3.4	1.5
Total	35-44	2,581	21.8	0.0	\$28,901	3.6	1.4
Total	45-54	2,473	20.9	0.0	\$35,616	3.6	1.3
Total	55-64	1,109	9.4	0.0	\$35,567	3.6	1.2
Total	65-Up	422	3.6	0.0	\$26,263	3.2	1.1
Total	N/A	1,202	10.2	0.0	\$9,889	1.7	1.1
Total	Total	11,822	100.0	100.0	\$24,502	3.3	1.4

Note: Persons worked any time during the year.

Industry Determination: Based on the industry of employment in which the person made the most money in the year.

N/A: Represents persons with demographic data that are unavailable.

N/A = Nonresidents, individuals for whom demographic data are not available.

Source: Demographics of Persons Working in Wyoming by County, Industry, Age, & Gender, 2000-2018.

Research & Planning, Wyoming Department of Workforce Services.

Prepared by M. Moore, Research & Planning, WY DWS, 7/31/19.

Average Earnings by Age and Gender in the 52 & 53 - Financial Activities Industry in 2002

Gender	Age Group	Number	Age Percent	Gender Percent	Average Annual Wage	Average Quarters Worked	Average Annual Employers
Women	00-19	349	4.7	0.0	\$4,496	2.9	1.7
Women	20-24	865	11.7	0.0	\$11,604	3.3	1.7
Women	25-34	1,583	21.4	0.0	\$19,519	3.5	1.5
Women	35-44	1,810	24.5	0.0	\$24,035	3.6	1.4
Women	45-54	1,722	23.3	0.0	\$26,020	3.7	1.3
Women	55-64	771	10.4	0.0	\$22,084	3.6	1.2
Women	65-Up	220	3.0	0.0	\$12,598	3.3	1.1
Women	N/A	67	0.9	0.0	\$18,146	3.2	1.3
Women	Total	7,387	100.0	61.7	\$20,554	3.5	1.4
Men	00-19	222	5.9	0.0	\$4,495	2.6	1.7
Men	20-24	426	11.4	0.0	\$12,425	3.1	1.7
Men	25-34	760	20.3	0.0	\$29,298	3.4	1.5
Men	35-44	772	20.6	0.0	\$41,884	3.5	1.4
Men	45-54	844	22.5	0.0	\$57,175	3.5	1.2
Men	55-64	471	12.6	0.0	\$56,183	3.5	1.2
Men	65-Up	239	6.4	0.0	\$42,552	3.2	1.2
Men	N/A	17	0.5	0.0	\$34,313	2.5	1.3
Men	Total	3,751	100.0	31.4	\$39,020	3.4	1.4
N/A	N/A	826	100.0	0.0	\$10,655	1.7	1.1
N/A	Total	826	100.0	6.9	\$10,655	1.7	1.1
Total	00-19	571	4.8	0.0	\$4,496	2.8	1.7
Total	20-24	1,291	10.8	0.0	\$11,875	3.2	1.7
Total	25-34	2,343	19.6	0.0	\$22,691	3.5	1.5
Total	35-44	2,582	21.6	0.0	\$29,372	3.6	1.4
Total	45-54	2,566	21.4	0.0	\$36,267	3.6	1.3
Total	55-64	1,242	10.4	0.0	\$35,015	3.6	1.2
Total	65-Up	459	3.8	0.0	\$28,195	3.3	1.1
Total	N/A	910	7.6	0.0	\$11,649	1.9	1.1
Total	Total	11,964	100.0	100.0	\$25,660	3.4	1.4

Note: Persons worked any time during the year.

Industry Determination: Based on the industry of employment in which the person made the most money in the year.

N/A: Represents persons with demographic data that are unavailable.

N/A = Nonresidents, individuals for whom demographic data are not available.

Source: Demographics of Persons Working in Wyoming by County, Industry, Age, & Gender, 2000-2018.

Research & Planning, Wyoming Department of Workforce Services.

Prepared by M. Moore, Research & Planning, WY DWS, 7/31/19.

Average Earnings by Age and Gender in the 52 & 53 - Financial Activities Industry in 2003

Gender	Age Group	Number	Age Percent	Gender Percent	Average Annual Wage	Average Quarters Worked	Average Annual Employers
Women	00-19	332	4.4	0.0	\$4,938	3.0	1.8
Women	20-24	945	12.5	0.0	\$12,136	3.3	1.8
Women	25-34	1,588	21.0	0.0	\$20,428	3.5	1.5
Women	35-44	1,734	22.9	0.0	\$25,400	3.6	1.4
Women	45-54	1,837	24.3	0.0	\$27,122	3.7	1.3
Women	55-64	827	10.9	0.0	\$23,945	3.6	1.2
Women	65-Up	234	3.1	0.0	\$12,939	3.4	1.2
Women	N/A	61	0.8	0.0	\$17,534	2.9	1.4
Women	Total	7,558	100.0	61.4	\$21,608	3.5	1.4
Men	00-19	229	5.9	0.0	\$4,501	2.5	1.6
Men	20-24	439	11.2	0.0	\$12,372	3.1	1.8
Men	25-34	811	20.8	0.0	\$31,370	3.4	1.5
Men	35-44	789	20.2	0.0	\$43,756	3.5	1.3
Men	45-54	858	22.0	0.0	\$58,323	3.6	1.2
Men	55-64	529	13.5	0.0	\$57,630	3.6	1.2
Men	65-Up	237	6.1	0.0	\$40,527	3.2	1.2
Men	N/A	16	0.4	0.0	\$23,671	2.6	1.4
Men	Total	3,908	100.0	31.7	\$40,158	3.4	1.4
N/A	N/A	845	100.0	0.0	\$9,915	1.7	1.1
N/A	Total	845	100.0	6.9	\$9,915	1.7	1.1
Total	00-19	561	4.6	0.0	\$4,760	2.8	1.7
Total	20-24	1,384	11.2	0.0	\$12,211	3.2	1.8
Total	25-34	2,399	19.5	0.0	\$24,127	3.5	1.5
Total	35-44	2,523	20.5	0.0	\$31,141	3.6	1.3
Total	45-54	2,695	21.9	0.0	\$37,055	3.6	1.3
Total	55-64	1,356	11.0	0.0	\$37,086	3.6	1.2
Total	65-Up	471	3.8	0.0	\$26,821	3.3	1.2
Total	N/A	922	7.5	0.0	\$10,658	1.8	1.1
Total	Total	12,311	100.0	100.0	\$26,694	3.4	1.4

Note: Persons worked any time during the year.

Industry Determination: Based on the industry of employment in which the person made the most money in the year.

N/A: Represents persons with demographic data that are unavailable.

N/A = Nonresidents, individuals for whom demographic data are not available.

Source: Demographics of Persons Working in Wyoming by County, Industry, Age, & Gender, 2000-2018.

Research & Planning, Wyoming Department of Workforce Services.

Prepared by M. Moore, Research & Planning, WY DWS, 7/31/19.

Average Earnings by Age and Gender in the 52 & 53 - Financial Activities Industry in 2004

Gender	Age Group	Number	Age Percent	Gender Percent	Average Annual Wage	Average Quarters Worked	Average Annual Employers
Women	00-19	329	4.3	0.0	\$5,016	3.0	1.8
Women	20-24	952	12.5	0.0	\$12,677	3.3	1.7
Women	25-34	1,650	21.6	0.0	\$20,067	3.5	1.5
Women	35-44	1,665	21.8	0.0	\$26,155	3.6	1.3
Women	45-54	1,854	24.3	0.0	\$28,732	3.7	1.3
Women	55-64	890	11.7	0.0	\$25,196	3.6	1.2
Women	65-Up	256	3.4	0.0	\$13,495	3.3	1.1
Women	N/A	43	0.6	0.0	\$18,748	3.1	1.3
Women	Total	7,639	100.0	61.6	\$22,298	3.5	1.4
Men	00-19	229	5.6	0.0	\$5,006	2.6	1.6
Men	20-24	434	10.6	0.0	\$13,474	3.1	1.9
Men	25-34	892	21.9	0.0	\$31,462	3.4	1.5
Men	35-44	782	19.2	0.0	\$45,456	3.5	1.3
Men	45-54	908	22.3	0.0	\$58,548	3.5	1.2
Men	55-64	572	14.0	0.0	\$61,342	3.6	1.2
Men	65-Up	243	6.0	0.0	\$40,139	3.3	1.2
Men	N/A	16	0.4	0.0	\$28,958	3.1	1.8
Men	Total	4,076	100.0	32.8	\$41,480	3.4	1.4
N/A	N/A	694	100.0	0.0	\$10,810	1.8	1.1
N/A	Total	694	100.0	5.6	\$10,810	1.8	1.1
Total	00-19	558	4.5	0.0	\$5,012	2.8	1.7
Total	20-24	1,386	11.2	0.0	\$12,926	3.2	1.8
Total	25-34	2,542	20.5	0.0	\$24,066	3.5	1.5
Total	35-44	2,447	19.7	0.0	\$32,323	3.6	1.3
Total	45-54	2,762	22.3	0.0	\$38,534	3.6	1.2
Total	55-64	1,462	11.8	0.0	\$39,338	3.6	1.2
Total	65-Up	499	4.0	0.0	\$26,470	3.3	1.2
Total	N/A	753	6.1	0.0	\$11,649	1.9	1.1
Total	Total	12,409	100.0	100.0	\$27,956	3.4	1.4

Note: Persons worked any time during the year.

Industry Determination: Based on the industry of employment in which the person made the most money in the year.

N/A: Represents persons with demographic data that are unavailable.

N/A = Nonresidents, individuals for whom demographic data are not available.

Source: Demographics of Persons Working in Wyoming by County, Industry, Age, & Gender, 2000-2018.

Research & Planning, Wyoming Department of Workforce Services.

Prepared by M. Moore, Research & Planning, WY DWS, 7/31/19.

Average Earnings by Age and Gender in the 52 & 53 - Financial Activities Industry in 2005

Gender	Age Group	Number	Age Percent	Gender Percent	Average Annual Wage	Average Quarters Worked	Average Annual Employers
Women	00-19	325	4.2	0.0	\$5,262	2.9	1.9
Women	20-24	931	12.0	0.0	\$13,050	3.3	1.8
Women	25-34	1,697	21.9	0.0	\$21,140	3.5	1.5
Women	35-44	1,619	20.9	0.0	\$27,643	3.6	1.4
Women	45-54	1,940	25.0	0.0	\$29,939	3.7	1.3
Women	55-64	949	12.2	0.0	\$26,873	3.7	1.2
Women	65-Up	274	3.5	0.0	\$13,470	3.3	1.1
Women	N/A	28	0.4	0.0	\$21,271	3.4	1.2
Women	Total	7,763	100.0	62.0	\$23,491	3.5	1.4
Men	00-19	245	5.8	0.0	\$5,419	2.7	1.7
Men	20-24	458	10.9	0.0	\$15,948	3.1	1.8
Men	25-34	892	21.2	0.0	\$35,972	3.5	1.6
Men	35-44	823	19.5	0.0	\$49,833	3.5	1.4
Men	45-54	910	21.6	0.0	\$58,774	3.6	1.3
Men	55-64	623	14.8	0.0	\$61,899	3.6	1.2
Men	65-Up	254	6.0	0.0	\$46,356	3.2	1.2
Men	N/A	10	0.2	0.0	\$53,869	3.5	1.9
Men	Total	4,215	100.0	33.7	\$44,150	3.4	1.4
N/A	N/A	546	100.0	0.0	\$12,769	2.1	1.1
N/A	Total	546	100.0	4.4	\$12,769	2.1	1.1
Total	00-19	570	4.6	0.0	\$5,330	2.8	1.8
Total	20-24	1,389	11.1	0.0	\$14,005	3.2	1.8
Total	25-34	2,589	20.7	0.0	\$26,250	3.5	1.5
Total	35-44	2,442	19.5	0.0	\$35,121	3.6	1.4
Total	45-54	2,850	22.8	0.0	\$39,146	3.7	1.3
Total	55-64	1,572	12.6	0.0	\$40,754	3.6	1.2
Total	65-Up	528	4.2	0.0	\$29,290	3.3	1.1
Total	N/A	584	4.7	0.0	\$13,881	2.2	1.1
Total	Total	12,524	100.0	100.0	\$29,976	3.4	1.4

Note: Persons worked any time during the year.

Industry Determination: Based on the industry of employment in which the person made the most money in the year.

N/A: Represents persons with demographic data that are unavailable.

N/A = Nonresidents, individuals for whom demographic data are not available.

Source: Demographics of Persons Working in Wyoming by County, Industry, Age, & Gender, 2000-2018.

Research & Planning, Wyoming Department of Workforce Services.

Prepared by M. Moore, Research & Planning, WY DWS, 7/31/19.

Average Earnings by Age and Gender in the 52 & 53 - Financial Activities Industry in 2006

Gender	Age Group	Number	Age Percent	Gender Percent	Average Annual Wage	Average Quarters Worked	Average Annual Employers
Women	00-19	325	4.0	0.0	\$5,245	3.0	1.9
Women	20-24	930	11.6	0.0	\$13,636	3.3	1.9
Women	25-34	1,762	21.9	0.0	\$22,635	3.5	1.6
Women	35-44	1,588	19.8	0.0	\$29,484	3.7	1.4
Women	45-54	2,063	25.7	0.0	\$31,534	3.7	1.3
Women	55-64	1,053	13.1	0.0	\$28,009	3.7	1.2
Women	65-Up	292	3.6	0.0	\$14,410	3.3	1.2
Women	N/A	25	0.3	0.0	\$15,678	2.8	1.4
Women	Total	8,038	100.0	61.9	\$24,911	3.6	1.5
Men	00-19	236	5.4	0.0	\$6,515	2.7	1.6
Men	20-24	462	10.6	0.0	\$18,958	3.1	1.8
Men	25-34	956	21.9	0.0	\$40,534	3.5	1.5
Men	35-44	841	19.3	0.0	\$55,402	3.5	1.3
Men	45-54	900	20.6	0.0	\$66,977	3.6	1.3
Men	55-64	687	15.7	0.0	\$61,957	3.6	1.2
Men	65-Up	273	6.3	0.0	\$53,357	3.3	1.2
Men	N/A	8	0.2	0.0	\$53,736	3.0	1.4
Men	Total	4,363	100.0	33.6	\$48,929	3.4	1.4
N/A	N/A	592	100.0	0.0	\$13,915	2.1	1.2
N/A	Total	592	100.0	4.6	\$13,915	2.1	1.2
Total	00-19	561	4.3	0.0	\$5,780	2.9	1.8
Total	20-24	1,392	10.7	0.0	\$15,403	3.2	1.8
Total	25-34	2,718	20.9	0.0	\$28,931	3.5	1.5
Total	35-44	2,429	18.7	0.0	\$38,457	3.6	1.4
Total	45-54	2,963	22.8	0.0	\$42,299	3.7	1.3
Total	55-64	1,740	13.4	0.0	\$41,412	3.6	1.2
Total	65-Up	565	4.3	0.0	\$33,228	3.3	1.2
Total	N/A	625	4.8	0.0	\$14,495	2.1	1.2
Total	Total	12,993	100.0	100.0	\$32,475	3.4	1.4

Note: Persons worked any time during the year.

Industry Determination: Based on the industry of employment in which the person made the most money in the year.

N/A: Represents persons with demographic data that are unavailable.

N/A = Nonresidents, individuals for whom demographic data are not available.

Source: Demographics of Persons Working in Wyoming by County, Industry, Age, & Gender, 2000-2018.

Research & Planning, Wyoming Department of Workforce Services.

Prepared by M. Moore, Research & Planning, WY DWS, 7/31/19.

Average Earnings by Age and Gender in the 52 & 53 - Financial Activities Industry in 2007

Gender	Age Group	Number	Age Percent	Gender Percent	Average Annual Wage	Average Quarters Worked	Average Annual Employers
Women	00-19	312	3.8	0.0	\$5,696	3.0	2.0
Women	20-24	1,025	12.5	0.0	\$14,535	3.2	1.8
Women	25-34	1,836	22.4	0.0	\$24,108	3.5	1.5
Women	35-44	1,562	19.1	0.0	\$30,991	3.6	1.4
Women	45-54	2,024	24.7	0.0	\$34,722	3.7	1.3
Women	55-64	1,128	13.8	0.0	\$30,740	3.6	1.2
Women	65-Up	292	3.6	0.0	\$16,060	3.4	1.2
Women	N/A	16	0.2	0.0	\$16,295	3.2	1.3
Women	Total	8,195	100.0	61.5	\$26,754	3.5	1.5
Men	00-19	246	5.4	0.0	\$6,791	2.7	1.7
Men	20-24	442	9.8	0.0	\$20,989	3.2	1.9
Men	25-34	1,045	23.1	0.0	\$41,440	3.4	1.5
Men	35-44	854	18.9	0.0	\$59,273	3.5	1.4
Men	45-54	930	20.6	0.0	\$70,907	3.5	1.2
Men	55-64	729	16.1	0.0	\$68,630	3.5	1.2
Men	65-Up	274	6.1	0.0	\$56,107	3.3	1.2
Men	N/A	5	0.1	0.0	\$71,853	3.6	1.2
Men	Total	4,525	100.0	34.0	\$52,283	3.4	1.4
N/A	N/A	602	100.0	0.0	\$19,451	2.2	1.2
N/A	Total	602	100.0	4.5	\$19,451	2.2	1.2
Total	00-19	558	4.2	0.0	\$6,179	2.8	1.8
Total	20-24	1,467	11.0	0.0	\$16,480	3.2	1.8
Total	25-34	2,881	21.6	0.0	\$30,394	3.5	1.5
Total	35-44	2,416	18.1	0.0	\$40,988	3.6	1.4
Total	45-54	2,954	22.2	0.0	\$46,114	3.6	1.3
Total	55-64	1,857	13.9	0.0	\$45,614	3.6	1.2
Total	65-Up	566	4.2	0.0	\$35,447	3.4	1.2
Total	N/A	623	4.7	0.0	\$19,791	2.2	1.2
Total	Total	13,322	100.0	100.0	\$35,095	3.4	1.4

Note: Persons worked any time during the year.

Industry Determination: Based on the industry of employment in which the person made the most money in the year.

N/A: Represents persons with demographic data that are unavailable.

N/A = Nonresidents, individuals for whom demographic data are not available.

Source: Demographics of Persons Working in Wyoming by County, Industry, Age, & Gender, 2000-2018.

Research & Planning, Wyoming Department of Workforce Services.

Prepared by M. Moore, Research & Planning, WY DWS, 7/31/19.

Average Earnings by Age and Gender in the 52 & 53 - Financial Activities Industry in 2008

Gender	Age Group	Number	Age Percent	Gender Percent	Average Annual Wage	Average Quarters Worked	Average Annual Employers
Women	00-19	273	3.3	0.0	\$6,240	3.0	1.8
Women	20-24	1,003	12.3	0.0	\$16,249	3.4	1.8
Women	25-34	1,879	23.0	0.0	\$25,533	3.5	1.5
Women	35-44	1,539	18.8	0.0	\$33,052	3.7	1.4
Women	45-54	1,962	24.0	0.0	\$35,980	3.7	1.3
Women	55-64	1,178	14.4	0.0	\$36,437	3.7	1.2
Women	65-Up	329	4.0	0.0	\$19,409	3.5	1.2
Women	N/A	17	0.2	0.0	\$21,829	3.1	1.3
Women	Total	8,180	100.0	61.2	\$28,988	3.6	1.4
Men	00-19	223	4.8	0.0	\$5,643	2.7	1.6
Men	20-24	439	9.5	0.0	\$21,992	3.2	1.8
Men	25-34	1,118	24.2	0.0	\$42,999	3.5	1.5
Men	35-44	864	18.7	0.0	\$67,095	3.6	1.4
Men	45-54	941	20.4	0.0	\$79,659	3.6	1.3
Men	55-64	745	16.2	0.0	\$69,969	3.6	1.2
Men	65-Up	279	6.0	0.0	\$65,323	3.3	1.2
Men	N/A	3	0.1	0.0	\$13,358	2.7	1.3
Men	Total	4,612	100.0	34.5	\$56,875	3.5	1.4
N/A	N/A	579	100.0	0.0	\$18,419	2.3	1.2
N/A	Total	579	100.0	4.3	\$18,419	2.3	1.2
Total	00-19	496	3.7	0.0	\$5,971	2.9	1.8
Total	20-24	1,442	10.8	0.0	\$17,998	3.3	1.8
Total	25-34	2,997	22.4	0.0	\$32,049	3.5	1.5
Total	35-44	2,403	18.0	0.0	\$45,292	3.6	1.4
Total	45-54	2,903	21.7	0.0	\$50,139	3.7	1.3
Total	55-64	1,923	14.4	0.0	\$49,428	3.7	1.2
Total	65-Up	608	4.5	0.0	\$40,478	3.4	1.2
Total	N/A	599	4.5	0.0	\$18,490	2.3	1.2
Total	Total	13,371	100.0	100.0	\$38,149	3.5	1.4

Note: Persons worked any time during the year.

Industry Determination: Based on the industry of employment in which the person made the most money in the year.

N/A: Represents persons with demographic data that are unavailable.

N/A = Nonresidents, individuals for whom demographic data are not available.

Source: Demographics of Persons Working in Wyoming by County, Industry, Age, & Gender, 2000-2018.

Research & Planning, Wyoming Department of Workforce Services.

Prepared by M. Moore, Research & Planning, WY DWS, 7/31/19.

Average Earnings by Age and Gender in the 52 & 53 - Financial Activities Industry in 2009

Gender	Age Group	Number	Age Percent	Gender Percent	Average Annual Wage	Average Quarters Worked	Average Annual Employers
Women	00-19	220	2.8	0.0	\$5,923	3.0	1.6
Women	20-24	843	10.7	0.0	\$16,471	3.3	1.6
Women	25-34	1,854	23.4	0.0	\$25,515	3.6	1.4
Women	35-44	1,480	18.7	0.0	\$33,445	3.7	1.3
Women	45-54	1,888	23.9	0.0	\$36,143	3.7	1.2
Women	55-64	1,266	16.0	0.0	\$33,766	3.7	1.2
Women	65-Up	347	4.4	0.0	\$18,794	3.4	1.1
Women	N/A	14	0.2	0.0	\$24,198	3.1	1.2
Women	Total	7,912	100.0	61.4	\$29,049	3.6	1.3
Men	00-19	182	4.1	0.0	\$4,998	2.5	1.4
Men	20-24	396	8.8	0.0	\$19,882	3.2	1.6
Men	25-34	1,106	24.7	0.0	\$40,522	3.5	1.4
Men	35-44	866	19.3	0.0	\$60,079	3.5	1.3
Men	45-54	884	19.7	0.0	\$66,023	3.5	1.2
Men	55-64	753	16.8	0.0	\$68,251	3.6	1.2
Men	65-Up	295	6.6	0.0	\$49,643	3.3	1.2
Men	N/A	4	0.1	0.0	\$73,426	3.3	1.8
Men	Total	4,486	100.0	34.8	\$51,343	3.4	1.3
N/A	N/A	496	100.0	0.0	\$19,856	2.3	1.1
N/A	Total	496	100.0	3.8	\$19,856	2.3	1.1
Total	00-19	402	3.1	0.0	\$5,504	2.8	1.5
Total	20-24	1,239	9.6	0.0	\$17,561	3.3	1.6
Total	25-34	2,960	23.0	0.0	\$31,122	3.5	1.4
Total	35-44	2,346	18.2	0.0	\$43,277	3.6	1.3
Total	45-54	2,772	21.5	0.0	\$45,672	3.7	1.2
Total	55-64	2,019	15.7	0.0	\$46,628	3.7	1.2
Total	65-Up	642	5.0	0.0	\$32,969	3.4	1.1
Total	N/A	514	4.0	0.0	\$20,392	2.3	1.1
Total	Total	12,894	100.0	100.0	\$36,452	3.5	1.3

Note: Persons worked any time during the year.

Industry Determination: Based on the industry of employment in which the person made the most money in the year.

N/A: Represents persons with demographic data that are unavailable.

N/A = Nonresidents, individuals for whom demographic data are not available.

Source: Demographics of Persons Working in Wyoming by County, Industry, Age, & Gender, 2000-2018.

Research & Planning, Wyoming Department of Workforce Services.

Prepared by M. Moore, Research & Planning, WY DWS, 7/31/19.

Average Earnings by Age and Gender in the 52 & 53 - Financial Activities Industry in 2010

Gender	Age Group	Number	Age Percent	Gender Percent	Average Annual Wage	Average Quarters Worked	Average Annual Employers
Women	00-19	157	2.0	0.0	\$5,320	2.9	1.6
Women	20-24	749	9.5	0.0	\$15,762	3.3	1.6
Women	25-34	1,866	23.6	0.0	\$24,351	3.4	1.4
Women	35-44	1,504	19.1	0.0	\$32,354	3.6	1.3
Women	45-54	1,871	23.7	0.0	\$34,412	3.6	1.2
Women	55-64	1,360	17.2	0.0	\$33,346	3.6	1.2
Women	65-Up	368	4.7	0.0	\$16,422	3.1	1.1
Women	N/A	20	0.3	0.0	\$12,696	2.0	1.1
Women	Total	7,895	100.0	60.0	\$28,217	3.5	1.3
Men	00-19	143	3.0	0.0	\$4,749	2.4	1.4
Men	20-24	401	8.5	0.0	\$17,819	2.9	1.6
Men	25-34	1,210	25.6	0.0	\$38,399	3.3	1.3
Men	35-44	913	19.3	0.0	\$57,506	3.4	1.3
Men	45-54	909	19.3	0.0	\$68,264	3.5	1.2
Men	55-64	815	17.3	0.0	\$69,580	3.5	1.1
Men	65-Up	325	6.9	0.0	\$48,333	3.2	1.2
Men	N/A	4	0.1	0.0	\$38,142	2.8	1.0
Men	Total	4,720	100.0	35.9	\$51,146	3.3	1.3
N/A	N/A	549	100.0	0.0	\$17,127	2.1	1.1
N/A	Total	549	100.0	4.2	\$17,127	2.1	1.1
Total	00-19	300	2.3	0.0	\$5,048	2.7	1.5
Total	20-24	1,150	8.7	0.0	\$16,479	3.2	1.6
Total	25-34	3,076	23.4	0.0	\$29,877	3.4	1.4
Total	35-44	2,417	18.4	0.0	\$41,855	3.5	1.3
Total	45-54	2,780	21.1	0.0	\$45,481	3.5	1.2
Total	55-64	2,175	16.5	0.0	\$46,923	3.5	1.2
Total	65-Up	693	5.3	0.0	\$31,387	3.1	1.1
Total	N/A	573	4.4	0.0	\$17,119	2.1	1.1
Total	Total	13,164	100.0	100.0	\$35,976	3.4	1.3

Note: Persons worked any time during the year.

Industry Determination: Based on the industry of employment in which the person made the most money in the year.

N/A: Represents persons with demographic data that are unavailable.

N/A = Nonresidents, individuals for whom demographic data are not available.

Source: Demographics of Persons Working in Wyoming by County, Industry, Age, & Gender, 2000-2018.

Research & Planning, Wyoming Department of Workforce Services.

Prepared by M. Moore, Research & Planning, WY DWS, 7/31/19.

Average Earnings by Age and Gender in the 52 & 53 - Financial Activities Industry in 2011

Gender	Age Group	Number	Age Percent	Gender Percent	Average Annual Wage	Average Quarters Worked	Average Annual Employers
Women	00-19	144	1.9	0.0	\$5,438	2.7	1.5
Women	20-24	711	9.6	0.0	\$15,222	3.3	1.6
Women	25-34	1,799	24.2	0.0	\$26,145	3.5	1.4
Women	35-44	1,419	19.1	0.0	\$34,247	3.6	1.3
Women	45-54	1,693	22.7	0.0	\$37,213	3.7	1.3
Women	55-64	1,326	17.8	0.0	\$36,797	3.7	1.2
Women	65-Up	344	4.6	0.0	\$20,507	3.4	1.1
Women	N/A	9	0.1	0.0	\$25,381	3.2	1.2
Women	Total	7,445	100.0	59.3	\$30,398	3.6	1.3
Men	00-19	143	3.1	0.0	\$5,922	2.7	1.6
Men	20-24	395	8.6	0.0	\$18,882	3.0	1.6
Men	25-34	1,169	25.3	0.0	\$40,968	3.4	1.4
Men	35-44	888	19.2	0.0	\$63,470	3.5	1.3
Men	45-54	868	18.8	0.0	\$72,118	3.6	1.2
Men	55-64	809	17.5	0.0	\$74,366	3.5	1.1
Men	65-Up	341	7.4	0.0	\$51,253	3.3	1.2
Men	N/A	3	0.1	0.0	\$45,229	2.7	2.3
Men	Total	4,616	100.0	36.8	\$54,794	3.4	1.3
N/A	N/A	493	100.0	0.0	\$22,614	2.3	1.1
N/A	Total	493	100.0	3.9	\$22,614	2.3	1.1
Total	00-19	287	2.3	0.0	\$5,679	2.7	1.5
Total	20-24	1,106	8.8	0.0	\$16,529	3.2	1.6
Total	25-34	2,968	23.6	0.0	\$31,984	3.5	1.4
Total	35-44	2,307	18.4	0.0	\$45,495	3.6	1.3
Total	45-54	2,561	20.4	0.0	\$49,044	3.7	1.2
Total	55-64	2,135	17.0	0.0	\$51,033	3.6	1.2
Total	65-Up	685	5.5	0.0	\$35,812	3.4	1.1
Total	N/A	505	4.0	0.0	\$22,798	2.3	1.1
Total	Total	12,554	100.0	100.0	\$39,063	3.5	1.3

Note: Persons worked any time during the year.

Industry Determination: Based on the industry of employment in which the person made the most money in the year.

N/A: Represents persons with demographic data that are unavailable.

N/A = Nonresidents, individuals for whom demographic data are not available.

Source: Demographics of Persons Working in Wyoming by County, Industry, Age, & Gender, 2000-2018.

Research & Planning, Wyoming Department of Workforce Services.

Prepared by M. Moore, Research & Planning, WY DWS, 7/31/19.

Average Earnings by Age and Gender in the 52 & 53 - Financial Activities Industry in 2012

Gender	Age Group	Number	Age Percent	Gender Percent	Average Annual Wage	Average Quarters Worked	Average Annual Employers
Women	00-19	144	1.9	0.0	\$6,951	2.9	1.6
Women	20-24	669	9.1	0.0	\$16,784	3.4	1.7
Women	25-34	1,781	24.1	0.0	\$27,192	3.5	1.4
Women	35-44	1,426	19.3	0.0	\$36,896	3.7	1.4
Women	45-54	1,618	21.9	0.0	\$39,013	3.7	1.2
Women	55-64	1,380	18.7	0.0	\$38,513	3.7	1.2
Women	65-Up	365	4.9	0.0	\$21,897	3.5	1.1
Women	N/A	9	0.1	0.0	\$22,952	3.3	1.2
Women	Total	7,392	100.0	59.5	\$32,162	3.6	1.3
Men	00-19	145	3.2	0.0	\$5,375	2.4	1.4
Men	20-24	396	8.7	0.0	\$20,851	3.2	1.7
Men	25-34	1,104	24.4	0.0	\$43,742	3.5	1.4
Men	35-44	868	19.2	0.0	\$69,827	3.6	1.3
Men	45-54	847	18.7	0.0	\$71,905	3.6	1.2
Men	55-64	787	17.4	0.0	\$84,926	3.6	1.1
Men	65-Up	379	8.4	0.0	\$58,984	3.3	1.2
Men	N/A						
Men	Total	4,527	100.0	36.5	\$59,227	3.5	1.3
N/A	N/A	495	100.0	0.0	\$21,414	2.3	1.2
N/A	Total	495	100.0	4.0	\$21,414	2.3	1.2
Total	00-19	289	2.3	0.0	\$6,160	2.7	1.5
Total	20-24	1,065	8.6	0.0	\$18,296	3.3	1.7
Total	25-34	2,885	23.2	0.0	\$33,525	3.5	1.4
Total	35-44	2,294	18.5	0.0	\$49,356	3.6	1.3
Total	45-54	2,465	19.9	0.0	\$50,315	3.7	1.2
Total	55-64	2,167	17.5	0.0	\$55,369	3.7	1.2
Total	65-Up	744	6.0	0.0	\$40,790	3.4	1.2
Total	N/A	505	4.1	0.0	\$21,580	2.3	1.2
Total	Total	12,414	100.0	100.0	\$41,603	3.5	1.3

Note: Persons worked any time during the year.

Industry Determination: Based on the industry of employment in which the person made the most money in the year.

N/A: Represents persons with demographic data that are unavailable.

N/A = Nonresidents, individuals for whom demographic data are not available.

Source: Demographics of Persons Working in Wyoming by County, Industry, Age, & Gender, 2000-2018.

Research & Planning, Wyoming Department of Workforce Services.

Prepared by M. Moore, Research & Planning, WY DWS, 7/31/19.

Average Earnings by Age and Gender in the 52 & 53 - Financial Activities Industry in 2013

Gender	Age Group	Number	Age Percent	Gender Percent	Average Annual Wage	Average Quarters Worked	Average Annual Employers
Women	00-19	154	2.0	0.0	\$7,313	3.0	1.7
Women	20-24	734	9.7	0.0	\$16,886	3.4	1.7
Women	25-34	1,815	24.0	0.0	\$27,934	3.6	1.4
Women	35-44	1,420	18.7	0.0	\$37,213	3.7	1.4
Women	45-54	1,586	20.9	0.0	\$40,598	3.7	1.3
Women	55-64	1,461	19.3	0.0	\$39,688	3.7	1.2
Women	65-Up	395	5.2	0.0	\$25,288	3.5	1.1
Women	N/A	10	0.1	0.0	\$26,129	3.2	1.4
Women	Total	7,575	100.0	58.4	\$32,962	3.6	1.4
Men	00-19	139	2.9	0.0	\$8,506	2.6	1.6
Men	20-24	420	8.7	0.0	\$24,872	3.2	1.6
Men	25-34	1,217	25.2	0.0	\$46,436	3.5	1.4
Men	35-44	993	20.5	0.0	\$67,021	3.6	1.3
Men	45-54	845	17.5	0.0	\$76,526	3.6	1.3
Men	55-64	834	17.2	0.0	\$82,889	3.6	1.1
Men	65-Up	387	8.0	0.0	\$60,822	3.3	1.2
Men	N/A	3	0.1	0.0	\$78,158	3.7	1.0
Men	Total	4,838	100.0	37.3	\$60,409	3.5	1.3
N/A	N/A	547	100.0	0.0	\$21,878	2.3	1.1
N/A	Total	547	100.0	4.2	\$21,878	2.3	1.1
Total	00-19	293	2.3	0.0	\$7,879	2.8	1.7
Total	20-24	1,154	8.9	0.0	\$19,792	3.3	1.7
Total	25-34	3,032	23.4	0.0	\$35,360	3.5	1.4
Total	35-44	2,413	18.6	0.0	\$49,480	3.6	1.3
Total	45-54	2,431	18.8	0.0	\$53,086	3.7	1.3
Total	55-64	2,295	17.7	0.0	\$55,387	3.7	1.2
Total	65-Up	782	6.0	0.0	\$42,873	3.4	1.2
Total	N/A	560	4.3	0.0	\$22,256	2.3	1.1
Total	Total	12,960	100.0	100.0	\$42,740	3.5	1.3

Note: Persons worked any time during the year.

Industry Determination: Based on the industry of employment in which the person made the most money in the year.

N/A: Represents persons with demographic data that are unavailable.

N/A = Nonresidents, individuals for whom demographic data are not available.

Source: Demographics of Persons Working in Wyoming by County, Industry, Age, & Gender, 2000-2018.

Research & Planning, Wyoming Department of Workforce Services.

Prepared by M. Moore, Research & Planning, WY DWS, 7/31/19.

Average Earnings by Age and Gender in the 52 & 53 - Financial Activities Industry in 2014

Gender	Age Group	Number	Age Percent	Gender Percent	Average Annual Wage	Average Quarters Worked	Average Annual Employers
Women	00-19	123	1.6	0.0	\$6,962	3.0	1.8
Women	20-24	738	9.8	0.0	\$17,669	3.3	1.7
Women	25-34	1,787	23.7	0.0	\$28,743	3.6	1.4
Women	35-44	1,456	19.3	0.0	\$37,760	3.7	1.3
Women	45-54	1,514	20.1	0.0	\$41,133	3.7	1.3
Women	55-64	1,473	19.5	0.0	\$41,502	3.7	1.2
Women	65-Up	448	5.9	0.0	\$27,356	3.5	1.1
Women	N/A	10	0.1	0.0	\$29,667	3.4	1.3
Women	Total	7,549	100.0	57.6	\$33,938	3.6	1.4
Men	00-19	146	2.9	0.0	\$8,563	2.8	1.6
Men	20-24	432	8.7	0.0	\$23,926	3.1	1.6
Men	25-34	1,236	24.8	0.0	\$48,059	3.5	1.4
Men	35-44	1,081	21.7	0.0	\$70,620	3.6	1.3
Men	45-54	844	16.9	0.0	\$77,891	3.6	1.3
Men	55-64	841	16.9	0.0	\$85,316	3.6	1.1
Men	65-Up	401	8.0	0.0	\$62,814	3.4	1.1
Men	N/A	3	0.1	0.0	\$49,104	3.3	1.0
Men	Total	4,984	100.0	38.0	\$62,230	3.5	1.3
N/A	N/A	569	100.0	0.0	\$24,312	2.3	1.1
N/A	Total	569	100.0	4.3	\$24,312	2.3	1.1
Total	00-19	269	2.1	0.0	\$7,831	2.9	1.7
Total	20-24	1,170	8.9	0.0	\$19,979	3.3	1.7
Total	25-34	3,023	23.1	0.0	\$36,641	3.6	1.4
Total	35-44	2,537	19.4	0.0	\$51,761	3.6	1.3
Total	45-54	2,358	18.0	0.0	\$54,290	3.6	1.3
Total	55-64	2,314	17.7	0.0	\$57,426	3.7	1.2
Total	65-Up	849	6.5	0.0	\$44,103	3.5	1.1
Total	N/A	582	4.4	0.0	\$24,532	2.3	1.1
Total	Total	13,102	100.0	100.0	\$44,282	3.5	1.3

Note: Persons worked any time during the year.

Industry Determination: Based on the industry of employment in which the person made the most money in the year.

N/A: Represents persons with demographic data that are unavailable.

N/A = Nonresidents, individuals for whom demographic data are not available.

Source: Demographics of Persons Working in Wyoming by County, Industry, Age, & Gender, 2000-2018.

Research & Planning, Wyoming Department of Workforce Services.

Prepared by M. Moore, Research & Planning, WY DWS, 7/31/19.

Average Earnings by Age and Gender in the 52 & 53 - Financial Activities Industry in 2015

Gender	Age Group	Number	Age Percent	Gender Percent	Average Annual Wage	Average Quarters Worked	Average Annual Employers
Women	00-19	149	2.0	0.0	\$7,237	2.8	1.7
Women	20-24	694	9.2	0.0	\$18,721	3.4	1.8
Women	25-34	1,807	23.8	0.0	\$29,740	3.6	1.4
Women	35-44	1,495	19.7	0.0	\$39,993	3.7	1.4
Women	45-54	1,485	19.6	0.0	\$42,947	3.7	1.3
Women	55-64	1,474	19.4	0.0	\$42,303	3.7	1.2
Women	65-Up	462	6.1	0.0	\$28,676	3.5	1.1
Women	N/A	13	0.2	0.0	\$30,268	3.2	1.2
Women	Total	7,579	100.0	57.8	\$35,278	3.6	1.4
Men	00-19	125	2.5	0.0	\$6,426	2.6	1.4
Men	20-24	407	8.3	0.0	\$22,452	3.3	1.8
Men	25-34	1,203	24.5	0.0	\$47,483	3.5	1.5
Men	35-44	1,049	21.4	0.0	\$72,707	3.6	1.3
Men	45-54	860	17.5	0.0	\$75,594	3.5	1.3
Men	55-64	862	17.5	0.0	\$85,881	3.5	1.1
Men	65-Up	404	8.2	0.0	\$59,387	3.3	1.1
Men	N/A	3	0.0	0.0	\$57,738	4.0	1.5
Men	Total	4,912	100.0	37.4	\$62,394	3.5	1.3
N/A	N/A	627	100.0	0.0	\$20,792	2.3	1.2
N/A	Total	627	100.0	4.8	\$20,792	2.3	1.2
Total	00-19	274	2.1	0.0	\$6,867	2.7	1.6
Total	20-24	1,101	8.4	0.0	\$20,100	3.4	1.8
Total	25-34	3,010	22.9	0.0	\$36,831	3.5	1.4
Total	35-44	2,544	19.4	0.0	\$53,482	3.6	1.3
Total	45-54	2,345	17.9	0.0	\$54,920	3.7	1.3
Total	55-64	2,336	17.8	0.0	\$58,383	3.6	1.2
Total	65-Up	866	6.6	0.0	\$43,003	3.4	1.1
Total	N/A	642	4.9	0.0	\$21,099	2.3	1.2
Total	Total	13,118	100.0	100.0	\$44,739	3.5	1.3

Note: Persons worked any time during the year.

Industry Determination: Based on the industry of employment in which the person made the most money in the year.

N/A: Represents persons with demographic data that are unavailable.

N/A = Nonresidents, individuals for whom demographic data are not available.

Source: Demographics of Persons Working in Wyoming by County, Industry, Age, & Gender, 2000-2018.

Research & Planning, Wyoming Department of Workforce Services.

Prepared by M. Moore, Research & Planning, WY DWS, 7/31/19.

Average Earnings by Age and Gender in the 52 & 53 - Financial Activities Industry in 2016

Gender	Age Group	Number	Age Percent	Gender Percent	Average Annual Wage	Average Quarters Worked	Average Annual Employers
Women	00-19	136	1.8	0.0	\$6,917	2.8	1.5
Women	20-24	648	8.7	0.0	\$19,933	3.4	1.6
Women	25-34	1,803	24.1	0.0	\$30,100	3.6	1.4
Women	35-44	1,458	19.5	0.0	\$41,987	3.7	1.3
Women	45-54	1,469	19.7	0.0	\$44,535	3.7	1.2
Women	55-64	1,474	19.7	0.0	\$43,287	3.7	1.2
Women	65-Up	464	6.2	0.0	\$30,570	3.6	1.1
Women	N/A	15	0.2	0.0	\$27,630	3.1	1.4
Women	Total	7,467	100.0	59.4	\$36,584	3.6	1.3
Men	00-19	125	2.7	0.0	\$5,382	2.5	1.4
Men	20-24	376	8.3	0.0	\$20,254	3.2	1.6
Men	25-34	1,048	23.0	0.0	\$41,181	3.4	1.4
Men	35-44	970	21.3	0.0	\$71,006	3.6	1.3
Men	45-54	832	18.3	0.0	\$74,904	3.5	1.2
Men	55-64	789	17.3	0.0	\$83,173	3.5	1.2
Men	65-Up	412	9.0	0.0	\$63,918	3.2	1.1
Men	N/A	3	0.1	0.0	\$56,955	4.0	2.3
Men	Total	4,555	100.0	36.2	\$60,323	3.4	1.3
N/A	N/A	556	100.0	0.0	\$22,717	2.5	1.2
N/A	Total	556	100.0	4.4	\$22,717	2.5	1.2
Total	00-19	261	2.1	0.0	\$6,182	2.7	1.5
Total	20-24	1,024	8.1	0.0	\$20,051	3.3	1.6
Total	25-34	2,851	22.7	0.0	\$34,173	3.5	1.4
Total	35-44	2,428	19.3	0.0	\$53,580	3.7	1.3
Total	45-54	2,301	18.3	0.0	\$55,516	3.7	1.2
Total	55-64	2,263	18.0	0.0	\$57,194	3.7	1.2
Total	65-Up	876	7.0	0.0	\$46,255	3.4	1.1
Total	N/A	574	4.6	0.0	\$23,025	2.5	1.2
Total	Total	12,578	100.0	100.0	\$44,568	3.5	1.3

Note: Persons worked any time during the year.

Industry Determination: Based on the industry of employment in which the person made the most money in the year.

N/A: Represents persons with demographic data that are unavailable.

N/A = Nonresidents, individuals for whom demographic data are not available.

Source: Demographics of Persons Working in Wyoming by County, Industry, Age, & Gender, 2000-2018.

Research & Planning, Wyoming Department of Workforce Services.

Prepared by M. Moore, Research & Planning, WY DWS, 7/31/19.

Average Earnings by Age and Gender in the 52 & 53 - Financial Activities Industry in 2017

Gender	Age Group	Number	Age Percent	Gender Percent	Average Annual Wage	Average Quarters Worked	Average Annual Employers
Women	00-19	123	1.6	0.0	\$7,640	2.8	1.6
Women	20-24	592	7.9	0.0	\$19,857	3.4	1.6
Women	25-34	1,789	23.9	0.0	\$31,151	3.6	1.4
Women	35-44	1,527	20.4	0.0	\$42,188	3.7	1.3
Women	45-54	1,443	19.2	0.0	\$45,661	3.7	1.3
Women	55-64	1,518	20.2	0.0	\$44,044	3.7	1.2
Women	65-Up	496	6.6	0.0	\$30,112	3.4	1.1
Women	N/A	13	0.2	0.0	\$39,135	3.2	1.1
Women	Total	7,501	100.0	57.9	\$37,467	3.6	1.3
Men	00-19	131	2.8	0.0	\$6,734	2.5	1.4
Men	20-24	362	7.6	0.0	\$21,999	3.0	1.6
Men	25-34	1,147	24.1	0.0	\$43,868	3.3	1.4
Men	35-44	1,088	22.9	0.0	\$71,952	3.4	1.3
Men	45-54	808	17.0	0.0	\$79,379	3.5	1.2
Men	55-64	809	17.0	0.0	\$89,494	3.5	1.1
Men	65-Up	413	8.7	0.0	\$66,544	3.3	1.1
Men	N/A	3	0.1	0.0	\$35,167	3.7	1.0
Men	Total	4,761	100.0	36.7	\$63,343	3.4	1.3
N/A	N/A	702	100.0	0.0	\$19,233	2.3	1.1
N/A	Total	702	100.0	5.4	\$19,233	2.3	1.1
Total	00-19	254	2.0	0.0	\$7,173	2.7	1.5
Total	20-24	954	7.4	0.0	\$20,670	3.3	1.6
Total	25-34	2,936	22.6	0.0	\$36,119	3.5	1.4
Total	35-44	2,615	20.2	0.0	\$54,572	3.6	1.3
Total	45-54	2,251	17.4	0.0	\$57,764	3.6	1.2
Total	55-64	2,327	17.9	0.0	\$59,845	3.6	1.2
Total	65-Up	909	7.0	0.0	\$46,664	3.4	1.1
Total	N/A	718	5.5	0.0	\$19,660	2.3	1.1
Total	Total	12,964	100.0	100.0	\$45,982	3.5	1.3

Note: Persons worked any time during the year.

Industry Determination: Based on the industry of employment in which the person made the most money in the year.

N/A: Represents persons with demographic data that are unavailable.

N/A = Nonresidents, individuals for whom demographic data are not available.

Source: Demographics of Persons Working in Wyoming by County, Industry, Age, & Gender, 2000-2018.

Research & Planning, Wyoming Department of Workforce Services.

Prepared by M. Moore, Research & Planning, WY DWS, 7/31/19.

Average Earnings by Age and Gender in the 52 & 53 - Financial Activities Industry in 2018

Gender	Age Group	Number	Age Percent	Gender Percent	Average Annual Wage	Average Quarters Worked	Average Annual Employers
Women	00-19	114	1.5	0.0	\$8,236	2.9	1.7
Women	20-24	605	8.0	0.0	\$21,299	3.5	1.7
Women	25-34	1,769	23.5	0.0	\$32,221	3.6	1.4
Women	35-44	1,584	21.0	0.0	\$43,431	3.7	1.3
Women	45-54	1,432	19.0	0.0	\$48,536	3.7	1.3
Women	55-64	1,499	19.9	0.0	\$46,226	3.7	1.2
Women	65-Up	519	6.9	0.0	\$34,898	3.5	1.1
Women	N/A	11	0.1	0.0	\$34,219	3.4	1.2
Women	Total	7,533	100.0	57.1	\$39,414	3.6	1.3
Men	00-19	133	2.8	0.0	\$8,241	2.6	1.5
Men	20-24	369	7.7	0.0	\$27,606	3.3	1.7
Men	25-34	1,098	22.9	0.0	\$47,234	3.4	1.4
Men	35-44	1,125	23.4	0.0	\$76,782	3.6	1.2
Men	45-54	807	16.8	0.0	\$87,283	3.6	1.2
Men	55-64	852	17.8	0.0	\$94,064	3.5	1.2
Men	65-Up	413	8.6	0.0	\$59,672	3.2	1.1
Men	N/A	3	0.0	0.0	\$26,831	4.0	2.0
Men	Total	4,799	100.0	36.4	\$67,682	3.5	1.3
N/A	N/A	851	100.0	0.0	\$22,551	2.4	1.2
N/A	Total	851	100.0	6.5	\$22,551	2.4	1.2
Total	00-19	247	1.9	0.0	\$8,239	2.8	1.6
Total	20-24	974	7.4	0.0	\$23,688	3.4	1.7
Total	25-34	2,867	21.7	0.0	\$37,971	3.5	1.4
Total	35-44	2,709	20.5	0.0	\$57,281	3.6	1.3
Total	45-54	2,239	17.0	0.0	\$62,501	3.6	1.3
Total	55-64	2,351	17.8	0.0	\$63,562	3.6	1.2
Total	65-Up	932	7.1	0.0	\$45,876	3.4	1.1
Total	N/A	864	6.6	0.0	\$22,709	2.4	1.2
Total	Total	13,183	100.0	100.0	\$48,615	3.5	1.3

Note: Persons worked any time during the year.

Industry Determination: Based on the industry of employment in which the person made the most money in the year.

N/A: Represents persons with demographic data that are unavailable.

N/A = Nonresidents, individuals for whom demographic data are not available.

Source: Demographics of Persons Working in Wyoming by County, Industry, Age, & Gender, 2000-2018.

Research & Planning, Wyoming Department of Workforce Services.

Prepared by M. Moore, Research & Planning, WY DWS, 7/31/19.