

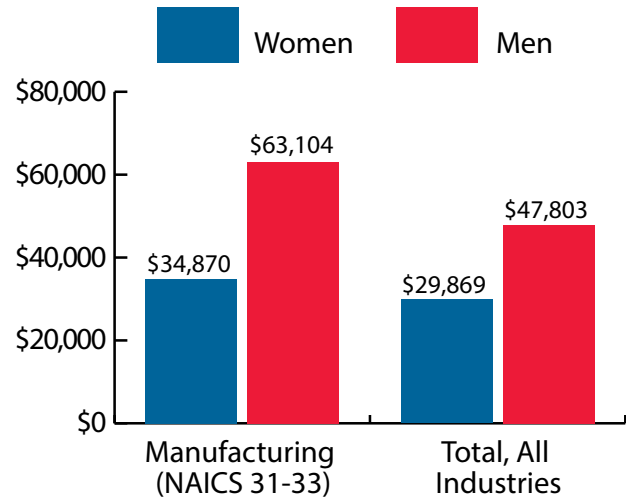
Wyoming Manufacturing (NAICS 31-33) at a Glance, 2018

Demographics of Persons Working in Wyoming by County, Industry, Age, & Gender, 2000-2018

Table: Total Number of Persons Working in Manufacturing (NAICS 31-33) in Wyoming at Any Time by Gender and Age, 2017-2018

Gender	2017	2018	Change	
			N	%
Women	2,213	2,304	91	4.1
Men	8,215	8,492	277	3.4
Nonresidents	638	753	115	18.0
Total	11,066	11,549	483	4.4

Age	2017	2018	Change	
			N	%
00-19	312	350	38	12.2
20-24	862	941	79	9.2
25-34	2,487	2,540	53	2.1
35-44	2,238	2,401	163	7.3
45-54	1,991	1,997	6	0.3
55-64	2,024	2,027	3	0.1
65-Up	504	528	24	4.8
Nonresidents	648	765	117	18.1
Total	11,066	11,549	483	4.4



Women's Wages as % of Men's Wages
 Manufacturing (NAICS 31-33): 55.3%
 Total, All Industries: 62.5%

Figure: Average Annual Wages by Gender, 2018

Total = 11,549

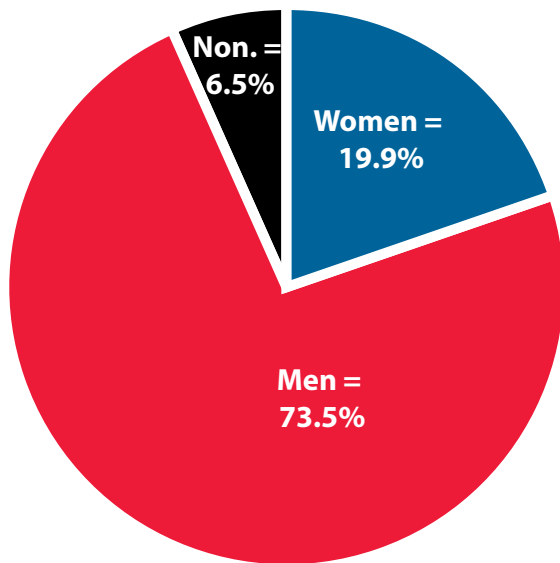


Figure: Persons Working by Gender, 2018

Total = 11,549

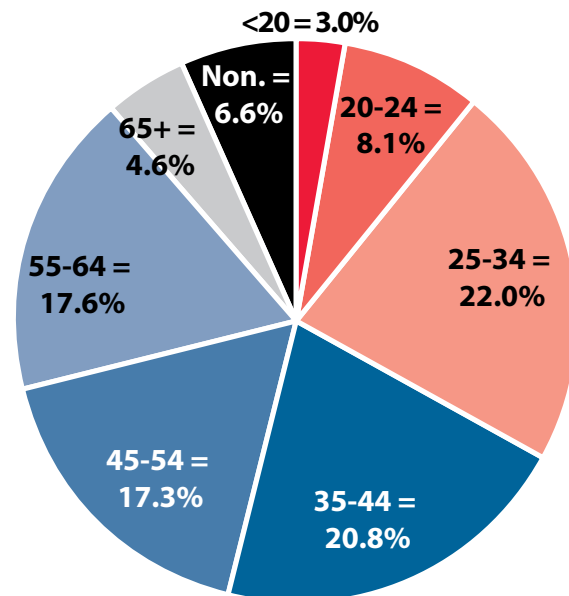


Figure: Persons Working by Age, 2018

Note: Nonresidents are individuals for whom demographic data are not available.
 Source: Demographics of Persons Working in Wyoming by County, Industry, Age, & Gender, 2000-2018. Research & Planning, Wyoming Department of Workforce Services. Prepared by M. Moore, Research & Planning, WY DWS, 7/31/19.

Persons Working in Manufacturing (NAICS 31-33) in Wyoming by Gender and Age, 2000-2018

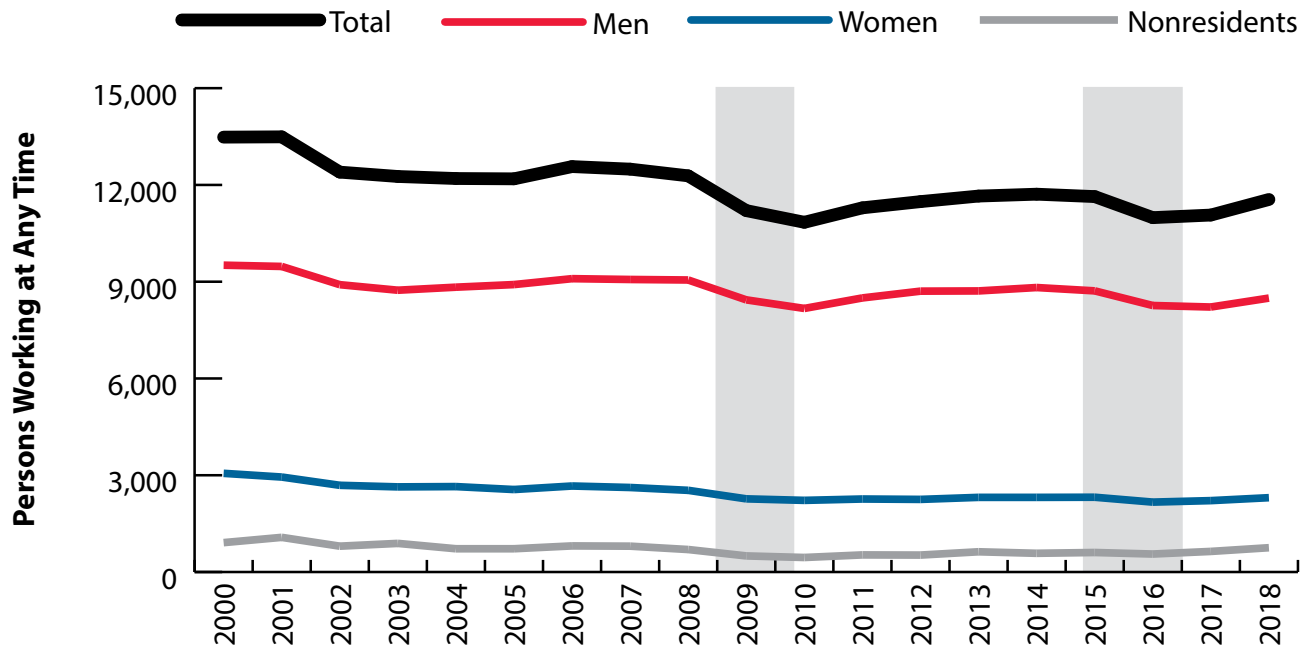


Figure: Persons Working in Manufacturing (NAICS 31-33) in Wyoming at Any Time by Gender, 2000-2018

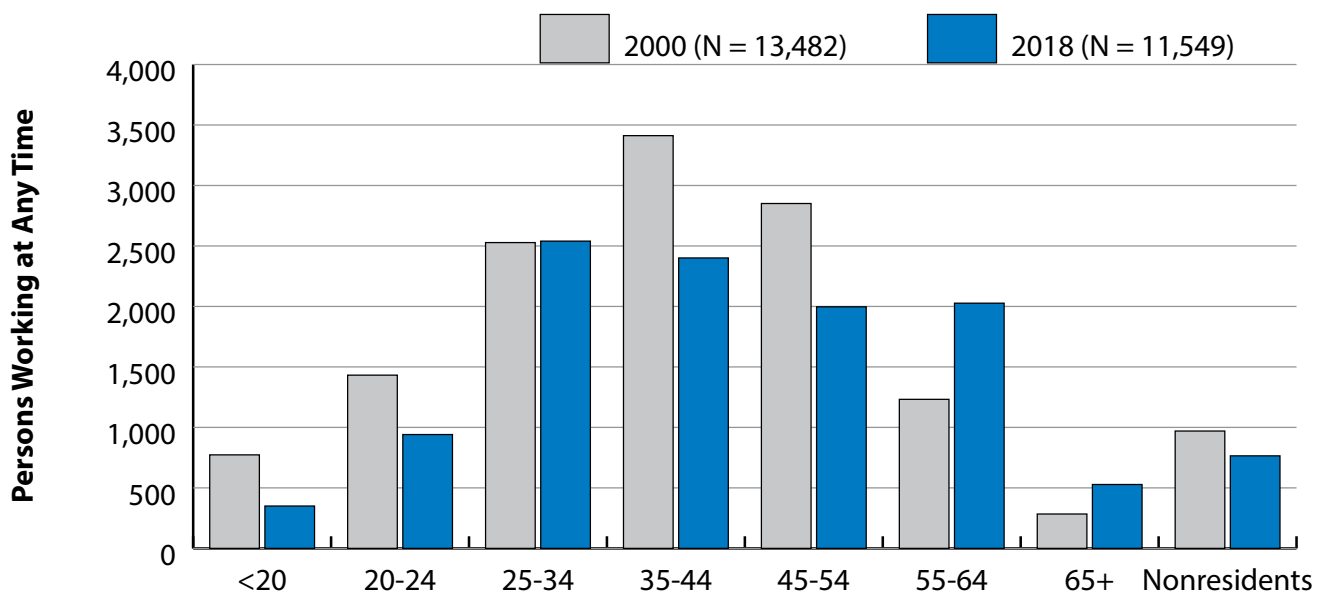


Figure: Persons Working in Manufacturing (NAICS 31-33) in Wyoming at Any Time by Age, 2000-2018

Note: Nonresidents are individuals for whom demographic data are not available. Shaded areas indicate periods of economic downturn: 2009Q1-2010Q1 and 2015Q2-2016Q4. Source: Demographics of Persons Working in Wyoming by County, Industry, Age, & Gender, 2000-2018. Research & Planning, Wyoming Department of Workforce Services. Prepared by M. Moore, Research & Planning, WY DWS, 7/31/19.

Average Earnings by Age and Gender in the 31,32 &,33 - Manufacturing Industry in 2000

Gender	Age Group	Number	Age Percent	Gender Percent	Average Annual Wage	Average Quarters Worked	Average Annual Employers
Women	00-19	242	7.9	0.0	\$3,794	2.6	1.7
Women	20-24	334	10.9	0.0	\$7,907	3.0	1.9
Women	25-34	566	18.5	0.0	\$15,610	3.3	1.6
Women	35-44	860	28.1	0.0	\$19,232	3.4	1.5
Women	45-54	664	21.7	0.0	\$22,088	3.5	1.3
Women	55-64	296	9.7	0.0	\$18,673	3.5	1.2
Women	65-Up	79	2.6	0.0	\$8,798	3.3	1.1
Women	N/A	18	0.6	0.0	\$12,394	2.2	1.6
Women	Total	3,059	100.0	22.7	\$16,360	3.3	1.5
Men	00-19	531	5.6	0.0	\$4,553	2.6	1.8
Men	20-24	1,098	11.5	0.0	\$13,453	3.1	1.9
Men	25-34	1,962	20.6	0.0	\$26,187	3.5	1.6
Men	35-44	2,552	26.8	0.0	\$36,072	3.6	1.3
Men	45-54	2,187	23.0	0.0	\$43,937	3.7	1.2
Men	55-64	936	9.8	0.0	\$40,276	3.6	1.2
Men	65-Up	205	2.2	0.0	\$21,493	3.1	1.2
Men	N/A	41	0.4	0.0	\$22,501	2.9	1.4
Men	Total	9,512	100.0	70.6	\$31,512	3.5	1.4
N/A	N/A	911	100.0	0.0	\$7,654	1.6	1.1
N/A	Total	911	100.0	6.8	\$7,654	1.6	1.1
Total	00-19	773	5.7	0.0	\$4,315	2.6	1.8
Total	20-24	1,432	10.6	0.0	\$12,160	3.1	1.9
Total	25-34	2,528	18.8	0.0	\$23,819	3.4	1.6
Total	35-44	3,412	25.3	0.0	\$31,827	3.6	1.4
Total	45-54	2,851	21.1	0.0	\$38,848	3.6	1.2
Total	55-64	1,232	9.1	0.0	\$35,086	3.6	1.2
Total	65-Up	284	2.1	0.0	\$17,962	3.2	1.1
Total	N/A	970	7.2	0.0	\$8,370	1.6	1.1
Total	Total	13,482	100.0	100.0	\$26,462	3.3	1.4

Note: Persons worked any time during the year.

Industry Determination: Based on the industry of employment in which the person made the most money in the year.

N/A: Represents persons with demographic data that are unavailable.

N/A = Nonresidents, individuals for whom demographic data are not available.

Source: Demographics of Persons Working in Wyoming by County, Industry, Age, & Gender, 2000-2018.

Research & Planning, Wyoming Department of Workforce Services.

Prepared by M. Moore, Research & Planning, WY DWS, 7/31/19.

Average Earnings by Age and Gender in the 31,32 & 33 - Manufacturing Industry in 2001

Gender	Age Group	Number	Age Percent	Gender Percent	Average Annual Wage	Average Quarters Worked	Average Annual Employers
Women	00-19	225	7.6	0.0	\$3,545	2.6	1.7
Women	20-24	310	10.5	0.0	\$7,992	2.9	1.9
Women	25-34	525	17.8	0.0	\$15,738	3.2	1.6
Women	35-44	798	27.1	0.0	\$19,592	3.4	1.5
Women	45-54	688	23.4	0.0	\$22,278	3.4	1.3
Women	55-64	300	10.2	0.0	\$20,460	3.4	1.2
Women	65-Up	83	2.8	0.0	\$8,701	3.0	1.1
Women	N/A	15	0.5	0.0	\$17,438	2.3	1.3
Women	Total	2,944	100.0	21.8	\$16,855	3.3	1.5
Men	00-19	499	5.3	0.0	\$5,045	2.6	1.8
Men	20-24	1,079	11.4	0.0	\$15,264	3.1	1.9
Men	25-34	1,948	20.6	0.0	\$26,356	3.4	1.6
Men	35-44	2,497	26.4	0.0	\$36,855	3.5	1.4
Men	45-54	2,192	23.1	0.0	\$45,431	3.6	1.2
Men	55-64	1,003	10.6	0.0	\$43,420	3.5	1.2
Men	65-Up	218	2.3	0.0	\$22,195	3.1	1.1
Men	N/A	37	0.4	0.0	\$20,409	2.8	1.5
Men	Total	9,473	100.0	70.2	\$32,839	3.4	1.4
N/A	N/A	1,074	100.0	0.0	\$8,272	1.4	1.1
N/A	Total	1,074	100.0	8.0	\$8,272	1.4	1.1
Total	00-19	724	5.4	0.0	\$4,579	2.6	1.7
Total	20-24	1,389	10.3	0.0	\$13,641	3.1	1.9
Total	25-34	2,473	18.3	0.0	\$24,102	3.3	1.6
Total	35-44	3,295	24.4	0.0	\$32,674	3.5	1.4
Total	45-54	2,880	21.3	0.0	\$39,900	3.6	1.3
Total	55-64	1,303	9.7	0.0	\$38,134	3.5	1.2
Total	65-Up	301	2.2	0.0	\$18,474	3.1	1.1
Total	N/A	1,126	8.3	0.0	\$8,792	1.5	1.1
Total	Total	13,491	100.0	100.0	\$27,395	3.2	1.4

Note: Persons worked any time during the year.

Industry Determination: Based on the industry of employment in which the person made the most money in the year.

N/A: Represents persons with demographic data that are unavailable.

N/A = Nonresidents, individuals for whom demographic data are not available.

Source: Demographics of Persons Working in Wyoming by County, Industry, Age, & Gender, 2000-2018.

Research & Planning, Wyoming Department of Workforce Services.

Prepared by M. Moore, Research & Planning, WY DWS, 7/31/19.

Average Earnings by Age and Gender in the 31,32 & 33 - Manufacturing Industry in 2002

Gender	Age Group	Number	Age Percent	Gender Percent	Average Annual Wage	Average Quarters Worked	Average Annual Employers
Women	00-19	188	7.0	0.0	\$4,262	2.7	1.7
Women	20-24	281	10.5	0.0	\$8,671	2.9	1.8
Women	25-34	479	17.8	0.0	\$16,685	3.3	1.5
Women	35-44	690	25.7	0.0	\$20,535	3.4	1.4
Women	45-54	655	24.4	0.0	\$22,719	3.5	1.3
Women	55-64	311	11.6	0.0	\$20,655	3.5	1.2
Women	65-Up	73	2.7	0.0	\$11,530	3.2	1.1
Women	N/A	11	0.4	0.0	\$19,906	2.7	1.5
Women	Total	2,688	100.0	21.7	\$17,769	3.3	1.4
Men	00-19	451	5.1	0.0	\$5,242	2.6	1.7
Men	20-24	975	10.9	0.0	\$14,926	3.1	1.8
Men	25-34	1,822	20.5	0.0	\$26,930	3.4	1.5
Men	35-44	2,211	24.8	0.0	\$37,522	3.6	1.3
Men	45-54	2,193	24.6	0.0	\$44,880	3.6	1.2
Men	55-64	1,031	11.6	0.0	\$45,147	3.6	1.2
Men	65-Up	208	2.3	0.0	\$21,646	3.2	1.1
Men	N/A	17	0.2	0.0	\$21,117	2.7	1.2
Men	Total	8,908	100.0	71.9	\$33,540	3.4	1.4
N/A	N/A	801	100.0	0.0	\$9,949	1.6	1.1
N/A	Total	801	100.0	6.5	\$9,949	1.6	1.1
Total	00-19	639	5.2	0.0	\$4,953	2.6	1.7
Total	20-24	1,256	10.1	0.0	\$13,527	3.0	1.8
Total	25-34	2,301	18.6	0.0	\$24,797	3.4	1.5
Total	35-44	2,901	23.4	0.0	\$33,482	3.5	1.3
Total	45-54	2,848	23.0	0.0	\$39,783	3.6	1.2
Total	55-64	1,342	10.8	0.0	\$39,471	3.6	1.2
Total	65-Up	281	2.3	0.0	\$19,018	3.2	1.1
Total	N/A	829	6.7	0.0	\$10,311	1.6	1.1
Total	Total	12,397	100.0	100.0	\$28,596	3.3	1.4

Note: Persons worked any time during the year.

Industry Determination: Based on the industry of employment in which the person made the most money in the year.

N/A: Represents persons with demographic data that are unavailable.

N/A = Nonresidents, individuals for whom demographic data are not available.

Source: Demographics of Persons Working in Wyoming by County, Industry, Age, & Gender, 2000-2018.

Research & Planning, Wyoming Department of Workforce Services.

Prepared by M. Moore, Research & Planning, WY DWS, 7/31/19.

Average Earnings by Age and Gender in the 31,32 & 33 - Manufacturing Industry in 2003

Gender	Age Group	Number	Age Percent	Gender Percent	Average Annual Wage	Average Quarters Worked	Average Annual Employers
Women	00-19	200	7.6	0.0	\$4,084	2.5	1.6
Women	20-24	268	10.2	0.0	\$8,728	2.9	1.8
Women	25-34	438	16.6	0.0	\$16,974	3.3	1.5
Women	35-44	646	24.5	0.0	\$21,187	3.4	1.4
Women	45-54	666	25.2	0.0	\$22,874	3.5	1.3
Women	55-64	327	12.4	0.0	\$21,074	3.4	1.2
Women	65-Up	79	3.0	0.0	\$12,467	3.2	1.0
Women	N/A	15	0.6	0.0	\$42,520	2.3	1.2
Women	Total	2,639	100.0	21.5	\$18,199	3.3	1.4
Men	00-19	406	4.6	0.0	\$4,910	2.6	1.8
Men	20-24	979	11.2	0.0	\$14,855	3.1	1.8
Men	25-34	1,732	19.8	0.0	\$27,416	3.4	1.5
Men	35-44	2,111	24.2	0.0	\$37,995	3.6	1.3
Men	45-54	2,181	25.0	0.0	\$44,545	3.6	1.2
Men	55-64	1,085	12.4	0.0	\$47,119	3.7	1.2
Men	65-Up	224	2.6	0.0	\$22,730	3.2	1.1
Men	N/A	18	0.2	0.0	\$19,371	2.8	1.5
Men	Total	8,736	100.0	71.2	\$34,105	3.4	1.4
N/A	N/A	887	100.0	0.0	\$9,978	1.6	1.1
N/A	Total	887	100.0	7.2	\$9,978	1.6	1.1
Total	00-19	606	4.9	0.0	\$4,637	2.5	1.8
Total	20-24	1,247	10.2	0.0	\$13,538	3.0	1.8
Total	25-34	2,170	17.7	0.0	\$25,308	3.4	1.5
Total	35-44	2,757	22.5	0.0	\$34,057	3.5	1.4
Total	45-54	2,847	23.2	0.0	\$39,475	3.6	1.2
Total	55-64	1,412	11.5	0.0	\$41,087	3.6	1.2
Total	65-Up	303	2.5	0.0	\$20,054	3.2	1.1
Total	N/A	920	7.5	0.0	\$10,692	1.6	1.1
Total	Total	12,262	100.0	100.0	\$28,937	3.3	1.4

Note: Persons worked any time during the year.

Industry Determination: Based on the industry of employment in which the person made the most money in the year.

N/A: Represents persons with demographic data that are unavailable.

N/A = Nonresidents, individuals for whom demographic data are not available.

Source: Demographics of Persons Working in Wyoming by County, Industry, Age, & Gender, 2000-2018.

Research & Planning, Wyoming Department of Workforce Services.

Prepared by M. Moore, Research & Planning, WY DWS, 7/31/19.

Average Earnings by Age and Gender in the 31,32 & 33 - Manufacturing Industry in 2004

Gender	Age Group	Number	Age Percent	Gender Percent	Average Annual Wage	Average Quarters Worked	Average Annual Employers
Women	00-19	199	7.5	0.0	\$3,950	2.4	1.5
Women	20-24	258	9.7	0.0	\$10,246	3.1	1.8
Women	25-34	480	18.1	0.0	\$16,442	3.3	1.5
Women	35-44	630	23.8	0.0	\$22,387	3.4	1.4
Women	45-54	656	24.8	0.0	\$24,700	3.6	1.3
Women	55-64	327	12.3	0.0	\$21,031	3.5	1.2
Women	65-Up	83	3.1	0.0	\$12,781	3.1	1.1
Women	N/A	15	0.6	0.0	\$38,295	2.6	1.1
Women	Total	2,648	100.0	21.7	\$18,935	3.3	1.4
Men	00-19	421	4.8	0.0	\$5,501	2.6	1.7
Men	20-24	1,015	11.5	0.0	\$15,829	3.1	1.8
Men	25-34	1,774	20.1	0.0	\$29,017	3.4	1.5
Men	35-44	2,030	23.0	0.0	\$39,634	3.6	1.3
Men	45-54	2,169	24.6	0.0	\$46,516	3.7	1.2
Men	55-64	1,169	13.2	0.0	\$48,242	3.7	1.2
Men	65-Up	231	2.6	0.0	\$27,967	3.3	1.1
Men	N/A	21	0.2	0.0	\$18,427	3.1	1.5
Men	Total	8,830	100.0	72.4	\$35,612	3.5	1.4
N/A	N/A	721	100.0	0.0	\$11,105	1.9	1.2
N/A	Total	721	100.0	5.9	\$11,105	1.9	1.2
Total	00-19	620	5.1	0.0	\$5,003	2.5	1.7
Total	20-24	1,273	10.4	0.0	\$14,698	3.1	1.8
Total	25-34	2,254	18.5	0.0	\$26,339	3.4	1.5
Total	35-44	2,660	21.8	0.0	\$35,549	3.5	1.3
Total	45-54	2,825	23.2	0.0	\$41,450	3.7	1.2
Total	55-64	1,496	12.3	0.0	\$42,295	3.6	1.2
Total	65-Up	314	2.6	0.0	\$23,953	3.2	1.1
Total	N/A	757	6.2	0.0	\$11,847	1.9	1.2
Total	Total	12,199	100.0	100.0	\$30,543	3.3	1.4

Note: Persons worked any time during the year.

Industry Determination: Based on the industry of employment in which the person made the most money in the year.

N/A: Represents persons with demographic data that are unavailable.

N/A = Nonresidents, individuals for whom demographic data are not available.

Source: Demographics of Persons Working in Wyoming by County, Industry, Age, & Gender, 2000-2018.

Research & Planning, Wyoming Department of Workforce Services.

Prepared by M. Moore, Research & Planning, WY DWS, 7/31/19.

Average Earnings by Age and Gender in the 31,32 & 33 - Manufacturing Industry in 2005

Gender	Age Group	Number	Age Percent	Gender Percent	Average Annual Wage	Average Quarters Worked	Average Annual Employers
Women	00-19	170	6.6	0.0	\$4,705	2.6	1.6
Women	20-24	268	10.5	0.0	\$10,018	2.9	1.8
Women	25-34	439	17.2	0.0	\$16,642	3.2	1.5
Women	35-44	589	23.0	0.0	\$25,504	3.5	1.4
Women	45-54	661	25.9	0.0	\$24,277	3.6	1.3
Women	55-64	329	12.9	0.0	\$22,442	3.5	1.2
Women	65-Up	86	3.4	0.0	\$12,947	3.1	1.1
Women	N/A	15	0.6	0.0	\$17,094	2.5	1.6
Women	Total	2,557	100.0	21.0	\$19,794	3.3	1.4
Men	00-19	393	4.4	0.0	\$5,959	2.6	1.8
Men	20-24	1,079	12.1	0.0	\$17,796	3.2	1.9
Men	25-34	1,795	20.1	0.0	\$30,666	3.4	1.5
Men	35-44	1,983	22.3	0.0	\$40,986	3.6	1.4
Men	45-54	2,202	24.7	0.0	\$48,694	3.7	1.2
Men	55-64	1,196	13.4	0.0	\$49,955	3.6	1.2
Men	65-Up	243	2.7	0.0	\$29,519	3.3	1.1
Men	N/A	20	0.2	0.0	\$20,699	3.1	1.8
Men	Total	8,911	100.0	73.1	\$37,305	3.5	1.4
N/A	N/A	721	100.0	0.0	\$11,399	2.0	1.2
N/A	Total	721	100.0	5.9	\$11,399	2.0	1.2
Total	00-19	563	4.6	0.0	\$5,580	2.6	1.7
Total	20-24	1,347	11.1	0.0	\$16,248	3.1	1.9
Total	25-34	2,234	18.3	0.0	\$27,910	3.4	1.5
Total	35-44	2,572	21.1	0.0	\$37,441	3.6	1.4
Total	45-54	2,863	23.5	0.0	\$43,057	3.7	1.2
Total	55-64	1,525	12.5	0.0	\$44,019	3.6	1.2
Total	65-Up	329	2.7	0.0	\$25,187	3.3	1.1
Total	N/A	756	6.2	0.0	\$11,758	2.1	1.2
Total	Total	12,189	100.0	100.0	\$32,099	3.4	1.4

Note: Persons worked any time during the year.

Industry Determination: Based on the industry of employment in which the person made the most money in the year.

N/A: Represents persons with demographic data that are unavailable.

N/A = Nonresidents, individuals for whom demographic data are not available.

Source: Demographics of Persons Working in Wyoming by County, Industry, Age, & Gender, 2000-2018.

Research & Planning, Wyoming Department of Workforce Services.

Prepared by M. Moore, Research & Planning, WY DWS, 7/31/19.

Average Earnings by Age and Gender in the 31,32 & 33 - Manufacturing Industry in 2006

Gender	Age Group	Number	Age Percent	Gender Percent	Average Annual Wage	Average Quarters Worked	Average Annual Employers
Women	00-19	168	6.3	0.0	\$4,690	2.7	1.6
Women	20-24	290	10.9	0.0	\$11,923	3.0	1.9
Women	25-34	477	17.9	0.0	\$17,552	3.3	1.6
Women	35-44	611	22.9	0.0	\$25,951	3.5	1.5
Women	45-54	693	26.0	0.0	\$26,177	3.6	1.3
Women	55-64	329	12.3	0.0	\$25,785	3.6	1.2
Women	65-Up	89	3.3	0.0	\$12,961	3.0	1.1
Women	N/A	9	0.3	0.0	\$22,226	3.0	1.1
Women	Total	2,666	100.0	21.2	\$21,174	3.4	1.5
Men	00-19	440	4.8	0.0	\$6,477	2.6	1.8
Men	20-24	1,075	11.8	0.0	\$19,350	3.2	1.8
Men	25-34	1,876	20.6	0.0	\$33,601	3.5	1.6
Men	35-44	1,917	21.1	0.0	\$43,826	3.6	1.4
Men	45-54	2,211	24.3	0.0	\$50,253	3.7	1.3
Men	55-64	1,282	14.1	0.0	\$51,989	3.7	1.1
Men	65-Up	278	3.1	0.0	\$31,448	3.4	1.1
Men	N/A	15	0.2	0.0	\$27,671	2.8	1.5
Men	Total	9,094	100.0	72.4	\$39,325	3.5	1.4
N/A	N/A	809	100.0	0.0	\$12,844	2.0	1.2
N/A	Total	809	100.0	6.4	\$12,844	2.0	1.2
Total	00-19	608	4.8	0.0	\$5,983	2.6	1.7
Total	20-24	1,365	10.9	0.0	\$17,772	3.1	1.8
Total	25-34	2,353	18.7	0.0	\$30,348	3.4	1.6
Total	35-44	2,528	20.1	0.0	\$39,505	3.5	1.4
Total	45-54	2,904	23.1	0.0	\$44,508	3.6	1.3
Total	55-64	1,611	12.8	0.0	\$46,638	3.7	1.2
Total	65-Up	367	2.9	0.0	\$26,964	3.3	1.1
Total	N/A	833	6.6	0.0	\$13,212	2.0	1.2
Total	Total	12,569	100.0	100.0	\$33,770	3.4	1.4

Note: Persons worked any time during the year.

Industry Determination: Based on the industry of employment in which the person made the most money in the year.

N/A: Represents persons with demographic data that are unavailable.

N/A = Nonresidents, individuals for whom demographic data are not available.

Source: Demographics of Persons Working in Wyoming by County, Industry, Age, & Gender, 2000-2018.

Research & Planning, Wyoming Department of Workforce Services.

Prepared by M. Moore, Research & Planning, WY DWS, 7/31/19.

Average Earnings by Age and Gender in the 31,32 & 33 - Manufacturing Industry in 2007

Gender	Age Group	Number	Age Percent	Gender Percent	Average Annual Wage	Average Quarters Worked	Average Annual Employers
Women	00-19	190	7.3	0.0	\$5,189	2.7	1.7
Women	20-24	267	10.2	0.0	\$12,505	3.1	1.9
Women	25-34	497	19.0	0.0	\$19,226	3.3	1.7
Women	35-44	546	20.8	0.0	\$27,990	3.5	1.5
Women	45-54	670	25.6	0.0	\$28,572	3.6	1.3
Women	55-64	357	13.6	0.0	\$26,754	3.5	1.2
Women	65-Up	84	3.2	0.0	\$17,674	3.4	1.1
Women	N/A	9	0.3	0.0	\$26,374	3.2	1.1
Women	Total	2,620	100.0	21.0	\$22,740	3.4	1.5
Men	00-19	382	4.2	0.0	\$6,585	2.6	1.8
Men	20-24	1,022	11.3	0.0	\$22,532	3.2	1.7
Men	25-34	1,959	21.6	0.0	\$36,150	3.5	1.5
Men	35-44	1,854	20.4	0.0	\$46,822	3.6	1.4
Men	45-54	2,182	24.1	0.0	\$52,982	3.7	1.2
Men	55-64	1,367	15.1	0.0	\$53,529	3.7	1.1
Men	65-Up	295	3.3	0.0	\$37,906	3.3	1.1
Men	N/A	8	0.1	0.0	\$30,530	3.0	1.5
Men	Total	9,069	100.0	72.6	\$42,273	3.5	1.4
N/A	N/A	801	100.0	0.0	\$12,277	2.0	1.2
N/A	Total	801	100.0	6.4	\$12,277	2.0	1.2
Total	00-19	572	4.6	0.0	\$6,121	2.7	1.8
Total	20-24	1,289	10.3	0.0	\$20,455	3.2	1.8
Total	25-34	2,456	19.7	0.0	\$32,726	3.4	1.6
Total	35-44	2,400	19.2	0.0	\$42,537	3.6	1.4
Total	45-54	2,852	22.8	0.0	\$47,248	3.7	1.3
Total	55-64	1,724	13.8	0.0	\$47,985	3.6	1.2
Total	65-Up	379	3.0	0.0	\$33,422	3.3	1.1
Total	N/A	818	6.5	0.0	\$12,611	2.0	1.2
Total	Total	12,490	100.0	100.0	\$36,252	3.4	1.4

Note: Persons worked any time during the year.

Industry Determination: Based on the industry of employment in which the person made the most money in the year.

N/A: Represents persons with demographic data that are unavailable.

N/A = Nonresidents, individuals for whom demographic data are not available.

Source: Demographics of Persons Working in Wyoming by County, Industry, Age, & Gender, 2000-2018.

Research & Planning, Wyoming Department of Workforce Services.

Prepared by M. Moore, Research & Planning, WY DWS, 7/31/19.

Average Earnings by Age and Gender in the 31,32 &,33 - Manufacturing Industry in 2008

Gender	Age Group	Number	Age Percent	Gender Percent	Average Annual Wage	Average Quarters Worked	Average Annual Employers
Women	00-19	158	6.2	0.0	\$5,423	2.9	1.6
Women	20-24	261	10.3	0.0	\$13,556	3.0	1.7
Women	25-34	460	18.2	0.0	\$21,409	3.4	1.6
Women	35-44	497	19.6	0.0	\$29,054	3.5	1.4
Women	45-54	687	27.1	0.0	\$31,512	3.6	1.3
Women	55-64	362	14.3	0.0	\$27,829	3.5	1.2
Women	65-Up	99	3.9	0.0	\$17,741	3.4	1.1
Women	N/A	8	0.3	0.0	\$28,990	2.9	1.1
Women	Total	2,532	100.0	20.6	\$24,642	3.4	1.4
Men	00-19	390	4.3	0.0	\$7,190	2.7	1.7
Men	20-24	1,007	11.1	0.0	\$23,762	3.1	1.8
Men	25-34	1,974	21.8	0.0	\$40,294	3.5	1.5
Men	35-44	1,783	19.7	0.0	\$49,747	3.6	1.4
Men	45-54	2,203	24.3	0.0	\$55,402	3.7	1.2
Men	55-64	1,397	15.4	0.0	\$56,019	3.7	1.1
Men	65-Up	295	3.3	0.0	\$40,579	3.3	1.1
Men	N/A	4	0.0	0.0	\$48,889	3.8	1.0
Men	Total	9,053	100.0	73.7	\$45,007	3.5	1.4
N/A	N/A	697	100.0	0.0	\$12,499	2.1	1.2
N/A	Total	697	100.0	5.7	\$12,499	2.1	1.2
Total	00-19	548	4.5	0.0	\$6,681	2.7	1.7
Total	20-24	1,268	10.3	0.0	\$21,661	3.1	1.7
Total	25-34	2,434	19.8	0.0	\$36,725	3.5	1.5
Total	35-44	2,280	18.6	0.0	\$45,236	3.6	1.4
Total	45-54	2,890	23.5	0.0	\$49,723	3.7	1.2
Total	55-64	1,759	14.3	0.0	\$50,217	3.6	1.2
Total	65-Up	394	3.2	0.0	\$34,840	3.3	1.1
Total	N/A	709	5.8	0.0	\$12,891	2.1	1.2
Total	Total	12,282	100.0	100.0	\$38,964	3.4	1.4

Note: Persons worked any time during the year.

Industry Determination: Based on the industry of employment in which the person made the most money in the year.

N/A: Represents persons with demographic data that are unavailable.

N/A = Nonresidents, individuals for whom demographic data are not available.

Source: Demographics of Persons Working in Wyoming by County, Industry, Age, & Gender, 2000-2018.

Research & Planning, Wyoming Department of Workforce Services.

Prepared by M. Moore, Research & Planning, WY DWS, 7/31/19.

Average Earnings by Age and Gender in the 31,32 & 33 - Manufacturing Industry in 2009

Gender	Age Group	Number	Age Percent	Gender Percent	Average Annual Wage	Average Quarters Worked	Average Annual Employers
Women	00-19	113	5.0	0.0	\$5,287	3.0	1.5
Women	20-24	201	8.9	0.0	\$14,791	3.1	1.6
Women	25-34	409	18.0	0.0	\$22,360	3.3	1.4
Women	35-44	438	19.3	0.0	\$30,253	3.5	1.3
Women	45-54	640	28.2	0.0	\$31,366	3.6	1.2
Women	55-64	359	15.8	0.0	\$28,306	3.5	1.2
Women	65-Up	104	4.6	0.0	\$18,050	3.3	1.2
Women	N/A	4	0.2	0.0	\$63,273	4.0	1.0
Women	Total	2,268	100.0	20.2	\$25,720	3.4	1.3
Men	00-19	256	3.0	0.0	\$6,880	2.7	1.4
Men	20-24	797	9.4	0.0	\$22,883	3.1	1.5
Men	25-34	1,864	22.1	0.0	\$40,531	3.5	1.3
Men	35-44	1,643	19.5	0.0	\$49,866	3.6	1.2
Men	45-54	2,126	25.2	0.0	\$54,082	3.7	1.2
Men	55-64	1,448	17.2	0.0	\$54,975	3.6	1.1
Men	65-Up	298	3.5	0.0	\$34,675	3.4	1.1
Men	N/A	5	0.1	0.0	\$38,882	3.4	1.0
Men	Total	8,437	100.0	75.3	\$45,346	3.5	1.2
N/A	N/A	499	100.0	0.0	\$16,761	2.4	1.1
N/A	Total	499	100.0	4.5	\$16,761	2.4	1.1
Total	00-19	369	3.3	0.0	\$6,392	2.8	1.5
Total	20-24	998	8.9	0.0	\$21,253	3.1	1.5
Total	25-34	2,273	20.3	0.0	\$37,261	3.5	1.3
Total	35-44	2,081	18.6	0.0	\$45,738	3.6	1.2
Total	45-54	2,766	24.7	0.0	\$48,826	3.6	1.2
Total	55-64	1,807	16.1	0.0	\$49,677	3.6	1.1
Total	65-Up	402	3.6	0.0	\$30,374	3.3	1.1
Total	N/A	508	4.5	0.0	\$17,345	2.4	1.1
Total	Total	11,204	100.0	100.0	\$40,100	3.5	1.2

Note: Persons worked any time during the year.

Industry Determination: Based on the industry of employment in which the person made the most money in the year.

N/A: Represents persons with demographic data that are unavailable.

N/A = Nonresidents, individuals for whom demographic data are not available.

Source: Demographics of Persons Working in Wyoming by County, Industry, Age, & Gender, 2000-2018.

Research & Planning, Wyoming Department of Workforce Services.

Prepared by M. Moore, Research & Planning, WY DWS, 7/31/19.

Average Earnings by Age and Gender in the 31,32 &,33 - Manufacturing Industry in 2010

Gender	Age Group	Number	Age Percent	Gender Percent	Average Annual Wage	Average Quarters Worked	Average Annual Employers
Women	00-19	113	5.1	0.0	\$4,467	2.7	1.5
Women	20-24	214	9.6	0.0	\$14,885	3.1	1.6
Women	25-34	397	17.9	0.0	\$22,609	3.3	1.4
Women	35-44	424	19.1	0.0	\$29,404	3.5	1.3
Women	45-54	591	26.6	0.0	\$32,787	3.6	1.2
Women	55-64	379	17.1	0.0	\$29,653	3.6	1.2
Women	65-Up	97	4.4	0.0	\$18,604	3.2	1.1
Women	N/A	6	0.3	0.0	\$40,977	3.5	1.0
Women	Total	2,221	100.0	20.5	\$26,024	3.4	1.3
Men	00-19	266	3.3	0.0	\$5,600	2.4	1.4
Men	20-24	731	8.9	0.0	\$22,524	3.0	1.5
Men	25-34	1,814	22.2	0.0	\$42,777	3.5	1.4
Men	35-44	1,621	19.8	0.0	\$50,514	3.6	1.3
Men	45-54	2,005	24.5	0.0	\$56,270	3.7	1.2
Men	55-64	1,439	17.6	0.0	\$58,318	3.6	1.1
Men	65-Up	291	3.6	0.0	\$37,504	3.4	1.1
Men	N/A	4	0.0	0.0	\$35,396	3.0	1.0
Men	Total	8,171	100.0	75.4	\$47,146	3.5	1.3
N/A	N/A	450	100.0	0.0	\$20,112	2.2	1.1
N/A	Total	450	100.0	4.2	\$20,112	2.2	1.1
Total	00-19	379	3.5	0.0	\$5,262	2.5	1.5
Total	20-24	945	8.7	0.0	\$20,794	3.0	1.5
Total	25-34	2,211	20.4	0.0	\$39,156	3.5	1.4
Total	35-44	2,045	18.9	0.0	\$46,137	3.6	1.3
Total	45-54	2,596	23.9	0.0	\$50,924	3.6	1.2
Total	55-64	1,818	16.8	0.0	\$52,342	3.6	1.1
Total	65-Up	388	3.6	0.0	\$32,779	3.3	1.1
Total	N/A	460	4.2	0.0	\$20,517	2.2	1.1
Total	Total	10,842	100.0	100.0	\$41,697	3.4	1.3

Note: Persons worked any time during the year.

Industry Determination: Based on the industry of employment in which the person made the most money in the year.

N/A: Represents persons with demographic data that are unavailable.

N/A = Nonresidents, individuals for whom demographic data are not available.

Source: Demographics of Persons Working in Wyoming by County, Industry, Age, & Gender, 2000-2018.

Research & Planning, Wyoming Department of Workforce Services.

Prepared by M. Moore, Research & Planning, WY DWS, 7/31/19.

Average Earnings by Age and Gender in the 31,32 &,33 - Manufacturing Industry in 2011

Gender	Age Group	Number	Age Percent	Gender Percent	Average Annual Wage	Average Quarters Worked	Average Annual Employers
Women	00-19	112	4.9	0.0	\$4,643	2.5	1.4
Women	20-24	229	10.1	0.0	\$14,722	3.0	1.6
Women	25-34	422	18.6	0.0	\$22,205	3.2	1.5
Women	35-44	415	18.3	0.0	\$29,230	3.4	1.4
Women	45-54	597	26.4	0.0	\$34,149	3.6	1.2
Women	55-64	386	17.1	0.0	\$31,509	3.6	1.2
Women	65-Up	97	4.3	0.0	\$22,514	3.1	1.1
Women	N/A	5	0.2	0.0	\$57,584	4.0	1.0
Women	Total	2,263	100.0	20.0	\$26,696	3.4	1.3
Men	00-19	283	3.3	0.0	\$7,879	2.6	1.6
Men	20-24	805	9.5	0.0	\$22,874	3.1	1.6
Men	25-34	1,966	23.1	0.0	\$45,155	3.5	1.4
Men	35-44	1,706	20.1	0.0	\$53,710	3.6	1.3
Men	45-54	1,969	23.2	0.0	\$61,564	3.7	1.2
Men	55-64	1,452	17.1	0.0	\$63,015	3.7	1.1
Men	65-Up	312	3.7	0.0	\$41,970	3.3	1.1
Men	N/A	4	0.0	0.0	\$35,131	3.0	1.3
Men	Total	8,497	100.0	75.3	\$50,253	3.5	1.3
N/A	N/A	530	100.0	0.0	\$19,870	2.3	1.1
N/A	Total	530	100.0	4.7	\$19,870	2.3	1.1
Total	00-19	395	3.5	0.0	\$6,961	2.6	1.6
Total	20-24	1,034	9.2	0.0	\$21,069	3.0	1.6
Total	25-34	2,388	21.2	0.0	\$41,099	3.5	1.4
Total	35-44	2,121	18.8	0.0	\$48,920	3.6	1.3
Total	45-54	2,566	22.7	0.0	\$55,186	3.7	1.2
Total	55-64	1,838	16.3	0.0	\$56,398	3.6	1.1
Total	65-Up	409	3.6	0.0	\$37,356	3.2	1.1
Total	N/A	539	4.8	0.0	\$20,333	2.3	1.1
Total	Total	11,290	100.0	100.0	\$44,105	3.4	1.3

Note: Persons worked any time during the year.

Industry Determination: Based on the industry of employment in which the person made the most money in the year.

N/A: Represents persons with demographic data that are unavailable.

N/A = Nonresidents, individuals for whom demographic data are not available.

Source: Demographics of Persons Working in Wyoming by County, Industry, Age, & Gender, 2000-2018.

Research & Planning, Wyoming Department of Workforce Services.

Prepared by M. Moore, Research & Planning, WY DWS, 7/31/19.

Average Earnings by Age and Gender in the 31,32 & 33 - Manufacturing Industry in 2012

Gender	Age Group	Number	Age Percent	Gender Percent	Average Annual Wage	Average Quarters Worked	Average Annual Employers
Women	00-19	111	4.9	0.0	\$4,391	2.4	1.5
Women	20-24	233	10.4	0.0	\$14,167	2.9	1.6
Women	25-34	420	18.7	0.0	\$25,234	3.3	1.5
Women	35-44	412	18.3	0.0	\$30,655	3.5	1.4
Women	45-54	562	25.0	0.0	\$35,047	3.6	1.2
Women	55-64	397	17.6	0.0	\$35,201	3.7	1.2
Women	65-Up	109	4.8	0.0	\$23,294	3.4	1.1
Women	N/A	7	0.3	0.0	\$45,765	3.9	1.4
Women	Total	2,251	100.0	19.6	\$28,230	3.4	1.3
Men	00-19	295	3.4	0.0	\$8,311	2.6	1.5
Men	20-24	854	9.8	0.0	\$25,371	3.2	1.6
Men	25-34	2,040	23.4	0.0	\$46,573	3.5	1.4
Men	35-44	1,735	19.9	0.0	\$53,517	3.6	1.3
Men	45-54	1,911	21.9	0.0	\$63,914	3.7	1.2
Men	55-64	1,539	17.7	0.0	\$62,971	3.7	1.1
Men	65-Up	327	3.8	0.0	\$43,075	3.4	1.1
Men	N/A	6	0.1	0.0	\$28,323	3.0	1.3
Men	Total	8,707	100.0	75.8	\$51,141	3.5	1.3
N/A	N/A	525	100.0	0.0	\$21,370	2.4	1.1
N/A	Total	525	100.0	4.6	\$21,370	2.4	1.1
Total	00-19	406	3.5	0.0	\$7,239	2.5	1.5
Total	20-24	1,087	9.5	0.0	\$22,969	3.1	1.6
Total	25-34	2,460	21.4	0.0	\$42,930	3.5	1.4
Total	35-44	2,147	18.7	0.0	\$49,129	3.6	1.3
Total	45-54	2,473	21.5	0.0	\$57,354	3.7	1.2
Total	55-64	1,936	16.9	0.0	\$57,277	3.7	1.1
Total	65-Up	436	3.8	0.0	\$38,130	3.4	1.1
Total	N/A	538	4.7	0.0	\$21,765	2.4	1.1
Total	Total	11,483	100.0	100.0	\$45,289	3.5	1.3

Note: Persons worked any time during the year.

Industry Determination: Based on the industry of employment in which the person made the most money in the year.

N/A: Represents persons with demographic data that are unavailable.

N/A = Nonresidents, individuals for whom demographic data are not available.

Source: Demographics of Persons Working in Wyoming by County, Industry, Age, & Gender, 2000-2018.

Research & Planning, Wyoming Department of Workforce Services.

Prepared by M. Moore, Research & Planning, WY DWS, 7/31/19.

Average Earnings by Age and Gender in the 31,32 &,33 - Manufacturing Industry in 2013

Gender	Age Group	Number	Age Percent	Gender Percent	Average Annual Wage	Average Quarters Worked	Average Annual Employers
Women	00-19	105	4.5	0.0	\$4,328	2.3	1.4
Women	20-24	257	11.1	0.0	\$15,188	3.1	1.7
Women	25-34	442	19.1	0.0	\$26,522	3.4	1.5
Women	35-44	424	18.3	0.0	\$31,628	3.5	1.4
Women	45-54	555	24.0	0.0	\$35,354	3.6	1.3
Women	55-64	413	17.8	0.0	\$36,886	3.7	1.2
Women	65-Up	113	4.9	0.0	\$23,051	3.5	1.1
Women	N/A	5	0.2	0.0	\$91,958	4.0	1.0
Women	Total	2,314	100.0	19.9	\$29,132	3.4	1.4
Men	00-19	252	2.9	0.0	\$6,400	2.4	1.5
Men	20-24	858	9.8	0.0	\$27,134	3.2	1.6
Men	25-34	2,087	23.9	0.0	\$48,916	3.5	1.4
Men	35-44	1,703	19.5	0.0	\$57,064	3.7	1.3
Men	45-54	1,860	21.3	0.0	\$64,311	3.7	1.2
Men	55-64	1,596	18.3	0.0	\$64,618	3.7	1.1
Men	65-Up	354	4.1	0.0	\$43,624	3.3	1.1
Men	N/A	4	0.0	0.0	\$36,411	3.0	1.0
Men	Total	8,714	100.0	74.8	\$53,075	3.5	1.3
N/A	N/A	627	100.0	0.0	\$18,899	2.2	1.1
N/A	Total	627	100.0	5.4	\$18,899	2.2	1.1
Total	00-19	357	3.1	0.0	\$5,791	2.4	1.5
Total	20-24	1,115	9.6	0.0	\$24,380	3.2	1.6
Total	25-34	2,529	21.7	0.0	\$45,002	3.5	1.4
Total	35-44	2,127	18.2	0.0	\$51,993	3.6	1.3
Total	45-54	2,415	20.7	0.0	\$57,656	3.7	1.2
Total	55-64	2,009	17.2	0.0	\$58,917	3.7	1.1
Total	65-Up	467	4.0	0.0	\$38,646	3.3	1.1
Total	N/A	636	5.5	0.0	\$19,583	2.2	1.1
Total	Total	11,655	100.0	100.0	\$46,483	3.5	1.3

Note: Persons worked any time during the year.

Industry Determination: Based on the industry of employment in which the person made the most money in the year.

N/A: Represents persons with demographic data that are unavailable.

N/A = Nonresidents, individuals for whom demographic data are not available.

Source: Demographics of Persons Working in Wyoming by County, Industry, Age, & Gender, 2000-2018.

Research & Planning, Wyoming Department of Workforce Services.

Prepared by M. Moore, Research & Planning, WY DWS, 7/31/19.

Average Earnings by Age and Gender in the 31,32 &,33 - Manufacturing Industry in 2014

Gender	Age Group	Number	Age Percent	Gender Percent	Average Annual Wage	Average Quarters Worked	Average Annual Employers
Women	00-19	123	5.3	0.0	\$5,014	2.6	1.5
Women	20-24	217	9.4	0.0	\$16,804	3.1	1.7
Women	25-34	472	20.4	0.0	\$27,906	3.4	1.4
Women	35-44	409	17.7	0.0	\$35,441	3.6	1.4
Women	45-54	527	22.8	0.0	\$37,641	3.6	1.3
Women	55-64	437	18.9	0.0	\$39,396	3.7	1.2
Women	65-Up	123	5.3	0.0	\$21,310	3.3	1.1
Women	N/A	6	0.3	0.0	\$53,360	3.5	1.2
Women	Total	2,314	100.0	19.8	\$31,082	3.5	1.4
Men	00-19	229	2.6	0.0	\$7,265	2.6	1.6
Men	20-24	877	9.9	0.0	\$29,207	3.2	1.6
Men	25-34	2,149	24.4	0.0	\$52,661	3.6	1.4
Men	35-44	1,762	20.0	0.0	\$60,959	3.6	1.3
Men	45-54	1,795	20.4	0.0	\$67,094	3.7	1.2
Men	55-64	1,638	18.6	0.0	\$69,832	3.7	1.1
Men	65-Up	365	4.1	0.0	\$45,655	3.3	1.1
Men	N/A	4	0.0	0.0	\$39,429	3.0	1.0
Men	Total	8,819	100.0	75.3	\$56,639	3.6	1.3
N/A	N/A	580	100.0	0.0	\$20,644	2.3	1.1
N/A	Total	580	100.0	5.0	\$20,644	2.3	1.1
Total	00-19	352	3.0	0.0	\$6,478	2.6	1.6
Total	20-24	1,094	9.3	0.0	\$26,747	3.2	1.6
Total	25-34	2,621	22.4	0.0	\$48,203	3.6	1.4
Total	35-44	2,171	18.5	0.0	\$56,151	3.6	1.3
Total	45-54	2,322	19.8	0.0	\$60,409	3.7	1.2
Total	55-64	2,075	17.7	0.0	\$63,422	3.7	1.2
Total	65-Up	488	4.2	0.0	\$39,519	3.3	1.1
Total	N/A	590	5.0	0.0	\$21,104	2.3	1.1
Total	Total	11,713	100.0	100.0	\$49,807	3.5	1.3

Note: Persons worked any time during the year.

Industry Determination: Based on the industry of employment in which the person made the most money in the year.

N/A: Represents persons with demographic data that are unavailable.

N/A = Nonresidents, individuals for whom demographic data are not available.

Source: Demographics of Persons Working in Wyoming by County, Industry, Age, & Gender, 2000-2018.

Research & Planning, Wyoming Department of Workforce Services.

Prepared by M. Moore, Research & Planning, WY DWS, 7/31/19.

Average Earnings by Age and Gender in the 31,32 &,33 - Manufacturing Industry in 2015

Gender	Age Group	Number	Age Percent	Gender Percent	Average Annual Wage	Average Quarters Worked	Average Annual Employers
Women	00-19	123	5.3	0.0	\$6,087	2.7	1.5
Women	20-24	196	8.5	0.0	\$16,175	3.0	1.7
Women	25-34	485	20.9	0.0	\$30,239	3.3	1.4
Women	35-44	454	19.6	0.0	\$35,559	3.5	1.3
Women	45-54	482	20.8	0.0	\$41,094	3.6	1.2
Women	55-64	445	19.2	0.0	\$39,578	3.7	1.2
Women	65-Up	128	5.5	0.0	\$20,448	3.4	1.1
Women	N/A	5	0.2	0.0	\$79,266	4.0	1.0
Women	Total	2,318	100.0	19.9	\$32,425	3.4	1.3
Men	00-19	208	2.4	0.0	\$6,826	2.6	1.5
Men	20-24	807	9.3	0.0	\$30,138	3.2	1.6
Men	25-34	2,162	24.8	0.0	\$54,427	3.6	1.4
Men	35-44	1,846	21.2	0.0	\$62,629	3.7	1.3
Men	45-54	1,737	19.9	0.0	\$68,737	3.7	1.2
Men	55-64	1,601	18.4	0.0	\$74,314	3.7	1.1
Men	65-Up	351	4.0	0.0	\$48,693	3.4	1.1
Men	N/A	4	0.0	0.0	\$25,741	2.5	1.0
Men	Total	8,716	100.0	74.9	\$59,040	3.6	1.3
N/A	N/A	605	100.0	0.0	\$22,022	2.3	1.1
N/A	Total	605	100.0	5.2	\$22,022	2.3	1.1
Total	00-19	331	2.8	0.0	\$6,552	2.6	1.5
Total	20-24	1,003	8.6	0.0	\$27,409	3.2	1.6
Total	25-34	2,647	22.7	0.0	\$49,995	3.6	1.4
Total	35-44	2,300	19.8	0.0	\$57,285	3.6	1.3
Total	45-54	2,219	19.1	0.0	\$62,732	3.7	1.2
Total	55-64	2,046	17.6	0.0	\$66,759	3.7	1.1
Total	65-Up	479	4.1	0.0	\$41,145	3.4	1.1
Total	N/A	614	5.3	0.0	\$22,513	2.3	1.1
Total	Total	11,639	100.0	100.0	\$51,815	3.5	1.3

Note: Persons worked any time during the year.

Industry Determination: Based on the industry of employment in which the person made the most money in the year.

N/A: Represents persons with demographic data that are unavailable.

N/A = Nonresidents, individuals for whom demographic data are not available.

Source: Demographics of Persons Working in Wyoming by County, Industry, Age, & Gender, 2000-2018.

Research & Planning, Wyoming Department of Workforce Services.

Prepared by M. Moore, Research & Planning, WY DWS, 7/31/19.

Average Earnings by Age and Gender in the 31,32 & 33 - Manufacturing Industry in 2016

Gender	Age Group	Number	Age Percent	Gender Percent	Average Annual Wage	Average Quarters Worked	Average Annual Employers
Women	00-19	113	5.2	0.0	\$4,286	2.4	1.4
Women	20-24	191	8.8	0.0	\$16,328	3.0	1.5
Women	25-34	441	20.4	0.0	\$33,072	3.5	1.4
Women	35-44	417	19.2	0.0	\$37,548	3.5	1.3
Women	45-54	428	19.8	0.0	\$42,243	3.7	1.2
Women	55-64	441	20.4	0.0	\$39,996	3.7	1.2
Women	65-Up	128	5.9	0.0	\$21,264	3.3	1.1
Women	N/A	8	0.4	0.0	\$46,094	3.1	1.0
Women	Total	2,167	100.0	19.7	\$33,527	3.5	1.3
Men	00-19	195	2.4	0.0	\$7,154	2.5	1.5
Men	20-24	658	8.0	0.0	\$28,660	3.2	1.5
Men	25-34	2,010	24.3	0.0	\$55,540	3.6	1.3
Men	35-44	1,790	21.7	0.0	\$63,274	3.7	1.2
Men	45-54	1,657	20.1	0.0	\$68,639	3.7	1.2
Men	55-64	1,592	19.3	0.0	\$73,979	3.8	1.1
Men	65-Up	357	4.3	0.0	\$51,803	3.3	1.1
Men	N/A	3	0.0	0.0	\$49,764	3.3	1.3
Men	Total	8,262	100.0	75.2	\$59,949	3.6	1.2
N/A	N/A	557	100.0	0.0	\$25,058	2.4	1.1
N/A	Total	557	100.0	5.1	\$25,058	2.4	1.1
Total	00-19	308	2.8	0.0	\$6,102	2.5	1.5
Total	20-24	849	7.7	0.0	\$25,885	3.2	1.5
Total	25-34	2,451	22.3	0.0	\$51,498	3.6	1.3
Total	35-44	2,207	20.1	0.0	\$58,413	3.6	1.2
Total	45-54	2,085	19.0	0.0	\$63,220	3.7	1.2
Total	55-64	2,033	18.5	0.0	\$66,607	3.7	1.1
Total	65-Up	485	4.4	0.0	\$43,743	3.3	1.1
Total	N/A	568	5.2	0.0	\$25,485	2.4	1.1
Total	Total	10,986	100.0	100.0	\$52,968	3.5	1.2

Note: Persons worked any time during the year.

Industry Determination: Based on the industry of employment in which the person made the most money in the year.

N/A: Represents persons with demographic data that are unavailable.

N/A = Nonresidents, individuals for whom demographic data are not available.

Source: Demographics of Persons Working in Wyoming by County, Industry, Age, & Gender, 2000-2018.

Research & Planning, Wyoming Department of Workforce Services.

Prepared by M. Moore, Research & Planning, WY DWS, 7/31/19.

Average Earnings by Age and Gender in the 31,32 &,33 - Manufacturing Industry in 2017

Gender	Age Group	Number	Age Percent	Gender Percent	Average Annual Wage	Average Quarters Worked	Average Annual Employers
Women	00-19	111	5.0	0.0	\$5,815	2.6	1.5
Women	20-24	221	10.0	0.0	\$15,067	3.0	1.6
Women	25-34	453	20.5	0.0	\$33,969	3.5	1.4
Women	35-44	441	19.9	0.0	\$39,115	3.6	1.4
Women	45-54	416	18.8	0.0	\$42,227	3.7	1.2
Women	55-64	435	19.7	0.0	\$42,546	3.7	1.2
Women	65-Up	129	5.8	0.0	\$25,149	3.5	1.1
Women	N/A	7	0.3	0.0	\$64,428	3.1	1.0
Women	Total	2,213	100.0	20.0	\$34,515	3.5	1.3
Men	00-19	201	2.4	0.0	\$8,143	2.5	1.5
Men	20-24	641	7.8	0.0	\$29,080	3.2	1.6
Men	25-34	2,034	24.8	0.0	\$55,818	3.6	1.3
Men	35-44	1,797	21.9	0.0	\$66,839	3.7	1.3
Men	45-54	1,575	19.2	0.0	\$73,452	3.7	1.2
Men	55-64	1,589	19.3	0.0	\$75,752	3.7	1.1
Men	65-Up	375	4.6	0.0	\$52,331	3.3	1.1
Men	N/A	3	0.0	0.0	\$47,169	3.0	1.0
Men	Total	8,215	100.0	74.2	\$62,050	3.6	1.3
N/A	N/A	638	100.0	0.0	\$24,575	2.4	1.2
N/A	Total	638	100.0	5.8	\$24,575	2.4	1.2
Total	00-19	312	2.8	0.0	\$7,315	2.5	1.5
Total	20-24	862	7.8	0.0	\$25,488	3.2	1.6
Total	25-34	2,487	22.5	0.0	\$51,838	3.6	1.4
Total	35-44	2,238	20.2	0.0	\$61,376	3.7	1.3
Total	45-54	1,991	18.0	0.0	\$66,928	3.7	1.2
Total	55-64	2,024	18.3	0.0	\$68,615	3.7	1.1
Total	65-Up	504	4.6	0.0	\$45,374	3.3	1.1
Total	N/A	648	5.9	0.0	\$25,110	2.4	1.2
Total	Total	11,066	100.0	100.0	\$54,383	3.5	1.3

Note: Persons worked any time during the year.

Industry Determination: Based on the industry of employment in which the person made the most money in the year.

N/A: Represents persons with demographic data that are unavailable.

N/A = Nonresidents, individuals for whom demographic data are not available.

Source: Demographics of Persons Working in Wyoming by County, Industry, Age, & Gender, 2000-2018.

Research & Planning, Wyoming Department of Workforce Services.

Prepared by M. Moore, Research & Planning, WY DWS, 7/31/19.

Average Earnings by Age and Gender in the 31,32 &,33 - Manufacturing Industry in 2018

Gender	Age Group	Number	Age Percent	Gender Percent	Average Annual Wage	Average Quarters Worked	Average Annual Employers
Women	00-19	122	5.3	0.0	\$5,961	2.5	1.5
Women	20-24	254	11.0	0.0	\$16,656	3.1	1.7
Women	25-34	473	20.5	0.0	\$34,053	3.5	1.4
Women	35-44	456	19.8	0.0	\$39,665	3.5	1.4
Women	45-54	415	18.0	0.0	\$41,897	3.6	1.3
Women	55-64	433	18.8	0.0	\$45,147	3.7	1.2
Women	65-Up	142	6.2	0.0	\$27,867	3.4	1.1
Women	N/A	9	0.4	0.0	\$32,751	2.9	1.1
Women	Total	2,304	100.0	19.9	\$34,870	3.5	1.4
Men	00-19	228	2.7	0.0	\$8,692	2.5	1.6
Men	20-24	687	8.1	0.0	\$28,916	3.2	1.6
Men	25-34	2,067	24.3	0.0	\$57,706	3.6	1.3
Men	35-44	1,945	22.9	0.0	\$69,705	3.7	1.3
Men	45-54	1,582	18.6	0.0	\$74,733	3.7	1.2
Men	55-64	1,594	18.8	0.0	\$75,486	3.7	1.1
Men	65-Up	386	4.5	0.0	\$53,025	3.4	1.1
Men	N/A	3	0.0	0.0	\$53,616	3.3	1.3
Men	Total	8,492	100.0	73.5	\$63,104	3.6	1.3
N/A	N/A	753	100.0	0.0	\$29,864	2.4	1.2
N/A	Total	753	100.0	6.5	\$29,864	2.4	1.2
Total	00-19	350	3.0	0.0	\$7,740	2.5	1.6
Total	20-24	941	8.1	0.0	\$25,607	3.2	1.6
Total	25-34	2,540	22.0	0.0	\$53,302	3.6	1.4
Total	35-44	2,401	20.8	0.0	\$64,000	3.7	1.3
Total	45-54	1,997	17.3	0.0	\$67,909	3.7	1.2
Total	55-64	2,027	17.6	0.0	\$69,005	3.7	1.2
Total	65-Up	528	4.6	0.0	\$46,259	3.4	1.1
Total	N/A	765	6.6	0.0	\$29,991	2.4	1.2
Total	Total	11,549	100.0	100.0	\$55,304	3.5	1.3

Note: Persons worked any time during the year.

Industry Determination: Based on the industry of employment in which the person made the most money in the year.

N/A: Represents persons with demographic data that are unavailable.

N/A = Nonresidents, individuals for whom demographic data are not available.

Source: Demographics of Persons Working in Wyoming by County, Industry, Age, & Gender, 2000-2018.

Research & Planning, Wyoming Department of Workforce Services.

Prepared by M. Moore, Research & Planning, WY DWS, 7/31/19.