

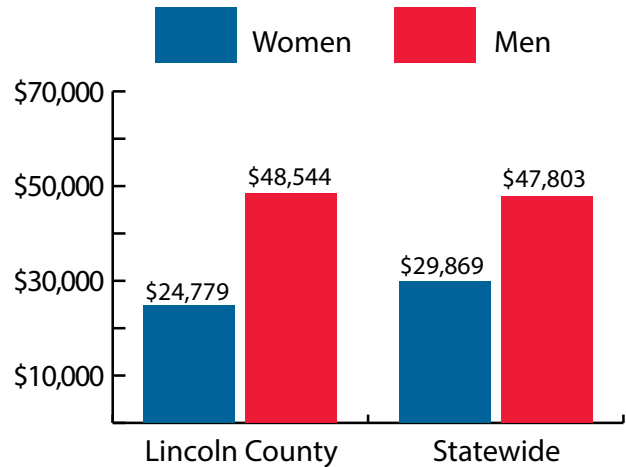
Lincoln County at a Glance, 2018

Demographics of Persons Working in Wyoming by County, Industry, Age, & Gender, 2000-2018

Table: Total Number of Persons Working in Lincoln County, WY, at Any Time by Gender and Age, 2017-2018

Gender	2017	2018	Change	
			N	%
Women	3,314	3,238	-76	-2.3
Men	3,735	3,615	-120	-3.2
Nonresidents	994	1,015	21	2.1
Total	8,043	7,868	-175	-2.2

Age	2017	2018	Change	
			N	%
00-19	670	625	-45	-6.7
20-24	599	578	-21	-3.5
25-34	1,290	1,233	-57	-4.4
35-44	1,432	1,448	16	1.1
45-54	1,280	1,200	-80	-6.3
55-64	1,286	1,246	-40	-3.1
65-Up	469	497	28	6.0
Nonresidents	1,017	1,041	24	2.4
Total	8,043	7,868	-175	-2.2



Women's Wages as % of Men's Wages

Lincoln County: 51.0%

Total, Statewide: 62.5%

Figure: Average Annual Wages by Gender, 2018

Total = 7,868

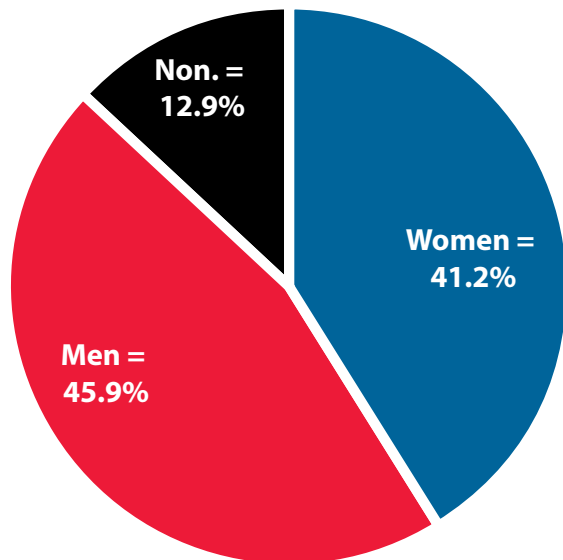


Figure: Persons Working by Gender, 2018

Total = 7,868

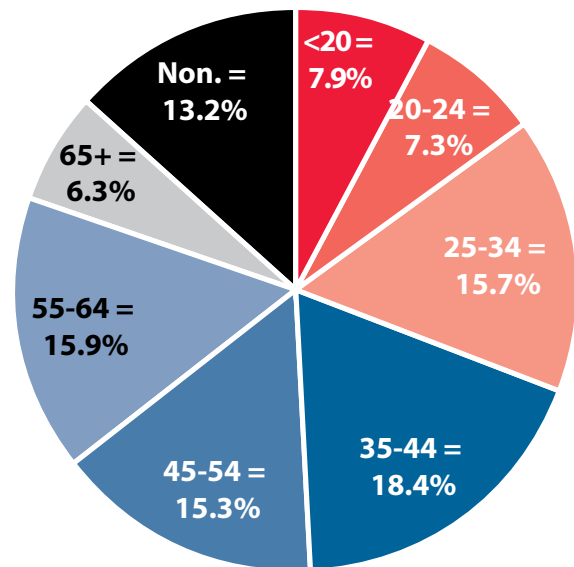


Figure: Persons Working by Age, 2018

Note: Nonresidents are individuals for whom demographic data are not available.

Source: Demographics of Persons Working in Wyoming by County, Industry, Age, & Gender, 2000-2018. Research & Planning, Wyoming Department of Workforce Services. Prepared by M. Moore, Research & Planning, WY DWS, 7/31/19.

Persons Working in Lincoln County by Gender and Age, 2000-2018

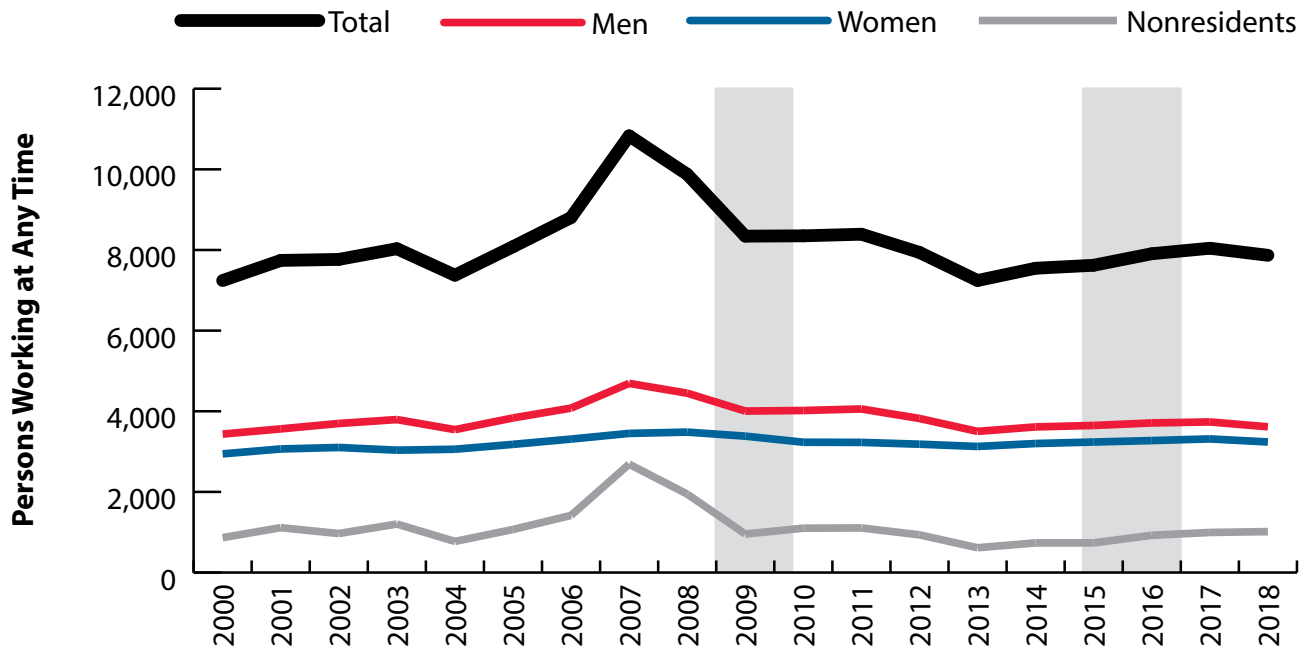


Figure: Persons Working in Lincoln County at Any Time by Gender, 2000-2018

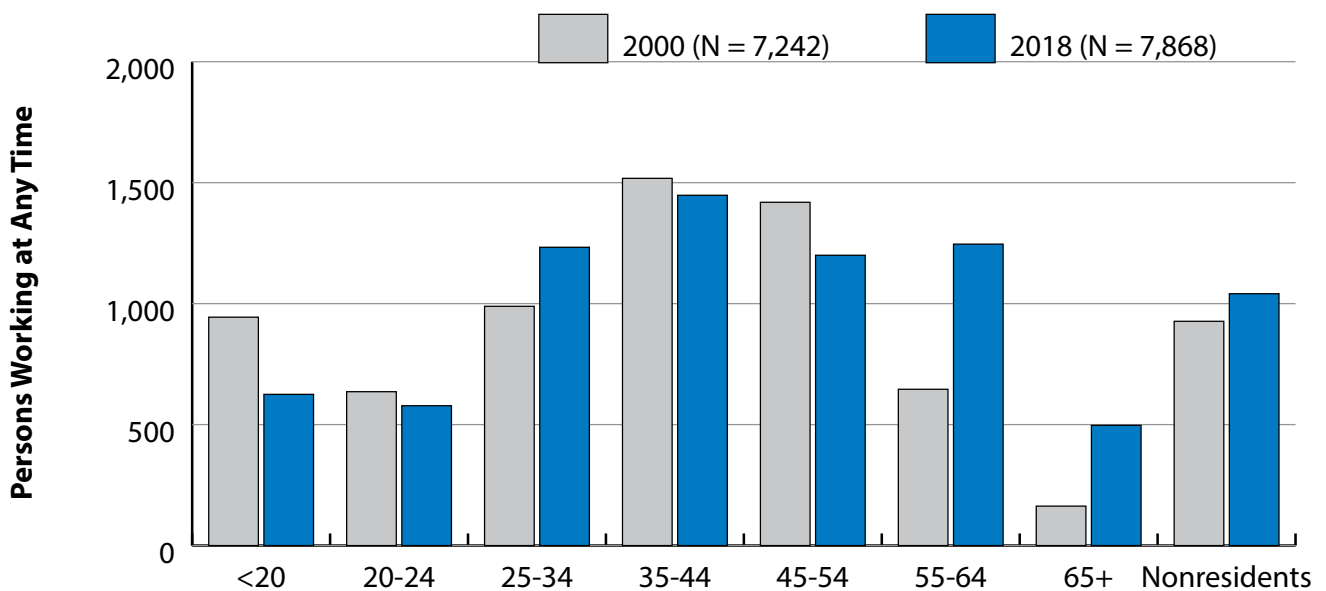


Figure: Persons Working in Lincoln County at Any Time by Age, 2000-2018

Note: Nonresidents are individuals for whom demographic data are not available.
 Shaded areas indicate periods of economic downturn: 2009Q1-2010Q1 and 2015Q2-2016Q4.
 Source: Demographics of Persons Working in Wyoming by County, Industry, Age, & Gender, 2000-2018. Research & Planning, Wyoming Department of Workforce Services. Prepared by M. Moore, Research & Planning, WY DWS, 7/31/19.

Average Earnings by Age and Gender with Place of Work in Lincoln County in 2000

Gender	Age Group	Number	Age Percent	Gender Percent	Average Annual Wage	Average Quarters Worked	Average Annual Employers
Women	00-19	469	15.9	0.0	\$2,690	2.6	1.5
Women	20-24	293	10.0	0.0	\$6,208	2.7	1.6
Women	25-34	453	15.4	0.0	\$11,059	3.1	1.5
Women	35-44	708	24.1	0.0	\$14,309	3.4	1.4
Women	45-54	647	22.0	0.0	\$17,451	3.5	1.3
Women	55-64	271	9.2	0.0	\$15,632	3.5	1.3
Women	65-Up	68	2.3	0.0	\$11,368	3.1	1.1
Women	N/A	34	1.2	0.0	\$3,892	2.3	1.2
Women	Total	2,943	100.0	40.6	\$11,775	3.2	1.4
Men	00-19	475	13.8	0.0	\$3,509	2.5	1.5
Men	20-24	343	10.0	0.0	\$11,957	2.8	1.6
Men	25-34	536	15.6	0.0	\$23,778	3.3	1.6
Men	35-44	810	23.6	0.0	\$33,752	3.4	1.4
Men	45-54	772	22.5	0.0	\$38,192	3.5	1.3
Men	55-64	375	10.9	0.0	\$31,944	3.4	1.2
Men	65-Up	95	2.8	0.0	\$13,319	2.8	1.1
Men	N/A	28	0.8	0.0	\$18,720	2.7	1.3
Men	Total	3,434	100.0	47.4	\$25,948	3.2	1.4
N/A	N/A	865	100.0	0.0	\$7,324	1.7	1.1
N/A	Total	865	100.0	11.9	\$7,324	1.7	1.1
Total	00-19	944	13.0	0.0	\$3,102	2.6	1.5
Total	20-24	636	8.8	0.0	\$9,308	2.8	1.6
Total	25-34	989	13.7	0.0	\$17,952	3.2	1.5
Total	35-44	1,518	21.0	0.0	\$24,684	3.4	1.4
Total	45-54	1,419	19.6	0.0	\$28,735	3.5	1.3
Total	55-64	646	8.9	0.0	\$25,101	3.4	1.2
Total	65-Up	163	2.3	0.0	\$12,505	2.9	1.1
Total	N/A	927	12.8	0.0	\$7,543	1.8	1.1
Total	Total	7,242	100.0	100.0	\$17,964	3.0	1.4

Note: Persons worked at any time during the year.

County Determination: Based on county of employment in which the person made the most money in the year.

N/A: Represents persons with demographic data that is unavailable.

N/A = Nonresidents, individuals for whom demographic data are not available.

Source: Demographics of Persons Working in Wyoming by County, Industry, Age, & Gender, 2000-2018.

Research & Planning, Wyoming Department of Workforce Services.

Prepared by M. Moore, Research & Planning, WY DWS, 7/31/19.

Average Earnings by Age and Gender with Place of Work in Lincoln County in 2001

Gender	Age Group	Number	Age Percent	Gender Percent	Average Annual Wage	Average Quarters Worked	Average Annual Employers
Women	00-19	492	16.1	0.0	\$2,746	2.5	1.4
Women	20-24	321	10.5	0.0	\$6,200	2.7	1.7
Women	25-34	446	14.6	0.0	\$11,437	3.1	1.6
Women	35-44	717	23.4	0.0	\$14,409	3.4	1.5
Women	45-54	677	22.1	0.0	\$18,886	3.5	1.4
Women	55-64	309	10.1	0.0	\$17,557	3.4	1.3
Women	65-Up	71	2.3	0.0	\$13,098	3.3	1.1
Women	N/A	32	1.0	0.0	\$5,250	2.3	1.3
Women	Total	3,065	100.0	39.6	\$12,425	3.1	1.4
Men	00-19	481	13.5	0.0	\$3,874	2.5	1.5
Men	20-24	397	11.1	0.0	\$12,891	2.8	1.7
Men	25-34	574	16.1	0.0	\$23,767	3.1	1.5
Men	35-44	789	22.1	0.0	\$33,875	3.3	1.3
Men	45-54	804	22.6	0.0	\$42,509	3.4	1.2
Men	55-64	392	11.0	0.0	\$33,850	3.3	1.2
Men	65-Up	108	3.0	0.0	\$13,893	2.7	1.1
Men	N/A	18	0.5	0.0	\$26,230	2.5	1.2
Men	Total	3,563	100.0	46.0	\$27,160	3.1	1.4
N/A	N/A	1,113	100.0	0.0	\$8,136	1.5	1.1
N/A	Total	1,113	100.0	14.4	\$8,136	1.5	1.1
Total	00-19	973	12.6	0.0	\$3,304	2.5	1.5
Total	20-24	718	9.3	0.0	\$9,899	2.8	1.7
Total	25-34	1,020	13.2	0.0	\$18,376	3.1	1.5
Total	35-44	1,506	19.5	0.0	\$24,607	3.3	1.4
Total	45-54	1,481	19.1	0.0	\$31,710	3.5	1.3
Total	55-64	701	9.1	0.0	\$26,668	3.4	1.2
Total	65-Up	179	2.3	0.0	\$13,578	2.9	1.1
Total	N/A	1,163	15.0	0.0	\$8,337	1.6	1.1
Total	Total	7,741	100.0	100.0	\$18,590	2.9	1.4

Note: Persons worked at any time during the year.

County Determination: Based on county of employment in which the person made the most money in the year.

N/A: Represents persons with demographic data that is unavailable.

N/A = Nonresidents, individuals for whom demographic data are not available.

Source: Demographics of Persons Working in Wyoming by County, Industry, Age, & Gender, 2000-2018.

Research & Planning, Wyoming Department of Workforce Services.

Prepared by M. Moore, Research & Planning, WY DWS, 7/31/19.

Average Earnings by Age and Gender with Place of Work in Lincoln County in 2002

Gender	Age Group	Number	Age Percent	Gender Percent	Average Annual Wage	Average Quarters Worked	Average Annual Employers
Women	00-19	476	15.3	0.0	\$2,777	2.5	1.6
Women	20-24	318	10.3	0.0	\$6,297	2.7	1.7
Women	25-34	469	15.1	0.0	\$11,976	3.1	1.5
Women	35-44	693	22.3	0.0	\$15,687	3.4	1.4
Women	45-54	690	22.2	0.0	\$18,430	3.5	1.3
Women	55-64	363	11.7	0.0	\$16,847	3.4	1.2
Women	65-Up	70	2.3	0.0	\$12,475	3.4	1.1
Women	N/A	23	0.7	0.0	\$6,080	2.5	1.3
Women	Total	3,102	100.0	39.9	\$12,785	3.2	1.4
Men	00-19	488	13.2	0.0	\$3,489	2.4	1.4
Men	20-24	424	11.5	0.0	\$13,073	2.8	1.7
Men	25-34	632	17.1	0.0	\$25,312	3.3	1.5
Men	35-44	778	21.0	0.0	\$35,028	3.4	1.4
Men	45-54	817	22.1	0.0	\$42,645	3.5	1.3
Men	55-64	424	11.5	0.0	\$32,564	3.3	1.3
Men	65-Up	118	3.2	0.0	\$15,336	2.8	1.2
Men	N/A	16	0.4	0.0	\$23,818	2.5	1.3
Men	Total	3,697	100.0	47.6	\$27,410	3.1	1.4
N/A	N/A	967	100.0	0.0	\$9,003	1.6	1.1
N/A	Total	967	100.0	12.5	\$9,003	1.6	1.1
Total	00-19	964	12.4	0.0	\$3,137	2.4	1.5
Total	20-24	742	9.6	0.0	\$10,169	2.7	1.7
Total	25-34	1,101	14.2	0.0	\$19,631	3.2	1.5
Total	35-44	1,471	18.9	0.0	\$25,917	3.4	1.4
Total	45-54	1,507	19.4	0.0	\$31,558	3.5	1.3
Total	55-64	787	10.1	0.0	\$25,315	3.3	1.2
Total	65-Up	188	2.4	0.0	\$14,271	3.0	1.2
Total	N/A	1,006	13.0	0.0	\$9,171	1.7	1.1
Total	Total	7,766	100.0	100.0	\$19,276	3.0	1.4

Note: Persons worked at any time during the year.

County Determination: Based on county of employment in which the person made the most money in the year.

N/A: Represents persons with demographic data that is unavailable.

N/A = Nonresidents, individuals for whom demographic data are not available.

Source: Demographics of Persons Working in Wyoming by County, Industry, Age, & Gender, 2000-2018.

Research & Planning, Wyoming Department of Workforce Services.

Prepared by M. Moore, Research & Planning, WY DWS, 7/31/19.

Average Earnings by Age and Gender with Place of Work in Lincoln County in 2003

Gender	Age Group	Number	Age Percent	Gender Percent	Average Annual Wage	Average Quarters Worked	Average Annual Employers
Women	00-19	427	14.1	0.0	\$3,026	2.5	1.6
Women	20-24	292	9.6	0.0	\$6,641	2.7	1.6
Women	25-34	474	15.6	0.0	\$11,838	3.1	1.5
Women	35-44	625	20.6	0.0	\$15,894	3.3	1.3
Women	45-54	722	23.8	0.0	\$19,136	3.4	1.3
Women	55-64	376	12.4	0.0	\$16,896	3.4	1.2
Women	65-Up	92	3.0	0.0	\$11,760	3.0	1.1
Women	N/A	27	0.9	0.0	\$4,596	2.4	1.4
Women	Total	3,035	100.0	37.8	\$13,229	3.1	1.4
Men	00-19	435	11.5	0.0	\$3,757	2.5	1.4
Men	20-24	443	11.7	0.0	\$13,041	2.8	1.6
Men	25-34	668	17.6	0.0	\$27,072	3.2	1.4
Men	35-44	739	19.5	0.0	\$33,556	3.3	1.3
Men	45-54	905	23.9	0.0	\$40,625	3.4	1.3
Men	55-64	468	12.3	0.0	\$36,303	3.3	1.3
Men	65-Up	118	3.1	0.0	\$15,192	2.9	1.2
Men	N/A	18	0.5	0.0	\$19,717	2.5	1.0
Men	Total	3,794	100.0	47.2	\$27,990	3.1	1.4
N/A	N/A	1,203	100.0	0.0	\$11,167	1.7	1.1
N/A	Total	1,203	100.0	15.0	\$11,167	1.7	1.1
Total	00-19	862	10.7	0.0	\$3,395	2.5	1.5
Total	20-24	735	9.2	0.0	\$10,498	2.8	1.6
Total	25-34	1,142	14.2	0.0	\$20,749	3.1	1.5
Total	35-44	1,364	17.0	0.0	\$25,463	3.3	1.3
Total	45-54	1,627	20.3	0.0	\$31,089	3.4	1.3
Total	55-64	844	10.5	0.0	\$27,657	3.4	1.2
Total	65-Up	210	2.6	0.0	\$13,688	3.0	1.1
Total	N/A	1,248	15.5	0.0	\$11,148	1.7	1.1
Total	Total	8,032	100.0	100.0	\$19,893	2.9	1.3

Note: Persons worked at any time during the year.

County Determination: Based on county of employment in which the person made the most money in the year.

N/A: Represents persons with demographic data that is unavailable.

N/A = Nonresidents, individuals for whom demographic data are not available.

Source: Demographics of Persons Working in Wyoming by County, Industry, Age, & Gender, 2000-2018.

Research & Planning, Wyoming Department of Workforce Services.

Prepared by M. Moore, Research & Planning, WY DWS, 7/31/19.

Average Earnings by Age and Gender with Place of Work in Lincoln County in 2004

Gender	Age Group	Number	Age Percent	Gender Percent	Average Annual Wage	Average Quarters Worked	Average Annual Employers
Women	00-19	439	14.4	0.0	\$2,934	2.6	1.5
Women	20-24	307	10.0	0.0	\$7,920	2.9	1.7
Women	25-34	495	16.2	0.0	\$12,464	3.1	1.4
Women	35-44	586	19.2	0.0	\$16,908	3.4	1.4
Women	45-54	723	23.6	0.0	\$19,830	3.6	1.3
Women	55-64	393	12.9	0.0	\$17,843	3.5	1.2
Women	65-Up	96	3.1	0.0	\$13,171	3.2	1.1
Women	N/A	19	0.6	0.0	\$5,540	2.2	1.2
Women	Total	3,058	100.0	41.5	\$13,903	3.2	1.4
Men	00-19	434	12.2	0.0	\$3,913	2.5	1.4
Men	20-24	400	11.3	0.0	\$14,100	2.9	1.6
Men	25-34	664	18.7	0.0	\$26,490	3.2	1.4
Men	35-44	647	18.3	0.0	\$36,054	3.4	1.3
Men	45-54	822	23.2	0.0	\$45,692	3.6	1.2
Men	55-64	457	12.9	0.0	\$39,201	3.5	1.2
Men	65-Up	109	3.1	0.0	\$14,332	3.0	1.1
Men	N/A	11	0.3	0.0	\$31,444	3.5	1.3
Men	Total	3,544	100.0	48.1	\$29,807	3.2	1.3
N/A	N/A	772	100.0	0.0	\$8,483	1.8	1.1
N/A	Total	772	100.0	10.5	\$8,483	1.8	1.1
Total	00-19	873	11.8	0.0	\$3,421	2.6	1.5
Total	20-24	707	9.6	0.0	\$11,416	2.9	1.6
Total	25-34	1,159	15.7	0.0	\$20,500	3.1	1.4
Total	35-44	1,233	16.7	0.0	\$26,954	3.4	1.3
Total	45-54	1,545	21.0	0.0	\$33,590	3.6	1.3
Total	55-64	850	11.5	0.0	\$29,326	3.5	1.2
Total	65-Up	205	2.8	0.0	\$13,788	3.1	1.1
Total	N/A	802	10.9	0.0	\$8,728	1.8	1.1
Total	Total	7,374	100.0	100.0	\$20,979	3.1	1.3

Note: Persons worked at any time during the year.

County Determination: Based on county of employment in which the person made the most money in the year.

N/A: Represents persons with demographic data that is unavailable.

N/A = Nonresidents, individuals for whom demographic data are not available.

Source: Demographics of Persons Working in Wyoming by County, Industry, Age, & Gender, 2000-2018.

Research & Planning, Wyoming Department of Workforce Services.

Prepared by M. Moore, Research & Planning, WY DWS, 7/31/19.

Average Earnings by Age and Gender with Place of Work in Lincoln County in 2005

Gender	Age Group	Number	Age Percent	Gender Percent	Average Annual Wage	Average Quarters Worked	Average Annual Employers
Women	00-19	468	14.7	0.0	\$2,955	2.6	1.6
Women	20-24	316	9.9	0.0	\$8,277	2.9	1.8
Women	25-34	512	16.1	0.0	\$12,604	3.2	1.5
Women	35-44	592	18.6	0.0	\$18,858	3.4	1.4
Women	45-54	752	23.7	0.0	\$21,214	3.6	1.3
Women	55-64	423	13.3	0.0	\$20,796	3.5	1.2
Women	65-Up	104	3.3	0.0	\$12,282	3.0	1.2
Women	N/A	12	0.4	0.0	\$11,232	3.0	1.6
Women	Total	3,179	100.0	39.3	\$15,029	3.2	1.4
Men	00-19	452	11.8	0.0	\$4,440	2.5	1.5
Men	20-24	397	10.4	0.0	\$14,995	2.8	1.5
Men	25-34	727	19.0	0.0	\$27,671	3.2	1.5
Men	35-44	705	18.4	0.0	\$36,651	3.3	1.4
Men	45-54	899	23.4	0.0	\$46,749	3.5	1.3
Men	55-64	518	13.5	0.0	\$39,143	3.2	1.2
Men	65-Up	119	3.1	0.0	\$16,611	3.1	1.2
Men	N/A	17	0.4	0.0	\$21,423	2.6	1.1
Men	Total	3,834	100.0	47.4	\$30,923	3.1	1.4
N/A	N/A	1,068	100.0	0.0	\$10,764	1.7	1.1
N/A	Total	1,068	100.0	13.2	\$10,764	1.7	1.1
Total	00-19	920	11.4	0.0	\$3,685	2.5	1.6
Total	20-24	713	8.8	0.0	\$12,018	2.9	1.6
Total	25-34	1,239	15.3	0.0	\$21,445	3.2	1.5
Total	35-44	1,297	16.0	0.0	\$28,530	3.3	1.4
Total	45-54	1,651	20.4	0.0	\$35,118	3.5	1.3
Total	55-64	941	11.6	0.0	\$30,896	3.4	1.2
Total	65-Up	223	2.8	0.0	\$14,592	3.0	1.2
Total	N/A	1,097	13.6	0.0	\$10,934	1.8	1.1
Total	Total	8,081	100.0	100.0	\$22,006	3.0	1.4

Note: Persons worked at any time during the year.

County Determination: Based on county of employment in which the person made the most money in the year.

N/A: Represents persons with demographic data that is unavailable.

N/A = Nonresidents, individuals for whom demographic data are not available.

Source: Demographics of Persons Working in Wyoming by County, Industry, Age, & Gender, 2000-2018.

Research & Planning, Wyoming Department of Workforce Services.

Prepared by M. Moore, Research & Planning, WY DWS, 7/31/19.

Average Earnings by Age and Gender with Place of Work in Lincoln County in 2006

Gender	Age Group	Number	Age Percent	Gender Percent	Average Annual Wage	Average Quarters Worked	Average Annual Employers
Women	00-19	471	14.2	0.0	\$3,223	2.7	1.7
Women	20-24	326	9.8	0.0	\$8,465	2.8	1.8
Women	25-34	562	17.0	0.0	\$13,756	3.2	1.5
Women	35-44	597	18.0	0.0	\$20,009	3.4	1.4
Women	45-54	792	23.9	0.0	\$22,643	3.5	1.3
Women	55-64	442	13.4	0.0	\$22,288	3.5	1.2
Women	65-Up	109	3.3	0.0	\$13,455	3.1	1.1
Women	N/A	11	0.3	0.0	\$15,230	3.1	1.8
Women	Total	3,310	100.0	37.6	\$16,125	3.2	1.4
Men	00-19	490	12.0	0.0	\$5,111	2.5	1.5
Men	20-24	434	10.6	0.0	\$16,686	2.8	1.7
Men	25-34	802	19.7	0.0	\$31,858	3.2	1.5
Men	35-44	725	17.8	0.0	\$39,318	3.3	1.4
Men	45-54	894	21.9	0.0	\$50,172	3.5	1.3
Men	55-64	587	14.4	0.0	\$42,091	3.4	1.3
Men	65-Up	134	3.3	0.0	\$14,909	2.9	1.2
Men	N/A	12	0.3	0.0	\$33,870	2.6	1.1
Men	Total	4,078	100.0	46.3	\$33,293	3.2	1.4
N/A	N/A	1,417	100.0	0.0	\$14,821	1.9	1.2
N/A	Total	1,417	100.0	16.1	\$14,821	1.9	1.2
Total	00-19	961	10.9	0.0	\$4,186	2.6	1.6
Total	20-24	760	8.6	0.0	\$13,160	2.8	1.7
Total	25-34	1,364	15.5	0.0	\$24,400	3.2	1.5
Total	35-44	1,322	15.0	0.0	\$30,599	3.3	1.4
Total	45-54	1,686	19.1	0.0	\$37,240	3.5	1.3
Total	55-64	1,029	11.7	0.0	\$33,585	3.4	1.2
Total	65-Up	243	2.8	0.0	\$14,257	3.0	1.1
Total	N/A	1,440	16.4	0.0	\$14,983	1.9	1.2
Total	Total	8,805	100.0	100.0	\$23,866	3.0	1.4

Note: Persons worked at any time during the year.

County Determination: Based on county of employment in which the person made the most money in the year.

N/A: Represents persons with demographic data that is unavailable.

N/A = Nonresidents, individuals for whom demographic data are not available.

Source: Demographics of Persons Working in Wyoming by County, Industry, Age, & Gender, 2000-2018.

Research & Planning, Wyoming Department of Workforce Services.

Prepared by M. Moore, Research & Planning, WY DWS, 7/31/19.

Average Earnings by Age and Gender with Place of Work in Lincoln County in 2007

Gender	Age Group	Number	Age Percent	Gender Percent	Average Annual Wage	Average Quarters Worked	Average Annual Employers
Women	00-19	458	13.3	0.0	\$3,985	2.6	1.5
Women	20-24	369	10.7	0.0	\$9,901	2.9	1.7
Women	25-34	601	17.4	0.0	\$15,504	3.2	1.5
Women	35-44	602	17.4	0.0	\$22,557	3.4	1.4
Women	45-54	786	22.8	0.0	\$25,884	3.6	1.3
Women	55-64	509	14.7	0.0	\$23,587	3.5	1.2
Women	65-Up	114	3.3	0.0	\$17,120	3.3	1.1
Women	N/A	12	0.3	0.0	\$12,960	3.1	1.5
Women	Total	3,451	100.0	31.9	\$18,207	3.2	1.4
Men	00-19	526	11.2	0.0	\$5,995	2.6	1.6
Men	20-24	494	10.5	0.0	\$20,503	2.8	1.5
Men	25-34	1,019	21.7	0.0	\$35,130	3.1	1.4
Men	35-44	849	18.1	0.0	\$42,385	3.2	1.4
Men	45-54	1,012	21.6	0.0	\$50,936	3.4	1.3
Men	55-64	639	13.6	0.0	\$46,703	3.3	1.2
Men	65-Up	141	3.0	0.0	\$22,882	3.1	1.2
Men	N/A	12	0.3	0.0	\$32,287	2.8	1.3
Men	Total	4,692	100.0	43.3	\$36,247	3.1	1.4
N/A	N/A	2,688	100.0	0.0	\$16,525	1.8	1.1
N/A	Total	2,688	100.0	24.8	\$16,525	1.8	1.1
Total	00-19	984	9.1	0.0	\$5,059	2.6	1.6
Total	20-24	863	8.0	0.0	\$15,970	2.8	1.6
Total	25-34	1,620	15.0	0.0	\$27,849	3.1	1.5
Total	35-44	1,451	13.4	0.0	\$34,159	3.3	1.4
Total	45-54	1,798	16.6	0.0	\$39,985	3.4	1.3
Total	55-64	1,148	10.6	0.0	\$36,454	3.4	1.2
Total	65-Up	255	2.4	0.0	\$20,306	3.2	1.2
Total	N/A	2,712	25.0	0.0	\$16,579	1.8	1.1
Total	Total	10,831	100.0	100.0	\$25,604	2.8	1.3

Note: Persons worked at any time during the year.

County Determination: Based on county of employment in which the person made the most money in the year.

N/A: Represents persons with demographic data that is unavailable.

N/A = Nonresidents, individuals for whom demographic data are not available.

Source: Demographics of Persons Working in Wyoming by County, Industry, Age, & Gender, 2000-2018.

Research & Planning, Wyoming Department of Workforce Services.

Prepared by M. Moore, Research & Planning, WY DWS, 7/31/19.

Average Earnings by Age and Gender with Place of Work in Lincoln County in 2008

Gender	Age Group	Number	Age Percent	Gender Percent	Average Annual Wage	Average Quarters Worked	Average Annual Employers
Women	00-19	424	12.2	0.0	\$4,037	2.7	1.5
Women	20-24	364	10.5	0.0	\$9,884	2.9	1.7
Women	25-34	604	17.3	0.0	\$16,252	3.1	1.4
Women	35-44	652	18.7	0.0	\$22,290	3.4	1.4
Women	45-54	769	22.1	0.0	\$26,445	3.5	1.3
Women	55-64	538	15.4	0.0	\$25,148	3.5	1.2
Women	65-Up	122	3.5	0.0	\$18,557	3.2	1.2
Women	N/A	10	0.3	0.0	\$13,566	3.4	1.4
Women	Total	3,483	100.0	35.3	\$18,927	3.3	1.4
Men	00-19	450	10.1	0.0	\$5,286	2.6	1.5
Men	20-24	441	9.9	0.0	\$22,039	2.9	1.5
Men	25-34	990	22.3	0.0	\$35,504	3.2	1.4
Men	35-44	808	18.2	0.0	\$44,443	3.2	1.3
Men	45-54	954	21.4	0.0	\$50,893	3.3	1.2
Men	55-64	629	14.1	0.0	\$50,054	3.4	1.2
Men	65-Up	167	3.8	0.0	\$21,854	2.9	1.1
Men	N/A	9	0.2	0.0	\$32,382	3.0	1.0
Men	Total	4,448	100.0	45.0	\$37,575	3.2	1.3
N/A	N/A	1,946	100.0	0.0	\$15,469	1.7	1.1
N/A	Total	1,946	100.0	19.7	\$15,469	1.7	1.1
Total	00-19	874	8.8	0.0	\$4,680	2.6	1.5
Total	20-24	805	8.2	0.0	\$16,543	2.9	1.6
Total	25-34	1,594	16.1	0.0	\$28,209	3.2	1.4
Total	35-44	1,460	14.8	0.0	\$34,550	3.3	1.4
Total	45-54	1,723	17.4	0.0	\$39,981	3.4	1.2
Total	55-64	1,167	11.8	0.0	\$38,572	3.5	1.2
Total	65-Up	289	2.9	0.0	\$20,462	3.0	1.2
Total	N/A	1,965	19.9	0.0	\$15,537	1.7	1.1
Total	Total	9,877	100.0	100.0	\$26,644	2.9	1.3

Note: Persons worked at any time during the year.

County Determination: Based on county of employment in which the person made the most money in the year.

N/A: Represents persons with demographic data that is unavailable.

N/A = Nonresidents, individuals for whom demographic data are not available.

Source: Demographics of Persons Working in Wyoming by County, Industry, Age, & Gender, 2000-2018.

Research & Planning, Wyoming Department of Workforce Services.

Prepared by M. Moore, Research & Planning, WY DWS, 7/31/19.

Average Earnings by Age and Gender with Place of Work in Lincoln County in 2009

Gender	Age Group	Number	Age Percent	Gender Percent	Average Annual Wage	Average Quarters Worked	Average Annual Employers
Women	00-19	356	10.5	0.0	\$3,733	2.6	1.4
Women	20-24	327	9.7	0.0	\$9,205	2.9	1.6
Women	25-34	608	18.0	0.0	\$16,332	3.2	1.4
Women	35-44	638	18.9	0.0	\$21,499	3.4	1.3
Women	45-54	752	22.2	0.0	\$26,806	3.6	1.2
Women	55-64	549	16.2	0.0	\$26,283	3.5	1.1
Women	65-Up	144	4.3	0.0	\$13,713	3.2	1.2
Women	N/A	9	0.3	0.0	\$15,988	3.6	1.8
Women	Total	3,383	100.0	40.5	\$19,123	3.3	1.3
Men	00-19	352	8.8	0.0	\$4,367	2.5	1.4
Men	20-24	383	9.6	0.0	\$18,236	2.9	1.4
Men	25-34	893	22.3	0.0	\$34,065	3.2	1.3
Men	35-44	740	18.5	0.0	\$44,550	3.3	1.2
Men	45-54	849	21.2	0.0	\$50,683	3.4	1.2
Men	55-64	618	15.4	0.0	\$49,384	3.4	1.1
Men	65-Up	161	4.0	0.0	\$22,151	3.1	1.1
Men	N/A	9	0.2	0.0	\$34,873	2.8	1.0
Men	Total	4,005	100.0	48.0	\$37,288	3.2	1.2
N/A	N/A	955	100.0	0.0	\$12,052	2.0	1.1
N/A	Total	955	100.0	11.4	\$12,052	2.0	1.1
Total	00-19	708	8.5	0.0	\$4,048	2.5	1.4
Total	20-24	710	8.5	0.0	\$14,077	2.9	1.5
Total	25-34	1,501	18.0	0.0	\$26,882	3.2	1.3
Total	35-44	1,378	16.5	0.0	\$33,878	3.3	1.2
Total	45-54	1,601	19.2	0.0	\$39,468	3.5	1.2
Total	55-64	1,167	14.0	0.0	\$38,516	3.5	1.1
Total	65-Up	305	3.7	0.0	\$18,167	3.1	1.1
Total	N/A	973	11.7	0.0	\$12,300	2.0	1.1
Total	Total	8,343	100.0	100.0	\$27,033	3.1	1.2

Note: Persons worked at any time during the year.

County Determination: Based on county of employment in which the person made the most money in the year.

N/A: Represents persons with demographic data that is unavailable.

N/A = Nonresidents, individuals for whom demographic data are not available.

Source: Demographics of Persons Working in Wyoming by County, Industry, Age, & Gender, 2000-2018.

Research & Planning, Wyoming Department of Workforce Services.

Prepared by M. Moore, Research & Planning, WY DWS, 7/31/19.

Average Earnings by Age and Gender with Place of Work in Lincoln County in 2010

Gender	Age Group	Number	Age Percent	Gender Percent	Average Annual Wage	Average Quarters Worked	Average Annual Employers
Women	00-19	338	10.5	0.0	\$3,843	2.5	1.4
Women	20-24	292	9.0	0.0	\$10,197	2.9	1.5
Women	25-34	553	17.1	0.0	\$16,616	3.2	1.3
Women	35-44	623	19.3	0.0	\$21,832	3.4	1.3
Women	45-54	728	22.5	0.0	\$26,574	3.6	1.2
Women	55-64	540	16.7	0.0	\$26,685	3.6	1.2
Women	65-Up	147	4.5	0.0	\$12,082	3.2	1.1
Women	N/A	11	0.3	0.0	\$11,722	3.0	1.4
Women	Total	3,232	100.0	38.7	\$19,408	3.3	1.3
Men	00-19	284	7.1	0.0	\$4,162	2.4	1.3
Men	20-24	373	9.3	0.0	\$18,182	2.8	1.4
Men	25-34	873	21.7	0.0	\$34,074	3.2	1.3
Men	35-44	764	19.0	0.0	\$45,383	3.2	1.2
Men	45-54	867	21.6	0.0	\$47,857	3.3	1.2
Men	55-64	663	16.5	0.0	\$48,305	3.3	1.1
Men	65-Up	189	4.7	0.0	\$22,013	2.9	1.1
Men	N/A	6	0.1	0.0	\$42,202	3.0	1.3
Men	Total	4,019	100.0	48.1	\$37,401	3.1	1.2
N/A	N/A	1,100	100.0	0.0	\$18,338	1.9	1.1
N/A	Total	1,100	100.0	13.2	\$18,338	1.9	1.1
Total	00-19	622	7.4	0.0	\$3,989	2.5	1.4
Total	20-24	665	8.0	0.0	\$14,676	2.9	1.5
Total	25-34	1,426	17.1	0.0	\$27,304	3.2	1.3
Total	35-44	1,387	16.6	0.0	\$34,805	3.3	1.3
Total	45-54	1,595	19.1	0.0	\$38,143	3.4	1.2
Total	55-64	1,203	14.4	0.0	\$38,600	3.4	1.1
Total	65-Up	336	4.0	0.0	\$17,668	3.0	1.1
Total	N/A	1,117	13.4	0.0	\$18,401	1.9	1.1
Total	Total	8,351	100.0	100.0	\$27,926	3.0	1.2

Note: Persons worked at any time during the year.

County Determination: Based on county of employment in which the person made the most money in the year.

N/A: Represents persons with demographic data that is unavailable.

N/A = Nonresidents, individuals for whom demographic data are not available.

Source: Demographics of Persons Working in Wyoming by County, Industry, Age, & Gender, 2000-2018.

Research & Planning, Wyoming Department of Workforce Services.

Prepared by M. Moore, Research & Planning, WY DWS, 7/31/19.

Average Earnings by Age and Gender with Place of Work in Lincoln County in 2011

Gender	Age Group	Number	Age Percent	Gender Percent	Average Annual Wage	Average Quarters Worked	Average Annual Employers
Women	00-19	326	10.1	0.0	\$3,525	2.4	1.4
Women	20-24	300	9.3	0.0	\$9,566	2.8	1.5
Women	25-34	545	16.9	0.0	\$17,521	3.1	1.3
Women	35-44	623	19.3	0.0	\$22,232	3.4	1.3
Women	45-54	717	22.2	0.0	\$26,789	3.5	1.3
Women	55-64	537	16.6	0.0	\$27,704	3.6	1.2
Women	65-Up	169	5.2	0.0	\$13,586	3.1	1.1
Women	N/A	11	0.3	0.0	\$17,505	3.2	1.5
Women	Total	3,228	100.0	38.5	\$19,824	3.2	1.3
Men	00-19	293	7.2	0.0	\$4,351	2.4	1.4
Men	20-24	366	9.0	0.0	\$16,028	2.6	1.5
Men	25-34	869	21.4	0.0	\$35,143	3.1	1.3
Men	35-44	774	19.1	0.0	\$46,983	3.3	1.3
Men	45-54	856	21.1	0.0	\$47,432	3.2	1.2
Men	55-64	704	17.4	0.0	\$50,973	3.3	1.2
Men	65-Up	188	4.6	0.0	\$21,700	3.0	1.2
Men	N/A	7	0.2	0.0	\$47,198	3.7	1.1
Men	Total	4,057	100.0	48.3	\$38,191	3.1	1.3
N/A	N/A	1,106	100.0	0.0	\$17,035	1.8	1.1
N/A	Total	1,106	100.0	13.2	\$17,035	1.8	1.1
Total	00-19	619	7.4	0.0	\$3,916	2.4	1.4
Total	20-24	666	7.9	0.0	\$13,117	2.7	1.5
Total	25-34	1,414	16.9	0.0	\$28,351	3.1	1.3
Total	35-44	1,397	16.6	0.0	\$35,945	3.3	1.3
Total	45-54	1,573	18.7	0.0	\$38,023	3.3	1.2
Total	55-64	1,241	14.8	0.0	\$40,904	3.4	1.2
Total	65-Up	357	4.3	0.0	\$17,859	3.1	1.1
Total	N/A	1,124	13.4	0.0	\$17,228	1.8	1.1
Total	Total	8,391	100.0	100.0	\$28,337	3.0	1.3

Note: Persons worked at any time during the year.

County Determination: Based on county of employment in which the person made the most money in the year.

N/A: Represents persons with demographic data that is unavailable.

N/A = Nonresidents, individuals for whom demographic data are not available.

Source: Demographics of Persons Working in Wyoming by County, Industry, Age, & Gender, 2000-2018.

Research & Planning, Wyoming Department of Workforce Services.

Prepared by M. Moore, Research & Planning, WY DWS, 7/31/19.

Average Earnings by Age and Gender with Place of Work in Lincoln County in 2012

Gender	Age Group	Number	Age Percent	Gender Percent	Average Annual Wage	Average Quarters Worked	Average Annual Employers
Women	00-19	273	8.6	0.0	\$3,683	2.5	1.4
Women	20-24	300	9.4	0.0	\$10,419	2.9	1.6
Women	25-34	525	16.5	0.0	\$18,515	3.2	1.3
Women	35-44	642	20.2	0.0	\$23,482	3.5	1.4
Women	45-54	683	21.5	0.0	\$27,556	3.6	1.3
Women	55-64	573	18.0	0.0	\$27,000	3.5	1.2
Women	65-Up	172	5.4	0.0	\$12,449	3.2	1.1
Women	N/A	15	0.5	0.0	\$13,077	2.9	1.2
Women	Total	3,183	100.0	40.1	\$20,596	3.3	1.3
Men	00-19	288	7.5	0.0	\$4,643	2.4	1.4
Men	20-24	323	8.5	0.0	\$17,915	2.8	1.5
Men	25-34	802	21.0	0.0	\$38,096	3.1	1.4
Men	35-44	722	18.9	0.0	\$49,488	3.2	1.3
Men	45-54	782	20.5	0.0	\$54,935	3.3	1.3
Men	55-64	710	18.6	0.0	\$55,408	3.3	1.4
Men	65-Up	188	4.9	0.0	\$25,491	3.1	1.1
Men	N/A	6	0.2	0.0	\$51,852	3.7	2.0
Men	Total	3,821	100.0	48.1	\$42,086	3.1	1.4
N/A	N/A	935	100.0	0.0	\$16,055	1.8	1.1
N/A	Total	935	100.0	11.8	\$16,055	1.8	1.1
Total	00-19	561	7.1	0.0	\$4,176	2.5	1.4
Total	20-24	623	7.8	0.0	\$14,305	2.8	1.6
Total	25-34	1,327	16.7	0.0	\$30,350	3.2	1.4
Total	35-44	1,364	17.2	0.0	\$37,248	3.4	1.3
Total	45-54	1,465	18.5	0.0	\$42,171	3.4	1.3
Total	55-64	1,283	16.2	0.0	\$42,721	3.4	1.3
Total	65-Up	360	4.5	0.0	\$19,260	3.1	1.1
Total	N/A	956	12.0	0.0	\$16,233	1.8	1.1
Total	Total	7,939	100.0	100.0	\$30,404	3.0	1.3

Note: Persons worked at any time during the year.

County Determination: Based on county of employment in which the person made the most money in the year.

N/A: Represents persons with demographic data that is unavailable.

N/A = Nonresidents, individuals for whom demographic data are not available.

Source: Demographics of Persons Working in Wyoming by County, Industry, Age, & Gender, 2000-2018.

Research & Planning, Wyoming Department of Workforce Services.

Prepared by M. Moore, Research & Planning, WY DWS, 7/31/19.

Average Earnings by Age and Gender with Place of Work in Lincoln County in 2013

Gender	Age Group	Number	Age Percent	Gender Percent	Average Annual Wage	Average Quarters Worked	Average Annual Employers
Women	00-19	280	9.0	0.0	\$3,752	2.4	1.3
Women	20-24	285	9.1	0.0	\$11,091	2.9	1.6
Women	25-34	526	16.8	0.0	\$18,987	3.3	1.4
Women	35-44	618	19.8	0.0	\$23,673	3.5	1.3
Women	45-54	643	20.6	0.0	\$27,617	3.6	1.3
Women	55-64	589	18.8	0.0	\$28,409	3.5	1.2
Women	65-Up	169	5.4	0.0	\$13,918	3.3	1.1
Women	N/A	17	0.5	0.0	\$15,222	3.0	1.2
Women	Total	3,127	100.0	43.2	\$21,084	3.3	1.3
Men	00-19	259	7.4	0.0	\$4,560	2.4	1.3
Men	20-24	325	9.3	0.0	\$16,031	2.9	1.6
Men	25-34	724	20.7	0.0	\$39,148	3.3	1.3
Men	35-44	700	20.0	0.0	\$54,163	3.5	1.2
Men	45-54	650	18.6	0.0	\$53,829	3.5	1.2
Men	55-64	640	18.3	0.0	\$58,245	3.5	1.2
Men	65-Up	196	5.6	0.0	\$24,745	3.1	1.1
Men	N/A	7	0.2	0.0	\$44,535	2.6	1.0
Men	Total	3,501	100.0	48.3	\$42,867	3.3	1.3
N/A	N/A	615	100.0	0.0	\$16,046	2.1	1.1
N/A	Total	615	100.0	8.5	\$16,046	2.1	1.1
Total	00-19	539	7.4	0.0	\$4,140	2.4	1.3
Total	20-24	610	8.4	0.0	\$13,723	2.9	1.6
Total	25-34	1,250	17.3	0.0	\$30,664	3.3	1.4
Total	35-44	1,318	18.2	0.0	\$39,866	3.5	1.3
Total	45-54	1,293	17.9	0.0	\$40,794	3.5	1.2
Total	55-64	1,229	17.0	0.0	\$43,946	3.5	1.2
Total	65-Up	365	5.0	0.0	\$19,732	3.2	1.1
Total	N/A	639	8.8	0.0	\$16,336	2.2	1.1
Total	Total	7,243	100.0	100.0	\$31,185	3.2	1.3

Note: Persons worked at any time during the year.

County Determination: Based on county of employment in which the person made the most money in the year.

N/A: Represents persons with demographic data that is unavailable.

N/A = Nonresidents, individuals for whom demographic data are not available.

Source: Demographics of Persons Working in Wyoming by County, Industry, Age, & Gender, 2000-2018.

Research & Planning, Wyoming Department of Workforce Services.

Prepared by M. Moore, Research & Planning, WY DWS, 7/31/19.

Average Earnings by Age and Gender with Place of Work in Lincoln County in 2014

Gender	Age Group	Number	Age Percent	Gender Percent	Average Annual Wage	Average Quarters Worked	Average Annual Employers
Women	00-19	301	9.4	0.0	\$3,626	2.4	1.4
Women	20-24	294	9.2	0.0	\$10,548	2.8	1.6
Women	25-34	559	17.5	0.0	\$18,598	3.2	1.4
Women	35-44	645	20.2	0.0	\$24,797	3.4	1.3
Women	45-54	627	19.6	0.0	\$28,523	3.6	1.3
Women	55-64	579	18.1	0.0	\$28,323	3.6	1.2
Women	65-Up	177	5.5	0.0	\$14,517	3.2	1.1
Women	N/A	18	0.6	0.0	\$14,808	3.1	1.0
Women	Total	3,200	100.0	42.4	\$21,157	3.3	1.3
Men	00-19	307	8.5	0.0	\$4,245	2.3	1.3
Men	20-24	321	8.9	0.0	\$17,406	2.8	1.5
Men	25-34	732	20.3	0.0	\$38,271	3.2	1.3
Men	35-44	751	20.8	0.0	\$56,623	3.5	1.2
Men	45-54	656	18.2	0.0	\$52,678	3.5	1.2
Men	55-64	634	17.6	0.0	\$58,572	3.5	1.1
Men	65-Up	203	5.6	0.0	\$27,492	3.2	1.2
Men	N/A	8	0.2	0.0	\$40,869	3.3	1.1
Men	Total	3,612	100.0	47.9	\$42,920	3.3	1.3
N/A	N/A	735	100.0	0.0	\$15,261	2.0	1.1
N/A	Total	735	100.0	9.7	\$15,261	2.0	1.1
Total	00-19	608	8.1	0.0	\$3,939	2.3	1.4
Total	20-24	615	8.1	0.0	\$14,128	2.8	1.5
Total	25-34	1,291	17.1	0.0	\$29,752	3.2	1.3
Total	35-44	1,396	18.5	0.0	\$41,918	3.5	1.3
Total	45-54	1,283	17.0	0.0	\$40,873	3.5	1.2
Total	55-64	1,213	16.1	0.0	\$44,133	3.5	1.2
Total	65-Up	380	5.0	0.0	\$21,449	3.2	1.1
Total	N/A	761	10.1	0.0	\$15,520	2.1	1.1
Total	Total	7,547	100.0	100.0	\$30,999	3.1	1.3

Note: Persons worked at any time during the year.

County Determination: Based on county of employment in which the person made the most money in the year.

N/A: Represents persons with demographic data that is unavailable.

N/A = Nonresidents, individuals for whom demographic data are not available.

Source: Demographics of Persons Working in Wyoming by County, Industry, Age, & Gender, 2000-2018.

Research & Planning, Wyoming Department of Workforce Services.

Prepared by M. Moore, Research & Planning, WY DWS, 7/31/19.

Average Earnings by Age and Gender with Place of Work in Lincoln County in 2015

Gender	Age Group	Number	Age Percent	Gender Percent	Average Annual Wage	Average Quarters Worked	Average Annual Employers
Women	00-19	327	10.1	0.0	\$3,611	2.4	1.5
Women	20-24	296	9.1	0.0	\$11,187	2.9	1.7
Women	25-34	568	17.5	0.0	\$18,605	3.2	1.4
Women	35-44	640	19.8	0.0	\$26,789	3.5	1.3
Women	45-54	616	19.0	0.0	\$29,573	3.7	1.3
Women	55-64	585	18.1	0.0	\$29,221	3.6	1.2
Women	65-Up	183	5.7	0.0	\$15,593	3.2	1.1
Women	N/A	22	0.7	0.0	\$13,848	2.9	1.1
Women	Total	3,237	100.0	42.5	\$21,833	3.3	1.3
Men	00-19	317	8.7	0.0	\$5,024	2.5	1.4
Men	20-24	318	8.7	0.0	\$18,852	2.9	1.5
Men	25-34	717	19.7	0.0	\$39,006	3.3	1.4
Men	35-44	775	21.2	0.0	\$54,489	3.4	1.3
Men	45-54	658	18.0	0.0	\$54,714	3.5	1.3
Men	55-64	640	17.5	0.0	\$60,521	3.5	1.3
Men	65-Up	214	5.9	0.0	\$26,990	3.3	1.1
Men	N/A	9	0.2	0.0	\$30,537	2.9	1.2
Men	Total	3,648	100.0	47.9	\$43,468	3.3	1.3
N/A	N/A	736	100.0	0.0	\$16,415	2.2	1.2
N/A	Total	736	100.0	9.7	\$16,415	2.2	1.2
Total	00-19	644	8.5	0.0	\$4,306	2.5	1.4
Total	20-24	614	8.1	0.0	\$15,157	2.9	1.6
Total	25-34	1,285	16.9	0.0	\$29,989	3.3	1.4
Total	35-44	1,415	18.6	0.0	\$41,960	3.5	1.3
Total	45-54	1,274	16.7	0.0	\$42,558	3.6	1.3
Total	55-64	1,225	16.1	0.0	\$45,574	3.6	1.2
Total	65-Up	397	5.2	0.0	\$21,736	3.3	1.1
Total	N/A	767	10.1	0.0	\$16,507	2.2	1.2
Total	Total	7,621	100.0	100.0	\$31,666	3.2	1.3

Note: Persons worked at any time during the year.

County Determination: Based on county of employment in which the person made the most money in the year.

N/A: Represents persons with demographic data that is unavailable.

N/A = Nonresidents, individuals for whom demographic data are not available.

Source: Demographics of Persons Working in Wyoming by County, Industry, Age, & Gender, 2000-2018.

Research & Planning, Wyoming Department of Workforce Services.

Prepared by M. Moore, Research & Planning, WY DWS, 7/31/19.

Average Earnings by Age and Gender with Place of Work in Lincoln County in 2016

Gender	Age Group	Number	Age Percent	Gender Percent	Average Annual Wage	Average Quarters Worked	Average Annual Employers
Women	00-19	353	10.8	0.0	\$4,403	2.6	1.4
Women	20-24	286	8.7	0.0	\$11,113	2.9	1.6
Women	25-34	543	16.6	0.0	\$20,845	3.3	1.4
Women	35-44	635	19.4	0.0	\$26,097	3.5	1.3
Women	45-54	636	19.4	0.0	\$29,664	3.6	1.3
Women	55-64	616	18.8	0.0	\$28,906	3.6	1.2
Women	65-Up	186	5.7	0.0	\$16,318	3.2	1.1
Women	N/A	18	0.5	0.0	\$17,762	3.2	1.2
Women	Total	3,273	100.0	41.4	\$22,197	3.3	1.3
Men	00-19	312	8.4	0.0	\$4,578	2.4	1.3
Men	20-24	293	7.9	0.0	\$19,368	2.9	1.5
Men	25-34	732	19.7	0.0	\$38,799	3.3	1.3
Men	35-44	782	21.1	0.0	\$55,701	3.4	1.2
Men	45-54	685	18.5	0.0	\$55,179	3.4	1.2
Men	55-64	654	17.6	0.0	\$59,810	3.5	1.2
Men	65-Up	245	6.6	0.0	\$27,257	3.0	1.1
Men	N/A	7	0.2	0.0	\$52,287	4.0	1.0
Men	Total	3,710	100.0	46.9	\$43,941	3.3	1.2
N/A	N/A	924	100.0	0.0	\$15,707	2.0	1.1
N/A	Total	924	100.0	11.7	\$15,707	2.0	1.1
Total	00-19	665	8.4	0.0	\$4,485	2.5	1.4
Total	20-24	579	7.3	0.0	\$15,291	2.9	1.5
Total	25-34	1,275	16.1	0.0	\$31,153	3.3	1.3
Total	35-44	1,417	17.9	0.0	\$42,434	3.5	1.2
Total	45-54	1,321	16.7	0.0	\$42,895	3.5	1.2
Total	55-64	1,270	16.1	0.0	\$44,820	3.5	1.2
Total	65-Up	431	5.5	0.0	\$22,536	3.1	1.1
Total	N/A	949	12.0	0.0	\$16,015	2.0	1.1
Total	Total	7,907	100.0	100.0	\$31,641	3.1	1.2

Note: Persons worked at any time during the year.

County Determination: Based on county of employment in which the person made the most money in the year.

N/A: Represents persons with demographic data that is unavailable.

N/A = Nonresidents, individuals for whom demographic data are not available.

Source: Demographics of Persons Working in Wyoming by County, Industry, Age, & Gender, 2000-2018.

Research & Planning, Wyoming Department of Workforce Services.

Prepared by M. Moore, Research & Planning, WY DWS, 7/31/19.

Average Earnings by Age and Gender with Place of Work in Lincoln County in 2017

Gender	Age Group	Number	Age Percent	Gender Percent	Average Annual Wage	Average Quarters Worked	Average Annual Employers
Women	00-19	336	10.1	0.0	\$4,096	2.5	1.4
Women	20-24	296	8.9	0.0	\$12,040	3.0	1.6
Women	25-34	576	17.4	0.0	\$21,741	3.3	1.4
Women	35-44	650	19.6	0.0	\$25,862	3.5	1.3
Women	45-54	614	18.5	0.0	\$33,792	3.6	1.3
Women	55-64	607	18.3	0.0	\$28,653	3.6	1.2
Women	65-Up	220	6.6	0.0	\$17,416	3.3	1.1
Women	N/A	15	0.5	0.0	\$22,569	3.4	1.1
Women	Total	3,314	100.0	41.2	\$23,109	3.3	1.3
Men	00-19	334	8.9	0.0	\$4,979	2.4	1.3
Men	20-24	303	8.1	0.0	\$18,917	2.9	1.6
Men	25-34	714	19.1	0.0	\$40,752	3.3	1.3
Men	35-44	782	20.9	0.0	\$56,369	3.4	1.2
Men	45-54	666	17.8	0.0	\$58,931	3.5	1.2
Men	55-64	679	18.2	0.0	\$59,156	3.5	1.2
Men	65-Up	249	6.7	0.0	\$31,725	3.2	1.2
Men	N/A	8	0.2	0.0	\$45,934	3.9	1.0
Men	Total	3,735	100.0	46.4	\$45,048	3.3	1.3
N/A	N/A	994	100.0	0.0	\$16,789	2.1	1.1
N/A	Total	994	100.0	12.4	\$16,789	2.1	1.1
Total	00-19	670	8.3	0.0	\$4,537	2.5	1.4
Total	20-24	599	7.4	0.0	\$15,519	2.9	1.6
Total	25-34	1,290	16.0	0.0	\$32,263	3.3	1.4
Total	35-44	1,432	17.8	0.0	\$42,522	3.4	1.3
Total	45-54	1,280	15.9	0.0	\$46,872	3.5	1.2
Total	55-64	1,286	16.0	0.0	\$44,758	3.5	1.2
Total	65-Up	469	5.8	0.0	\$25,013	3.2	1.1
Total	N/A	1,017	12.6	0.0	\$17,104	2.1	1.1
Total	Total	8,043	100.0	100.0	\$32,516	3.2	1.3

Note: Persons worked at any time during the year.

County Determination: Based on county of employment in which the person made the most money in the year.

N/A: Represents persons with demographic data that is unavailable.

N/A = Nonresidents, individuals for whom demographic data are not available.

Source: Demographics of Persons Working in Wyoming by County, Industry, Age, & Gender, 2000-2018.

Research & Planning, Wyoming Department of Workforce Services.

Prepared by M. Moore, Research & Planning, WY DWS, 7/31/19.

Average Earnings by Age and Gender with Place of Work in Lincoln County in 2018

Gender	Age Group	Number	Age Percent	Gender Percent	Average Annual Wage	Average Quarters Worked	Average Annual Employers
Women	00-19	307	9.5	0.0	\$4,592	2.6	1.5
Women	20-24	275	8.5	0.0	\$14,121	3.1	1.6
Women	25-34	563	17.4	0.0	\$22,596	3.3	1.4
Women	35-44	648	20.0	0.0	\$27,731	3.5	1.3
Women	45-54	592	18.3	0.0	\$34,701	3.7	1.3
Women	55-64	599	18.5	0.0	\$31,787	3.6	1.2
Women	65-Up	236	7.3	0.0	\$18,055	3.3	1.1
Women	N/A	18	0.6	0.0	\$22,617	3.4	1.2
Women	Total	3,238	100.0	41.2	\$24,779	3.4	1.3
Men	00-19	318	8.8	0.0	\$5,019	2.5	1.4
Men	20-24	303	8.4	0.0	\$19,587	3.0	1.5
Men	25-34	670	18.5	0.0	\$45,125	3.4	1.4
Men	35-44	800	22.1	0.0	\$61,437	3.5	1.2
Men	45-54	608	16.8	0.0	\$63,003	3.6	1.2
Men	55-64	647	17.9	0.0	\$63,482	3.5	1.2
Men	65-Up	261	7.2	0.0	\$33,625	3.2	1.1
Men	N/A	8	0.2	0.0	\$52,390	3.4	1.0
Men	Total	3,615	100.0	45.9	\$48,544	3.4	1.3
N/A	N/A	1,015	100.0	0.0	\$17,186	2.2	1.2
N/A	Total	1,015	100.0	12.9	\$17,186	2.2	1.2
Total	00-19	625	7.9	0.0	\$4,809	2.6	1.4
Total	20-24	578	7.3	0.0	\$16,986	3.0	1.6
Total	25-34	1,233	15.7	0.0	\$34,838	3.4	1.4
Total	35-44	1,448	18.4	0.0	\$46,353	3.5	1.3
Total	45-54	1,200	15.3	0.0	\$49,041	3.6	1.3
Total	55-64	1,246	15.8	0.0	\$48,245	3.6	1.2
Total	65-Up	497	6.3	0.0	\$26,232	3.2	1.1
Total	N/A	1,041	13.2	0.0	\$17,550	2.2	1.2
Total	Total	7,868	100.0	100.0	\$34,719	3.2	1.3

Note: Persons worked at any time during the year.

County Determination: Based on county of employment in which the person made the most money in the year.

N/A: Represents persons with demographic data that is unavailable.

N/A = Nonresidents, individuals for whom demographic data are not available.

Source: Demographics of Persons Working in Wyoming by County, Industry, Age, & Gender, 2000-2018.

Research & Planning, Wyoming Department of Workforce Services.

Prepared by M. Moore, Research & Planning, WY DWS, 7/31/19.