

# Wyoming Public Administration (NAICS 92) at a Glance, 2017

Demographics of Persons Working in Wyoming by County, Industry, Age, & Gender, 2000-2017

**Table: Total Number of Persons Working in Public Administration (NAICS 92) at Any Time by Gender and Age, 2016-2017**

Gender	2016	2017	Change	
			N	%
Women	12,821	12,503	-318	-2.5
Men	14,397	13,834	-563	-3.9
Nonresidents	593	641	48	8.1
<b>Total</b>	<b>27,811</b>	<b>26,978</b>	<b>-833</b>	<b>-3.0</b>

Age	2016	2017	Change	
			N	%
00-19	1,342	1,372	30	2.2
20-24	1,741	1,668	-73	-4.2
25-34	5,337	5,041	-296	-5.5
35-44	5,511	5,435	-76	-1.4
45-54	5,662	5,453	-209	-3.7
55-64	5,770	5,536	-234	-4.1
65-Up	1,853	1,830	-23	-1.2
Nonresidents	595	643	48	8.1
<b>Total</b>	<b>27,811</b>	<b>26,978</b>	<b>-833</b>	<b>-3.0</b>

## Women's Wages as % of Men's Wages

Public Administration (NAICS 92): 79.9%  
 Total, All Industries: 62.7%

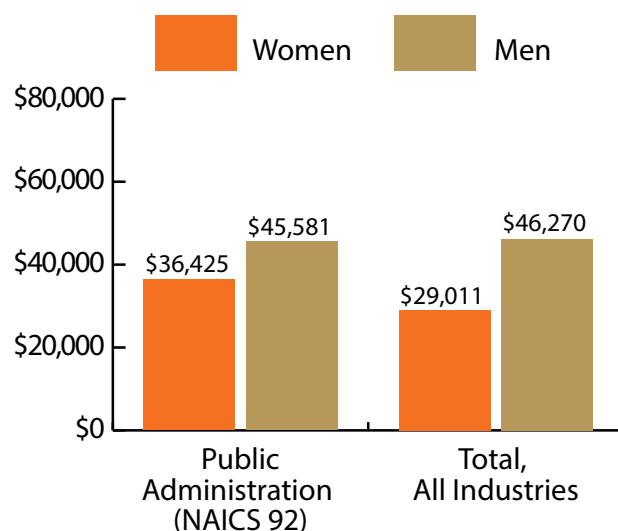


Figure: Average Annual Wages by Gender, 2017

Total = 26,978

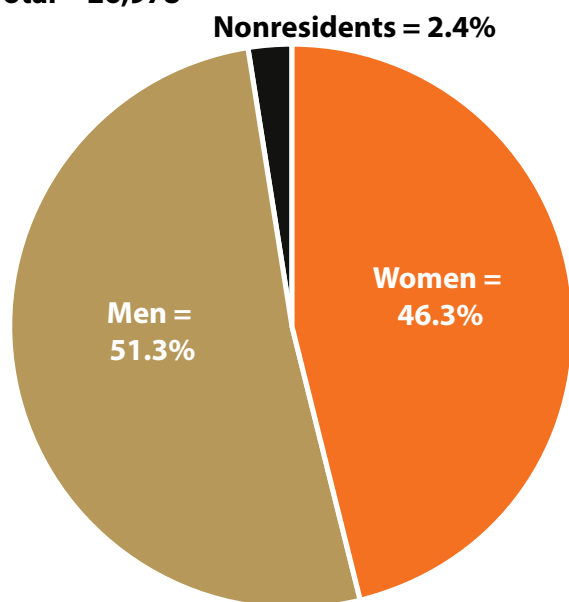


Figure: Persons Working by Gender, 2017

Total = 26,978

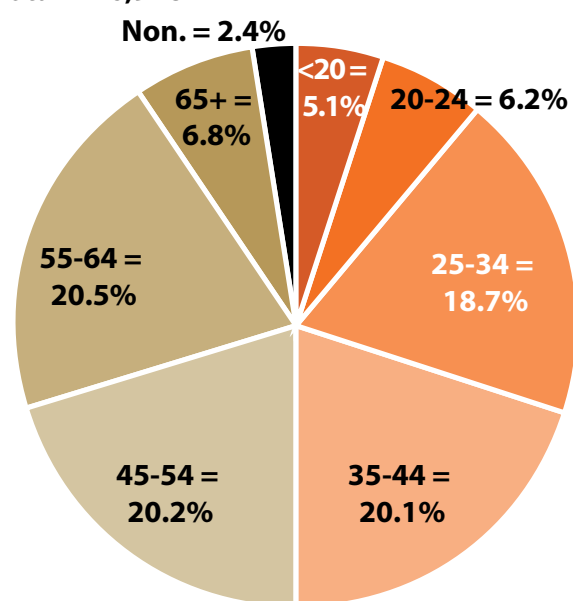


Figure: Persons Working by Age, 2017

Note: Nonresidents are individuals for whom demographic data are not available.

Source: Demographics of Persons Working in Wyoming by County, Industry, Age, & Gender, 2000-2017. Research & Planning, Wyoming Department of Workforce Services. Prepared by M. Moore, Research & Planning, WY DWS, 6/12/18.

## Persons Working in Public Administration (NAICS 92) in Wyoming by Gender and Age, 2000-2017

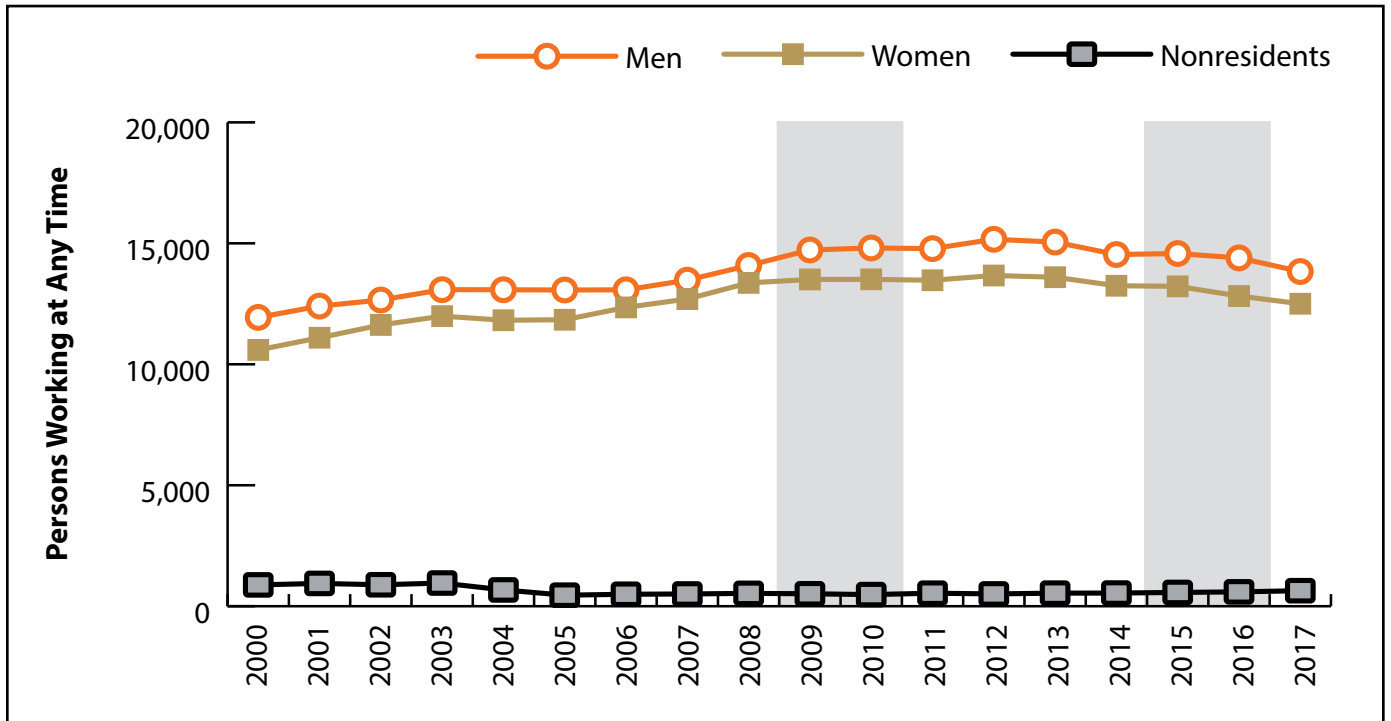


Figure: Persons Working in Public Administration (NAICS 92) in Wyoming at Any Time by Gender, 2000-2017

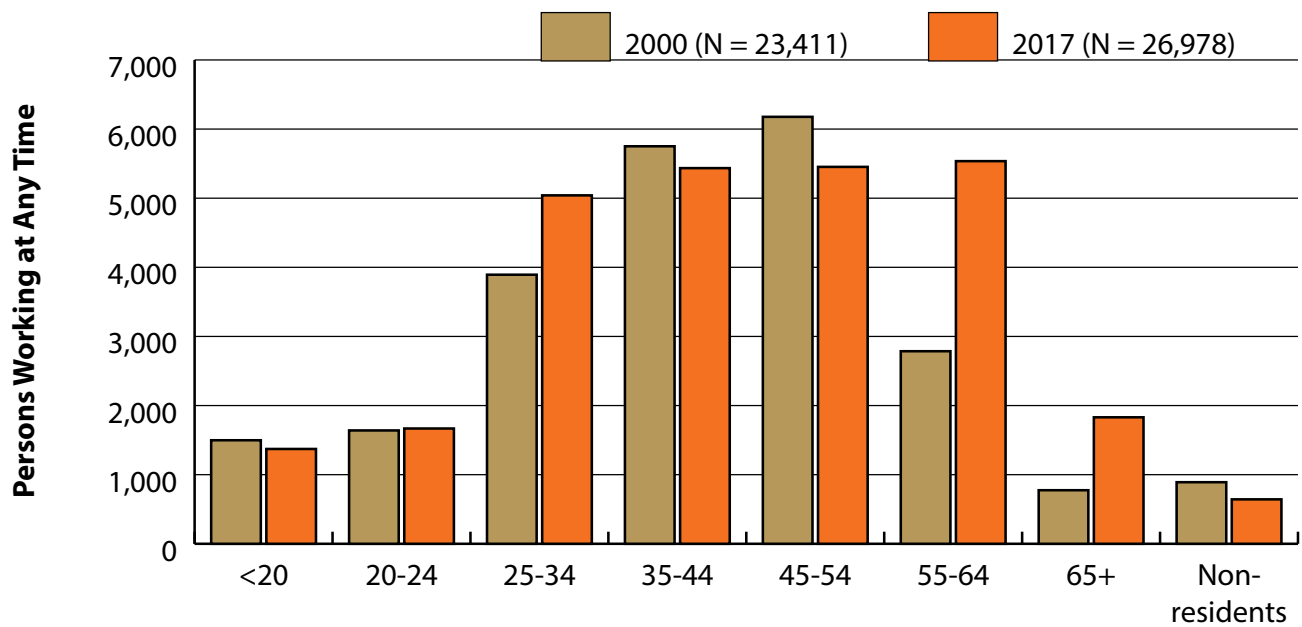


Figure: Persons Working in Public Administration (NAICS 92) in Wyoming at Any Time by Age, 2000-2017

Note: Nonresidents are individuals for whom demographic data are not available.  
 Shaded areas indicate periods of economic downturn: 2009Q1-2010Q1 and 2015Q2-2016Q4.  
 Source: Demographics of Persons Working in Wyoming by County, Industry, Age, & Gender, 2000-2017. Research & Planning, Wyoming Department of Workforce Services. Prepared by M. Moore, Research & Planning, WY DWS, 6/12/18.

## Wages for Persons Working in Public Administration (NAICS 92) in Wyoming by Gender, 2000-2017

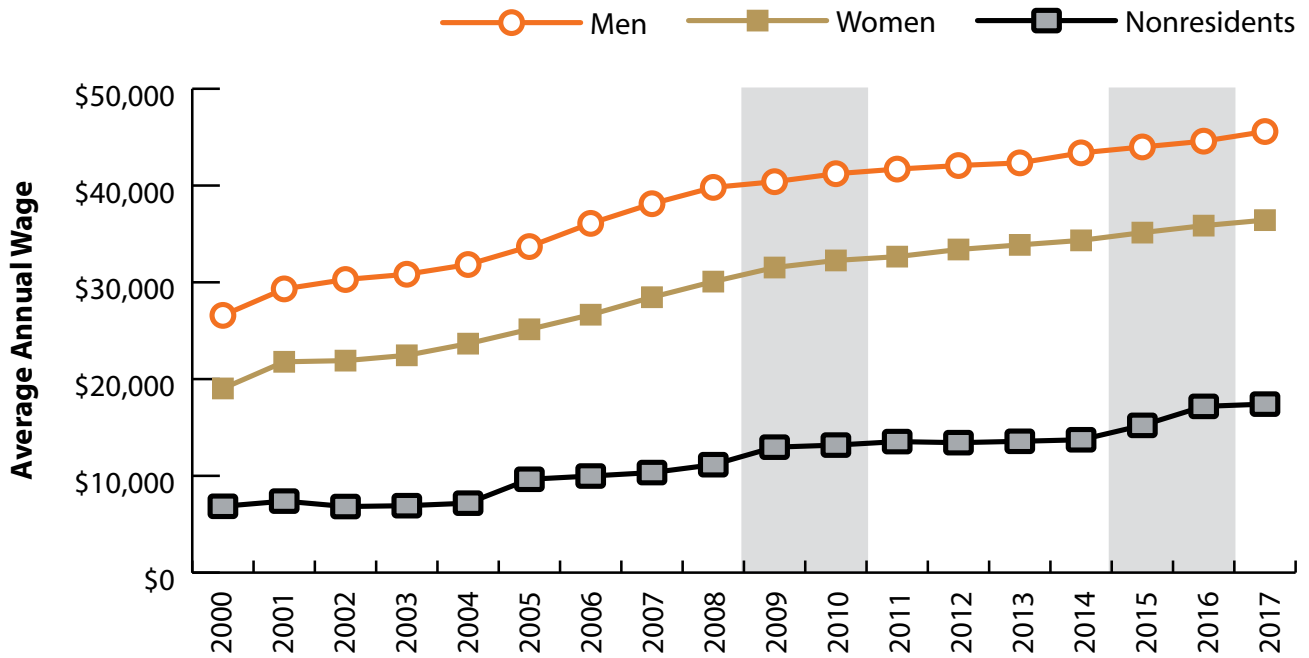


Figure: Average Annual Wage for Persons Working in Public Administration (NAICS 92) in Wyoming at Any Time by Age, 2000-2017

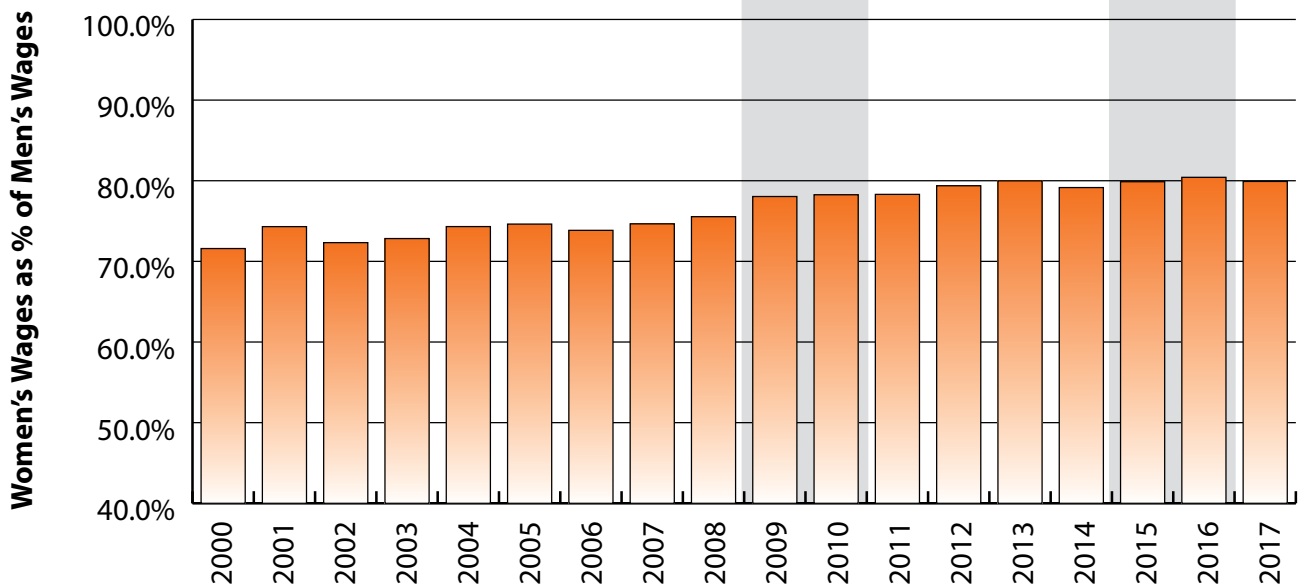


Figure: Women's Average Annual Wages as a Percent of Men's Wages for Persons Working in Public Administration (NAICS 92) in Wyoming at Any Time by Age, 2000-2017

Note: Nonresidents are individuals for whom demographic data are not available.  
 Shaded areas indicate periods of economic downturn: 2009Q1-2010Q1 and 2015Q2-2016Q4.  
 Source: Demographics of Persons Working in Wyoming by County, Industry, Age, & Gender, 2000-2017. Research & Planning, Wyoming Department of Workforce Services. Prepared by M. Moore, Research & Planning, WY DWS, 6/12/18.

## Average Earnings by Age and Gender in the 92 - Public Administration Industry in 2000

Gender	Age Group	Number	Age Percent	Gender Percent	Average Annual Wage	Average Quarters Worked	Average Annual Employers
Women	00-19	683	6.4	0.0	\$2,548	2.4	1.5
Women	20-24	823	7.8	0.0	\$8,640	3.0	1.8
Women	25-34	1,809	17.1	0.0	\$17,739	3.5	1.5
Women	35-44	2,788	26.3	0.0	\$21,815	3.7	1.4
Women	45-54	2,894	27.3	0.0	\$24,127	3.7	1.3
Women	55-64	1,248	11.8	0.0	\$21,278	3.6	1.2
Women	65-Up	341	3.2	0.0	\$9,979	3.0	1.1
Women	N/A	6	0.1	0.0	\$5,895	2.0	1.2
Women	Total	10,592	100.0	45.2	\$19,031	3.5	1.4
Men	00-19	815	6.8	0.0	\$2,835	2.4	1.5
Men	20-24	817	6.8	0.0	\$11,054	3.0	1.7
Men	25-34	2,084	17.5	0.0	\$24,477	3.6	1.4
Men	35-44	2,963	24.8	0.0	\$30,839	3.7	1.3
Men	45-54	3,283	27.5	0.0	\$33,871	3.8	1.2
Men	55-64	1,538	12.9	0.0	\$30,336	3.6	1.2
Men	65-Up	434	3.6	0.0	\$13,021	3.1	1.1
Men	N/A	4	0.0	0.0	\$26,069	3.0	1.0
Men	Total	11,938	100.0	51.0	\$26,582	3.5	1.3
N/A	N/A	881	100.0	0.0	\$6,854	1.7	1.1
N/A	Total	881	100.0	3.8	\$6,854	1.7	1.1
Total	00-19	1,498	6.4	0.0	\$2,704	2.4	1.5
Total	20-24	1,640	7.0	0.0	\$9,842	3.0	1.8
Total	25-34	3,893	16.6	0.0	\$21,346	3.5	1.5
Total	35-44	5,751	24.6	0.0	\$26,464	3.7	1.3
Total	45-54	6,177	26.4	0.0	\$29,306	3.7	1.2
Total	55-64	2,786	11.9	0.0	\$26,279	3.6	1.2
Total	65-Up	775	3.3	0.0	\$11,682	3.0	1.1
Total	N/A	891	3.8	0.0	\$6,933	1.7	1.1
Total	Total	23,411	100.0	100.0	\$22,423	3.4	1.3

Note: Persons worked any time during the year.

Industry Determination: Based on the industry of employment in which the person made the most money in the year.

N/A: Represents persons with demographic data that are unavailable.

N/A = Nonresidents, individuals for whom demographic data are not available.

Source: Demographics of Persons Working in Wyoming by County, Industry, Age, & Gender, 2000-2017.  
Research & Planning, Wyoming Department of Workforce Services.

Prepared by M. Moore, Research & Planning, WY DWS, 6/12/18.

## Average Earnings by Age and Gender in the 92 - Public Administration Industry in 2001

Gender	Age Group	Number	Age Percent	Gender Percent	Average Annual Wage	Average Quarters Worked	Average Annual Employers
Women	00-19	691	6.2	0.0	\$2,956	2.5	1.5
Women	20-24	913	8.2	0.0	\$9,189	3.0	1.8
Women	25-34	1,882	17.0	0.0	\$21,245	3.5	1.5
Women	35-44	2,746	24.7	0.0	\$24,871	3.7	1.4
Women	45-54	3,096	27.9	0.0	\$27,509	3.7	1.3
Women	55-64	1,406	12.7	0.0	\$24,181	3.6	1.2
Women	65-Up	360	3.2	0.0	\$10,811	3.0	1.1
Women	N/A	4	0.0	0.0	\$2,868	1.5	1.0
Women	Total	11,098	100.0	45.4	\$21,786	3.5	1.4
Men	00-19	850	6.9	0.0	\$2,965	2.4	1.5
Men	20-24	905	7.3	0.0	\$12,073	3.0	1.8
Men	25-34	2,168	17.5	0.0	\$28,421	3.5	1.4
Men	35-44	2,902	23.4	0.0	\$33,969	3.7	1.3
Men	45-54	3,405	27.4	0.0	\$37,253	3.8	1.2
Men	55-64	1,695	13.7	0.0	\$32,977	3.6	1.2
Men	65-Up	476	3.8	0.0	\$15,199	3.1	1.1
Men	N/A	4	0.0	0.0	\$17,787	2.3	1.0
Men	Total	12,405	100.0	50.7	\$29,318	3.5	1.3
N/A	N/A	942	100.0	0.0	\$7,389	1.5	1.1
N/A	Total	942	100.0	3.9	\$7,389	1.5	1.1
Total	00-19	1,541	6.3	0.0	\$2,961	2.5	1.5
Total	20-24	1,818	7.4	0.0	\$10,625	3.0	1.8
Total	25-34	4,050	16.6	0.0	\$25,087	3.5	1.5
Total	35-44	5,648	23.1	0.0	\$29,545	3.7	1.3
Total	45-54	6,501	26.6	0.0	\$32,613	3.7	1.2
Total	55-64	3,101	12.7	0.0	\$28,989	3.6	1.2
Total	65-Up	836	3.4	0.0	\$13,309	3.0	1.1
Total	N/A	950	3.9	0.0	\$7,414	1.5	1.1
Total	Total	24,445	100.0	100.0	\$25,053	3.4	1.3

Note: Persons worked any time during the year.

Industry Determination: Based on the industry of employment in which the person made the most money in the year.

N/A: Represents persons with demographic data that are unavailable.

N/A = Nonresidents, individuals for whom demographic data are not available.

Source: Demographics of Persons Working in Wyoming by County, Industry, Age, & Gender, 2000-2017.  
Research & Planning, Wyoming Department of Workforce Services.

Prepared by M. Moore, Research & Planning, WY DWS, 6/12/18.

## Average Earnings by Age and Gender in the 92 - Public Administration Industry in 2002

Gender	Age Group	Number	Age Percent	Gender Percent	Average Annual Wage	Average Quarters Worked	Average Annual Employers
Women	00-19	764	6.6	0.0	\$3,002	2.5	1.5
Women	20-24	1,000	8.6	0.0	\$10,266	3.1	1.8
Women	25-34	1,977	17.0	0.0	\$20,801	3.5	1.4
Women	35-44	2,695	23.2	0.0	\$25,144	3.7	1.4
Women	45-54	3,220	27.7	0.0	\$27,563	3.7	1.3
Women	55-64	1,591	13.7	0.0	\$25,172	3.6	1.2
Women	65-Up	376	3.2	0.0	\$11,724	3.0	1.1
Women	N/A	2	0.0	0.0	\$2,949	1.0	1.0
<b>Women</b>	<b>Total</b>	<b>11,625</b>	<b>100.0</b>	<b>46.2</b>	<b>\$21,906</b>	<b>3.5</b>	<b>1.4</b>
Men	00-19	871	6.9	0.0	\$3,000	2.3	1.4
Men	20-24	882	7.0	0.0	\$12,933	3.0	1.7
Men	25-34	2,238	17.7	0.0	\$28,168	3.6	1.4
Men	35-44	2,859	22.6	0.0	\$35,006	3.7	1.3
Men	45-54	3,432	27.1	0.0	\$38,700	3.8	1.2
Men	55-64	1,860	14.7	0.0	\$35,103	3.6	1.2
Men	65-Up	511	4.0	0.0	\$15,836	3.2	1.2
Men	N/A	4	0.0	0.0	\$5,315	1.5	1.0
<b>Men</b>	<b>Total</b>	<b>12,657</b>	<b>100.0</b>	<b>50.3</b>	<b>\$30,289</b>	<b>3.5</b>	<b>1.3</b>
N/A	N/A	886	100.0	0.0	\$6,829	1.6	1.1
<b>N/A</b>	<b>Total</b>	<b>886</b>	<b>100.0</b>	<b>3.5</b>	<b>\$6,829</b>	<b>1.6</b>	<b>1.1</b>
Total	00-19	1,635	6.5	0.0	\$3,001	2.4	1.5
Total	20-24	1,882	7.5	0.0	\$11,516	3.0	1.7
Total	25-34	4,215	16.7	0.0	\$24,713	3.5	1.4
Total	35-44	5,554	22.1	0.0	\$30,221	3.7	1.3
Total	45-54	6,652	26.4	0.0	\$33,309	3.7	1.2
Total	55-64	3,451	13.7	0.0	\$30,524	3.6	1.2
Total	65-Up	887	3.5	0.0	\$14,093	3.1	1.1
Total	N/A	892	3.5	0.0	\$6,813	1.6	1.1
<b>Total</b>	<b>Total</b>	<b>25,168</b>	<b>100.0</b>	<b>100.0</b>	<b>\$25,591</b>	<b>3.4</b>	<b>1.3</b>

Note: Persons worked any time during the year.

Industry Determination: Based on the industry of employment in which the person made the most money in the year.

N/A: Represents persons with demographic data that are unavailable.

N/A = Nonresidents, individuals for whom demographic data are not available.

Source: Demographics of Persons Working in Wyoming by County, Industry, Age, & Gender, 2000-2017.  
Research & Planning, Wyoming Department of Workforce Services.

Prepared by M. Moore, Research & Planning, WY DWS, 6/12/18.

## Average Earnings by Age and Gender in the 92 - Public Administration Industry in 2003

Gender	Age Group	Number	Age Percent	Gender Percent	Average Annual Wage	Average Quarters Worked	Average Annual Employers
Women	00-19	755	6.3	0.0	\$3,057	2.5	1.6
Women	20-24	1,008	8.4	0.0	\$10,494	3.1	1.7
Women	25-34	2,072	17.3	0.0	\$20,787	3.5	1.4
Women	35-44	2,602	21.7	0.0	\$25,876	3.7	1.3
Women	45-54	3,389	28.3	0.0	\$28,245	3.7	1.2
Women	55-64	1,757	14.7	0.0	\$25,667	3.6	1.2
Women	65-Up	406	3.4	0.0	\$12,704	3.1	1.1
Women	N/A	2	0.0	0.0	\$386	1.5	1.0
<b>Women</b>	<b>Total</b>	<b>11,991</b>	<b>100.0</b>	<b>46.1</b>	<b>\$22,456</b>	<b>3.5</b>	<b>1.3</b>
Men	00-19	872	6.7	0.0	\$2,885	2.3	1.4
Men	20-24	921	7.0	0.0	\$13,276	3.0	1.7
Men	25-34	2,295	17.5	0.0	\$28,715	3.5	1.3
Men	35-44	2,868	21.9	0.0	\$35,586	3.7	1.2
Men	45-54	3,489	26.7	0.0	\$38,670	3.7	1.2
Men	55-64	2,064	15.8	0.0	\$36,947	3.6	1.2
Men	65-Up	572	4.4	0.0	\$16,638	3.1	1.2
Men	N/A	3	0.0	0.0	\$2,819	1.3	1.3
<b>Men</b>	<b>Total</b>	<b>13,084</b>	<b>100.0</b>	<b>50.3</b>	<b>\$30,832</b>	<b>3.5</b>	<b>1.3</b>
N/A	N/A	958	100.0	0.0	\$6,916	1.5	1.0
<b>N/A</b>	<b>Total</b>	<b>958</b>	<b>100.0</b>	<b>3.7</b>	<b>\$6,916</b>	<b>1.5</b>	<b>1.0</b>
Total	00-19	1,627	6.2	0.0	\$2,965	2.4	1.5
Total	20-24	1,929	7.4	0.0	\$11,822	3.1	1.7
Total	25-34	4,367	16.8	0.0	\$24,953	3.5	1.4
Total	35-44	5,470	21.0	0.0	\$30,967	3.7	1.3
Total	45-54	6,878	26.4	0.0	\$33,533	3.7	1.2
Total	55-64	3,821	14.7	0.0	\$31,760	3.6	1.2
Total	65-Up	978	3.8	0.0	\$15,005	3.1	1.1
Total	N/A	963	3.7	0.0	\$6,889	1.5	1.0
<b>Total</b>	<b>Total</b>	<b>26,033</b>	<b>100.0</b>	<b>100.0</b>	<b>\$26,094</b>	<b>3.4</b>	<b>1.3</b>

Note: Persons worked any time during the year.

Industry Determination: Based on the industry of employment in which the person made the most money in the year.

N/A: Represents persons with demographic data that are unavailable.

N/A = Nonresidents, individuals for whom demographic data are not available.

Source: Demographics of Persons Working in Wyoming by County, Industry, Age, & Gender, 2000-2017.  
Research & Planning, Wyoming Department of Workforce Services.

Prepared by M. Moore, Research & Planning, WY DWS, 6/12/18.

## Average Earnings by Age and Gender in the 92 - Public Administration Industry in 2004

Gender	Age Group	Number	Age Percent	Gender Percent	Average Annual Wage	Average Quarters Worked	Average Annual Employers
Women	00-19	766	6.5	0.0	\$2,868	2.4	1.5
Women	20-24	874	7.4	0.0	\$10,517	3.0	1.8
Women	25-34	2,112	17.9	0.0	\$21,925	3.5	1.4
Women	35-44	2,444	20.7	0.0	\$26,908	3.7	1.3
Women	45-54	3,329	28.2	0.0	\$29,655	3.7	1.2
Women	55-64	1,878	15.9	0.0	\$27,725	3.7	1.2
Women	65-Up	412	3.5	0.0	\$13,140	3.0	1.1
Women	N/A	6	0.1	0.0	\$5,469	2.0	1.2
Women	Total	11,821	100.0	46.2	\$23,661	3.5	1.3
Men	00-19	876	6.7	0.0	\$2,554	2.3	1.4
Men	20-24	901	6.9	0.0	\$13,321	3.0	1.7
Men	25-34	2,291	17.5	0.0	\$29,677	3.6	1.4
Men	35-44	2,760	21.1	0.0	\$37,002	3.7	1.2
Men	45-54	3,446	26.3	0.0	\$39,905	3.8	1.2
Men	55-64	2,213	16.9	0.0	\$38,005	3.7	1.1
Men	65-Up	591	4.5	0.0	\$17,740	3.2	1.1
Men	N/A	3	0.0	0.0	\$4,821	1.3	1.3
Men	Total	13,081	100.0	51.1	\$31,838	3.5	1.3
N/A	N/A	673	100.0	0.0	\$7,177	1.7	1.0
N/A	Total	673	100.0	2.6	\$7,177	1.7	1.0
Total	00-19	1,642	6.4	0.0	\$2,700	2.3	1.5
Total	20-24	1,775	6.9	0.0	\$11,940	3.0	1.7
Total	25-34	4,403	17.2	0.0	\$25,959	3.5	1.4
Total	35-44	5,204	20.3	0.0	\$32,262	3.7	1.3
Total	45-54	6,775	26.5	0.0	\$34,869	3.8	1.2
Total	55-64	4,091	16.0	0.0	\$33,286	3.7	1.2
Total	65-Up	1,003	3.9	0.0	\$15,851	3.1	1.1
Total	N/A	682	2.7	0.0	\$7,152	1.7	1.0
Total	Total	25,575	100.0	100.0	\$27,410	3.5	1.3

Note: Persons worked any time during the year.

Industry Determination: Based on the industry of employment in which the person made the most money in the year.

N/A: Represents persons with demographic data that are unavailable.

N/A = Nonresidents, individuals for whom demographic data are not available.

Source: Demographics of Persons Working in Wyoming by County, Industry, Age, & Gender, 2000-2017.  
Research & Planning, Wyoming Department of Workforce Services.

Prepared by M. Moore, Research & Planning, WY DWS, 6/12/18.



## Average Earnings by Age and Gender in the 92 - Public Administration Industry in 2005

Gender	Age Group	Number	Age Percent	Gender Percent	Average Annual Wage	Average Quarters Worked	Average Annual Employers
Women	00-19	715	6.0	0.0	\$3,265	2.6	1.6
Women	20-24	893	7.5	0.0	\$11,102	3.1	1.7
Women	25-34	2,119	17.9	0.0	\$23,304	3.5	1.5
Women	35-44	2,411	20.4	0.0	\$28,180	3.7	1.4
Women	45-54	3,285	27.7	0.0	\$31,449	3.8	1.3
Women	55-64	2,004	16.9	0.0	\$29,309	3.7	1.2
Women	65-Up	410	3.5	0.0	\$14,741	3.1	1.1
Women	N/A	5	0.0	0.0	\$16,092	2.2	1.2
Women	Total	11,842	100.0	46.7	\$25,143	3.5	1.4
Men	00-19	799	6.1	0.0	\$3,390	2.4	1.5
Men	20-24	863	6.6	0.0	\$13,938	3.0	1.7
Men	25-34	2,304	17.6	0.0	\$31,735	3.6	1.4
Men	35-44	2,713	20.8	0.0	\$38,895	3.7	1.3
Men	45-54	3,452	26.4	0.0	\$41,447	3.8	1.2
Men	55-64	2,318	17.7	0.0	\$39,676	3.7	1.1
Men	65-Up	621	4.8	0.0	\$19,266	3.2	1.1
Men	N/A	1	0.0	0.0	\$8,171	1.0	1.0
Men	Total	13,071	100.0	51.5	\$33,692	3.6	1.3
N/A	N/A	456	100.0	0.0	\$9,646	2.1	1.1
N/A	Total	456	100.0	1.8	\$9,646	2.1	1.1
Total	00-19	1,514	6.0	0.0	\$3,331	2.5	1.6
Total	20-24	1,756	6.9	0.0	\$12,496	3.0	1.7
Total	25-34	4,423	17.4	0.0	\$27,696	3.6	1.4
Total	35-44	5,124	20.2	0.0	\$33,853	3.7	1.3
Total	45-54	6,737	26.6	0.0	\$36,572	3.8	1.2
Total	55-64	4,322	17.0	0.0	\$34,869	3.7	1.2
Total	65-Up	1,031	4.1	0.0	\$17,467	3.2	1.1
Total	N/A	462	1.8	0.0	\$9,713	2.1	1.1
Total	Total	25,369	100.0	100.0	\$29,269	3.5	1.3

Note: Persons worked any time during the year.

Industry Determination: Based on the industry of employment in which the person made the most money in the year.

N/A: Represents persons with demographic data that are unavailable.

N/A = Nonresidents, individuals for whom demographic data are not available.

Source: Demographics of Persons Working in Wyoming by County, Industry, Age, & Gender, 2000-2017.  
Research & Planning, Wyoming Department of Workforce Services.

Prepared by M. Moore, Research & Planning, WY DWS, 6/12/18.

## Average Earnings by Age and Gender in the 92 - Public Administration Industry in 2006

Gender	Age Group	Number	Age Percent	Gender Percent	Average Annual Wage	Average Quarters Worked	Average Annual Employers
Women	00-19	758	6.1	0.0	\$3,482	2.5	1.6
Women	20-24	966	7.8	0.0	\$12,338	3.1	1.7
Women	25-34	2,198	17.8	0.0	\$24,761	3.5	1.5
Women	35-44	2,466	20.0	0.0	\$30,399	3.7	1.4
Women	45-54	3,392	27.5	0.0	\$33,357	3.8	1.3
Women	55-64	2,106	17.1	0.0	\$30,709	3.7	1.2
Women	65-Up	462	3.7	0.0	\$15,984	3.1	1.1
Women	N/A	3	0.0	0.0	\$8,830	2.0	1.0
Women	Total	12,351	100.0	47.6	\$26,652	3.5	1.4
Men	00-19	790	6.0	0.0	\$3,278	2.4	1.4
Men	20-24	840	6.4	0.0	\$15,108	3.0	1.6
Men	25-34	2,309	17.7	0.0	\$34,247	3.6	1.4
Men	35-44	2,692	20.6	0.0	\$41,828	3.8	1.3
Men	45-54	3,392	25.9	0.0	\$44,148	3.8	1.2
Men	55-64	2,419	18.5	0.0	\$41,990	3.7	1.2
Men	65-Up	635	4.9	0.0	\$21,497	3.2	1.1
Men	N/A	1	0.0	0.0	\$48,008	4.0	1.0
Men	Total	13,078	100.0	50.4	\$36,090	3.6	1.3
N/A	N/A	494	100.0	0.0	\$9,982	2.0	1.1
N/A	Total	494	100.0	1.9	\$9,982	2.0	1.1
Total	00-19	1,548	6.0	0.0	\$3,378	2.5	1.5
Total	20-24	1,806	7.0	0.0	\$13,626	3.0	1.7
Total	25-34	4,507	17.4	0.0	\$29,621	3.6	1.4
Total	35-44	5,158	19.9	0.0	\$36,364	3.7	1.3
Total	45-54	6,784	26.2	0.0	\$38,753	3.8	1.2
Total	55-64	4,525	17.5	0.0	\$36,740	3.7	1.2
Total	65-Up	1,097	4.2	0.0	\$19,175	3.2	1.1
Total	N/A	498	1.9	0.0	\$10,051	2.0	1.1
Total	Total	25,923	100.0	100.0	\$31,095	3.5	1.3

Note: Persons worked any time during the year.

Industry Determination: Based on the industry of employment in which the person made the most money in the year.

N/A: Represents persons with demographic data that are unavailable.

N/A = Nonresidents, individuals for whom demographic data are not available.

Source: Demographics of Persons Working in Wyoming by County, Industry, Age, & Gender, 2000-2017.  
Research & Planning, Wyoming Department of Workforce Services.

Prepared by M. Moore, Research & Planning, WY DWS, 6/12/18.

## Average Earnings by Age and Gender in the 92 - Public Administration Industry in 2007

Gender	Age Group	Number	Age Percent	Gender Percent	Average Annual Wage	Average Quarters Worked	Average Annual Employers
Women	00-19	756	6.0	0.0	\$3,881	2.6	1.5
Women	20-24	935	7.4	0.0	\$13,544	3.1	1.7
Women	25-34	2,344	18.5	0.0	\$26,343	3.5	1.5
Women	35-44	2,504	19.7	0.0	\$32,235	3.7	1.4
Women	45-54	3,398	26.8	0.0	\$35,560	3.8	1.3
Women	55-64	2,220	17.5	0.0	\$33,064	3.7	1.2
Women	65-Up	537	4.2	0.0	\$16,868	3.1	1.2
Women	N/A	4	0.0	0.0	\$2,846	1.5	1.0
Women	Total	12,698	100.0	47.6	\$28,459	3.5	1.4
Men	00-19	873	6.5	0.0	\$3,888	2.5	1.5
Men	20-24	865	6.4	0.0	\$16,927	3.0	1.6
Men	25-34	2,420	18.0	0.0	\$36,031	3.6	1.4
Men	35-44	2,690	20.0	0.0	\$44,539	3.7	1.3
Men	45-54	3,369	25.0	0.0	\$47,155	3.8	1.2
Men	55-64	2,572	19.1	0.0	\$44,318	3.7	1.2
Men	65-Up	687	5.1	0.0	\$23,056	3.3	1.2
Men	N/A	2	0.0	0.0	\$33,592	3.5	1.0
Men	Total	13,478	100.0	50.5	\$38,121	3.6	1.3
N/A	N/A	506	100.0	0.0	\$10,338	2.0	1.1
N/A	Total	506	100.0	1.9	\$10,338	2.0	1.1
Total	00-19	1,629	6.1	0.0	\$3,885	2.6	1.5
Total	20-24	1,800	6.7	0.0	\$15,170	3.1	1.7
Total	25-34	4,764	17.9	0.0	\$31,265	3.5	1.4
Total	35-44	5,194	19.5	0.0	\$38,607	3.7	1.3
Total	45-54	6,767	25.4	0.0	\$41,333	3.8	1.2
Total	55-64	4,792	18.0	0.0	\$39,104	3.7	1.2
Total	65-Up	1,224	4.6	0.0	\$20,341	3.2	1.2
Total	N/A	512	1.9	0.0	\$10,370	2.0	1.1
Total	Total	26,682	100.0	100.0	\$32,996	3.5	1.3

Note: Persons worked any time during the year.

Industry Determination: Based on the industry of employment in which the person made the most money in the year.

N/A: Represents persons with demographic data that are unavailable.

N/A = Nonresidents, individuals for whom demographic data are not available.

Source: Demographics of Persons Working in Wyoming by County, Industry, Age, & Gender, 2000-2017.  
Research & Planning, Wyoming Department of Workforce Services.

Prepared by M. Moore, Research & Planning, WY DWS, 6/12/18.

## Average Earnings by Age and Gender in the 92 - Public Administration Industry in 2008

Gender	Age Group	Number	Age Percent	Gender Percent	Average Annual Wage	Average Quarters Worked	Average Annual Employers
Women	00-19	856	6.4	0.0	\$3,828	2.7	1.5
Women	20-24	1,067	8.0	0.0	\$14,363	3.1	1.6
Women	25-34	2,461	18.4	0.0	\$28,508	3.5	1.4
Women	35-44	2,549	19.1	0.0	\$34,655	3.7	1.3
Women	45-54	3,460	25.9	0.0	\$37,218	3.8	1.3
Women	55-64	2,395	17.9	0.0	\$35,864	3.7	1.2
Women	65-Up	574	4.3	0.0	\$17,664	3.2	1.2
Women	N/A	3	0.0	0.0	\$7,879	2.0	1.0
Women	Total	13,365	100.0	47.8	\$30,073	3.6	1.3
Men	00-19	880	6.2	0.0	\$4,115	2.5	1.4
Men	20-24	1,007	7.1	0.0	\$17,136	3.0	1.5
Men	25-34	2,625	18.6	0.0	\$37,412	3.6	1.4
Men	35-44	2,730	19.4	0.0	\$46,991	3.7	1.3
Men	45-54	3,381	24.0	0.0	\$49,374	3.8	1.2
Men	55-64	2,726	19.4	0.0	\$47,104	3.7	1.1
Men	65-Up	735	5.2	0.0	\$24,414	3.3	1.1
Men	N/A	1	0.0	0.0	\$58,252	4.0	1.0
Men	Total	14,085	100.0	50.3	\$39,809	3.6	1.3
N/A	N/A	531	100.0	0.0	\$11,152	2.1	1.1
N/A	Total	531	100.0	1.9	\$11,152	2.1	1.1
Total	00-19	1,736	6.2	0.0	\$3,974	2.6	1.5
Total	20-24	2,074	7.4	0.0	\$15,709	3.0	1.6
Total	25-34	5,086	18.2	0.0	\$33,104	3.6	1.4
Total	35-44	5,279	18.9	0.0	\$41,034	3.7	1.3
Total	45-54	6,841	24.4	0.0	\$43,226	3.8	1.2
Total	55-64	5,121	18.3	0.0	\$41,847	3.7	1.2
Total	65-Up	1,309	4.7	0.0	\$21,454	3.3	1.1
Total	N/A	535	1.9	0.0	\$11,222	2.1	1.1
Total	Total	27,981	100.0	100.0	\$34,615	3.5	1.3

Note: Persons worked any time during the year.

Industry Determination: Based on the industry of employment in which the person made the most money in the year.

N/A: Represents persons with demographic data that are unavailable.

N/A = Nonresidents, individuals for whom demographic data are not available.

Source: Demographics of Persons Working in Wyoming by County, Industry, Age, & Gender, 2000-2017.  
Research & Planning, Wyoming Department of Workforce Services.

Prepared by M. Moore, Research & Planning, WY DWS, 6/12/18.

## Average Earnings by Age and Gender in the 92 - Public Administration Industry in 2009

Gender	Age Group	Number	Age Percent	Gender Percent	Average Annual Wage	Average Quarters Worked	Average Annual Employers
Women	00-19	811	6.0	0.0	\$3,900	2.6	1.4
Women	20-24	1,012	7.5	0.0	\$14,253	3.1	1.5
Women	25-34	2,550	18.9	0.0	\$29,330	3.6	1.3
Women	35-44	2,606	19.3	0.0	\$36,336	3.7	1.3
Women	45-54	3,391	25.1	0.0	\$38,895	3.8	1.2
Women	55-64	2,527	18.7	0.0	\$37,606	3.7	1.2
Women	65-Up	608	4.5	0.0	\$19,491	3.2	1.1
Women	N/A	2	0.0	0.0	\$3,456	1.5	1.0
Women	Total	13,507	100.0	47.0	\$31,528	3.6	1.3
Men	00-19	893	6.1	0.0	\$4,272	2.5	1.4
Men	20-24	1,118	7.6	0.0	\$16,586	3.0	1.4
Men	25-34	2,806	19.1	0.0	\$37,329	3.5	1.3
Men	35-44	2,837	19.3	0.0	\$47,426	3.7	1.2
Men	45-54	3,443	23.4	0.0	\$50,253	3.8	1.2
Men	55-64	2,852	19.4	0.0	\$48,996	3.7	1.1
Men	65-Up	774	5.3	0.0	\$26,297	3.3	1.1
Men	N/A	1	0.0	0.0	\$60,401	4.0	1.0
Men	Total	14,724	100.0	51.2	\$40,398	3.5	1.2
N/A	N/A	514	100.0	0.0	\$12,964	2.2	1.0
N/A	Total	514	100.0	1.8	\$12,964	2.2	1.0
Total	00-19	1,704	5.9	0.0	\$4,095	2.5	1.4
Total	20-24	2,130	7.4	0.0	\$15,477	3.0	1.5
Total	25-34	5,356	18.6	0.0	\$33,521	3.5	1.3
Total	35-44	5,443	18.9	0.0	\$42,116	3.7	1.2
Total	45-54	6,834	23.8	0.0	\$44,617	3.8	1.2
Total	55-64	5,379	18.7	0.0	\$43,645	3.7	1.1
Total	65-Up	1,382	4.8	0.0	\$23,303	3.3	1.1
Total	N/A	517	1.8	0.0	\$13,019	2.2	1.0
Total	Total	28,745	100.0	100.0	\$35,740	3.5	1.2

Note: Persons worked any time during the year.

Industry Determination: Based on the industry of employment in which the person made the most money in the year.

N/A: Represents persons with demographic data that are unavailable.

N/A = Nonresidents, individuals for whom demographic data are not available.

Source: Demographics of Persons Working in Wyoming by County, Industry, Age, & Gender, 2000-2017.  
Research & Planning, Wyoming Department of Workforce Services.

Prepared by M. Moore, Research & Planning, WY DWS, 6/12/18.

## Average Earnings by Age and Gender in the 92 - Public Administration Industry in 2010

Gender	Age Group	Number	Age Percent	Gender Percent	Average Annual Wage	Average Quarters Worked	Average Annual Employers
Women	00-19	765	5.7	0.0	\$4,001	2.6	1.4
Women	20-24	952	7.0	0.0	\$13,946	3.0	1.5
Women	25-34	2,585	19.1	0.0	\$29,719	3.5	1.3
Women	35-44	2,572	19.0	0.0	\$37,362	3.7	1.3
Women	45-54	3,271	24.2	0.0	\$39,377	3.8	1.2
Women	55-64	2,721	20.1	0.0	\$38,337	3.7	1.2
Women	65-Up	639	4.7	0.0	\$21,096	3.2	1.1
Women	N/A	6	0.0	0.0	\$2,332	1.5	1.0
Women	Total	13,511	100.0	46.9	\$32,260	3.6	1.3
Men	00-19	794	5.4	0.0	\$3,905	2.4	1.3
Men	20-24	1,108	7.5	0.0	\$17,148	3.0	1.4
Men	25-34	2,887	19.5	0.0	\$38,158	3.6	1.3
Men	35-44	2,889	19.5	0.0	\$47,857	3.7	1.2
Men	45-54	3,393	22.9	0.0	\$50,651	3.8	1.2
Men	55-64	2,933	19.8	0.0	\$49,424	3.7	1.1
Men	65-Up	803	5.4	0.0	\$28,651	3.3	1.1
Men	N/A	1	0.0	0.0	\$61,387	4.0	1.0
Men	Total	14,808	100.0	51.4	\$41,222	3.6	1.2
N/A	N/A	480	100.0	0.0	\$13,178	2.2	1.0
N/A	Total	480	100.0	1.7	\$13,178	2.2	1.0
Total	00-19	1,559	5.4	0.0	\$3,952	2.5	1.4
Total	20-24	2,060	7.2	0.0	\$15,668	3.0	1.5
Total	25-34	5,472	19.0	0.0	\$34,172	3.6	1.3
Total	35-44	5,461	19.0	0.0	\$42,914	3.7	1.2
Total	45-54	6,664	23.1	0.0	\$45,117	3.8	1.2
Total	55-64	5,654	19.6	0.0	\$44,089	3.7	1.1
Total	65-Up	1,442	5.0	0.0	\$25,303	3.3	1.1
Total	N/A	487	1.7	0.0	\$13,143	2.1	1.0
Total	Total	28,799	100.0	100.0	\$36,550	3.5	1.2

Note: Persons worked any time during the year.

Industry Determination: Based on the industry of employment in which the person made the most money in the year.

N/A: Represents persons with demographic data that are unavailable.

N/A = Nonresidents, individuals for whom demographic data are not available.

Source: Demographics of Persons Working in Wyoming by County, Industry, Age, & Gender, 2000-2017.  
Research & Planning, Wyoming Department of Workforce Services.

Prepared by M. Moore, Research & Planning, WY DWS, 6/12/18.

## Average Earnings by Age and Gender in the 92 - Public Administration Industry in 2011

Gender	Age Group	Number	Age Percent	Gender Percent	Average Annual Wage	Average Quarters Worked	Average Annual Employers
Women	00-19	710	5.3	0.0	\$3,784	2.5	1.3
Women	20-24	935	6.9	0.0	\$14,177	3.1	1.5
Women	25-34	2,618	19.4	0.0	\$30,282	3.5	1.3
Women	35-44	2,567	19.1	0.0	\$37,571	3.7	1.3
Women	45-54	3,154	23.4	0.0	\$39,637	3.8	1.2
Women	55-64	2,793	20.7	0.0	\$38,684	3.7	1.1
Women	65-Up	692	5.1	0.0	\$21,986	3.3	1.1
Women	N/A	4	0.0	0.0	\$1,662	2.5	1.0
Women	Total	13,473	100.0	46.8	\$32,654	3.6	1.2
Men	00-19	716	4.8	0.0	\$3,815	2.4	1.3
Men	20-24	1,064	7.2	0.0	\$16,984	3.0	1.4
Men	25-34	2,943	19.9	0.0	\$38,883	3.6	1.3
Men	35-44	2,945	19.9	0.0	\$48,480	3.7	1.2
Men	45-54	3,268	22.1	0.0	\$50,968	3.8	1.2
Men	55-64	2,971	20.1	0.0	\$49,359	3.7	1.1
Men	65-Up	873	5.9	0.0	\$28,715	3.3	1.1
Men	N/A	1	0.0	0.0	\$62,728	4.0	1.0
Men	Total	14,781	100.0	51.3	\$41,699	3.6	1.2
N/A	N/A	538	100.0	0.0	\$13,539	2.1	1.0
N/A	Total	538	100.0	1.9	\$13,539	2.1	1.0
Total	00-19	1,426	5.0	0.0	\$3,800	2.5	1.3
Total	20-24	1,999	6.9	0.0	\$15,671	3.0	1.5
Total	25-34	5,561	19.3	0.0	\$34,834	3.5	1.3
Total	35-44	5,512	19.1	0.0	\$43,400	3.7	1.2
Total	45-54	6,422	22.3	0.0	\$45,403	3.8	1.2
Total	55-64	5,764	20.0	0.0	\$44,186	3.7	1.1
Total	65-Up	1,565	5.4	0.0	\$25,740	3.3	1.1
Total	N/A	543	1.9	0.0	\$13,542	2.1	1.0
Total	Total	28,792	100.0	100.0	\$36,940	3.5	1.2

Note: Persons worked any time during the year.

Industry Determination: Based on the industry of employment in which the person made the most money in the year.

N/A: Represents persons with demographic data that are unavailable.

N/A = Nonresidents, individuals for whom demographic data are not available.

Source: Demographics of Persons Working in Wyoming by County, Industry, Age, & Gender, 2000-2017.  
Research & Planning, Wyoming Department of Workforce Services.

Prepared by M. Moore, Research & Planning, WY DWS, 6/12/18.

## Average Earnings by Age and Gender in the 92 - Public Administration Industry in 2012

Gender	Age Group	Number	Age Percent	Gender Percent	Average Annual Wage	Average Quarters Worked	Average Annual Employers
Women	00-19	682	5.0	0.0	\$4,078	2.6	1.4
Women	20-24	951	7.0	0.0	\$14,234	3.1	1.6
Women	25-34	2,635	19.3	0.0	\$31,275	3.5	1.4
Women	35-44	2,690	19.7	0.0	\$38,028	3.7	1.3
Women	45-54	3,107	22.7	0.0	\$40,178	3.8	1.3
Women	55-64	2,874	21.0	0.0	\$39,403	3.7	1.2
Women	65-Up	728	5.3	0.0	\$23,775	3.3	1.1
Women	N/A	3	0.0	0.0	\$14,397	2.7	1.0
Women	Total	13,670	100.0	46.6	\$33,391	3.6	1.3
Men	00-19	734	4.8	0.0	\$3,949	2.4	1.3
Men	20-24	1,075	7.1	0.0	\$17,121	3.0	1.5
Men	25-34	3,018	19.9	0.0	\$39,138	3.5	1.3
Men	35-44	3,083	20.3	0.0	\$48,689	3.7	1.2
Men	45-54	3,275	21.6	0.0	\$51,606	3.8	1.2
Men	55-64	2,997	19.8	0.0	\$50,351	3.7	1.2
Men	65-Up	982	6.5	0.0	\$28,994	3.3	1.1
Men	N/A	2	0.0	0.0	\$31,587	2.5	1.5
Men	Total	15,166	100.0	51.7	\$42,066	3.5	1.2
N/A	N/A	508	100.0	0.0	\$13,428	2.1	1.1
N/A	Total	508	100.0	1.7	\$13,428	2.1	1.1
Total	00-19	1,416	4.8	0.0	\$4,011	2.5	1.3
Total	20-24	2,026	6.9	0.0	\$15,766	3.1	1.5
Total	25-34	5,653	19.3	0.0	\$35,473	3.5	1.3
Total	35-44	5,773	19.7	0.0	\$43,721	3.7	1.3
Total	45-54	6,382	21.7	0.0	\$46,042	3.8	1.2
Total	55-64	5,871	20.0	0.0	\$44,992	3.7	1.2
Total	65-Up	1,710	5.8	0.0	\$26,772	3.3	1.1
Total	N/A	513	1.7	0.0	\$13,505	2.2	1.1
Total	Total	29,344	100.0	100.0	\$37,529	3.5	1.3

Note: Persons worked any time during the year.

Industry Determination: Based on the industry of employment in which the person made the most money in the year.

N/A: Represents persons with demographic data that are unavailable.

N/A = Nonresidents, individuals for whom demographic data are not available.

Source: Demographics of Persons Working in Wyoming by County, Industry, Age, & Gender, 2000-2017.  
Research & Planning, Wyoming Department of Workforce Services.

Prepared by M. Moore, Research & Planning, WY DWS, 6/12/18.



## Average Earnings by Age and Gender in the 92 - Public Administration Industry in 2013

Gender	Age Group	Number	Age Percent	Gender Percent	Average Annual Wage	Average Quarters Worked	Average Annual Employers
Women	00-19	684	5.0	0.0	\$3,786	2.6	1.4
Women	20-24	931	6.8	0.0	\$14,935	3.2	1.6
Women	25-34	2,606	19.2	0.0	\$31,586	3.6	1.3
Women	35-44	2,735	20.1	0.0	\$38,689	3.7	1.3
Women	45-54	2,968	21.8	0.0	\$40,649	3.7	1.2
Women	55-64	2,926	21.5	0.0	\$40,087	3.7	1.2
Women	65-Up	748	5.5	0.0	\$24,032	3.3	1.1
Women	N/A	1	0.0	0.0	\$32,014	3.0	1.0
<b>Women</b>	<b>Total</b>	<b>13,599</b>	<b>100.0</b>	<b>46.6</b>	<b>\$33,868</b>	<b>3.6</b>	<b>1.3</b>
Men	00-19	686	4.6	0.0	\$4,067	2.5	1.3
Men	20-24	1,021	6.8	0.0	\$16,947	3.0	1.5
Men	25-34	3,041	20.2	0.0	\$39,306	3.6	1.3
Men	35-44	3,042	20.2	0.0	\$49,345	3.7	1.2
Men	45-54	3,224	21.4	0.0	\$51,577	3.7	1.2
Men	55-64	2,999	19.9	0.0	\$50,048	3.7	1.1
Men	65-Up	1,038	6.9	0.0	\$30,035	3.3	1.1
Men	N/A	1	0.0	0.0	\$63,690	4.0	1.0
<b>Men</b>	<b>Total</b>	<b>15,052</b>	<b>100.0</b>	<b>51.6</b>	<b>\$42,343</b>	<b>3.5</b>	<b>1.2</b>
N/A	N/A	540	100.0	0.0	\$13,570	2.1	1.0
<b>N/A</b>	<b>Total</b>	<b>540</b>	<b>100.0</b>	<b>1.8</b>	<b>\$13,570</b>	<b>2.1</b>	<b>1.0</b>
Total	00-19	1,370	4.7	0.0	\$3,927	2.5	1.3
Total	20-24	1,952	6.7	0.0	\$15,987	3.1	1.5
Total	25-34	5,647	19.3	0.0	\$35,743	3.6	1.3
Total	35-44	5,777	19.8	0.0	\$44,300	3.7	1.3
Total	45-54	6,192	21.2	0.0	\$46,339	3.7	1.2
Total	55-64	5,925	20.3	0.0	\$45,128	3.7	1.1
Total	65-Up	1,786	6.1	0.0	\$27,521	3.3	1.1
Total	N/A	542	1.9	0.0	\$13,697	2.1	1.0
<b>Total</b>	<b>Total</b>	<b>29,191</b>	<b>100.0</b>	<b>100.0</b>	<b>\$37,863</b>	<b>3.5</b>	<b>1.2</b>

Note: Persons worked any time during the year.

Industry Determination: Based on the industry of employment in which the person made the most money in the year.

N/A: Represents persons with demographic data that are unavailable.

N/A = Nonresidents, individuals for whom demographic data are not available.

Source: Demographics of Persons Working in Wyoming by County, Industry, Age, & Gender, 2000-2017.

Research & Planning, Wyoming Department of Workforce Services.

Prepared by M. Moore, Research & Planning, WY DWS, 6/12/18.

## Average Earnings by Age and Gender in the 92 - Public Administration Industry in 2014

Gender	Age Group	Number	Age Percent	Gender Percent	Average Annual Wage	Average Quarters Worked	Average Annual Employers
Women	00-19	680	5.1	0.0	\$4,007	2.6	1.4
Women	20-24	1,002	7.6	0.0	\$14,653	3.1	1.6
Women	25-34	2,495	18.8	0.0	\$31,735	3.5	1.3
Women	35-44	2,600	19.6	0.0	\$40,357	3.7	1.3
Women	45-54	2,842	21.5	0.0	\$41,310	3.8	1.2
Women	55-64	2,854	21.5	0.0	\$41,065	3.7	1.2
Women	65-Up	773	5.8	0.0	\$24,151	3.2	1.1
Women	Total	13,246	100.0	46.8	\$34,334	3.6	1.3
Men	00-19	743	5.1	0.0	\$4,325	2.4	1.4
Men	20-24	928	6.4	0.0	\$17,438	3.0	1.5
Men	25-34	2,910	20.0	0.0	\$40,032	3.6	1.3
Men	35-44	2,917	20.1	0.0	\$50,971	3.7	1.2
Men	45-54	3,048	21.0	0.0	\$53,549	3.8	1.2
Men	55-64	2,937	20.2	0.0	\$50,992	3.7	1.1
Men	65-Up	1,052	7.2	0.0	\$31,308	3.3	1.1
Men	N/A	2	0.0	0.0	\$33,297	3.0	1.0
Men	Total	14,537	100.0	51.3	\$43,376	3.6	1.2
N/A	N/A	544	100.0	0.0	\$13,728	2.1	1.1
N/A	Total	544	100.0	1.9	\$13,728	2.1	1.1
Total	00-19	1,423	5.0	0.0	\$4,173	2.5	1.4
Total	20-24	1,930	6.8	0.0	\$15,992	3.0	1.6
Total	25-34	5,405	19.1	0.0	\$36,202	3.5	1.3
Total	35-44	5,517	19.5	0.0	\$45,969	3.7	1.3
Total	45-54	5,890	20.8	0.0	\$47,643	3.8	1.2
Total	55-64	5,791	20.4	0.0	\$46,100	3.7	1.1
Total	65-Up	1,825	6.4	0.0	\$28,277	3.3	1.1
Total	N/A	546	1.9	0.0	\$13,800	2.1	1.1
Total	Total	28,327	100.0	100.0	\$38,578	3.5	1.3

Note: Persons worked any time during the year.

Industry Determination: Based on the industry of employment in which the person made the most money in the year.

N/A: Represents persons with demographic data that are unavailable.

N/A = Nonresidents, individuals for whom demographic data are not available.

Source: Demographics of Persons Working in Wyoming by County, Industry, Age, & Gender, 2000-2017.

Research & Planning, Wyoming Department of Workforce Services.

Prepared by M. Moore, Research & Planning, WY DWS, 6/12/18.

## Average Earnings by Age and Gender in the 92 - Public Administration Industry in 2015

Gender	Age Group	Number	Age Percent	Gender Percent	Average Annual Wage	Average Quarters Worked	Average Annual Employers
Women	00-19	694	5.2	0.0	\$4,315	2.6	1.4
Women	20-24	946	7.2	0.0	\$15,107	3.1	1.5
Women	25-34	2,524	19.1	0.0	\$32,084	3.5	1.3
Women	35-44	2,645	20.0	0.0	\$41,254	3.7	1.3
Women	45-54	2,758	20.9	0.0	\$42,890	3.8	1.2
Women	55-64	2,824	21.4	0.0	\$42,025	3.7	1.2
Women	65-Up	829	6.3	0.0	\$24,384	3.2	1.1
Women	N/A	2	0.0	0.0	\$1,206	1.0	1.0
Women	Total	13,222	100.0	46.6	\$35,136	3.6	1.3
Men	00-19	762	5.2	0.0	\$4,367	2.5	1.3
Men	20-24	980	6.7	0.0	\$18,082	3.0	1.5
Men	25-34	2,881	19.8	0.0	\$40,569	3.6	1.3
Men	35-44	2,906	19.9	0.0	\$52,687	3.8	1.2
Men	45-54	3,008	20.6	0.0	\$54,815	3.8	1.2
Men	55-64	2,956	20.3	0.0	\$51,473	3.7	1.2
Men	65-Up	1,083	7.4	0.0	\$30,575	3.3	1.1
Men	N/A	2	0.0	0.0	\$33,955	2.5	1.0
Men	Total	14,578	100.0	51.4	\$43,988	3.6	1.2
N/A	N/A	569	100.0	0.0	\$15,216	2.2	1.1
N/A	Total	569	100.0	2.0	\$15,216	2.2	1.1
Total	00-19	1,456	5.1	0.0	\$4,342	2.5	1.4
Total	20-24	1,926	6.8	0.0	\$16,621	3.0	1.5
Total	25-34	5,405	19.1	0.0	\$36,607	3.5	1.3
Total	35-44	5,551	19.6	0.0	\$47,239	3.7	1.3
Total	45-54	5,766	20.3	0.0	\$49,111	3.8	1.2
Total	55-64	5,780	20.4	0.0	\$46,857	3.7	1.2
Total	65-Up	1,912	6.7	0.0	\$27,891	3.3	1.1
Total	N/A	573	2.0	0.0	\$15,233	2.2	1.1
Total	Total	28,369	100.0	100.0	\$39,285	3.5	1.2

Note: Persons worked any time during the year.

Industry Determination: Based on the industry of employment in which the person made the most money in the year.

N/A: Represents persons with demographic data that are unavailable.

N/A = Nonresidents, individuals for whom demographic data are not available.

Source: Demographics of Persons Working in Wyoming by County, Industry, Age, & Gender, 2000-2017.  
Research & Planning, Wyoming Department of Workforce Services.

Prepared by M. Moore, Research & Planning, WY DWS, 6/12/18.

## Average Earnings by Age and Gender in the 92 - Public Administration Industry in 2016

Gender	Age Group	Number	Age Percent	Gender Percent	Average Annual Wage	Average Quarters Worked	Average Annual Employers
Women	00-19	660	5.1	0.0	\$4,140	2.7	1.3
Women	20-24	820	6.4	0.0	\$15,433	3.1	1.6
Women	25-34	2,475	19.3	0.0	\$32,489	3.5	1.3
Women	35-44	2,581	20.1	0.0	\$41,902	3.7	1.3
Women	45-54	2,668	20.8	0.0	\$44,081	3.8	1.2
Women	55-64	2,826	22.0	0.0	\$42,248	3.7	1.2
Women	65-Up	791	6.2	0.0	\$23,739	3.2	1.1
Women	Total	12,821	100.0	46.1	\$35,857	3.6	1.3
Men	00-19	682	4.7	0.0	\$4,344	2.5	1.3
Men	20-24	921	6.4	0.0	\$18,191	2.9	1.5
Men	25-34	2,862	19.9	0.0	\$41,047	3.5	1.3
Men	35-44	2,930	20.4	0.0	\$52,709	3.7	1.2
Men	45-54	2,994	20.8	0.0	\$55,283	3.8	1.2
Men	55-64	2,944	20.4	0.0	\$51,481	3.7	1.1
Men	65-Up	1,062	7.4	0.0	\$31,176	3.3	1.1
Men	N/A	2	0.0	0.0	\$34,933	3.5	1.0
Men	Total	14,397	100.0	51.8	\$44,585	3.6	1.2
N/A	N/A	593	100.0	0.0	\$17,179	2.3	1.1
N/A	Total	593	100.0	2.1	\$17,179	2.3	1.1
Total	00-19	1,342	4.8	0.0	\$4,243	2.6	1.3
Total	20-24	1,741	6.3	0.0	\$16,892	3.0	1.5
Total	25-34	5,337	19.2	0.0	\$37,078	3.5	1.3
Total	35-44	5,511	19.8	0.0	\$47,647	3.7	1.2
Total	45-54	5,662	20.4	0.0	\$50,004	3.8	1.2
Total	55-64	5,770	20.7	0.0	\$46,959	3.7	1.2
Total	65-Up	1,853	6.7	0.0	\$28,001	3.2	1.1
Total	N/A	595	2.1	0.0	\$17,239	2.3	1.1
Total	Total	27,811	100.0	100.0	\$39,977	3.5	1.2

Note: Persons worked any time during the year.

Industry Determination: Based on the industry of employment in which the person made the most money in the year.

N/A: Represents persons with demographic data that are unavailable.

N/A = Nonresidents, individuals for whom demographic data are not available.

Source: Demographics of Persons Working in Wyoming by County, Industry, Age, & Gender, 2000-2017.

Research & Planning, Wyoming Department of Workforce Services.

Prepared by M. Moore, Research & Planning, WY DWS, 6/12/18.

## Average Earnings by Age and Gender in the 92 - Public Administration Industry in 2017

Gender	Age Group	Number	Age Percent	Gender Percent	Average Annual Wage	Average Quarters Worked	Average Annual Employers
Women	00-19	663	5.3	0.0	\$4,439	2.7	1.5
Women	20-24	788	6.3	0.0	\$15,537	3.1	1.6
Women	25-34	2,366	18.9	0.0	\$33,351	3.5	1.4
Women	35-44	2,561	20.5	0.0	\$42,782	3.7	1.3
Women	45-54	2,595	20.8	0.0	\$44,802	3.8	1.2
Women	55-64	2,722	21.8	0.0	\$42,361	3.7	1.2
Women	65-Up	808	6.5	0.0	\$24,995	3.3	1.1
Women	Total	12,503	100.0	46.3	\$36,425	3.6	1.3
Men	00-19	709	5.1	0.0	\$4,570	2.6	1.3
Men	20-24	880	6.4	0.0	\$18,923	3.1	1.5
Men	25-34	2,675	19.3	0.0	\$42,447	3.6	1.3
Men	35-44	2,874	20.8	0.0	\$54,035	3.8	1.2
Men	45-54	2,858	20.7	0.0	\$56,404	3.8	1.2
Men	55-64	2,814	20.3	0.0	\$52,414	3.7	1.1
Men	65-Up	1,022	7.4	0.0	\$32,342	3.3	1.1
Men	N/A	2	0.0	0.0	\$42,387	2.5	1.0
Men	Total	13,834	100.0	51.3	\$45,581	3.6	1.2
N/A	N/A	641	100.0	0.0	\$17,412	2.3	1.1
N/A	Total	641	100.0	2.4	\$17,412	2.3	1.1
Total	00-19	1,372	5.1	0.0	\$4,506	2.7	1.4
Total	20-24	1,668	6.2	0.0	\$17,323	3.1	1.5
Total	25-34	5,041	18.7	0.0	\$38,178	3.6	1.3
Total	35-44	5,435	20.1	0.0	\$48,733	3.8	1.3
Total	45-54	5,453	20.2	0.0	\$50,883	3.8	1.2
Total	55-64	5,536	20.5	0.0	\$47,471	3.7	1.1
Total	65-Up	1,830	6.8	0.0	\$29,098	3.3	1.1
Total	N/A	643	2.4	0.0	\$17,490	2.3	1.1
Total	Total	26,978	100.0	100.0	\$40,668	3.6	1.2

Note: Persons worked any time during the year.

Industry Determination: Based on the industry of employment in which the person made the most money in the year.

N/A: Represents persons with demographic data that are unavailable.

N/A = Nonresidents, individuals for whom demographic data are not available.

Source: Demographics of Persons Working in Wyoming by County, Industry, Age, & Gender, 2000-2017.

Research & Planning, Wyoming Department of Workforce Services.

Prepared by M. Moore, Research & Planning, WY DWS, 6/12/18.