

Wyoming Leisure & Hospitality (NAICS 71-72) at a Glance, 2017

Demographics of Persons Working in Wyoming by County, Industry, Age, & Gender, 2000-2017

Table: Total Number of Persons Working in Leisure & Hospitality (NAICS 71-72) at Any Time by Gender and Age, 2016-2017

Gender	2016	2017	Change	
			N	%
Women	22,483	21,931	-552	-2.5
Men	18,678	17,870	-808	-4.3
Nonresidents	13,360	14,708	1,348	10.1
Total	54,521	54,509	-12	0.0

Age	2016	2017	Change	
			N	%
00-19	8,004	7,820	-184	-2.3
20-24	7,814	7,365	-449	-5.7
25-34	10,262	9,703	-559	-5.4
35-44	5,841	5,769	-72	-1.2
45-54	4,342	4,118	-224	-5.2
55-64	3,312	3,349	37	1.1
65-Up	1,570	1,662	92	5.9
Nonresidents	13,376	14,723	1,347	10.1
Total	54,521	54,509	-12	0.0

Women's Wages as % of Men's Wages
 Leisure & Hospitality (NAICS 71-72): 78.6%
 Total, All Industries: 62.7%

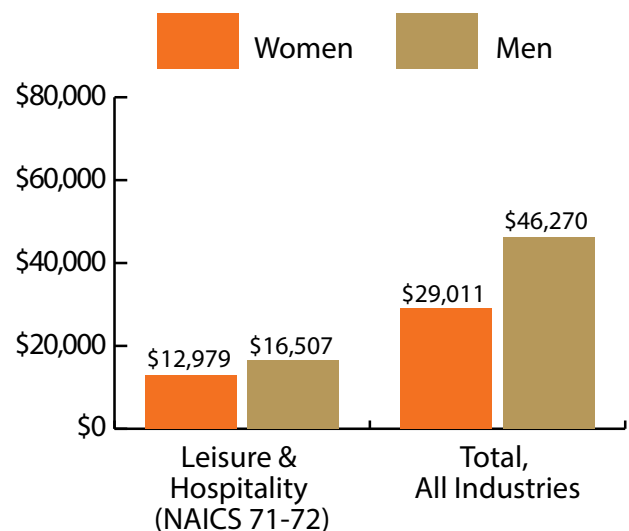


Figure: Average Annual Wages by Gender, 2017

Total = 54,509

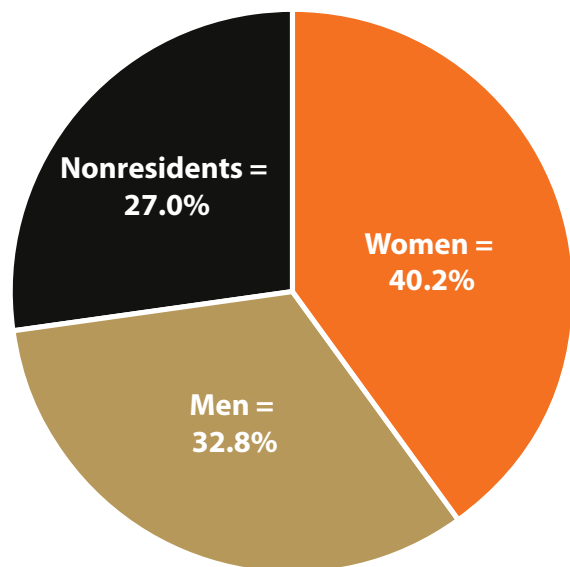


Figure: Persons Working by Gender, 2017

Total = 54,509

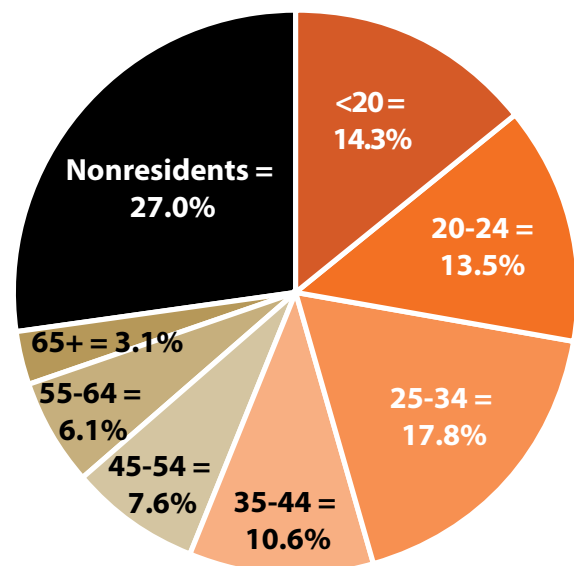


Figure: Persons Working by Age, 2017

Note: Nonresidents are individuals for whom demographic data are not available.
 Source: Demographics of Persons Working in Wyoming by County, Industry, Age, & Gender, 2000-2017. Research & Planning, Wyoming Department of Workforce Services. Prepared by M. Moore, Research & Planning, WY DWS, 6/12/18.

Persons Working in Leisure & Hospitality (NAICS 71-72) in Wyoming by Gender and Age, 2000-2017

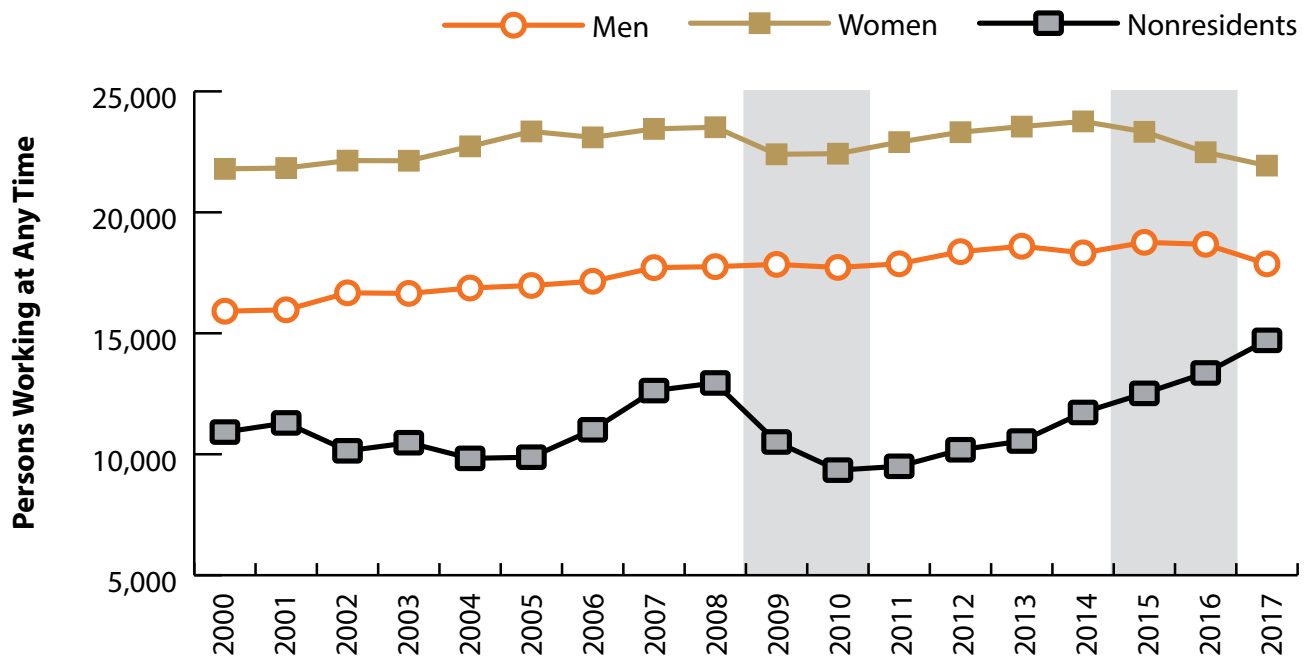


Figure: Persons Working in Leisure & Hospitality (NAICS 71-72) in Wyoming at Any Time by Gender, 2000-2017

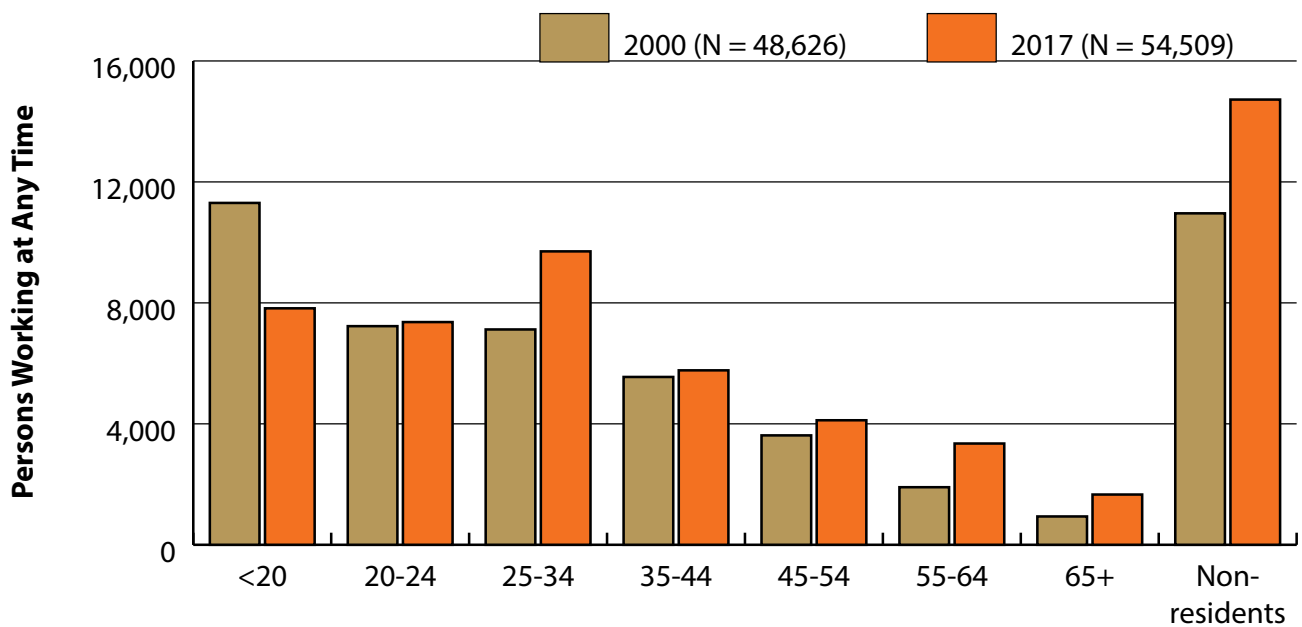


Figure: Persons Working in Leisure & Hospitality (NAICS 71-72) in Wyoming at Any Time by Age, 2000-2017

Note: Nonresidents are individuals for whom demographic data are not available.

Shaded areas indicate periods of economic downturn: 2009Q1-2010Q1 and 2015Q2-2016Q4.

Source: Demographics of Persons Working in Wyoming by County, Industry, Age, & Gender, 2000-2017. Research & Planning, Wyoming Department of Workforce Services. Prepared by M. Moore, Research & Planning, WY DWS, 6/12/18.

Wages for Persons Working in Leisure & Hospitality (NAICS 71-72) in Wyoming by Gender, 2000-2017

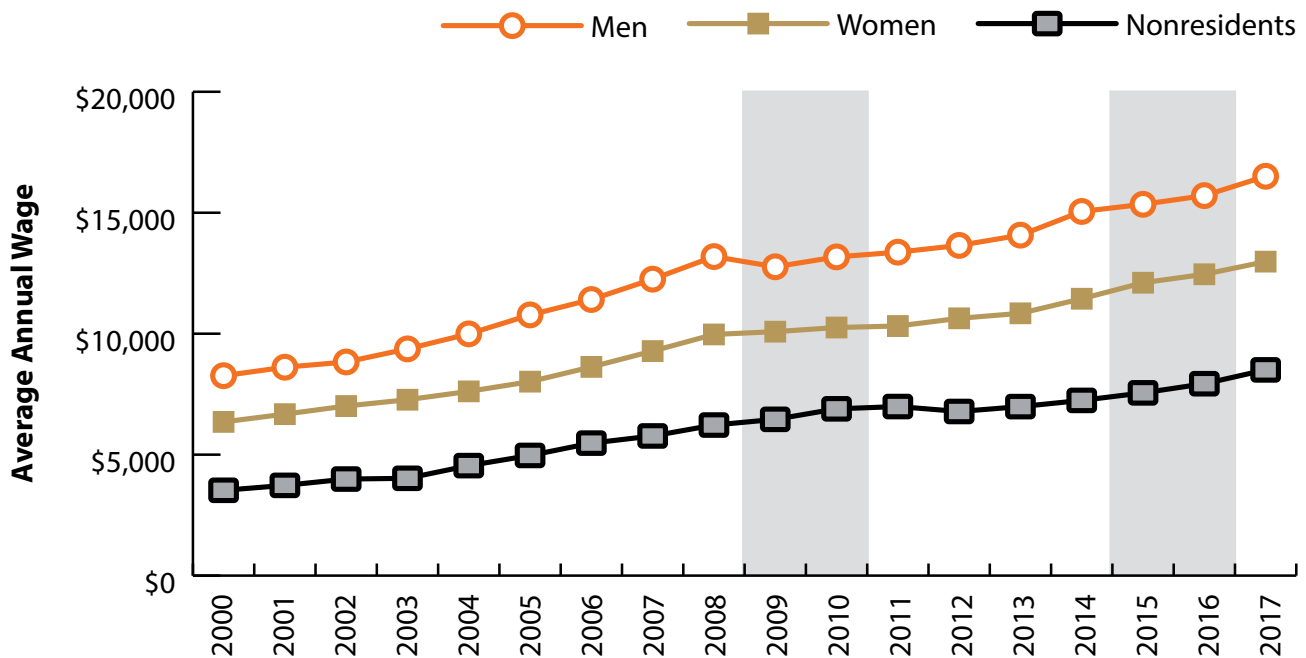


Figure: Average Annual Wage for Persons Working in Leisure & Hospitality (NAICS 71-72) in Wyoming at Any Time by Age, 2000-2017

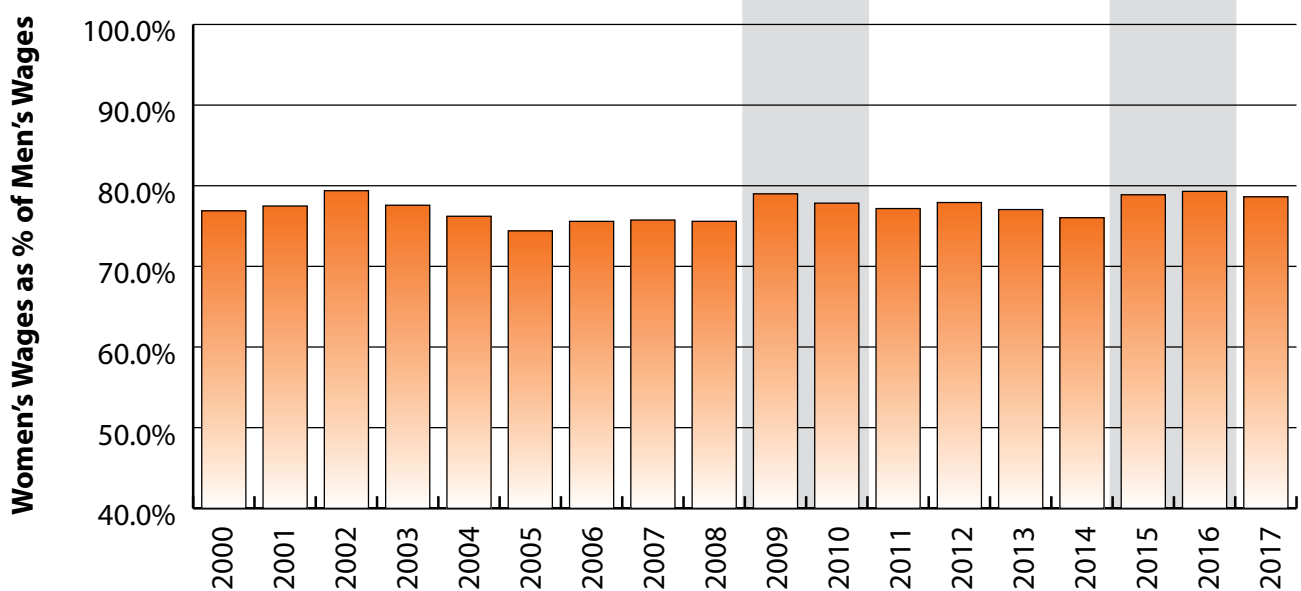


Figure: Women's Average Annual Wages as a Percent of Men's Wages for Persons Working in Leisure & Hospitality (NAICS 71-72) in Wyoming at Any Time by Age, 2000-2017

Note: Nonresidents are individuals for whom demographic data are not available.
 Shaded areas indicate periods of economic downturn: 2009Q1-2010Q1 and 2015Q2-2016Q4.
 Source: Demographics of Persons Working in Wyoming by County, Industry, Age, & Gender, 2000-2017. Research & Planning, Wyoming Department of Workforce Services. Prepared by M. Moore, Research & Planning, WY DWS, 6/12/18.

Average Earnings by Age and Gender in the 71 & 72 - Leisure & Hospitality Industry in 2000

Gender	Age Group	Number	Age Percent	Gender Percent	Average Annual Wage	Average Quarters Worked	Average Annual Employers
Women	00-19	6,308	28.9	0.0	\$2,717	2.6	1.7
Women	20-24	4,109	18.9	0.0	\$5,359	2.8	1.9
Women	25-34	3,882	17.8	0.0	\$7,888	3.0	1.8
Women	35-44	3,496	16.0	0.0	\$9,277	3.2	1.7
Women	45-54	2,294	10.5	0.0	\$9,901	3.2	1.5
Women	55-64	1,173	5.4	0.0	\$8,527	3.1	1.3
Women	65-Up	510	2.3	0.0	\$6,775	3.0	1.1
Women	N/A	24	0.1	0.0	\$4,357	1.9	1.1
Women	Total	21,796	100.0	44.8	\$6,354	2.9	1.7
Men	00-19	4,997	31.4	0.0	\$2,693	2.5	1.6
Men	20-24	3,121	19.6	0.0	\$5,952	2.7	1.9
Men	25-34	3,239	20.4	0.0	\$10,781	3.0	1.8
Men	35-44	2,054	12.9	0.0	\$14,432	3.0	1.6
Men	45-54	1,324	8.3	0.0	\$15,628	3.0	1.4
Men	55-64	731	4.6	0.0	\$14,469	2.9	1.2
Men	65-Up	427	2.7	0.0	\$8,314	2.8	1.2
Men	N/A	20	0.1	0.0	\$4,388	1.8	1.3
Men	Total	15,913	100.0	32.7	\$8,264	2.8	1.7
N/A	N/A	10,917	100.0	0.0	\$3,527	1.8	1.2
N/A	Total	10,917	100.0	22.5	\$3,527	1.8	1.2
Total	00-19	11,305	23.2	0.0	\$2,706	2.5	1.7
Total	20-24	7,230	14.9	0.0	\$5,615	2.8	1.9
Total	25-34	7,121	14.6	0.0	\$9,204	3.0	1.8
Total	35-44	5,550	11.4	0.0	\$11,185	3.1	1.6
Total	45-54	3,618	7.4	0.0	\$11,997	3.1	1.5
Total	55-64	1,904	3.9	0.0	\$10,808	3.0	1.3
Total	65-Up	937	1.9	0.0	\$7,476	2.9	1.1
Total	N/A	10,961	22.5	0.0	\$3,530	1.8	1.2
Total	Total	48,626	100.0	100.0	\$6,344	2.6	1.6

Note: Persons worked any time during the year.

Industry Determination: Based on the industry of employment in which the person made the most money in the year.

N/A: Represents persons with demographic data that are unavailable.

N/A = Nonresidents, individuals for whom demographic data are not available.

Source: Demographics of Persons Working in Wyoming by County, Industry, Age, & Gender, 2000-2017.
Research & Planning, Wyoming Department of Workforce Services.

Prepared by M. Moore, Research & Planning, WY DWS, 6/12/18.

Average Earnings by Age and Gender in the 71 & 72 - Leisure & Hospitality Industry in 2001

Gender	Age Group	Number	Age Percent	Gender Percent	Average Annual Wage	Average Quarters Worked	Average Annual Employers
Women	00-19	6,251	28.6	0.0	\$2,846	2.6	1.7
Women	20-24	4,233	19.4	0.0	\$5,857	2.7	2.0
Women	25-34	3,798	17.4	0.0	\$8,120	2.9	1.7
Women	35-44	3,420	15.7	0.0	\$9,697	3.1	1.6
Women	45-54	2,350	10.8	0.0	\$10,461	3.1	1.5
Women	55-64	1,215	5.6	0.0	\$8,828	3.1	1.3
Women	65-Up	548	2.5	0.0	\$6,812	2.9	1.2
Women	N/A	17	0.1	0.0	\$5,573	1.9	1.3
Women	Total	21,832	100.0	44.5	\$6,675	2.8	1.7
Men	00-19	5,006	31.3	0.0	\$2,995	2.5	1.7
Men	20-24	3,064	19.2	0.0	\$6,126	2.7	1.9
Men	25-34	3,259	20.4	0.0	\$11,169	2.9	1.8
Men	35-44	2,021	12.7	0.0	\$14,756	3.0	1.5
Men	45-54	1,393	8.7	0.0	\$15,795	3.0	1.4
Men	55-64	749	4.7	0.0	\$15,288	3.0	1.2
Men	65-Up	461	2.9	0.0	\$8,822	2.7	1.1
Men	N/A	17	0.1	0.0	\$3,995	1.9	1.1
Men	Total	15,970	100.0	32.5	\$8,614	2.7	1.7
N/A	N/A	11,295	100.0	0.0	\$3,730	1.7	1.2
N/A	Total	11,295	100.0	23.0	\$3,730	1.7	1.2
Total	00-19	11,257	22.9	0.0	\$2,913	2.5	1.7
Total	20-24	7,297	14.9	0.0	\$5,970	2.7	1.9
Total	25-34	7,057	14.4	0.0	\$9,528	2.9	1.8
Total	35-44	5,441	11.1	0.0	\$11,576	3.0	1.6
Total	45-54	3,743	7.6	0.0	\$12,446	3.1	1.5
Total	55-64	1,964	4.0	0.0	\$11,292	3.1	1.3
Total	65-Up	1,009	2.1	0.0	\$7,730	2.8	1.2
Total	N/A	11,329	23.1	0.0	\$3,733	1.7	1.2
Total	Total	49,097	100.0	100.0	\$6,628	2.6	1.6

Note: Persons worked any time during the year.

Industry Determination: Based on the industry of employment in which the person made the most money in the year.

N/A: Represents persons with demographic data that are unavailable.

N/A = Nonresidents, individuals for whom demographic data are not available.

Source: Demographics of Persons Working in Wyoming by County, Industry, Age, & Gender, 2000-2017.

Research & Planning, Wyoming Department of Workforce Services.

Prepared by M. Moore, Research & Planning, WY DWS, 6/12/18.

Average Earnings by Age and Gender in the 71 & 72 - Leisure & Hospitality Industry in 2002

Gender	Age Group	Number	Age Percent	Gender Percent	Average Annual Wage	Average Quarters Worked	Average Annual Employers
Women	00-19	6,075	27.4	0.0	\$2,935	2.6	1.7
Women	20-24	4,507	20.4	0.0	\$5,709	2.8	1.9
Women	25-34	3,927	17.7	0.0	\$8,453	2.9	1.7
Women	35-44	3,408	15.4	0.0	\$10,062	3.1	1.6
Women	45-54	2,419	10.9	0.0	\$10,938	3.2	1.5
Women	55-64	1,253	5.7	0.0	\$10,501	3.1	1.3
Women	65-Up	540	2.4	0.0	\$8,274	3.1	1.2
Women	N/A	9	0.0	0.0	\$6,575	2.0	1.2
Women	Total	22,138	100.0	45.2	\$7,010	2.9	1.7
Men	00-19	4,930	29.6	0.0	\$2,876	2.5	1.6
Men	20-24	3,360	20.2	0.0	\$6,323	2.7	1.8
Men	25-34	3,441	20.6	0.0	\$11,298	2.9	1.7
Men	35-44	2,138	12.8	0.0	\$14,582	2.9	1.5
Men	45-54	1,546	9.3	0.0	\$16,256	3.0	1.4
Men	55-64	789	4.7	0.0	\$15,459	3.0	1.2
Men	65-Up	456	2.7	0.0	\$9,600	2.8	1.1
Men	N/A	12	0.1	0.0	\$3,853	1.7	1.2
Men	Total	16,672	100.0	34.1	\$8,831	2.8	1.6
N/A	N/A	10,142	100.0	0.0	\$3,991	1.8	1.2
N/A	Total	10,142	100.0	20.7	\$3,991	1.8	1.2
Total	00-19	11,005	22.5	0.0	\$2,908	2.6	1.7
Total	20-24	7,867	16.1	0.0	\$5,971	2.7	1.9
Total	25-34	7,368	15.1	0.0	\$9,782	2.9	1.7
Total	35-44	5,546	11.3	0.0	\$11,804	3.0	1.6
Total	45-54	3,965	8.1	0.0	\$13,012	3.1	1.4
Total	55-64	2,042	4.2	0.0	\$12,417	3.1	1.3
Total	65-Up	996	2.0	0.0	\$8,881	3.0	1.1
Total	N/A	10,163	20.8	0.0	\$3,994	1.8	1.2
Total	Total	48,952	100.0	100.0	\$7,005	2.6	1.5

Note: Persons worked any time during the year.

Industry Determination: Based on the industry of employment in which the person made the most money in the year.

N/A: Represents persons with demographic data that are unavailable.

N/A = Nonresidents, individuals for whom demographic data are not available.

Source: Demographics of Persons Working in Wyoming by County, Industry, Age, & Gender, 2000-2017.
Research & Planning, Wyoming Department of Workforce Services.

Prepared by M. Moore, Research & Planning, WY DWS, 6/12/18.

Average Earnings by Age and Gender in the 71 & 72 - Leisure & Hospitality Industry in 2003

Gender	Age Group	Number	Age Percent	Gender Percent	Average Annual Wage	Average Quarters Worked	Average Annual Employers
Women	00-19	5,824	26.3	0.0	\$2,942	2.6	1.7
Women	20-24	4,524	20.4	0.0	\$5,797	2.8	1.8
Women	25-34	4,096	18.5	0.0	\$8,835	2.9	1.7
Women	35-44	3,310	15.0	0.0	\$10,227	3.1	1.6
Women	45-54	2,522	11.4	0.0	\$11,703	3.2	1.4
Women	55-64	1,248	5.6	0.0	\$10,545	3.1	1.3
Women	65-Up	595	2.7	0.0	\$8,030	3.1	1.1
Women	N/A	13	0.1	0.0	\$4,283	1.5	1.0
Women	Total	22,132	100.0	44.9	\$7,271	2.9	1.6
Men	00-19	4,570	27.4	0.0	\$2,876	2.5	1.6
Men	20-24	3,371	20.2	0.0	\$6,501	2.7	1.9
Men	25-34	3,593	21.6	0.0	\$11,843	2.9	1.8
Men	35-44	2,128	12.8	0.0	\$14,801	3.0	1.5
Men	45-54	1,598	9.6	0.0	\$16,718	3.0	1.4
Men	55-64	912	5.5	0.0	\$17,368	2.9	1.3
Men	65-Up	469	2.8	0.0	\$9,222	2.9	1.2
Men	N/A	8	0.0	0.0	\$3,973	1.9	1.0
Men	Total	16,649	100.0	33.8	\$9,371	2.8	1.6
N/A	N/A	10,476	100.0	0.0	\$4,022	1.8	1.2
N/A	Total	10,476	100.0	21.3	\$4,022	1.8	1.2
Total	00-19	10,394	21.1	0.0	\$2,913	2.5	1.6
Total	20-24	7,895	16.0	0.0	\$6,098	2.8	1.9
Total	25-34	7,689	15.6	0.0	\$10,240	2.9	1.7
Total	35-44	5,438	11.0	0.0	\$12,017	3.0	1.5
Total	45-54	4,120	8.4	0.0	\$13,648	3.1	1.4
Total	55-64	2,160	4.4	0.0	\$13,426	3.0	1.3
Total	65-Up	1,064	2.2	0.0	\$8,555	3.0	1.2
Total	N/A	10,497	21.3	0.0	\$4,023	1.8	1.2
Total	Total	49,257	100.0	100.0	\$7,290	2.6	1.5

Note: Persons worked any time during the year.

Industry Determination: Based on the industry of employment in which the person made the most money in the year.

N/A: Represents persons with demographic data that are unavailable.

N/A = Nonresidents, individuals for whom demographic data are not available.

Source: Demographics of Persons Working in Wyoming by County, Industry, Age, & Gender, 2000-2017.

Research & Planning, Wyoming Department of Workforce Services.

Prepared by M. Moore, Research & Planning, WY DWS, 6/12/18.

Average Earnings by Age and Gender in the 71 & 72 - Leisure & Hospitality Industry in 2004

Gender	Age Group	Number	Age Percent	Gender Percent	Average Annual Wage	Average Quarters Worked	Average Annual Employers
Women	00-19	6,090	26.8	0.0	\$3,030	2.6	1.7
Women	20-24	4,665	20.5	0.0	\$6,222	2.8	1.9
Women	25-34	4,222	18.6	0.0	\$9,348	3.0	1.8
Women	35-44	3,218	14.2	0.0	\$10,946	3.1	1.6
Women	45-54	2,585	11.4	0.0	\$12,021	3.2	1.4
Women	55-64	1,326	5.8	0.0	\$11,150	3.2	1.3
Women	65-Up	612	2.7	0.0	\$8,157	3.0	1.1
Women	N/A	9	0.0	0.0	\$7,077	1.9	1.1
Women	Total	22,727	100.0	46.0	\$7,616	2.9	1.7
Men	00-19	4,630	27.4	0.0	\$3,185	2.5	1.6
Men	20-24	3,388	20.1	0.0	\$6,721	2.7	1.9
Men	25-34	3,626	21.5	0.0	\$12,300	3.0	1.7
Men	35-44	2,142	12.7	0.0	\$15,916	3.1	1.6
Men	45-54	1,654	9.8	0.0	\$18,466	3.1	1.4
Men	55-64	931	5.5	0.0	\$18,377	3.0	1.2
Men	65-Up	489	2.9	0.0	\$9,585	2.9	1.1
Men	N/A	11	0.1	0.0	\$3,239	1.6	1.1
Men	Total	16,871	100.0	34.1	\$9,992	2.8	1.6
N/A	N/A	9,830	100.0	0.0	\$4,547	1.9	1.2
N/A	Total	9,830	100.0	19.9	\$4,547	1.9	1.2
Total	00-19	10,720	21.7	0.0	\$3,097	2.6	1.7
Total	20-24	8,053	16.3	0.0	\$6,432	2.8	1.9
Total	25-34	7,848	15.9	0.0	\$10,712	3.0	1.7
Total	35-44	5,360	10.8	0.0	\$12,932	3.1	1.6
Total	45-54	4,239	8.6	0.0	\$14,536	3.2	1.4
Total	55-64	2,257	4.6	0.0	\$14,131	3.1	1.3
Total	65-Up	1,101	2.2	0.0	\$8,791	3.0	1.1
Total	N/A	9,850	19.9	0.0	\$4,548	1.9	1.2
Total	Total	49,428	100.0	100.0	\$7,817	2.7	1.6

Note: Persons worked any time during the year.

Industry Determination: Based on the industry of employment in which the person made the most money in the year.

N/A: Represents persons with demographic data that are unavailable.

N/A = Nonresidents, individuals for whom demographic data are not available.

Source: Demographics of Persons Working in Wyoming by County, Industry, Age, & Gender, 2000-2017.
Research & Planning, Wyoming Department of Workforce Services.

Prepared by M. Moore, Research & Planning, WY DWS, 6/12/18.

Average Earnings by Age and Gender in the 71 & 72 - Leisure & Hospitality Industry in 2005

Gender	Age Group	Number	Age Percent	Gender Percent	Average Annual Wage	Average Quarters Worked	Average Annual Employers
Women	00-19	6,339	27.2	0.0	\$3,205	2.6	1.8
Women	20-24	4,763	20.4	0.0	\$6,666	2.9	2.0
Women	25-34	4,295	18.4	0.0	\$9,505	3.0	1.8
Women	35-44	3,207	13.7	0.0	\$11,880	3.2	1.7
Women	45-54	2,767	11.9	0.0	\$12,523	3.2	1.5
Women	55-64	1,343	5.8	0.0	\$11,962	3.2	1.3
Women	65-Up	623	2.7	0.0	\$8,658	3.0	1.2
Women	N/A	7	0.0	0.0	\$10,608	2.3	1.0
Women	Total	23,344	100.0	46.5	\$8,018	2.9	1.7
Men	00-19	4,756	28.0	0.0	\$3,158	2.5	1.7
Men	20-24	3,247	19.1	0.0	\$7,276	2.8	1.9
Men	25-34	3,676	21.7	0.0	\$12,981	3.0	1.8
Men	35-44	2,114	12.5	0.0	\$17,650	3.1	1.6
Men	45-54	1,713	10.1	0.0	\$19,830	3.1	1.4
Men	55-64	952	5.6	0.0	\$21,123	3.1	1.3
Men	65-Up	510	3.0	0.0	\$10,128	2.8	1.1
Men	N/A	8	0.0	0.0	\$2,815	1.8	1.0
Men	Total	16,976	100.0	33.8	\$10,777	2.8	1.7
N/A	N/A	9,878	100.0	0.0	\$4,967	2.0	1.2
N/A	Total	9,878	100.0	19.7	\$4,967	2.0	1.2
Total	00-19	11,095	22.1	0.0	\$3,185	2.6	1.7
Total	20-24	8,010	16.0	0.0	\$6,913	2.8	1.9
Total	25-34	7,971	15.9	0.0	\$11,108	3.0	1.8
Total	35-44	5,321	10.6	0.0	\$14,173	3.2	1.6
Total	45-54	4,480	8.9	0.0	\$15,317	3.2	1.5
Total	55-64	2,295	4.6	0.0	\$15,762	3.2	1.3
Total	65-Up	1,133	2.3	0.0	\$9,320	2.9	1.2
Total	N/A	9,893	19.7	0.0	\$4,969	2.0	1.2
Total	Total	50,198	100.0	100.0	\$8,350	2.7	1.6

Note: Persons worked any time during the year.

Industry Determination: Based on the industry of employment in which the person made the most money in the year.

N/A: Represents persons with demographic data that are unavailable.

N/A = Nonresidents, individuals for whom demographic data are not available.

Source: Demographics of Persons Working in Wyoming by County, Industry, Age, & Gender, 2000-2017.
Research & Planning, Wyoming Department of Workforce Services.

Prepared by M. Moore, Research & Planning, WY DWS, 6/12/18.

Average Earnings by Age and Gender in the 71 & 72 - Leisure & Hospitality Industry in 2006

Gender	Age Group	Number	Age Percent	Gender Percent	Average Annual Wage	Average Quarters Worked	Average Annual Employers
Women	00-19	6,284	27.2	0.0	\$3,426	2.6	1.8
Women	20-24	4,504	19.5	0.0	\$7,151	2.8	1.9
Women	25-34	4,451	19.3	0.0	\$10,273	3.0	1.8
Women	35-44	3,137	13.6	0.0	\$12,425	3.1	1.7
Women	45-54	2,669	11.6	0.0	\$13,773	3.2	1.5
Women	55-64	1,411	6.1	0.0	\$12,849	3.2	1.3
Women	65-Up	628	2.7	0.0	\$9,269	3.1	1.2
Women	N/A	14	0.1	0.0	\$6,494	1.7	1.1
Women	Total	23,098	100.0	45.1	\$8,626	2.9	1.7
Men	00-19	4,825	28.1	0.0	\$3,355	2.5	1.7
Men	20-24	3,145	18.3	0.0	\$7,785	2.7	1.9
Men	25-34	3,630	21.2	0.0	\$14,009	3.0	1.8
Men	35-44	2,146	12.5	0.0	\$18,511	3.1	1.6
Men	45-54	1,779	10.4	0.0	\$19,897	3.1	1.4
Men	55-64	1,053	6.1	0.0	\$21,299	3.1	1.3
Men	65-Up	561	3.3	0.0	\$11,753	2.8	1.2
Men	N/A	10	0.1	0.0	\$4,604	1.6	1.1
Men	Total	17,149	100.0	33.5	\$11,412	2.8	1.7
N/A	N/A	11,011	100.0	0.0	\$5,477	2.0	1.3
N/A	Total	11,011	100.0	21.5	\$5,477	2.0	1.3
Total	00-19	11,109	21.7	0.0	\$3,395	2.6	1.7
Total	20-24	7,649	14.9	0.0	\$7,412	2.8	1.9
Total	25-34	8,081	15.8	0.0	\$11,951	3.0	1.8
Total	35-44	5,283	10.3	0.0	\$14,897	3.1	1.7
Total	45-54	4,448	8.7	0.0	\$16,222	3.2	1.5
Total	55-64	2,464	4.8	0.0	\$16,460	3.2	1.3
Total	65-Up	1,189	2.3	0.0	\$10,441	3.0	1.2
Total	N/A	11,035	21.5	0.0	\$5,477	2.0	1.3
Total	Total	51,258	100.0	100.0	\$8,882	2.7	1.6

Note: Persons worked any time during the year.

Industry Determination: Based on the industry of employment in which the person made the most money in the year.

N/A: Represents persons with demographic data that are unavailable.

N/A = Nonresidents, individuals for whom demographic data are not available.

Source: Demographics of Persons Working in Wyoming by County, Industry, Age, & Gender, 2000-2017.
Research & Planning, Wyoming Department of Workforce Services.

Prepared by M. Moore, Research & Planning, WY DWS, 6/12/18.

Average Earnings by Age and Gender in the 71 & 72 - Leisure & Hospitality Industry in 2007

Gender	Age Group	Number	Age Percent	Gender Percent	Average Annual Wage	Average Quarters Worked	Average Annual Employers
Women	00-19	6,095	26.0	0.0	\$3,603	2.6	1.8
Women	20-24	4,688	20.0	0.0	\$7,640	2.8	1.9
Women	25-34	4,582	19.5	0.0	\$11,052	3.0	1.8
Women	35-44	3,051	13.0	0.0	\$13,423	3.1	1.7
Women	45-54	2,832	12.1	0.0	\$14,553	3.2	1.5
Women	55-64	1,524	6.5	0.0	\$13,464	3.2	1.3
Women	65-Up	665	2.8	0.0	\$9,742	3.1	1.2
Women	N/A	12	0.1	0.0	\$6,410	1.8	1.1
Women	Total	23,449	100.0	43.6	\$9,282	2.9	1.7
Men	00-19	4,872	27.5	0.0	\$3,545	2.5	1.7
Men	20-24	3,266	18.4	0.0	\$8,242	2.7	1.9
Men	25-34	3,777	21.3	0.0	\$14,871	3.0	1.8
Men	35-44	2,296	13.0	0.0	\$19,857	3.1	1.6
Men	45-54	1,810	10.2	0.0	\$20,984	3.1	1.5
Men	55-64	1,094	6.2	0.0	\$22,884	3.1	1.3
Men	65-Up	587	3.3	0.0	\$13,710	2.9	1.1
Men	N/A	12	0.1	0.0	\$3,854	1.7	1.0
Men	Total	17,714	100.0	32.9	\$12,254	2.8	1.7
N/A	N/A	12,631	100.0	0.0	\$5,773	1.9	1.3
N/A	Total	12,631	100.0	23.5	\$5,773	1.9	1.3
Total	00-19	10,967	20.4	0.0	\$3,578	2.6	1.7
Total	20-24	7,954	14.8	0.0	\$7,887	2.8	1.9
Total	25-34	8,359	15.5	0.0	\$12,778	3.0	1.8
Total	35-44	5,347	9.9	0.0	\$16,186	3.1	1.7
Total	45-54	4,642	8.6	0.0	\$17,060	3.1	1.5
Total	55-64	2,618	4.9	0.0	\$17,401	3.2	1.3
Total	65-Up	1,252	2.3	0.0	\$11,602	3.0	1.2
Total	N/A	12,655	23.5	0.0	\$5,772	1.9	1.3
Total	Total	53,794	100.0	100.0	\$9,437	2.7	1.6

Note: Persons worked any time during the year.

Industry Determination: Based on the industry of employment in which the person made the most money in the year.

N/A: Represents persons with demographic data that are unavailable.

N/A = Nonresidents, individuals for whom demographic data are not available.

Source: Demographics of Persons Working in Wyoming by County, Industry, Age, & Gender, 2000-2017.

Research & Planning, Wyoming Department of Workforce Services.

Prepared by M. Moore, Research & Planning, WY DWS, 6/12/18.

Average Earnings by Age and Gender in the 71 & 72 - Leisure & Hospitality Industry in 2008

Gender	Age Group	Number	Age Percent	Gender Percent	Average Annual Wage	Average Quarters Worked	Average Annual Employers
Women	00-19	5,774	24.6	0.0	\$3,775	2.6	1.7
Women	20-24	4,774	20.3	0.0	\$7,924	2.8	1.9
Women	25-34	4,869	20.7	0.0	\$11,802	3.0	1.8
Women	35-44	2,971	12.6	0.0	\$14,242	3.2	1.7
Women	45-54	2,886	12.3	0.0	\$15,309	3.2	1.5
Women	55-64	1,551	6.6	0.0	\$15,171	3.3	1.3
Women	65-Up	685	2.9	0.0	\$10,638	3.1	1.2
Women	N/A	7	0.0	0.0	\$4,158	1.4	1.3
Women	Total	23,517	100.0	43.4	\$9,969	3.0	1.7
Men	00-19	4,449	25.1	0.0	\$3,834	2.5	1.6
Men	20-24	3,342	18.8	0.0	\$8,740	2.8	1.9
Men	25-34	4,025	22.7	0.0	\$15,833	3.0	1.8
Men	35-44	2,318	13.1	0.0	\$20,985	3.1	1.6
Men	45-54	1,832	10.3	0.0	\$22,777	3.1	1.5
Men	55-64	1,151	6.5	0.0	\$22,317	3.1	1.3
Men	65-Up	619	3.5	0.0	\$12,943	2.9	1.1
Men	N/A	19	0.1	0.0	\$4,502	1.7	1.3
Men	Total	17,755	100.0	32.7	\$13,188	2.9	1.7
N/A	N/A	12,947	100.0	0.0	\$6,224	2.0	1.3
N/A	Total	12,947	100.0	23.9	\$6,224	2.0	1.3
Total	00-19	10,223	18.9	0.0	\$3,801	2.6	1.7
Total	20-24	8,116	15.0	0.0	\$8,260	2.8	1.9
Total	25-34	8,894	16.4	0.0	\$13,626	3.0	1.8
Total	35-44	5,289	9.8	0.0	\$17,197	3.2	1.7
Total	45-54	4,718	8.7	0.0	\$18,209	3.2	1.5
Total	55-64	2,702	5.0	0.0	\$18,215	3.2	1.3
Total	65-Up	1,304	2.4	0.0	\$11,732	3.0	1.1
Total	N/A	12,973	23.9	0.0	\$6,220	2.0	1.3
Total	Total	54,219	100.0	100.0	\$10,129	2.7	1.6

Note: Persons worked any time during the year.

Industry Determination: Based on the industry of employment in which the person made the most money in the year.

N/A: Represents persons with demographic data that are unavailable.

N/A = Nonresidents, individuals for whom demographic data are not available.

Source: Demographics of Persons Working in Wyoming by County, Industry, Age, & Gender, 2000-2017.

Research & Planning, Wyoming Department of Workforce Services.

Prepared by M. Moore, Research & Planning, WY DWS, 6/12/18.

Average Earnings by Age and Gender in the 71 & 72 - Leisure & Hospitality Industry in 2009

Gender	Age Group	Number	Age Percent	Gender Percent	Average Annual Wage	Average Quarters Worked	Average Annual Employers
Women	00-19	4,579	20.4	0.0	\$3,852	2.7	1.5
Women	20-24	4,785	21.4	0.0	\$7,581	2.9	1.7
Women	25-34	5,050	22.5	0.0	\$11,492	3.0	1.6
Women	35-44	2,910	13.0	0.0	\$13,828	3.2	1.5
Women	45-54	2,827	12.6	0.0	\$15,233	3.3	1.4
Women	55-64	1,552	6.9	0.0	\$15,082	3.3	1.2
Women	65-Up	692	3.1	0.0	\$10,415	3.1	1.1
Women	N/A	5	0.0	0.0	\$3,085	1.8	1.0
Women	Total	22,400	100.0	44.1	\$10,084	3.0	1.5
Men	00-19	3,620	20.3	0.0	\$4,022	2.6	1.4
Men	20-24	3,697	20.7	0.0	\$7,844	2.7	1.6
Men	25-34	4,381	24.5	0.0	\$14,244	3.0	1.6
Men	35-44	2,437	13.7	0.0	\$19,215	3.1	1.5
Men	45-54	1,911	10.7	0.0	\$21,195	3.1	1.3
Men	55-64	1,205	6.8	0.0	\$21,793	3.1	1.2
Men	65-Up	590	3.3	0.0	\$13,878	3.0	1.1
Men	N/A	6	0.0	0.0	\$13,814	3.0	1.3
Men	Total	17,847	100.0	35.2	\$12,765	2.9	1.5
N/A	N/A	10,507	100.0	0.0	\$6,460	2.1	1.2
N/A	Total	10,507	100.0	20.7	\$6,460	2.1	1.2
Total	00-19	8,199	16.2	0.0	\$3,927	2.6	1.5
Total	20-24	8,482	16.7	0.0	\$7,696	2.8	1.6
Total	25-34	9,431	18.6	0.0	\$12,770	3.0	1.6
Total	35-44	5,347	10.5	0.0	\$16,283	3.1	1.5
Total	45-54	4,738	9.3	0.0	\$17,638	3.2	1.3
Total	55-64	2,757	5.4	0.0	\$18,015	3.2	1.2
Total	65-Up	1,282	2.5	0.0	\$12,008	3.0	1.1
Total	N/A	10,518	20.7	0.0	\$6,462	2.1	1.2
Total	Total	50,754	100.0	100.0	\$10,277	2.8	1.4

Note: Persons worked any time during the year.

Industry Determination: Based on the industry of employment in which the person made the most money in the year.

N/A: Represents persons with demographic data that are unavailable.

N/A = Nonresidents, individuals for whom demographic data are not available.

Source: Demographics of Persons Working in Wyoming by County, Industry, Age, & Gender, 2000-2017.
Research & Planning, Wyoming Department of Workforce Services.

Prepared by M. Moore, Research & Planning, WY DWS, 6/12/18.

Average Earnings by Age and Gender in the 71 & 72 - Leisure & Hospitality Industry in 2010

Gender	Age Group	Number	Age Percent	Gender Percent	Average Annual Wage	Average Quarters Worked	Average Annual Employers
Women	00-19	4,355	19.4	0.0	\$3,860	2.6	1.5
Women	20-24	4,904	21.9	0.0	\$7,852	2.9	1.7
Women	25-34	5,200	23.2	0.0	\$11,573	3.0	1.6
Women	35-44	2,840	12.7	0.0	\$14,009	3.2	1.5
Women	45-54	2,845	12.7	0.0	\$15,181	3.2	1.4
Women	55-64	1,616	7.2	0.0	\$15,115	3.3	1.3
Women	65-Up	659	2.9	0.0	\$10,694	3.1	1.1
Women	N/A	5	0.0	0.0	\$2,938	1.8	1.0
Women	Total	22,424	100.0	45.3	\$10,255	3.0	1.5
Men	00-19	3,267	18.4	0.0	\$3,858	2.5	1.4
Men	20-24	3,763	21.2	0.0	\$8,131	2.8	1.6
Men	25-34	4,481	25.3	0.0	\$14,280	3.0	1.6
Men	35-44	2,456	13.9	0.0	\$19,116	3.1	1.5
Men	45-54	1,908	10.8	0.0	\$22,129	3.1	1.4
Men	55-64	1,254	7.1	0.0	\$23,504	3.2	1.2
Men	65-Up	586	3.3	0.0	\$12,903	3.0	1.1
Men	N/A	7	0.0	0.0	\$11,148	2.4	1.6
Men	Total	17,722	100.0	35.8	\$13,174	2.9	1.5
N/A	N/A	9,343	100.0	0.0	\$6,894	2.2	1.2
N/A	Total	9,343	100.0	18.9	\$6,894	2.2	1.2
Total	00-19	7,622	15.4	0.0	\$3,859	2.5	1.4
Total	20-24	8,667	17.5	0.0	\$7,973	2.8	1.7
Total	25-34	9,681	19.6	0.0	\$12,826	3.0	1.6
Total	35-44	5,296	10.7	0.0	\$16,378	3.1	1.5
Total	45-54	4,753	9.6	0.0	\$17,970	3.2	1.4
Total	55-64	2,870	5.8	0.0	\$18,780	3.2	1.2
Total	65-Up	1,245	2.5	0.0	\$11,734	3.0	1.1
Total	N/A	9,355	18.9	0.0	\$6,895	2.2	1.2
Total	Total	49,489	100.0	100.0	\$10,666	2.8	1.4

Note: Persons worked any time during the year.

Industry Determination: Based on the industry of employment in which the person made the most money in the year.

N/A: Represents persons with demographic data that are unavailable.

N/A = Nonresidents, individuals for whom demographic data are not available.

Source: Demographics of Persons Working in Wyoming by County, Industry, Age, & Gender, 2000-2017.
Research & Planning, Wyoming Department of Workforce Services.

Prepared by M. Moore, Research & Planning, WY DWS, 6/12/18.

Average Earnings by Age and Gender in the 71 & 72 - Leisure & Hospitality Industry in 2011

Gender	Age Group	Number	Age Percent	Gender Percent	Average Annual Wage	Average Quarters Worked	Average Annual Employers
Women	00-19	4,537	19.8	0.0	\$3,855	2.6	1.5
Women	20-24	5,028	22.0	0.0	\$7,916	2.9	1.7
Women	25-34	5,401	23.6	0.0	\$11,564	3.0	1.6
Women	35-44	2,842	12.4	0.0	\$14,328	3.2	1.6
Women	45-54	2,756	12.0	0.0	\$15,284	3.2	1.4
Women	55-64	1,655	7.2	0.0	\$15,736	3.3	1.3
Women	65-Up	681	3.0	0.0	\$11,251	3.1	1.1
Women	N/A	3	0.0	0.0	\$3,448	1.7	1.0
Women	Total	22,903	100.0	45.6	\$10,318	3.0	1.6
Men	00-19	3,499	19.6	0.0	\$3,789	2.5	1.4
Men	20-24	3,685	20.6	0.0	\$8,246	2.8	1.7
Men	25-34	4,485	25.1	0.0	\$14,602	3.1	1.6
Men	35-44	2,431	13.6	0.0	\$20,178	3.2	1.5
Men	45-54	1,836	10.3	0.0	\$22,548	3.2	1.4
Men	55-64	1,313	7.3	0.0	\$23,306	3.2	1.3
Men	65-Up	620	3.5	0.0	\$14,068	2.9	1.1
Men	N/A	3	0.0	0.0	\$13,758	2.3	1.0
Men	Total	17,872	100.0	35.5	\$13,370	2.9	1.5
N/A	N/A	9,502	100.0	0.0	\$6,989	2.2	1.2
N/A	Total	9,502	100.0	18.9	\$6,989	2.2	1.2
Total	00-19	8,036	16.0	0.0	\$3,826	2.5	1.5
Total	20-24	8,713	17.3	0.0	\$8,055	2.9	1.7
Total	25-34	9,886	19.7	0.0	\$12,942	3.0	1.6
Total	35-44	5,273	10.5	0.0	\$17,025	3.2	1.5
Total	45-54	4,592	9.1	0.0	\$18,188	3.2	1.4
Total	55-64	2,968	5.9	0.0	\$19,085	3.3	1.3
Total	65-Up	1,301	2.6	0.0	\$12,593	3.0	1.1
Total	N/A	9,508	18.9	0.0	\$6,990	2.2	1.2
Total	Total	50,277	100.0	100.0	\$10,774	2.8	1.5

Note: Persons worked any time during the year.

Industry Determination: Based on the industry of employment in which the person made the most money in the year.

N/A: Represents persons with demographic data that are unavailable.

N/A = Nonresidents, individuals for whom demographic data are not available.

Source: Demographics of Persons Working in Wyoming by County, Industry, Age, & Gender, 2000-2017.

Research & Planning, Wyoming Department of Workforce Services.

Prepared by M. Moore, Research & Planning, WY DWS, 6/12/18.

Average Earnings by Age and Gender in the 71 & 72 - Leisure & Hospitality Industry in 2012

Gender	Age Group	Number	Age Percent	Gender Percent	Average Annual Wage	Average Quarters Worked	Average Annual Employers
Women	00-19	4,766	20.4	0.0	\$3,995	2.6	1.6
Women	20-24	5,061	21.7	0.0	\$8,197	2.9	1.8
Women	25-34	5,481	23.5	0.0	\$12,227	3.1	1.6
Women	35-44	2,927	12.6	0.0	\$14,599	3.2	1.6
Women	45-54	2,657	11.4	0.0	\$15,853	3.2	1.5
Women	55-64	1,690	7.2	0.0	\$15,818	3.3	1.3
Women	65-Up	725	3.1	0.0	\$12,117	3.1	1.1
Women	N/A	5	0.0	0.0	\$3,744	2.0	1.2
Women	Total	23,312	100.0	44.9	\$10,635	3.0	1.6
Men	00-19	3,606	19.6	0.0	\$3,824	2.5	1.5
Men	20-24	3,730	20.3	0.0	\$8,732	2.8	1.7
Men	25-34	4,670	25.4	0.0	\$14,641	3.0	1.7
Men	35-44	2,479	13.5	0.0	\$20,674	3.1	1.6
Men	45-54	1,825	9.9	0.0	\$22,343	3.2	1.4
Men	55-64	1,401	7.6	0.0	\$24,690	3.2	1.3
Men	65-Up	662	3.6	0.0	\$14,244	2.9	1.1
Men	N/A	1	0.0	0.0	\$18,561	3.0	2.0
Men	Total	18,374	100.0	35.4	\$13,650	2.9	1.6
N/A	N/A	10,185	100.0	0.0	\$6,784	2.1	1.2
N/A	Total	10,185	100.0	19.6	\$6,784	2.1	1.2
Total	00-19	8,372	16.1	0.0	\$3,921	2.5	1.5
Total	20-24	8,791	16.9	0.0	\$8,424	2.9	1.8
Total	25-34	10,151	19.6	0.0	\$13,338	3.1	1.6
Total	35-44	5,406	10.4	0.0	\$17,385	3.2	1.6
Total	45-54	4,482	8.6	0.0	\$18,496	3.2	1.5
Total	55-64	3,091	6.0	0.0	\$19,839	3.2	1.3
Total	65-Up	1,387	2.7	0.0	\$13,132	3.0	1.1
Total	N/A	10,191	19.6	0.0	\$6,784	2.1	1.2
Total	Total	51,871	100.0	100.0	\$10,947	2.8	1.5

Note: Persons worked any time during the year.

Industry Determination: Based on the industry of employment in which the person made the most money in the year.

N/A: Represents persons with demographic data that are unavailable.

N/A = Nonresidents, individuals for whom demographic data are not available.

Source: Demographics of Persons Working in Wyoming by County, Industry, Age, & Gender, 2000-2017.

Research & Planning, Wyoming Department of Workforce Services.

Prepared by M. Moore, Research & Planning, WY DWS, 6/12/18.

Average Earnings by Age and Gender in the 71 & 72 - Leisure & Hospitality Industry in 2013

Gender	Age Group	Number	Age Percent	Gender Percent	Average Annual Wage	Average Quarters Worked	Average Annual Employers
Women	00-19	4,901	20.8	0.0	\$4,061	2.6	1.6
Women	20-24	5,063	21.5	0.0	\$8,448	2.9	1.8
Women	25-34	5,522	23.5	0.0	\$12,468	3.0	1.7
Women	35-44	2,950	12.5	0.0	\$15,263	3.2	1.6
Women	45-54	2,597	11.0	0.0	\$16,374	3.2	1.5
Women	55-64	1,748	7.4	0.0	\$15,728	3.2	1.3
Women	65-Up	753	3.2	0.0	\$11,508	3.0	1.1
Women	N/A	9	0.0	0.0	\$3,258	1.8	1.2
Women	Total	23,543	100.0	44.7	\$10,842	3.0	1.6
Men	00-19	3,650	19.6	0.0	\$3,966	2.5	1.5
Men	20-24	3,804	20.5	0.0	\$8,904	2.8	1.7
Men	25-34	4,769	25.6	0.0	\$15,194	3.1	1.7
Men	35-44	2,451	13.2	0.0	\$22,067	3.2	1.5
Men	45-54	1,848	9.9	0.0	\$22,994	3.2	1.5
Men	55-64	1,388	7.5	0.0	\$24,097	3.2	1.3
Men	65-Up	686	3.7	0.0	\$15,819	3.0	1.1
Men	N/A	2	0.0	0.0	\$18,285	2.5	1.5
Men	Total	18,598	100.0	35.3	\$14,073	2.9	1.6
N/A	N/A	10,546	100.0	0.0	\$6,986	2.1	1.2
N/A	Total	10,546	100.0	20.0	\$6,986	2.1	1.2
Total	00-19	8,551	16.2	0.0	\$4,021	2.6	1.6
Total	20-24	8,867	16.8	0.0	\$8,644	2.9	1.8
Total	25-34	10,291	19.5	0.0	\$13,731	3.1	1.7
Total	35-44	5,401	10.3	0.0	\$18,351	3.2	1.6
Total	45-54	4,445	8.4	0.0	\$19,127	3.2	1.5
Total	55-64	3,136	6.0	0.0	\$19,432	3.2	1.3
Total	65-Up	1,439	2.7	0.0	\$13,563	3.0	1.1
Total	N/A	10,557	20.0	0.0	\$6,985	2.1	1.2
Total	Total	52,687	100.0	100.0	\$11,211	2.8	1.5

Note: Persons worked any time during the year.

Industry Determination: Based on the industry of employment in which the person made the most money in the year.

N/A: Represents persons with demographic data that are unavailable.

N/A = Nonresidents, individuals for whom demographic data are not available.

Source: Demographics of Persons Working in Wyoming by County, Industry, Age, & Gender, 2000-2017.

Research & Planning, Wyoming Department of Workforce Services.

Prepared by M. Moore, Research & Planning, WY DWS, 6/12/18.

Average Earnings by Age and Gender in the 71 & 72 - Leisure & Hospitality Industry in 2014

Gender	Age Group	Number	Age Percent	Gender Percent	Average Annual Wage	Average Quarters Worked	Average Annual Employers
Women	00-19	5,043	21.2	0.0	\$4,363	2.6	1.6
Women	20-24	4,833	20.3	0.0	\$9,065	2.9	1.8
Women	25-34	5,582	23.5	0.0	\$13,090	3.0	1.7
Women	35-44	3,148	13.2	0.0	\$15,682	3.2	1.6
Women	45-54	2,612	11.0	0.0	\$17,258	3.2	1.5
Women	55-64	1,765	7.4	0.0	\$16,595	3.3	1.3
Women	65-Up	768	3.2	0.0	\$12,066	3.0	1.2
Women	N/A	8	0.0	0.0	\$3,829	2.0	1.0
Women	Total	23,759	100.0	44.2	\$11,445	3.0	1.6
Men	00-19	3,672	20.0	0.0	\$4,151	2.5	1.5
Men	20-24	3,498	19.1	0.0	\$9,747	2.9	1.8
Men	25-34	4,684	25.6	0.0	\$16,143	3.1	1.7
Men	35-44	2,516	13.7	0.0	\$22,840	3.2	1.6
Men	45-54	1,859	10.1	0.0	\$24,515	3.2	1.5
Men	55-64	1,401	7.6	0.0	\$25,603	3.2	1.3
Men	65-Up	690	3.8	0.0	\$17,268	3.0	1.1
Men	N/A	4	0.0	0.0	\$11,238	2.0	1.3
Men	Total	18,324	100.0	34.1	\$15,052	3.0	1.6
N/A	N/A	11,727	100.0	0.0	\$7,243	2.1	1.2
N/A	Total	11,727	100.0	21.8	\$7,243	2.1	1.2
Total	00-19	8,715	16.2	0.0	\$4,274	2.6	1.6
Total	20-24	8,331	15.5	0.0	\$9,352	2.9	1.8
Total	25-34	10,266	19.1	0.0	\$14,483	3.1	1.7
Total	35-44	5,664	10.5	0.0	\$18,861	3.2	1.6
Total	45-54	4,471	8.3	0.0	\$20,275	3.2	1.5
Total	55-64	3,166	5.9	0.0	\$20,581	3.2	1.3
Total	65-Up	1,458	2.7	0.0	\$14,528	3.0	1.2
Total	N/A	11,739	21.8	0.0	\$7,242	2.1	1.2
Total	Total	53,810	100.0	100.0	\$11,758	2.8	1.5

Note: Persons worked any time during the year.

Industry Determination: Based on the industry of employment in which the person made the most money in the year.

N/A: Represents persons with demographic data that are unavailable.

N/A = Nonresidents, individuals for whom demographic data are not available.

Source: Demographics of Persons Working in Wyoming by County, Industry, Age, & Gender, 2000-2017.

Research & Planning, Wyoming Department of Workforce Services.

Prepared by M. Moore, Research & Planning, WY DWS, 6/12/18.

Average Earnings by Age and Gender in the 71 & 72 - Leisure & Hospitality Industry in 2015

Gender	Age Group	Number	Age Percent	Gender Percent	Average Annual Wage	Average Quarters Worked	Average Annual Employers
Women	00-19	4,855	20.8	0.0	\$4,651	2.7	1.6
Women	20-24	4,598	19.7	0.0	\$9,477	2.9	1.8
Women	25-34	5,604	24.0	0.0	\$13,802	3.1	1.7
Women	35-44	3,129	13.4	0.0	\$16,291	3.2	1.6
Women	45-54	2,512	10.8	0.0	\$18,167	3.3	1.5
Women	55-64	1,821	7.8	0.0	\$17,923	3.3	1.4
Women	65-Up	801	3.4	0.0	\$12,048	3.1	1.2
Women	N/A	8	0.0	0.0	\$2,543	1.6	1.1
Women	Total	23,328	100.0	42.7	\$12,107	3.0	1.6
Men	00-19	3,824	20.4	0.0	\$4,303	2.5	1.5
Men	20-24	3,505	18.7	0.0	\$10,385	2.9	1.8
Men	25-34	4,770	25.4	0.0	\$16,272	3.1	1.7
Men	35-44	2,584	13.8	0.0	\$23,418	3.2	1.6
Men	45-54	1,915	10.2	0.0	\$24,442	3.2	1.5
Men	55-64	1,402	7.5	0.0	\$25,619	3.2	1.3
Men	65-Up	755	4.0	0.0	\$18,757	3.1	1.2
Men	N/A	4	0.0	0.0	\$13,043	2.3	1.3
Men	Total	18,759	100.0	34.4	\$15,349	3.0	1.6
N/A	N/A	12,517	100.0	0.0	\$7,555	2.1	1.2
N/A	Total	12,517	100.0	22.9	\$7,555	2.1	1.2
Total	00-19	8,679	15.9	0.0	\$4,498	2.6	1.6
Total	20-24	8,103	14.8	0.0	\$9,870	2.9	1.8
Total	25-34	10,374	19.0	0.0	\$14,938	3.1	1.7
Total	35-44	5,713	10.5	0.0	\$19,515	3.2	1.6
Total	45-54	4,427	8.1	0.0	\$20,881	3.2	1.5
Total	55-64	3,223	5.9	0.0	\$21,271	3.3	1.3
Total	65-Up	1,556	2.8	0.0	\$15,303	3.1	1.2
Total	N/A	12,529	22.9	0.0	\$7,553	2.1	1.2
Total	Total	54,604	100.0	100.0	\$12,177	2.8	1.5

Note: Persons worked any time during the year.

Industry Determination: Based on the industry of employment in which the person made the most money in the year.

N/A: Represents persons with demographic data that are unavailable.

N/A = Nonresidents, individuals for whom demographic data are not available.

Source: Demographics of Persons Working in Wyoming by County, Industry, Age, & Gender, 2000-2017.
Research & Planning, Wyoming Department of Workforce Services.

Prepared by M. Moore, Research & Planning, WY DWS, 6/12/18.

Average Earnings by Age and Gender in the 71 & 72 - Leisure & Hospitality Industry in 2016

Gender	Age Group	Number	Age Percent	Gender Percent	Average Annual Wage	Average Quarters Worked	Average Annual Employers
Women	00-19	4,472	19.9	0.0	\$4,548	2.7	1.5
Women	20-24	4,329	19.3	0.0	\$9,979	3.0	1.7
Women	25-34	5,359	23.8	0.0	\$14,281	3.1	1.7
Women	35-44	3,191	14.2	0.0	\$16,561	3.2	1.5
Women	45-54	2,453	10.9	0.0	\$17,830	3.3	1.5
Women	55-64	1,858	8.3	0.0	\$17,959	3.3	1.3
Women	65-Up	812	3.6	0.0	\$12,334	3.1	1.2
Women	N/A	9	0.0	0.0	\$1,691	1.4	1.0
Women	Total	22,483	100.0	41.2	\$12,456	3.0	1.6
Men	00-19	3,532	18.9	0.0	\$4,425	2.6	1.4
Men	20-24	3,485	18.7	0.0	\$10,222	2.9	1.7
Men	25-34	4,903	26.3	0.0	\$16,748	3.1	1.7
Men	35-44	2,650	14.2	0.0	\$23,104	3.2	1.6
Men	45-54	1,889	10.1	0.0	\$24,746	3.2	1.5
Men	55-64	1,454	7.8	0.0	\$25,251	3.2	1.3
Men	65-Up	758	4.1	0.0	\$20,116	3.1	1.1
Men	N/A	7	0.0	0.0	\$11,524	3.0	2.3
Men	Total	18,678	100.0	34.3	\$15,707	3.0	1.6
N/A	N/A	13,360	100.0	0.0	\$7,932	2.1	1.2
N/A	Total	13,360	100.0	24.5	\$7,932	2.1	1.2
Total	00-19	8,004	14.7	0.0	\$4,494	2.6	1.5
Total	20-24	7,814	14.3	0.0	\$10,087	3.0	1.7
Total	25-34	10,262	18.8	0.0	\$15,460	3.1	1.7
Total	35-44	5,841	10.7	0.0	\$19,529	3.2	1.6
Total	45-54	4,342	8.0	0.0	\$20,838	3.3	1.5
Total	55-64	3,312	6.1	0.0	\$21,160	3.3	1.3
Total	65-Up	1,570	2.9	0.0	\$16,091	3.1	1.1
Total	N/A	13,376	24.5	0.0	\$7,930	2.1	1.2
Total	Total	54,521	100.0	100.0	\$12,461	2.8	1.5

Note: Persons worked any time during the year.

Industry Determination: Based on the industry of employment in which the person made the most money in the year.

N/A: Represents persons with demographic data that are unavailable.

N/A = Nonresidents, individuals for whom demographic data are not available.

Source: Demographics of Persons Working in Wyoming by County, Industry, Age, & Gender, 2000-2017.

Research & Planning, Wyoming Department of Workforce Services.

Prepared by M. Moore, Research & Planning, WY DWS, 6/12/18.

Average Earnings by Age and Gender in the 71 & 72 - Leisure & Hospitality Industry in 2017

Gender	Age Group	Number	Age Percent	Gender Percent	Average Annual Wage	Average Quarters Worked	Average Annual Employers
Women	00-19	4,350	19.8	0.0	\$4,681	2.7	1.6
Women	20-24	4,212	19.2	0.0	\$10,119	3.0	1.8
Women	25-34	5,166	23.6	0.0	\$14,805	3.1	1.7
Women	35-44	3,234	14.7	0.0	\$17,891	3.2	1.6
Women	45-54	2,279	10.4	0.0	\$18,522	3.3	1.5
Women	55-64	1,863	8.5	0.0	\$18,356	3.3	1.3
Women	65-Up	821	3.7	0.0	\$13,258	3.2	1.1
Women	N/A	6	0.0	0.0	\$2,757	1.5	1.3
Women	Total	21,931	100.0	40.2	\$12,979	3.1	1.6
Men	00-19	3,470	19.4	0.0	\$4,518	2.6	1.5
Men	20-24	3,153	17.6	0.0	\$10,770	3.0	1.7
Men	25-34	4,537	25.4	0.0	\$18,062	3.2	1.7
Men	35-44	2,535	14.2	0.0	\$24,300	3.2	1.5
Men	45-54	1,839	10.3	0.0	\$25,984	3.2	1.5
Men	55-64	1,486	8.3	0.0	\$24,633	3.2	1.3
Men	65-Up	841	4.7	0.0	\$20,594	3.1	1.2
Men	N/A	9	0.1	0.0	\$8,835	2.4	1.1
Men	Total	17,870	100.0	32.8	\$16,507	3.0	1.5
N/A	N/A	14,708	100.0	0.0	\$8,504	2.2	1.3
N/A	Total	14,708	100.0	27.0	\$8,504	2.2	1.3
Total	00-19	7,820	14.3	0.0	\$4,609	2.6	1.5
Total	20-24	7,365	13.5	0.0	\$10,398	3.0	1.8
Total	25-34	9,703	17.8	0.0	\$16,328	3.1	1.7
Total	35-44	5,769	10.6	0.0	\$20,707	3.2	1.6
Total	45-54	4,118	7.6	0.0	\$21,854	3.2	1.5
Total	55-64	3,349	6.1	0.0	\$21,141	3.3	1.3
Total	65-Up	1,662	3.0	0.0	\$16,970	3.1	1.2
Total	N/A	14,723	27.0	0.0	\$8,502	2.2	1.3
Total	Total	54,509	100.0	100.0	\$12,928	2.8	1.5

Note: Persons worked any time during the year.

Industry Determination: Based on the industry of employment in which the person made the most money in the year.

N/A: Represents persons with demographic data that are unavailable.

N/A = Nonresidents, individuals for whom demographic data are not available.

Source: Demographics of Persons Working in Wyoming by County, Industry, Age, & Gender, 2000-2017.

Research & Planning, Wyoming Department of Workforce Services.

Prepared by M. Moore, Research & Planning, WY DWS, 6/12/18.