

# Wyoming Professional & Business Services (NAICS 54-55) at a Glance, 2017

Demographics of Persons Working in Wyoming by County, Industry, Age, & Gender, 2000-2017

**Table: Total Number of Persons Working in Professional & Business Services (NAICS 54-55) at Any Time by Gender and Age, 2016-2017**

Gender	2016	2017	Change	
			N	%
Women	9,285	8,999	-286	-3.1
Men	12,235	12,181	-54	-0.4
Nonresidents	3,372	3,941	569	16.9
<b>Total</b>	<b>24,892</b>	<b>25,121</b>	<b>229</b>	<b>0.9</b>

Age	2016	2017	Change	
			N	%
00-19	877	908	31	3.5
20-24	2,163	2,049	-114	-5.3
25-34	5,218	4,932	-286	-5.5
35-44	4,327	4,283	-44	-1.0
45-54	3,834	3,730	-104	-2.7
55-64	3,615	3,675	60	1.7
65-Up	1,482	1,600	118	8.0
Nonresidents	3,376	3,944	568	16.8
<b>Total</b>	<b>24,892</b>	<b>25,121</b>	<b>229</b>	<b>0.9</b>

**Women's Wages as % of Men's Wages**  
 Pro. & Business Services (NAICS 54-55): 70.2%  
 Total, All Industries: 62.7%

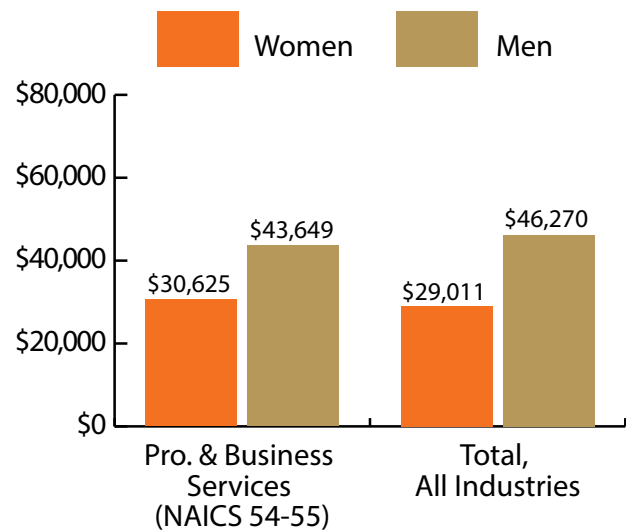


Figure: Average Annual Wages by Gender, 2017

Total = 25,121

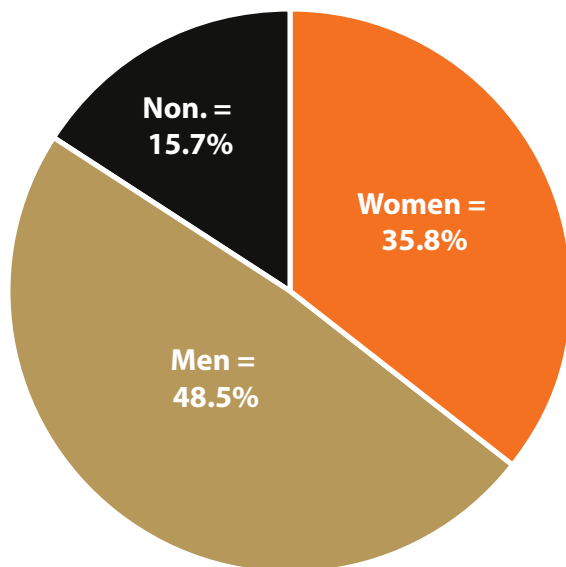


Figure: Persons Working by Gender, 2017

Total = 25,121

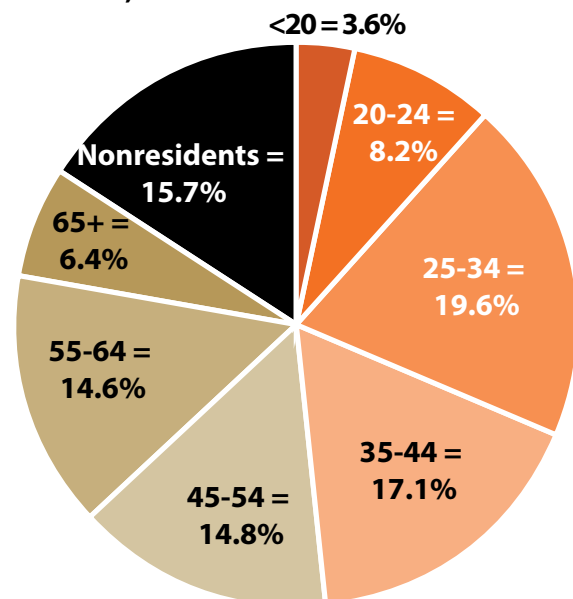


Figure: Persons Working by Age, 2017

Note: Nonresidents are individuals for whom demographic data are not available.  
 Source: Demographics of Persons Working in Wyoming by County, Industry, Age, & Gender, 2000-2017. Research & Planning, Wyoming Department of Workforce Services. Prepared by M. Moore, Research & Planning, WY DWS, 6/12/18.

# Persons Working in Professional & Business Services (NAICS 54-55) in Wyoming by Gender and Age, 2000-2017

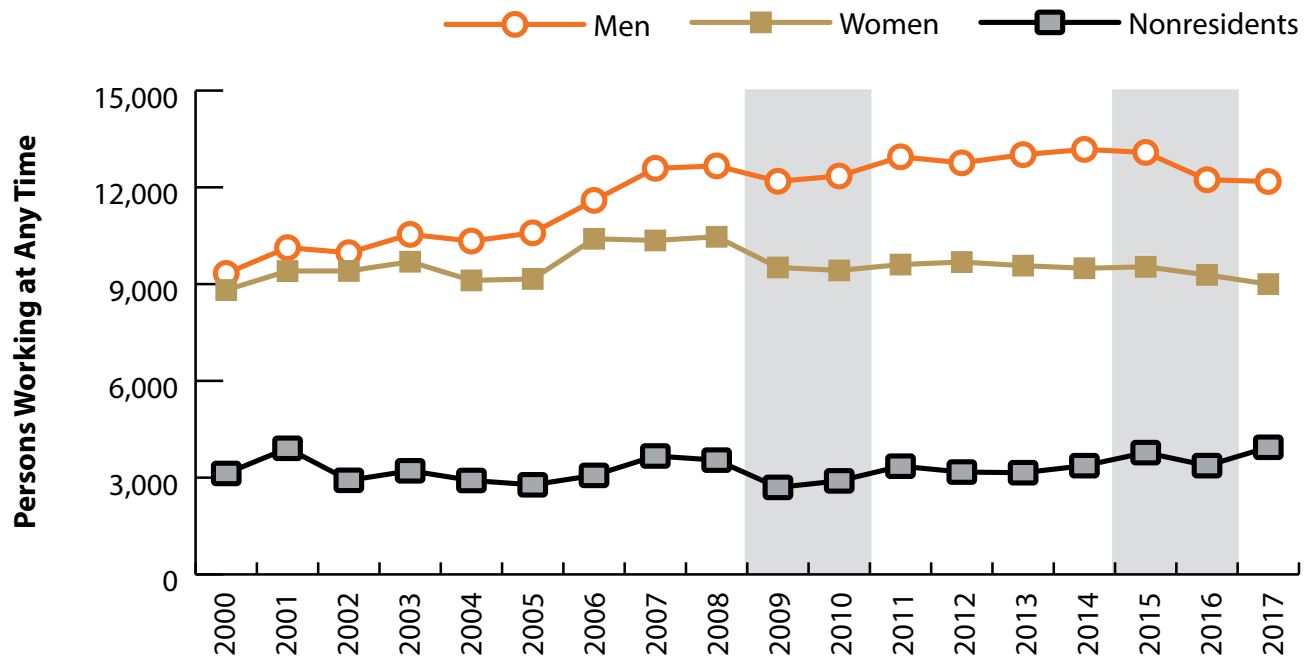


Figure: Persons Working in Professional & Business Services (NAICS 54-55) in Wyoming at Any Time by Gender, 2000-2017

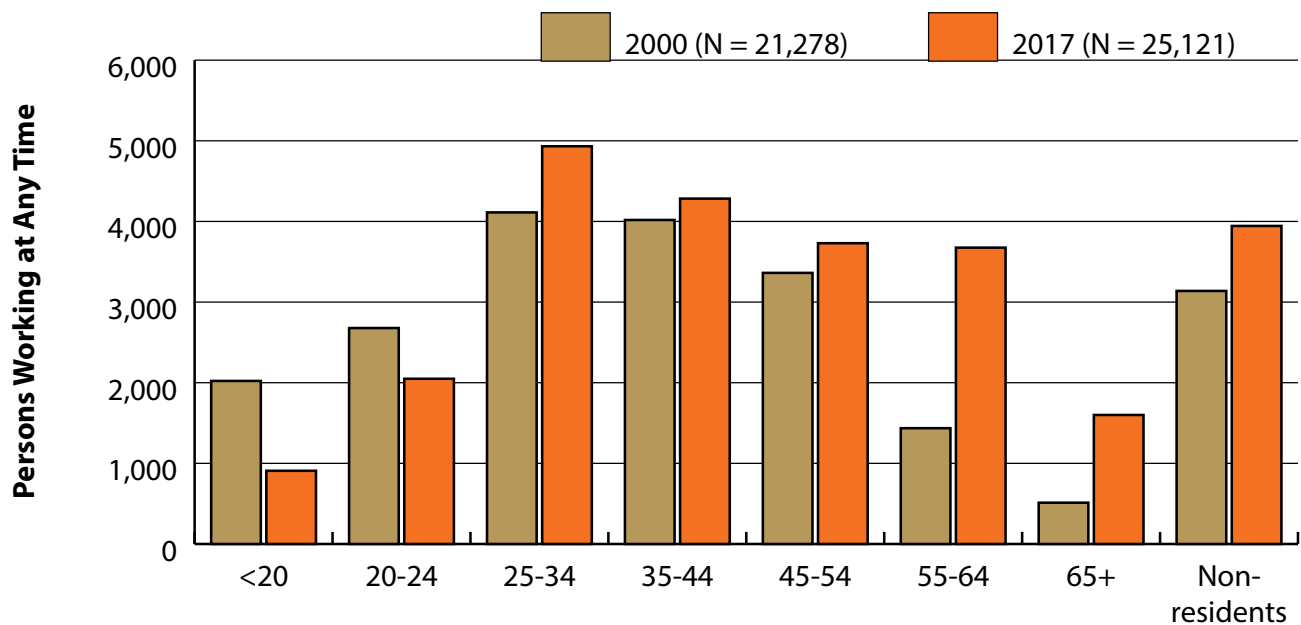


Figure: Persons Working in Professional & Business Services (NAICS 54-55) in Wyoming at Any Time by Age, 2000-2017

Note: Nonresidents are individuals for whom demographic data are not available. Shaded areas indicate periods of economic downturn: 2009Q1-2010Q1 and 2015Q2-2016Q4. Source: Demographics of Persons Working in Wyoming by County, Industry, Age, & Gender, 2000-2017. Research & Planning, Wyoming Department of Workforce Services. Prepared by M. Moore, Research & Planning, WY DWS, 6/12/18.

# Wages for Persons Working in Professional & Business Services (NAICS 54-55) in Wyoming by Gender, 2000-2017

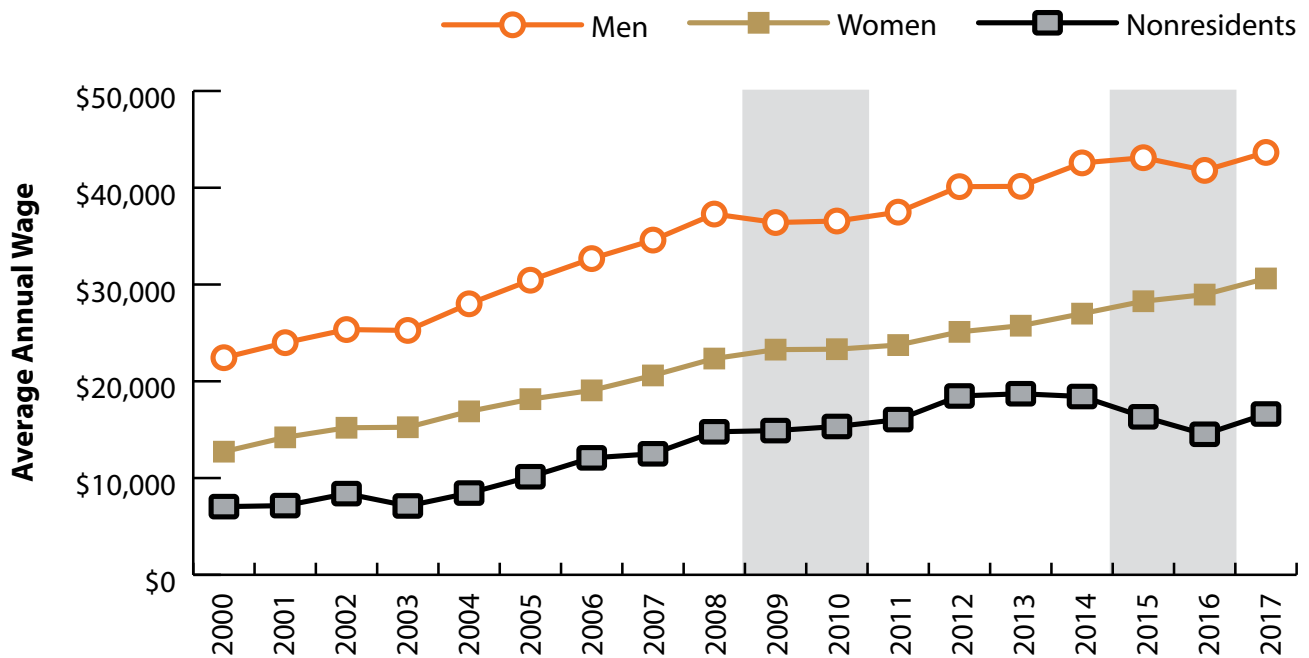


Figure: Average Annual Wage for Persons Working in Professional & Business Services (NAICS 54-55) in Wyoming at Any Time by Age, 2000-2017

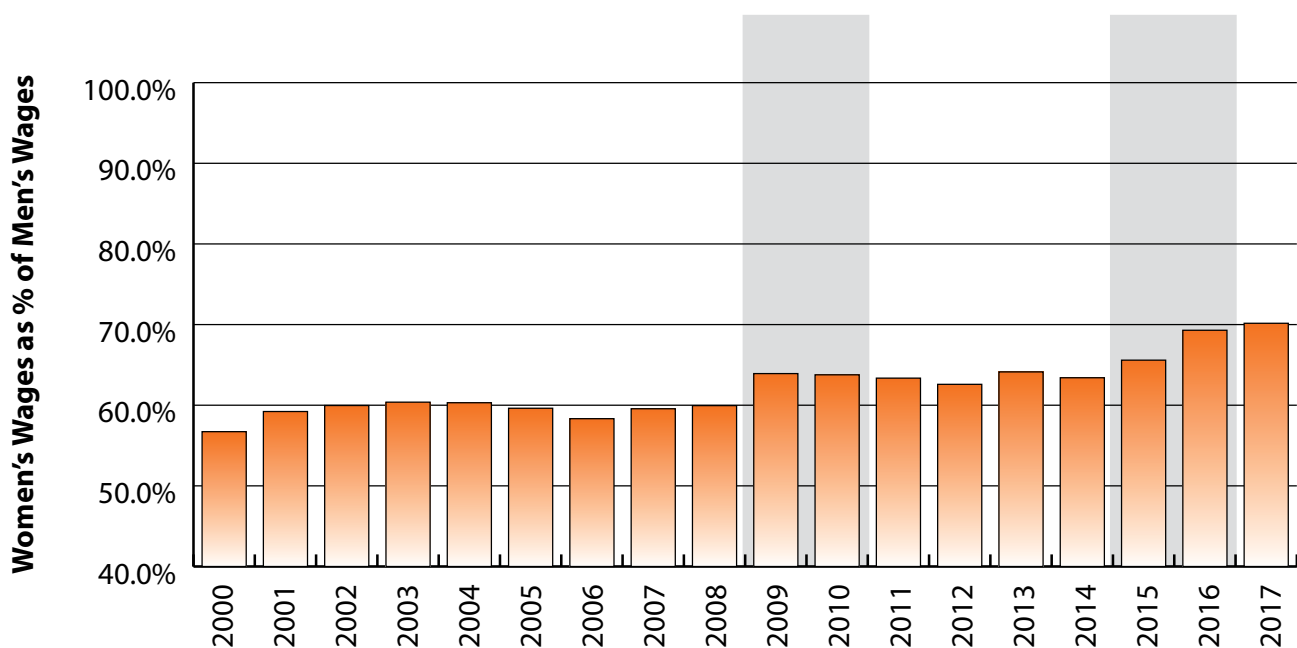


Figure: Women's Average Annual Wages as a Percent of Men's Wages for Persons Working in Professional & Business Services (NAICS 54-55) in Wyoming at Any Time by Age, 2000-2017

Note: Nonresidents are individuals for whom demographic data are not available.  
 Shaded areas indicate periods of economic downturn: 2009Q1-2010Q1 and 2015Q2-2016Q4.  
 Source: Demographics of Persons Working in Wyoming by County, Industry, Age, & Gender, 2000-2017. Research & Planning, Wyoming Department of Workforce Services. Prepared by M. Moore, Research & Planning, WY DWS, 6/12/18.

### Average Earnings by Age and Gender in the 54 & 55 - Professional & Business Services Industry in 2000

Gender	Age Group	Number	Age Percent	Gender Percent	Average Annual Wage	Average Quarters Worked	Average Annual Employers
Women	00-19	955	10.8	0.0	\$2,773	2.5	1.8
Women	20-24	1,236	14.0	0.0	\$6,925	2.8	1.9
Women	25-34	2,009	22.8	0.0	\$13,162	3.0	1.6
Women	35-44	2,058	23.3	0.0	\$16,904	3.2	1.6
Women	45-54	1,687	19.1	0.0	\$17,587	3.3	1.5
Women	55-64	658	7.5	0.0	\$13,290	3.1	1.3
Women	65-Up	209	2.4	0.0	\$6,382	2.6	1.2
Women	N/A	5	0.1	0.0	\$3,851	1.6	1.0
Women	Total	8,817	100.0	41.4	\$12,726	3.0	1.6
Men	00-19	1,067	11.4	0.0	\$3,250	2.3	1.7
Men	20-24	1,442	15.5	0.0	\$8,394	2.7	2.0
Men	25-34	2,103	22.5	0.0	\$19,816	3.0	1.6
Men	35-44	1,960	21.0	0.0	\$29,526	3.1	1.5
Men	45-54	1,675	18.0	0.0	\$37,797	3.2	1.4
Men	55-64	778	8.3	0.0	\$33,060	3.0	1.3
Men	65-Up	303	3.2	0.0	\$17,161	2.9	1.2
Men	N/A	3	0.0	0.0	\$1,071	1.0	1.0
Men	Total	9,331	100.0	43.9	\$22,436	3.0	1.6
N/A	N/A	3,130	100.0	0.0	\$7,046	1.6	1.1
N/A	Total	3,130	100.0	14.7	\$7,046	1.6	1.1
Total	00-19	2,022	9.5	0.0	\$3,024	2.4	1.7
Total	20-24	2,678	12.6	0.0	\$7,716	2.8	2.0
Total	25-34	4,112	19.3	0.0	\$16,565	3.0	1.6
Total	35-44	4,018	18.9	0.0	\$23,061	3.2	1.5
Total	45-54	3,362	15.8	0.0	\$27,656	3.2	1.4
Total	55-64	1,436	6.7	0.0	\$24,001	3.1	1.3
Total	65-Up	512	2.4	0.0	\$12,761	2.8	1.2
Total	N/A	3,138	14.7	0.0	\$7,035	1.6	1.1
Total	Total	21,278	100.0	100.0	\$16,148	2.8	1.5

Note: Persons worked any time during the year.

Industry Determination: Based on the industry of employment in which the person made the most money in the year.

N/A: Represents persons with demographic data that are unavailable.

N/A = Nonresidents, individuals for whom demographic data are not available.

Source: Demographics of Persons Working in Wyoming by County, Industry, Age, & Gender, 2000-2017.  
Research & Planning, Wyoming Department of Workforce Services.

Prepared by M. Moore, Research & Planning, WY DWS, 6/12/18.

### Average Earnings by Age and Gender in the 54 & 55 - Professional & Business Services Industry in 2001

Gender	Age Group	Number	Age Percent	Gender Percent	Average Annual Wage	Average Quarters Worked	Average Annual Employers
Women	00-19	929	9.9	0.0	\$3,271	2.4	1.7
Women	20-24	1,361	14.5	0.0	\$7,659	2.8	1.9
Women	25-34	2,154	22.9	0.0	\$14,679	3.1	1.6
Women	35-44	2,131	22.7	0.0	\$18,249	3.2	1.6
Women	45-54	1,869	19.9	0.0	\$19,563	3.3	1.5
Women	55-64	723	7.7	0.0	\$15,608	3.1	1.4
Women	65-Up	233	2.5	0.0	\$7,550	2.8	1.3
Women	N/A	6	0.1	0.0	\$7,332	2.0	1.2
Women	Total	9,406	100.0	40.1	\$14,206	3.0	1.6
Men	00-19	1,072	10.6	0.0	\$3,257	2.3	1.7
Men	20-24	1,601	15.8	0.0	\$9,139	2.7	1.9
Men	25-34	2,200	21.7	0.0	\$21,164	3.0	1.6
Men	35-44	2,084	20.6	0.0	\$30,490	3.0	1.4
Men	45-54	1,923	19.0	0.0	\$39,591	3.1	1.3
Men	55-64	875	8.6	0.0	\$34,349	3.1	1.3
Men	65-Up	369	3.6	0.0	\$23,222	2.9	1.2
Men	N/A	6	0.1	0.0	\$3,822	1.3	1.2
Men	Total	10,130	100.0	43.2	\$23,989	2.9	1.5
N/A	N/A	3,910	100.0	0.0	\$7,150	1.5	1.1
N/A	Total	3,910	100.0	16.7	\$7,150	1.5	1.1
Total	00-19	2,001	8.5	0.0	\$3,264	2.4	1.7
Total	20-24	2,962	12.6	0.0	\$8,459	2.7	1.9
Total	25-34	4,354	18.6	0.0	\$17,956	3.0	1.6
Total	35-44	4,215	18.0	0.0	\$24,301	3.1	1.5
Total	45-54	3,792	16.2	0.0	\$29,720	3.2	1.4
Total	55-64	1,598	6.8	0.0	\$25,869	3.1	1.3
Total	65-Up	602	2.6	0.0	\$17,156	2.9	1.2
Total	N/A	3,922	16.7	0.0	\$7,145	1.5	1.1
Total	Total	23,446	100.0	100.0	\$17,256	2.7	1.5

Note: Persons worked any time during the year.

Industry Determination: Based on the industry of employment in which the person made the most money in the year.

N/A: Represents persons with demographic data that are unavailable.

N/A = Nonresidents, individuals for whom demographic data are not available.

Source: Demographics of Persons Working in Wyoming by County, Industry, Age, & Gender, 2000-2017.

Research & Planning, Wyoming Department of Workforce Services.

Prepared by M. Moore, Research & Planning, WY DWS, 6/12/18.

### Average Earnings by Age and Gender in the 54 & 55 - Professional & Business Services Industry in 2002

Gender	Age Group	Number	Age Percent	Gender Percent	Average Annual Wage	Average Quarters Worked	Average Annual Employers
Women	00-19	820	8.7	0.0	\$3,313	2.4	1.7
Women	20-24	1,325	14.1	0.0	\$8,150	2.8	1.8
Women	25-34	2,136	22.7	0.0	\$15,658	3.1	1.6
Women	35-44	2,064	21.9	0.0	\$19,665	3.3	1.5
Women	45-54	1,933	20.5	0.0	\$20,315	3.3	1.5
Women	55-64	859	9.1	0.0	\$16,378	3.2	1.3
Women	65-Up	265	2.8	0.0	\$7,752	2.8	1.3
Women	N/A	6	0.1	0.0	\$5,483	1.7	1.0
Women	Total	9,408	100.0	42.2	\$15,197	3.1	1.5
Men	00-19	976	9.8	0.0	\$3,182	2.3	1.6
Men	20-24	1,405	14.1	0.0	\$9,405	2.7	1.9
Men	25-34	2,269	22.7	0.0	\$22,645	3.1	1.6
Men	35-44	1,987	19.9	0.0	\$31,184	3.1	1.4
Men	45-54	1,920	19.3	0.0	\$39,514	3.2	1.3
Men	55-64	1,007	10.1	0.0	\$37,329	3.1	1.2
Men	65-Up	406	4.1	0.0	\$23,712	2.8	1.2
Men	N/A	4	0.0	0.0	\$9,264	2.3	1.0
Men	Total	9,974	100.0	44.7	\$25,344	3.0	1.5
N/A	N/A	2,917	100.0	0.0	\$8,390	1.6	1.1
N/A	Total	2,917	100.0	13.1	\$8,390	1.6	1.1
Total	00-19	1,796	8.1	0.0	\$3,242	2.4	1.7
Total	20-24	2,730	12.2	0.0	\$8,796	2.8	1.8
Total	25-34	4,405	19.8	0.0	\$19,257	3.1	1.6
Total	35-44	4,051	18.2	0.0	\$25,315	3.2	1.5
Total	45-54	3,853	17.3	0.0	\$29,882	3.3	1.4
Total	55-64	1,866	8.4	0.0	\$27,684	3.1	1.3
Total	65-Up	671	3.0	0.0	\$17,408	2.8	1.2
Total	N/A	2,927	13.1	0.0	\$8,385	1.6	1.1
Total	Total	22,299	100.0	100.0	\$18,845	2.8	1.5

Note: Persons worked any time during the year.

Industry Determination: Based on the industry of employment in which the person made the most money in the year.

N/A: Represents persons with demographic data that are unavailable.

N/A = Nonresidents, individuals for whom demographic data are not available.

Source: Demographics of Persons Working in Wyoming by County, Industry, Age, & Gender, 2000-2017.

Research & Planning, Wyoming Department of Workforce Services.

Prepared by M. Moore, Research & Planning, WY DWS, 6/12/18.

### Average Earnings by Age and Gender in the 54 & 55 - Professional & Business Services Industry in 2003

Gender	Age Group	Number	Age Percent	Gender Percent	Average Annual Wage	Average Quarters Worked	Average Annual Employers
Women	00-19	870	9.0	0.0	\$3,363	2.5	1.7
Women	20-24	1,374	14.2	0.0	\$8,454	2.8	1.9
Women	25-34	2,125	21.9	0.0	\$15,660	3.1	1.6
Women	35-44	2,075	21.4	0.0	\$19,327	3.2	1.5
Women	45-54	2,055	21.2	0.0	\$20,025	3.3	1.4
Women	55-64	907	9.4	0.0	\$17,720	3.2	1.3
Women	65-Up	286	3.0	0.0	\$9,334	3.0	1.4
Women	N/A	2	0.0	0.0	\$4,106	3.0	1.0
Women	Total	9,694	100.0	41.3	\$15,249	3.1	1.6
Men	00-19	996	9.4	0.0	\$3,253	2.2	1.6
Men	20-24	1,488	14.1	0.0	\$9,088	2.7	1.9
Men	25-34	2,401	22.8	0.0	\$21,973	3.0	1.6
Men	35-44	2,035	19.3	0.0	\$31,043	3.1	1.4
Men	45-54	2,060	19.5	0.0	\$38,379	3.2	1.3
Men	55-64	1,134	10.8	0.0	\$40,208	3.1	1.3
Men	65-Up	420	4.0	0.0	\$20,975	2.9	1.2
Men	N/A	7	0.1	0.0	\$7,704	1.6	1.0
Men	Total	10,541	100.0	45.0	\$25,255	2.9	1.5
N/A	N/A	3,212	100.0	0.0	\$7,115	1.5	1.1
N/A	Total	3,212	100.0	13.7	\$7,115	1.5	1.1
Total	00-19	1,866	8.0	0.0	\$3,304	2.4	1.7
Total	20-24	2,862	12.2	0.0	\$8,784	2.8	1.9
Total	25-34	4,526	19.3	0.0	\$19,009	3.0	1.6
Total	35-44	4,110	17.5	0.0	\$25,128	3.2	1.5
Total	45-54	4,115	17.6	0.0	\$29,213	3.2	1.3
Total	55-64	2,041	8.7	0.0	\$30,214	3.2	1.3
Total	65-Up	706	3.0	0.0	\$16,260	3.0	1.3
Total	N/A	3,221	13.7	0.0	\$7,114	1.5	1.1
Total	Total	23,447	100.0	100.0	\$18,633	2.8	1.5

Note: Persons worked any time during the year.

Industry Determination: Based on the industry of employment in which the person made the most money in the year.

N/A: Represents persons with demographic data that are unavailable.

N/A = Nonresidents, individuals for whom demographic data are not available.

Source: Demographics of Persons Working in Wyoming by County, Industry, Age, & Gender, 2000-2017.

Research & Planning, Wyoming Department of Workforce Services.

Prepared by M. Moore, Research & Planning, WY DWS, 6/12/18.

### Average Earnings by Age and Gender in the 54 & 55 - Professional & Business Services Industry in 2004

Gender	Age Group	Number	Age Percent	Gender Percent	Average Annual Wage	Average Quarters Worked	Average Annual Employers
Women	00-19	621	6.8	0.0	\$3,395	2.5	1.7
Women	20-24	1,192	13.1	0.0	\$9,153	2.9	1.9
Women	25-34	2,050	22.5	0.0	\$16,847	3.1	1.6
Women	35-44	1,951	21.4	0.0	\$20,820	3.2	1.5
Women	45-54	2,056	22.6	0.0	\$21,910	3.3	1.4
Women	55-64	952	10.4	0.0	\$18,910	3.3	1.4
Women	65-Up	289	3.2	0.0	\$9,331	2.9	1.3
Women	N/A	4	0.0	0.0	\$6,592	1.8	1.0
Women	Total	9,115	100.0	40.8	\$16,889	3.1	1.6
Men	00-19	837	8.1	0.0	\$4,085	2.4	1.7
Men	20-24	1,442	14.0	0.0	\$10,172	2.8	1.9
Men	25-34	2,346	22.7	0.0	\$24,077	3.1	1.6
Men	35-44	1,962	19.0	0.0	\$33,872	3.2	1.4
Men	45-54	2,119	20.5	0.0	\$40,549	3.2	1.3
Men	55-64	1,180	11.4	0.0	\$43,345	3.2	1.3
Men	65-Up	443	4.3	0.0	\$25,382	3.0	1.2
Men	N/A	6	0.1	0.0	\$15,460	1.5	1.0
Men	Total	10,335	100.0	46.2	\$28,005	3.0	1.5
N/A	N/A	2,912	100.0	0.0	\$8,448	1.6	1.1
N/A	Total	2,912	100.0	13.0	\$8,448	1.6	1.1
Total	00-19	1,458	6.5	0.0	\$3,791	2.5	1.7
Total	20-24	2,634	11.8	0.0	\$9,711	2.8	1.9
Total	25-34	4,396	19.7	0.0	\$20,705	3.1	1.6
Total	35-44	3,913	17.5	0.0	\$27,364	3.2	1.5
Total	45-54	4,175	18.7	0.0	\$31,370	3.3	1.4
Total	55-64	2,132	9.5	0.0	\$32,434	3.2	1.3
Total	65-Up	732	3.3	0.0	\$19,045	2.9	1.2
Total	N/A	2,922	13.1	0.0	\$8,460	1.6	1.1
Total	Total	22,362	100.0	100.0	\$20,928	2.9	1.5

Note: Persons worked any time during the year.

Industry Determination: Based on the industry of employment in which the person made the most money in the year.

N/A: Represents persons with demographic data that are unavailable.

N/A = Nonresidents, individuals for whom demographic data are not available.

Source: Demographics of Persons Working in Wyoming by County, Industry, Age, & Gender, 2000-2017.

Research & Planning, Wyoming Department of Workforce Services.

Prepared by M. Moore, Research & Planning, WY DWS, 6/12/18.



### Average Earnings by Age and Gender in the 54 & 55 - Professional & Business Services Industry in 2005

Gender	Age Group	Number	Age Percent	Gender Percent	Average Annual Wage	Average Quarters Worked	Average Annual Employers
Women	00-19	554	6.0	0.0	\$3,568	2.6	1.7
Women	20-24	1,116	12.2	0.0	\$9,860	2.9	1.9
Women	25-34	2,107	23.0	0.0	\$17,630	3.1	1.6
Women	35-44	1,938	21.2	0.0	\$22,031	3.3	1.6
Women	45-54	2,092	22.8	0.0	\$23,635	3.4	1.5
Women	55-64	1,033	11.3	0.0	\$19,960	3.2	1.4
Women	65-Up	315	3.4	0.0	\$10,663	3.0	1.3
Women	N/A	5	0.1	0.0	\$5,357	1.0	1.0
Women	Total	9,160	100.0	40.7	\$18,152	3.2	1.6
Men	00-19	797	7.5	0.0	\$4,516	2.4	1.7
Men	20-24	1,399	13.2	0.0	\$11,762	2.8	2.0
Men	25-34	2,332	22.0	0.0	\$25,794	3.1	1.6
Men	35-44	2,053	19.4	0.0	\$34,952	3.1	1.4
Men	45-54	2,168	20.5	0.0	\$43,371	3.2	1.3
Men	55-64	1,315	12.4	0.0	\$47,221	3.2	1.2
Men	65-Up	522	4.9	0.0	\$27,151	3.0	1.2
Men	N/A	3	0.0	0.0	\$34,761	2.3	1.0
Men	Total	10,589	100.0	47.0	\$30,443	3.0	1.5
N/A	N/A	2,778	100.0	0.0	\$10,135	1.8	1.1
N/A	Total	2,778	100.0	12.3	\$10,135	1.8	1.1
Total	00-19	1,351	6.0	0.0	\$4,127	2.5	1.7
Total	20-24	2,515	11.2	0.0	\$10,918	2.9	1.9
Total	25-34	4,439	19.7	0.0	\$21,919	3.1	1.6
Total	35-44	3,991	17.7	0.0	\$28,678	3.2	1.5
Total	45-54	4,260	18.9	0.0	\$33,679	3.3	1.4
Total	55-64	2,348	10.4	0.0	\$35,227	3.2	1.3
Total	65-Up	837	3.7	0.0	\$20,946	3.0	1.2
Total	N/A	2,786	12.4	0.0	\$10,153	1.8	1.1
Total	Total	22,527	100.0	100.0	\$22,941	2.9	1.5

Note: Persons worked any time during the year.

Industry Determination: Based on the industry of employment in which the person made the most money in the year.

N/A: Represents persons with demographic data that are unavailable.

N/A = Nonresidents, individuals for whom demographic data are not available.

Source: Demographics of Persons Working in Wyoming by County, Industry, Age, & Gender, 2000-2017.

Research & Planning, Wyoming Department of Workforce Services.

Prepared by M. Moore, Research & Planning, WY DWS, 6/12/18.

### Average Earnings by Age and Gender in the 54 & 55 - Professional & Business Services Industry in 2006

Gender	Age Group	Number	Age Percent	Gender Percent	Average Annual Wage	Average Quarters Worked	Average Annual Employers
Women	00-19	712	6.8	0.0	\$3,961	2.6	1.8
Women	20-24	1,363	13.1	0.0	\$10,034	2.9	2.0
Women	25-34	2,374	22.8	0.0	\$19,514	3.2	1.7
Women	35-44	2,074	19.9	0.0	\$23,644	3.3	1.6
Women	45-54	2,327	22.4	0.0	\$24,127	3.4	1.5
Women	55-64	1,194	11.5	0.0	\$21,915	3.3	1.4
Women	65-Up	356	3.4	0.0	\$11,576	3.0	1.3
Women	N/A	5	0.0	0.0	\$5,787	1.8	1.2
Women	Total	10,405	100.0	41.5	\$19,060	3.2	1.6
Men	00-19	912	7.9	0.0	\$5,062	2.4	1.8
Men	20-24	1,575	13.6	0.0	\$12,616	2.7	1.9
Men	25-34	2,552	22.0	0.0	\$27,677	3.1	1.6
Men	35-44	2,229	19.2	0.0	\$36,549	3.1	1.4
Men	45-54	2,270	19.6	0.0	\$45,009	3.2	1.3
Men	55-64	1,473	12.7	0.0	\$54,338	3.3	1.2
Men	65-Up	582	5.0	0.0	\$34,351	3.1	1.2
Men	N/A	2	0.0	0.0	\$47,102	2.5	1.0
Men	Total	11,595	100.0	46.3	\$32,676	3.0	1.5
N/A	N/A	3,070	100.0	0.0	\$12,088	1.9	1.1
N/A	Total	3,070	100.0	12.2	\$12,088	1.9	1.1
Total	00-19	1,624	6.5	0.0	\$4,580	2.5	1.8
Total	20-24	2,938	11.7	0.0	\$11,418	2.8	1.9
Total	25-34	4,926	19.6	0.0	\$23,743	3.1	1.6
Total	35-44	4,303	17.2	0.0	\$30,329	3.2	1.5
Total	45-54	4,597	18.3	0.0	\$34,438	3.3	1.4
Total	55-64	2,667	10.6	0.0	\$39,822	3.3	1.3
Total	65-Up	938	3.7	0.0	\$25,708	3.1	1.3
Total	N/A	3,077	12.3	0.0	\$12,100	1.9	1.1
Total	Total	25,070	100.0	100.0	\$24,504	3.0	1.5

Note: Persons worked any time during the year.

Industry Determination: Based on the industry of employment in which the person made the most money in the year.

N/A: Represents persons with demographic data that are unavailable.

N/A = Nonresidents, individuals for whom demographic data are not available.

Source: Demographics of Persons Working in Wyoming by County, Industry, Age, & Gender, 2000-2017.

Research & Planning, Wyoming Department of Workforce Services.

Prepared by M. Moore, Research & Planning, WY DWS, 6/12/18.

### Average Earnings by Age and Gender in the 54 & 55 - Professional & Business Services Industry in 2007

Gender	Age Group	Number	Age Percent	Gender Percent	Average Annual Wage	Average Quarters Worked	Average Annual Employers
Women	00-19	666	6.4	0.0	\$3,789	2.5	1.7
Women	20-24	1,337	12.9	0.0	\$10,623	2.8	1.8
Women	25-34	2,422	23.4	0.0	\$20,481	3.1	1.6
Women	35-44	2,044	19.7	0.0	\$25,130	3.2	1.6
Women	45-54	2,258	21.8	0.0	\$27,016	3.3	1.4
Women	55-64	1,250	12.1	0.0	\$23,905	3.3	1.3
Women	65-Up	371	3.6	0.0	\$12,690	3.1	1.3
Women	N/A	6	0.1	0.0	\$5,337	1.8	1.3
Women	Total	10,354	100.0	38.9	\$20,603	3.1	1.5
Men	00-19	894	7.1	0.0	\$5,540	2.4	1.6
Men	20-24	1,738	13.8	0.0	\$13,300	2.7	1.8
Men	25-34	2,897	23.0	0.0	\$29,602	3.1	1.5
Men	35-44	2,256	17.9	0.0	\$39,799	3.1	1.4
Men	45-54	2,491	19.8	0.0	\$49,445	3.1	1.3
Men	55-64	1,661	13.2	0.0	\$51,175	3.2	1.2
Men	65-Up	642	5.1	0.0	\$36,796	3.0	1.2
Men	N/A	10	0.1	0.0	\$5,944	1.5	1.3
Men	Total	12,589	100.0	47.3	\$34,591	3.0	1.5
N/A	N/A	3,671	100.0	0.0	\$12,506	1.8	1.1
N/A	Total	3,671	100.0	13.8	\$12,506	1.8	1.1
Total	00-19	1,560	5.9	0.0	\$4,792	2.4	1.7
Total	20-24	3,075	11.6	0.0	\$12,136	2.8	1.8
Total	25-34	5,319	20.0	0.0	\$25,449	3.1	1.6
Total	35-44	4,300	16.2	0.0	\$32,826	3.2	1.5
Total	45-54	4,749	17.8	0.0	\$38,780	3.2	1.4
Total	55-64	2,911	10.9	0.0	\$39,465	3.2	1.3
Total	65-Up	1,013	3.8	0.0	\$27,968	3.0	1.3
Total	N/A	3,687	13.9	0.0	\$12,476	1.8	1.1
Total	Total	26,614	100.0	100.0	\$26,103	2.9	1.5

Note: Persons worked any time during the year.

Industry Determination: Based on the industry of employment in which the person made the most money in the year.

N/A: Represents persons with demographic data that are unavailable.

N/A = Nonresidents, individuals for whom demographic data are not available.

Source: Demographics of Persons Working in Wyoming by County, Industry, Age, & Gender, 2000-2017.  
Research & Planning, Wyoming Department of Workforce Services.

Prepared by M. Moore, Research & Planning, WY DWS, 6/12/18.

### Average Earnings by Age and Gender in the 54 & 55 - Professional & Business Services Industry in 2008

Gender	Age Group	Number	Age Percent	Gender Percent	Average Annual Wage	Average Quarters Worked	Average Annual Employers
Women	00-19	600	5.7	0.0	\$4,200	2.6	1.6
Women	20-24	1,336	12.8	0.0	\$12,089	3.0	1.8
Women	25-34	2,383	22.8	0.0	\$22,457	3.2	1.6
Women	35-44	2,012	19.2	0.0	\$26,558	3.3	1.5
Women	45-54	2,337	22.3	0.0	\$28,538	3.4	1.4
Women	55-64	1,351	12.9	0.0	\$25,961	3.3	1.3
Women	65-Up	447	4.3	0.0	\$14,630	3.0	1.3
Women	N/A	1	0.0	0.0	\$6,610	2.0	1.0
Women	Total	10,467	100.0	39.2	\$22,349	3.2	1.5
Men	00-19	813	6.4	0.0	\$5,781	2.4	1.6
Men	20-24	1,656	13.1	0.0	\$15,086	2.8	1.8
Men	25-34	2,956	23.3	0.0	\$32,752	3.1	1.5
Men	35-44	2,316	18.3	0.0	\$40,932	3.1	1.4
Men	45-54	2,486	19.6	0.0	\$51,400	3.2	1.3
Men	55-64	1,801	14.2	0.0	\$55,272	3.2	1.2
Men	65-Up	636	5.0	0.0	\$36,887	3.1	1.2
Men	N/A	1	0.0	0.0	\$72,267	4.0	1.0
Men	Total	12,665	100.0	47.5	\$37,280	3.1	1.4
N/A	N/A	3,543	100.0	0.0	\$14,779	1.9	1.2
N/A	Total	3,543	100.0	13.3	\$14,779	1.9	1.2
Total	00-19	1,413	5.3	0.0	\$5,110	2.5	1.6
Total	20-24	2,992	11.2	0.0	\$13,748	2.9	1.8
Total	25-34	5,339	20.0	0.0	\$28,157	3.2	1.5
Total	35-44	4,328	16.2	0.0	\$34,250	3.2	1.5
Total	45-54	4,823	18.1	0.0	\$40,322	3.3	1.4
Total	55-64	3,152	11.8	0.0	\$42,708	3.3	1.3
Total	65-Up	1,083	4.1	0.0	\$27,701	3.0	1.2
Total	N/A	3,545	13.3	0.0	\$14,793	1.9	1.2
Total	Total	26,675	100.0	100.0	\$28,433	3.0	1.4

Note: Persons worked any time during the year.

Industry Determination: Based on the industry of employment in which the person made the most money in the year.

N/A: Represents persons with demographic data that are unavailable.

N/A = Nonresidents, individuals for whom demographic data are not available.

Source: Demographics of Persons Working in Wyoming by County, Industry, Age, & Gender, 2000-2017.

Research & Planning, Wyoming Department of Workforce Services.

Prepared by M. Moore, Research & Planning, WY DWS, 6/12/18.

### Average Earnings by Age and Gender in the 54 & 55 - Professional & Business Services Industry in 2009

Gender	Age Group	Number	Age Percent	Gender Percent	Average Annual Wage	Average Quarters Worked	Average Annual Employers
Women	00-19	475	5.0	0.0	\$3,379	2.4	1.4
Women	20-24	1,094	11.5	0.0	\$11,753	2.9	1.6
Women	25-34	2,250	23.6	0.0	\$22,372	3.2	1.4
Women	35-44	1,797	18.9	0.0	\$27,825	3.3	1.4
Women	45-54	2,146	22.6	0.0	\$30,141	3.4	1.4
Women	55-64	1,325	13.9	0.0	\$26,741	3.4	1.2
Women	65-Up	428	4.5	0.0	\$15,250	3.1	1.2
Women	N/A	1	0.0	0.0	\$3,880	1.0	1.0
<b>Women</b>	<b>Total</b>	<b>9,516</b>	<b>100.0</b>	<b>39.0</b>	<b>\$23,271</b>	<b>3.2</b>	<b>1.4</b>
Men	00-19	642	5.3	0.0	\$4,912	2.4	1.4
Men	20-24	1,497	12.3	0.0	\$14,126	2.7	1.6
Men	25-34	2,974	24.4	0.0	\$30,094	3.1	1.4
Men	35-44	2,261	18.6	0.0	\$40,865	3.1	1.3
Men	45-54	2,363	19.4	0.0	\$48,798	3.2	1.2
Men	55-64	1,785	14.6	0.0	\$55,499	3.2	1.1
Men	65-Up	664	5.4	0.0	\$34,775	3.1	1.2
Men	N/A	1	0.0	0.0	\$1,335	1.0	1.0
<b>Men</b>	<b>Total</b>	<b>12,187</b>	<b>100.0</b>	<b>49.9</b>	<b>\$36,405</b>	<b>3.1</b>	<b>1.3</b>
N/A	N/A	2,698	100.0	0.0	\$14,903	2.0	1.1
<b>N/A</b>	<b>Total</b>	<b>2,698</b>	<b>100.0</b>	<b>11.1</b>	<b>\$14,903</b>	<b>2.0</b>	<b>1.1</b>
Total	00-19	1,117	4.6	0.0	\$4,260	2.4	1.4
Total	20-24	2,591	10.6	0.0	\$13,124	2.8	1.6
Total	25-34	5,224	21.4	0.0	\$26,768	3.2	1.4
Total	35-44	4,058	16.6	0.0	\$35,091	3.2	1.4
Total	45-54	4,509	18.5	0.0	\$39,918	3.3	1.3
Total	55-64	3,110	12.7	0.0	\$43,247	3.3	1.2
Total	65-Up	1,092	4.5	0.0	\$27,122	3.1	1.2
Total	N/A	2,700	11.1	0.0	\$14,894	2.0	1.1
<b>Total</b>	<b>Total</b>	<b>24,401</b>	<b>100.0</b>	<b>100.0</b>	<b>\$28,905</b>	<b>3.0</b>	<b>1.3</b>

Note: Persons worked any time during the year.

Industry Determination: Based on the industry of employment in which the person made the most money in the year.

N/A: Represents persons with demographic data that are unavailable.

N/A = Nonresidents, individuals for whom demographic data are not available.

Source: Demographics of Persons Working in Wyoming by County, Industry, Age, & Gender, 2000-2017.

Research & Planning, Wyoming Department of Workforce Services.

Prepared by M. Moore, Research & Planning, WY DWS, 6/12/18.

### Average Earnings by Age and Gender in the 54 & 55 - Professional & Business Services Industry in 2010

Gender	Age Group	Number	Age Percent	Gender Percent	Average Annual Wage	Average Quarters Worked	Average Annual Employers
Women	00-19	430	4.6	0.0	\$3,542	2.4	1.4
Women	20-24	965	10.2	0.0	\$11,005	2.9	1.6
Women	25-34	2,295	24.4	0.0	\$22,181	3.2	1.5
Women	35-44	1,817	19.3	0.0	\$27,756	3.3	1.4
Women	45-54	2,061	21.9	0.0	\$29,529	3.3	1.4
Women	55-64	1,435	15.2	0.0	\$27,301	3.3	1.3
Women	65-Up	419	4.4	0.0	\$14,770	3.1	1.1
Women	N/A	2	0.0	0.0	\$5,158	1.0	1.0
Women	Total	9,424	100.0	38.2	\$23,315	3.2	1.4
Men	00-19	657	5.3	0.0	\$5,053	2.3	1.5
Men	20-24	1,462	11.8	0.0	\$12,752	2.6	1.6
Men	25-34	3,075	24.9	0.0	\$28,949	3.0	1.4
Men	35-44	2,306	18.7	0.0	\$41,317	3.1	1.3
Men	45-54	2,324	18.8	0.0	\$49,154	3.2	1.3
Men	55-64	1,841	14.9	0.0	\$57,013	3.2	1.2
Men	65-Up	684	5.5	0.0	\$38,124	3.1	1.2
Men	N/A	2	0.0	0.0	\$14,008	1.0	1.0
Men	Total	12,351	100.0	50.1	\$36,560	3.0	1.3
N/A	N/A	2,900	100.0	0.0	\$15,329	1.9	1.1
N/A	Total	2,900	100.0	11.8	\$15,329	1.9	1.1
Total	00-19	1,087	4.4	0.0	\$4,455	2.3	1.4
Total	20-24	2,427	9.8	0.0	\$12,057	2.7	1.6
Total	25-34	5,370	21.8	0.0	\$26,056	3.1	1.4
Total	35-44	4,123	16.7	0.0	\$35,341	3.2	1.3
Total	45-54	4,385	17.8	0.0	\$39,930	3.3	1.3
Total	55-64	3,276	13.3	0.0	\$43,998	3.3	1.2
Total	65-Up	1,103	4.5	0.0	\$29,252	3.1	1.1
Total	N/A	2,904	11.8	0.0	\$15,321	1.9	1.1
Total	Total	24,675	100.0	100.0	\$29,006	3.0	1.3

Note: Persons worked any time during the year.

Industry Determination: Based on the industry of employment in which the person made the most money in the year.

N/A: Represents persons with demographic data that are unavailable.

N/A = Nonresidents, individuals for whom demographic data are not available.

Source: Demographics of Persons Working in Wyoming by County, Industry, Age, & Gender, 2000-2017.

Research & Planning, Wyoming Department of Workforce Services.

Prepared by M. Moore, Research & Planning, WY DWS, 6/12/18.

### Average Earnings by Age and Gender in the 54 & 55 - Professional & Business Services Industry in 2011

Gender	Age Group	Number	Age Percent	Gender Percent	Average Annual Wage	Average Quarters Worked	Average Annual Employers
Women	00-19	451	4.7	0.0	\$4,003	2.5	1.5
Women	20-24	1,007	10.5	0.0	\$10,923	2.8	1.6
Women	25-34	2,334	24.3	0.0	\$22,691	3.2	1.5
Women	35-44	1,831	19.1	0.0	\$28,120	3.3	1.4
Women	45-54	2,021	21.0	0.0	\$30,165	3.3	1.4
Women	55-64	1,479	15.4	0.0	\$28,699	3.4	1.3
Women	65-Up	482	5.0	0.0	\$15,429	3.0	1.2
Women	N/A	1	0.0	0.0	\$2,240	1.0	1.0
Women	Total	9,606	100.0	37.1	\$23,745	3.2	1.4
Men	00-19	671	5.2	0.0	\$5,281	2.3	1.5
Men	20-24	1,544	11.9	0.0	\$14,544	2.7	1.6
Men	25-34	3,213	24.8	0.0	\$29,758	3.0	1.4
Men	35-44	2,451	18.9	0.0	\$41,659	3.0	1.3
Men	45-54	2,358	18.2	0.0	\$49,793	3.1	1.3
Men	55-64	1,986	15.3	0.0	\$57,575	3.2	1.2
Men	65-Up	722	5.6	0.0	\$41,033	3.0	1.1
Men	N/A	1	0.0	0.0	\$84,670	4.0	1.0
Men	Total	12,946	100.0	50.0	\$37,478	3.0	1.4
N/A	N/A	3,355	100.0	0.0	\$16,039	1.9	1.1
N/A	Total	3,355	100.0	13.0	\$16,039	1.9	1.1
Total	00-19	1,122	4.3	0.0	\$4,767	2.4	1.5
Total	20-24	2,551	9.8	0.0	\$13,114	2.8	1.6
Total	25-34	5,547	21.4	0.0	\$26,784	3.1	1.5
Total	35-44	4,282	16.5	0.0	\$35,870	3.2	1.4
Total	45-54	4,379	16.9	0.0	\$40,734	3.2	1.3
Total	55-64	3,465	13.4	0.0	\$45,249	3.3	1.2
Total	65-Up	1,204	4.6	0.0	\$30,783	3.0	1.2
Total	N/A	3,357	13.0	0.0	\$16,055	1.9	1.1
Total	Total	25,907	100.0	100.0	\$29,610	2.9	1.3

Note: Persons worked any time during the year.

Industry Determination: Based on the industry of employment in which the person made the most money in the year.

N/A: Represents persons with demographic data that are unavailable.

N/A = Nonresidents, individuals for whom demographic data are not available.

Source: Demographics of Persons Working in Wyoming by County, Industry, Age, & Gender, 2000-2017.

Research & Planning, Wyoming Department of Workforce Services.

Prepared by M. Moore, Research & Planning, WY DWS, 6/12/18.

### Average Earnings by Age and Gender in the 54 & 55 - Professional & Business Services Industry in 2012

Gender	Age Group	Number	Age Percent	Gender Percent	Average Annual Wage	Average Quarters Worked	Average Annual Employers
Women	00-19	425	4.4	0.0	\$3,595	2.5	1.5
Women	20-24	966	10.0	0.0	\$11,624	2.9	1.7
Women	25-34	2,309	23.8	0.0	\$23,609	3.2	1.5
Women	35-44	1,862	19.2	0.0	\$29,788	3.4	1.4
Women	45-54	2,016	20.8	0.0	\$31,675	3.4	1.4
Women	55-64	1,591	16.4	0.0	\$28,926	3.4	1.3
Women	65-Up	515	5.3	0.0	\$20,415	3.0	1.1
<b>Women</b>	<b>Total</b>	<b>9,684</b>	<b>100.0</b>	<b>37.8</b>	<b>\$25,106</b>	<b>3.2</b>	<b>1.4</b>
Men	00-19	596	4.7	0.0	\$5,290	2.4	1.5
Men	20-24	1,515	11.9	0.0	\$14,827	2.7	1.7
Men	25-34	3,156	24.7	0.0	\$31,544	3.1	1.4
Men	35-44	2,433	19.1	0.0	\$44,847	3.2	1.3
Men	45-54	2,244	17.6	0.0	\$52,070	3.2	1.3
Men	55-64	2,026	15.9	0.0	\$61,624	3.3	1.2
Men	65-Up	786	6.2	0.0	\$45,463	3.1	1.2
Men	N/A	3	0.0	0.0	\$23,981	2.0	1.0
<b>Men</b>	<b>Total</b>	<b>12,759</b>	<b>100.0</b>	<b>49.8</b>	<b>\$40,111</b>	<b>3.1</b>	<b>1.4</b>
N/A	N/A	3,173	100.0	0.0	\$18,481	2.0	1.1
<b>N/A</b>	<b>Total</b>	<b>3,173</b>	<b>100.0</b>	<b>12.4</b>	<b>\$18,481</b>	<b>2.0</b>	<b>1.1</b>
Total	00-19	1,021	4.0	0.0	\$4,584	2.4	1.5
Total	20-24	2,481	9.7	0.0	\$13,580	2.8	1.7
Total	25-34	5,465	21.3	0.0	\$28,191	3.1	1.5
Total	35-44	4,295	16.8	0.0	\$38,319	3.2	1.4
Total	45-54	4,260	16.6	0.0	\$42,418	3.3	1.3
Total	55-64	3,617	14.1	0.0	\$47,241	3.3	1.2
Total	65-Up	1,301	5.1	0.0	\$35,548	3.1	1.2
Total	N/A	3,176	12.4	0.0	\$18,486	2.0	1.1
<b>Total</b>	<b>Total</b>	<b>25,616</b>	<b>100.0</b>	<b>100.0</b>	<b>\$31,759</b>	<b>3.0</b>	<b>1.4</b>

Note: Persons worked any time during the year.

Industry Determination: Based on the industry of employment in which the person made the most money in the year.

N/A: Represents persons with demographic data that are unavailable.

N/A = Nonresidents, individuals for whom demographic data are not available.

Source: Demographics of Persons Working in Wyoming by County, Industry, Age, & Gender, 2000-2017.

Research & Planning, Wyoming Department of Workforce Services.

Prepared by M. Moore, Research & Planning, WY DWS, 6/12/18.



### Average Earnings by Age and Gender in the 54 & 55 - Professional & Business Services Industry in 2013

Gender	Age Group	Number	Age Percent	Gender Percent	Average Annual Wage	Average Quarters Worked	Average Annual Employers
Women	00-19	391	4.1	0.0	\$3,628	2.4	1.4
Women	20-24	927	9.7	0.0	\$11,980	2.9	1.7
Women	25-34	2,251	23.5	0.0	\$24,000	3.2	1.5
Women	35-44	1,858	19.4	0.0	\$30,051	3.3	1.4
Women	45-54	1,971	20.6	0.0	\$32,969	3.4	1.4
Women	55-64	1,619	16.9	0.0	\$30,159	3.4	1.3
Women	65-Up	554	5.8	0.0	\$18,453	3.1	1.2
Women	N/A	1	0.0	0.0	\$6,532	1.0	1.0
<b>Women</b>	<b>Total</b>	<b>9,572</b>	<b>100.0</b>	<b>37.2</b>	<b>\$25,744</b>	<b>3.2</b>	<b>1.4</b>
Men	00-19	626	4.8	0.0	\$5,443	2.3	1.6
Men	20-24	1,510	11.6	0.0	\$14,821	2.7	1.7
Men	25-34	3,226	24.8	0.0	\$31,976	3.1	1.5
Men	35-44	2,464	18.9	0.0	\$45,814	3.2	1.4
Men	45-54	2,285	17.6	0.0	\$50,975	3.2	1.3
Men	55-64	2,062	15.8	0.0	\$61,903	3.3	1.2
Men	65-Up	837	6.4	0.0	\$43,417	3.1	1.2
Men	N/A	3	0.0	0.0	\$29,543	2.7	1.3
<b>Men</b>	<b>Total</b>	<b>13,013</b>	<b>100.0</b>	<b>50.6</b>	<b>\$40,143</b>	<b>3.1</b>	<b>1.4</b>
N/A	N/A	3,153	100.0	0.0	\$18,712	2.0	1.2
<b>N/A</b>	<b>Total</b>	<b>3,153</b>	<b>100.0</b>	<b>12.3</b>	<b>\$18,712</b>	<b>2.0</b>	<b>1.2</b>
Total	00-19	1,017	4.0	0.0	\$4,746	2.4	1.5
Total	20-24	2,437	9.5	0.0	\$13,740	2.8	1.7
Total	25-34	5,477	21.3	0.0	\$28,698	3.1	1.5
Total	35-44	4,322	16.8	0.0	\$39,038	3.2	1.4
Total	45-54	4,256	16.5	0.0	\$42,636	3.3	1.3
Total	55-64	3,681	14.3	0.0	\$47,941	3.3	1.2
Total	65-Up	1,391	5.4	0.0	\$33,474	3.1	1.2
Total	N/A	3,157	12.3	0.0	\$18,719	2.0	1.2
<b>Total</b>	<b>Total</b>	<b>25,738</b>	<b>100.0</b>	<b>100.0</b>	<b>\$32,163</b>	<b>3.0</b>	<b>1.4</b>

Note: Persons worked any time during the year.

Industry Determination: Based on the industry of employment in which the person made the most money in the year.

N/A: Represents persons with demographic data that are unavailable.

N/A = Nonresidents, individuals for whom demographic data are not available.

Source: Demographics of Persons Working in Wyoming by County, Industry, Age, & Gender, 2000-2017.

Research & Planning, Wyoming Department of Workforce Services.

Prepared by M. Moore, Research & Planning, WY DWS, 6/12/18.

### Average Earnings by Age and Gender in the 54 & 55 - Professional & Business Services Industry in 2014

Gender	Age Group	Number	Age Percent	Gender Percent	Average Annual Wage	Average Quarters Worked	Average Annual Employers
Women	00-19	410	4.3	0.0	\$4,203	2.5	1.6
Women	20-24	934	9.8	0.0	\$12,758	2.9	1.8
Women	25-34	2,223	23.4	0.0	\$25,043	3.3	1.5
Women	35-44	1,906	20.1	0.0	\$31,056	3.3	1.4
Women	45-54	1,854	19.5	0.0	\$34,813	3.4	1.4
Women	55-64	1,604	16.9	0.0	\$32,905	3.5	1.3
Women	65-Up	559	5.9	0.0	\$18,490	3.2	1.2
Women	N/A	1	0.0	0.0	\$2,901	1.0	1.0
<b>Women</b>	<b>Total</b>	<b>9,491</b>	<b>100.0</b>	<b>36.5</b>	<b>\$26,990</b>	<b>3.3</b>	<b>1.4</b>
Men	00-19	672	5.1	0.0	\$6,141	2.4	1.6
Men	20-24	1,551	11.8	0.0	\$16,397	2.8	1.8
Men	25-34	3,329	25.3	0.0	\$33,650	3.1	1.5
Men	35-44	2,383	18.1	0.0	\$50,392	3.2	1.4
Men	45-54	2,246	17.0	0.0	\$57,149	3.2	1.3
Men	55-64	2,095	15.9	0.0	\$61,485	3.3	1.2
Men	65-Up	899	6.8	0.0	\$46,749	3.1	1.2
Men	N/A	1	0.0	0.0	\$15,600	1.0	1.0
<b>Men</b>	<b>Total</b>	<b>13,176</b>	<b>100.0</b>	<b>50.6</b>	<b>\$42,568</b>	<b>3.1</b>	<b>1.4</b>
N/A	N/A	3,371	100.0	0.0	\$18,424	2.0	1.1
<b>N/A</b>	<b>Total</b>	<b>3,371</b>	<b>100.0</b>	<b>12.9</b>	<b>\$18,424</b>	<b>2.0</b>	<b>1.1</b>
Total	00-19	1,082	4.2	0.0	\$5,407	2.4	1.6
Total	20-24	2,485	9.5	0.0	\$15,029	2.9	1.8
Total	25-34	5,552	21.3	0.0	\$30,204	3.2	1.5
Total	35-44	4,289	16.5	0.0	\$41,799	3.3	1.4
Total	45-54	4,100	15.7	0.0	\$47,048	3.3	1.4
Total	55-64	3,699	14.2	0.0	\$49,092	3.4	1.2
Total	65-Up	1,458	5.6	0.0	\$35,914	3.2	1.2
Total	N/A	3,373	13.0	0.0	\$18,419	2.0	1.1
<b>Total</b>	<b>Total</b>	<b>26,038</b>	<b>100.0</b>	<b>100.0</b>	<b>\$33,764</b>	<b>3.0</b>	<b>1.4</b>

Note: Persons worked any time during the year.

Industry Determination: Based on the industry of employment in which the person made the most money in the year.

N/A: Represents persons with demographic data that are unavailable.

N/A = Nonresidents, individuals for whom demographic data are not available.

Source: Demographics of Persons Working in Wyoming by County, Industry, Age, & Gender, 2000-2017.

Research & Planning, Wyoming Department of Workforce Services.

Prepared by M. Moore, Research & Planning, WY DWS, 6/12/18.

### Average Earnings by Age and Gender in the 54 & 55 - Professional & Business Services Industry in 2015

Gender	Age Group	Number	Age Percent	Gender Percent	Average Annual Wage	Average Quarters Worked	Average Annual Employers
Women	00-19	409	4.3	0.0	\$5,482	2.6	1.6
Women	20-24	927	9.7	0.0	\$13,198	3.0	1.8
Women	25-34	2,235	23.4	0.0	\$25,888	3.3	1.5
Women	35-44	1,952	20.5	0.0	\$33,287	3.4	1.4
Women	45-54	1,784	18.7	0.0	\$35,763	3.4	1.4
Women	55-64	1,635	17.1	0.0	\$34,701	3.4	1.3
Women	65-Up	590	6.2	0.0	\$19,860	3.2	1.2
Women	N/A	4	0.0	0.0	\$6,342	2.0	1.0
<b>Women</b>	<b>Total</b>	<b>9,536</b>	<b>100.0</b>	<b>36.1</b>	<b>\$28,271</b>	<b>3.3</b>	<b>1.4</b>
Men	00-19	626	4.8	0.0	\$5,835	2.4	1.5
Men	20-24	1,444	11.0	0.0	\$15,952	2.8	1.7
Men	25-34	3,220	24.6	0.0	\$34,583	3.2	1.5
Men	35-44	2,451	18.7	0.0	\$48,809	3.2	1.4
Men	45-54	2,244	17.2	0.0	\$56,750	3.2	1.3
Men	55-64	2,113	16.2	0.0	\$60,449	3.2	1.2
Men	65-Up	984	7.5	0.0	\$51,956	3.0	1.1
<b>Men</b>	<b>Total</b>	<b>13,082</b>	<b>100.0</b>	<b>49.6</b>	<b>\$43,103</b>	<b>3.1</b>	<b>1.4</b>
N/A	N/A	3,776	100.0	0.0	\$16,328	1.9	1.1
<b>N/A</b>	<b>Total</b>	<b>3,776</b>	<b>100.0</b>	<b>14.3</b>	<b>\$16,328</b>	<b>1.9</b>	<b>1.1</b>
Total	00-19	1,035	3.9	0.0	\$5,696	2.5	1.6
Total	20-24	2,371	9.0	0.0	\$14,875	2.9	1.8
Total	25-34	5,455	20.7	0.0	\$31,021	3.2	1.5
Total	35-44	4,403	16.7	0.0	\$41,928	3.3	1.4
Total	45-54	4,028	15.3	0.0	\$47,454	3.3	1.4
Total	55-64	3,748	14.2	0.0	\$49,217	3.3	1.3
Total	65-Up	1,574	6.0	0.0	\$39,925	3.1	1.2
Total	N/A	3,780	14.3	0.0	\$16,317	1.9	1.1
<b>Total</b>	<b>Total</b>	<b>26,394</b>	<b>100.0</b>	<b>100.0</b>	<b>\$33,914</b>	<b>3.0</b>	<b>1.4</b>

Note: Persons worked any time during the year.

Industry Determination: Based on the industry of employment in which the person made the most money in the year.

N/A: Represents persons with demographic data that are unavailable.

N/A = Nonresidents, individuals for whom demographic data are not available.

Source: Demographics of Persons Working in Wyoming by County, Industry, Age, & Gender, 2000-2017.  
Research & Planning, Wyoming Department of Workforce Services.

Prepared by M. Moore, Research & Planning, WY DWS, 6/12/18.

### Average Earnings by Age and Gender in the 54 & 55 - Professional & Business Services Industry in 2016

Gender	Age Group	Number	Age Percent	Gender Percent	Average Annual Wage	Average Quarters Worked	Average Annual Employers
Women	00-19	344	3.7	0.0	\$4,779	2.6	1.5
Women	20-24	850	9.2	0.0	\$13,459	3.0	1.7
Women	25-34	2,189	23.6	0.0	\$26,196	3.2	1.5
Women	35-44	1,924	20.7	0.0	\$33,479	3.4	1.4
Women	45-54	1,785	19.2	0.0	\$36,480	3.4	1.4
Women	55-64	1,613	17.4	0.0	\$34,642	3.5	1.3
Women	65-Up	578	6.2	0.0	\$22,569	3.3	1.2
Women	N/A	2	0.0	0.0	\$8,038	2.5	1.0
Women	Total	9,285	100.0	37.3	\$28,960	3.3	1.4
Men	00-19	533	4.4	0.0	\$5,370	2.4	1.4
Men	20-24	1,313	10.7	0.0	\$15,117	2.8	1.7
Men	25-34	3,029	24.8	0.0	\$31,353	3.1	1.5
Men	35-44	2,403	19.6	0.0	\$46,811	3.2	1.4
Men	45-54	2,049	16.7	0.0	\$56,329	3.2	1.3
Men	55-64	2,002	16.4	0.0	\$60,070	3.3	1.2
Men	65-Up	904	7.4	0.0	\$50,296	3.2	1.1
Men	N/A	2	0.0	0.0	\$4,801	1.5	1.0
Men	Total	12,235	100.0	49.2	\$41,792	3.1	1.4
N/A	N/A	3,372	100.0	0.0	\$14,524	2.0	1.1
N/A	Total	3,372	100.0	13.5	\$14,524	2.0	1.1
Total	00-19	877	3.5	0.0	\$5,138	2.5	1.5
Total	20-24	2,163	8.7	0.0	\$14,466	2.9	1.7
Total	25-34	5,218	21.0	0.0	\$29,190	3.2	1.5
Total	35-44	4,327	17.4	0.0	\$40,883	3.3	1.4
Total	45-54	3,834	15.4	0.0	\$47,088	3.3	1.4
Total	55-64	3,615	14.5	0.0	\$48,724	3.4	1.3
Total	65-Up	1,482	6.0	0.0	\$39,482	3.2	1.2
Total	N/A	3,376	13.6	0.0	\$14,515	2.0	1.1
Total	Total	24,892	100.0	100.0	\$33,312	3.0	1.4

Note: Persons worked any time during the year.

Industry Determination: Based on the industry of employment in which the person made the most money in the year.

N/A: Represents persons with demographic data that are unavailable.

N/A = Nonresidents, individuals for whom demographic data are not available.

Source: Demographics of Persons Working in Wyoming by County, Industry, Age, & Gender, 2000-2017.

Research & Planning, Wyoming Department of Workforce Services.

Prepared by M. Moore, Research & Planning, WY DWS, 6/12/18.

### Average Earnings by Age and Gender in the 54 & 55 - Professional & Business Services Industry in 2017

Gender	Age Group	Number	Age Percent	Gender Percent	Average Annual Wage	Average Quarters Worked	Average Annual Employers
Women	00-19	333	3.7	0.0	\$4,288	2.5	1.5
Women	20-24	762	8.5	0.0	\$14,095	3.0	1.7
Women	25-34	2,033	22.6	0.0	\$27,403	3.3	1.5
Women	35-44	1,875	20.8	0.0	\$35,130	3.4	1.4
Women	45-54	1,705	18.9	0.0	\$39,624	3.5	1.4
Women	55-64	1,648	18.3	0.0	\$36,477	3.5	1.3
Women	65-Up	642	7.1	0.0	\$22,063	3.2	1.1
Women	N/A	1	0.0	0.0	\$11,496	3.0	1.0
<b>Women</b>	<b>Total</b>	<b>8,999</b>	<b>100.0</b>	<b>35.8</b>	<b>\$30,625</b>	<b>3.3</b>	<b>1.4</b>
Men	00-19	575	4.7	0.0	\$5,605	2.4	1.5
Men	20-24	1,287	10.6	0.0	\$15,948	2.8	1.7
Men	25-34	2,899	23.8	0.0	\$34,583	3.2	1.6
Men	35-44	2,408	19.8	0.0	\$49,290	3.3	1.4
Men	45-54	2,025	16.6	0.0	\$59,244	3.3	1.3
Men	55-64	2,027	16.6	0.0	\$59,220	3.3	1.2
Men	65-Up	958	7.9	0.0	\$51,074	3.2	1.2
Men	N/A	2	0.0	0.0	\$26,829	2.5	1.0
<b>Men</b>	<b>Total</b>	<b>12,181</b>	<b>100.0</b>	<b>48.5</b>	<b>\$43,649</b>	<b>3.2</b>	<b>1.4</b>
N/A	N/A	3,941	100.0	0.0	\$16,618	2.0	1.2
<b>N/A</b>	<b>Total</b>	<b>3,941</b>	<b>100.0</b>	<b>15.7</b>	<b>\$16,618</b>	<b>2.0</b>	<b>1.2</b>
Total	00-19	908	3.6	0.0	\$5,122	2.4	1.5
Total	20-24	2,049	8.2	0.0	\$15,259	2.9	1.7
Total	25-34	4,932	19.6	0.0	\$31,623	3.2	1.5
Total	35-44	4,283	17.0	0.0	\$43,091	3.4	1.4
Total	45-54	3,730	14.8	0.0	\$50,276	3.4	1.3
Total	55-64	3,675	14.6	0.0	\$49,021	3.4	1.2
Total	65-Up	1,600	6.4	0.0	\$39,433	3.2	1.2
Total	N/A	3,944	15.7	0.0	\$16,622	2.0	1.2
<b>Total</b>	<b>Total</b>	<b>25,121</b>	<b>100.0</b>	<b>100.0</b>	<b>\$34,743</b>	<b>3.0</b>	<b>1.4</b>

Note: Persons worked any time during the year.

Industry Determination: Based on the industry of employment in which the person made the most money in the year.

N/A: Represents persons with demographic data that are unavailable.

N/A = Nonresidents, individuals for whom demographic data are not available.

Source: Demographics of Persons Working in Wyoming by County, Industry, Age, & Gender, 2000-2017.

Research & Planning, Wyoming Department of Workforce Services.

Prepared by M. Moore, Research & Planning, WY DWS, 6/12/18.