

Wyoming Information (NAICS 51) at a Glance, 2017

Demographics of Persons Working in Wyoming by County, Industry, Age, & Gender, 2000-2017

Table: Total Number of Persons Working in Information (NAICS 51) at Any Time by Gender and Age, 2016-2017

Gender	2016	2017	Change	
			N	%
Women	1,671	1,633	-38	-2.3
Men	2,494	2,396	-98	-3.9
Nonresidents	206	251	45	21.8
Total	4,371	4,280	-91	-2.1

Age	2016	2017	Change	
			N	%
00-19	340	347	7	2.1
20-24	324	325	1	0.3
25-34	975	897	-78	-8.0
35-44	851	817	-34	-4.0
45-54	784	747	-37	-4.7
55-64	661	653	-8	-1.2
65-Up	228	241	13	5.7
Nonresidents	208	253	45	21.6
Total	4,371	4,280	-91	-2.1

Women's Wages as % of Men's Wages

Information (NAICS 51): 60.6%

Total, All Industries: 62.7%

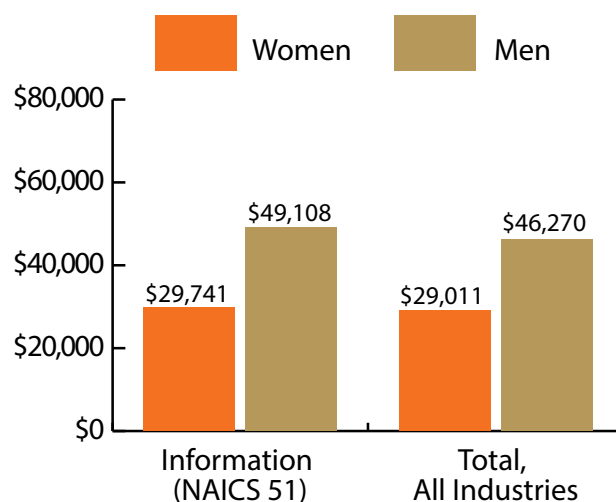


Figure: Average Annual Wages by Gender, 2017

Total = 4,280

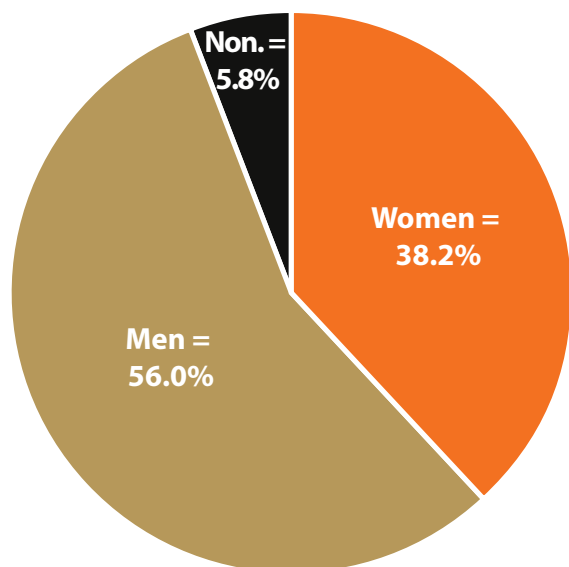


Figure: Persons Working by Gender, 2017

Total = 4,280

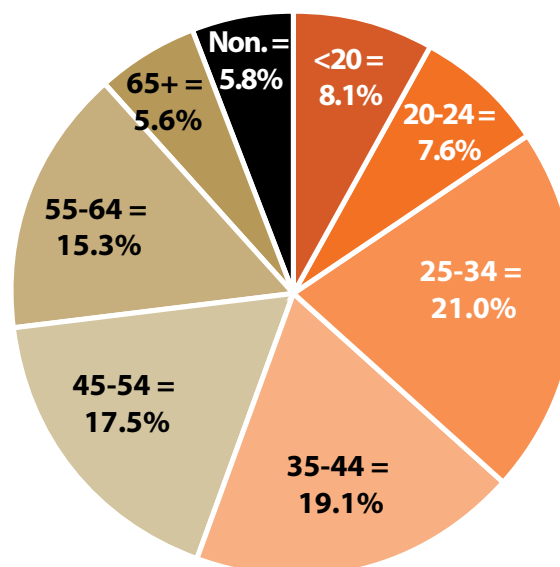


Figure: Persons Working by Age, 2017

Note: Nonresidents are individuals for whom demographic data are not available.

Source: Demographics of Persons Working in Wyoming by County, Industry, Age, & Gender, 2000-2017. Research & Planning, Wyoming Department of Workforce Services. Prepared by M. Moore, Research & Planning, WY DWS, 6/12/18.

Persons Working in Information (NAICS 51) in Wyoming by Gender and Age, 2000-2017

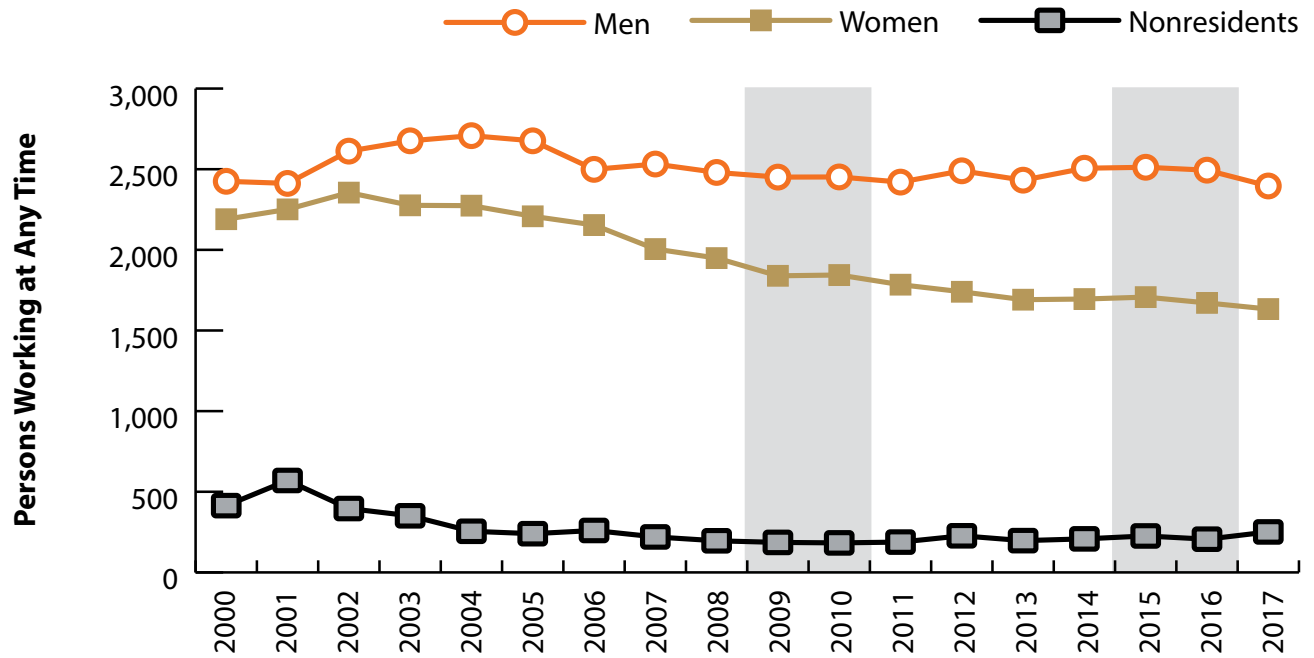


Figure: Persons Working in Information (NAICS 51) in Wyoming at Any Time by Gender, 2000-2017

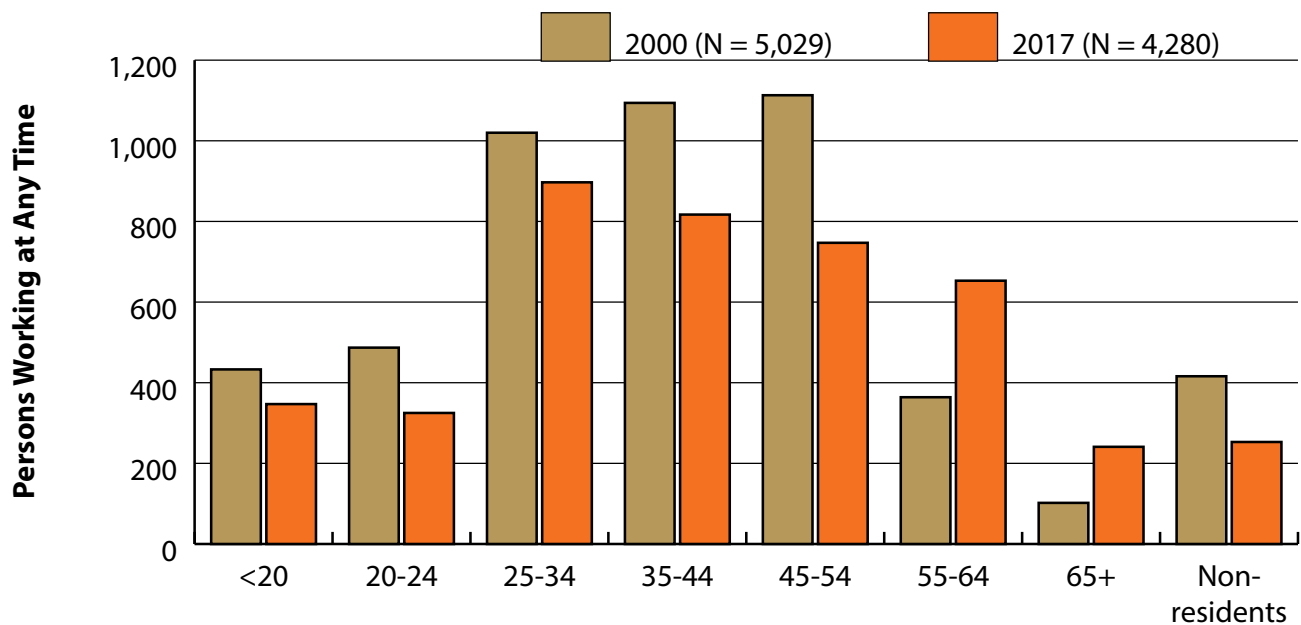


Figure: Persons Working in Information (NAICS 51) in Wyoming at Any Time by Age, 2000-2017

Note: Nonresidents are individuals for whom demographic data are not available. Shaded areas indicate periods of economic downturn: 2009Q1-2010Q1 and 2015Q2-2016Q4. Source: Demographics of Persons Working in Wyoming by County, Industry, Age, & Gender, 2000-2017. Research & Planning, Wyoming Department of Workforce Services. Prepared by M. Moore, Research & Planning, WY DWS, 6/12/18.

Wages for Persons Working in Information (NAICS 51) in Wyoming by Gender, 2000-2017

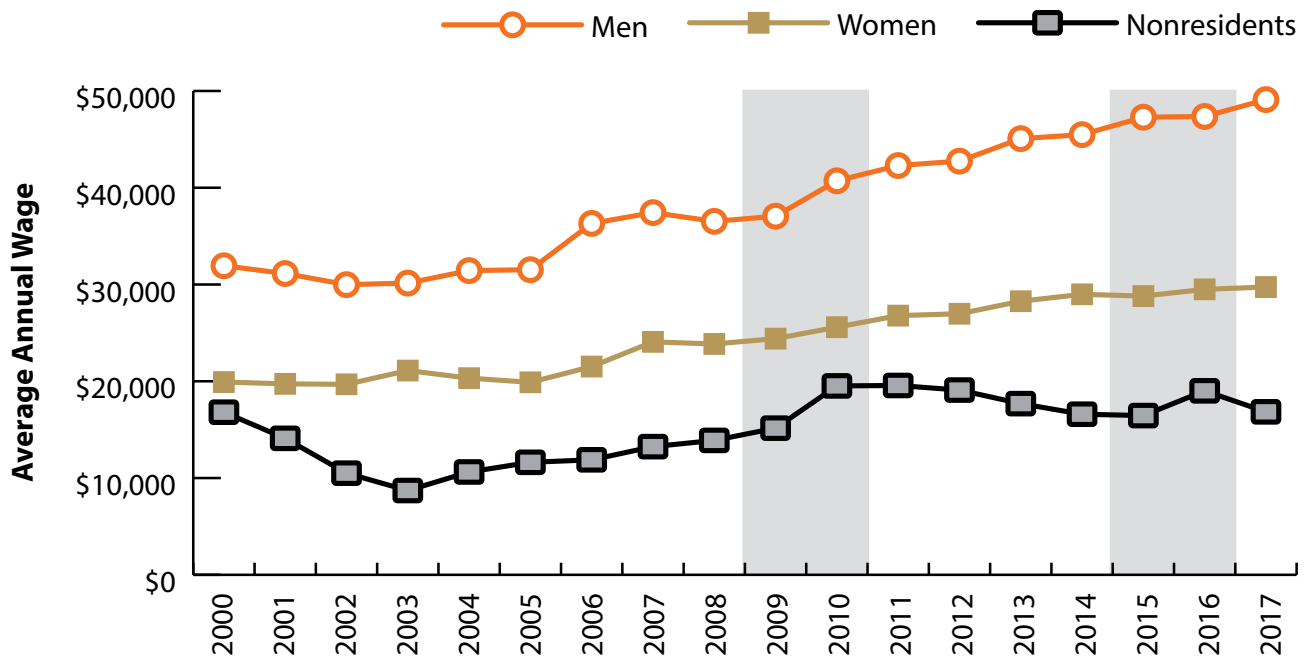


Figure: Average Annual Wage for Persons Working in Information (NAICS 51) in Wyoming at Any Time by Age, 2000-2017

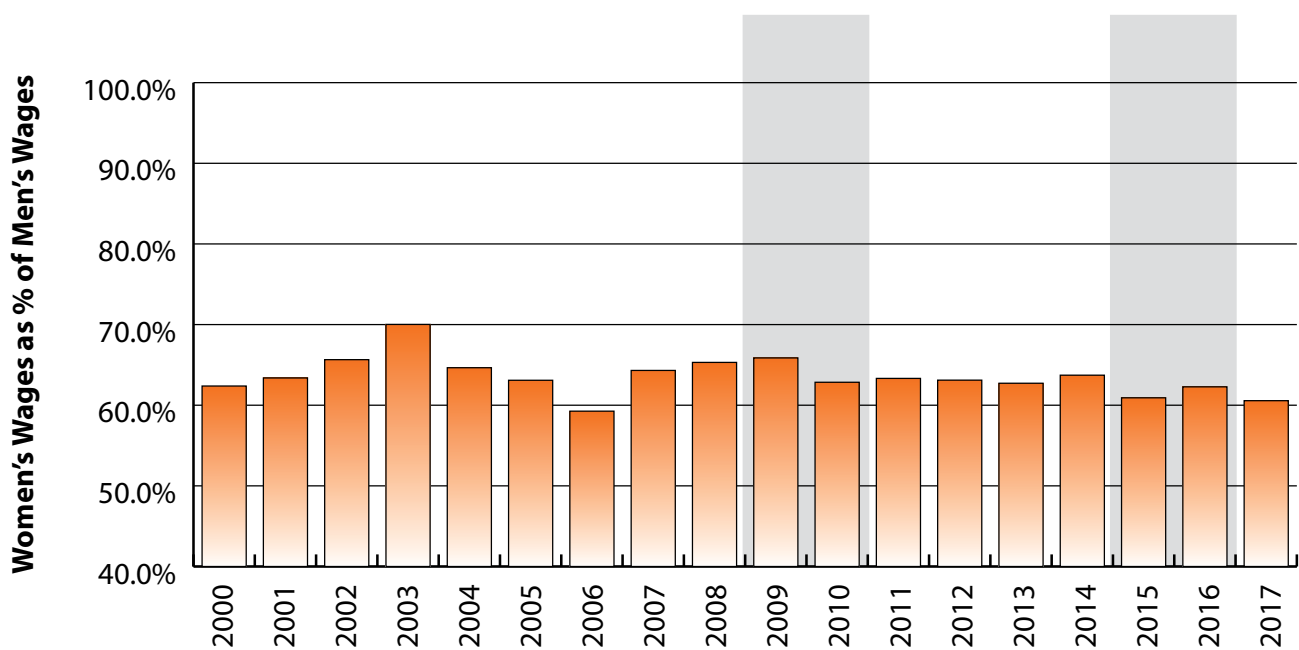


Figure: Women's Average Annual Wages as a Percent of Men's Wages for Persons Working in Information (NAICS 51) in Wyoming at Any Time by Age, 2000-2017

Note: Nonresidents are individuals for whom demographic data are not available.
 Shaded areas indicate periods of economic downturn: 2009Q1-2010Q1 and 2015Q2-2016Q4.
 Source: Demographics of Persons Working in Wyoming by County, Industry, Age, & Gender, 2000-2017. Research & Planning, Wyoming Department of Workforce Services. Prepared by M. Moore, Research & Planning, WY DWS, 6/12/18.

Average Earnings by Age and Gender in the 51 - Information Industry in 2000

Gender	Age Group	Number	Age Percent	Gender Percent	Average Annual Wage	Average Quarters Worked	Average Annual Employers
Women	00-19	193	8.8	0.0	\$2,856	2.8	1.6
Women	20-24	241	11.0	0.0	\$10,585	3.2	1.8
Women	25-34	485	22.1	0.0	\$19,505	3.4	1.5
Women	35-44	575	26.3	0.0	\$23,555	3.6	1.4
Women	45-54	500	22.8	0.0	\$27,135	3.6	1.3
Women	55-64	138	6.3	0.0	\$22,313	3.6	1.3
Women	65-Up	56	2.6	0.0	\$15,079	3.2	1.1
Women	N/A	2	0.1	0.0	\$17,294	2.5	1.0
Women	Total	2,190	100.0	43.5	\$19,923	3.4	1.4
Men	00-19	240	9.9	0.0	\$3,013	2.8	1.6
Men	20-24	246	10.1	0.0	\$12,712	3.1	1.7
Men	25-34	535	22.1	0.0	\$25,772	3.5	1.5
Men	35-44	519	21.4	0.0	\$36,678	3.6	1.3
Men	45-54	613	25.3	0.0	\$48,731	3.6	1.2
Men	55-64	226	9.3	0.0	\$43,642	3.5	1.2
Men	65-Up	46	1.9	0.0	\$22,586	3.3	1.1
Men	Total	2,425	100.0	48.2	\$31,938	3.4	1.4
N/A	N/A	414	100.0	0.0	\$16,804	2.0	1.1
N/A	Total	414	100.0	8.2	\$16,804	2.0	1.1
Total	00-19	433	8.6	0.0	\$2,943	2.8	1.6
Total	20-24	487	9.7	0.0	\$11,659	3.2	1.8
Total	25-34	1,020	20.3	0.0	\$22,792	3.5	1.5
Total	35-44	1,094	21.8	0.0	\$29,781	3.6	1.4
Total	45-54	1,113	22.1	0.0	\$39,029	3.6	1.2
Total	55-64	364	7.2	0.0	\$35,555	3.5	1.2
Total	65-Up	102	2.0	0.0	\$18,465	3.2	1.1
Total	N/A	416	8.3	0.0	\$16,807	2.0	1.1
Total	Total	5,029	100.0	100.0	\$25,460	3.3	1.4

Note: Persons worked any time during the year.

Industry Determination: Based on the industry of employment in which the person made the most money in the year.

N/A: Represents persons with demographic data that are unavailable.

N/A = Nonresidents, individuals for whom demographic data are not available.

Source: Demographics of Persons Working in Wyoming by County, Industry, Age, & Gender, 2000-2017.

Research & Planning, Wyoming Department of Workforce Services.

Prepared by M. Moore, Research & Planning, WY DWS, 6/12/18.

Average Earnings by Age and Gender in the 51 - Information Industry in 2001

Gender	Age Group	Number	Age Percent	Gender Percent	Average Annual Wage	Average Quarters Worked	Average Annual Employers
Women	00-19	221	9.8	0.0	\$2,694	2.6	1.5
Women	20-24	260	11.6	0.0	\$11,493	3.1	1.8
Women	25-34	513	22.8	0.0	\$20,200	3.4	1.6
Women	35-44	553	24.6	0.0	\$23,395	3.5	1.4
Women	45-54	472	21.0	0.0	\$27,774	3.6	1.3
Women	55-64	175	7.8	0.0	\$20,398	3.3	1.2
Women	65-Up	55	2.4	0.0	\$15,165	3.2	1.1
Women	N/A	2	0.1	0.0	\$11,732	2.5	1.0
Women	Total	2,251	100.0	43.0	\$19,733	3.3	1.5
Men	00-19	243	10.1	0.0	\$3,501	2.7	1.5
Men	20-24	254	10.5	0.0	\$13,386	3.1	1.7
Men	25-34	526	21.8	0.0	\$26,083	3.3	1.4
Men	35-44	495	20.5	0.0	\$38,946	3.6	1.3
Men	45-54	599	24.8	0.0	\$44,547	3.6	1.2
Men	55-64	228	9.5	0.0	\$41,782	3.5	1.2
Men	65-Up	67	2.8	0.0	\$24,439	2.8	1.2
Men	Total	2,412	100.0	46.1	\$31,134	3.4	1.3
N/A	N/A	570	100.0	0.0	\$14,103	1.5	1.1
N/A	Total	570	100.0	10.9	\$14,103	1.5	1.1
Total	00-19	464	8.9	0.0	\$3,116	2.7	1.5
Total	20-24	514	9.8	0.0	\$12,428	3.1	1.8
Total	25-34	1,039	19.9	0.0	\$23,178	3.4	1.5
Total	35-44	1,048	20.0	0.0	\$30,740	3.5	1.4
Total	45-54	1,071	20.5	0.0	\$37,155	3.6	1.2
Total	55-64	403	7.7	0.0	\$32,496	3.4	1.2
Total	65-Up	122	2.3	0.0	\$20,258	3.0	1.1
Total	N/A	572	10.9	0.0	\$14,094	1.5	1.1
Total	Total	5,233	100.0	100.0	\$24,375	3.1	1.4

Note: Persons worked any time during the year.

Industry Determination: Based on the industry of employment in which the person made the most money in the year.

N/A: Represents persons with demographic data that are unavailable.

N/A = Nonresidents, individuals for whom demographic data are not available.

Source: Demographics of Persons Working in Wyoming by County, Industry, Age, & Gender, 2000-2017.

Research & Planning, Wyoming Department of Workforce Services.

Prepared by M. Moore, Research & Planning, WY DWS, 6/12/18.

Average Earnings by Age and Gender in the 51 - Information Industry in 2002

Gender	Age Group	Number	Age Percent	Gender Percent	Average Annual Wage	Average Quarters Worked	Average Annual Employers
Women	00-19	254	10.8	0.0	\$2,530	2.7	1.6
Women	20-24	296	12.6	0.0	\$10,452	3.1	1.8
Women	25-34	544	23.1	0.0	\$19,705	3.4	1.6
Women	35-44	517	22.0	0.0	\$24,585	3.5	1.4
Women	45-54	502	21.3	0.0	\$27,722	3.5	1.3
Women	55-64	193	8.2	0.0	\$22,603	3.4	1.2
Women	65-Up	47	2.0	0.0	\$18,739	3.6	1.2
Women	N/A	2	0.1	0.0	\$15,366	2.5	1.0
Women	Total	2,355	100.0	43.9	\$19,684	3.3	1.5
Men	00-19	271	10.4	0.0	\$3,343	2.7	1.5
Men	20-24	342	13.1	0.0	\$11,878	3.0	1.6
Men	25-34	601	23.0	0.0	\$27,367	3.4	1.4
Men	35-44	504	19.3	0.0	\$37,773	3.6	1.3
Men	45-54	574	22.0	0.0	\$44,799	3.6	1.2
Men	55-64	260	10.0	0.0	\$40,369	3.6	1.2
Men	65-Up	59	2.3	0.0	\$27,952	3.2	1.3
Men	N/A	1	0.0	0.0	\$4,800	1.0	1.0
Men	Total	2,612	100.0	48.7	\$29,984	3.4	1.4
N/A	N/A	396	100.0	0.0	\$10,504	1.7	1.1
N/A	Total	396	100.0	7.4	\$10,504	1.7	1.1
Total	00-19	525	9.8	0.0	\$2,949	2.7	1.5
Total	20-24	638	11.9	0.0	\$11,216	3.1	1.7
Total	25-34	1,145	21.3	0.0	\$23,727	3.4	1.5
Total	35-44	1,021	19.0	0.0	\$31,095	3.5	1.4
Total	45-54	1,076	20.1	0.0	\$36,832	3.6	1.3
Total	55-64	453	8.4	0.0	\$32,800	3.5	1.2
Total	65-Up	106	2.0	0.0	\$23,867	3.4	1.2
Total	N/A	399	7.4	0.0	\$10,515	1.7	1.1
Total	Total	5,363	100.0	100.0	\$24,023	3.2	1.4

Note: Persons worked any time during the year.

Industry Determination: Based on the industry of employment in which the person made the most money in the year.

N/A: Represents persons with demographic data that are unavailable.

N/A = Nonresidents, individuals for whom demographic data are not available.

Source: Demographics of Persons Working in Wyoming by County, Industry, Age, & Gender, 2000-2017.

Research & Planning, Wyoming Department of Workforce Services.

Prepared by M. Moore, Research & Planning, WY DWS, 6/12/18.

Average Earnings by Age and Gender in the 51 - Information Industry in 2003

Gender	Age Group	Number	Age Percent	Gender Percent	Average Annual Wage	Average Quarters Worked	Average Annual Employers
Women	00-19	251	11.0	0.0	\$2,962	2.8	1.6
Women	20-24	293	12.9	0.0	\$11,476	3.1	1.7
Women	25-34	520	22.8	0.0	\$20,578	3.4	1.5
Women	35-44	490	21.5	0.0	\$26,216	3.6	1.4
Women	45-54	476	20.9	0.0	\$30,841	3.6	1.3
Women	55-64	200	8.8	0.0	\$23,995	3.6	1.2
Women	65-Up	45	2.0	0.0	\$19,700	3.4	1.1
Women	N/A	1	0.0	0.0	\$23,142	4.0	1.0
Women	Total	2,276	100.0	42.9	\$21,108	3.4	1.4
Men	00-19	282	10.5	0.0	\$3,185	2.9	1.5
Men	20-24	354	13.2	0.0	\$11,685	3.1	1.6
Men	25-34	622	23.2	0.0	\$28,071	3.4	1.4
Men	35-44	514	19.2	0.0	\$37,692	3.5	1.4
Men	45-54	552	20.6	0.0	\$45,857	3.7	1.2
Men	55-64	290	10.8	0.0	\$41,996	3.6	1.2
Men	65-Up	61	2.3	0.0	\$21,137	3.2	1.1
Men	N/A	1	0.0	0.0	\$22,549	4.0	1.0
Men	Total	2,676	100.0	50.5	\$30,147	3.4	1.4
N/A	N/A	351	100.0	0.0	\$8,710	1.7	1.1
N/A	Total	351	100.0	6.6	\$8,710	1.7	1.1
Total	00-19	533	10.1	0.0	\$3,080	2.8	1.6
Total	20-24	647	12.2	0.0	\$11,590	3.1	1.7
Total	25-34	1,142	21.5	0.0	\$24,659	3.4	1.4
Total	35-44	1,004	18.9	0.0	\$32,091	3.6	1.4
Total	45-54	1,028	19.4	0.0	\$38,904	3.6	1.2
Total	55-64	490	9.2	0.0	\$34,649	3.6	1.2
Total	65-Up	106	2.0	0.0	\$20,527	3.3	1.1
Total	N/A	353	6.7	0.0	\$8,790	1.7	1.1
Total	Total	5,303	100.0	100.0	\$24,848	3.3	1.4

Note: Persons worked any time during the year.

Industry Determination: Based on the industry of employment in which the person made the most money in the year.

N/A: Represents persons with demographic data that are unavailable.

N/A = Nonresidents, individuals for whom demographic data are not available.

Source: Demographics of Persons Working in Wyoming by County, Industry, Age, & Gender, 2000-2017.

Research & Planning, Wyoming Department of Workforce Services.

Prepared by M. Moore, Research & Planning, WY DWS, 6/12/18.

Average Earnings by Age and Gender in the 51 - Information Industry in 2004

Gender	Age Group	Number	Age Percent	Gender Percent	Average Annual Wage	Average Quarters Worked	Average Annual Employers
Women	00-19	244	10.7	0.0	\$2,927	2.8	1.6
Women	20-24	291	12.8	0.0	\$10,684	3.1	1.7
Women	25-34	527	23.2	0.0	\$19,293	3.3	1.6
Women	35-44	478	21.0	0.0	\$24,905	3.5	1.4
Women	45-54	478	21.0	0.0	\$29,960	3.5	1.3
Women	55-64	212	9.3	0.0	\$24,261	3.4	1.2
Women	65-Up	43	1.9	0.0	\$19,361	3.6	1.2
Women	N/A	1	0.0	0.0	\$24,630	4.0	1.0
Women	Total	2,274	100.0	43.4	\$20,324	3.3	1.5
Men	00-19	283	10.5	0.0	\$3,486	2.9	1.5
Men	20-24	337	12.4	0.0	\$12,640	3.1	1.7
Men	25-34	627	23.2	0.0	\$27,147	3.4	1.4
Men	35-44	527	19.5	0.0	\$38,585	3.6	1.3
Men	45-54	570	21.0	0.0	\$48,049	3.5	1.2
Men	55-64	299	11.0	0.0	\$44,738	3.6	1.2
Men	65-Up	64	2.4	0.0	\$27,481	3.2	1.1
Men	N/A	1	0.0	0.0	\$6,208	2.0	1.0
Men	Total	2,708	100.0	51.7	\$31,437	3.4	1.3
N/A	N/A	255	100.0	0.0	\$10,629	2.0	1.1
N/A	Total	255	100.0	4.9	\$10,629	2.0	1.1
Total	00-19	527	10.1	0.0	\$3,227	2.9	1.5
Total	20-24	628	12.0	0.0	\$11,734	3.1	1.7
Total	25-34	1,154	22.0	0.0	\$23,560	3.4	1.5
Total	35-44	1,005	19.2	0.0	\$32,079	3.5	1.3
Total	45-54	1,048	20.0	0.0	\$39,798	3.5	1.2
Total	55-64	511	9.8	0.0	\$36,243	3.5	1.2
Total	65-Up	107	2.0	0.0	\$24,218	3.4	1.2
Total	N/A	257	4.9	0.0	\$10,666	2.0	1.1
Total	Total	5,237	100.0	100.0	\$25,598	3.3	1.4

Note: Persons worked any time during the year.

Industry Determination: Based on the industry of employment in which the person made the most money in the year.

N/A: Represents persons with demographic data that are unavailable.

N/A = Nonresidents, individuals for whom demographic data are not available.

Source: Demographics of Persons Working in Wyoming by County, Industry, Age, & Gender, 2000-2017.
Research & Planning, Wyoming Department of Workforce Services.

Prepared by M. Moore, Research & Planning, WY DWS, 6/12/18.

Average Earnings by Age and Gender in the 51 - Information Industry in 2005

Gender	Age Group	Number	Age Percent	Gender Percent	Average Annual Wage	Average Quarters Worked	Average Annual Employers
Women	00-19	229	10.4	0.0	\$3,429	2.9	1.5
Women	20-24	272	12.3	0.0	\$9,827	3.0	1.7
Women	25-34	555	25.1	0.0	\$19,432	3.3	1.5
Women	35-44	450	20.4	0.0	\$23,781	3.5	1.5
Women	45-54	456	20.7	0.0	\$29,487	3.6	1.3
Women	55-64	200	9.1	0.0	\$24,126	3.5	1.2
Women	65-Up	45	2.0	0.0	\$15,258	3.5	1.1
Women	N/A	1	0.0	0.0	\$24,693	4.0	1.0
Women	Total	2,208	100.0	43.1	\$19,895	3.4	1.4
Men	00-19	319	11.9	0.0	\$3,391	2.9	1.6
Men	20-24	305	11.4	0.0	\$12,331	3.1	1.7
Men	25-34	607	22.7	0.0	\$28,541	3.4	1.4
Men	35-44	528	19.7	0.0	\$39,685	3.5	1.3
Men	45-54	545	20.4	0.0	\$47,693	3.6	1.2
Men	55-64	308	11.5	0.0	\$44,988	3.6	1.1
Men	65-Up	63	2.4	0.0	\$21,794	3.2	1.3
Men	N/A	1	0.0	0.0	\$35,323	4.0	3.0
Men	Total	2,676	100.0	52.2	\$31,531	3.4	1.4
N/A	N/A	240	100.0	0.0	\$11,627	2.1	1.1
N/A	Total	240	100.0	4.7	\$11,627	2.1	1.1
Total	00-19	548	10.7	0.0	\$3,407	2.9	1.5
Total	20-24	577	11.3	0.0	\$11,151	3.1	1.7
Total	25-34	1,162	22.7	0.0	\$24,190	3.4	1.4
Total	35-44	978	19.1	0.0	\$32,367	3.5	1.4
Total	45-54	1,001	19.5	0.0	\$39,400	3.6	1.2
Total	55-64	508	9.9	0.0	\$36,775	3.6	1.1
Total	65-Up	108	2.1	0.0	\$19,071	3.3	1.2
Total	N/A	242	4.7	0.0	\$11,779	2.1	1.1
Total	Total	5,124	100.0	100.0	\$25,585	3.3	1.4

Note: Persons worked any time during the year.

Industry Determination: Based on the industry of employment in which the person made the most money in the year.

N/A: Represents persons with demographic data that are unavailable.

N/A = Nonresidents, individuals for whom demographic data are not available.

Source: Demographics of Persons Working in Wyoming by County, Industry, Age, & Gender, 2000-2017.
Research & Planning, Wyoming Department of Workforce Services.

Prepared by M. Moore, Research & Planning, WY DWS, 6/12/18.

Average Earnings by Age and Gender in the 51 - Information Industry in 2006

Gender	Age Group	Number	Age Percent	Gender Percent	Average Annual Wage	Average Quarters Worked	Average Annual Employers
Women	00-19	250	11.6	0.0	\$4,078	2.9	1.6
Women	20-24	229	10.6	0.0	\$12,691	3.1	1.7
Women	25-34	557	25.9	0.0	\$20,678	3.4	1.6
Women	35-44	401	18.6	0.0	\$26,579	3.5	1.4
Women	45-54	445	20.7	0.0	\$29,640	3.6	1.3
Women	55-64	216	10.0	0.0	\$29,326	3.6	1.2
Women	65-Up	55	2.6	0.0	\$12,779	3.3	1.2
Women	N/A	1	0.0	0.0	\$26,102	4.0	1.0
Women	Total	2,154	100.0	43.8	\$21,520	3.4	1.5
Men	00-19	254	10.2	0.0	\$3,912	2.8	1.5
Men	20-24	259	10.4	0.0	\$14,836	3.2	1.5
Men	25-34	584	23.4	0.0	\$30,496	3.4	1.4
Men	35-44	505	20.2	0.0	\$46,869	3.6	1.2
Men	45-54	518	20.7	0.0	\$52,409	3.7	1.1
Men	55-64	312	12.5	0.0	\$50,147	3.7	1.1
Men	65-Up	65	2.6	0.0	\$24,264	3.4	1.3
Men	N/A	2	0.1	0.0	\$30,793	2.5	2.0
Men	Total	2,499	100.0	50.9	\$36,313	3.5	1.3
N/A	N/A	260	100.0	0.0	\$11,884	2.1	1.1
N/A	Total	260	100.0	5.3	\$11,884	2.1	1.1
Total	00-19	504	10.3	0.0	\$3,994	2.9	1.6
Total	20-24	488	9.9	0.0	\$13,829	3.2	1.6
Total	25-34	1,141	23.2	0.0	\$25,703	3.4	1.5
Total	35-44	906	18.4	0.0	\$37,889	3.5	1.3
Total	45-54	963	19.6	0.0	\$41,887	3.6	1.2
Total	55-64	528	10.7	0.0	\$41,629	3.7	1.2
Total	65-Up	120	2.4	0.0	\$19,000	3.4	1.2
Total	N/A	263	5.4	0.0	\$12,081	2.1	1.1
Total	Total	4,913	100.0	100.0	\$28,535	3.4	1.4

Note: Persons worked any time during the year.

Industry Determination: Based on the industry of employment in which the person made the most money in the year.

N/A: Represents persons with demographic data that are unavailable.

N/A = Nonresidents, individuals for whom demographic data are not available.

Source: Demographics of Persons Working in Wyoming by County, Industry, Age, & Gender, 2000-2017.
Research & Planning, Wyoming Department of Workforce Services.

Prepared by M. Moore, Research & Planning, WY DWS, 6/12/18.

Average Earnings by Age and Gender in the 51 - Information Industry in 2007

Gender	Age Group	Number	Age Percent	Gender Percent	Average Annual Wage	Average Quarters Worked	Average Annual Employers
Women	00-19	229	11.4	0.0	\$3,554	3.0	1.6
Women	20-24	196	9.8	0.0	\$14,495	3.1	1.7
Women	25-34	504	25.1	0.0	\$22,807	3.4	1.5
Women	35-44	356	17.8	0.0	\$29,929	3.6	1.3
Women	45-54	414	20.6	0.0	\$33,562	3.7	1.3
Women	55-64	236	11.8	0.0	\$31,294	3.6	1.3
Women	65-Up	68	3.4	0.0	\$16,958	3.3	1.2
Women	N/A	2	0.1	0.0	\$13,546	2.5	1.0
Women	Total	2,005	100.0	42.1	\$24,072	3.4	1.4
Men	00-19	237	9.4	0.0	\$3,662	2.8	1.6
Men	20-24	267	10.5	0.0	\$16,559	3.1	1.5
Men	25-34	586	23.1	0.0	\$31,804	3.4	1.4
Men	35-44	514	20.3	0.0	\$47,674	3.7	1.3
Men	45-54	520	20.5	0.0	\$51,624	3.6	1.2
Men	55-64	334	13.2	0.0	\$52,512	3.7	1.2
Men	65-Up	73	2.9	0.0	\$26,301	3.2	1.2
Men	N/A	1	0.0	0.0	\$35,210	4.0	2.0
Men	Total	2,532	100.0	53.2	\$37,429	3.4	1.3
N/A	N/A	220	100.0	0.0	\$13,245	2.1	1.1
N/A	Total	220	100.0	4.6	\$13,245	2.1	1.1
Total	00-19	466	9.8	0.0	\$3,609	2.9	1.6
Total	20-24	463	9.7	0.0	\$15,685	3.1	1.6
Total	25-34	1,090	22.9	0.0	\$27,644	3.4	1.4
Total	35-44	870	18.3	0.0	\$40,413	3.6	1.3
Total	45-54	934	19.6	0.0	\$43,618	3.6	1.3
Total	55-64	570	12.0	0.0	\$43,727	3.7	1.2
Total	65-Up	141	3.0	0.0	\$21,795	3.2	1.2
Total	N/A	223	4.7	0.0	\$13,347	2.1	1.1
Total	Total	4,757	100.0	100.0	\$30,681	3.4	1.4

Note: Persons worked any time during the year.

Industry Determination: Based on the industry of employment in which the person made the most money in the year.

N/A: Represents persons with demographic data that are unavailable.

N/A = Nonresidents, individuals for whom demographic data are not available.

Source: Demographics of Persons Working in Wyoming by County, Industry, Age, & Gender, 2000-2017.

Research & Planning, Wyoming Department of Workforce Services.

Prepared by M. Moore, Research & Planning, WY DWS, 6/12/18.

Average Earnings by Age and Gender in the 51 - Information Industry in 2008

Gender	Age Group	Number	Age Percent	Gender Percent	Average Annual Wage	Average Quarters Worked	Average Annual Employers
Women	00-19	204	10.5	0.0	\$3,673	2.8	1.5
Women	20-24	208	10.7	0.0	\$13,887	3.1	1.6
Women	25-34	477	24.5	0.0	\$23,376	3.5	1.5
Women	35-44	349	17.9	0.0	\$30,810	3.5	1.4
Women	45-54	397	20.4	0.0	\$32,391	3.6	1.3
Women	55-64	232	11.9	0.0	\$29,444	3.5	1.3
Women	65-Up	79	4.1	0.0	\$15,596	3.5	1.2
Women	N/A	3	0.2	0.0	\$10,014	2.3	1.0
Women	Total	1,949	100.0	42.1	\$23,855	3.4	1.4
Men	00-19	244	9.8	0.0	\$3,727	2.9	1.4
Men	20-24	225	9.1	0.0	\$18,542	3.2	1.5
Men	25-34	633	25.5	0.0	\$31,666	3.4	1.4
Men	35-44	509	20.5	0.0	\$46,204	3.5	1.4
Men	45-54	473	19.1	0.0	\$51,530	3.6	1.3
Men	55-64	321	12.9	0.0	\$48,943	3.4	1.2
Men	65-Up	74	3.0	0.0	\$24,425	3.4	1.1
Men	N/A	1	0.0	0.0	\$48,600	4.0	2.0
Men	Total	2,480	100.0	53.6	\$36,526	3.4	1.4
N/A	N/A	196	100.0	0.0	\$13,890	2.1	1.1
N/A	Total	196	100.0	4.2	\$13,890	2.1	1.1
Total	00-19	448	9.7	0.0	\$3,703	2.8	1.4
Total	20-24	433	9.4	0.0	\$16,306	3.2	1.6
Total	25-34	1,110	24.0	0.0	\$28,104	3.4	1.5
Total	35-44	858	18.6	0.0	\$39,942	3.5	1.4
Total	45-54	870	18.8	0.0	\$42,797	3.6	1.3
Total	55-64	553	12.0	0.0	\$40,762	3.5	1.2
Total	65-Up	153	3.3	0.0	\$19,866	3.4	1.2
Total	N/A	200	4.3	0.0	\$14,005	2.1	1.1
Total	Total	4,625	100.0	100.0	\$30,227	3.3	1.4

Note: Persons worked any time during the year.

Industry Determination: Based on the industry of employment in which the person made the most money in the year.

N/A: Represents persons with demographic data that are unavailable.

N/A = Nonresidents, individuals for whom demographic data are not available.

Source: Demographics of Persons Working in Wyoming by County, Industry, Age, & Gender, 2000-2017.

Research & Planning, Wyoming Department of Workforce Services.

Prepared by M. Moore, Research & Planning, WY DWS, 6/12/18.

Average Earnings by Age and Gender in the 51 - Information Industry in 2009

Gender	Age Group	Number	Age Percent	Gender Percent	Average Annual Wage	Average Quarters Worked	Average Annual Employers
Women	00-19	168	9.1	0.0	\$3,408	2.9	1.3
Women	20-24	194	10.5	0.0	\$14,691	3.1	1.4
Women	25-34	431	23.4	0.0	\$23,325	3.5	1.4
Women	35-44	340	18.5	0.0	\$30,942	3.6	1.3
Women	45-54	400	21.8	0.0	\$31,236	3.6	1.2
Women	55-64	224	12.2	0.0	\$31,043	3.6	1.2
Women	65-Up	81	4.4	0.0	\$17,424	3.8	1.2
Women	N/A	1	0.1	0.0	\$30,102	4.0	1.0
Women	Total	1,839	100.0	41.1	\$24,408	3.5	1.3
Men	00-19	220	9.0	0.0	\$3,809	2.9	1.3
Men	20-24	208	8.5	0.0	\$18,140	3.2	1.4
Men	25-34	613	25.0	0.0	\$32,552	3.5	1.2
Men	35-44	527	21.5	0.0	\$46,162	3.5	1.2
Men	45-54	465	19.0	0.0	\$51,733	3.6	1.2
Men	55-64	335	13.7	0.0	\$46,485	3.4	1.1
Men	65-Up	81	3.3	0.0	\$27,457	3.4	1.1
Men	N/A	2	0.1	0.0	\$41,050	4.0	1.5
Men	Total	2,451	100.0	54.8	\$37,057	3.4	1.2
N/A	N/A	186	100.0	0.0	\$15,156	2.4	1.1
N/A	Total	186	100.0	4.2	\$15,156	2.4	1.1
Total	00-19	388	8.7	0.0	\$3,636	2.9	1.3
Total	20-24	402	9.0	0.0	\$16,476	3.2	1.4
Total	25-34	1,044	23.3	0.0	\$28,743	3.5	1.3
Total	35-44	867	19.4	0.0	\$40,193	3.6	1.2
Total	45-54	865	19.3	0.0	\$42,255	3.6	1.2
Total	55-64	559	12.5	0.0	\$40,298	3.5	1.1
Total	65-Up	162	3.6	0.0	\$22,440	3.6	1.1
Total	N/A	189	4.2	0.0	\$15,509	2.4	1.1
Total	Total	4,476	100.0	100.0	\$30,950	3.4	1.2

Note: Persons worked any time during the year.

Industry Determination: Based on the industry of employment in which the person made the most money in the year.

N/A: Represents persons with demographic data that are unavailable.

N/A = Nonresidents, individuals for whom demographic data are not available.

Source: Demographics of Persons Working in Wyoming by County, Industry, Age, & Gender, 2000-2017.
Research & Planning, Wyoming Department of Workforce Services.

Prepared by M. Moore, Research & Planning, WY DWS, 6/12/18.

Average Earnings by Age and Gender in the 51 - Information Industry in 2010

Gender	Age Group	Number	Age Percent	Gender Percent	Average Annual Wage	Average Quarters Worked	Average Annual Employers
Women	00-19	177	9.6	0.0	\$3,394	3.0	1.4
Women	20-24	201	10.9	0.0	\$13,742	3.1	1.4
Women	25-34	408	22.1	0.0	\$24,497	3.5	1.4
Women	35-44	344	18.7	0.0	\$32,045	3.7	1.3
Women	45-54	389	21.1	0.0	\$34,510	3.7	1.2
Women	55-64	244	13.2	0.0	\$32,845	3.6	1.2
Women	65-Up	80	4.3	0.0	\$16,743	3.6	1.2
Women	N/A	1	0.1	0.0	\$29,172	4.0	1.0
Women	Total	1,844	100.0	41.2	\$25,590	3.5	1.3
Men	00-19	177	7.2	0.0	\$4,100	3.0	1.3
Men	20-24	192	7.8	0.0	\$15,358	3.2	1.4
Men	25-34	615	25.1	0.0	\$32,304	3.5	1.3
Men	35-44	517	21.1	0.0	\$51,376	3.7	1.2
Men	45-54	483	19.7	0.0	\$56,552	3.7	1.1
Men	55-64	366	14.9	0.0	\$52,414	3.7	1.1
Men	65-Up	101	4.1	0.0	\$31,742	3.3	1.1
Men	N/A	1	0.0	0.0	\$35,000	4.0	1.0
Men	Total	2,452	100.0	54.7	\$40,719	3.5	1.2
N/A	N/A	183	100.0	0.0	\$19,521	2.6	1.1
N/A	Total	183	100.0	4.1	\$19,521	2.6	1.1
Total	00-19	354	7.9	0.0	\$3,747	3.0	1.4
Total	20-24	393	8.8	0.0	\$14,531	3.1	1.4
Total	25-34	1,023	22.8	0.0	\$29,191	3.5	1.3
Total	35-44	861	19.2	0.0	\$43,653	3.7	1.2
Total	45-54	872	19.5	0.0	\$46,719	3.7	1.2
Total	55-64	610	13.6	0.0	\$44,586	3.7	1.2
Total	65-Up	181	4.0	0.0	\$25,113	3.4	1.1
Total	N/A	185	4.1	0.0	\$19,657	2.6	1.1
Total	Total	4,479	100.0	100.0	\$33,624	3.5	1.2

Note: Persons worked any time during the year.

Industry Determination: Based on the industry of employment in which the person made the most money in the year.

N/A: Represents persons with demographic data that are unavailable.

N/A = Nonresidents, individuals for whom demographic data are not available.

Source: Demographics of Persons Working in Wyoming by County, Industry, Age, & Gender, 2000-2017.
Research & Planning, Wyoming Department of Workforce Services.

Prepared by M. Moore, Research & Planning, WY DWS, 6/12/18.

Average Earnings by Age and Gender in the 51 - Information Industry in 2011

Gender	Age Group	Number	Age Percent	Gender Percent	Average Annual Wage	Average Quarters Worked	Average Annual Employers
Women	00-19	139	7.8	0.0	\$2,945	2.8	1.4
Women	20-24	178	10.0	0.0	\$13,709	3.2	1.6
Women	25-34	416	23.3	0.0	\$23,738	3.4	1.5
Women	35-44	357	20.0	0.0	\$33,179	3.6	1.4
Women	45-54	371	20.8	0.0	\$34,635	3.7	1.3
Women	55-64	239	13.4	0.0	\$36,775	3.7	1.2
Women	65-Up	82	4.6	0.0	\$18,776	3.5	1.1
Women	N/A	2	0.1	0.0	\$17,135	3.0	1.0
Women	Total	1,784	100.0	40.6	\$26,784	3.5	1.4
Men	00-19	147	6.1	0.0	\$3,784	2.9	1.3
Men	20-24	199	8.2	0.0	\$14,155	3.1	1.4
Men	25-34	588	24.3	0.0	\$32,661	3.5	1.3
Men	35-44	522	21.6	0.0	\$49,931	3.6	1.2
Men	45-54	487	20.1	0.0	\$58,860	3.7	1.2
Men	55-64	381	15.7	0.0	\$56,103	3.7	1.1
Men	65-Up	96	4.0	0.0	\$38,260	3.6	1.2
Men	Total	2,420	100.0	55.1	\$42,295	3.5	1.2
N/A	N/A	188	100.0	0.0	\$19,565	2.4	1.1
N/A	Total	188	100.0	4.3	\$19,565	2.4	1.1
Total	00-19	286	6.5	0.0	\$3,376	2.8	1.4
Total	20-24	377	8.6	0.0	\$13,944	3.1	1.5
Total	25-34	1,004	22.9	0.0	\$28,964	3.5	1.4
Total	35-44	879	20.0	0.0	\$43,127	3.6	1.3
Total	45-54	858	19.5	0.0	\$48,385	3.7	1.2
Total	55-64	620	14.1	0.0	\$48,652	3.7	1.2
Total	65-Up	178	4.1	0.0	\$29,284	3.5	1.1
Total	N/A	190	4.3	0.0	\$19,540	2.4	1.1
Total	Total	4,392	100.0	100.0	\$35,022	3.5	1.3

Note: Persons worked any time during the year.

Industry Determination: Based on the industry of employment in which the person made the most money in the year.

N/A: Represents persons with demographic data that are unavailable.

N/A = Nonresidents, individuals for whom demographic data are not available.

Source: Demographics of Persons Working in Wyoming by County, Industry, Age, & Gender, 2000-2017.

Research & Planning, Wyoming Department of Workforce Services.

Prepared by M. Moore, Research & Planning, WY DWS, 6/12/18.

Average Earnings by Age and Gender in the 51 - Information Industry in 2012

Gender	Age Group	Number	Age Percent	Gender Percent	Average Annual Wage	Average Quarters Worked	Average Annual Employers
Women	00-19	156	9.0	0.0	\$3,259	2.8	1.5
Women	20-24	172	9.9	0.0	\$13,540	3.3	1.5
Women	25-34	383	22.0	0.0	\$24,756	3.5	1.4
Women	35-44	342	19.7	0.0	\$33,578	3.6	1.3
Women	45-54	336	19.3	0.0	\$36,312	3.7	1.2
Women	55-64	262	15.1	0.0	\$34,877	3.6	1.2
Women	65-Up	87	5.0	0.0	\$20,285	3.6	1.1
Women	N/A	2	0.1	0.0	\$18,718	4.0	1.0
Women	Total	1,740	100.0	39.0	\$26,979	3.5	1.3
Men	00-19	169	6.8	0.0	\$3,554	2.7	1.5
Men	20-24	189	7.6	0.0	\$15,563	3.2	1.5
Men	25-34	619	24.9	0.0	\$33,349	3.5	1.3
Men	35-44	526	21.1	0.0	\$52,792	3.6	1.2
Men	45-54	500	20.1	0.0	\$58,644	3.6	1.1
Men	55-64	378	15.2	0.0	\$54,642	3.6	1.1
Men	65-Up	109	4.4	0.0	\$41,440	3.4	1.1
Men	Total	2,490	100.0	55.9	\$42,750	3.5	1.2
N/A	N/A	227	100.0	0.0	\$19,092	2.5	1.1
N/A	Total	227	100.0	5.1	\$19,092	2.5	1.1
Total	00-19	325	7.3	0.0	\$3,412	2.8	1.5
Total	20-24	361	8.1	0.0	\$14,599	3.2	1.5
Total	25-34	1,002	22.5	0.0	\$30,065	3.5	1.3
Total	35-44	868	19.5	0.0	\$45,222	3.6	1.2
Total	45-54	836	18.8	0.0	\$49,668	3.6	1.2
Total	55-64	640	14.4	0.0	\$46,551	3.6	1.1
Total	65-Up	196	4.4	0.0	\$32,050	3.5	1.1
Total	N/A	229	5.1	0.0	\$19,088	2.5	1.1
Total	Total	4,457	100.0	100.0	\$35,388	3.4	1.3

Note: Persons worked any time during the year.

Industry Determination: Based on the industry of employment in which the person made the most money in the year.

N/A: Represents persons with demographic data that are unavailable.

N/A = Nonresidents, individuals for whom demographic data are not available.

Source: Demographics of Persons Working in Wyoming by County, Industry, Age, & Gender, 2000-2017.

Research & Planning, Wyoming Department of Workforce Services.

Prepared by M. Moore, Research & Planning, WY DWS, 6/12/18.

Average Earnings by Age and Gender in the 51 - Information Industry in 2013

Gender	Age Group	Number	Age Percent	Gender Percent	Average Annual Wage	Average Quarters Worked	Average Annual Employers
Women	00-19	158	9.3	0.0	\$3,198	2.7	1.5
Women	20-24	150	8.9	0.0	\$12,856	3.2	1.6
Women	25-34	377	22.3	0.0	\$24,848	3.5	1.4
Women	35-44	311	18.4	0.0	\$36,531	3.6	1.3
Women	45-54	330	19.5	0.0	\$38,139	3.7	1.3
Women	55-64	266	15.7	0.0	\$37,891	3.7	1.2
Women	65-Up	97	5.7	0.0	\$20,050	3.5	1.2
Women	N/A	2	0.1	0.0	\$19,618	4.0	1.0
Women	Total	1,691	100.0	39.1	\$28,274	3.5	1.3
Men	00-19	165	6.8	0.0	\$3,944	2.8	1.4
Men	20-24	168	6.9	0.0	\$16,153	3.2	1.7
Men	25-34	569	23.4	0.0	\$34,810	3.5	1.3
Men	35-44	564	23.2	0.0	\$51,513	3.6	1.2
Men	45-54	466	19.2	0.0	\$63,600	3.7	1.2
Men	55-64	392	16.1	0.0	\$57,982	3.7	1.1
Men	65-Up	108	4.4	0.0	\$46,602	3.5	1.2
Men	Total	2,432	100.0	56.3	\$45,076	3.5	1.2
N/A	N/A	197	100.0	0.0	\$17,690	2.5	1.1
N/A	Total	197	100.0	4.6	\$17,690	2.5	1.1
Total	00-19	323	7.5	0.0	\$3,580	2.8	1.4
Total	20-24	318	7.4	0.0	\$14,598	3.2	1.6
Total	25-34	946	21.9	0.0	\$30,840	3.5	1.3
Total	35-44	875	20.3	0.0	\$46,188	3.6	1.3
Total	45-54	796	18.4	0.0	\$53,045	3.7	1.2
Total	55-64	658	15.2	0.0	\$49,860	3.7	1.1
Total	65-Up	205	4.7	0.0	\$34,039	3.5	1.2
Total	N/A	199	4.6	0.0	\$17,709	2.5	1.1
Total	Total	4,320	100.0	100.0	\$37,250	3.5	1.3

Note: Persons worked any time during the year.

Industry Determination: Based on the industry of employment in which the person made the most money in the year.

N/A: Represents persons with demographic data that are unavailable.

N/A = Nonresidents, individuals for whom demographic data are not available.

Source: Demographics of Persons Working in Wyoming by County, Industry, Age, & Gender, 2000-2017.

Research & Planning, Wyoming Department of Workforce Services.

Prepared by M. Moore, Research & Planning, WY DWS, 6/12/18.

Average Earnings by Age and Gender in the 51 - Information Industry in 2014

Gender	Age Group	Number	Age Percent	Gender Percent	Average Annual Wage	Average Quarters Worked	Average Annual Employers
Women	00-19	163	9.6	0.0	\$3,810	2.9	1.5
Women	20-24	137	8.1	0.0	\$12,912	3.1	1.6
Women	25-34	405	23.9	0.0	\$24,863	3.4	1.4
Women	35-44	296	17.5	0.0	\$36,980	3.6	1.4
Women	45-54	319	18.8	0.0	\$38,847	3.7	1.2
Women	55-64	279	16.5	0.0	\$40,153	3.6	1.2
Women	65-Up	94	5.5	0.0	\$22,258	3.7	1.1
Women	N/A	2	0.1	0.0	\$19,257	4.0	1.0
Women	Total	1,695	100.0	38.4	\$28,986	3.5	1.3
Men	00-19	145	5.8	0.0	\$3,943	2.7	1.4
Men	20-24	182	7.3	0.0	\$16,025	3.2	1.6
Men	25-34	582	23.2	0.0	\$36,505	3.6	1.3
Men	35-44	573	22.9	0.0	\$51,325	3.6	1.2
Men	45-54	498	19.9	0.0	\$61,906	3.7	1.1
Men	55-64	403	16.1	0.0	\$59,123	3.7	1.1
Men	65-Up	123	4.9	0.0	\$42,197	3.4	1.2
Men	Total	2,506	100.0	56.8	\$45,486	3.5	1.2
N/A	N/A	208	100.0	0.0	\$16,596	2.4	1.1
N/A	Total	208	100.0	4.7	\$16,596	2.4	1.1
Total	00-19	308	7.0	0.0	\$3,873	2.8	1.5
Total	20-24	319	7.2	0.0	\$14,688	3.2	1.6
Total	25-34	987	22.4	0.0	\$31,728	3.5	1.4
Total	35-44	869	19.7	0.0	\$46,439	3.6	1.3
Total	45-54	817	18.5	0.0	\$52,903	3.7	1.2
Total	55-64	682	15.5	0.0	\$51,363	3.6	1.2
Total	65-Up	217	4.9	0.0	\$33,560	3.5	1.2
Total	N/A	210	4.8	0.0	\$16,621	2.5	1.1
Total	Total	4,409	100.0	100.0	\$37,780	3.5	1.3

Note: Persons worked any time during the year.

Industry Determination: Based on the industry of employment in which the person made the most money in the year.

N/A: Represents persons with demographic data that are unavailable.

N/A = Nonresidents, individuals for whom demographic data are not available.

Source: Demographics of Persons Working in Wyoming by County, Industry, Age, & Gender, 2000-2017.

Research & Planning, Wyoming Department of Workforce Services.

Prepared by M. Moore, Research & Planning, WY DWS, 6/12/18.

Average Earnings by Age and Gender in the 51 - Information Industry in 2015

Gender	Age Group	Number	Age Percent	Gender Percent	Average Annual Wage	Average Quarters Worked	Average Annual Employers
Women	00-19	181	10.6	0.0	\$3,701	2.9	1.4
Women	20-24	155	9.1	0.0	\$14,740	3.2	1.7
Women	25-34	370	21.7	0.0	\$26,759	3.6	1.5
Women	35-44	303	17.8	0.0	\$37,092	3.6	1.4
Women	45-54	310	18.2	0.0	\$38,122	3.6	1.4
Women	55-64	284	16.6	0.0	\$39,496	3.6	1.2
Women	65-Up	102	6.0	0.0	\$19,637	3.5	1.2
Women	N/A	2	0.1	0.0	\$19,700	4.0	1.0
Women	Total	1,707	100.0	38.4	\$28,806	3.5	1.4
Men	00-19	170	6.8	0.0	\$4,204	2.7	1.5
Men	20-24	191	7.6	0.0	\$18,003	3.2	1.6
Men	25-34	585	23.3	0.0	\$36,433	3.5	1.4
Men	35-44	538	21.4	0.0	\$56,011	3.7	1.2
Men	45-54	503	20.0	0.0	\$64,897	3.7	1.2
Men	55-64	399	15.9	0.0	\$63,067	3.7	1.2
Men	65-Up	126	5.0	0.0	\$42,662	3.4	1.2
Men	Total	2,512	100.0	56.5	\$47,286	3.5	1.3
N/A	N/A	226	100.0	0.0	\$16,455	2.3	1.1
N/A	Total	226	100.0	5.1	\$16,455	2.3	1.1
Total	00-19	351	7.9	0.0	\$3,945	2.8	1.5
Total	20-24	346	7.8	0.0	\$16,541	3.2	1.7
Total	25-34	955	21.5	0.0	\$32,685	3.5	1.4
Total	35-44	841	18.9	0.0	\$49,195	3.7	1.3
Total	45-54	813	18.3	0.0	\$54,687	3.7	1.3
Total	55-64	683	15.4	0.0	\$53,266	3.7	1.2
Total	65-Up	228	5.1	0.0	\$32,361	3.4	1.2
Total	N/A	228	5.1	0.0	\$16,483	2.3	1.1
Total	Total	4,445	100.0	100.0	\$38,622	3.5	1.3

Note: Persons worked any time during the year.

Industry Determination: Based on the industry of employment in which the person made the most money in the year.

N/A: Represents persons with demographic data that are unavailable.

N/A = Nonresidents, individuals for whom demographic data are not available.

Source: Demographics of Persons Working in Wyoming by County, Industry, Age, & Gender, 2000-2017.

Research & Planning, Wyoming Department of Workforce Services.

Prepared by M. Moore, Research & Planning, WY DWS, 6/12/18.

Average Earnings by Age and Gender in the 51 - Information Industry in 2016

Gender	Age Group	Number	Age Percent	Gender Percent	Average Annual Wage	Average Quarters Worked	Average Annual Employers
Women	00-19	181	10.8	0.0	\$3,442	2.9	1.3
Women	20-24	142	8.5	0.0	\$14,212	3.2	1.5
Women	25-34	373	22.3	0.0	\$26,650	3.5	1.4
Women	35-44	299	17.9	0.0	\$38,388	3.7	1.3
Women	45-54	298	17.8	0.0	\$40,168	3.7	1.2
Women	55-64	277	16.6	0.0	\$39,134	3.7	1.2
Women	65-Up	99	5.9	0.0	\$23,870	3.7	1.1
Women	N/A	2	0.1	0.0	\$29,721	4.0	1.0
Women	Total	1,671	100.0	38.2	\$29,499	3.5	1.3
Men	00-19	159	6.4	0.0	\$5,090	3.0	1.4
Men	20-24	182	7.3	0.0	\$20,318	3.3	1.5
Men	25-34	602	24.1	0.0	\$35,314	3.5	1.3
Men	35-44	552	22.1	0.0	\$55,203	3.7	1.2
Men	45-54	486	19.5	0.0	\$65,633	3.7	1.2
Men	55-64	384	15.4	0.0	\$62,951	3.7	1.1
Men	65-Up	129	5.2	0.0	\$45,127	3.4	1.1
Men	Total	2,494	100.0	57.1	\$47,366	3.6	1.2
N/A	N/A	206	100.0	0.0	\$19,013	2.4	1.1
N/A	Total	206	100.0	4.7	\$19,013	2.4	1.1
Total	00-19	340	7.8	0.0	\$4,213	3.0	1.4
Total	20-24	324	7.4	0.0	\$17,642	3.3	1.5
Total	25-34	975	22.3	0.0	\$32,000	3.5	1.3
Total	35-44	851	19.5	0.0	\$49,295	3.7	1.2
Total	45-54	784	17.9	0.0	\$55,954	3.7	1.2
Total	55-64	661	15.1	0.0	\$52,970	3.7	1.2
Total	65-Up	228	5.2	0.0	\$35,897	3.6	1.1
Total	N/A	208	4.8	0.0	\$19,116	2.4	1.1
Total	Total	4,371	100.0	100.0	\$39,199	3.5	1.3

Note: Persons worked any time during the year.

Industry Determination: Based on the industry of employment in which the person made the most money in the year.

N/A: Represents persons with demographic data that are unavailable.

N/A = Nonresidents, individuals for whom demographic data are not available.

Source: Demographics of Persons Working in Wyoming by County, Industry, Age, & Gender, 2000-2017.

Research & Planning, Wyoming Department of Workforce Services.

Prepared by M. Moore, Research & Planning, WY DWS, 6/12/18.

Average Earnings by Age and Gender in the 51 - Information Industry in 2017

Gender	Age Group	Number	Age Percent	Gender Percent	Average Annual Wage	Average Quarters Worked	Average Annual Employers
Women	00-19	182	11.1	0.0	\$3,386	2.8	1.4
Women	20-24	146	8.9	0.0	\$14,580	3.2	1.6
Women	25-34	344	21.1	0.0	\$27,119	3.5	1.5
Women	35-44	304	18.6	0.0	\$38,599	3.7	1.4
Women	45-54	285	17.5	0.0	\$41,972	3.7	1.3
Women	55-64	264	16.2	0.0	\$39,014	3.7	1.3
Women	65-Up	106	6.5	0.0	\$22,901	3.6	1.1
Women	N/A	2	0.1	0.0	\$35,046	4.0	1.0
Women	Total	1,633	100.0	38.2	\$29,741	3.5	1.4
Men	00-19	165	6.9	0.0	\$4,986	2.9	1.4
Men	20-24	179	7.5	0.0	\$18,000	3.2	1.5
Men	25-34	553	23.1	0.0	\$39,406	3.6	1.4
Men	35-44	513	21.4	0.0	\$56,437	3.7	1.3
Men	45-54	462	19.3	0.0	\$71,415	3.8	1.3
Men	55-64	389	16.2	0.0	\$61,586	3.7	1.3
Men	65-Up	135	5.6	0.0	\$43,885	3.3	1.1
Men	Total	2,396	100.0	56.0	\$49,108	3.6	1.3
N/A	N/A	251	100.0	0.0	\$16,842	2.5	1.2
N/A	Total	251	100.0	5.9	\$16,842	2.5	1.2
Total	00-19	347	8.1	0.0	\$4,147	2.9	1.4
Total	20-24	325	7.6	0.0	\$16,464	3.2	1.5
Total	25-34	897	21.0	0.0	\$34,694	3.5	1.4
Total	35-44	817	19.1	0.0	\$49,800	3.7	1.3
Total	45-54	747	17.5	0.0	\$60,182	3.7	1.3
Total	55-64	653	15.3	0.0	\$52,460	3.7	1.3
Total	65-Up	241	5.6	0.0	\$34,656	3.4	1.1
Total	N/A	253	5.9	0.0	\$16,986	2.5	1.2
Total	Total	4,280	100.0	100.0	\$39,827	3.5	1.3

Note: Persons worked any time during the year.

Industry Determination: Based on the industry of employment in which the person made the most money in the year.

N/A: Represents persons with demographic data that are unavailable.

N/A = Nonresidents, individuals for whom demographic data are not available.

Source: Demographics of Persons Working in Wyoming by County, Industry, Age, & Gender, 2000-2017.

Research & Planning, Wyoming Department of Workforce Services.

Prepared by M. Moore, Research & Planning, WY DWS, 6/12/18.