

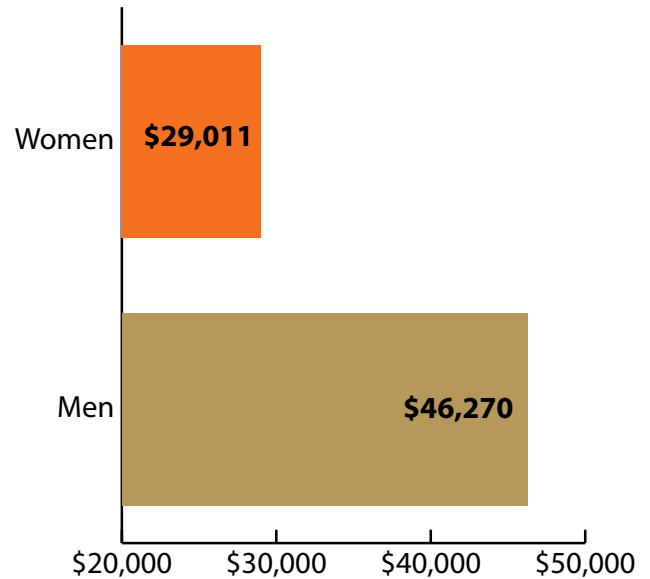
Wyoming All Industries at a Glance, 2017

Demographics of Persons Working in Wyoming by County, Industry, Age, & Gender, 2000-2017

Table: Total Number of Persons Working in Wyoming at Any Time by Gender and Age, 2016-2017

Gender	2016	2017	Change	
			N	%
Women	141,856	137,840	-4,016	-2.8
Men	165,281	158,628	-6,653	-4.0
Nonresidents	37,503	41,243	3,740	10.0
Total	344,640	337,711	-6,929	-2.0

Age	2016	2017	Change	
			N	%
00-19	19,876	19,215	-661	-3.3
20-24	32,779	30,803	-1,976	-6.0
25-34	71,185	67,116	-4,069	-5.7
35-44	60,243	59,619	-624	-1.0
45-54	53,883	51,366	-2,517	-4.7
55-64	51,275	50,038	-1,237	-2.4
65-Up	17,832	18,254	422	2.4
Nonresidents	37,567	41,300	3,733	9.9
Total	344,640	337,711	-6,929	-2.0



Women's Wages = 62.7% of Men's Wages

Figure: Average Annual Wages by Gender, 2017

Total = 337,711

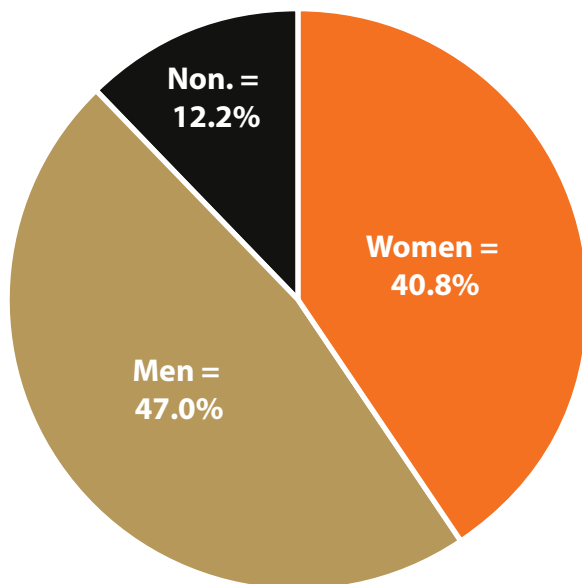


Figure: Persons Working by Gender, 2017

Total = 337,711

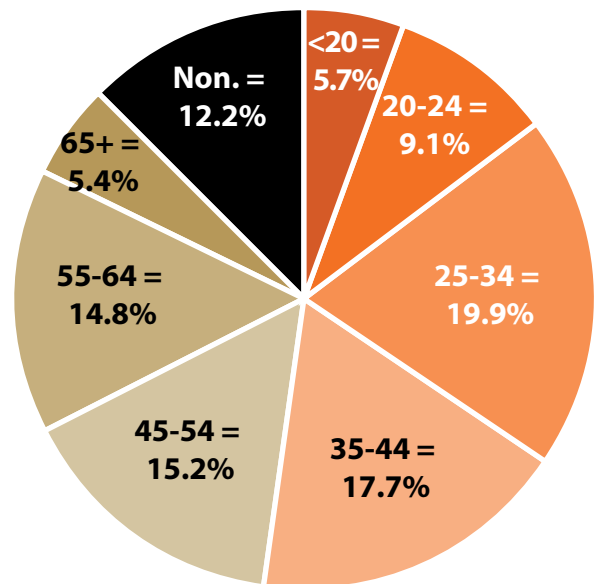


Figure: Persons Working by Age, 2017

Note: Nonresidents are individuals for whom demographic data are not available.
 Source: Demographics of Persons Working in Wyoming by County, Industry, Age, & Gender, 2000-2017. Research & Planning, Wyoming Department of Workforce Services. Prepared by M. Moore, Research & Planning, WY DWS, 6/12/18.

Persons Working in All Industries in Wyoming by Gender and Age, 2000-2017

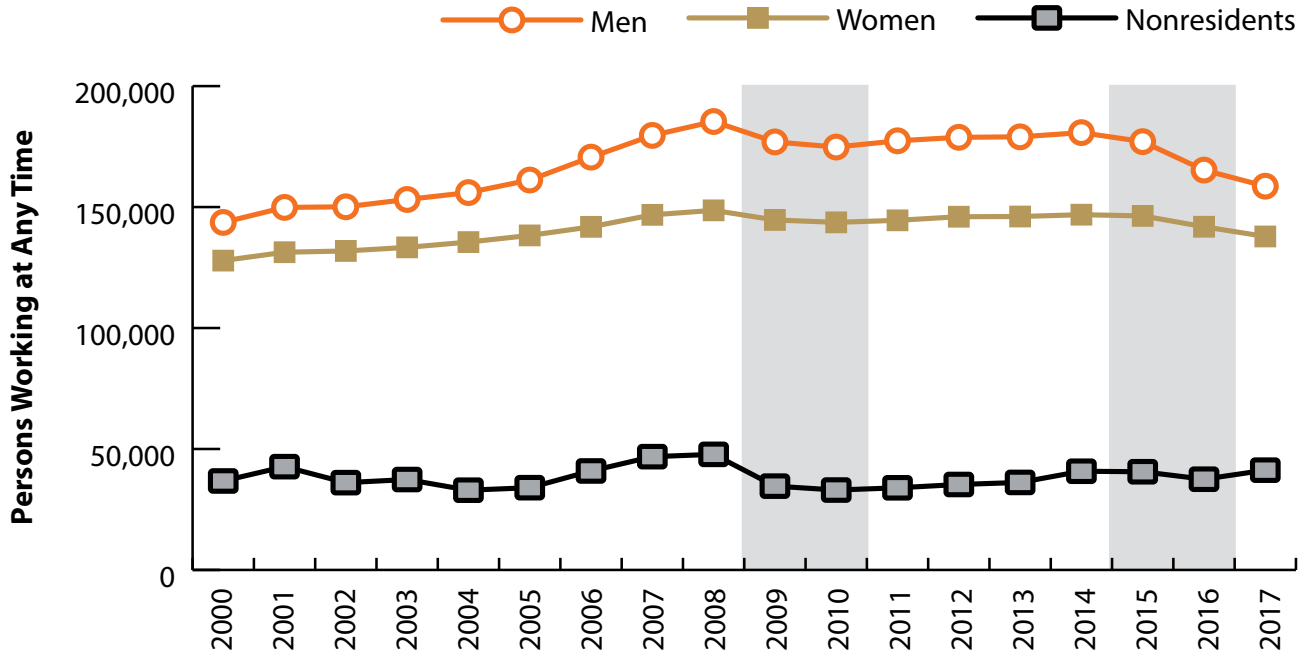


Figure: Persons Working in All Industries in Wyoming at Any Time by Gender, 2000-2017

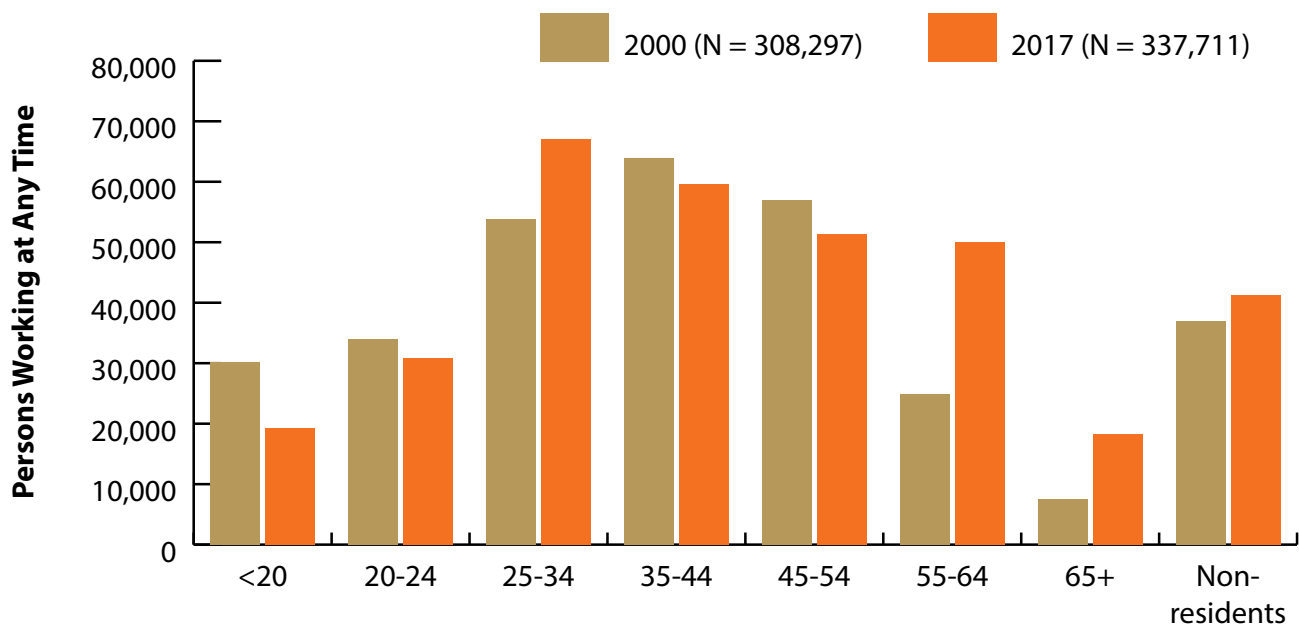


Figure: Persons Working in All Industries in Wyoming at Any Time by Age, 2000-2017

Note: Nonresidents are individuals for whom demographic data are not available.
 Shaded areas indicate periods of economic downturn: 2009Q1-2010Q1 and 2015Q2-2016Q4.
 Source: Demographics of Persons Working in Wyoming by County, Industry, Age, & Gender, 2000-2017. Research & Planning, Wyoming Department of Workforce Services. Prepared by M. Moore, Research & Planning, WY DWS, 6/12/18.

Wages for Persons Working in All Industries in Wyoming by Gender, 2000-2017

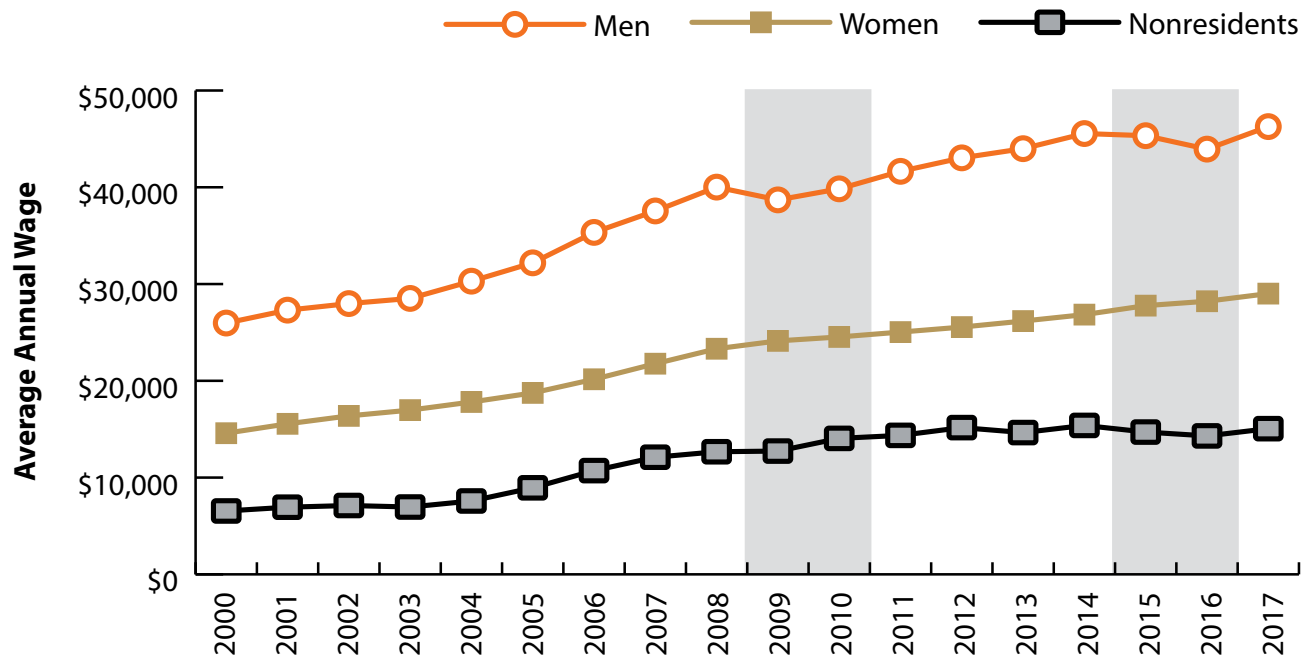


Figure: Average Annual Wage for Persons Working in All Industries in Wyoming at Any Time by Age, 2000-2017

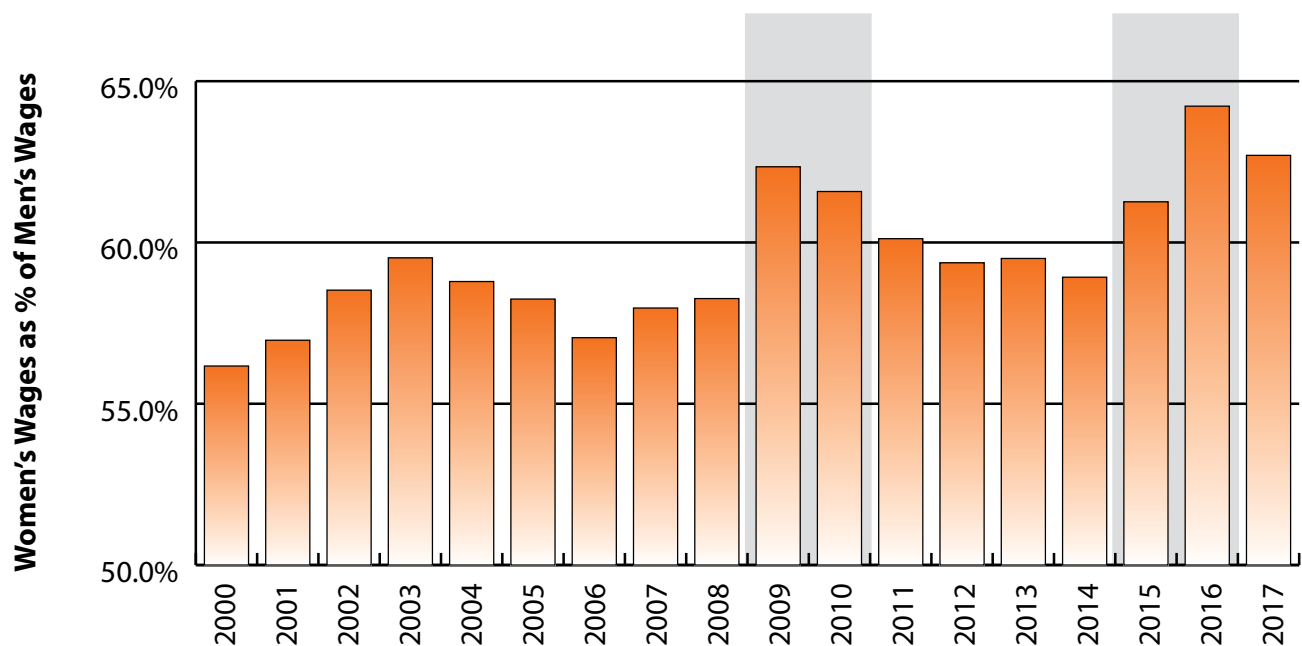


Figure: Women's Average Annual Wages as a Percent of Men's Wages for Persons Working in All Industries in Wyoming at Any Time by Age, 2000-2017

Note: Nonresidents are individuals for whom demographic data are not available.

Shaded areas indicate periods of economic downturn: 2009Q1-2010Q1 and 2015Q2-2016Q4.

Source: Demographics of Persons Working in Wyoming by County, Industry, Age, & Gender, 2000-2017. Research & Planning, Wyoming Department of Workforce Services. Prepared by M. Moore, Research & Planning, WY DWS, 6/12/18.

Average Earnings by Age and Gender in the All Industry in 2000

Gender	Age Group	Number	Age Percent	Gender Percent	Average Annual Wage	Average Quarters Worked	Average Annual Employers
Women	00-19	14,612	11.4	0.0	\$3,168	2.6	1.7
Women	20-24	15,989	12.5	0.0	\$7,399	3.0	1.9
Women	25-34	24,364	19.1	0.0	\$13,812	3.2	1.6
Women	35-44	30,722	24.0	0.0	\$18,164	3.5	1.5
Women	45-54	27,263	21.3	0.0	\$21,054	3.6	1.3
Women	55-64	11,494	9.0	0.0	\$17,527	3.4	1.3
Women	65-Up	3,350	2.6	0.0	\$8,922	3.1	1.1
Women	N/A	80	0.1	0.0	\$9,303	2.0	1.1
Women	Total	127,874	100.0	41.5	\$14,586	3.3	1.5
Men	00-19	15,489	10.8	0.0	\$3,694	2.5	1.7
Men	20-24	18,044	12.6	0.0	\$11,259	2.9	1.9
Men	25-34	29,472	20.5	0.0	\$21,902	3.3	1.6
Men	35-44	33,249	23.1	0.0	\$33,010	3.4	1.4
Men	45-54	29,680	20.7	0.0	\$39,953	3.5	1.3
Men	55-64	13,453	9.4	0.0	\$34,436	3.4	1.2
Men	65-Up	4,166	2.9	0.0	\$18,322	3.0	1.2
Men	N/A	97	0.1	0.0	\$16,266	2.1	1.1
Men	Total	143,650	100.0	46.6	\$25,968	3.2	1.5
N/A	N/A	36,773	100.0	0.0	\$6,549	1.7	1.2
N/A	Total	36,773	100.0	11.9	\$6,549	1.7	1.2
Total	00-19	30,101	9.8	0.0	\$3,438	2.6	1.7
Total	20-24	34,033	11.0	0.0	\$9,445	2.9	1.9
Total	25-34	53,836	17.5	0.0	\$18,241	3.2	1.6
Total	35-44	63,971	20.7	0.0	\$25,880	3.5	1.4
Total	45-54	56,943	18.5	0.0	\$30,904	3.5	1.3
Total	55-64	24,947	8.1	0.0	\$26,645	3.4	1.2
Total	65-Up	7,516	2.4	0.0	\$14,132	3.0	1.2
Total	N/A	36,950	12.0	0.0	\$6,581	1.7	1.2
Total	Total	308,297	100.0	100.0	\$18,931	3.1	1.5

Note: Persons worked any time during the year.

Industry Determination: Based on the industry of employment in which the person made the most money in the year.

N/A: Represents persons with demographic data that are unavailable.

N/A = Nonresidents, individuals for whom demographic data are not available.

Source: Demographics of Persons Working in Wyoming by County, Industry, Age, & Gender, 2000-2017.

Research & Planning, Wyoming Department of Workforce Services.

Prepared by M. Moore, Research & Planning, WY DWS, 6/12/18.

Average Earnings by Age and Gender in the All Industry in 2001

Gender	Age Group	Number	Age Percent	Gender Percent	Average Annual Wage	Average Quarters Worked	Average Annual Employers
Women	00-19	14,754	11.2	0.0	\$3,494	2.6	1.7
Women	20-24	16,805	12.8	0.0	\$7,932	2.9	1.9
Women	25-34	24,771	18.9	0.0	\$14,812	3.2	1.6
Women	35-44	30,160	23.0	0.0	\$19,122	3.4	1.5
Women	45-54	28,737	21.9	0.0	\$22,388	3.5	1.3
Women	55-64	12,390	9.4	0.0	\$18,928	3.4	1.3
Women	65-Up	3,643	2.8	0.0	\$9,789	3.0	1.1
Women	N/A	76	0.1	0.0	\$10,755	2.2	1.1
Women	Total	131,336	100.0	40.6	\$15,554	3.2	1.5
Men	00-19	15,816	10.6	0.0	\$4,145	2.5	1.7
Men	20-24	19,220	12.8	0.0	\$12,482	2.9	1.9
Men	25-34	30,953	20.7	0.0	\$23,754	3.2	1.6
Men	35-44	33,356	22.3	0.0	\$34,294	3.4	1.4
Men	45-54	31,353	20.9	0.0	\$41,262	3.5	1.3
Men	55-64	14,483	9.7	0.0	\$36,391	3.4	1.2
Men	65-Up	4,592	3.1	0.0	\$18,490	3.0	1.2
Men	N/A	83	0.1	0.0	\$14,085	2.1	1.1
Men	Total	149,856	100.0	46.3	\$27,302	3.2	1.5
N/A	N/A	42,693	100.0	0.0	\$6,940	1.6	1.1
N/A	Total	42,693	100.0	13.2	\$6,940	1.6	1.1
Total	00-19	30,570	9.4	0.0	\$3,831	2.6	1.7
Total	20-24	36,025	11.1	0.0	\$10,359	2.9	1.9
Total	25-34	55,724	17.2	0.0	\$19,779	3.2	1.6
Total	35-44	63,516	19.6	0.0	\$27,090	3.4	1.4
Total	45-54	60,090	18.6	0.0	\$32,236	3.5	1.3
Total	55-64	26,873	8.3	0.0	\$28,339	3.4	1.2
Total	65-Up	8,235	2.5	0.0	\$14,640	3.0	1.2
Total	N/A	42,852	13.2	0.0	\$6,961	1.6	1.1
Total	Total	323,885	100.0	100.0	\$19,854	3.0	1.5

Note: Persons worked any time during the year.

Industry Determination: Based on the industry of employment in which the person made the most money in the year.

N/A: Represents persons with demographic data that are unavailable.

N/A = Nonresidents, individuals for whom demographic data are not available.

Source: Demographics of Persons Working in Wyoming by County, Industry, Age, & Gender, 2000-2017.

Research & Planning, Wyoming Department of Workforce Services.

Prepared by M. Moore, Research & Planning, WY DWS, 6/12/18.

Average Earnings by Age and Gender in the All Industry in 2002

Gender	Age Group	Number	Age Percent	Gender Percent	Average Annual Wage	Average Quarters Worked	Average Annual Employers
Women	00-19	14,196	10.8	0.0	\$3,422	2.6	1.7
Women	20-24	17,024	12.9	0.0	\$8,232	2.9	1.8
Women	25-34	25,035	19.0	0.0	\$15,574	3.2	1.5
Women	35-44	28,987	22.0	0.0	\$20,155	3.4	1.4
Women	45-54	29,368	22.3	0.0	\$23,297	3.6	1.3
Women	55-64	13,471	10.2	0.0	\$20,304	3.4	1.2
Women	65-Up	3,713	2.8	0.0	\$10,186	3.1	1.1
Women	N/A	53	0.0	0.0	\$12,515	2.3	1.1
Women	Total	131,847	100.0	41.5	\$16,375	3.3	1.5
Men	00-19	15,050	10.0	0.0	\$3,927	2.5	1.6
Men	20-24	19,349	12.9	0.0	\$12,327	2.9	1.8
Men	25-34	31,515	21.0	0.0	\$24,129	3.2	1.6
Men	35-44	31,936	21.3	0.0	\$34,639	3.4	1.4
Men	45-54	31,884	21.2	0.0	\$42,340	3.5	1.3
Men	55-64	15,586	10.4	0.0	\$37,939	3.4	1.2
Men	65-Up	4,704	3.1	0.0	\$19,853	3.1	1.2
Men	N/A	80	0.1	0.0	\$14,408	2.1	1.1
Men	Total	150,104	100.0	47.2	\$27,981	3.2	1.4
N/A	N/A	36,083	100.0	0.0	\$7,114	1.7	1.1
N/A	Total	36,083	100.0	11.3	\$7,114	1.7	1.1
Total	00-19	29,246	9.2	0.0	\$3,682	2.6	1.6
Total	20-24	36,373	11.4	0.0	\$10,410	2.9	1.8
Total	25-34	56,550	17.8	0.0	\$20,342	3.2	1.6
Total	35-44	60,923	19.2	0.0	\$27,748	3.4	1.4
Total	45-54	61,252	19.3	0.0	\$33,209	3.5	1.3
Total	55-64	29,057	9.1	0.0	\$29,763	3.4	1.2
Total	65-Up	8,417	2.6	0.0	\$15,589	3.1	1.2
Total	N/A	36,216	11.4	0.0	\$7,138	1.7	1.1
Total	Total	318,034	100.0	100.0	\$20,802	3.1	1.4

Note: Persons worked any time during the year.

Industry Determination: Based on the industry of employment in which the person made the most money in the year.

N/A: Represents persons with demographic data that are unavailable.

N/A = Nonresidents, individuals for whom demographic data are not available.

Source: Demographics of Persons Working in Wyoming by County, Industry, Age, & Gender, 2000-2017.

Research & Planning, Wyoming Department of Workforce Services.

Prepared by M. Moore, Research & Planning, WY DWS, 6/12/18.

Average Earnings by Age and Gender in the All Industry in 2003

Gender	Age Group	Number	Age Percent	Gender Percent	Average Annual Wage	Average Quarters Worked	Average Annual Employers
Women	00-19	13,818	10.4	0.0	\$3,477	2.6	1.7
Women	20-24	17,478	13.1	0.0	\$8,441	2.9	1.8
Women	25-34	25,431	19.1	0.0	\$15,967	3.2	1.5
Women	35-44	27,938	21.0	0.0	\$20,757	3.5	1.4
Women	45-54	30,227	22.7	0.0	\$24,095	3.6	1.3
Women	55-64	14,361	10.8	0.0	\$21,499	3.5	1.2
Women	65-Up	4,015	3.0	0.0	\$10,867	3.1	1.1
Women	N/A	64	0.0	0.0	\$11,111	2.1	1.0
Women	Total	133,332	100.0	41.2	\$16,972	3.3	1.4
Men	00-19	14,441	9.4	0.0	\$4,002	2.5	1.6
Men	20-24	20,092	13.1	0.0	\$12,418	2.9	1.8
Men	25-34	32,534	21.2	0.0	\$24,630	3.2	1.5
Men	35-44	31,398	20.5	0.0	\$34,909	3.4	1.4
Men	45-54	32,763	21.4	0.0	\$42,606	3.5	1.3
Men	55-64	16,794	11.0	0.0	\$39,484	3.4	1.2
Men	65-Up	5,031	3.3	0.0	\$20,251	3.1	1.2
Men	N/A	85	0.1	0.0	\$11,553	2.0	1.1
Men	Total	153,138	100.0	47.3	\$28,514	3.2	1.4
N/A	N/A	37,373	100.0	0.0	\$6,958	1.7	1.1
N/A	Total	37,373	100.0	11.5	\$6,958	1.7	1.1
Total	00-19	28,259	8.7	0.0	\$3,745	2.6	1.6
Total	20-24	37,570	11.6	0.0	\$10,568	2.9	1.8
Total	25-34	57,965	17.9	0.0	\$20,829	3.2	1.5
Total	35-44	59,336	18.3	0.0	\$28,246	3.4	1.4
Total	45-54	62,990	19.5	0.0	\$33,723	3.5	1.3
Total	55-64	31,155	9.6	0.0	\$31,194	3.5	1.2
Total	65-Up	9,046	2.8	0.0	\$16,086	3.1	1.2
Total	N/A	37,522	11.6	0.0	\$6,976	1.7	1.1
Total	Total	323,843	100.0	100.0	\$21,274	3.1	1.4

Note: Persons worked any time during the year.

Industry Determination: Based on the industry of employment in which the person made the most money in the year.

N/A: Represents persons with demographic data that are unavailable.

N/A = Nonresidents, individuals for whom demographic data are not available.

Source: Demographics of Persons Working in Wyoming by County, Industry, Age, & Gender, 2000-2017.
Research & Planning, Wyoming Department of Workforce Services.

Prepared by M. Moore, Research & Planning, WY DWS, 6/12/18.

Average Earnings by Age and Gender in the All Industry in 2004

Gender	Age Group	Number	Age Percent	Gender Percent	Average Annual Wage	Average Quarters Worked	Average Annual Employers
Women	00-19	13,732	10.1	0.0	\$3,508	2.7	1.7
Women	20-24	17,779	13.1	0.0	\$8,838	3.0	1.8
Women	25-34	26,120	19.3	0.0	\$16,661	3.3	1.6
Women	35-44	27,286	20.1	0.0	\$21,679	3.5	1.4
Women	45-54	30,710	22.7	0.0	\$25,362	3.6	1.3
Women	55-64	15,586	11.5	0.0	\$22,704	3.5	1.2
Women	65-Up	4,258	3.1	0.0	\$11,379	3.2	1.1
Women	N/A	55	0.0	0.0	\$11,696	2.2	1.1
Women	Total	135,526	100.0	41.8	\$17,811	3.3	1.5
Men	00-19	14,218	9.1	0.0	\$4,262	2.5	1.6
Men	20-24	20,589	13.2	0.0	\$13,502	3.0	1.8
Men	25-34	33,609	21.5	0.0	\$26,242	3.3	1.6
Men	35-44	30,802	19.7	0.0	\$36,757	3.4	1.4
Men	45-54	33,536	21.5	0.0	\$44,678	3.5	1.3
Men	55-64	17,786	11.4	0.0	\$42,632	3.5	1.2
Men	65-Up	5,386	3.5	0.0	\$21,441	3.1	1.2
Men	N/A	60	0.0	0.0	\$15,946	2.1	1.1
Men	Total	155,986	100.0	48.1	\$30,296	3.3	1.4
N/A	N/A	32,964	100.0	0.0	\$7,582	1.8	1.1
N/A	Total	32,964	100.0	10.2	\$7,582	1.8	1.1
Total	00-19	27,950	8.6	0.0	\$3,891	2.6	1.6
Total	20-24	38,368	11.8	0.0	\$11,341	3.0	1.8
Total	25-34	59,729	18.4	0.0	\$22,052	3.3	1.6
Total	35-44	58,088	17.9	0.0	\$29,674	3.4	1.4
Total	45-54	64,246	19.8	0.0	\$35,445	3.6	1.3
Total	55-64	33,372	10.3	0.0	\$33,325	3.5	1.2
Total	65-Up	9,644	3.0	0.0	\$16,999	3.2	1.2
Total	N/A	33,079	10.2	0.0	\$7,604	1.8	1.1
Total	Total	324,476	100.0	100.0	\$22,774	3.1	1.4

Note: Persons worked any time during the year.

Industry Determination: Based on the industry of employment in which the person made the most money in the year.

N/A: Represents persons with demographic data that are unavailable.

N/A = Nonresidents, individuals for whom demographic data are not available.

Source: Demographics of Persons Working in Wyoming by County, Industry, Age, & Gender, 2000-2017.

Research & Planning, Wyoming Department of Workforce Services.

Prepared by M. Moore, Research & Planning, WY DWS, 6/12/18.

Average Earnings by Age and Gender in the All Industry in 2005

Gender	Age Group	Number	Age Percent	Gender Percent	Average Annual Wage	Average Quarters Worked	Average Annual Employers
Women	00-19	13,741	9.9	0.0	\$3,732	2.7	1.7
Women	20-24	18,035	13.0	0.0	\$9,279	3.0	1.8
Women	25-34	26,990	19.5	0.0	\$17,325	3.3	1.6
Women	35-44	26,806	19.4	0.0	\$22,881	3.5	1.5
Women	45-54	31,358	22.7	0.0	\$26,421	3.6	1.3
Women	55-64	16,764	12.1	0.0	\$24,384	3.5	1.2
Women	65-Up	4,538	3.3	0.0	\$12,134	3.2	1.2
Women	N/A	45	0.0	0.0	\$16,602	2.4	1.1
Women	Total	138,277	100.0	41.5	\$18,750	3.3	1.5
Men	00-19	14,477	9.0	0.0	\$4,679	2.6	1.7
Men	20-24	21,093	13.1	0.0	\$15,108	3.0	1.8
Men	25-34	35,015	21.7	0.0	\$28,402	3.3	1.6
Men	35-44	31,089	19.3	0.0	\$38,693	3.4	1.4
Men	45-54	34,577	21.5	0.0	\$46,776	3.5	1.3
Men	55-64	19,088	11.8	0.0	\$44,475	3.5	1.2
Men	65-Up	5,785	3.6	0.0	\$23,713	3.2	1.2
Men	N/A	53	0.0	0.0	\$20,817	2.4	1.1
Men	Total	161,177	100.0	48.3	\$32,191	3.3	1.5
N/A	N/A	33,999	100.0	0.0	\$8,942	1.9	1.2
N/A	Total	33,999	100.0	10.2	\$8,942	1.9	1.2
Total	00-19	28,218	8.5	0.0	\$4,218	2.6	1.7
Total	20-24	39,128	11.7	0.0	\$12,421	3.0	1.8
Total	25-34	62,005	18.6	0.0	\$23,581	3.3	1.6
Total	35-44	57,895	17.4	0.0	\$31,372	3.4	1.4
Total	45-54	65,935	19.8	0.0	\$37,096	3.6	1.3
Total	55-64	35,852	10.8	0.0	\$35,081	3.5	1.2
Total	65-Up	10,323	3.1	0.0	\$18,623	3.2	1.2
Total	N/A	34,097	10.2	0.0	\$8,971	1.9	1.2
Total	Total	333,453	100.0	100.0	\$24,247	3.1	1.4

Note: Persons worked any time during the year.

Industry Determination: Based on the industry of employment in which the person made the most money in the year.

N/A: Represents persons with demographic data that are unavailable.

N/A = Nonresidents, individuals for whom demographic data are not available.

Source: Demographics of Persons Working in Wyoming by County, Industry, Age, & Gender, 2000-2017.

Research & Planning, Wyoming Department of Workforce Services.

Prepared by M. Moore, Research & Planning, WY DWS, 6/12/18.

Average Earnings by Age and Gender in the All Industry in 2006

Gender	Age Group	Number	Age Percent	Gender Percent	Average Annual Wage	Average Quarters Worked	Average Annual Employers
Women	00-19	14,220	10.0	0.0	\$3,988	2.7	1.8
Women	20-24	17,933	12.6	0.0	\$10,317	3.0	1.9
Women	25-34	27,906	19.7	0.0	\$18,841	3.3	1.6
Women	35-44	26,698	18.8	0.0	\$24,529	3.5	1.5
Women	45-54	32,097	22.6	0.0	\$28,044	3.6	1.3
Women	55-64	18,069	12.7	0.0	\$26,115	3.5	1.2
Women	65-Up	4,846	3.4	0.0	\$13,152	3.2	1.2
Women	N/A	54	0.0	0.0	\$16,113	2.3	1.2
Women	Total	141,823	100.0	40.1	\$20,159	3.3	1.5
Men	00-19	15,260	8.9	0.0	\$5,297	2.6	1.7
Men	20-24	21,962	12.9	0.0	\$18,035	3.0	1.8
Men	25-34	37,584	22.0	0.0	\$31,995	3.3	1.6
Men	35-44	32,434	19.0	0.0	\$41,879	3.4	1.4
Men	45-54	36,081	21.1	0.0	\$49,864	3.5	1.3
Men	55-64	20,995	12.3	0.0	\$48,707	3.5	1.2
Men	65-Up	6,256	3.7	0.0	\$26,995	3.2	1.2
Men	N/A	60	0.0	0.0	\$20,759	2.2	1.1
Men	Total	170,632	100.0	48.3	\$35,337	3.3	1.5
N/A	N/A	40,911	100.0	0.0	\$10,720	1.9	1.2
N/A	Total	40,911	100.0	11.6	\$10,720	1.9	1.2
Total	00-19	29,480	8.3	0.0	\$4,666	2.6	1.7
Total	20-24	39,895	11.3	0.0	\$14,566	3.0	1.8
Total	25-34	65,490	18.5	0.0	\$26,390	3.3	1.6
Total	35-44	59,132	16.7	0.0	\$34,045	3.4	1.4
Total	45-54	68,178	19.3	0.0	\$39,592	3.5	1.3
Total	55-64	39,064	11.1	0.0	\$38,258	3.5	1.2
Total	65-Up	11,102	3.1	0.0	\$20,952	3.2	1.2
Total	N/A	41,025	11.6	0.0	\$10,742	1.9	1.2
Total	Total	353,366	100.0	100.0	\$26,395	3.1	1.4

Note: Persons worked any time during the year.

Industry Determination: Based on the industry of employment in which the person made the most money in the year.

N/A: Represents persons with demographic data that are unavailable.

N/A = Nonresidents, individuals for whom demographic data are not available.

Source: Demographics of Persons Working in Wyoming by County, Industry, Age, & Gender, 2000-2017.

Research & Planning, Wyoming Department of Workforce Services.

Prepared by M. Moore, Research & Planning, WY DWS, 6/12/18.

Average Earnings by Age and Gender in the All Industry in 2007

Gender	Age Group	Number	Age Percent	Gender Percent	Average Annual Wage	Average Quarters Worked	Average Annual Employers
Women	00-19	14,319	9.8	0.0	\$4,202	2.7	1.8
Women	20-24	18,595	12.7	0.0	\$11,049	3.0	1.8
Women	25-34	29,523	20.1	0.0	\$20,374	3.3	1.6
Women	35-44	26,835	18.3	0.0	\$26,473	3.5	1.5
Women	45-54	32,595	22.2	0.0	\$30,101	3.6	1.3
Women	55-64	19,518	13.3	0.0	\$28,630	3.6	1.2
Women	65-Up	5,342	3.6	0.0	\$14,387	3.2	1.2
Women	N/A	57	0.0	0.0	\$18,167	2.3	1.1
Women	Total	146,784	100.0	39.3	\$21,769	3.3	1.5
Men	00-19	15,520	8.6	0.0	\$5,554	2.6	1.7
Men	20-24	22,896	12.7	0.0	\$19,434	3.0	1.8
Men	25-34	40,672	22.6	0.0	\$34,647	3.3	1.5
Men	35-44	33,614	18.7	0.0	\$44,453	3.4	1.4
Men	45-54	37,196	20.7	0.0	\$52,237	3.5	1.3
Men	55-64	22,781	12.7	0.0	\$51,476	3.5	1.2
Men	65-Up	6,873	3.8	0.0	\$28,183	3.2	1.2
Men	N/A	67	0.0	0.0	\$19,861	2.1	1.1
Men	Total	179,619	100.0	48.1	\$37,553	3.3	1.4
N/A	N/A	46,823	100.0	0.0	\$12,105	1.9	1.2
N/A	Total	46,823	100.0	12.5	\$12,105	1.9	1.2
Total	00-19	29,839	8.0	0.0	\$4,905	2.6	1.7
Total	20-24	41,491	11.1	0.0	\$15,676	3.0	1.8
Total	25-34	70,195	18.8	0.0	\$28,644	3.3	1.6
Total	35-44	60,449	16.2	0.0	\$36,471	3.4	1.4
Total	45-54	69,791	18.7	0.0	\$41,899	3.5	1.3
Total	55-64	42,299	11.3	0.0	\$40,934	3.5	1.2
Total	65-Up	12,215	3.3	0.0	\$22,150	3.2	1.2
Total	N/A	46,947	12.6	0.0	\$12,124	1.9	1.2
Total	Total	373,226	100.0	100.0	\$28,153	3.1	1.4

Note: Persons worked any time during the year.

Industry Determination: Based on the industry of employment in which the person made the most money in the year.

N/A: Represents persons with demographic data that are unavailable.

N/A = Nonresidents, individuals for whom demographic data are not available.

Source: Demographics of Persons Working in Wyoming by County, Industry, Age, & Gender, 2000-2017.
Research & Planning, Wyoming Department of Workforce Services.

Prepared by M. Moore, Research & Planning, WY DWS, 6/12/18.

Average Earnings by Age and Gender in the All Industry in 2008

Gender	Age Group	Number	Age Percent	Gender Percent	Average Annual Wage	Average Quarters Worked	Average Annual Employers
Women	00-19	13,692	9.2	0.0	\$4,463	2.7	1.7
Women	20-24	18,681	12.6	0.0	\$11,870	3.0	1.8
Women	25-34	30,463	20.5	0.0	\$22,082	3.3	1.5
Women	35-44	26,636	17.9	0.0	\$28,095	3.5	1.4
Women	45-54	32,567	21.9	0.0	\$31,685	3.6	1.3
Women	55-64	20,773	14.0	0.0	\$30,669	3.6	1.2
Women	65-Up	5,784	3.9	0.0	\$15,843	3.3	1.2
Women	N/A	45	0.0	0.0	\$19,601	2.4	1.0
Women	Total	148,641	100.0	38.9	\$23,314	3.3	1.5
Men	00-19	14,713	7.9	0.0	\$6,002	2.6	1.6
Men	20-24	23,264	12.6	0.0	\$20,944	3.0	1.7
Men	25-34	43,246	23.3	0.0	\$37,275	3.3	1.5
Men	35-44	34,574	18.7	0.0	\$47,025	3.4	1.4
Men	45-54	37,864	20.4	0.0	\$54,263	3.5	1.3
Men	55-64	24,304	13.1	0.0	\$54,674	3.5	1.2
Men	65-Up	7,338	4.0	0.0	\$29,849	3.2	1.2
Men	N/A	52	0.0	0.0	\$24,685	2.3	1.2
Men	Total	185,355	100.0	48.6	\$40,016	3.3	1.4
N/A	N/A	47,779	100.0	0.0	\$12,669	1.9	1.2
N/A	Total	47,779	100.0	12.5	\$12,669	1.9	1.2
Total	00-19	28,405	7.4	0.0	\$5,261	2.7	1.7
Total	20-24	41,945	11.0	0.0	\$16,903	3.0	1.7
Total	25-34	73,709	19.3	0.0	\$30,996	3.3	1.5
Total	35-44	61,210	16.0	0.0	\$38,788	3.4	1.4
Total	45-54	70,431	18.4	0.0	\$43,823	3.5	1.3
Total	55-64	45,077	11.8	0.0	\$43,612	3.5	1.2
Total	65-Up	13,122	3.4	0.0	\$23,675	3.2	1.2
Total	N/A	47,876	12.5	0.0	\$12,689	1.9	1.2
Total	Total	381,775	100.0	100.0	\$30,090	3.1	1.4

Note: Persons worked any time during the year.

Industry Determination: Based on the industry of employment in which the person made the most money in the year.

N/A: Represents persons with demographic data that are unavailable.

N/A = Nonresidents, individuals for whom demographic data are not available.

Source: Demographics of Persons Working in Wyoming by County, Industry, Age, & Gender, 2000-2017.

Research & Planning, Wyoming Department of Workforce Services.

Prepared by M. Moore, Research & Planning, WY DWS, 6/12/18.

Average Earnings by Age and Gender in the All Industry in 2009

Gender	Age Group	Number	Age Percent	Gender Percent	Average Annual Wage	Average Quarters Worked	Average Annual Employers
Women	00-19	11,307	7.8	0.0	\$4,352	2.7	1.5
Women	20-24	17,803	12.3	0.0	\$11,522	3.0	1.6
Women	25-34	30,766	21.3	0.0	\$22,454	3.3	1.4
Women	35-44	25,797	17.8	0.0	\$28,845	3.5	1.3
Women	45-54	31,445	21.7	0.0	\$32,444	3.6	1.3
Women	55-64	21,524	14.9	0.0	\$31,615	3.6	1.2
Women	65-Up	5,979	4.1	0.0	\$16,602	3.3	1.1
Women	N/A	42	0.0	0.0	\$21,258	2.4	1.0
Women	Total	144,663	100.0	40.6	\$24,126	3.4	1.4
Men	00-19	11,473	6.5	0.0	\$5,275	2.6	1.4
Men	20-24	21,390	12.1	0.0	\$17,900	2.9	1.5
Men	25-34	42,482	24.0	0.0	\$34,504	3.3	1.4
Men	35-44	33,250	18.8	0.0	\$45,250	3.4	1.3
Men	45-54	36,097	20.4	0.0	\$52,300	3.5	1.2
Men	55-64	24,868	14.1	0.0	\$53,531	3.5	1.2
Men	65-Up	7,325	4.1	0.0	\$29,022	3.2	1.1
Men	N/A	36	0.0	0.0	\$21,530	2.6	1.1
Men	Total	176,921	100.0	49.7	\$38,696	3.3	1.3
N/A	N/A	34,638	100.0	0.0	\$12,739	2.0	1.1
N/A	Total	34,638	100.0	9.7	\$12,739	2.0	1.1
Total	00-19	22,780	6.4	0.0	\$4,817	2.6	1.4
Total	20-24	39,193	11.0	0.0	\$15,003	3.0	1.5
Total	25-34	73,248	20.6	0.0	\$29,443	3.3	1.4
Total	35-44	59,047	16.6	0.0	\$38,082	3.4	1.3
Total	45-54	67,542	19.0	0.0	\$43,056	3.5	1.2
Total	55-64	46,392	13.0	0.0	\$43,363	3.5	1.2
Total	65-Up	13,304	3.7	0.0	\$23,440	3.3	1.1
Total	N/A	34,716	9.7	0.0	\$12,758	2.0	1.1
Total	Total	356,222	100.0	100.0	\$30,255	3.2	1.3

Note: Persons worked any time during the year.

Industry Determination: Based on the industry of employment in which the person made the most money in the year.

N/A: Represents persons with demographic data that are unavailable.

N/A = Nonresidents, individuals for whom demographic data are not available.

Source: Demographics of Persons Working in Wyoming by County, Industry, Age, & Gender, 2000-2017.

Research & Planning, Wyoming Department of Workforce Services.

Prepared by M. Moore, Research & Planning, WY DWS, 6/12/18.

Average Earnings by Age and Gender in the All Industry in 2010

Gender	Age Group	Number	Age Percent	Gender Percent	Average Annual Wage	Average Quarters Worked	Average Annual Employers
Women	00-19	10,502	7.3	0.0	\$4,227	2.6	1.5
Women	20-24	17,359	12.1	0.0	\$11,320	3.0	1.6
Women	25-34	31,113	21.7	0.0	\$22,610	3.3	1.4
Women	35-44	25,502	17.7	0.0	\$29,442	3.5	1.4
Women	45-54	30,550	21.3	0.0	\$32,516	3.6	1.3
Women	55-64	22,497	15.7	0.0	\$32,495	3.6	1.2
Women	65-Up	6,115	4.3	0.0	\$17,064	3.3	1.1
Women	N/A	39	0.0	0.0	\$20,419	2.5	1.0
Women	Total	143,677	100.0	40.9	\$24,532	3.4	1.4
Men	00-19	10,539	6.0	0.0	\$5,163	2.5	1.4
Men	20-24	20,403	11.7	0.0	\$17,345	2.9	1.5
Men	25-34	42,477	24.3	0.0	\$35,314	3.2	1.4
Men	35-44	32,949	18.8	0.0	\$46,861	3.4	1.3
Men	45-54	35,065	20.1	0.0	\$53,223	3.5	1.2
Men	55-64	25,857	14.8	0.0	\$54,593	3.5	1.2
Men	65-Up	7,485	4.3	0.0	\$31,100	3.2	1.1
Men	N/A	31	0.0	0.0	\$28,902	2.6	1.2
Men	Total	174,806	100.0	49.7	\$39,838	3.3	1.3
N/A	N/A	33,026	100.0	0.0	\$14,050	2.0	1.1
N/A	Total	33,026	100.0	9.4	\$14,050	2.0	1.1
Total	00-19	21,041	6.0	0.0	\$4,696	2.5	1.4
Total	20-24	37,762	10.7	0.0	\$14,575	3.0	1.6
Total	25-34	73,590	20.9	0.0	\$29,943	3.3	1.4
Total	35-44	58,451	16.6	0.0	\$39,261	3.4	1.3
Total	45-54	65,615	18.7	0.0	\$43,582	3.5	1.2
Total	55-64	48,354	13.8	0.0	\$44,312	3.5	1.2
Total	65-Up	13,600	3.9	0.0	\$24,789	3.3	1.1
Total	N/A	33,096	9.4	0.0	\$14,071	2.0	1.1
Total	Total	351,509	100.0	100.0	\$31,159	3.2	1.3

Note: Persons worked any time during the year.

Industry Determination: Based on the industry of employment in which the person made the most money in the year.

N/A: Represents persons with demographic data that are unavailable.

N/A = Nonresidents, individuals for whom demographic data are not available.

Source: Demographics of Persons Working in Wyoming by County, Industry, Age, & Gender, 2000-2017.

Research & Planning, Wyoming Department of Workforce Services.

Prepared by M. Moore, Research & Planning, WY DWS, 6/12/18.

Average Earnings by Age and Gender in the All Industry in 2011

Gender	Age Group	Number	Age Percent	Gender Percent	Average Annual Wage	Average Quarters Worked	Average Annual Employers
Women	00-19	10,388	7.2	0.0	\$4,246	2.6	1.5
Women	20-24	17,605	12.2	0.0	\$11,311	3.0	1.6
Women	25-34	31,696	21.9	0.0	\$23,044	3.3	1.4
Women	35-44	25,724	17.8	0.0	\$30,244	3.5	1.4
Women	45-54	29,408	20.3	0.0	\$33,135	3.6	1.3
Women	55-64	23,194	16.0	0.0	\$33,328	3.6	1.2
Women	65-Up	6,469	4.5	0.0	\$18,300	3.3	1.1
Women	N/A	33	0.0	0.0	\$24,034	2.7	1.0
Women	Total	144,517	100.0	40.6	\$25,037	3.4	1.4
Men	00-19	10,732	6.1	0.0	\$5,374	2.5	1.5
Men	20-24	20,721	11.7	0.0	\$18,632	2.9	1.6
Men	25-34	43,379	24.5	0.0	\$37,452	3.3	1.4
Men	35-44	33,637	19.0	0.0	\$49,186	3.4	1.3
Men	45-54	34,331	19.4	0.0	\$55,214	3.5	1.2
Men	55-64	26,658	15.0	0.0	\$56,550	3.5	1.2
Men	65-Up	7,896	4.5	0.0	\$33,010	3.2	1.1
Men	N/A	30	0.0	0.0	\$31,756	2.7	1.1
Men	Total	177,384	100.0	49.8	\$41,647	3.3	1.3
N/A	N/A	33,956	100.0	0.0	\$14,361	2.0	1.1
N/A	Total	33,956	100.0	9.5	\$14,361	2.0	1.1
Total	00-19	21,120	5.9	0.0	\$4,819	2.6	1.5
Total	20-24	38,326	10.8	0.0	\$15,269	3.0	1.6
Total	25-34	75,075	21.1	0.0	\$31,369	3.3	1.4
Total	35-44	59,361	16.7	0.0	\$40,978	3.4	1.3
Total	45-54	63,739	17.9	0.0	\$45,027	3.5	1.3
Total	55-64	49,852	14.0	0.0	\$45,746	3.5	1.2
Total	65-Up	14,365	4.0	0.0	\$26,386	3.3	1.1
Total	N/A	34,019	9.6	0.0	\$14,386	2.0	1.1
Total	Total	355,857	100.0	100.0	\$32,298	3.2	1.3

Note: Persons worked any time during the year.

Industry Determination: Based on the industry of employment in which the person made the most money in the year.

N/A: Represents persons with demographic data that are unavailable.

N/A = Nonresidents, individuals for whom demographic data are not available.

Source: Demographics of Persons Working in Wyoming by County, Industry, Age, & Gender, 2000-2017.

Research & Planning, Wyoming Department of Workforce Services.

Prepared by M. Moore, Research & Planning, WY DWS, 6/12/18.

Average Earnings by Age and Gender in the All Industry in 2012

Gender	Age Group	Number	Age Percent	Gender Percent	Average Annual Wage	Average Quarters Worked	Average Annual Employers
Women	00-19	10,606	7.3	0.0	\$4,358	2.6	1.5
Women	20-24	17,586	12.0	0.0	\$11,604	3.0	1.7
Women	25-34	32,236	22.1	0.0	\$23,652	3.3	1.5
Women	35-44	26,197	17.9	0.0	\$30,961	3.5	1.4
Women	45-54	28,577	19.6	0.0	\$33,823	3.6	1.3
Women	55-64	23,821	16.3	0.0	\$33,723	3.6	1.2
Women	65-Up	6,950	4.8	0.0	\$19,605	3.3	1.1
Women	N/A	34	0.0	0.0	\$26,367	2.9	1.1
Women	Total	146,007	100.0	40.5	\$25,552	3.4	1.4
Men	00-19	10,867	6.1	0.0	\$5,559	2.5	1.5
Men	20-24	20,650	11.5	0.0	\$19,263	3.0	1.6
Men	25-34	43,936	24.6	0.0	\$38,698	3.3	1.4
Men	35-44	34,210	19.1	0.0	\$51,260	3.4	1.3
Men	45-54	33,350	18.6	0.0	\$56,423	3.5	1.2
Men	55-64	27,251	15.2	0.0	\$58,609	3.5	1.2
Men	65-Up	8,536	4.8	0.0	\$35,742	3.3	1.1
Men	N/A	31	0.0	0.0	\$25,746	2.5	1.1
Men	Total	178,831	100.0	49.7	\$43,039	3.3	1.3
N/A	N/A	35,322	100.0	0.0	\$15,164	2.0	1.1
N/A	Total	35,322	100.0	9.8	\$15,164	2.0	1.1
Total	00-19	21,473	6.0	0.0	\$4,966	2.6	1.5
Total	20-24	38,236	10.6	0.0	\$15,740	3.0	1.6
Total	25-34	76,172	21.1	0.0	\$32,330	3.3	1.4
Total	35-44	60,407	16.8	0.0	\$42,456	3.5	1.3
Total	45-54	61,927	17.2	0.0	\$45,994	3.5	1.3
Total	55-64	51,072	14.2	0.0	\$47,001	3.6	1.2
Total	65-Up	15,486	4.3	0.0	\$28,500	3.3	1.1
Total	N/A	35,387	9.8	0.0	\$15,184	2.0	1.1
Total	Total	360,160	100.0	100.0	\$33,216	3.2	1.3

Note: Persons worked any time during the year.

Industry Determination: Based on the industry of employment in which the person made the most money in the year.

N/A: Represents persons with demographic data that are unavailable.

N/A = Nonresidents, individuals for whom demographic data are not available.

Source: Demographics of Persons Working in Wyoming by County, Industry, Age, & Gender, 2000-2017.

Research & Planning, Wyoming Department of Workforce Services.

Prepared by M. Moore, Research & Planning, WY DWS, 6/12/18.

Average Earnings by Age and Gender in the All Industry in 2013

Gender	Age Group	Number	Age Percent	Gender Percent	Average Annual Wage	Average Quarters Worked	Average Annual Employers
Women	00-19	10,590	7.2	0.0	\$4,405	2.6	1.6
Women	20-24	17,455	11.9	0.0	\$11,858	3.0	1.7
Women	25-34	32,487	22.2	0.0	\$24,308	3.3	1.5
Women	35-44	26,381	18.1	0.0	\$31,590	3.5	1.4
Women	45-54	27,688	19.0	0.0	\$34,740	3.6	1.3
Women	55-64	24,064	16.5	0.0	\$34,766	3.6	1.2
Women	65-Up	7,391	5.1	0.0	\$20,021	3.3	1.1
Women	N/A	35	0.0	0.0	\$21,648	2.6	1.1
Women	Total	146,091	100.0	40.4	\$26,175	3.4	1.4
Men	00-19	10,712	6.0	0.0	\$5,537	2.5	1.5
Men	20-24	20,318	11.3	0.0	\$19,203	3.0	1.6
Men	25-34	43,962	24.6	0.0	\$39,494	3.3	1.4
Men	35-44	34,614	19.3	0.0	\$52,587	3.4	1.3
Men	45-54	32,473	18.1	0.0	\$57,155	3.5	1.3
Men	55-64	27,931	15.6	0.0	\$59,928	3.5	1.2
Men	65-Up	8,990	5.0	0.0	\$37,649	3.3	1.1
Men	N/A	25	0.0	0.0	\$30,493	2.8	1.1
Men	Total	179,025	100.0	49.6	\$43,988	3.3	1.3
N/A	N/A	36,174	100.0	0.0	\$14,651	2.1	1.1
N/A	Total	36,174	100.0	10.0	\$14,651	2.1	1.1
Total	00-19	21,302	5.9	0.0	\$4,974	2.6	1.5
Total	20-24	37,773	10.5	0.0	\$15,809	3.0	1.7
Total	25-34	76,449	21.2	0.0	\$33,041	3.3	1.4
Total	35-44	60,995	16.9	0.0	\$43,506	3.5	1.3
Total	45-54	60,161	16.7	0.0	\$46,838	3.5	1.3
Total	55-64	51,995	14.4	0.0	\$48,282	3.6	1.2
Total	65-Up	16,381	4.5	0.0	\$29,695	3.3	1.1
Total	N/A	36,234	10.0	0.0	\$14,669	2.1	1.1
Total	Total	361,290	100.0	100.0	\$33,848	3.2	1.3

Note: Persons worked any time during the year.

Industry Determination: Based on the industry of employment in which the person made the most money in the year.

N/A: Represents persons with demographic data that are unavailable.

N/A = Nonresidents, individuals for whom demographic data are not available.

Source: Demographics of Persons Working in Wyoming by County, Industry, Age, & Gender, 2000-2017.

Research & Planning, Wyoming Department of Workforce Services.

Prepared by M. Moore, Research & Planning, WY DWS, 6/12/18.

Average Earnings by Age and Gender in the All Industry in 2014

Gender	Age Group	Number	Age Percent	Gender Percent	Average Annual Wage	Average Quarters Worked	Average Annual Employers
Women	00-19	10,876	7.4	0.0	\$4,587	2.6	1.6
Women	20-24	17,249	11.7	0.0	\$12,572	3.0	1.7
Women	25-34	32,726	22.3	0.0	\$24,886	3.3	1.5
Women	35-44	26,955	18.4	0.0	\$32,414	3.5	1.4
Women	45-54	26,919	18.3	0.0	\$35,583	3.6	1.3
Women	55-64	24,405	16.6	0.0	\$35,586	3.6	1.2
Women	65-Up	7,680	5.2	0.0	\$20,757	3.3	1.1
Women	N/A	37	0.0	0.0	\$23,621	2.5	1.0
Women	Total	146,847	100.0	39.9	\$26,841	3.4	1.4
Men	00-19	11,009	6.1	0.0	\$5,915	2.5	1.6
Men	20-24	20,195	11.2	0.0	\$20,784	3.0	1.7
Men	25-34	44,748	24.8	0.0	\$41,147	3.3	1.4
Men	35-44	35,200	19.5	0.0	\$55,152	3.4	1.3
Men	45-54	31,834	17.6	0.0	\$58,833	3.5	1.3
Men	55-64	28,299	15.7	0.0	\$60,955	3.5	1.2
Men	65-Up	9,460	5.2	0.0	\$38,946	3.3	1.1
Men	N/A	27	0.0	0.0	\$29,306	2.7	1.1
Men	Total	180,772	100.0	49.1	\$45,552	3.3	1.4
N/A	N/A	40,799	100.0	0.0	\$15,390	2.0	1.1
N/A	Total	40,799	100.0	11.1	\$15,390	2.0	1.1
Total	00-19	21,885	5.9	0.0	\$5,255	2.6	1.6
Total	20-24	37,444	10.2	0.0	\$17,001	3.0	1.7
Total	25-34	77,474	21.0	0.0	\$34,278	3.3	1.5
Total	35-44	62,155	16.9	0.0	\$45,291	3.5	1.4
Total	45-54	58,753	15.9	0.0	\$48,181	3.5	1.3
Total	55-64	52,704	14.3	0.0	\$49,208	3.6	1.2
Total	65-Up	17,140	4.7	0.0	\$30,796	3.3	1.1
Total	N/A	40,863	11.1	0.0	\$15,406	2.1	1.1
Total	Total	368,418	100.0	100.0	\$34,754	3.2	1.4

Note: Persons worked any time during the year.

Industry Determination: Based on the industry of employment in which the person made the most money in the year.

N/A: Represents persons with demographic data that are unavailable.

N/A = Nonresidents, individuals for whom demographic data are not available.

Source: Demographics of Persons Working in Wyoming by County, Industry, Age, & Gender, 2000-2017.

Research & Planning, Wyoming Department of Workforce Services.

Prepared by M. Moore, Research & Planning, WY DWS, 6/12/18.

Average Earnings by Age and Gender in the All Industry in 2015

Gender	Age Group	Number	Age Percent	Gender Percent	Average Annual Wage	Average Quarters Worked	Average Annual Employers
Women	00-19	10,915	7.5	0.0	\$4,936	2.7	1.6
Women	20-24	16,784	11.5	0.0	\$13,023	3.0	1.7
Women	25-34	32,714	22.4	0.0	\$25,797	3.4	1.5
Women	35-44	27,356	18.7	0.0	\$33,404	3.5	1.4
Women	45-54	26,081	17.8	0.0	\$37,060	3.6	1.3
Women	55-64	24,424	16.7	0.0	\$36,563	3.6	1.2
Women	65-Up	8,024	5.5	0.0	\$21,573	3.3	1.1
Women	N/A	39	0.0	0.0	\$18,720	2.3	1.0
Women	Total	146,337	100.0	40.2	\$27,769	3.4	1.4
Men	00-19	10,839	6.1	0.0	\$5,731	2.6	1.5
Men	20-24	19,131	10.8	0.0	\$19,872	3.0	1.7
Men	25-34	43,237	24.4	0.0	\$39,937	3.3	1.4
Men	35-44	34,913	19.7	0.0	\$54,618	3.4	1.3
Men	45-54	30,878	17.4	0.0	\$59,242	3.5	1.3
Men	55-64	28,325	16.0	0.0	\$61,326	3.5	1.2
Men	65-Up	9,692	5.5	0.0	\$39,433	3.3	1.1
Men	N/A	27	0.0	0.0	\$28,955	2.6	1.2
Men	Total	177,042	100.0	48.6	\$45,329	3.3	1.4
N/A	N/A	40,587	100.0	0.0	\$14,704	2.1	1.1
N/A	Total	40,587	100.0	11.2	\$14,704	2.1	1.1
Total	00-19	21,754	6.0	0.0	\$5,332	2.6	1.6
Total	20-24	35,915	9.9	0.0	\$16,671	3.0	1.7
Total	25-34	75,951	20.9	0.0	\$33,846	3.3	1.5
Total	35-44	62,269	17.1	0.0	\$45,298	3.5	1.4
Total	45-54	56,959	15.6	0.0	\$49,085	3.5	1.3
Total	55-64	52,749	14.5	0.0	\$49,860	3.6	1.2
Total	65-Up	17,716	4.9	0.0	\$31,344	3.3	1.1
Total	N/A	40,653	11.2	0.0	\$14,718	2.1	1.1
Total	Total	363,966	100.0	100.0	\$34,854	3.2	1.4

Note: Persons worked any time during the year.

Industry Determination: Based on the industry of employment in which the person made the most money in the year.

N/A: Represents persons with demographic data that are unavailable.

N/A = Nonresidents, individuals for whom demographic data are not available.

Source: Demographics of Persons Working in Wyoming by County, Industry, Age, & Gender, 2000-2017.

Research & Planning, Wyoming Department of Workforce Services.

Prepared by M. Moore, Research & Planning, WY DWS, 6/12/18.

Average Earnings by Age and Gender in the All Industry in 2016

Gender	Age Group	Number	Age Percent	Gender Percent	Average Annual Wage	Average Quarters Worked	Average Annual Employers
Women	00-19	10,088	7.1	0.0	\$4,815	2.7	1.5
Women	20-24	15,766	11.1	0.0	\$13,323	3.1	1.7
Women	25-34	31,592	22.3	0.0	\$26,240	3.4	1.5
Women	35-44	27,028	19.1	0.0	\$34,029	3.6	1.4
Women	45-54	25,027	17.6	0.0	\$37,528	3.6	1.3
Women	55-64	24,154	17.0	0.0	\$36,396	3.6	1.2
Women	65-Up	8,163	5.8	0.0	\$21,706	3.3	1.1
Women	N/A	38	0.0	0.0	\$16,608	2.2	1.0
Women	Total	141,856	100.0	41.2	\$28,222	3.4	1.4
Men	00-19	9,788	5.9	0.0	\$5,403	2.6	1.4
Men	20-24	17,013	10.3	0.0	\$18,013	3.0	1.6
Men	25-34	39,593	24.0	0.0	\$37,576	3.3	1.4
Men	35-44	33,215	20.1	0.0	\$53,280	3.5	1.3
Men	45-54	28,856	17.5	0.0	\$57,588	3.5	1.2
Men	55-64	27,121	16.4	0.0	\$59,179	3.5	1.2
Men	65-Up	9,669	5.9	0.0	\$39,149	3.3	1.1
Men	N/A	26	0.0	0.0	\$25,801	3.0	1.4
Men	Total	165,281	100.0	48.0	\$43,942	3.3	1.3
N/A	N/A	37,503	100.0	0.0	\$14,306	2.1	1.2
N/A	Total	37,503	100.0	10.9	\$14,306	2.1	1.2
Total	00-19	19,876	5.8	0.0	\$5,105	2.6	1.5
Total	20-24	32,779	9.5	0.0	\$15,757	3.1	1.6
Total	25-34	71,185	20.7	0.0	\$32,545	3.4	1.4
Total	35-44	60,243	17.5	0.0	\$44,643	3.5	1.3
Total	45-54	53,883	15.6	0.0	\$48,271	3.6	1.3
Total	55-64	51,275	14.9	0.0	\$48,447	3.6	1.2
Total	65-Up	17,832	5.2	0.0	\$31,164	3.3	1.1
Total	N/A	37,567	10.9	0.0	\$14,317	2.1	1.2
Total	Total	344,640	100.0	100.0	\$34,246	3.2	1.3

Note: Persons worked any time during the year.

Industry Determination: Based on the industry of employment in which the person made the most money in the year.

N/A: Represents persons with demographic data that are unavailable.

N/A = Nonresidents, individuals for whom demographic data are not available.

Source: Demographics of Persons Working in Wyoming by County, Industry, Age, & Gender, 2000-2017.

Research & Planning, Wyoming Department of Workforce Services.

Prepared by M. Moore, Research & Planning, WY DWS, 6/12/18.

Average Earnings by Age and Gender in the All Industry in 2017

Gender	Age Group	Number	Age Percent	Gender Percent	Average Annual Wage	Average Quarters Worked	Average Annual Employers
Women	00-19	9,702	7.0	0.0	\$4,999	2.7	1.6
Women	20-24	15,002	10.9	0.0	\$13,465	3.1	1.7
Women	25-34	30,053	21.8	0.0	\$27,063	3.4	1.5
Women	35-44	26,980	19.6	0.0	\$35,098	3.6	1.4
Women	45-54	23,961	17.4	0.0	\$38,456	3.6	1.3
Women	55-64	23,785	17.3	0.0	\$36,857	3.6	1.2
Women	65-Up	8,328	6.0	0.0	\$22,749	3.3	1.1
Women	N/A	29	0.0	0.0	\$21,101	2.3	1.1
Women	Total	137,840	100.0	40.8	\$29,011	3.4	1.4
Men	00-19	9,513	6.0	0.0	\$5,877	2.6	1.5
Men	20-24	15,801	10.0	0.0	\$18,902	3.1	1.7
Men	25-34	37,063	23.4	0.0	\$40,154	3.4	1.4
Men	35-44	32,639	20.6	0.0	\$56,546	3.5	1.3
Men	45-54	27,405	17.3	0.0	\$60,527	3.5	1.3
Men	55-64	26,253	16.6	0.0	\$60,669	3.5	1.2
Men	65-Up	9,926	6.3	0.0	\$40,210	3.3	1.1
Men	N/A	28	0.0	0.0	\$23,047	2.6	1.0
Men	Total	158,628	100.0	47.0	\$46,270	3.4	1.3
N/A	N/A	41,243	100.0	0.0	\$15,054	2.2	1.2
N/A	Total	41,243	100.0	12.2	\$15,054	2.2	1.2
Total	00-19	19,215	5.7	0.0	\$5,434	2.7	1.5
Total	20-24	30,803	9.1	0.0	\$16,254	3.1	1.7
Total	25-34	67,116	19.9	0.0	\$34,292	3.4	1.5
Total	35-44	59,619	17.7	0.0	\$46,840	3.5	1.3
Total	45-54	51,366	15.2	0.0	\$50,231	3.6	1.3
Total	55-64	50,038	14.8	0.0	\$49,350	3.6	1.2
Total	65-Up	18,254	5.4	0.0	\$32,244	3.3	1.1
Total	N/A	41,300	12.2	0.0	\$15,064	2.2	1.2
Total	Total	337,711	100.0	100.0	\$35,413	3.2	1.3

Note: Persons worked any time during the year.

Industry Determination: Based on the industry of employment in which the person made the most money in the year.

N/A: Represents persons with demographic data that are unavailable.

N/A = Nonresidents, individuals for whom demographic data are not available.

Source: Demographics of Persons Working in Wyoming by County, Industry, Age, & Gender, 2000-2017.

Research & Planning, Wyoming Department of Workforce Services.

Prepared by M. Moore, Research & Planning, WY DWS, 6/12/18.