

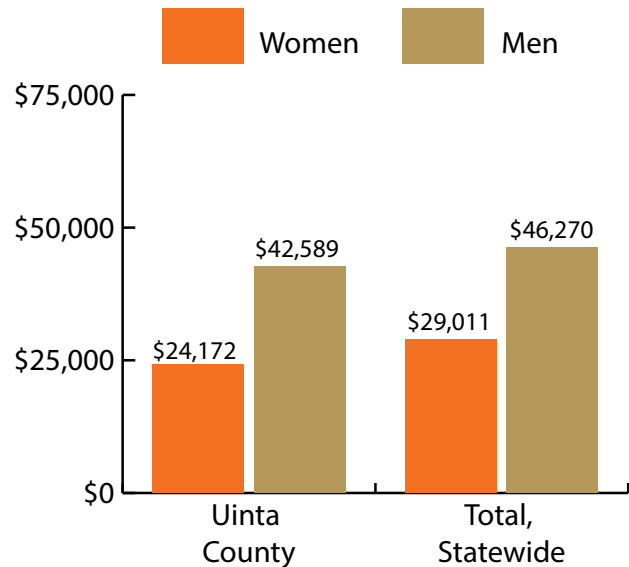
Uinta County at a Glance, 2017

Demographics of Persons Working in Wyoming by County, Industry, Age, & Gender, 2000-2017

Table: Total Number of Persons Working in Uinta County, WY, at Any Time by Gender and Age, 2016-2017

Gender	2016	2017	Change	
			N	%
Women	4,721	4,661	-60	-1.3
Men	4,816	4,605	-211	-4.4
Nonresidents	1,140	1,346	206	18.1
Total	10,677	10,612	-65	-0.6

Age	2016	2017	Change	
			N	%
00-19	781	771	-10	-1.3
20-24	1,009	962	-47	-4.7
25-34	2,040	1,921	-119	-5.8
35-44	1,973	1,976	3	0.2
45-54	1,626	1,582	-44	-2.7
55-64	1,650	1,587	-63	-3.8
65-Up	454	464	10	2.2
Nonresidents	1,144	1,349	205	17.9
Total	10,677	10,612	-65	-0.6



Women's Wages as % of Men's Wages

Uinta County: 56.8%

Total: 62.7%

Figure: Average Annual Wages by Gender, 2017

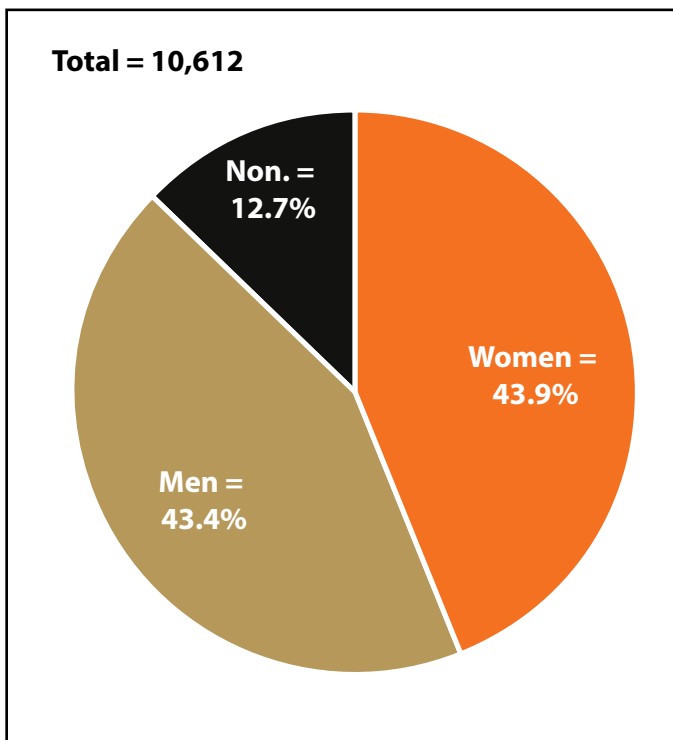


Figure: Persons Working by Gender, 2017

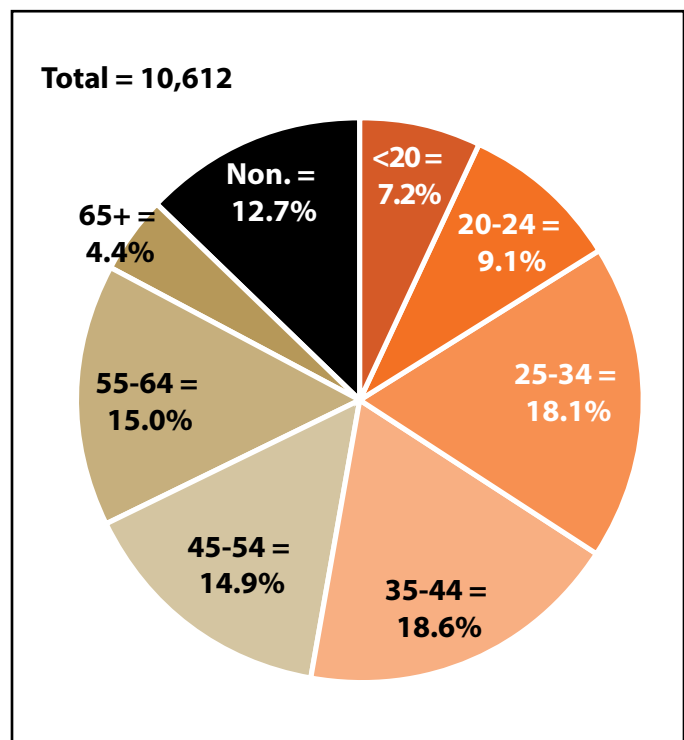


Figure: Persons Working by Age, 2017

Note: Nonresidents are individuals for whom demographic data are not available.

Source: Demographics of Persons Working in Wyoming by County, Industry, Age, & Gender, 2000-2017. Research & Planning, Wyoming Department of Workforce Services. Prepared by M. Moore, Research & Planning, WY DWS, 6/12/18.

Persons Working in Uinta County by Gender and Age, 2000-2017

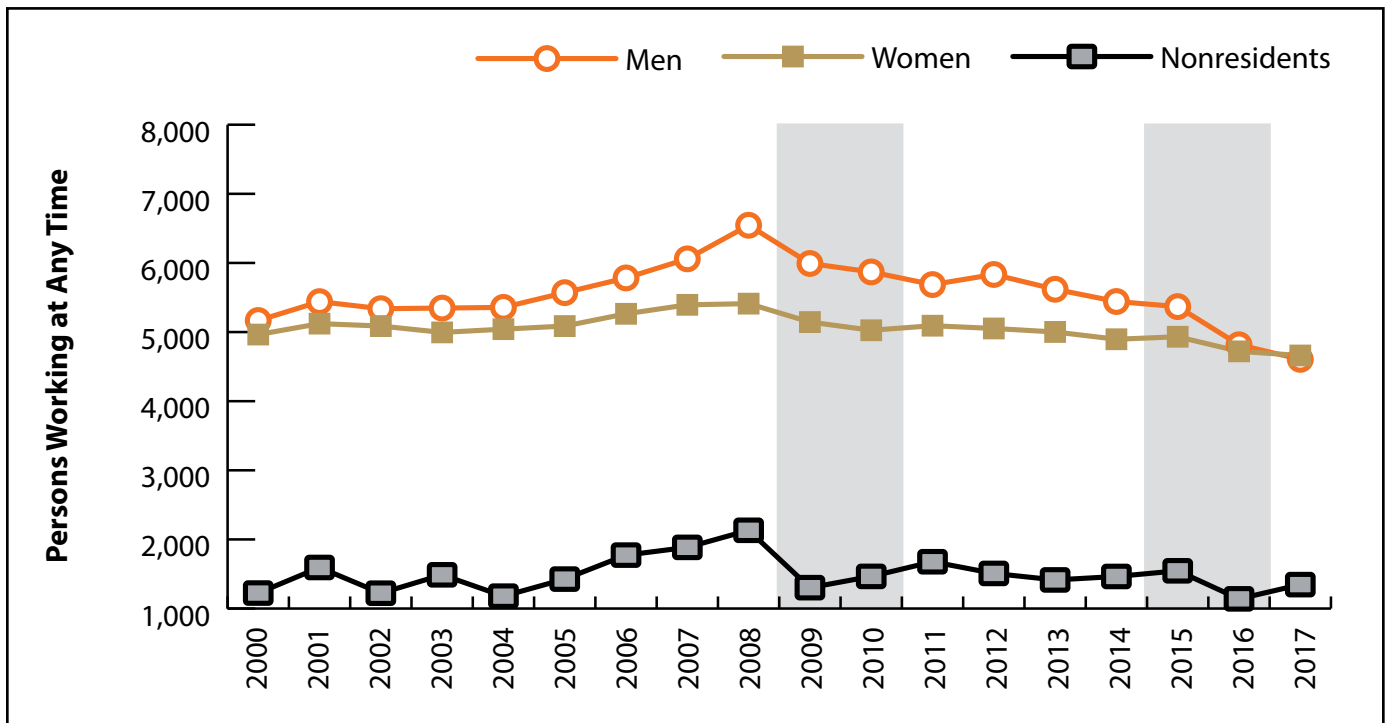


Figure: Persons Working in Uinta County at Any Time by Gender, 2000-2017

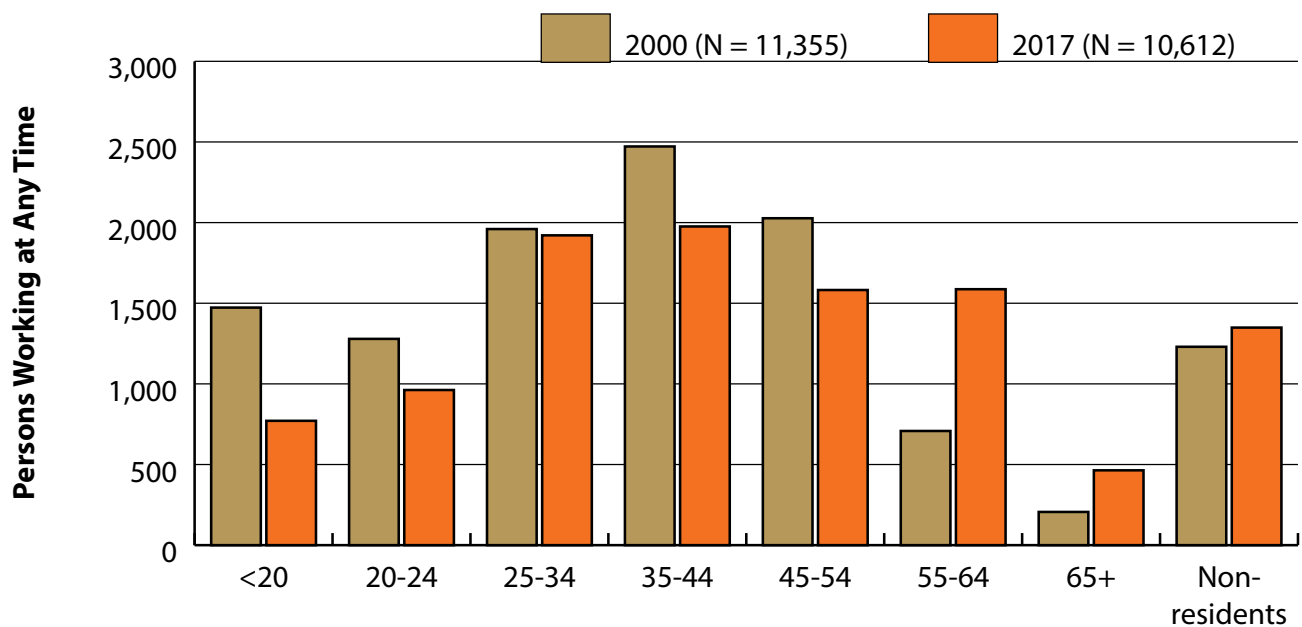


Figure: Persons Working in Uinta County at Any Time by Age, 2000-2017

Note: Nonresidents are individuals for whom demographic data are not available.
 Shaded areas indicate periods of economic downturn: 2009Q1-2010Q1 and 2015Q2-2016Q4.
 Source: Demographics of Persons Working in Wyoming by County, Industry, Age, & Gender, 2000-2017. Research & Planning, Wyoming Department of Workforce Services. Prepared by M. Moore, Research & Planning, WY DWS, 6/12/18.

Wages for Persons Working in Uinta County by Gender, 2000-2017

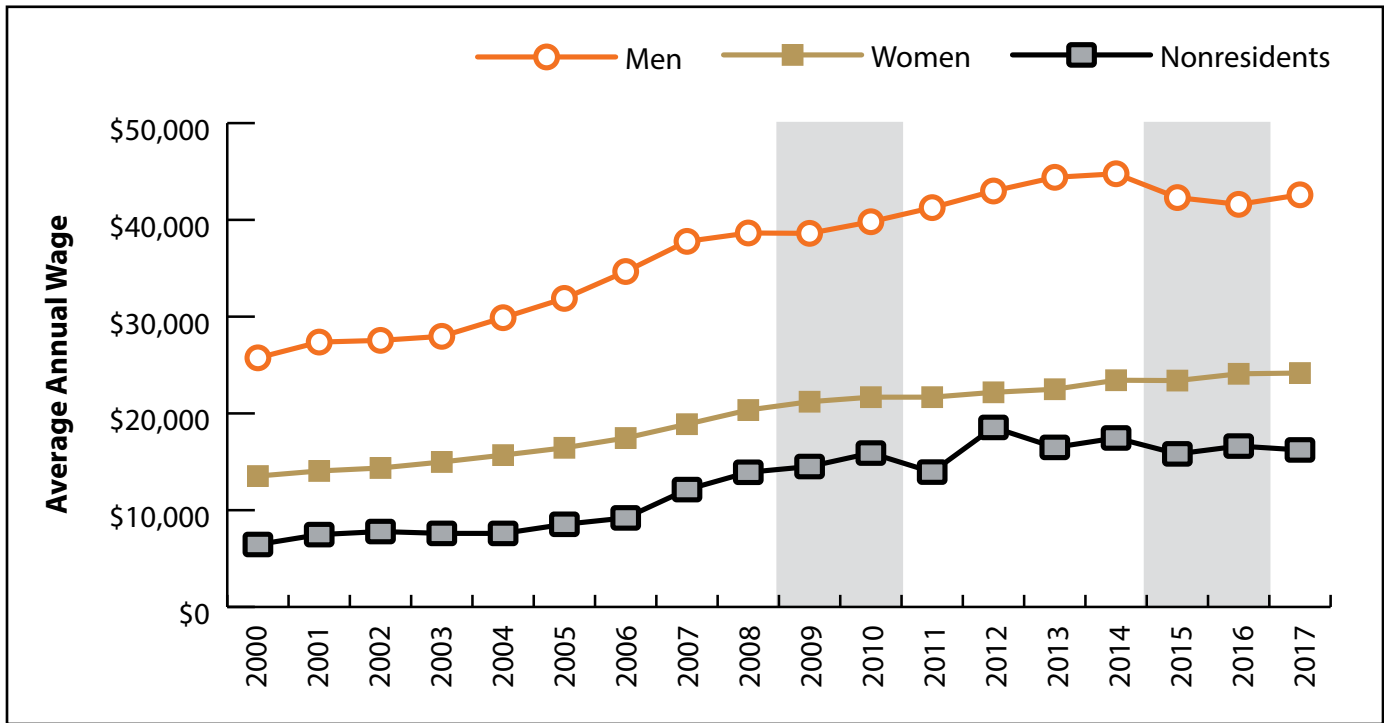


Figure: Average Annual Wage for Persons Working in Uinta County at Any Time by Age, 2000-2017

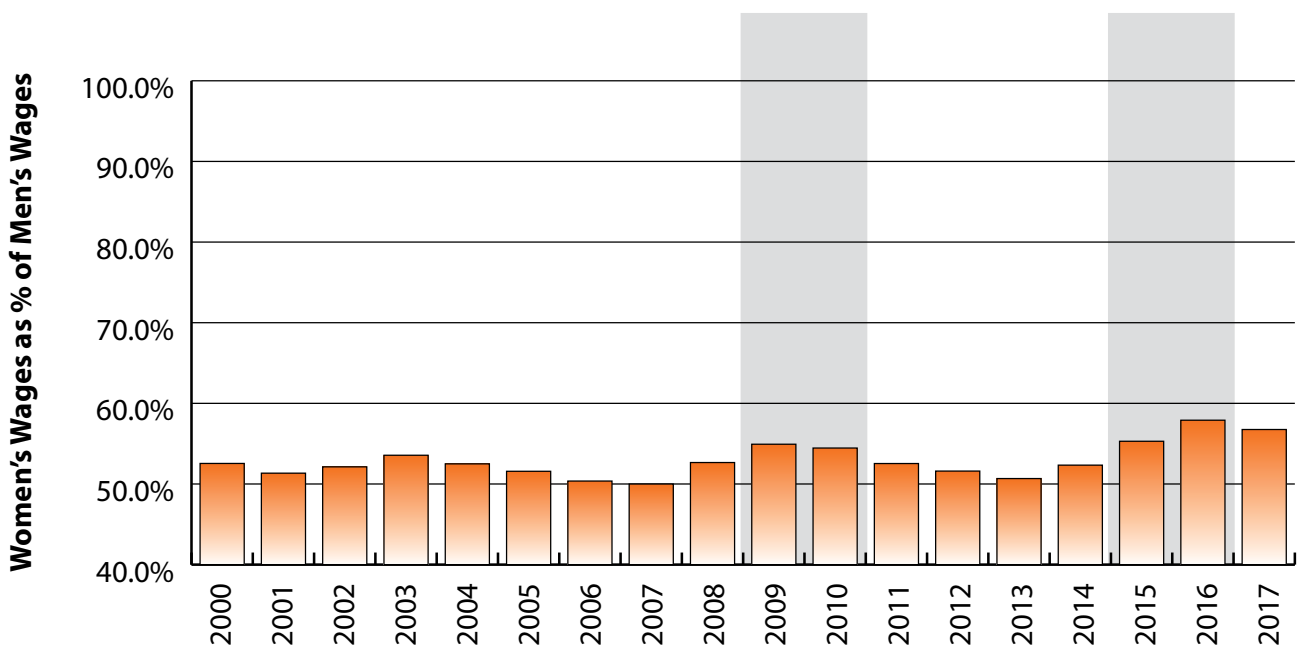


Figure: Women's Average Annual Wages as a Percent of Men's Wages for Persons Working in Uinta County at Any Time by Age, 2000-2017

Note: Nonresidents are individuals for whom demographic data are not available.

Shaded areas indicate periods of economic downturn: 2009Q1-2010Q1 and 2015Q2-2016Q4.

Source: Demographics of Persons Working in Wyoming by County, Industry, Age, & Gender, 2000-2017. Research & Planning, Wyoming Department of Workforce Services. Prepared by M. Moore, Research & Planning, WY DWS, 6/12/18.

Average Earnings by Age and Gender with Place of Work in Uinta County in 2000

Gender	Age Group	Number	Age Percent	Gender Percent	Average Annual Wage	Average Quarters Worked	Average Annual Employers
Women	00-19	693	14.0	0.0	\$3,209	2.7	1.7
Women	20-24	591	11.9	0.0	\$7,340	2.9	1.9
Women	25-34	913	18.4	0.0	\$12,656	3.2	1.6
Women	35-44	1,271	25.6	0.0	\$16,772	3.5	1.6
Women	45-54	1,053	21.2	0.0	\$19,483	3.6	1.5
Women	55-64	359	7.2	0.0	\$17,670	3.5	1.4
Women	65-Up	81	1.6	0.0	\$10,495	3.1	1.3
Women	N/A	3	0.1	0.0	\$2,485	1.0	1.0
Women	Total	4,964	100.0	43.7	\$13,527	3.3	1.6
Men	00-19	780	15.1	0.0	\$3,974	2.6	1.7
Men	20-24	688	13.3	0.0	\$12,137	2.9	2.0
Men	25-34	1,047	20.3	0.0	\$22,513	3.2	1.7
Men	35-44	1,201	23.2	0.0	\$36,292	3.5	1.5
Men	45-54	974	18.9	0.0	\$41,054	3.5	1.3
Men	55-64	349	6.8	0.0	\$34,840	3.4	1.3
Men	65-Up	125	2.4	0.0	\$17,775	3.0	1.2
Men	N/A	3	0.1	0.0	\$11,052	2.7	2.3
Men	Total	5,167	100.0	45.5	\$25,742	3.2	1.6
N/A	N/A	1,224	100.0	0.0	\$6,454	1.6	1.1
N/A	Total	1,224	100.0	10.8	\$6,454	1.6	1.1
Total	00-19	1,473	13.0	0.0	\$3,614	2.6	1.7
Total	20-24	1,279	11.3	0.0	\$9,920	2.9	1.9
Total	25-34	1,960	17.3	0.0	\$17,922	3.2	1.7
Total	35-44	2,472	21.8	0.0	\$26,255	3.5	1.5
Total	45-54	2,027	17.9	0.0	\$29,848	3.6	1.4
Total	55-64	708	6.2	0.0	\$26,134	3.4	1.3
Total	65-Up	206	1.8	0.0	\$14,912	3.0	1.3
Total	N/A	1,230	10.8	0.0	\$6,456	1.6	1.1
Total	Total	11,355	100.0	100.0	\$18,323	3.1	1.5

Note: Persons worked at any time during the year.

County Determination: Based on county of employment in which the person made the most money in the year.

N/A: Represents persons with demographic data that is unavailable.

N/A = Nonresidents, individuals for whom demographic data are not available.

Source: Demographics of Persons Working in Wyoming by County, Industry, Age, & Gender, 2000-2017.

Research & Planning, Wyoming Department of Workforce Services.

Prepared by M. Moore, Research & Planning, WY DWS, 6/12/18.

Average Earnings by Age and Gender with Place of Work in Uinta County in 2001

Gender	Age Group	Number	Age Percent	Gender Percent	Average Annual Wage	Average Quarters Worked	Average Annual Employers
Women	00-19	723	14.1	0.0	\$3,732	2.7	1.8
Women	20-24	603	11.8	0.0	\$7,566	3.0	1.9
Women	25-34	953	18.6	0.0	\$12,549	3.2	1.6
Women	35-44	1,242	24.2	0.0	\$17,494	3.4	1.5
Women	45-54	1,107	21.6	0.0	\$20,676	3.6	1.4
Women	55-64	398	7.8	0.0	\$18,108	3.5	1.3
Women	65-Up	93	1.8	0.0	\$9,777	3.0	1.2
Women	N/A	3	0.1	0.0	\$9,274	2.3	1.0
Women	Total	5,122	100.0	42.1	\$14,053	3.3	1.6
Men	00-19	775	14.2	0.0	\$4,419	2.7	1.8
Men	20-24	726	13.3	0.0	\$14,631	3.0	2.0
Men	25-34	1,129	20.8	0.0	\$24,392	3.2	1.7
Men	35-44	1,233	22.7	0.0	\$36,678	3.4	1.5
Men	45-54	1,047	19.2	0.0	\$42,120	3.5	1.3
Men	55-64	400	7.4	0.0	\$38,304	3.4	1.3
Men	65-Up	126	2.3	0.0	\$20,814	3.0	1.2
Men	N/A	4	0.1	0.0	\$11,617	1.8	1.0
Men	Total	5,440	100.0	44.8	\$27,371	3.2	1.6
N/A	N/A	1,594	100.0	0.0	\$7,475	1.6	1.1
N/A	Total	1,594	100.0	13.1	\$7,475	1.6	1.1
Total	00-19	1,498	12.3	0.0	\$4,087	2.7	1.8
Total	20-24	1,329	10.9	0.0	\$11,425	3.0	1.9
Total	25-34	2,082	17.1	0.0	\$18,971	3.2	1.7
Total	35-44	2,475	20.4	0.0	\$27,051	3.4	1.5
Total	45-54	2,154	17.7	0.0	\$31,099	3.5	1.4
Total	55-64	798	6.6	0.0	\$28,232	3.5	1.3
Total	65-Up	219	1.8	0.0	\$16,127	3.0	1.2
Total	N/A	1,601	13.2	0.0	\$7,489	1.6	1.1
Total	Total	12,156	100.0	100.0	\$19,151	3.0	1.5

Note: Persons worked at any time during the year.

County Determination: Based on county of employment in which the person made the most money in the year.

N/A: Represents persons with demographic data that is unavailable.

N/A = Nonresidents, individuals for whom demographic data are not available.

Source: Demographics of Persons Working in Wyoming by County, Industry, Age, & Gender, 2000-2017.

Research & Planning, Wyoming Department of Workforce Services.

Prepared by M. Moore, Research & Planning, WY DWS, 6/12/18.

Average Earnings by Age and Gender with Place of Work in Uinta County in 2002

Gender	Age Group	Number	Age Percent	Gender Percent	Average Annual Wage	Average Quarters Worked	Average Annual Employers
Women	00-19	655	12.9	0.0	\$3,335	2.7	1.7
Women	20-24	624	12.3	0.0	\$7,999	3.0	1.8
Women	25-34	971	19.1	0.0	\$12,783	3.2	1.5
Women	35-44	1,160	22.8	0.0	\$17,147	3.5	1.4
Women	45-54	1,166	22.9	0.0	\$20,777	3.6	1.3
Women	55-64	411	8.1	0.0	\$19,736	3.5	1.2
Women	65-Up	95	1.9	0.0	\$12,587	3.2	1.1
Women	N/A	5	0.1	0.0	\$5,898	2.0	1.0
Women	Total	5,087	100.0	43.7	\$14,359	3.3	1.5
Men	00-19	683	12.8	0.0	\$4,123	2.7	1.6
Men	20-24	721	13.5	0.0	\$13,503	3.0	1.8
Men	25-34	1,118	20.9	0.0	\$24,604	3.3	1.6
Men	35-44	1,148	21.5	0.0	\$35,126	3.4	1.4
Men	45-54	1,099	20.6	0.0	\$43,261	3.5	1.3
Men	55-64	436	8.2	0.0	\$36,525	3.4	1.2
Men	65-Up	128	2.4	0.0	\$23,870	3.2	1.2
Men	N/A	5	0.1	0.0	\$27,136	3.6	1.0
Men	Total	5,338	100.0	45.8	\$27,547	3.2	1.5
N/A	N/A	1,222	100.0	0.0	\$7,792	1.7	1.1
N/A	Total	1,222	100.0	10.5	\$7,792	1.7	1.1
Total	00-19	1,338	11.5	0.0	\$3,737	2.7	1.6
Total	20-24	1,345	11.5	0.0	\$10,949	3.0	1.8
Total	25-34	2,089	17.9	0.0	\$19,109	3.2	1.5
Total	35-44	2,308	19.8	0.0	\$26,090	3.4	1.4
Total	45-54	2,265	19.4	0.0	\$31,687	3.5	1.3
Total	55-64	847	7.3	0.0	\$28,378	3.5	1.2
Total	65-Up	223	1.9	0.0	\$19,064	3.2	1.2
Total	N/A	1,232	10.6	0.0	\$7,863	1.7	1.1
Total	Total	11,647	100.0	100.0	\$19,714	3.1	1.4

Note: Persons worked at any time during the year.

County Determination: Based on county of employment in which the person made the most money in the year.

N/A: Represents persons with demographic data that is unavailable.

N/A = Nonresidents, individuals for whom demographic data are not available.

Source: Demographics of Persons Working in Wyoming by County, Industry, Age, & Gender, 2000-2017.

Research & Planning, Wyoming Department of Workforce Services.

Prepared by M. Moore, Research & Planning, WY DWS, 6/12/18.

Average Earnings by Age and Gender with Place of Work in Uinta County in 2003

Gender	Age Group	Number	Age Percent	Gender Percent	Average Annual Wage	Average Quarters Worked	Average Annual Employers
Women	00-19	586	11.7	0.0	\$3,227	2.7	1.6
Women	20-24	595	11.9	0.0	\$8,085	3.0	1.7
Women	25-34	976	19.5	0.0	\$13,331	3.2	1.4
Women	35-44	1,069	21.4	0.0	\$17,451	3.5	1.4
Women	45-54	1,212	24.3	0.0	\$21,361	3.6	1.3
Women	55-64	447	8.9	0.0	\$20,627	3.5	1.2
Women	65-Up	106	2.1	0.0	\$12,284	3.3	1.2
Women	N/A	4	0.1	0.0	\$10,179	1.8	1.0
Women	Total	4,995	100.0	42.2	\$14,979	3.3	1.4
Men	00-19	614	11.5	0.0	\$4,237	2.6	1.6
Men	20-24	696	13.0	0.0	\$14,297	2.9	1.8
Men	25-34	1,108	20.7	0.0	\$24,628	3.2	1.6
Men	35-44	1,123	21.0	0.0	\$34,449	3.3	1.4
Men	45-54	1,175	22.0	0.0	\$42,035	3.4	1.3
Men	55-64	501	9.4	0.0	\$36,002	3.4	1.2
Men	65-Up	123	2.3	0.0	\$27,862	3.2	1.1
Men	N/A	7	0.1	0.0	\$20,678	2.9	1.0
Men	Total	5,347	100.0	45.2	\$27,964	3.2	1.5
N/A	N/A	1,488	100.0	0.0	\$7,602	1.6	1.1
N/A	Total	1,488	100.0	12.6	\$7,602	1.6	1.1
Total	00-19	1,200	10.1	0.0	\$3,744	2.7	1.6
Total	20-24	1,291	10.9	0.0	\$11,434	2.9	1.8
Total	25-34	2,084	17.6	0.0	\$19,337	3.2	1.5
Total	35-44	2,192	18.5	0.0	\$26,159	3.4	1.4
Total	45-54	2,387	20.2	0.0	\$31,538	3.5	1.3
Total	55-64	948	8.0	0.0	\$28,752	3.4	1.2
Total	65-Up	229	1.9	0.0	\$20,651	3.3	1.1
Total	N/A	1,499	12.7	0.0	\$7,670	1.6	1.1
Total	Total	11,830	100.0	100.0	\$19,920	3.0	1.4

Note: Persons worked at any time during the year.

County Determination: Based on county of employment in which the person made the most money in the year.

N/A: Represents persons with demographic data that is unavailable.

N/A = Nonresidents, individuals for whom demographic data are not available.

Source: Demographics of Persons Working in Wyoming by County, Industry, Age, & Gender, 2000-2017.

Research & Planning, Wyoming Department of Workforce Services.

Prepared by M. Moore, Research & Planning, WY DWS, 6/12/18.

Average Earnings by Age and Gender with Place of Work in Uinta County in 2004

Gender	Age Group	Number	Age Percent	Gender Percent	Average Annual Wage	Average Quarters Worked	Average Annual Employers
Women	00-19	601	11.9	0.0	\$3,401	2.7	1.6
Women	20-24	589	11.7	0.0	\$8,599	3.0	1.7
Women	25-34	987	19.6	0.0	\$13,874	3.2	1.5
Women	35-44	1,004	19.9	0.0	\$18,076	3.5	1.4
Women	45-54	1,243	24.7	0.0	\$22,153	3.6	1.3
Women	55-64	499	9.9	0.0	\$22,112	3.6	1.2
Women	65-Up	117	2.3	0.0	\$13,550	3.2	1.2
Women	N/A	2	0.0	0.0	\$4,222	1.5	1.0
Women	Total	5,042	100.0	43.5	\$15,691	3.3	1.4
Men	00-19	599	11.2	0.0	\$4,454	2.6	1.6
Men	20-24	684	12.8	0.0	\$15,804	3.0	1.9
Men	25-34	1,144	21.4	0.0	\$26,426	3.2	1.6
Men	35-44	1,082	20.2	0.0	\$35,823	3.4	1.4
Men	45-54	1,197	22.3	0.0	\$44,460	3.5	1.3
Men	55-64	510	9.5	0.0	\$40,898	3.5	1.3
Men	65-Up	136	2.5	0.0	\$25,140	3.3	1.2
Men	N/A	5	0.1	0.0	\$31,112	3.6	1.2
Men	Total	5,357	100.0	46.3	\$29,890	3.2	1.5
N/A	N/A	1,179	100.0	0.0	\$7,600	1.8	1.1
N/A	Total	1,179	100.0	10.2	\$7,600	1.8	1.1
Total	00-19	1,200	10.4	0.0	\$3,926	2.7	1.6
Total	20-24	1,273	11.0	0.0	\$12,471	3.0	1.8
Total	25-34	2,131	18.4	0.0	\$20,612	3.2	1.5
Total	35-44	2,086	18.0	0.0	\$27,282	3.4	1.4
Total	45-54	2,440	21.1	0.0	\$33,096	3.5	1.3
Total	55-64	1,009	8.7	0.0	\$31,607	3.5	1.3
Total	65-Up	253	2.2	0.0	\$19,780	3.3	1.2
Total	N/A	1,186	10.2	0.0	\$7,693	1.8	1.1
Total	Total	11,578	100.0	100.0	\$21,437	3.1	1.4

Note: Persons worked at any time during the year.

County Determination: Based on county of employment in which the person made the most money in the year.

N/A: Represents persons with demographic data that is unavailable.

N/A = Nonresidents, individuals for whom demographic data are not available.

Source: Demographics of Persons Working in Wyoming by County, Industry, Age, & Gender, 2000-2017.

Research & Planning, Wyoming Department of Workforce Services.

Prepared by M. Moore, Research & Planning, WY DWS, 6/12/18.

Average Earnings by Age and Gender with Place of Work in Uinta County in 2005

Gender	Age Group	Number	Age Percent	Gender Percent	Average Annual Wage	Average Quarters Worked	Average Annual Employers
Women	00-19	614	12.1	0.0	\$3,664	2.8	1.8
Women	20-24	570	11.2	0.0	\$8,278	2.9	1.8
Women	25-34	1,006	19.8	0.0	\$14,341	3.2	1.5
Women	35-44	974	19.1	0.0	\$19,217	3.5	1.5
Women	45-54	1,241	24.4	0.0	\$23,577	3.7	1.4
Women	55-64	553	10.9	0.0	\$22,829	3.6	1.3
Women	65-Up	127	2.5	0.0	\$13,069	3.2	1.2
Women	N/A	2	0.0	0.0	\$223	1.0	1.0
Women	Total	5,087	100.0	42.1	\$16,445	3.3	1.5
Men	00-19	662	11.9	0.0	\$5,028	2.6	1.8
Men	20-24	704	12.6	0.0	\$18,143	3.0	2.0
Men	25-34	1,176	21.1	0.0	\$30,099	3.3	1.6
Men	35-44	1,071	19.2	0.0	\$36,627	3.4	1.4
Men	45-54	1,217	21.8	0.0	\$46,919	3.5	1.3
Men	55-64	572	10.3	0.0	\$44,172	3.4	1.3
Men	65-Up	163	2.9	0.0	\$26,811	3.3	1.2
Men	N/A	5	0.1	0.0	\$27,506	2.8	1.0
Men	Total	5,570	100.0	46.1	\$31,885	3.2	1.5
N/A	N/A	1,426	100.0	0.0	\$8,542	1.9	1.2
N/A	Total	1,426	100.0	11.8	\$8,542	1.9	1.2
Total	00-19	1,276	10.6	0.0	\$4,372	2.7	1.8
Total	20-24	1,274	10.5	0.0	\$13,729	3.0	1.9
Total	25-34	2,182	18.1	0.0	\$22,834	3.2	1.6
Total	35-44	2,045	16.9	0.0	\$28,335	3.4	1.4
Total	45-54	2,458	20.3	0.0	\$35,134	3.6	1.3
Total	55-64	1,125	9.3	0.0	\$33,681	3.5	1.3
Total	65-Up	290	2.4	0.0	\$20,793	3.2	1.2
Total	N/A	1,433	11.9	0.0	\$8,597	1.9	1.2
Total	Total	12,083	100.0	100.0	\$22,630	3.1	1.5

Note: Persons worked at any time during the year.

County Determination: Based on county of employment in which the person made the most money in the year.

N/A: Represents persons with demographic data that is unavailable.

N/A = Nonresidents, individuals for whom demographic data are not available.

Source: Demographics of Persons Working in Wyoming by County, Industry, Age, & Gender, 2000-2017.

Research & Planning, Wyoming Department of Workforce Services.

Prepared by M. Moore, Research & Planning, WY DWS, 6/12/18.

Average Earnings by Age and Gender with Place of Work in Uinta County in 2006

Gender	Age Group	Number	Age Percent	Gender Percent	Average Annual Wage	Average Quarters Worked	Average Annual Employers
Women	00-19	650	12.3	0.0	\$4,129	2.8	1.8
Women	20-24	556	10.6	0.0	\$9,302	3.0	1.8
Women	25-34	1,045	19.9	0.0	\$15,138	3.2	1.6
Women	35-44	982	18.7	0.0	\$20,812	3.5	1.5
Women	45-54	1,289	24.5	0.0	\$24,243	3.6	1.4
Women	55-64	611	11.6	0.0	\$24,006	3.6	1.3
Women	65-Up	129	2.5	0.0	\$14,497	3.5	1.2
Women	N/A	2	0.0	0.0	\$344	1.5	1.0
Women	Total	5,264	100.0	41.1	\$17,458	3.3	1.5
Men	00-19	716	12.4	0.0	\$5,285	2.6	1.7
Men	20-24	727	12.6	0.0	\$20,612	3.0	1.9
Men	25-34	1,266	21.9	0.0	\$34,387	3.2	1.6
Men	35-44	1,082	18.7	0.0	\$40,175	3.3	1.4
Men	45-54	1,224	21.2	0.0	\$50,332	3.5	1.3
Men	55-64	581	10.0	0.0	\$48,197	3.5	1.2
Men	65-Up	182	3.1	0.0	\$27,119	3.4	1.3
Men	N/A	5	0.1	0.0	\$27,893	2.4	1.2
Men	Total	5,783	100.0	45.1	\$34,663	3.2	1.5
N/A	N/A	1,773	100.0	0.0	\$9,202	1.8	1.2
N/A	Total	1,773	100.0	13.8	\$9,202	1.8	1.2
Total	00-19	1,366	10.7	0.0	\$4,735	2.7	1.7
Total	20-24	1,283	10.0	0.0	\$15,711	3.0	1.9
Total	25-34	2,311	18.0	0.0	\$25,683	3.2	1.6
Total	35-44	2,064	16.1	0.0	\$30,962	3.4	1.5
Total	45-54	2,513	19.6	0.0	\$36,950	3.5	1.4
Total	55-64	1,192	9.3	0.0	\$35,797	3.5	1.3
Total	65-Up	311	2.4	0.0	\$21,884	3.4	1.2
Total	N/A	1,780	13.9	0.0	\$9,245	1.8	1.2
Total	Total	12,820	100.0	100.0	\$24,077	3.1	1.5

Note: Persons worked at any time during the year.

County Determination: Based on county of employment in which the person made the most money in the year.

N/A: Represents persons with demographic data that is unavailable.

N/A = Nonresidents, individuals for whom demographic data are not available.

Source: Demographics of Persons Working in Wyoming by County, Industry, Age, & Gender, 2000-2017.

Research & Planning, Wyoming Department of Workforce Services.

Prepared by M. Moore, Research & Planning, WY DWS, 6/12/18.

Average Earnings by Age and Gender with Place of Work in Uinta County in 2007

Gender	Age Group	Number	Age Percent	Gender Percent	Average Annual Wage	Average Quarters Worked	Average Annual Employers
Women	00-19	670	12.4	0.0	\$4,378	2.7	1.7
Women	20-24	588	10.9	0.0	\$10,311	3.0	1.9
Women	25-34	1,090	20.2	0.0	\$15,867	3.2	1.6
Women	35-44	1,001	18.6	0.0	\$22,461	3.5	1.4
Women	45-54	1,247	23.1	0.0	\$26,969	3.6	1.4
Women	55-64	650	12.1	0.0	\$26,362	3.6	1.2
Women	65-Up	148	2.7	0.0	\$15,800	3.3	1.3
Women	Total	5,394	100.0	40.4	\$18,887	3.3	1.5
Men	00-19	721	11.9	0.0	\$5,627	2.7	1.6
Men	20-24	759	12.5	0.0	\$21,638	2.9	1.8
Men	25-34	1,372	22.6	0.0	\$37,512	3.3	1.5
Men	35-44	1,093	18.0	0.0	\$45,560	3.3	1.3
Men	45-54	1,266	20.9	0.0	\$53,597	3.5	1.3
Men	55-64	638	10.5	0.0	\$51,892	3.5	1.2
Men	65-Up	206	3.4	0.0	\$29,546	3.2	1.3
Men	N/A	4	0.1	0.0	\$26,952	2.5	1.3
Men	Total	6,059	100.0	45.4	\$37,778	3.2	1.4
N/A	N/A	1,885	100.0	0.0	\$12,127	2.0	1.2
N/A	Total	1,885	100.0	14.1	\$12,127	2.0	1.2
Total	00-19	1,391	10.4	0.0	\$5,025	2.7	1.7
Total	20-24	1,347	10.1	0.0	\$16,693	3.0	1.8
Total	25-34	2,462	18.5	0.0	\$27,929	3.2	1.5
Total	35-44	2,094	15.7	0.0	\$34,518	3.4	1.4
Total	45-54	2,513	18.8	0.0	\$40,384	3.5	1.3
Total	55-64	1,288	9.7	0.0	\$39,008	3.5	1.2
Total	65-Up	354	2.7	0.0	\$23,799	3.3	1.3
Total	N/A	1,889	14.2	0.0	\$12,158	2.0	1.2
Total	Total	13,338	100.0	100.0	\$26,513	3.1	1.4

Note: Persons worked at any time during the year.

County Determination: Based on county of employment in which the person made the most money in the year.

N/A: Represents persons with demographic data that is unavailable.

N/A = Nonresidents, individuals for whom demographic data are not available.

Source: Demographics of Persons Working in Wyoming by County, Industry, Age, & Gender, 2000-2017.
Research & Planning, Wyoming Department of Workforce Services.

Prepared by M. Moore, Research & Planning, WY DWS, 6/12/18.

Average Earnings by Age and Gender with Place of Work in Uinta County in 2008

Gender	Age Group	Number	Age Percent	Gender Percent	Average Annual Wage	Average Quarters Worked	Average Annual Employers
Women	00-19	631	11.7	0.0	\$4,853	2.7	1.7
Women	20-24	610	11.3	0.0	\$11,182	3.1	1.7
Women	25-34	1,096	20.3	0.0	\$17,450	3.2	1.5
Women	35-44	1,002	18.5	0.0	\$23,504	3.5	1.4
Women	45-54	1,227	22.7	0.0	\$28,570	3.7	1.4
Women	55-64	696	12.9	0.0	\$28,514	3.6	1.3
Women	65-Up	148	2.7	0.0	\$17,972	3.5	1.2
Women	N/A	1	0.0	0.0	\$672	1.0	1.0
Women	Total	5,411	100.0	38.4	\$20,351	3.4	1.5
Men	00-19	710	10.8	0.0	\$5,946	2.6	1.6
Men	20-24	818	12.5	0.0	\$21,774	3.0	1.8
Men	25-34	1,557	23.8	0.0	\$39,116	3.2	1.5
Men	35-44	1,241	19.0	0.0	\$45,275	3.3	1.4
Men	45-54	1,278	19.5	0.0	\$52,119	3.4	1.3
Men	55-64	735	11.2	0.0	\$55,389	3.4	1.2
Men	65-Up	203	3.1	0.0	\$31,050	3.3	1.2
Men	N/A	3	0.0	0.0	\$61,143	4.0	1.0
Men	Total	6,545	100.0	46.5	\$38,645	3.2	1.4
N/A	N/A	2,132	100.0	0.0	\$13,917	2.1	1.2
N/A	Total	2,132	100.0	15.1	\$13,917	2.1	1.2
Total	00-19	1,341	9.5	0.0	\$5,432	2.7	1.6
Total	20-24	1,428	10.1	0.0	\$17,249	3.0	1.8
Total	25-34	2,653	18.8	0.0	\$30,165	3.2	1.5
Total	35-44	2,243	15.9	0.0	\$35,549	3.4	1.4
Total	45-54	2,505	17.8	0.0	\$40,584	3.5	1.3
Total	55-64	1,431	10.2	0.0	\$42,318	3.5	1.2
Total	65-Up	351	2.5	0.0	\$25,536	3.4	1.2
Total	N/A	2,136	15.2	0.0	\$13,977	2.1	1.2
Total	Total	14,088	100.0	100.0	\$27,876	3.1	1.4

Note: Persons worked at any time during the year.

County Determination: Based on county of employment in which the person made the most money in the year.

N/A: Represents persons with demographic data that is unavailable.

N/A = Nonresidents, individuals for whom demographic data are not available.

Source: Demographics of Persons Working in Wyoming by County, Industry, Age, & Gender, 2000-2017.

Research & Planning, Wyoming Department of Workforce Services.

Prepared by M. Moore, Research & Planning, WY DWS, 6/12/18.

Average Earnings by Age and Gender with Place of Work in Uinta County in 2009

Gender	Age Group	Number	Age Percent	Gender Percent	Average Annual Wage	Average Quarters Worked	Average Annual Employers
Women	00-19	506	9.8	0.0	\$4,046	2.7	1.3
Women	20-24	579	11.3	0.0	\$10,937	3.1	1.5
Women	25-34	1,028	20.0	0.0	\$18,644	3.3	1.4
Women	35-44	986	19.2	0.0	\$23,449	3.5	1.3
Women	45-54	1,160	22.5	0.0	\$29,962	3.7	1.2
Women	55-64	728	14.1	0.0	\$28,481	3.7	1.2
Women	65-Up	158	3.1	0.0	\$18,716	3.4	1.1
Women	Total	5,145	100.0	41.4	\$21,208	3.4	1.3
Men	00-19	512	8.5	0.0	\$5,464	2.6	1.3
Men	20-24	715	11.9	0.0	\$17,779	2.9	1.4
Men	25-34	1,499	25.0	0.0	\$36,628	3.3	1.3
Men	35-44	1,147	19.1	0.0	\$45,234	3.3	1.2
Men	45-54	1,168	19.5	0.0	\$51,844	3.5	1.2
Men	55-64	752	12.6	0.0	\$56,044	3.5	1.2
Men	65-Up	197	3.3	0.0	\$31,656	3.3	1.1
Men	N/A	2	0.0	0.0	\$53,397	4.0	1.5
Men	Total	5,992	100.0	48.2	\$38,608	3.2	1.3
N/A	N/A	1,302	100.0	0.0	\$14,511	2.2	1.1
N/A	Total	1,302	100.0	10.5	\$14,511	2.2	1.1
Total	00-19	1,018	8.2	0.0	\$4,759	2.6	1.3
Total	20-24	1,294	10.4	0.0	\$14,717	3.0	1.5
Total	25-34	2,527	20.3	0.0	\$29,312	3.3	1.3
Total	35-44	2,133	17.1	0.0	\$35,164	3.4	1.3
Total	45-54	2,328	18.7	0.0	\$40,941	3.6	1.2
Total	55-64	1,480	11.9	0.0	\$42,486	3.6	1.2
Total	65-Up	355	2.9	0.0	\$25,897	3.3	1.1
Total	N/A	1,304	10.5	0.0	\$14,571	2.2	1.1
Total	Total	12,439	100.0	100.0	\$28,889	3.2	1.3

Note: Persons worked at any time during the year.

County Determination: Based on county of employment in which the person made the most money in the year.

N/A: Represents persons with demographic data that is unavailable.

N/A = Nonresidents, individuals for whom demographic data are not available.

Source: Demographics of Persons Working in Wyoming by County, Industry, Age, & Gender, 2000-2017.
Research & Planning, Wyoming Department of Workforce Services.

Prepared by M. Moore, Research & Planning, WY DWS, 6/12/18.

Average Earnings by Age and Gender with Place of Work in Uinta County in 2010

Gender	Age Group	Number	Age Percent	Gender Percent	Average Annual Wage	Average Quarters Worked	Average Annual Employers
Women	00-19	468	9.3	0.0	\$4,097	2.7	1.4
Women	20-24	551	11.0	0.0	\$11,532	3.0	1.5
Women	25-34	1,008	20.1	0.0	\$17,938	3.2	1.4
Women	35-44	959	19.1	0.0	\$24,350	3.5	1.3
Women	45-54	1,115	22.2	0.0	\$29,268	3.6	1.3
Women	55-64	773	15.4	0.0	\$30,747	3.7	1.2
Women	65-Up	151	3.0	0.0	\$18,845	3.6	1.1
Women	N/A	1	0.0	0.0	\$851	1.0	1.0
Women	Total	5,026	100.0	40.7	\$21,678	3.4	1.3
Men	00-19	433	7.4	0.0	\$5,340	2.5	1.3
Men	20-24	654	11.1	0.0	\$17,723	2.9	1.4
Men	25-34	1,494	25.5	0.0	\$37,382	3.2	1.4
Men	35-44	1,135	19.3	0.0	\$45,446	3.3	1.3
Men	45-54	1,212	20.6	0.0	\$52,979	3.4	1.2
Men	55-64	751	12.8	0.0	\$55,797	3.5	1.2
Men	65-Up	189	3.2	0.0	\$32,251	3.3	1.1
Men	N/A	2	0.0	0.0	\$58,037	4.0	1.0
Men	Total	5,870	100.0	47.5	\$39,806	3.2	1.3
N/A	N/A	1,465	100.0	0.0	\$15,902	2.1	1.1
N/A	Total	1,465	100.0	11.9	\$15,902	2.1	1.1
Total	00-19	901	7.3	0.0	\$4,694	2.6	1.4
Total	20-24	1,205	9.7	0.0	\$14,892	2.9	1.5
Total	25-34	2,502	20.2	0.0	\$29,548	3.2	1.4
Total	35-44	2,094	16.9	0.0	\$35,785	3.4	1.3
Total	45-54	2,327	18.8	0.0	\$41,618	3.5	1.2
Total	55-64	1,524	12.3	0.0	\$43,091	3.6	1.2
Total	65-Up	340	2.8	0.0	\$26,297	3.4	1.1
Total	N/A	1,468	11.9	0.0	\$15,949	2.1	1.1
Total	Total	12,361	100.0	100.0	\$29,602	3.2	1.3

Note: Persons worked at any time during the year.

County Determination: Based on county of employment in which the person made the most money in the year.

N/A: Represents persons with demographic data that is unavailable.

N/A = Nonresidents, individuals for whom demographic data are not available.

Source: Demographics of Persons Working in Wyoming by County, Industry, Age, & Gender, 2000-2017.

Research & Planning, Wyoming Department of Workforce Services.

Prepared by M. Moore, Research & Planning, WY DWS, 6/12/18.

Average Earnings by Age and Gender with Place of Work in Uinta County in 2011

Gender	Age Group	Number	Age Percent	Gender Percent	Average Annual Wage	Average Quarters Worked	Average Annual Employers
Women	00-19	471	9.2	0.0	\$4,326	2.6	1.4
Women	20-24	582	11.4	0.0	\$11,142	2.9	1.5
Women	25-34	994	19.5	0.0	\$18,399	3.2	1.4
Women	35-44	992	19.5	0.0	\$25,029	3.5	1.3
Women	45-54	1,054	20.7	0.0	\$29,245	3.6	1.3
Women	55-64	824	16.2	0.0	\$29,745	3.6	1.2
Women	65-Up	175	3.4	0.0	\$19,516	3.3	1.1
Women	Total	5,092	100.0	40.9	\$21,679	3.3	1.3
Men	00-19	450	7.9	0.0	\$5,177	2.5	1.4
Men	20-24	621	10.9	0.0	\$18,674	2.9	1.5
Men	25-34	1,398	24.6	0.0	\$40,248	3.3	1.3
Men	35-44	1,128	19.8	0.0	\$48,085	3.3	1.3
Men	45-54	1,116	19.6	0.0	\$52,838	3.4	1.2
Men	55-64	774	13.6	0.0	\$57,551	3.6	1.2
Men	65-Up	198	3.5	0.0	\$33,417	3.3	1.1
Men	N/A	2	0.0	0.0	\$55,063	4.0	1.5
Men	Total	5,687	100.0	45.7	\$41,264	3.3	1.3
N/A	N/A	1,677	100.0	0.0	\$13,936	2.0	1.1
N/A	Total	1,677	100.0	13.5	\$13,936	2.0	1.1
Total	00-19	921	7.4	0.0	\$4,742	2.6	1.4
Total	20-24	1,203	9.7	0.0	\$15,030	2.9	1.5
Total	25-34	2,392	19.2	0.0	\$31,169	3.3	1.4
Total	35-44	2,120	17.0	0.0	\$37,296	3.4	1.3
Total	45-54	2,170	17.4	0.0	\$41,378	3.5	1.2
Total	55-64	1,598	12.8	0.0	\$43,213	3.6	1.2
Total	65-Up	373	3.0	0.0	\$26,895	3.3	1.1
Total	N/A	1,679	13.5	0.0	\$13,985	2.0	1.1
Total	Total	12,456	100.0	100.0	\$29,579	3.1	1.3

Note: Persons worked at any time during the year.

County Determination: Based on county of employment in which the person made the most money in the year.

N/A: Represents persons with demographic data that is unavailable.

N/A = Nonresidents, individuals for whom demographic data are not available.

Source: Demographics of Persons Working in Wyoming by County, Industry, Age, & Gender, 2000-2017.
Research & Planning, Wyoming Department of Workforce Services.

Prepared by M. Moore, Research & Planning, WY DWS, 6/12/18.

Average Earnings by Age and Gender with Place of Work in Uinta County in 2012

Gender	Age Group	Number	Age Percent	Gender Percent	Average Annual Wage	Average Quarters Worked	Average Annual Employers
Women	00-19	482	9.5	0.0	\$4,490	2.7	1.4
Women	20-24	553	10.9	0.0	\$11,164	3.0	1.6
Women	25-34	1,012	20.0	0.0	\$19,377	3.3	1.4
Women	35-44	1,016	20.1	0.0	\$24,785	3.5	1.3
Women	45-54	975	19.3	0.0	\$30,594	3.6	1.3
Women	55-64	832	16.5	0.0	\$30,765	3.7	1.2
Women	65-Up	181	3.6	0.0	\$19,292	3.4	1.1
Women	N/A	1	0.0	0.0	\$9,942	2.0	1.0
Women	Total	5,052	100.0	40.8	\$22,180	3.4	1.3
Men	00-19	479	8.2	0.0	\$5,937	2.7	1.5
Men	20-24	659	11.3	0.0	\$19,924	3.0	1.6
Men	25-34	1,408	24.1	0.0	\$42,405	3.3	1.3
Men	35-44	1,179	20.2	0.0	\$51,550	3.4	1.3
Men	45-54	1,062	18.2	0.0	\$54,328	3.4	1.2
Men	55-64	833	14.3	0.0	\$59,037	3.5	1.2
Men	65-Up	211	3.6	0.0	\$34,480	3.3	1.1
Men	N/A	2	0.0	0.0	\$57,253	4.0	1.0
Men	Total	5,833	100.0	47.1	\$42,983	3.3	1.3
N/A	N/A	1,508	100.0	0.0	\$18,552	2.2	1.1
N/A	Total	1,508	100.0	12.2	\$18,552	2.2	1.1
Total	00-19	961	7.8	0.0	\$5,211	2.7	1.5
Total	20-24	1,212	9.8	0.0	\$15,927	3.0	1.6
Total	25-34	2,420	19.5	0.0	\$32,775	3.3	1.3
Total	35-44	2,195	17.7	0.0	\$39,161	3.5	1.3
Total	45-54	2,037	16.4	0.0	\$42,968	3.5	1.2
Total	55-64	1,665	13.4	0.0	\$44,909	3.6	1.2
Total	65-Up	392	3.2	0.0	\$27,467	3.3	1.1
Total	N/A	1,511	12.2	0.0	\$18,597	2.2	1.1
Total	Total	12,393	100.0	100.0	\$31,530	3.2	1.3

Note: Persons worked at any time during the year.

County Determination: Based on county of employment in which the person made the most money in the year.

N/A: Represents persons with demographic data that is unavailable.

N/A = Nonresidents, individuals for whom demographic data are not available.

Source: Demographics of Persons Working in Wyoming by County, Industry, Age, & Gender, 2000-2017.

Research & Planning, Wyoming Department of Workforce Services.

Prepared by M. Moore, Research & Planning, WY DWS, 6/12/18.

Average Earnings by Age and Gender with Place of Work in Uinta County in 2013

Gender	Age Group	Number	Age Percent	Gender Percent	Average Annual Wage	Average Quarters Worked	Average Annual Employers
Women	00-19	446	8.9	0.0	\$4,250	2.7	1.4
Women	20-24	527	10.5	0.0	\$11,017	3.0	1.6
Women	25-34	1,049	21.0	0.0	\$18,863	3.3	1.4
Women	35-44	1,026	20.5	0.0	\$25,752	3.5	1.3
Women	45-54	923	18.5	0.0	\$30,691	3.6	1.3
Women	55-64	847	16.9	0.0	\$31,427	3.6	1.2
Women	65-Up	183	3.7	0.0	\$19,989	3.4	1.1
Women	Total	5,001	100.0	41.6	\$22,498	3.4	1.3
Men	00-19	426	7.6	0.0	\$5,739	2.6	1.4
Men	20-24	647	11.5	0.0	\$19,496	3.0	1.6
Men	25-34	1,367	24.3	0.0	\$41,429	3.3	1.3
Men	35-44	1,165	20.7	0.0	\$54,610	3.4	1.3
Men	45-54	972	17.3	0.0	\$57,003	3.4	1.2
Men	55-64	824	14.7	0.0	\$61,146	3.5	1.1
Men	65-Up	216	3.8	0.0	\$38,198	3.4	1.1
Men	N/A	2	0.0	0.0	\$57,319	4.0	1.0
Men	Total	5,619	100.0	46.7	\$44,397	3.3	1.3
N/A	N/A	1,414	100.0	0.0	\$16,489	2.1	1.1
N/A	Total	1,414	100.0	11.8	\$16,489	2.1	1.1
Total	00-19	872	7.2	0.0	\$4,977	2.6	1.4
Total	20-24	1,174	9.8	0.0	\$15,690	3.0	1.6
Total	25-34	2,416	20.1	0.0	\$31,631	3.3	1.3
Total	35-44	2,191	18.2	0.0	\$41,096	3.4	1.3
Total	45-54	1,895	15.7	0.0	\$44,187	3.5	1.2
Total	55-64	1,671	13.9	0.0	\$46,082	3.6	1.2
Total	65-Up	399	3.3	0.0	\$29,847	3.4	1.1
Total	N/A	1,416	11.8	0.0	\$16,547	2.1	1.1
Total	Total	12,034	100.0	100.0	\$32,018	3.2	1.3

Note: Persons worked at any time during the year.

County Determination: Based on county of employment in which the person made the most money in the year.

N/A: Represents persons with demographic data that is unavailable.

N/A = Nonresidents, individuals for whom demographic data are not available.

Source: Demographics of Persons Working in Wyoming by County, Industry, Age, & Gender, 2000-2017.

Research & Planning, Wyoming Department of Workforce Services.

Prepared by M. Moore, Research & Planning, WY DWS, 6/12/18.

Average Earnings by Age and Gender with Place of Work in Uinta County in 2014

Gender	Age Group	Number	Age Percent	Gender Percent	Average Annual Wage	Average Quarters Worked	Average Annual Employers
Women	00-19	415	8.5	0.0	\$3,918	2.6	1.5
Women	20-24	520	10.6	0.0	\$11,997	3.1	1.7
Women	25-34	1,036	21.2	0.0	\$19,526	3.3	1.4
Women	35-44	984	20.1	0.0	\$26,360	3.6	1.4
Women	45-54	895	18.3	0.0	\$31,642	3.6	1.3
Women	55-64	852	17.4	0.0	\$33,497	3.7	1.2
Women	65-Up	194	4.0	0.0	\$19,672	3.4	1.1
Women	Total	4,896	100.0	41.5	\$23,429	3.4	1.4
Men	00-19	408	7.5	0.0	\$5,356	2.5	1.4
Men	20-24	594	10.9	0.0	\$20,519	3.0	1.5
Men	25-34	1,313	24.1	0.0	\$43,215	3.3	1.3
Men	35-44	1,105	20.3	0.0	\$54,667	3.4	1.2
Men	45-54	923	17.0	0.0	\$54,256	3.4	1.2
Men	55-64	880	16.2	0.0	\$60,584	3.6	1.2
Men	65-Up	217	4.0	0.0	\$39,532	3.2	1.1
Men	N/A	2	0.0	0.0	\$59,720	4.0	1.0
Men	Total	5,442	100.0	46.1	\$44,765	3.3	1.3
N/A	N/A	1,464	100.0	0.0	\$17,463	2.2	1.1
N/A	Total	1,464	100.0	12.4	\$17,463	2.2	1.1
Total	00-19	823	7.0	0.0	\$4,631	2.6	1.4
Total	20-24	1,114	9.4	0.0	\$16,541	3.0	1.6
Total	25-34	2,349	19.9	0.0	\$32,768	3.3	1.4
Total	35-44	2,089	17.7	0.0	\$41,333	3.5	1.3
Total	45-54	1,818	15.4	0.0	\$43,123	3.5	1.3
Total	55-64	1,732	14.7	0.0	\$47,259	3.6	1.2
Total	65-Up	411	3.5	0.0	\$30,158	3.3	1.1
Total	N/A	1,466	12.4	0.0	\$17,521	2.2	1.1
Total	Total	11,802	100.0	100.0	\$32,527	3.2	1.3

Note: Persons worked at any time during the year.

County Determination: Based on county of employment in which the person made the most money in the year.

N/A: Represents persons with demographic data that is unavailable.

N/A = Nonresidents, individuals for whom demographic data are not available.

Source: Demographics of Persons Working in Wyoming by County, Industry, Age, & Gender, 2000-2017.
Research & Planning, Wyoming Department of Workforce Services.

Prepared by M. Moore, Research & Planning, WY DWS, 6/12/18.

Average Earnings by Age and Gender with Place of Work in Uinta County in 2015

Gender	Age Group	Number	Age Percent	Gender Percent	Average Annual Wage	Average Quarters Worked	Average Annual Employers
Women	00-19	427	8.7	0.0	\$4,194	2.7	1.5
Women	20-24	522	10.6	0.0	\$12,203	3.1	1.7
Women	25-34	1,016	20.6	0.0	\$19,839	3.3	1.4
Women	35-44	1,019	20.7	0.0	\$26,384	3.5	1.4
Women	45-54	872	17.7	0.0	\$30,766	3.6	1.3
Women	55-64	858	17.4	0.0	\$33,473	3.6	1.2
Women	65-Up	216	4.4	0.0	\$21,384	3.4	1.1
Women	N/A	2	0.0	0.0	\$618	1.0	1.0
Women	Total	4,932	100.0	41.6	\$23,393	3.4	1.4
Men	00-19	449	8.4	0.0	\$5,277	2.5	1.4
Men	20-24	559	10.4	0.0	\$20,054	3.0	1.6
Men	25-34	1,259	23.5	0.0	\$38,435	3.2	1.4
Men	35-44	1,130	21.1	0.0	\$50,796	3.4	1.3
Men	45-54	878	16.4	0.0	\$54,130	3.4	1.2
Men	55-64	862	16.1	0.0	\$59,144	3.5	1.2
Men	65-Up	229	4.3	0.0	\$39,637	3.2	1.2
Men	N/A	2	0.0	0.0	\$63,139	4.0	1.0
Men	Total	5,368	100.0	45.3	\$42,303	3.2	1.3
N/A	N/A	1,546	100.0	0.0	\$15,818	2.1	1.1
N/A	Total	1,546	100.0	13.1	\$15,818	2.1	1.1
Total	00-19	876	7.4	0.0	\$4,749	2.6	1.5
Total	20-24	1,081	9.1	0.0	\$16,263	3.1	1.6
Total	25-34	2,275	19.2	0.0	\$30,130	3.2	1.4
Total	35-44	2,149	18.1	0.0	\$39,221	3.4	1.3
Total	45-54	1,750	14.8	0.0	\$42,488	3.5	1.2
Total	55-64	1,720	14.5	0.0	\$46,339	3.6	1.2
Total	65-Up	445	3.8	0.0	\$30,777	3.3	1.1
Total	N/A	1,550	13.1	0.0	\$15,859	2.1	1.1
Total	Total	11,846	100.0	100.0	\$30,973	3.1	1.3

Note: Persons worked at any time during the year.

County Determination: Based on county of employment in which the person made the most money in the year.

N/A: Represents persons with demographic data that is unavailable.

N/A = Nonresidents, individuals for whom demographic data are not available.

Source: Demographics of Persons Working in Wyoming by County, Industry, Age, & Gender, 2000-2017.

Research & Planning, Wyoming Department of Workforce Services.

Prepared by M. Moore, Research & Planning, WY DWS, 6/12/18.

Average Earnings by Age and Gender with Place of Work in Uinta County in 2016

Gender	Age Group	Number	Age Percent	Gender Percent	Average Annual Wage	Average Quarters Worked	Average Annual Employers
Women	00-19	399	8.5	0.0	\$4,185	2.6	1.5
Women	20-24	496	10.5	0.0	\$12,131	3.1	1.6
Women	25-34	939	19.9	0.0	\$21,568	3.4	1.4
Women	35-44	981	20.8	0.0	\$27,029	3.6	1.3
Women	45-54	824	17.5	0.0	\$31,617	3.6	1.3
Women	55-64	865	18.3	0.0	\$33,134	3.7	1.2
Women	65-Up	216	4.6	0.0	\$21,137	3.4	1.1
Women	N/A	1	0.0	0.0	\$9,825	2.0	1.0
Women	Total	4,721	100.0	44.2	\$24,093	3.4	1.4
Men	00-19	382	7.9	0.0	\$5,564	2.7	1.4
Men	20-24	513	10.7	0.0	\$18,089	2.9	1.5
Men	25-34	1,101	22.9	0.0	\$38,175	3.3	1.4
Men	35-44	992	20.6	0.0	\$51,230	3.4	1.2
Men	45-54	802	16.7	0.0	\$52,893	3.5	1.2
Men	55-64	785	16.3	0.0	\$55,045	3.5	1.1
Men	65-Up	238	4.9	0.0	\$43,506	3.4	1.1
Men	N/A	3	0.1	0.0	\$41,901	3.3	1.0
Men	Total	4,816	100.0	45.1	\$41,604	3.3	1.3
N/A	N/A	1,140	100.0	0.0	\$16,625	2.2	1.1
N/A	Total	1,140	100.0	10.7	\$16,625	2.2	1.1
Total	00-19	781	7.3	0.0	\$4,859	2.7	1.5
Total	20-24	1,009	9.5	0.0	\$15,160	3.0	1.6
Total	25-34	2,040	19.1	0.0	\$30,531	3.4	1.4
Total	35-44	1,973	18.5	0.0	\$39,197	3.5	1.3
Total	45-54	1,626	15.2	0.0	\$42,111	3.5	1.2
Total	55-64	1,650	15.5	0.0	\$43,559	3.6	1.2
Total	65-Up	454	4.3	0.0	\$32,863	3.4	1.1
Total	N/A	1,144	10.7	0.0	\$16,685	2.2	1.1
Total	Total	10,677	100.0	100.0	\$31,194	3.2	1.3

Note: Persons worked at any time during the year.

County Determination: Based on county of employment in which the person made the most money in the year.

N/A: Represents persons with demographic data that is unavailable.

N/A = Nonresidents, individuals for whom demographic data are not available.

Source: Demographics of Persons Working in Wyoming by County, Industry, Age, & Gender, 2000-2017.

Research & Planning, Wyoming Department of Workforce Services.

Prepared by M. Moore, Research & Planning, WY DWS, 6/12/18.

Average Earnings by Age and Gender with Place of Work in Uinta County in 2017

Gender	Age Group	Number	Age Percent	Gender Percent	Average Annual Wage	Average Quarters Worked	Average Annual Employers
Women	00-19	403	8.6	0.0	\$4,559	2.7	1.4
Women	20-24	483	10.4	0.0	\$12,637	3.1	1.6
Women	25-34	918	19.7	0.0	\$21,299	3.4	1.4
Women	35-44	997	21.4	0.0	\$27,680	3.5	1.4
Women	45-54	806	17.3	0.0	\$31,371	3.6	1.3
Women	55-64	824	17.7	0.0	\$33,032	3.7	1.2
Women	65-Up	229	4.9	0.0	\$22,132	3.4	1.1
Women	N/A	1	0.0	0.0	\$3,766	1.0	1.0
Women	Total	4,661	100.0	43.9	\$24,172	3.4	1.4
Men	00-19	368	8.0	0.0	\$5,610	2.7	1.4
Men	20-24	479	10.4	0.0	\$19,529	3.1	1.6
Men	25-34	1,003	21.8	0.0	\$38,134	3.3	1.4
Men	35-44	979	21.3	0.0	\$53,687	3.5	1.3
Men	45-54	776	16.9	0.0	\$55,192	3.5	1.3
Men	55-64	763	16.6	0.0	\$53,746	3.4	1.2
Men	65-Up	235	5.1	0.0	\$42,287	3.3	1.1
Men	N/A	2	0.0	0.0	\$60,477	4.0	1.0
Men	Total	4,605	100.0	43.4	\$42,589	3.3	1.3
N/A	N/A	1,346	100.0	0.0	\$16,226	2.1	1.1
N/A	Total	1,346	100.0	12.7	\$16,226	2.1	1.1
Total	00-19	771	7.3	0.0	\$5,061	2.7	1.4
Total	20-24	962	9.1	0.0	\$16,069	3.1	1.6
Total	25-34	1,921	18.1	0.0	\$30,089	3.3	1.4
Total	35-44	1,976	18.6	0.0	\$40,565	3.5	1.3
Total	45-54	1,582	14.9	0.0	\$43,056	3.6	1.3
Total	55-64	1,587	15.0	0.0	\$42,991	3.6	1.2
Total	65-Up	464	4.4	0.0	\$32,340	3.3	1.1
Total	N/A	1,349	12.7	0.0	\$16,282	2.1	1.1
Total	Total	10,612	100.0	100.0	\$31,156	3.2	1.3

Note: Persons worked at any time during the year.

County Determination: Based on county of employment in which the person made the most money in the year.

N/A: Represents persons with demographic data that is unavailable.

N/A = Nonresidents, individuals for whom demographic data are not available.

Source: Demographics of Persons Working in Wyoming by County, Industry, Age, & Gender, 2000-2017.

Research & Planning, Wyoming Department of Workforce Services.

Prepared by M. Moore, Research & Planning, WY DWS, 6/12/18.