

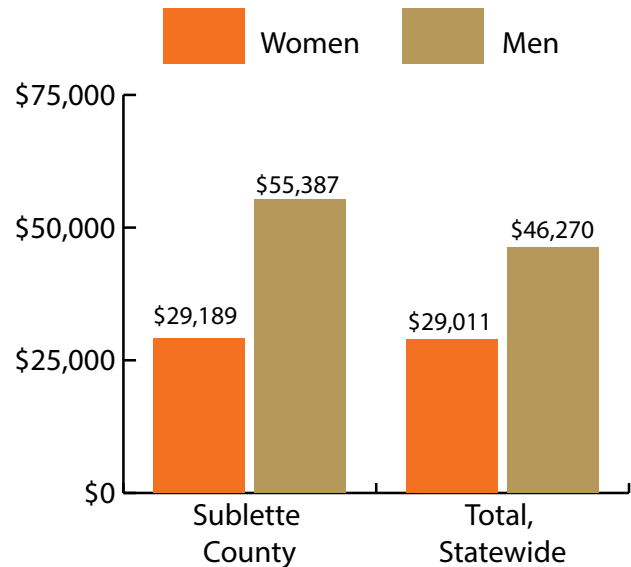
Sublette County at a Glance, 2017

Demographics of Persons Working in Wyoming by County, Industry, Age, & Gender, 2000-2017

Table: Total Number of Persons Working in Sublette County, WY, at Any Time by Gender and Age, 2016-2017

Gender	2016	2017	Change	
			N	%
Women	1,839	1,828	-11	-0.6
Men	2,595	2,611	16	0.6
Nonresidents	573	743	170	29.7
Total	5,007	5,182	175	3.5

Age	2016	2017	Change	
			N	%
00-19	255	312	57	22.4
20-24	347	349	2	0.6
25-34	952	915	-37	-3.9
35-44	1,007	1,005	-2	-0.2
45-54	835	824	-11	-1.3
55-64	748	734	-14	-1.9
65-Up	289	299	10	3.5
Nonresidents	574	744	170	29.6
Total	5,007	5,182	175	3.5



Women's Wages as % of Men's Wages

Sublette County: 52.7%

Total: 62.7%

Figure: Average Annual Wages by Gender, 2017

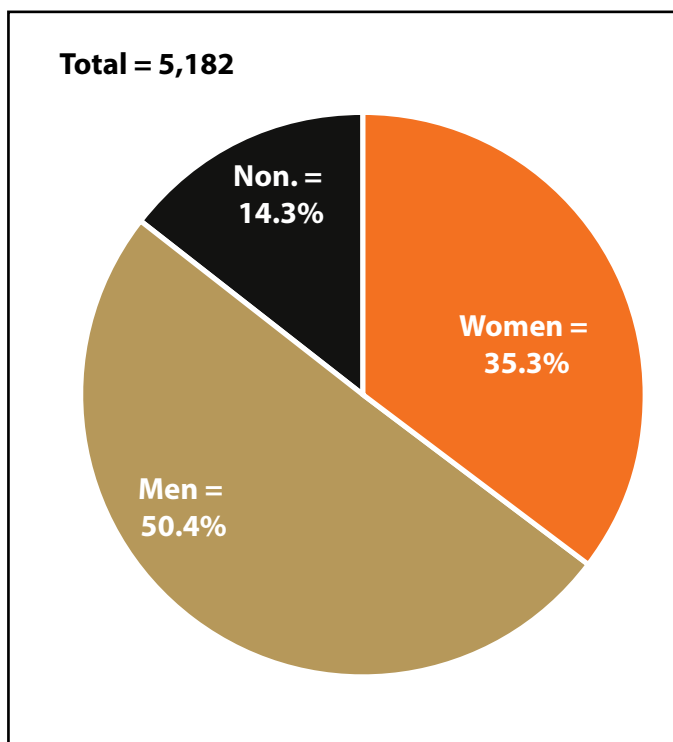


Figure: Persons Working by Gender, 2017

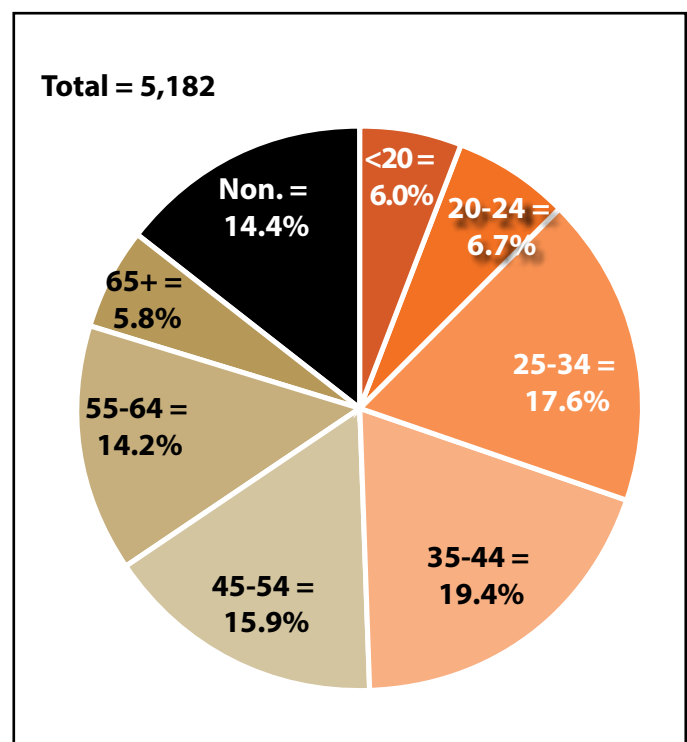


Figure: Persons Working by Age, 2017

Note: Nonresidents are individuals for whom demographic data are not available.

Source: Demographics of Persons Working in Wyoming by County, Industry, Age, & Gender, 2000-2017. Research & Planning, Wyoming Department of Workforce Services. Prepared by M. Moore, Research & Planning, WY DWS, 6/12/18.

Persons Working in Sublette County by Gender and Age, 2000-2017

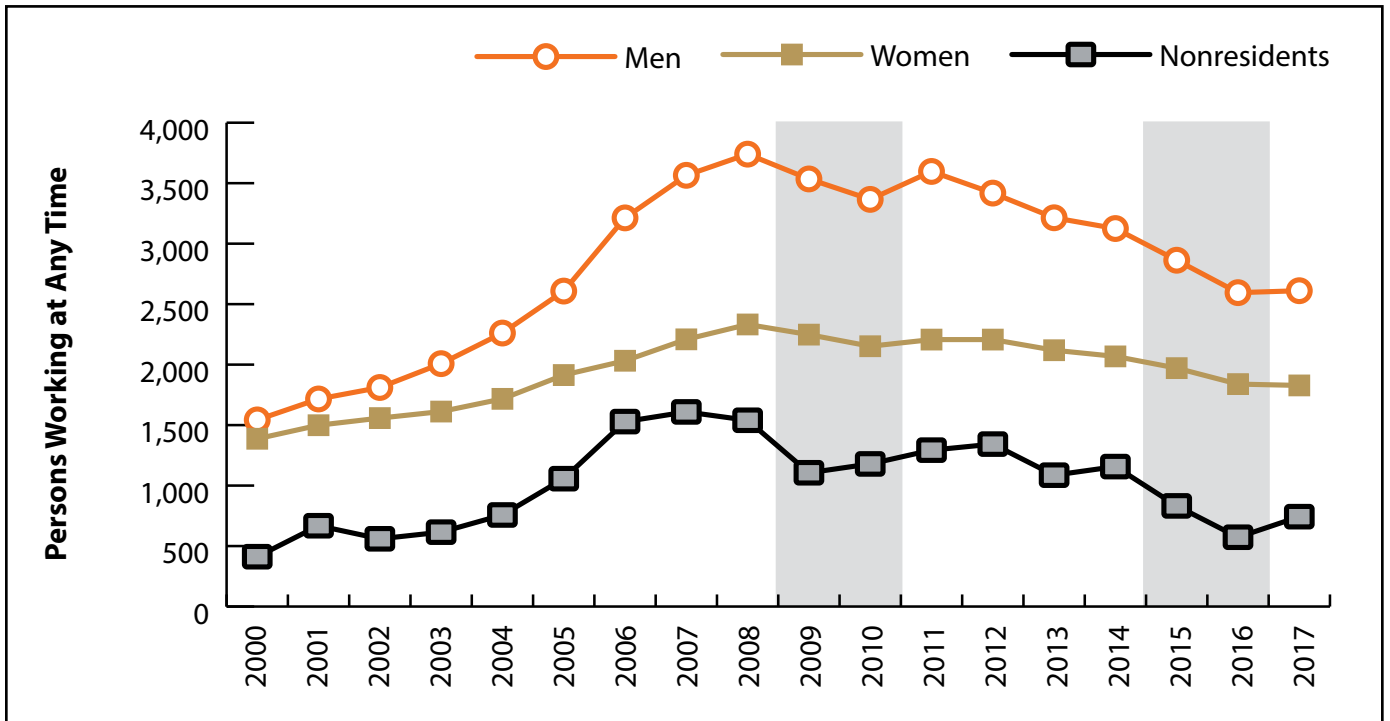


Figure: Persons Working in Sublette County at Any Time by Gender, 2000-2017

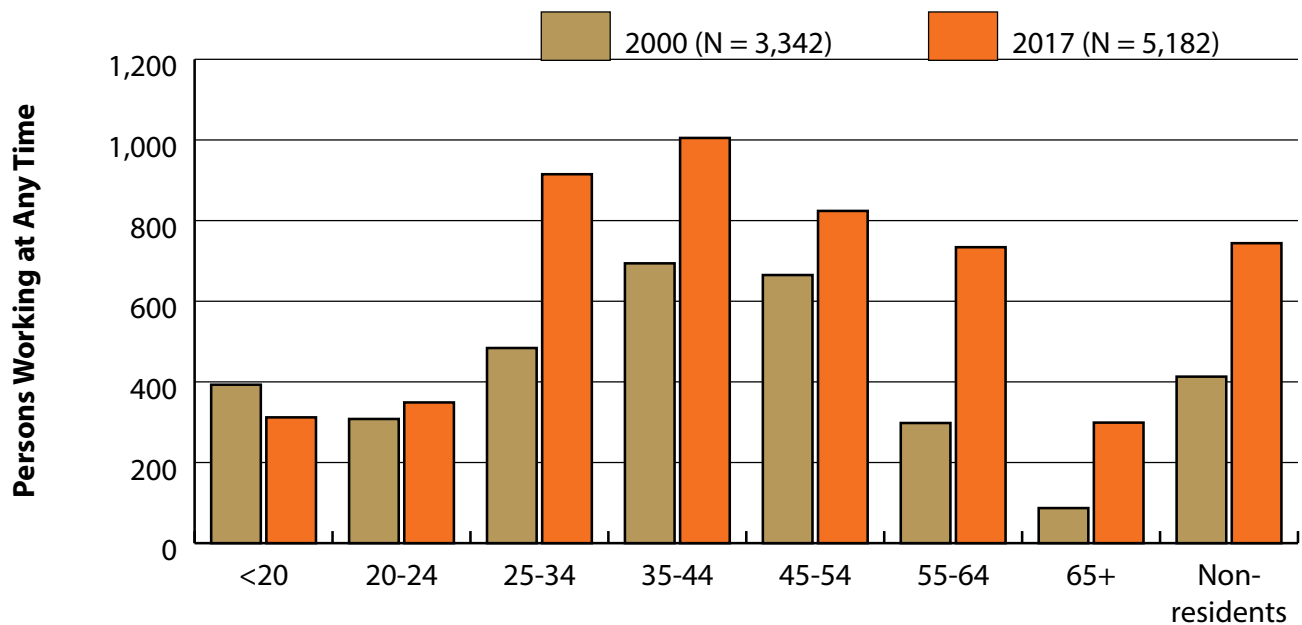


Figure: Persons Working in Sublette County at Any Time by Age, 2000-2017

Note: Nonresidents are individuals for whom demographic data are not available.
 Shaded areas indicate periods of economic downturn: 2009Q1-2010Q1 and 2015Q2-2016Q4.
 Source: Demographics of Persons Working in Wyoming by County, Industry, Age, & Gender, 2000-2017. Research & Planning, Wyoming Department of Workforce Services. Prepared by M. Moore, Research & Planning, WY DWS, 6/12/18.

Wages for Persons Working in Sublette County by Gender, 2000-2017

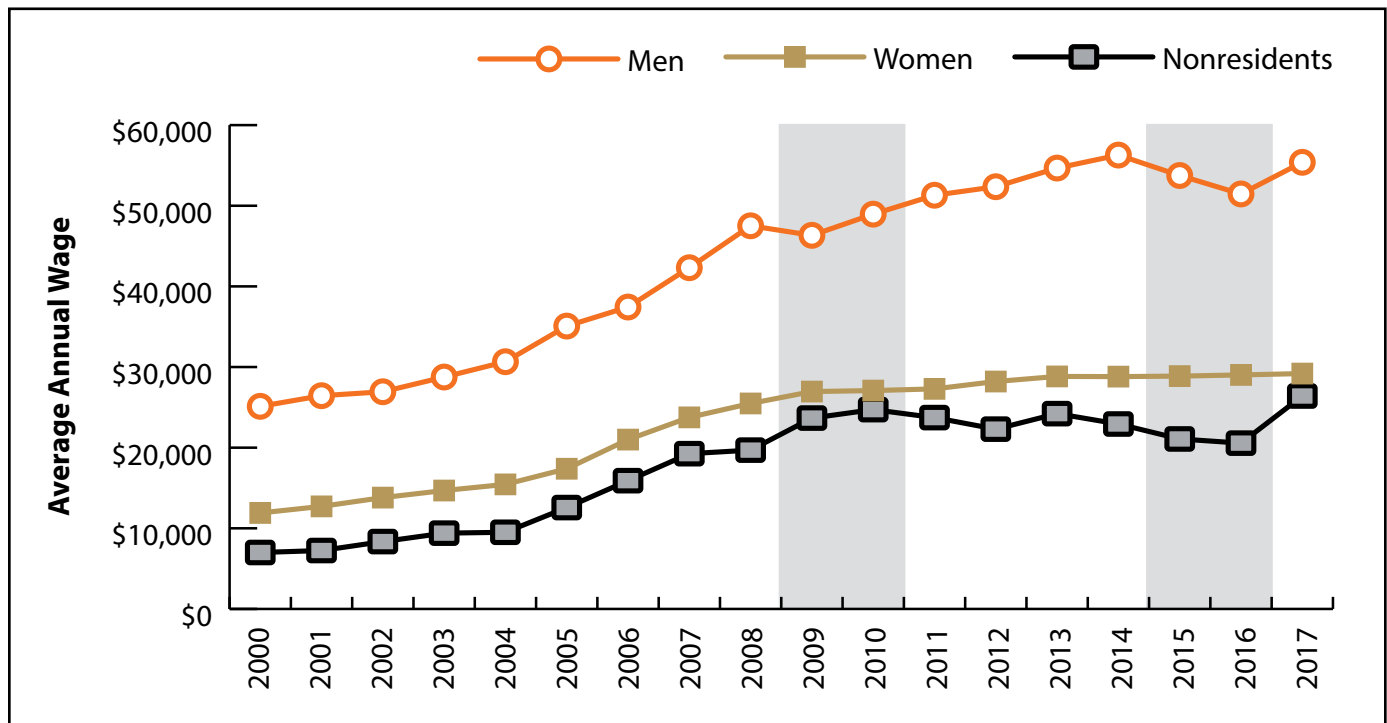


Figure: Average Annual Wage for Persons Working in Sublette County at Any Time by Age, 2000-2017

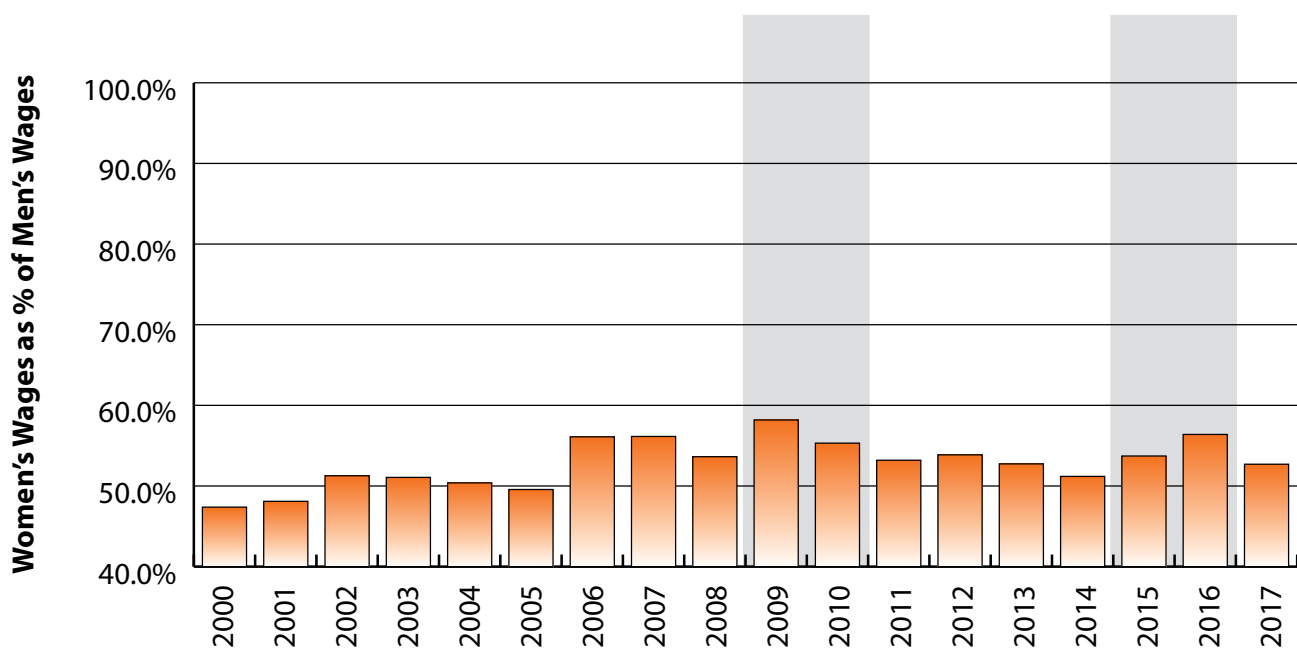


Figure: Women's Average Annual Wages as a Percent of Men's Wages for Persons Working in Sublette County at Any Time by Age, 2000-2017

Note: Nonresidents are individuals for whom demographic data are not available.
 Shaded areas indicate periods of economic downturn: 2009Q1-2010Q1 and 2015Q2-2016Q4.
 Source: Demographics of Persons Working in Wyoming by County, Industry, Age, & Gender, 2000-2017. Research & Planning, Wyoming Department of Workforce Services. Prepared by M. Moore, Research & Planning, WY DWS, 6/12/18.

Average Earnings by Age and Gender with Place of Work in Sublette County in 2000

Gender	Age Group	Number	Age Percent	Gender Percent	Average Annual Wage	Average Quarters Worked	Average Annual Employers
Women	00-19	181	13.0	0.0	\$1,961	2.3	1.5
Women	20-24	145	10.5	0.0	\$5,784	2.6	1.7
Women	25-34	226	16.3	0.0	\$10,336	3.0	1.6
Women	35-44	341	24.6	0.0	\$13,889	3.3	1.6
Women	45-54	314	22.6	0.0	\$18,407	3.4	1.4
Women	55-64	145	10.5	0.0	\$14,822	3.4	1.3
Women	65-Up	35	2.5	0.0	\$9,031	3.0	1.1
Women	Total	1,387	100.0	41.5	\$11,904	3.1	1.5
Men	00-19	212	13.7	0.0	\$3,119	2.2	1.4
Men	20-24	163	10.6	0.0	\$10,711	2.8	1.8
Men	25-34	258	16.7	0.0	\$21,804	3.3	1.5
Men	35-44	353	22.9	0.0	\$30,792	3.4	1.3
Men	45-54	351	22.7	0.0	\$43,099	3.5	1.3
Men	55-64	153	9.9	0.0	\$24,806	3.0	1.2
Men	65-Up	52	3.4	0.0	\$18,069	3.0	1.1
Men	N/A	1	0.1	0.0	\$3,150	3.0	1.0
Men	Total	1,543	100.0	46.2	\$25,125	3.1	1.4
N/A	N/A	412	100.0	0.0	\$7,000	1.6	1.1
N/A	Total	412	100.0	12.3	\$7,000	1.6	1.1
Total	00-19	393	11.8	0.0	\$2,586	2.2	1.5
Total	20-24	308	9.2	0.0	\$8,392	2.7	1.7
Total	25-34	484	14.5	0.0	\$16,449	3.2	1.5
Total	35-44	694	20.8	0.0	\$22,487	3.4	1.5
Total	45-54	665	19.9	0.0	\$31,440	3.5	1.3
Total	55-64	298	8.9	0.0	\$19,948	3.2	1.3
Total	65-Up	87	2.6	0.0	\$14,433	3.0	1.1
Total	N/A	413	12.4	0.0	\$6,991	1.6	1.1
Total	Total	3,342	100.0	100.0	\$17,404	2.9	1.4

Note: Persons worked at any time during the year.

County Determination: Based on county of employment in which the person made the most money in the year.

N/A: Represents persons with demographic data that is unavailable.

N/A = Nonresidents, individuals for whom demographic data are not available.

Source: Demographics of Persons Working in Wyoming by County, Industry, Age, & Gender, 2000-2017.
Research & Planning, Wyoming Department of Workforce Services.

Prepared by M. Moore, Research & Planning, WY DWS, 6/12/18.

Average Earnings by Age and Gender with Place of Work in Sublette County in 2001

Gender	Age Group	Number	Age Percent	Gender Percent	Average Annual Wage	Average Quarters Worked	Average Annual Employers
Women	00-19	209	13.9	0.0	\$2,337	2.3	1.6
Women	20-24	138	9.2	0.0	\$7,065	2.5	1.7
Women	25-34	252	16.8	0.0	\$11,933	3.1	1.6
Women	35-44	337	22.5	0.0	\$15,170	3.3	1.5
Women	45-54	356	23.7	0.0	\$18,674	3.4	1.4
Women	55-64	159	10.6	0.0	\$15,554	3.2	1.3
Women	65-Up	47	3.1	0.0	\$7,437	2.8	1.2
Women	N/A	1	0.1	0.0	\$12,167	2.0	2.0
Women	Total	1,499	100.0	38.6	\$12,719	3.0	1.5
Men	00-19	228	13.3	0.0	\$3,209	2.2	1.5
Men	20-24	180	10.5	0.0	\$13,657	2.7	1.8
Men	25-34	321	18.7	0.0	\$27,835	3.0	1.5
Men	35-44	375	21.9	0.0	\$31,946	3.2	1.4
Men	45-54	378	22.0	0.0	\$40,213	3.3	1.3
Men	55-64	166	9.7	0.0	\$28,598	3.2	1.3
Men	65-Up	66	3.8	0.0	\$19,997	2.9	1.1
Men	N/A	2	0.1	0.0	\$2,738	2.5	1.0
Men	Total	1,716	100.0	44.2	\$26,444	3.0	1.4
N/A	N/A	668	100.0	0.0	\$7,245	1.4	1.1
N/A	Total	668	100.0	17.2	\$7,245	1.4	1.1
Total	00-19	437	11.3	0.0	\$2,792	2.3	1.6
Total	20-24	318	8.2	0.0	\$10,796	2.6	1.8
Total	25-34	573	14.8	0.0	\$20,841	3.0	1.5
Total	35-44	712	18.3	0.0	\$24,006	3.2	1.5
Total	45-54	734	18.9	0.0	\$29,767	3.3	1.4
Total	55-64	325	8.4	0.0	\$22,217	3.2	1.3
Total	65-Up	113	2.9	0.0	\$14,773	2.8	1.1
Total	N/A	671	17.3	0.0	\$7,239	1.5	1.1
Total	Total	3,883	100.0	100.0	\$17,843	2.7	1.4

Note: Persons worked at any time during the year.

County Determination: Based on county of employment in which the person made the most money in the year.

N/A: Represents persons with demographic data that is unavailable.

N/A = Nonresidents, individuals for whom demographic data are not available.

Source: Demographics of Persons Working in Wyoming by County, Industry, Age, & Gender, 2000-2017.

Research & Planning, Wyoming Department of Workforce Services.

Prepared by M. Moore, Research & Planning, WY DWS, 6/12/18.

Average Earnings by Age and Gender with Place of Work in Sublette County in 2002

Gender	Age Group	Number	Age Percent	Gender Percent	Average Annual Wage	Average Quarters Worked	Average Annual Employers
Women	00-19	214	13.7	0.0	\$2,704	2.5	1.7
Women	20-24	137	8.8	0.0	\$7,757	2.7	1.9
Women	25-34	269	17.3	0.0	\$12,655	3.0	1.5
Women	35-44	347	22.3	0.0	\$16,074	3.4	1.6
Women	45-54	365	23.4	0.0	\$19,632	3.4	1.5
Women	55-64	180	11.6	0.0	\$18,333	3.3	1.3
Women	65-Up	46	3.0	0.0	\$9,221	3.1	1.3
Women	Total	1,558	100.0	39.7	\$13,808	3.1	1.5
Men	00-19	228	12.6	0.0	\$4,129	2.5	1.5
Men	20-24	209	11.5	0.0	\$13,932	2.8	1.8
Men	25-34	344	19.0	0.0	\$26,938	3.1	1.4
Men	35-44	371	20.5	0.0	\$32,536	3.3	1.4
Men	45-54	399	22.0	0.0	\$41,501	3.4	1.2
Men	55-64	187	10.3	0.0	\$30,356	3.2	1.2
Men	65-Up	71	3.9	0.0	\$18,862	2.8	1.1
Men	N/A	2	0.1	0.0	\$5,360	1.5	1.0
Men	Total	1,811	100.0	46.1	\$26,933	3.1	1.4
N/A	N/A	560	100.0	0.0	\$8,354	1.6	1.2
N/A	Total	560	100.0	14.3	\$8,354	1.6	1.2
Total	00-19	442	11.2	0.0	\$3,439	2.5	1.6
Total	20-24	346	8.8	0.0	\$11,487	2.7	1.8
Total	25-34	613	15.6	0.0	\$20,670	3.1	1.5
Total	35-44	718	18.3	0.0	\$24,580	3.3	1.5
Total	45-54	764	19.4	0.0	\$31,053	3.4	1.3
Total	55-64	367	9.3	0.0	\$24,459	3.3	1.3
Total	65-Up	117	3.0	0.0	\$15,072	2.9	1.2
Total	N/A	562	14.3	0.0	\$8,344	1.6	1.2
Total	Total	3,929	100.0	100.0	\$19,080	2.9	1.4

Note: Persons worked at any time during the year.

County Determination: Based on county of employment in which the person made the most money in the year.

N/A: Represents persons with demographic data that is unavailable.

N/A = Nonresidents, individuals for whom demographic data are not available.

Source: Demographics of Persons Working in Wyoming by County, Industry, Age, & Gender, 2000-2017.
Research & Planning, Wyoming Department of Workforce Services.

Prepared by M. Moore, Research & Planning, WY DWS, 6/12/18.

Average Earnings by Age and Gender with Place of Work in Sublette County in 2003

Gender	Age Group	Number	Age Percent	Gender Percent	Average Annual Wage	Average Quarters Worked	Average Annual Employers
Women	00-19	195	12.1	0.0	\$2,706	2.4	1.6
Women	20-24	150	9.3	0.0	\$7,908	2.7	1.8
Women	25-34	278	17.2	0.0	\$14,436	3.2	1.5
Women	35-44	343	21.3	0.0	\$16,445	3.3	1.5
Women	45-54	400	24.8	0.0	\$19,312	3.3	1.4
Women	55-64	190	11.8	0.0	\$21,239	3.4	1.3
Women	65-Up	53	3.3	0.0	\$10,088	3.0	1.2
Women	N/A	3	0.2	0.0	\$3,819	1.0	1.0
Women	Total	1,612	100.0	38.1	\$14,686	3.1	1.5
Men	00-19	210	10.5	0.0	\$4,636	2.4	1.5
Men	20-24	253	12.6	0.0	\$14,413	2.8	1.7
Men	25-34	422	21.0	0.0	\$27,050	3.1	1.5
Men	35-44	403	20.1	0.0	\$34,629	3.3	1.4
Men	45-54	428	21.3	0.0	\$42,637	3.4	1.2
Men	55-64	219	10.9	0.0	\$35,781	3.3	1.2
Men	65-Up	73	3.6	0.0	\$22,914	3.0	1.1
Men	Total	2,008	100.0	47.4	\$28,759	3.1	1.4
N/A	N/A	615	100.0	0.0	\$9,400	1.6	1.1
N/A	Total	615	100.0	14.5	\$9,400	1.6	1.1
Total	00-19	405	9.6	0.0	\$3,706	2.4	1.5
Total	20-24	403	9.5	0.0	\$11,991	2.8	1.7
Total	25-34	700	16.5	0.0	\$22,041	3.1	1.5
Total	35-44	746	17.6	0.0	\$26,268	3.3	1.4
Total	45-54	828	19.6	0.0	\$31,369	3.4	1.3
Total	55-64	409	9.7	0.0	\$29,025	3.4	1.3
Total	65-Up	126	3.0	0.0	\$17,519	3.0	1.2
Total	N/A	618	14.6	0.0	\$9,373	1.6	1.1
Total	Total	4,235	100.0	100.0	\$20,591	2.9	1.4

Note: Persons worked at any time during the year.

County Determination: Based on county of employment in which the person made the most money in the year.

N/A: Represents persons with demographic data that is unavailable.

N/A = Nonresidents, individuals for whom demographic data are not available.

Source: Demographics of Persons Working in Wyoming by County, Industry, Age, & Gender, 2000-2017.

Research & Planning, Wyoming Department of Workforce Services.

Prepared by M. Moore, Research & Planning, WY DWS, 6/12/18.

Average Earnings by Age and Gender with Place of Work in Sublette County in 2004

Gender	Age Group	Number	Age Percent	Gender Percent	Average Annual Wage	Average Quarters Worked	Average Annual Employers
Women	00-19	217	12.6	0.0	\$3,003	2.4	1.6
Women	20-24	137	8.0	0.0	\$7,850	2.6	1.9
Women	25-34	318	18.5	0.0	\$15,177	3.2	1.6
Women	35-44	386	22.5	0.0	\$16,721	3.2	1.5
Women	45-54	395	23.0	0.0	\$21,040	3.5	1.4
Women	55-64	209	12.2	0.0	\$22,095	3.4	1.3
Women	65-Up	54	3.1	0.0	\$10,534	3.2	1.3
Women	N/A	1	0.1	0.0	\$17,406	2.0	1.0
Women	Total	1,717	100.0	36.3	\$15,447	3.1	1.5
Men	00-19	239	10.6	0.0	\$4,488	2.4	1.5
Men	20-24	257	11.4	0.0	\$15,517	2.8	1.7
Men	25-34	526	23.3	0.0	\$30,039	3.1	1.5
Men	35-44	441	19.5	0.0	\$34,688	3.3	1.4
Men	45-54	462	20.4	0.0	\$46,714	3.5	1.3
Men	55-64	264	11.7	0.0	\$37,803	3.3	1.2
Men	65-Up	70	3.1	0.0	\$22,756	3.0	1.2
Men	N/A	2	0.1	0.0	\$2,261	1.0	1.0
Men	Total	2,261	100.0	47.8	\$30,658	3.1	1.4
N/A	N/A	757	100.0	0.0	\$9,508	1.6	1.2
N/A	Total	757	100.0	16.0	\$9,508	1.6	1.2
Total	00-19	456	9.6	0.0	\$3,781	2.4	1.6
Total	20-24	394	8.3	0.0	\$12,852	2.7	1.8
Total	25-34	844	17.8	0.0	\$24,439	3.1	1.6
Total	35-44	827	17.5	0.0	\$26,302	3.2	1.5
Total	45-54	857	18.1	0.0	\$34,880	3.5	1.3
Total	55-64	473	10.0	0.0	\$30,862	3.3	1.3
Total	65-Up	124	2.6	0.0	\$17,434	3.1	1.2
Total	N/A	760	16.1	0.0	\$9,499	1.6	1.2
Total	Total	4,735	100.0	100.0	\$21,761	2.9	1.4

Note: Persons worked at any time during the year.

County Determination: Based on county of employment in which the person made the most money in the year.

N/A: Represents persons with demographic data that is unavailable.

N/A = Nonresidents, individuals for whom demographic data are not available.

Source: Demographics of Persons Working in Wyoming by County, Industry, Age, & Gender, 2000-2017.
Research & Planning, Wyoming Department of Workforce Services.

Prepared by M. Moore, Research & Planning, WY DWS, 6/12/18.

Average Earnings by Age and Gender with Place of Work in Sublette County in 2005

Gender	Age Group	Number	Age Percent	Gender Percent	Average Annual Wage	Average Quarters Worked	Average Annual Employers
Women	00-19	227	11.9	0.0	\$3,585	2.4	1.6
Women	20-24	196	10.2	0.0	\$10,064	2.8	2.0
Women	25-34	374	19.5	0.0	\$15,565	3.0	1.6
Women	35-44	392	20.5	0.0	\$20,542	3.3	1.6
Women	45-54	425	22.2	0.0	\$23,698	3.4	1.5
Women	55-64	233	12.2	0.0	\$23,818	3.3	1.3
Women	65-Up	67	3.5	0.0	\$14,843	3.2	1.2
Women	Total	1,914	100.0	34.3	\$17,386	3.1	1.6
Men	00-19	264	10.1	0.0	\$6,359	2.6	1.7
Men	20-24	314	12.0	0.0	\$20,381	2.9	1.8
Men	25-34	585	22.4	0.0	\$36,311	3.1	1.6
Men	35-44	501	19.2	0.0	\$37,745	3.2	1.5
Men	45-54	562	21.5	0.0	\$51,993	3.4	1.4
Men	55-64	298	11.4	0.0	\$40,668	3.2	1.3
Men	65-Up	82	3.1	0.0	\$22,938	2.9	1.2
Men	N/A	2	0.1	0.0	\$15,231	3.0	1.0
Men	Total	2,608	100.0	46.7	\$35,077	3.1	1.5
N/A	N/A	1,057	100.0	0.0	\$12,571	1.9	1.2
N/A	Total	1,057	100.0	18.9	\$12,571	1.9	1.2
Total	00-19	491	8.8	0.0	\$5,077	2.5	1.6
Total	20-24	510	9.1	0.0	\$16,416	2.9	1.9
Total	25-34	959	17.2	0.0	\$28,220	3.1	1.6
Total	35-44	893	16.0	0.0	\$30,193	3.2	1.5
Total	45-54	987	17.7	0.0	\$39,809	3.4	1.4
Total	55-64	531	9.5	0.0	\$33,275	3.3	1.3
Total	65-Up	149	2.7	0.0	\$19,298	3.0	1.2
Total	N/A	1,059	19.0	0.0	\$12,576	1.9	1.2
Total	Total	5,579	100.0	100.0	\$24,744	2.9	1.5

Note: Persons worked at any time during the year.

County Determination: Based on county of employment in which the person made the most money in the year.

N/A: Represents persons with demographic data that is unavailable.

N/A = Nonresidents, individuals for whom demographic data are not available.

Source: Demographics of Persons Working in Wyoming by County, Industry, Age, & Gender, 2000-2017.
Research & Planning, Wyoming Department of Workforce Services.

Prepared by M. Moore, Research & Planning, WY DWS, 6/12/18.

Average Earnings by Age and Gender with Place of Work in Sublette County in 2006

Gender	Age Group	Number	Age Percent	Gender Percent	Average Annual Wage	Average Quarters Worked	Average Annual Employers
Women	00-19	236	11.6	0.0	\$3,871	2.5	1.7
Women	20-24	206	10.1	0.0	\$11,581	2.8	1.9
Women	25-34	382	18.8	0.0	\$20,260	3.1	1.6
Women	35-44	405	19.9	0.0	\$24,567	3.3	1.6
Women	45-54	469	23.1	0.0	\$28,783	3.4	1.5
Women	55-64	259	12.7	0.0	\$27,062	3.4	1.4
Women	65-Up	75	3.7	0.0	\$15,743	3.2	1.1
Women	Total	2,032	100.0	30.0	\$21,002	3.2	1.6
Men	00-19	312	9.7	0.0	\$8,033	2.5	1.6
Men	20-24	417	13.0	0.0	\$22,319	2.7	1.6
Men	25-34	749	23.3	0.0	\$37,903	3.1	1.5
Men	35-44	619	19.3	0.0	\$42,335	3.1	1.4
Men	45-54	664	20.7	0.0	\$52,262	3.3	1.4
Men	55-64	351	10.9	0.0	\$47,153	3.3	1.3
Men	65-Up	100	3.1	0.0	\$26,072	3.0	1.2
Men	N/A	1	0.0	0.0	\$24,873	3.0	1.0
Men	Total	3,213	100.0	47.4	\$37,439	3.1	1.5
N/A	N/A	1,529	100.0	0.0	\$15,907	1.9	1.2
N/A	Total	1,529	100.0	22.6	\$15,907	1.9	1.2
Total	00-19	548	8.1	0.0	\$6,241	2.5	1.6
Total	20-24	623	9.2	0.0	\$18,769	2.8	1.7
Total	25-34	1,131	16.7	0.0	\$31,944	3.1	1.6
Total	35-44	1,024	15.1	0.0	\$35,308	3.2	1.5
Total	45-54	1,133	16.7	0.0	\$42,543	3.3	1.4
Total	55-64	610	9.0	0.0	\$38,622	3.4	1.3
Total	65-Up	175	2.6	0.0	\$21,645	3.1	1.1
Total	N/A	1,530	22.6	0.0	\$15,912	1.9	1.2
Total	Total	6,774	100.0	100.0	\$27,648	2.8	1.4

Note: Persons worked at any time during the year.

County Determination: Based on county of employment in which the person made the most money in the year.

N/A: Represents persons with demographic data that is unavailable.

N/A = Nonresidents, individuals for whom demographic data are not available.

Source: Demographics of Persons Working in Wyoming by County, Industry, Age, & Gender, 2000-2017.
Research & Planning, Wyoming Department of Workforce Services.

Prepared by M. Moore, Research & Planning, WY DWS, 6/12/18.

Average Earnings by Age and Gender with Place of Work in Sublette County in 2007

Gender	Age Group	Number	Age Percent	Gender Percent	Average Annual Wage	Average Quarters Worked	Average Annual Employers
Women	00-19	211	9.6	0.0	\$4,536	2.6	1.6
Women	20-24	216	9.8	0.0	\$12,374	2.8	1.9
Women	25-34	417	18.9	0.0	\$24,178	3.1	1.6
Women	35-44	442	20.0	0.0	\$27,450	3.3	1.5
Women	45-54	519	23.5	0.0	\$29,715	3.4	1.4
Women	55-64	310	14.0	0.0	\$31,682	3.4	1.2
Women	65-Up	93	4.2	0.0	\$14,738	3.0	1.1
Women	N/A	1	0.0	0.0	\$20,777	1.0	1.0
Women	Total	2,209	100.0	29.9	\$23,757	3.2	1.5
Men	00-19	315	8.8	0.0	\$8,157	2.4	1.6
Men	20-24	423	11.9	0.0	\$27,186	2.9	1.7
Men	25-34	852	23.9	0.0	\$42,813	3.0	1.4
Men	35-44	697	19.6	0.0	\$47,170	3.2	1.4
Men	45-54	747	21.0	0.0	\$54,552	3.3	1.3
Men	55-64	398	11.2	0.0	\$58,037	3.4	1.3
Men	65-Up	130	3.6	0.0	\$26,881	3.1	1.2
Men	N/A	3	0.1	0.0	\$28,926	2.7	1.3
Men	Total	3,565	100.0	48.3	\$42,315	3.1	1.4
N/A	N/A	1,609	100.0	0.0	\$19,254	2.1	1.2
N/A	Total	1,609	100.0	21.8	\$19,254	2.1	1.2
Total	00-19	526	7.1	0.0	\$6,704	2.5	1.6
Total	20-24	639	8.7	0.0	\$22,179	2.9	1.7
Total	25-34	1,269	17.2	0.0	\$36,690	3.1	1.5
Total	35-44	1,139	15.4	0.0	\$39,518	3.2	1.4
Total	45-54	1,266	17.1	0.0	\$44,370	3.3	1.4
Total	55-64	708	9.6	0.0	\$46,497	3.4	1.3
Total	65-Up	223	3.0	0.0	\$21,817	3.0	1.2
Total	N/A	1,613	21.8	0.0	\$19,273	2.1	1.2
Total	Total	7,383	100.0	100.0	\$31,737	2.9	1.4

Note: Persons worked at any time during the year.

County Determination: Based on county of employment in which the person made the most money in the year.

N/A: Represents persons with demographic data that is unavailable.

N/A = Nonresidents, individuals for whom demographic data are not available.

Source: Demographics of Persons Working in Wyoming by County, Industry, Age, & Gender, 2000-2017.

Research & Planning, Wyoming Department of Workforce Services.

Prepared by M. Moore, Research & Planning, WY DWS, 6/12/18.

Average Earnings by Age and Gender with Place of Work in Sublette County in 2008

Gender	Age Group	Number	Age Percent	Gender Percent	Average Annual Wage	Average Quarters Worked	Average Annual Employers
Women	00-19	212	9.1	0.0	\$4,658	2.6	1.6
Women	20-24	232	9.9	0.0	\$14,771	2.9	1.8
Women	25-34	459	19.7	0.0	\$24,077	3.2	1.6
Women	35-44	470	20.2	0.0	\$30,052	3.3	1.4
Women	45-54	524	22.5	0.0	\$32,450	3.4	1.3
Women	55-64	346	14.8	0.0	\$32,158	3.5	1.3
Women	65-Up	89	3.8	0.0	\$19,138	3.3	1.2
Women	Total	2,332	100.0	30.6	\$25,482	3.2	1.5
Men	00-19	296	7.9	0.0	\$7,776	2.3	1.5
Men	20-24	438	11.7	0.0	\$28,198	2.8	1.6
Men	25-34	945	25.3	0.0	\$49,578	3.2	1.5
Men	35-44	690	18.4	0.0	\$55,986	3.2	1.4
Men	45-54	795	21.3	0.0	\$58,562	3.2	1.3
Men	55-64	443	11.8	0.0	\$58,659	3.4	1.2
Men	65-Up	133	3.6	0.0	\$37,763	3.1	1.2
Men	Total	3,740	100.0	49.1	\$47,513	3.1	1.4
N/A	N/A	1,540	100.0	0.0	\$19,696	2.0	1.2
N/A	Total	1,540	100.0	20.2	\$19,696	2.0	1.2
Total	00-19	508	6.7	0.0	\$6,475	2.4	1.5
Total	20-24	670	8.8	0.0	\$23,549	2.9	1.7
Total	25-34	1,404	18.4	0.0	\$41,241	3.2	1.5
Total	35-44	1,160	15.2	0.0	\$45,478	3.2	1.4
Total	45-54	1,319	17.3	0.0	\$48,189	3.3	1.3
Total	55-64	789	10.4	0.0	\$47,038	3.5	1.3
Total	65-Up	222	2.9	0.0	\$30,296	3.2	1.2
Total	N/A	1,540	20.2	0.0	\$19,696	2.0	1.2
Total	Total	7,612	100.0	100.0	\$35,136	2.9	1.4

Note: Persons worked at any time during the year.

County Determination: Based on county of employment in which the person made the most money in the year.

N/A: Represents persons with demographic data that is unavailable.

N/A = Nonresidents, individuals for whom demographic data are not available.

Source: Demographics of Persons Working in Wyoming by County, Industry, Age, & Gender, 2000-2017.
Research & Planning, Wyoming Department of Workforce Services.

Prepared by M. Moore, Research & Planning, WY DWS, 6/12/18.

Average Earnings by Age and Gender with Place of Work in Sublette County in 2009

Gender	Age Group	Number	Age Percent	Gender Percent	Average Annual Wage	Average Quarters Worked	Average Annual Employers
Women	00-19	171	7.6	0.0	\$4,917	2.6	1.5
Women	20-24	232	10.3	0.0	\$14,676	2.9	1.6
Women	25-34	454	20.2	0.0	\$25,448	3.2	1.5
Women	35-44	430	19.1	0.0	\$31,483	3.4	1.4
Women	45-54	515	22.9	0.0	\$33,955	3.5	1.3
Women	55-64	351	15.6	0.0	\$34,020	3.5	1.3
Women	65-Up	94	4.2	0.0	\$19,532	3.3	1.1
Women	N/A	1	0.0	0.0	\$270	1.0	1.0
Women	Total	2,248	100.0	32.6	\$26,958	3.3	1.4
Men	00-19	200	5.7	0.0	\$8,303	2.5	1.3
Men	20-24	380	10.7	0.0	\$26,763	2.8	1.5
Men	25-34	931	26.3	0.0	\$44,651	3.2	1.3
Men	35-44	706	20.0	0.0	\$55,270	3.3	1.3
Men	45-54	719	20.3	0.0	\$57,818	3.4	1.3
Men	55-64	470	13.3	0.0	\$55,811	3.3	1.2
Men	65-Up	128	3.6	0.0	\$27,342	3.1	1.1
Men	N/A	1	0.0	0.0	\$58,809	3.0	1.0
Men	Total	3,535	100.0	51.3	\$46,332	3.2	1.3
N/A	N/A	1,106	100.0	0.0	\$23,670	2.3	1.1
N/A	Total	1,106	100.0	16.1	\$23,670	2.3	1.1
Total	00-19	371	5.4	0.0	\$6,743	2.5	1.4
Total	20-24	612	8.9	0.0	\$22,181	2.9	1.5
Total	25-34	1,385	20.1	0.0	\$38,357	3.2	1.4
Total	35-44	1,136	16.5	0.0	\$46,266	3.3	1.3
Total	45-54	1,234	17.9	0.0	\$47,859	3.4	1.3
Total	55-64	821	11.9	0.0	\$46,495	3.4	1.2
Total	65-Up	222	3.2	0.0	\$24,035	3.1	1.1
Total	N/A	1,108	16.1	0.0	\$23,681	2.3	1.1
Total	Total	6,889	100.0	100.0	\$36,371	3.1	1.3

Note: Persons worked at any time during the year.

County Determination: Based on county of employment in which the person made the most money in the year.

N/A: Represents persons with demographic data that is unavailable.

N/A = Nonresidents, individuals for whom demographic data are not available.

Source: Demographics of Persons Working in Wyoming by County, Industry, Age, & Gender, 2000-2017.
Research & Planning, Wyoming Department of Workforce Services.

Prepared by M. Moore, Research & Planning, WY DWS, 6/12/18.

Average Earnings by Age and Gender with Place of Work in Sublette County in 2010

Gender	Age Group	Number	Age Percent	Gender Percent	Average Annual Wage	Average Quarters Worked	Average Annual Employers
Women	00-19	163	7.6	0.0	\$4,698	2.4	1.4
Women	20-24	211	9.8	0.0	\$14,219	2.9	1.5
Women	25-34	431	20.0	0.0	\$25,873	3.2	1.4
Women	35-44	419	19.5	0.0	\$30,709	3.4	1.4
Women	45-54	480	22.3	0.0	\$34,749	3.6	1.3
Women	55-64	357	16.6	0.0	\$33,661	3.5	1.3
Women	65-Up	91	4.2	0.0	\$19,736	3.4	1.2
Women	Total	2,152	100.0	32.1	\$27,080	3.3	1.4
Men	00-19	192	5.7	0.0	\$6,859	2.4	1.4
Men	20-24	377	11.2	0.0	\$26,435	2.8	1.5
Men	25-34	849	25.2	0.0	\$47,676	3.2	1.4
Men	35-44	670	19.9	0.0	\$59,393	3.4	1.3
Men	45-54	671	19.9	0.0	\$61,127	3.4	1.2
Men	55-64	483	14.3	0.0	\$57,782	3.3	1.2
Men	65-Up	122	3.6	0.0	\$34,135	3.1	1.1
Men	N/A	2	0.1	0.0	\$72,537	2.5	1.0
Men	Total	3,366	100.0	50.3	\$48,957	3.2	1.3
N/A	N/A	1,179	100.0	0.0	\$24,718	2.3	1.1
N/A	Total	1,179	100.0	17.6	\$24,718	2.3	1.1
Total	00-19	355	5.3	0.0	\$5,867	2.4	1.4
Total	20-24	588	8.8	0.0	\$22,052	2.8	1.5
Total	25-34	1,280	19.1	0.0	\$40,334	3.2	1.4
Total	35-44	1,089	16.3	0.0	\$48,357	3.4	1.3
Total	45-54	1,151	17.2	0.0	\$50,127	3.5	1.3
Total	55-64	840	12.5	0.0	\$47,530	3.4	1.2
Total	65-Up	213	3.2	0.0	\$27,983	3.2	1.2
Total	N/A	1,181	17.6	0.0	\$24,799	2.3	1.1
Total	Total	6,697	100.0	100.0	\$37,660	3.1	1.3

Note: Persons worked at any time during the year.

County Determination: Based on county of employment in which the person made the most money in the year.

N/A: Represents persons with demographic data that is unavailable.

N/A = Nonresidents, individuals for whom demographic data are not available.

Source: Demographics of Persons Working in Wyoming by County, Industry, Age, & Gender, 2000-2017.
Research & Planning, Wyoming Department of Workforce Services.

Prepared by M. Moore, Research & Planning, WY DWS, 6/12/18.

Average Earnings by Age and Gender with Place of Work in Sublette County in 2011

Gender	Age Group	Number	Age Percent	Gender Percent	Average Annual Wage	Average Quarters Worked	Average Annual Employers
Women	00-19	163	7.4	0.0	\$4,084	2.4	1.5
Women	20-24	219	9.9	0.0	\$14,155	2.9	1.6
Women	25-34	454	20.6	0.0	\$27,431	3.2	1.4
Women	35-44	440	19.9	0.0	\$32,100	3.4	1.4
Women	45-54	457	20.7	0.0	\$34,067	3.5	1.3
Women	55-64	380	17.2	0.0	\$33,209	3.5	1.3
Women	65-Up	94	4.3	0.0	\$18,053	3.3	1.2
Women	Total	2,207	100.0	31.1	\$27,290	3.3	1.4
Men	00-19	216	6.0	0.0	\$7,845	2.5	1.4
Men	20-24	430	12.0	0.0	\$30,364	2.9	1.5
Men	25-34	876	24.4	0.0	\$50,344	3.2	1.4
Men	35-44	741	20.6	0.0	\$61,880	3.3	1.4
Men	45-54	704	19.6	0.0	\$63,662	3.4	1.3
Men	55-64	491	13.7	0.0	\$61,669	3.4	1.2
Men	65-Up	138	3.8	0.0	\$33,822	3.2	1.2
Men	N/A	1	0.0	0.0	\$65,072	2.0	1.0
Men	Total	3,597	100.0	50.7	\$51,303	3.2	1.3
N/A	N/A	1,293	100.0	0.0	\$23,728	2.2	1.2
N/A	Total	1,293	100.0	18.2	\$23,728	2.2	1.2
Total	00-19	379	5.3	0.0	\$6,228	2.5	1.4
Total	20-24	649	9.1	0.0	\$24,895	2.9	1.5
Total	25-34	1,330	18.7	0.0	\$42,523	3.2	1.4
Total	35-44	1,181	16.6	0.0	\$50,785	3.4	1.4
Total	45-54	1,161	16.4	0.0	\$52,013	3.4	1.3
Total	55-64	871	12.3	0.0	\$49,252	3.4	1.2
Total	65-Up	232	3.3	0.0	\$27,433	3.2	1.2
Total	N/A	1,294	18.2	0.0	\$23,760	2.2	1.2
Total	Total	7,097	100.0	100.0	\$38,811	3.0	1.3

Note: Persons worked at any time during the year.

County Determination: Based on county of employment in which the person made the most money in the year.

N/A: Represents persons with demographic data that is unavailable.

N/A = Nonresidents, individuals for whom demographic data are not available.

Source: Demographics of Persons Working in Wyoming by County, Industry, Age, & Gender, 2000-2017.
Research & Planning, Wyoming Department of Workforce Services.

Prepared by M. Moore, Research & Planning, WY DWS, 6/12/18.

Average Earnings by Age and Gender with Place of Work in Sublette County in 2012

Gender	Age Group	Number	Age Percent	Gender Percent	Average Annual Wage	Average Quarters Worked	Average Annual Employers
Women	00-19	167	7.6	0.0	\$4,225	2.5	1.4
Women	20-24	195	8.8	0.0	\$13,999	2.9	1.7
Women	25-34	468	21.2	0.0	\$27,886	3.2	1.4
Women	35-44	436	19.8	0.0	\$33,803	3.4	1.4
Women	45-54	460	20.8	0.0	\$34,510	3.5	1.3
Women	55-64	379	17.2	0.0	\$35,097	3.5	1.3
Women	65-Up	101	4.6	0.0	\$17,916	3.3	1.2
Women	N/A	1	0.0	0.0	\$34,630	3.0	1.0
Women	Total	2,207	100.0	31.7	\$28,203	3.3	1.4
Men	00-19	191	5.6	0.0	\$6,711	2.5	1.4
Men	20-24	368	10.8	0.0	\$26,552	2.8	1.5
Men	25-34	824	24.1	0.0	\$50,237	3.2	1.3
Men	35-44	719	21.0	0.0	\$61,976	3.4	1.3
Men	45-54	657	19.2	0.0	\$67,429	3.4	1.2
Men	55-64	503	14.7	0.0	\$62,465	3.4	1.2
Men	65-Up	155	4.5	0.0	\$40,198	3.2	1.2
Men	N/A	1	0.0	0.0	\$1,462	1.0	1.0
Men	Total	3,418	100.0	49.1	\$52,359	3.2	1.3
N/A	N/A	1,343	100.0	0.0	\$22,298	2.1	1.2
N/A	Total	1,343	100.0	19.3	\$22,298	2.1	1.2
Total	00-19	358	5.1	0.0	\$5,551	2.5	1.4
Total	20-24	563	8.1	0.0	\$22,204	2.9	1.6
Total	25-34	1,292	18.5	0.0	\$42,141	3.2	1.4
Total	35-44	1,155	16.6	0.0	\$51,341	3.4	1.4
Total	45-54	1,117	16.0	0.0	\$53,872	3.4	1.3
Total	55-64	882	12.7	0.0	\$50,705	3.4	1.2
Total	65-Up	256	3.7	0.0	\$31,407	3.2	1.2
Total	N/A	1,345	19.3	0.0	\$22,291	2.1	1.2
Total	Total	6,968	100.0	100.0	\$38,914	3.0	1.3

Note: Persons worked at any time during the year.

County Determination: Based on county of employment in which the person made the most money in the year.

N/A: Represents persons with demographic data that is unavailable.

N/A = Nonresidents, individuals for whom demographic data are not available.

Source: Demographics of Persons Working in Wyoming by County, Industry, Age, & Gender, 2000-2017.

Research & Planning, Wyoming Department of Workforce Services.

Prepared by M. Moore, Research & Planning, WY DWS, 6/12/18.

Average Earnings by Age and Gender with Place of Work in Sublette County in 2013

Gender	Age Group	Number	Age Percent	Gender Percent	Average Annual Wage	Average Quarters Worked	Average Annual Employers
Women	00-19	154	7.3	0.0	\$4,066	2.5	1.5
Women	20-24	197	9.3	0.0	\$15,128	3.1	1.8
Women	25-34	421	19.9	0.0	\$28,996	3.3	1.4
Women	35-44	429	20.2	0.0	\$34,012	3.5	1.3
Women	45-54	428	20.2	0.0	\$37,051	3.5	1.4
Women	55-64	385	18.2	0.0	\$33,580	3.4	1.2
Women	65-Up	104	4.9	0.0	\$18,045	3.2	1.2
Women	N/A	1	0.0	0.0	\$32,014	3.0	1.0
Women	Total	2,119	100.0	33.0	\$28,834	3.3	1.4
Men	00-19	174	5.4	0.0	\$8,832	2.6	1.6
Men	20-24	320	10.0	0.0	\$27,172	3.0	1.6
Men	25-34	757	23.6	0.0	\$51,367	3.3	1.3
Men	35-44	666	20.7	0.0	\$67,193	3.5	1.3
Men	45-54	640	19.9	0.0	\$68,170	3.5	1.3
Men	55-64	495	15.4	0.0	\$64,393	3.4	1.2
Men	65-Up	162	5.0	0.0	\$39,180	3.2	1.1
Men	Total	3,214	100.0	50.1	\$54,673	3.3	1.3
N/A	N/A	1,086	100.0	0.0	\$24,219	2.4	1.2
N/A	Total	1,086	100.0	16.9	\$24,219	2.4	1.2
Total	00-19	328	5.1	0.0	\$6,594	2.6	1.6
Total	20-24	517	8.1	0.0	\$22,583	3.0	1.7
Total	25-34	1,178	18.4	0.0	\$43,372	3.3	1.3
Total	35-44	1,095	17.1	0.0	\$54,193	3.5	1.3
Total	45-54	1,068	16.6	0.0	\$55,699	3.5	1.3
Total	55-64	880	13.7	0.0	\$50,912	3.4	1.2
Total	65-Up	266	4.1	0.0	\$30,917	3.2	1.2
Total	N/A	1,087	16.9	0.0	\$24,226	2.4	1.2
Total	Total	6,419	100.0	100.0	\$40,991	3.1	1.3

Note: Persons worked at any time during the year.

County Determination: Based on county of employment in which the person made the most money in the year.

N/A: Represents persons with demographic data that is unavailable.

N/A = Nonresidents, individuals for whom demographic data are not available.

Source: Demographics of Persons Working in Wyoming by County, Industry, Age, & Gender, 2000-2017.
Research & Planning, Wyoming Department of Workforce Services.

Prepared by M. Moore, Research & Planning, WY DWS, 6/12/18.

Average Earnings by Age and Gender with Place of Work in Sublette County in 2014

Gender	Age Group	Number	Age Percent	Gender Percent	Average Annual Wage	Average Quarters Worked	Average Annual Employers
Women	00-19	137	6.6	0.0	\$4,299	2.5	1.4
Women	20-24	181	8.8	0.0	\$14,302	3.0	1.7
Women	25-34	431	20.8	0.0	\$28,263	3.2	1.4
Women	35-44	426	20.6	0.0	\$34,875	3.5	1.4
Women	45-54	428	20.7	0.0	\$37,530	3.5	1.3
Women	55-64	359	17.4	0.0	\$32,620	3.4	1.2
Women	65-Up	106	5.1	0.0	\$15,020	3.0	1.2
Women	Total	2,068	100.0	32.6	\$28,811	3.3	1.4
Men	00-19	155	5.0	0.0	\$7,739	2.5	1.5
Men	20-24	315	10.1	0.0	\$25,862	2.7	1.5
Men	25-34	709	22.7	0.0	\$53,502	3.2	1.4
Men	35-44	679	21.7	0.0	\$69,552	3.4	1.3
Men	45-54	610	19.5	0.0	\$70,913	3.4	1.3
Men	55-64	486	15.6	0.0	\$66,292	3.4	1.2
Men	65-Up	171	5.5	0.0	\$34,536	3.2	1.1
Men	Total	3,125	100.0	49.2	\$56,283	3.2	1.3
N/A	N/A	1,157	100.0	0.0	\$22,934	2.2	1.1
N/A	Total	1,157	100.0	18.2	\$22,934	2.2	1.1
Total	00-19	292	4.6	0.0	\$6,125	2.5	1.4
Total	20-24	496	7.8	0.0	\$21,644	2.8	1.6
Total	25-34	1,140	18.0	0.0	\$43,960	3.2	1.4
Total	35-44	1,105	17.4	0.0	\$56,183	3.4	1.4
Total	45-54	1,038	16.3	0.0	\$57,148	3.4	1.3
Total	55-64	845	13.3	0.0	\$51,986	3.4	1.2
Total	65-Up	277	4.4	0.0	\$27,067	3.1	1.2
Total	N/A	1,157	18.2	0.0	\$22,934	2.2	1.1
Total	Total	6,350	100.0	100.0	\$41,260	3.1	1.3

Note: Persons worked at any time during the year.

County Determination: Based on county of employment in which the person made the most money in the year.

N/A: Represents persons with demographic data that is unavailable.

N/A = Nonresidents, individuals for whom demographic data are not available.

Source: Demographics of Persons Working in Wyoming by County, Industry, Age, & Gender, 2000-2017.
Research & Planning, Wyoming Department of Workforce Services.

Prepared by M. Moore, Research & Planning, WY DWS, 6/12/18.

Average Earnings by Age and Gender with Place of Work in Sublette County in 2015

Gender	Age Group	Number	Age Percent	Gender Percent	Average Annual Wage	Average Quarters Worked	Average Annual Employers
Women	00-19	126	6.4	0.0	\$4,836	2.5	1.4
Women	20-24	170	8.6	0.0	\$12,455	3.0	1.6
Women	25-34	402	20.4	0.0	\$27,379	3.4	1.4
Women	35-44	424	21.5	0.0	\$34,258	3.5	1.3
Women	45-54	388	19.7	0.0	\$38,431	3.5	1.3
Women	55-64	348	17.7	0.0	\$33,435	3.5	1.2
Women	65-Up	113	5.7	0.0	\$18,627	3.2	1.2
Women	Total	1,971	100.0	34.8	\$28,874	3.3	1.3
Men	00-19	153	5.3	0.0	\$5,566	2.4	1.3
Men	20-24	271	9.5	0.0	\$26,418	3.0	1.6
Men	25-34	622	21.7	0.0	\$51,637	3.4	1.3
Men	35-44	619	21.6	0.0	\$68,105	3.4	1.3
Men	45-54	552	19.3	0.0	\$66,379	3.5	1.3
Men	55-64	473	16.5	0.0	\$61,366	3.4	1.2
Men	65-Up	172	6.0	0.0	\$34,197	3.1	1.1
Men	N/A	1	0.0	0.0	\$51,107	4.0	2.0
Men	Total	2,863	100.0	50.5	\$53,750	3.3	1.3
N/A	N/A	832	100.0	0.0	\$21,080	2.2	1.2
N/A	Total	832	100.0	14.7	\$21,080	2.2	1.2
Total	00-19	279	4.9	0.0	\$5,236	2.5	1.3
Total	20-24	441	7.8	0.0	\$21,035	3.0	1.6
Total	25-34	1,024	18.1	0.0	\$42,114	3.4	1.3
Total	35-44	1,043	18.4	0.0	\$54,346	3.5	1.3
Total	45-54	940	16.6	0.0	\$54,843	3.5	1.3
Total	55-64	821	14.5	0.0	\$49,527	3.4	1.2
Total	65-Up	285	5.0	0.0	\$28,024	3.2	1.1
Total	N/A	833	14.7	0.0	\$21,116	2.2	1.2
Total	Total	5,666	100.0	100.0	\$40,299	3.2	1.3

Note: Persons worked at any time during the year.

County Determination: Based on county of employment in which the person made the most money in the year.

N/A: Represents persons with demographic data that is unavailable.

N/A = Nonresidents, individuals for whom demographic data are not available.

Source: Demographics of Persons Working in Wyoming by County, Industry, Age, & Gender, 2000-2017.
Research & Planning, Wyoming Department of Workforce Services.

Prepared by M. Moore, Research & Planning, WY DWS, 6/12/18.

Average Earnings by Age and Gender with Place of Work in Sublette County in 2016

Gender	Age Group	Number	Age Percent	Gender Percent	Average Annual Wage	Average Quarters Worked	Average Annual Employers
Women	00-19	120	6.5	0.0	\$4,286	2.6	1.4
Women	20-24	138	7.5	0.0	\$12,849	3.1	1.7
Women	25-34	377	20.5	0.0	\$28,110	3.4	1.4
Women	35-44	406	22.1	0.0	\$35,266	3.6	1.3
Women	45-54	360	19.6	0.0	\$36,862	3.6	1.3
Women	55-64	318	17.3	0.0	\$34,371	3.6	1.2
Women	65-Up	120	6.5	0.0	\$16,368	3.0	1.1
Women	Total	1,839	100.0	36.7	\$29,020	3.4	1.3
Men	00-19	135	5.2	0.0	\$6,220	2.5	1.3
Men	20-24	209	8.1	0.0	\$20,400	2.9	1.6
Men	25-34	575	22.2	0.0	\$45,302	3.2	1.4
Men	35-44	601	23.2	0.0	\$66,487	3.4	1.3
Men	45-54	475	18.3	0.0	\$63,668	3.4	1.2
Men	55-64	430	16.6	0.0	\$62,224	3.4	1.2
Men	65-Up	169	6.5	0.0	\$31,806	3.1	1.1
Men	N/A	1	0.0	0.0	\$55,353	4.0	2.0
Men	Total	2,595	100.0	51.8	\$51,461	3.3	1.3
N/A	N/A	573	100.0	0.0	\$20,562	2.4	1.2
N/A	Total	573	100.0	11.4	\$20,562	2.4	1.2
Total	00-19	255	5.1	0.0	\$5,310	2.5	1.4
Total	20-24	347	6.9	0.0	\$17,397	3.0	1.6
Total	25-34	952	19.0	0.0	\$38,494	3.3	1.4
Total	35-44	1,007	20.1	0.0	\$53,899	3.5	1.3
Total	45-54	835	16.7	0.0	\$52,111	3.5	1.2
Total	55-64	748	14.9	0.0	\$50,383	3.5	1.2
Total	65-Up	289	5.8	0.0	\$25,396	3.0	1.1
Total	N/A	574	11.5	0.0	\$20,623	2.4	1.2
Total	Total	5,007	100.0	100.0	\$39,682	3.2	1.3

Note: Persons worked at any time during the year.

County Determination: Based on county of employment in which the person made the most money in the year.

N/A: Represents persons with demographic data that is unavailable.

N/A = Nonresidents, individuals for whom demographic data are not available.

Source: Demographics of Persons Working in Wyoming by County, Industry, Age, & Gender, 2000-2017.
Research & Planning, Wyoming Department of Workforce Services.

Prepared by M. Moore, Research & Planning, WY DWS, 6/12/18.

Average Earnings by Age and Gender with Place of Work in Sublette County in 2017

Gender	Age Group	Number	Age Percent	Gender Percent	Average Annual Wage	Average Quarters Worked	Average Annual Employers
Women	00-19	131	7.2	0.0	\$4,658	2.4	1.5
Women	20-24	149	8.2	0.0	\$12,738	3.0	1.8
Women	25-34	355	19.4	0.0	\$26,754	3.4	1.4
Women	35-44	398	21.8	0.0	\$36,624	3.5	1.3
Women	45-54	358	19.6	0.0	\$36,617	3.6	1.3
Women	55-64	314	17.2	0.0	\$35,847	3.5	1.2
Women	65-Up	123	6.7	0.0	\$19,593	3.3	1.2
Women	Total	1,828	100.0	35.3	\$29,189	3.4	1.4
Men	00-19	181	6.9	0.0	\$6,340	2.4	1.5
Men	20-24	200	7.7	0.0	\$23,656	3.0	1.6
Men	25-34	560	21.4	0.0	\$50,921	3.4	1.4
Men	35-44	607	23.2	0.0	\$71,681	3.5	1.3
Men	45-54	466	17.8	0.0	\$72,328	3.5	1.3
Men	55-64	420	16.1	0.0	\$64,631	3.4	1.2
Men	65-Up	176	6.7	0.0	\$33,133	3.1	1.1
Men	N/A	1	0.0	0.0	\$29,433	2.0	1.0
Men	Total	2,611	100.0	50.4	\$55,387	3.3	1.3
N/A	N/A	743	100.0	0.0	\$26,405	2.3	1.2
N/A	Total	743	100.0	14.3	\$26,405	2.3	1.2
Total	00-19	312	6.0	0.0	\$5,634	2.4	1.5
Total	20-24	349	6.7	0.0	\$18,995	3.0	1.7
Total	25-34	915	17.7	0.0	\$41,544	3.4	1.4
Total	35-44	1,005	19.4	0.0	\$57,798	3.5	1.3
Total	45-54	824	15.9	0.0	\$56,813	3.6	1.3
Total	55-64	734	14.2	0.0	\$52,317	3.5	1.2
Total	65-Up	299	5.8	0.0	\$27,563	3.2	1.1
Total	N/A	744	14.4	0.0	\$26,409	2.3	1.2
Total	Total	5,182	100.0	100.0	\$41,990	3.2	1.3

Note: Persons worked at any time during the year.

County Determination: Based on county of employment in which the person made the most money in the year.

N/A: Represents persons with demographic data that is unavailable.

N/A = Nonresidents, individuals for whom demographic data are not available.

Source: Demographics of Persons Working in Wyoming by County, Industry, Age, & Gender, 2000-2017.

Research & Planning, Wyoming Department of Workforce Services.

Prepared by M. Moore, Research & Planning, WY DWS, 6/12/18.