

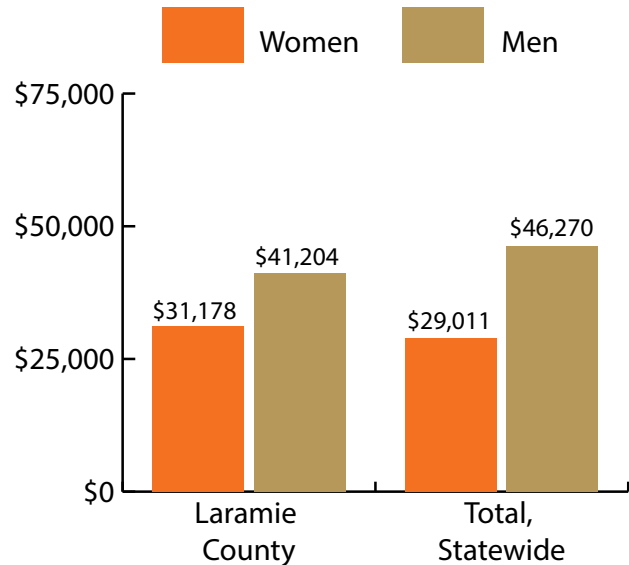
Laramie County at a Glance, 2017

Demographics of Persons Working in Wyoming by County, Industry, Age, & Gender, 2000-2017

Table: Total Number of Persons Working in Laramie County, WY, at Any Time by Gender and Age, 2016-2017

Gender	2016	2017	Change	
			N	%
Women	25,156	24,402	-754	-3.0
Men	26,630	25,810	-820	-3.1
Nonresidents	3,916	4,549	633	16.2
Total	55,702	54,761	-941	-1.7

Age	2016	2017	Change	
			N	%
00-19	3,395	3,223	-172	-5.1
20-24	5,851	5,513	-338	-5.8
25-34	12,256	11,691	-565	-4.6
35-44	9,833	9,751	-82	-0.8
45-54	9,589	9,091	-498	-5.2
55-64	8,177	8,140	-37	-0.5
65-Up	2,679	2,796	117	4.4
Nonresidents	3,922	4,556	634	16.2
Total	55,702	54,761	-941	-1.7



Women's Wages as % of Men's Wages

Laramie County: 75.7%

Total: 62.7%

Figure: Average Annual Wages by Gender, 2017

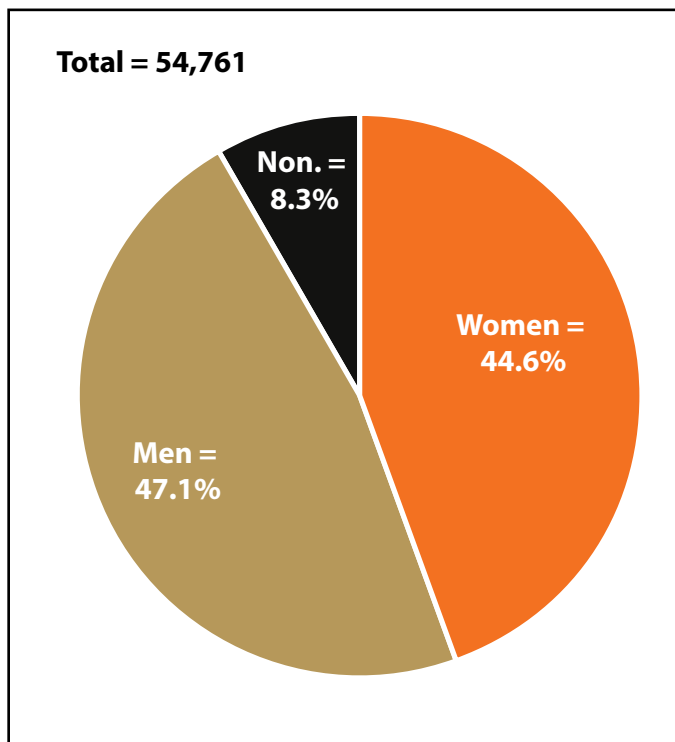


Figure: Persons Working by Gender, 2017

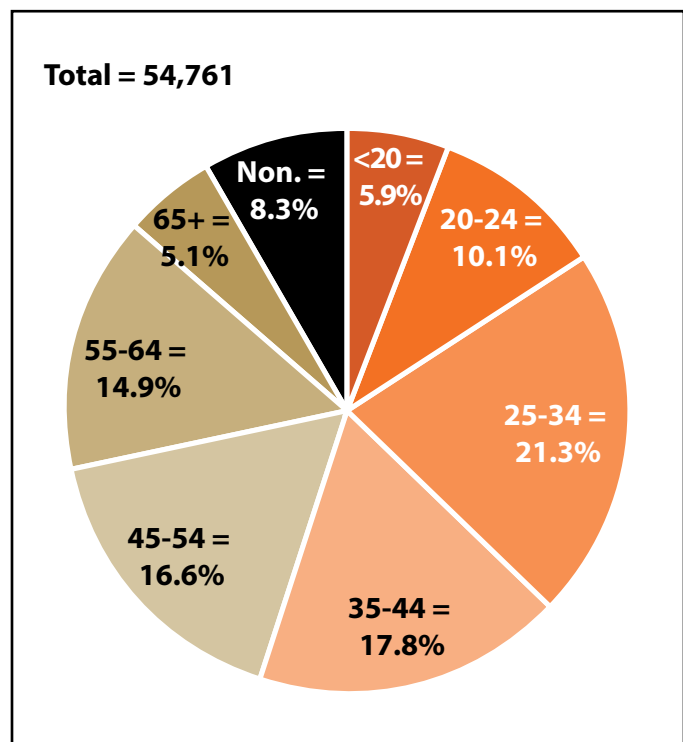


Figure: Persons Working by Age, 2017

Note: Nonresidents are individuals for whom demographic data are not available.
 Source: Demographics of Persons Working in Wyoming by County, Industry, Age, & Gender, 2000-2017. Research & Planning, Wyoming Department of Workforce Services. Prepared by M. Moore, Research & Planning, WY DWS, 6/12/18.

Persons Working in Laramie County by Gender and Age, 2000-2017

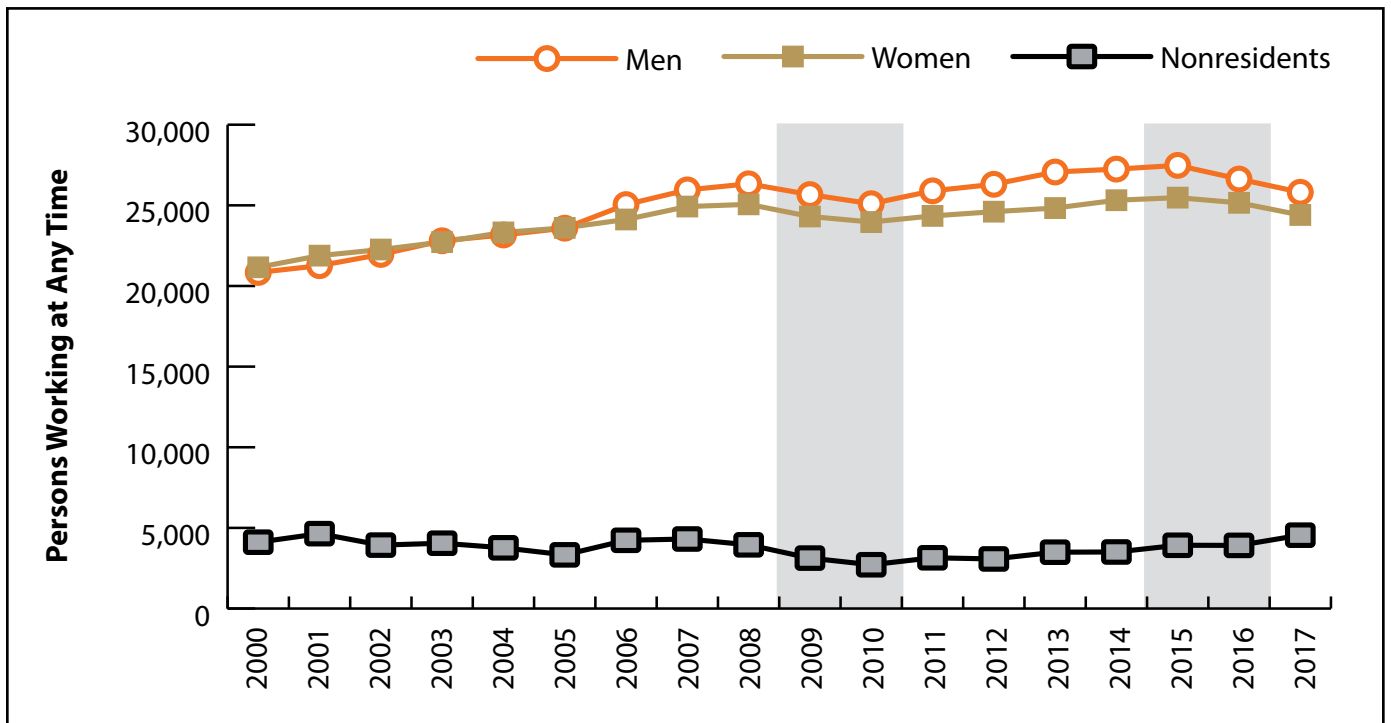


Figure: Persons Working in Laramie County at Any Time by Gender, 2000-2017

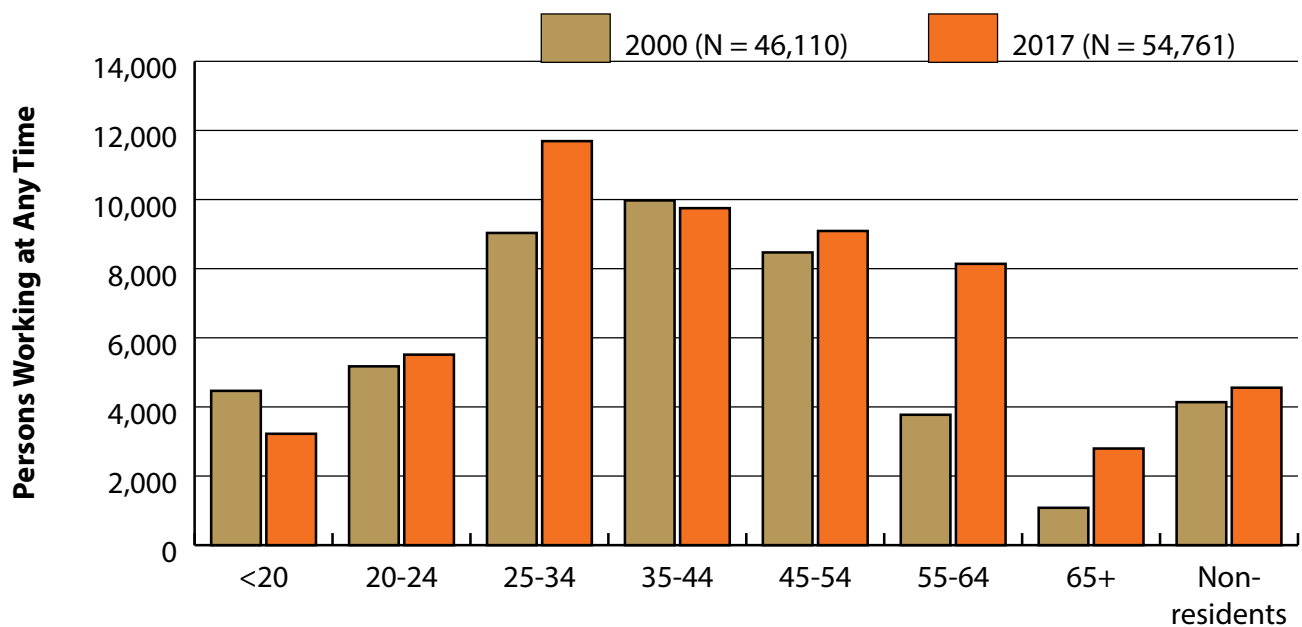


Figure: Persons Working in Laramie County at Any Time by Age, 2000-2017

Note: Nonresidents are individuals for whom demographic data are not available.
 Shaded areas indicate periods of economic downturn: 2009Q1-2010Q1 and 2015Q2-2016Q4.
 Source: Demographics of Persons Working in Wyoming by County, Industry, Age, & Gender, 2000-2017. Research & Planning, Wyoming Department of Workforce Services. Prepared by M. Moore, Research & Planning, WY DWS, 6/12/18.

Wages for Persons Working in Laramie County by Gender, 2000-2017

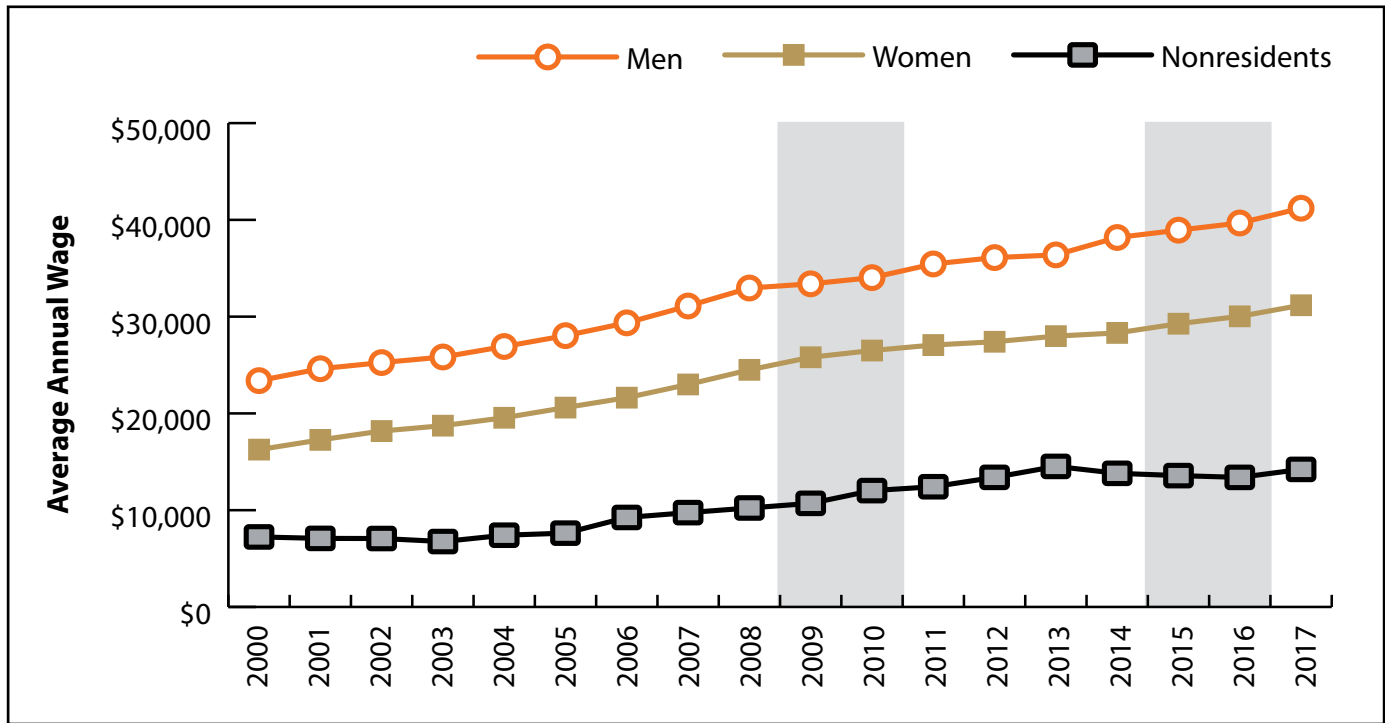


Figure: Average Annual Wage for Persons Working in Laramie County at Any Time by Age, 2000-2017

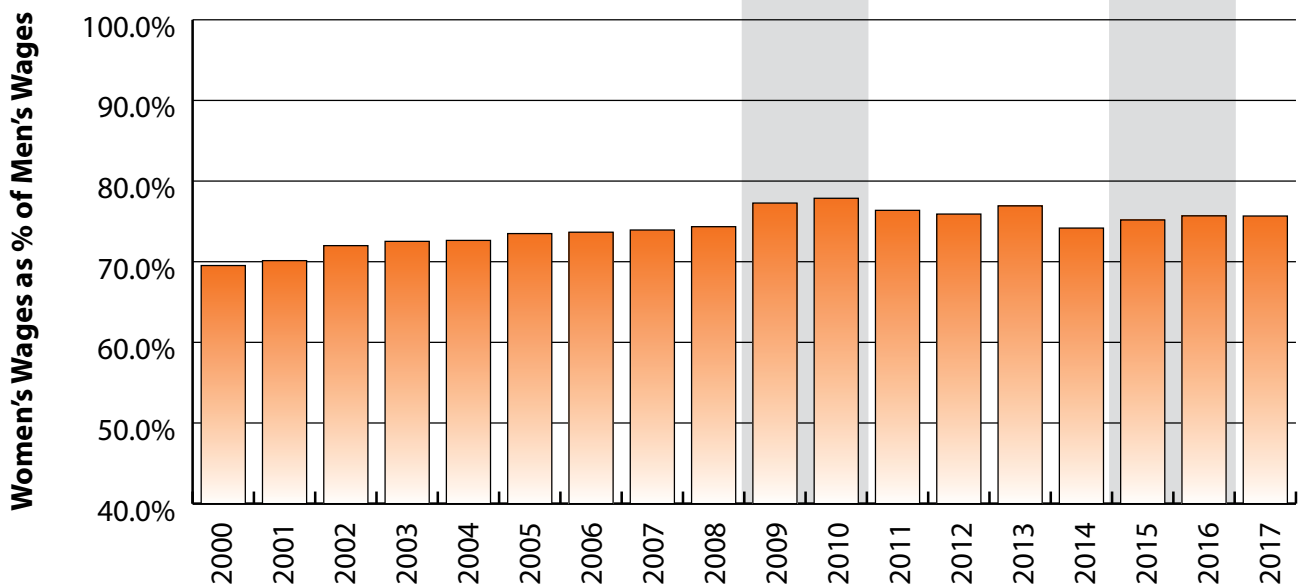


Figure: Women's Average Annual Wages as a Percent of Men's Wages for Persons Working in Laramie County at Any Time by Age, 2000-2017

Note: Nonresidents are individuals for whom demographic data are not available.

Shaded areas indicate periods of economic downturn: 2009Q1-2010Q1 and 2015Q2-2016Q4.

Source: Demographics of Persons Working in Wyoming by County, Industry, Age, & Gender, 2000-2017. Research & Planning, Wyoming Department of Workforce Services. Prepared by M. Moore, Research & Planning, WY DWS, 6/12/18.

Average Earnings by Age and Gender with Place of Work in Laramie County in 2000

Gender	Age Group	Number	Age Percent	Gender Percent	Average Annual Wage	Average Quarters Worked	Average Annual Employers
Women	00-19	2,132	10.1	0.0	\$3,329	2.7	1.8
Women	20-24	2,606	12.3	0.0	\$8,230	3.0	1.8
Women	25-34	4,517	21.3	0.0	\$15,199	3.2	1.6
Women	35-44	5,133	24.3	0.0	\$19,756	3.5	1.5
Women	45-54	4,418	20.9	0.0	\$23,639	3.6	1.3
Women	55-64	1,836	8.7	0.0	\$19,761	3.4	1.3
Women	65-Up	503	2.4	0.0	\$9,135	3.1	1.2
Women	N/A	12	0.1	0.0	\$7,573	2.0	1.0
Women	Total	21,157	100.0	45.9	\$16,260	3.3	1.5
Men	00-19	2,333	11.2	0.0	\$3,523	2.6	1.7
Men	20-24	2,568	12.3	0.0	\$9,752	2.9	1.9
Men	25-34	4,517	21.7	0.0	\$19,541	3.2	1.6
Men	35-44	4,842	23.2	0.0	\$28,644	3.4	1.4
Men	45-54	4,052	19.4	0.0	\$37,452	3.5	1.3
Men	55-64	1,937	9.3	0.0	\$34,258	3.4	1.2
Men	65-Up	578	2.8	0.0	\$15,208	3.1	1.2
Men	N/A	12	0.1	0.0	\$19,882	2.1	1.0
Men	Total	20,839	100.0	45.2	\$23,387	3.2	1.5
N/A	N/A	4,114	100.0	0.0	\$7,235	1.7	1.1
N/A	Total	4,114	100.0	8.9	\$7,235	1.7	1.1
Total	00-19	4,465	9.7	0.0	\$3,430	2.6	1.8
Total	20-24	5,174	11.2	0.0	\$8,985	3.0	1.9
Total	25-34	9,034	19.6	0.0	\$17,370	3.2	1.6
Total	35-44	9,975	21.6	0.0	\$24,071	3.4	1.4
Total	45-54	8,470	18.4	0.0	\$30,247	3.5	1.3
Total	55-64	3,773	8.2	0.0	\$27,204	3.4	1.2
Total	65-Up	1,081	2.3	0.0	\$12,382	3.1	1.2
Total	N/A	4,138	9.0	0.0	\$7,272	1.7	1.1
Total	Total	46,110	100.0	100.0	\$18,676	3.1	1.5

Note: Persons worked at any time during the year.

County Determination: Based on county of employment in which the person made the most money in the year.

N/A: Represents persons with demographic data that is unavailable.

N/A = Nonresidents, individuals for whom demographic data are not available.

Source: Demographics of Persons Working in Wyoming by County, Industry, Age, & Gender, 2000-2017.

Research & Planning, Wyoming Department of Workforce Services.

Prepared by M. Moore, Research & Planning, WY DWS, 6/12/18.

Average Earnings by Age and Gender with Place of Work in Laramie County in 2001

Gender	Age Group	Number	Age Percent	Gender Percent	Average Annual Wage	Average Quarters Worked	Average Annual Employers
Women	00-19	2,169	9.9	0.0	\$3,937	2.6	1.7
Women	20-24	2,727	12.5	0.0	\$8,858	3.0	1.8
Women	25-34	4,531	20.7	0.0	\$16,653	3.2	1.6
Women	35-44	5,244	24.0	0.0	\$20,415	3.4	1.5
Women	45-54	4,620	21.1	0.0	\$24,693	3.5	1.3
Women	55-64	2,035	9.3	0.0	\$21,236	3.4	1.2
Women	65-Up	539	2.5	0.0	\$9,583	3.0	1.2
Women	N/A	16	0.1	0.0	\$6,866	1.8	1.0
Women	Total	21,881	100.0	45.8	\$17,265	3.3	1.5
Men	00-19	2,272	10.7	0.0	\$3,927	2.6	1.7
Men	20-24	2,666	12.5	0.0	\$10,359	2.9	1.9
Men	25-34	4,523	21.3	0.0	\$20,891	3.2	1.6
Men	35-44	4,900	23.0	0.0	\$29,521	3.3	1.4
Men	45-54	4,206	19.8	0.0	\$38,398	3.4	1.3
Men	55-64	2,079	9.8	0.0	\$36,586	3.4	1.2
Men	65-Up	606	2.9	0.0	\$16,452	3.1	1.1
Men	N/A	8	0.0	0.0	\$18,522	1.6	1.0
Men	Total	21,260	100.0	44.5	\$24,617	3.2	1.5
N/A	N/A	4,643	100.0	0.0	\$7,084	1.5	1.1
N/A	Total	4,643	100.0	9.7	\$7,084	1.5	1.1
Total	00-19	4,441	9.3	0.0	\$3,932	2.6	1.7
Total	20-24	5,393	11.3	0.0	\$9,600	2.9	1.9
Total	25-34	9,054	18.9	0.0	\$18,770	3.2	1.6
Total	35-44	10,144	21.2	0.0	\$24,813	3.3	1.4
Total	45-54	8,826	18.5	0.0	\$31,224	3.5	1.3
Total	55-64	4,114	8.6	0.0	\$28,993	3.4	1.2
Total	65-Up	1,145	2.4	0.0	\$13,218	3.1	1.2
Total	N/A	4,667	9.8	0.0	\$7,102	1.5	1.1
Total	Total	47,784	100.0	100.0	\$19,547	3.1	1.5

Note: Persons worked at any time during the year.

County Determination: Based on county of employment in which the person made the most money in the year.

N/A: Represents persons with demographic data that is unavailable.

N/A = Nonresidents, individuals for whom demographic data are not available.

Source: Demographics of Persons Working in Wyoming by County, Industry, Age, & Gender, 2000-2017.

Research & Planning, Wyoming Department of Workforce Services.

Prepared by M. Moore, Research & Planning, WY DWS, 6/12/18.

Average Earnings by Age and Gender with Place of Work in Laramie County in 2002

Gender	Age Group	Number	Age Percent	Gender Percent	Average Annual Wage	Average Quarters Worked	Average Annual Employers
Women	00-19	2,218	10.0	0.0	\$3,506	2.6	1.7
Women	20-24	2,780	12.5	0.0	\$9,029	3.0	1.8
Women	25-34	4,626	20.8	0.0	\$17,314	3.3	1.6
Women	35-44	5,130	23.0	0.0	\$21,840	3.4	1.4
Women	45-54	4,750	21.3	0.0	\$25,910	3.5	1.3
Women	55-64	2,208	9.9	0.0	\$22,832	3.5	1.2
Women	65-Up	540	2.4	0.0	\$11,275	3.2	1.1
Women	N/A	9	0.0	0.0	\$12,422	1.8	1.0
Women	Total	22,261	100.0	46.2	\$18,180	3.3	1.5
Men	00-19	2,299	10.5	0.0	\$3,727	2.5	1.7
Men	20-24	2,727	12.4	0.0	\$9,924	2.8	1.8
Men	25-34	4,754	21.7	0.0	\$21,376	3.2	1.6
Men	35-44	4,949	22.5	0.0	\$30,459	3.3	1.4
Men	45-54	4,303	19.6	0.0	\$39,351	3.5	1.3
Men	55-64	2,277	10.4	0.0	\$37,578	3.4	1.2
Men	65-Up	640	2.9	0.0	\$17,911	3.2	1.1
Men	N/A	7	0.0	0.0	\$10,658	1.9	1.0
Men	Total	21,956	100.0	45.6	\$25,252	3.2	1.5
N/A	N/A	3,933	100.0	0.0	\$7,071	1.6	1.1
N/A	Total	3,933	100.0	8.2	\$7,071	1.6	1.1
Total	00-19	4,517	9.4	0.0	\$3,619	2.6	1.7
Total	20-24	5,507	11.4	0.0	\$9,472	2.9	1.8
Total	25-34	9,380	19.5	0.0	\$19,373	3.2	1.6
Total	35-44	10,079	20.9	0.0	\$26,072	3.4	1.4
Total	45-54	9,053	18.8	0.0	\$32,299	3.5	1.3
Total	55-64	4,485	9.3	0.0	\$30,319	3.4	1.2
Total	65-Up	1,180	2.5	0.0	\$14,874	3.2	1.1
Total	N/A	3,949	8.2	0.0	\$7,090	1.6	1.1
Total	Total	48,150	100.0	100.0	\$20,497	3.1	1.4

Note: Persons worked at any time during the year.

County Determination: Based on county of employment in which the person made the most money in the year.

N/A: Represents persons with demographic data that is unavailable.

N/A = Nonresidents, individuals for whom demographic data are not available.

Source: Demographics of Persons Working in Wyoming by County, Industry, Age, & Gender, 2000-2017.

Research & Planning, Wyoming Department of Workforce Services.

Prepared by M. Moore, Research & Planning, WY DWS, 6/12/18.

Average Earnings by Age and Gender with Place of Work in Laramie County in 2003

Gender	Age Group	Number	Age Percent	Gender Percent	Average Annual Wage	Average Quarters Worked	Average Annual Employers
Women	00-19	2,245	9.9	0.0	\$3,732	2.7	1.7
Women	20-24	2,962	13.0	0.0	\$9,171	2.9	1.8
Women	25-34	4,679	20.6	0.0	\$17,815	3.3	1.5
Women	35-44	4,981	21.9	0.0	\$22,620	3.4	1.4
Women	45-54	4,895	21.5	0.0	\$26,641	3.5	1.3
Women	55-64	2,325	10.2	0.0	\$24,149	3.5	1.2
Women	65-Up	628	2.8	0.0	\$11,862	3.1	1.1
Women	N/A	9	0.0	0.0	\$11,548	1.8	1.0
Women	Total	22,724	100.0	45.8	\$18,733	3.3	1.4
Men	00-19	2,198	9.6	0.0	\$3,896	2.6	1.6
Men	20-24	2,991	13.1	0.0	\$10,266	2.9	1.8
Men	25-34	4,922	21.6	0.0	\$22,004	3.2	1.6
Men	35-44	5,001	21.9	0.0	\$31,232	3.3	1.4
Men	45-54	4,595	20.2	0.0	\$38,551	3.4	1.3
Men	55-64	2,423	10.6	0.0	\$39,216	3.4	1.2
Men	65-Up	666	2.9	0.0	\$19,519	3.2	1.1
Men	N/A	6	0.0	0.0	\$7,297	1.3	1.0
Men	Total	22,802	100.0	46.0	\$25,830	3.2	1.4
N/A	N/A	4,051	100.0	0.0	\$6,758	1.6	1.1
N/A	Total	4,051	100.0	8.2	\$6,758	1.6	1.1
Total	00-19	4,443	9.0	0.0	\$3,813	2.6	1.7
Total	20-24	5,953	12.0	0.0	\$9,721	2.9	1.8
Total	25-34	9,601	19.4	0.0	\$19,962	3.2	1.5
Total	35-44	9,982	20.1	0.0	\$26,935	3.4	1.4
Total	45-54	9,490	19.1	0.0	\$32,408	3.5	1.3
Total	55-64	4,748	9.6	0.0	\$31,838	3.5	1.2
Total	65-Up	1,294	2.6	0.0	\$15,803	3.1	1.1
Total	N/A	4,066	8.2	0.0	\$6,769	1.6	1.1
Total	Total	49,577	100.0	100.0	\$21,018	3.1	1.4

Note: Persons worked at any time during the year.

County Determination: Based on county of employment in which the person made the most money in the year.

N/A: Represents persons with demographic data that is unavailable.

N/A = Nonresidents, individuals for whom demographic data are not available.

Source: Demographics of Persons Working in Wyoming by County, Industry, Age, & Gender, 2000-2017.

Research & Planning, Wyoming Department of Workforce Services.

Prepared by M. Moore, Research & Planning, WY DWS, 6/12/18.

Average Earnings by Age and Gender with Place of Work in Laramie County in 2004

Gender	Age Group	Number	Age Percent	Gender Percent	Average Annual Wage	Average Quarters Worked	Average Annual Employers
Women	00-19	2,266	9.7	0.0	\$3,852	2.7	1.7
Women	20-24	3,055	13.1	0.0	\$9,392	3.0	1.8
Women	25-34	4,787	20.5	0.0	\$18,296	3.3	1.5
Women	35-44	4,973	21.3	0.0	\$23,724	3.5	1.4
Women	45-54	4,996	21.4	0.0	\$27,869	3.6	1.3
Women	55-64	2,582	11.1	0.0	\$25,350	3.5	1.2
Women	65-Up	657	2.8	0.0	\$12,514	3.2	1.1
Women	N/A	6	0.0	0.0	\$13,337	1.8	1.0
Women	Total	23,322	100.0	46.4	\$19,551	3.3	1.5
Men	00-19	2,121	9.2	0.0	\$4,039	2.6	1.7
Men	20-24	3,197	13.8	0.0	\$10,533	3.0	1.8
Men	25-34	4,997	21.6	0.0	\$22,819	3.2	1.5
Men	35-44	4,877	21.1	0.0	\$32,941	3.4	1.4
Men	45-54	4,680	20.2	0.0	\$39,989	3.5	1.3
Men	55-64	2,581	11.1	0.0	\$40,931	3.5	1.2
Men	65-Up	707	3.1	0.0	\$19,360	3.2	1.1
Men	N/A	4	0.0	0.0	\$9,392	1.5	1.3
Men	Total	23,164	100.0	46.1	\$26,914	3.2	1.4
N/A	N/A	3,765	100.0	0.0	\$7,413	1.7	1.1
N/A	Total	3,765	100.0	7.5	\$7,413	1.7	1.1
Total	00-19	4,387	8.7	0.0	\$3,942	2.7	1.7
Total	20-24	6,252	12.4	0.0	\$9,975	3.0	1.8
Total	25-34	9,784	19.5	0.0	\$20,606	3.3	1.5
Total	35-44	9,850	19.6	0.0	\$28,288	3.4	1.4
Total	45-54	9,676	19.3	0.0	\$33,731	3.5	1.3
Total	55-64	5,163	10.3	0.0	\$33,139	3.5	1.2
Total	65-Up	1,364	2.7	0.0	\$16,063	3.2	1.1
Total	N/A	3,775	7.5	0.0	\$7,425	1.7	1.1
Total	Total	50,251	100.0	100.0	\$22,036	3.2	1.4

Note: Persons worked at any time during the year.

County Determination: Based on county of employment in which the person made the most money in the year.

N/A: Represents persons with demographic data that is unavailable.

N/A = Nonresidents, individuals for whom demographic data are not available.

Source: Demographics of Persons Working in Wyoming by County, Industry, Age, & Gender, 2000-2017.

Research & Planning, Wyoming Department of Workforce Services.

Prepared by M. Moore, Research & Planning, WY DWS, 6/12/18.

Average Earnings by Age and Gender with Place of Work in Laramie County in 2005

Gender	Age Group	Number	Age Percent	Gender Percent	Average Annual Wage	Average Quarters Worked	Average Annual Employers
Women	00-19	2,206	9.3	0.0	\$4,077	2.7	1.8
Women	20-24	3,142	13.3	0.0	\$9,848	3.0	1.8
Women	25-34	4,826	20.4	0.0	\$18,930	3.3	1.5
Women	35-44	4,886	20.7	0.0	\$25,269	3.5	1.4
Women	45-54	5,060	21.4	0.0	\$28,992	3.6	1.3
Women	55-64	2,773	11.7	0.0	\$27,273	3.5	1.2
Women	65-Up	705	3.0	0.0	\$12,902	3.2	1.2
Women	N/A	6	0.0	0.0	\$16,903	2.7	1.5
Women	Total	23,604	100.0	46.7	\$20,602	3.3	1.5
Men	00-19	2,163	9.2	0.0	\$4,107	2.6	1.7
Men	20-24	3,207	13.6	0.0	\$10,952	3.0	1.8
Men	25-34	5,039	21.4	0.0	\$23,246	3.2	1.6
Men	35-44	4,876	20.7	0.0	\$34,809	3.4	1.4
Men	45-54	4,803	20.4	0.0	\$40,750	3.5	1.3
Men	55-64	2,725	11.6	0.0	\$43,323	3.5	1.2
Men	65-Up	768	3.3	0.0	\$21,314	3.2	1.1
Men	N/A	3	0.0	0.0	\$47,384	3.3	1.7
Men	Total	23,584	100.0	46.7	\$28,034	3.2	1.5
N/A	N/A	3,329	100.0	0.0	\$7,627	1.8	1.2
N/A	Total	3,329	100.0	6.6	\$7,627	1.8	1.2
Total	00-19	4,369	8.6	0.0	\$4,092	2.7	1.7
Total	20-24	6,349	12.6	0.0	\$10,405	3.0	1.8
Total	25-34	9,865	19.5	0.0	\$21,135	3.2	1.5
Total	35-44	9,762	19.3	0.0	\$30,034	3.4	1.4
Total	45-54	9,863	19.5	0.0	\$34,718	3.5	1.3
Total	55-64	5,498	10.9	0.0	\$35,228	3.5	1.2
Total	65-Up	1,473	2.9	0.0	\$17,288	3.2	1.1
Total	N/A	3,338	6.6	0.0	\$7,679	1.8	1.2
Total	Total	50,517	100.0	100.0	\$23,217	3.2	1.4

Note: Persons worked at any time during the year.

County Determination: Based on county of employment in which the person made the most money in the year.

N/A: Represents persons with demographic data that is unavailable.

N/A = Nonresidents, individuals for whom demographic data are not available.

Source: Demographics of Persons Working in Wyoming by County, Industry, Age, & Gender, 2000-2017.

Research & Planning, Wyoming Department of Workforce Services.

Prepared by M. Moore, Research & Planning, WY DWS, 6/12/18.

Average Earnings by Age and Gender with Place of Work in Laramie County in 2006

Gender	Age Group	Number	Age Percent	Gender Percent	Average Annual Wage	Average Quarters Worked	Average Annual Employers
Women	00-19	2,157	8.9	0.0	\$4,067	2.7	1.8
Women	20-24	3,163	13.1	0.0	\$10,373	3.0	1.8
Women	25-34	4,917	20.4	0.0	\$20,128	3.3	1.5
Women	35-44	4,898	20.3	0.0	\$25,947	3.4	1.4
Women	45-54	5,249	21.8	0.0	\$30,052	3.6	1.3
Women	55-64	2,997	12.4	0.0	\$28,628	3.5	1.2
Women	65-Up	735	3.0	0.0	\$14,133	3.2	1.1
Women	N/A	7	0.0	0.0	\$17,789	2.0	1.0
Women	Total	24,123	100.0	45.2	\$21,626	3.3	1.5
Men	00-19	2,278	9.1	0.0	\$4,397	2.6	1.7
Men	20-24	3,249	13.0	0.0	\$12,033	2.9	1.8
Men	25-34	5,307	21.2	0.0	\$24,531	3.2	1.5
Men	35-44	5,213	20.8	0.0	\$35,035	3.3	1.4
Men	45-54	5,112	20.4	0.0	\$41,826	3.4	1.3
Men	55-64	3,063	12.2	0.0	\$45,481	3.5	1.2
Men	65-Up	820	3.3	0.0	\$24,605	3.2	1.2
Men	N/A	4	0.0	0.0	\$26,151	2.5	1.0
Men	Total	25,046	100.0	46.9	\$29,359	3.2	1.5
N/A	N/A	4,231	100.0	0.0	\$9,248	1.8	1.1
N/A	Total	4,231	100.0	7.9	\$9,248	1.8	1.1
Total	00-19	4,435	8.3	0.0	\$4,236	2.6	1.7
Total	20-24	6,412	12.0	0.0	\$11,214	3.0	1.8
Total	25-34	10,224	19.1	0.0	\$22,413	3.2	1.5
Total	35-44	10,111	18.9	0.0	\$30,632	3.4	1.4
Total	45-54	10,361	19.4	0.0	\$35,861	3.5	1.3
Total	55-64	6,060	11.3	0.0	\$37,146	3.5	1.2
Total	65-Up	1,555	2.9	0.0	\$19,655	3.2	1.1
Total	N/A	4,242	7.9	0.0	\$9,279	1.8	1.1
Total	Total	53,400	100.0	100.0	\$24,273	3.2	1.4

Note: Persons worked at any time during the year.

County Determination: Based on county of employment in which the person made the most money in the year.

N/A: Represents persons with demographic data that is unavailable.

N/A = Nonresidents, individuals for whom demographic data are not available.

Source: Demographics of Persons Working in Wyoming by County, Industry, Age, & Gender, 2000-2017.
Research & Planning, Wyoming Department of Workforce Services.

Prepared by M. Moore, Research & Planning, WY DWS, 6/12/18.

Average Earnings by Age and Gender with Place of Work in Laramie County in 2007

Gender	Age Group	Number	Age Percent	Gender Percent	Average Annual Wage	Average Quarters Worked	Average Annual Employers
Women	00-19	2,166	8.7	0.0	\$4,216	2.7	1.8
Women	20-24	3,295	13.2	0.0	\$10,681	3.0	1.8
Women	25-34	5,096	20.4	0.0	\$21,599	3.3	1.5
Women	35-44	4,888	19.6	0.0	\$27,808	3.5	1.5
Women	45-54	5,436	21.8	0.0	\$31,528	3.6	1.4
Women	55-64	3,231	13.0	0.0	\$30,795	3.6	1.2
Women	65-Up	808	3.2	0.0	\$14,658	3.2	1.1
Women	N/A	5	0.0	0.0	\$7,247	1.8	1.0
Women	Total	24,925	100.0	45.2	\$22,992	3.3	1.5
Men	00-19	2,321	8.9	0.0	\$4,524	2.6	1.7
Men	20-24	3,304	12.7	0.0	\$12,995	3.0	1.9
Men	25-34	5,632	21.7	0.0	\$26,146	3.2	1.6
Men	35-44	5,189	20.0	0.0	\$37,966	3.4	1.4
Men	45-54	5,326	20.5	0.0	\$43,422	3.4	1.3
Men	55-64	3,291	12.7	0.0	\$47,456	3.5	1.2
Men	65-Up	891	3.4	0.0	\$24,761	3.3	1.2
Men	N/A	4	0.0	0.0	\$14,179	2.0	1.3
Men	Total	25,958	100.0	47.0	\$31,099	3.2	1.5
N/A	N/A	4,312	100.0	0.0	\$9,747	1.8	1.2
N/A	Total	4,312	100.0	7.8	\$9,747	1.8	1.2
Total	00-19	4,487	8.1	0.0	\$4,375	2.6	1.8
Total	20-24	6,599	12.0	0.0	\$11,840	3.0	1.8
Total	25-34	10,728	19.4	0.0	\$23,986	3.2	1.6
Total	35-44	10,077	18.3	0.0	\$33,039	3.4	1.4
Total	45-54	10,762	19.5	0.0	\$37,414	3.5	1.3
Total	55-64	6,522	11.8	0.0	\$39,203	3.5	1.2
Total	65-Up	1,699	3.1	0.0	\$19,956	3.2	1.2
Total	N/A	4,321	7.8	0.0	\$9,748	1.8	1.2
Total	Total	55,195	100.0	100.0	\$25,770	3.2	1.5

Note: Persons worked at any time during the year.

County Determination: Based on county of employment in which the person made the most money in the year.

N/A: Represents persons with demographic data that is unavailable.

N/A = Nonresidents, individuals for whom demographic data are not available.

Source: Demographics of Persons Working in Wyoming by County, Industry, Age, & Gender, 2000-2017.

Research & Planning, Wyoming Department of Workforce Services.

Prepared by M. Moore, Research & Planning, WY DWS, 6/12/18.

Average Earnings by Age and Gender with Place of Work in Laramie County in 2008

Gender	Age Group	Number	Age Percent	Gender Percent	Average Annual Wage	Average Quarters Worked	Average Annual Employers
Women	00-19	2,107	8.4	0.0	\$4,592	2.7	1.7
Women	20-24	3,279	13.1	0.0	\$11,452	3.0	1.8
Women	25-34	5,232	20.9	0.0	\$23,230	3.3	1.5
Women	35-44	4,726	18.9	0.0	\$29,736	3.5	1.4
Women	45-54	5,433	21.7	0.0	\$32,842	3.6	1.3
Women	55-64	3,420	13.6	0.0	\$32,898	3.6	1.2
Women	65-Up	862	3.4	0.0	\$15,953	3.2	1.1
Women	N/A	2	0.0	0.0	\$14,608	1.5	1.0
Women	Total	25,061	100.0	45.3	\$24,501	3.4	1.4
Men	00-19	2,199	8.4	0.0	\$4,803	2.6	1.6
Men	20-24	3,191	12.1	0.0	\$13,756	2.9	1.7
Men	25-34	5,971	22.7	0.0	\$28,092	3.3	1.5
Men	35-44	5,135	19.5	0.0	\$39,551	3.4	1.4
Men	45-54	5,400	20.5	0.0	\$45,179	3.4	1.3
Men	55-64	3,459	13.1	0.0	\$49,531	3.5	1.2
Men	65-Up	978	3.7	0.0	\$27,903	3.2	1.1
Men	N/A	2	0.0	0.0	\$24,361	2.5	1.0
Men	Total	26,335	100.0	47.6	\$32,957	3.3	1.4
N/A	N/A	3,951	100.0	0.0	\$10,228	1.9	1.2
N/A	Total	3,951	100.0	7.1	\$10,228	1.9	1.2
Total	00-19	4,306	7.8	0.0	\$4,700	2.7	1.6
Total	20-24	6,470	11.7	0.0	\$12,589	3.0	1.8
Total	25-34	11,203	20.2	0.0	\$25,822	3.3	1.5
Total	35-44	9,861	17.8	0.0	\$34,847	3.4	1.4
Total	45-54	10,833	19.6	0.0	\$38,992	3.5	1.3
Total	55-64	6,879	12.4	0.0	\$41,262	3.6	1.2
Total	65-Up	1,840	3.3	0.0	\$22,305	3.2	1.1
Total	N/A	3,955	7.1	0.0	\$10,237	1.9	1.2
Total	Total	55,347	100.0	100.0	\$27,506	3.2	1.4

Note: Persons worked at any time during the year.

County Determination: Based on county of employment in which the person made the most money in the year.

N/A: Represents persons with demographic data that is unavailable.

N/A = Nonresidents, individuals for whom demographic data are not available.

Source: Demographics of Persons Working in Wyoming by County, Industry, Age, & Gender, 2000-2017.
Research & Planning, Wyoming Department of Workforce Services.

Prepared by M. Moore, Research & Planning, WY DWS, 6/12/18.

Average Earnings by Age and Gender with Place of Work in Laramie County in 2009

Gender	Age Group	Number	Age Percent	Gender Percent	Average Annual Wage	Average Quarters Worked	Average Annual Employers
Women	00-19	1,769	7.3	0.0	\$4,482	2.7	1.5
Women	20-24	3,043	12.5	0.0	\$11,492	3.1	1.6
Women	25-34	5,302	21.8	0.0	\$23,868	3.3	1.4
Women	35-44	4,479	18.4	0.0	\$31,404	3.6	1.3
Women	45-54	5,331	21.9	0.0	\$34,040	3.6	1.2
Women	55-64	3,499	14.4	0.0	\$34,238	3.6	1.2
Women	65-Up	885	3.6	0.0	\$17,880	3.4	1.1
Women	N/A	2	0.0	0.0	\$29,835	2.5	1.0
Women	Total	24,310	100.0	45.8	\$25,802	3.4	1.3
Men	00-19	1,717	6.7	0.0	\$4,652	2.7	1.4
Men	20-24	3,077	12.0	0.0	\$13,237	2.9	1.5
Men	25-34	5,969	23.3	0.0	\$27,288	3.2	1.4
Men	35-44	4,995	19.5	0.0	\$40,020	3.4	1.3
Men	45-54	5,377	20.9	0.0	\$44,155	3.4	1.2
Men	55-64	3,535	13.8	0.0	\$50,515	3.5	1.1
Men	65-Up	995	3.9	0.0	\$29,664	3.3	1.1
Men	N/A	2	0.0	0.0	\$5,038	1.5	1.0
Men	Total	25,667	100.0	48.3	\$33,390	3.3	1.3
N/A	N/A	3,128	100.0	0.0	\$10,707	2.0	1.1
N/A	Total	3,128	100.0	5.9	\$10,707	2.0	1.1
Total	00-19	3,486	6.6	0.0	\$4,566	2.7	1.5
Total	20-24	6,120	11.5	0.0	\$12,370	3.0	1.6
Total	25-34	11,271	21.2	0.0	\$25,679	3.3	1.4
Total	35-44	9,474	17.8	0.0	\$35,946	3.5	1.3
Total	45-54	10,708	20.2	0.0	\$39,119	3.5	1.2
Total	55-64	7,034	13.2	0.0	\$42,418	3.6	1.2
Total	65-Up	1,880	3.5	0.0	\$24,117	3.3	1.1
Total	N/A	3,132	5.9	0.0	\$10,716	2.0	1.1
Total	Total	53,105	100.0	100.0	\$28,580	3.3	1.3

Note: Persons worked at any time during the year.

County Determination: Based on county of employment in which the person made the most money in the year.

N/A: Represents persons with demographic data that is unavailable.

N/A = Nonresidents, individuals for whom demographic data are not available.

Source: Demographics of Persons Working in Wyoming by County, Industry, Age, & Gender, 2000-2017.
Research & Planning, Wyoming Department of Workforce Services.

Prepared by M. Moore, Research & Planning, WY DWS, 6/12/18.

Average Earnings by Age and Gender with Place of Work in Laramie County in 2010

Gender	Age Group	Number	Age Percent	Gender Percent	Average Annual Wage	Average Quarters Worked	Average Annual Employers
Women	00-19	1,587	6.6	0.0	\$4,374	2.6	1.4
Women	20-24	2,904	12.1	0.0	\$11,716	3.1	1.5
Women	25-34	5,361	22.4	0.0	\$24,297	3.4	1.4
Women	35-44	4,401	18.4	0.0	\$32,167	3.5	1.3
Women	45-54	5,160	21.5	0.0	\$34,818	3.6	1.3
Women	55-64	3,629	15.1	0.0	\$34,536	3.6	1.2
Women	65-Up	919	3.8	0.0	\$18,689	3.3	1.1
Women	N/A	4	0.0	0.0	\$18,178	2.0	1.0
Women	Total	23,965	100.0	46.3	\$26,498	3.4	1.3
Men	00-19	1,530	6.1	0.0	\$4,574	2.5	1.4
Men	20-24	2,970	11.8	0.0	\$12,751	2.9	1.6
Men	25-34	5,919	23.6	0.0	\$27,216	3.2	1.4
Men	35-44	4,891	19.5	0.0	\$40,252	3.4	1.3
Men	45-54	5,257	20.9	0.0	\$45,276	3.4	1.2
Men	55-64	3,512	14.0	0.0	\$51,402	3.5	1.1
Men	65-Up	1,020	4.1	0.0	\$32,104	3.3	1.1
Men	N/A	2	0.0	0.0	\$33,323	2.0	1.0
Men	Total	25,101	100.0	48.5	\$34,030	3.3	1.3
N/A	N/A	2,715	100.0	0.0	\$12,022	2.1	1.1
N/A	Total	2,715	100.0	5.2	\$12,022	2.1	1.1
Total	00-19	3,117	6.0	0.0	\$4,472	2.6	1.4
Total	20-24	5,874	11.3	0.0	\$12,239	3.0	1.5
Total	25-34	11,280	21.8	0.0	\$25,829	3.3	1.4
Total	35-44	9,292	17.9	0.0	\$36,423	3.4	1.3
Total	45-54	10,417	20.1	0.0	\$40,096	3.5	1.2
Total	55-64	7,141	13.8	0.0	\$42,831	3.6	1.2
Total	65-Up	1,939	3.7	0.0	\$25,746	3.3	1.1
Total	N/A	2,721	5.3	0.0	\$12,047	2.1	1.1
Total	Total	51,781	100.0	100.0	\$29,390	3.3	1.3

Note: Persons worked at any time during the year.

County Determination: Based on county of employment in which the person made the most money in the year.

N/A: Represents persons with demographic data that is unavailable.

N/A = Nonresidents, individuals for whom demographic data are not available.

Source: Demographics of Persons Working in Wyoming by County, Industry, Age, & Gender, 2000-2017.
Research & Planning, Wyoming Department of Workforce Services.

Prepared by M. Moore, Research & Planning, WY DWS, 6/12/18.

Average Earnings by Age and Gender with Place of Work in Laramie County in 2011

Gender	Age Group	Number	Age Percent	Gender Percent	Average Annual Wage	Average Quarters Worked	Average Annual Employers
Women	00-19	1,611	6.6	0.0	\$4,479	2.7	1.5
Women	20-24	2,982	12.2	0.0	\$11,263	3.0	1.6
Women	25-34	5,584	22.9	0.0	\$25,033	3.3	1.4
Women	35-44	4,455	18.3	0.0	\$33,222	3.5	1.3
Women	45-54	5,038	20.7	0.0	\$35,695	3.6	1.3
Women	55-64	3,701	15.2	0.0	\$35,303	3.6	1.2
Women	65-Up	968	4.0	0.0	\$20,444	3.3	1.1
Women	N/A	5	0.0	0.0	\$16,507	2.6	1.0
Women	Total	24,344	100.0	45.6	\$27,068	3.4	1.3
Men	00-19	1,610	6.2	0.0	\$4,904	2.5	1.4
Men	20-24	3,077	11.9	0.0	\$13,222	2.9	1.6
Men	25-34	6,169	23.8	0.0	\$28,617	3.2	1.4
Men	35-44	4,969	19.2	0.0	\$42,598	3.4	1.3
Men	45-54	5,301	20.5	0.0	\$47,326	3.4	1.2
Men	55-64	3,669	14.2	0.0	\$52,329	3.5	1.2
Men	65-Up	1,101	4.3	0.0	\$34,659	3.3	1.1
Men	N/A	2	0.0	0.0	\$42,449	2.5	1.0
Men	Total	25,898	100.0	48.5	\$35,443	3.3	1.3
N/A	N/A	3,147	100.0	0.0	\$12,422	2.0	1.1
N/A	Total	3,147	100.0	5.9	\$12,422	2.0	1.1
Total	00-19	3,221	6.0	0.0	\$4,691	2.6	1.4
Total	20-24	6,059	11.3	0.0	\$12,258	3.0	1.6
Total	25-34	11,753	22.0	0.0	\$26,914	3.3	1.4
Total	35-44	9,424	17.7	0.0	\$38,166	3.4	1.3
Total	45-54	10,339	19.4	0.0	\$41,659	3.5	1.2
Total	55-64	7,370	13.8	0.0	\$43,779	3.6	1.2
Total	65-Up	2,069	3.9	0.0	\$28,009	3.3	1.1
Total	N/A	3,154	5.9	0.0	\$12,448	2.0	1.1
Total	Total	53,389	100.0	100.0	\$30,267	3.2	1.3

Note: Persons worked at any time during the year.

County Determination: Based on county of employment in which the person made the most money in the year.

N/A: Represents persons with demographic data that is unavailable.

N/A = Nonresidents, individuals for whom demographic data are not available.

Source: Demographics of Persons Working in Wyoming by County, Industry, Age, & Gender, 2000-2017.

Research & Planning, Wyoming Department of Workforce Services.

Prepared by M. Moore, Research & Planning, WY DWS, 6/12/18.

Average Earnings by Age and Gender with Place of Work in Laramie County in 2012

Gender	Age Group	Number	Age Percent	Gender Percent	Average Annual Wage	Average Quarters Worked	Average Annual Employers
Women	00-19	1,620	6.6	0.0	\$4,437	2.6	1.5
Women	20-24	2,984	12.1	0.0	\$11,142	3.0	1.6
Women	25-34	5,677	23.1	0.0	\$25,010	3.3	1.4
Women	35-44	4,513	18.3	0.0	\$33,809	3.5	1.3
Women	45-54	5,001	20.3	0.0	\$36,291	3.6	1.3
Women	55-64	3,757	15.3	0.0	\$36,025	3.6	1.2
Women	65-Up	1,051	4.3	0.0	\$21,352	3.3	1.1
Women	N/A	4	0.0	0.0	\$23,160	3.5	1.0
Women	Total	24,607	100.0	45.6	\$27,405	3.4	1.3
Men	00-19	1,574	6.0	0.0	\$4,812	2.5	1.4
Men	20-24	3,170	12.1	0.0	\$13,457	3.0	1.6
Men	25-34	6,279	23.9	0.0	\$29,246	3.2	1.4
Men	35-44	5,106	19.4	0.0	\$42,765	3.4	1.3
Men	45-54	5,221	19.8	0.0	\$48,201	3.5	1.2
Men	55-64	3,767	14.3	0.0	\$53,425	3.5	1.2
Men	65-Up	1,184	4.5	0.0	\$37,539	3.3	1.1
Men	N/A	4	0.0	0.0	\$21,926	1.8	1.0
Men	Total	26,305	100.0	48.7	\$36,102	3.3	1.3
N/A	N/A	3,075	100.0	0.0	\$13,392	2.0	1.1
N/A	Total	3,075	100.0	5.7	\$13,392	2.0	1.1
Total	00-19	3,194	5.9	0.0	\$4,622	2.6	1.5
Total	20-24	6,154	11.4	0.0	\$12,335	3.0	1.6
Total	25-34	11,956	22.1	0.0	\$27,235	3.3	1.4
Total	35-44	9,619	17.8	0.0	\$38,563	3.4	1.3
Total	45-54	10,222	18.9	0.0	\$42,374	3.5	1.2
Total	55-64	7,524	13.9	0.0	\$44,737	3.6	1.2
Total	65-Up	2,235	4.1	0.0	\$29,927	3.3	1.1
Total	N/A	3,083	5.7	0.0	\$13,416	2.0	1.1
Total	Total	53,987	100.0	100.0	\$30,845	3.3	1.3

Note: Persons worked at any time during the year.

County Determination: Based on county of employment in which the person made the most money in the year.

N/A: Represents persons with demographic data that is unavailable.

N/A = Nonresidents, individuals for whom demographic data are not available.

Source: Demographics of Persons Working in Wyoming by County, Industry, Age, & Gender, 2000-2017.

Research & Planning, Wyoming Department of Workforce Services.

Prepared by M. Moore, Research & Planning, WY DWS, 6/12/18.

Average Earnings by Age and Gender with Place of Work in Laramie County in 2013

Gender	Age Group	Number	Age Percent	Gender Percent	Average Annual Wage	Average Quarters Worked	Average Annual Employers
Women	00-19	1,627	6.6	0.0	\$4,439	2.7	1.5
Women	20-24	3,038	12.2	0.0	\$11,756	3.1	1.7
Women	25-34	5,740	23.1	0.0	\$25,657	3.4	1.4
Women	35-44	4,529	18.2	0.0	\$34,296	3.5	1.3
Women	45-54	4,908	19.8	0.0	\$37,214	3.6	1.3
Women	55-64	3,854	15.5	0.0	\$36,842	3.6	1.2
Women	65-Up	1,131	4.6	0.0	\$21,841	3.3	1.1
Women	N/A	6	0.0	0.0	\$16,034	2.3	1.2
Women	Total	24,833	100.0	44.8	\$27,986	3.4	1.4
Men	00-19	1,656	6.1	0.0	\$4,992	2.5	1.5
Men	20-24	3,162	11.7	0.0	\$14,589	3.0	1.7
Men	25-34	6,417	23.7	0.0	\$29,659	3.2	1.4
Men	35-44	5,230	19.3	0.0	\$43,639	3.4	1.3
Men	45-54	5,334	19.7	0.0	\$48,252	3.4	1.2
Men	55-64	3,964	14.6	0.0	\$52,305	3.5	1.2
Men	65-Up	1,302	4.8	0.0	\$36,121	3.3	1.1
Men	N/A	2	0.0	0.0	\$18,984	2.5	1.0
Men	Total	27,067	100.0	48.9	\$36,381	3.3	1.4
N/A	N/A	3,494	100.0	0.0	\$14,523	2.0	1.1
N/A	Total	3,494	100.0	6.3	\$14,523	2.0	1.1
Total	00-19	3,283	5.9	0.0	\$4,718	2.6	1.5
Total	20-24	6,200	11.2	0.0	\$13,201	3.0	1.7
Total	25-34	12,157	21.9	0.0	\$27,769	3.3	1.4
Total	35-44	9,759	17.6	0.0	\$39,303	3.5	1.3
Total	45-54	10,242	18.5	0.0	\$42,963	3.5	1.3
Total	55-64	7,818	14.1	0.0	\$44,682	3.5	1.2
Total	65-Up	2,433	4.4	0.0	\$29,483	3.3	1.1
Total	N/A	3,502	6.3	0.0	\$14,528	2.0	1.1
Total	Total	55,394	100.0	100.0	\$31,239	3.2	1.3

Note: Persons worked at any time during the year.

County Determination: Based on county of employment in which the person made the most money in the year.

N/A: Represents persons with demographic data that is unavailable.

N/A = Nonresidents, individuals for whom demographic data are not available.

Source: Demographics of Persons Working in Wyoming by County, Industry, Age, & Gender, 2000-2017.
Research & Planning, Wyoming Department of Workforce Services.

Prepared by M. Moore, Research & Planning, WY DWS, 6/12/18.

Average Earnings by Age and Gender with Place of Work in Laramie County in 2014

Gender	Age Group	Number	Age Percent	Gender Percent	Average Annual Wage	Average Quarters Worked	Average Annual Employers
Women	00-19	1,748	6.9	0.0	\$4,483	2.6	1.6
Women	20-24	3,196	12.6	0.0	\$12,160	3.0	1.7
Women	25-34	5,773	22.8	0.0	\$26,542	3.3	1.4
Women	35-44	4,632	18.3	0.0	\$34,876	3.5	1.4
Women	45-54	4,805	19.0	0.0	\$37,683	3.6	1.3
Women	55-64	3,948	15.6	0.0	\$37,464	3.6	1.2
Women	65-Up	1,208	4.8	0.0	\$21,800	3.3	1.1
Women	N/A	8	0.0	0.0	\$20,739	2.4	1.0
Women	Total	25,318	100.0	45.2	\$28,318	3.4	1.4
Men	00-19	1,689	6.2	0.0	\$5,302	2.6	1.6
Men	20-24	3,206	11.8	0.0	\$16,300	3.0	1.7
Men	25-34	6,524	23.9	0.0	\$31,545	3.2	1.5
Men	35-44	5,234	19.2	0.0	\$46,104	3.4	1.3
Men	45-54	5,263	19.3	0.0	\$50,396	3.5	1.3
Men	55-64	3,965	14.6	0.0	\$54,522	3.5	1.2
Men	65-Up	1,364	5.0	0.0	\$37,029	3.3	1.1
Men	N/A	1	0.0	0.0	\$1,501	1.0	1.0
Men	Total	27,246	100.0	48.6	\$38,179	3.3	1.4
N/A	N/A	3,507	100.0	0.0	\$13,809	2.0	1.1
N/A	Total	3,507	100.0	6.3	\$13,809	2.0	1.1
Total	00-19	3,437	6.1	0.0	\$4,885	2.6	1.6
Total	20-24	6,402	11.4	0.0	\$14,233	3.0	1.7
Total	25-34	12,297	21.9	0.0	\$29,196	3.3	1.4
Total	35-44	9,866	17.6	0.0	\$40,833	3.5	1.4
Total	45-54	10,068	18.0	0.0	\$44,329	3.5	1.3
Total	55-64	7,913	14.1	0.0	\$46,011	3.6	1.2
Total	65-Up	2,572	4.6	0.0	\$29,876	3.3	1.1
Total	N/A	3,516	6.3	0.0	\$13,822	2.0	1.1
Total	Total	56,071	100.0	100.0	\$32,202	3.3	1.4

Note: Persons worked at any time during the year.

County Determination: Based on county of employment in which the person made the most money in the year.

N/A: Represents persons with demographic data that is unavailable.

N/A = Nonresidents, individuals for whom demographic data are not available.

Source: Demographics of Persons Working in Wyoming by County, Industry, Age, & Gender, 2000-2017.
Research & Planning, Wyoming Department of Workforce Services.

Prepared by M. Moore, Research & Planning, WY DWS, 6/12/18.

Average Earnings by Age and Gender with Place of Work in Laramie County in 2015

Gender	Age Group	Number	Age Percent	Gender Percent	Average Annual Wage	Average Quarters Worked	Average Annual Employers
Women	00-19	1,843	7.2	0.0	\$5,013	2.7	1.6
Women	20-24	3,092	12.1	0.0	\$12,691	3.0	1.7
Women	25-34	5,865	23.0	0.0	\$27,326	3.4	1.5
Women	35-44	4,650	18.3	0.0	\$36,038	3.5	1.4
Women	45-54	4,745	18.6	0.0	\$39,355	3.6	1.3
Women	55-64	4,031	15.8	0.0	\$38,444	3.6	1.2
Women	65-Up	1,245	4.9	0.0	\$22,117	3.3	1.1
Women	N/A	7	0.0	0.0	\$22,191	2.1	1.0
Women	Total	25,478	100.0	44.8	\$29,269	3.4	1.4
Men	00-19	1,714	6.2	0.0	\$5,445	2.6	1.5
Men	20-24	3,094	11.3	0.0	\$16,934	3.1	1.7
Men	25-34	6,609	24.1	0.0	\$31,830	3.3	1.5
Men	35-44	5,339	19.4	0.0	\$46,191	3.4	1.3
Men	45-54	5,223	19.0	0.0	\$52,681	3.5	1.3
Men	55-64	4,076	14.8	0.0	\$54,942	3.5	1.2
Men	65-Up	1,423	5.2	0.0	\$36,578	3.3	1.1
Men	Total	27,478	100.0	48.3	\$38,935	3.3	1.4
N/A	N/A	3,923	100.0	0.0	\$13,572	2.0	1.1
N/A	Total	3,923	100.0	6.9	\$13,572	2.0	1.1
Total	00-19	3,557	6.3	0.0	\$5,221	2.7	1.6
Total	20-24	6,186	10.9	0.0	\$14,813	3.0	1.7
Total	25-34	12,474	21.9	0.0	\$29,712	3.3	1.5
Total	35-44	9,989	17.6	0.0	\$41,464	3.4	1.3
Total	45-54	9,968	17.5	0.0	\$46,337	3.5	1.3
Total	55-64	8,107	14.3	0.0	\$46,739	3.6	1.2
Total	65-Up	2,668	4.7	0.0	\$29,830	3.3	1.1
Total	N/A	3,930	6.9	0.0	\$13,587	2.0	1.1
Total	Total	56,879	100.0	100.0	\$32,856	3.3	1.4

Note: Persons worked at any time during the year.

County Determination: Based on county of employment in which the person made the most money in the year.

N/A: Represents persons with demographic data that is unavailable.

N/A = Nonresidents, individuals for whom demographic data are not available.

Source: Demographics of Persons Working in Wyoming by County, Industry, Age, & Gender, 2000-2017.
Research & Planning, Wyoming Department of Workforce Services.

Prepared by M. Moore, Research & Planning, WY DWS, 6/12/18.

Average Earnings by Age and Gender with Place of Work in Laramie County in 2016

Gender	Age Group	Number	Age Percent	Gender Percent	Average Annual Wage	Average Quarters Worked	Average Annual Employers
Women	00-19	1,770	7.0	0.0	\$5,185	2.8	1.6
Women	20-24	2,980	11.8	0.0	\$13,314	3.1	1.7
Women	25-34	5,864	23.3	0.0	\$27,311	3.4	1.5
Women	35-44	4,653	18.5	0.0	\$37,227	3.6	1.4
Women	45-54	4,560	18.1	0.0	\$40,633	3.6	1.3
Women	55-64	4,079	16.2	0.0	\$38,765	3.6	1.2
Women	65-Up	1,244	4.9	0.0	\$23,885	3.4	1.1
Women	N/A	6	0.0	0.0	\$22,422	2.3	1.0
Women	Total	25,156	100.0	45.2	\$30,032	3.4	1.4
Men	00-19	1,625	6.1	0.0	\$5,666	2.6	1.5
Men	20-24	2,871	10.8	0.0	\$16,949	3.0	1.7
Men	25-34	6,392	24.0	0.0	\$32,081	3.3	1.5
Men	35-44	5,180	19.5	0.0	\$46,880	3.4	1.3
Men	45-54	5,029	18.9	0.0	\$53,568	3.5	1.3
Men	55-64	4,098	15.4	0.0	\$54,998	3.5	1.2
Men	65-Up	1,435	5.4	0.0	\$39,105	3.4	1.1
Men	Total	26,630	100.0	47.8	\$39,679	3.3	1.4
N/A	N/A	3,916	100.0	0.0	\$13,389	2.1	1.2
N/A	Total	3,916	100.0	7.0	\$13,389	2.1	1.2
Total	00-19	3,395	6.1	0.0	\$5,415	2.7	1.6
Total	20-24	5,851	10.5	0.0	\$15,098	3.1	1.7
Total	25-34	12,256	22.0	0.0	\$29,799	3.3	1.5
Total	35-44	9,833	17.7	0.0	\$42,312	3.5	1.3
Total	45-54	9,589	17.2	0.0	\$47,417	3.6	1.3
Total	55-64	8,177	14.7	0.0	\$46,900	3.6	1.2
Total	65-Up	2,679	4.8	0.0	\$32,037	3.4	1.1
Total	N/A	3,922	7.0	0.0	\$13,403	2.1	1.2
Total	Total	55,702	100.0	100.0	\$33,474	3.3	1.4

Note: Persons worked at any time during the year.

County Determination: Based on county of employment in which the person made the most money in the year.

N/A: Represents persons with demographic data that is unavailable.

N/A = Nonresidents, individuals for whom demographic data are not available.

Source: Demographics of Persons Working in Wyoming by County, Industry, Age, & Gender, 2000-2017.
Research & Planning, Wyoming Department of Workforce Services.

Prepared by M. Moore, Research & Planning, WY DWS, 6/12/18.

Average Earnings by Age and Gender with Place of Work in Laramie County in 2017

Gender	Age Group	Number	Age Percent	Gender Percent	Average Annual Wage	Average Quarters Worked	Average Annual Employers
Women	00-19	1,688	6.9	0.0	\$5,480	2.8	1.6
Women	20-24	2,775	11.4	0.0	\$13,753	3.2	1.7
Women	25-34	5,626	23.1	0.0	\$28,670	3.4	1.5
Women	35-44	4,592	18.8	0.0	\$38,960	3.6	1.4
Women	45-54	4,325	17.7	0.0	\$41,424	3.6	1.3
Women	55-64	4,081	16.7	0.0	\$39,323	3.6	1.2
Women	65-Up	1,311	5.4	0.0	\$25,500	3.4	1.1
Women	N/A	4	0.0	0.0	\$32,878	2.8	1.3
Women	Total	24,402	100.0	44.6	\$31,178	3.4	1.4
Men	00-19	1,535	5.9	0.0	\$5,904	2.7	1.5
Men	20-24	2,738	10.6	0.0	\$17,097	3.1	1.7
Men	25-34	6,065	23.5	0.0	\$33,953	3.3	1.5
Men	35-44	5,159	20.0	0.0	\$49,052	3.5	1.3
Men	45-54	4,766	18.5	0.0	\$55,817	3.5	1.3
Men	55-64	4,059	15.7	0.0	\$54,726	3.5	1.2
Men	65-Up	1,485	5.8	0.0	\$40,707	3.3	1.1
Men	N/A	3	0.0	0.0	\$1,725	1.3	1.0
Men	Total	25,810	100.0	47.1	\$41,204	3.4	1.4
N/A	N/A	4,549	100.0	0.0	\$14,215	2.1	1.2
N/A	Total	4,549	100.0	8.3	\$14,215	2.1	1.2
Total	00-19	3,223	5.9	0.0	\$5,682	2.7	1.6
Total	20-24	5,513	10.1	0.0	\$15,414	3.1	1.7
Total	25-34	11,691	21.3	0.0	\$31,410	3.4	1.5
Total	35-44	9,751	17.8	0.0	\$44,299	3.5	1.3
Total	45-54	9,091	16.6	0.0	\$48,970	3.6	1.3
Total	55-64	8,140	14.9	0.0	\$47,004	3.6	1.2
Total	65-Up	2,796	5.1	0.0	\$33,577	3.3	1.1
Total	N/A	4,556	8.3	0.0	\$14,223	2.1	1.2
Total	Total	54,761	100.0	100.0	\$34,494	3.3	1.4

Note: Persons worked at any time during the year.

County Determination: Based on county of employment in which the person made the most money in the year.

N/A: Represents persons with demographic data that is unavailable.

N/A = Nonresidents, individuals for whom demographic data are not available.

Source: Demographics of Persons Working in Wyoming by County, Industry, Age, & Gender, 2000-2017.

Research & Planning, Wyoming Department of Workforce Services.

Prepared by M. Moore, Research & Planning, WY DWS, 6/12/18.