

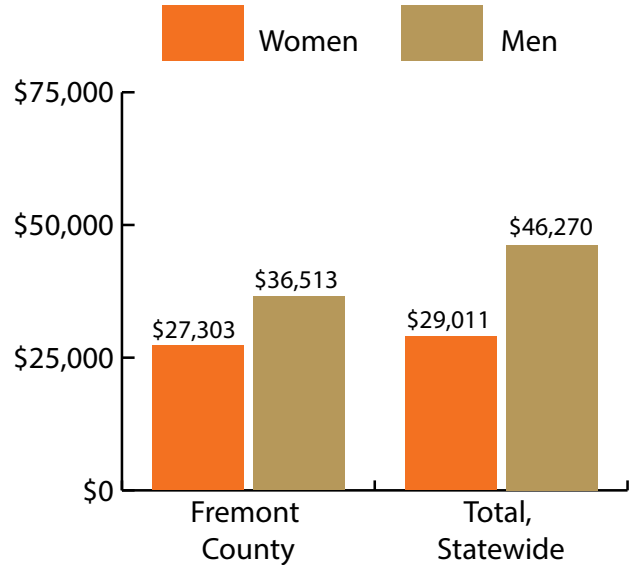
Fremont County at a Glance, 2017

Demographics of Persons Working in Wyoming by County, Industry, Age, & Gender, 2000-2017

Table: Total Number of Persons Working in Fremont County, WY, at Any Time by Gender and Age, 2016-2017

Gender	2016	2017	Change	
			N	%
Women	9,311	9,059	-252	-2.7
Men	9,007	8,666	-341	-3.8
Nonresidents	1,612	1,814	202	12.5
Total	19,930	19,539	-391	-2.0

Age	2016	2017	Change	
			N	%
00-19	1,102	1,035	-67	-6.1
20-24	1,772	1,652	-120	-6.8
25-34	4,020	3,883	-137	-3.4
35-44	3,451	3,375	-76	-2.2
45-54	3,246	3,078	-168	-5.2
55-64	3,399	3,362	-37	-1.1
65-Up	1,323	1,336	13	1.0
Nonresidents	1,617	1,818	201	12.4
Total	19,930	19,539	-391	-2.0



Women's Wages as % of Men's Wages

Fremont County: 74.8%

Total: 62.7%

Figure: Average Annual Wages by Gender, 2017

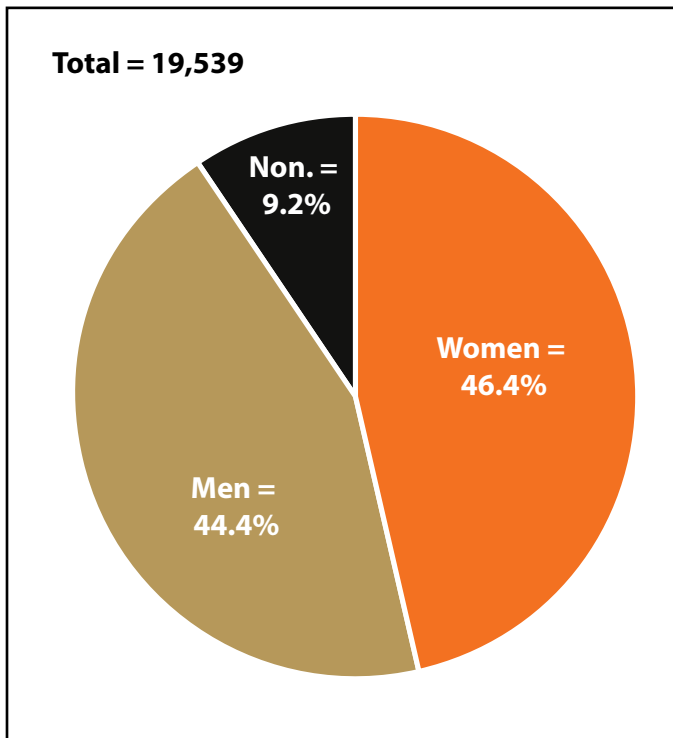


Figure: Persons Working by Gender, 2017

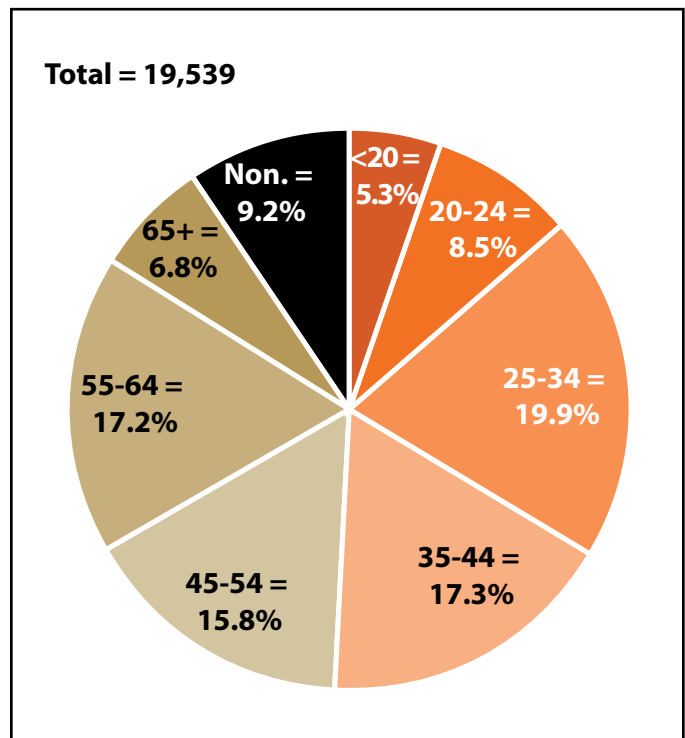


Figure: Persons Working by Age, 2017

Note: Nonresidents are individuals for whom demographic data are not available.

Source: Demographics of Persons Working in Wyoming by County, Industry, Age, & Gender, 2000-2017. Research & Planning, Wyoming Department of Workforce Services. Prepared by M. Moore, Research & Planning, WY DWS, 6/12/18.

Persons Working in Fremont County by Gender and Age, 2000-2017

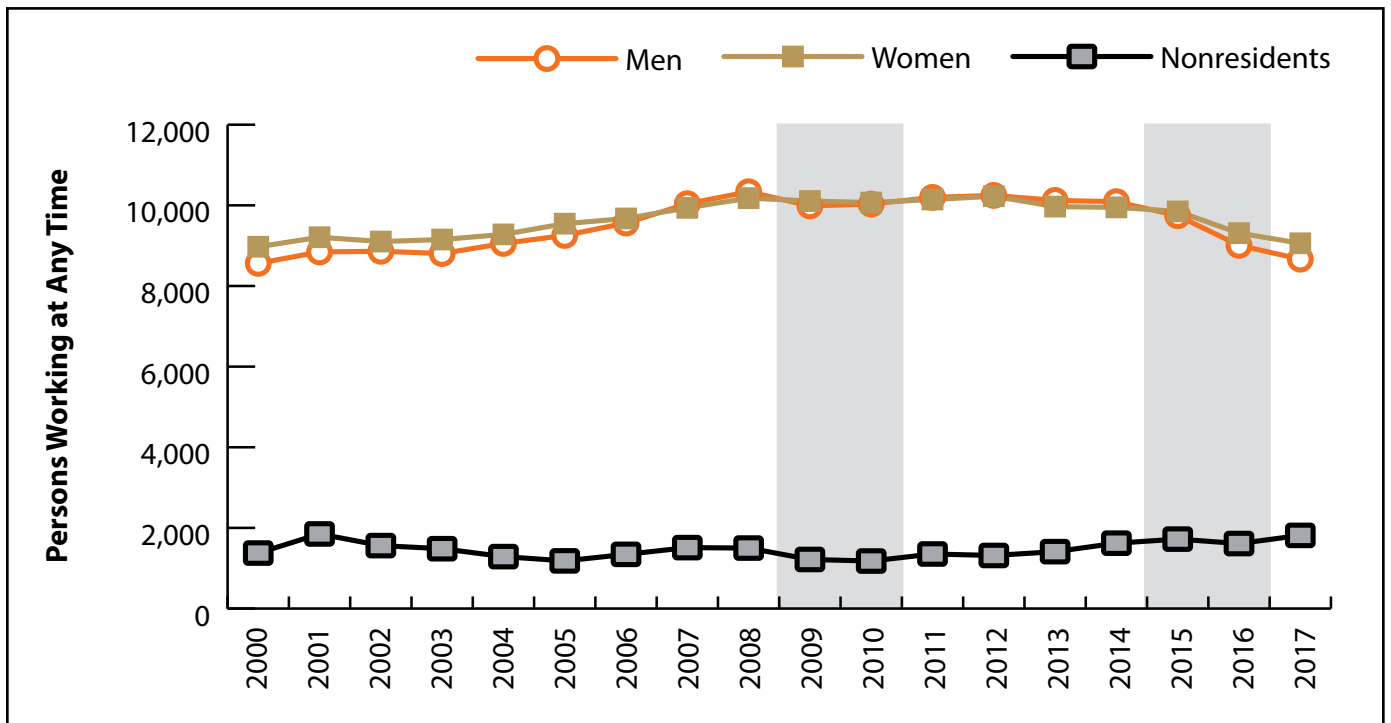


Figure: Persons Working in Fremont County at Any Time by Gender, 2000-2017

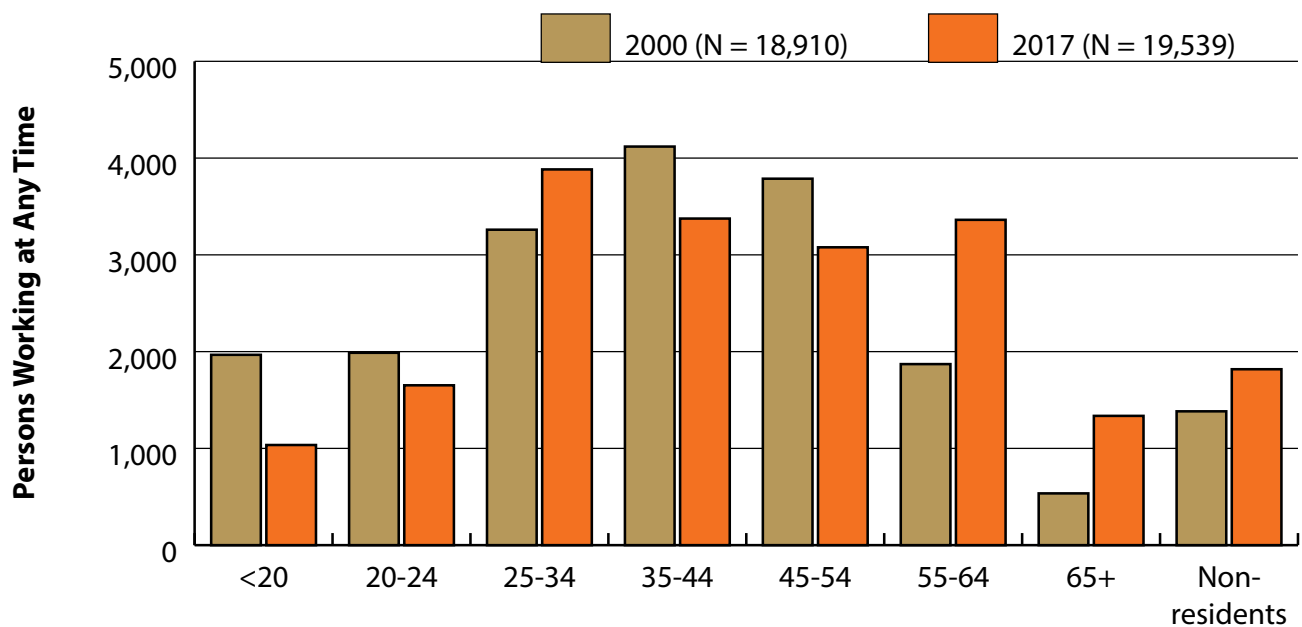


Figure: Persons Working in Fremont County at Any Time by Age, 2000-2017

Note: Nonresidents are individuals for whom demographic data are not available.
 Shaded areas indicate periods of economic downturn: 2009Q1-2010Q1 and 2015Q2-2016Q4.
 Source: Demographics of Persons Working in Wyoming by County, Industry, Age, & Gender, 2000-2017. Research & Planning, Wyoming Department of Workforce Services. Prepared by M. Moore, Research & Planning, WY DWS, 6/12/18.

Wages for Persons Working in Fremont County by Gender, 2000-2017

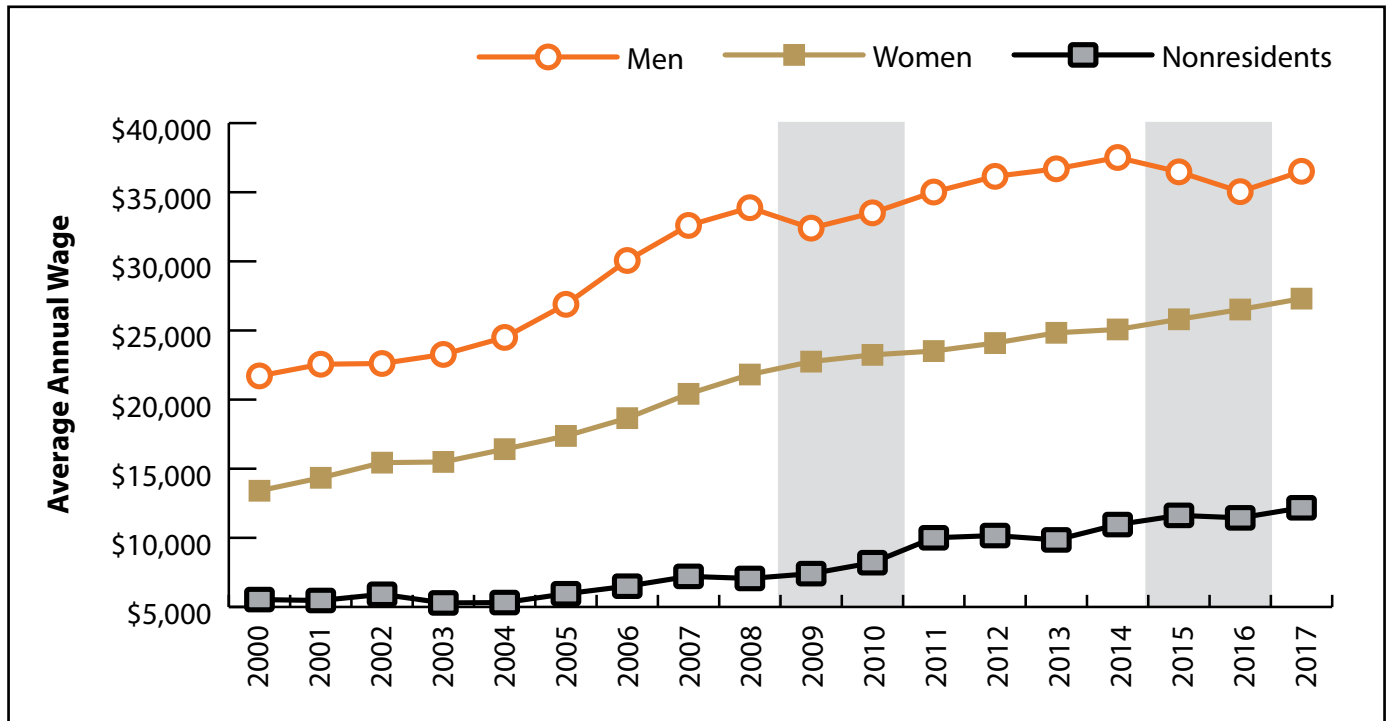


Figure: Average Annual Wage for Persons Working in Fremont County at Any Time by Age, 2000-2017

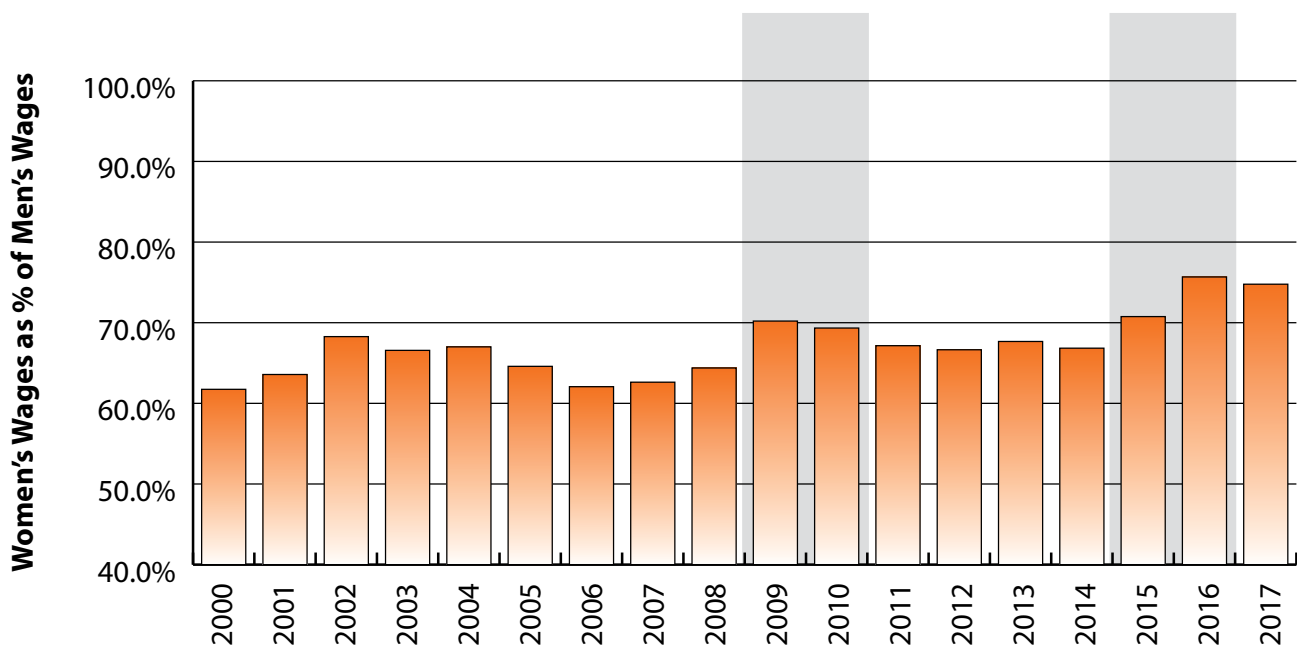


Figure: Women's Average Annual Wages as a Percent of Men's Wages for Persons Working in Fremont County at Any Time by Age, 2000-2017

Note: Nonresidents are individuals for whom demographic data are not available.
 Shaded areas indicate periods of economic downturn: 2009Q1-2010Q1 and 2015Q2-2016Q4.
 Source: Demographics of Persons Working in Wyoming by County, Industry, Age, & Gender, 2000-2017. Research & Planning, Wyoming Department of Workforce Services. Prepared by M. Moore, Research & Planning, WY DWS, 6/12/18.

Average Earnings by Age and Gender with Place of Work in Fremont County in 2000

Gender	Age Group	Number	Age Percent	Gender Percent	Average Annual Wage	Average Quarters Worked	Average Annual Employers
Women	00-19	1,026	11.4	0.0	\$2,973	2.6	1.6
Women	20-24	968	10.8	0.0	\$6,622	2.9	1.8
Women	25-34	1,671	18.6	0.0	\$11,675	3.2	1.5
Women	35-44	2,156	24.0	0.0	\$16,440	3.5	1.5
Women	45-54	1,974	22.0	0.0	\$19,415	3.5	1.3
Women	55-64	934	10.4	0.0	\$16,504	3.5	1.2
Women	65-Up	242	2.7	0.0	\$8,655	3.1	1.1
Women	N/A	2	0.0	0.0	\$18,150	2.5	1.0
Women	Total	8,973	100.0	47.5	\$13,405	3.3	1.5
Men	00-19	941	11.0	0.0	\$3,390	2.5	1.6
Men	20-24	1,020	11.9	0.0	\$9,567	2.9	1.8
Men	25-34	1,589	18.6	0.0	\$18,111	3.2	1.6
Men	35-44	1,963	22.9	0.0	\$26,659	3.5	1.4
Men	45-54	1,813	21.2	0.0	\$32,766	3.6	1.3
Men	55-64	937	10.9	0.0	\$27,903	3.5	1.2
Men	65-Up	293	3.4	0.0	\$21,202	3.1	1.1
Men	N/A	5	0.1	0.0	\$11,209	1.8	1.0
Men	Total	8,561	100.0	45.3	\$21,712	3.3	1.4
N/A	N/A	1,376	100.0	0.0	\$5,533	1.6	1.1
N/A	Total	1,376	100.0	7.3	\$5,533	1.6	1.1
Total	00-19	1,967	10.4	0.0	\$3,173	2.6	1.6
Total	20-24	1,988	10.5	0.0	\$8,133	2.9	1.8
Total	25-34	3,260	17.2	0.0	\$14,812	3.2	1.6
Total	35-44	4,119	21.8	0.0	\$21,310	3.5	1.4
Total	45-54	3,787	20.0	0.0	\$25,807	3.6	1.3
Total	55-64	1,871	9.9	0.0	\$22,213	3.5	1.2
Total	65-Up	535	2.8	0.0	\$15,526	3.1	1.1
Total	N/A	1,383	7.3	0.0	\$5,572	1.6	1.1
Total	Total	18,910	100.0	100.0	\$16,593	3.1	1.4

Note: Persons worked at any time during the year.

County Determination: Based on county of employment in which the person made the most money in the year.

N/A: Represents persons with demographic data that is unavailable.

N/A = Nonresidents, individuals for whom demographic data are not available.

Source: Demographics of Persons Working in Wyoming by County, Industry, Age, & Gender, 2000-2017.

Research & Planning, Wyoming Department of Workforce Services.

Prepared by M. Moore, Research & Planning, WY DWS, 6/12/18.

Average Earnings by Age and Gender with Place of Work in Fremont County in 2001

Gender	Age Group	Number	Age Percent	Gender Percent	Average Annual Wage	Average Quarters Worked	Average Annual Employers
Women	00-19	1,031	11.2	0.0	\$3,216	2.6	1.7
Women	20-24	1,042	11.3	0.0	\$6,899	2.9	1.8
Women	25-34	1,668	18.1	0.0	\$12,417	3.1	1.6
Women	35-44	2,123	23.1	0.0	\$17,572	3.5	1.5
Women	45-54	2,051	22.3	0.0	\$20,917	3.5	1.4
Women	55-64	1,012	11.0	0.0	\$17,970	3.4	1.3
Women	65-Up	279	3.0	0.0	\$8,697	3.0	1.1
Women	N/A	3	0.0	0.0	\$13,612	2.0	1.0
Women	Total	9,209	100.0	46.3	\$14,342	3.2	1.5
Men	00-19	991	11.2	0.0	\$3,505	2.5	1.6
Men	20-24	1,055	11.9	0.0	\$10,573	2.9	1.8
Men	25-34	1,602	18.1	0.0	\$19,273	3.2	1.6
Men	35-44	1,918	21.7	0.0	\$27,381	3.4	1.4
Men	45-54	1,955	22.1	0.0	\$34,044	3.5	1.3
Men	55-64	986	11.1	0.0	\$29,513	3.4	1.3
Men	65-Up	335	3.8	0.0	\$17,385	3.0	1.2
Men	N/A	3	0.0	0.0	\$9,392	2.3	1.3
Men	Total	8,845	100.0	44.4	\$22,558	3.2	1.5
N/A	N/A	1,850	100.0	0.0	\$5,467	1.4	1.0
N/A	Total	1,850	100.0	9.3	\$5,467	1.4	1.0
Total	00-19	2,022	10.2	0.0	\$3,358	2.6	1.7
Total	20-24	2,097	10.5	0.0	\$8,747	2.9	1.8
Total	25-34	3,270	16.4	0.0	\$15,776	3.2	1.6
Total	35-44	4,041	20.3	0.0	\$22,228	3.4	1.5
Total	45-54	4,006	20.1	0.0	\$27,323	3.5	1.3
Total	55-64	1,998	10.0	0.0	\$23,666	3.4	1.3
Total	65-Up	614	3.1	0.0	\$13,437	3.0	1.2
Total	N/A	1,856	9.3	0.0	\$5,487	1.4	1.0
Total	Total	19,904	100.0	100.0	\$17,168	3.0	1.4

Note: Persons worked at any time during the year.

County Determination: Based on county of employment in which the person made the most money in the year.

N/A: Represents persons with demographic data that is unavailable.

N/A = Nonresidents, individuals for whom demographic data are not available.

Source: Demographics of Persons Working in Wyoming by County, Industry, Age, & Gender, 2000-2017.

Research & Planning, Wyoming Department of Workforce Services.

Prepared by M. Moore, Research & Planning, WY DWS, 6/12/18.

Average Earnings by Age and Gender with Place of Work in Fremont County in 2002

Gender	Age Group	Number	Age Percent	Gender Percent	Average Annual Wage	Average Quarters Worked	Average Annual Employers
Women	00-19	979	10.8	0.0	\$3,167	2.6	1.7
Women	20-24	1,018	11.2	0.0	\$7,453	2.9	1.7
Women	25-34	1,599	17.6	0.0	\$13,632	3.2	1.5
Women	35-44	2,073	22.8	0.0	\$18,738	3.5	1.5
Women	45-54	2,064	22.7	0.0	\$21,902	3.6	1.3
Women	55-64	1,069	11.7	0.0	\$19,719	3.5	1.3
Women	65-Up	297	3.3	0.0	\$9,653	3.1	1.2
Women	N/A	3	0.0	0.0	\$11,255	2.3	1.0
Women	Total	9,102	100.0	46.6	\$15,438	3.3	1.5
Men	00-19	969	10.9	0.0	\$3,389	2.5	1.6
Men	20-24	1,040	11.7	0.0	\$10,119	2.8	1.6
Men	25-34	1,702	19.2	0.0	\$18,865	3.1	1.5
Men	35-44	1,850	20.9	0.0	\$27,880	3.4	1.4
Men	45-54	1,938	21.9	0.0	\$34,364	3.5	1.3
Men	55-64	1,019	11.5	0.0	\$29,913	3.5	1.2
Men	65-Up	342	3.9	0.0	\$16,897	3.1	1.1
Men	N/A	1	0.0	0.0	\$7,349	4.0	1.0
Men	Total	8,861	100.0	45.4	\$22,611	3.2	1.4
N/A	N/A	1,561	100.0	0.0	\$5,917	1.4	1.0
N/A	Total	1,561	100.0	8.0	\$5,917	1.4	1.0
Total	00-19	1,948	10.0	0.0	\$3,277	2.5	1.6
Total	20-24	2,058	10.5	0.0	\$8,800	2.9	1.7
Total	25-34	3,301	16.9	0.0	\$16,330	3.1	1.5
Total	35-44	3,923	20.1	0.0	\$23,049	3.4	1.4
Total	45-54	4,002	20.5	0.0	\$27,937	3.5	1.3
Total	55-64	2,088	10.7	0.0	\$24,694	3.5	1.2
Total	65-Up	639	3.3	0.0	\$13,530	3.1	1.1
Total	N/A	1,565	8.0	0.0	\$5,928	1.4	1.0
Total	Total	19,524	100.0	100.0	\$17,932	3.1	1.4

Note: Persons worked at any time during the year.

County Determination: Based on county of employment in which the person made the most money in the year.

N/A: Represents persons with demographic data that is unavailable.

N/A = Nonresidents, individuals for whom demographic data are not available.

Source: Demographics of Persons Working in Wyoming by County, Industry, Age, & Gender, 2000-2017.
Research & Planning, Wyoming Department of Workforce Services.

Prepared by M. Moore, Research & Planning, WY DWS, 6/12/18.

Average Earnings by Age and Gender with Place of Work in Fremont County in 2003

Gender	Age Group	Number	Age Percent	Gender Percent	Average Annual Wage	Average Quarters Worked	Average Annual Employers
Women	00-19	950	10.4	0.0	\$3,100	2.6	1.6
Women	20-24	1,027	11.2	0.0	\$7,608	2.9	1.7
Women	25-34	1,602	17.5	0.0	\$13,751	3.1	1.5
Women	35-44	2,015	22.0	0.0	\$18,651	3.4	1.4
Women	45-54	2,106	23.0	0.0	\$21,724	3.5	1.3
Women	55-64	1,118	12.2	0.0	\$19,719	3.4	1.2
Women	65-Up	333	3.6	0.0	\$10,680	3.2	1.1
Women	N/A	1	0.0	0.0	\$36,332	4.0	1.0
Women	Total	9,152	100.0	47.1	\$15,489	3.2	1.4
Men	00-19	927	10.5	0.0	\$3,278	2.3	1.5
Men	20-24	1,088	12.4	0.0	\$10,900	2.9	1.8
Men	25-34	1,696	19.3	0.0	\$19,470	3.1	1.5
Men	35-44	1,727	19.6	0.0	\$28,393	3.4	1.3
Men	45-54	1,900	21.6	0.0	\$35,588	3.5	1.3
Men	55-64	1,100	12.5	0.0	\$30,492	3.4	1.2
Men	65-Up	363	4.1	0.0	\$18,565	3.2	1.2
Men	N/A	4	0.0	0.0	\$2,393	1.8	1.0
Men	Total	8,805	100.0	45.3	\$23,267	3.2	1.4
N/A	N/A	1,484	100.0	0.0	\$5,291	1.4	1.0
N/A	Total	1,484	100.0	7.6	\$5,291	1.4	1.0
Total	00-19	1,877	9.7	0.0	\$3,188	2.5	1.6
Total	20-24	2,115	10.9	0.0	\$9,301	2.9	1.7
Total	25-34	3,298	17.0	0.0	\$16,692	3.1	1.5
Total	35-44	3,742	19.2	0.0	\$23,147	3.4	1.4
Total	45-54	4,006	20.6	0.0	\$28,300	3.5	1.3
Total	55-64	2,218	11.4	0.0	\$25,062	3.4	1.2
Total	65-Up	696	3.6	0.0	\$14,792	3.2	1.1
Total	N/A	1,489	7.7	0.0	\$5,304	1.4	1.0
Total	Total	19,441	100.0	100.0	\$18,233	3.1	1.4

Note: Persons worked at any time during the year.

County Determination: Based on county of employment in which the person made the most money in the year.

N/A: Represents persons with demographic data that is unavailable.

N/A = Nonresidents, individuals for whom demographic data are not available.

Source: Demographics of Persons Working in Wyoming by County, Industry, Age, & Gender, 2000-2017.

Research & Planning, Wyoming Department of Workforce Services.

Prepared by M. Moore, Research & Planning, WY DWS, 6/12/18.

Average Earnings by Age and Gender with Place of Work in Fremont County in 2004

Gender	Age Group	Number	Age Percent	Gender Percent	Average Annual Wage	Average Quarters Worked	Average Annual Employers
Women	00-19	941	10.1	0.0	\$3,034	2.6	1.6
Women	20-24	1,089	11.7	0.0	\$7,759	2.9	1.7
Women	25-34	1,636	17.6	0.0	\$13,849	3.2	1.5
Women	35-44	1,920	20.7	0.0	\$19,793	3.5	1.4
Women	45-54	2,150	23.2	0.0	\$23,498	3.6	1.3
Women	55-64	1,197	12.9	0.0	\$21,653	3.5	1.2
Women	65-Up	342	3.7	0.0	\$11,275	3.2	1.1
Women	N/A	4	0.0	0.0	\$11,963	1.8	1.0
Women	Total	9,279	100.0	47.3	\$16,414	3.3	1.4
Men	00-19	968	10.7	0.0	\$3,537	2.4	1.6
Men	20-24	1,101	12.2	0.0	\$11,532	2.9	1.8
Men	25-34	1,789	19.8	0.0	\$20,410	3.2	1.6
Men	35-44	1,712	18.9	0.0	\$29,642	3.4	1.4
Men	45-54	1,942	21.4	0.0	\$37,265	3.5	1.3
Men	55-64	1,132	12.5	0.0	\$33,783	3.5	1.2
Men	65-Up	408	4.5	0.0	\$19,145	3.1	1.2
Men	N/A	3	0.0	0.0	\$4,848	2.0	1.3
Men	Total	9,055	100.0	46.1	\$24,497	3.2	1.4
N/A	N/A	1,288	100.0	0.0	\$5,318	1.6	1.1
N/A	Total	1,288	100.0	6.6	\$5,318	1.6	1.1
Total	00-19	1,909	9.7	0.0	\$3,289	2.5	1.6
Total	20-24	2,190	11.2	0.0	\$9,656	2.9	1.8
Total	25-34	3,425	17.5	0.0	\$17,276	3.2	1.5
Total	35-44	3,632	18.5	0.0	\$24,436	3.4	1.4
Total	45-54	4,092	20.9	0.0	\$30,032	3.5	1.3
Total	55-64	2,329	11.9	0.0	\$27,549	3.5	1.2
Total	65-Up	750	3.8	0.0	\$15,556	3.1	1.1
Total	N/A	1,295	6.6	0.0	\$5,337	1.6	1.1
Total	Total	19,622	100.0	100.0	\$19,416	3.1	1.4

Note: Persons worked at any time during the year.

County Determination: Based on county of employment in which the person made the most money in the year.

N/A: Represents persons with demographic data that is unavailable.

N/A = Nonresidents, individuals for whom demographic data are not available.

Source: Demographics of Persons Working in Wyoming by County, Industry, Age, & Gender, 2000-2017.
Research & Planning, Wyoming Department of Workforce Services.

Prepared by M. Moore, Research & Planning, WY DWS, 6/12/18.

Average Earnings by Age and Gender with Place of Work in Fremont County in 2005

Gender	Age Group	Number	Age Percent	Gender Percent	Average Annual Wage	Average Quarters Worked	Average Annual Employers
Women	00-19	968	10.1	0.0	\$3,265	2.6	1.7
Women	20-24	1,085	11.4	0.0	\$8,151	2.9	1.8
Women	25-34	1,721	18.0	0.0	\$14,585	3.2	1.5
Women	35-44	1,892	19.8	0.0	\$20,941	3.5	1.5
Women	45-54	2,234	23.4	0.0	\$24,641	3.6	1.3
Women	55-64	1,257	13.2	0.0	\$23,461	3.6	1.2
Women	65-Up	385	4.0	0.0	\$11,569	3.2	1.1
Women	N/A	3	0.0	0.0	\$25,069	3.0	1.0
Women	Total	9,545	100.0	47.8	\$17,369	3.3	1.5
Men	00-19	914	9.9	0.0	\$3,988	2.5	1.6
Men	20-24	1,099	11.9	0.0	\$13,056	3.0	1.8
Men	25-34	1,942	21.0	0.0	\$22,996	3.2	1.6
Men	35-44	1,710	18.5	0.0	\$32,826	3.4	1.4
Men	45-54	1,982	21.4	0.0	\$39,243	3.6	1.3
Men	55-64	1,178	12.7	0.0	\$36,699	3.5	1.2
Men	65-Up	423	4.6	0.0	\$21,221	3.2	1.2
Men	N/A	5	0.1	0.0	\$9,882	2.2	1.4
Men	Total	9,253	100.0	46.3	\$26,891	3.3	1.5
N/A	N/A	1,182	100.0	0.0	\$5,955	1.8	1.1
N/A	Total	1,182	100.0	5.9	\$5,955	1.8	1.1
Total	00-19	1,882	9.4	0.0	\$3,616	2.5	1.6
Total	20-24	2,184	10.9	0.0	\$10,619	2.9	1.8
Total	25-34	3,663	18.3	0.0	\$19,044	3.2	1.6
Total	35-44	3,602	18.0	0.0	\$26,583	3.5	1.4
Total	45-54	4,216	21.1	0.0	\$31,506	3.6	1.3
Total	55-64	2,435	12.2	0.0	\$29,865	3.5	1.2
Total	65-Up	808	4.0	0.0	\$16,622	3.2	1.2
Total	N/A	1,190	6.0	0.0	\$6,020	1.8	1.1
Total	Total	19,980	100.0	100.0	\$21,104	3.2	1.4

Note: Persons worked at any time during the year.

County Determination: Based on county of employment in which the person made the most money in the year.

N/A: Represents persons with demographic data that is unavailable.

N/A = Nonresidents, individuals for whom demographic data are not available.

Source: Demographics of Persons Working in Wyoming by County, Industry, Age, & Gender, 2000-2017.

Research & Planning, Wyoming Department of Workforce Services.

Prepared by M. Moore, Research & Planning, WY DWS, 6/12/18.

Average Earnings by Age and Gender with Place of Work in Fremont County in 2006

Gender	Age Group	Number	Age Percent	Gender Percent	Average Annual Wage	Average Quarters Worked	Average Annual Employers
Women	00-19	980	10.1	0.0	\$3,580	2.6	1.7
Women	20-24	1,112	11.5	0.0	\$9,140	2.9	1.8
Women	25-34	1,779	18.4	0.0	\$15,778	3.2	1.5
Women	35-44	1,780	18.4	0.0	\$22,241	3.5	1.5
Women	45-54	2,255	23.3	0.0	\$26,251	3.6	1.3
Women	55-64	1,374	14.2	0.0	\$25,413	3.6	1.2
Women	65-Up	392	4.1	0.0	\$12,783	3.3	1.1
Women	N/A	2	0.0	0.0	\$20,972	2.5	1.0
Women	Total	9,674	100.0	47.0	\$18,658	3.3	1.5
Men	00-19	974	10.2	0.0	\$4,700	2.5	1.6
Men	20-24	1,092	11.4	0.0	\$16,272	3.1	1.8
Men	25-34	1,948	20.4	0.0	\$26,121	3.3	1.6
Men	35-44	1,751	18.3	0.0	\$35,875	3.4	1.4
Men	45-54	2,043	21.4	0.0	\$42,561	3.5	1.3
Men	55-64	1,300	13.6	0.0	\$40,902	3.5	1.2
Men	65-Up	449	4.7	0.0	\$24,753	3.2	1.2
Men	N/A	4	0.0	0.0	\$34,896	3.0	1.5
Men	Total	9,561	100.0	46.5	\$30,062	3.3	1.5
N/A	N/A	1,344	100.0	0.0	\$6,501	1.8	1.1
N/A	Total	1,344	100.0	6.5	\$6,501	1.8	1.1
Total	00-19	1,954	9.5	0.0	\$4,138	2.5	1.7
Total	20-24	2,204	10.7	0.0	\$12,674	3.0	1.8
Total	25-34	3,727	18.1	0.0	\$21,184	3.2	1.6
Total	35-44	3,531	17.2	0.0	\$29,002	3.5	1.5
Total	45-54	4,298	20.9	0.0	\$34,003	3.6	1.3
Total	55-64	2,674	13.0	0.0	\$32,943	3.6	1.2
Total	65-Up	841	4.1	0.0	\$19,174	3.2	1.2
Total	N/A	1,350	6.6	0.0	\$6,606	1.8	1.1
Total	Total	20,579	100.0	100.0	\$23,162	3.2	1.4

Note: Persons worked at any time during the year.

County Determination: Based on county of employment in which the person made the most money in the year.

N/A: Represents persons with demographic data that is unavailable.

N/A = Nonresidents, individuals for whom demographic data are not available.

Source: Demographics of Persons Working in Wyoming by County, Industry, Age, & Gender, 2000-2017.

Research & Planning, Wyoming Department of Workforce Services.

Prepared by M. Moore, Research & Planning, WY DWS, 6/12/18.

Average Earnings by Age and Gender with Place of Work in Fremont County in 2007

Gender	Age Group	Number	Age Percent	Gender Percent	Average Annual Wage	Average Quarters Worked	Average Annual Employers
Women	00-19	991	10.0	0.0	\$3,499	2.5	1.6
Women	20-24	1,085	10.9	0.0	\$9,926	2.9	1.7
Women	25-34	1,860	18.7	0.0	\$17,225	3.2	1.6
Women	35-44	1,807	18.2	0.0	\$23,905	3.5	1.5
Women	45-54	2,286	23.0	0.0	\$28,787	3.6	1.3
Women	55-64	1,478	14.9	0.0	\$28,100	3.6	1.2
Women	65-Up	425	4.3	0.0	\$14,179	3.3	1.2
Women	N/A	6	0.1	0.0	\$8,022	1.8	1.0
Women	Total	9,938	100.0	46.2	\$20,415	3.3	1.4
Men	00-19	975	9.7	0.0	\$4,678	2.6	1.6
Men	20-24	1,201	12.0	0.0	\$17,349	3.0	1.8
Men	25-34	2,051	20.4	0.0	\$28,267	3.3	1.6
Men	35-44	1,814	18.1	0.0	\$37,677	3.4	1.4
Men	45-54	2,089	20.8	0.0	\$48,518	3.6	1.3
Men	55-64	1,427	14.2	0.0	\$43,034	3.5	1.2
Men	65-Up	479	4.8	0.0	\$26,457	3.2	1.2
Men	N/A	4	0.0	0.0	\$34,937	3.8	1.3
Men	Total	10,040	100.0	46.7	\$32,599	3.3	1.4
N/A	N/A	1,511	100.0	0.0	\$7,212	1.8	1.1
N/A	Total	1,511	100.0	7.0	\$7,212	1.8	1.1
Total	00-19	1,966	9.1	0.0	\$4,084	2.5	1.6
Total	20-24	2,286	10.6	0.0	\$13,826	3.0	1.7
Total	25-34	3,911	18.2	0.0	\$23,016	3.3	1.6
Total	35-44	3,621	16.9	0.0	\$30,805	3.4	1.4
Total	45-54	4,375	20.4	0.0	\$38,208	3.6	1.3
Total	55-64	2,905	13.5	0.0	\$35,436	3.6	1.2
Total	65-Up	904	4.2	0.0	\$20,685	3.3	1.2
Total	N/A	1,521	7.1	0.0	\$7,288	1.8	1.1
Total	Total	21,489	100.0	100.0	\$25,179	3.2	1.4

Note: Persons worked at any time during the year.

County Determination: Based on county of employment in which the person made the most money in the year.

N/A: Represents persons with demographic data that is unavailable.

N/A = Nonresidents, individuals for whom demographic data are not available.

Source: Demographics of Persons Working in Wyoming by County, Industry, Age, & Gender, 2000-2017.

Research & Planning, Wyoming Department of Workforce Services.

Prepared by M. Moore, Research & Planning, WY DWS, 6/12/18.

Average Earnings by Age and Gender with Place of Work in Fremont County in 2008

Gender	Age Group	Number	Age Percent	Gender Percent	Average Annual Wage	Average Quarters Worked	Average Annual Employers
Women	00-19	937	9.2	0.0	\$3,857	2.6	1.6
Women	20-24	1,144	11.2	0.0	\$11,001	3.0	1.7
Women	25-34	1,921	18.9	0.0	\$18,716	3.2	1.5
Women	35-44	1,822	17.9	0.0	\$25,149	3.5	1.5
Women	45-54	2,307	22.7	0.0	\$30,223	3.6	1.3
Women	55-64	1,586	15.6	0.0	\$29,757	3.6	1.2
Women	65-Up	456	4.5	0.0	\$15,606	3.4	1.2
Women	N/A	7	0.1	0.0	\$7,516	2.0	1.0
Women	Total	10,180	100.0	46.2	\$21,814	3.3	1.4
Men	00-19	960	9.3	0.0	\$5,271	2.6	1.6
Men	20-24	1,234	11.9	0.0	\$18,488	3.0	1.7
Men	25-34	2,159	20.9	0.0	\$30,143	3.3	1.5
Men	35-44	1,829	17.7	0.0	\$38,717	3.4	1.4
Men	45-54	2,146	20.8	0.0	\$48,321	3.6	1.3
Men	55-64	1,478	14.3	0.0	\$46,227	3.6	1.2
Men	65-Up	527	5.1	0.0	\$27,159	3.3	1.2
Men	N/A	4	0.0	0.0	\$30,400	3.0	1.3
Men	Total	10,337	100.0	47.0	\$33,880	3.3	1.4
N/A	N/A	1,500	100.0	0.0	\$7,061	1.8	1.2
N/A	Total	1,500	100.0	6.8	\$7,061	1.8	1.2
Total	00-19	1,897	8.6	0.0	\$4,573	2.6	1.6
Total	20-24	2,378	10.8	0.0	\$14,886	3.0	1.7
Total	25-34	4,080	18.5	0.0	\$24,763	3.3	1.5
Total	35-44	3,651	16.6	0.0	\$31,946	3.4	1.4
Total	45-54	4,453	20.2	0.0	\$38,945	3.6	1.3
Total	55-64	3,064	13.9	0.0	\$37,702	3.6	1.2
Total	65-Up	983	4.5	0.0	\$21,800	3.3	1.2
Total	N/A	1,511	6.9	0.0	\$7,125	1.8	1.2
Total	Total	22,017	100.0	100.0	\$26,474	3.2	1.4

Note: Persons worked at any time during the year.

County Determination: Based on county of employment in which the person made the most money in the year.

N/A: Represents persons with demographic data that is unavailable.

N/A = Nonresidents, individuals for whom demographic data are not available.

Source: Demographics of Persons Working in Wyoming by County, Industry, Age, & Gender, 2000-2017.
Research & Planning, Wyoming Department of Workforce Services.

Prepared by M. Moore, Research & Planning, WY DWS, 6/12/18.

Average Earnings by Age and Gender with Place of Work in Fremont County in 2009

Gender	Age Group	Number	Age Percent	Gender Percent	Average Annual Wage	Average Quarters Worked	Average Annual Employers
Women	00-19	805	8.0	0.0	\$3,995	2.7	1.4
Women	20-24	1,113	11.0	0.0	\$11,293	3.0	1.6
Women	25-34	2,011	19.9	0.0	\$18,999	3.2	1.4
Women	35-44	1,795	17.8	0.0	\$26,534	3.5	1.4
Women	45-54	2,253	22.3	0.0	\$30,798	3.6	1.3
Women	55-64	1,636	16.2	0.0	\$30,950	3.6	1.2
Women	65-Up	490	4.8	0.0	\$16,798	3.4	1.2
Women	N/A	4	0.0	0.0	\$7,371	2.0	1.0
Women	Total	10,107	100.0	47.4	\$22,747	3.4	1.3
Men	00-19	800	8.0	0.0	\$4,470	2.5	1.4
Men	20-24	1,180	11.8	0.0	\$14,654	2.9	1.5
Men	25-34	2,186	21.9	0.0	\$27,874	3.2	1.4
Men	35-44	1,735	17.4	0.0	\$36,699	3.4	1.3
Men	45-54	2,056	20.6	0.0	\$46,194	3.5	1.2
Men	55-64	1,509	15.1	0.0	\$45,679	3.6	1.2
Men	65-Up	517	5.2	0.0	\$27,292	3.4	1.2
Men	N/A	4	0.0	0.0	\$24,680	3.0	1.3
Men	Total	9,987	100.0	46.9	\$32,401	3.3	1.3
N/A	N/A	1,217	100.0	0.0	\$7,409	1.9	1.1
N/A	Total	1,217	100.0	5.7	\$7,409	1.9	1.1
Total	00-19	1,605	7.5	0.0	\$4,232	2.6	1.4
Total	20-24	2,293	10.8	0.0	\$13,022	3.0	1.6
Total	25-34	4,197	19.7	0.0	\$23,622	3.2	1.4
Total	35-44	3,530	16.6	0.0	\$31,530	3.4	1.3
Total	45-54	4,309	20.2	0.0	\$38,144	3.6	1.2
Total	55-64	3,145	14.8	0.0	\$38,017	3.6	1.2
Total	65-Up	1,007	4.7	0.0	\$22,185	3.4	1.2
Total	N/A	1,225	5.7	0.0	\$7,466	1.9	1.1
Total	Total	21,311	100.0	100.0	\$26,395	3.2	1.3

Note: Persons worked at any time during the year.

County Determination: Based on county of employment in which the person made the most money in the year.

N/A: Represents persons with demographic data that is unavailable.

N/A = Nonresidents, individuals for whom demographic data are not available.

Source: Demographics of Persons Working in Wyoming by County, Industry, Age, & Gender, 2000-2017.

Research & Planning, Wyoming Department of Workforce Services.

Prepared by M. Moore, Research & Planning, WY DWS, 6/12/18.

Average Earnings by Age and Gender with Place of Work in Fremont County in 2010

Gender	Age Group	Number	Age Percent	Gender Percent	Average Annual Wage	Average Quarters Worked	Average Annual Employers
Women	00-19	737	7.3	0.0	\$3,879	2.6	1.5
Women	20-24	1,117	11.1	0.0	\$11,136	3.0	1.6
Women	25-34	2,060	20.5	0.0	\$19,533	3.2	1.4
Women	35-44	1,762	17.5	0.0	\$26,703	3.5	1.4
Women	45-54	2,180	21.7	0.0	\$31,587	3.6	1.3
Women	55-64	1,693	16.8	0.0	\$31,809	3.6	1.2
Women	65-Up	517	5.1	0.0	\$16,733	3.3	1.1
Women	N/A	3	0.0	0.0	\$1,777	1.3	1.0
Women	Total	10,069	100.0	47.3	\$23,235	3.4	1.4
Men	00-19	738	7.4	0.0	\$4,487	2.4	1.4
Men	20-24	1,137	11.3	0.0	\$14,758	2.9	1.6
Men	25-34	2,242	22.4	0.0	\$28,121	3.2	1.4
Men	35-44	1,771	17.7	0.0	\$38,716	3.4	1.3
Men	45-54	2,012	20.1	0.0	\$47,855	3.5	1.2
Men	55-64	1,593	15.9	0.0	\$46,659	3.5	1.2
Men	65-Up	536	5.3	0.0	\$25,679	3.3	1.2
Men	N/A	2	0.0	0.0	\$25,986	3.0	1.5
Men	Total	10,031	100.0	47.1	\$33,509	3.3	1.3
N/A	N/A	1,178	100.0	0.0	\$8,201	1.9	1.1
N/A	Total	1,178	100.0	5.5	\$8,201	1.9	1.1
Total	00-19	1,475	6.9	0.0	\$4,183	2.5	1.4
Total	20-24	2,254	10.6	0.0	\$12,963	2.9	1.6
Total	25-34	4,302	20.2	0.0	\$24,009	3.2	1.4
Total	35-44	3,533	16.6	0.0	\$32,725	3.4	1.3
Total	45-54	4,192	19.7	0.0	\$39,395	3.6	1.3
Total	55-64	3,286	15.4	0.0	\$39,008	3.6	1.2
Total	65-Up	1,053	4.9	0.0	\$21,287	3.3	1.2
Total	N/A	1,183	5.6	0.0	\$8,214	1.9	1.1
Total	Total	21,278	100.0	100.0	\$27,246	3.2	1.3

Note: Persons worked at any time during the year.

County Determination: Based on county of employment in which the person made the most money in the year.

N/A: Represents persons with demographic data that is unavailable.

N/A = Nonresidents, individuals for whom demographic data are not available.

Source: Demographics of Persons Working in Wyoming by County, Industry, Age, & Gender, 2000-2017.
Research & Planning, Wyoming Department of Workforce Services.

Prepared by M. Moore, Research & Planning, WY DWS, 6/12/18.

Average Earnings by Age and Gender with Place of Work in Fremont County in 2011

Gender	Age Group	Number	Age Percent	Gender Percent	Average Annual Wage	Average Quarters Worked	Average Annual Employers
Women	00-19	733	7.2	0.0	\$3,966	2.6	1.4
Women	20-24	1,132	11.2	0.0	\$10,899	3.0	1.6
Women	25-34	2,138	21.1	0.0	\$20,017	3.2	1.4
Women	35-44	1,716	16.9	0.0	\$27,495	3.5	1.4
Women	45-54	2,132	21.0	0.0	\$31,255	3.6	1.3
Women	55-64	1,751	17.3	0.0	\$32,274	3.6	1.2
Women	65-Up	541	5.3	0.0	\$18,750	3.3	1.1
Women	N/A	2	0.0	0.0	\$8,656	1.5	1.0
Women	Total	10,145	100.0	46.8	\$23,512	3.3	1.4
Men	00-19	684	6.7	0.0	\$4,974	2.5	1.4
Men	20-24	1,174	11.5	0.0	\$16,540	2.9	1.6
Men	25-34	2,323	22.8	0.0	\$30,378	3.2	1.4
Men	35-44	1,852	18.2	0.0	\$39,995	3.4	1.3
Men	45-54	1,934	19.0	0.0	\$48,340	3.5	1.2
Men	55-64	1,658	16.3	0.0	\$48,176	3.6	1.2
Men	65-Up	570	5.6	0.0	\$28,330	3.3	1.2
Men	N/A	2	0.0	0.0	\$32,125	3.5	1.5
Men	Total	10,197	100.0	47.0	\$35,014	3.3	1.3
N/A	N/A	1,353	100.0	0.0	\$10,003	1.9	1.1
N/A	Total	1,353	100.0	6.2	\$10,003	1.9	1.1
Total	00-19	1,417	6.5	0.0	\$4,453	2.5	1.4
Total	20-24	2,306	10.6	0.0	\$13,771	3.0	1.6
Total	25-34	4,461	20.6	0.0	\$25,412	3.2	1.4
Total	35-44	3,568	16.4	0.0	\$33,983	3.4	1.3
Total	45-54	4,066	18.7	0.0	\$39,382	3.6	1.3
Total	55-64	3,409	15.7	0.0	\$40,008	3.6	1.2
Total	65-Up	1,111	5.1	0.0	\$23,665	3.3	1.2
Total	N/A	1,357	6.3	0.0	\$10,033	1.9	1.1
Total	Total	21,695	100.0	100.0	\$28,076	3.2	1.3

Note: Persons worked at any time during the year.

County Determination: Based on county of employment in which the person made the most money in the year.

N/A: Represents persons with demographic data that is unavailable.

N/A = Nonresidents, individuals for whom demographic data are not available.

Source: Demographics of Persons Working in Wyoming by County, Industry, Age, & Gender, 2000-2017.
Research & Planning, Wyoming Department of Workforce Services.

Prepared by M. Moore, Research & Planning, WY DWS, 6/12/18.

Average Earnings by Age and Gender with Place of Work in Fremont County in 2012

Gender	Age Group	Number	Age Percent	Gender Percent	Average Annual Wage	Average Quarters Worked	Average Annual Employers
Women	00-19	697	6.8	0.0	\$4,114	2.5	1.5
Women	20-24	1,137	11.1	0.0	\$11,447	3.0	1.6
Women	25-34	2,162	21.1	0.0	\$20,765	3.2	1.4
Women	35-44	1,746	17.1	0.0	\$27,350	3.4	1.4
Women	45-54	2,109	20.6	0.0	\$31,863	3.6	1.3
Women	55-64	1,787	17.5	0.0	\$32,900	3.6	1.2
Women	65-Up	587	5.7	0.0	\$20,141	3.4	1.1
Women	N/A	1	0.0	0.0	\$7,432	4.0	1.0
Women	Total	10,226	100.0	46.9	\$24,091	3.3	1.4
Men	00-19	696	6.8	0.0	\$4,930	2.5	1.5
Men	20-24	1,145	11.2	0.0	\$17,483	2.9	1.6
Men	25-34	2,356	23.0	0.0	\$31,730	3.2	1.4
Men	35-44	1,838	17.9	0.0	\$41,940	3.4	1.3
Men	45-54	1,916	18.7	0.0	\$49,202	3.5	1.2
Men	55-64	1,673	16.3	0.0	\$49,533	3.6	1.2
Men	65-Up	621	6.1	0.0	\$28,810	3.3	1.2
Men	N/A	1	0.0	0.0	\$47,614	4.0	1.0
Men	Total	10,246	100.0	47.0	\$36,148	3.3	1.3
N/A	N/A	1,316	100.0	0.0	\$10,165	1.9	1.1
N/A	Total	1,316	100.0	6.0	\$10,165	1.9	1.1
Total	00-19	1,393	6.4	0.0	\$4,522	2.5	1.5
Total	20-24	2,282	10.5	0.0	\$14,476	3.0	1.6
Total	25-34	4,518	20.7	0.0	\$26,483	3.2	1.4
Total	35-44	3,584	16.4	0.0	\$34,832	3.4	1.3
Total	45-54	4,025	18.5	0.0	\$40,117	3.6	1.3
Total	55-64	3,460	15.9	0.0	\$40,943	3.6	1.2
Total	65-Up	1,208	5.5	0.0	\$24,597	3.3	1.2
Total	N/A	1,318	6.0	0.0	\$10,191	1.9	1.1
Total	Total	21,788	100.0	100.0	\$28,920	3.2	1.3

Note: Persons worked at any time during the year.

County Determination: Based on county of employment in which the person made the most money in the year.

N/A: Represents persons with demographic data that is unavailable.

N/A = Nonresidents, individuals for whom demographic data are not available.

Source: Demographics of Persons Working in Wyoming by County, Industry, Age, & Gender, 2000-2017.

Research & Planning, Wyoming Department of Workforce Services.

Prepared by M. Moore, Research & Planning, WY DWS, 6/12/18.

Average Earnings by Age and Gender with Place of Work in Fremont County in 2013

Gender	Age Group	Number	Age Percent	Gender Percent	Average Annual Wage	Average Quarters Worked	Average Annual Employers
Women	00-19	629	6.3	0.0	\$3,866	2.6	1.5
Women	20-24	1,079	10.8	0.0	\$11,297	3.0	1.6
Women	25-34	2,168	21.7	0.0	\$21,577	3.3	1.4
Women	35-44	1,697	17.0	0.0	\$27,679	3.5	1.3
Women	45-54	1,992	20.0	0.0	\$32,983	3.6	1.3
Women	55-64	1,789	17.9	0.0	\$33,770	3.6	1.2
Women	65-Up	613	6.1	0.0	\$21,233	3.3	1.1
Women	N/A	1	0.0	0.0	\$8,492	4.0	1.0
Women	Total	9,968	100.0	46.4	\$24,831	3.4	1.4
Men	00-19	623	6.2	0.0	\$5,087	2.6	1.5
Men	20-24	1,088	10.7	0.0	\$17,346	2.9	1.5
Men	25-34	2,372	23.4	0.0	\$32,933	3.3	1.4
Men	35-44	1,842	18.2	0.0	\$42,446	3.4	1.3
Men	45-54	1,849	18.3	0.0	\$46,910	3.5	1.2
Men	55-64	1,706	16.9	0.0	\$51,266	3.6	1.2
Men	65-Up	641	6.3	0.0	\$29,331	3.2	1.2
Men	N/A	1	0.0	0.0	\$50,612	4.0	2.0
Men	Total	10,122	100.0	47.1	\$36,692	3.3	1.3
N/A	N/A	1,411	100.0	0.0	\$9,849	1.9	1.1
N/A	Total	1,411	100.0	6.6	\$9,849	1.9	1.1
Total	00-19	1,252	5.8	0.0	\$4,474	2.6	1.5
Total	20-24	2,167	10.1	0.0	\$14,334	3.0	1.6
Total	25-34	4,540	21.1	0.0	\$27,510	3.3	1.4
Total	35-44	3,539	16.5	0.0	\$35,365	3.4	1.3
Total	45-54	3,841	17.9	0.0	\$39,687	3.5	1.3
Total	55-64	3,495	16.3	0.0	\$42,311	3.6	1.2
Total	65-Up	1,254	5.8	0.0	\$25,372	3.3	1.2
Total	N/A	1,413	6.6	0.0	\$9,877	1.9	1.1
Total	Total	21,501	100.0	100.0	\$29,431	3.2	1.3

Note: Persons worked at any time during the year.

County Determination: Based on county of employment in which the person made the most money in the year.

N/A: Represents persons with demographic data that is unavailable.

N/A = Nonresidents, individuals for whom demographic data are not available.

Source: Demographics of Persons Working in Wyoming by County, Industry, Age, & Gender, 2000-2017.
Research & Planning, Wyoming Department of Workforce Services.

Prepared by M. Moore, Research & Planning, WY DWS, 6/12/18.

Average Earnings by Age and Gender with Place of Work in Fremont County in 2014

Gender	Age Group	Number	Age Percent	Gender Percent	Average Annual Wage	Average Quarters Worked	Average Annual Employers
Women	00-19	693	7.0	0.0	\$3,920	2.5	1.5
Women	20-24	1,046	10.5	0.0	\$11,527	2.9	1.6
Women	25-34	2,163	21.7	0.0	\$21,438	3.3	1.4
Women	35-44	1,686	16.9	0.0	\$28,765	3.4	1.3
Women	45-54	1,922	19.3	0.0	\$33,741	3.6	1.3
Women	55-64	1,825	18.3	0.0	\$33,657	3.6	1.2
Women	65-Up	614	6.2	0.0	\$22,096	3.3	1.1
Women	N/A	1	0.0	0.0	\$7,430	4.0	1.0
Women	Total	9,950	100.0	45.9	\$25,074	3.3	1.4
Men	00-19	647	6.4	0.0	\$5,102	2.5	1.5
Men	20-24	1,080	10.7	0.0	\$17,272	3.0	1.6
Men	25-34	2,346	23.2	0.0	\$32,502	3.2	1.5
Men	35-44	1,856	18.4	0.0	\$44,172	3.4	1.3
Men	45-54	1,781	17.6	0.0	\$49,410	3.5	1.3
Men	55-64	1,733	17.2	0.0	\$52,427	3.5	1.2
Men	65-Up	647	6.4	0.0	\$30,043	3.3	1.2
Men	N/A	1	0.0	0.0	\$52,932	4.0	2.0
Men	Total	10,091	100.0	46.6	\$37,512	3.3	1.4
N/A	N/A	1,621	100.0	0.0	\$10,959	2.0	1.1
N/A	Total	1,621	100.0	7.5	\$10,959	2.0	1.1
Total	00-19	1,340	6.2	0.0	\$4,491	2.5	1.5
Total	20-24	2,126	9.8	0.0	\$14,445	2.9	1.6
Total	25-34	4,509	20.8	0.0	\$27,194	3.3	1.4
Total	35-44	3,542	16.4	0.0	\$36,838	3.4	1.3
Total	45-54	3,703	17.1	0.0	\$41,277	3.6	1.3
Total	55-64	3,558	16.4	0.0	\$42,799	3.6	1.2
Total	65-Up	1,261	5.8	0.0	\$26,173	3.3	1.1
Total	N/A	1,623	7.5	0.0	\$10,983	2.0	1.1
Total	Total	21,662	100.0	100.0	\$29,812	3.2	1.3

Note: Persons worked at any time during the year.

County Determination: Based on county of employment in which the person made the most money in the year.

N/A: Represents persons with demographic data that is unavailable.

N/A = Nonresidents, individuals for whom demographic data are not available.

Source: Demographics of Persons Working in Wyoming by County, Industry, Age, & Gender, 2000-2017.
Research & Planning, Wyoming Department of Workforce Services.

Prepared by M. Moore, Research & Planning, WY DWS, 6/12/18.

Average Earnings by Age and Gender with Place of Work in Fremont County in 2015

Gender	Age Group	Number	Age Percent	Gender Percent	Average Annual Wage	Average Quarters Worked	Average Annual Employers
Women	00-19	656	6.7	0.0	\$4,486	2.7	1.5
Women	20-24	1,010	10.3	0.0	\$11,716	2.9	1.6
Women	25-34	2,140	21.7	0.0	\$21,848	3.3	1.4
Women	35-44	1,741	17.7	0.0	\$29,735	3.5	1.4
Women	45-54	1,865	18.9	0.0	\$34,262	3.6	1.3
Women	55-64	1,810	18.4	0.0	\$34,748	3.6	1.2
Women	65-Up	624	6.3	0.0	\$22,556	3.4	1.1
Women	N/A	3	0.0	0.0	\$3,988	3.0	1.0
Women	Total	9,849	100.0	46.2	\$25,808	3.4	1.4
Men	00-19	647	6.6	0.0	\$4,771	2.5	1.4
Men	20-24	987	10.1	0.0	\$16,047	3.0	1.6
Men	25-34	2,227	22.9	0.0	\$30,432	3.2	1.4
Men	35-44	1,835	18.8	0.0	\$43,182	3.4	1.3
Men	45-54	1,691	17.4	0.0	\$48,525	3.5	1.3
Men	55-64	1,702	17.5	0.0	\$51,264	3.5	1.2
Men	65-Up	653	6.7	0.0	\$30,719	3.2	1.2
Men	N/A	1	0.0	0.0	\$51,808	4.0	1.0
Men	Total	9,743	100.0	45.7	\$36,473	3.3	1.3
N/A	N/A	1,722	100.0	0.0	\$11,624	2.0	1.1
N/A	Total	1,722	100.0	8.1	\$11,624	2.0	1.1
Total	00-19	1,303	6.1	0.0	\$4,628	2.6	1.4
Total	20-24	1,997	9.4	0.0	\$13,857	3.0	1.6
Total	25-34	4,367	20.5	0.0	\$26,226	3.3	1.4
Total	35-44	3,576	16.8	0.0	\$36,635	3.5	1.3
Total	45-54	3,556	16.7	0.0	\$41,045	3.5	1.3
Total	55-64	3,512	16.5	0.0	\$42,752	3.6	1.2
Total	65-Up	1,277	6.0	0.0	\$26,730	3.3	1.2
Total	N/A	1,726	8.1	0.0	\$11,634	2.0	1.1
Total	Total	21,314	100.0	100.0	\$29,537	3.2	1.3

Note: Persons worked at any time during the year.

County Determination: Based on county of employment in which the person made the most money in the year.

N/A: Represents persons with demographic data that is unavailable.

N/A = Nonresidents, individuals for whom demographic data are not available.

Source: Demographics of Persons Working in Wyoming by County, Industry, Age, & Gender, 2000-2017.
Research & Planning, Wyoming Department of Workforce Services.

Prepared by M. Moore, Research & Planning, WY DWS, 6/12/18.

Average Earnings by Age and Gender with Place of Work in Fremont County in 2016

Gender	Age Group	Number	Age Percent	Gender Percent	Average Annual Wage	Average Quarters Worked	Average Annual Employers
Women	00-19	544	5.8	0.0	\$4,725	2.7	1.5
Women	20-24	867	9.3	0.0	\$13,356	3.1	1.6
Women	25-34	2,011	21.6	0.0	\$22,201	3.3	1.4
Women	35-44	1,720	18.5	0.0	\$31,033	3.5	1.3
Women	45-54	1,709	18.4	0.0	\$34,014	3.6	1.3
Women	55-64	1,787	19.2	0.0	\$34,975	3.6	1.2
Women	65-Up	670	7.2	0.0	\$20,990	3.3	1.1
Women	N/A	3	0.0	0.0	\$9,574	2.3	1.0
Women	Total	9,311	100.0	46.7	\$26,516	3.4	1.3
Men	00-19	558	6.2	0.0	\$5,081	2.5	1.4
Men	20-24	905	10.0	0.0	\$14,597	2.9	1.6
Men	25-34	2,009	22.3	0.0	\$28,769	3.3	1.4
Men	35-44	1,731	19.2	0.0	\$42,212	3.4	1.3
Men	45-54	1,537	17.1	0.0	\$46,982	3.5	1.2
Men	55-64	1,612	17.9	0.0	\$48,112	3.5	1.2
Men	65-Up	653	7.2	0.0	\$28,868	3.3	1.1
Men	N/A	2	0.0	0.0	\$35,787	2.5	1.0
Men	Total	9,007	100.0	45.2	\$35,040	3.3	1.3
N/A	N/A	1,612	100.0	0.0	\$11,445	2.1	1.1
N/A	Total	1,612	100.0	8.1	\$11,445	2.1	1.1
Total	00-19	1,102	5.5	0.0	\$4,905	2.6	1.4
Total	20-24	1,772	8.9	0.0	\$13,989	3.0	1.6
Total	25-34	4,020	20.2	0.0	\$25,483	3.3	1.4
Total	35-44	3,451	17.3	0.0	\$36,640	3.5	1.3
Total	45-54	3,246	16.3	0.0	\$40,155	3.6	1.3
Total	55-64	3,399	17.1	0.0	\$41,206	3.6	1.2
Total	65-Up	1,323	6.6	0.0	\$24,879	3.3	1.1
Total	N/A	1,617	8.1	0.0	\$11,471	2.1	1.1
Total	Total	19,930	100.0	100.0	\$29,149	3.3	1.3

Note: Persons worked at any time during the year.

County Determination: Based on county of employment in which the person made the most money in the year.

N/A: Represents persons with demographic data that is unavailable.

N/A = Nonresidents, individuals for whom demographic data are not available.

Source: Demographics of Persons Working in Wyoming by County, Industry, Age, & Gender, 2000-2017.

Research & Planning, Wyoming Department of Workforce Services.

Prepared by M. Moore, Research & Planning, WY DWS, 6/12/18.

Average Earnings by Age and Gender with Place of Work in Fremont County in 2017

Gender	Age Group	Number	Age Percent	Gender Percent	Average Annual Wage	Average Quarters Worked	Average Annual Employers
Women	00-19	518	5.7	0.0	\$4,392	2.6	1.4
Women	20-24	829	9.2	0.0	\$13,517	3.1	1.6
Women	25-34	1,920	21.2	0.0	\$22,971	3.3	1.4
Women	35-44	1,737	19.2	0.0	\$32,096	3.5	1.3
Women	45-54	1,632	18.0	0.0	\$34,939	3.6	1.3
Women	55-64	1,753	19.4	0.0	\$35,384	3.6	1.2
Women	65-Up	668	7.4	0.0	\$22,331	3.4	1.1
Women	N/A	2	0.0	0.0	\$19,327	2.5	1.0
Women	Total	9,059	100.0	46.4	\$27,303	3.4	1.3
Men	00-19	517	6.0	0.0	\$4,956	2.5	1.4
Men	20-24	823	9.5	0.0	\$15,281	3.0	1.6
Men	25-34	1,963	22.7	0.0	\$29,394	3.3	1.4
Men	35-44	1,638	18.9	0.0	\$44,844	3.4	1.3
Men	45-54	1,446	16.7	0.0	\$47,869	3.5	1.2
Men	55-64	1,609	18.6	0.0	\$49,071	3.6	1.2
Men	65-Up	668	7.7	0.0	\$32,763	3.3	1.1
Men	N/A	2	0.0	0.0	\$35,025	2.5	1.0
Men	Total	8,666	100.0	44.4	\$36,513	3.3	1.3
N/A	N/A	1,814	100.0	0.0	\$12,173	2.1	1.1
N/A	Total	1,814	100.0	9.3	\$12,173	2.1	1.1
Total	00-19	1,035	5.3	0.0	\$4,674	2.5	1.4
Total	20-24	1,652	8.5	0.0	\$14,396	3.0	1.6
Total	25-34	3,883	19.9	0.0	\$26,218	3.3	1.4
Total	35-44	3,375	17.3	0.0	\$38,283	3.5	1.3
Total	45-54	3,078	15.8	0.0	\$41,014	3.6	1.3
Total	55-64	3,362	17.2	0.0	\$41,934	3.6	1.2
Total	65-Up	1,336	6.8	0.0	\$27,547	3.4	1.1
Total	N/A	1,818	9.3	0.0	\$12,206	2.1	1.1
Total	Total	19,539	100.0	100.0	\$29,984	3.3	1.3

Note: Persons worked at any time during the year.

County Determination: Based on county of employment in which the person made the most money in the year.

N/A: Represents persons with demographic data that is unavailable.

N/A = Nonresidents, individuals for whom demographic data are not available.

Source: Demographics of Persons Working in Wyoming by County, Industry, Age, & Gender, 2000-2017.

Research & Planning, Wyoming Department of Workforce Services.

Prepared by M. Moore, Research & Planning, WY DWS, 6/12/18.