

# Crook County at a Glance, 2017

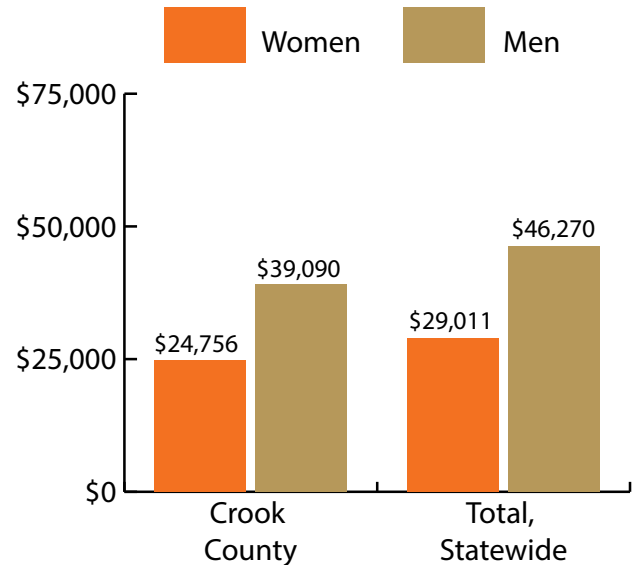
Demographics of Persons Working in Wyoming by County, Industry, Age, & Gender, 2000-2017

**Table: Total Number of Persons Working in Crook County, WY, at Any Time by Gender and Age, 2016-2017**

Gender	2016	2017	Change	
			N	%
Women	1,223	1,218	-5	-0.4
Men	1,298	1,260	-38	-2.9
Nonresidents	295	335	40	13.6
<b>Total</b>	<b>2,816</b>	<b>2,813</b>	<b>-3</b>	<b>-0.1</b>

Age	2016	2017	Change	
			N	%
00-19	236	233	-3	-1.3
20-24	223	207	-16	-7.2
25-34	478	456	-22	-4.6
35-44	434	443	9	2.1
45-54	447	427	-20	-4.5
55-64	505	510	5	1.0
65-Up	196	200	4	2.0
Nonresidents	297	337	40	13.5
<b>Total</b>	<b>2,816</b>	<b>2,813</b>	<b>-3</b>	<b>-0.1</b>



### Women's Wages as % of Men's Wages

Crook County: 63.3%

Total: 62.7%

Figure: Average Annual Wages by Gender, 2017

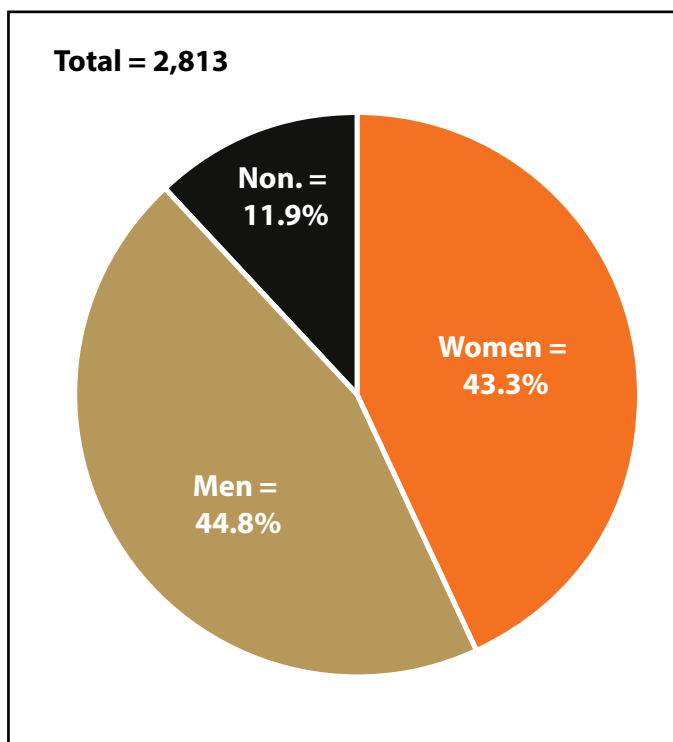


Figure: Persons Working by Gender, 2017

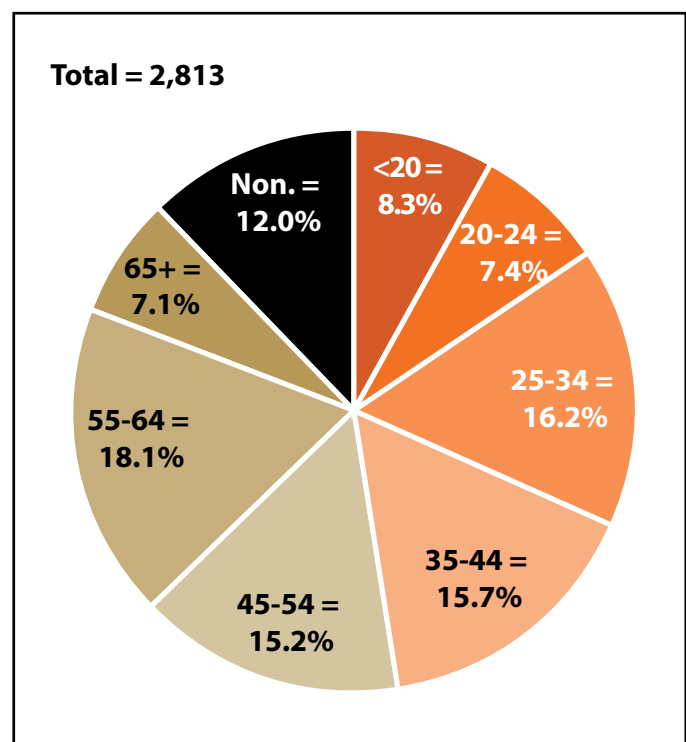


Figure: Persons Working by Age, 2017

Note: Nonresidents are individuals for whom demographic data are not available.

Source: Demographics of Persons Working in Wyoming by County, Industry, Age, & Gender, 2000-2017. Research & Planning, Wyoming Department of Workforce Services. Prepared by M. Moore, Research & Planning, WY DWS, 6/12/18.

# Persons Working in Crook County by Gender and Age, 2000-2017

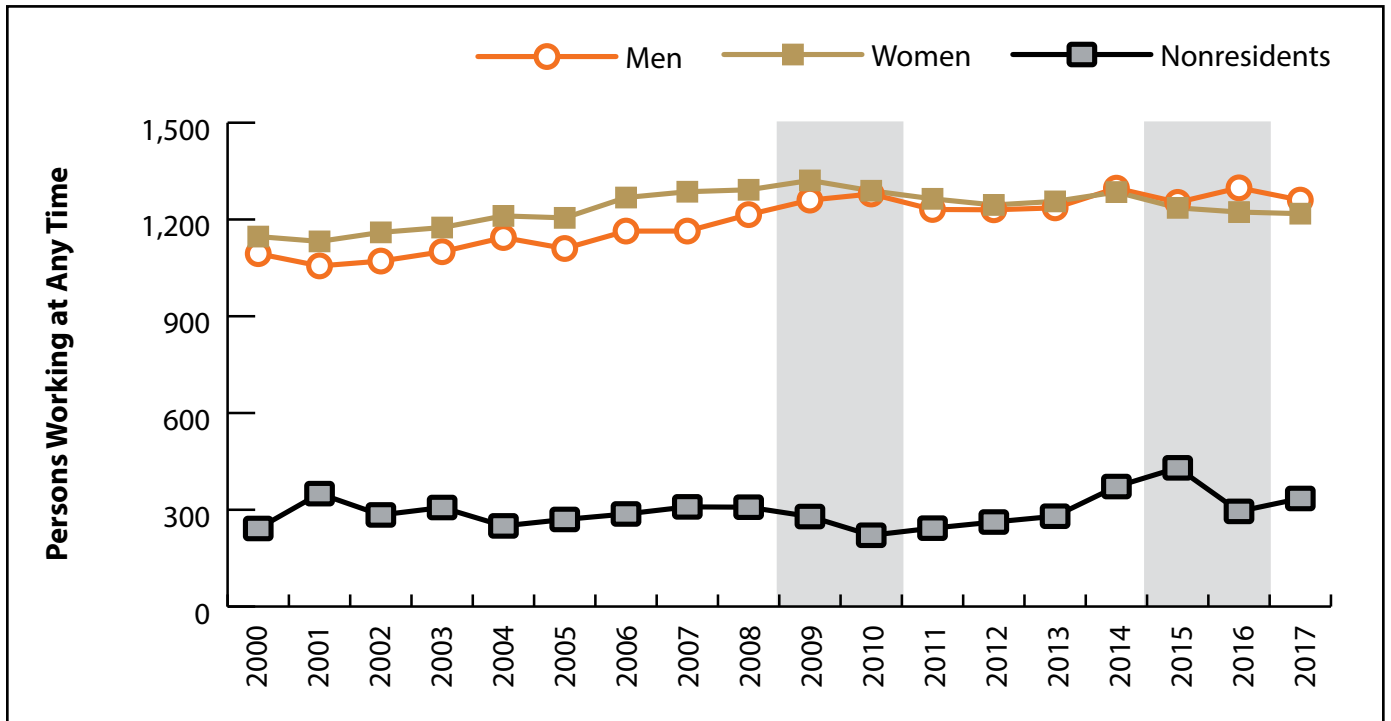


Figure: Persons Working in Crook County at Any Time by Gender, 2000-2017

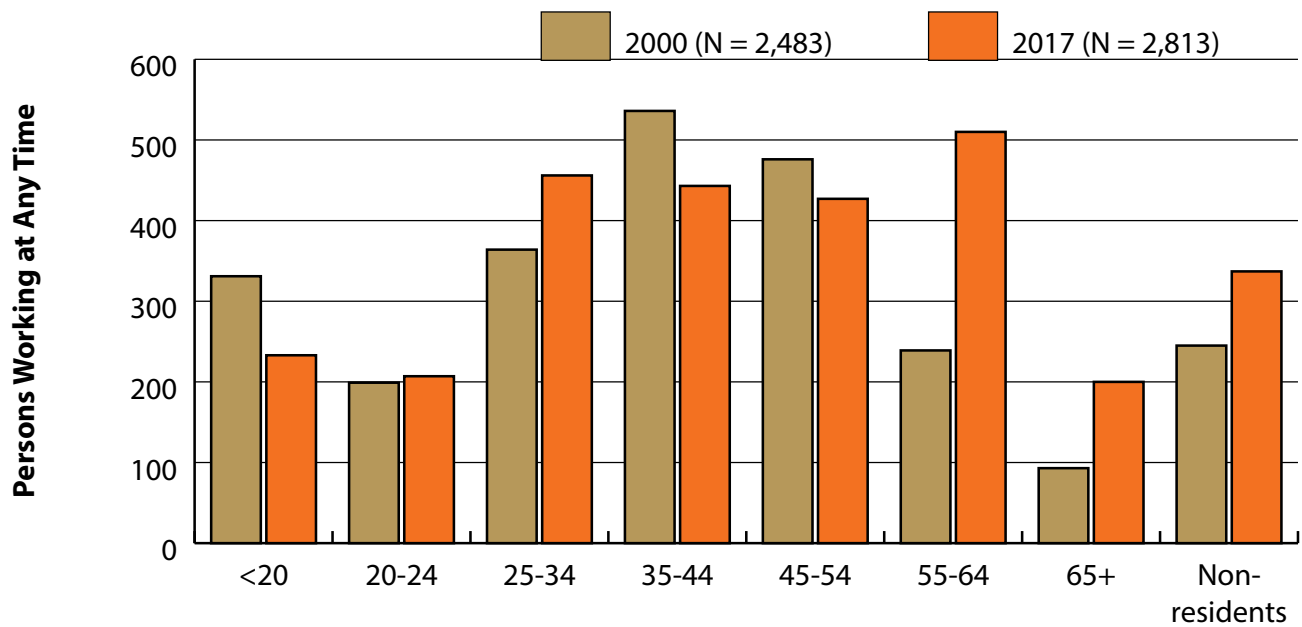


Figure: Persons Working in Crook County at Any Time by Age, 2000-2017

Note: Nonresidents are individuals for whom demographic data are not available.  
 Shaded areas indicate periods of economic downturn: 2009Q1-2010Q1 and 2015Q2-2016Q4.  
 Source: Demographics of Persons Working in Wyoming by County, Industry, Age, & Gender, 2000-2017. Research & Planning, Wyoming Department of Workforce Services. Prepared by M. Moore, Research & Planning, WY DWS, 6/12/18.

## Wages for Persons Working in Crook County by Gender, 2000-2017

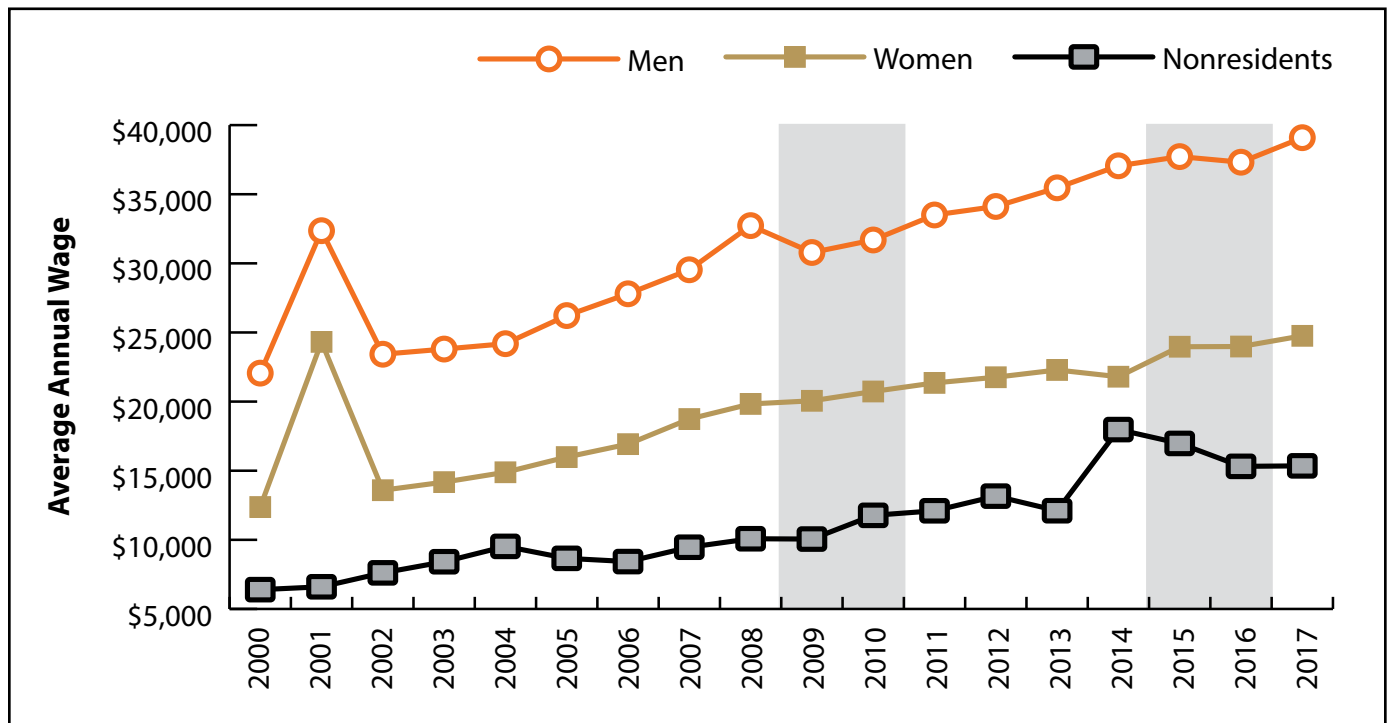


Figure: Average Annual Wage for Persons Working in Crook County at Any Time by Age, 2000-2017

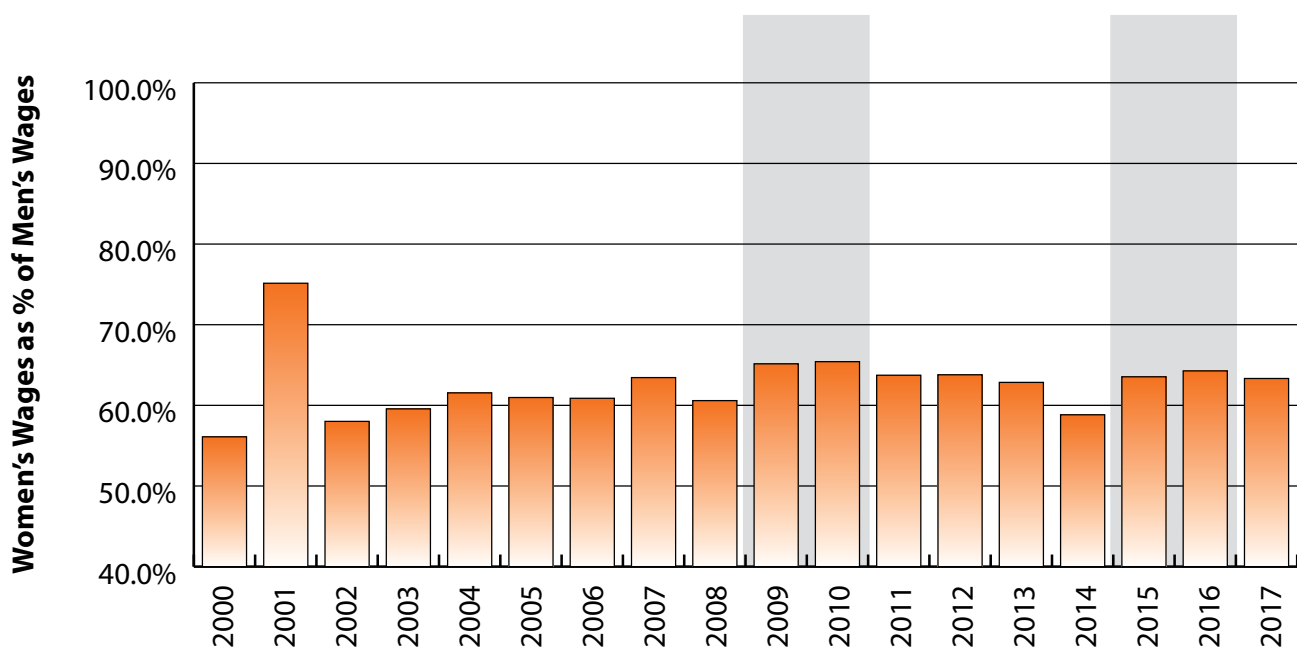


Figure: Women's Average Annual Wages as a Percent of Men's Wages for Persons Working in Crook County at Any Time by Age, 2000-2017

Note: Nonresidents are individuals for whom demographic data are not available.

Shaded areas indicate periods of economic downturn: 2009Q1-2010Q1 and 2015Q2-2016Q4.

Source: Demographics of Persons Working in Wyoming by County, Industry, Age, & Gender, 2000-2017. Research & Planning, Wyoming Department of Workforce Services. Prepared by M. Moore, Research & Planning, WY DWS, 6/12/18.

### Average Earnings by Age and Gender with Place of Work in Crook County in 2000

Gender	Age Group	Number	Age Percent	Gender Percent	Average Annual Wage	Average Quarters Worked	Average Annual Employers
Women	00-19	176	15.3	0.0	\$2,556	2.7	1.7
Women	20-24	87	7.6	0.0	\$6,456	2.9	1.7
Women	25-34	174	15.2	0.0	\$11,797	3.1	1.5
Women	35-44	279	24.3	0.0	\$15,278	3.5	1.4
Women	45-54	256	22.3	0.0	\$17,560	3.5	1.3
Women	55-64	126	11.0	0.0	\$15,488	3.4	1.2
Women	65-Up	47	4.1	0.0	\$8,167	3.3	1.1
Women	N/A	2	0.2	0.0	\$17,615	2.5	1.0
Women	Total	1,147	100.0	46.2	\$12,374	3.3	1.4
Men	00-19	155	14.2	0.0	\$3,418	2.5	1.5
Men	20-24	112	10.2	0.0	\$12,038	2.8	1.5
Men	25-34	190	17.4	0.0	\$22,584	3.3	1.4
Men	35-44	257	23.5	0.0	\$27,724	3.4	1.3
Men	45-54	220	20.1	0.0	\$32,813	3.5	1.2
Men	55-64	113	10.3	0.0	\$25,720	3.3	1.1
Men	65-Up	46	4.2	0.0	\$15,399	3.0	1.1
Men	N/A	1	0.1	0.0	\$3,480	1.0	1.0
Men	Total	1,094	100.0	44.1	\$22,058	3.2	1.3
N/A	N/A	242	100.0	0.0	\$3,780	1.5	1.0
N/A	Total	242	100.0	9.7	\$3,780	1.5	1.0
Total	00-19	331	13.3	0.0	\$2,959	2.6	1.6
Total	20-24	199	8.0	0.0	\$9,598	2.8	1.6
Total	25-34	364	14.7	0.0	\$17,428	3.2	1.4
Total	35-44	536	21.6	0.0	\$21,246	3.5	1.4
Total	45-54	476	19.2	0.0	\$24,610	3.5	1.3
Total	55-64	239	9.6	0.0	\$20,326	3.4	1.2
Total	65-Up	93	3.7	0.0	\$11,744	3.1	1.1
Total	N/A	245	9.9	0.0	\$3,892	1.5	1.0
Total	Total	2,483	100.0	100.0	\$15,803	3.1	1.3

Note: Persons worked at any time during the year.

County Determination: Based on county of employment in which the person made the most money in the year.

N/A: Represents persons with demographic data that is unavailable.

N/A = Nonresidents, individuals for whom demographic data are not available.

Source: Demographics of Persons Working in Wyoming by County, Industry, Age, & Gender, 2000-2017.

Research & Planning, Wyoming Department of Workforce Services.

Prepared by M. Moore, Research & Planning, WY DWS, 6/12/18.

### Average Earnings by Age and Gender with Place of Work in Crook County in 2001

Gender	Age Group	Number	Age Percent	Gender Percent	Average Annual Wage	Average Quarters Worked	Average Annual Employers
Women	00-19	175	15.5	0.0	\$2,364	2.4	1.5
Women	20-24	85	7.5	0.0	\$7,776	2.9	1.6
Women	25-34	156	13.8	0.0	\$34,619	3.2	1.5
Women	35-44	268	23.7	0.0	\$27,982	3.3	1.5
Women	45-54	265	23.4	0.0	\$35,971	3.5	1.2
Women	55-64	134	11.8	0.0	\$25,928	3.4	1.2
Women	65-Up	48	4.2	0.0	\$10,608	3.3	1.1
Women	N/A	1	0.1	0.0	\$37,163	4.0	1.0
Women	Total	1,132	100.0	44.6	\$24,318	3.2	1.4
Men	00-19	141	13.4	0.0	\$4,219	2.4	1.5
Men	20-24	123	11.6	0.0	\$12,012	2.8	1.6
Men	25-34	179	17.0	0.0	\$47,293	3.2	1.3
Men	35-44	237	22.4	0.0	\$40,762	3.4	1.3
Men	45-54	217	20.5	0.0	\$36,540	3.4	1.2
Men	55-64	113	10.7	0.0	\$40,840	3.5	1.2
Men	65-Up	46	4.4	0.0	\$31,115	3.0	1.1
Men	Total	1,056	100.0	41.6	\$32,362	3.1	1.3
N/A	N/A	350	100.0	0.0	\$7,822	1.5	1.1
N/A	Total	350	100.0	13.8	\$7,822	1.5	1.1
Total	00-19	316	12.5	0.0	\$3,192	2.4	1.5
Total	20-24	208	8.2	0.0	\$10,281	2.8	1.6
Total	25-34	335	13.2	0.0	\$41,391	3.2	1.4
Total	35-44	505	19.9	0.0	\$33,980	3.4	1.4
Total	45-54	482	19.0	0.0	\$36,227	3.5	1.2
Total	55-64	247	9.7	0.0	\$32,750	3.4	1.2
Total	65-Up	94	3.7	0.0	\$20,643	3.1	1.1
Total	N/A	351	13.8	0.0	\$7,905	1.5	1.1
Total	Total	2,538	100.0	100.0	\$25,390	2.9	1.3

Note: Persons worked at any time during the year.

County Determination: Based on county of employment in which the person made the most money in the year.

N/A: Represents persons with demographic data that is unavailable.

N/A = Nonresidents, individuals for whom demographic data are not available.

Source: Demographics of Persons Working in Wyoming by County, Industry, Age, & Gender, 2000-2017.

Research & Planning, Wyoming Department of Workforce Services.

Prepared by M. Moore, Research & Planning, WY DWS, 6/12/18.

### Average Earnings by Age and Gender with Place of Work in Crook County in 2002

Gender	Age Group	Number	Age Percent	Gender Percent	Average Annual Wage	Average Quarters Worked	Average Annual Employers
Women	00-19	175	15.1	0.0	\$2,477	2.5	1.5
Women	20-24	83	7.2	0.0	\$6,481	2.9	1.8
Women	25-34	163	14.1	0.0	\$12,772	3.1	1.5
Women	35-44	260	22.4	0.0	\$17,232	3.3	1.4
Women	45-54	281	24.2	0.0	\$19,417	3.5	1.3
Women	55-64	141	12.2	0.0	\$16,379	3.2	1.1
Women	65-Up	56	4.8	0.0	\$7,491	3.3	1.2
Women	N/A	1	0.1	0.0	\$45,769	4.0	2.0
Women	Total	1,160	100.0	46.1	\$13,590	3.2	1.4
Men	00-19	142	13.3	0.0	\$4,019	2.4	1.3
Men	20-24	140	13.1	0.0	\$13,512	2.8	1.5
Men	25-34	181	16.9	0.0	\$21,573	3.1	1.3
Men	35-44	213	19.9	0.0	\$32,506	3.5	1.2
Men	45-54	226	21.1	0.0	\$34,430	3.4	1.1
Men	55-64	128	12.0	0.0	\$26,683	3.4	1.1
Men	65-Up	41	3.8	0.0	\$14,670	3.1	1.1
Men	Total	1,071	100.0	42.6	\$23,426	3.1	1.2
N/A	N/A	284	100.0	0.0	\$7,589	1.7	1.1
N/A	Total	284	100.0	11.3	\$7,589	1.7	1.1
Total	00-19	317	12.6	0.0	\$3,168	2.5	1.4
Total	20-24	223	8.9	0.0	\$10,895	2.8	1.6
Total	25-34	344	13.7	0.0	\$17,403	3.1	1.4
Total	35-44	473	18.8	0.0	\$24,110	3.4	1.3
Total	45-54	507	20.2	0.0	\$26,109	3.5	1.2
Total	55-64	269	10.7	0.0	\$21,282	3.3	1.1
Total	65-Up	97	3.9	0.0	\$10,525	3.2	1.1
Total	N/A	285	11.3	0.0	\$7,723	1.7	1.1
Total	Total	2,515	100.0	100.0	\$17,101	3.0	1.3

Note: Persons worked at any time during the year.

County Determination: Based on county of employment in which the person made the most money in the year.

N/A: Represents persons with demographic data that is unavailable.

N/A = Nonresidents, individuals for whom demographic data are not available.

Source: Demographics of Persons Working in Wyoming by County, Industry, Age, & Gender, 2000-2017.  
Research & Planning, Wyoming Department of Workforce Services.

Prepared by M. Moore, Research & Planning, WY DWS, 6/12/18.

### Average Earnings by Age and Gender with Place of Work in Crook County in 2003

Gender	Age Group	Number	Age Percent	Gender Percent	Average Annual Wage	Average Quarters Worked	Average Annual Employers
Women	00-19	173	14.7	0.0	\$2,661	2.6	1.5
Women	20-24	98	8.3	0.0	\$6,511	2.8	1.7
Women	25-34	151	12.9	0.0	\$12,168	3.2	1.5
Women	35-44	255	21.7	0.0	\$19,347	3.4	1.4
Women	45-54	293	24.9	0.0	\$20,179	3.6	1.2
Women	55-64	148	12.6	0.0	\$16,389	3.3	1.1
Women	65-Up	56	4.8	0.0	\$7,263	3.0	1.1
Women	N/A	1	0.1	0.0	\$41,469	4.0	1.0
Women	Total	1,175	100.0	45.5	\$14,175	3.2	1.4
Men	00-19	141	12.8	0.0	\$4,642	2.4	1.4
Men	20-24	135	12.3	0.0	\$13,215	2.9	1.5
Men	25-34	189	17.2	0.0	\$23,087	3.2	1.3
Men	35-44	211	19.2	0.0	\$29,652	3.3	1.2
Men	45-54	246	22.4	0.0	\$35,144	3.4	1.2
Men	55-64	126	11.5	0.0	\$27,695	3.3	1.2
Men	65-Up	52	4.7	0.0	\$18,940	3.1	1.2
Men	Total	1,100	100.0	42.6	\$23,799	3.1	1.3
N/A	N/A	307	100.0	0.0	\$6,648	1.5	1.0
N/A	Total	307	100.0	11.9	\$6,648	1.5	1.0
Total	00-19	314	12.2	0.0	\$3,551	2.5	1.5
Total	20-24	233	9.0	0.0	\$10,395	2.9	1.6
Total	25-34	340	13.2	0.0	\$18,237	3.2	1.4
Total	35-44	466	18.0	0.0	\$24,013	3.4	1.3
Total	45-54	539	20.9	0.0	\$27,009	3.5	1.2
Total	55-64	274	10.6	0.0	\$21,588	3.3	1.2
Total	65-Up	108	4.2	0.0	\$12,885	3.0	1.1
Total	N/A	308	11.9	0.0	\$6,761	1.5	1.0
Total	Total	2,582	100.0	100.0	\$17,380	3.0	1.3

Note: Persons worked at any time during the year.

County Determination: Based on county of employment in which the person made the most money in the year.

N/A: Represents persons with demographic data that is unavailable.

N/A = Nonresidents, individuals for whom demographic data are not available.

Source: Demographics of Persons Working in Wyoming by County, Industry, Age, & Gender, 2000-2017.  
Research & Planning, Wyoming Department of Workforce Services.

Prepared by M. Moore, Research & Planning, WY DWS, 6/12/18.

### Average Earnings by Age and Gender with Place of Work in Crook County in 2004

Gender	Age Group	Number	Age Percent	Gender Percent	Average Annual Wage	Average Quarters Worked	Average Annual Employers
Women	00-19	156	12.9	0.0	\$2,604	2.5	1.6
Women	20-24	112	9.2	0.0	\$6,513	2.7	1.7
Women	25-34	153	12.6	0.0	\$12,204	3.1	1.5
Women	35-44	274	22.6	0.0	\$19,250	3.5	1.4
Women	45-54	296	24.4	0.0	\$20,305	3.5	1.3
Women	55-64	171	14.1	0.0	\$19,122	3.5	1.2
Women	65-Up	48	4.0	0.0	\$8,875	3.3	1.1
Women	N/A	1	0.1	0.0	\$44,250	4.0	1.0
Women	<b>Total</b>	<b>1,211</b>	<b>100.0</b>	<b>46.5</b>	<b>\$14,887</b>	<b>3.2</b>	<b>1.4</b>
Men	00-19	137	12.0	0.0	\$3,424	2.4	1.3
Men	20-24	135	11.8	0.0	\$12,904	2.9	1.6
Men	25-34	208	18.2	0.0	\$24,163	3.2	1.3
Men	35-44	219	19.1	0.0	\$30,695	3.4	1.3
Men	45-54	251	21.9	0.0	\$35,731	3.4	1.2
Men	55-64	126	11.0	0.0	\$26,657	3.3	1.2
Men	65-Up	68	5.9	0.0	\$20,364	3.0	1.1
Men	<b>Total</b>	<b>1,144</b>	<b>100.0</b>	<b>43.9</b>	<b>\$24,188</b>	<b>3.2</b>	<b>1.3</b>
N/A	N/A	250	100.0	0.0	\$8,139	1.7	1.0
N/A	<b>Total</b>	<b>250</b>	<b>100.0</b>	<b>9.6</b>	<b>\$8,139</b>	<b>1.7</b>	<b>1.0</b>
Total	00-19	293	11.2	0.0	\$2,987	2.5	1.5
Total	20-24	247	9.5	0.0	\$10,006	2.8	1.6
Total	25-34	361	13.9	0.0	\$19,095	3.2	1.4
Total	35-44	493	18.9	0.0	\$24,334	3.5	1.3
Total	45-54	547	21.0	0.0	\$27,384	3.5	1.3
Total	55-64	297	11.4	0.0	\$22,318	3.4	1.2
Total	65-Up	116	4.5	0.0	\$15,610	3.1	1.1
Total	N/A	251	9.6	0.0	\$8,283	1.7	1.0
<b>Total</b>	<b>Total</b>	<b>2,605</b>	<b>100.0</b>	<b>100.0</b>	<b>\$18,324</b>	<b>3.1</b>	<b>1.3</b>

Note: Persons worked at any time during the year.

County Determination: Based on county of employment in which the person made the most money in the year.

N/A: Represents persons with demographic data that is unavailable.

N/A = Nonresidents, individuals for whom demographic data are not available.

Source: Demographics of Persons Working in Wyoming by County, Industry, Age, & Gender, 2000-2017.  
Research & Planning, Wyoming Department of Workforce Services.

Prepared by M. Moore, Research & Planning, WY DWS, 6/12/18.



### Average Earnings by Age and Gender with Place of Work in Crook County in 2005

Gender	Age Group	Number	Age Percent	Gender Percent	Average Annual Wage	Average Quarters Worked	Average Annual Employers
Women	00-19	150	12.4	0.0	\$2,752	2.5	1.6
Women	20-24	104	8.6	0.0	\$7,782	2.8	1.6
Women	25-34	155	12.9	0.0	\$13,741	3.2	1.5
Women	35-44	250	20.7	0.0	\$20,978	3.5	1.5
Women	45-54	314	26.1	0.0	\$20,311	3.5	1.3
Women	55-64	180	14.9	0.0	\$20,683	3.6	1.2
Women	65-Up	51	4.2	0.0	\$10,176	3.2	1.1
Women	N/A	1	0.1	0.0	\$50,103	4.0	1.0
Women	Total	1,205	100.0	46.6	\$15,988	3.3	1.4
Men	00-19	152	13.7	0.0	\$3,925	2.4	1.4
Men	20-24	119	10.7	0.0	\$15,463	2.9	1.5
Men	25-34	210	18.9	0.0	\$24,455	3.2	1.3
Men	35-44	190	17.1	0.0	\$34,466	3.5	1.2
Men	45-54	244	22.0	0.0	\$39,580	3.5	1.2
Men	55-64	127	11.4	0.0	\$27,629	3.4	1.2
Men	65-Up	67	6.0	0.0	\$26,849	3.2	1.2
Men	N/A	1	0.1	0.0	\$20,929	3.0	1.0
Men	Total	1,110	100.0	42.9	\$26,222	3.2	1.3
N/A	N/A	270	100.0	0.0	\$8,453	1.7	1.0
N/A	Total	270	100.0	10.4	\$8,453	1.7	1.0
Total	00-19	302	11.7	0.0	\$3,342	2.4	1.5
Total	20-24	223	8.6	0.0	\$11,881	2.9	1.5
Total	25-34	365	14.1	0.0	\$19,905	3.2	1.4
Total	35-44	440	17.0	0.0	\$26,802	3.5	1.3
Total	45-54	558	21.6	0.0	\$28,737	3.5	1.2
Total	55-64	307	11.9	0.0	\$23,556	3.5	1.2
Total	65-Up	118	4.6	0.0	\$19,642	3.2	1.1
Total	N/A	272	10.5	0.0	\$8,652	1.7	1.0
Total	Total	2,585	100.0	100.0	\$19,596	3.1	1.3

Note: Persons worked at any time during the year.

County Determination: Based on county of employment in which the person made the most money in the year.

N/A: Represents persons with demographic data that is unavailable.

N/A = Nonresidents, individuals for whom demographic data are not available.

Source: Demographics of Persons Working in Wyoming by County, Industry, Age, & Gender, 2000-2017.

Research & Planning, Wyoming Department of Workforce Services.

Prepared by M. Moore, Research & Planning, WY DWS, 6/12/18.

### Average Earnings by Age and Gender with Place of Work in Crook County in 2006

Gender	Age Group	Number	Age Percent	Gender Percent	Average Annual Wage	Average Quarters Worked	Average Annual Employers
Women	00-19	149	11.8	0.0	\$2,656	2.6	1.6
Women	20-24	110	8.7	0.0	\$8,360	2.9	1.8
Women	25-34	199	15.7	0.0	\$14,705	3.1	1.5
Women	35-44	251	19.8	0.0	\$20,872	3.4	1.4
Women	45-54	307	24.2	0.0	\$22,729	3.6	1.4
Women	55-64	187	14.7	0.0	\$21,802	3.6	1.2
Women	65-Up	63	5.0	0.0	\$13,600	3.2	1.1
Women	N/A	2	0.2	0.0	\$32,038	3.5	1.0
Women	Total	1,268	100.0	46.6	\$16,922	3.3	1.4
Men	00-19	149	12.8	0.0	\$5,204	2.6	1.6
Men	20-24	128	11.0	0.0	\$18,955	2.9	1.4
Men	25-34	213	18.3	0.0	\$27,220	3.2	1.3
Men	35-44	196	16.8	0.0	\$33,497	3.3	1.2
Men	45-54	263	22.6	0.0	\$38,688	3.4	1.2
Men	55-64	141	12.1	0.0	\$31,968	3.5	1.2
Men	65-Up	74	6.4	0.0	\$28,489	3.3	1.1
Men	Total	1,164	100.0	42.8	\$27,797	3.2	1.3
N/A	N/A	287	100.0	0.0	\$9,478	2.0	1.0
N/A	Total	287	100.0	10.6	\$9,478	2.0	1.0
Total	00-19	298	11.0	0.0	\$3,930	2.6	1.6
Total	20-24	238	8.8	0.0	\$14,059	2.9	1.6
Total	25-34	412	15.2	0.0	\$21,175	3.2	1.4
Total	35-44	447	16.4	0.0	\$26,408	3.4	1.4
Total	45-54	570	21.0	0.0	\$30,093	3.5	1.3
Total	55-64	328	12.1	0.0	\$26,172	3.5	1.2
Total	65-Up	137	5.0	0.0	\$21,642	3.2	1.1
Total	N/A	289	10.6	0.0	\$9,634	2.0	1.0
Total	Total	2,719	100.0	100.0	\$20,791	3.1	1.3

Note: Persons worked at any time during the year.

County Determination: Based on county of employment in which the person made the most money in the year.

N/A: Represents persons with demographic data that is unavailable.

N/A = Nonresidents, individuals for whom demographic data are not available.

Source: Demographics of Persons Working in Wyoming by County, Industry, Age, & Gender, 2000-2017.  
Research & Planning, Wyoming Department of Workforce Services.

Prepared by M. Moore, Research & Planning, WY DWS, 6/12/18.

### Average Earnings by Age and Gender with Place of Work in Crook County in 2007

Gender	Age Group	Number	Age Percent	Gender Percent	Average Annual Wage	Average Quarters Worked	Average Annual Employers
Women	00-19	138	10.7	0.0	\$2,753	2.6	1.6
Women	20-24	129	10.0	0.0	\$7,520	2.7	1.8
Women	25-34	205	15.9	0.0	\$17,149	3.3	1.4
Women	35-44	218	17.0	0.0	\$23,675	3.6	1.5
Women	45-54	319	24.8	0.0	\$25,226	3.5	1.4
Women	55-64	201	15.6	0.0	\$24,445	3.6	1.2
Women	65-Up	74	5.8	0.0	\$14,123	3.3	1.1
Women	N/A	2	0.2	0.0	\$32,292	3.0	1.0
Women	Total	1,286	100.0	46.6	\$18,738	3.3	1.4
Men	00-19	141	12.1	0.0	\$5,535	2.6	1.5
Men	20-24	130	11.2	0.0	\$21,187	3.1	1.4
Men	25-34	228	19.6	0.0	\$28,244	3.1	1.3
Men	35-44	195	16.8	0.0	\$36,746	3.4	1.2
Men	45-54	246	21.1	0.0	\$39,313	3.4	1.2
Men	55-64	153	13.1	0.0	\$36,908	3.6	1.2
Men	65-Up	70	6.0	0.0	\$27,368	3.5	1.2
Men	N/A	1	0.1	0.0	\$5,575	2.0	1.0
Men	Total	1,164	100.0	42.2	\$29,535	3.3	1.3
N/A	N/A	309	100.0	0.0	\$10,120	2.0	1.1
N/A	Total	309	100.0	11.2	\$10,120	2.0	1.1
Total	00-19	279	10.1	0.0	\$4,159	2.6	1.6
Total	20-24	259	9.4	0.0	\$14,380	2.9	1.6
Total	25-34	433	15.7	0.0	\$22,991	3.2	1.3
Total	35-44	413	15.0	0.0	\$29,846	3.5	1.4
Total	45-54	565	20.5	0.0	\$31,359	3.5	1.3
Total	55-64	354	12.8	0.0	\$29,831	3.6	1.2
Total	65-Up	144	5.2	0.0	\$20,561	3.4	1.2
Total	N/A	312	11.3	0.0	\$10,248	2.0	1.1
Total	Total	2,759	100.0	100.0	\$22,328	3.1	1.3

Note: Persons worked at any time during the year.

County Determination: Based on county of employment in which the person made the most money in the year.

N/A: Represents persons with demographic data that is unavailable.

N/A = Nonresidents, individuals for whom demographic data are not available.

Source: Demographics of Persons Working in Wyoming by County, Industry, Age, & Gender, 2000-2017.  
Research & Planning, Wyoming Department of Workforce Services.

Prepared by M. Moore, Research & Planning, WY DWS, 6/12/18.

### Average Earnings by Age and Gender with Place of Work in Crook County in 2008

Gender	Age Group	Number	Age Percent	Gender Percent	Average Annual Wage	Average Quarters Worked	Average Annual Employers
Women	00-19	140	10.8	0.0	\$3,248	2.7	1.6
Women	20-24	120	9.3	0.0	\$9,776	2.9	1.6
Women	25-34	201	15.6	0.0	\$17,515	3.2	1.5
Women	35-44	215	16.6	0.0	\$23,341	3.5	1.5
Women	45-54	333	25.8	0.0	\$26,808	3.6	1.3
Women	55-64	207	16.0	0.0	\$25,747	3.6	1.2
Women	65-Up	74	5.7	0.0	\$15,191	3.4	1.1
Women	N/A	2	0.2	0.0	\$36,552	3.0	1.0
Women	Total	1,292	100.0	45.9	\$19,830	3.3	1.4
Men	00-19	135	11.1	0.0	\$5,880	2.6	1.4
Men	20-24	136	11.2	0.0	\$23,432	3.0	1.5
Men	25-34	235	19.3	0.0	\$32,342	3.4	1.3
Men	35-44	203	16.7	0.0	\$38,377	3.5	1.2
Men	45-54	245	20.2	0.0	\$45,382	3.5	1.2
Men	55-64	178	14.7	0.0	\$38,441	3.5	1.2
Men	65-Up	83	6.8	0.0	\$29,312	3.2	1.0
Men	Total	1,215	100.0	43.2	\$32,729	3.3	1.3
N/A	N/A	308	100.0	0.0	\$10,821	2.0	1.1
N/A	Total	308	100.0	10.9	\$10,821	2.0	1.1
Total	00-19	275	9.8	0.0	\$4,540	2.7	1.5
Total	20-24	256	9.1	0.0	\$17,031	2.9	1.5
Total	25-34	436	15.5	0.0	\$25,507	3.3	1.4
Total	35-44	418	14.8	0.0	\$30,643	3.5	1.4
Total	45-54	578	20.5	0.0	\$34,681	3.6	1.3
Total	55-64	385	13.7	0.0	\$31,616	3.5	1.2
Total	65-Up	157	5.6	0.0	\$22,657	3.3	1.1
Total	N/A	310	11.0	0.0	\$10,987	2.0	1.1
Total	Total	2,815	100.0	100.0	\$24,412	3.2	1.3

Note: Persons worked at any time during the year.

County Determination: Based on county of employment in which the person made the most money in the year.

N/A: Represents persons with demographic data that is unavailable.

N/A = Nonresidents, individuals for whom demographic data are not available.

Source: Demographics of Persons Working in Wyoming by County, Industry, Age, & Gender, 2000-2017.  
Research & Planning, Wyoming Department of Workforce Services.

Prepared by M. Moore, Research & Planning, WY DWS, 6/12/18.

### Average Earnings by Age and Gender with Place of Work in Crook County in 2009

Gender	Age Group	Number	Age Percent	Gender Percent	Average Annual Wage	Average Quarters Worked	Average Annual Employers
Women	00-19	149	11.3	0.0	\$3,463	2.6	1.4
Women	20-24	121	9.2	0.0	\$9,071	2.8	1.5
Women	25-34	198	15.0	0.0	\$18,733	3.2	1.4
Women	35-44	225	17.0	0.0	\$24,127	3.4	1.3
Women	45-54	325	24.6	0.0	\$25,724	3.6	1.3
Women	55-64	219	16.6	0.0	\$27,139	3.6	1.2
Women	65-Up	82	6.2	0.0	\$16,401	3.4	1.1
Women	N/A	2	0.2	0.0	\$47,392	4.0	1.0
Women	Total	1,321	100.0	46.2	\$20,056	3.3	1.3
Men	00-19	142	11.3	0.0	\$4,678	2.4	1.4
Men	20-24	156	12.4	0.0	\$18,826	2.9	1.4
Men	25-34	253	20.1	0.0	\$30,311	3.2	1.3
Men	35-44	195	15.5	0.0	\$36,797	3.5	1.1
Men	45-54	247	19.6	0.0	\$44,564	3.4	1.1
Men	55-64	187	14.8	0.0	\$37,946	3.5	1.1
Men	65-Up	80	6.3	0.0	\$28,005	3.4	1.1
Men	Total	1,260	100.0	44.1	\$30,785	3.2	1.2
N/A	N/A	279	100.0	0.0	\$12,315	2.1	1.0
N/A	Total	279	100.0	9.8	\$12,315	2.1	1.0
Total	00-19	291	10.2	0.0	\$4,056	2.5	1.4
Total	20-24	277	9.7	0.0	\$14,565	2.9	1.5
Total	25-34	451	15.8	0.0	\$25,228	3.2	1.3
Total	35-44	420	14.7	0.0	\$30,009	3.4	1.3
Total	45-54	572	20.0	0.0	\$33,859	3.5	1.3
Total	55-64	406	14.2	0.0	\$32,117	3.6	1.2
Total	65-Up	162	5.7	0.0	\$22,132	3.4	1.1
Total	N/A	281	9.8	0.0	\$12,564	2.1	1.0
Total	Total	2,860	100.0	100.0	\$24,028	3.1	1.3

Note: Persons worked at any time during the year.

County Determination: Based on county of employment in which the person made the most money in the year.

N/A: Represents persons with demographic data that is unavailable.

N/A = Nonresidents, individuals for whom demographic data are not available.

Source: Demographics of Persons Working in Wyoming by County, Industry, Age, & Gender, 2000-2017.  
Research & Planning, Wyoming Department of Workforce Services.

Prepared by M. Moore, Research & Planning, WY DWS, 6/12/18.

### Average Earnings by Age and Gender with Place of Work in Crook County in 2010

Gender	Age Group	Number	Age Percent	Gender Percent	Average Annual Wage	Average Quarters Worked	Average Annual Employers
Women	00-19	118	9.2	0.0	\$3,057	2.4	1.3
Women	20-24	135	10.5	0.0	\$8,022	2.8	1.5
Women	25-34	203	15.7	0.0	\$18,159	3.2	1.4
Women	35-44	215	16.7	0.0	\$25,463	3.6	1.3
Women	45-54	289	22.4	0.0	\$27,987	3.6	1.3
Women	55-64	249	19.3	0.0	\$26,060	3.5	1.2
Women	65-Up	78	6.1	0.0	\$18,891	3.5	1.1
Women	N/A	2	0.2	0.0	\$33,921	4.0	1.0
Women	Total	1,289	100.0	46.2	\$20,731	3.3	1.3
Men	00-19	144	11.3	0.0	\$4,336	2.4	1.3
Men	20-24	142	11.1	0.0	\$19,436	2.9	1.4
Men	25-34	275	21.5	0.0	\$31,191	3.2	1.3
Men	35-44	192	15.0	0.0	\$38,339	3.4	1.2
Men	45-54	245	19.2	0.0	\$45,279	3.5	1.2
Men	55-64	195	15.2	0.0	\$40,414	3.5	1.1
Men	65-Up	85	6.6	0.0	\$26,276	3.3	1.1
Men	N/A	1	0.1	0.0	\$360	2.0	1.0
Men	Total	1,279	100.0	45.9	\$31,690	3.2	1.2
N/A	N/A	221	100.0	0.0	\$15,004	2.3	1.0
N/A	Total	221	100.0	7.9	\$15,004	2.3	1.0
Total	00-19	262	9.4	0.0	\$3,760	2.4	1.3
Total	20-24	277	9.9	0.0	\$13,873	2.8	1.5
Total	25-34	478	17.1	0.0	\$25,656	3.2	1.4
Total	35-44	407	14.6	0.0	\$31,537	3.5	1.2
Total	45-54	534	19.1	0.0	\$35,921	3.6	1.2
Total	55-64	444	15.9	0.0	\$32,364	3.5	1.2
Total	65-Up	163	5.8	0.0	\$22,742	3.4	1.1
Total	N/A	224	8.0	0.0	\$15,108	2.3	1.0
Total	Total	2,789	100.0	100.0	\$25,303	3.2	1.3

Note: Persons worked at any time during the year.

County Determination: Based on county of employment in which the person made the most money in the year.

N/A: Represents persons with demographic data that is unavailable.

N/A = Nonresidents, individuals for whom demographic data are not available.

Source: Demographics of Persons Working in Wyoming by County, Industry, Age, & Gender, 2000-2017.  
Research & Planning, Wyoming Department of Workforce Services.

Prepared by M. Moore, Research & Planning, WY DWS, 6/12/18.

### Average Earnings by Age and Gender with Place of Work in Crook County in 2011

Gender	Age Group	Number	Age Percent	Gender Percent	Average Annual Wage	Average Quarters Worked	Average Annual Employers
Women	00-19	102	8.1	0.0	\$3,153	2.5	1.3
Women	20-24	114	9.0	0.0	\$10,479	2.9	1.4
Women	25-34	201	15.9	0.0	\$18,974	3.2	1.4
Women	35-44	211	16.7	0.0	\$24,702	3.6	1.4
Women	45-54	287	22.7	0.0	\$28,099	3.5	1.3
Women	55-64	264	20.9	0.0	\$25,218	3.6	1.2
Women	65-Up	83	6.6	0.0	\$19,695	3.5	1.1
Women	N/A	2	0.2	0.0	\$44,108	4.0	1.0
Women	Total	1,264	100.0	46.2	\$21,351	3.4	1.3
Men	00-19	116	9.4	0.0	\$4,616	2.5	1.3
Men	20-24	150	12.2	0.0	\$19,783	3.0	1.5
Men	25-34	256	20.8	0.0	\$35,205	3.3	1.3
Men	35-44	190	15.4	0.0	\$39,157	3.4	1.2
Men	45-54	235	19.1	0.0	\$46,127	3.5	1.1
Men	55-64	195	15.8	0.0	\$41,860	3.5	1.1
Men	65-Up	89	7.2	0.0	\$25,610	3.3	1.1
Men	Total	1,231	100.0	45.0	\$33,499	3.3	1.2
N/A	N/A	243	100.0	0.0	\$14,855	2.2	1.1
N/A	Total	243	100.0	8.9	\$14,855	2.2	1.1
Total	00-19	218	8.0	0.0	\$3,931	2.5	1.3
Total	20-24	264	9.6	0.0	\$15,765	2.9	1.5
Total	25-34	457	16.7	0.0	\$28,067	3.3	1.3
Total	35-44	401	14.6	0.0	\$31,551	3.5	1.3
Total	45-54	522	19.1	0.0	\$36,215	3.5	1.2
Total	55-64	459	16.8	0.0	\$32,288	3.6	1.2
Total	65-Up	172	6.3	0.0	\$22,756	3.4	1.1
Total	N/A	245	8.9	0.0	\$15,094	2.2	1.1
Total	Total	2,738	100.0	100.0	\$26,236	3.2	1.3

Note: Persons worked at any time during the year.

County Determination: Based on county of employment in which the person made the most money in the year.

N/A: Represents persons with demographic data that is unavailable.

N/A = Nonresidents, individuals for whom demographic data are not available.

Source: Demographics of Persons Working in Wyoming by County, Industry, Age, & Gender, 2000-2017.

Research & Planning, Wyoming Department of Workforce Services.

Prepared by M. Moore, Research & Planning, WY DWS, 6/12/18.

### Average Earnings by Age and Gender with Place of Work in Crook County in 2012

Gender	Age Group	Number	Age Percent	Gender Percent	Average Annual Wage	Average Quarters Worked	Average Annual Employers
Women	00-19	98	7.9	0.0	\$3,571	2.5	1.3
Women	20-24	104	8.4	0.0	\$8,909	2.7	1.6
Women	25-34	225	18.1	0.0	\$20,873	3.4	1.4
Women	35-44	212	17.0	0.0	\$23,524	3.6	1.4
Women	45-54	276	22.2	0.0	\$29,889	3.5	1.3
Women	55-64	249	20.0	0.0	\$25,081	3.4	1.2
Women	65-Up	79	6.3	0.0	\$19,323	3.5	1.1
Women	N/A	2	0.2	0.0	\$55,748	4.0	1.0
Women	<b>Total</b>	<b>1,245</b>	<b>100.0</b>	<b>45.5</b>	<b>\$21,761</b>	<b>3.3</b>	<b>1.3</b>
Men	00-19	120	9.8	0.0	\$4,915	2.7	1.6
Men	20-24	157	12.8	0.0	\$20,361	3.0	1.6
Men	25-34	256	20.8	0.0	\$34,914	3.4	1.4
Men	35-44	192	15.6	0.0	\$41,271	3.4	1.2
Men	45-54	222	18.0	0.0	\$48,659	3.5	1.2
Men	55-64	184	15.0	0.0	\$42,844	3.5	1.1
Men	65-Up	99	8.0	0.0	\$26,530	3.3	1.1
Men	<b>Total</b>	<b>1,230</b>	<b>100.0</b>	<b>44.9</b>	<b>\$34,114</b>	<b>3.3</b>	<b>1.3</b>
N/A	N/A	262	100.0	0.0	\$16,191	2.3	1.0
N/A	<b>Total</b>	<b>262</b>	<b>100.0</b>	<b>9.6</b>	<b>\$16,191</b>	<b>2.3</b>	<b>1.0</b>
Total	00-19	218	8.0	0.0	\$4,311	2.6	1.5
Total	20-24	261	9.5	0.0	\$15,797	2.9	1.6
Total	25-34	481	17.6	0.0	\$28,346	3.4	1.4
Total	35-44	404	14.8	0.0	\$31,958	3.5	1.3
Total	45-54	498	18.2	0.0	\$38,256	3.5	1.2
Total	55-64	433	15.8	0.0	\$32,630	3.5	1.2
Total	65-Up	178	6.5	0.0	\$23,331	3.4	1.1
Total	N/A	264	9.6	0.0	\$16,491	2.3	1.0
<b>Total</b>	<b>Total</b>	<b>2,737</b>	<b>100.0</b>	<b>100.0</b>	<b>\$26,779</b>	<b>3.2</b>	<b>1.3</b>

Note: Persons worked at any time during the year.

County Determination: Based on county of employment in which the person made the most money in the year.

N/A: Represents persons with demographic data that is unavailable.

N/A = Nonresidents, individuals for whom demographic data are not available.

Source: Demographics of Persons Working in Wyoming by County, Industry, Age, & Gender, 2000-2017.  
Research & Planning, Wyoming Department of Workforce Services.

Prepared by M. Moore, Research & Planning, WY DWS, 6/12/18.



### Average Earnings by Age and Gender with Place of Work in Crook County in 2013

Gender	Age Group	Number	Age Percent	Gender Percent	Average Annual Wage	Average Quarters Worked	Average Annual Employers
Women	00-19	111	8.8	0.0	\$3,045	2.3	1.3
Women	20-24	91	7.2	0.0	\$10,844	2.9	1.8
Women	25-34	234	18.6	0.0	\$20,581	3.2	1.4
Women	35-44	207	16.5	0.0	\$23,582	3.4	1.4
Women	45-54	271	21.6	0.0	\$31,697	3.6	1.3
Women	55-64	255	20.3	0.0	\$26,307	3.6	1.3
Women	65-Up	85	6.8	0.0	\$18,362	3.2	1.1
Women	N/A	2	0.2	0.0	\$55,444	4.0	1.0
Women	Total	1,256	100.0	45.3	\$22,287	3.3	1.4
Men	00-19	117	9.5	0.0	\$4,840	2.4	1.4
Men	20-24	128	10.4	0.0	\$23,059	3.1	1.6
Men	25-34	266	21.5	0.0	\$36,176	3.3	1.3
Men	35-44	206	16.7	0.0	\$39,328	3.3	1.3
Men	45-54	218	17.6	0.0	\$50,960	3.5	1.2
Men	55-64	210	17.0	0.0	\$42,523	3.4	1.1
Men	65-Up	91	7.4	0.0	\$28,016	3.3	1.1
Men	Total	1,236	100.0	44.6	\$35,462	3.3	1.3
N/A	N/A	280	100.0	0.0	\$14,235	2.0	1.1
N/A	Total	280	100.0	10.1	\$14,235	2.0	1.1
Total	00-19	228	8.2	0.0	\$3,966	2.3	1.4
Total	20-24	219	7.9	0.0	\$17,983	3.0	1.7
Total	25-34	500	18.0	0.0	\$28,878	3.3	1.4
Total	35-44	413	14.9	0.0	\$31,436	3.4	1.3
Total	45-54	489	17.6	0.0	\$40,285	3.6	1.3
Total	55-64	465	16.8	0.0	\$33,630	3.5	1.2
Total	65-Up	176	6.3	0.0	\$23,354	3.3	1.1
Total	N/A	282	10.2	0.0	\$14,527	2.1	1.1
Total	Total	2,772	100.0	100.0	\$27,348	3.2	1.3

Note: Persons worked at any time during the year.

County Determination: Based on county of employment in which the person made the most money in the year.

N/A: Represents persons with demographic data that is unavailable.

N/A = Nonresidents, individuals for whom demographic data are not available.

Source: Demographics of Persons Working in Wyoming by County, Industry, Age, & Gender, 2000-2017.

Research & Planning, Wyoming Department of Workforce Services.

Prepared by M. Moore, Research & Planning, WY DWS, 6/12/18.

### Average Earnings by Age and Gender with Place of Work in Crook County in 2014

Gender	Age Group	Number	Age Percent	Gender Percent	Average Annual Wage	Average Quarters Worked	Average Annual Employers
Women	00-19	124	9.6	0.0	\$3,677	2.4	1.4
Women	20-24	90	7.0	0.0	\$11,166	3.0	1.7
Women	25-34	231	18.0	0.0	\$20,788	3.2	1.3
Women	35-44	206	16.0	0.0	\$23,338	3.3	1.3
Women	45-54	283	22.0	0.0	\$30,750	3.6	1.4
Women	55-64	250	19.5	0.0	\$27,066	3.5	1.2
Women	65-Up	99	7.7	0.0	\$13,820	3.2	1.2
Women	N/A	2	0.2	0.0	\$51,830	4.0	1.0
Women	Total	1,285	100.0	43.5	\$21,799	3.3	1.3
Men	00-19	130	10.0	0.0	\$4,132	2.3	1.5
Men	20-24	127	9.8	0.0	\$22,107	2.9	1.5
Men	25-34	278	21.4	0.0	\$37,892	3.2	1.4
Men	35-44	213	16.4	0.0	\$43,470	3.4	1.3
Men	45-54	235	18.1	0.0	\$49,954	3.5	1.2
Men	55-64	219	16.9	0.0	\$48,318	3.5	1.2
Men	65-Up	95	7.3	0.0	\$27,386	3.2	1.1
Men	Total	1,297	100.0	43.9	\$37,055	3.2	1.3
N/A	N/A	372	100.0	0.0	\$12,118	2.0	1.1
N/A	Total	372	100.0	12.6	\$12,118	2.0	1.1
Total	00-19	254	8.6	0.0	\$3,910	2.4	1.5
Total	20-24	217	7.3	0.0	\$17,569	2.9	1.6
Total	25-34	509	17.2	0.0	\$30,130	3.2	1.4
Total	35-44	419	14.2	0.0	\$33,572	3.3	1.3
Total	45-54	518	17.5	0.0	\$39,462	3.6	1.3
Total	55-64	469	15.9	0.0	\$36,990	3.5	1.2
Total	65-Up	194	6.6	0.0	\$20,463	3.2	1.1
Total	N/A	374	12.7	0.0	\$12,331	2.0	1.1
Total	Total	2,954	100.0	100.0	\$27,278	3.1	1.3

Note: Persons worked at any time during the year.

County Determination: Based on county of employment in which the person made the most money in the year.

N/A: Represents persons with demographic data that is unavailable.

N/A = Nonresidents, individuals for whom demographic data are not available.

Source: Demographics of Persons Working in Wyoming by County, Industry, Age, & Gender, 2000-2017.  
Research & Planning, Wyoming Department of Workforce Services.

Prepared by M. Moore, Research & Planning, WY DWS, 6/12/18.

### Average Earnings by Age and Gender with Place of Work in Crook County in 2015

Gender	Age Group	Number	Age Percent	Gender Percent	Average Annual Wage	Average Quarters Worked	Average Annual Employers
Women	00-19	113	9.1	0.0	\$3,585	2.6	1.5
Women	20-24	93	7.5	0.0	\$13,132	2.9	1.7
Women	25-34	210	17.0	0.0	\$22,112	3.3	1.3
Women	35-44	207	16.7	0.0	\$26,694	3.3	1.3
Women	45-54	267	21.6	0.0	\$35,777	3.7	1.3
Women	55-64	251	20.3	0.0	\$26,266	3.4	1.2
Women	65-Up	93	7.5	0.0	\$17,388	3.5	1.2
Women	N/A	2	0.2	0.0	\$33,157	3.5	1.0
Women	<b>Total</b>	<b>1,236</b>	<b>100.0</b>	<b>42.3</b>	<b>\$23,968</b>	<b>3.3</b>	<b>1.3</b>
Men	00-19	116	9.3	0.0	\$4,989	2.4	1.3
Men	20-24	120	9.6	0.0	\$22,109	3.1	1.5
Men	25-34	274	21.9	0.0	\$38,369	3.4	1.3
Men	35-44	194	15.5	0.0	\$43,673	3.4	1.2
Men	45-54	225	18.0	0.0	\$50,650	3.5	1.1
Men	55-64	226	18.0	0.0	\$48,388	3.4	1.1
Men	65-Up	98	7.8	0.0	\$27,705	3.1	1.1
Men	<b>Total</b>	<b>1,253</b>	<b>100.0</b>	<b>42.9</b>	<b>\$37,721</b>	<b>3.3</b>	<b>1.2</b>
N/A	N/A	430	100.0	0.0	\$11,906	2.1	1.0
N/A	<b>Total</b>	<b>430</b>	<b>100.0</b>	<b>14.7</b>	<b>\$11,906</b>	<b>2.1</b>	<b>1.0</b>
Total	00-19	229	7.8	0.0	\$4,297	2.5	1.4
Total	20-24	213	7.3	0.0	\$18,189	3.0	1.6
Total	25-34	484	16.6	0.0	\$31,315	3.3	1.3
Total	35-44	401	13.7	0.0	\$34,908	3.4	1.2
Total	45-54	492	16.9	0.0	\$42,579	3.6	1.2
Total	55-64	477	16.3	0.0	\$36,747	3.4	1.1
Total	65-Up	191	6.5	0.0	\$22,682	3.3	1.2
Total	N/A	432	14.8	0.0	\$12,004	2.1	1.0
<b>Total</b>	<b>Total</b>	<b>2,919</b>	<b>100.0</b>	<b>100.0</b>	<b>\$28,095</b>	<b>3.1</b>	<b>1.2</b>

Note: Persons worked at any time during the year.

County Determination: Based on county of employment in which the person made the most money in the year.

N/A: Represents persons with demographic data that is unavailable.

N/A = Nonresidents, individuals for whom demographic data are not available.

Source: Demographics of Persons Working in Wyoming by County, Industry, Age, & Gender, 2000-2017.  
Research & Planning, Wyoming Department of Workforce Services.

Prepared by M. Moore, Research & Planning, WY DWS, 6/12/18.

### Average Earnings by Age and Gender with Place of Work in Crook County in 2016

Gender	Age Group	Number	Age Percent	Gender Percent	Average Annual Wage	Average Quarters Worked	Average Annual Employers
Women	00-19	122	10.0	0.0	\$3,828	2.5	1.4
Women	20-24	91	7.4	0.0	\$13,589	3.1	1.5
Women	25-34	201	16.4	0.0	\$21,802	3.2	1.3
Women	35-44	213	17.4	0.0	\$26,603	3.5	1.3
Women	45-54	245	20.0	0.0	\$35,216	3.7	1.2
Women	55-64	254	20.8	0.0	\$29,233	3.5	1.2
Women	65-Up	95	7.8	0.0	\$15,360	3.3	1.1
Women	N/A	2	0.2	0.0	\$33,385	2.5	1.0
Women	<b>Total</b>	<b>1,223</b>	<b>100.0</b>	<b>43.4</b>	<b>\$23,983</b>	<b>3.3</b>	<b>1.3</b>
Men	00-19	114	8.8	0.0	\$5,024	2.5	1.4
Men	20-24	132	10.2	0.0	\$18,513	2.9	1.6
Men	25-34	277	21.3	0.0	\$36,370	3.3	1.3
Men	35-44	221	17.0	0.0	\$41,627	3.4	1.3
Men	45-54	202	15.6	0.0	\$55,691	3.6	1.2
Men	55-64	251	19.3	0.0	\$46,885	3.4	1.1
Men	65-Up	101	7.8	0.0	\$30,965	3.1	1.1
Men	<b>Total</b>	<b>1,298</b>	<b>100.0</b>	<b>46.1</b>	<b>\$37,316</b>	<b>3.2</b>	<b>1.3</b>
N/A	N/A	295	100.0	0.0	\$16,865	2.4	1.1
N/A	<b>Total</b>	<b>295</b>	<b>100.0</b>	<b>10.5</b>	<b>\$16,865</b>	<b>2.4</b>	<b>1.1</b>
Total	00-19	236	8.4	0.0	\$4,405	2.5	1.4
Total	20-24	223	7.9	0.0	\$16,503	3.0	1.6
Total	25-34	478	17.0	0.0	\$30,244	3.2	1.3
Total	35-44	434	15.4	0.0	\$34,254	3.4	1.3
Total	45-54	447	15.9	0.0	\$44,469	3.6	1.2
Total	55-64	505	17.9	0.0	\$38,006	3.5	1.1
Total	65-Up	196	7.0	0.0	\$23,401	3.2	1.1
Total	N/A	297	10.5	0.0	\$16,977	2.4	1.1
<b>Total</b>	<b>Total</b>	<b>2,816</b>	<b>100.0</b>	<b>100.0</b>	<b>\$29,383</b>	<b>3.2</b>	<b>1.2</b>

Note: Persons worked at any time during the year.

County Determination: Based on county of employment in which the person made the most money in the year.

N/A: Represents persons with demographic data that is unavailable.

N/A = Nonresidents, individuals for whom demographic data are not available.

Source: Demographics of Persons Working in Wyoming by County, Industry, Age, & Gender, 2000-2017.  
Research & Planning, Wyoming Department of Workforce Services.

Prepared by M. Moore, Research & Planning, WY DWS, 6/12/18.

### Average Earnings by Age and Gender with Place of Work in Crook County in 2017

Gender	Age Group	Number	Age Percent	Gender Percent	Average Annual Wage	Average Quarters Worked	Average Annual Employers
Women	00-19	110	9.0	0.0	\$4,940	2.7	1.6
Women	20-24	100	8.2	0.0	\$11,399	2.9	1.6
Women	25-34	198	16.3	0.0	\$24,290	3.3	1.3
Women	35-44	214	17.6	0.0	\$27,329	3.5	1.4
Women	45-54	238	19.5	0.0	\$32,527	3.6	1.3
Women	55-64	259	21.3	0.0	\$32,535	3.6	1.2
Women	65-Up	97	8.0	0.0	\$16,224	3.3	1.1
Women	N/A	2	0.2	0.0	\$34,896	3.0	1.0
Women	Total	1,218	100.0	43.3	\$24,756	3.4	1.3
Men	00-19	123	9.8	0.0	\$5,979	2.6	1.3
Men	20-24	107	8.5	0.0	\$22,410	3.0	1.5
Men	25-34	258	20.5	0.0	\$39,602	3.4	1.3
Men	35-44	229	18.2	0.0	\$44,342	3.3	1.3
Men	45-54	189	15.0	0.0	\$52,647	3.5	1.2
Men	55-64	251	19.9	0.0	\$49,179	3.4	1.2
Men	65-Up	103	8.2	0.0	\$33,537	3.2	1.1
Men	Total	1,260	100.0	44.8	\$39,090	3.3	1.3
N/A	N/A	335	100.0	0.0	\$17,667	2.3	1.1
N/A	Total	335	100.0	11.9	\$17,667	2.3	1.1
Total	00-19	233	8.3	0.0	\$5,489	2.6	1.5
Total	20-24	207	7.4	0.0	\$17,091	3.0	1.5
Total	25-34	456	16.2	0.0	\$32,953	3.3	1.3
Total	35-44	443	15.7	0.0	\$36,123	3.4	1.3
Total	45-54	427	15.2	0.0	\$41,433	3.6	1.3
Total	55-64	510	18.1	0.0	\$40,726	3.5	1.2
Total	65-Up	200	7.1	0.0	\$25,141	3.3	1.1
Total	N/A	337	12.0	0.0	\$17,769	2.3	1.1
Total	Total	2,813	100.0	100.0	\$30,332	3.2	1.3

Note: Persons worked at any time during the year.

County Determination: Based on county of employment in which the person made the most money in the year.

N/A: Represents persons with demographic data that is unavailable.

N/A = Nonresidents, individuals for whom demographic data are not available.

Source: Demographics of Persons Working in Wyoming by County, Industry, Age, & Gender, 2000-2017.  
Research & Planning, Wyoming Department of Workforce Services.

Prepared by M. Moore, Research & Planning, WY DWS, 6/12/18.