

# Converse County at a Glance, 2017

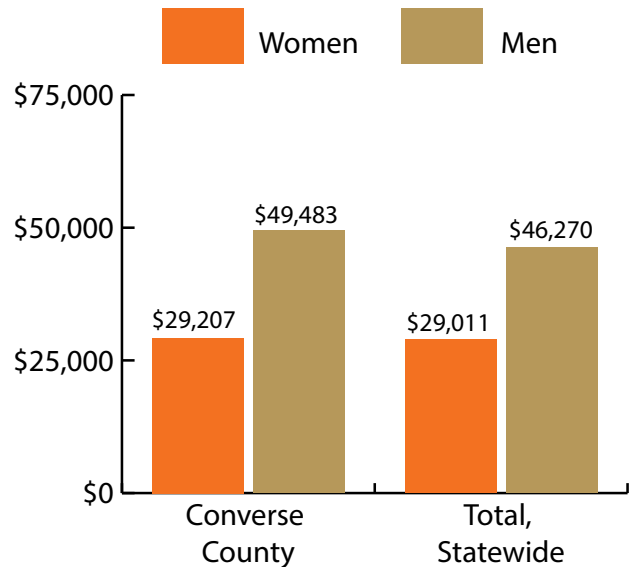
Demographics of Persons Working in Wyoming by County, Industry, Age, & Gender, 2000-2017

**Table: Total Number of Persons Working in Converse County, WY, at Any Time by Gender and Age, 2016-2017**

Gender	2016	2017	Change	
			N	%
Women	2,943	2,800	-143	-4.9
Men	3,478	3,252	-226	-6.5
Nonresidents	642	628	-14	-2.2
<b>Total</b>	<b>7,063</b>	<b>6,680</b>	<b>-383</b>	<b>-5.4</b>

Age	2016	2017	Change	
			N	%
00-19	457	447	-10	-2.2
20-24	562	512	-50	-8.9
25-34	1,423	1,306	-117	-8.2
35-44	1,233	1,202	-31	-2.5
45-54	1,236	1,144	-92	-7.4
55-64	1,077	1,041	-36	-3.3
65-Up	432	399	-33	-7.6
Nonresidents	643	629	-14	-2.2
<b>Total</b>	<b>7,063</b>	<b>6,680</b>	<b>-383</b>	<b>-5.4</b>



### Women's Wages as % of Men's Wages

Converse County: 59.0%

Total: 62.7%

Figure: Average Annual Wages by Gender, 2017

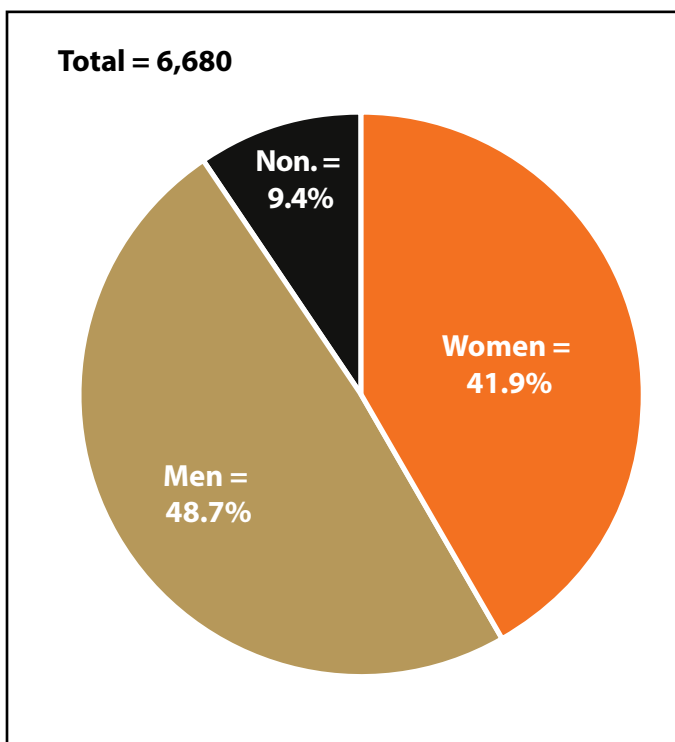


Figure: Persons Working by Gender, 2017

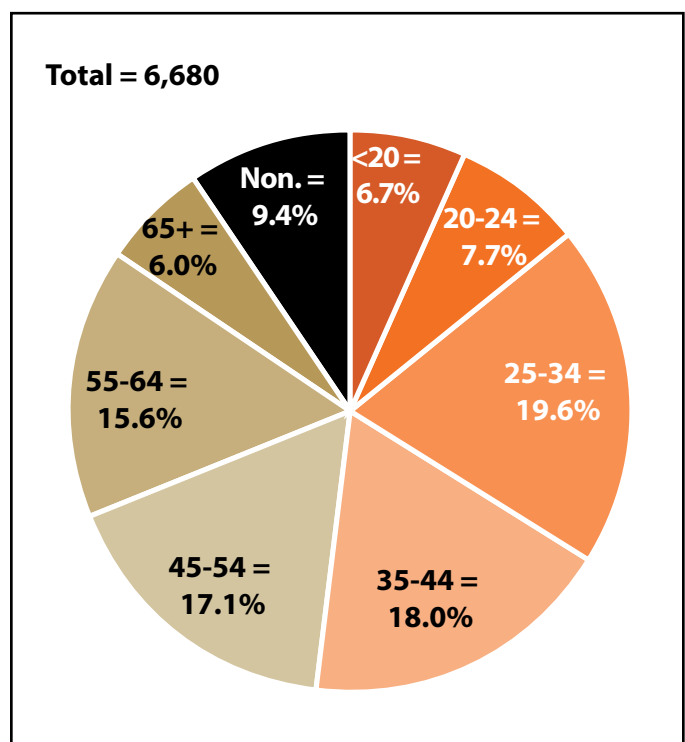


Figure: Persons Working by Age, 2017

Note: Nonresidents are individuals for whom demographic data are not available.

Source: Demographics of Persons Working in Wyoming by County, Industry, Age, & Gender, 2000-2017. Research & Planning, Wyoming Department of Workforce Services. Prepared by M. Moore, Research & Planning, WY DWS, 6/12/18.

# Persons Working in Converse County by Gender and Age, 2000-2017

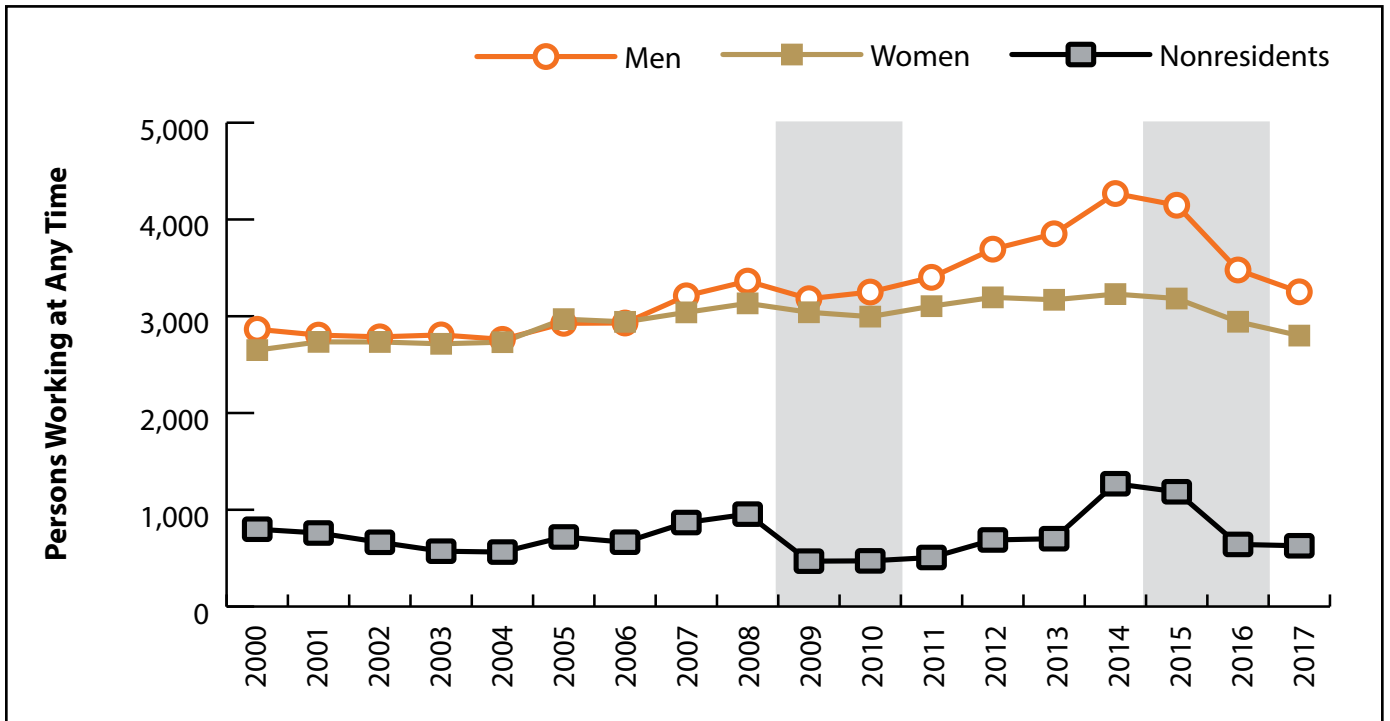


Figure: Persons Working in Converse County at Any Time by Gender, 2000-2017

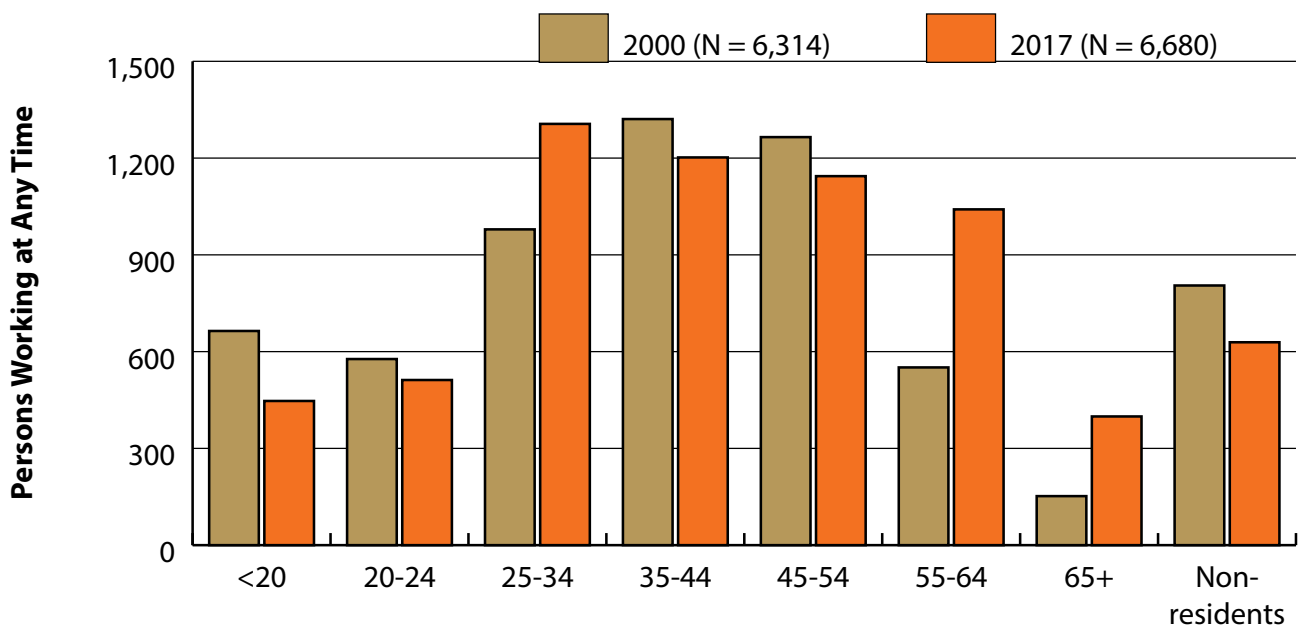


Figure: Persons Working in Converse County at Any Time by Age, 2000-2017

Note: Nonresidents are individuals for whom demographic data are not available.  
 Shaded areas indicate periods of economic downturn: 2009Q1-2010Q1 and 2015Q2-2016Q4.  
 Source: Demographics of Persons Working in Wyoming by County, Industry, Age, & Gender, 2000-2017. Research & Planning, Wyoming Department of Workforce Services. Prepared by M. Moore, Research & Planning, WY DWS, 6/12/18.

## Wages for Persons Working in Converse County by Gender, 2000-2017

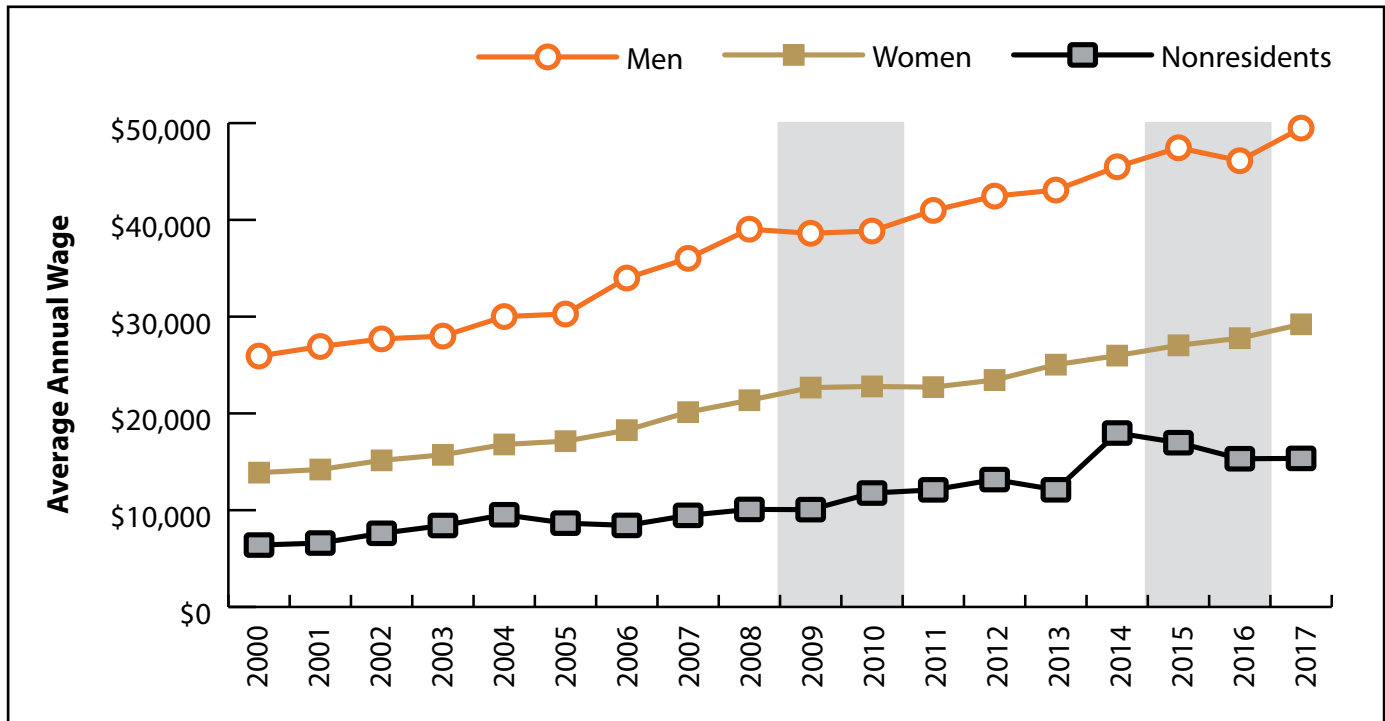


Figure: Average Annual Wage for Persons Working in Converse County at Any Time by Age, 2000-2017

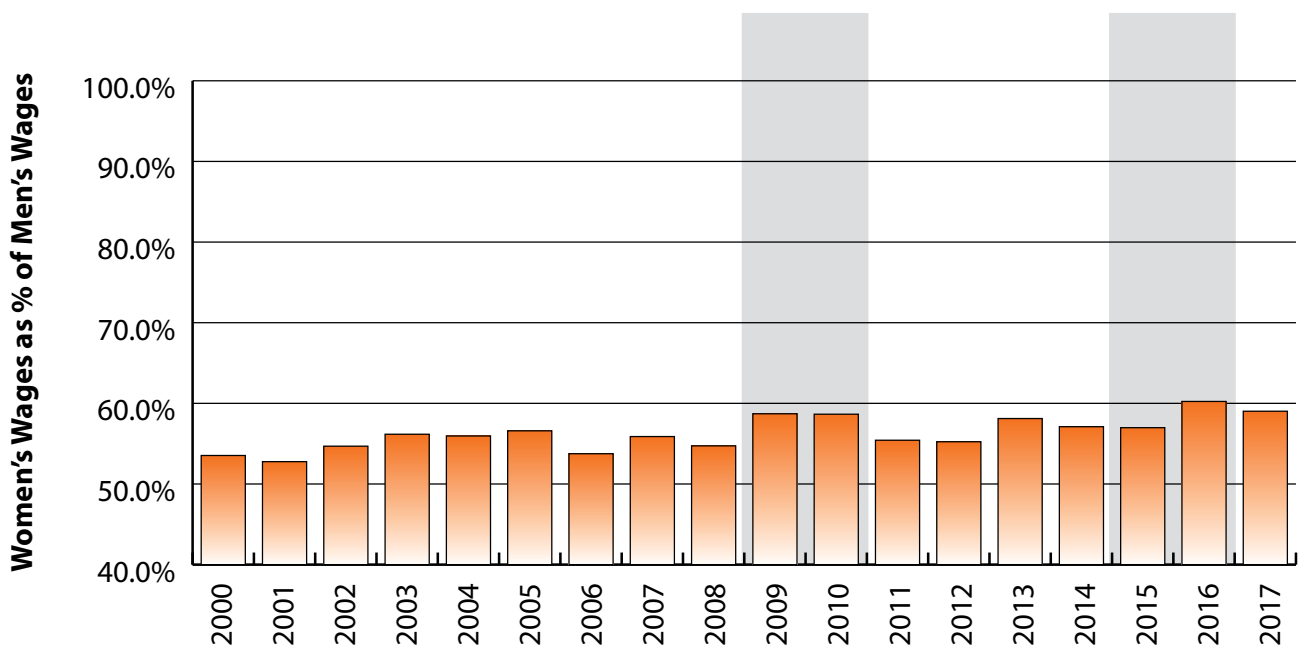


Figure: Women's Average Annual Wages as a Percent of Men's Wages for Persons Working in Converse County at Any Time by Age, 2000-2017

Note: Nonresidents are individuals for whom demographic data are not available.  
 Shaded areas indicate periods of economic downturn: 2009Q1-2010Q1 and 2015Q2-2016Q4.  
 Source: Demographics of Persons Working in Wyoming by County, Industry, Age, & Gender, 2000-2017. Research & Planning, Wyoming Department of Workforce Services. Prepared by M. Moore, Research & Planning, WY DWS, 6/12/18.

### Average Earnings by Age and Gender with Place of Work in Converse County in 2000

Gender	Age Group	Number	Age Percent	Gender Percent	Average Annual Wage	Average Quarters Worked	Average Annual Employers
Women	00-19	307	11.6	0.0	\$2,973	2.7	1.6
Women	20-24	256	9.7	0.0	\$6,724	2.9	1.9
Women	25-34	460	17.4	0.0	\$13,705	3.3	1.5
Women	35-44	687	25.9	0.0	\$16,512	3.5	1.5
Women	45-54	613	23.1	0.0	\$19,067	3.5	1.3
Women	55-64	259	9.8	0.0	\$16,153	3.5	1.3
Women	65-Up	67	2.5	0.0	\$9,309	3.3	1.1
Women	N/A	1	0.0	0.0	\$3,708	1.0	1.0
Women	Total	2,650	100.0	42.0	\$13,880	3.3	1.5
Men	00-19	357	12.5	0.0	\$3,458	2.5	1.6
Men	20-24	321	11.2	0.0	\$12,788	3.0	2.0
Men	25-34	519	18.1	0.0	\$22,790	3.3	1.6
Men	35-44	634	22.1	0.0	\$35,569	3.5	1.4
Men	45-54	652	22.8	0.0	\$37,500	3.5	1.3
Men	55-64	292	10.2	0.0	\$30,847	3.4	1.2
Men	65-Up	85	3.0	0.0	\$10,634	3.1	1.2
Men	N/A	5	0.2	0.0	\$40,003	2.4	1.0
Men	Total	2,865	100.0	45.4	\$25,927	3.3	1.5
N/A	N/A	799	100.0	0.0	\$6,396	1.6	1.2
N/A	Total	799	100.0	12.7	\$6,396	1.6	1.2
Total	00-19	664	10.5	0.0	\$3,234	2.6	1.6
Total	20-24	577	9.1	0.0	\$10,098	3.0	2.0
Total	25-34	979	15.5	0.0	\$18,522	3.3	1.6
Total	35-44	1,321	20.9	0.0	\$25,658	3.5	1.4
Total	45-54	1,265	20.0	0.0	\$28,567	3.5	1.3
Total	55-64	551	8.7	0.0	\$23,940	3.4	1.3
Total	65-Up	152	2.4	0.0	\$10,050	3.2	1.2
Total	N/A	805	12.7	0.0	\$6,601	1.6	1.2
Total	Total	6,314	100.0	100.0	\$18,399	3.1	1.4

Note: Persons worked at any time during the year.

County Determination: Based on county of employment in which the person made the most money in the year.

N/A: Represents persons with demographic data that is unavailable.

N/A = Nonresidents, individuals for whom demographic data are not available.

Source: Demographics of Persons Working in Wyoming by County, Industry, Age, & Gender, 2000-2017.

Research & Planning, Wyoming Department of Workforce Services.

Prepared by M. Moore, Research & Planning, WY DWS, 6/12/18.

### Average Earnings by Age and Gender with Place of Work in Converse County in 2001

Gender	Age Group	Number	Age Percent	Gender Percent	Average Annual Wage	Average Quarters Worked	Average Annual Employers
Women	00-19	358	13.1	0.0	\$2,989	2.6	1.6
Women	20-24	240	8.8	0.0	\$6,973	2.9	1.8
Women	25-34	449	16.4	0.0	\$13,703	3.2	1.6
Women	35-44	678	24.8	0.0	\$16,696	3.4	1.4
Women	45-54	662	24.2	0.0	\$20,366	3.5	1.3
Women	55-64	258	9.4	0.0	\$16,751	3.3	1.2
Women	65-Up	90	3.3	0.0	\$9,165	3.0	1.1
Women	Total	2,735	100.0	43.4	\$14,203	3.2	1.5
Men	00-19	379	13.5	0.0	\$3,367	2.5	1.6
Men	20-24	283	10.1	0.0	\$13,023	2.9	1.9
Men	25-34	505	18.0	0.0	\$25,532	3.2	1.5
Men	35-44	588	21.0	0.0	\$35,996	3.4	1.4
Men	45-54	655	23.4	0.0	\$39,662	3.5	1.3
Men	55-64	297	10.6	0.0	\$31,449	3.2	1.2
Men	65-Up	95	3.4	0.0	\$11,496	3.0	1.2
Men	N/A	3	0.1	0.0	\$20,379	2.0	1.0
Men	Total	2,805	100.0	44.5	\$26,914	3.2	1.5
N/A	N/A	760	100.0	0.0	\$6,603	1.4	1.1
N/A	Total	760	100.0	12.1	\$6,603	1.4	1.1
Total	00-19	737	11.7	0.0	\$3,183	2.5	1.6
Total	20-24	523	8.3	0.0	\$10,247	2.9	1.9
Total	25-34	954	15.1	0.0	\$19,965	3.2	1.6
Total	35-44	1,266	20.1	0.0	\$25,660	3.4	1.4
Total	45-54	1,317	20.9	0.0	\$29,963	3.5	1.3
Total	55-64	555	8.8	0.0	\$24,616	3.3	1.2
Total	65-Up	185	2.9	0.0	\$10,362	3.0	1.2
Total	N/A	763	12.1	0.0	\$6,657	1.4	1.1
Total	Total	6,300	100.0	100.0	\$18,945	3.0	1.4

Note: Persons worked at any time during the year.

County Determination: Based on county of employment in which the person made the most money in the year.

N/A: Represents persons with demographic data that is unavailable.

N/A = Nonresidents, individuals for whom demographic data are not available.

Source: Demographics of Persons Working in Wyoming by County, Industry, Age, & Gender, 2000-2017.

Research & Planning, Wyoming Department of Workforce Services.

Prepared by M. Moore, Research & Planning, WY DWS, 6/12/18.

### Average Earnings by Age and Gender with Place of Work in Converse County in 2002

Gender	Age Group	Number	Age Percent	Gender Percent	Average Annual Wage	Average Quarters Worked	Average Annual Employers
Women	00-19	340	12.4	0.0	\$3,028	2.7	1.7
Women	20-24	259	9.5	0.0	\$8,115	3.0	1.9
Women	25-34	456	16.7	0.0	\$14,732	3.3	1.6
Women	35-44	651	23.8	0.0	\$17,920	3.4	1.5
Women	45-54	664	24.3	0.0	\$20,613	3.6	1.3
Women	55-64	279	10.2	0.0	\$19,662	3.4	1.2
Women	65-Up	85	3.1	0.0	\$8,538	3.0	1.1
Women	Total	2,734	100.0	44.2	\$15,148	3.3	1.5
Men	00-19	379	13.6	0.0	\$3,863	2.5	1.7
Men	20-24	313	11.2	0.0	\$12,553	3.0	1.9
Men	25-34	499	17.9	0.0	\$25,862	3.3	1.6
Men	35-44	530	19.0	0.0	\$35,388	3.4	1.4
Men	45-54	623	22.4	0.0	\$42,261	3.5	1.3
Men	55-64	346	12.4	0.0	\$36,446	3.4	1.3
Men	65-Up	93	3.3	0.0	\$11,817	3.0	1.1
Men	N/A	4	0.1	0.0	\$25,772	2.5	1.3
Men	Total	2,787	100.0	45.1	\$27,698	3.2	1.5
N/A	N/A	664	100.0	0.0	\$7,611	1.6	1.1
N/A	Total	664	100.0	10.7	\$7,611	1.6	1.1
Total	00-19	719	11.6	0.0	\$3,468	2.6	1.7
Total	20-24	572	9.2	0.0	\$10,544	3.0	1.9
Total	25-34	955	15.4	0.0	\$20,548	3.3	1.6
Total	35-44	1,181	19.1	0.0	\$25,759	3.4	1.4
Total	45-54	1,287	20.8	0.0	\$31,092	3.5	1.3
Total	55-64	625	10.1	0.0	\$28,953	3.4	1.3
Total	65-Up	178	2.9	0.0	\$10,251	3.0	1.1
Total	N/A	668	10.8	0.0	\$7,719	1.6	1.1
Total	Total	6,185	100.0	100.0	\$19,994	3.1	1.4

Note: Persons worked at any time during the year.

County Determination: Based on county of employment in which the person made the most money in the year.

N/A: Represents persons with demographic data that is unavailable.

N/A = Nonresidents, individuals for whom demographic data are not available.

Source: Demographics of Persons Working in Wyoming by County, Industry, Age, & Gender, 2000-2017.  
Research & Planning, Wyoming Department of Workforce Services.

Prepared by M. Moore, Research & Planning, WY DWS, 6/12/18.

### Average Earnings by Age and Gender with Place of Work in Converse County in 2003

Gender	Age Group	Number	Age Percent	Gender Percent	Average Annual Wage	Average Quarters Worked	Average Annual Employers
Women	00-19	340	12.5	0.0	\$2,872	2.6	1.5
Women	20-24	270	9.9	0.0	\$8,193	2.9	1.7
Women	25-34	455	16.8	0.0	\$14,118	3.1	1.5
Women	35-44	596	22.0	0.0	\$20,121	3.5	1.4
Women	45-54	670	24.7	0.0	\$21,158	3.5	1.3
Women	55-64	298	11.0	0.0	\$20,205	3.5	1.2
Women	65-Up	85	3.1	0.0	\$10,373	3.2	1.1
Women	N/A	1	0.0	0.0	\$196	1.0	1.0
Women	Total	2,715	100.0	44.6	\$15,721	3.3	1.4
Men	00-19	359	12.8	0.0	\$3,411	2.4	1.6
Men	20-24	316	11.3	0.0	\$13,734	3.0	1.9
Men	25-34	499	17.8	0.0	\$25,808	3.3	1.5
Men	35-44	541	19.3	0.0	\$34,686	3.4	1.4
Men	45-54	611	21.8	0.0	\$43,253	3.5	1.3
Men	55-64	363	12.9	0.0	\$36,693	3.5	1.2
Men	65-Up	116	4.1	0.0	\$13,533	2.9	1.2
Men	N/A	2	0.1	0.0	\$19,564	2.0	1.0
Men	Total	2,807	100.0	46.1	\$27,988	3.2	1.4
N/A	N/A	572	100.0	0.0	\$8,415	1.6	1.1
N/A	Total	572	100.0	9.4	\$8,415	1.6	1.1
Total	00-19	699	11.5	0.0	\$3,149	2.5	1.6
Total	20-24	586	9.6	0.0	\$11,181	3.0	1.8
Total	25-34	954	15.7	0.0	\$20,233	3.2	1.5
Total	35-44	1,137	18.7	0.0	\$27,051	3.5	1.4
Total	45-54	1,281	21.0	0.0	\$31,697	3.5	1.3
Total	55-64	661	10.8	0.0	\$29,260	3.5	1.2
Total	65-Up	201	3.3	0.0	\$12,197	3.0	1.1
Total	N/A	575	9.4	0.0	\$8,439	1.6	1.1
Total	Total	6,094	100.0	100.0	\$20,686	3.1	1.4

Note: Persons worked at any time during the year.

County Determination: Based on county of employment in which the person made the most money in the year.

N/A: Represents persons with demographic data that is unavailable.

N/A = Nonresidents, individuals for whom demographic data are not available.

Source: Demographics of Persons Working in Wyoming by County, Industry, Age, & Gender, 2000-2017.  
Research & Planning, Wyoming Department of Workforce Services.

Prepared by M. Moore, Research & Planning, WY DWS, 6/12/18.

### Average Earnings by Age and Gender with Place of Work in Converse County in 2004

Gender	Age Group	Number	Age Percent	Gender Percent	Average Annual Wage	Average Quarters Worked	Average Annual Employers
Women	00-19	301	11.0	0.0	\$3,263	2.8	1.7
Women	20-24	282	10.3	0.0	\$8,050	3.0	1.8
Women	25-34	431	15.8	0.0	\$15,224	3.2	1.6
Women	35-44	606	22.2	0.0	\$20,515	3.5	1.5
Women	45-54	667	24.4	0.0	\$22,915	3.6	1.3
Women	55-64	351	12.8	0.0	\$20,395	3.5	1.2
Women	65-Up	93	3.4	0.0	\$12,643	3.2	1.2
Women	N/A	1	0.0	0.0	\$10,409	1.0	1.0
Women	Total	2,732	100.0	45.1	\$16,792	3.3	1.5
Men	00-19	314	11.4	0.0	\$3,640	2.5	1.6
Men	20-24	305	11.0	0.0	\$13,771	3.1	1.9
Men	25-34	522	18.9	0.0	\$28,615	3.3	1.5
Men	35-44	511	18.5	0.0	\$36,820	3.4	1.4
Men	45-54	635	23.0	0.0	\$44,662	3.5	1.3
Men	55-64	358	13.0	0.0	\$38,637	3.5	1.2
Men	65-Up	116	4.2	0.0	\$13,550	3.1	1.2
Men	Total	2,761	100.0	45.6	\$30,010	3.3	1.4
N/A	N/A	563	100.0	0.0	\$9,526	1.8	1.1
N/A	Total	563	100.0	9.3	\$9,526	1.8	1.1
Total	00-19	615	10.2	0.0	\$3,456	2.6	1.6
Total	20-24	587	9.7	0.0	\$11,023	3.0	1.9
Total	25-34	953	15.7	0.0	\$22,559	3.3	1.5
Total	35-44	1,117	18.4	0.0	\$27,974	3.5	1.4
Total	45-54	1,302	21.5	0.0	\$33,521	3.6	1.3
Total	55-64	709	11.7	0.0	\$29,606	3.5	1.2
Total	65-Up	209	3.5	0.0	\$13,147	3.1	1.2
Total	N/A	564	9.3	0.0	\$9,528	1.8	1.1
Total	Total	6,056	100.0	100.0	\$22,143	3.2	1.4

Note: Persons worked at any time during the year.

County Determination: Based on county of employment in which the person made the most money in the year.

N/A: Represents persons with demographic data that is unavailable.

N/A = Nonresidents, individuals for whom demographic data are not available.

Source: Demographics of Persons Working in Wyoming by County, Industry, Age, & Gender, 2000-2017.  
Research & Planning, Wyoming Department of Workforce Services.

Prepared by M. Moore, Research & Planning, WY DWS, 6/12/18.



### Average Earnings by Age and Gender with Place of Work in Converse County in 2005

Gender	Age Group	Number	Age Percent	Gender Percent	Average Annual Wage	Average Quarters Worked	Average Annual Employers
Women	00-19	350	11.8	0.0	\$3,069	2.7	1.6
Women	20-24	307	10.3	0.0	\$7,750	2.9	1.9
Women	25-34	491	16.5	0.0	\$15,376	3.3	1.7
Women	35-44	618	20.8	0.0	\$21,304	3.5	1.5
Women	45-54	698	23.5	0.0	\$24,376	3.7	1.4
Women	55-64	409	13.8	0.0	\$20,827	3.5	1.3
Women	65-Up	97	3.3	0.0	\$12,135	3.2	1.2
Women	Total	2,970	100.0	44.9	\$17,131	3.3	1.5
Men	00-19	328	11.2	0.0	\$4,317	2.6	1.8
Men	20-24	345	11.8	0.0	\$13,768	2.9	1.8
Men	25-34	551	18.8	0.0	\$28,229	3.3	1.6
Men	35-44	541	18.5	0.0	\$37,164	3.4	1.4
Men	45-54	654	22.3	0.0	\$45,171	3.5	1.3
Men	55-64	375	12.8	0.0	\$41,056	3.5	1.3
Men	65-Up	132	4.5	0.0	\$13,620	3.1	1.2
Men	N/A	1	0.0	0.0	\$40,100	3.0	1.0
Men	Total	2,927	100.0	44.2	\$30,270	3.2	1.5
N/A	N/A	719	100.0	0.0	\$8,660	1.8	1.2
N/A	Total	719	100.0	10.9	\$8,660	1.8	1.2
Total	00-19	678	10.2	0.0	\$3,673	2.6	1.7
Total	20-24	652	9.9	0.0	\$10,935	2.9	1.9
Total	25-34	1,042	15.7	0.0	\$22,172	3.3	1.6
Total	35-44	1,159	17.5	0.0	\$28,707	3.5	1.5
Total	45-54	1,352	20.4	0.0	\$34,435	3.6	1.3
Total	55-64	784	11.9	0.0	\$30,503	3.5	1.3
Total	65-Up	229	3.5	0.0	\$12,991	3.1	1.2
Total	N/A	720	10.9	0.0	\$8,704	1.8	1.2
Total	Total	6,616	100.0	100.0	\$22,023	3.1	1.5

Note: Persons worked at any time during the year.

County Determination: Based on county of employment in which the person made the most money in the year.

N/A: Represents persons with demographic data that is unavailable.

N/A = Nonresidents, individuals for whom demographic data are not available.

Source: Demographics of Persons Working in Wyoming by County, Industry, Age, & Gender, 2000-2017.  
Research & Planning, Wyoming Department of Workforce Services.

Prepared by M. Moore, Research & Planning, WY DWS, 6/12/18.

### Average Earnings by Age and Gender with Place of Work in Converse County in 2006

Gender	Age Group	Number	Age Percent	Gender Percent	Average Annual Wage	Average Quarters Worked	Average Annual Employers
Women	00-19	367	12.5	0.0	\$3,207	2.7	1.6
Women	20-24	266	9.0	0.0	\$9,846	3.0	1.9
Women	25-34	485	16.5	0.0	\$16,935	3.3	1.7
Women	35-44	572	19.4	0.0	\$23,457	3.5	1.5
Women	45-54	723	24.6	0.0	\$24,753	3.6	1.4
Women	55-64	417	14.2	0.0	\$21,488	3.5	1.2
Women	65-Up	112	3.8	0.0	\$13,129	3.3	1.3
Women	Total	2,942	100.0	45.0	\$18,271	3.3	1.5
Men	00-19	344	11.7	0.0	\$5,095	2.6	1.7
Men	20-24	342	11.7	0.0	\$16,192	2.9	1.8
Men	25-34	531	18.1	0.0	\$34,192	3.3	1.6
Men	35-44	550	18.8	0.0	\$42,198	3.4	1.3
Men	45-54	631	21.5	0.0	\$49,682	3.5	1.3
Men	55-64	395	13.5	0.0	\$44,042	3.5	1.2
Men	65-Up	135	4.6	0.0	\$16,167	3.1	1.1
Men	N/A	2	0.1	0.0	\$2,481	1.5	1.0
Men	Total	2,930	100.0	44.8	\$33,989	3.3	1.4
N/A	N/A	665	100.0	0.0	\$8,426	1.8	1.2
N/A	Total	665	100.0	10.2	\$8,426	1.8	1.2
Total	00-19	711	10.9	0.0	\$4,121	2.6	1.7
Total	20-24	608	9.3	0.0	\$13,415	2.9	1.9
Total	25-34	1,016	15.5	0.0	\$25,954	3.3	1.6
Total	35-44	1,122	17.2	0.0	\$32,644	3.5	1.4
Total	45-54	1,354	20.7	0.0	\$36,370	3.6	1.3
Total	55-64	812	12.4	0.0	\$32,459	3.5	1.2
Total	65-Up	247	3.8	0.0	\$14,789	3.2	1.2
Total	N/A	667	10.2	0.0	\$8,408	1.8	1.2
Total	Total	6,537	100.0	100.0	\$24,315	3.1	1.4

Note: Persons worked at any time during the year.

County Determination: Based on county of employment in which the person made the most money in the year.

N/A: Represents persons with demographic data that is unavailable.

N/A = Nonresidents, individuals for whom demographic data are not available.

Source: Demographics of Persons Working in Wyoming by County, Industry, Age, & Gender, 2000-2017.  
Research & Planning, Wyoming Department of Workforce Services.

Prepared by M. Moore, Research & Planning, WY DWS, 6/12/18.

### Average Earnings by Age and Gender with Place of Work in Converse County in 2007

Gender	Age Group	Number	Age Percent	Gender Percent	Average Annual Wage	Average Quarters Worked	Average Annual Employers
Women	00-19	359	11.8	0.0	\$3,676	2.8	1.8
Women	20-24	294	9.7	0.0	\$10,524	3.0	1.9
Women	25-34	530	17.4	0.0	\$18,819	3.2	1.6
Women	35-44	598	19.7	0.0	\$26,168	3.4	1.5
Women	45-54	728	23.9	0.0	\$26,180	3.6	1.4
Women	55-64	401	13.2	0.0	\$25,870	3.6	1.2
Women	65-Up	130	4.3	0.0	\$13,294	3.3	1.2
Women	Total	3,040	100.0	42.7	\$20,131	3.3	1.5
Men	00-19	376	11.7	0.0	\$4,931	2.6	1.7
Men	20-24	363	11.3	0.0	\$19,496	2.9	1.7
Men	25-34	627	19.5	0.0	\$34,340	3.2	1.5
Men	35-44	625	19.5	0.0	\$43,803	3.4	1.4
Men	45-54	654	20.4	0.0	\$53,797	3.5	1.3
Men	55-64	420	13.1	0.0	\$47,001	3.5	1.2
Men	65-Up	145	4.5	0.0	\$19,908	3.1	1.2
Men	N/A	1	0.0	0.0	\$24,425	3.0	2.0
Men	Total	3,211	100.0	45.1	\$36,024	3.2	1.4
N/A	N/A	868	100.0	0.0	\$9,465	1.8	1.2
N/A	Total	868	100.0	12.2	\$9,465	1.8	1.2
Total	00-19	735	10.3	0.0	\$4,318	2.7	1.7
Total	20-24	657	9.2	0.0	\$15,481	2.9	1.8
Total	25-34	1,157	16.3	0.0	\$27,230	3.2	1.5
Total	35-44	1,223	17.2	0.0	\$35,180	3.4	1.4
Total	45-54	1,382	19.4	0.0	\$39,249	3.5	1.3
Total	55-64	821	11.5	0.0	\$36,680	3.6	1.2
Total	65-Up	275	3.9	0.0	\$16,781	3.2	1.2
Total	N/A	869	12.2	0.0	\$9,482	1.8	1.2
Total	Total	7,119	100.0	100.0	\$25,999	3.1	1.4

Note: Persons worked at any time during the year.

County Determination: Based on county of employment in which the person made the most money in the year.

N/A: Represents persons with demographic data that is unavailable.

N/A = Nonresidents, individuals for whom demographic data are not available.

Source: Demographics of Persons Working in Wyoming by County, Industry, Age, & Gender, 2000-2017.  
Research & Planning, Wyoming Department of Workforce Services.

Prepared by M. Moore, Research & Planning, WY DWS, 6/12/18.

### Average Earnings by Age and Gender with Place of Work in Converse County in 2008

Gender	Age Group	Number	Age Percent	Gender Percent	Average Annual Wage	Average Quarters Worked	Average Annual Employers
Women	00-19	350	11.2	0.0	\$3,768	2.8	1.7
Women	20-24	336	10.7	0.0	\$11,170	2.9	1.7
Women	25-34	535	17.1	0.0	\$21,348	3.3	1.5
Women	35-44	610	19.5	0.0	\$27,625	3.5	1.4
Women	45-54	717	22.9	0.0	\$28,132	3.6	1.4
Women	55-64	435	13.9	0.0	\$26,355	3.6	1.3
Women	65-Up	150	4.8	0.0	\$13,013	3.3	1.2
Women	Total	3,133	100.0	42.0	\$21,363	3.3	1.5
Men	00-19	366	10.9	0.0	\$5,321	2.6	1.7
Men	20-24	361	10.7	0.0	\$21,239	3.0	1.8
Men	25-34	685	20.4	0.0	\$38,594	3.3	1.4
Men	35-44	640	19.0	0.0	\$47,276	3.4	1.4
Men	45-54	703	20.9	0.0	\$56,062	3.5	1.3
Men	55-64	445	13.2	0.0	\$49,524	3.5	1.2
Men	65-Up	161	4.8	0.0	\$21,759	3.2	1.2
Men	N/A	2	0.1	0.0	\$7,968	1.5	1.0
Men	Total	3,363	100.0	45.1	\$39,036	3.3	1.4
N/A	N/A	955	100.0	0.0	\$10,078	1.7	1.1
N/A	Total	955	100.0	12.8	\$10,078	1.7	1.1
Total	00-19	716	9.6	0.0	\$4,562	2.7	1.7
Total	20-24	697	9.4	0.0	\$16,385	3.0	1.7
Total	25-34	1,220	16.4	0.0	\$31,031	3.3	1.5
Total	35-44	1,250	16.8	0.0	\$37,686	3.4	1.4
Total	45-54	1,420	19.1	0.0	\$41,959	3.5	1.3
Total	55-64	880	11.8	0.0	\$38,071	3.6	1.3
Total	65-Up	311	4.2	0.0	\$17,541	3.2	1.2
Total	N/A	957	12.8	0.0	\$10,073	1.7	1.1
Total	Total	7,451	100.0	100.0	\$27,893	3.1	1.4

Note: Persons worked at any time during the year.

County Determination: Based on county of employment in which the person made the most money in the year.

N/A: Represents persons with demographic data that is unavailable.

N/A = Nonresidents, individuals for whom demographic data are not available.

Source: Demographics of Persons Working in Wyoming by County, Industry, Age, & Gender, 2000-2017.  
Research & Planning, Wyoming Department of Workforce Services.

Prepared by M. Moore, Research & Planning, WY DWS, 6/12/18.

### Average Earnings by Age and Gender with Place of Work in Converse County in 2009

Gender	Age Group	Number	Age Percent	Gender Percent	Average Annual Wage	Average Quarters Worked	Average Annual Employers
Women	00-19	310	10.2	0.0	\$3,492	2.7	1.7
Women	20-24	314	10.3	0.0	\$11,582	3.1	1.7
Women	25-34	529	17.4	0.0	\$22,626	3.4	1.4
Women	35-44	586	19.3	0.0	\$27,333	3.5	1.4
Women	45-54	698	23.0	0.0	\$30,366	3.6	1.3
Women	55-64	456	15.0	0.0	\$28,336	3.6	1.2
Women	65-Up	147	4.8	0.0	\$14,362	3.3	1.1
Women	N/A	1	0.0	0.0	\$3,279	1.0	1.0
Women	Total	3,041	100.0	45.4	\$22,669	3.4	1.4
Men	00-19	336	10.6	0.0	\$4,516	2.6	1.6
Men	20-24	327	10.3	0.0	\$19,086	3.0	1.6
Men	25-34	684	21.5	0.0	\$36,374	3.3	1.4
Men	35-44	581	18.3	0.0	\$46,582	3.4	1.3
Men	45-54	643	20.2	0.0	\$58,250	3.6	1.2
Men	55-64	440	13.8	0.0	\$49,038	3.6	1.2
Men	65-Up	170	5.3	0.0	\$24,089	3.1	1.1
Men	Total	3,181	100.0	47.5	\$38,613	3.3	1.3
N/A	N/A	469	100.0	0.0	\$10,056	1.9	1.1
N/A	Total	469	100.0	7.0	\$10,056	1.9	1.1
Total	00-19	646	9.7	0.0	\$4,024	2.7	1.6
Total	20-24	641	9.6	0.0	\$15,410	3.1	1.7
Total	25-34	1,213	18.1	0.0	\$30,378	3.3	1.4
Total	35-44	1,167	17.4	0.0	\$36,916	3.5	1.3
Total	45-54	1,341	20.0	0.0	\$43,736	3.6	1.3
Total	55-64	896	13.4	0.0	\$38,502	3.6	1.2
Total	65-Up	317	4.7	0.0	\$19,578	3.2	1.1
Total	N/A	470	7.0	0.0	\$10,042	1.9	1.1
Total	Total	6,691	100.0	100.0	\$29,365	3.2	1.4

Note: Persons worked at any time during the year.

County Determination: Based on county of employment in which the person made the most money in the year.

N/A: Represents persons with demographic data that is unavailable.

N/A = Nonresidents, individuals for whom demographic data are not available.

Source: Demographics of Persons Working in Wyoming by County, Industry, Age, & Gender, 2000-2017.  
Research & Planning, Wyoming Department of Workforce Services.

Prepared by M. Moore, Research & Planning, WY DWS, 6/12/18.

### Average Earnings by Age and Gender with Place of Work in Converse County in 2010

Gender	Age Group	Number	Age Percent	Gender Percent	Average Annual Wage	Average Quarters Worked	Average Annual Employers
Women	00-19	283	9.4	0.0	\$3,587	2.7	1.5
Women	20-24	323	10.8	0.0	\$9,942	3.0	1.8
Women	25-34	551	18.4	0.0	\$21,832	3.3	1.4
Women	35-44	577	19.3	0.0	\$27,945	3.5	1.4
Women	45-54	662	22.1	0.0	\$29,793	3.6	1.3
Women	55-64	461	15.4	0.0	\$29,763	3.6	1.2
Women	65-Up	139	4.6	0.0	\$17,570	3.5	1.2
Women	Total	2,996	100.0	44.6	\$22,786	3.4	1.4
Men	00-19	313	9.6	0.0	\$5,605	2.5	1.5
Men	20-24	379	11.7	0.0	\$21,017	3.1	1.7
Men	25-34	710	21.8	0.0	\$36,610	3.3	1.4
Men	35-44	575	17.7	0.0	\$46,472	3.4	1.3
Men	45-54	646	19.9	0.0	\$57,328	3.5	1.2
Men	55-64	477	14.7	0.0	\$48,724	3.5	1.2
Men	65-Up	150	4.6	0.0	\$23,648	3.2	1.1
Men	Total	3,250	100.0	48.4	\$38,848	3.3	1.3
N/A	N/A	472	100.0	0.0	\$11,771	1.7	1.1
N/A	Total	472	100.0	7.0	\$11,771	1.7	1.1
Total	00-19	596	8.9	0.0	\$4,647	2.6	1.5
Total	20-24	702	10.4	0.0	\$15,921	3.0	1.7
Total	25-34	1,261	18.8	0.0	\$30,152	3.3	1.4
Total	35-44	1,152	17.1	0.0	\$37,192	3.4	1.3
Total	45-54	1,308	19.5	0.0	\$43,392	3.5	1.3
Total	55-64	938	14.0	0.0	\$39,405	3.5	1.2
Total	65-Up	289	4.3	0.0	\$20,724	3.3	1.1
Total	N/A	472	7.0	0.0	\$11,771	1.7	1.1
Total	Total	6,718	100.0	100.0	\$29,782	3.2	1.3

Note: Persons worked at any time during the year.

County Determination: Based on county of employment in which the person made the most money in the year.

N/A: Represents persons with demographic data that is unavailable.

N/A = Nonresidents, individuals for whom demographic data are not available.

Source: Demographics of Persons Working in Wyoming by County, Industry, Age, & Gender, 2000-2017.

Research & Planning, Wyoming Department of Workforce Services.

Prepared by M. Moore, Research & Planning, WY DWS, 6/12/18.

### Average Earnings by Age and Gender with Place of Work in Converse County in 2011

Gender	Age Group	Number	Age Percent	Gender Percent	Average Annual Wage	Average Quarters Worked	Average Annual Employers
Women	00-19	313	10.1	0.0	\$3,982	2.7	1.7
Women	20-24	311	10.0	0.0	\$10,277	3.0	1.8
Women	25-34	567	18.3	0.0	\$22,151	3.3	1.5
Women	35-44	594	19.1	0.0	\$28,665	3.5	1.4
Women	45-54	666	21.5	0.0	\$28,124	3.5	1.3
Women	55-64	492	15.9	0.0	\$30,655	3.6	1.3
Women	65-Up	160	5.2	0.0	\$16,614	3.3	1.2
Women	N/A	1	0.0	0.0	\$957	1.0	1.0
Women	Total	3,104	100.0	44.3	\$22,713	3.3	1.4
Men	00-19	320	9.4	0.0	\$5,245	2.5	1.6
Men	20-24	399	11.7	0.0	\$24,579	3.1	1.7
Men	25-34	763	22.4	0.0	\$40,294	3.3	1.5
Men	35-44	614	18.0	0.0	\$52,025	3.5	1.3
Men	45-54	629	18.5	0.0	\$56,938	3.4	1.2
Men	55-64	517	15.2	0.0	\$50,279	3.5	1.2
Men	65-Up	160	4.7	0.0	\$21,419	3.1	1.1
Men	Total	3,402	100.0	48.5	\$40,978	3.3	1.4
N/A	N/A	507	100.0	0.0	\$12,101	1.9	1.1
N/A	Total	507	100.0	7.2	\$12,101	1.9	1.1
Total	00-19	633	9.0	0.0	\$4,620	2.6	1.6
Total	20-24	710	10.1	0.0	\$18,314	3.0	1.7
Total	25-34	1,330	19.0	0.0	\$32,559	3.3	1.5
Total	35-44	1,208	17.2	0.0	\$40,538	3.5	1.4
Total	45-54	1,295	18.5	0.0	\$42,120	3.5	1.3
Total	55-64	1,009	14.4	0.0	\$40,710	3.5	1.2
Total	65-Up	320	4.6	0.0	\$19,016	3.2	1.1
Total	N/A	508	7.2	0.0	\$12,080	1.9	1.1
Total	Total	7,013	100.0	100.0	\$30,806	3.2	1.4

Note: Persons worked at any time during the year.

County Determination: Based on county of employment in which the person made the most money in the year.

N/A: Represents persons with demographic data that is unavailable.

N/A = Nonresidents, individuals for whom demographic data are not available.

Source: Demographics of Persons Working in Wyoming by County, Industry, Age, & Gender, 2000-2017.

Research & Planning, Wyoming Department of Workforce Services.

Prepared by M. Moore, Research & Planning, WY DWS, 6/12/18.

### Average Earnings by Age and Gender with Place of Work in Converse County in 2012

Gender	Age Group	Number	Age Percent	Gender Percent	Average Annual Wage	Average Quarters Worked	Average Annual Employers
Women	00-19	315	9.9	0.0	\$4,029	2.8	1.8
Women	20-24	336	10.5	0.0	\$11,328	3.0	1.9
Women	25-34	593	18.6	0.0	\$22,554	3.3	1.5
Women	35-44	603	18.9	0.0	\$29,798	3.6	1.5
Women	45-54	667	20.9	0.0	\$30,283	3.6	1.4
Women	55-64	514	16.1	0.0	\$30,870	3.5	1.2
Women	65-Up	167	5.2	0.0	\$14,650	3.4	1.2
Women	Total	3,195	100.0	42.2	\$23,452	3.4	1.5
Men	00-19	340	9.2	0.0	\$6,585	2.6	1.7
Men	20-24	428	11.6	0.0	\$24,156	3.1	1.7
Men	25-34	833	22.6	0.0	\$43,203	3.3	1.5
Men	35-44	705	19.1	0.0	\$52,113	3.4	1.3
Men	45-54	671	18.2	0.0	\$55,463	3.5	1.3
Men	55-64	540	14.6	0.0	\$55,254	3.5	1.2
Men	65-Up	176	4.8	0.0	\$25,175	3.3	1.1
Men	Total	3,693	100.0	48.7	\$42,456	3.3	1.4
N/A	N/A	688	100.0	0.0	\$13,161	1.8	1.1
N/A	Total	688	100.0	9.1	\$13,161	1.8	1.1
Total	00-19	655	8.6	0.0	\$5,356	2.7	1.8
Total	20-24	764	10.1	0.0	\$18,514	3.1	1.8
Total	25-34	1,426	18.8	0.0	\$34,616	3.3	1.5
Total	35-44	1,308	17.3	0.0	\$41,826	3.5	1.4
Total	45-54	1,338	17.7	0.0	\$42,911	3.5	1.3
Total	55-64	1,054	13.9	0.0	\$43,363	3.5	1.2
Total	65-Up	343	4.5	0.0	\$20,051	3.3	1.1
Total	N/A	688	9.1	0.0	\$13,161	1.8	1.1
Total	Total	7,576	100.0	100.0	\$31,781	3.2	1.4

Note: Persons worked at any time during the year.

County Determination: Based on county of employment in which the person made the most money in the year.

N/A: Represents persons with demographic data that is unavailable.

N/A = Nonresidents, individuals for whom demographic data are not available.

Source: Demographics of Persons Working in Wyoming by County, Industry, Age, & Gender, 2000-2017.

Research & Planning, Wyoming Department of Workforce Services.

Prepared by M. Moore, Research & Planning, WY DWS, 6/12/18.



### Average Earnings by Age and Gender with Place of Work in Converse County in 2013

Gender	Age Group	Number	Age Percent	Gender Percent	Average Annual Wage	Average Quarters Worked	Average Annual Employers
Women	00-19	292	9.2	0.0	\$4,287	2.8	1.7
Women	20-24	328	10.3	0.0	\$12,222	3.0	1.8
Women	25-34	596	18.8	0.0	\$24,869	3.4	1.5
Women	35-44	599	18.9	0.0	\$29,812	3.5	1.4
Women	45-54	650	20.5	0.0	\$32,749	3.6	1.4
Women	55-64	525	16.6	0.0	\$32,669	3.6	1.2
Women	65-Up	180	5.7	0.0	\$16,607	3.3	1.2
Women	Total	3,170	100.0	41.0	\$25,037	3.4	1.5
Men	00-19	327	8.5	0.0	\$6,374	2.6	1.7
Men	20-24	442	11.5	0.0	\$25,199	3.1	1.7
Men	25-34	889	23.1	0.0	\$41,885	3.2	1.5
Men	35-44	728	18.9	0.0	\$52,325	3.4	1.3
Men	45-54	691	17.9	0.0	\$57,746	3.5	1.3
Men	55-64	566	14.7	0.0	\$55,807	3.5	1.2
Men	65-Up	209	5.4	0.0	\$28,253	3.1	1.1
Men	Total	3,852	100.0	49.9	\$43,080	3.3	1.4
N/A	N/A	701	100.0	0.0	\$12,105	1.8	1.1
N/A	Total	701	100.0	9.1	\$12,105	1.8	1.1
Total	00-19	619	8.0	0.0	\$5,390	2.7	1.7
Total	20-24	770	10.0	0.0	\$19,671	3.0	1.8
Total	25-34	1,485	19.2	0.0	\$35,056	3.3	1.5
Total	35-44	1,327	17.2	0.0	\$42,163	3.5	1.4
Total	45-54	1,341	17.4	0.0	\$45,630	3.5	1.3
Total	55-64	1,091	14.1	0.0	\$44,673	3.5	1.2
Total	65-Up	389	5.0	0.0	\$22,864	3.2	1.1
Total	N/A	701	9.1	0.0	\$12,105	1.8	1.1
Total	Total	7,723	100.0	100.0	\$32,863	3.2	1.4

Note: Persons worked at any time during the year.

County Determination: Based on county of employment in which the person made the most money in the year.

N/A: Represents persons with demographic data that is unavailable.

N/A = Nonresidents, individuals for whom demographic data are not available.

Source: Demographics of Persons Working in Wyoming by County, Industry, Age, & Gender, 2000-2017.  
Research & Planning, Wyoming Department of Workforce Services.

Prepared by M. Moore, Research & Planning, WY DWS, 6/12/18.

### Average Earnings by Age and Gender with Place of Work in Converse County in 2014

Gender	Age Group	Number	Age Percent	Gender Percent	Average Annual Wage	Average Quarters Worked	Average Annual Employers
Women	00-19	284	8.8	0.0	\$4,296	2.7	1.8
Women	20-24	343	10.6	0.0	\$12,686	3.0	1.8
Women	25-34	650	20.1	0.0	\$25,732	3.4	1.6
Women	35-44	590	18.3	0.0	\$31,647	3.5	1.5
Women	45-54	646	20.0	0.0	\$33,109	3.6	1.4
Women	55-64	518	16.0	0.0	\$33,814	3.6	1.2
Women	65-Up	198	6.1	0.0	\$20,209	3.2	1.2
Women	Total	3,229	100.0	36.8	\$25,975	3.4	1.5
Men	00-19	310	7.3	0.0	\$7,248	2.6	1.6
Men	20-24	493	11.6	0.0	\$26,576	3.0	1.7
Men	25-34	1,023	24.0	0.0	\$41,906	3.1	1.5
Men	35-44	819	19.2	0.0	\$53,305	3.3	1.4
Men	45-54	799	18.7	0.0	\$60,425	3.4	1.3
Men	55-64	608	14.2	0.0	\$58,417	3.5	1.2
Men	65-Up	216	5.1	0.0	\$39,185	3.2	1.1
Men	Total	4,268	100.0	48.7	\$45,487	3.2	1.4
N/A	N/A	1,269	100.0	0.0	\$17,975	1.8	1.1
N/A	Total	1,269	100.0	14.5	\$17,975	1.8	1.1
Total	00-19	594	6.8	0.0	\$5,837	2.6	1.7
Total	20-24	836	9.5	0.0	\$20,877	3.0	1.8
Total	25-34	1,673	19.1	0.0	\$35,622	3.2	1.5
Total	35-44	1,409	16.1	0.0	\$44,236	3.4	1.4
Total	45-54	1,445	16.5	0.0	\$48,213	3.5	1.3
Total	55-64	1,126	12.8	0.0	\$47,098	3.5	1.2
Total	65-Up	414	4.7	0.0	\$30,109	3.2	1.1
Total	N/A	1,269	14.5	0.0	\$17,975	1.8	1.1
Total	Total	8,766	100.0	100.0	\$34,317	3.1	1.4

Note: Persons worked at any time during the year.

County Determination: Based on county of employment in which the person made the most money in the year.

N/A: Represents persons with demographic data that is unavailable.

N/A = Nonresidents, individuals for whom demographic data are not available.

Source: Demographics of Persons Working in Wyoming by County, Industry, Age, & Gender, 2000-2017.

Research & Planning, Wyoming Department of Workforce Services.

Prepared by M. Moore, Research & Planning, WY DWS, 6/12/18.

### Average Earnings by Age and Gender with Place of Work in Converse County in 2015

Gender	Age Group	Number	Age Percent	Gender Percent	Average Annual Wage	Average Quarters Worked	Average Annual Employers
Women	00-19	273	8.6	0.0	\$4,445	2.8	1.7
Women	20-24	323	10.1	0.0	\$14,221	3.0	1.8
Women	25-34	661	20.8	0.0	\$26,370	3.3	1.5
Women	35-44	590	18.5	0.0	\$31,997	3.6	1.5
Women	45-54	602	18.9	0.0	\$35,174	3.7	1.3
Women	55-64	526	16.5	0.0	\$35,045	3.7	1.2
Women	65-Up	206	6.5	0.0	\$21,016	3.4	1.2
Women	N/A	2	0.1	0.0	\$2,428	2.5	1.0
Women	Total	3,183	100.0	37.4	\$27,037	3.4	1.5
Men	00-19	298	7.2	0.0	\$5,663	2.4	1.5
Men	20-24	440	10.6	0.0	\$24,848	3.0	1.7
Men	25-34	995	24.0	0.0	\$42,905	3.2	1.5
Men	35-44	763	18.4	0.0	\$56,678	3.4	1.4
Men	45-54	775	18.7	0.0	\$63,053	3.4	1.3
Men	55-64	653	15.7	0.0	\$62,318	3.5	1.2
Men	65-Up	223	5.4	0.0	\$38,810	3.3	1.1
Men	Total	4,147	100.0	48.7	\$47,449	3.2	1.4
N/A	N/A	1,186	100.0	0.0	\$16,973	1.8	1.1
N/A	Total	1,186	100.0	13.9	\$16,973	1.8	1.1
Total	00-19	571	6.7	0.0	\$5,081	2.6	1.6
Total	20-24	763	9.0	0.0	\$20,349	3.0	1.7
Total	25-34	1,656	19.4	0.0	\$36,305	3.3	1.5
Total	35-44	1,353	15.9	0.0	\$45,916	3.5	1.4
Total	45-54	1,377	16.2	0.0	\$50,865	3.5	1.3
Total	55-64	1,179	13.8	0.0	\$50,151	3.5	1.2
Total	65-Up	429	5.0	0.0	\$30,266	3.3	1.2
Total	N/A	1,188	14.0	0.0	\$16,949	1.8	1.1
Total	Total	8,516	100.0	100.0	\$35,575	3.1	1.4

Note: Persons worked at any time during the year.

County Determination: Based on county of employment in which the person made the most money in the year.

N/A: Represents persons with demographic data that is unavailable.

N/A = Nonresidents, individuals for whom demographic data are not available.

Source: Demographics of Persons Working in Wyoming by County, Industry, Age, & Gender, 2000-2017.  
Research & Planning, Wyoming Department of Workforce Services.

Prepared by M. Moore, Research & Planning, WY DWS, 6/12/18.

### Average Earnings by Age and Gender with Place of Work in Converse County in 2016

Gender	Age Group	Number	Age Percent	Gender Percent	Average Annual Wage	Average Quarters Worked	Average Annual Employers
Women	00-19	234	8.0	0.0	\$3,933	2.7	1.5
Women	20-24	248	8.4	0.0	\$13,034	3.1	1.6
Women	25-34	615	20.9	0.0	\$27,027	3.4	1.3
Women	35-44	560	19.0	0.0	\$32,439	3.6	1.4
Women	45-54	576	19.6	0.0	\$36,871	3.7	1.3
Women	55-64	511	17.4	0.0	\$34,292	3.6	1.2
Women	65-Up	198	6.7	0.0	\$20,402	3.4	1.1
Women	N/A	1	0.0	0.0	\$1,422	2.0	1.0
Women	<b>Total</b>	<b>2,943</b>	<b>100.0</b>	<b>41.7</b>	<b>\$27,775</b>	<b>3.5</b>	<b>1.3</b>
Men	00-19	223	6.4	0.0	\$4,969	2.6	1.4
Men	20-24	314	9.0	0.0	\$21,393	3.0	1.5
Men	25-34	808	23.2	0.0	\$39,983	3.3	1.4
Men	35-44	673	19.4	0.0	\$53,453	3.4	1.3
Men	45-54	660	19.0	0.0	\$62,292	3.5	1.2
Men	55-64	566	16.3	0.0	\$60,066	3.5	1.2
Men	65-Up	234	6.7	0.0	\$39,125	3.2	1.1
Men	<b>Total</b>	<b>3,478</b>	<b>100.0</b>	<b>49.2</b>	<b>\$46,110</b>	<b>3.3</b>	<b>1.3</b>
N/A	N/A	642	100.0	0.0	\$15,315	1.9	1.0
N/A	<b>Total</b>	<b>642</b>	<b>100.0</b>	<b>9.1</b>	<b>\$15,315</b>	<b>1.9</b>	<b>1.0</b>
Total	00-19	457	6.5	0.0	\$4,439	2.6	1.4
Total	20-24	562	8.0	0.0	\$17,705	3.0	1.5
Total	25-34	1,423	20.1	0.0	\$34,384	3.3	1.4
Total	35-44	1,233	17.5	0.0	\$43,909	3.5	1.4
Total	45-54	1,236	17.5	0.0	\$50,445	3.6	1.3
Total	55-64	1,077	15.2	0.0	\$47,837	3.5	1.2
Total	65-Up	432	6.1	0.0	\$30,544	3.3	1.1
Total	N/A	643	9.1	0.0	\$15,293	1.9	1.0
<b>Total</b>	<b>Total</b>	<b>7,063</b>	<b>100.0</b>	<b>100.0</b>	<b>\$35,671</b>	<b>3.2</b>	<b>1.3</b>

Note: Persons worked at any time during the year.

County Determination: Based on county of employment in which the person made the most money in the year.

N/A: Represents persons with demographic data that is unavailable.

N/A = Nonresidents, individuals for whom demographic data are not available.

Source: Demographics of Persons Working in Wyoming by County, Industry, Age, & Gender, 2000-2017.

Research & Planning, Wyoming Department of Workforce Services.

Prepared by M. Moore, Research & Planning, WY DWS, 6/12/18.

### Average Earnings by Age and Gender with Place of Work in Converse County in 2017

Gender	Age Group	Number	Age Percent	Gender Percent	Average Annual Wage	Average Quarters Worked	Average Annual Employers
Women	00-19	208	7.4	0.0	\$4,104	2.7	1.6
Women	20-24	234	8.4	0.0	\$14,360	3.2	1.7
Women	25-34	584	20.9	0.0	\$29,468	3.4	1.4
Women	35-44	539	19.3	0.0	\$33,085	3.6	1.4
Women	45-54	547	19.5	0.0	\$38,228	3.7	1.3
Women	55-64	499	17.8	0.0	\$35,395	3.7	1.2
Women	65-Up	188	6.7	0.0	\$21,009	3.3	1.1
Women	N/A	1	0.0	0.0	\$374	1.0	1.0
Women	<b>Total</b>	<b>2,800</b>	<b>100.0</b>	<b>41.9</b>	<b>\$29,207</b>	<b>3.5</b>	<b>1.4</b>
Men	00-19	239	7.3	0.0	\$6,308	2.6	1.5
Men	20-24	278	8.5	0.0	\$23,361	3.0	1.6
Men	25-34	722	22.2	0.0	\$44,071	3.3	1.5
Men	35-44	663	20.4	0.0	\$55,761	3.4	1.3
Men	45-54	597	18.4	0.0	\$67,207	3.6	1.2
Men	55-64	542	16.7	0.0	\$65,217	3.5	1.2
Men	65-Up	211	6.5	0.0	\$41,025	3.3	1.1
Men	<b>Total</b>	<b>3,252</b>	<b>100.0</b>	<b>48.7</b>	<b>\$49,483</b>	<b>3.4</b>	<b>1.3</b>
N/A	N/A	628	100.0	0.0	\$15,351	1.9	1.1
N/A	<b>Total</b>	<b>628</b>	<b>100.0</b>	<b>9.4</b>	<b>\$15,351</b>	<b>1.9</b>	<b>1.1</b>
Total	00-19	447	6.7	0.0	\$5,282	2.6	1.5
Total	20-24	512	7.7	0.0	\$19,247	3.1	1.7
Total	25-34	1,306	19.6	0.0	\$37,541	3.3	1.4
Total	35-44	1,202	18.0	0.0	\$45,593	3.5	1.4
Total	45-54	1,144	17.1	0.0	\$53,350	3.7	1.3
Total	55-64	1,041	15.6	0.0	\$50,922	3.6	1.2
Total	65-Up	399	6.0	0.0	\$31,594	3.3	1.1
Total	N/A	629	9.4	0.0	\$15,327	1.9	1.1
<b>Total</b>	<b>Total</b>	<b>6,680</b>	<b>100.0</b>	<b>100.0</b>	<b>\$37,775</b>	<b>3.3</b>	<b>1.3</b>

Note: Persons worked at any time during the year.

County Determination: Based on county of employment in which the person made the most money in the year.

N/A: Represents persons with demographic data that is unavailable.

N/A = Nonresidents, individuals for whom demographic data are not available.

Source: Demographics of Persons Working in Wyoming by County, Industry, Age, & Gender, 2000-2017.  
Research & Planning, Wyoming Department of Workforce Services.

Prepared by M. Moore, Research & Planning, WY DWS, 6/12/18.