

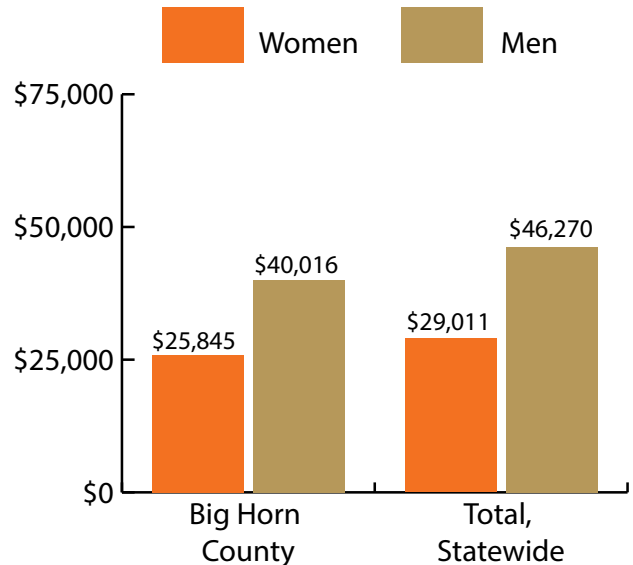
Big Horn County at a Glance, 2017

Demographics of Persons Working in Wyoming by County, Industry, Age, & Gender, 2000-2017

Table: Total Number of Persons Working in Big Horn County, WY, at Any Time by Gender and Age, 2016-2017

| Gender | 2016 | 2017 | Change | |
|--------------|--------------|--------------|------------|-------------|
| | | | N | % |
| Women | 2,156 | 2,101 | -55 | -2.6 |
| Men | 2,619 | 2,598 | -21 | -0.8 |
| Nonresidents | 420 | 485 | 65 | 15.5 |
| Total | 5,195 | 5,184 | -11 | -0.2 |

| Age | 2016 | 2017 | Change | |
|--------------|--------------|--------------|------------|-------------|
| | | | N | % |
| 00-19 | 337 | 334 | -3 | -0.9 |
| 20-24 | 384 | 411 | 27 | 7.0 |
| 25-34 | 976 | 882 | -94 | -9.6 |
| 35-44 | 889 | 908 | 19 | 2.1 |
| 45-54 | 901 | 894 | -7 | -0.8 |
| 55-64 | 877 | 871 | -6 | -0.7 |
| 65-Up | 409 | 398 | -11 | -2.7 |
| Nonresidents | 422 | 486 | 64 | 15.2 |
| Total | 5,195 | 5,184 | -11 | -0.2 |



Women's Wages as % of Men's Wages

Big Horn County: 64.6%

Total: 62.7%

Figure: Average Annual Wages by Gender, 2017

Total = 5,184

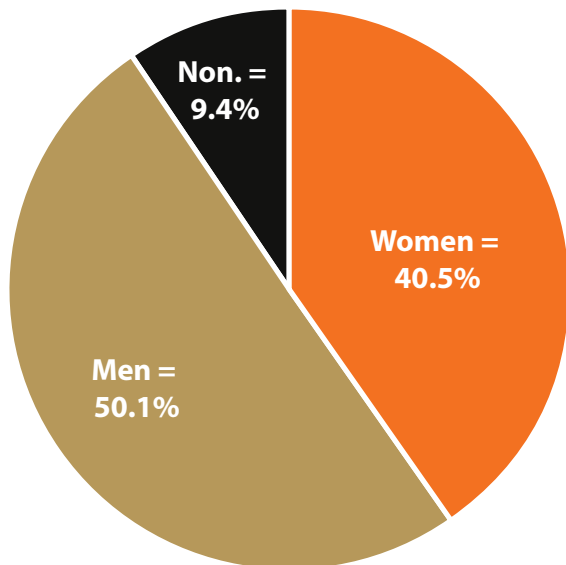


Figure: Persons Working by Gender, 2017

Total = 5,184

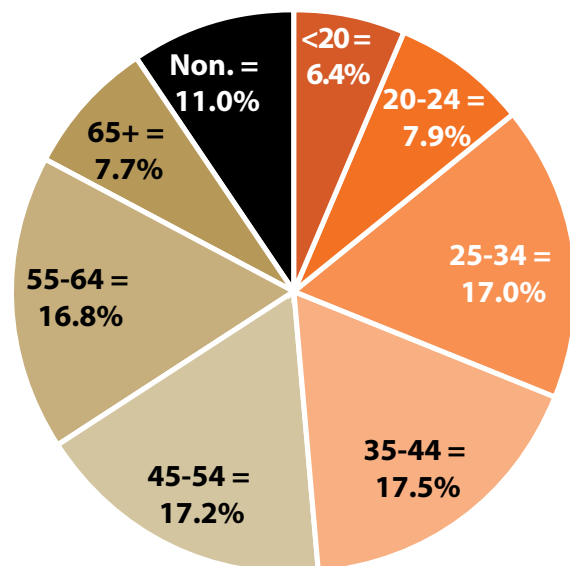


Figure: Persons Working by Age, 2017

Note: Nonresidents are individuals for whom demographic data are not available.

Source: Demographics of Persons Working in Wyoming by County, Industry, Age, & Gender, 2000-2017. Research & Planning, Wyoming Department of Workforce Services. Prepared by M. Moore, Research & Planning, WY DWS, 6/12/18.

Persons Working in Big Horn County by Gender and Age, 2000-2017

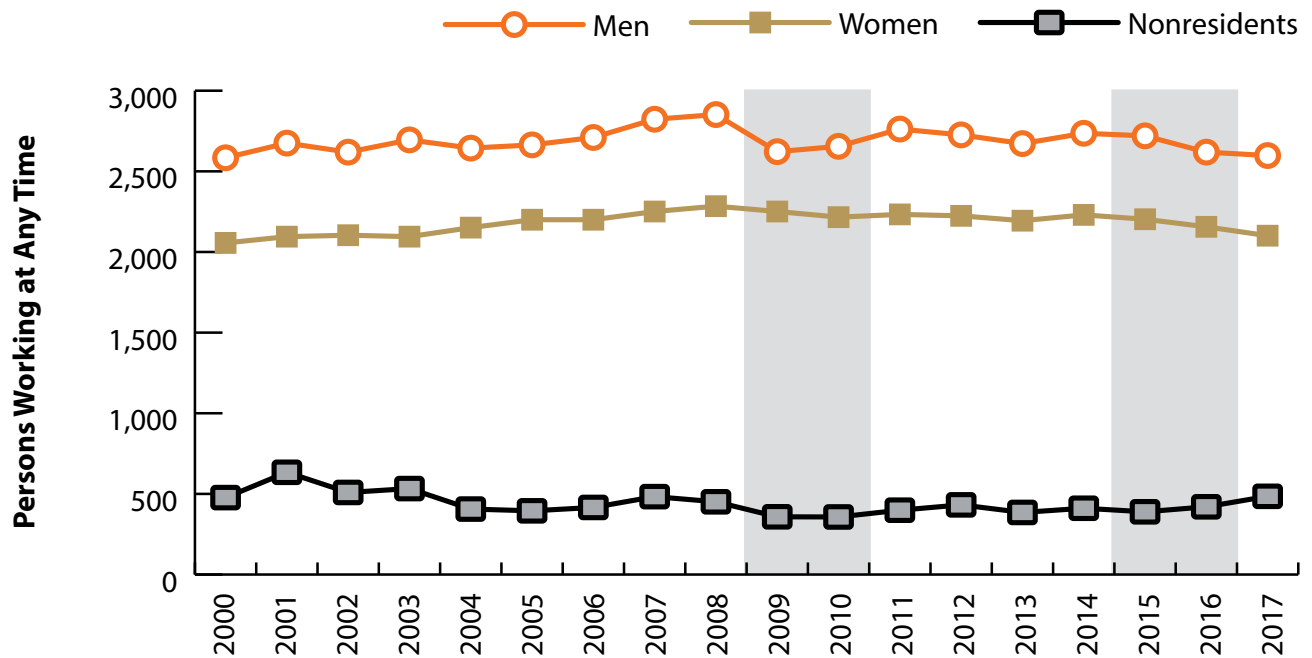


Figure: Persons Working in Big Horn County at Any Time by Gender, 2000-2017

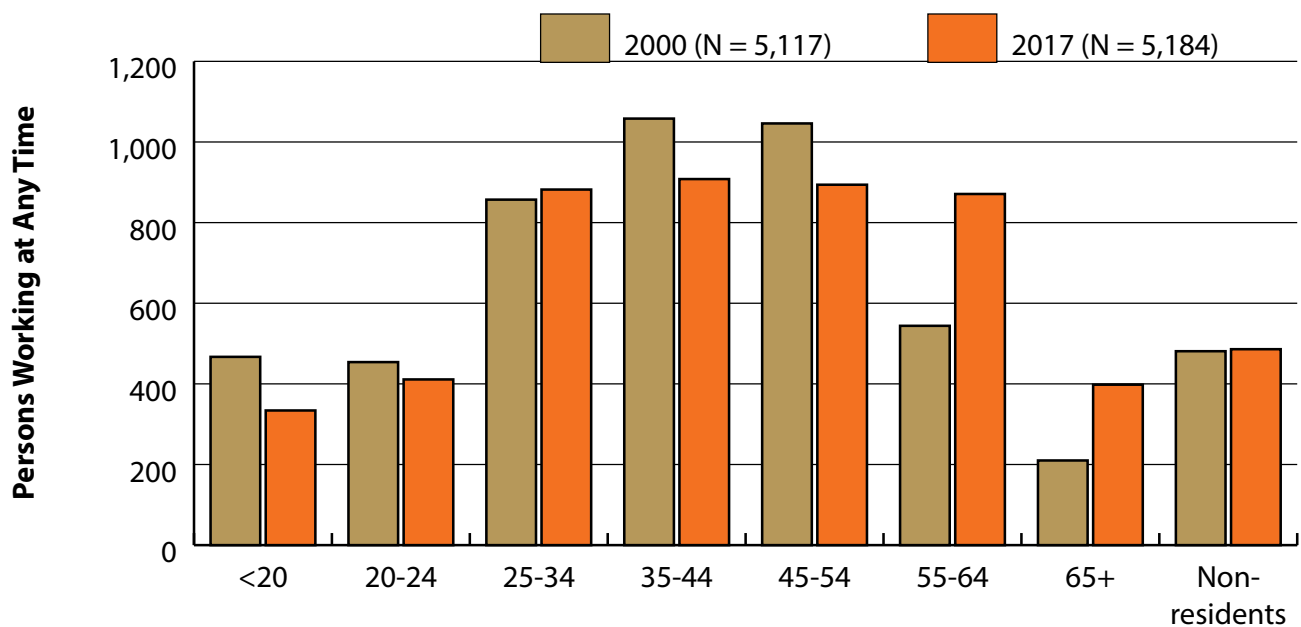


Figure: Persons Working in Big Horn County at Any Time by Age, 2000-2017

Note: Nonresidents are individuals for whom demographic data are not available.
 Shaded areas indicate periods of economic downturn: 2009Q1-2010Q1 and 2015Q2-2016Q4.
 Source: Demographics of Persons Working in Wyoming by County, Industry, Age, & Gender, 2000-2017. Research & Planning, Wyoming Department of Workforce Services. Prepared by M. Moore, Research & Planning, WY DWS, 6/12/18.

Wages for Persons Working in Big Horn County by Gender, 2000-2017

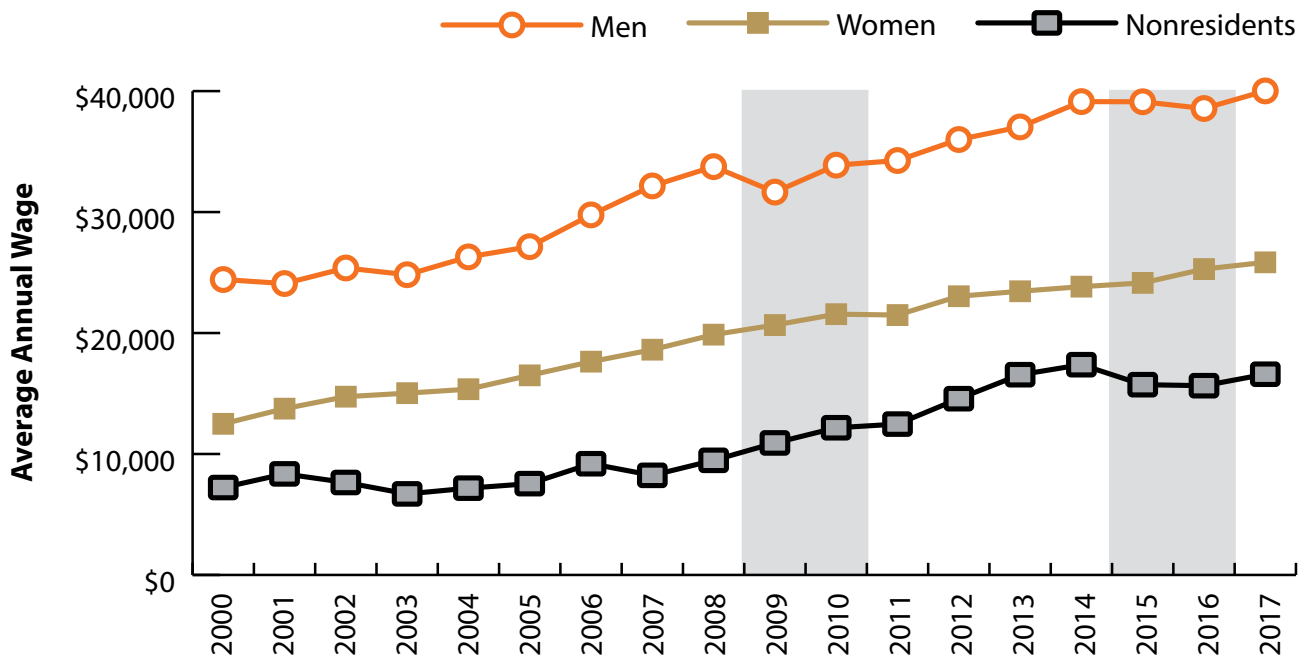


Figure: Average Annual Wage for Persons Working in Big Horn County at Any Time by Age, 2000-2017

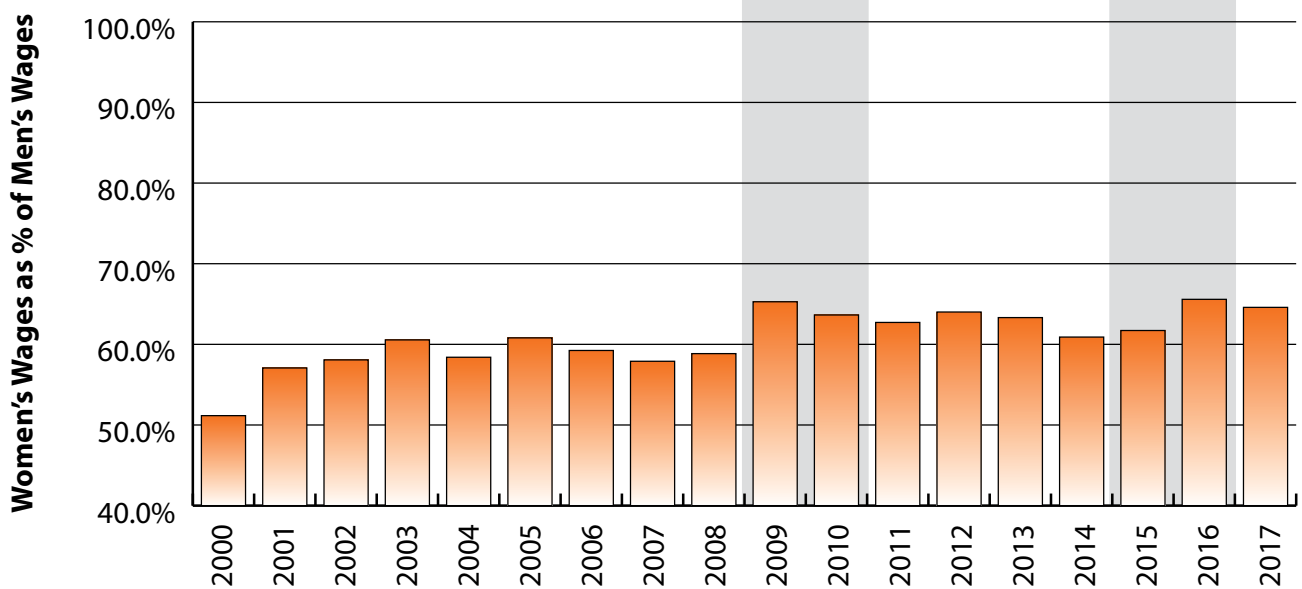


Figure: Women's Average Annual Wages as a Percent of Men's Wages for Persons Working in Big Horn County at Any Time by Age, 2000-2017

Note: Nonresidents are individuals for whom demographic data are not available.
 Shaded areas indicate periods of economic downturn: 2009Q1-2010Q1 and 2015Q2-2016Q4.
 Source: Demographics of Persons Working in Wyoming by County, Industry, Age, & Gender, 2000-2017. Research & Planning, Wyoming Department of Workforce Services. Prepared by M. Moore, Research & Planning, WY DWS, 6/12/18.

Average Earnings by Age and Gender with Place of Work in Big Horn County in 2000

| Gender | Age Group | Number | Age Percent | Gender Percent | Average Annual Wage | Average Quarters Worked | Average Annual Employers |
|--------|-----------|--------|-------------|----------------|---------------------|-------------------------|--------------------------|
| Women | 00-19 | 235 | 11.4 | 0.0 | \$2,682 | 2.6 | 1.4 |
| Women | 20-24 | 164 | 8.0 | 0.0 | \$6,753 | 2.9 | 1.7 |
| Women | 25-34 | 342 | 16.6 | 0.0 | \$11,553 | 3.2 | 1.5 |
| Women | 35-44 | 503 | 24.5 | 0.0 | \$14,963 | 3.3 | 1.4 |
| Women | 45-54 | 485 | 23.6 | 0.0 | \$17,296 | 3.4 | 1.3 |
| Women | 55-64 | 245 | 11.9 | 0.0 | \$14,325 | 3.3 | 1.2 |
| Women | 65-Up | 81 | 3.9 | 0.0 | \$7,056 | 2.9 | 1.1 |
| Women | N/A | 1 | 0.0 | 0.0 | \$3,589 | 3.0 | 1.0 |
| Women | Total | 2,056 | 100.0 | 40.2 | \$12,494 | 3.2 | 1.4 |
| Men | 00-19 | 232 | 9.0 | 0.0 | \$3,749 | 2.4 | 1.4 |
| Men | 20-24 | 290 | 11.2 | 0.0 | \$14,114 | 3.1 | 1.6 |
| Men | 25-34 | 515 | 19.9 | 0.0 | \$23,265 | 3.3 | 1.4 |
| Men | 35-44 | 555 | 21.5 | 0.0 | \$31,031 | 3.4 | 1.3 |
| Men | 45-54 | 561 | 21.7 | 0.0 | \$32,157 | 3.5 | 1.2 |
| Men | 55-64 | 299 | 11.6 | 0.0 | \$28,035 | 3.3 | 1.2 |
| Men | 65-Up | 129 | 5.0 | 0.0 | \$19,061 | 3.1 | 1.2 |
| Men | N/A | 3 | 0.1 | 0.0 | \$19,490 | 2.0 | 1.0 |
| Men | Total | 2,584 | 100.0 | 50.5 | \$24,422 | 3.2 | 1.3 |
| N/A | N/A | 477 | 100.0 | 0.0 | \$7,226 | 1.6 | 1.0 |
| N/A | Total | 477 | 100.0 | 9.3 | \$7,226 | 1.6 | 1.0 |
| Total | 00-19 | 467 | 9.1 | 0.0 | \$3,212 | 2.5 | 1.4 |
| Total | 20-24 | 454 | 8.9 | 0.0 | \$11,455 | 3.0 | 1.7 |
| Total | 25-34 | 857 | 16.7 | 0.0 | \$18,591 | 3.2 | 1.4 |
| Total | 35-44 | 1,058 | 20.7 | 0.0 | \$23,392 | 3.3 | 1.3 |
| Total | 45-54 | 1,046 | 20.4 | 0.0 | \$25,267 | 3.5 | 1.3 |
| Total | 55-64 | 544 | 10.6 | 0.0 | \$21,860 | 3.3 | 1.2 |
| Total | 65-Up | 210 | 4.1 | 0.0 | \$14,430 | 3.0 | 1.2 |
| Total | N/A | 481 | 9.4 | 0.0 | \$7,295 | 1.6 | 1.0 |
| Total | Total | 5,117 | 100.0 | 100.0 | \$18,027 | 3.1 | 1.3 |

Note: Persons worked at any time during the year.

County Determination: Based on county of employment in which the person made the most money in the year.

N/A: Represents persons with demographic data that is unavailable.

N/A = Nonresidents, individuals for whom demographic data are not available.

Source: Demographics of Persons Working in Wyoming by County, Industry, Age, & Gender, 2000-2017.
Research & Planning, Wyoming Department of Workforce Services.

Prepared by M. Moore, Research & Planning, WY DWS, 6/12/18.

Average Earnings by Age and Gender with Place of Work in Big Horn County in 2001

| Gender | Age Group | Number | Age Percent | Gender Percent | Average Annual Wage | Average Quarters Worked | Average Annual Employers |
|--------|-----------|--------|-------------|----------------|---------------------|-------------------------|--------------------------|
| Women | 00-19 | 240 | 11.5 | 0.0 | \$2,829 | 2.7 | 1.5 |
| Women | 20-24 | 178 | 8.5 | 0.0 | \$6,665 | 2.8 | 1.7 |
| Women | 25-34 | 339 | 16.2 | 0.0 | \$12,235 | 3.2 | 1.5 |
| Women | 35-44 | 495 | 23.6 | 0.0 | \$16,801 | 3.5 | 1.3 |
| Women | 45-54 | 489 | 23.3 | 0.0 | \$19,409 | 3.6 | 1.2 |
| Women | 55-64 | 262 | 12.5 | 0.0 | \$16,030 | 3.4 | 1.2 |
| Women | 65-Up | 89 | 4.2 | 0.0 | \$8,747 | 2.9 | 1.2 |
| Women | N/A | 3 | 0.1 | 0.0 | \$2,068 | 1.7 | 1.0 |
| Women | Total | 2,095 | 100.0 | 38.8 | \$13,749 | 3.3 | 1.4 |
| Men | 00-19 | 270 | 10.1 | 0.0 | \$3,942 | 2.5 | 1.5 |
| Men | 20-24 | 302 | 11.3 | 0.0 | \$15,191 | 3.0 | 1.6 |
| Men | 25-34 | 528 | 19.7 | 0.0 | \$23,208 | 3.3 | 1.4 |
| Men | 35-44 | 565 | 21.1 | 0.0 | \$30,411 | 3.4 | 1.3 |
| Men | 45-54 | 559 | 20.9 | 0.0 | \$32,279 | 3.5 | 1.2 |
| Men | 55-64 | 304 | 11.4 | 0.0 | \$28,907 | 3.5 | 1.2 |
| Men | 65-Up | 145 | 5.4 | 0.0 | \$17,054 | 3.0 | 1.2 |
| Men | N/A | 2 | 0.1 | 0.0 | \$26,020 | 2.5 | 1.0 |
| Men | Total | 2,675 | 100.0 | 49.5 | \$24,091 | 3.2 | 1.4 |
| N/A | N/A | 634 | 100.0 | 0.0 | \$8,355 | 1.5 | 1.0 |
| N/A | Total | 634 | 100.0 | 11.7 | \$8,355 | 1.5 | 1.0 |
| Total | 00-19 | 510 | 9.4 | 0.0 | \$3,418 | 2.5 | 1.5 |
| Total | 20-24 | 480 | 8.9 | 0.0 | \$12,029 | 2.9 | 1.7 |
| Total | 25-34 | 867 | 16.0 | 0.0 | \$18,917 | 3.2 | 1.4 |
| Total | 35-44 | 1,060 | 19.6 | 0.0 | \$24,055 | 3.5 | 1.3 |
| Total | 45-54 | 1,048 | 19.4 | 0.0 | \$26,274 | 3.5 | 1.2 |
| Total | 55-64 | 566 | 10.5 | 0.0 | \$22,947 | 3.4 | 1.2 |
| Total | 65-Up | 234 | 4.3 | 0.0 | \$13,895 | 3.0 | 1.2 |
| Total | N/A | 639 | 11.8 | 0.0 | \$8,381 | 1.5 | 1.0 |
| Total | Total | 5,404 | 100.0 | 100.0 | \$18,236 | 3.1 | 1.3 |

Note: Persons worked at any time during the year.

County Determination: Based on county of employment in which the person made the most money in the year.

N/A: Represents persons with demographic data that is unavailable.

N/A = Nonresidents, individuals for whom demographic data are not available.

Source: Demographics of Persons Working in Wyoming by County, Industry, Age, & Gender, 2000-2017.
Research & Planning, Wyoming Department of Workforce Services.

Prepared by M. Moore, Research & Planning, WY DWS, 6/12/18.

Average Earnings by Age and Gender with Place of Work in Big Horn County in 2002

| Gender | Age Group | Number | Age Percent | Gender Percent | Average Annual Wage | Average Quarters Worked | Average Annual Employers |
|--------|-----------|--------|-------------|----------------|---------------------|-------------------------|--------------------------|
| Women | 00-19 | 243 | 11.5 | 0.0 | \$2,987 | 2.6 | 1.5 |
| Women | 20-24 | 207 | 9.8 | 0.0 | \$6,836 | 2.8 | 1.6 |
| Women | 25-34 | 340 | 16.2 | 0.0 | \$13,647 | 3.3 | 1.4 |
| Women | 35-44 | 478 | 22.7 | 0.0 | \$18,359 | 3.5 | 1.4 |
| Women | 45-54 | 499 | 23.7 | 0.0 | \$20,426 | 3.6 | 1.3 |
| Women | 55-64 | 252 | 12.0 | 0.0 | \$17,942 | 3.4 | 1.3 |
| Women | 65-Up | 83 | 3.9 | 0.0 | \$8,812 | 3.0 | 1.2 |
| Women | N/A | 2 | 0.1 | 0.0 | \$2,265 | 1.0 | 1.0 |
| Women | Total | 2,104 | 100.0 | 40.2 | \$14,737 | 3.3 | 1.4 |
| Men | 00-19 | 242 | 9.2 | 0.0 | \$3,699 | 2.4 | 1.5 |
| Men | 20-24 | 304 | 11.6 | 0.0 | \$15,009 | 2.9 | 1.5 |
| Men | 25-34 | 494 | 18.9 | 0.0 | \$25,890 | 3.4 | 1.4 |
| Men | 35-44 | 548 | 20.9 | 0.0 | \$31,396 | 3.4 | 1.3 |
| Men | 45-54 | 546 | 20.8 | 0.0 | \$33,352 | 3.5 | 1.2 |
| Men | 55-64 | 347 | 13.2 | 0.0 | \$30,474 | 3.5 | 1.3 |
| Men | 65-Up | 136 | 5.2 | 0.0 | \$15,869 | 3.0 | 1.2 |
| Men | N/A | 2 | 0.1 | 0.0 | \$33,373 | 2.5 | 1.0 |
| Men | Total | 2,619 | 100.0 | 50.1 | \$25,377 | 3.3 | 1.3 |
| N/A | N/A | 509 | 100.0 | 0.0 | \$7,643 | 1.6 | 1.1 |
| N/A | Total | 509 | 100.0 | 9.7 | \$7,643 | 1.6 | 1.1 |
| Total | 00-19 | 485 | 9.3 | 0.0 | \$3,342 | 2.5 | 1.5 |
| Total | 20-24 | 511 | 9.8 | 0.0 | \$11,698 | 2.9 | 1.6 |
| Total | 25-34 | 834 | 15.9 | 0.0 | \$20,899 | 3.4 | 1.4 |
| Total | 35-44 | 1,026 | 19.6 | 0.0 | \$25,322 | 3.5 | 1.3 |
| Total | 45-54 | 1,045 | 20.0 | 0.0 | \$27,180 | 3.5 | 1.3 |
| Total | 55-64 | 599 | 11.4 | 0.0 | \$25,202 | 3.5 | 1.3 |
| Total | 65-Up | 219 | 4.2 | 0.0 | \$13,194 | 3.0 | 1.2 |
| Total | N/A | 513 | 9.8 | 0.0 | \$7,722 | 1.6 | 1.1 |
| Total | Total | 5,232 | 100.0 | 100.0 | \$19,373 | 3.1 | 1.3 |

Note: Persons worked at any time during the year.

County Determination: Based on county of employment in which the person made the most money in the year.

N/A: Represents persons with demographic data that is unavailable.

N/A = Nonresidents, individuals for whom demographic data are not available.

Source: Demographics of Persons Working in Wyoming by County, Industry, Age, & Gender, 2000-2017.
Research & Planning, Wyoming Department of Workforce Services.

Prepared by M. Moore, Research & Planning, WY DWS, 6/12/18.

Average Earnings by Age and Gender with Place of Work in Big Horn County in 2003

| Gender | Age Group | Number | Age Percent | Gender Percent | Average Annual Wage | Average Quarters Worked | Average Annual Employers |
|--------|-----------|--------|-------------|----------------|---------------------|-------------------------|--------------------------|
| Women | 00-19 | 218 | 10.4 | 0.0 | \$2,570 | 2.4 | 1.4 |
| Women | 20-24 | 213 | 10.2 | 0.0 | \$7,275 | 2.8 | 1.5 |
| Women | 25-34 | 322 | 15.4 | 0.0 | \$14,253 | 3.3 | 1.4 |
| Women | 35-44 | 480 | 22.9 | 0.0 | \$18,578 | 3.5 | 1.3 |
| Women | 45-54 | 510 | 24.3 | 0.0 | \$20,194 | 3.5 | 1.2 |
| Women | 55-64 | 275 | 13.1 | 0.0 | \$17,864 | 3.4 | 1.2 |
| Women | 65-Up | 74 | 3.5 | 0.0 | \$8,790 | 3.1 | 1.1 |
| Women | N/A | 3 | 0.1 | 0.0 | \$2,109 | 1.3 | 1.0 |
| Women | Total | 2,095 | 100.0 | 39.4 | \$15,029 | 3.3 | 1.3 |
| Men | 00-19 | 259 | 9.6 | 0.0 | \$3,539 | 2.4 | 1.4 |
| Men | 20-24 | 338 | 12.5 | 0.0 | \$13,251 | 2.8 | 1.5 |
| Men | 25-34 | 510 | 18.9 | 0.0 | \$26,352 | 3.3 | 1.3 |
| Men | 35-44 | 524 | 19.4 | 0.0 | \$31,542 | 3.4 | 1.3 |
| Men | 45-54 | 559 | 20.7 | 0.0 | \$32,992 | 3.5 | 1.2 |
| Men | 55-64 | 355 | 13.2 | 0.0 | \$30,192 | 3.4 | 1.2 |
| Men | 65-Up | 148 | 5.5 | 0.0 | \$15,704 | 3.0 | 1.2 |
| Men | N/A | 2 | 0.1 | 0.0 | \$20,901 | 2.5 | 1.0 |
| Men | Total | 2,695 | 100.0 | 50.6 | \$24,820 | 3.2 | 1.3 |
| N/A | N/A | 533 | 100.0 | 0.0 | \$6,701 | 1.6 | 1.0 |
| N/A | Total | 533 | 100.0 | 10.0 | \$6,701 | 1.6 | 1.0 |
| Total | 00-19 | 477 | 9.0 | 0.0 | \$3,096 | 2.4 | 1.4 |
| Total | 20-24 | 551 | 10.4 | 0.0 | \$10,941 | 2.8 | 1.5 |
| Total | 25-34 | 832 | 15.6 | 0.0 | \$21,669 | 3.3 | 1.3 |
| Total | 35-44 | 1,004 | 18.9 | 0.0 | \$25,344 | 3.5 | 1.3 |
| Total | 45-54 | 1,069 | 20.1 | 0.0 | \$26,886 | 3.5 | 1.2 |
| Total | 55-64 | 630 | 11.8 | 0.0 | \$24,811 | 3.4 | 1.2 |
| Total | 65-Up | 222 | 4.2 | 0.0 | \$13,399 | 3.0 | 1.2 |
| Total | N/A | 538 | 10.1 | 0.0 | \$6,728 | 1.6 | 1.0 |
| Total | Total | 5,323 | 100.0 | 100.0 | \$19,152 | 3.1 | 1.3 |

Note: Persons worked at any time during the year.

County Determination: Based on county of employment in which the person made the most money in the year.

N/A: Represents persons with demographic data that is unavailable.

N/A = Nonresidents, individuals for whom demographic data are not available.

Source: Demographics of Persons Working in Wyoming by County, Industry, Age, & Gender, 2000-2017.
Research & Planning, Wyoming Department of Workforce Services.

Prepared by M. Moore, Research & Planning, WY DWS, 6/12/18.

Average Earnings by Age and Gender with Place of Work in Big Horn County in 2004

| Gender | Age Group | Number | Age Percent | Gender Percent | Average Annual Wage | Average Quarters Worked | Average Annual Employers |
|--------|-----------|--------|-------------|----------------|---------------------|-------------------------|--------------------------|
| Women | 00-19 | 218 | 10.1 | 0.0 | \$2,804 | 2.5 | 1.6 |
| Women | 20-24 | 222 | 10.3 | 0.0 | \$7,844 | 3.1 | 1.7 |
| Women | 25-34 | 341 | 15.9 | 0.0 | \$14,336 | 3.2 | 1.5 |
| Women | 35-44 | 457 | 21.2 | 0.0 | \$18,294 | 3.4 | 1.4 |
| Women | 45-54 | 533 | 24.8 | 0.0 | \$20,393 | 3.6 | 1.3 |
| Women | 55-64 | 302 | 14.0 | 0.0 | \$19,264 | 3.5 | 1.2 |
| Women | 65-Up | 75 | 3.5 | 0.0 | \$9,724 | 3.1 | 1.2 |
| Women | N/A | 3 | 0.1 | 0.0 | \$4,271 | 2.0 | 1.0 |
| Women | Total | 2,151 | 100.0 | 41.4 | \$15,356 | 3.3 | 1.4 |
| Men | 00-19 | 239 | 9.0 | 0.0 | \$3,600 | 2.4 | 1.3 |
| Men | 20-24 | 308 | 11.6 | 0.0 | \$14,967 | 3.0 | 1.7 |
| Men | 25-34 | 526 | 19.9 | 0.0 | \$26,546 | 3.3 | 1.4 |
| Men | 35-44 | 494 | 18.7 | 0.0 | \$32,920 | 3.6 | 1.3 |
| Men | 45-54 | 568 | 21.5 | 0.0 | \$35,031 | 3.5 | 1.3 |
| Men | 55-64 | 360 | 13.6 | 0.0 | \$31,397 | 3.5 | 1.2 |
| Men | 65-Up | 147 | 5.6 | 0.0 | \$17,514 | 3.2 | 1.2 |
| Men | N/A | 2 | 0.1 | 0.0 | \$25,844 | 2.0 | 1.0 |
| Men | Total | 2,644 | 100.0 | 50.8 | \$26,294 | 3.3 | 1.3 |
| N/A | N/A | 406 | 100.0 | 0.0 | \$7,175 | 1.8 | 1.1 |
| N/A | Total | 406 | 100.0 | 7.8 | \$7,175 | 1.8 | 1.1 |
| Total | 00-19 | 457 | 8.8 | 0.0 | \$3,220 | 2.4 | 1.5 |
| Total | 20-24 | 530 | 10.2 | 0.0 | \$11,983 | 3.0 | 1.7 |
| Total | 25-34 | 867 | 16.7 | 0.0 | \$21,743 | 3.3 | 1.4 |
| Total | 35-44 | 951 | 18.3 | 0.0 | \$25,891 | 3.5 | 1.3 |
| Total | 45-54 | 1,101 | 21.2 | 0.0 | \$27,945 | 3.5 | 1.3 |
| Total | 55-64 | 662 | 12.7 | 0.0 | \$25,862 | 3.5 | 1.2 |
| Total | 65-Up | 222 | 4.3 | 0.0 | \$14,882 | 3.2 | 1.2 |
| Total | N/A | 411 | 7.9 | 0.0 | \$7,245 | 1.8 | 1.1 |
| Total | Total | 5,201 | 100.0 | 100.0 | \$20,278 | 3.2 | 1.3 |

Note: Persons worked at any time during the year.

County Determination: Based on county of employment in which the person made the most money in the year.

N/A: Represents persons with demographic data that is unavailable.

N/A = Nonresidents, individuals for whom demographic data are not available.

Source: Demographics of Persons Working in Wyoming by County, Industry, Age, & Gender, 2000-2017.

Research & Planning, Wyoming Department of Workforce Services.

Prepared by M. Moore, Research & Planning, WY DWS, 6/12/18.

Average Earnings by Age and Gender with Place of Work in Big Horn County in 2005

| Gender | Age Group | Number | Age Percent | Gender Percent | Average Annual Wage | Average Quarters Worked | Average Annual Employers |
|--------|-----------|--------|-------------|----------------|---------------------|-------------------------|--------------------------|
| Women | 00-19 | 222 | 10.1 | 0.0 | \$2,590 | 2.4 | 1.5 |
| Women | 20-24 | 209 | 9.5 | 0.0 | \$8,034 | 2.9 | 1.7 |
| Women | 25-34 | 363 | 16.5 | 0.0 | \$14,639 | 3.2 | 1.6 |
| Women | 35-44 | 453 | 20.6 | 0.0 | \$19,873 | 3.5 | 1.4 |
| Women | 45-54 | 540 | 24.5 | 0.0 | \$21,832 | 3.6 | 1.3 |
| Women | 55-64 | 331 | 15.0 | 0.0 | \$21,174 | 3.5 | 1.2 |
| Women | 65-Up | 80 | 3.6 | 0.0 | \$11,652 | 3.3 | 1.2 |
| Women | N/A | 2 | 0.1 | 0.0 | \$1,913 | 2.0 | 1.0 |
| Women | Total | 2,200 | 100.0 | 41.8 | \$16,502 | 3.3 | 1.4 |
| Men | 00-19 | 254 | 9.5 | 0.0 | \$4,712 | 2.4 | 1.5 |
| Men | 20-24 | 319 | 12.0 | 0.0 | \$15,022 | 2.9 | 1.6 |
| Men | 25-34 | 495 | 18.6 | 0.0 | \$28,237 | 3.5 | 1.5 |
| Men | 35-44 | 491 | 18.4 | 0.0 | \$34,564 | 3.6 | 1.4 |
| Men | 45-54 | 564 | 21.2 | 0.0 | \$36,525 | 3.6 | 1.3 |
| Men | 55-64 | 376 | 14.1 | 0.0 | \$32,380 | 3.5 | 1.2 |
| Men | 65-Up | 164 | 6.2 | 0.0 | \$15,412 | 3.0 | 1.2 |
| Men | N/A | 1 | 0.0 | 0.0 | \$62,081 | 4.0 | 1.0 |
| Men | Total | 2,664 | 100.0 | 50.7 | \$27,140 | 3.3 | 1.4 |
| N/A | N/A | 395 | 100.0 | 0.0 | \$7,548 | 1.9 | 1.1 |
| N/A | Total | 395 | 100.0 | 7.5 | \$7,548 | 1.9 | 1.1 |
| Total | 00-19 | 476 | 9.1 | 0.0 | \$3,722 | 2.4 | 1.5 |
| Total | 20-24 | 528 | 10.0 | 0.0 | \$12,256 | 2.9 | 1.7 |
| Total | 25-34 | 858 | 16.3 | 0.0 | \$22,484 | 3.3 | 1.5 |
| Total | 35-44 | 944 | 18.0 | 0.0 | \$27,514 | 3.6 | 1.4 |
| Total | 45-54 | 1,104 | 21.0 | 0.0 | \$29,338 | 3.6 | 1.3 |
| Total | 55-64 | 707 | 13.4 | 0.0 | \$27,134 | 3.5 | 1.2 |
| Total | 65-Up | 244 | 4.6 | 0.0 | \$14,179 | 3.1 | 1.2 |
| Total | N/A | 398 | 7.6 | 0.0 | \$7,657 | 1.9 | 1.1 |
| Total | Total | 5,259 | 100.0 | 100.0 | \$21,218 | 3.2 | 1.4 |

Note: Persons worked at any time during the year.

County Determination: Based on county of employment in which the person made the most money in the year.

N/A: Represents persons with demographic data that is unavailable.

N/A = Nonresidents, individuals for whom demographic data are not available.

Source: Demographics of Persons Working in Wyoming by County, Industry, Age, & Gender, 2000-2017.

Research & Planning, Wyoming Department of Workforce Services.

Prepared by M. Moore, Research & Planning, WY DWS, 6/12/18.

Average Earnings by Age and Gender with Place of Work in Big Horn County in 2006

| Gender | Age Group | Number | Age Percent | Gender Percent | Average Annual Wage | Average Quarters Worked | Average Annual Employers |
|--------|-----------|--------|-------------|----------------|---------------------|-------------------------|--------------------------|
| Women | 00-19 | 241 | 11.0 | 0.0 | \$2,784 | 2.4 | 1.5 |
| Women | 20-24 | 215 | 9.8 | 0.0 | \$9,556 | 3.0 | 1.7 |
| Women | 25-34 | 316 | 14.4 | 0.0 | \$16,618 | 3.3 | 1.5 |
| Women | 35-44 | 435 | 19.8 | 0.0 | \$21,344 | 3.5 | 1.4 |
| Women | 45-54 | 540 | 24.5 | 0.0 | \$23,528 | 3.7 | 1.3 |
| Women | 55-64 | 350 | 15.9 | 0.0 | \$22,436 | 3.6 | 1.3 |
| Women | 65-Up | 101 | 4.6 | 0.0 | \$9,573 | 3.2 | 1.1 |
| Women | N/A | 2 | 0.1 | 0.0 | \$2,908 | 2.5 | 1.5 |
| Women | Total | 2,200 | 100.0 | 41.3 | \$17,633 | 3.4 | 1.4 |
| Men | 00-19 | 257 | 9.5 | 0.0 | \$4,680 | 2.4 | 1.4 |
| Men | 20-24 | 310 | 11.4 | 0.0 | \$18,213 | 3.1 | 1.7 |
| Men | 25-34 | 494 | 18.2 | 0.0 | \$30,527 | 3.4 | 1.3 |
| Men | 35-44 | 522 | 19.3 | 0.0 | \$36,440 | 3.5 | 1.3 |
| Men | 45-54 | 556 | 20.5 | 0.0 | \$40,342 | 3.6 | 1.3 |
| Men | 55-64 | 410 | 15.1 | 0.0 | \$34,759 | 3.5 | 1.2 |
| Men | 65-Up | 158 | 5.8 | 0.0 | \$18,724 | 3.2 | 1.3 |
| Men | N/A | 3 | 0.1 | 0.0 | \$24,056 | 2.7 | 2.3 |
| Men | Total | 2,710 | 100.0 | 50.9 | \$29,765 | 3.3 | 1.4 |
| N/A | N/A | 416 | 100.0 | 0.0 | \$9,194 | 1.9 | 1.1 |
| N/A | Total | 416 | 100.0 | 7.8 | \$9,194 | 1.9 | 1.1 |
| Total | 00-19 | 498 | 9.4 | 0.0 | \$3,762 | 2.4 | 1.5 |
| Total | 20-24 | 525 | 9.9 | 0.0 | \$14,667 | 3.0 | 1.7 |
| Total | 25-34 | 810 | 15.2 | 0.0 | \$25,101 | 3.4 | 1.4 |
| Total | 35-44 | 957 | 18.0 | 0.0 | \$29,579 | 3.5 | 1.4 |
| Total | 45-54 | 1,096 | 20.6 | 0.0 | \$32,058 | 3.6 | 1.3 |
| Total | 55-64 | 760 | 14.3 | 0.0 | \$29,084 | 3.5 | 1.2 |
| Total | 65-Up | 259 | 4.9 | 0.0 | \$15,155 | 3.2 | 1.2 |
| Total | N/A | 421 | 7.9 | 0.0 | \$9,271 | 1.9 | 1.1 |
| Total | Total | 5,326 | 100.0 | 100.0 | \$23,147 | 3.2 | 1.4 |

Note: Persons worked at any time during the year.

County Determination: Based on county of employment in which the person made the most money in the year.

N/A: Represents persons with demographic data that is unavailable.

N/A = Nonresidents, individuals for whom demographic data are not available.

Source: Demographics of Persons Working in Wyoming by County, Industry, Age, & Gender, 2000-2017.
Research & Planning, Wyoming Department of Workforce Services.

Prepared by M. Moore, Research & Planning, WY DWS, 6/12/18.

Average Earnings by Age and Gender with Place of Work in Big Horn County in 2007

| Gender | Age Group | Number | Age Percent | Gender Percent | Average Annual Wage | Average Quarters Worked | Average Annual Employers |
|--------|-----------|--------|-------------|----------------|---------------------|-------------------------|--------------------------|
| Women | 00-19 | 240 | 10.7 | 0.0 | \$2,878 | 2.5 | 1.5 |
| Women | 20-24 | 219 | 9.7 | 0.0 | \$8,248 | 2.9 | 1.7 |
| Women | 25-34 | 343 | 15.2 | 0.0 | \$16,390 | 3.2 | 1.5 |
| Women | 35-44 | 440 | 19.5 | 0.0 | \$22,954 | 3.5 | 1.4 |
| Women | 45-54 | 536 | 23.8 | 0.0 | \$24,682 | 3.6 | 1.3 |
| Women | 55-64 | 367 | 16.3 | 0.0 | \$24,796 | 3.6 | 1.2 |
| Women | 65-Up | 105 | 4.7 | 0.0 | \$12,993 | 3.2 | 1.2 |
| Women | N/A | 1 | 0.0 | 0.0 | \$5,852 | 4.0 | 1.0 |
| Women | Total | 2,251 | 100.0 | 40.5 | \$18,622 | 3.3 | 1.4 |
| Men | 00-19 | 274 | 9.7 | 0.0 | \$5,375 | 2.5 | 1.5 |
| Men | 20-24 | 318 | 11.3 | 0.0 | \$19,805 | 3.1 | 1.5 |
| Men | 25-34 | 527 | 18.7 | 0.0 | \$31,896 | 3.3 | 1.3 |
| Men | 35-44 | 541 | 19.2 | 0.0 | \$40,034 | 3.5 | 1.3 |
| Men | 45-54 | 575 | 20.4 | 0.0 | \$43,556 | 3.6 | 1.2 |
| Men | 55-64 | 415 | 14.7 | 0.0 | \$38,882 | 3.5 | 1.2 |
| Men | 65-Up | 170 | 6.0 | 0.0 | \$19,359 | 3.1 | 1.2 |
| Men | N/A | 3 | 0.1 | 0.0 | \$26,990 | 2.0 | 1.0 |
| Men | Total | 2,823 | 100.0 | 50.8 | \$32,161 | 3.3 | 1.3 |
| N/A | N/A | 483 | 100.0 | 0.0 | \$8,235 | 1.9 | 1.1 |
| N/A | Total | 483 | 100.0 | 8.7 | \$8,235 | 1.9 | 1.1 |
| Total | 00-19 | 514 | 9.2 | 0.0 | \$4,210 | 2.5 | 1.5 |
| Total | 20-24 | 537 | 9.7 | 0.0 | \$15,092 | 3.0 | 1.6 |
| Total | 25-34 | 870 | 15.7 | 0.0 | \$25,783 | 3.3 | 1.4 |
| Total | 35-44 | 981 | 17.7 | 0.0 | \$32,373 | 3.5 | 1.3 |
| Total | 45-54 | 1,111 | 20.0 | 0.0 | \$34,450 | 3.6 | 1.2 |
| Total | 55-64 | 782 | 14.1 | 0.0 | \$32,271 | 3.6 | 1.2 |
| Total | 65-Up | 275 | 4.9 | 0.0 | \$16,928 | 3.2 | 1.2 |
| Total | N/A | 487 | 8.8 | 0.0 | \$8,346 | 1.9 | 1.1 |
| Total | Total | 5,557 | 100.0 | 100.0 | \$24,597 | 3.2 | 1.3 |

Note: Persons worked at any time during the year.

County Determination: Based on county of employment in which the person made the most money in the year.

N/A: Represents persons with demographic data that is unavailable.

N/A = Nonresidents, individuals for whom demographic data are not available.

Source: Demographics of Persons Working in Wyoming by County, Industry, Age, & Gender, 2000-2017.
Research & Planning, Wyoming Department of Workforce Services.

Prepared by M. Moore, Research & Planning, WY DWS, 6/12/18.

Average Earnings by Age and Gender with Place of Work in Big Horn County in 2008

| Gender | Age Group | Number | Age Percent | Gender Percent | Average Annual Wage | Average Quarters Worked | Average Annual Employers |
|--------|-----------|--------|-------------|----------------|---------------------|-------------------------|--------------------------|
| Women | 00-19 | 230 | 10.1 | 0.0 | \$3,096 | 2.6 | 1.5 |
| Women | 20-24 | 208 | 9.1 | 0.0 | \$9,196 | 2.9 | 1.6 |
| Women | 25-34 | 355 | 15.5 | 0.0 | \$17,530 | 3.3 | 1.5 |
| Women | 35-44 | 403 | 17.6 | 0.0 | \$24,434 | 3.6 | 1.3 |
| Women | 45-54 | 555 | 24.3 | 0.0 | \$26,745 | 3.6 | 1.3 |
| Women | 55-64 | 414 | 18.1 | 0.0 | \$25,180 | 3.6 | 1.2 |
| Women | 65-Up | 118 | 5.2 | 0.0 | \$11,915 | 3.2 | 1.2 |
| Women | N/A | 1 | 0.0 | 0.0 | \$4,126 | 4.0 | 1.0 |
| Women | Total | 2,284 | 100.0 | 40.9 | \$19,866 | 3.4 | 1.3 |
| Men | 00-19 | 253 | 8.9 | 0.0 | \$4,965 | 2.4 | 1.4 |
| Men | 20-24 | 318 | 11.2 | 0.0 | \$19,953 | 3.0 | 1.5 |
| Men | 25-34 | 534 | 18.7 | 0.0 | \$33,351 | 3.4 | 1.4 |
| Men | 35-44 | 534 | 18.7 | 0.0 | \$42,519 | 3.5 | 1.3 |
| Men | 45-54 | 582 | 20.4 | 0.0 | \$46,188 | 3.6 | 1.2 |
| Men | 55-64 | 429 | 15.0 | 0.0 | \$41,268 | 3.6 | 1.2 |
| Men | 65-Up | 201 | 7.0 | 0.0 | \$17,484 | 3.0 | 1.2 |
| Men | N/A | 1 | 0.0 | 0.0 | \$55,686 | 3.0 | 1.0 |
| Men | Total | 2,852 | 100.0 | 51.0 | \$33,756 | 3.3 | 1.3 |
| N/A | N/A | 451 | 100.0 | 0.0 | \$9,476 | 2.0 | 1.1 |
| N/A | Total | 451 | 100.0 | 8.1 | \$9,476 | 2.0 | 1.1 |
| Total | 00-19 | 483 | 8.6 | 0.0 | \$4,075 | 2.5 | 1.4 |
| Total | 20-24 | 526 | 9.4 | 0.0 | \$15,699 | 3.0 | 1.6 |
| Total | 25-34 | 889 | 15.9 | 0.0 | \$27,033 | 3.3 | 1.4 |
| Total | 35-44 | 937 | 16.8 | 0.0 | \$34,741 | 3.5 | 1.3 |
| Total | 45-54 | 1,137 | 20.4 | 0.0 | \$36,697 | 3.6 | 1.2 |
| Total | 55-64 | 843 | 15.1 | 0.0 | \$33,368 | 3.6 | 1.2 |
| Total | 65-Up | 319 | 5.7 | 0.0 | \$15,424 | 3.1 | 1.2 |
| Total | N/A | 453 | 8.1 | 0.0 | \$9,566 | 2.0 | 1.1 |
| Total | Total | 5,587 | 100.0 | 100.0 | \$26,117 | 3.2 | 1.3 |

Note: Persons worked at any time during the year.

County Determination: Based on county of employment in which the person made the most money in the year.

N/A: Represents persons with demographic data that is unavailable.

N/A = Nonresidents, individuals for whom demographic data are not available.

Source: Demographics of Persons Working in Wyoming by County, Industry, Age, & Gender, 2000-2017.
Research & Planning, Wyoming Department of Workforce Services.

Prepared by M. Moore, Research & Planning, WY DWS, 6/12/18.

Average Earnings by Age and Gender with Place of Work in Big Horn County in 2009

| Gender | Age Group | Number | Age Percent | Gender Percent | Average Annual Wage | Average Quarters Worked | Average Annual Employers |
|--------|-----------|--------|-------------|----------------|---------------------|-------------------------|--------------------------|
| Women | 00-19 | 199 | 8.8 | 0.0 | \$3,161 | 2.5 | 1.3 |
| Women | 20-24 | 193 | 8.6 | 0.0 | \$9,332 | 2.9 | 1.5 |
| Women | 25-34 | 365 | 16.2 | 0.0 | \$18,527 | 3.3 | 1.3 |
| Women | 35-44 | 391 | 17.4 | 0.0 | \$23,969 | 3.5 | 1.3 |
| Women | 45-54 | 536 | 23.8 | 0.0 | \$27,803 | 3.6 | 1.2 |
| Women | 55-64 | 432 | 19.2 | 0.0 | \$26,068 | 3.6 | 1.2 |
| Women | 65-Up | 133 | 5.9 | 0.0 | \$13,340 | 3.2 | 1.1 |
| Women | N/A | 2 | 0.1 | 0.0 | \$4,255 | 2.0 | 1.0 |
| Women | Total | 2,251 | 100.0 | 43.0 | \$20,662 | 3.4 | 1.3 |
| Men | 00-19 | 203 | 7.7 | 0.0 | \$4,578 | 2.3 | 1.2 |
| Men | 20-24 | 286 | 10.9 | 0.0 | \$14,793 | 2.7 | 1.5 |
| Men | 25-34 | 514 | 19.6 | 0.0 | \$29,573 | 3.3 | 1.3 |
| Men | 35-44 | 461 | 17.6 | 0.0 | \$40,477 | 3.5 | 1.2 |
| Men | 45-54 | 566 | 21.6 | 0.0 | \$41,145 | 3.5 | 1.3 |
| Men | 55-64 | 416 | 15.9 | 0.0 | \$42,850 | 3.6 | 1.2 |
| Men | 65-Up | 175 | 6.7 | 0.0 | \$16,301 | 3.1 | 1.2 |
| Men | N/A | 1 | 0.0 | 0.0 | \$1,210 | 2.0 | 1.0 |
| Men | Total | 2,622 | 100.0 | 50.1 | \$31,651 | 3.3 | 1.3 |
| N/A | N/A | 358 | 100.0 | 0.0 | \$10,914 | 2.1 | 1.0 |
| N/A | Total | 358 | 100.0 | 6.8 | \$10,914 | 2.1 | 1.0 |
| Total | 00-19 | 402 | 7.7 | 0.0 | \$3,876 | 2.4 | 1.3 |
| Total | 20-24 | 479 | 9.2 | 0.0 | \$12,593 | 2.8 | 1.5 |
| Total | 25-34 | 879 | 16.8 | 0.0 | \$24,986 | 3.3 | 1.3 |
| Total | 35-44 | 852 | 16.3 | 0.0 | \$32,901 | 3.5 | 1.3 |
| Total | 45-54 | 1,102 | 21.1 | 0.0 | \$34,656 | 3.6 | 1.3 |
| Total | 55-64 | 848 | 16.2 | 0.0 | \$34,301 | 3.6 | 1.2 |
| Total | 65-Up | 308 | 5.9 | 0.0 | \$15,022 | 3.2 | 1.2 |
| Total | N/A | 361 | 6.9 | 0.0 | \$10,850 | 2.1 | 1.0 |
| Total | Total | 5,231 | 100.0 | 100.0 | \$25,503 | 3.2 | 1.3 |

Note: Persons worked at any time during the year.

County Determination: Based on county of employment in which the person made the most money in the year.

N/A: Represents persons with demographic data that is unavailable.

N/A = Nonresidents, individuals for whom demographic data are not available.

Source: Demographics of Persons Working in Wyoming by County, Industry, Age, & Gender, 2000-2017.

Research & Planning, Wyoming Department of Workforce Services.

Prepared by M. Moore, Research & Planning, WY DWS, 6/12/18.

Average Earnings by Age and Gender with Place of Work in Big Horn County in 2010

| Gender | Age Group | Number | Age Percent | Gender Percent | Average Annual Wage | Average Quarters Worked | Average Annual Employers |
|--------|-----------|--------|-------------|----------------|---------------------|-------------------------|--------------------------|
| Women | 00-19 | 186 | 8.4 | 0.0 | \$3,484 | 2.5 | 1.4 |
| Women | 20-24 | 196 | 8.8 | 0.0 | \$9,616 | 2.9 | 1.5 |
| Women | 25-34 | 387 | 17.5 | 0.0 | \$19,097 | 3.3 | 1.4 |
| Women | 35-44 | 382 | 17.2 | 0.0 | \$24,933 | 3.6 | 1.3 |
| Women | 45-54 | 514 | 23.2 | 0.0 | \$29,004 | 3.6 | 1.2 |
| Women | 55-64 | 418 | 18.9 | 0.0 | \$27,196 | 3.7 | 1.2 |
| Women | 65-Up | 132 | 6.0 | 0.0 | \$15,506 | 3.3 | 1.1 |
| Women | N/A | 1 | 0.0 | 0.0 | \$6,530 | 3.0 | 1.0 |
| Women | Total | 2,216 | 100.0 | 42.4 | \$21,560 | 3.4 | 1.3 |
| Men | 00-19 | 186 | 7.0 | 0.0 | \$5,073 | 2.3 | 1.3 |
| Men | 20-24 | 284 | 10.7 | 0.0 | \$16,478 | 3.0 | 1.5 |
| Men | 25-34 | 500 | 18.8 | 0.0 | \$33,954 | 3.4 | 1.3 |
| Men | 35-44 | 481 | 18.1 | 0.0 | \$42,170 | 3.5 | 1.2 |
| Men | 45-54 | 555 | 20.9 | 0.0 | \$42,842 | 3.6 | 1.2 |
| Men | 55-64 | 466 | 17.6 | 0.0 | \$42,408 | 3.5 | 1.2 |
| Men | 65-Up | 183 | 6.9 | 0.0 | \$19,232 | 3.2 | 1.1 |
| Men | Total | 2,655 | 100.0 | 50.8 | \$33,877 | 3.4 | 1.3 |
| N/A | N/A | 357 | 100.0 | 0.0 | \$12,169 | 2.1 | 1.1 |
| N/A | Total | 357 | 100.0 | 6.8 | \$12,169 | 2.1 | 1.1 |
| Total | 00-19 | 372 | 7.1 | 0.0 | \$4,278 | 2.4 | 1.3 |
| Total | 20-24 | 480 | 9.2 | 0.0 | \$13,676 | 2.9 | 1.5 |
| Total | 25-34 | 887 | 17.0 | 0.0 | \$27,472 | 3.4 | 1.3 |
| Total | 35-44 | 863 | 16.5 | 0.0 | \$34,540 | 3.6 | 1.3 |
| Total | 45-54 | 1,069 | 20.4 | 0.0 | \$36,188 | 3.6 | 1.2 |
| Total | 55-64 | 884 | 16.9 | 0.0 | \$35,215 | 3.6 | 1.2 |
| Total | 65-Up | 315 | 6.0 | 0.0 | \$17,671 | 3.2 | 1.1 |
| Total | N/A | 358 | 6.8 | 0.0 | \$12,153 | 2.1 | 1.1 |
| Total | Total | 5,228 | 100.0 | 100.0 | \$27,174 | 3.3 | 1.3 |

Note: Persons worked at any time during the year.

County Determination: Based on county of employment in which the person made the most money in the year.

N/A: Represents persons with demographic data that is unavailable.

N/A = Nonresidents, individuals for whom demographic data are not available.

Source: Demographics of Persons Working in Wyoming by County, Industry, Age, & Gender, 2000-2017.
Research & Planning, Wyoming Department of Workforce Services.

Prepared by M. Moore, Research & Planning, WY DWS, 6/12/18.

Average Earnings by Age and Gender with Place of Work in Big Horn County in 2011

| Gender | Age Group | Number | Age Percent | Gender Percent | Average Annual Wage | Average Quarters Worked | Average Annual Employers |
|--------|-----------|--------|-------------|----------------|---------------------|-------------------------|--------------------------|
| Women | 00-19 | 190 | 8.5 | 0.0 | \$3,415 | 2.5 | 1.3 |
| Women | 20-24 | 194 | 8.7 | 0.0 | \$9,729 | 2.9 | 1.5 |
| Women | 25-34 | 413 | 18.5 | 0.0 | \$18,449 | 3.2 | 1.4 |
| Women | 35-44 | 390 | 17.5 | 0.0 | \$24,724 | 3.5 | 1.3 |
| Women | 45-54 | 497 | 22.3 | 0.0 | \$29,268 | 3.7 | 1.3 |
| Women | 55-64 | 412 | 18.5 | 0.0 | \$27,552 | 3.7 | 1.2 |
| Women | 65-Up | 136 | 6.1 | 0.0 | \$16,762 | 3.3 | 1.1 |
| Women | N/A | 1 | 0.0 | 0.0 | \$4,229 | 3.0 | 1.0 |
| Women | Total | 2,233 | 100.0 | 41.4 | \$21,487 | 3.4 | 1.3 |
| Men | 00-19 | 195 | 7.1 | 0.0 | \$4,852 | 2.4 | 1.3 |
| Men | 20-24 | 317 | 11.5 | 0.0 | \$18,072 | 2.9 | 1.5 |
| Men | 25-34 | 545 | 19.7 | 0.0 | \$33,325 | 3.3 | 1.3 |
| Men | 35-44 | 485 | 17.6 | 0.0 | \$43,246 | 3.5 | 1.3 |
| Men | 45-54 | 560 | 20.3 | 0.0 | \$43,285 | 3.6 | 1.3 |
| Men | 55-64 | 470 | 17.0 | 0.0 | \$43,548 | 3.5 | 1.2 |
| Men | 65-Up | 190 | 6.9 | 0.0 | \$21,616 | 3.1 | 1.1 |
| Men | Total | 2,762 | 100.0 | 51.2 | \$34,260 | 3.3 | 1.3 |
| N/A | N/A | 399 | 100.0 | 0.0 | \$12,472 | 2.1 | 1.1 |
| N/A | Total | 399 | 100.0 | 7.4 | \$12,472 | 2.1 | 1.1 |
| Total | 00-19 | 385 | 7.1 | 0.0 | \$4,143 | 2.5 | 1.3 |
| Total | 20-24 | 511 | 9.5 | 0.0 | \$14,905 | 2.9 | 1.5 |
| Total | 25-34 | 958 | 17.8 | 0.0 | \$26,912 | 3.3 | 1.4 |
| Total | 35-44 | 875 | 16.2 | 0.0 | \$34,990 | 3.5 | 1.3 |
| Total | 45-54 | 1,057 | 19.6 | 0.0 | \$36,695 | 3.6 | 1.3 |
| Total | 55-64 | 882 | 16.4 | 0.0 | \$36,076 | 3.6 | 1.2 |
| Total | 65-Up | 326 | 6.0 | 0.0 | \$19,591 | 3.2 | 1.1 |
| Total | N/A | 400 | 7.4 | 0.0 | \$12,451 | 2.1 | 1.1 |
| Total | Total | 5,394 | 100.0 | 100.0 | \$27,360 | 3.3 | 1.3 |

Note: Persons worked at any time during the year.

County Determination: Based on county of employment in which the person made the most money in the year.

N/A: Represents persons with demographic data that is unavailable.

N/A = Nonresidents, individuals for whom demographic data are not available.

Source: Demographics of Persons Working in Wyoming by County, Industry, Age, & Gender, 2000-2017.
Research & Planning, Wyoming Department of Workforce Services.

Prepared by M. Moore, Research & Planning, WY DWS, 6/12/18.

Average Earnings by Age and Gender with Place of Work in Big Horn County in 2012

| Gender | Age Group | Number | Age Percent | Gender Percent | Average Annual Wage | Average Quarters Worked | Average Annual Employers |
|--------|-----------|--------|-------------|----------------|---------------------|-------------------------|--------------------------|
| Women | 00-19 | 183 | 8.2 | 0.0 | \$3,383 | 2.4 | 1.3 |
| Women | 20-24 | 185 | 8.3 | 0.0 | \$10,028 | 3.0 | 1.7 |
| Women | 25-34 | 390 | 17.5 | 0.0 | \$21,298 | 3.4 | 1.4 |
| Women | 35-44 | 392 | 17.6 | 0.0 | \$26,480 | 3.6 | 1.4 |
| Women | 45-54 | 494 | 22.2 | 0.0 | \$31,215 | 3.6 | 1.2 |
| Women | 55-64 | 440 | 19.8 | 0.0 | \$28,116 | 3.6 | 1.2 |
| Women | 65-Up | 139 | 6.3 | 0.0 | \$16,467 | 3.4 | 1.1 |
| Women | N/A | 1 | 0.0 | 0.0 | \$3,515 | 2.0 | 1.0 |
| Women | Total | 2,224 | 100.0 | 41.3 | \$23,042 | 3.4 | 1.3 |
| Men | 00-19 | 209 | 7.7 | 0.0 | \$5,658 | 2.4 | 1.3 |
| Men | 20-24 | 309 | 11.3 | 0.0 | \$19,073 | 3.0 | 1.5 |
| Men | 25-34 | 533 | 19.6 | 0.0 | \$35,295 | 3.5 | 1.3 |
| Men | 35-44 | 492 | 18.0 | 0.0 | \$44,376 | 3.6 | 1.3 |
| Men | 45-54 | 524 | 19.2 | 0.0 | \$46,601 | 3.6 | 1.2 |
| Men | 55-64 | 456 | 16.7 | 0.0 | \$46,103 | 3.6 | 1.1 |
| Men | 65-Up | 202 | 7.4 | 0.0 | \$24,384 | 3.3 | 1.2 |
| Men | N/A | 1 | 0.0 | 0.0 | \$39,600 | 4.0 | 1.0 |
| Men | Total | 2,726 | 100.0 | 50.7 | \$35,997 | 3.4 | 1.3 |
| N/A | N/A | 432 | 100.0 | 0.0 | \$14,571 | 2.2 | 1.1 |
| N/A | Total | 432 | 100.0 | 8.0 | \$14,571 | 2.2 | 1.1 |
| Total | 00-19 | 392 | 7.3 | 0.0 | \$4,596 | 2.4 | 1.3 |
| Total | 20-24 | 494 | 9.2 | 0.0 | \$15,686 | 3.0 | 1.6 |
| Total | 25-34 | 923 | 17.1 | 0.0 | \$29,381 | 3.4 | 1.4 |
| Total | 35-44 | 884 | 16.4 | 0.0 | \$36,440 | 3.6 | 1.3 |
| Total | 45-54 | 1,018 | 18.9 | 0.0 | \$39,134 | 3.6 | 1.2 |
| Total | 55-64 | 896 | 16.6 | 0.0 | \$37,270 | 3.6 | 1.2 |
| Total | 65-Up | 341 | 6.3 | 0.0 | \$21,157 | 3.3 | 1.2 |
| Total | N/A | 434 | 8.1 | 0.0 | \$14,604 | 2.2 | 1.1 |
| Total | Total | 5,382 | 100.0 | 100.0 | \$28,924 | 3.3 | 1.3 |

Note: Persons worked at any time during the year.

County Determination: Based on county of employment in which the person made the most money in the year.

N/A: Represents persons with demographic data that is unavailable.

N/A = Nonresidents, individuals for whom demographic data are not available.

Source: Demographics of Persons Working in Wyoming by County, Industry, Age, & Gender, 2000-2017.
Research & Planning, Wyoming Department of Workforce Services.

Prepared by M. Moore, Research & Planning, WY DWS, 6/12/18.

Average Earnings by Age and Gender with Place of Work in Big Horn County in 2013

| Gender | Age Group | Number | Age Percent | Gender Percent | Average Annual Wage | Average Quarters Worked | Average Annual Employers |
|--------|-----------|--------|-------------|----------------|---------------------|-------------------------|--------------------------|
| Women | 00-19 | 172 | 7.8 | 0.0 | \$3,535 | 2.4 | 1.3 |
| Women | 20-24 | 169 | 7.7 | 0.0 | \$10,540 | 3.0 | 1.6 |
| Women | 25-34 | 406 | 18.5 | 0.0 | \$20,172 | 3.3 | 1.4 |
| Women | 35-44 | 373 | 17.0 | 0.0 | \$28,541 | 3.6 | 1.3 |
| Women | 45-54 | 467 | 21.3 | 0.0 | \$31,497 | 3.6 | 1.3 |
| Women | 55-64 | 449 | 20.5 | 0.0 | \$28,821 | 3.6 | 1.2 |
| Women | 65-Up | 158 | 7.2 | 0.0 | \$16,317 | 3.4 | 1.1 |
| Women | Total | 2,194 | 100.0 | 41.8 | \$23,452 | 3.4 | 1.3 |
| Men | 00-19 | 168 | 6.3 | 0.0 | \$5,259 | 2.4 | 1.3 |
| Men | 20-24 | 287 | 10.7 | 0.0 | \$19,140 | 2.9 | 1.4 |
| Men | 25-34 | 538 | 20.1 | 0.0 | \$35,836 | 3.5 | 1.3 |
| Men | 35-44 | 468 | 17.5 | 0.0 | \$46,336 | 3.6 | 1.2 |
| Men | 45-54 | 510 | 19.1 | 0.0 | \$47,779 | 3.7 | 1.2 |
| Men | 55-64 | 489 | 18.3 | 0.0 | \$45,409 | 3.6 | 1.2 |
| Men | 65-Up | 211 | 7.9 | 0.0 | \$23,742 | 3.3 | 1.2 |
| Men | N/A | 1 | 0.0 | 0.0 | \$42,400 | 4.0 | 1.0 |
| Men | Total | 2,672 | 100.0 | 50.9 | \$37,038 | 3.4 | 1.3 |
| N/A | N/A | 385 | 100.0 | 0.0 | \$16,554 | 2.2 | 1.1 |
| N/A | Total | 385 | 100.0 | 7.3 | \$16,554 | 2.2 | 1.1 |
| Total | 00-19 | 340 | 6.5 | 0.0 | \$4,387 | 2.4 | 1.3 |
| Total | 20-24 | 456 | 8.7 | 0.0 | \$15,953 | 3.0 | 1.5 |
| Total | 25-34 | 944 | 18.0 | 0.0 | \$29,099 | 3.4 | 1.4 |
| Total | 35-44 | 841 | 16.0 | 0.0 | \$38,443 | 3.6 | 1.3 |
| Total | 45-54 | 977 | 18.6 | 0.0 | \$39,996 | 3.6 | 1.2 |
| Total | 55-64 | 938 | 17.9 | 0.0 | \$37,469 | 3.6 | 1.2 |
| Total | 65-Up | 369 | 7.0 | 0.0 | \$20,563 | 3.3 | 1.1 |
| Total | N/A | 386 | 7.4 | 0.0 | \$16,621 | 2.2 | 1.1 |
| Total | Total | 5,251 | 100.0 | 100.0 | \$29,859 | 3.3 | 1.3 |

Note: Persons worked at any time during the year.

County Determination: Based on county of employment in which the person made the most money in the year.

N/A: Represents persons with demographic data that is unavailable.

N/A = Nonresidents, individuals for whom demographic data are not available.

Source: Demographics of Persons Working in Wyoming by County, Industry, Age, & Gender, 2000-2017.
Research & Planning, Wyoming Department of Workforce Services.

Prepared by M. Moore, Research & Planning, WY DWS, 6/12/18.

Average Earnings by Age and Gender with Place of Work in Big Horn County in 2014

| Gender | Age Group | Number | Age Percent | Gender Percent | Average Annual Wage | Average Quarters Worked | Average Annual Employers |
|--------|-----------|--------|-------------|----------------|---------------------|-------------------------|--------------------------|
| Women | 00-19 | 173 | 7.8 | 0.0 | \$3,525 | 2.4 | 1.4 |
| Women | 20-24 | 190 | 8.5 | 0.0 | \$11,394 | 3.0 | 1.7 |
| Women | 25-34 | 413 | 18.5 | 0.0 | \$20,869 | 3.2 | 1.4 |
| Women | 35-44 | 374 | 16.8 | 0.0 | \$29,024 | 3.6 | 1.4 |
| Women | 45-54 | 454 | 20.4 | 0.0 | \$32,436 | 3.6 | 1.3 |
| Women | 55-64 | 451 | 20.2 | 0.0 | \$29,650 | 3.6 | 1.2 |
| Women | 65-Up | 174 | 7.8 | 0.0 | \$16,056 | 3.3 | 1.1 |
| Women | N/A | 1 | 0.0 | 0.0 | \$6,240 | 1.0 | 1.0 |
| Women | Total | 2,230 | 100.0 | 41.5 | \$23,833 | 3.4 | 1.3 |
| Men | 00-19 | 186 | 6.8 | 0.0 | \$5,040 | 2.3 | 1.3 |
| Men | 20-24 | 285 | 10.4 | 0.0 | \$21,687 | 3.1 | 1.6 |
| Men | 25-34 | 562 | 20.5 | 0.0 | \$36,975 | 3.4 | 1.4 |
| Men | 35-44 | 481 | 17.6 | 0.0 | \$47,771 | 3.6 | 1.3 |
| Men | 45-54 | 506 | 18.5 | 0.0 | \$52,389 | 3.7 | 1.2 |
| Men | 55-64 | 488 | 17.8 | 0.0 | \$48,298 | 3.6 | 1.2 |
| Men | 65-Up | 226 | 8.3 | 0.0 | \$26,784 | 3.3 | 1.2 |
| Men | N/A | 2 | 0.1 | 0.0 | \$28,663 | 2.5 | 1.0 |
| Men | Total | 2,736 | 100.0 | 50.9 | \$39,132 | 3.4 | 1.3 |
| N/A | N/A | 411 | 100.0 | 0.0 | \$17,382 | 2.2 | 1.1 |
| N/A | Total | 411 | 100.0 | 7.6 | \$17,382 | 2.2 | 1.1 |
| Total | 00-19 | 359 | 6.7 | 0.0 | \$4,310 | 2.3 | 1.3 |
| Total | 20-24 | 475 | 8.8 | 0.0 | \$17,570 | 3.0 | 1.6 |
| Total | 25-34 | 975 | 18.1 | 0.0 | \$30,153 | 3.3 | 1.4 |
| Total | 35-44 | 855 | 15.9 | 0.0 | \$39,570 | 3.6 | 1.3 |
| Total | 45-54 | 960 | 17.9 | 0.0 | \$42,953 | 3.6 | 1.2 |
| Total | 55-64 | 939 | 17.5 | 0.0 | \$39,341 | 3.6 | 1.2 |
| Total | 65-Up | 400 | 7.4 | 0.0 | \$22,118 | 3.3 | 1.2 |
| Total | N/A | 414 | 7.7 | 0.0 | \$17,410 | 2.2 | 1.1 |
| Total | Total | 5,377 | 100.0 | 100.0 | \$31,124 | 3.3 | 1.3 |

Note: Persons worked at any time during the year.

County Determination: Based on county of employment in which the person made the most money in the year.

N/A: Represents persons with demographic data that is unavailable.

N/A = Nonresidents, individuals for whom demographic data are not available.

Source: Demographics of Persons Working in Wyoming by County, Industry, Age, & Gender, 2000-2017.
Research & Planning, Wyoming Department of Workforce Services.

Prepared by M. Moore, Research & Planning, WY DWS, 6/12/18.

Average Earnings by Age and Gender with Place of Work in Big Horn County in 2015

| Gender | Age Group | Number | Age Percent | Gender Percent | Average Annual Wage | Average Quarters Worked | Average Annual Employers |
|--------|-----------|--------|-------------|----------------|---------------------|-------------------------|--------------------------|
| Women | 00-19 | 190 | 8.6 | 0.0 | \$3,518 | 2.4 | 1.3 |
| Women | 20-24 | 171 | 7.8 | 0.0 | \$11,794 | 2.9 | 1.5 |
| Women | 25-34 | 389 | 17.7 | 0.0 | \$21,744 | 3.3 | 1.4 |
| Women | 35-44 | 415 | 18.8 | 0.0 | \$28,716 | 3.6 | 1.3 |
| Women | 45-54 | 421 | 19.1 | 0.0 | \$33,578 | 3.6 | 1.3 |
| Women | 55-64 | 426 | 19.3 | 0.0 | \$30,098 | 3.6 | 1.2 |
| Women | 65-Up | 191 | 8.7 | 0.0 | \$16,592 | 3.2 | 1.1 |
| Women | Total | 2,203 | 100.0 | 41.5 | \$24,143 | 3.4 | 1.3 |
| Men | 00-19 | 175 | 6.4 | 0.0 | \$4,748 | 2.3 | 1.3 |
| Men | 20-24 | 277 | 10.2 | 0.0 | \$19,927 | 2.9 | 1.4 |
| Men | 25-34 | 560 | 20.6 | 0.0 | \$37,563 | 3.5 | 1.4 |
| Men | 35-44 | 494 | 18.2 | 0.0 | \$46,882 | 3.6 | 1.3 |
| Men | 45-54 | 510 | 18.8 | 0.0 | \$51,646 | 3.6 | 1.2 |
| Men | 55-64 | 482 | 17.7 | 0.0 | \$48,372 | 3.6 | 1.2 |
| Men | 65-Up | 221 | 8.1 | 0.0 | \$27,931 | 3.3 | 1.1 |
| Men | N/A | 1 | 0.0 | 0.0 | \$29,751 | 3.0 | 1.0 |
| Men | Total | 2,720 | 100.0 | 51.2 | \$39,119 | 3.4 | 1.3 |
| N/A | N/A | 389 | 100.0 | 0.0 | \$15,729 | 2.1 | 1.1 |
| N/A | Total | 389 | 100.0 | 7.3 | \$15,729 | 2.1 | 1.1 |
| Total | 00-19 | 365 | 6.9 | 0.0 | \$4,108 | 2.3 | 1.3 |
| Total | 20-24 | 448 | 8.4 | 0.0 | \$16,822 | 2.9 | 1.5 |
| Total | 25-34 | 949 | 17.9 | 0.0 | \$31,079 | 3.4 | 1.4 |
| Total | 35-44 | 909 | 17.1 | 0.0 | \$38,588 | 3.6 | 1.3 |
| Total | 45-54 | 931 | 17.5 | 0.0 | \$43,476 | 3.6 | 1.3 |
| Total | 55-64 | 908 | 17.1 | 0.0 | \$39,798 | 3.6 | 1.2 |
| Total | 65-Up | 412 | 7.8 | 0.0 | \$22,674 | 3.3 | 1.1 |
| Total | N/A | 390 | 7.3 | 0.0 | \$15,765 | 2.2 | 1.1 |
| Total | Total | 5,312 | 100.0 | 100.0 | \$31,195 | 3.3 | 1.3 |

Note: Persons worked at any time during the year.

County Determination: Based on county of employment in which the person made the most money in the year.

N/A: Represents persons with demographic data that is unavailable.

N/A = Nonresidents, individuals for whom demographic data are not available.

Source: Demographics of Persons Working in Wyoming by County, Industry, Age, & Gender, 2000-2017.
Research & Planning, Wyoming Department of Workforce Services.

Prepared by M. Moore, Research & Planning, WY DWS, 6/12/18.

Average Earnings by Age and Gender with Place of Work in Big Horn County in 2016

| Gender | Age Group | Number | Age Percent | Gender Percent | Average Annual Wage | Average Quarters Worked | Average Annual Employers |
|--------|-----------|--------|-------------|----------------|---------------------|-------------------------|--------------------------|
| Women | 00-19 | 176 | 8.2 | 0.0 | \$3,569 | 2.5 | 1.3 |
| Women | 20-24 | 164 | 7.6 | 0.0 | \$12,659 | 3.1 | 1.5 |
| Women | 25-34 | 402 | 18.6 | 0.0 | \$22,771 | 3.4 | 1.5 |
| Women | 35-44 | 399 | 18.5 | 0.0 | \$29,407 | 3.6 | 1.4 |
| Women | 45-54 | 416 | 19.3 | 0.0 | \$34,769 | 3.7 | 1.3 |
| Women | 55-64 | 405 | 18.8 | 0.0 | \$32,981 | 3.7 | 1.2 |
| Women | 65-Up | 193 | 9.0 | 0.0 | \$16,086 | 3.1 | 1.2 |
| Women | N/A | 1 | 0.0 | 0.0 | \$4,888 | 3.0 | 1.0 |
| Women | Total | 2,156 | 100.0 | 41.5 | \$25,289 | 3.4 | 1.3 |
| Men | 00-19 | 161 | 6.1 | 0.0 | \$5,024 | 2.3 | 1.3 |
| Men | 20-24 | 220 | 8.4 | 0.0 | \$19,130 | 2.9 | 1.4 |
| Men | 25-34 | 574 | 21.9 | 0.0 | \$34,971 | 3.4 | 1.4 |
| Men | 35-44 | 490 | 18.7 | 0.0 | \$46,173 | 3.6 | 1.2 |
| Men | 45-54 | 485 | 18.5 | 0.0 | \$51,842 | 3.7 | 1.2 |
| Men | 55-64 | 472 | 18.0 | 0.0 | \$46,435 | 3.6 | 1.2 |
| Men | 65-Up | 216 | 8.2 | 0.0 | \$28,743 | 3.3 | 1.1 |
| Men | N/A | 1 | 0.0 | 0.0 | \$6,701 | 3.0 | 1.0 |
| Men | Total | 2,619 | 100.0 | 50.4 | \$38,561 | 3.4 | 1.3 |
| N/A | N/A | 420 | 100.0 | 0.0 | \$15,646 | 2.2 | 1.1 |
| N/A | Total | 420 | 100.0 | 8.1 | \$15,646 | 2.2 | 1.1 |
| Total | 00-19 | 337 | 6.5 | 0.0 | \$4,264 | 2.4 | 1.3 |
| Total | 20-24 | 384 | 7.4 | 0.0 | \$16,367 | 3.0 | 1.5 |
| Total | 25-34 | 976 | 18.8 | 0.0 | \$29,946 | 3.4 | 1.4 |
| Total | 35-44 | 889 | 17.1 | 0.0 | \$38,648 | 3.6 | 1.3 |
| Total | 45-54 | 901 | 17.3 | 0.0 | \$43,959 | 3.7 | 1.2 |
| Total | 55-64 | 877 | 16.9 | 0.0 | \$40,222 | 3.6 | 1.2 |
| Total | 65-Up | 409 | 7.9 | 0.0 | \$22,771 | 3.2 | 1.2 |
| Total | N/A | 422 | 8.1 | 0.0 | \$15,599 | 2.2 | 1.1 |
| Total | Total | 5,195 | 100.0 | 100.0 | \$31,200 | 3.3 | 1.3 |

Note: Persons worked at any time during the year.

County Determination: Based on county of employment in which the person made the most money in the year.

N/A: Represents persons with demographic data that is unavailable.

N/A = Nonresidents, individuals for whom demographic data are not available.

Source: Demographics of Persons Working in Wyoming by County, Industry, Age, & Gender, 2000-2017.
Research & Planning, Wyoming Department of Workforce Services.

Prepared by M. Moore, Research & Planning, WY DWS, 6/12/18.

Average Earnings by Age and Gender with Place of Work in Big Horn County in 2017

| Gender | Age Group | Number | Age Percent | Gender Percent | Average Annual Wage | Average Quarters Worked | Average Annual Employers |
|--------|-----------|--------|-------------|----------------|---------------------|-------------------------|--------------------------|
| Women | 00-19 | 172 | 8.2 | 0.0 | \$4,277 | 2.7 | 1.4 |
| Women | 20-24 | 186 | 8.9 | 0.0 | \$12,889 | 3.0 | 1.6 |
| Women | 25-34 | 360 | 17.1 | 0.0 | \$22,955 | 3.4 | 1.5 |
| Women | 35-44 | 407 | 19.4 | 0.0 | \$29,449 | 3.6 | 1.4 |
| Women | 45-54 | 408 | 19.4 | 0.0 | \$36,489 | 3.8 | 1.3 |
| Women | 55-64 | 393 | 18.7 | 0.0 | \$31,905 | 3.7 | 1.2 |
| Women | 65-Up | 175 | 8.3 | 0.0 | \$19,950 | 3.4 | 1.2 |
| Women | Total | 2,101 | 100.0 | 40.5 | \$25,845 | 3.5 | 1.4 |
| Men | 00-19 | 162 | 6.2 | 0.0 | \$4,955 | 2.4 | 1.2 |
| Men | 20-24 | 225 | 8.7 | 0.0 | \$20,709 | 3.0 | 1.6 |
| Men | 25-34 | 522 | 20.1 | 0.0 | \$37,367 | 3.5 | 1.4 |
| Men | 35-44 | 501 | 19.3 | 0.0 | \$46,961 | 3.6 | 1.2 |
| Men | 45-54 | 486 | 18.7 | 0.0 | \$53,684 | 3.6 | 1.2 |
| Men | 55-64 | 478 | 18.4 | 0.0 | \$46,366 | 3.6 | 1.2 |
| Men | 65-Up | 223 | 8.6 | 0.0 | \$32,340 | 3.3 | 1.1 |
| Men | N/A | 1 | 0.0 | 0.0 | \$2,147 | 1.0 | 1.0 |
| Men | Total | 2,598 | 100.0 | 50.1 | \$40,016 | 3.4 | 1.3 |
| N/A | N/A | 485 | 100.0 | 0.0 | \$16,594 | 2.3 | 1.1 |
| N/A | Total | 485 | 100.0 | 9.4 | \$16,594 | 2.3 | 1.1 |
| Total | 00-19 | 334 | 6.4 | 0.0 | \$4,606 | 2.5 | 1.3 |
| Total | 20-24 | 411 | 7.9 | 0.0 | \$17,170 | 3.0 | 1.6 |
| Total | 25-34 | 882 | 17.0 | 0.0 | \$31,485 | 3.4 | 1.4 |
| Total | 35-44 | 908 | 17.5 | 0.0 | \$39,112 | 3.6 | 1.3 |
| Total | 45-54 | 894 | 17.2 | 0.0 | \$45,837 | 3.7 | 1.3 |
| Total | 55-64 | 871 | 16.8 | 0.0 | \$39,841 | 3.6 | 1.2 |
| Total | 65-Up | 398 | 7.7 | 0.0 | \$26,892 | 3.3 | 1.2 |
| Total | N/A | 486 | 9.4 | 0.0 | \$16,565 | 2.3 | 1.1 |
| Total | Total | 5,184 | 100.0 | 100.0 | \$32,082 | 3.3 | 1.3 |

Note: Persons worked at any time during the year.

County Determination: Based on county of employment in which the person made the most money in the year.

N/A: Represents persons with demographic data that is unavailable.

N/A = Nonresidents, individuals for whom demographic data are not available.

Source: Demographics of Persons Working in Wyoming by County, Industry, Age, & Gender, 2000-2017.
Research & Planning, Wyoming Department of Workforce Services.

Prepared by M. Moore, Research & Planning, WY DWS, 6/12/18.