

# Albany County at a Glance, 2017

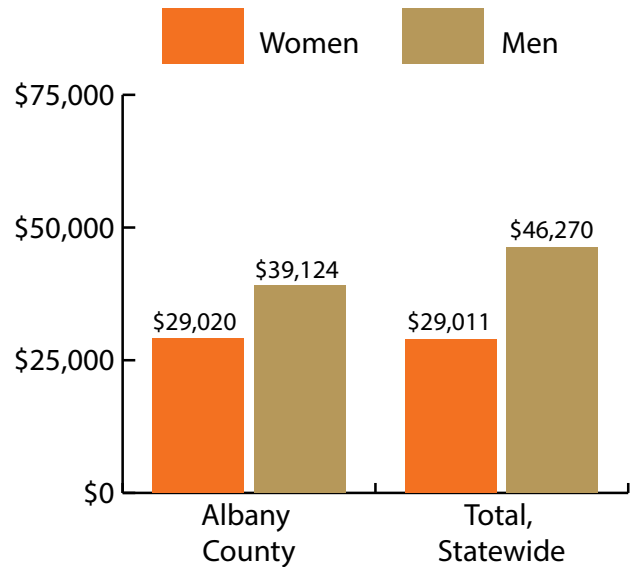
Demographics of Persons Working in Wyoming by County, Industry, Age, & Gender, 2000-2017

**Table: Total Number of Persons Working in Albany County, WY, at Any Time by Gender and Age, 2016-2017**

Gender	2016	2017	Change	
			N	%
Women	8,505	8,297	-208	-2.4
Men	9,335	9,006	-329	-3.5
Nonresidents	1,928	2,135	207	10.7
<b>Total</b>	<b>19,768</b>	<b>19,438</b>	<b>-330</b>	<b>-1.7</b>

Age	2016	2017	Change	
			N	%
00-19	1,031	917	-114	-11.1
20-24	3,502	3,439	-63	-1.8
25-34	4,645	4,430	-215	-4.6
35-44	3,019	2,997	-22	-0.7
45-54	2,418	2,351	-67	-2.8
55-64	2,368	2,313	-55	-2.3
65-Up	853	854	1	0.1
Nonresidents	1,932	2,137	205	10.6
<b>Total</b>	<b>19,768</b>	<b>19,438</b>	<b>-330</b>	<b>-1.7</b>



### Women's Wages as % of Men's Wages

Albany County: 74.2%

Total: 62.7%

Figure: Average Annual Wages by Gender, 2017

Total = 19,438

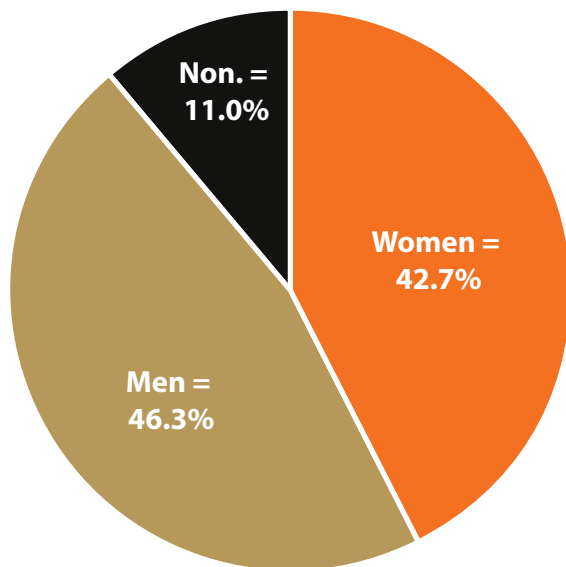


Figure: Persons Working by Gender, 2017

Total = 19,438

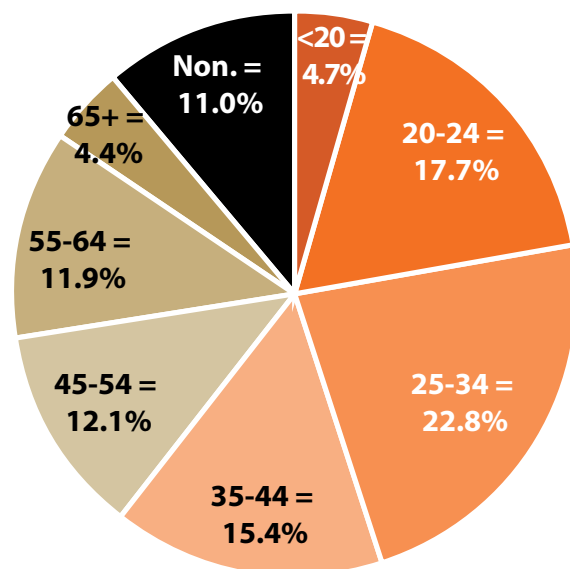


Figure: Persons Working by Age, 2017

Note: Nonresidents are individuals for whom demographic data are not available.

Source: Demographics of Persons Working in Wyoming by County, Industry, Age, & Gender, 2000-2017. Research & Planning, Wyoming Department of Workforce Services. Prepared by M. Moore, Research & Planning, WY DWS, 6/12/18.

# Persons Working in Albany County by Gender and Age, 2000-2017

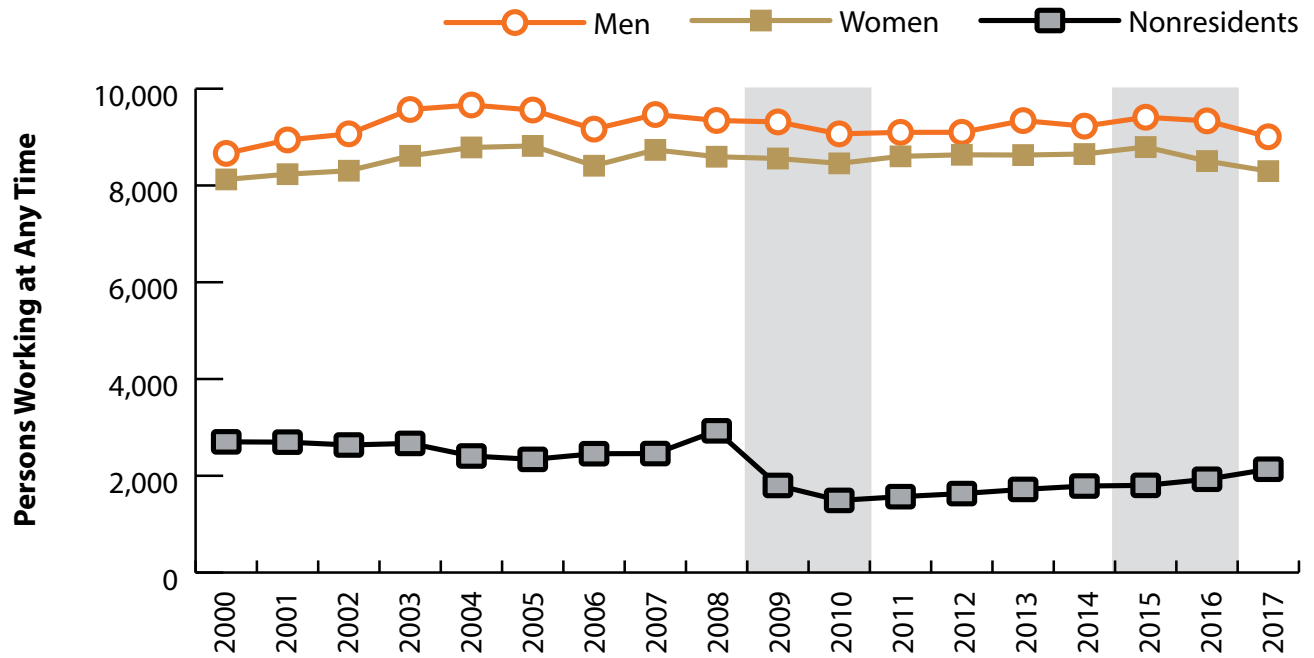


Figure: Persons Working in Albany County at Any Time by Gender, 2000-2017

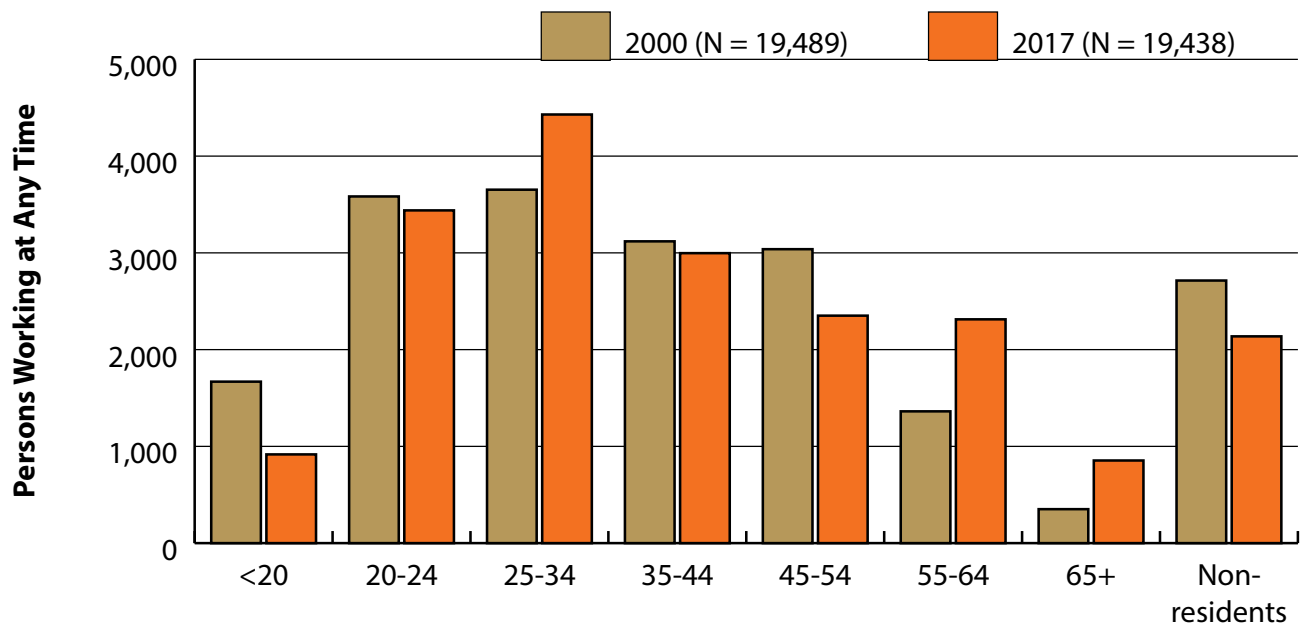


Figure: Persons Working in Albany County at Any Time by Age, 2000-2017

Note: Nonresidents are individuals for whom demographic data are not available.  
 Shaded areas indicate periods of economic downturn: 2009Q1-2010Q1 and 2015Q2-2016Q4.  
 Source: Demographics of Persons Working in Wyoming by County, Industry, Age, & Gender, 2000-2017. Research & Planning, Wyoming Department of Workforce Services. Prepared by M. Moore, Research & Planning, WY DWS, 6/12/18.

# Wages for Persons Working in Albany County by Gender, 2000-2017

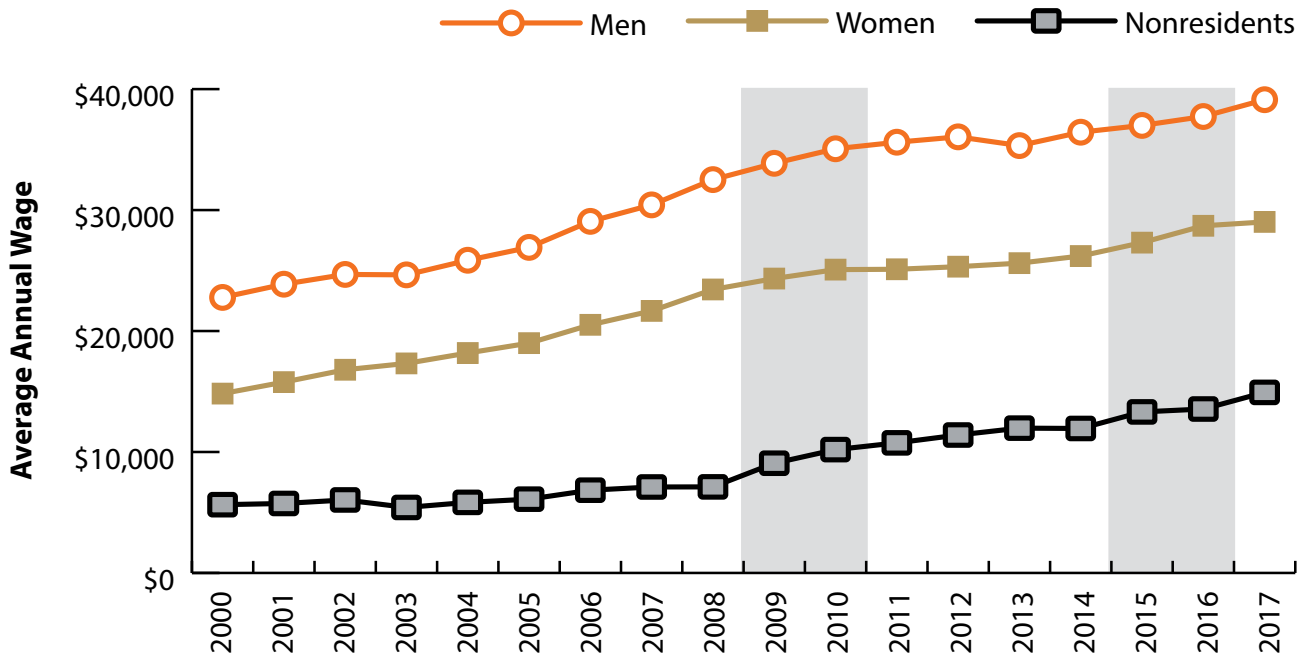


Figure: Average Annual Wage for Persons Working in Albany County at Any Time by Age, 2000-2017

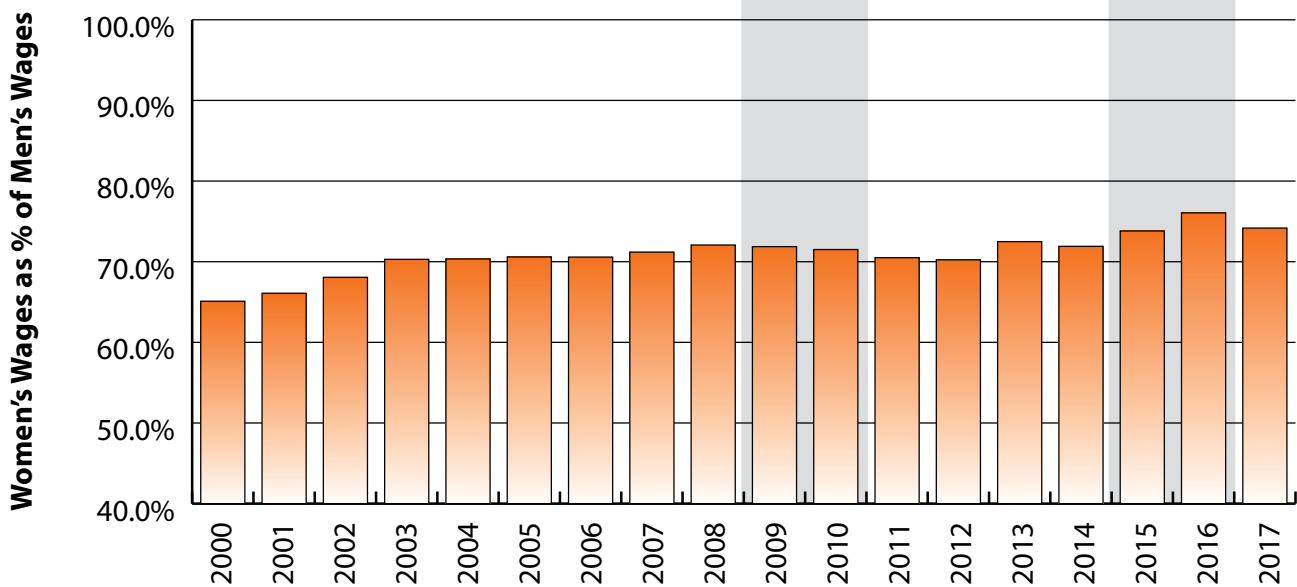


Figure: Women's Average Annual Wages as a Percent of Men's Wages for Persons Working in Albany County at Any Time by Age, 2000-2017

Note: Nonresidents are individuals for whom demographic data are not available.  
 Shaded areas indicate periods of economic downturn: 2009Q1-2010Q1 and 2015Q2-2016Q4.  
 Source: Demographics of Persons Working in Wyoming by County, Industry, Age, & Gender, 2000-2017. Research & Planning, Wyoming Department of Workforce Services. Prepared by M. Moore, Research & Planning, WY DWS, 6/12/18.

### Average Earnings by Age and Gender with Place of Work in Albany County in 2000

Gender	Age Group	Number	Age Percent	Gender Percent	Average Annual Wage	Average Quarters Worked	Average Annual Employers
Women	00-19	805	9.9	0.0	\$2,821	2.6	1.7
Women	20-24	1,794	22.1	0.0	\$6,103	2.9	1.9
Women	25-34	1,684	20.7	0.0	\$14,067	3.2	1.5
Women	35-44	1,544	19.0	0.0	\$20,373	3.5	1.4
Women	45-54	1,501	18.5	0.0	\$24,332	3.6	1.3
Women	55-64	637	7.8	0.0	\$21,674	3.6	1.2
Women	65-Up	152	1.9	0.0	\$10,986	3.0	1.1
Women	N/A	8	0.1	0.0	\$14,763	2.8	1.1
Women	Total	8,125	100.0	41.7	\$14,828	3.2	1.5
Men	00-19	864	10.0	0.0	\$2,859	2.4	1.6
Men	20-24	1,789	20.7	0.0	\$7,394	2.8	1.8
Men	25-34	1,969	22.7	0.0	\$18,153	3.2	1.5
Men	35-44	1,575	18.2	0.0	\$31,525	3.5	1.3
Men	45-54	1,537	17.7	0.0	\$38,943	3.6	1.2
Men	55-64	725	8.4	0.0	\$44,476	3.6	1.2
Men	65-Up	199	2.3	0.0	\$19,748	3.0	1.1
Men	N/A	5	0.1	0.0	\$40,562	3.4	1.0
Men	Total	8,663	100.0	44.5	\$22,778	3.2	1.5
N/A	N/A	2,701	100.0	0.0	\$5,643	1.7	1.2
N/A	Total	2,701	100.0	13.9	\$5,643	1.7	1.2
Total	00-19	1,669	8.6	0.0	\$2,841	2.5	1.7
Total	20-24	3,583	18.4	0.0	\$6,747	2.9	1.8
Total	25-34	3,653	18.7	0.0	\$16,269	3.2	1.5
Total	35-44	3,119	16.0	0.0	\$26,004	3.5	1.4
Total	45-54	3,038	15.6	0.0	\$31,724	3.6	1.3
Total	55-64	1,362	7.0	0.0	\$33,812	3.6	1.2
Total	65-Up	351	1.8	0.0	\$15,954	3.0	1.1
Total	N/A	2,714	13.9	0.0	\$5,734	1.7	1.2
Total	Total	19,489	100.0	100.0	\$17,089	3.0	1.4

Note: Persons worked at any time during the year.

County Determination: Based on county of employment in which the person made the most money in the year.

N/A: Represents persons with demographic data that is unavailable.

N/A = Nonresidents, individuals for whom demographic data are not available.

Source: Demographics of Persons Working in Wyoming by County, Industry, Age, & Gender, 2000-2017.

Research & Planning, Wyoming Department of Workforce Services.

Prepared by M. Moore, Research & Planning, WY DWS, 6/12/18.

### Average Earnings by Age and Gender with Place of Work in Albany County in 2001

Gender	Age Group	Number	Age Percent	Gender Percent	Average Annual Wage	Average Quarters Worked	Average Annual Employers
Women	00-19	746	9.1	0.0	\$2,888	2.5	1.7
Women	20-24	1,882	22.9	0.0	\$6,692	2.9	1.8
Women	25-34	1,680	20.4	0.0	\$15,117	3.2	1.5
Women	35-44	1,499	18.2	0.0	\$21,270	3.5	1.4
Women	45-54	1,562	19.0	0.0	\$25,436	3.6	1.3
Women	55-64	703	8.5	0.0	\$22,942	3.6	1.2
Women	65-Up	156	1.9	0.0	\$12,207	3.1	1.1
Women	N/A	5	0.1	0.0	\$19,812	3.8	1.2
Women	Total	8,233	100.0	41.4	\$15,777	3.2	1.5
Men	00-19	902	10.1	0.0	\$2,808	2.4	1.6
Men	20-24	1,851	20.7	0.0	\$7,826	2.8	1.8
Men	25-34	2,003	22.4	0.0	\$19,544	3.2	1.5
Men	35-44	1,588	17.8	0.0	\$34,269	3.4	1.3
Men	45-54	1,582	17.7	0.0	\$39,620	3.6	1.2
Men	55-64	800	8.9	0.0	\$44,667	3.5	1.2
Men	65-Up	210	2.3	0.0	\$20,582	3.1	1.2
Men	N/A	5	0.1	0.0	\$21,675	2.8	1.0
Men	Total	8,941	100.0	45.0	\$23,871	3.2	1.4
N/A	N/A	2,695	100.0	0.0	\$5,744	1.7	1.2
N/A	Total	2,695	100.0	13.6	\$5,744	1.7	1.2
Total	00-19	1,648	8.3	0.0	\$2,844	2.5	1.6
Total	20-24	3,733	18.8	0.0	\$7,254	2.8	1.8
Total	25-34	3,683	18.5	0.0	\$17,525	3.2	1.5
Total	35-44	3,087	15.5	0.0	\$27,956	3.4	1.4
Total	45-54	3,144	15.8	0.0	\$32,573	3.6	1.2
Total	55-64	1,503	7.6	0.0	\$34,506	3.5	1.2
Total	65-Up	366	1.8	0.0	\$17,013	3.1	1.2
Total	N/A	2,705	13.6	0.0	\$5,800	1.7	1.2
Total	Total	19,869	100.0	100.0	\$18,058	3.0	1.4

Note: Persons worked at any time during the year.

County Determination: Based on county of employment in which the person made the most money in the year.

N/A: Represents persons with demographic data that is unavailable.

N/A = Nonresidents, individuals for whom demographic data are not available.

Source: Demographics of Persons Working in Wyoming by County, Industry, Age, & Gender, 2000-2017.

Research & Planning, Wyoming Department of Workforce Services.

Prepared by M. Moore, Research & Planning, WY DWS, 6/12/18.

### Average Earnings by Age and Gender with Place of Work in Albany County in 2002

Gender	Age Group	Number	Age Percent	Gender Percent	Average Annual Wage	Average Quarters Worked	Average Annual Employers
Women	00-19	722	8.7	0.0	\$3,196	2.6	1.7
Women	20-24	1,907	23.0	0.0	\$6,933	2.9	1.7
Women	25-34	1,749	21.1	0.0	\$15,863	3.2	1.4
Women	35-44	1,413	17.0	0.0	\$22,827	3.5	1.4
Women	45-54	1,596	19.2	0.0	\$26,991	3.6	1.3
Women	55-64	752	9.1	0.0	\$25,087	3.6	1.2
Women	65-Up	161	1.9	0.0	\$12,042	3.0	1.1
Women	N/A	5	0.1	0.0	\$18,966	3.6	1.0
Women	Total	8,305	100.0	41.5	\$16,798	3.2	1.4
Men	00-19	848	9.4	0.0	\$2,936	2.4	1.5
Men	20-24	1,887	20.8	0.0	\$7,919	2.8	1.7
Men	25-34	2,170	23.9	0.0	\$19,269	3.1	1.4
Men	35-44	1,542	17.0	0.0	\$34,633	3.5	1.3
Men	45-54	1,556	17.2	0.0	\$42,727	3.6	1.2
Men	55-64	838	9.2	0.0	\$46,838	3.6	1.1
Men	65-Up	221	2.4	0.0	\$24,097	3.2	1.1
Men	N/A	5	0.1	0.0	\$9,945	2.4	1.0
Men	Total	9,067	100.0	45.3	\$24,679	3.2	1.4
N/A	N/A	2,636	100.0	0.0	\$6,035	1.8	1.2
N/A	Total	2,636	100.0	13.2	\$6,035	1.8	1.2
Total	00-19	1,570	7.8	0.0	\$3,055	2.5	1.6
Total	20-24	3,794	19.0	0.0	\$7,424	2.8	1.7
Total	25-34	3,919	19.6	0.0	\$17,749	3.2	1.4
Total	35-44	2,955	14.8	0.0	\$28,988	3.5	1.3
Total	45-54	3,152	15.8	0.0	\$34,759	3.6	1.2
Total	55-64	1,590	7.9	0.0	\$36,551	3.6	1.2
Total	65-Up	382	1.9	0.0	\$19,016	3.1	1.1
Total	N/A	2,646	13.2	0.0	\$6,067	1.8	1.2
Total	Total	20,008	100.0	100.0	\$18,951	3.0	1.4

Note: Persons worked at any time during the year.

County Determination: Based on county of employment in which the person made the most money in the year.

N/A: Represents persons with demographic data that is unavailable.

N/A = Nonresidents, individuals for whom demographic data are not available.

Source: Demographics of Persons Working in Wyoming by County, Industry, Age, & Gender, 2000-2017.

Research & Planning, Wyoming Department of Workforce Services.

Prepared by M. Moore, Research & Planning, WY DWS, 6/12/18.

### Average Earnings by Age and Gender with Place of Work in Albany County in 2003

Gender	Age Group	Number	Age Percent	Gender Percent	Average Annual Wage	Average Quarters Worked	Average Annual Employers
Women	00-19	705	8.2	0.0	\$2,795	2.5	1.7
Women	20-24	2,014	23.4	0.0	\$6,970	2.8	1.7
Women	25-34	1,885	21.9	0.0	\$15,961	3.1	1.5
Women	35-44	1,385	16.1	0.0	\$23,919	3.5	1.3
Women	45-54	1,643	19.1	0.0	\$28,318	3.6	1.3
Women	55-64	787	9.1	0.0	\$26,837	3.6	1.2
Women	65-Up	187	2.2	0.0	\$11,875	2.9	1.0
Women	N/A	7	0.1	0.0	\$16,042	3.3	1.0
Women	Total	8,613	100.0	41.3	\$17,323	3.2	1.4
Men	00-19	844	8.8	0.0	\$2,931	2.3	1.5
Men	20-24	2,043	21.3	0.0	\$7,799	2.7	1.6
Men	25-34	2,368	24.7	0.0	\$19,183	3.1	1.4
Men	35-44	1,581	16.5	0.0	\$35,124	3.4	1.2
Men	45-54	1,595	16.7	0.0	\$43,773	3.6	1.2
Men	55-64	882	9.2	0.0	\$46,018	3.6	1.2
Men	65-Up	250	2.6	0.0	\$23,989	3.0	1.1
Men	N/A	7	0.1	0.0	\$9,919	2.9	1.1
Men	Total	9,570	100.0	45.9	\$24,643	3.1	1.4
N/A	N/A	2,669	100.0	0.0	\$5,415	1.7	1.1
N/A	Total	2,669	100.0	12.8	\$5,415	1.7	1.1
Total	00-19	1,549	7.4	0.0	\$2,869	2.4	1.6
Total	20-24	4,057	19.5	0.0	\$7,388	2.8	1.7
Total	25-34	4,253	20.4	0.0	\$17,755	3.1	1.4
Total	35-44	2,966	14.2	0.0	\$29,892	3.4	1.3
Total	45-54	3,238	15.5	0.0	\$35,931	3.6	1.2
Total	55-64	1,669	8.0	0.0	\$36,973	3.6	1.2
Total	65-Up	437	2.1	0.0	\$18,805	3.0	1.1
Total	N/A	2,683	12.9	0.0	\$5,455	1.7	1.1
Total	Total	20,852	100.0	100.0	\$19,159	3.0	1.4

Note: Persons worked at any time during the year.

County Determination: Based on county of employment in which the person made the most money in the year.

N/A: Represents persons with demographic data that is unavailable.

N/A = Nonresidents, individuals for whom demographic data are not available.

Source: Demographics of Persons Working in Wyoming by County, Industry, Age, & Gender, 2000-2017.

Research & Planning, Wyoming Department of Workforce Services.

Prepared by M. Moore, Research & Planning, WY DWS, 6/12/18.

### Average Earnings by Age and Gender with Place of Work in Albany County in 2004

Gender	Age Group	Number	Age Percent	Gender Percent	Average Annual Wage	Average Quarters Worked	Average Annual Employers
Women	00-19	689	7.8	0.0	\$3,046	2.5	1.7
Women	20-24	1,976	22.5	0.0	\$7,647	3.0	1.7
Women	25-34	2,019	23.0	0.0	\$16,740	3.3	1.5
Women	35-44	1,376	15.7	0.0	\$24,490	3.5	1.3
Women	45-54	1,659	18.9	0.0	\$29,119	3.6	1.2
Women	55-64	864	9.8	0.0	\$27,950	3.6	1.2
Women	65-Up	195	2.2	0.0	\$12,645	3.4	1.1
Women	N/A	8	0.1	0.0	\$15,853	3.4	1.1
Women	Total	8,786	100.0	42.1	\$18,183	3.3	1.4
Men	00-19	777	8.0	0.0	\$2,790	2.3	1.5
Men	20-24	2,060	21.3	0.0	\$8,075	2.9	1.6
Men	25-34	2,398	24.8	0.0	\$19,825	3.2	1.4
Men	35-44	1,589	16.4	0.0	\$37,915	3.5	1.3
Men	45-54	1,603	16.6	0.0	\$44,209	3.6	1.2
Men	55-64	970	10.0	0.0	\$46,676	3.6	1.2
Men	65-Up	259	2.7	0.0	\$26,711	3.3	1.1
Men	N/A	7	0.1	0.0	\$20,864	2.4	1.1
Men	Total	9,663	100.0	46.3	\$25,851	3.2	1.4
N/A	N/A	2,409	100.0	0.0	\$5,834	1.9	1.1
N/A	Total	2,409	100.0	11.5	\$5,834	1.9	1.1
Total	00-19	1,466	7.0	0.0	\$2,911	2.4	1.6
Total	20-24	4,036	19.3	0.0	\$7,866	3.0	1.7
Total	25-34	4,417	21.2	0.0	\$18,415	3.2	1.4
Total	35-44	2,965	14.2	0.0	\$31,685	3.5	1.3
Total	45-54	3,262	15.6	0.0	\$36,534	3.6	1.2
Total	55-64	1,834	8.8	0.0	\$37,854	3.6	1.2
Total	65-Up	454	2.2	0.0	\$20,669	3.3	1.1
Total	N/A	2,424	11.6	0.0	\$5,911	1.9	1.1
Total	Total	20,858	100.0	100.0	\$20,309	3.1	1.4

Note: Persons worked at any time during the year.

County Determination: Based on county of employment in which the person made the most money in the year.

N/A: Represents persons with demographic data that is unavailable.

N/A = Nonresidents, individuals for whom demographic data are not available.

Source: Demographics of Persons Working in Wyoming by County, Industry, Age, & Gender, 2000-2017.

Research & Planning, Wyoming Department of Workforce Services.

Prepared by M. Moore, Research & Planning, WY DWS, 6/12/18.



### Average Earnings by Age and Gender with Place of Work in Albany County in 2005

Gender	Age Group	Number	Age Percent	Gender Percent	Average Annual Wage	Average Quarters Worked	Average Annual Employers
Women	00-19	688	7.8	0.0	\$3,219	2.5	1.7
Women	20-24	2,015	22.9	0.0	\$7,627	3.0	1.7
Women	25-34	2,009	22.8	0.0	\$17,273	3.2	1.5
Women	35-44	1,313	14.9	0.0	\$26,356	3.5	1.4
Women	45-54	1,657	18.8	0.0	\$30,526	3.7	1.3
Women	55-64	910	10.3	0.0	\$29,686	3.7	1.2
Women	65-Up	218	2.5	0.0	\$13,325	3.3	1.1
Women	N/A	7	0.1	0.0	\$17,540	3.3	1.0
Women	Total	8,817	100.0	42.6	\$18,999	3.3	1.5
Men	00-19	737	7.7	0.0	\$3,147	2.4	1.5
Men	20-24	2,030	21.2	0.0	\$8,295	2.8	1.6
Men	25-34	2,364	24.7	0.0	\$20,325	3.2	1.4
Men	35-44	1,574	16.5	0.0	\$39,159	3.4	1.3
Men	45-54	1,602	16.8	0.0	\$45,059	3.6	1.2
Men	55-64	982	10.3	0.0	\$49,461	3.7	1.1
Men	65-Up	268	2.8	0.0	\$28,575	3.4	1.1
Men	N/A	2	0.0	0.0	\$13,503	2.5	1.0
Men	Total	9,559	100.0	46.1	\$26,915	3.2	1.4
N/A	N/A	2,339	100.0	0.0	\$6,100	1.9	1.2
N/A	Total	2,339	100.0	11.3	\$6,100	1.9	1.2
Total	00-19	1,425	6.9	0.0	\$3,182	2.5	1.6
Total	20-24	4,045	19.5	0.0	\$7,962	2.9	1.7
Total	25-34	4,373	21.1	0.0	\$18,923	3.2	1.5
Total	35-44	2,887	13.9	0.0	\$33,336	3.5	1.3
Total	45-54	3,259	15.7	0.0	\$37,670	3.6	1.2
Total	55-64	1,892	9.1	0.0	\$39,950	3.7	1.2
Total	65-Up	486	2.3	0.0	\$21,734	3.4	1.1
Total	N/A	2,348	11.3	0.0	\$6,140	1.9	1.2
Total	Total	20,715	100.0	100.0	\$21,195	3.1	1.4

Note: Persons worked at any time during the year.

County Determination: Based on county of employment in which the person made the most money in the year.

N/A: Represents persons with demographic data that is unavailable.

N/A = Nonresidents, individuals for whom demographic data are not available.

Source: Demographics of Persons Working in Wyoming by County, Industry, Age, & Gender, 2000-2017.

Research & Planning, Wyoming Department of Workforce Services.

Prepared by M. Moore, Research & Planning, WY DWS, 6/12/18.

### Average Earnings by Age and Gender with Place of Work in Albany County in 2006

Gender	Age Group	Number	Age Percent	Gender Percent	Average Annual Wage	Average Quarters Worked	Average Annual Employers
Women	00-19	665	7.9	0.0	\$3,231	2.5	1.7
Women	20-24	1,813	21.6	0.0	\$8,208	3.0	1.7
Women	25-34	1,830	21.8	0.0	\$19,179	3.3	1.5
Women	35-44	1,270	15.1	0.0	\$28,050	3.5	1.4
Women	45-54	1,632	19.4	0.0	\$31,619	3.6	1.3
Women	55-64	993	11.8	0.0	\$30,127	3.6	1.2
Women	65-Up	197	2.3	0.0	\$15,307	3.3	1.1
Women	N/A	8	0.1	0.0	\$23,404	3.1	1.0
Women	Total	8,408	100.0	42.0	\$20,513	3.3	1.5
Men	00-19	776	8.5	0.0	\$3,342	2.4	1.6
Men	20-24	1,835	20.0	0.0	\$8,938	2.8	1.6
Men	25-34	2,127	23.2	0.0	\$23,408	3.3	1.5
Men	35-44	1,475	16.1	0.0	\$43,414	3.5	1.3
Men	45-54	1,589	17.3	0.0	\$45,249	3.6	1.2
Men	55-64	1,051	11.5	0.0	\$48,197	3.6	1.1
Men	65-Up	305	3.3	0.0	\$35,766	3.4	1.1
Men	N/A	6	0.1	0.0	\$12,576	1.7	1.0
Men	Total	9,164	100.0	45.8	\$29,066	3.2	1.4
N/A	N/A	2,456	100.0	0.0	\$6,842	1.9	1.2
N/A	Total	2,456	100.0	12.3	\$6,842	1.9	1.2
Total	00-19	1,441	7.2	0.0	\$3,291	2.4	1.7
Total	20-24	3,648	18.2	0.0	\$8,575	2.9	1.6
Total	25-34	3,957	19.8	0.0	\$21,452	3.3	1.5
Total	35-44	2,745	13.7	0.0	\$36,306	3.5	1.3
Total	45-54	3,221	16.1	0.0	\$38,343	3.6	1.3
Total	55-64	2,044	10.2	0.0	\$39,419	3.6	1.2
Total	65-Up	502	2.5	0.0	\$27,737	3.3	1.1
Total	N/A	2,470	12.3	0.0	\$6,910	1.9	1.2
Total	Total	20,028	100.0	100.0	\$22,750	3.1	1.4

Note: Persons worked at any time during the year.

County Determination: Based on county of employment in which the person made the most money in the year.

N/A: Represents persons with demographic data that is unavailable.

N/A = Nonresidents, individuals for whom demographic data are not available.

Source: Demographics of Persons Working in Wyoming by County, Industry, Age, & Gender, 2000-2017.  
Research & Planning, Wyoming Department of Workforce Services.

Prepared by M. Moore, Research & Planning, WY DWS, 6/12/18.

### Average Earnings by Age and Gender with Place of Work in Albany County in 2007

Gender	Age Group	Number	Age Percent	Gender Percent	Average Annual Wage	Average Quarters Worked	Average Annual Employers
Women	00-19	701	8.0	0.0	\$3,186	2.5	1.8
Women	20-24	1,926	22.0	0.0	\$8,688	2.9	1.7
Women	25-34	1,877	21.5	0.0	\$20,644	3.2	1.5
Women	35-44	1,298	14.9	0.0	\$29,031	3.5	1.4
Women	45-54	1,612	18.5	0.0	\$33,941	3.6	1.3
Women	55-64	1,076	12.3	0.0	\$32,697	3.6	1.2
Women	65-Up	237	2.7	0.0	\$15,558	3.2	1.2
Women	N/A	8	0.1	0.0	\$30,448	2.9	1.0
Women	Total	8,735	100.0	42.3	\$21,663	3.3	1.5
Men	00-19	820	8.7	0.0	\$3,611	2.4	1.7
Men	20-24	1,821	19.2	0.0	\$9,653	2.8	1.7
Men	25-34	2,285	24.1	0.0	\$25,108	3.2	1.5
Men	35-44	1,492	15.8	0.0	\$43,982	3.4	1.3
Men	45-54	1,563	16.5	0.0	\$47,719	3.5	1.2
Men	55-64	1,143	12.1	0.0	\$49,809	3.6	1.2
Men	65-Up	340	3.6	0.0	\$38,038	3.2	1.1
Men	N/A	2	0.0	0.0	\$26,113	2.5	1.0
Men	Total	9,466	100.0	45.8	\$30,428	3.2	1.4
N/A	N/A	2,459	100.0	0.0	\$7,107	1.9	1.2
N/A	Total	2,459	100.0	11.9	\$7,107	1.9	1.2
Total	00-19	1,521	7.4	0.0	\$3,415	2.5	1.7
Total	20-24	3,747	18.1	0.0	\$9,157	2.9	1.7
Total	25-34	4,162	20.1	0.0	\$23,095	3.2	1.5
Total	35-44	2,790	13.5	0.0	\$37,026	3.5	1.3
Total	45-54	3,175	15.4	0.0	\$40,724	3.6	1.3
Total	55-64	2,219	10.7	0.0	\$41,512	3.6	1.2
Total	65-Up	577	2.8	0.0	\$28,805	3.2	1.1
Total	N/A	2,469	12.0	0.0	\$7,198	1.9	1.2
Total	Total	20,660	100.0	100.0	\$23,947	3.1	1.4

Note: Persons worked at any time during the year.

County Determination: Based on county of employment in which the person made the most money in the year.

N/A: Represents persons with demographic data that is unavailable.

N/A = Nonresidents, individuals for whom demographic data are not available.

Source: Demographics of Persons Working in Wyoming by County, Industry, Age, & Gender, 2000-2017.  
Research & Planning, Wyoming Department of Workforce Services.

Prepared by M. Moore, Research & Planning, WY DWS, 6/12/18.

### Average Earnings by Age and Gender with Place of Work in Albany County in 2008

Gender	Age Group	Number	Age Percent	Gender Percent	Average Annual Wage	Average Quarters Worked	Average Annual Employers
Women	00-19	657	7.6	0.0	\$3,385	2.6	1.7
Women	20-24	1,844	21.5	0.0	\$9,241	3.0	1.6
Women	25-34	1,885	21.9	0.0	\$22,723	3.3	1.4
Women	35-44	1,273	14.8	0.0	\$30,666	3.5	1.4
Women	45-54	1,552	18.1	0.0	\$35,951	3.7	1.3
Women	55-64	1,117	13.0	0.0	\$35,224	3.7	1.2
Women	65-Up	260	3.0	0.0	\$18,806	3.4	1.2
Women	N/A	6	0.1	0.0	\$40,903	3.7	1.0
Women	Total	8,594	100.0	41.2	\$23,436	3.3	1.4
Men	00-19	701	7.5	0.0	\$3,987	2.5	1.5
Men	20-24	1,759	18.8	0.0	\$10,225	2.8	1.6
Men	25-34	2,340	25.0	0.0	\$26,389	3.3	1.4
Men	35-44	1,509	16.2	0.0	\$46,217	3.4	1.2
Men	45-54	1,529	16.4	0.0	\$50,160	3.5	1.2
Men	55-64	1,171	12.5	0.0	\$53,083	3.6	1.1
Men	65-Up	329	3.5	0.0	\$38,333	3.3	1.1
Men	N/A	5	0.1	0.0	\$15,115	2.4	1.0
Men	Total	9,343	100.0	44.8	\$32,518	3.3	1.4
N/A	N/A	2,929	100.0	0.0	\$7,115	1.7	1.1
N/A	Total	2,929	100.0	14.0	\$7,115	1.7	1.1
Total	00-19	1,358	6.5	0.0	\$3,696	2.5	1.6
Total	20-24	3,603	17.3	0.0	\$9,721	2.9	1.6
Total	25-34	4,225	20.2	0.0	\$24,753	3.3	1.4
Total	35-44	2,782	13.3	0.0	\$39,101	3.5	1.3
Total	45-54	3,081	14.8	0.0	\$43,003	3.6	1.3
Total	55-64	2,288	11.0	0.0	\$44,364	3.7	1.2
Total	65-Up	589	2.8	0.0	\$29,713	3.3	1.1
Total	N/A	2,940	14.1	0.0	\$7,198	1.7	1.1
Total	Total	20,866	100.0	100.0	\$25,212	3.1	1.4

Note: Persons worked at any time during the year.

County Determination: Based on county of employment in which the person made the most money in the year.

N/A: Represents persons with demographic data that is unavailable.

N/A = Nonresidents, individuals for whom demographic data are not available.

Source: Demographics of Persons Working in Wyoming by County, Industry, Age, & Gender, 2000-2017.

Research & Planning, Wyoming Department of Workforce Services.

Prepared by M. Moore, Research & Planning, WY DWS, 6/12/18.

### Average Earnings by Age and Gender with Place of Work in Albany County in 2009

Gender	Age Group	Number	Age Percent	Gender Percent	Average Annual Wage	Average Quarters Worked	Average Annual Employers
Women	00-19	557	6.5	0.0	\$3,538	2.6	1.5
Women	20-24	1,842	21.5	0.0	\$9,064	3.0	1.6
Women	25-34	1,975	23.1	0.0	\$22,843	3.3	1.4
Women	35-44	1,258	14.7	0.0	\$32,512	3.6	1.3
Women	45-54	1,465	17.1	0.0	\$36,726	3.7	1.2
Women	55-64	1,182	13.8	0.0	\$37,729	3.7	1.2
Women	65-Up	272	3.2	0.0	\$18,358	3.4	1.1
Women	N/A	6	0.1	0.0	\$30,667	3.0	1.0
Women	Total	8,557	100.0	43.5	\$24,338	3.4	1.3
Men	00-19	545	5.9	0.0	\$3,913	2.6	1.4
Men	20-24	1,765	19.0	0.0	\$10,109	2.9	1.5
Men	25-34	2,419	26.0	0.0	\$25,115	3.3	1.3
Men	35-44	1,508	16.2	0.0	\$47,064	3.5	1.2
Men	45-54	1,499	16.1	0.0	\$54,934	3.6	1.1
Men	55-64	1,218	13.1	0.0	\$57,275	3.7	1.1
Men	65-Up	354	3.8	0.0	\$32,460	3.3	1.1
Men	N/A	5	0.1	0.0	\$17,942	2.6	1.0
Men	Total	9,313	100.0	47.3	\$33,865	3.3	1.3
N/A	N/A	1,800	100.0	0.0	\$9,071	2.0	1.1
N/A	Total	1,800	100.0	9.2	\$9,071	2.0	1.1
Total	00-19	1,102	5.6	0.0	\$3,723	2.6	1.4
Total	20-24	3,607	18.3	0.0	\$9,575	2.9	1.5
Total	25-34	4,394	22.3	0.0	\$24,094	3.3	1.4
Total	35-44	2,766	14.1	0.0	\$40,446	3.5	1.2
Total	45-54	2,964	15.1	0.0	\$45,934	3.6	1.2
Total	55-64	2,400	12.2	0.0	\$47,648	3.7	1.1
Total	65-Up	626	3.2	0.0	\$26,333	3.4	1.1
Total	N/A	1,811	9.2	0.0	\$9,167	2.0	1.1
Total	Total	19,670	100.0	100.0	\$27,452	3.2	1.3

Note: Persons worked at any time during the year.

County Determination: Based on county of employment in which the person made the most money in the year.

N/A: Represents persons with demographic data that is unavailable.

N/A = Nonresidents, individuals for whom demographic data are not available.

Source: Demographics of Persons Working in Wyoming by County, Industry, Age, & Gender, 2000-2017.

Research & Planning, Wyoming Department of Workforce Services.

Prepared by M. Moore, Research & Planning, WY DWS, 6/12/18.

### Average Earnings by Age and Gender with Place of Work in Albany County in 2010

Gender	Age Group	Number	Age Percent	Gender Percent	Average Annual Wage	Average Quarters Worked	Average Annual Employers
Women	00-19	502	5.9	0.0	\$3,631	2.5	1.4
Women	20-24	1,844	21.8	0.0	\$8,666	3.0	1.6
Women	25-34	1,995	23.6	0.0	\$23,775	3.3	1.4
Women	35-44	1,243	14.7	0.0	\$33,837	3.6	1.3
Women	45-54	1,405	16.6	0.0	\$37,703	3.7	1.2
Women	55-64	1,187	14.0	0.0	\$39,071	3.7	1.1
Women	65-Up	275	3.3	0.0	\$19,286	3.4	1.1
Women	N/A	6	0.1	0.0	\$21,100	2.8	1.0
Women	Total	8,457	100.0	44.5	\$25,077	3.4	1.3
Men	00-19	476	5.3	0.0	\$4,044	2.5	1.4
Men	20-24	1,645	18.1	0.0	\$9,400	2.8	1.5
Men	25-34	2,505	27.6	0.0	\$25,541	3.3	1.3
Men	35-44	1,429	15.8	0.0	\$50,050	3.6	1.2
Men	45-54	1,382	15.2	0.0	\$56,940	3.7	1.2
Men	55-64	1,256	13.9	0.0	\$57,229	3.6	1.1
Men	65-Up	369	4.1	0.0	\$38,976	3.4	1.1
Men	N/A	4	0.0	0.0	\$19,843	2.3	1.0
Men	Total	9,066	100.0	47.7	\$35,067	3.3	1.3
N/A	N/A	1,491	100.0	0.0	\$10,197	2.1	1.1
N/A	Total	1,491	100.0	7.8	\$10,197	2.1	1.1
Total	00-19	978	5.1	0.0	\$3,832	2.5	1.4
Total	20-24	3,489	18.3	0.0	\$9,012	2.9	1.5
Total	25-34	4,500	23.7	0.0	\$24,758	3.3	1.4
Total	35-44	2,672	14.1	0.0	\$42,508	3.6	1.2
Total	45-54	2,787	14.7	0.0	\$47,242	3.7	1.2
Total	55-64	2,443	12.8	0.0	\$48,407	3.7	1.1
Total	65-Up	644	3.4	0.0	\$30,568	3.4	1.1
Total	N/A	1,501	7.9	0.0	\$10,266	2.1	1.1
Total	Total	19,014	100.0	100.0	\$28,673	3.2	1.3

Note: Persons worked at any time during the year.

County Determination: Based on county of employment in which the person made the most money in the year.

N/A: Represents persons with demographic data that is unavailable.

N/A = Nonresidents, individuals for whom demographic data are not available.

Source: Demographics of Persons Working in Wyoming by County, Industry, Age, & Gender, 2000-2017.

Research & Planning, Wyoming Department of Workforce Services.

Prepared by M. Moore, Research & Planning, WY DWS, 6/12/18.

### Average Earnings by Age and Gender with Place of Work in Albany County in 2011

Gender	Age Group	Number	Age Percent	Gender Percent	Average Annual Wage	Average Quarters Worked	Average Annual Employers
Women	00-19	491	5.7	0.0	\$3,807	2.5	1.5
Women	20-24	1,878	21.8	0.0	\$8,840	3.0	1.6
Women	25-34	2,077	24.1	0.0	\$23,429	3.3	1.4
Women	35-44	1,282	14.9	0.0	\$34,104	3.6	1.3
Women	45-54	1,338	15.6	0.0	\$38,090	3.7	1.2
Women	55-64	1,208	14.0	0.0	\$39,402	3.7	1.1
Women	65-Up	322	3.7	0.0	\$19,966	3.3	1.1
Women	N/A	6	0.1	0.0	\$17,933	2.8	1.2
Women	Total	8,602	100.0	44.6	\$25,105	3.3	1.3
Men	00-19	503	5.5	0.0	\$3,715	2.4	1.4
Men	20-24	1,656	18.2	0.0	\$9,645	2.9	1.5
Men	25-34	2,457	27.0	0.0	\$26,357	3.3	1.3
Men	35-44	1,449	15.9	0.0	\$50,301	3.6	1.2
Men	45-54	1,358	14.9	0.0	\$59,828	3.7	1.2
Men	55-64	1,274	14.0	0.0	\$55,543	3.6	1.1
Men	65-Up	396	4.4	0.0	\$41,418	3.4	1.1
Men	N/A	5	0.1	0.0	\$17,031	2.6	1.0
Men	Total	9,098	100.0	47.2	\$35,610	3.3	1.3
N/A	N/A	1,568	100.0	0.0	\$10,755	2.2	1.1
N/A	Total	1,568	100.0	8.1	\$10,755	2.2	1.1
Total	00-19	994	5.2	0.0	\$3,760	2.5	1.4
Total	20-24	3,534	18.3	0.0	\$9,218	2.9	1.5
Total	25-34	4,534	23.5	0.0	\$25,016	3.3	1.4
Total	35-44	2,731	14.2	0.0	\$42,698	3.6	1.3
Total	45-54	2,696	14.0	0.0	\$49,040	3.7	1.2
Total	55-64	2,482	12.9	0.0	\$47,687	3.7	1.1
Total	65-Up	718	3.7	0.0	\$31,797	3.4	1.1
Total	N/A	1,579	8.2	0.0	\$10,802	2.2	1.1
Total	Total	19,268	100.0	100.0	\$28,898	3.2	1.3

Note: Persons worked at any time during the year.

County Determination: Based on county of employment in which the person made the most money in the year.

N/A: Represents persons with demographic data that is unavailable.

N/A = Nonresidents, individuals for whom demographic data are not available.

Source: Demographics of Persons Working in Wyoming by County, Industry, Age, & Gender, 2000-2017.

Research & Planning, Wyoming Department of Workforce Services.

Prepared by M. Moore, Research & Planning, WY DWS, 6/12/18.

### Average Earnings by Age and Gender with Place of Work in Albany County in 2012

Gender	Age Group	Number	Age Percent	Gender Percent	Average Annual Wage	Average Quarters Worked	Average Annual Employers
Women	00-19	507	5.9	0.0	\$3,742	2.5	1.5
Women	20-24	1,875	21.7	0.0	\$8,907	2.9	1.6
Women	25-34	2,080	24.1	0.0	\$23,472	3.3	1.4
Women	35-44	1,325	15.3	0.0	\$34,440	3.6	1.3
Women	45-54	1,272	14.7	0.0	\$39,234	3.7	1.3
Women	55-64	1,238	14.3	0.0	\$39,243	3.7	1.1
Women	65-Up	334	3.9	0.0	\$20,715	3.2	1.1
Women	N/A	3	0.0	0.0	\$52,356	4.0	1.0
Women	Total	8,634	100.0	44.6	\$25,320	3.3	1.4
Men	00-19	495	5.4	0.0	\$3,485	2.4	1.3
Men	20-24	1,630	17.9	0.0	\$10,042	2.9	1.5
Men	25-34	2,438	26.8	0.0	\$27,088	3.3	1.3
Men	35-44	1,471	16.2	0.0	\$47,145	3.5	1.2
Men	45-54	1,371	15.1	0.0	\$60,887	3.7	1.2
Men	55-64	1,256	13.8	0.0	\$57,393	3.6	1.1
Men	65-Up	431	4.7	0.0	\$43,837	3.4	1.1
Men	N/A	7	0.1	0.0	\$14,722	2.0	1.3
Men	Total	9,099	100.0	47.0	\$36,053	3.3	1.3
N/A	N/A	1,632	100.0	0.0	\$11,403	2.2	1.1
N/A	Total	1,632	100.0	8.4	\$11,403	2.2	1.1
Total	00-19	1,002	5.2	0.0	\$3,615	2.4	1.4
Total	20-24	3,505	18.1	0.0	\$9,435	2.9	1.6
Total	25-34	4,518	23.3	0.0	\$25,423	3.3	1.4
Total	35-44	2,796	14.4	0.0	\$41,124	3.6	1.3
Total	45-54	2,643	13.6	0.0	\$50,466	3.7	1.2
Total	55-64	2,494	12.9	0.0	\$48,383	3.7	1.1
Total	65-Up	765	4.0	0.0	\$33,742	3.4	1.1
Total	N/A	1,642	8.5	0.0	\$11,492	2.2	1.1
Total	Total	19,365	100.0	100.0	\$29,190	3.2	1.3

Note: Persons worked at any time during the year.

County Determination: Based on county of employment in which the person made the most money in the year.

N/A: Represents persons with demographic data that is unavailable.

N/A = Nonresidents, individuals for whom demographic data are not available.

Source: Demographics of Persons Working in Wyoming by County, Industry, Age, & Gender, 2000-2017.

Research & Planning, Wyoming Department of Workforce Services.

Prepared by M. Moore, Research & Planning, WY DWS, 6/12/18.



### Average Earnings by Age and Gender with Place of Work in Albany County in 2013

Gender	Age Group	Number	Age Percent	Gender Percent	Average Annual Wage	Average Quarters Worked	Average Annual Employers
Women	00-19	522	6.0	0.0	\$3,653	2.5	1.5
Women	20-24	1,836	21.3	0.0	\$9,186	3.0	1.6
Women	25-34	2,108	24.4	0.0	\$23,477	3.3	1.4
Women	35-44	1,329	15.4	0.0	\$34,972	3.5	1.3
Women	45-54	1,270	14.7	0.0	\$38,330	3.6	1.3
Women	55-64	1,233	14.3	0.0	\$40,921	3.6	1.2
Women	65-Up	328	3.8	0.0	\$21,436	3.3	1.1
Women	N/A	3	0.0	0.0	\$33,249	4.0	1.0
Women	Total	8,629	100.0	43.8	\$25,612	3.3	1.4
Men	00-19	509	5.4	0.0	\$3,952	2.5	1.4
Men	20-24	1,709	18.3	0.0	\$9,916	2.8	1.5
Men	25-34	2,521	27.0	0.0	\$25,827	3.2	1.4
Men	35-44	1,532	16.4	0.0	\$46,737	3.5	1.2
Men	45-54	1,349	14.4	0.0	\$58,779	3.6	1.2
Men	55-64	1,264	13.5	0.0	\$58,842	3.6	1.1
Men	65-Up	452	4.8	0.0	\$45,486	3.4	1.1
Men	N/A	5	0.1	0.0	\$24,857	2.8	1.2
Men	Total	9,341	100.0	47.4	\$35,330	3.3	1.3
N/A	N/A	1,718	100.0	0.0	\$11,972	2.2	1.1
N/A	Total	1,718	100.0	8.7	\$11,972	2.2	1.1
Total	00-19	1,031	5.2	0.0	\$3,801	2.5	1.4
Total	20-24	3,545	18.0	0.0	\$9,538	2.9	1.6
Total	25-34	4,629	23.5	0.0	\$24,757	3.2	1.4
Total	35-44	2,861	14.5	0.0	\$41,272	3.5	1.2
Total	45-54	2,619	13.3	0.0	\$48,863	3.6	1.2
Total	55-64	2,497	12.7	0.0	\$49,993	3.6	1.1
Total	65-Up	780	4.0	0.0	\$35,373	3.4	1.1
Total	N/A	1,726	8.8	0.0	\$12,046	2.2	1.1
Total	Total	19,688	100.0	100.0	\$29,033	3.2	1.3

Note: Persons worked at any time during the year.

County Determination: Based on county of employment in which the person made the most money in the year.

N/A: Represents persons with demographic data that is unavailable.

N/A = Nonresidents, individuals for whom demographic data are not available.

Source: Demographics of Persons Working in Wyoming by County, Industry, Age, & Gender, 2000-2017.

Research & Planning, Wyoming Department of Workforce Services.

Prepared by M. Moore, Research & Planning, WY DWS, 6/12/18.

### Average Earnings by Age and Gender with Place of Work in Albany County in 2014

Gender	Age Group	Number	Age Percent	Gender Percent	Average Annual Wage	Average Quarters Worked	Average Annual Employers
Women	00-19	529	6.1	0.0	\$3,756	2.5	1.5
Women	20-24	1,819	21.0	0.0	\$9,809	3.0	1.6
Women	25-34	2,136	24.7	0.0	\$23,551	3.3	1.4
Women	35-44	1,360	15.7	0.0	\$36,012	3.5	1.3
Women	45-54	1,237	14.3	0.0	\$39,351	3.6	1.3
Women	55-64	1,233	14.3	0.0	\$41,175	3.6	1.2
Women	65-Up	332	3.8	0.0	\$24,050	3.4	1.1
Women	N/A	4	0.0	0.0	\$24,929	3.3	1.0
Women	Total	8,650	100.0	44.0	\$26,201	3.3	1.4
Men	00-19	496	5.4	0.0	\$4,229	2.4	1.5
Men	20-24	1,623	17.6	0.0	\$10,914	2.9	1.6
Men	25-34	2,532	27.4	0.0	\$26,788	3.2	1.4
Men	35-44	1,543	16.7	0.0	\$48,740	3.5	1.2
Men	45-54	1,308	14.2	0.0	\$58,865	3.6	1.2
Men	55-64	1,251	13.6	0.0	\$59,340	3.6	1.1
Men	65-Up	468	5.1	0.0	\$46,931	3.4	1.1
Men	N/A	5	0.1	0.0	\$26,354	2.8	1.2
Men	Total	9,226	100.0	46.9	\$36,437	3.3	1.3
N/A	N/A	1,788	100.0	0.0	\$11,944	2.1	1.1
N/A	Total	1,788	100.0	9.1	\$11,944	2.1	1.1
Total	00-19	1,025	5.2	0.0	\$3,985	2.5	1.5
Total	20-24	3,442	17.5	0.0	\$10,330	3.0	1.6
Total	25-34	4,668	23.7	0.0	\$25,307	3.3	1.4
Total	35-44	2,903	14.8	0.0	\$42,777	3.5	1.3
Total	45-54	2,545	12.9	0.0	\$49,380	3.6	1.3
Total	55-64	2,484	12.6	0.0	\$50,323	3.6	1.1
Total	65-Up	800	4.1	0.0	\$37,435	3.4	1.1
Total	N/A	1,797	9.1	0.0	\$12,013	2.1	1.1
Total	Total	19,664	100.0	100.0	\$29,707	3.2	1.3

Note: Persons worked at any time during the year.

County Determination: Based on county of employment in which the person made the most money in the year.

N/A: Represents persons with demographic data that is unavailable.

N/A = Nonresidents, individuals for whom demographic data are not available.

Source: Demographics of Persons Working in Wyoming by County, Industry, Age, & Gender, 2000-2017.  
Research & Planning, Wyoming Department of Workforce Services.

Prepared by M. Moore, Research & Planning, WY DWS, 6/12/18.

### Average Earnings by Age and Gender with Place of Work in Albany County in 2015

Gender	Age Group	Number	Age Percent	Gender Percent	Average Annual Wage	Average Quarters Worked	Average Annual Employers
Women	00-19	524	6.0	0.0	\$4,163	2.6	1.5
Women	20-24	1,840	20.9	0.0	\$9,937	3.0	1.6
Women	25-34	2,208	25.1	0.0	\$25,001	3.3	1.4
Women	35-44	1,425	16.2	0.0	\$36,838	3.5	1.3
Women	45-54	1,174	13.3	0.0	\$42,295	3.7	1.3
Women	55-64	1,243	14.1	0.0	\$42,422	3.6	1.2
Women	65-Up	378	4.3	0.0	\$25,272	3.4	1.1
Women	N/A	3	0.0	0.0	\$25,825	2.7	1.0
Women	Total	8,795	100.0	44.0	\$27,308	3.3	1.4
Men	00-19	541	5.7	0.0	\$4,762	2.5	1.5
Men	20-24	1,698	18.0	0.0	\$11,527	2.9	1.6
Men	25-34	2,607	27.7	0.0	\$27,619	3.3	1.4
Men	35-44	1,594	16.9	0.0	\$50,826	3.5	1.3
Men	45-54	1,279	13.6	0.0	\$61,384	3.6	1.2
Men	55-64	1,209	12.8	0.0	\$60,669	3.6	1.2
Men	65-Up	479	5.1	0.0	\$43,832	3.4	1.1
Men	N/A	3	0.0	0.0	\$41,145	3.3	1.3
Men	Total	9,410	100.0	47.0	\$36,998	3.3	1.3
N/A	N/A	1,802	100.0	0.0	\$13,313	2.1	1.2
N/A	Total	1,802	100.0	9.0	\$13,313	2.1	1.2
Total	00-19	1,065	5.3	0.0	\$4,467	2.5	1.5
Total	20-24	3,538	17.7	0.0	\$10,700	3.0	1.6
Total	25-34	4,815	24.1	0.0	\$26,419	3.3	1.4
Total	35-44	3,019	15.1	0.0	\$44,223	3.5	1.3
Total	45-54	2,453	12.3	0.0	\$52,248	3.6	1.2
Total	55-64	2,452	12.3	0.0	\$51,419	3.6	1.2
Total	65-Up	857	4.3	0.0	\$35,646	3.4	1.1
Total	N/A	1,808	9.0	0.0	\$13,380	2.1	1.2
Total	Total	20,007	100.0	100.0	\$30,605	3.2	1.3

Note: Persons worked at any time during the year.

County Determination: Based on county of employment in which the person made the most money in the year.

N/A: Represents persons with demographic data that is unavailable.

N/A = Nonresidents, individuals for whom demographic data are not available.

Source: Demographics of Persons Working in Wyoming by County, Industry, Age, & Gender, 2000-2017.  
Research & Planning, Wyoming Department of Workforce Services.

Prepared by M. Moore, Research & Planning, WY DWS, 6/12/18.

### Average Earnings by Age and Gender with Place of Work in Albany County in 2016

Gender	Age Group	Number	Age Percent	Gender Percent	Average Annual Wage	Average Quarters Worked	Average Annual Employers
Women	00-19	511	6.0	0.0	\$4,146	2.6	1.5
Women	20-24	1,786	21.0	0.0	\$10,468	3.1	1.6
Women	25-34	2,076	24.4	0.0	\$26,672	3.4	1.4
Women	35-44	1,402	16.5	0.0	\$38,795	3.6	1.3
Women	45-54	1,170	13.8	0.0	\$43,287	3.7	1.3
Women	55-64	1,175	13.8	0.0	\$44,709	3.7	1.2
Women	65-Up	382	4.5	0.0	\$26,910	3.4	1.1
Women	N/A	3	0.0	0.0	\$19,923	3.0	1.0
Women	Total	8,505	100.0	43.0	\$28,700	3.4	1.4
Men	00-19	520	5.6	0.0	\$5,195	2.6	1.5
Men	20-24	1,716	18.4	0.0	\$11,980	3.0	1.5
Men	25-34	2,569	27.5	0.0	\$28,531	3.3	1.4
Men	35-44	1,617	17.3	0.0	\$51,189	3.6	1.3
Men	45-54	1,248	13.4	0.0	\$62,956	3.6	1.2
Men	55-64	1,193	12.8	0.0	\$60,555	3.6	1.2
Men	65-Up	471	5.0	0.0	\$46,784	3.3	1.1
Men	N/A	1	0.0	0.0	\$68,942	4.0	1.0
Men	Total	9,335	100.0	47.2	\$37,734	3.3	1.3
N/A	N/A	1,928	100.0	0.0	\$13,553	2.1	1.2
N/A	Total	1,928	100.0	9.8	\$13,553	2.1	1.2
Total	00-19	1,031	5.2	0.0	\$4,675	2.6	1.5
Total	20-24	3,502	17.7	0.0	\$11,209	3.0	1.6
Total	25-34	4,645	23.5	0.0	\$27,700	3.4	1.4
Total	35-44	3,019	15.3	0.0	\$45,433	3.6	1.3
Total	45-54	2,418	12.2	0.0	\$53,439	3.7	1.2
Total	55-64	2,368	12.0	0.0	\$52,692	3.7	1.2
Total	65-Up	853	4.3	0.0	\$37,884	3.3	1.1
Total	N/A	1,932	9.8	0.0	\$13,591	2.1	1.2
Total	Total	19,768	100.0	100.0	\$31,489	3.3	1.3

Note: Persons worked at any time during the year.

County Determination: Based on county of employment in which the person made the most money in the year.

N/A: Represents persons with demographic data that is unavailable.

N/A = Nonresidents, individuals for whom demographic data are not available.

Source: Demographics of Persons Working in Wyoming by County, Industry, Age, & Gender, 2000-2017.

Research & Planning, Wyoming Department of Workforce Services.

Prepared by M. Moore, Research & Planning, WY DWS, 6/12/18.

### Average Earnings by Age and Gender with Place of Work in Albany County in 2017

Gender	Age Group	Number	Age Percent	Gender Percent	Average Annual Wage	Average Quarters Worked	Average Annual Employers
Women	00-19	435	5.2	0.0	\$4,633	2.7	1.5
Women	20-24	1,791	21.6	0.0	\$10,125	3.0	1.6
Women	25-34	2,012	24.2	0.0	\$27,188	3.4	1.4
Women	35-44	1,391	16.8	0.0	\$39,626	3.6	1.3
Women	45-54	1,143	13.8	0.0	\$42,674	3.7	1.3
Women	55-64	1,150	13.9	0.0	\$44,614	3.7	1.2
Women	65-Up	374	4.5	0.0	\$28,528	3.3	1.1
Women	N/A	1	0.0	0.0	\$53,604	4.0	1.0
Women	Total	8,297	100.0	42.7	\$29,020	3.4	1.4
Men	00-19	482	5.4	0.0	\$4,862	2.5	1.4
Men	20-24	1,648	18.3	0.0	\$12,138	3.0	1.5
Men	25-34	2,418	26.8	0.0	\$29,056	3.3	1.4
Men	35-44	1,606	17.8	0.0	\$53,459	3.6	1.2
Men	45-54	1,208	13.4	0.0	\$65,822	3.6	1.2
Men	55-64	1,163	12.9	0.0	\$61,221	3.6	1.1
Men	65-Up	480	5.3	0.0	\$48,139	3.2	1.1
Men	N/A	1	0.0	0.0	\$68,889	4.0	1.0
Men	Total	9,006	100.0	46.3	\$39,124	3.3	1.3
N/A	N/A	2,135	100.0	0.0	\$14,927	2.2	1.2
N/A	Total	2,135	100.0	11.0	\$14,927	2.2	1.2
Total	00-19	917	4.7	0.0	\$4,753	2.6	1.5
Total	20-24	3,439	17.7	0.0	\$11,090	3.0	1.5
Total	25-34	4,430	22.8	0.0	\$28,208	3.4	1.4
Total	35-44	2,997	15.4	0.0	\$47,039	3.6	1.3
Total	45-54	2,351	12.1	0.0	\$54,568	3.6	1.2
Total	55-64	2,313	11.9	0.0	\$52,964	3.7	1.2
Total	65-Up	854	4.4	0.0	\$39,550	3.3	1.1
Total	N/A	2,137	11.0	0.0	\$14,970	2.2	1.2
Total	Total	19,438	100.0	100.0	\$32,153	3.2	1.3

Note: Persons worked at any time during the year.

County Determination: Based on county of employment in which the person made the most money in the year.

N/A: Represents persons with demographic data that is unavailable.

N/A = Nonresidents, individuals for whom demographic data are not available.

Source: Demographics of Persons Working in Wyoming by County, Industry, Age, & Gender, 2000-2017.

Research & Planning, Wyoming Department of Workforce Services.

Prepared by M. Moore, Research & Planning, WY DWS, 6/12/18.