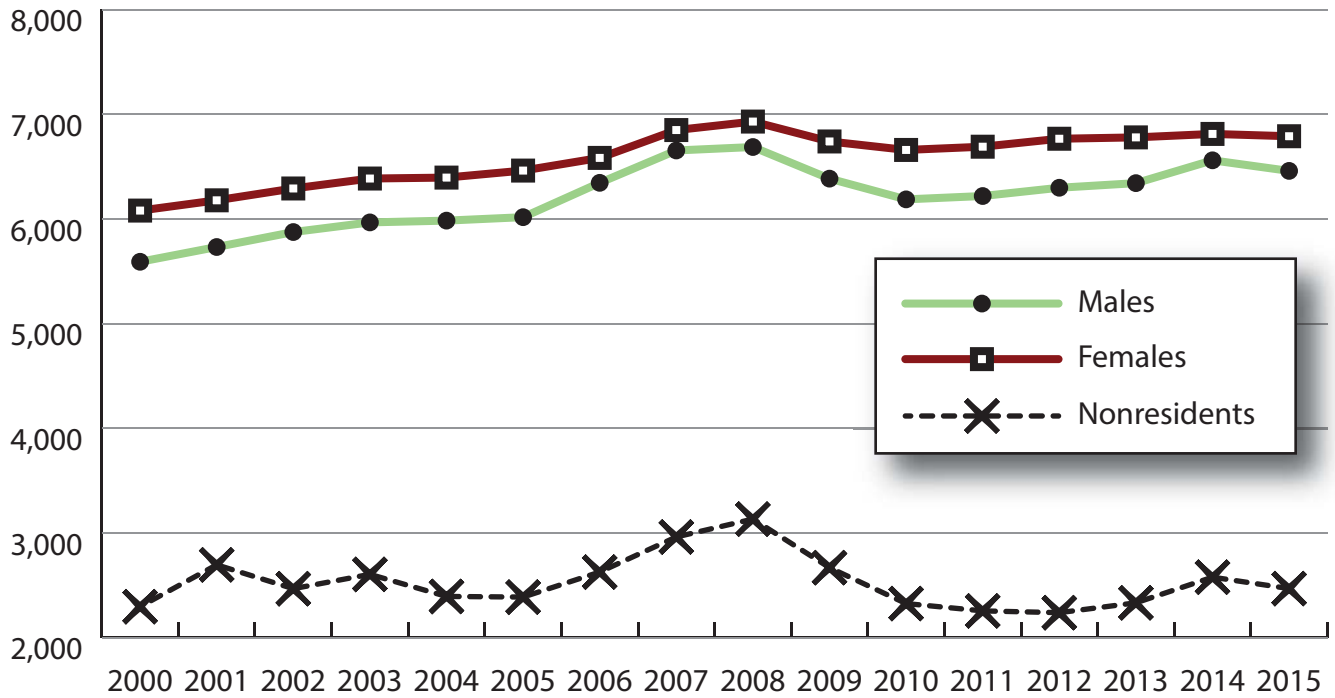
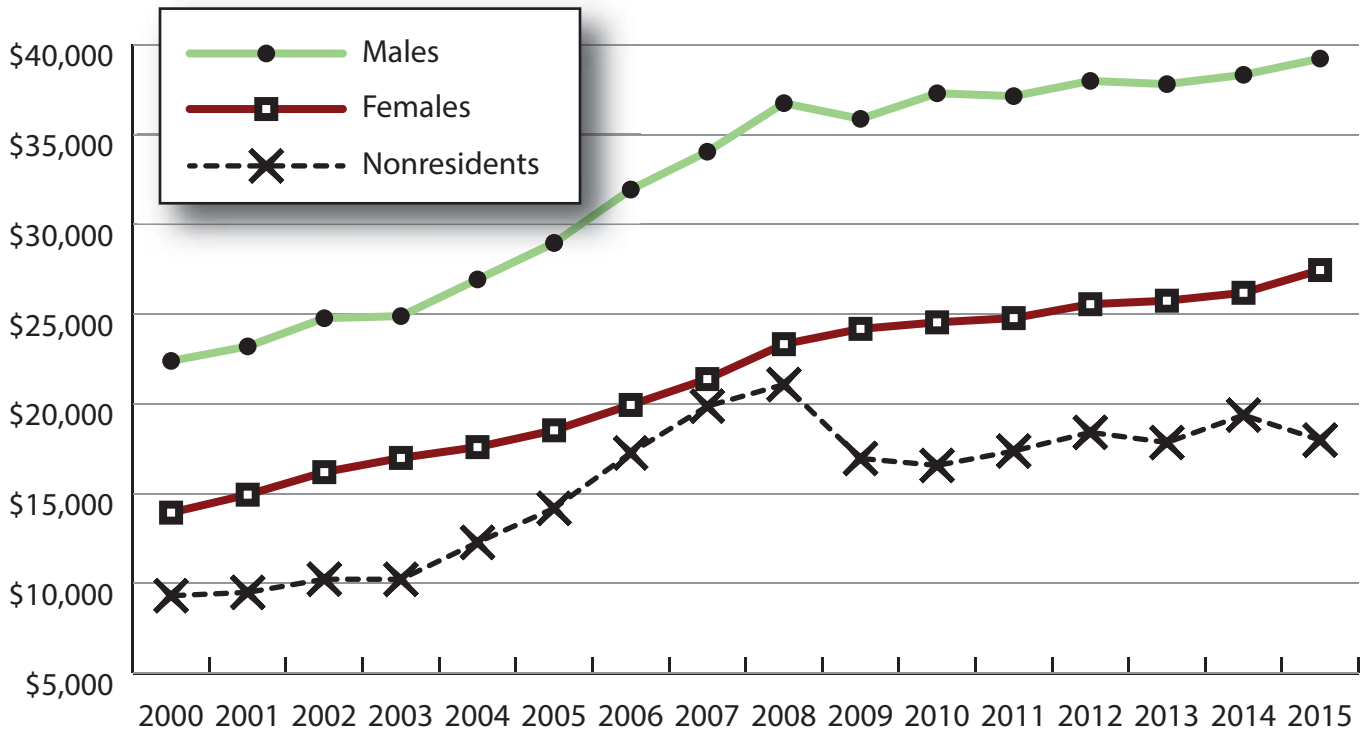


# Wage Records in Wyoming: Employment and Earnings by Age and Gender with Place of Work in Sheridan County, 2000-2015

Total Number of Persons Working in Sheridan County at Any Time by Gender, 2000-2015



Average Annual Earnings for Persons Working in Sheridan County at Any Time by Gender, 2000-2015



# Wage Records in Wyoming: Employment and Earnings by Age and Gender with Place of Work in Sheridan County, 2000-2015

## Average Earnings by Age and Gender with Place of Work in Sheridan County in 2000

Gender	Age Group	Number	Age Percent	Gender Percent	Average Annual Wage	Average Quarters Worked	Average Annual Employers
Women	00-19	732	12.0	0.0	\$3,043	2.7	1.7
Women	20-24	689	11.3	0.0	\$7,234	3.0	1.8
Women	25-34	1,022	16.8	0.0	\$13,251	3.3	1.6
Women	35-44	1,389	22.8	0.0	\$17,326	3.5	1.4
Women	45-54	1,429	23.5	0.0	\$19,996	3.6	1.3
Women	55-64	613	10.1	0.0	\$16,115	3.4	1.3
Women	65-Up	204	3.4	0.0	\$7,113	3.0	1.1
Women	N/A	2	0.0	0.0	\$12,012	2.5	1.0
Women	Total	6,080	100.0	43.5	\$13,939	3.3	1.5
Men	00-19	713	12.8	0.0	\$3,477	2.6	1.7
Men	20-24	737	13.2	0.0	\$9,371	3.1	2.0
Men	25-34	1,078	19.3	0.0	\$19,995	3.3	1.6
Men	35-44	1,155	20.7	0.0	\$27,782	3.5	1.4
Men	45-54	1,120	20.0	0.0	\$33,877	3.5	1.2
Men	55-64	584	10.4	0.0	\$28,549	3.4	1.2
Men	65-Up	201	3.6	0.0	\$37,306	3.0	1.1
Men	N/A	3	0.1	0.0	\$15,241	4.0	1.0
Men	Total	5,591	100.0	40.0	\$22,391	3.3	1.5
N/A	N/A	2,297	100.0	0.0	\$9,310	2.3	1.3
N/A	Total	2,297	100.0	16.4	\$9,310	2.3	1.3
Total	00-19	1,445	10.3	0.0	\$3,257	2.6	1.7
Total	20-24	1,426	10.2	0.0	\$8,339	3.0	1.9
Total	25-34	2,100	15.0	0.0	\$16,713	3.3	1.6
Total	35-44	2,544	18.2	0.0	\$22,073	3.5	1.4
Total	45-54	2,549	18.2	0.0	\$26,095	3.5	1.3
Total	55-64	1,197	8.6	0.0	\$22,181	3.4	1.3
Total	65-Up	405	2.9	0.0	\$22,097	3.0	1.1
Total	N/A	2,302	16.5	0.0	\$9,320	2.4	1.3
Total	Total	13,968	100.0	100.0	\$16,561	3.1	1.5

Note: Persons worked at any time during the year.

County Determination: Based on county of employment in which the person made the most money in the year.

N/A: Represents persons with demographic data that is unavailable.

# Wage Records in Wyoming: Employment and Earnings by Age and Gender with Place of Work in Sheridan County, 2000-2015

## Average Earnings by Age and Gender with Place of Work in Sheridan County in 2001

Gender	Age Group	Number	Age Percent	Gender Percent	Average Annual Wage	Average Quarters Worked	Average Annual Employers
Women	00-19	738	11.9	0.0	\$3,299	2.7	1.7
Women	20-24	719	11.6	0.0	\$7,704	3.0	1.9
Women	25-34	1,059	17.1	0.0	\$14,159	3.3	1.6
Women	35-44	1,313	21.3	0.0	\$18,287	3.4	1.4
Women	45-54	1,499	24.3	0.0	\$21,381	3.6	1.3
Women	55-64	656	10.6	0.0	\$17,981	3.5	1.2
Women	65-Up	193	3.1	0.0	\$7,568	3.2	1.1
Women	N/A	1	0.0	0.0	\$8,289	4.0	1.0
Women	Total	6,178	100.0	42.3	\$14,939	3.3	1.5
Men	00-19	704	12.3	0.0	\$3,887	2.6	1.7
Men	20-24	757	13.2	0.0	\$10,256	2.9	1.9
Men	25-34	1,152	20.1	0.0	\$21,124	3.3	1.6
Men	35-44	1,130	19.7	0.0	\$30,090	3.4	1.4
Men	45-54	1,141	19.9	0.0	\$33,605	3.4	1.2
Men	55-64	614	10.7	0.0	\$30,041	3.4	1.2
Men	65-Up	229	4.0	0.0	\$31,871	3.0	1.1
Men	N/A	5	0.1	0.0	\$10,690	2.4	1.2
Men	Total	5,732	100.0	39.2	\$23,199	3.2	1.5
N/A	N/A	2,697	100.0	0.0	\$9,496	2.2	1.3
N/A	Total	2,697	100.0	18.5	\$9,496	2.2	1.3
Total	00-19	1,442	9.9	0.0	\$3,586	2.6	1.7
Total	20-24	1,476	10.1	0.0	\$9,013	3.0	1.9
Total	25-34	2,211	15.1	0.0	\$17,788	3.3	1.6
Total	35-44	2,443	16.7	0.0	\$23,746	3.4	1.4
Total	45-54	2,640	18.1	0.0	\$26,664	3.5	1.3
Total	55-64	1,270	8.7	0.0	\$23,811	3.5	1.2
Total	65-Up	422	2.9	0.0	\$20,756	3.1	1.1
Total	N/A	2,703	18.5	0.0	\$9,498	2.2	1.3
Total	Total	14,607	100.0	100.0	\$17,175	3.0	1.4

Note: Persons worked at any time during the year.

County Determination: Based on county of employment in which the person made the most money in the year.

N/A: Represents persons with demographic data that is unavailable.

# Wage Records in Wyoming: Employment and Earnings by Age and Gender with Place of Work in Sheridan County, 2000-2015

## Average Earnings by Age and Gender with Place of Work in Sheridan County in 2002

Gender	Age Group	Number	Age Percent	Gender Percent	Average Annual Wage	Average Quarters Worked	Average Annual Employers
Women	00-19	767	12.2	0.0	\$3,449	2.7	1.7
Women	20-24	706	11.2	0.0	\$8,189	3.0	1.8
Women	25-34	1,064	16.9	0.0	\$15,839	3.4	1.6
Women	35-44	1,288	20.5	0.0	\$19,702	3.5	1.4
Women	45-54	1,537	24.4	0.0	\$22,752	3.6	1.3
Women	55-64	730	11.6	0.0	\$19,766	3.6	1.2
Women	65-Up	196	3.1	0.0	\$9,246	3.3	1.1
Women	N/A	3	0.0	0.0	\$7,190	2.0	1.0
Women	Total	6,291	100.0	43.0	\$16,196	3.3	1.5
Men	00-19	699	11.9	0.0	\$3,840	2.6	1.6
Men	20-24	756	12.9	0.0	\$10,888	3.0	1.9
Men	25-34	1,192	20.3	0.0	\$21,350	3.3	1.6
Men	35-44	1,083	18.4	0.0	\$30,413	3.4	1.3
Men	45-54	1,222	20.8	0.0	\$36,735	3.5	1.2
Men	55-64	670	11.4	0.0	\$33,669	3.4	1.2
Men	65-Up	247	4.2	0.0	\$35,101	3.0	1.1
Men	N/A	6	0.1	0.0	\$16,198	2.5	1.0
Men	Total	5,875	100.0	40.1	\$24,769	3.2	1.4
N/A	N/A	2,469	100.0	0.0	\$10,230	2.3	1.4
N/A	Total	2,469	100.0	16.9	\$10,230	2.3	1.4
Total	00-19	1,466	10.0	0.0	\$3,636	2.6	1.7
Total	20-24	1,462	10.0	0.0	\$9,584	3.0	1.9
Total	25-34	2,256	15.4	0.0	\$18,751	3.3	1.6
Total	35-44	2,371	16.2	0.0	\$24,595	3.4	1.4
Total	45-54	2,759	18.9	0.0	\$28,945	3.5	1.3
Total	55-64	1,400	9.6	0.0	\$26,419	3.5	1.2
Total	65-Up	443	3.0	0.0	\$23,662	3.2	1.1
Total	N/A	2,478	16.9	0.0	\$10,241	2.3	1.4
Total	Total	14,635	100.0	100.0	\$18,631	3.1	1.4

Note: Persons worked at any time during the year.

County Determination: Based on county of employment in which the person made the most money in the year.

N/A: Represents persons with demographic data that is unavailable.

# Wage Records in Wyoming: Employment and Earnings by Age and Gender with Place of Work in Sheridan County, 2000-2015

## Average Earnings by Age and Gender with Place of Work in Sheridan County in 2003

Gender	Age Group	Number	Age Percent	Gender Percent	Average Annual Wage	Average Quarters Worked	Average Annual Employers
Women	00-19	756	11.8	0.0	\$4,741	2.7	1.7
Women	20-24	751	11.8	0.0	\$8,402	3.0	1.8
Women	25-34	1,064	16.7	0.0	\$15,738	3.4	1.5
Women	35-44	1,263	19.8	0.0	\$20,715	3.5	1.4
Women	45-54	1,535	24.0	0.0	\$23,967	3.6	1.3
Women	55-64	792	12.4	0.0	\$21,069	3.6	1.2
Women	65-Up	223	3.5	0.0	\$9,796	3.3	1.1
Women	N/A	2	0.0	0.0	\$5,466	2.5	1.0
Women	Total	6,386	100.0	42.7	\$16,986	3.4	1.4
Men	00-19	650	10.9	0.0	\$3,901	2.6	1.6
Men	20-24	802	13.4	0.0	\$10,228	2.9	1.8
Men	25-34	1,207	20.2	0.0	\$21,631	3.3	1.6
Men	35-44	1,087	18.2	0.0	\$30,719	3.4	1.3
Men	45-54	1,227	20.6	0.0	\$36,761	3.5	1.2
Men	55-64	722	12.1	0.0	\$35,617	3.4	1.2
Men	65-Up	269	4.5	0.0	\$27,436	3.1	1.1
Men	N/A	3	0.1	0.0	\$20,784	3.0	1.0
Men	Total	5,967	100.0	39.9	\$24,887	3.2	1.4
N/A	N/A	2,606	100.0	0.0	\$10,225	2.3	1.3
N/A	Total	2,606	100.0	17.4	\$10,225	2.3	1.3
Total	00-19	1,406	9.4	0.0	\$4,353	2.7	1.6
Total	20-24	1,553	10.4	0.0	\$9,345	3.0	1.8
Total	25-34	2,271	15.2	0.0	\$18,870	3.3	1.5
Total	35-44	2,350	15.7	0.0	\$25,342	3.5	1.4
Total	45-54	2,762	18.5	0.0	\$29,650	3.6	1.3
Total	55-64	1,514	10.1	0.0	\$28,007	3.5	1.2
Total	65-Up	492	3.3	0.0	\$19,441	3.2	1.1
Total	N/A	2,611	17.5	0.0	\$10,234	2.3	1.3
Total	Total	14,959	100.0	100.0	\$18,960	3.1	1.4

Note: Persons worked at any time during the year.

County Determination: Based on county of employment in which the person made the most money in the year.

N/A: Represents persons with demographic data that is unavailable.

# Wage Records in Wyoming: Employment and Earnings by Age and Gender with Place of Work in Sheridan County, 2000-2015

## Average Earnings by Age and Gender with Place of Work in Sheridan County in 2004

Gender	Age Group	Number	Age Percent	Gender Percent	Average Annual Wage	Average Quarters Worked	Average Annual Employers
Women	00-19	707	11.1	0.0	\$3,417	2.7	1.6
Women	20-24	768	12.0	0.0	\$8,748	3.0	1.8
Women	25-34	1,061	16.6	0.0	\$16,330	3.4	1.6
Women	35-44	1,208	18.9	0.0	\$21,453	3.5	1.4
Women	45-54	1,537	24.0	0.0	\$24,865	3.6	1.3
Women	55-64	867	13.6	0.0	\$22,157	3.5	1.2
Women	65-Up	246	3.8	0.0	\$10,887	3.3	1.1
Women	N/A	1	0.0	0.0	\$5,420	4.0	1.0
Women	Total	6,395	100.0	43.3	\$17,590	3.4	1.4
Men	00-19	584	9.8	0.0	\$3,882	2.5	1.5
Men	20-24	776	13.0	0.0	\$11,526	3.0	1.8
Men	25-34	1,230	20.6	0.0	\$23,842	3.3	1.5
Men	35-44	1,129	18.9	0.0	\$33,484	3.5	1.3
Men	45-54	1,234	20.6	0.0	\$38,779	3.5	1.2
Men	55-64	744	12.4	0.0	\$37,708	3.5	1.2
Men	65-Up	285	4.8	0.0	\$24,168	3.2	1.1
Men	N/A	2	0.0	0.0	\$7,769	2.0	1.0
Men	Total	5,984	100.0	40.5	\$26,930	3.3	1.4
N/A	N/A	2,395	100.0	0.0	\$12,279	2.5	1.3
N/A	Total	2,395	100.0	16.2	\$12,279	2.5	1.3
Total	00-19	1,291	8.7	0.0	\$3,627	2.6	1.6
Total	20-24	1,544	10.5	0.0	\$10,144	3.0	1.8
Total	25-34	2,291	15.5	0.0	\$20,363	3.3	1.5
Total	35-44	2,337	15.8	0.0	\$27,265	3.5	1.4
Total	45-54	2,771	18.8	0.0	\$31,061	3.6	1.3
Total	55-64	1,611	10.9	0.0	\$29,338	3.5	1.2
Total	65-Up	531	3.6	0.0	\$18,015	3.2	1.1
Total	N/A	2,398	16.2	0.0	\$12,272	2.5	1.3
Total	Total	14,774	100.0	100.0	\$20,512	3.2	1.4

Note: Persons worked at any time during the year.

County Determination: Based on county of employment in which the person made the most money in the year.

N/A: Represents persons with demographic data that is unavailable.

# Wage Records in Wyoming: Employment and Earnings by Age and Gender with Place of Work in Sheridan County, 2000-2015

## Average Earnings by Age and Gender with Place of Work in Sheridan County in 2005

Gender	Age Group	Number	Age Percent	Gender Percent	Average Annual Wage	Average Quarters Worked	Average Annual Employers
Women	00-19	701	10.8	0.0	\$3,595	2.7	1.7
Women	20-24	764	11.8	0.0	\$8,865	3.0	1.9
Women	25-34	1,126	17.4	0.0	\$17,142	3.3	1.6
Women	35-44	1,159	17.9	0.0	\$22,545	3.5	1.4
Women	45-54	1,534	23.7	0.0	\$26,041	3.6	1.3
Women	55-64	920	14.2	0.0	\$23,994	3.6	1.3
Women	65-Up	257	4.0	0.0	\$11,498	3.3	1.1
Women	N/A	1	0.0	0.0	\$5,504	4.0	1.0
Women	Total	6,462	100.0	43.5	\$18,525	3.4	1.5
Men	00-19	608	10.1	0.0	\$3,877	2.6	1.5
Men	20-24	740	12.3	0.0	\$12,551	3.0	1.8
Men	25-34	1,249	20.8	0.0	\$26,160	3.3	1.6
Men	35-44	1,123	18.7	0.0	\$36,318	3.5	1.4
Men	45-54	1,233	20.5	0.0	\$42,114	3.5	1.2
Men	55-64	776	12.9	0.0	\$40,687	3.5	1.2
Men	65-Up	287	4.8	0.0	\$19,746	3.2	1.1
Men	N/A	1	0.0	0.0	\$8,613	3.0	1.0
Men	Total	6,017	100.0	40.5	\$28,964	3.3	1.4
N/A	N/A	2,389	100.0	0.0	\$14,180	2.7	1.4
N/A	Total	2,389	100.0	16.1	\$14,180	2.7	1.4
Total	00-19	1,309	8.8	0.0	\$3,726	2.6	1.6
Total	20-24	1,504	10.1	0.0	\$10,678	3.0	1.8
Total	25-34	2,375	16.0	0.0	\$21,885	3.3	1.6
Total	35-44	2,282	15.3	0.0	\$29,323	3.5	1.4
Total	45-54	2,767	18.6	0.0	\$33,203	3.6	1.3
Total	55-64	1,696	11.4	0.0	\$31,632	3.5	1.2
Total	65-Up	544	3.7	0.0	\$15,850	3.3	1.1
Total	N/A	2,391	16.1	0.0	\$14,174	2.7	1.4
Total	Total	14,868	100.0	100.0	\$22,051	3.2	1.4

Note: Persons worked at any time during the year.

County Determination: Based on county of employment in which the person made the most money in the year.

N/A: Represents persons with demographic data that is unavailable.

# Wage Records in Wyoming: Employment and Earnings by Age and Gender with Place of Work in Sheridan County, 2000-2015

## Average Earnings by Age and Gender with Place of Work in Sheridan County in 2006

Gender	Age Group	Number	Age Percent	Gender Percent	Average Annual Wage	Average Quarters Worked	Average Annual Employers
Women	00-19	705	10.7	0.0	\$3,955	2.8	1.8
Women	20-24	780	11.8	0.0	\$9,915	3.1	2.0
Women	25-34	1,151	17.5	0.0	\$18,873	3.4	1.6
Women	35-44	1,134	17.2	0.0	\$24,750	3.6	1.5
Women	45-54	1,534	23.3	0.0	\$27,471	3.6	1.3
Women	55-64	994	15.1	0.0	\$25,364	3.6	1.3
Women	65-Up	284	4.3	0.0	\$12,618	3.4	1.2
Women	N/A	1	0.0	0.0	\$4,631	4.0	1.0
Women	Total	6,583	100.0	42.3	\$19,938	3.4	1.5
Men	00-19	656	10.3	0.0	\$4,341	2.6	1.6
Men	20-24	755	11.9	0.0	\$14,137	3.0	1.8
Men	25-34	1,333	21.0	0.0	\$29,510	3.4	1.6
Men	35-44	1,146	18.1	0.0	\$40,173	3.5	1.3
Men	45-54	1,306	20.6	0.0	\$45,418	3.5	1.3
Men	55-64	835	13.2	0.0	\$43,849	3.4	1.2
Men	65-Up	313	4.9	0.0	\$24,931	3.2	1.2
Men	N/A	1	0.0	0.0	\$16,625	4.0	1.0
Men	Total	6,345	100.0	40.8	\$31,938	3.3	1.4
N/A	N/A	2,628	100.0	0.0	\$17,266	2.7	1.4
N/A	Total	2,628	100.0	16.9	\$17,266	2.7	1.4
Total	00-19	1,361	8.7	0.0	\$4,141	2.7	1.7
Total	20-24	1,535	9.9	0.0	\$11,991	3.0	1.9
Total	25-34	2,484	16.0	0.0	\$24,581	3.4	1.6
Total	35-44	2,280	14.7	0.0	\$32,502	3.5	1.4
Total	45-54	2,840	18.3	0.0	\$35,724	3.6	1.3
Total	55-64	1,829	11.8	0.0	\$33,803	3.5	1.2
Total	65-Up	597	3.8	0.0	\$19,074	3.3	1.2
Total	N/A	2,630	16.9	0.0	\$17,261	2.7	1.4
Total	Total	15,556	100.0	100.0	\$24,381	3.2	1.5

Note: Persons worked at any time during the year.

County Determination: Based on county of employment in which the person made the most money in the year.

N/A: Represents persons with demographic data that is unavailable.



# Wage Records in Wyoming: Employment and Earnings by Age and Gender with Place of Work in Sheridan County, 2000-2015

## Average Earnings by Age and Gender with Place of Work in Sheridan County in 2007

Gender	Age Group	Number	Age Percent	Gender Percent	Average Annual Wage	Average Quarters Worked	Average Annual Employers
Women	00-19	728	10.6	0.0	\$4,139	2.7	1.8
Women	20-24	826	12.1	0.0	\$10,716	3.1	1.9
Women	25-34	1,242	18.1	0.0	\$20,089	3.3	1.6
Women	35-44	1,168	17.1	0.0	\$26,159	3.5	1.5
Women	45-54	1,493	21.8	0.0	\$30,046	3.6	1.3
Women	55-64	1,076	15.7	0.0	\$27,771	3.6	1.2
Women	65-Up	315	4.6	0.0	\$13,685	3.3	1.1
Women	N/A	1	0.0	0.0	\$4,528	4.0	1.0
Women	Total	6,849	100.0	41.6	\$21,379	3.4	1.5
Men	00-19	701	10.5	0.0	\$4,428	2.5	1.6
Men	20-24	758	11.4	0.0	\$15,427	3.0	1.8
Men	25-34	1,414	21.3	0.0	\$31,700	3.3	1.5
Men	35-44	1,188	17.9	0.0	\$43,641	3.5	1.3
Men	45-54	1,372	20.6	0.0	\$48,998	3.4	1.3
Men	55-64	883	13.3	0.0	\$45,200	3.5	1.2
Men	65-Up	335	5.0	0.0	\$23,677	3.2	1.2
Men	N/A	3	0.0	0.0	\$1,335	1.0	1.0
Men	Total	6,654	100.0	40.4	\$34,046	3.3	1.4
N/A	N/A	2,963	100.0	0.0	\$19,869	2.7	1.4
N/A	Total	2,963	100.0	18.0	\$19,869	2.7	1.4
Total	00-19	1,429	8.7	0.0	\$4,281	2.6	1.7
Total	20-24	1,584	9.6	0.0	\$12,970	3.0	1.8
Total	25-34	2,656	16.1	0.0	\$26,271	3.3	1.6
Total	35-44	2,356	14.3	0.0	\$34,974	3.5	1.4
Total	45-54	2,865	17.4	0.0	\$39,122	3.5	1.3
Total	55-64	1,959	11.9	0.0	\$35,627	3.6	1.2
Total	65-Up	650	3.9	0.0	\$18,835	3.3	1.1
Total	N/A	2,967	18.0	0.0	\$19,845	2.7	1.4
Total	Total	16,466	100.0	100.0	\$26,226	3.2	1.4

Note: Persons worked at any time during the year.

County Determination: Based on county of employment in which the person made the most money in the year.

N/A: Represents persons with demographic data that is unavailable.

# Wage Records in Wyoming: Employment and Earnings by Age and Gender with Place of Work in Sheridan County, 2000-2015

## Average Earnings by Age and Gender with Place of Work in Sheridan County in 2008

Gender	Age Group	Number	Age Percent	Gender Percent	Average Annual Wage	Average Quarters Worked	Average Annual Employers
Women	00-19	715	10.3	0.0	\$4,733	2.8	1.8
Women	20-24	816	11.8	0.0	\$11,166	3.1	1.8
Women	25-34	1,286	18.6	0.0	\$22,513	3.4	1.5
Women	35-44	1,154	16.7	0.0	\$28,488	3.6	1.5
Women	45-54	1,491	21.5	0.0	\$32,207	3.6	1.3
Women	55-64	1,138	16.4	0.0	\$30,103	3.6	1.2
Women	65-Up	328	4.7	0.0	\$15,322	3.4	1.2
Women	N/A	2	0.0	0.0	\$4,404	2.5	1.0
Women	Total	6,930	100.0	41.4	\$23,324	3.4	1.5
Men	00-19	697	10.4	0.0	\$5,020	2.6	1.6
Men	20-24	781	11.7	0.0	\$16,318	3.0	1.8
Men	25-34	1,407	21.0	0.0	\$35,003	3.4	1.5
Men	35-44	1,195	17.9	0.0	\$46,141	3.5	1.4
Men	45-54	1,298	19.4	0.0	\$52,190	3.5	1.2
Men	55-64	963	14.4	0.0	\$50,148	3.5	1.2
Men	65-Up	345	5.2	0.0	\$26,318	3.3	1.2
Men	N/A	1	0.0	0.0	\$105	1.0	1.0
Men	Total	6,687	100.0	39.9	\$36,750	3.3	1.4
N/A	N/A	3,134	100.0	0.0	\$21,075	2.7	1.4
N/A	Total	3,134	100.0	18.7	\$21,075	2.7	1.4
Total	00-19	1,412	8.4	0.0	\$4,875	2.7	1.7
Total	20-24	1,597	9.5	0.0	\$13,686	3.0	1.8
Total	25-34	2,693	16.1	0.0	\$29,038	3.4	1.5
Total	35-44	2,349	14.0	0.0	\$37,469	3.5	1.4
Total	45-54	2,789	16.6	0.0	\$41,507	3.6	1.3
Total	55-64	2,101	12.5	0.0	\$39,290	3.5	1.2
Total	65-Up	673	4.0	0.0	\$20,959	3.3	1.2
Total	N/A	3,137	18.7	0.0	\$21,058	2.7	1.4
Total	Total	16,751	100.0	100.0	\$28,263	3.2	1.4

Note: Persons worked at any time during the year.

County Determination: Based on county of employment in which the person made the most money in the year.

N/A: Represents persons with demographic data that is unavailable.

# Wage Records in Wyoming: Employment and Earnings by Age and Gender with Place of Work in Sheridan County, 2000-2015

## Average Earnings by Age and Gender with Place of Work in Sheridan County in 2009

Gender	Age Group	Number	Age Percent	Gender Percent	Average Annual Wage	Average Quarters Worked	Average Annual Employers
Women	00-19	612	9.1	0.0	\$4,367	2.8	1.5
Women	20-24	811	12.0	0.0	\$11,496	3.1	1.7
Women	25-34	1,251	18.6	0.0	\$23,432	3.4	1.5
Women	35-44	1,151	17.1	0.0	\$29,248	3.6	1.3
Women	45-54	1,428	21.2	0.0	\$33,166	3.7	1.3
Women	55-64	1,143	17.0	0.0	\$30,791	3.6	1.2
Women	65-Up	341	5.1	0.0	\$15,795	3.4	1.1
Women	N/A	3	0.0	0.0	\$9,453	2.7	1.0
Women	Total	6,740	100.0	42.7	\$24,176	3.4	1.4
Men	00-19	572	9.0	0.0	\$4,685	2.5	1.4
Men	20-24	715	11.2	0.0	\$14,349	2.9	1.6
Men	25-34	1,378	21.6	0.0	\$32,863	3.3	1.4
Men	35-44	1,166	18.3	0.0	\$45,427	3.5	1.3
Men	45-54	1,243	19.5	0.0	\$49,746	3.5	1.2
Men	55-64	962	15.1	0.0	\$48,805	3.5	1.2
Men	65-Up	348	5.5	0.0	\$26,089	3.2	1.1
Men	N/A	1	0.0	0.0	\$6,058	1.0	1.0
Men	Total	6,385	100.0	40.4	\$35,875	3.3	1.3
N/A	N/A	2,670	100.0	0.0	\$16,958	2.6	1.3
N/A	Total	2,670	100.0	16.9	\$16,958	2.6	1.3
Total	00-19	1,184	7.5	0.0	\$4,520	2.7	1.5
Total	20-24	1,526	9.7	0.0	\$12,833	3.0	1.6
Total	25-34	2,629	16.6	0.0	\$28,375	3.4	1.4
Total	35-44	2,317	14.7	0.0	\$37,390	3.5	1.3
Total	45-54	2,671	16.9	0.0	\$40,882	3.6	1.2
Total	55-64	2,105	13.3	0.0	\$39,024	3.6	1.2
Total	65-Up	689	4.4	0.0	\$20,994	3.3	1.1
Total	N/A	2,674	16.9	0.0	\$16,946	2.6	1.3
Total	Total	15,795	100.0	100.0	\$27,685	3.2	1.3

Note: Persons worked at any time during the year.

County Determination: Based on county of employment in which the person made the most money in the year.

N/A: Represents persons with demographic data that is unavailable.

# Wage Records in Wyoming: Employment and Earnings by Age and Gender with Place of Work in Sheridan County, 2000-2015

## Average Earnings by Age and Gender with Place of Work in Sheridan County in 2010

Gender	Age Group	Number	Age Percent	Gender Percent	Average Annual Wage	Average Quarters Worked	Average Annual Employers
Women	00-19	554	8.3	0.0	\$4,054	2.7	1.5
Women	20-24	768	11.5	0.0	\$10,954	3.1	1.7
Women	25-34	1,295	19.4	0.0	\$22,623	3.4	1.4
Women	35-44	1,135	17.0	0.0	\$29,567	3.5	1.4
Women	45-54	1,410	21.2	0.0	\$32,858	3.7	1.3
Women	55-64	1,167	17.5	0.0	\$32,465	3.7	1.2
Women	65-Up	330	5.0	0.0	\$17,223	3.5	1.1
Women	Total	6,659	100.0	43.9	\$24,540	3.4	1.4
Men	00-19	491	7.9	0.0	\$4,555	2.6	1.4
Men	20-24	707	11.4	0.0	\$13,243	2.9	1.6
Men	25-34	1,302	21.0	0.0	\$33,460	3.4	1.4
Men	35-44	1,167	18.9	0.0	\$46,454	3.5	1.3
Men	45-54	1,192	19.3	0.0	\$51,091	3.5	1.2
Men	55-64	977	15.8	0.0	\$52,343	3.6	1.1
Men	65-Up	351	5.7	0.0	\$26,660	3.3	1.1
Men	Total	6,187	100.0	40.8	\$37,300	3.3	1.3
N/A	N/A	2,327	100.0	0.0	\$16,569	2.7	1.3
N/A	Total	2,327	100.0	15.3	\$16,569	2.7	1.3
Total	00-19	1,045	6.9	0.0	\$4,289	2.6	1.4
Total	20-24	1,475	9.7	0.0	\$12,051	3.0	1.7
Total	25-34	2,597	17.1	0.0	\$28,056	3.4	1.4
Total	35-44	2,302	15.2	0.0	\$38,128	3.5	1.3
Total	45-54	2,602	17.1	0.0	\$41,211	3.6	1.2
Total	55-64	2,144	14.1	0.0	\$41,523	3.6	1.2
Total	65-Up	681	4.5	0.0	\$22,087	3.4	1.1
Total	N/A	2,327	15.3	0.0	\$16,569	2.7	1.3
Total	Total	15,173	100.0	100.0	\$28,521	3.3	1.3

Note: Persons worked at any time during the year.

County Determination: Based on county of employment in which the person made the most money in the year.

N/A: Represents persons with demographic data that is unavailable.

# Wage Records in Wyoming: Employment and Earnings by Age and Gender with Place of Work in Sheridan County, 2000-2015

## Average Earnings by Age and Gender with Place of Work in Sheridan County in 2011

Gender	Age Group	Number	Age Percent	Gender Percent	Average Annual Wage	Average Quarters Worked	Average Annual Employers
Women	00-19	539	8.1	0.0	\$4,091	2.7	1.5
Women	20-24	754	11.3	0.0	\$11,075	3.1	1.7
Women	25-34	1,305	19.5	0.0	\$22,689	3.4	1.4
Women	35-44	1,170	17.5	0.0	\$30,491	3.5	1.4
Women	45-54	1,344	20.1	0.0	\$32,540	3.7	1.3
Women	55-64	1,217	18.2	0.0	\$32,978	3.6	1.2
Women	65-Up	361	5.4	0.0	\$16,745	3.4	1.1
Women	Total	6,690	100.0	44.1	\$24,776	3.4	1.4
Men	00-19	515	8.3	0.0	\$4,411	2.5	1.4
Men	20-24	695	11.2	0.0	\$13,229	2.9	1.6
Men	25-34	1,260	20.3	0.0	\$33,288	3.3	1.4
Men	35-44	1,205	19.4	0.0	\$46,349	3.5	1.3
Men	45-54	1,138	18.3	0.0	\$52,353	3.6	1.2
Men	55-64	1,025	16.5	0.0	\$50,067	3.5	1.2
Men	65-Up	381	6.1	0.0	\$28,424	3.3	1.1
Men	Total	6,219	100.0	41.0	\$37,142	3.3	1.3
N/A	N/A	2,257	100.0	0.0	\$17,370	2.7	1.3
N/A	Total	2,257	100.0	14.9	\$17,370	2.7	1.3
Total	00-19	1,054	6.9	0.0	\$4,247	2.6	1.5
Total	20-24	1,449	9.6	0.0	\$12,108	3.0	1.6
Total	25-34	2,565	16.9	0.0	\$27,896	3.4	1.4
Total	35-44	2,375	15.7	0.0	\$38,537	3.5	1.3
Total	45-54	2,482	16.4	0.0	\$41,624	3.6	1.2
Total	55-64	2,242	14.8	0.0	\$40,791	3.6	1.2
Total	65-Up	742	4.9	0.0	\$22,742	3.3	1.1
Total	N/A	2,257	14.9	0.0	\$17,370	2.7	1.3
Total	Total	15,166	100.0	100.0	\$28,745	3.3	1.3

Note: Persons worked at any time during the year.

County Determination: Based on county of employment in which the person made the most money in the year.

N/A: Represents persons with demographic data that is unavailable.

# Wage Records in Wyoming: Employment and Earnings by Age and Gender with Place of Work in Sheridan County, 2000-2015

## Average Earnings by Age and Gender with Place of Work in Sheridan County in 2012

Gender	Age Group	Number	Age Percent	Gender Percent	Average Annual Wage	Average Quarters Worked	Average Annual Employers
Women	00-19	558	8.2	0.0	\$4,234	2.6	1.6
Women	20-24	770	11.4	0.0	\$11,031	3.0	1.8
Women	25-34	1,327	19.6	0.0	\$23,697	3.4	1.5
Women	35-44	1,207	17.8	0.0	\$31,862	3.6	1.4
Women	45-54	1,279	18.9	0.0	\$33,161	3.6	1.3
Women	55-64	1,263	18.7	0.0	\$34,139	3.7	1.2
Women	65-Up	361	5.3	0.0	\$18,254	3.4	1.1
Women	N/A	1	0.0	0.0	\$725	1.0	1.0
Women	Total	6,766	100.0	44.2	\$25,551	3.4	1.4
Men	00-19	526	8.4	0.0	\$4,658	2.6	1.5
Men	20-24	744	11.8	0.0	\$13,907	3.0	1.6
Men	25-34	1,261	20.0	0.0	\$31,618	3.3	1.4
Men	35-44	1,202	19.1	0.0	\$48,280	3.5	1.3
Men	45-54	1,109	17.6	0.0	\$52,985	3.5	1.2
Men	55-64	1,068	17.0	0.0	\$50,813	3.6	1.2
Men	65-Up	387	6.1	0.0	\$40,113	3.4	1.2
Men	N/A	1	0.0	0.0	\$3,225	1.0	1.0
Men	Total	6,298	100.0	41.2	\$37,989	3.3	1.3
N/A	N/A	2,240	100.0	0.0	\$18,410	2.7	1.3
N/A	Total	2,240	100.0	14.6	\$18,410	2.7	1.3
Total	00-19	1,084	7.1	0.0	\$4,440	2.6	1.5
Total	20-24	1,514	9.9	0.0	\$12,444	3.0	1.7
Total	25-34	2,588	16.9	0.0	\$27,556	3.3	1.5
Total	35-44	2,409	15.7	0.0	\$40,054	3.5	1.4
Total	45-54	2,388	15.6	0.0	\$42,368	3.6	1.2
Total	55-64	2,331	15.2	0.0	\$41,778	3.6	1.2
Total	65-Up	748	4.9	0.0	\$29,563	3.4	1.1
Total	N/A	2,242	14.6	0.0	\$18,396	2.7	1.3
Total	Total	15,304	100.0	100.0	\$29,625	3.3	1.4

Note: Persons worked at any time during the year.

County Determination: Based on county of employment in which the person made the most money in the year.

N/A: Represents persons with demographic data that is unavailable.

# Wage Records in Wyoming: Employment and Earnings by Age and Gender with Place of Work in Sheridan County, 2000-2015

## Average Earnings by Age and Gender with Place of Work in Sheridan County in 2013

Gender	Age Group	Number	Age Percent	Gender Percent	Average Annual Wage	Average Quarters Worked	Average Annual Employers
Women	00-19	530	7.8	0.0	\$4,234	2.7	1.5
Women	20-24	780	11.5	0.0	\$12,041	3.1	1.7
Women	25-34	1,350	19.9	0.0	\$23,608	3.4	1.5
Women	35-44	1,184	17.5	0.0	\$32,284	3.6	1.4
Women	45-54	1,272	18.8	0.0	\$33,591	3.7	1.3
Women	55-64	1,266	18.7	0.0	\$33,883	3.6	1.2
Women	65-Up	397	5.9	0.0	\$18,071	3.4	1.1
Women	Total	6,779	100.0	43.9	\$25,745	3.4	1.4
Men	00-19	532	8.4	0.0	\$4,718	2.6	1.5
Men	20-24	764	12.0	0.0	\$14,610	3.1	1.8
Men	25-34	1,265	19.9	0.0	\$31,427	3.3	1.4
Men	35-44	1,213	19.1	0.0	\$48,035	3.5	1.3
Men	45-54	1,082	17.1	0.0	\$53,651	3.6	1.2
Men	55-64	1,053	16.6	0.0	\$53,681	3.6	1.2
Men	65-Up	430	6.8	0.0	\$31,455	3.2	1.1
Men	N/A	3	0.0	0.0	\$1,108	1.0	1.0
Men	Total	6,342	100.0	41.0	\$37,811	3.3	1.4
N/A	N/A	2,334	100.0	0.0	\$17,845	2.7	1.3
N/A	Total	2,334	100.0	15.1	\$17,845	2.7	1.3
Total	00-19	1,062	6.9	0.0	\$4,476	2.6	1.5
Total	20-24	1,544	10.0	0.0	\$13,312	3.1	1.7
Total	25-34	2,615	16.9	0.0	\$27,391	3.3	1.4
Total	35-44	2,397	15.5	0.0	\$40,254	3.5	1.4
Total	45-54	2,354	15.2	0.0	\$42,811	3.6	1.3
Total	55-64	2,319	15.0	0.0	\$42,873	3.6	1.2
Total	65-Up	827	5.4	0.0	\$25,030	3.3	1.1
Total	N/A	2,337	15.1	0.0	\$17,823	2.7	1.3
Total	Total	15,455	100.0	100.0	\$29,504	3.3	1.4

Note: Persons worked at any time during the year.

County Determination: Based on county of employment in which the person made the most money in the year.

N/A: Represents persons with demographic data that is unavailable.

# Wage Records in Wyoming: Employment and Earnings by Age and Gender with Place of Work in Sheridan County, 2000-2015

## Average Earnings by Age and Gender with Place of Work in Sheridan County in 2014

Gender	Age Group	Number	Age Percent	Gender Percent	Average Annual Wage	Average Quarters Worked	Average Annual Employers
Women	00-19	569	8.4	0.0	\$4,738	2.8	1.7
Women	20-24	779	11.4	0.0	\$12,447	3.1	1.8
Women	25-34	1,344	19.7	0.0	\$24,938	3.4	1.5
Women	35-44	1,203	17.7	0.0	\$33,084	3.6	1.5
Women	45-54	1,241	18.2	0.0	\$34,481	3.6	1.3
Women	55-64	1,248	18.3	0.0	\$33,556	3.6	1.2
Women	65-Up	426	6.3	0.0	\$18,758	3.3	1.1
Women	N/A	2	0.0	0.0	\$6,583	1.0	1.0
Women	<b>Total</b>	<b>6,812</b>	<b>100.0</b>	<b>42.7</b>	<b>\$26,186</b>	<b>3.4</b>	<b>1.4</b>
Men	00-19	557	8.5	0.0	\$5,012	2.6	1.6
Men	20-24	824	12.6	0.0	\$15,841	3.1	1.7
Men	25-34	1,318	20.1	0.0	\$32,540	3.3	1.5
Men	35-44	1,227	18.7	0.0	\$48,991	3.5	1.3
Men	45-54	1,119	17.1	0.0	\$54,341	3.6	1.2
Men	55-64	1,073	16.4	0.0	\$53,177	3.5	1.2
Men	65-Up	442	6.7	0.0	\$33,313	3.3	1.1
Men	<b>Total</b>	<b>6,560</b>	<b>100.0</b>	<b>41.1</b>	<b>\$38,329</b>	<b>3.3</b>	<b>1.4</b>
N/A	N/A	2,579	100.0	0.0	\$19,372	2.6	1.3
N/A	<b>Total</b>	<b>2,579</b>	<b>100.0</b>	<b>16.2</b>	<b>\$19,372</b>	<b>2.6</b>	<b>1.3</b>
Total	00-19	1,126	7.1	0.0	\$4,874	2.7	1.6
Total	20-24	1,603	10.0	0.0	\$14,192	3.1	1.8
Total	25-34	2,662	16.7	0.0	\$28,702	3.4	1.5
Total	35-44	2,430	15.2	0.0	\$41,116	3.5	1.4
Total	45-54	2,360	14.8	0.0	\$43,898	3.6	1.3
Total	55-64	2,321	14.6	0.0	\$42,627	3.6	1.2
Total	65-Up	868	5.4	0.0	\$26,170	3.3	1.1
Total	N/A	2,581	16.2	0.0	\$19,362	2.6	1.3
<b>Total</b>	<b>Total</b>	<b>15,951</b>	<b>100.0</b>	<b>100.0</b>	<b>\$30,078</b>	<b>3.3</b>	<b>1.4</b>

Note: Persons worked at any time during the year.

County Determination: Based on county of employment in which the person made the most money in the year.

N/A: Represents persons with demographic data that is unavailable.



# Wage Records in Wyoming: Employment and Earnings by Age and Gender with Place of Work in Sheridan County, 2000-2015

## Average Earnings by Age and Gender with Place of Work in Sheridan County in 2015

Gender	Age Group	Number	Age Percent	Gender Percent	Average Annual Wage	Average Quarters Worked	Average Annual Employers
Women	00-19	558	8.2	0.0	\$5,492	2.9	1.7
Women	20-24	727	10.7	0.0	\$12,778	3.2	1.8
Women	25-34	1,349	19.9	0.0	\$26,032	3.5	1.5
Women	35-44	1,248	18.4	0.0	\$33,604	3.6	1.4
Women	45-54	1,222	18.0	0.0	\$35,873	3.6	1.3
Women	55-64	1,241	18.3	0.0	\$35,190	3.6	1.2
Women	65-Up	444	6.5	0.0	\$21,380	3.4	1.1
Women	N/A	1	0.0	0.0	\$787	1.0	1.0
Women	Total	6,790	100.0	43.2	\$27,453	3.5	1.4
Men	00-19	518	8.0	0.0	\$5,813	2.7	1.6
Men	20-24	811	12.6	0.0	\$16,659	3.2	1.7
Men	25-34	1,290	20.0	0.0	\$33,609	3.3	1.5
Men	35-44	1,225	19.0	0.0	\$50,627	3.6	1.3
Men	45-54	1,089	16.9	0.0	\$54,552	3.6	1.3
Men	55-64	1,050	16.3	0.0	\$52,455	3.6	1.2
Men	65-Up	476	7.4	0.0	\$35,778	3.3	1.1
Men	Total	6,459	100.0	41.1	\$39,234	3.4	1.4
N/A	N/A	2,470	100.0	0.0	\$17,979	2.6	1.3
N/A	Total	2,470	100.0	15.7	\$17,979	2.6	1.3
Total	00-19	1,076	6.8	0.0	\$5,646	2.8	1.7
Total	20-24	1,538	9.8	0.0	\$14,824	3.2	1.8
Total	25-34	2,639	16.8	0.0	\$29,736	3.4	1.5
Total	35-44	2,473	15.7	0.0	\$42,036	3.6	1.4
Total	45-54	2,311	14.7	0.0	\$44,675	3.6	1.3
Total	55-64	2,291	14.6	0.0	\$43,103	3.6	1.2
Total	65-Up	920	5.9	0.0	\$28,829	3.4	1.1
Total	N/A	2,471	15.7	0.0	\$17,972	2.6	1.3
Total	Total	15,719	100.0	100.0	\$30,805	3.3	1.4

Note: Persons worked at any time during the year.

County Determination: Based on county of employment in which the person made the most money in the year.

N/A: Represents persons with demographic data that is unavailable.