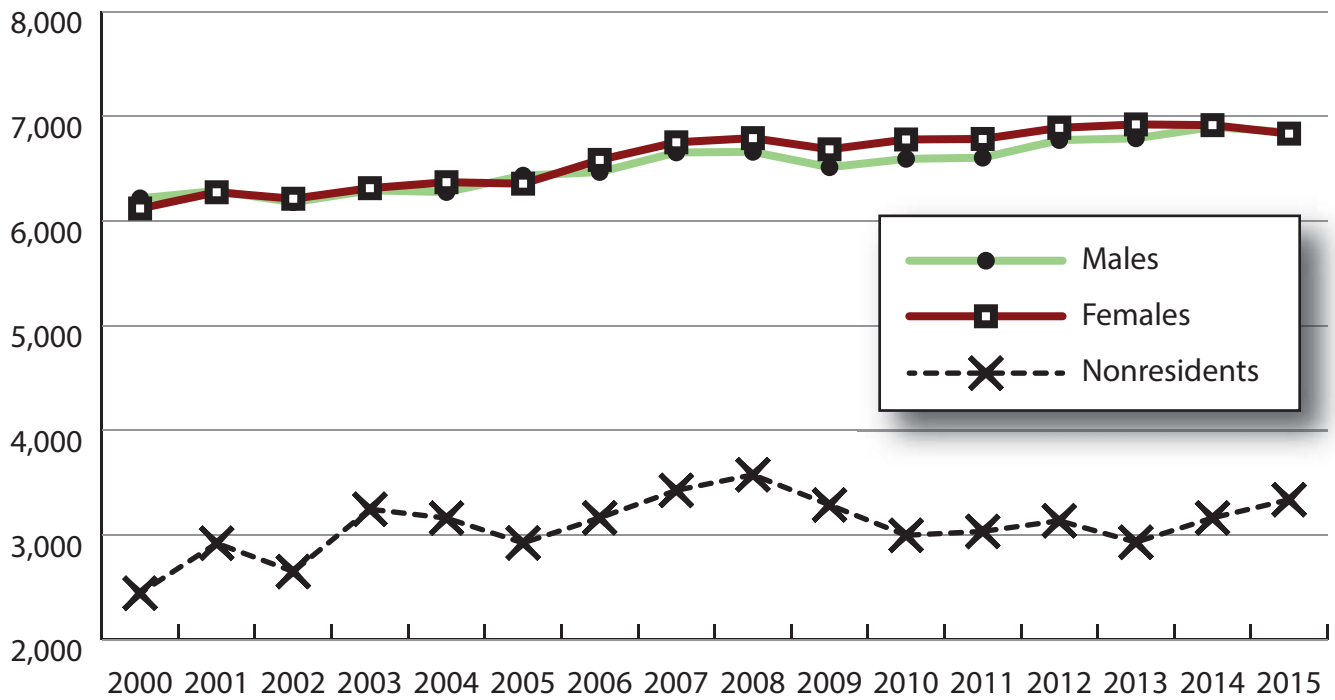
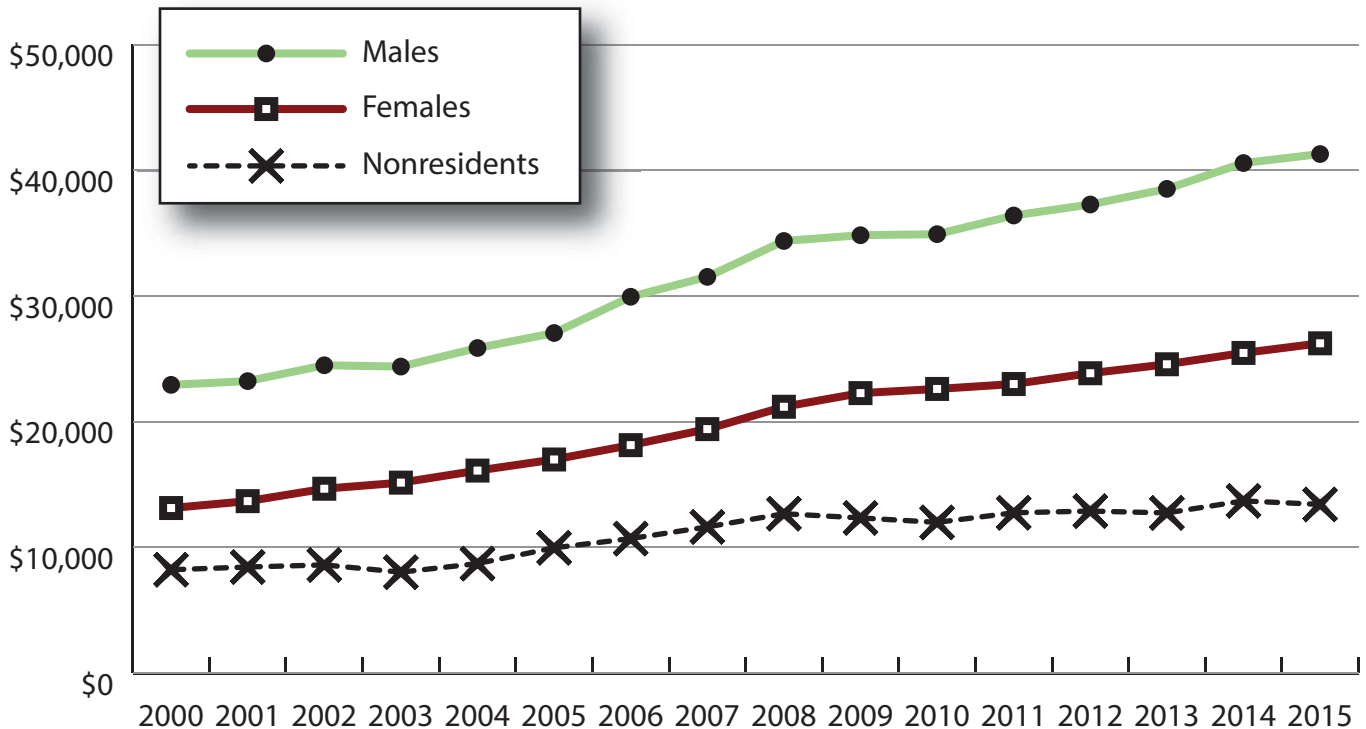


# Wage Records in Wyoming: Employment and Earnings by Age and Gender with Place of Work in Park County, 2000-2015

Total Number of Persons Working in Park County at Any Time by Gender, 2000-2015



Average Annual Earnings for Persons Working in Park County at Any Time by Gender, 2000-2015



# Wage Records in Wyoming: Employment and Earnings by Age and Gender with Place of Work in Park County, 2000-2015

## Average Earnings by Age and Gender with Place of Work in Park County in 2000

Gender	Age Group	Number	Age Percent	Gender Percent	Average Annual Wage	Average Quarters Worked	Average Annual Employers
Women	00-19	807	13.2	0.0	\$2,942	2.6	1.7
Women	20-24	731	11.9	0.0	\$6,506	2.9	1.8
Women	25-34	958	15.7	0.0	\$12,713	3.2	1.6
Women	35-44	1,435	23.5	0.0	\$17,750	3.5	1.5
Women	45-54	1,322	21.6	0.0	\$18,624	3.5	1.4
Women	55-64	650	10.6	0.0	\$14,384	3.3	1.3
Women	65-Up	215	3.5	0.0	\$7,576	3.0	1.2
Women	N/A	1	0.0	0.0	\$266	1.0	1.0
Women	Total	6,119	100.0	41.4	\$13,136	3.2	1.5
Men	00-19	783	12.6	0.0	\$3,383	2.5	1.5
Men	20-24	765	12.3	0.0	\$8,566	2.8	1.7
Men	25-34	1,101	17.7	0.0	\$19,710	3.2	1.5
Men	35-44	1,354	21.8	0.0	\$31,684	3.5	1.4
Men	45-54	1,268	20.4	0.0	\$35,145	3.5	1.3
Men	55-64	701	11.3	0.0	\$29,181	3.4	1.2
Men	65-Up	242	3.9	0.0	\$15,536	2.9	1.2
Men	N/A	2	0.0	0.0	\$3,100	3.0	1.5
Men	Total	6,216	100.0	42.1	\$22,939	3.2	1.4
N/A	N/A	2,445	100.0	0.0	\$8,225	2.3	1.3
N/A	Total	2,445	100.0	16.5	\$8,225	2.3	1.3
Total	00-19	1,590	10.8	0.0	\$3,160	2.5	1.6
Total	20-24	1,496	10.1	0.0	\$7,559	2.8	1.8
Total	25-34	2,059	13.9	0.0	\$16,454	3.2	1.5
Total	35-44	2,789	18.9	0.0	\$24,515	3.5	1.4
Total	45-54	2,590	17.5	0.0	\$26,712	3.5	1.3
Total	55-64	1,351	9.1	0.0	\$22,062	3.3	1.3
Total	65-Up	457	3.1	0.0	\$11,791	3.0	1.2
Total	N/A	2,448	16.6	0.0	\$8,218	2.3	1.3
Total	Total	14,780	100.0	100.0	\$16,446	3.1	1.4

Note: Persons worked at any time during the year.

County Determination: Based on county of employment in which the person made the most money in the year.

N/A: Represents persons with demographic data that is unavailable.

# Wage Records in Wyoming: Employment and Earnings by Age and Gender with Place of Work in Park County, 2000-2015

## Average Earnings by Age and Gender with Place of Work in Park County in 2001

Gender	Age Group	Number	Age Percent	Gender Percent	Average Annual Wage	Average Quarters Worked	Average Annual Employers
Women	00-19	833	13.3	0.0	\$3,171	2.6	1.6
Women	20-24	718	11.4	0.0	\$6,956	2.9	1.8
Women	25-34	1,010	16.1	0.0	\$12,952	3.2	1.5
Women	35-44	1,370	21.8	0.0	\$18,309	3.4	1.4
Women	45-54	1,419	22.6	0.0	\$19,436	3.5	1.3
Women	55-64	695	11.1	0.0	\$15,649	3.4	1.2
Women	65-Up	226	3.6	0.0	\$6,978	3.0	1.2
Women	N/A	3	0.0	0.0	\$6,548	3.0	2.7
Women	Total	6,274	100.0	40.5	\$13,684	3.2	1.5
Men	00-19	745	11.8	0.0	\$3,496	2.4	1.6
Men	20-24	802	12.8	0.0	\$9,431	2.8	1.7
Men	25-34	1,112	17.7	0.0	\$20,611	3.2	1.5
Men	35-44	1,307	20.8	0.0	\$31,814	3.3	1.3
Men	45-54	1,310	20.8	0.0	\$35,017	3.5	1.3
Men	55-64	753	12.0	0.0	\$29,349	3.3	1.2
Men	65-Up	254	4.0	0.0	\$13,292	2.8	1.2
Men	N/A	4	0.1	0.0	\$17,887	2.3	1.0
Men	Total	6,287	100.0	40.6	\$23,237	3.1	1.4
N/A	N/A	2,922	100.0	0.0	\$8,442	2.1	1.3
N/A	Total	2,922	100.0	18.9	\$8,442	2.1	1.3
Total	00-19	1,578	10.2	0.0	\$3,324	2.5	1.6
Total	20-24	1,520	9.8	0.0	\$8,262	2.8	1.8
Total	25-34	2,122	13.7	0.0	\$16,966	3.2	1.5
Total	35-44	2,677	17.3	0.0	\$24,903	3.4	1.4
Total	45-54	2,729	17.6	0.0	\$26,916	3.5	1.3
Total	55-64	1,448	9.4	0.0	\$22,774	3.4	1.2
Total	65-Up	480	3.1	0.0	\$10,319	2.9	1.2
Total	N/A	2,929	18.9	0.0	\$8,453	2.1	1.3
Total	Total	15,483	100.0	100.0	\$16,574	3.0	1.4

Note: Persons worked at any time during the year.

County Determination: Based on county of employment in which the person made the most money in the year.

N/A: Represents persons with demographic data that is unavailable.

# Wage Records in Wyoming: Employment and Earnings by Age and Gender with Place of Work in Park County, 2000-2015

## Average Earnings by Age and Gender with Place of Work in Park County in 2002

Gender	Age Group	Number	Age Percent	Gender Percent	Average Annual Wage	Average Quarters Worked	Average Annual Employers
Women	00-19	752	12.1	0.0	\$3,043	2.6	1.6
Women	20-24	741	11.9	0.0	\$7,051	2.9	1.7
Women	25-34	1,003	16.1	0.0	\$13,834	3.2	1.5
Women	35-44	1,303	21.0	0.0	\$19,344	3.5	1.4
Women	45-54	1,429	23.0	0.0	\$20,874	3.6	1.3
Women	55-64	757	12.2	0.0	\$16,950	3.4	1.2
Women	65-Up	227	3.7	0.0	\$8,317	3.0	1.1
Women	Total	6,212	100.0	41.3	\$14,672	3.3	1.4
Men	00-19	736	11.9	0.0	\$3,345	2.5	1.5
Men	20-24	750	12.1	0.0	\$9,765	2.8	1.7
Men	25-34	1,137	18.4	0.0	\$21,668	3.2	1.4
Men	35-44	1,198	19.4	0.0	\$32,739	3.4	1.3
Men	45-54	1,295	21.0	0.0	\$37,147	3.5	1.2
Men	55-64	804	13.0	0.0	\$31,980	3.4	1.2
Men	65-Up	253	4.1	0.0	\$15,278	3.0	1.2
Men	N/A	6	0.1	0.0	\$8,251	1.3	1.0
Men	Total	6,179	100.0	41.1	\$24,498	3.2	1.4
N/A	N/A	2,652	100.0	0.0	\$8,609	2.3	1.3
N/A	Total	2,652	100.0	17.6	\$8,609	2.3	1.3
Total	00-19	1,488	9.9	0.0	\$3,193	2.5	1.6
Total	20-24	1,491	9.9	0.0	\$8,416	2.8	1.7
Total	25-34	2,140	14.2	0.0	\$17,996	3.2	1.5
Total	35-44	2,501	16.6	0.0	\$25,760	3.4	1.3
Total	45-54	2,724	18.1	0.0	\$28,611	3.6	1.3
Total	55-64	1,561	10.4	0.0	\$24,691	3.4	1.2
Total	65-Up	480	3.2	0.0	\$11,986	3.0	1.2
Total	N/A	2,658	17.7	0.0	\$8,608	2.3	1.3
Total	Total	15,043	100.0	100.0	\$17,639	3.1	1.4

Note: Persons worked at any time during the year.

County Determination: Based on county of employment in which the person made the most money in the year.

N/A: Represents persons with demographic data that is unavailable.

# Wage Records in Wyoming: Employment and Earnings by Age and Gender with Place of Work in Park County, 2000-2015

## Average Earnings by Age and Gender with Place of Work in Park County in 2003

Gender	Age Group	Number	Age Percent	Gender Percent	Average Annual Wage	Average Quarters Worked	Average Annual Employers
Women	00-19	764	12.1	0.0	\$3,076	2.5	1.7
Women	20-24	776	12.3	0.0	\$7,781	2.9	1.7
Women	25-34	990	15.7	0.0	\$14,283	3.2	1.5
Women	35-44	1,239	19.6	0.0	\$19,479	3.5	1.4
Women	45-54	1,473	23.3	0.0	\$21,741	3.6	1.3
Women	55-64	801	12.7	0.0	\$18,451	3.5	1.2
Women	65-Up	268	4.2	0.0	\$8,273	3.1	1.1
Women	N/A	2	0.0	0.0	\$956	1.5	1.0
Women	Total	6,313	100.0	39.8	\$15,157	3.3	1.4
Men	00-19	713	11.3	0.0	\$3,221	2.4	1.5
Men	20-24	758	12.0	0.0	\$9,646	2.8	1.7
Men	25-34	1,141	18.1	0.0	\$21,028	3.2	1.5
Men	35-44	1,181	18.8	0.0	\$32,439	3.4	1.3
Men	45-54	1,317	20.9	0.0	\$37,827	3.5	1.2
Men	55-64	847	13.5	0.0	\$31,881	3.4	1.2
Men	65-Up	329	5.2	0.0	\$14,375	2.9	1.2
Men	N/A	6	0.1	0.0	\$3,390	1.8	1.3
Men	Total	6,292	100.0	39.7	\$24,393	3.2	1.4
N/A	N/A	3,247	100.0	0.0	\$8,032	2.3	1.3
N/A	Total	3,247	100.0	20.5	\$8,032	2.3	1.3
Total	00-19	1,477	9.3	0.0	\$3,146	2.5	1.6
Total	20-24	1,534	9.7	0.0	\$8,702	2.8	1.7
Total	25-34	2,131	13.4	0.0	\$17,894	3.2	1.5
Total	35-44	2,420	15.3	0.0	\$25,804	3.4	1.3
Total	45-54	2,790	17.6	0.0	\$29,334	3.5	1.2
Total	55-64	1,648	10.4	0.0	\$25,354	3.4	1.2
Total	65-Up	597	3.8	0.0	\$11,636	3.0	1.2
Total	N/A	3,255	20.5	0.0	\$8,019	2.3	1.3
Total	Total	15,852	100.0	100.0	\$17,364	3.0	1.4

Note: Persons worked at any time during the year.

County Determination: Based on county of employment in which the person made the most money in the year.

N/A: Represents persons with demographic data that is unavailable.

# Wage Records in Wyoming: Employment and Earnings by Age and Gender with Place of Work in Park County, 2000-2015

## Average Earnings by Age and Gender with Place of Work in Park County in 2004

Gender	Age Group	Number	Age Percent	Gender Percent	Average Annual Wage	Average Quarters Worked	Average Annual Employers
Women	00-19	756	11.9	0.0	\$2,985	2.6	1.6
Women	20-24	802	12.6	0.0	\$7,951	3.0	1.8
Women	25-34	963	15.1	0.0	\$15,389	3.3	1.5
Women	35-44	1,211	19.0	0.0	\$20,178	3.5	1.3
Women	45-54	1,493	23.4	0.0	\$23,399	3.6	1.3
Women	55-64	882	13.8	0.0	\$19,909	3.5	1.2
Women	65-Up	261	4.1	0.0	\$8,729	3.0	1.1
Women	N/A	2	0.0	0.0	\$1,460	1.5	1.0
Women	Total	6,370	100.0	40.3	\$16,117	3.3	1.4
Men	00-19	709	11.3	0.0	\$3,539	2.5	1.5
Men	20-24	787	12.5	0.0	\$11,114	2.9	1.7
Men	25-34	1,113	17.7	0.0	\$21,737	3.3	1.5
Men	35-44	1,131	18.0	0.0	\$34,700	3.5	1.3
Men	45-54	1,320	21.0	0.0	\$39,879	3.5	1.2
Men	55-64	861	13.7	0.0	\$34,233	3.5	1.2
Men	65-Up	351	5.6	0.0	\$15,789	3.0	1.2
Men	N/A	4	0.1	0.0	\$5,939	1.8	1.0
Men	Total	6,276	100.0	39.7	\$25,872	3.2	1.4
N/A	N/A	3,162	100.0	0.0	\$8,717	2.3	1.3
N/A	Total	3,162	100.0	20.0	\$8,717	2.3	1.3
Total	00-19	1,465	9.3	0.0	\$3,253	2.5	1.6
Total	20-24	1,589	10.1	0.0	\$9,517	2.9	1.8
Total	25-34	2,076	13.1	0.0	\$18,792	3.3	1.5
Total	35-44	2,342	14.8	0.0	\$27,191	3.5	1.3
Total	45-54	2,813	17.8	0.0	\$31,133	3.5	1.3
Total	55-64	1,743	11.0	0.0	\$26,985	3.5	1.2
Total	65-Up	612	3.9	0.0	\$12,778	3.0	1.1
Total	N/A	3,168	20.0	0.0	\$8,708	2.3	1.3
Total	Total	15,808	100.0	100.0	\$18,510	3.1	1.4

Note: Persons worked at any time during the year.

County Determination: Based on county of employment in which the person made the most money in the year.

N/A: Represents persons with demographic data that is unavailable.

# Wage Records in Wyoming: Employment and Earnings by Age and Gender with Place of Work in Park County, 2000-2015

## Average Earnings by Age and Gender with Place of Work in Park County in 2005

Gender	Age Group	Number	Age Percent	Gender Percent	Average Annual Wage	Average Quarters Worked	Average Annual Employers
Women	00-19	684	10.8	0.0	\$3,269	2.6	1.6
Women	20-24	825	13.0	0.0	\$7,989	2.9	1.8
Women	25-34	996	15.7	0.0	\$16,212	3.3	1.5
Women	35-44	1,136	17.9	0.0	\$21,009	3.5	1.4
Women	45-54	1,515	23.8	0.0	\$24,438	3.6	1.3
Women	55-64	918	14.4	0.0	\$21,071	3.5	1.2
Women	65-Up	280	4.4	0.0	\$9,999	3.1	1.1
Women	N/A	2	0.0	0.0	\$17,654	2.5	1.0
Women	Total	6,356	100.0	40.4	\$16,999	3.3	1.4
Men	00-19	741	11.5	0.0	\$3,810	2.5	1.5
Men	20-24	819	12.7	0.0	\$11,385	2.9	1.7
Men	25-34	1,104	17.2	0.0	\$23,527	3.3	1.5
Men	35-44	1,104	17.2	0.0	\$36,521	3.5	1.3
Men	45-54	1,366	21.2	0.0	\$41,060	3.6	1.2
Men	55-64	916	14.2	0.0	\$35,914	3.4	1.2
Men	65-Up	378	5.9	0.0	\$17,627	3.0	1.2
Men	N/A	5	0.1	0.0	\$2,386	1.4	1.0
Men	Total	6,433	100.0	40.9	\$27,064	3.3	1.4
N/A	N/A	2,925	100.0	0.0	\$9,970	2.5	1.3
N/A	Total	2,925	100.0	18.6	\$9,970	2.5	1.3
Total	00-19	1,425	9.1	0.0	\$3,550	2.6	1.6
Total	20-24	1,644	10.5	0.0	\$9,681	2.9	1.8
Total	25-34	2,100	13.4	0.0	\$20,058	3.3	1.5
Total	35-44	2,240	14.3	0.0	\$28,654	3.5	1.3
Total	45-54	2,881	18.3	0.0	\$32,319	3.6	1.3
Total	55-64	1,834	11.7	0.0	\$28,485	3.5	1.2
Total	65-Up	658	4.2	0.0	\$14,381	3.0	1.1
Total	N/A	2,932	18.7	0.0	\$9,962	2.5	1.3
Total	Total	15,714	100.0	100.0	\$19,811	3.1	1.4

Note: Persons worked at any time during the year.

County Determination: Based on county of employment in which the person made the most money in the year.

N/A: Represents persons with demographic data that is unavailable.

# Wage Records in Wyoming: Employment and Earnings by Age and Gender with Place of Work in Park County, 2000-2015

## Average Earnings by Age and Gender with Place of Work in Park County in 2006

Gender	Age Group	Number	Age Percent	Gender Percent	Average Annual Wage	Average Quarters Worked	Average Annual Employers
Women	00-19	727	11.0	0.0	\$3,253	2.6	1.7
Women	20-24	837	12.7	0.0	\$8,697	3.0	1.8
Women	25-34	1,051	16.0	0.0	\$17,393	3.3	1.5
Women	35-44	1,151	17.5	0.0	\$22,511	3.5	1.4
Women	45-54	1,538	23.4	0.0	\$26,178	3.6	1.3
Women	55-64	976	14.8	0.0	\$22,538	3.5	1.2
Women	65-Up	301	4.6	0.0	\$11,004	3.1	1.1
Women	N/A	2	0.0	0.0	\$7,896	1.0	1.0
Women	Total	6,583	100.0	40.6	\$18,141	3.3	1.4
Men	00-19	739	11.4	0.0	\$3,832	2.5	1.5
Men	20-24	782	12.1	0.0	\$12,348	2.9	1.7
Men	25-34	1,142	17.7	0.0	\$26,361	3.3	1.5
Men	35-44	1,102	17.0	0.0	\$38,996	3.5	1.3
Men	45-54	1,352	20.9	0.0	\$47,528	3.6	1.2
Men	55-64	959	14.8	0.0	\$37,134	3.5	1.2
Men	65-Up	389	6.0	0.0	\$21,186	3.1	1.2
Men	N/A	2	0.0	0.0	\$1,261	1.0	1.0
Men	Total	6,467	100.0	39.9	\$29,949	3.3	1.4
N/A	N/A	3,165	100.0	0.0	\$10,704	2.4	1.3
N/A	Total	3,165	100.0	19.5	\$10,704	2.4	1.3
Total	00-19	1,466	9.0	0.0	\$3,545	2.6	1.6
Total	20-24	1,619	10.0	0.0	\$10,461	2.9	1.8
Total	25-34	2,193	13.5	0.0	\$22,063	3.3	1.5
Total	35-44	2,253	13.9	0.0	\$30,574	3.5	1.4
Total	45-54	2,890	17.8	0.0	\$36,166	3.6	1.3
Total	55-64	1,935	11.9	0.0	\$29,772	3.5	1.2
Total	65-Up	690	4.3	0.0	\$16,744	3.1	1.2
Total	N/A	3,169	19.5	0.0	\$10,696	2.4	1.3
Total	Total	16,215	100.0	100.0	\$21,399	3.1	1.4

Note: Persons worked at any time during the year.

County Determination: Based on county of employment in which the person made the most money in the year.

N/A: Represents persons with demographic data that is unavailable.



# Wage Records in Wyoming: Employment and Earnings by Age and Gender with Place of Work in Park County, 2000-2015

## Average Earnings by Age and Gender with Place of Work in Park County in 2007

Gender	Age Group	Number	Age Percent	Gender Percent	Average Annual Wage	Average Quarters Worked	Average Annual Employers
Women	00-19	754	11.2	0.0	\$3,720	2.7	1.6
Women	20-24	857	12.7	0.0	\$8,638	2.9	1.8
Women	25-34	1,128	16.7	0.0	\$18,063	3.3	1.5
Women	35-44	1,123	16.6	0.0	\$23,850	3.5	1.4
Women	45-54	1,548	22.9	0.0	\$28,192	3.6	1.3
Women	55-64	1,014	15.0	0.0	\$25,735	3.6	1.2
Women	65-Up	326	4.8	0.0	\$12,230	3.2	1.1
Women	N/A	1	0.0	0.0	\$1,914	1.0	1.0
Women	Total	6,751	100.0	40.1	\$19,418	3.3	1.4
Men	00-19	772	11.6	0.0	\$4,359	2.6	1.6
Men	20-24	804	12.1	0.0	\$12,958	2.9	1.6
Men	25-34	1,201	18.0	0.0	\$27,972	3.3	1.5
Men	35-44	1,108	16.7	0.0	\$40,744	3.5	1.3
Men	45-54	1,342	20.2	0.0	\$51,035	3.6	1.2
Men	55-64	1,009	15.2	0.0	\$38,525	3.5	1.2
Men	65-Up	416	6.3	0.0	\$23,871	3.1	1.2
Men	N/A	2	0.0	0.0	\$1,089	1.5	1.0
Men	Total	6,654	100.0	39.5	\$31,533	3.3	1.4
N/A	N/A	3,427	100.0	0.0	\$11,633	2.5	1.3
N/A	Total	3,427	100.0	20.4	\$11,633	2.5	1.3
Total	00-19	1,526	9.1	0.0	\$4,043	2.6	1.6
Total	20-24	1,661	9.9	0.0	\$10,729	2.9	1.7
Total	25-34	2,329	13.8	0.0	\$23,173	3.3	1.5
Total	35-44	2,231	13.3	0.0	\$32,240	3.5	1.3
Total	45-54	2,890	17.2	0.0	\$38,799	3.6	1.3
Total	55-64	2,023	12.0	0.0	\$32,115	3.5	1.2
Total	65-Up	742	4.4	0.0	\$18,757	3.1	1.2
Total	N/A	3,430	20.4	0.0	\$11,624	2.5	1.3
Total	Total	16,832	100.0	100.0	\$22,622	3.1	1.4

Note: Persons worked at any time during the year.

County Determination: Based on county of employment in which the person made the most money in the year.

N/A: Represents persons with demographic data that is unavailable.

# Wage Records in Wyoming: Employment and Earnings by Age and Gender with Place of Work in Park County, 2000-2015

## Average Earnings by Age and Gender with Place of Work in Park County in 2008

Gender	Age Group	Number	Age Percent	Gender Percent	Average Annual Wage	Average Quarters Worked	Average Annual Employers
Women	00-19	709	10.4	0.0	\$3,743	2.7	1.6
Women	20-24	842	12.4	0.0	\$9,615	2.9	1.7
Women	25-34	1,166	17.2	0.0	\$19,789	3.3	1.5
Women	35-44	1,094	16.1	0.0	\$25,433	3.5	1.4
Women	45-54	1,527	22.5	0.0	\$30,816	3.7	1.3
Women	55-64	1,093	16.1	0.0	\$27,753	3.6	1.2
Women	65-Up	359	5.3	0.0	\$13,643	3.2	1.2
Women	N/A	1	0.0	0.0	\$2,500	2.0	1.0
Women	Total	6,791	100.0	39.9	\$21,195	3.3	1.4
Men	00-19	742	11.1	0.0	\$4,696	2.6	1.6
Men	20-24	842	12.6	0.0	\$14,073	2.9	1.6
Men	25-34	1,181	17.7	0.0	\$30,821	3.3	1.5
Men	35-44	1,096	16.5	0.0	\$42,939	3.5	1.3
Men	45-54	1,322	19.8	0.0	\$58,580	3.6	1.2
Men	55-64	1,056	15.9	0.0	\$41,428	3.5	1.2
Men	65-Up	420	6.3	0.0	\$21,553	3.1	1.1
Men	N/A	1	0.0	0.0	\$1,486	1.0	1.0
Men	Total	6,660	100.0	39.1	\$34,390	3.3	1.4
N/A	N/A	3,576	100.0	0.0	\$12,683	2.5	1.3
N/A	Total	3,576	100.0	21.0	\$12,683	2.5	1.3
Total	00-19	1,451	8.5	0.0	\$4,230	2.6	1.6
Total	20-24	1,684	9.9	0.0	\$11,844	2.9	1.6
Total	25-34	2,347	13.8	0.0	\$25,340	3.3	1.5
Total	35-44	2,190	12.9	0.0	\$34,194	3.5	1.4
Total	45-54	2,849	16.7	0.0	\$43,699	3.6	1.3
Total	55-64	2,149	12.6	0.0	\$34,473	3.5	1.2
Total	65-Up	779	4.6	0.0	\$17,908	3.1	1.1
Total	N/A	3,578	21.0	0.0	\$12,677	2.5	1.3
Total	Total	17,027	100.0	100.0	\$24,569	3.1	1.4

Note: Persons worked at any time during the year.

County Determination: Based on county of employment in which the person made the most money in the year.

N/A: Represents persons with demographic data that is unavailable.

# Wage Records in Wyoming: Employment and Earnings by Age and Gender with Place of Work in Park County, 2000-2015

## Average Earnings by Age and Gender with Place of Work in Park County in 2009

Gender	Age Group	Number	Age Percent	Gender Percent	Average Annual Wage	Average Quarters Worked	Average Annual Employers
Women	00-19	620	9.3	0.0	\$3,788	2.7	1.4
Women	20-24	752	11.3	0.0	\$10,199	2.9	1.6
Women	25-34	1,191	17.8	0.0	\$20,434	3.3	1.4
Women	35-44	1,095	16.4	0.0	\$26,268	3.5	1.3
Women	45-54	1,529	22.9	0.0	\$31,451	3.7	1.3
Women	55-64	1,130	16.9	0.0	\$28,784	3.6	1.2
Women	65-Up	366	5.5	0.0	\$14,223	3.2	1.1
Women	N/A	1	0.0	0.0	\$4,800	2.0	1.0
Women	Total	6,684	100.0	40.5	\$22,283	3.4	1.3
Men	00-19	585	9.0	0.0	\$4,268	2.6	1.4
Men	20-24	798	12.3	0.0	\$13,281	2.9	1.5
Men	25-34	1,226	18.8	0.0	\$30,476	3.3	1.4
Men	35-44	1,110	17.0	0.0	\$42,126	3.5	1.3
Men	45-54	1,268	19.5	0.0	\$55,229	3.6	1.2
Men	55-64	1,089	16.7	0.0	\$45,472	3.5	1.1
Men	65-Up	435	6.7	0.0	\$23,414	3.2	1.1
Men	N/A	2	0.0	0.0	\$1,188	1.0	1.0
Men	Total	6,513	100.0	39.5	\$34,847	3.3	1.3
N/A	N/A	3,288	100.0	0.0	\$12,349	2.5	1.2
N/A	Total	3,288	100.0	19.9	\$12,349	2.5	1.2
Total	00-19	1,205	7.3	0.0	\$4,021	2.6	1.4
Total	20-24	1,550	9.4	0.0	\$11,786	2.9	1.6
Total	25-34	2,417	14.7	0.0	\$25,528	3.3	1.4
Total	35-44	2,205	13.4	0.0	\$34,251	3.5	1.3
Total	45-54	2,797	17.0	0.0	\$42,231	3.7	1.2
Total	55-64	2,219	13.5	0.0	\$36,974	3.6	1.2
Total	65-Up	801	4.9	0.0	\$19,214	3.2	1.1
Total	N/A	3,291	20.0	0.0	\$12,340	2.5	1.2
Total	Total	16,485	100.0	100.0	\$25,266	3.2	1.3

Note: Persons worked at any time during the year.

County Determination: Based on county of employment in which the person made the most money in the year.

N/A: Represents persons with demographic data that is unavailable.

# Wage Records in Wyoming: Employment and Earnings by Age and Gender with Place of Work in Park County, 2000-2015

## Average Earnings by Age and Gender with Place of Work in Park County in 2010

Gender	Age Group	Number	Age Percent	Gender Percent	Average Annual Wage	Average Quarters Worked	Average Annual Employers
Women	00-19	632	9.3	0.0	\$3,595	2.5	1.4
Women	20-24	724	10.7	0.0	\$9,958	2.9	1.6
Women	25-34	1,200	17.7	0.0	\$21,120	3.4	1.4
Women	35-44	1,125	16.6	0.0	\$25,787	3.5	1.4
Women	45-54	1,510	22.3	0.0	\$31,660	3.7	1.3
Women	55-64	1,208	17.8	0.0	\$29,980	3.6	1.2
Women	65-Up	379	5.6	0.0	\$14,289	3.3	1.1
Women	Total	6,778	100.0	41.4	\$22,613	3.4	1.3
Men	00-19	559	8.5	0.0	\$4,390	2.5	1.3
Men	20-24	787	11.9	0.0	\$12,585	2.9	1.5
Men	25-34	1,247	18.9	0.0	\$29,954	3.3	1.3
Men	35-44	1,151	17.5	0.0	\$42,423	3.5	1.3
Men	45-54	1,273	19.3	0.0	\$53,920	3.6	1.2
Men	55-64	1,123	17.0	0.0	\$46,598	3.5	1.1
Men	65-Up	452	6.9	0.0	\$23,877	3.2	1.1
Men	N/A	1	0.0	0.0	\$4,687	1.0	1.0
Men	Total	6,593	100.0	40.3	\$34,932	3.3	1.3
N/A	N/A	2,998	100.0	0.0	\$11,996	2.5	1.2
N/A	Total	2,998	100.0	18.3	\$11,996	2.5	1.2
Total	00-19	1,191	7.3	0.0	\$3,968	2.5	1.4
Total	20-24	1,511	9.2	0.0	\$11,326	2.9	1.6
Total	25-34	2,447	14.9	0.0	\$25,622	3.3	1.4
Total	35-44	2,276	13.9	0.0	\$34,200	3.5	1.3
Total	45-54	2,783	17.0	0.0	\$41,843	3.7	1.2
Total	55-64	2,331	14.2	0.0	\$37,986	3.5	1.2
Total	65-Up	831	5.1	0.0	\$19,504	3.3	1.1
Total	N/A	2,999	18.3	0.0	\$11,994	2.5	1.2
Total	Total	16,369	100.0	100.0	\$25,631	3.2	1.3

Note: Persons worked at any time during the year.

County Determination: Based on county of employment in which the person made the most money in the year.

N/A: Represents persons with demographic data that is unavailable.

# Wage Records in Wyoming: Employment and Earnings by Age and Gender with Place of Work in Park County, 2000-2015

## Average Earnings by Age and Gender with Place of Work in Park County in 2011

Gender	Age Group	Number	Age Percent	Gender Percent	Average Annual Wage	Average Quarters Worked	Average Annual Employers
Women	00-19	587	8.7	0.0	\$3,839	2.6	1.5
Women	20-24	768	11.3	0.0	\$9,509	2.9	1.6
Women	25-34	1,238	18.3	0.0	\$20,569	3.3	1.4
Women	35-44	1,125	16.6	0.0	\$27,457	3.6	1.4
Women	45-54	1,401	20.7	0.0	\$32,132	3.7	1.2
Women	55-64	1,260	18.6	0.0	\$30,967	3.6	1.2
Women	65-Up	404	6.0	0.0	\$15,080	3.3	1.1
Women	Total	6,783	100.0	41.3	\$23,004	3.4	1.3
Men	00-19	553	8.4	0.0	\$4,554	2.4	1.3
Men	20-24	791	12.0	0.0	\$13,644	2.9	1.5
Men	25-34	1,261	19.1	0.0	\$32,968	3.4	1.4
Men	35-44	1,123	17.0	0.0	\$43,423	3.5	1.3
Men	45-54	1,262	19.1	0.0	\$55,657	3.6	1.2
Men	55-64	1,139	17.2	0.0	\$48,526	3.5	1.1
Men	65-Up	474	7.2	0.0	\$23,888	3.2	1.1
Men	N/A	1	0.0	0.0	\$16,120	2.0	1.0
Men	Total	6,604	100.0	40.2	\$36,417	3.3	1.3
N/A	N/A	3,035	100.0	0.0	\$12,758	2.5	1.2
N/A	Total	3,035	100.0	18.5	\$12,758	2.5	1.2
Total	00-19	1,140	6.9	0.0	\$4,186	2.5	1.4
Total	20-24	1,559	9.5	0.0	\$11,607	2.9	1.6
Total	25-34	2,499	15.2	0.0	\$26,825	3.4	1.4
Total	35-44	2,248	13.7	0.0	\$35,433	3.5	1.3
Total	45-54	2,663	16.2	0.0	\$43,280	3.6	1.2
Total	55-64	2,399	14.6	0.0	\$39,304	3.6	1.2
Total	65-Up	878	5.3	0.0	\$19,835	3.2	1.1
Total	N/A	3,036	18.5	0.0	\$12,759	2.5	1.2
Total	Total	16,422	100.0	100.0	\$26,504	3.2	1.3

Note: Persons worked at any time during the year.

County Determination: Based on county of employment in which the person made the most money in the year.

N/A: Represents persons with demographic data that is unavailable.

# Wage Records in Wyoming: Employment and Earnings by Age and Gender with Place of Work in Park County, 2000-2015

## Average Earnings by Age and Gender with Place of Work in Park County in 2012

Gender	Age Group	Number	Age Percent	Gender Percent	Average Annual Wage	Average Quarters Worked	Average Annual Employers
Women	00-19	613	8.9	0.0	\$4,013	2.6	1.5
Women	20-24	755	11.0	0.0	\$10,052	3.0	1.7
Women	25-34	1,262	18.3	0.0	\$21,938	3.3	1.5
Women	35-44	1,149	16.7	0.0	\$28,466	3.5	1.4
Women	45-54	1,359	19.7	0.0	\$33,283	3.7	1.3
Women	55-64	1,304	18.9	0.0	\$31,519	3.6	1.2
Women	65-Up	447	6.5	0.0	\$17,073	3.3	1.1
Women	Total	6,889	100.0	41.0	\$23,865	3.4	1.4
Men	00-19	547	8.1	0.0	\$4,442	2.5	1.4
Men	20-24	832	12.3	0.0	\$14,651	2.9	1.6
Men	25-34	1,319	19.5	0.0	\$33,112	3.3	1.4
Men	35-44	1,140	16.8	0.0	\$45,278	3.5	1.3
Men	45-54	1,249	18.4	0.0	\$54,818	3.6	1.2
Men	55-64	1,150	17.0	0.0	\$52,407	3.6	1.1
Men	65-Up	535	7.9	0.0	\$25,993	3.2	1.2
Men	Total	6,772	100.0	40.3	\$37,294	3.3	1.3
N/A	N/A	3,137	100.0	0.0	\$12,894	2.4	1.2
N/A	Total	3,137	100.0	18.7	\$12,894	2.4	1.2
Total	00-19	1,160	6.9	0.0	\$4,216	2.6	1.5
Total	20-24	1,587	9.4	0.0	\$12,463	2.9	1.6
Total	25-34	2,581	15.4	0.0	\$27,648	3.3	1.4
Total	35-44	2,289	13.6	0.0	\$36,839	3.5	1.3
Total	45-54	2,608	15.5	0.0	\$43,596	3.6	1.2
Total	55-64	2,454	14.6	0.0	\$41,308	3.6	1.2
Total	65-Up	982	5.8	0.0	\$21,933	3.3	1.1
Total	N/A	3,137	18.7	0.0	\$12,894	2.4	1.2
Total	Total	16,798	100.0	100.0	\$27,230	3.2	1.3

Note: Persons worked at any time during the year.

County Determination: Based on county of employment in which the person made the most money in the year.

N/A: Represents persons with demographic data that is unavailable.

# Wage Records in Wyoming: Employment and Earnings by Age and Gender with Place of Work in Park County, 2000-2015

## Average Earnings by Age and Gender with Place of Work in Park County in 2013

Gender	Age Group	Number	Age Percent	Gender Percent	Average Annual Wage	Average Quarters Worked	Average Annual Employers
Women	00-19	623	9.0	0.0	\$3,952	2.6	1.5
Women	20-24	758	11.0	0.0	\$10,425	3.0	1.7
Women	25-34	1,255	18.1	0.0	\$23,182	3.3	1.5
Women	35-44	1,113	16.1	0.0	\$29,344	3.5	1.4
Women	45-54	1,366	19.7	0.0	\$33,737	3.6	1.3
Women	55-64	1,316	19.0	0.0	\$33,103	3.6	1.2
Women	65-Up	491	7.1	0.0	\$17,031	3.3	1.1
Women	Total	6,922	100.0	41.6	\$24,578	3.4	1.4
Men	00-19	529	7.8	0.0	\$4,139	2.4	1.4
Men	20-24	821	12.1	0.0	\$14,819	2.9	1.6
Men	25-34	1,340	19.7	0.0	\$33,941	3.3	1.4
Men	35-44	1,165	17.2	0.0	\$47,829	3.5	1.3
Men	45-54	1,218	17.9	0.0	\$55,710	3.6	1.2
Men	55-64	1,165	17.2	0.0	\$55,154	3.5	1.1
Men	65-Up	551	8.1	0.0	\$25,335	3.3	1.1
Men	Total	6,789	100.0	40.8	\$38,537	3.3	1.3
N/A	N/A	2,932	100.0	0.0	\$12,747	2.5	1.2
N/A	Total	2,932	100.0	17.6	\$12,747	2.5	1.2
Total	00-19	1,152	6.9	0.0	\$4,038	2.5	1.5
Total	20-24	1,579	9.5	0.0	\$12,709	3.0	1.6
Total	25-34	2,595	15.6	0.0	\$28,738	3.3	1.4
Total	35-44	2,278	13.7	0.0	\$38,798	3.5	1.4
Total	45-54	2,584	15.5	0.0	\$44,094	3.6	1.3
Total	55-64	2,481	14.9	0.0	\$43,458	3.6	1.2
Total	65-Up	1,042	6.3	0.0	\$21,422	3.3	1.1
Total	N/A	2,932	17.6	0.0	\$12,747	2.5	1.2
Total	Total	16,643	100.0	100.0	\$28,188	3.2	1.3

Note: Persons worked at any time during the year.

County Determination: Based on county of employment in which the person made the most money in the year.

N/A: Represents persons with demographic data that is unavailable.

# Wage Records in Wyoming: Employment and Earnings by Age and Gender with Place of Work in Park County, 2000-2015

## Average Earnings by Age and Gender with Place of Work in Park County in 2014

Gender	Age Group	Number	Age Percent	Gender Percent	Average Annual Wage	Average Quarters Worked	Average Annual Employers
Women	00-19	624	9.0	0.0	\$4,160	2.6	1.6
Women	20-24	786	11.4	0.0	\$10,739	3.0	1.8
Women	25-34	1,263	18.3	0.0	\$24,457	3.4	1.5
Women	35-44	1,120	16.2	0.0	\$30,211	3.5	1.4
Women	45-54	1,282	18.5	0.0	\$35,101	3.6	1.3
Women	55-64	1,334	19.3	0.0	\$34,776	3.6	1.2
Women	65-Up	505	7.3	0.0	\$17,884	3.3	1.1
Women	N/A	1	0.0	0.0	\$4,216	1.0	1.0
Women	Total	6,915	100.0	40.7	\$25,479	3.4	1.4
Men	00-19	577	8.4	0.0	\$4,666	2.5	1.5
Men	20-24	804	11.7	0.0	\$16,080	3.0	1.7
Men	25-34	1,345	19.5	0.0	\$35,318	3.4	1.4
Men	35-44	1,130	16.4	0.0	\$53,091	3.5	1.3
Men	45-54	1,214	17.6	0.0	\$58,313	3.6	1.2
Men	55-64	1,208	17.5	0.0	\$58,866	3.6	1.2
Men	65-Up	617	8.9	0.0	\$24,206	3.1	1.1
Men	N/A	2	0.0	0.0	\$345	1.0	1.0
Men	Total	6,897	100.0	40.6	\$40,591	3.3	1.3
N/A	N/A	3,164	100.0	0.0	\$13,705	2.4	1.2
N/A	Total	3,164	100.0	18.6	\$13,705	2.4	1.2
Total	00-19	1,201	7.1	0.0	\$4,403	2.5	1.6
Total	20-24	1,590	9.4	0.0	\$13,439	3.0	1.7
Total	25-34	2,608	15.4	0.0	\$30,058	3.4	1.5
Total	35-44	2,250	13.3	0.0	\$41,702	3.5	1.4
Total	45-54	2,496	14.7	0.0	\$46,391	3.6	1.3
Total	55-64	2,542	15.0	0.0	\$46,224	3.6	1.2
Total	65-Up	1,122	6.6	0.0	\$21,360	3.1	1.1
Total	N/A	3,167	18.7	0.0	\$13,694	2.4	1.2
Total	Total	16,976	100.0	100.0	\$29,424	3.2	1.3

Note: Persons worked at any time during the year.

County Determination: Based on county of employment in which the person made the most money in the year.

N/A: Represents persons with demographic data that is unavailable.



# Wage Records in Wyoming: Employment and Earnings by Age and Gender with Place of Work in Park County, 2000-2015

## Average Earnings by Age and Gender with Place of Work in Park County in 2015

Gender	Age Group	Number	Age Percent	Gender Percent	Average Annual Wage	Average Quarters Worked	Average Annual Employers
Women	00-19	556	8.1	0.0	\$4,911	2.8	1.7
Women	20-24	795	11.6	0.0	\$11,807	3.0	1.8
Women	25-34	1,257	18.4	0.0	\$25,143	3.4	1.5
Women	35-44	1,112	16.3	0.0	\$31,546	3.5	1.4
Women	45-54	1,240	18.1	0.0	\$35,492	3.6	1.3
Women	55-64	1,354	19.8	0.0	\$35,151	3.6	1.2
Women	65-Up	519	7.6	0.0	\$17,257	3.3	1.1
Women	N/A	1	0.0	0.0	\$4,541	1.0	1.0
Women	Total	6,834	100.0	40.2	\$26,246	3.4	1.4
Men	00-19	533	7.8	0.0	\$4,693	2.5	1.5
Men	20-24	789	11.5	0.0	\$15,864	3.0	1.7
Men	25-34	1,368	20.0	0.0	\$35,404	3.4	1.5
Men	35-44	1,142	16.7	0.0	\$52,095	3.5	1.3
Men	45-54	1,175	17.2	0.0	\$58,962	3.6	1.2
Men	55-64	1,242	18.1	0.0	\$60,922	3.5	1.2
Men	65-Up	598	8.7	0.0	\$24,990	3.1	1.2
Men	Total	6,847	100.0	40.2	\$41,308	3.3	1.3
N/A	N/A	3,338	100.0	0.0	\$13,424	2.5	1.2
N/A	Total	3,338	100.0	19.6	\$13,424	2.5	1.2
Total	00-19	1,089	6.4	0.0	\$4,804	2.6	1.6
Total	20-24	1,584	9.3	0.0	\$13,828	3.0	1.7
Total	25-34	2,625	15.4	0.0	\$30,491	3.4	1.5
Total	35-44	2,254	13.2	0.0	\$41,957	3.5	1.4
Total	45-54	2,415	14.2	0.0	\$46,911	3.6	1.3
Total	55-64	2,596	15.3	0.0	\$47,480	3.5	1.2
Total	65-Up	1,117	6.6	0.0	\$21,397	3.2	1.1
Total	N/A	3,339	19.6	0.0	\$13,422	2.5	1.2
Total	Total	17,019	100.0	100.0	\$29,791	3.2	1.3

Note: Persons worked at any time during the year.

County Determination: Based on county of employment in which the person made the most money in the year.

N/A: Represents persons with demographic data that is unavailable.