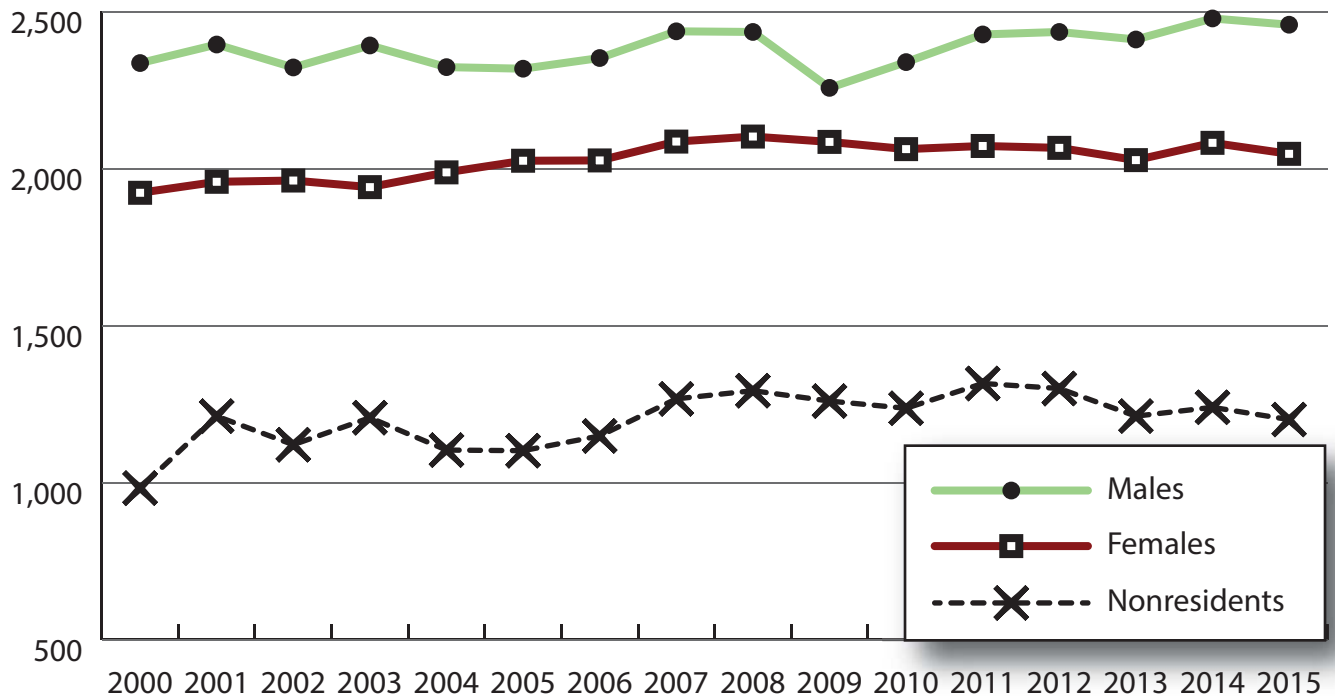
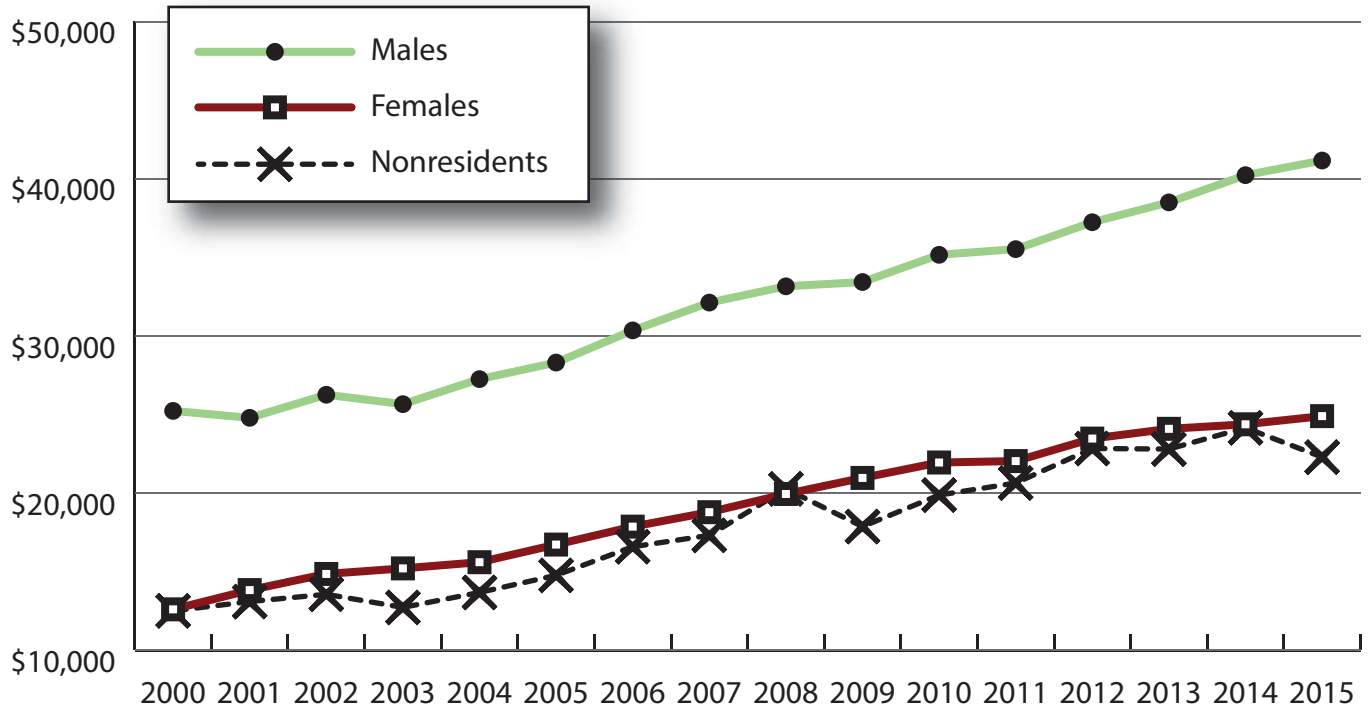


Wage Records in Wyoming: Employment and Earnings by Age and Gender with Place of Work in Big Horn County, 2000-2015

Total Number of Persons Working in Big Horn County at Any Time by Gender, 2000-2015



Average Annual Earnings for Persons Working in Big Horn County at Any Time by Gender, 2000-2015



Wage Records in Wyoming: Employment and Earnings by Age and Gender with Place of Work in Big Horn County, 2000-2015

Average Earnings by Age and Gender with Place of Work in Big Horn County in 2000

| Gender | Age Group | Number | Age Percent | Gender Percent | Average Annual Wage | Average Quarters Worked | Average Annual Employers |
|--------|-----------|--------|-------------|----------------|---------------------|-------------------------|--------------------------|
| Women | 00-19 | 223 | 11.6 | 0.0 | \$2,637 | 2.6 | 1.4 |
| Women | 20-24 | 154 | 8.0 | 0.0 | \$6,965 | 3.0 | 1.7 |
| Women | 25-34 | 326 | 17.0 | 0.0 | \$11,678 | 3.2 | 1.5 |
| Women | 35-44 | 450 | 23.4 | 0.0 | \$15,228 | 3.3 | 1.4 |
| Women | 45-54 | 449 | 23.3 | 0.0 | \$17,458 | 3.4 | 1.2 |
| Women | 55-64 | 241 | 12.5 | 0.0 | \$14,396 | 3.3 | 1.2 |
| Women | 65-Up | 80 | 4.2 | 0.0 | \$7,367 | 2.9 | 1.1 |
| Women | Total | 1,923 | 100.0 | 36.7 | \$12,594 | 3.2 | 1.4 |
| Men | 00-19 | 204 | 8.7 | 0.0 | \$3,727 | 2.4 | 1.3 |
| Men | 20-24 | 252 | 10.8 | 0.0 | \$14,678 | 3.1 | 1.6 |
| Men | 25-34 | 469 | 20.1 | 0.0 | \$23,468 | 3.3 | 1.4 |
| Men | 35-44 | 507 | 21.7 | 0.0 | \$32,339 | 3.4 | 1.3 |
| Men | 45-54 | 501 | 21.4 | 0.0 | \$33,600 | 3.6 | 1.2 |
| Men | 55-64 | 283 | 12.1 | 0.0 | \$28,182 | 3.3 | 1.2 |
| Men | 65-Up | 117 | 5.0 | 0.0 | \$18,861 | 3.1 | 1.2 |
| Men | N/A | 3 | 0.1 | 0.0 | \$19,490 | 2.0 | 1.0 |
| Men | Total | 2,336 | 100.0 | 44.6 | \$25,229 | 3.3 | 1.3 |
| N/A | N/A | 983 | 100.0 | 0.0 | \$12,497 | 2.4 | 1.3 |
| N/A | Total | 983 | 100.0 | 18.8 | \$12,497 | 2.4 | 1.3 |
| Total | 00-19 | 427 | 8.1 | 0.0 | \$3,157 | 2.5 | 1.4 |
| Total | 20-24 | 406 | 7.7 | 0.0 | \$11,752 | 3.0 | 1.6 |
| Total | 25-34 | 795 | 15.2 | 0.0 | \$18,633 | 3.2 | 1.4 |
| Total | 35-44 | 957 | 18.3 | 0.0 | \$24,293 | 3.4 | 1.3 |
| Total | 45-54 | 950 | 18.1 | 0.0 | \$25,971 | 3.5 | 1.2 |
| Total | 55-64 | 524 | 10.0 | 0.0 | \$21,842 | 3.3 | 1.2 |
| Total | 65-Up | 197 | 3.8 | 0.0 | \$14,193 | 3.0 | 1.2 |
| Total | N/A | 986 | 18.8 | 0.0 | \$12,518 | 2.4 | 1.3 |
| Total | Total | 5,242 | 100.0 | 100.0 | \$18,206 | 3.1 | 1.3 |

Note: Persons worked at any time during the year.

County Determination: Based on county of employment in which the person made the most money in the year.

N/A: Represents persons with demographic data that is unavailable.

Wage Records in Wyoming: Employment and Earnings by Age and Gender with Place of Work in Big Horn County, 2000-2015

Average Earnings by Age and Gender with Place of Work in Big Horn County in 2001

| Gender | Age Group | Number | Age Percent | Gender Percent | Average Annual Wage | Average Quarters Worked | Average Annual Employers |
|--------|-----------|--------|-------------|----------------|---------------------|-------------------------|--------------------------|
| Women | 00-19 | 231 | 11.8 | 0.0 | \$2,804 | 2.7 | 1.5 |
| Women | 20-24 | 159 | 8.1 | 0.0 | \$6,741 | 2.8 | 1.7 |
| Women | 25-34 | 323 | 16.5 | 0.0 | \$12,350 | 3.2 | 1.5 |
| Women | 35-44 | 449 | 22.9 | 0.0 | \$16,849 | 3.5 | 1.3 |
| Women | 45-54 | 455 | 23.2 | 0.0 | \$19,690 | 3.6 | 1.2 |
| Women | 55-64 | 252 | 12.9 | 0.0 | \$15,979 | 3.4 | 1.2 |
| Women | 65-Up | 88 | 4.5 | 0.0 | \$9,091 | 2.9 | 1.2 |
| Women | N/A | 1 | 0.1 | 0.0 | \$454 | 1.0 | 1.0 |
| Women | Total | 1,958 | 100.0 | 35.2 | \$13,820 | 3.3 | 1.4 |
| Men | 00-19 | 244 | 10.2 | 0.0 | \$3,891 | 2.4 | 1.5 |
| Men | 20-24 | 258 | 10.8 | 0.0 | \$15,464 | 3.0 | 1.6 |
| Men | 25-34 | 466 | 19.5 | 0.0 | \$23,726 | 3.3 | 1.4 |
| Men | 35-44 | 512 | 21.4 | 0.0 | \$31,601 | 3.5 | 1.3 |
| Men | 45-54 | 497 | 20.8 | 0.0 | \$33,357 | 3.5 | 1.2 |
| Men | 55-64 | 284 | 11.9 | 0.0 | \$29,322 | 3.5 | 1.2 |
| Men | 65-Up | 132 | 5.5 | 0.0 | \$16,930 | 3.0 | 1.2 |
| Men | N/A | 2 | 0.1 | 0.0 | \$26,020 | 2.5 | 1.0 |
| Men | Total | 2,395 | 100.0 | 43.0 | \$24,788 | 3.3 | 1.3 |
| N/A | N/A | 1,212 | 100.0 | 0.0 | \$13,088 | 2.3 | 1.3 |
| N/A | Total | 1,212 | 100.0 | 21.8 | \$13,088 | 2.3 | 1.3 |
| Total | 00-19 | 475 | 8.5 | 0.0 | \$3,362 | 2.5 | 1.5 |
| Total | 20-24 | 417 | 7.5 | 0.0 | \$12,138 | 2.9 | 1.7 |
| Total | 25-34 | 789 | 14.2 | 0.0 | \$19,069 | 3.3 | 1.4 |
| Total | 35-44 | 961 | 17.3 | 0.0 | \$24,708 | 3.5 | 1.3 |
| Total | 45-54 | 952 | 17.1 | 0.0 | \$26,825 | 3.5 | 1.2 |
| Total | 55-64 | 536 | 9.6 | 0.0 | \$23,049 | 3.4 | 1.2 |
| Total | 65-Up | 220 | 4.0 | 0.0 | \$13,794 | 3.0 | 1.2 |
| Total | N/A | 1,215 | 21.8 | 0.0 | \$13,099 | 2.3 | 1.3 |
| Total | Total | 5,565 | 100.0 | 100.0 | \$18,381 | 3.1 | 1.3 |

Note: Persons worked at any time during the year.

County Determination: Based on county of employment in which the person made the most money in the year.

N/A: Represents persons with demographic data that is unavailable.

Wage Records in Wyoming: Employment and Earnings by Age and Gender with Place of Work in Big Horn County, 2000-2015

Average Earnings by Age and Gender with Place of Work in Big Horn County in 2002

| Gender | Age Group | Number | Age Percent | Gender Percent | Average Annual Wage | Average Quarters Worked | Average Annual Employers |
|--------|-----------|--------|-------------|----------------|---------------------|-------------------------|--------------------------|
| Women | 00-19 | 233 | 11.9 | 0.0 | \$2,977 | 2.6 | 1.5 |
| Women | 20-24 | 182 | 9.3 | 0.0 | \$7,094 | 2.8 | 1.6 |
| Women | 25-34 | 321 | 16.4 | 0.0 | \$13,712 | 3.3 | 1.4 |
| Women | 35-44 | 438 | 22.3 | 0.0 | \$18,414 | 3.6 | 1.4 |
| Women | 45-54 | 464 | 23.6 | 0.0 | \$20,555 | 3.6 | 1.3 |
| Women | 55-64 | 241 | 12.3 | 0.0 | \$18,216 | 3.4 | 1.3 |
| Women | 65-Up | 82 | 4.2 | 0.0 | \$9,144 | 3.0 | 1.2 |
| Women | N/A | 1 | 0.1 | 0.0 | \$3,600 | 1.0 | 1.0 |
| Women | Total | 1,962 | 100.0 | 36.3 | \$14,848 | 3.3 | 1.4 |
| Men | 00-19 | 217 | 9.3 | 0.0 | \$3,762 | 2.4 | 1.4 |
| Men | 20-24 | 263 | 11.3 | 0.0 | \$15,541 | 2.9 | 1.5 |
| Men | 25-34 | 430 | 18.5 | 0.0 | \$26,657 | 3.4 | 1.4 |
| Men | 35-44 | 492 | 21.2 | 0.0 | \$32,796 | 3.5 | 1.3 |
| Men | 45-54 | 480 | 20.7 | 0.0 | \$34,885 | 3.5 | 1.2 |
| Men | 55-64 | 314 | 13.5 | 0.0 | \$31,026 | 3.5 | 1.3 |
| Men | 65-Up | 124 | 5.3 | 0.0 | \$15,418 | 3.0 | 1.2 |
| Men | N/A | 2 | 0.1 | 0.0 | \$33,373 | 2.5 | 1.0 |
| Men | Total | 2,322 | 100.0 | 43.0 | \$26,257 | 3.3 | 1.3 |
| N/A | N/A | 1,121 | 100.0 | 0.0 | \$13,553 | 2.4 | 1.3 |
| N/A | Total | 1,121 | 100.0 | 20.7 | \$13,553 | 2.4 | 1.3 |
| Total | 00-19 | 450 | 8.3 | 0.0 | \$3,355 | 2.5 | 1.5 |
| Total | 20-24 | 445 | 8.2 | 0.0 | \$12,087 | 2.9 | 1.6 |
| Total | 25-34 | 751 | 13.9 | 0.0 | \$21,124 | 3.4 | 1.4 |
| Total | 35-44 | 930 | 17.2 | 0.0 | \$26,023 | 3.5 | 1.3 |
| Total | 45-54 | 944 | 17.5 | 0.0 | \$27,842 | 3.6 | 1.2 |
| Total | 55-64 | 555 | 10.3 | 0.0 | \$25,463 | 3.5 | 1.3 |
| Total | 65-Up | 206 | 3.8 | 0.0 | \$12,921 | 3.0 | 1.2 |
| Total | N/A | 1,124 | 20.8 | 0.0 | \$13,580 | 2.4 | 1.3 |
| Total | Total | 5,405 | 100.0 | 100.0 | \$19,481 | 3.1 | 1.3 |

Note: Persons worked at any time during the year.

County Determination: Based on county of employment in which the person made the most money in the year.

N/A: Represents persons with demographic data that is unavailable.

Wage Records in Wyoming: Employment and Earnings by Age and Gender with Place of Work in Big Horn County, 2000-2015

Average Earnings by Age and Gender with Place of Work in Big Horn County in 2003

| Gender | Age Group | Number | Age Percent | Gender Percent | Average Annual Wage | Average Quarters Worked | Average Annual Employers |
|--------|-----------|--------|-------------|----------------|---------------------|-------------------------|--------------------------|
| Women | 00-19 | 207 | 10.7 | 0.0 | \$2,523 | 2.4 | 1.4 |
| Women | 20-24 | 189 | 9.7 | 0.0 | \$7,264 | 2.9 | 1.5 |
| Women | 25-34 | 299 | 15.4 | 0.0 | \$14,413 | 3.3 | 1.4 |
| Women | 35-44 | 440 | 22.7 | 0.0 | \$18,955 | 3.5 | 1.3 |
| Women | 45-54 | 467 | 24.1 | 0.0 | \$20,456 | 3.5 | 1.2 |
| Women | 55-64 | 265 | 13.7 | 0.0 | \$18,041 | 3.4 | 1.2 |
| Women | 65-Up | 72 | 3.7 | 0.0 | \$8,660 | 3.1 | 1.1 |
| Women | N/A | 2 | 0.1 | 0.0 | \$1,626 | 1.0 | 1.0 |
| Women | Total | 1,941 | 100.0 | 35.0 | \$15,201 | 3.3 | 1.3 |
| Men | 00-19 | 237 | 9.9 | 0.0 | \$3,685 | 2.4 | 1.4 |
| Men | 20-24 | 274 | 11.5 | 0.0 | \$13,845 | 2.8 | 1.5 |
| Men | 25-34 | 451 | 18.9 | 0.0 | \$27,270 | 3.4 | 1.3 |
| Men | 35-44 | 482 | 20.2 | 0.0 | \$32,647 | 3.5 | 1.3 |
| Men | 45-54 | 489 | 20.4 | 0.0 | \$34,364 | 3.5 | 1.2 |
| Men | 55-64 | 321 | 13.4 | 0.0 | \$30,771 | 3.4 | 1.2 |
| Men | 65-Up | 136 | 5.7 | 0.0 | \$14,330 | 3.0 | 1.2 |
| Men | N/A | 2 | 0.1 | 0.0 | \$20,901 | 2.5 | 1.0 |
| Men | Total | 2,392 | 100.0 | 43.2 | \$25,658 | 3.2 | 1.3 |
| N/A | N/A | 1,207 | 100.0 | 0.0 | \$12,717 | 2.4 | 1.3 |
| N/A | Total | 1,207 | 100.0 | 21.8 | \$12,717 | 2.4 | 1.3 |
| Total | 00-19 | 444 | 8.0 | 0.0 | \$3,143 | 2.4 | 1.4 |
| Total | 20-24 | 463 | 8.4 | 0.0 | \$11,159 | 2.8 | 1.5 |
| Total | 25-34 | 750 | 13.5 | 0.0 | \$22,144 | 3.4 | 1.3 |
| Total | 35-44 | 922 | 16.6 | 0.0 | \$26,113 | 3.5 | 1.3 |
| Total | 45-54 | 956 | 17.3 | 0.0 | \$27,570 | 3.5 | 1.2 |
| Total | 55-64 | 586 | 10.6 | 0.0 | \$25,014 | 3.4 | 1.2 |
| Total | 65-Up | 208 | 3.8 | 0.0 | \$12,367 | 3.0 | 1.2 |
| Total | N/A | 1,211 | 21.9 | 0.0 | \$12,712 | 2.4 | 1.3 |
| Total | Total | 5,540 | 100.0 | 100.0 | \$19,175 | 3.1 | 1.3 |

Note: Persons worked at any time during the year.

County Determination: Based on county of employment in which the person made the most money in the year.

N/A: Represents persons with demographic data that is unavailable.

Wage Records in Wyoming: Employment and Earnings by Age and Gender with Place of Work in Big Horn County, 2000-2015

Average Earnings by Age and Gender with Place of Work in Big Horn County in 2004

| Gender | Age Group | Number | Age Percent | Gender Percent | Average Annual Wage | Average Quarters Worked | Average Annual Employers |
|--------|-----------|--------|-------------|----------------|---------------------|-------------------------|--------------------------|
| Women | 00-19 | 207 | 10.4 | 0.0 | \$2,746 | 2.5 | 1.6 |
| Women | 20-24 | 206 | 10.4 | 0.0 | \$7,877 | 3.1 | 1.8 |
| Women | 25-34 | 311 | 15.6 | 0.0 | \$14,534 | 3.2 | 1.4 |
| Women | 35-44 | 419 | 21.1 | 0.0 | \$18,903 | 3.5 | 1.4 |
| Women | 45-54 | 480 | 24.1 | 0.0 | \$20,876 | 3.6 | 1.3 |
| Women | 55-64 | 289 | 14.5 | 0.0 | \$19,523 | 3.5 | 1.2 |
| Women | 65-Up | 74 | 3.7 | 0.0 | \$9,456 | 3.0 | 1.2 |
| Women | N/A | 2 | 0.1 | 0.0 | \$4,119 | 1.5 | 1.0 |
| Women | Total | 1,988 | 100.0 | 36.7 | \$15,595 | 3.3 | 1.4 |
| Men | 00-19 | 217 | 9.3 | 0.0 | \$3,540 | 2.4 | 1.3 |
| Men | 20-24 | 254 | 10.9 | 0.0 | \$14,649 | 2.9 | 1.6 |
| Men | 25-34 | 459 | 19.8 | 0.0 | \$27,797 | 3.4 | 1.3 |
| Men | 35-44 | 447 | 19.2 | 0.0 | \$34,233 | 3.6 | 1.3 |
| Men | 45-54 | 490 | 21.1 | 0.0 | \$36,859 | 3.5 | 1.2 |
| Men | 55-64 | 323 | 13.9 | 0.0 | \$32,155 | 3.5 | 1.2 |
| Men | 65-Up | 131 | 5.6 | 0.0 | \$17,256 | 3.2 | 1.2 |
| Men | N/A | 2 | 0.1 | 0.0 | \$25,844 | 2.0 | 1.0 |
| Men | Total | 2,323 | 100.0 | 42.9 | \$27,253 | 3.3 | 1.3 |
| N/A | N/A | 1,104 | 100.0 | 0.0 | \$13,670 | 2.6 | 1.4 |
| N/A | Total | 1,104 | 100.0 | 20.4 | \$13,670 | 2.6 | 1.4 |
| Total | 00-19 | 424 | 7.8 | 0.0 | \$3,152 | 2.4 | 1.4 |
| Total | 20-24 | 460 | 8.5 | 0.0 | \$11,617 | 3.0 | 1.7 |
| Total | 25-34 | 770 | 14.2 | 0.0 | \$22,440 | 3.3 | 1.4 |
| Total | 35-44 | 866 | 16.0 | 0.0 | \$26,816 | 3.5 | 1.3 |
| Total | 45-54 | 970 | 17.9 | 0.0 | \$28,950 | 3.6 | 1.2 |
| Total | 55-64 | 612 | 11.3 | 0.0 | \$26,190 | 3.5 | 1.2 |
| Total | 65-Up | 205 | 3.8 | 0.0 | \$14,440 | 3.1 | 1.2 |
| Total | N/A | 1,108 | 20.5 | 0.0 | \$13,675 | 2.6 | 1.4 |
| Total | Total | 5,415 | 100.0 | 100.0 | \$20,204 | 3.2 | 1.3 |

Note: Persons worked at any time during the year.

County Determination: Based on county of employment in which the person made the most money in the year.

N/A: Represents persons with demographic data that is unavailable.

Wage Records in Wyoming: Employment and Earnings by Age and Gender with Place of Work in Big Horn County, 2000-2015

Average Earnings by Age and Gender with Place of Work in Big Horn County in 2005

| Gender | Age Group | Number | Age Percent | Gender Percent | Average Annual Wage | Average Quarters Worked | Average Annual Employers |
|--------|-----------|--------|-------------|----------------|---------------------|-------------------------|--------------------------|
| Women | 00-19 | 214 | 10.6 | 0.0 | \$2,524 | 2.4 | 1.5 |
| Women | 20-24 | 191 | 9.4 | 0.0 | \$8,096 | 3.0 | 1.8 |
| Women | 25-34 | 331 | 16.3 | 0.0 | \$15,148 | 3.2 | 1.5 |
| Women | 35-44 | 419 | 20.7 | 0.0 | \$19,993 | 3.6 | 1.4 |
| Women | 45-54 | 484 | 23.9 | 0.0 | \$22,279 | 3.6 | 1.3 |
| Women | 55-64 | 307 | 15.2 | 0.0 | \$21,811 | 3.5 | 1.2 |
| Women | 65-Up | 79 | 3.9 | 0.0 | \$11,359 | 3.2 | 1.2 |
| Women | Total | 2,025 | 100.0 | 37.2 | \$16,718 | 3.3 | 1.4 |
| Men | 00-19 | 226 | 9.7 | 0.0 | \$4,601 | 2.4 | 1.4 |
| Men | 20-24 | 267 | 11.5 | 0.0 | \$14,819 | 2.9 | 1.6 |
| Men | 25-34 | 424 | 18.3 | 0.0 | \$29,872 | 3.5 | 1.5 |
| Men | 35-44 | 434 | 18.7 | 0.0 | \$36,375 | 3.6 | 1.4 |
| Men | 45-54 | 486 | 21.0 | 0.0 | \$38,633 | 3.6 | 1.3 |
| Men | 55-64 | 331 | 14.3 | 0.0 | \$33,428 | 3.5 | 1.2 |
| Men | 65-Up | 149 | 6.4 | 0.0 | \$15,172 | 3.0 | 1.2 |
| Men | N/A | 1 | 0.0 | 0.0 | \$62,081 | 4.0 | 1.0 |
| Men | Total | 2,318 | 100.0 | 42.6 | \$28,305 | 3.3 | 1.4 |
| N/A | N/A | 1,102 | 100.0 | 0.0 | \$14,759 | 2.7 | 1.4 |
| N/A | Total | 1,102 | 100.0 | 20.2 | \$14,759 | 2.7 | 1.4 |
| Total | 00-19 | 440 | 8.1 | 0.0 | \$3,591 | 2.4 | 1.5 |
| Total | 20-24 | 458 | 8.4 | 0.0 | \$12,015 | 2.9 | 1.7 |
| Total | 25-34 | 755 | 13.9 | 0.0 | \$23,417 | 3.4 | 1.5 |
| Total | 35-44 | 853 | 15.7 | 0.0 | \$28,328 | 3.6 | 1.4 |
| Total | 45-54 | 970 | 17.8 | 0.0 | \$30,473 | 3.6 | 1.3 |
| Total | 55-64 | 638 | 11.7 | 0.0 | \$27,838 | 3.5 | 1.2 |
| Total | 65-Up | 228 | 4.2 | 0.0 | \$13,851 | 3.1 | 1.2 |
| Total | N/A | 1,103 | 20.3 | 0.0 | \$14,802 | 2.7 | 1.4 |
| Total | Total | 5,445 | 100.0 | 100.0 | \$21,254 | 3.2 | 1.4 |

Note: Persons worked at any time during the year.

County Determination: Based on county of employment in which the person made the most money in the year.

N/A: Represents persons with demographic data that is unavailable.

Wage Records in Wyoming: Employment and Earnings by Age and Gender with Place of Work in Big Horn County, 2000-2015

Average Earnings by Age and Gender with Place of Work in Big Horn County in 2006

| Gender | Age Group | Number | Age Percent | Gender Percent | Average Annual Wage | Average Quarters Worked | Average Annual Employers |
|--------|-----------|--------|-------------|----------------|---------------------|-------------------------|--------------------------|
| Women | 00-19 | 236 | 11.6 | 0.0 | \$2,820 | 2.4 | 1.5 |
| Women | 20-24 | 198 | 9.8 | 0.0 | \$9,680 | 3.0 | 1.7 |
| Women | 25-34 | 289 | 14.3 | 0.0 | \$17,010 | 3.3 | 1.5 |
| Women | 35-44 | 393 | 19.4 | 0.0 | \$21,691 | 3.5 | 1.4 |
| Women | 45-54 | 490 | 24.2 | 0.0 | \$24,172 | 3.7 | 1.3 |
| Women | 55-64 | 323 | 15.9 | 0.0 | \$22,922 | 3.6 | 1.3 |
| Women | 65-Up | 96 | 4.7 | 0.0 | \$9,501 | 3.3 | 1.1 |
| Women | N/A | 1 | 0.0 | 0.0 | \$1,880 | 2.0 | 2.0 |
| Women | Total | 2,026 | 100.0 | 36.7 | \$17,860 | 3.4 | 1.4 |
| Men | 00-19 | 241 | 10.2 | 0.0 | \$4,509 | 2.4 | 1.4 |
| Men | 20-24 | 254 | 10.8 | 0.0 | \$17,569 | 3.0 | 1.7 |
| Men | 25-34 | 424 | 18.0 | 0.0 | \$31,622 | 3.4 | 1.3 |
| Men | 35-44 | 454 | 19.3 | 0.0 | \$37,599 | 3.5 | 1.3 |
| Men | 45-54 | 476 | 20.2 | 0.0 | \$41,764 | 3.6 | 1.3 |
| Men | 55-64 | 364 | 15.5 | 0.0 | \$35,425 | 3.5 | 1.2 |
| Men | 65-Up | 136 | 5.8 | 0.0 | \$18,521 | 3.2 | 1.2 |
| Men | N/A | 3 | 0.1 | 0.0 | \$24,056 | 2.7 | 2.3 |
| Men | Total | 2,352 | 100.0 | 42.6 | \$30,354 | 3.3 | 1.3 |
| N/A | N/A | 1,149 | 100.0 | 0.0 | \$16,581 | 2.7 | 1.4 |
| N/A | Total | 1,149 | 100.0 | 20.8 | \$16,581 | 2.7 | 1.4 |
| Total | 00-19 | 477 | 8.6 | 0.0 | \$3,674 | 2.4 | 1.5 |
| Total | 20-24 | 452 | 8.2 | 0.0 | \$14,113 | 3.0 | 1.7 |
| Total | 25-34 | 713 | 12.9 | 0.0 | \$25,699 | 3.4 | 1.4 |
| Total | 35-44 | 847 | 15.3 | 0.0 | \$30,218 | 3.5 | 1.4 |
| Total | 45-54 | 966 | 17.5 | 0.0 | \$32,841 | 3.7 | 1.3 |
| Total | 55-64 | 687 | 12.4 | 0.0 | \$29,546 | 3.6 | 1.2 |
| Total | 65-Up | 232 | 4.2 | 0.0 | \$14,788 | 3.2 | 1.2 |
| Total | N/A | 1,153 | 20.9 | 0.0 | \$16,588 | 2.7 | 1.4 |
| Total | Total | 5,527 | 100.0 | 100.0 | \$22,911 | 3.2 | 1.4 |

Note: Persons worked at any time during the year.

County Determination: Based on county of employment in which the person made the most money in the year.

N/A: Represents persons with demographic data that is unavailable.

Wage Records in Wyoming: Employment and Earnings by Age and Gender with Place of Work in Big Horn County, 2000-2015

Average Earnings by Age and Gender with Place of Work in Big Horn County in 2007

| Gender | Age Group | Number | Age Percent | Gender Percent | Average Annual Wage | Average Quarters Worked | Average Annual Employers |
|--------|-----------|--------|-------------|----------------|---------------------|-------------------------|--------------------------|
| Women | 00-19 | 235 | 11.3 | 0.0 | \$2,890 | 2.5 | 1.5 |
| Women | 20-24 | 205 | 9.8 | 0.0 | \$8,332 | 2.9 | 1.7 |
| Women | 25-34 | 316 | 15.1 | 0.0 | \$16,521 | 3.2 | 1.5 |
| Women | 35-44 | 402 | 19.3 | 0.0 | \$23,423 | 3.5 | 1.4 |
| Women | 45-54 | 488 | 23.4 | 0.0 | \$25,135 | 3.6 | 1.3 |
| Women | 55-64 | 336 | 16.1 | 0.0 | \$25,428 | 3.6 | 1.2 |
| Women | 65-Up | 104 | 5.0 | 0.0 | \$12,903 | 3.2 | 1.2 |
| Women | Total | 2,086 | 100.0 | 36.0 | \$18,780 | 3.3 | 1.4 |
| Men | 00-19 | 253 | 10.4 | 0.0 | \$4,984 | 2.5 | 1.5 |
| Men | 20-24 | 265 | 10.9 | 0.0 | \$18,771 | 3.0 | 1.5 |
| Men | 25-34 | 452 | 18.5 | 0.0 | \$32,463 | 3.3 | 1.3 |
| Men | 35-44 | 463 | 19.0 | 0.0 | \$40,942 | 3.6 | 1.3 |
| Men | 45-54 | 486 | 19.9 | 0.0 | \$43,574 | 3.6 | 1.2 |
| Men | 55-64 | 365 | 15.0 | 0.0 | \$39,329 | 3.6 | 1.2 |
| Men | 65-Up | 151 | 6.2 | 0.0 | \$18,621 | 3.1 | 1.2 |
| Men | N/A | 2 | 0.1 | 0.0 | \$40,055 | 2.5 | 1.0 |
| Men | Total | 2,437 | 100.0 | 42.1 | \$32,125 | 3.3 | 1.3 |
| N/A | N/A | 1,267 | 100.0 | 0.0 | \$17,304 | 2.7 | 1.4 |
| N/A | Total | 1,267 | 100.0 | 21.9 | \$17,304 | 2.7 | 1.4 |
| Total | 00-19 | 488 | 8.4 | 0.0 | \$3,976 | 2.5 | 1.5 |
| Total | 20-24 | 470 | 8.1 | 0.0 | \$14,218 | 3.0 | 1.6 |
| Total | 25-34 | 768 | 13.3 | 0.0 | \$25,904 | 3.3 | 1.4 |
| Total | 35-44 | 865 | 14.9 | 0.0 | \$32,800 | 3.5 | 1.3 |
| Total | 45-54 | 974 | 16.8 | 0.0 | \$34,335 | 3.6 | 1.2 |
| Total | 55-64 | 701 | 12.1 | 0.0 | \$32,666 | 3.6 | 1.2 |
| Total | 65-Up | 255 | 4.4 | 0.0 | \$16,289 | 3.1 | 1.2 |
| Total | N/A | 1,269 | 21.9 | 0.0 | \$17,340 | 2.7 | 1.4 |
| Total | Total | 5,790 | 100.0 | 100.0 | \$24,074 | 3.2 | 1.3 |

Note: Persons worked at any time during the year.

County Determination: Based on county of employment in which the person made the most money in the year.

N/A: Represents persons with demographic data that is unavailable.

Wage Records in Wyoming: Employment and Earnings by Age and Gender with Place of Work in Big Horn County, 2000-2015

Average Earnings by Age and Gender with Place of Work in Big Horn County in 2008

| Gender | Age Group | Number | Age Percent | Gender Percent | Average Annual Wage | Average Quarters Worked | Average Annual Employers |
|--------|-----------|--------|-------------|----------------|---------------------|-------------------------|--------------------------|
| Women | 00-19 | 224 | 10.7 | 0.0 | \$3,090 | 2.6 | 1.5 |
| Women | 20-24 | 195 | 9.3 | 0.0 | \$9,300 | 2.9 | 1.7 |
| Women | 25-34 | 323 | 15.4 | 0.0 | \$17,788 | 3.3 | 1.4 |
| Women | 35-44 | 366 | 17.4 | 0.0 | \$24,425 | 3.6 | 1.3 |
| Women | 45-54 | 504 | 24.0 | 0.0 | \$27,081 | 3.6 | 1.2 |
| Women | 55-64 | 374 | 17.8 | 0.0 | \$25,976 | 3.6 | 1.2 |
| Women | 65-Up | 116 | 5.5 | 0.0 | \$11,710 | 3.2 | 1.2 |
| Women | Total | 2,102 | 100.0 | 36.1 | \$19,940 | 3.4 | 1.3 |
| Men | 00-19 | 241 | 9.9 | 0.0 | \$4,592 | 2.4 | 1.4 |
| Men | 20-24 | 260 | 10.7 | 0.0 | \$19,355 | 3.0 | 1.5 |
| Men | 25-34 | 443 | 18.2 | 0.0 | \$33,611 | 3.3 | 1.3 |
| Men | 35-44 | 456 | 18.7 | 0.0 | \$42,599 | 3.5 | 1.3 |
| Men | 45-54 | 490 | 20.1 | 0.0 | \$44,388 | 3.6 | 1.2 |
| Men | 55-64 | 366 | 15.0 | 0.0 | \$42,002 | 3.6 | 1.2 |
| Men | 65-Up | 178 | 7.3 | 0.0 | \$17,482 | 3.0 | 1.2 |
| Men | N/A | 1 | 0.0 | 0.0 | \$55,686 | 3.0 | 1.0 |
| Men | Total | 2,435 | 100.0 | 41.8 | \$33,160 | 3.3 | 1.3 |
| N/A | N/A | 1,293 | 100.0 | 0.0 | \$20,264 | 2.8 | 1.3 |
| N/A | Total | 1,293 | 100.0 | 22.2 | \$20,264 | 2.8 | 1.3 |
| Total | 00-19 | 465 | 8.0 | 0.0 | \$3,869 | 2.5 | 1.4 |
| Total | 20-24 | 455 | 7.8 | 0.0 | \$15,045 | 3.0 | 1.6 |
| Total | 25-34 | 766 | 13.1 | 0.0 | \$26,939 | 3.3 | 1.4 |
| Total | 35-44 | 822 | 14.1 | 0.0 | \$34,507 | 3.6 | 1.3 |
| Total | 45-54 | 994 | 17.0 | 0.0 | \$35,612 | 3.6 | 1.2 |
| Total | 55-64 | 740 | 12.7 | 0.0 | \$33,902 | 3.6 | 1.2 |
| Total | 65-Up | 294 | 5.0 | 0.0 | \$15,205 | 3.1 | 1.2 |
| Total | N/A | 1,294 | 22.2 | 0.0 | \$20,292 | 2.8 | 1.3 |
| Total | Total | 5,830 | 100.0 | 100.0 | \$25,533 | 3.2 | 1.3 |

Note: Persons worked at any time during the year.

County Determination: Based on county of employment in which the person made the most money in the year.

N/A: Represents persons with demographic data that is unavailable.

Wage Records in Wyoming: Employment and Earnings by Age and Gender with Place of Work in Big Horn County, 2000-2015

Average Earnings by Age and Gender with Place of Work in Big Horn County in 2009

| Gender | Age Group | Number | Age Percent | Gender Percent | Average Annual Wage | Average Quarters Worked | Average Annual Employers |
|--------|-----------|--------|-------------|----------------|---------------------|-------------------------|--------------------------|
| Women | 00-19 | 195 | 9.4 | 0.0 | \$3,234 | 2.5 | 1.3 |
| Women | 20-24 | 178 | 8.5 | 0.0 | \$9,088 | 2.9 | 1.5 |
| Women | 25-34 | 340 | 16.3 | 0.0 | \$18,730 | 3.3 | 1.3 |
| Women | 35-44 | 364 | 17.5 | 0.0 | \$24,698 | 3.6 | 1.3 |
| Women | 45-54 | 487 | 23.4 | 0.0 | \$28,206 | 3.7 | 1.2 |
| Women | 55-64 | 393 | 18.8 | 0.0 | \$27,111 | 3.6 | 1.2 |
| Women | 65-Up | 128 | 6.1 | 0.0 | \$13,354 | 3.3 | 1.1 |
| Women | Total | 2,085 | 100.0 | 37.2 | \$20,962 | 3.4 | 1.3 |
| Men | 00-19 | 195 | 8.6 | 0.0 | \$4,292 | 2.3 | 1.2 |
| Men | 20-24 | 233 | 10.3 | 0.0 | \$15,456 | 2.8 | 1.5 |
| Men | 25-34 | 427 | 18.9 | 0.0 | \$31,890 | 3.4 | 1.3 |
| Men | 35-44 | 395 | 17.5 | 0.0 | \$43,050 | 3.6 | 1.2 |
| Men | 45-54 | 497 | 22.0 | 0.0 | \$43,722 | 3.6 | 1.2 |
| Men | 55-64 | 355 | 15.7 | 0.0 | \$45,540 | 3.6 | 1.2 |
| Men | 65-Up | 154 | 6.8 | 0.0 | \$16,258 | 3.2 | 1.2 |
| Men | N/A | 1 | 0.0 | 0.0 | \$1,210 | 2.0 | 1.0 |
| Men | Total | 2,257 | 100.0 | 40.3 | \$33,434 | 3.3 | 1.3 |
| N/A | N/A | 1,260 | 100.0 | 0.0 | \$17,865 | 2.8 | 1.3 |
| N/A | Total | 1,260 | 100.0 | 22.5 | \$17,865 | 2.8 | 1.3 |
| Total | 00-19 | 390 | 7.0 | 0.0 | \$3,763 | 2.4 | 1.3 |
| Total | 20-24 | 411 | 7.3 | 0.0 | \$12,698 | 2.8 | 1.5 |
| Total | 25-34 | 767 | 13.7 | 0.0 | \$26,056 | 3.4 | 1.3 |
| Total | 35-44 | 759 | 13.5 | 0.0 | \$34,249 | 3.6 | 1.2 |
| Total | 45-54 | 984 | 17.6 | 0.0 | \$36,043 | 3.7 | 1.2 |
| Total | 55-64 | 748 | 13.4 | 0.0 | \$35,857 | 3.6 | 1.2 |
| Total | 65-Up | 282 | 5.0 | 0.0 | \$14,940 | 3.2 | 1.2 |
| Total | N/A | 1,261 | 22.5 | 0.0 | \$17,851 | 2.8 | 1.3 |
| Total | Total | 5,602 | 100.0 | 100.0 | \$25,290 | 3.2 | 1.3 |

Note: Persons worked at any time during the year.

County Determination: Based on county of employment in which the person made the most money in the year.

N/A: Represents persons with demographic data that is unavailable.

Wage Records in Wyoming: Employment and Earnings by Age and Gender with Place of Work in Big Horn County, 2000-2015

Average Earnings by Age and Gender with Place of Work in Big Horn County in 2010

| Gender | Age Group | Number | Age Percent | Gender Percent | Average Annual Wage | Average Quarters Worked | Average Annual Employers |
|--------|-----------|--------|-------------|----------------|---------------------|-------------------------|--------------------------|
| Women | 00-19 | 182 | 8.8 | 0.0 | \$3,431 | 2.5 | 1.4 |
| Women | 20-24 | 180 | 8.7 | 0.0 | \$9,621 | 2.9 | 1.6 |
| Women | 25-34 | 361 | 17.5 | 0.0 | \$19,313 | 3.3 | 1.4 |
| Women | 35-44 | 364 | 17.7 | 0.0 | \$25,443 | 3.6 | 1.3 |
| Women | 45-54 | 464 | 22.5 | 0.0 | \$29,883 | 3.7 | 1.2 |
| Women | 55-64 | 384 | 18.6 | 0.0 | \$28,112 | 3.7 | 1.2 |
| Women | 65-Up | 127 | 6.2 | 0.0 | \$15,716 | 3.3 | 1.1 |
| Women | Total | 2,062 | 100.0 | 36.6 | \$21,943 | 3.4 | 1.3 |
| Men | 00-19 | 183 | 7.8 | 0.0 | \$4,885 | 2.3 | 1.3 |
| Men | 20-24 | 252 | 10.8 | 0.0 | \$15,886 | 2.9 | 1.5 |
| Men | 25-34 | 427 | 18.3 | 0.0 | \$36,168 | 3.5 | 1.3 |
| Men | 35-44 | 420 | 18.0 | 0.0 | \$44,563 | 3.6 | 1.2 |
| Men | 45-54 | 491 | 21.0 | 0.0 | \$44,818 | 3.7 | 1.2 |
| Men | 55-64 | 408 | 17.4 | 0.0 | \$44,648 | 3.6 | 1.2 |
| Men | 65-Up | 158 | 6.8 | 0.0 | \$18,848 | 3.2 | 1.1 |
| Men | Total | 2,339 | 100.0 | 41.5 | \$35,167 | 3.4 | 1.3 |
| N/A | N/A | 1,237 | 100.0 | 0.0 | \$19,871 | 2.8 | 1.3 |
| N/A | Total | 1,237 | 100.0 | 21.9 | \$19,871 | 2.8 | 1.3 |
| Total | 00-19 | 365 | 6.5 | 0.0 | \$4,160 | 2.4 | 1.3 |
| Total | 20-24 | 432 | 7.7 | 0.0 | \$13,275 | 2.9 | 1.5 |
| Total | 25-34 | 788 | 14.0 | 0.0 | \$28,446 | 3.4 | 1.3 |
| Total | 35-44 | 784 | 13.9 | 0.0 | \$35,685 | 3.6 | 1.3 |
| Total | 45-54 | 955 | 16.9 | 0.0 | \$37,562 | 3.7 | 1.2 |
| Total | 55-64 | 792 | 14.0 | 0.0 | \$36,630 | 3.6 | 1.2 |
| Total | 65-Up | 285 | 5.1 | 0.0 | \$17,452 | 3.2 | 1.1 |
| Total | N/A | 1,237 | 21.9 | 0.0 | \$19,871 | 2.8 | 1.3 |
| Total | Total | 5,638 | 100.0 | 100.0 | \$26,975 | 3.3 | 1.3 |

Note: Persons worked at any time during the year.

County Determination: Based on county of employment in which the person made the most money in the year.

N/A: Represents persons with demographic data that is unavailable.

Wage Records in Wyoming: Employment and Earnings by Age and Gender with Place of Work in Big Horn County, 2000-2015

Average Earnings by Age and Gender with Place of Work in Big Horn County in 2011

| Gender | Age Group | Number | Age Percent | Gender Percent | Average Annual Wage | Average Quarters Worked | Average Annual Employers |
|--------|-----------|--------|-------------|----------------|---------------------|-------------------------|--------------------------|
| Women | 00-19 | 180 | 8.7 | 0.0 | \$3,469 | 2.6 | 1.3 |
| Women | 20-24 | 178 | 8.6 | 0.0 | \$10,084 | 3.0 | 1.6 |
| Women | 25-34 | 377 | 18.2 | 0.0 | \$18,762 | 3.2 | 1.4 |
| Women | 35-44 | 372 | 18.0 | 0.0 | \$25,391 | 3.6 | 1.3 |
| Women | 45-54 | 451 | 21.8 | 0.0 | \$30,140 | 3.7 | 1.2 |
| Women | 55-64 | 381 | 18.4 | 0.0 | \$28,552 | 3.7 | 1.2 |
| Women | 65-Up | 133 | 6.4 | 0.0 | \$16,889 | 3.3 | 1.1 |
| Women | Total | 2,072 | 100.0 | 35.6 | \$22,034 | 3.4 | 1.3 |
| Men | 00-19 | 197 | 8.1 | 0.0 | \$4,627 | 2.4 | 1.3 |
| Men | 20-24 | 289 | 11.9 | 0.0 | \$17,691 | 2.9 | 1.5 |
| Men | 25-34 | 457 | 18.8 | 0.0 | \$35,652 | 3.4 | 1.3 |
| Men | 35-44 | 425 | 17.5 | 0.0 | \$45,416 | 3.6 | 1.3 |
| Men | 45-54 | 487 | 20.1 | 0.0 | \$45,566 | 3.6 | 1.2 |
| Men | 55-64 | 407 | 16.8 | 0.0 | \$46,091 | 3.6 | 1.2 |
| Men | 65-Up | 165 | 6.8 | 0.0 | \$22,172 | 3.1 | 1.1 |
| Men | Total | 2,427 | 100.0 | 41.7 | \$35,528 | 3.3 | 1.3 |
| N/A | N/A | 1,316 | 100.0 | 0.0 | \$20,638 | 2.8 | 1.3 |
| N/A | Total | 1,316 | 100.0 | 22.6 | \$20,638 | 2.8 | 1.3 |
| Total | 00-19 | 377 | 6.5 | 0.0 | \$4,074 | 2.5 | 1.3 |
| Total | 20-24 | 467 | 8.0 | 0.0 | \$14,791 | 2.9 | 1.5 |
| Total | 25-34 | 834 | 14.3 | 0.0 | \$28,017 | 3.3 | 1.4 |
| Total | 35-44 | 797 | 13.7 | 0.0 | \$36,069 | 3.6 | 1.3 |
| Total | 45-54 | 938 | 16.1 | 0.0 | \$38,149 | 3.7 | 1.2 |
| Total | 55-64 | 788 | 13.6 | 0.0 | \$37,611 | 3.6 | 1.2 |
| Total | 65-Up | 298 | 5.1 | 0.0 | \$19,814 | 3.2 | 1.1 |
| Total | N/A | 1,316 | 22.6 | 0.0 | \$20,638 | 2.8 | 1.3 |
| Total | Total | 5,815 | 100.0 | 100.0 | \$27,350 | 3.2 | 1.3 |

Note: Persons worked at any time during the year.

County Determination: Based on county of employment in which the person made the most money in the year.

N/A: Represents persons with demographic data that is unavailable.

Wage Records in Wyoming: Employment and Earnings by Age and Gender with Place of Work in Big Horn County, 2000-2015

Average Earnings by Age and Gender with Place of Work in Big Horn County in 2012

| Gender | Age Group | Number | Age Percent | Gender Percent | Average Annual Wage | Average Quarters Worked | Average Annual Employers |
|--------|-----------|--------|-------------|----------------|---------------------|-------------------------|--------------------------|
| Women | 00-19 | 179 | 8.7 | 0.0 | \$3,394 | 2.4 | 1.3 |
| Women | 20-24 | 174 | 8.4 | 0.0 | \$9,902 | 2.9 | 1.7 |
| Women | 25-34 | 364 | 17.6 | 0.0 | \$21,870 | 3.4 | 1.5 |
| Women | 35-44 | 368 | 17.8 | 0.0 | \$27,004 | 3.6 | 1.3 |
| Women | 45-54 | 440 | 21.3 | 0.0 | \$32,518 | 3.7 | 1.2 |
| Women | 55-64 | 409 | 19.8 | 0.0 | \$28,725 | 3.6 | 1.2 |
| Women | 65-Up | 132 | 6.4 | 0.0 | \$16,644 | 3.4 | 1.1 |
| Women | Total | 2,066 | 100.0 | 35.6 | \$23,467 | 3.4 | 1.3 |
| Men | 00-19 | 207 | 8.5 | 0.0 | \$5,396 | 2.4 | 1.3 |
| Men | 20-24 | 289 | 11.9 | 0.0 | \$19,250 | 3.0 | 1.5 |
| Men | 25-34 | 457 | 18.8 | 0.0 | \$36,927 | 3.5 | 1.3 |
| Men | 35-44 | 430 | 17.7 | 0.0 | \$46,932 | 3.6 | 1.3 |
| Men | 45-54 | 476 | 19.5 | 0.0 | \$48,297 | 3.7 | 1.2 |
| Men | 55-64 | 402 | 16.5 | 0.0 | \$48,661 | 3.7 | 1.1 |
| Men | 65-Up | 173 | 7.1 | 0.0 | \$25,170 | 3.3 | 1.2 |
| Men | N/A | 1 | 0.0 | 0.0 | \$39,600 | 4.0 | 1.0 |
| Men | Total | 2,435 | 100.0 | 42.0 | \$37,241 | 3.4 | 1.3 |
| N/A | N/A | 1,300 | 100.0 | 0.0 | \$22,835 | 2.9 | 1.3 |
| N/A | Total | 1,300 | 100.0 | 22.4 | \$22,835 | 2.9 | 1.3 |
| Total | 00-19 | 386 | 6.7 | 0.0 | \$4,467 | 2.4 | 1.3 |
| Total | 20-24 | 463 | 8.0 | 0.0 | \$15,737 | 3.0 | 1.5 |
| Total | 25-34 | 821 | 14.2 | 0.0 | \$30,251 | 3.5 | 1.4 |
| Total | 35-44 | 798 | 13.8 | 0.0 | \$37,742 | 3.6 | 1.3 |
| Total | 45-54 | 916 | 15.8 | 0.0 | \$40,717 | 3.7 | 1.2 |
| Total | 55-64 | 811 | 14.0 | 0.0 | \$38,607 | 3.7 | 1.2 |
| Total | 65-Up | 305 | 5.3 | 0.0 | \$21,480 | 3.4 | 1.2 |
| Total | N/A | 1,301 | 22.4 | 0.0 | \$22,848 | 2.9 | 1.3 |
| Total | Total | 5,801 | 100.0 | 100.0 | \$29,107 | 3.3 | 1.3 |

Note: Persons worked at any time during the year.

County Determination: Based on county of employment in which the person made the most money in the year.

N/A: Represents persons with demographic data that is unavailable.

Wage Records in Wyoming: Employment and Earnings by Age and Gender with Place of Work in Big Horn County, 2000-2015

Average Earnings by Age and Gender with Place of Work in Big Horn County in 2013

| Gender | Age Group | Number | Age Percent | Gender Percent | Average Annual Wage | Average Quarters Worked | Average Annual Employers |
|--------|-----------|--------|-------------|----------------|---------------------|-------------------------|--------------------------|
| Women | 00-19 | 170 | 8.4 | 0.0 | \$3,549 | 2.4 | 1.3 |
| Women | 20-24 | 151 | 7.4 | 0.0 | \$10,809 | 3.0 | 1.6 |
| Women | 25-34 | 377 | 18.6 | 0.0 | \$20,877 | 3.3 | 1.4 |
| Women | 35-44 | 351 | 17.3 | 0.0 | \$29,301 | 3.6 | 1.3 |
| Women | 45-54 | 416 | 20.5 | 0.0 | \$32,614 | 3.6 | 1.2 |
| Women | 55-64 | 412 | 20.3 | 0.0 | \$30,014 | 3.7 | 1.2 |
| Women | 65-Up | 150 | 7.4 | 0.0 | \$16,667 | 3.4 | 1.1 |
| Women | Total | 2,027 | 100.0 | 35.9 | \$24,087 | 3.4 | 1.3 |
| Men | 00-19 | 168 | 7.0 | 0.0 | \$5,229 | 2.4 | 1.3 |
| Men | 20-24 | 274 | 11.4 | 0.0 | \$18,869 | 2.9 | 1.4 |
| Men | 25-34 | 478 | 19.8 | 0.0 | \$37,461 | 3.5 | 1.3 |
| Men | 35-44 | 431 | 17.9 | 0.0 | \$49,877 | 3.7 | 1.2 |
| Men | 45-54 | 457 | 19.0 | 0.0 | \$49,421 | 3.7 | 1.2 |
| Men | 55-64 | 419 | 17.4 | 0.0 | \$48,193 | 3.7 | 1.1 |
| Men | 65-Up | 183 | 7.6 | 0.0 | \$24,924 | 3.3 | 1.1 |
| Men | N/A | 1 | 0.0 | 0.0 | \$42,400 | 4.0 | 1.0 |
| Men | Total | 2,411 | 100.0 | 42.7 | \$38,504 | 3.4 | 1.2 |
| N/A | N/A | 1,212 | 100.0 | 0.0 | \$22,799 | 2.9 | 1.3 |
| N/A | Total | 1,212 | 100.0 | 21.5 | \$22,799 | 2.9 | 1.3 |
| Total | 00-19 | 338 | 6.0 | 0.0 | \$4,384 | 2.4 | 1.3 |
| Total | 20-24 | 425 | 7.5 | 0.0 | \$16,005 | 3.0 | 1.5 |
| Total | 25-34 | 855 | 15.1 | 0.0 | \$30,149 | 3.4 | 1.3 |
| Total | 35-44 | 782 | 13.8 | 0.0 | \$40,642 | 3.6 | 1.3 |
| Total | 45-54 | 873 | 15.5 | 0.0 | \$41,412 | 3.7 | 1.2 |
| Total | 55-64 | 831 | 14.7 | 0.0 | \$39,180 | 3.7 | 1.2 |
| Total | 65-Up | 333 | 5.9 | 0.0 | \$21,205 | 3.4 | 1.1 |
| Total | N/A | 1,213 | 21.5 | 0.0 | \$22,816 | 2.9 | 1.3 |
| Total | Total | 5,650 | 100.0 | 100.0 | \$29,963 | 3.3 | 1.3 |

Note: Persons worked at any time during the year.

County Determination: Based on county of employment in which the person made the most money in the year.

N/A: Represents persons with demographic data that is unavailable.

Wage Records in Wyoming: Employment and Earnings by Age and Gender with Place of Work in Big Horn County, 2000-2015

Average Earnings by Age and Gender with Place of Work in Big Horn County in 2014

| Gender | Age Group | Number | Age Percent | Gender Percent | Average Annual Wage | Average Quarters Worked | Average Annual Employers |
|--------|-----------|--------|-------------|----------------|---------------------|-------------------------|--------------------------|
| Women | 00-19 | 168 | 8.1 | 0.0 | \$3,634 | 2.4 | 1.4 |
| Women | 20-24 | 181 | 8.7 | 0.0 | \$11,156 | 2.9 | 1.7 |
| Women | 25-34 | 389 | 18.7 | 0.0 | \$21,335 | 3.3 | 1.4 |
| Women | 35-44 | 351 | 16.9 | 0.0 | \$29,902 | 3.7 | 1.4 |
| Women | 45-54 | 416 | 20.0 | 0.0 | \$33,346 | 3.6 | 1.3 |
| Women | 55-64 | 414 | 19.9 | 0.0 | \$30,851 | 3.6 | 1.2 |
| Women | 65-Up | 162 | 7.8 | 0.0 | \$16,512 | 3.3 | 1.1 |
| Women | N/A | 1 | 0.0 | 0.0 | \$6,240 | 1.0 | 1.0 |
| Women | Total | 2,082 | 100.0 | 35.9 | \$24,376 | 3.4 | 1.3 |
| Men | 00-19 | 182 | 7.3 | 0.0 | \$5,083 | 2.3 | 1.3 |
| Men | 20-24 | 276 | 11.1 | 0.0 | \$21,346 | 3.1 | 1.6 |
| Men | 25-34 | 500 | 20.2 | 0.0 | \$38,958 | 3.4 | 1.4 |
| Men | 35-44 | 438 | 17.7 | 0.0 | \$50,328 | 3.6 | 1.3 |
| Men | 45-54 | 452 | 18.2 | 0.0 | \$53,740 | 3.7 | 1.2 |
| Men | 55-64 | 429 | 17.3 | 0.0 | \$50,321 | 3.7 | 1.2 |
| Men | 65-Up | 200 | 8.1 | 0.0 | \$27,252 | 3.3 | 1.2 |
| Men | N/A | 1 | 0.0 | 0.0 | \$41,726 | 4.0 | 1.0 |
| Men | Total | 2,478 | 100.0 | 42.7 | \$40,238 | 3.4 | 1.3 |
| N/A | N/A | 1,240 | 100.0 | 0.0 | \$24,152 | 2.9 | 1.3 |
| N/A | Total | 1,240 | 100.0 | 21.4 | \$24,152 | 2.9 | 1.3 |
| Total | 00-19 | 350 | 6.0 | 0.0 | \$4,387 | 2.4 | 1.3 |
| Total | 20-24 | 457 | 7.9 | 0.0 | \$17,310 | 3.0 | 1.6 |
| Total | 25-34 | 889 | 15.3 | 0.0 | \$31,247 | 3.3 | 1.4 |
| Total | 35-44 | 789 | 13.6 | 0.0 | \$41,241 | 3.6 | 1.3 |
| Total | 45-54 | 868 | 15.0 | 0.0 | \$43,966 | 3.7 | 1.2 |
| Total | 55-64 | 843 | 14.5 | 0.0 | \$40,759 | 3.6 | 1.2 |
| Total | 65-Up | 362 | 6.2 | 0.0 | \$22,446 | 3.3 | 1.2 |
| Total | N/A | 1,242 | 21.4 | 0.0 | \$24,151 | 2.9 | 1.3 |
| Total | Total | 5,800 | 100.0 | 100.0 | \$31,105 | 3.3 | 1.3 |

Note: Persons worked at any time during the year.

County Determination: Based on county of employment in which the person made the most money in the year.

N/A: Represents persons with demographic data that is unavailable.

Wage Records in Wyoming: Employment and Earnings by Age and Gender with Place of Work in Big Horn County, 2000-2015

Average Earnings by Age and Gender with Place of Work in Big Horn County in 2015

| Gender | Age Group | Number | Age Percent | Gender Percent | Average Annual Wage | Average Quarters Worked | Average Annual Employers |
|--------|-----------|--------|-------------|----------------|---------------------|-------------------------|--------------------------|
| Women | 00-19 | 176 | 8.6 | 0.0 | \$3,652 | 2.4 | 1.4 |
| Women | 20-24 | 162 | 7.9 | 0.0 | \$12,393 | 3.0 | 1.5 |
| Women | 25-34 | 364 | 17.8 | 0.0 | \$22,300 | 3.4 | 1.4 |
| Women | 35-44 | 387 | 18.9 | 0.0 | \$29,166 | 3.6 | 1.3 |
| Women | 45-54 | 395 | 19.3 | 0.0 | \$34,665 | 3.6 | 1.3 |
| Women | 55-64 | 387 | 18.9 | 0.0 | \$31,519 | 3.7 | 1.2 |
| Women | 65-Up | 176 | 8.6 | 0.0 | \$17,137 | 3.2 | 1.1 |
| Women | Total | 2,047 | 100.0 | 35.9 | \$24,896 | 3.4 | 1.3 |
| Men | 00-19 | 164 | 6.7 | 0.0 | \$4,828 | 2.3 | 1.3 |
| Men | 20-24 | 276 | 11.2 | 0.0 | \$20,420 | 2.9 | 1.5 |
| Men | 25-34 | 494 | 20.1 | 0.0 | \$40,065 | 3.5 | 1.3 |
| Men | 35-44 | 456 | 18.6 | 0.0 | \$49,993 | 3.7 | 1.3 |
| Men | 45-54 | 451 | 18.3 | 0.0 | \$54,569 | 3.7 | 1.2 |
| Men | 55-64 | 423 | 17.2 | 0.0 | \$51,908 | 3.7 | 1.2 |
| Men | 65-Up | 193 | 7.9 | 0.0 | \$28,919 | 3.3 | 1.1 |
| Men | N/A | 1 | 0.0 | 0.0 | \$29,751 | 3.0 | 1.0 |
| Men | Total | 2,458 | 100.0 | 43.1 | \$41,170 | 3.4 | 1.3 |
| N/A | N/A | 1,201 | 100.0 | 0.0 | \$22,286 | 2.8 | 1.3 |
| N/A | Total | 1,201 | 100.0 | 21.0 | \$22,286 | 2.8 | 1.3 |
| Total | 00-19 | 340 | 6.0 | 0.0 | \$4,219 | 2.4 | 1.3 |
| Total | 20-24 | 438 | 7.7 | 0.0 | \$17,451 | 2.9 | 1.5 |
| Total | 25-34 | 858 | 15.0 | 0.0 | \$32,528 | 3.5 | 1.4 |
| Total | 35-44 | 843 | 14.8 | 0.0 | \$40,432 | 3.7 | 1.3 |
| Total | 45-54 | 846 | 14.8 | 0.0 | \$45,276 | 3.6 | 1.2 |
| Total | 55-64 | 810 | 14.2 | 0.0 | \$42,167 | 3.7 | 1.2 |
| Total | 65-Up | 369 | 6.5 | 0.0 | \$23,299 | 3.3 | 1.1 |
| Total | N/A | 1,202 | 21.1 | 0.0 | \$22,292 | 2.8 | 1.3 |
| Total | Total | 5,706 | 100.0 | 100.0 | \$31,357 | 3.3 | 1.3 |

Note: Persons worked at any time during the year.

County Determination: Based on county of employment in which the person made the most money in the year.

N/A: Represents persons with demographic data that is unavailable.