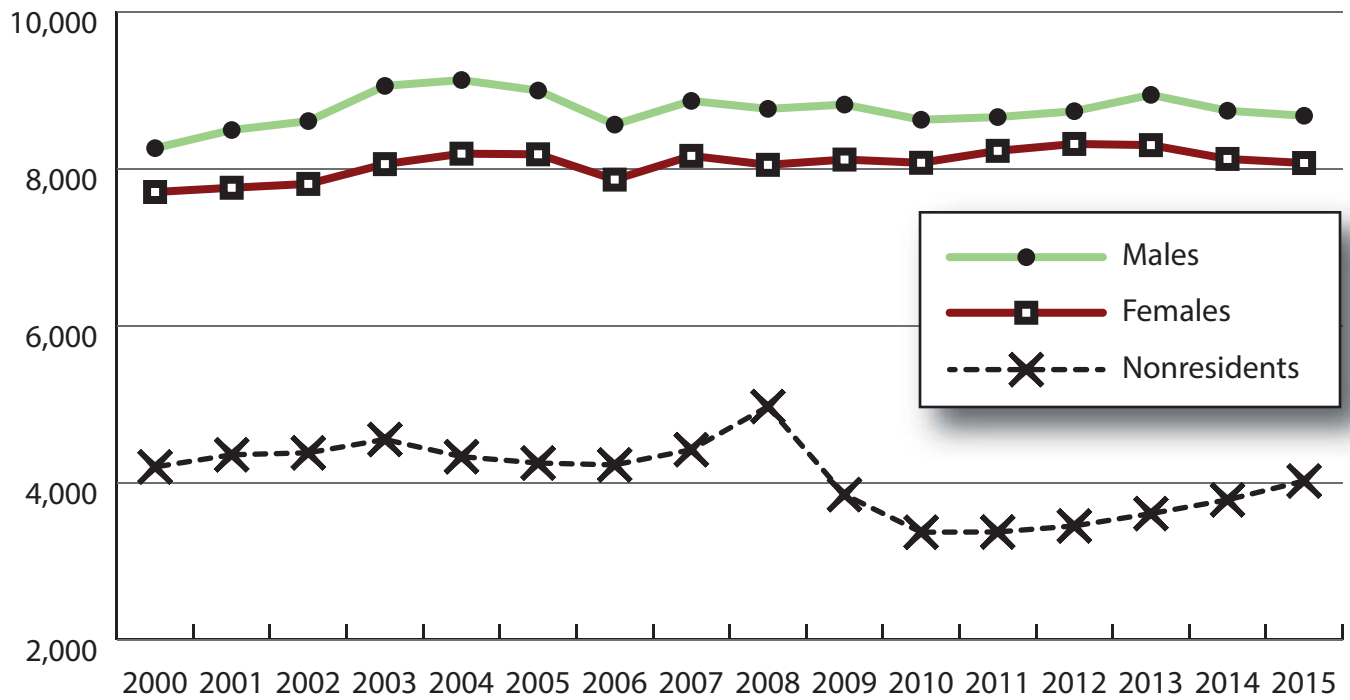
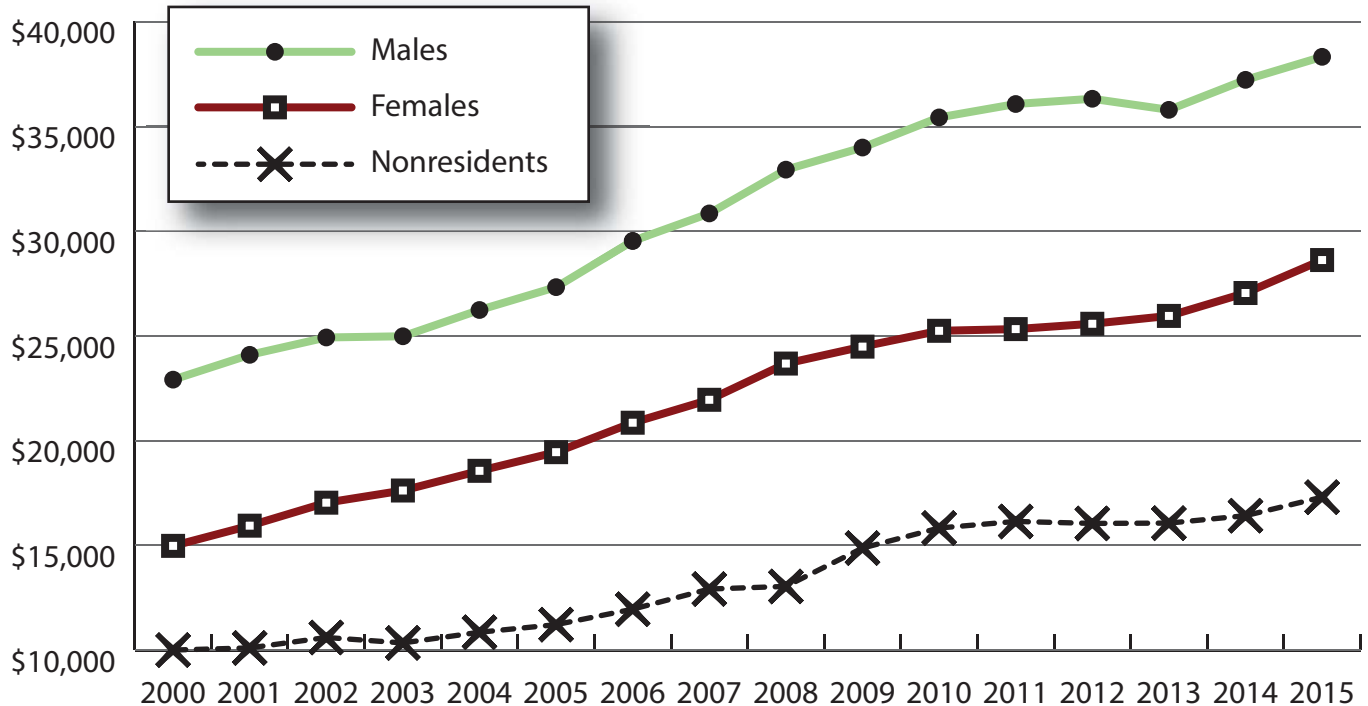


Wage Records in Wyoming: Employment and Earnings by Age and Gender with Place of Work in Albany County, 2000-2015

Total Number of Persons Working in Albany County at Any Time by Gender, 2000-2015



Average Annual Earnings for Persons Working in Albany County at Any Time by Gender, 2000-2015



Wage Records in Wyoming: Employment and Earnings by Age and Gender with Place of Work in Albany County, 2000-2015

Average Earnings by Age and Gender with Place of Work in Albany County in 2000

Gender	Age Group	Number	Age Percent	Gender Percent	Average Annual Wage	Average Quarters Worked	Average Annual Employers
Women	00-19	767	10.0	0.0	\$2,819	2.6	1.7
Women	20-24	1,727	22.4	0.0	\$6,096	3.0	1.9
Women	25-34	1,614	21.0	0.0	\$14,329	3.2	1.5
Women	35-44	1,430	18.6	0.0	\$20,684	3.5	1.4
Women	45-54	1,401	18.2	0.0	\$24,980	3.7	1.3
Women	55-64	610	7.9	0.0	\$21,882	3.6	1.2
Women	65-Up	148	1.9	0.0	\$10,546	3.0	1.1
Women	N/A	5	0.1	0.0	\$10,629	2.6	1.2
Women	Total	7,702	100.0	38.2	\$14,977	3.3	1.5
Men	00-19	817	9.9	0.0	\$2,866	2.4	1.6
Men	20-24	1,721	20.8	0.0	\$7,309	2.8	1.8
Men	25-34	1,887	22.8	0.0	\$18,252	3.2	1.5
Men	35-44	1,473	17.8	0.0	\$32,075	3.5	1.3
Men	45-54	1,463	17.7	0.0	\$39,118	3.6	1.2
Men	55-64	696	8.4	0.0	\$45,060	3.6	1.2
Men	65-Up	199	2.4	0.0	\$19,571	3.0	1.1
Men	N/A	4	0.0	0.0	\$44,516	3.3	1.0
Men	Total	8,260	100.0	41.0	\$22,914	3.2	1.4
N/A	N/A	4,201	100.0	0.0	\$10,002	2.2	1.3
N/A	Total	4,201	100.0	20.8	\$10,002	2.2	1.3
Total	00-19	1,584	7.9	0.0	\$2,843	2.5	1.7
Total	20-24	3,448	17.1	0.0	\$6,702	2.9	1.8
Total	25-34	3,501	17.4	0.0	\$16,444	3.2	1.5
Total	35-44	2,903	14.4	0.0	\$26,464	3.5	1.4
Total	45-54	2,864	14.2	0.0	\$32,202	3.6	1.3
Total	55-64	1,306	6.5	0.0	\$34,234	3.6	1.2
Total	65-Up	347	1.7	0.0	\$15,722	3.0	1.1
Total	N/A	4,210	20.9	0.0	\$10,035	2.2	1.3
Total	Total	20,163	100.0	100.0	\$17,192	3.0	1.4

Note: Persons worked at any time during the year.

County Determination: Based on county of employment in which the person made the most money in the year.

N/A: Represents persons with demographic data that is unavailable.

Wage Records in Wyoming: Employment and Earnings by Age and Gender with Place of Work in Albany County, 2000-2015

Average Earnings by Age and Gender with Place of Work in Albany County in 2001

Gender	Age Group	Number	Age Percent	Gender Percent	Average Annual Wage	Average Quarters Worked	Average Annual Employers
Women	00-19	706	9.1	0.0	\$2,894	2.6	1.7
Women	20-24	1,786	23.0	0.0	\$6,823	2.9	1.8
Women	25-34	1,595	20.6	0.0	\$15,314	3.2	1.5
Women	35-44	1,389	17.9	0.0	\$21,501	3.5	1.4
Women	45-54	1,459	18.8	0.0	\$25,976	3.6	1.3
Women	55-64	667	8.6	0.0	\$23,103	3.6	1.2
Women	65-Up	152	2.0	0.0	\$11,777	3.1	1.1
Women	N/A	2	0.0	0.0	\$9,227	3.5	1.0
Women	Total	7,756	100.0	37.6	\$15,941	3.2	1.5
Men	00-19	860	10.1	0.0	\$2,782	2.4	1.6
Men	20-24	1,787	21.0	0.0	\$7,763	2.8	1.7
Men	25-34	1,908	22.5	0.0	\$19,764	3.2	1.5
Men	35-44	1,473	17.3	0.0	\$35,222	3.4	1.3
Men	45-54	1,491	17.6	0.0	\$40,327	3.6	1.2
Men	55-64	762	9.0	0.0	\$44,965	3.5	1.2
Men	65-Up	207	2.4	0.0	\$20,549	3.1	1.2
Men	N/A	3	0.0	0.0	\$40,693	4.0	1.0
Men	Total	8,491	100.0	41.2	\$24,099	3.2	1.4
N/A	N/A	4,356	100.0	0.0	\$10,104	2.3	1.3
N/A	Total	4,356	100.0	21.1	\$10,104	2.3	1.3
Total	00-19	1,566	7.6	0.0	\$2,833	2.5	1.6
Total	20-24	3,573	17.3	0.0	\$7,293	2.8	1.8
Total	25-34	3,503	17.0	0.0	\$17,738	3.2	1.5
Total	35-44	2,862	13.9	0.0	\$28,563	3.4	1.4
Total	45-54	2,950	14.3	0.0	\$33,229	3.6	1.2
Total	55-64	1,429	6.9	0.0	\$34,761	3.6	1.2
Total	65-Up	359	1.7	0.0	\$16,835	3.1	1.1
Total	N/A	4,361	21.2	0.0	\$10,124	2.3	1.3
Total	Total	20,603	100.0	100.0	\$18,069	3.0	1.4

Note: Persons worked at any time during the year.

County Determination: Based on county of employment in which the person made the most money in the year.

N/A: Represents persons with demographic data that is unavailable.

Wage Records in Wyoming: Employment and Earnings by Age and Gender with Place of Work in Albany County, 2000-2015

Average Earnings by Age and Gender with Place of Work in Albany County in 2002

Gender	Age Group	Number	Age Percent	Gender Percent	Average Annual Wage	Average Quarters Worked	Average Annual Employers
Women	00-19	685	8.8	0.0	\$3,296	2.7	1.7
Women	20-24	1,799	23.0	0.0	\$7,041	2.9	1.7
Women	25-34	1,651	21.2	0.0	\$16,062	3.2	1.4
Women	35-44	1,307	16.7	0.0	\$23,261	3.5	1.3
Women	45-54	1,491	19.1	0.0	\$27,662	3.6	1.3
Women	55-64	715	9.2	0.0	\$25,275	3.6	1.2
Women	65-Up	155	2.0	0.0	\$11,762	3.1	1.1
Women	N/A	2	0.0	0.0	\$3,859	2.5	1.0
Women	Total	7,805	100.0	37.5	\$17,039	3.3	1.4
Men	00-19	814	9.5	0.0	\$2,878	2.4	1.5
Men	20-24	1,822	21.2	0.0	\$7,782	2.8	1.7
Men	25-34	2,055	23.9	0.0	\$19,502	3.1	1.4
Men	35-44	1,427	16.6	0.0	\$35,683	3.5	1.3
Men	45-54	1,466	17.0	0.0	\$43,677	3.6	1.2
Men	55-64	797	9.3	0.0	\$47,141	3.6	1.1
Men	65-Up	219	2.5	0.0	\$24,239	3.2	1.1
Men	N/A	5	0.1	0.0	\$14,381	2.4	1.0
Men	Total	8,605	100.0	41.4	\$24,928	3.2	1.4
N/A	N/A	4,381	100.0	0.0	\$10,602	2.3	1.3
N/A	Total	4,381	100.0	21.1	\$10,602	2.3	1.3
Total	00-19	1,499	7.2	0.0	\$3,069	2.5	1.6
Total	20-24	3,621	17.4	0.0	\$7,414	2.8	1.7
Total	25-34	3,706	17.8	0.0	\$17,970	3.2	1.4
Total	35-44	2,734	13.1	0.0	\$29,745	3.5	1.3
Total	45-54	2,957	14.2	0.0	\$35,602	3.6	1.2
Total	55-64	1,512	7.3	0.0	\$36,801	3.6	1.2
Total	65-Up	374	1.8	0.0	\$19,068	3.1	1.1
Total	N/A	4,388	21.1	0.0	\$10,603	2.3	1.3
Total	Total	20,791	100.0	100.0	\$18,948	3.0	1.4

Note: Persons worked at any time during the year.

County Determination: Based on county of employment in which the person made the most money in the year.

N/A: Represents persons with demographic data that is unavailable.

Wage Records in Wyoming: Employment and Earnings by Age and Gender with Place of Work in Albany County, 2000-2015

Average Earnings by Age and Gender with Place of Work in Albany County in 2003

Gender	Age Group	Number	Age Percent	Gender Percent	Average Annual Wage	Average Quarters Worked	Average Annual Employers
Women	00-19	659	8.2	0.0	\$2,907	2.5	1.7
Women	20-24	1,879	23.3	0.0	\$7,066	2.9	1.7
Women	25-34	1,782	22.1	0.0	\$16,226	3.2	1.5
Women	35-44	1,283	15.9	0.0	\$24,412	3.5	1.3
Women	45-54	1,521	18.9	0.0	\$29,168	3.7	1.2
Women	55-64	748	9.3	0.0	\$26,863	3.6	1.2
Women	65-Up	182	2.3	0.0	\$11,281	2.9	1.0
Women	N/A	3	0.0	0.0	\$7,024	2.3	1.0
Women	Total	8,057	100.0	37.2	\$17,620	3.2	1.4
Men	00-19	798	8.8	0.0	\$2,873	2.3	1.5
Men	20-24	1,962	21.7	0.0	\$7,710	2.7	1.6
Men	25-34	2,238	24.7	0.0	\$19,459	3.1	1.4
Men	35-44	1,470	16.2	0.0	\$36,203	3.4	1.2
Men	45-54	1,493	16.5	0.0	\$44,854	3.6	1.2
Men	55-64	839	9.3	0.0	\$46,477	3.6	1.1
Men	65-Up	247	2.7	0.0	\$24,092	3.0	1.1
Men	N/A	6	0.1	0.0	\$15,784	2.7	1.2
Men	Total	9,053	100.0	41.8	\$24,985	3.1	1.4
N/A	N/A	4,551	100.0	0.0	\$10,342	2.3	1.3
N/A	Total	4,551	100.0	21.0	\$10,342	2.3	1.3
Total	00-19	1,457	6.7	0.0	\$2,888	2.4	1.6
Total	20-24	3,841	17.7	0.0	\$7,395	2.8	1.7
Total	25-34	4,020	18.6	0.0	\$18,026	3.1	1.4
Total	35-44	2,753	12.7	0.0	\$30,708	3.4	1.3
Total	45-54	3,014	13.9	0.0	\$36,938	3.6	1.2
Total	55-64	1,587	7.3	0.0	\$37,233	3.6	1.2
Total	65-Up	429	2.0	0.0	\$18,657	3.0	1.1
Total	N/A	4,560	21.1	0.0	\$10,347	2.3	1.3
Total	Total	21,661	100.0	100.0	\$19,169	3.0	1.4

Note: Persons worked at any time during the year.

County Determination: Based on county of employment in which the person made the most money in the year.

N/A: Represents persons with demographic data that is unavailable.

Wage Records in Wyoming: Employment and Earnings by Age and Gender with Place of Work in Albany County, 2000-2015

Average Earnings by Age and Gender with Place of Work in Albany County in 2004

Gender	Age Group	Number	Age Percent	Gender Percent	Average Annual Wage	Average Quarters Worked	Average Annual Employers
Women	00-19	638	7.8	0.0	\$3,084	2.5	1.7
Women	20-24	1,834	22.4	0.0	\$7,820	3.1	1.7
Women	25-34	1,901	23.2	0.0	\$17,076	3.3	1.5
Women	35-44	1,268	15.5	0.0	\$25,179	3.5	1.3
Women	45-54	1,538	18.8	0.0	\$29,793	3.6	1.2
Women	55-64	819	10.0	0.0	\$28,216	3.6	1.2
Women	65-Up	189	2.3	0.0	\$12,447	3.4	1.1
Women	N/A	3	0.0	0.0	\$8,536	3.0	1.0
Women	Total	8,190	100.0	37.8	\$18,560	3.3	1.4
Men	00-19	746	8.2	0.0	\$2,734	2.3	1.5
Men	20-24	1,973	21.6	0.0	\$8,015	2.9	1.6
Men	25-34	2,272	24.9	0.0	\$20,047	3.3	1.4
Men	35-44	1,471	16.1	0.0	\$39,210	3.5	1.2
Men	45-54	1,493	16.4	0.0	\$45,430	3.6	1.2
Men	55-64	916	10.0	0.0	\$47,710	3.6	1.1
Men	65-Up	252	2.8	0.0	\$26,789	3.3	1.1
Men	N/A	5	0.1	0.0	\$31,020	2.6	1.0
Men	Total	9,128	100.0	42.2	\$26,240	3.2	1.4
N/A	N/A	4,332	100.0	0.0	\$10,853	2.5	1.3
N/A	Total	4,332	100.0	20.0	\$10,853	2.5	1.3
Total	00-19	1,384	6.4	0.0	\$2,895	2.4	1.6
Total	20-24	3,807	17.6	0.0	\$7,921	3.0	1.7
Total	25-34	4,173	19.3	0.0	\$18,693	3.3	1.4
Total	35-44	2,739	12.7	0.0	\$32,715	3.5	1.3
Total	45-54	3,031	14.0	0.0	\$37,496	3.6	1.2
Total	55-64	1,735	8.0	0.0	\$38,508	3.6	1.2
Total	65-Up	441	2.0	0.0	\$20,642	3.3	1.1
Total	N/A	4,340	20.0	0.0	\$10,875	2.5	1.3
Total	Total	21,650	100.0	100.0	\$20,256	3.1	1.4

Note: Persons worked at any time during the year.

County Determination: Based on county of employment in which the person made the most money in the year.

N/A: Represents persons with demographic data that is unavailable.

Wage Records in Wyoming: Employment and Earnings by Age and Gender with Place of Work in Albany County, 2000-2015

Average Earnings by Age and Gender with Place of Work in Albany County in 2005

Gender	Age Group	Number	Age Percent	Gender Percent	Average Annual Wage	Average Quarters Worked	Average Annual Employers
Women	00-19	636	7.8	0.0	\$3,330	2.5	1.7
Women	20-24	1,851	22.6	0.0	\$7,857	3.0	1.7
Women	25-34	1,866	22.8	0.0	\$17,700	3.3	1.5
Women	35-44	1,220	14.9	0.0	\$27,059	3.5	1.3
Women	45-54	1,530	18.7	0.0	\$31,136	3.7	1.2
Women	55-64	864	10.6	0.0	\$30,043	3.7	1.2
Women	65-Up	213	2.6	0.0	\$13,262	3.3	1.1
Women	N/A	2	0.0	0.0	\$14,407	3.5	1.0
Women	Total	8,182	100.0	38.2	\$19,451	3.3	1.4
Men	00-19	701	7.8	0.0	\$3,091	2.4	1.5
Men	20-24	1,923	21.4	0.0	\$8,287	2.8	1.6
Men	25-34	2,237	24.9	0.0	\$20,529	3.2	1.4
Men	35-44	1,468	16.3	0.0	\$40,296	3.5	1.3
Men	45-54	1,483	16.5	0.0	\$46,286	3.6	1.2
Men	55-64	924	10.3	0.0	\$50,531	3.7	1.1
Men	65-Up	257	2.9	0.0	\$28,317	3.4	1.1
Men	N/A	1	0.0	0.0	\$18,835	4.0	1.0
Men	Total	8,994	100.0	42.0	\$27,331	3.2	1.4
N/A	N/A	4,251	100.0	0.0	\$11,215	2.5	1.3
N/A	Total	4,251	100.0	19.8	\$11,215	2.5	1.3
Total	00-19	1,337	6.2	0.0	\$3,205	2.5	1.6
Total	20-24	3,774	17.6	0.0	\$8,076	2.9	1.7
Total	25-34	4,103	19.1	0.0	\$19,243	3.2	1.4
Total	35-44	2,688	12.5	0.0	\$34,288	3.5	1.3
Total	45-54	3,013	14.1	0.0	\$38,593	3.7	1.2
Total	55-64	1,788	8.3	0.0	\$40,631	3.7	1.2
Total	65-Up	470	2.2	0.0	\$21,494	3.4	1.1
Total	N/A	4,254	19.9	0.0	\$11,219	2.5	1.3
Total	Total	21,427	100.0	100.0	\$21,125	3.1	1.4

Note: Persons worked at any time during the year.

County Determination: Based on county of employment in which the person made the most money in the year.

N/A: Represents persons with demographic data that is unavailable.

Wage Records in Wyoming: Employment and Earnings by Age and Gender with Place of Work in Albany County, 2000-2015

Average Earnings by Age and Gender with Place of Work in Albany County in 2006

Gender	Age Group	Number	Age Percent	Gender Percent	Average Annual Wage	Average Quarters Worked	Average Annual Employers
Women	00-19	645	8.2	0.0	\$3,254	2.5	1.7
Women	20-24	1,686	21.5	0.0	\$8,388	3.0	1.7
Women	25-34	1,728	22.0	0.0	\$19,493	3.3	1.5
Women	35-44	1,170	14.9	0.0	\$28,911	3.5	1.3
Women	45-54	1,504	19.1	0.0	\$32,309	3.7	1.3
Women	55-64	935	11.9	0.0	\$30,666	3.7	1.2
Women	65-Up	191	2.4	0.0	\$15,260	3.3	1.1
Women	N/A	1	0.0	0.0	\$2,944	2.0	1.0
Women	Total	7,860	100.0	38.1	\$20,857	3.3	1.4
Men	00-19	739	8.6	0.0	\$3,245	2.4	1.6
Men	20-24	1,729	20.2	0.0	\$8,901	2.8	1.6
Men	25-34	2,001	23.4	0.0	\$23,673	3.3	1.5
Men	35-44	1,361	15.9	0.0	\$44,906	3.5	1.3
Men	45-54	1,454	17.0	0.0	\$46,488	3.6	1.2
Men	55-64	986	11.5	0.0	\$49,192	3.6	1.1
Men	65-Up	288	3.4	0.0	\$36,262	3.4	1.1
Men	N/A	2	0.0	0.0	\$8,090	1.5	1.0
Men	Total	8,560	100.0	41.5	\$29,537	3.2	1.4
N/A	N/A	4,227	100.0	0.0	\$11,953	2.5	1.4
N/A	Total	4,227	100.0	20.5	\$11,953	2.5	1.4
Total	00-19	1,384	6.7	0.0	\$3,249	2.4	1.6
Total	20-24	3,415	16.5	0.0	\$8,648	2.9	1.6
Total	25-34	3,729	18.1	0.0	\$21,736	3.3	1.5
Total	35-44	2,531	12.3	0.0	\$37,512	3.5	1.3
Total	45-54	2,958	14.3	0.0	\$39,279	3.6	1.2
Total	55-64	1,921	9.3	0.0	\$40,175	3.6	1.2
Total	65-Up	479	2.3	0.0	\$27,888	3.3	1.1
Total	N/A	4,230	20.5	0.0	\$11,949	2.5	1.4
Total	Total	20,647	100.0	100.0	\$22,632	3.1	1.4

Note: Persons worked at any time during the year.

County Determination: Based on county of employment in which the person made the most money in the year.

N/A: Represents persons with demographic data that is unavailable.

Wage Records in Wyoming: Employment and Earnings by Age and Gender with Place of Work in Albany County, 2000-2015

Average Earnings by Age and Gender with Place of Work in Albany County in 2007

Gender	Age Group	Number	Age Percent	Gender Percent	Average Annual Wage	Average Quarters Worked	Average Annual Employers
Women	00-19	695	8.5	0.0	\$3,321	2.5	1.8
Women	20-24	1,819	22.3	0.0	\$8,793	2.9	1.7
Women	25-34	1,748	21.4	0.0	\$21,168	3.2	1.5
Women	35-44	1,195	14.6	0.0	\$29,714	3.5	1.4
Women	45-54	1,469	18.0	0.0	\$34,847	3.6	1.3
Women	55-64	1,004	12.3	0.0	\$33,464	3.6	1.2
Women	65-Up	231	2.8	0.0	\$15,447	3.2	1.1
Women	N/A	1	0.0	0.0	\$4,901	2.0	1.0
Women	Total	8,162	100.0	38.1	\$21,952	3.3	1.5
Men	00-19	801	9.0	0.0	\$3,615	2.5	1.7
Men	20-24	1,715	19.4	0.0	\$9,557	2.8	1.7
Men	25-34	2,141	24.2	0.0	\$25,371	3.2	1.5
Men	35-44	1,379	15.6	0.0	\$45,494	3.4	1.3
Men	45-54	1,426	16.1	0.0	\$49,123	3.5	1.2
Men	55-64	1,076	12.1	0.0	\$50,725	3.6	1.2
Men	65-Up	324	3.7	0.0	\$38,349	3.2	1.1
Men	Total	8,862	100.0	41.3	\$30,851	3.2	1.4
N/A	N/A	4,421	100.0	0.0	\$12,916	2.5	1.4
N/A	Total	4,421	100.0	20.6	\$12,916	2.5	1.4
Total	00-19	1,496	7.0	0.0	\$3,478	2.5	1.7
Total	20-24	3,534	16.5	0.0	\$9,164	2.9	1.7
Total	25-34	3,889	18.1	0.0	\$23,482	3.2	1.5
Total	35-44	2,574	12.0	0.0	\$38,168	3.5	1.3
Total	45-54	2,895	13.5	0.0	\$41,879	3.6	1.3
Total	55-64	2,080	9.7	0.0	\$42,393	3.6	1.2
Total	65-Up	555	2.6	0.0	\$28,817	3.2	1.1
Total	N/A	4,422	20.6	0.0	\$12,914	2.5	1.4
Total	Total	21,445	100.0	100.0	\$23,766	3.1	1.4

Note: Persons worked at any time during the year.

County Determination: Based on county of employment in which the person made the most money in the year.

N/A: Represents persons with demographic data that is unavailable.

Wage Records in Wyoming: Employment and Earnings by Age and Gender with Place of Work in Albany County, 2000-2015

Average Earnings by Age and Gender with Place of Work in Albany County in 2008

Gender	Age Group	Number	Age Percent	Gender Percent	Average Annual Wage	Average Quarters Worked	Average Annual Employers
Women	00-19	656	8.2	0.0	\$3,566	2.6	1.7
Women	20-24	1,782	22.1	0.0	\$9,353	3.0	1.7
Women	25-34	1,748	21.7	0.0	\$23,308	3.3	1.4
Women	35-44	1,164	14.5	0.0	\$31,710	3.5	1.3
Women	45-54	1,410	17.5	0.0	\$36,787	3.7	1.3
Women	55-64	1,044	13.0	0.0	\$35,851	3.7	1.2
Women	65-Up	243	3.0	0.0	\$19,039	3.3	1.2
Women	N/A	1	0.0	0.0	\$6,610	2.0	1.0
Women	Total	8,048	100.0	37.0	\$23,682	3.3	1.4
Men	00-19	699	8.0	0.0	\$4,020	2.5	1.5
Men	20-24	1,683	19.2	0.0	\$10,190	2.9	1.6
Men	25-34	2,178	24.9	0.0	\$26,779	3.3	1.4
Men	35-44	1,405	16.0	0.0	\$47,564	3.5	1.2
Men	45-54	1,389	15.9	0.0	\$51,937	3.6	1.2
Men	55-64	1,096	12.5	0.0	\$54,200	3.6	1.1
Men	65-Up	309	3.5	0.0	\$38,647	3.3	1.1
Men	N/A	2	0.0	0.0	\$1,040	1.0	1.0
Men	Total	8,761	100.0	40.2	\$32,941	3.3	1.3
N/A	N/A	4,970	100.0	0.0	\$13,041	2.3	1.3
N/A	Total	4,970	100.0	22.8	\$13,041	2.3	1.3
Total	00-19	1,355	6.2	0.0	\$3,800	2.5	1.6
Total	20-24	3,465	15.9	0.0	\$9,760	2.9	1.6
Total	25-34	3,926	18.0	0.0	\$25,234	3.3	1.4
Total	35-44	2,569	11.8	0.0	\$40,380	3.5	1.3
Total	45-54	2,799	12.9	0.0	\$44,305	3.6	1.2
Total	55-64	2,140	9.8	0.0	\$45,249	3.7	1.2
Total	65-Up	552	2.5	0.0	\$30,015	3.3	1.1
Total	N/A	4,973	22.8	0.0	\$13,035	2.3	1.3
Total	Total	21,779	100.0	100.0	\$24,978	3.1	1.4

Note: Persons worked at any time during the year.

County Determination: Based on county of employment in which the person made the most money in the year.

N/A: Represents persons with demographic data that is unavailable.

Wage Records in Wyoming: Employment and Earnings by Age and Gender with Place of Work in Albany County, 2000-2015

Average Earnings by Age and Gender with Place of Work in Albany County in 2009

Gender	Age Group	Number	Age Percent	Gender Percent	Average Annual Wage	Average Quarters Worked	Average Annual Employers
Women	00-19	571	7.0	0.0	\$3,618	2.6	1.5
Women	20-24	1,839	22.7	0.0	\$9,129	3.1	1.6
Women	25-34	1,845	22.7	0.0	\$23,480	3.3	1.4
Women	35-44	1,168	14.4	0.0	\$33,526	3.6	1.3
Women	45-54	1,342	16.5	0.0	\$37,599	3.7	1.2
Women	55-64	1,090	13.4	0.0	\$38,717	3.7	1.2
Women	65-Up	259	3.2	0.0	\$18,352	3.4	1.1
Women	N/A	1	0.0	0.0	\$1,120	1.0	1.0
Women	Total	8,115	100.0	39.1	\$24,491	3.4	1.3
Men	00-19	537	6.1	0.0	\$4,094	2.6	1.4
Men	20-24	1,774	20.1	0.0	\$9,869	2.9	1.5
Men	25-34	2,247	25.5	0.0	\$25,695	3.3	1.3
Men	35-44	1,403	15.9	0.0	\$48,709	3.5	1.2
Men	45-54	1,370	15.5	0.0	\$57,398	3.6	1.1
Men	55-64	1,146	13.0	0.0	\$56,258	3.7	1.1
Men	65-Up	337	3.8	0.0	\$32,025	3.3	1.1
Men	N/A	1	0.0	0.0	\$1,335	1.0	1.0
Men	Total	8,815	100.0	42.4	\$33,997	3.3	1.3
N/A	N/A	3,849	100.0	0.0	\$14,872	2.6	1.3
N/A	Total	3,849	100.0	18.5	\$14,872	2.6	1.3
Total	00-19	1,108	5.3	0.0	\$3,848	2.6	1.4
Total	20-24	3,613	17.4	0.0	\$9,492	3.0	1.5
Total	25-34	4,092	19.7	0.0	\$24,696	3.3	1.3
Total	35-44	2,571	12.4	0.0	\$41,811	3.6	1.2
Total	45-54	2,712	13.1	0.0	\$47,601	3.7	1.2
Total	55-64	2,236	10.8	0.0	\$47,707	3.7	1.1
Total	65-Up	596	2.9	0.0	\$26,083	3.4	1.1
Total	N/A	3,851	18.5	0.0	\$14,865	2.6	1.3
Total	Total	20,779	100.0	100.0	\$26,742	3.2	1.3

Note: Persons worked at any time during the year.

County Determination: Based on county of employment in which the person made the most money in the year.

N/A: Represents persons with demographic data that is unavailable.

Wage Records in Wyoming: Employment and Earnings by Age and Gender with Place of Work in Albany County, 2000-2015

Average Earnings by Age and Gender with Place of Work in Albany County in 2010

Gender	Age Group	Number	Age Percent	Gender Percent	Average Annual Wage	Average Quarters Worked	Average Annual Employers
Women	00-19	507	6.3	0.0	\$3,752	2.5	1.4
Women	20-24	1,833	22.7	0.0	\$8,732	3.0	1.5
Women	25-34	1,895	23.5	0.0	\$24,231	3.4	1.4
Women	35-44	1,169	14.5	0.0	\$34,559	3.6	1.2
Women	45-54	1,300	16.1	0.0	\$38,747	3.7	1.2
Women	55-64	1,108	13.7	0.0	\$39,942	3.7	1.1
Women	65-Up	262	3.2	0.0	\$19,015	3.3	1.1
Women	Total	8,074	100.0	40.2	\$25,246	3.4	1.3
Men	00-19	469	5.4	0.0	\$4,121	2.6	1.4
Men	20-24	1,671	19.4	0.0	\$9,378	2.8	1.5
Men	25-34	2,338	27.1	0.0	\$25,969	3.3	1.3
Men	35-44	1,332	15.4	0.0	\$51,799	3.6	1.2
Men	45-54	1,279	14.8	0.0	\$59,211	3.7	1.2
Men	55-64	1,186	13.8	0.0	\$58,138	3.6	1.1
Men	65-Up	346	4.0	0.0	\$39,076	3.4	1.1
Men	N/A	1	0.0	0.0	\$5,490	1.0	1.0
Men	Total	8,622	100.0	43.0	\$35,435	3.3	1.3
N/A	N/A	3,370	100.0	0.0	\$15,829	2.7	1.3
N/A	Total	3,370	100.0	16.8	\$15,829	2.7	1.3
Total	00-19	976	4.9	0.0	\$3,929	2.5	1.4
Total	20-24	3,504	17.5	0.0	\$9,040	2.9	1.5
Total	25-34	4,233	21.1	0.0	\$25,191	3.3	1.4
Total	35-44	2,501	12.5	0.0	\$43,741	3.6	1.2
Total	45-54	2,579	12.9	0.0	\$48,895	3.7	1.2
Total	55-64	2,294	11.4	0.0	\$49,349	3.7	1.1
Total	65-Up	608	3.0	0.0	\$30,431	3.4	1.1
Total	N/A	3,371	16.8	0.0	\$15,826	2.7	1.3
Total	Total	20,066	100.0	100.0	\$28,042	3.2	1.3

Note: Persons worked at any time during the year.

County Determination: Based on county of employment in which the person made the most money in the year.

N/A: Represents persons with demographic data that is unavailable.

Wage Records in Wyoming: Employment and Earnings by Age and Gender with Place of Work in Albany County, 2000-2015

Average Earnings by Age and Gender with Place of Work in Albany County in 2011

Gender	Age Group	Number	Age Percent	Gender Percent	Average Annual Wage	Average Quarters Worked	Average Annual Employers
Women	00-19	484	5.9	0.0	\$3,931	2.5	1.5
Women	20-24	1,868	22.7	0.0	\$8,878	3.0	1.6
Women	25-34	1,984	24.1	0.0	\$23,637	3.4	1.4
Women	35-44	1,212	14.7	0.0	\$34,983	3.6	1.3
Women	45-54	1,246	15.1	0.0	\$39,030	3.7	1.2
Women	55-64	1,125	13.7	0.0	\$40,673	3.7	1.1
Women	65-Up	307	3.7	0.0	\$20,137	3.3	1.1
Women	Total	8,226	100.0	40.6	\$25,328	3.4	1.3
Men	00-19	495	5.7	0.0	\$3,760	2.4	1.4
Men	20-24	1,693	19.6	0.0	\$9,708	2.9	1.5
Men	25-34	2,285	26.4	0.0	\$26,934	3.3	1.3
Men	35-44	1,357	15.7	0.0	\$52,096	3.6	1.2
Men	45-54	1,259	14.5	0.0	\$62,225	3.7	1.1
Men	55-64	1,195	13.8	0.0	\$57,325	3.6	1.1
Men	65-Up	370	4.3	0.0	\$40,225	3.4	1.1
Men	N/A	2	0.0	0.0	\$4,118	1.5	1.0
Men	Total	8,656	100.0	42.7	\$36,076	3.3	1.3
N/A	N/A	3,373	100.0	0.0	\$16,143	2.7	1.3
N/A	Total	3,373	100.0	16.7	\$16,143	2.7	1.3
Total	00-19	979	4.8	0.0	\$3,845	2.5	1.4
Total	20-24	3,561	17.6	0.0	\$9,272	2.9	1.5
Total	25-34	4,269	21.1	0.0	\$25,402	3.3	1.4
Total	35-44	2,569	12.7	0.0	\$44,022	3.6	1.2
Total	45-54	2,505	12.4	0.0	\$50,688	3.7	1.2
Total	55-64	2,320	11.5	0.0	\$49,250	3.7	1.1
Total	65-Up	677	3.3	0.0	\$31,115	3.4	1.1
Total	N/A	3,375	16.7	0.0	\$16,135	2.7	1.3
Total	Total	20,255	100.0	100.0	\$28,392	3.2	1.3

Note: Persons worked at any time during the year.

County Determination: Based on county of employment in which the person made the most money in the year.

N/A: Represents persons with demographic data that is unavailable.

Wage Records in Wyoming: Employment and Earnings by Age and Gender with Place of Work in Albany County, 2000-2015

Average Earnings by Age and Gender with Place of Work in Albany County in 2012

Gender	Age Group	Number	Age Percent	Gender Percent	Average Annual Wage	Average Quarters Worked	Average Annual Employers
Women	00-19	499	6.0	0.0	\$4,038	2.6	1.5
Women	20-24	1,917	23.1	0.0	\$9,136	3.0	1.6
Women	25-34	1,975	23.8	0.0	\$23,970	3.3	1.4
Women	35-44	1,255	15.1	0.0	\$35,312	3.6	1.3
Women	45-54	1,182	14.2	0.0	\$40,507	3.7	1.2
Women	55-64	1,169	14.1	0.0	\$40,102	3.7	1.1
Women	65-Up	317	3.8	0.0	\$21,271	3.3	1.1
Women	Total	8,314	100.0	40.6	\$25,582	3.3	1.4
Men	00-19	483	5.5	0.0	\$3,573	2.4	1.3
Men	20-24	1,709	19.6	0.0	\$10,185	2.9	1.5
Men	25-34	2,297	26.3	0.0	\$27,554	3.3	1.3
Men	35-44	1,379	15.8	0.0	\$48,404	3.6	1.2
Men	45-54	1,280	14.7	0.0	\$63,045	3.7	1.2
Men	55-64	1,178	13.5	0.0	\$59,207	3.7	1.1
Men	65-Up	401	4.6	0.0	\$43,711	3.4	1.1
Men	N/A	4	0.0	0.0	\$5,192	1.5	1.3
Men	Total	8,731	100.0	42.6	\$36,326	3.3	1.3
N/A	N/A	3,450	100.0	0.0	\$16,049	2.7	1.3
N/A	Total	3,450	100.0	16.8	\$16,049	2.7	1.3
Total	00-19	982	4.8	0.0	\$3,809	2.5	1.4
Total	20-24	3,626	17.7	0.0	\$9,630	2.9	1.6
Total	25-34	4,272	20.8	0.0	\$25,897	3.3	1.4
Total	35-44	2,634	12.9	0.0	\$42,166	3.6	1.2
Total	45-54	2,462	12.0	0.0	\$52,224	3.7	1.2
Total	55-64	2,347	11.5	0.0	\$49,691	3.7	1.1
Total	65-Up	718	3.5	0.0	\$33,803	3.4	1.1
Total	N/A	3,454	16.9	0.0	\$16,036	2.7	1.3
Total	Total	20,495	100.0	100.0	\$28,554	3.2	1.3

Note: Persons worked at any time during the year.

County Determination: Based on county of employment in which the person made the most money in the year.

N/A: Represents persons with demographic data that is unavailable.

Wage Records in Wyoming: Employment and Earnings by Age and Gender with Place of Work in Albany County, 2000-2015

Average Earnings by Age and Gender with Place of Work in Albany County in 2013

Gender	Age Group	Number	Age Percent	Gender Percent	Average Annual Wage	Average Quarters Worked	Average Annual Employers
Women	00-19	489	5.9	0.0	\$3,782	2.6	1.5
Women	20-24	1,878	22.6	0.0	\$9,375	3.0	1.6
Women	25-34	1,993	24.0	0.0	\$24,104	3.3	1.4
Women	35-44	1,272	15.3	0.0	\$35,830	3.6	1.2
Women	45-54	1,189	14.3	0.0	\$39,276	3.6	1.3
Women	55-64	1,164	14.0	0.0	\$41,923	3.6	1.1
Women	65-Up	313	3.8	0.0	\$21,833	3.3	1.1
Women	N/A	1	0.0	0.0	\$11,774	4.0	1.0
Women	Total	8,299	100.0	39.8	\$25,957	3.3	1.4
Men	00-19	496	5.5	0.0	\$4,032	2.5	1.4
Men	20-24	1,769	19.8	0.0	\$10,100	2.9	1.5
Men	25-34	2,372	26.5	0.0	\$26,482	3.3	1.4
Men	35-44	1,430	16.0	0.0	\$48,120	3.5	1.2
Men	45-54	1,257	14.1	0.0	\$61,214	3.6	1.2
Men	55-64	1,186	13.3	0.0	\$60,756	3.7	1.1
Men	65-Up	426	4.8	0.0	\$45,633	3.4	1.1
Men	N/A	3	0.0	0.0	\$17,623	2.7	1.3
Men	Total	8,939	100.0	42.9	\$35,797	3.3	1.3
N/A	N/A	3,607	100.0	0.0	\$16,064	2.7	1.3
N/A	Total	3,607	100.0	17.3	\$16,064	2.7	1.3
Total	00-19	985	4.7	0.0	\$3,908	2.5	1.4
Total	20-24	3,647	17.5	0.0	\$9,727	2.9	1.6
Total	25-34	4,365	20.9	0.0	\$25,397	3.3	1.4
Total	35-44	2,702	13.0	0.0	\$42,334	3.5	1.2
Total	45-54	2,446	11.7	0.0	\$50,550	3.6	1.2
Total	55-64	2,350	11.3	0.0	\$51,427	3.6	1.1
Total	65-Up	739	3.5	0.0	\$35,553	3.4	1.1
Total	N/A	3,611	17.3	0.0	\$16,064	2.7	1.3
Total	Total	20,845	100.0	100.0	\$28,465	3.2	1.3

Note: Persons worked at any time during the year.

County Determination: Based on county of employment in which the person made the most money in the year.

N/A: Represents persons with demographic data that is unavailable.

Wage Records in Wyoming: Employment and Earnings by Age and Gender with Place of Work in Albany County, 2000-2015

Average Earnings by Age and Gender with Place of Work in Albany County in 2014

Gender	Age Group	Number	Age Percent	Gender Percent	Average Annual Wage	Average Quarters Worked	Average Annual Employers
Women	00-19	481	5.9	0.0	\$4,022	2.6	1.5
Women	20-24	1,743	21.5	0.0	\$10,222	3.0	1.6
Women	25-34	1,997	24.6	0.0	\$24,548	3.3	1.4
Women	35-44	1,292	15.9	0.0	\$36,924	3.6	1.3
Women	45-54	1,145	14.1	0.0	\$40,738	3.6	1.3
Women	55-64	1,148	14.1	0.0	\$42,477	3.6	1.1
Women	65-Up	316	3.9	0.0	\$24,834	3.4	1.1
Women	N/A	1	0.0	0.0	\$1,328	3.0	1.0
Women	Total	8,123	100.0	39.4	\$27,051	3.3	1.4
Men	00-19	467	5.3	0.0	\$4,356	2.5	1.5
Men	20-24	1,591	18.2	0.0	\$11,179	3.0	1.6
Men	25-34	2,388	27.3	0.0	\$27,235	3.3	1.4
Men	35-44	1,446	16.6	0.0	\$49,744	3.5	1.2
Men	45-54	1,225	14.0	0.0	\$61,710	3.6	1.2
Men	55-64	1,173	13.4	0.0	\$61,069	3.6	1.1
Men	65-Up	444	5.1	0.0	\$47,716	3.4	1.1
Men	N/A	3	0.0	0.0	\$24,907	3.7	1.3
Men	Total	8,737	100.0	42.3	\$37,230	3.3	1.3
N/A	N/A	3,782	100.0	0.0	\$16,418	2.6	1.3
N/A	Total	3,782	100.0	18.3	\$16,418	2.6	1.3
Total	00-19	948	4.6	0.0	\$4,187	2.5	1.5
Total	20-24	3,334	16.2	0.0	\$10,678	3.0	1.6
Total	25-34	4,385	21.2	0.0	\$26,011	3.3	1.4
Total	35-44	2,738	13.3	0.0	\$43,695	3.5	1.3
Total	45-54	2,370	11.5	0.0	\$51,578	3.6	1.2
Total	55-64	2,321	11.2	0.0	\$51,873	3.6	1.1
Total	65-Up	760	3.7	0.0	\$38,202	3.4	1.1
Total	N/A	3,786	18.3	0.0	\$16,420	2.6	1.3
Total	Total	20,642	100.0	100.0	\$29,411	3.2	1.3

Note: Persons worked at any time during the year.

County Determination: Based on county of employment in which the person made the most money in the year.

N/A: Represents persons with demographic data that is unavailable.

Wage Records in Wyoming: Employment and Earnings by Age and Gender with Place of Work in Albany County, 2000-2015

Average Earnings by Age and Gender with Place of Work in Albany County in 2015

Gender	Age Group	Number	Age Percent	Gender Percent	Average Annual Wage	Average Quarters Worked	Average Annual Employers
Women	00-19	419	5.2	0.0	\$4,561	2.7	1.6
Women	20-24	1,677	20.8	0.0	\$10,538	3.0	1.6
Women	25-34	2,054	25.4	0.0	\$25,868	3.4	1.4
Women	35-44	1,324	16.4	0.0	\$38,310	3.6	1.3
Women	45-54	1,084	13.4	0.0	\$43,924	3.7	1.3
Women	55-64	1,157	14.3	0.0	\$43,772	3.6	1.2
Women	65-Up	356	4.4	0.0	\$26,221	3.4	1.1
Women	Total	8,071	100.0	38.9	\$28,625	3.4	1.4
Men	00-19	465	5.4	0.0	\$5,047	2.6	1.5
Men	20-24	1,554	17.9	0.0	\$11,864	3.0	1.6
Men	25-34	2,407	27.8	0.0	\$27,956	3.3	1.4
Men	35-44	1,472	17.0	0.0	\$52,340	3.5	1.3
Men	45-54	1,187	13.7	0.0	\$64,042	3.6	1.2
Men	55-64	1,135	13.1	0.0	\$62,553	3.6	1.1
Men	65-Up	451	5.2	0.0	\$44,873	3.4	1.1
Men	N/A	2	0.0	0.0	\$27,811	3.0	1.5
Men	Total	8,673	100.0	41.8	\$38,329	3.3	1.3
N/A	N/A	4,023	100.0	0.0	\$17,302	2.6	1.3
N/A	Total	4,023	100.0	19.4	\$17,302	2.6	1.3
Total	00-19	884	4.3	0.0	\$4,817	2.7	1.5
Total	20-24	3,231	15.6	0.0	\$11,175	3.0	1.6
Total	25-34	4,461	21.5	0.0	\$26,995	3.3	1.4
Total	35-44	2,796	13.5	0.0	\$45,696	3.6	1.3
Total	45-54	2,271	10.9	0.0	\$54,439	3.7	1.2
Total	55-64	2,292	11.0	0.0	\$53,073	3.6	1.2
Total	65-Up	807	3.9	0.0	\$36,645	3.4	1.1
Total	N/A	4,025	19.4	0.0	\$17,307	2.6	1.3
Total	Total	20,767	100.0	100.0	\$30,484	3.2	1.3

Note: Persons worked at any time during the year.

County Determination: Based on county of employment in which the person made the most money in the year.

N/A: Represents persons with demographic data that is unavailable.