

Wyoming Unemployment Insurance Claims Report

July 2025

**Information for Wyoming by Industry and
County of Residence of Claimant**

Research & Planning, Wyoming Department of Workforce Services

Published August 25, 2025



Wyoming Unemployment Insurance Claims Report, July 2025

Information for Wyoming by Industry and County of Residence of Claimant

Wyoming Department of Workforce Services
Elizabeth Gagen, Director

Research & Planning
Tony Glover, Manager
Carola Cowan, Bureau of Labor Statistics Programs Supervisor
Michael Moore, Research Supervisor

Prepared by:
Jaime Cruz, Multimedia Specialist
Michael Moore, Research Supervisor

Editorial Committee:
David Bullard, Jaime Cruz, Matthew Halama, Lisa Knapp, Chris McGrath, Michael Moore, and Laura Yetter

Published August 25, 2025.
©2025 by the Wyoming Department of Workforce Services, Research & Planning

Department of Workforce Services Nondiscrimination Statement

The Department of Workforce Services does not discriminate on the basis of race, color, religion, national origin, sex, age, or disability. It is our intention that all individuals seeking services from our agency be given equal opportunity and that eligibility decisions be based upon applicable statutes, rules, and regulations.

Research & Planning
P.O. Box 2760
Casper, WY 82602
Phone: (307) 473-3807
Fax: (307) 473-3834

R&P Website: <https://doe.state.wy.us/LMI/>
Unemployment Insurance Claims Data: <https://doe.state.wy.us/LMI/ui.htm>
URL for this report: https://doe.state.wy.us/LMI/UI/0725_UI.pdf

“Your Source for Wyoming Labor Market Information”

Who We Are

Research & Planning (R&P) functions as an exclusively statistical entity within the Wyoming Department of Workforce Services. R&P collects, analyzes, and publishes timely and accurate labor market information (LMI) meeting established statistical standards. We work to make the labor market more efficient by providing the public and the public’s representatives with the information needed for evidence-based, informed decision making.



Wyoming Unemployment Insurance Claims Report, July 2025

UI Claims in Construction Increase After Job Growth

by: Michael Moore, Research Supervisor

Initial and continued Unemployment Insurance (UI) claims in Wyoming (see Definitions, page 9) continued to increase from prior year levels, but still remained relatively low compared to past years.

Initial and continued claims in construction increased substantially in the last few months. As noted by Moore (2025a), construction has driven Wyoming's job growth since 2023. This period of added jobs is represented by the tan bars in Figure 1, while initial and continued UI claims are represented by the red and blue

lines, respectively. Given the temporary and seasonal nature of construction jobs, it is not surprising to see a substantial increase in UI claims following an extensive period of job growth in construction.

Initial Claims

There were 1,098 initial claims in July 2025, up from 956 in July 2024 (142, or 14.9%). Over the month, initial claims followed their normal seasonal trend and declined as Wyoming added more summer jobs.

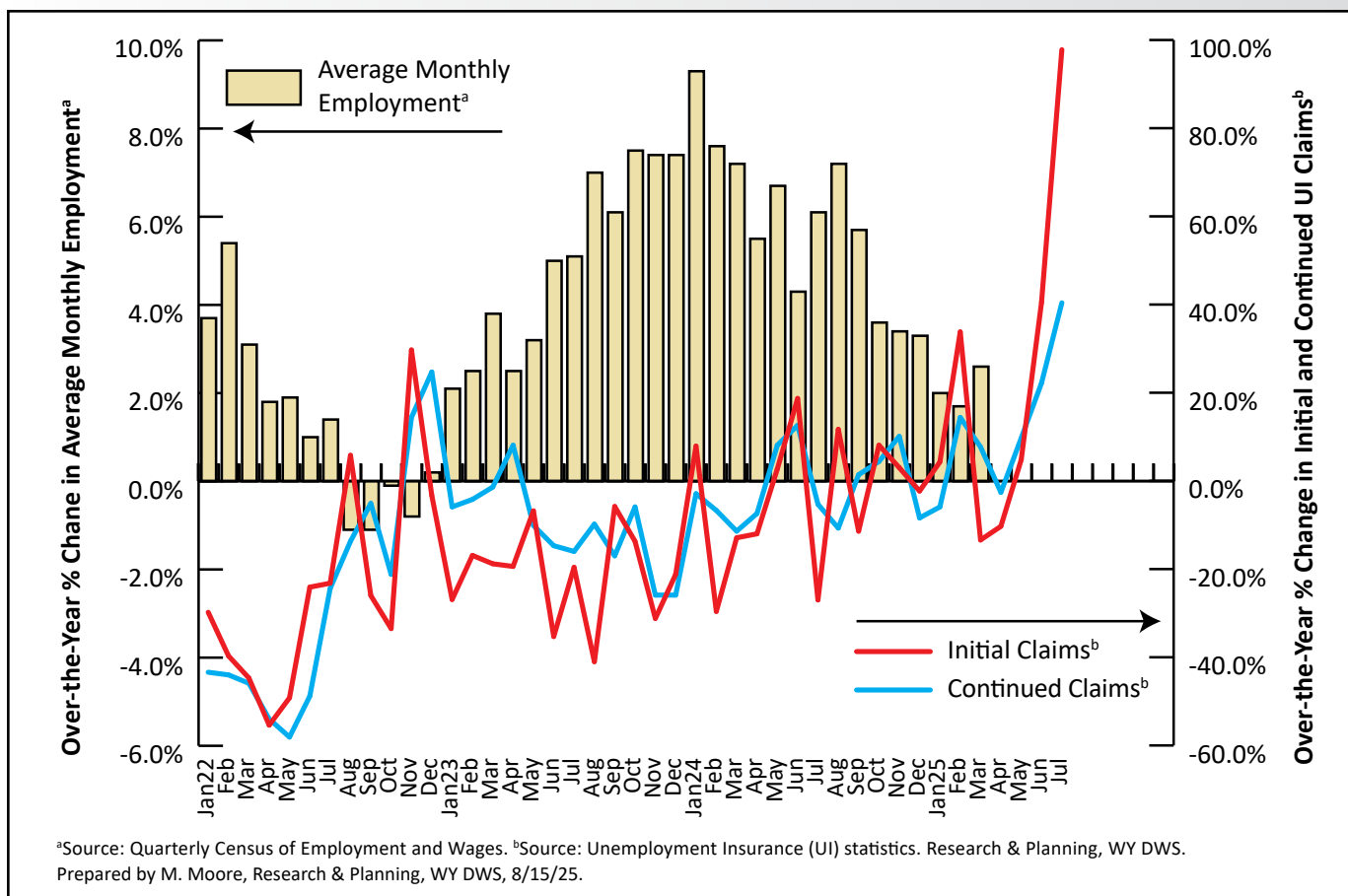


Figure 1: Over-the-Year Percent Increase in Initial and Continued Unemployment Insurance Claims for Construction in Wyoming, January 2022 to July 2025, and Average Monthly Employment in Construction in Wyoming, January 2022 to March 2025

The number of initial claims in construction nearly doubled from July 2024 to July 2025 (135, or 97.8%; see Table 1, page 5, and Figure 3, page 6). Over-the-year increases also were seen in education & health services (21, or 21.9%) and natural resources & mining (18, or 22.8%).

The number of initial claims for out-of-state individuals increased from 129 to 176 over the year (47, or 36.4%; see Figure 4, page 6, and Table 3, page 9). Initial claims in Natrona County increased from 141 to 169 (28, or 19.9%).

Continued Claims

The total number of continued weeks claimed increased from 6,916 in July 2024 to 8,066 in July 2025 (1,150, or 16.6%). The total number of unique claimants increased over the year from 2,007 to 2,272 (265, or 13.2%).

Several industries saw over-the-year increases in continued claims, led by construction (459, or 40.4%). Other industries with notable increases in continued weeks claimed included professional & business services (152, or 18.5%); trade, transportation

& utilities (145, or 12.8%); and manufacturing (139, or 47.4%; see Table 2, page 7, and Figure 5, page 8).

The total number of continued weeks claimed for out-of-state workers increased from 929 to 1,411 (482, or 51.9%; see Figure 6, page 8, and Table 4, page 9). This is consistent with the increase in claims in construction, as out-of-state workers often make up as much as one-third of all persons working in construction (Moore, 2025b). Large over-the-year increases also were seen in Sweetwater (185, or 36.5%) and Uinta (112, or 62.2%) counties (see Figure 2).

References

- Moore, M. (2025a, July). 2024Q4 quarterly update: Construction continues to drive Wyoming job growth. *Wyoming Labor Force Trends*, 62(7). Research & Planning, Wyoming DWS. Retrieved August 15, 2025, from <https://tinyurl.com/bdzekd75>
- Moore, M. (2025b, June). Selected demographics of the Wyoming workforce, 2024: Construction. Research & Planning, Wyoming DWS. Retrieved August 15, 2025, from <https://tinyurl.com/8pzbupyz>

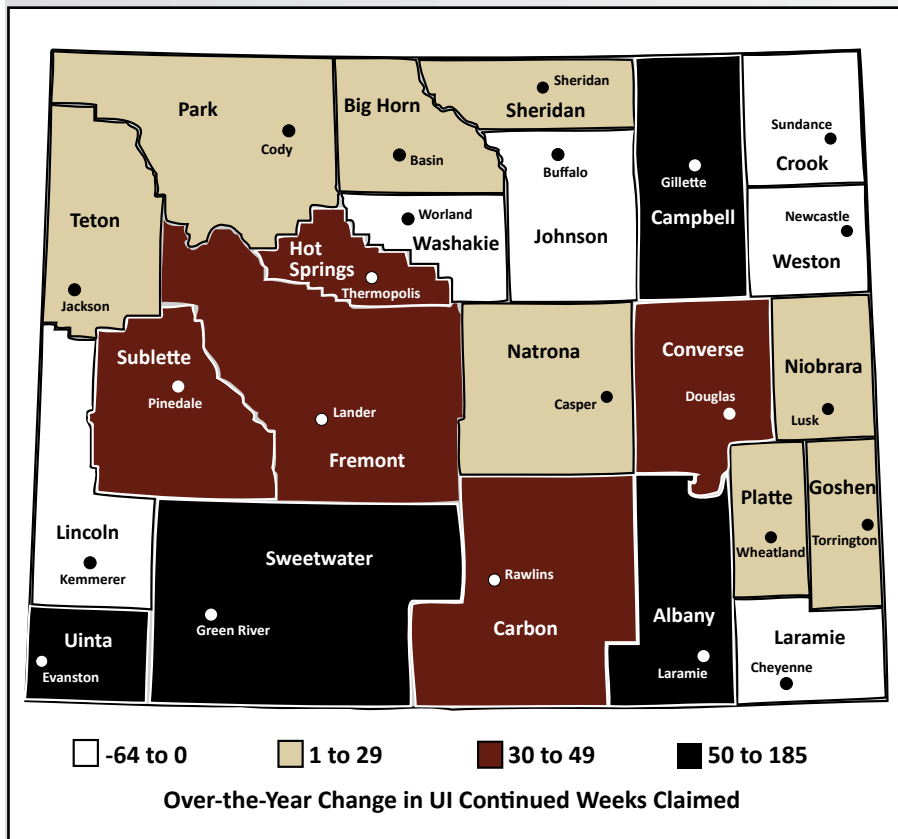


Figure 2: Increase in the Number of Unemployment Insurance Continued Weeks Claimed, July 2024-July 2025

Table 1: Initial Unemployment Insurance Claims in Wyoming, July 2025

Industry	Initial Claims Filed			Over-the-Month Change		Over-the-Year Change	
	Jul 2025	Jun 2025	Jul 2024	N	%	N	%
Total Claims Filed	1,098	1,209	956	-111	-9.2	142	14.9
Goods-Producing	423	462	269	-39	-8.4	154	57.2
Natural Resources & Mining (11, 21)	97	85	79	12	14.1	18	22.8
Mining (21)	96	77	74	19	24.7	22	29.7
Construction (23)	273	312	138	-39	-12.5	135	97.8
Manufacturing (31-33)	51	63	51	-12	-19.0	0	0.0
Service-Providing	580	651	590	-71	-10.9	-10	-1.7
Trade, Transportation, & Utilities (22, 42, 44-45, 48-49)	168	173	190	-5	-2.9	-22	-11.6
Wholesale Trade (42)	29	31	32	-2	-6.5	-3	-9.4
Retail Trade (44-45)	93	79	109	14	17.7	-16	-14.7
Transportation, Warehousing & Utilities (22, 44-49)	45	62	49	-17	-27.4	-4	-8.2
Information (51)	12	11	12	1	9.1	0	0.0
Financial Activities (52-53)	30	25	29	5	20.0	1	3.4
Professional & Business Services (54-56)	122	103	125	19	18.4	-3	-2.4
Education & Health Services (61-62)	117	182	96	-65	-35.7	21	21.9
Leisure & Hospitality (71-72)	97	112	105	-15	-13.4	-8	-7.6
Other Services, except Public Admin. (81)	30	41	30	-11	-26.8	0	0.0
Government	72	75	79	-3	-4.0	-7	-8.9
Federal Government	12	14	9	-2	-14.3	3	33.3
State Government	8	3	9	5	166.7	-1	-11.1
Local Government	51	58	60	-7	-12.1	-9	-15.0
Local Education	19	27	12	-8	-29.6	7	58.3
Unclassified	22	19	16	3	15.8	6	37.5
Laramie County							
Total Claims Filed	178	171	164	7	4.1	14	8.5
Goods-Producing	48	55	24	-7	-12.7	24	100.0
Construction	40	44	12	-4	-9.1	28	233.3
Service-Providing	116	100	122	16	16.0	-6	-4.9
Trade, Transportation, & Utilities (22,42,44-45,48-49)	33	29	36	4	13.8	-3	-8.3
Financial Activities (52, 53)	6	9	2	-3	-33.3	4	200.0
Professional & Business Services (54 - 56)	32	22	48	10	45.5	-16	-33.3
Educational & Health Services (61-62)	24	16	16	8	50.0	8	50.0
Leisure & Hospitality (71-72)	11	16	12	-5	-31.3	-1	-8.3
Government	11	6	15	5	83.3	-4	-26.7
Natrona County							
Total Claims Filed	169	156	141	13	8.3	28	19.9
Goods-Producing	53	46	32	7	15.2	21	65.6
Construction	31	33	14	-2	-6.1	17	121.4
Service-Providing	106	106	101	0	0.0	5	5.0
Trade, Transportation, & Utilities (22,42,44-45,48-49)	39	27	33	12	44.4	6	18.2
Financial Activities (52, 53)	4	5	10	-1	-20.0	-6	-60.0
Professional & Business Services (54 - 56)	20	12	11	8	66.7	9	81.8
Educational & Health Services (61-62)	13	27	17	-14	-51.9	-4	-23.5
Leisure & Hospitality (71-72)	15	20	21	-5	-25.0	-6	-28.6
Government	5	3	3	2	66.7	2	66.7

N/D = Not discloseable due to confidentiality.

Source: Unemployment Insurance claims database.

Prepared by J. Cruz, Research & Planning, WY DWS, 8/14/25.

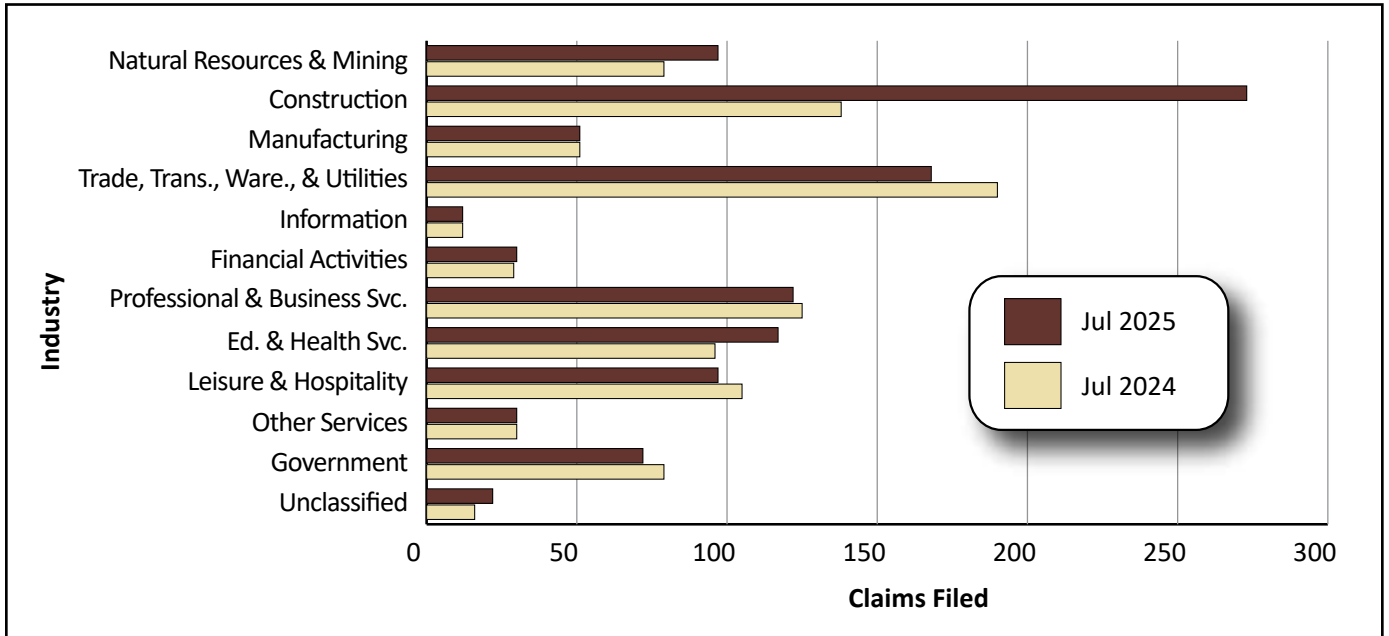


Figure 3: Initial Unemployment Insurance Claims by Major Industry in Wyoming, July 2024 and July 2025

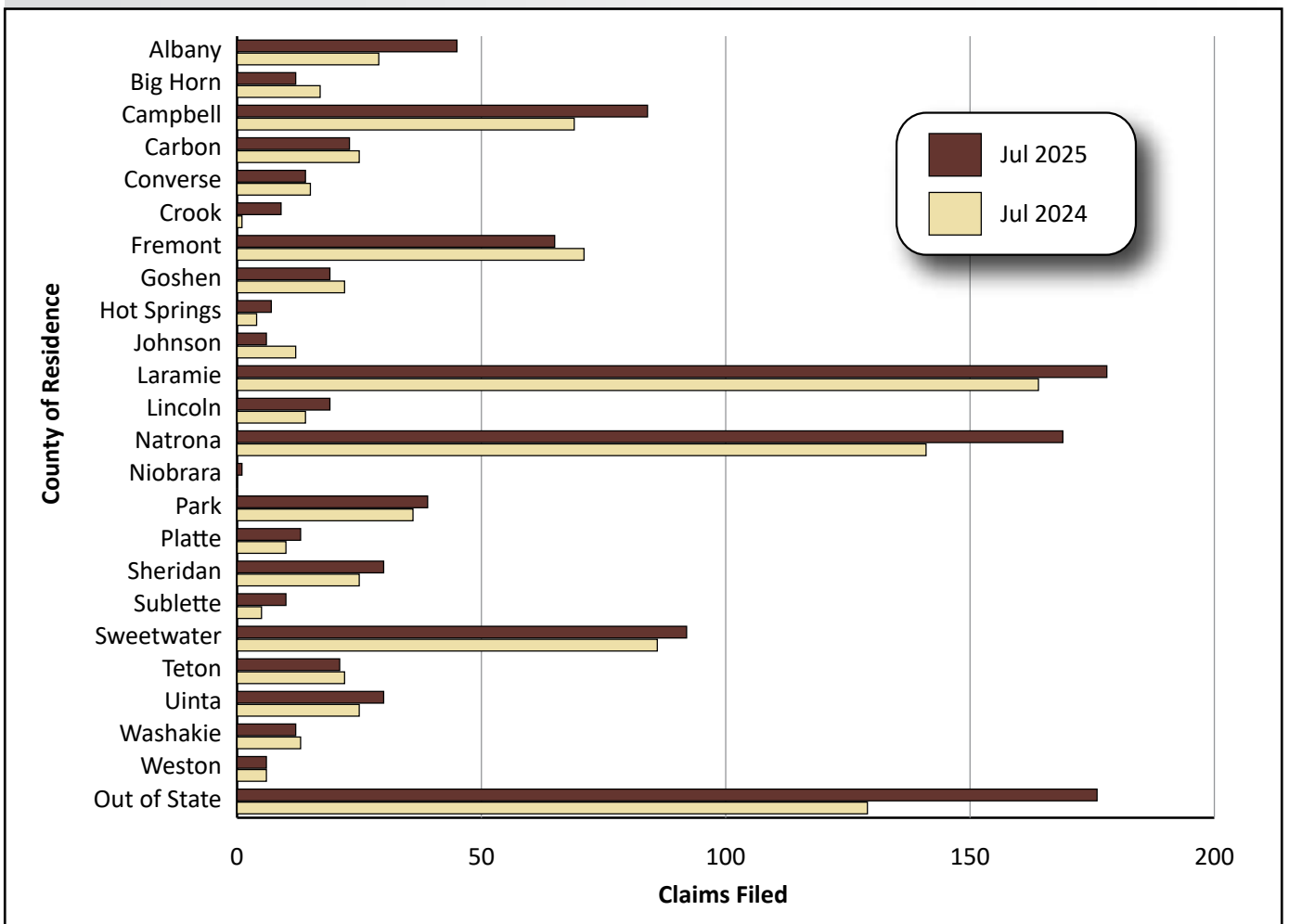


Figure 4: Initial Unemployment Insurance Claims by County of Residence, July 2024 and July 2025

Table 2: Unemployment Insurance Continued Weeks Claimed in Wyoming, July 2025

Industry	Continued Weeks Claimed			Over-the-Month Change		Over-the-Year Change	
	Jul 2025	Jun 2025	Jul 2024	N	%	N	%
Total Continued Weeks Claimed	8,066	8,128	6,916	-62	-0.8	1,150	16.6
Total Unique Claimants	2,272	2,864	2,007	-592	-20.7	265	13.2
Goods-Producing	2,682	2,675	2,142	7	0.3	540	25.2
Natural Resources & Mining (11, 21)	652	661	710	-9	-1.4	-58	-8.2
Mining (21)	636	624	666	12	1.9	-30	-4.5
Oil & Gas Extraction (211)	34	34	57	0	0.0	-23	-40.4
Construction (23)	1,596	1,557	1,137	39	2.5	459	40.4
Manufacturing (31-33)	432	456	293	-24	-5.3	139	47.4
Service-Providing	4,759	4,904	4,200	-145	-3.0	559	13.3
Trade, Transportation, & Utilities (22, 42, 44-45, 48-49)	1,275	1,388	1,130	-113	-8.1	145	12.8
Wholesale Trade (42)	254	276	196	-22	-8.0	58	29.6
Retail Trade (44-45)	609	676	647	-67	-9.9	-38	-5.9
Transportation, Warehousing & Utilities (22, 44-49)	411	436	286	-25	-5.7	125	43.7
Information (51)	93	107	100	-14	-13.1	-7	-7.0
Financial Activities (52-53)	316	326	239	-10	-3.1	77	32.2
Professional & Business Services (54-56)	973	950	821	23	2.4	152	18.5
Education & Health Services (61-62)	1,110	1,012	1,041	98	9.7	69	6.6
Leisure & Hospitality (71-72)	792	915	690	-123	-13.4	102	14.8
Other Services, except Public Admin. (81)	197	203	176	-6	-3.0	21	11.9
Government	536	448	499	88	19.6	37	7.4
Federal Government	54	43	51	11	25.6	3	5.9
State Government	55	56	70	-1	-1.8	-15	-21.4
Local Government	426	348	378	78	22.4	48	12.7
Local Education	122	74	90	48	64.9	32	35.6
Unclassified	89	99	73	-10	-10.1	16	21.9
Laramie County							
Total Claims Filed	1,085	1,092	1,149	-7	-0.6	-64	-5.6
Total Unique Claimants	323	397	328	-74	-18.6	-5	-1.5
Goods-Producing	183	227	226	-44	-19.4	-43	-19.0
Construction	146	177	160	-31	-17.5	-14	-8.8
Service-Providing	793	777	812	16	2.1	-19	-2.3
Trade, Transportation, & Utilities (22,42,44-45,48-49)	215	234	235	-19	-8.1	-20	-8.5
Financial Activities (52, 53)	89	90	51	-1	-1.1	38	74.5
Professional & Business Services (54 - 56)	206	180	253	26	14.4	-47	-18.6
Educational & Health Services (61 - 62)	131	130	120	1	0.8	11	9.2
Leisure & Hospitality (71 - 72)	100	95	90	5	5.3	10	11.1
Government	75	51	78	24	47.1	-3	-3.8
Unclassified	32	35	32	-3	-8.6	0	0.0
Natrona County							
Total Claims Filed	1,090	1,155	1,073	-65	-5.6	17	1.6
Total Unique Claimants	312	402	313	-90	-22.4	-1	-0.3
Goods-Producing	289	352	301	-63	-17.9	-12	-4.0
Construction	123	143	100	-20	-14.0	23	23.0
Service-Providing	773	769	721	4	0.5	52	7.2
Trade, Transportation, & Utilities (22,42,44-45,48-49)	260	280	204	-20	-7.1	56	27.5
Financial Activities (52, 53)	49	47	65	2	4.3	-16	-24.6
Professional & Business Services (54 - 56)	126	114	94	12	10.5	32	34.0
Educational & Health Services (61 - 62)	168	164	229	4	2.4	-61	-26.6
Leisure & Hospitality (71 - 72)	111	111	81	0	0.0	30	37.0
Government	18	22	50	-4	-18.2	-32	-64.0
Unclassified	9	9	0	0	0.0	9	N/A

Source: Unemployment Insurance claims database.
 Prepared by J. Cruz, Research & Planning, WY DWS, 8/14/25.

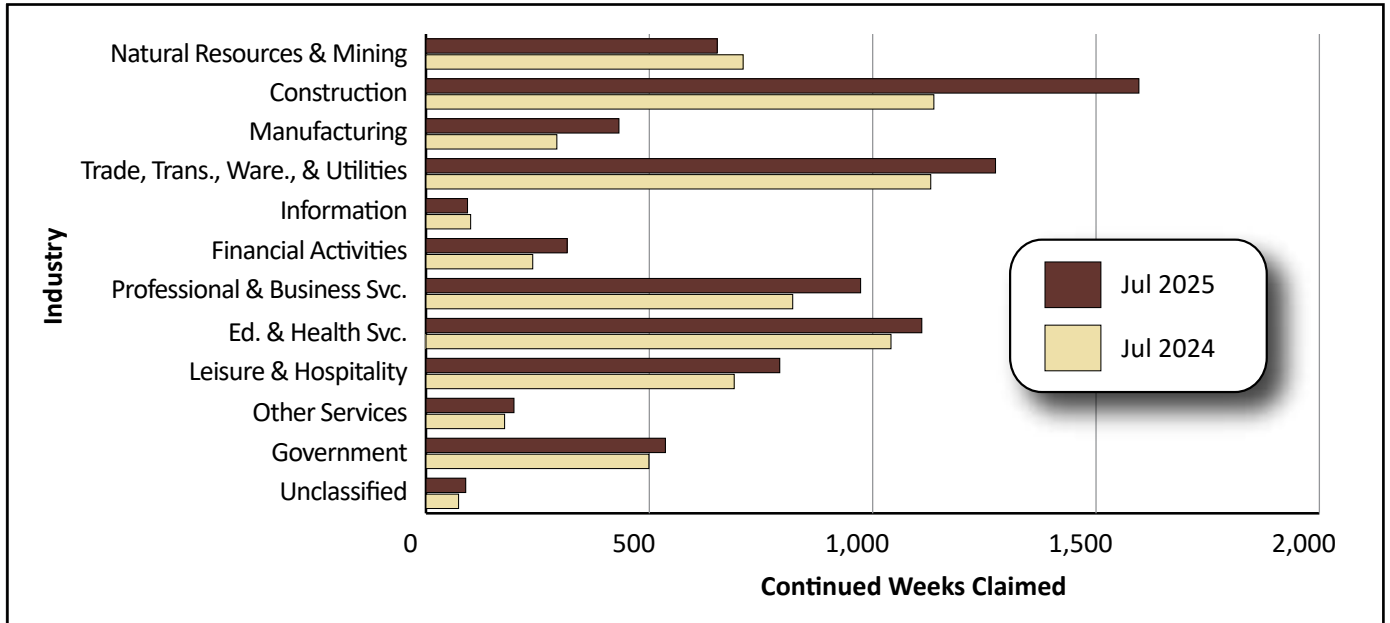


Figure 5: Continued Unemployment Insurance Claims by Major Industry in Wyoming, July 2024 and July 2025

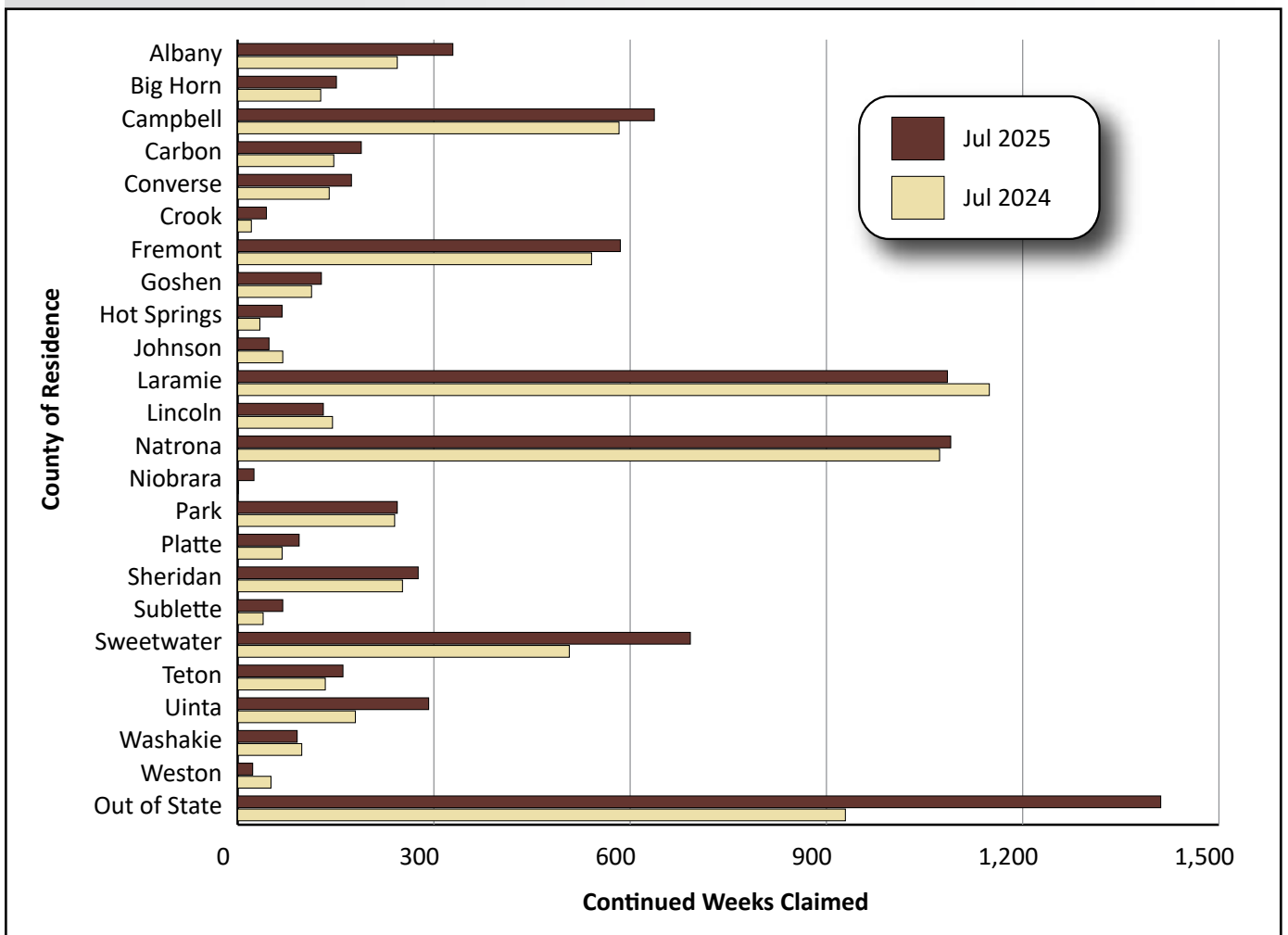


Figure 6: Continued Unemployment Insurance Claims by County of Residence in Wyoming, July 2024 and July 2025

Table 3: Initial Unemployment Insurance Claims for Wyoming by County of Residence, July 2024 and July 2025

County	July 2025	July 2024	Change	
			N	%
Albany	45	29	16	55.2
Big Horn	12	17	-5	-29.4
Campbell	84	69	15	21.7
Carbon	23	25	-2	-8.0
Converse	14	15	-1	-6.7
Crook	N/D	N/D	N/D	N/D
Fremont	65	71	-6	-8.5
Goshen	19	22	-3	-13.6
Hot Springs	7	4	3	75.0
Johnson	6	12	-6	-50.0
Laramie	178	164	14	8.5
Lincoln	19	14	5	35.7
Natrona	169	141	28	19.9
Niobrara	N/D	N/D	N/D	N/D
Park	39	36	3	8.3
Platte	13	10	3	30.0
Sheridan	30	25	5	20.0
Sublette	10	5	5	100.0
Sweetwater	92	86	6	7.0
Teton	21	22	-1	-4.5
Uinta	30	25	5	20.0
Washakie	12	13	-1	-7.7
Weston	6	6	0	0.0
Unknown	4	3	1	33.3
Out of State	176	129	47	36.4
Total	1,098	956	142	14.9

N/D = not discloseable due to confidentiality.

Source: Unemployment Insurance claims database.

Prepared by J. Cruz, Research & Planning, WY DWS, 8/14/25.

Box: Definitions

Initial Claim: An initial claim is filed by an unemployed individual after a separation from an employer. The claim requests a determination of basic eligibility for the Unemployment Insurance benefits.

Continued Weeks Claimed: The number of weeks of UI benefits claimed during the reference period. An unemployed individual who has already filed an initial claim and who has experienced a week of unemployment and then filed a continued claim to claim benefits for that week of unemployment.

Table 4: Wyoming Normalized^a Unemployment Statistics: Continued Claims by County of Residence, July 2024 and July 2025

County	July 2025	July 2024	Change	
			N	%
Albany	329	244	85	34.8
Big Horn	151	127	24	18.9
Campbell	637	583	54	9.3
Carbon	189	147	42	28.6
Converse	174	140	34	24.3
Crook	44	N/D	N/D	N/D
Fremont	585	541	44	8.1
Goshen	128	113	15	13.3
Hot Springs	68	34	34	100.0
Johnson	48	69	-21	-30.4
Laramie	1,085	1,149	-64	-5.6
Lincoln	131	145	-14	-9.7
Natrona	1,090	1,073	17	1.6
Niobrara	25	N/D	N/D	N/D
Park	244	240	4	1.7
Platte	94	68	26	38.2
Sheridan	276	252	24	9.5
Sublette	69	39	30	76.9
Sweetwater	692	507	185	36.5
Teton	161	134	27	20.1
Uinta	292	180	112	62.2
Washakie	91	98	-7	-7.1
Weston	23	51	-28	-54.9
Unknown	19	19	0	0.0
Out of State	1,411	929	482	51.9
Normalized Total^a	8,066	6,916	1,150	16.6

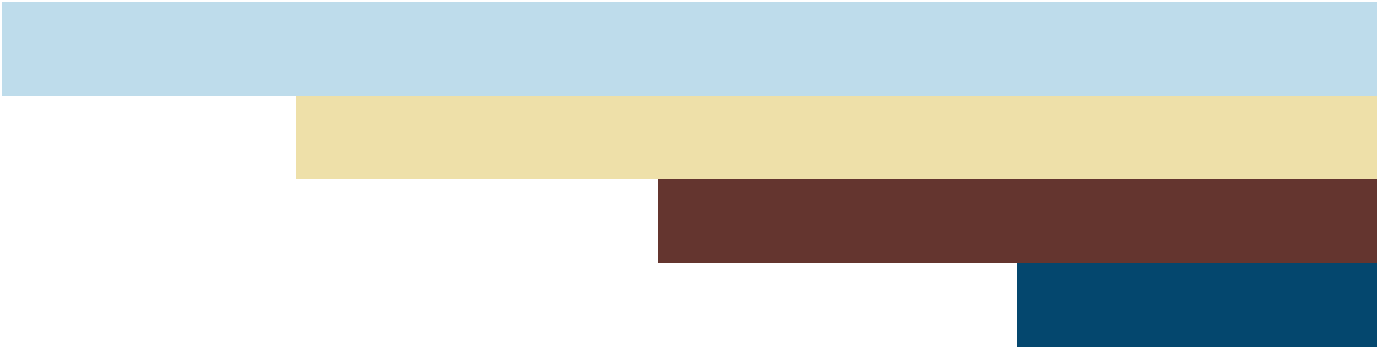
^aAn average month is considered 4.33 weeks. If a month has four weeks, the normalization factor is 1.0825. If the month has five weeks, the normalization factor is 0.866. The number of raw claims is multiplied by the normalization factor to achieve the normalized claims counts.

All totals are subject to rounding error and may not add to the sum of their respective components.

The table above conforms to Wyoming Employment Security Law - Wyoming Statute 27-3-603 regarding confidentiality.

Source: Unemployment Insurance claims database.

Prepared by J. Cruz, Research & Planning, WY DWS, 8/14/25.



This publication was produced by the Research & Planning section of the Wyoming Department of Workforce Services.

**Research & Planning
P.O. Box 2760
Casper, WY 82602
Phone: (307) 473-3807
Fax: (307) 473-3834
Website: <https://doe.state.wy.us/LMI>
Email: dws-researchplanning@wyo.gov**

Material contained in this publication is in the public domain and may be reproduced without special permission provided that source credit is given to: **Unemployment Insurance Monthly Claims Report, July 2025**, Wyoming Department of Workforce Services, Research & Planning.

This workforce product was funded by a grant awarded by the U.S. Department of Labor's Employment and Training Administration. The product was created by the recipient and does not necessarily reflect the official position of the U.S. Department of Labor. The U.S. Department of Labor makes no guarantees, warranties, or assurances of any kind, express or implied, with respect to such information, including any information on linked sites and including, but not limited to, accuracy of the information or its completeness, timeliness, usefulness, adequacy, continued availability, or ownership. This product is copyrighted by the institution that created it. Internal use by an organization and/or personal use by an individual for non-commercial purposes is permissible. All other uses require the prior authorization of the copyright owner.