

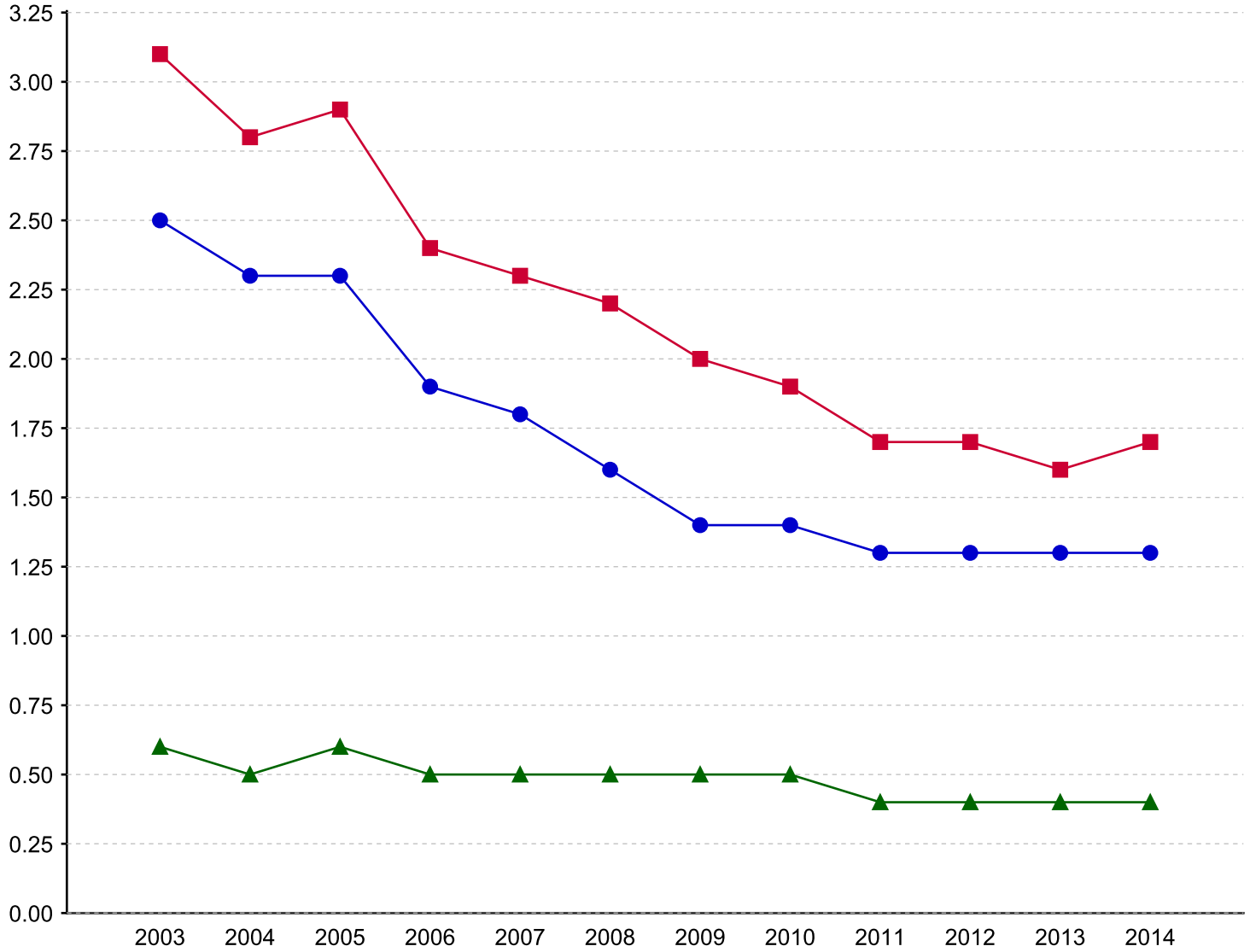
Nonfatal occupational injury and illness incidence rates by case type, Wyoming, private industry, 2003-2014

Year	Cases with days away from work, job transfer, or restriction	Cases with days away from work	Cases with job transfer, or restriction
2003	3.1	2.5	0.6
2004	2.8	2.3	0.5
2005	2.9	2.3	0.6
2006	2.4	1.9	0.5
2007	2.3	1.8	0.5
2008	2.2	1.6	0.5
2009	2.0	1.4	0.5
2010	1.9	1.4	0.5
2011	1.7	1.3	0.4
2012	1.7	1.3	0.4
2013	1.6	1.3	0.4
2014	1.7	1.3	0.4

Figure 6A

Nonfatal occupational injury and illness incidence rates by case type, Wyoming, private industry, 2003-2014

[SOURCE : U.S. Bureau of Labor Statistics, U.S. Department of Labor, 2015]



■ Cases with days away from work, job transfer, or restriction    ● Cases with days away from work  
▲ Cases with days of job transfer, or restriction

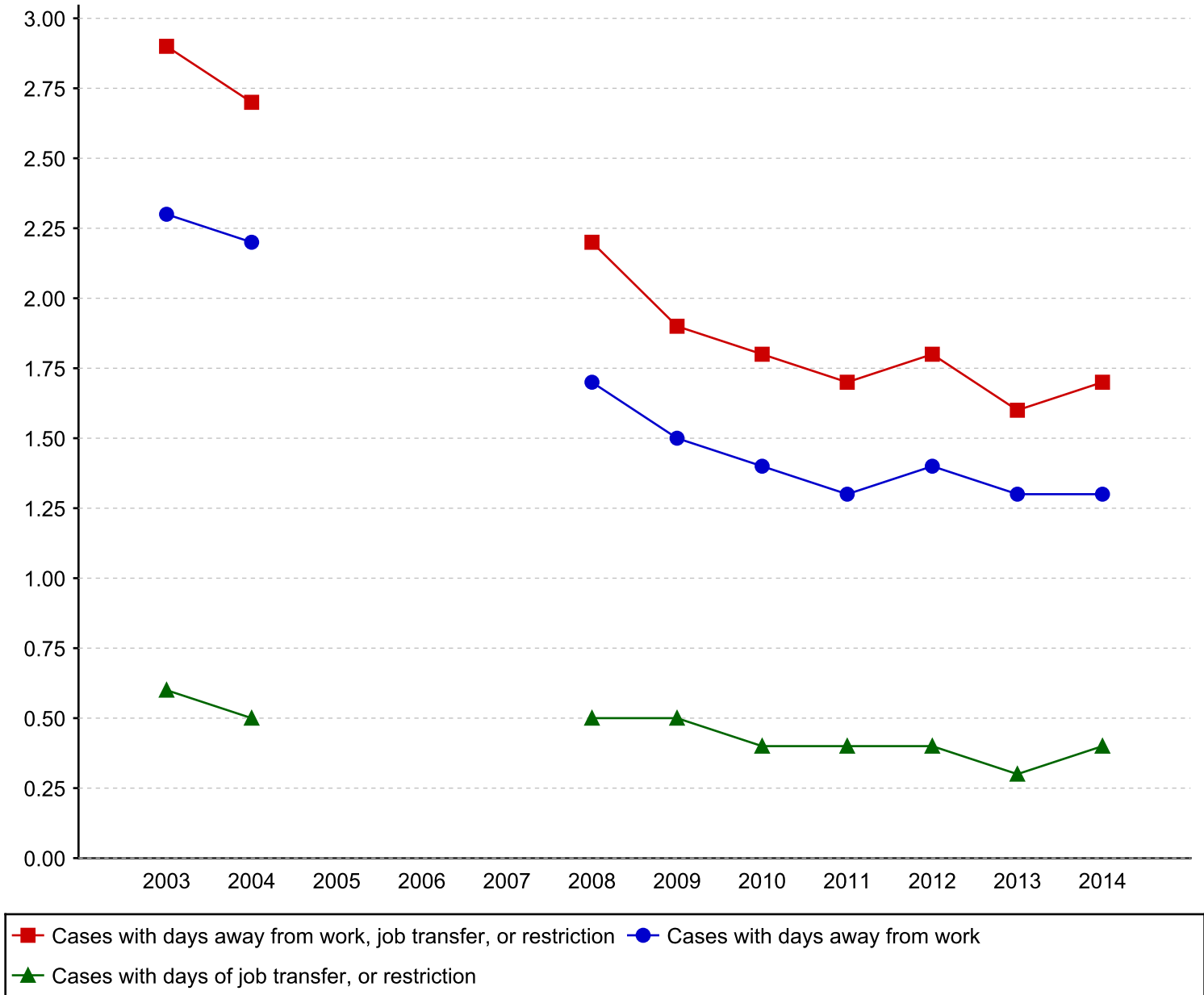
Nonfatal occupational injury and illness incidence rates by case type, Wyoming, all ownerships, 2003-2014

Year	Cases with days away from work, job transfer, or restriction	Cases with days away from work	Cases with job transfer, or restriction
2003	2.9	2.3	0.6
2004	2.7	2.2	0.5
2005	-	-	-
2006	-	-	-
2007	-	-	-
2008	2.2	1.7	0.5
2009	1.9	1.5	0.5
2010	1.8	1.4	0.4
2011	1.7	1.3	0.4
2012	1.8	1.4	0.4
2013	1.6	1.3	0.3
2014	1.7	1.3	0.4

Figure 6B

Nonfatal occupational injury and illness incidence rates by case type, Wyoming, all ownerships, 2003-2014

[SOURCE : U.S. Bureau of Labor Statistics, U.S. Department of Labor, 2015]

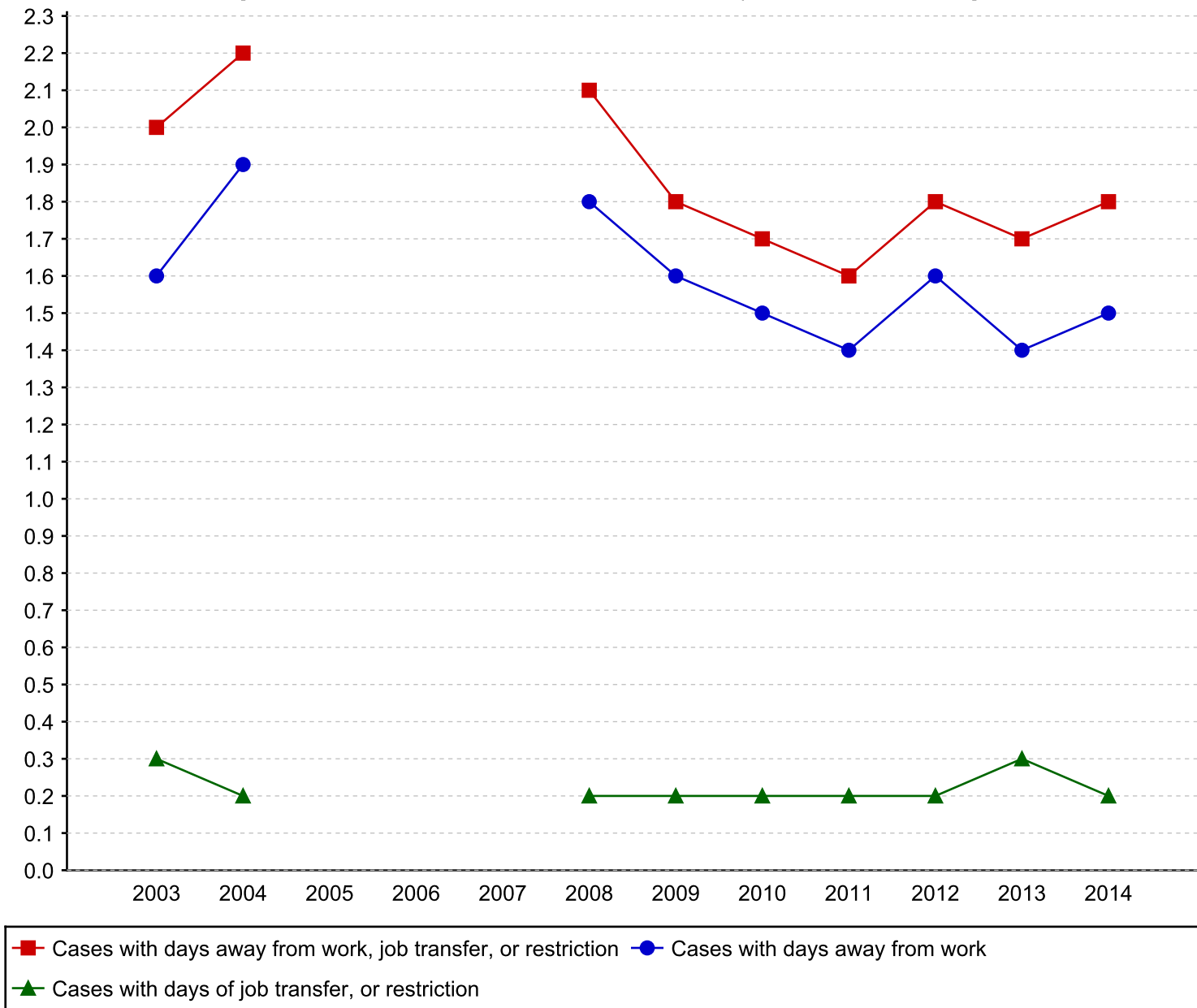


Nonfatal occupational injury and illness incidence rates by case type, Wyoming, state and local government, 2003-2014

Year	Cases with days away from work, job transfer, or restriction	Cases with days away from work	Cases with job transfer, or restriction
2003	2.0	1.6	0.3
2004	2.2	1.9	0.2
2005	-	-	-
2006	-	-	-
2007	-	-	-
2008	2.1	1.8	0.2
2009	1.8	1.6	0.2
2010	1.7	1.5	0.2
2011	1.6	1.4	0.2
2012	1.8	1.6	0.2
2013	1.7	1.4	0.3
2014	1.8	1.5	0.2

Figure 6C

Nonfatal occupational injury and illness incidence rates by case type, Wyoming, state and local government, 2003-2014  
[SOURCE : U.S. Bureau of Labor Statistics, U.S. Department of Labor, 2015]

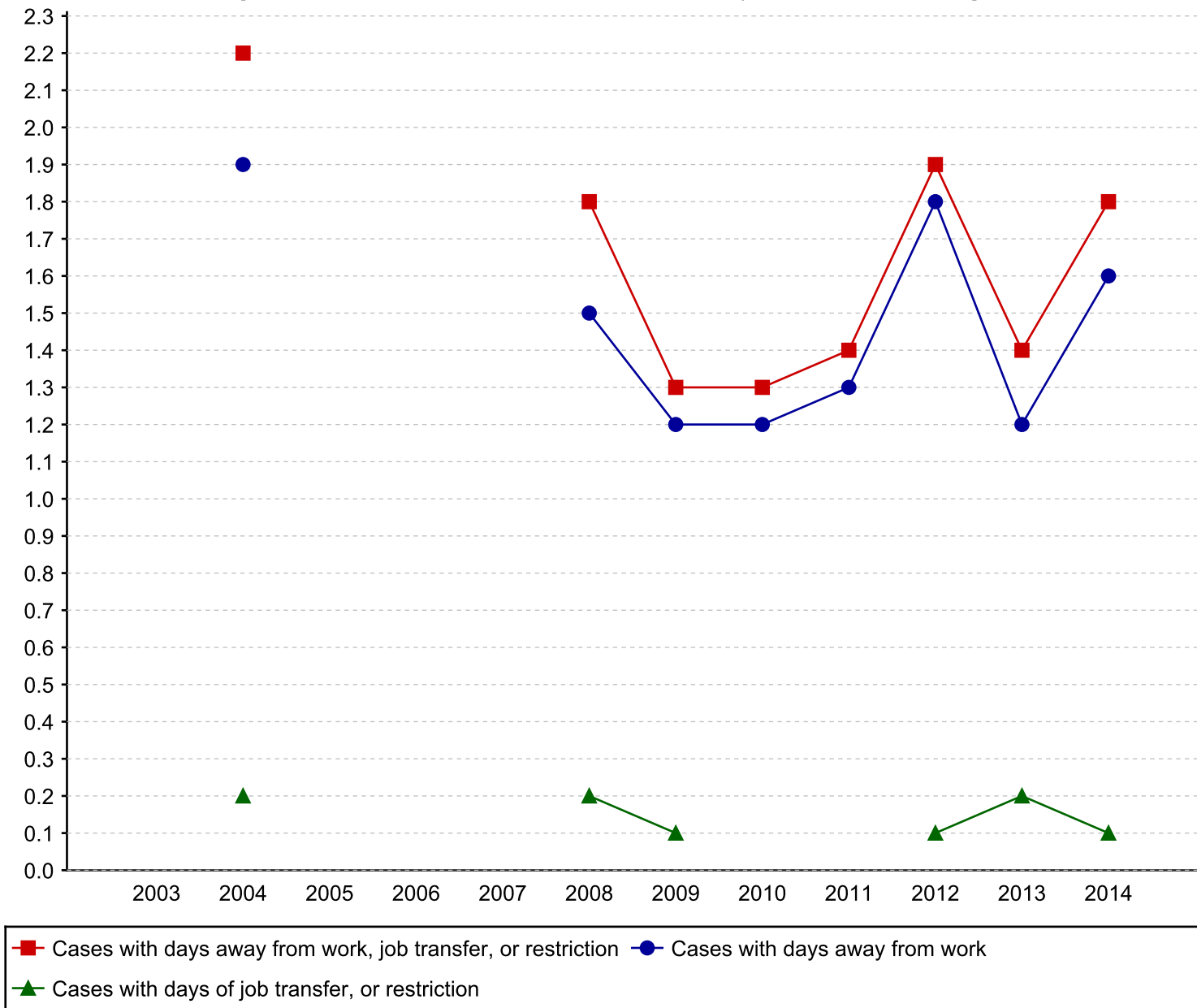


Nonfatal occupational injury and illness incidence rates by case type, Wyoming, state government, 2003-2014

Year	Cases with days away from work, job transfer, or restriction	Cases with days away from work	Cases with job transfer, or restriction
2003	-	-	-
2004	2.2	1.9	0.2
2005	-	-	-
2006	-	-	-
2007	-	-	-
2008	1.8	1.5	0.2
2009	1.3	1.2	0.1
2010	1.3	1.2	-
2011	1.4	1.3	-
2012	1.9	1.8	0.1
2013	1.4	1.2	0.2
2014	1.8	1.6	0.1

Figure 6D

Nonfatal occupational injury and illness incidence rates by case type, Wyoming, state government, 2003-2014  
[SOURCE : U.S. Bureau of Labor Statistics, U.S. Department of Labor, 2015]





Nonfatal occupational injury and illness incidence rates by case type, Wyoming, local government, 2003-2014

Year	Cases with days away from work, job transfer, or restriction	Cases with days away from work	Cases with job transfer, or restriction
2003	-	-	-
2004	2.2	2.0	0.2
2005	-	-	-
2006	-	-	-
2007	-	-	-
2008	2.2	1.9	0.2
2009	2.0	1.7	0.3
2010	1.8	1.5	0.3
2011	1.7	1.4	0.3
2012	1.8	1.6	0.2
2013	1.8	1.5	0.3
2014	1.8	1.5	0.3

Figure 6E

Nonfatal occupational injury and illness incidence rates by case type, Wyoming, local government, 2003-2014

[SOURCE : U.S. Bureau of Labor Statistics, U.S. Department of Labor, 2015]

